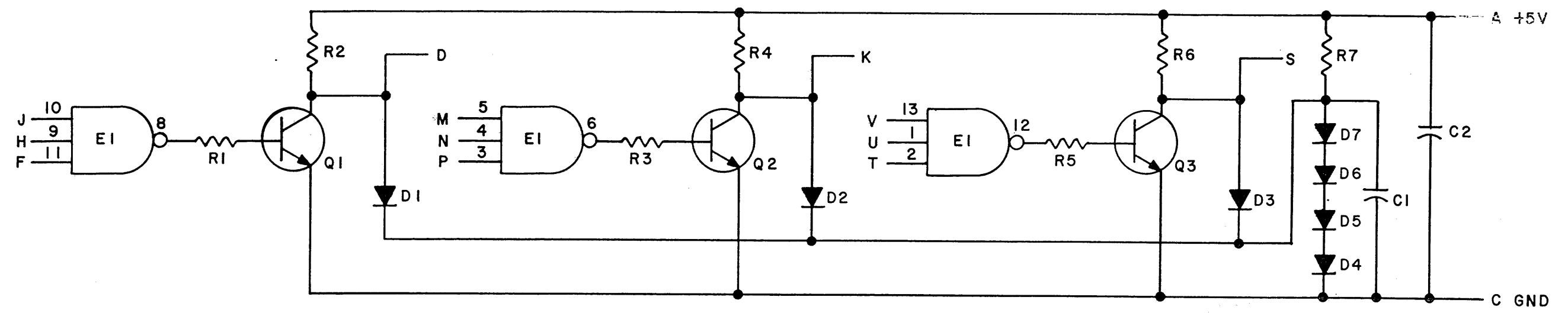
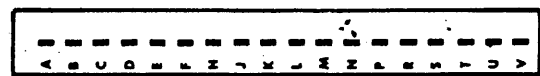


THIS SCHEMATIC IS FURNISHED ONLY FOR TEST AND MAINTENANCE PURPOSES. THE CIRCUITS ARE PROPRIETARY IN NATURE AND SHOULD BE TREATED ACCORDINGLY. COPYRIGHT 1968 BY DIGITAL EQUIPMENT CORPORATION



NOTES:  
PIN 7 ON IC = GND  
PIN 14 ON IC = +5V

E1	INTEGRATED CKT, DEC7410N	1905576
Q1, Q2, Q3	TRANSISTOR DEC3009B-S	1503100
R7	RES 330 1/4W 5% CC	1300295
R2, R4, R6	RES. 220 1/4W 5% CC	1300271
R1, R3, R5	RES. 680 1/4W 5% CC	1301424
D4-D7	DIODE D662	1100113
D1, D2, D3	DIODE D664	1100114
C1, C2	CAP. .01MFD 100V 20% DISC	1001610
	PARTS LIST	A-Pt-M661-0-0
REFERENCE DESIGNATION	DESCRIPTION	PART NO.



REVISIONS CHK CHG NO. REV.	DRN. <i>M. Hallen</i>	DATE 6-20-68	TRANSISTOR & DIODE CONVERSION CHART				 EQUIPMENT CORPORATION MAYNARD, MASSACHUSETTS	TITLE POSITIVE LEVEL DRIVER M661			
	CHK'D <i>M. Hallen</i>	DATE 6/28/68	DEC	EIA	DEC	EIA		SIZE B	CODE CS	NUMBER M661-0-1	REV.
	ENG. <i>[Signature]</i>	DATE 7/1/68	DEC3009B	2N3009							
	PROD.	DATE	D662	IN645							
			D664	IN3606							
PRINTED CIRCUIT REV. A							DIST. 324 434 420				