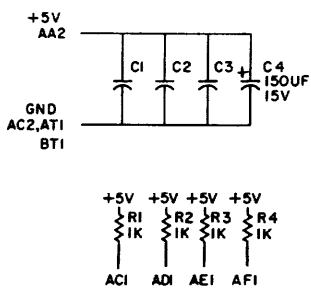
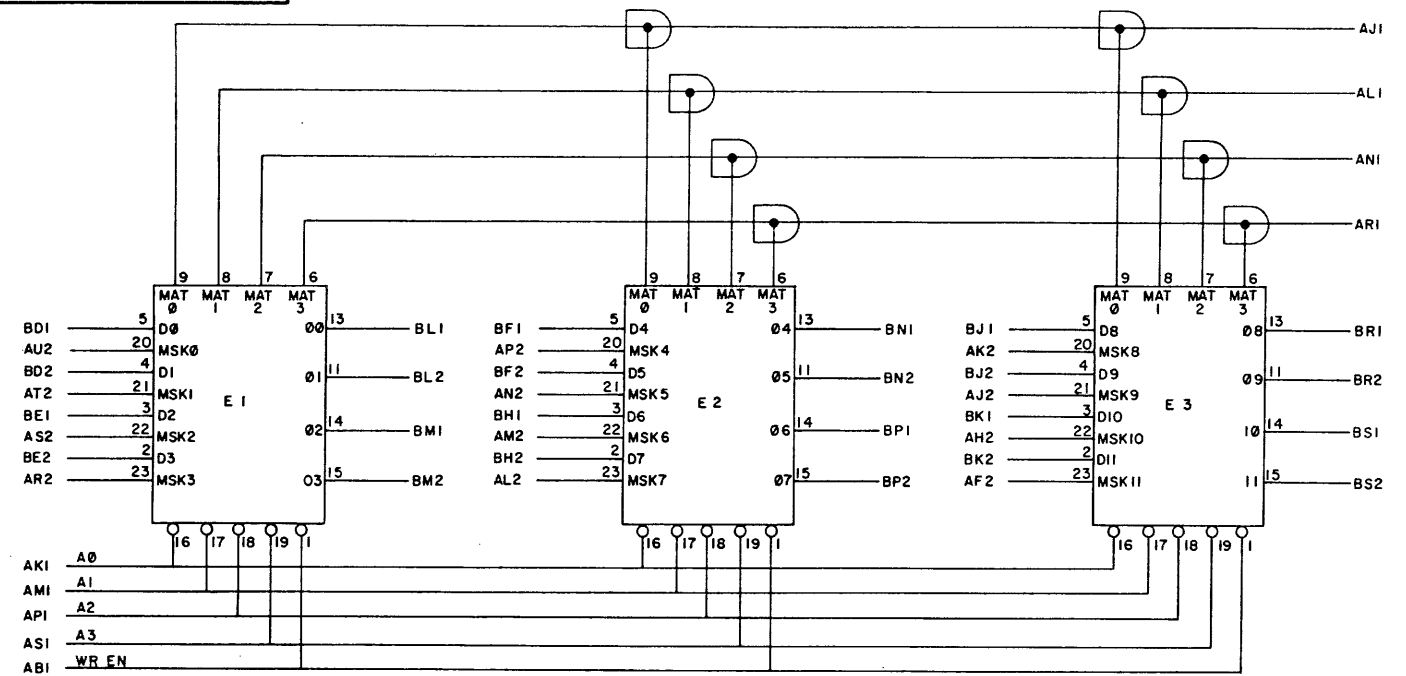
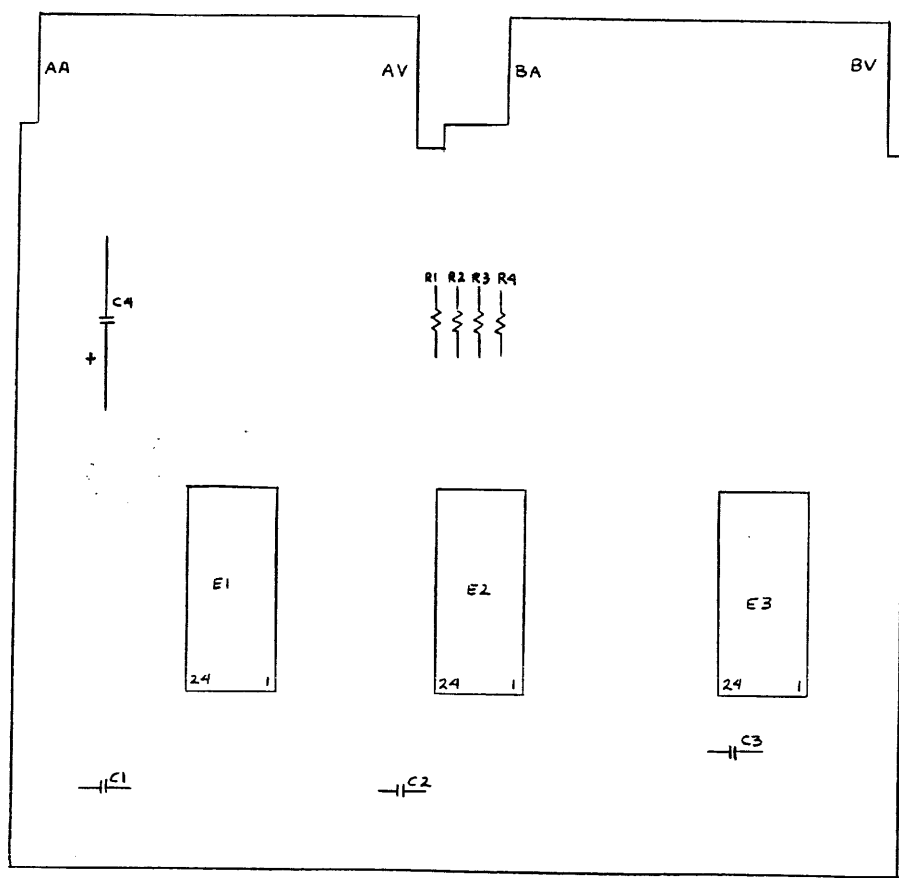


THIS SCHEMATIC IS FURNISHED ONLY FOR TEST AND MAINTENANCE PURPOSES. THE CIRCUITS ARE PROPRIETARY IN NATURE AND SHOULD BE TREATED ACCORDINGLY. COPYRIGHT 1971 BY DIGITAL EQUIPMENT CORPORATION



UNLESS OTHERWISE INDICATED:
 RESISTORS ARE 1/4W, 5%
 CAPACITORS ARE .01UF, 100V, 20%
 IC'S ARE DEC4102
 PIN 12 = GND
 PIN 24 = +5V ON EACH IC



10	9008337-06	HANDLE, FLIP CHIP - MAGENTA	2
9	9006732	EYELET #GS 4-7	4
8	1909721	I.C. DEC 4102	3
7	1300365	RES. 1K, 1/4W, 5%	12
6	1001610	CAP. .01UF, 100V, 20% DISC	3
5	1000084	CAP. 150UF, 15V, 20%	1
4	5009394	ETCHED CIRCUIT BOARD	1
3	B-MH-M260-0-6	MODULE ECO HISTORY	
2	D-AH-M260-0-5	ASSY/DRILLING HOLE LAYOUT	
1	R-CO-M260-0-4	X-Y COORDINATE HOLE LOCATION	
ITEM NO.	PART NO.	DESCRIPTION	QTY.
PARTS LIST			

REVISIONS CHG NO. REV	DATE	BY	DATE	BY																
	12/11	S. Cooper	12/11																	
TRANSISTOR & DIODE CONVERSION CHART																				
DEC	EIA	DEC	EIA																	
<table border="1"> <tr> <td colspan="2">digital</td> <td colspan="2">TITLE 16 WORD X 12 BIT</td> </tr> <tr> <td colspan="2">EQUIPMENT CORPORATION</td> <td colspan="2">ASS. MEM. CELL M260</td> </tr> <tr> <td>SIZE</td> <td>CODE</td> <td>NUMBER</td> <td>REV.</td> </tr> <tr> <td>D</td> <td>CS</td> <td>M260-0-1</td> <td>A</td> </tr> </table>					digital		TITLE 16 WORD X 12 BIT		EQUIPMENT CORPORATION		ASS. MEM. CELL M260		SIZE	CODE	NUMBER	REV.	D	CS	M260-0-1	A
digital		TITLE 16 WORD X 12 BIT																		
EQUIPMENT CORPORATION		ASS. MEM. CELL M260																		
SIZE	CODE	NUMBER	REV.																	
D	CS	M260-0-1	A																	

M260-0-1
 D CS M260-0-1
 NUMBER
 M260