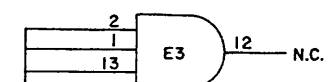
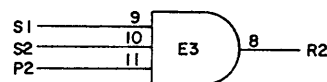
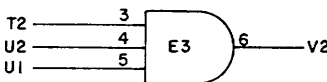
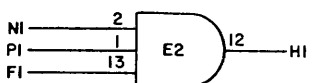
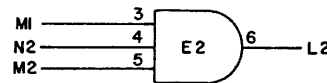
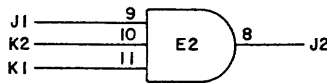
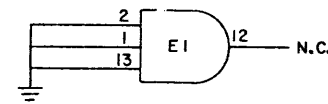
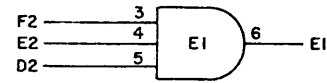
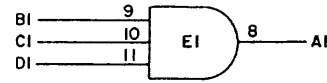
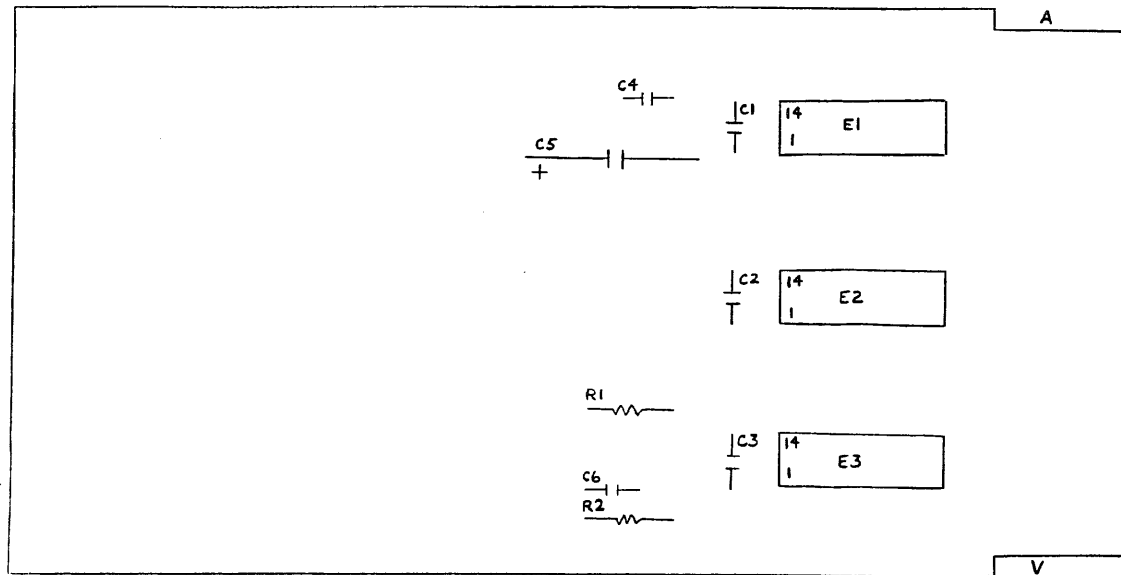
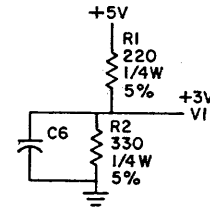
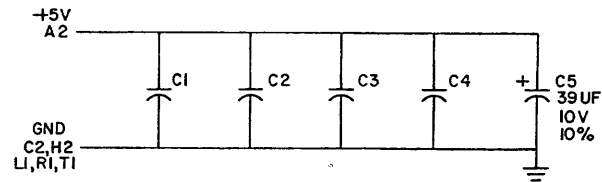


THIS SCHEMATIC IS FURNISHED ONLY FOR TEST AND MAINTENANCE PURPOSES. THE CIRCUITS ARE PROPRIETARY IN NATURE AND SHOULD BE TREATED ACCORDINGLY. COPYRIGHT 1970 BY DIGITAL EQUIPMENT CORPORATION



UNLESS OTHERWISE INDICATED:
CAPACITORS ARE .01UF, 100V, 20%
IC'S ARE 1074H11
PIN 7 = GND ON ALL IC'S
PIN 14 = +5V



ITEM NO.	D&C PART NO.	DESCRIPTION	QTY.
11.	9008337-06	HANDLE, FLIP CHIP - MAGENTA	1
10	9006732	EYELET #GS 4-7	2
9	1910465	I.C. DEC1074H11	3
8	1300295	RES. 330, 1/4W, 5%	1
7	1300271	RES. 220, 1/4W, 5%	1
6	1001610	CAP. .01UF, 100V, 20% DISC	5
5	1000076	CAP. 39UF, 10V, 10% S. TANT	1
4	5009290	ETCHED CIRCUIT BOARD	1
3	E-PH-M175-0-6	MODULE ECO HISTORY	
2	C-AH-M175-0-5	ASSY/DRILLING HOLE LAYOUT	
1	K-CQ-M175-0-4	X-Y COORDINATE HOLE LOCATION	

REVISIONS	CHK'D	DATE
1	J. Cooper	12/17/70

DEC FORM NO. DRC 102

DRN	DATE
J. Cooper	12/17/70

TRANSISTOR & DIODE CONVERSION CHART			
DEC	EIA	DEC	EIA

digital
EQUIPMENT CORPORATION
MAYNARD, MASSACHUSETTS

TITLE			
SEVEN			
3 INPUT AND GATES M175			
SIZE	CODE	NUMBER	REV
C	CS	M175-0-1	A
PRINTED CIRCUIT REV			A

REV A
NUMBER M175-0-1
SIZE C CS