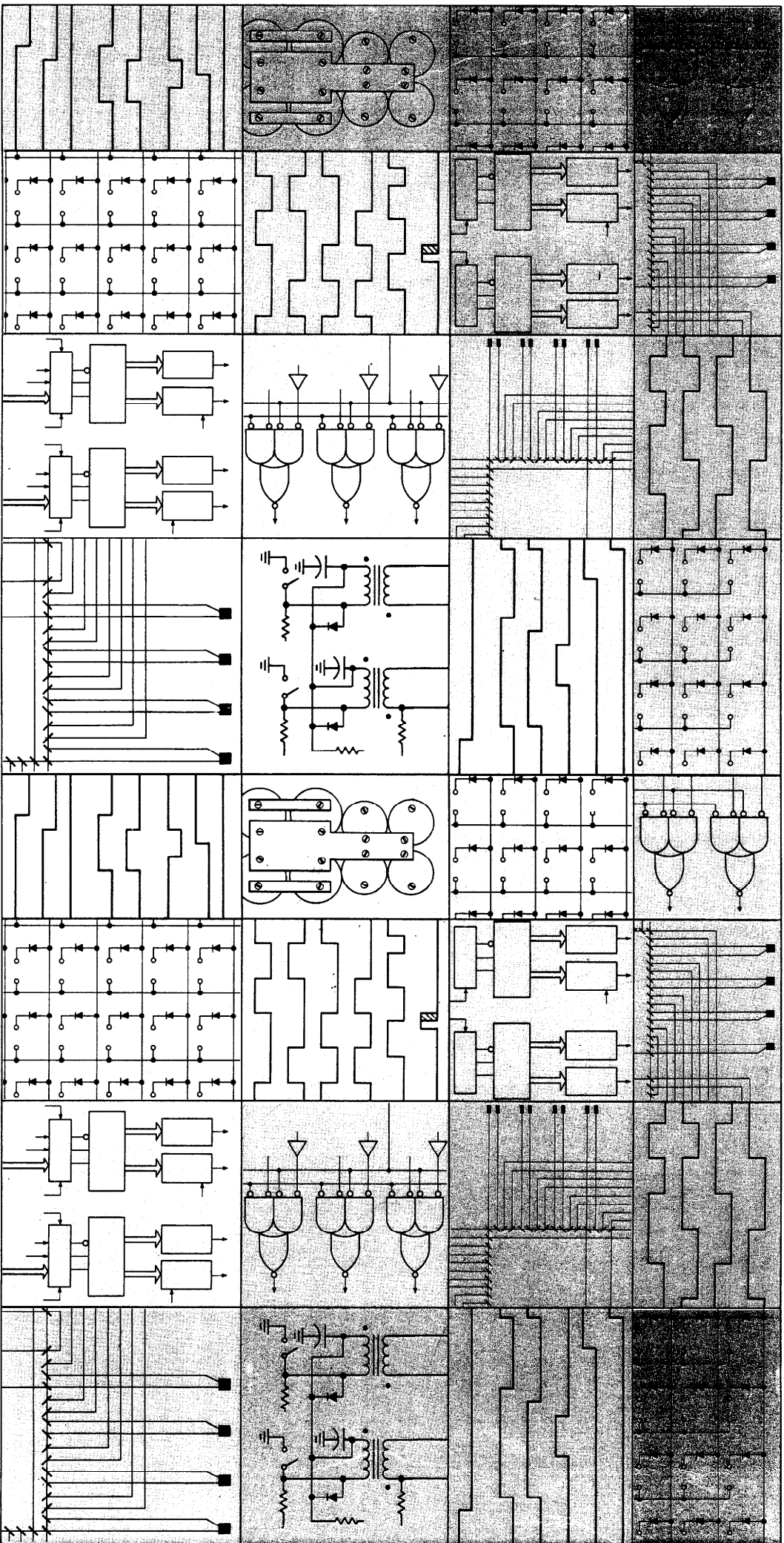


pdp8/e
pdp8/f & pdp8/m



digital

**TD8-E
DECtape control
engineering drawings**

digital equipment corporation · maynard, massachusetts

Copyright © 1971 by Digital Equipment Corporation

The material in this manual is for informational purposes and is subject to change without notice.

The following are trademarks of Digital Equipment Corporation, Maynard, Massachusetts:

DEC	PDP
FLIP CHIP	FOCAL
DIGITAL	COMPUTER LAB

MASTER DRAWING LIST

MAINTENANCE MANUALS		UNIT VARIATIONS																		
		TDS-E	TDS-EH	TDS-EJ	TDS-EM	TDS-ER														
NO.	TITLE																			
	TDS-E DECTAPE CONTROL	X	X	X	X	X														

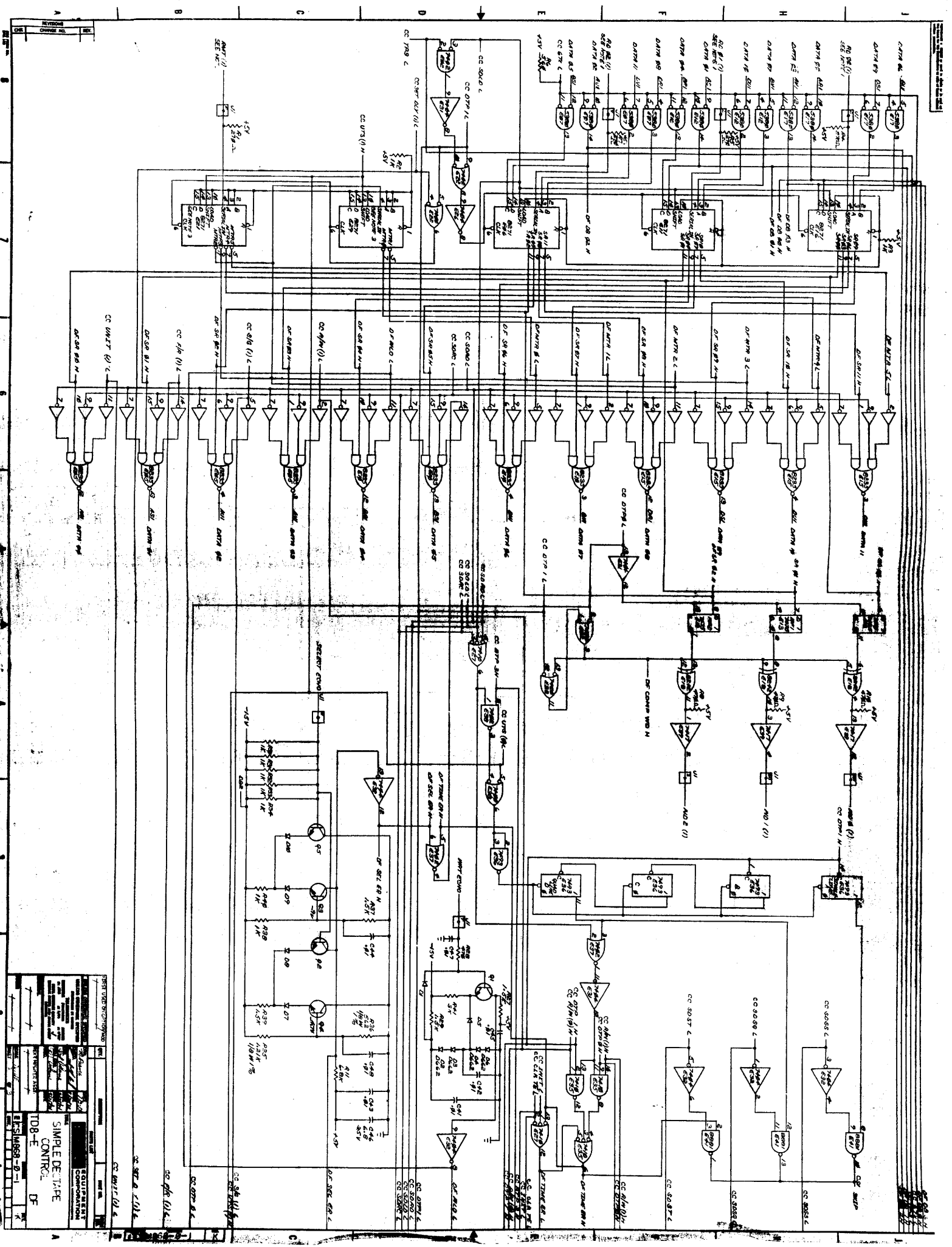
USED ON OPTIONS									
PDP8/E									

REVISIONS	APP'D.	DRN.		DATE	<div style="font-weight: bold; font-size: 1.2em;">digital</div> EQUIPMENT CORPORATION <small>MAYNARD, MASSACHUSETTS</small>				
	CHG. NO.	K. RUSS	81871	TITLE					
						DECTAPE CONTROL			

DRA 131
Dec 16-(325)-1048-N471

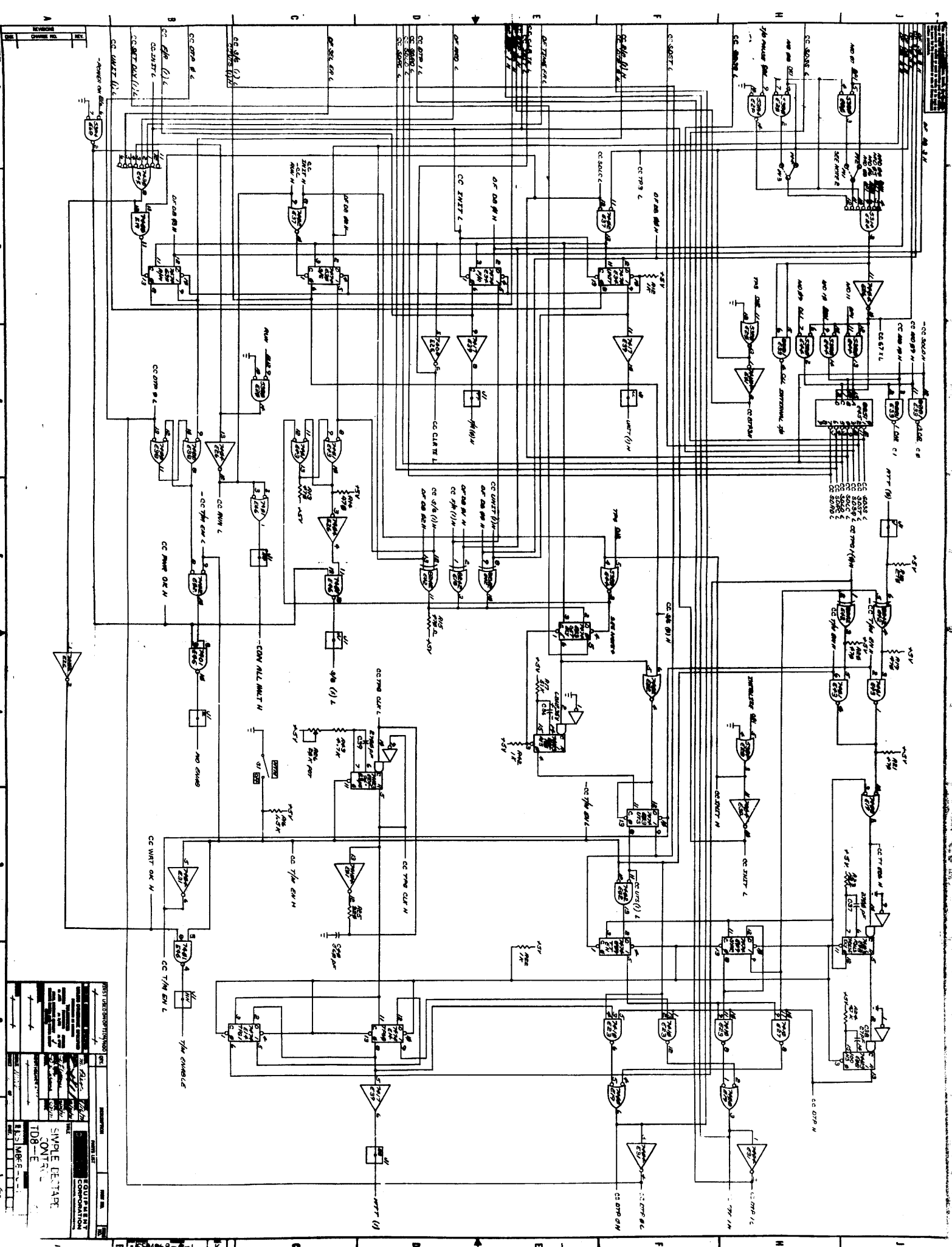
PRINT SET					DWG. NO.	REV. LET.	NO. OF SHEETS	TITLE	OPTION NO.	
TDS-E										
X					E-CS-M868-0-1	REF	3	SIMPLE DECTAPE CONTROL		
X					D-TD-TDS-E-4		4	TDS-E TIMING DIAGRAM		
X					D-IA-7008447-0-0	A	2	TDS-E CONTROL CABLE		
X					A-PL-TDS-E-0	A	1	TDS-E PARTS LIST		
X					D-AR-TDS-E-2	A	1	TDS-E CONFIGURATION		
X					D-IC-TDS-E-3	B	2	POWER WIRING		
C					A-ML-TU56-0		2	DECTAPE TU56		
C					A-ML-H716-0		2	H716 POWER SUPPLY		
-					A-SP-TDS-E-5		9	ENGINEERING SPECIFICATION		
-					A-SP-TDS-E-6	B	3	TDS-E ACCEPTANCE PROCEDURE		
-					A-SP-TDS-E-7		7	CHECKOUT PROCEDURE		
X					D-CS-M960-0-1	REF	1	COMMAND CABLE CONN		
X					D-CS-M961-0-1	REF	1	DATA CABLE CONN		
X					A-AL-TDS-E-8		1	ACCESSORY LIST		
TITLE					DECTAPE CONTROL	SHEET 2 OF 2		SIZE CODE A ML	NUMBER TDS-E	REV. B

DRA 132
DEC 16 (325) 1048 1 N471



REF	DESCRIPTION	QTY	REMARKS
1	74100	1	SR LATCH
2	74101	1	SR LATCH
3	74102	1	SR LATCH
4	74103	1	SR LATCH
5	74104	1	SR LATCH
6	74105	1	SR LATCH
7	74106	1	SR LATCH
8	74107	1	SR LATCH
9	74108	1	SR LATCH
10	74109	1	SR LATCH
11	74110	1	SR LATCH
12	74111	1	SR LATCH
13	74112	1	SR LATCH
14	74113	1	SR LATCH
15	74114	1	SR LATCH
16	74115	1	SR LATCH
17	74116	1	SR LATCH
18	74117	1	SR LATCH
19	74118	1	SR LATCH
20	74119	1	SR LATCH
21	74120	1	SR LATCH
22	74121	1	SR LATCH
23	74122	1	SR LATCH
24	74123	1	SR LATCH
25	74124	1	SR LATCH
26	74125	1	SR LATCH
27	74126	1	SR LATCH
28	74127	1	SR LATCH
29	74128	1	SR LATCH
30	74129	1	SR LATCH
31	74130	1	SR LATCH
32	74131	1	SR LATCH
33	74132	1	SR LATCH
34	74133	1	SR LATCH
35	74134	1	SR LATCH
36	74135	1	SR LATCH
37	74136	1	SR LATCH
38	74137	1	SR LATCH
39	74138	1	SR LATCH
40	74139	1	SR LATCH
41	74140	1	SR LATCH
42	74141	1	SR LATCH
43	74142	1	SR LATCH
44	74143	1	SR LATCH
45	74144	1	SR LATCH
46	74145	1	SR LATCH
47	74146	1	SR LATCH
48	74147	1	SR LATCH
49	74148	1	SR LATCH
50	74149	1	SR LATCH
51	74150	1	SR LATCH
52	74151	1	SR LATCH
53	74152	1	SR LATCH
54	74153	1	SR LATCH
55	74154	1	SR LATCH
56	74155	1	SR LATCH
57	74156	1	SR LATCH
58	74157	1	SR LATCH
59	74158	1	SR LATCH
60	74159	1	SR LATCH
61	74160	1	SR LATCH
62	74161	1	SR LATCH
63	74162	1	SR LATCH
64	74163	1	SR LATCH
65	74164	1	SR LATCH
66	74165	1	SR LATCH
67	74166	1	SR LATCH
68	74167	1	SR LATCH
69	74168	1	SR LATCH
70	74169	1	SR LATCH
71	74170	1	SR LATCH
72	74171	1	SR LATCH
73	74172	1	SR LATCH
74	74173	1	SR LATCH
75	74174	1	SR LATCH
76	74175	1	SR LATCH
77	74176	1	SR LATCH
78	74177	1	SR LATCH
79	74178	1	SR LATCH
80	74179	1	SR LATCH
81	74180	1	SR LATCH
82	74181	1	SR LATCH
83	74182	1	SR LATCH
84	74183	1	SR LATCH
85	74184	1	SR LATCH
86	74185	1	SR LATCH
87	74186	1	SR LATCH
88	74187	1	SR LATCH
89	74188	1	SR LATCH
90	74189	1	SR LATCH
91	74190	1	SR LATCH
92	74191	1	SR LATCH
93	74192	1	SR LATCH
94	74193	1	SR LATCH
95	74194	1	SR LATCH
96	74195	1	SR LATCH
97	74196	1	SR LATCH
98	74197	1	SR LATCH
99	74198	1	SR LATCH
100	74199	1	SR LATCH

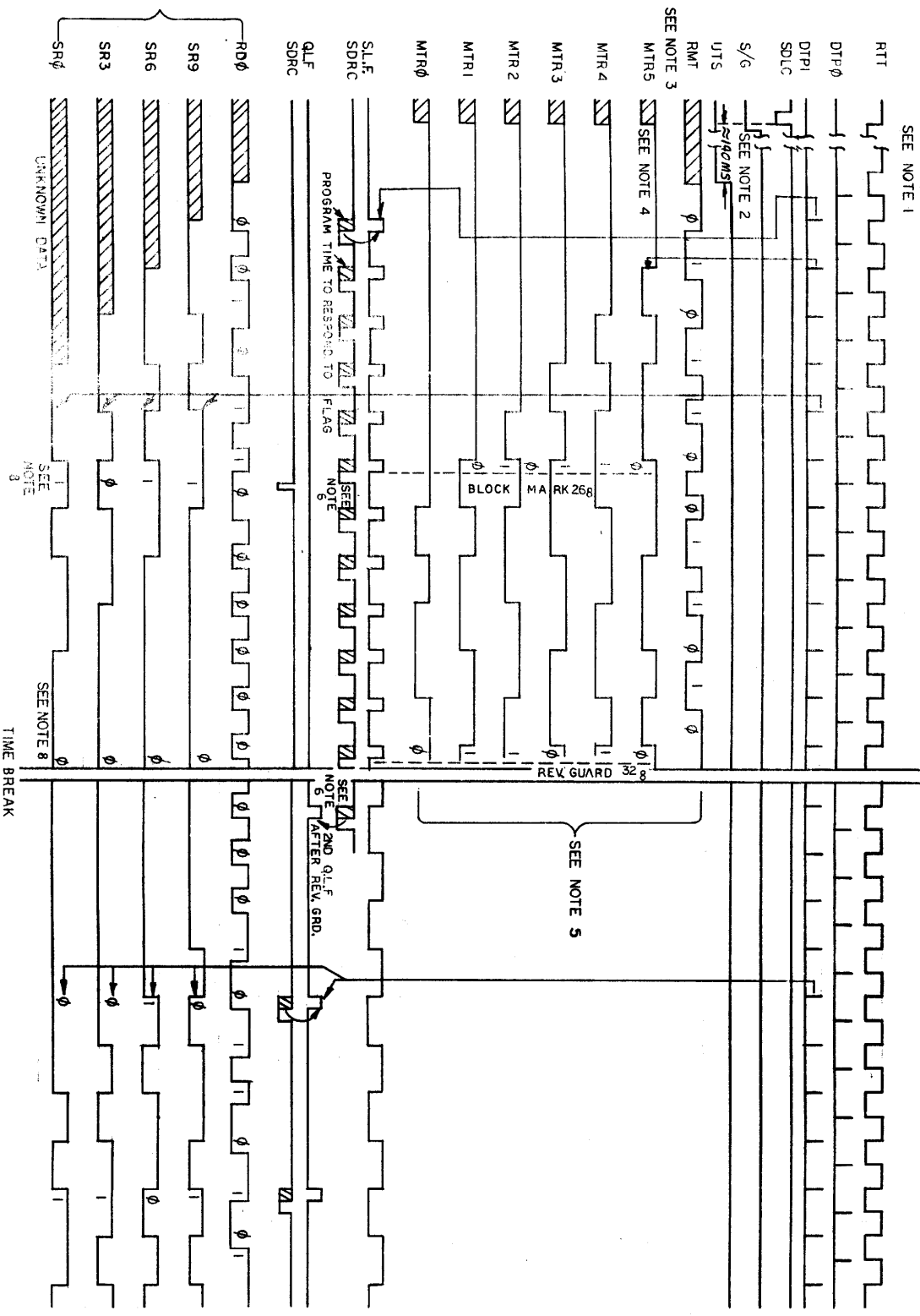
EQUIPMENT
 CONTROL
 TDB-E
 DF



<p> REVISIONS 1. ORIGINAL DESIGN 2. REVISED DESIGN 3. REVISED DESIGN 4. REVISED DESIGN 5. REVISED DESIGN 6. REVISED DESIGN 7. REVISED DESIGN 8. REVISED DESIGN 9. REVISED DESIGN 10. REVISED DESIGN 11. REVISED DESIGN 12. REVISED DESIGN 13. REVISED DESIGN 14. REVISED DESIGN 15. REVISED DESIGN 16. REVISED DESIGN 17. REVISED DESIGN 18. REVISED DESIGN 19. REVISED DESIGN 20. REVISED DESIGN 21. REVISED DESIGN 22. REVISED DESIGN 23. REVISED DESIGN 24. REVISED DESIGN 25. REVISED DESIGN 26. REVISED DESIGN 27. REVISED DESIGN 28. REVISED DESIGN 29. REVISED DESIGN 30. REVISED DESIGN 31. REVISED DESIGN 32. REVISED DESIGN 33. REVISED DESIGN 34. REVISED DESIGN 35. REVISED DESIGN 36. REVISED DESIGN 37. REVISED DESIGN 38. REVISED DESIGN 39. REVISED DESIGN 40. REVISED DESIGN 41. REVISED DESIGN 42. REVISED DESIGN 43. REVISED DESIGN 44. REVISED DESIGN 45. REVISED DESIGN 46. REVISED DESIGN 47. REVISED DESIGN 48. REVISED DESIGN 49. REVISED DESIGN 50. REVISED DESIGN 51. REVISED DESIGN 52. REVISED DESIGN 53. REVISED DESIGN 54. REVISED DESIGN 55. REVISED DESIGN 56. REVISED DESIGN 57. REVISED DESIGN 58. REVISED DESIGN 59. REVISED DESIGN 60. REVISED DESIGN 61. REVISED DESIGN 62. REVISED DESIGN 63. REVISED DESIGN 64. REVISED DESIGN 65. REVISED DESIGN 66. REVISED DESIGN 67. REVISED DESIGN 68. REVISED DESIGN 69. REVISED DESIGN 70. REVISED DESIGN 71. REVISED DESIGN 72. REVISED DESIGN 73. REVISED DESIGN 74. REVISED DESIGN 75. REVISED DESIGN 76. REVISED DESIGN 77. REVISED DESIGN 78. REVISED DESIGN 79. REVISED DESIGN 80. REVISED DESIGN 81. REVISED DESIGN 82. REVISED DESIGN 83. REVISED DESIGN 84. REVISED DESIGN 85. REVISED DESIGN 86. REVISED DESIGN 87. REVISED DESIGN 88. REVISED DESIGN 89. REVISED DESIGN 90. REVISED DESIGN 91. REVISED DESIGN 92. REVISED DESIGN 93. REVISED DESIGN 94. REVISED DESIGN 95. REVISED DESIGN 96. REVISED DESIGN 97. REVISED DESIGN 98. REVISED DESIGN 99. REVISED DESIGN 100. REVISED DESIGN </p>	<p> DESIGNER [Signature] </p>	<p> CHECKED BY [Signature] </p>	<p> DATE [Date] </p>
--	---	---	--

PROJECT SIMPLE DELTAP CONF
CONF ID8-E
NO. 108-E

THIS DRAWING IS THE PROPERTY OF THE GENERAL ELECTRIC COMPANY. IT IS TO BE KEPT IN CONFIDENCE AND IS NOT TO BE REPRODUCED OR TRANSMITTED IN ANY FORM OR BY ANY MEANS, ELECTRONIC OR MECHANICAL, INCLUDING PHOTOCOPYING, RECORDING, OR BY ANY INFORMATION STORAGE AND RETRIEVAL SYSTEM, WITHOUT THE WRITTEN PERMISSION OF THE GENERAL ELECTRIC COMPANY.



NO READ MARK TRACK AND DATA

TIME BREAK

T = RC

REV	CHANGE NO.	REVISIONS
51		2035
408		51180.00
306		180
396.8		153
		235
		70
		102
		10

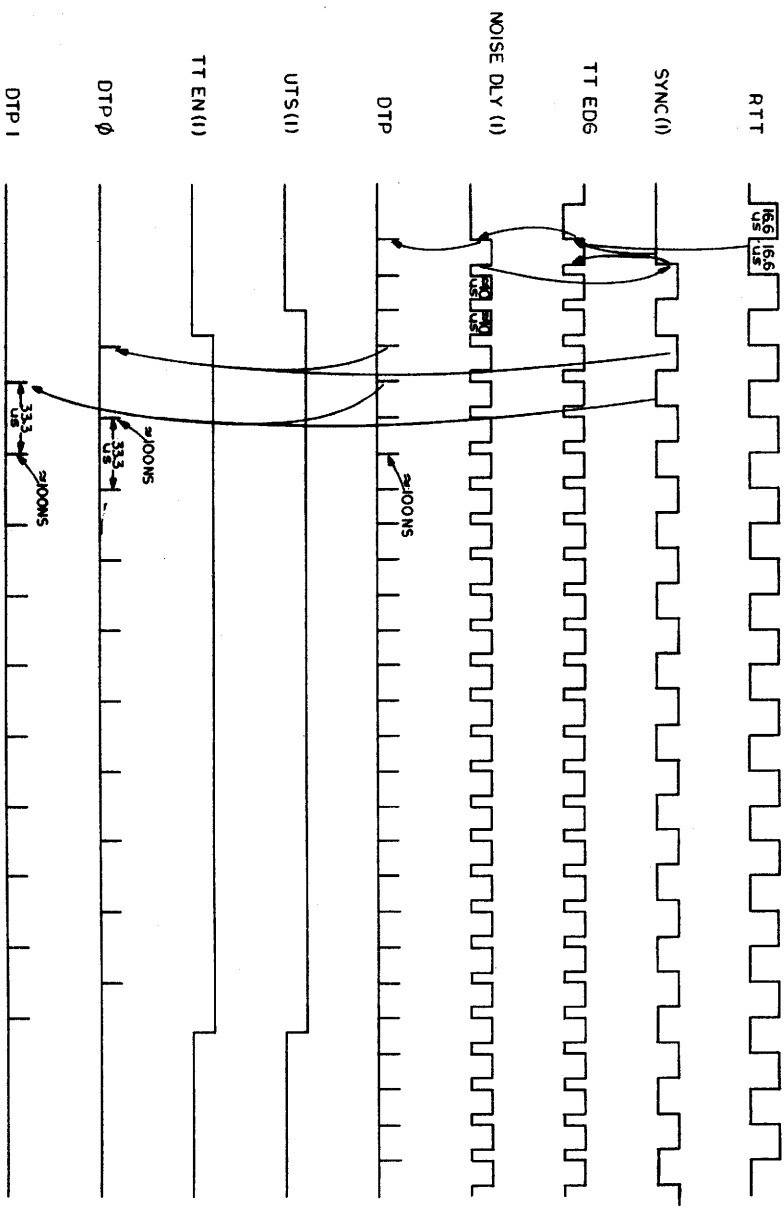
10-6
10-3
51

NOTES:

- 1 THIS TIMING DIAGRAM DOES NOT INDICATE THE ONLY OR CORRECT WAY TO PROGRAM THE TDS-E FOR READ OPERATIONS. ITS PRIMARY FUNCTION IS TO SHOW WHAT HAPPENS IN THE LOGIC BETWEEN VARIOUS PROGRAMMED INSTRUCTIONS.
- 2 THE GO SIGNAL IS SWITCH ON BY THE COMPUTER TPA, TO ALLOW SETTLING OF THE UNIT SELECT LINES. THE UNIT DIRECTION AND READ COMMANDS ARE SET BY THIS SDLC.
- 3 THE INPUTS TO AND OUTPUTS FROM THE MARK TRACK REG. ARE REDEFINIED. 1 IS A LOW LEVEL 4 ANY TIME THE UTS DELAY IS STARTED, THE MTR IS SET TO RL Ø'S (HIGH OUTPUT)
- 5 ONCE THE CORRECT BLOCK AND ITS BEN GUARD CODES HAVE BEEN FOUND, THE SINGLE LINE FLGAS ARE INVADED. THE MARK IS NOT LOOKED AT AGAIN UNTIL ANOTHER SEARCH IS STARTED.
- 6 AT THIS POINT THE COMPLETE MARK TRACK CODE IS IN THE RL. IF IT IS A BLOCK MARK THEN A SDEL IS ISSUED TO REFD. THE BLOCK NUMBER SO THE PROGRAM CAN TEST TO SEE IF ITS THE ONE WANTED.
- 7 THE OTHER TWO PARALLEL READ LINES WERE IDENTICALLY TO RD Ø, SEP. Ø, 3, Ø. THE FIRST TWO BITS BEING UNDER THE BLOCK MARK ARE LOST AS THE BLOCK NO. IS ONLY UNDER THE FIRST FOUR BITS OF THE BLOCK MARK. THE BEN GUARD MARKS (Ø) DATA (IN THE FWD DIRECTION).

FIRST USED OPTION MODEL		QTY	DESCRIPTION	PART NO.	ITEM NO.
TD8-E					
UNLESS OTHERWISE SPECIFIED DIMENSIONS IN INCHES					
TOLERANCES		ANGLES			
DECIMALS		30° 30'			
FRACTIONS		X.XX = .005			
X.X = .02		X.XX = .005			
X.XX = .01		X.XX = .005			
REMOVE RINGS AND BREAK SHAFT					
COMMON SURFACE QUALITY					
MATERIAL					
NEXT HIGHER ASSY					
FINISH		A-ML-TD8-E			
SCALE		1/4"			
SHEET		OF 4			
PARTS LIST		TITLE			
TD8-E		TIMING DIAGRAM			
DRAWN		DATE			
CHECKED		DATE			
APPROVED		DATE			
DESIGNED		DATE			
EQUIPMENT CORPORATION		EQUIPMENT CORPORATION			
SCALE		NUMBER			
D/TD		TD8-E-4			
REV.					

This drawing and specifications, herein, are the property of the United States Government and are loaned to you for your information only. They are not to be distributed outside of your organization.



GENERATING TIME PULSES FROM RTT

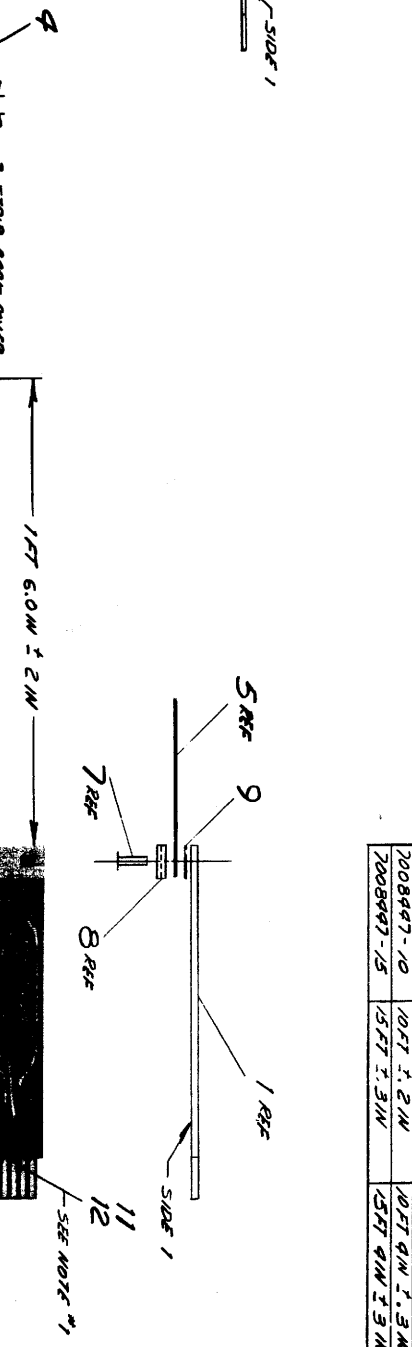
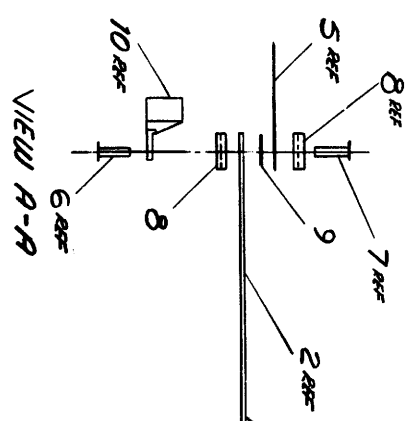
REVISIONS	
CHK	REV

FIRST USED ON: TD8-E		PART NO.:	
LIMITS OTHERWISE SPECIFIED		DESCRIPTION:	
TOLERANCES UNLESS OTHERWISE SPECIFIED		DATE: 1/18/57	
DECIMALS ANGLES		DRAWN BY: [Signature]	
.XX - .XX 1/2° - 1°		CHECKED BY: [Signature]	
REMOVE BURRS AND BREAK SHARP EDGES		DATE: 1/18/57	
COMMENCE SURFACE QUALITY		MATERIAL: A-MIL-TD8-E	
ANTENNAL		SCALE: NONE	
NEXT HIGHER ASBY:		SHEET: 4 OF 4	
TITLE: TD8-E TIMING DIAGRAM		EQUIPMENT CORPORATION	
PARTS LIST		DRAWN BY: [Signature]	
DATE: 1/18/57		CHECKED BY: [Signature]	
DATE: 1/18/57		DATE: 1/18/57	
DATE: 1/18/57		DATE: 1/18/57	
DATE: 1/18/57		DATE: 1/18/57	
DATE: 1/18/57		DATE: 1/18/57	

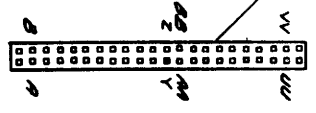
This drawing and specifications herein, for the purpose of Digital Equipment Corporation and shall not be used for any other purpose without the express written permission of the manufacturer or sale of items without written permission.

NUMBER	VARIATION	DIM "X"	DIM "Y" APPROX
2008447-10	10 FT 1" 2 IN	10 FT 1" 2 IN	10 FT 1" 2 IN
2008447-15	15 FT 7 3/4 IN	15 FT 7 3/4 IN	15 FT 7 3/4 IN

NOTES:
 1. DIMENSIONS SHOW ARE FOR UNITS B AND I (TDS-F DEVICE CODE 67X) FOR OTHER UNIT SELECTION AND TDS-F DEVICE CODES CHANGE DIMENSIONS AS FOLLOWS:
 DEVICE CODE SR DIMENSIONS
 677 X B # 1
 676 X C # 3
 625 X 4 # 5
 674 X 6 # 7
 2. TAPE BOTH CHASIS (ITEM #5) TOGETHER APPROXIMATELY EVERY 8 INCHES, USING BRACK RECEIVING TAPE (ITEM #13).



VIEW B-B
 SCALE - NONE



REVISIONS		
CHK	CHANGE NO.	REV.
	TC8E-50201	A
ADAMS		
11/13/72		

FIRST USED ON OPTION/MODEL		PARTS LIST	
QTY.	DESCRIPTION	PART NO.	ITEM NO.
1	CABLE ASSEMBLY	7008447-0	1
1	CHASIS	7008447-1	2
1	CHASIS	7008447-2	3
1	CHASIS	7008447-3	4
1	CHASIS	7008447-4	5
1	CHASIS	7008447-5	6
1	CHASIS	7008447-6	7
1	CHASIS	7008447-7	8
1	CHASIS	7008447-8	9
1	CHASIS	7008447-9	10
1	CHASIS	7008447-10	11
1	CHASIS	7008447-11	12
1	CHASIS	7008447-12	13

UNLESS OTHERWISE SPECIFIED		DIMENSIONS IN INCHES	
DECIMALS	TOLERANCES	ANGLES	FINISH
XXX.XXX	± 0.005	± 0.5°	SEE PARTS LIST
XXX.XX	± 0.01	± 1.0°	
XXX.X	± 0.02	± 1.5°	
XXX	± 0.05	± 2.0°	
XX	± 0.1	± 3.0°	
X	± 0.2	± 4.0°	
	± 0.5	± 5.0°	

REV.	NUMBER	SIZE/CODE	SCALE	SHEET	OF	TOTAL SHEETS
A	0	DIA	1/1	1	2	2

REV A
 NUMBER 7008447-0-0
 SIZE/CODE DIA

This drawing and specifications, however, are the property of the manufacturer and shall not be reproduced or copied in whole or in part, or by any means, without the prior written consent of the manufacturer.

NOTES
 1 H722 IS USED IN 230V AC SYSTEM TO PRODUCE 115V FOR CABINET.

BLANK LOGO 7407936-9	LOGO 7407936-6
TU56M	H950-Q PANEL COVER 10.5"
TU56M	TU56M
TU56M	H950-Q PANEL COVER 10.5"
H950-Q PANEL COVER 10.5"	PDP9E (TD8-E's)
H950-Q PANEL COVER 10.5"	H950-Q PANEL COVER 10.5"
H950-Q PANEL COVER 10.5"	H950-Q PANEL COVER 10.5"

FAN H952-C
2 PER CAB

CABINET H960-B

AC CHANNEL 854(B) POWER CONTROL H716B(D) POWER SUPPLY H716B(D)	AC CHANNEL 854(B) POWER CONTROL H716B(D) POWER SUPPLY H716B(D) POWER SUPPLY H716B(D)
---	---

END PANEL
H952-A

SEE NOTE 1

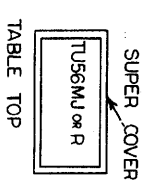
LOGO 7407936-6	TU56M
TU56M	H950-Q PANEL COVER 10.5"
TU56M	PDP9E (TD8-E)
H950-Q PANEL COVER 10.5"	H950-Q PANEL COVER 10.5"
H950-Q PANEL COVER 10.5"	H950-Q PANEL COVER 10.5"

REAR VIEW

REAR DOOR R.H.
H950-C

SEE NOTE 1

AC CHANNEL 854(B) POWER CONTROL H716B(D) POWER SUPPLY H716B(D)	H722 TRANSFORMER
---	---------------------



FRONT VIEW
WITH 1 OR 2 TU56'S

REAR VIEW

REAR DOOR L.H.
H950-B

REAR DOOR R.H.
H950-C

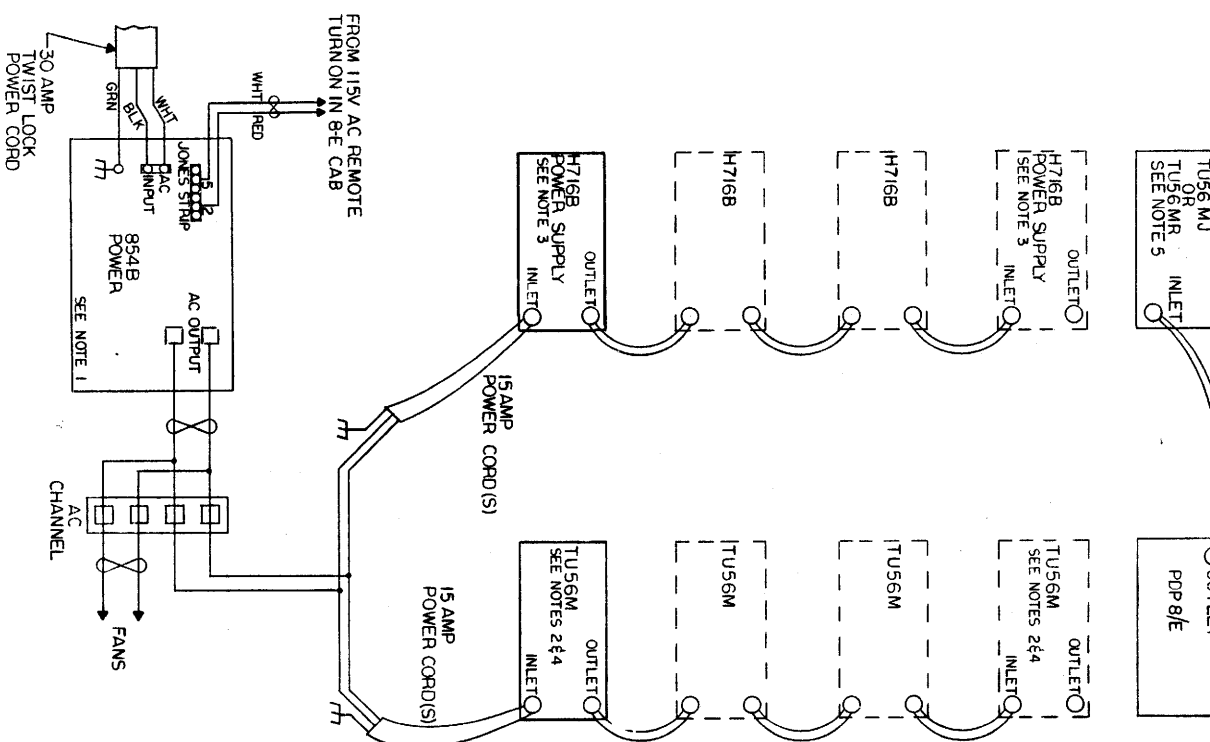
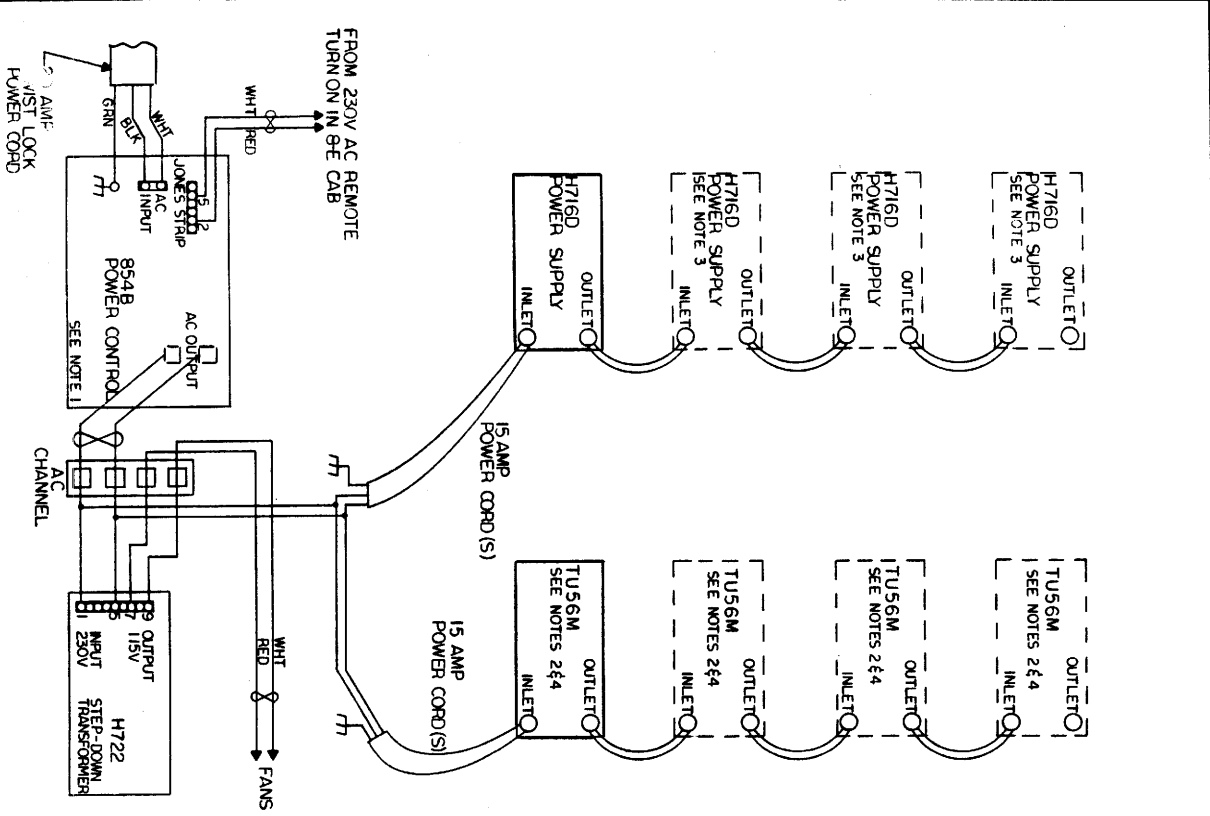
FRONT VIEW
WITH 4 TU56'S

FRONT VIEW
WITH 4 TU56'S

REVISIONS		
CHK	CHANGE NO.	REV.
HDBE - 00001		A
M. Quinn 1-6-72		
D. ADAMS		
P. Adams 1/13/72		

FIRST USED ON OPTION/MODEL		QTY.	DESCRIPTION	PART NO.	ITEM NO.
TD8-E					
UNLESS OTHERWISE SPECIFIED					
DIMENSION IN INCHES					
TOLERANCES					
DECIMALS	ANGLES				
.XX" - .99"	± .005"				
1" - 1.99"	± .005"				
REMOVE BURRS AND BREAK SHARP EDGES TO PRODUCE FINISH QUALITY					
MATERIAL	FINISH	DATE	DATE	DATE	DATE
NEXT HIGHER ASST.		TITLE			
A-1-M, TD8-E		TD8-E			
SCALE NONE		CONFIGURATION			
SHEET 1 OF 1		DRAWN		REV.	
DAR		DAR		A	

The drawing and specifications herein are the property of Digital Equipment Corporation and are not to be reproduced, stored in a retrieval system, or transmitted in any form or by any means, electronic, mechanical, photocopying, recording, or by any information storage and retrieval system, without the prior written permission of Digital Equipment Corporation.



- NOTES:
1. IF THE H716 AND TUS6 ARE MOUNTED IN THE 8-E CAB, THEN USE THE EXISTING 854 POWER CONTROL, 2. UP TO 4 TD8 E'S AND TUS6M'S CAN BE CONNECTED TO ONE 8-E.
 3. FOR EACH TUS6M THERE WILL BE A H716 TO SUPPLY ITS DC POWER. (EXCEPT AS NOTED IN STEP 5)
 4. FOR THE FOLLOWING AC VOLTAGES MAKE THE CORRESPONDING JUMPER CONNECTIONS ON THE TUS6 TRANSFORMER.
117V JUMPER 1-3, 2-4
230V JUMPER 2-3
 5. FOR SMALL DESK TOP SYSTEMS THE POWER CONTROL AND POWER SUPPLY WILL NOT BE USED, THE TUS6 WILL GET +5V AND -15V FROM THE PDP-8E OMNIBUS, USE AWG #14 TWISTED PAIRS BETWEEN THE 8E AND TUS6.
 6. DC WIRING IS THE SAME FOR BOTH H716B AND H716D
 7. PLUG CABLE INTO EITHER OF ITS INDICATED LOCATIONS, THE OTHER LOCATION WILL NOT BE USED, AS THE TUS6'S ARE NOT SERIALLY CABLED TOGETHER. (BC02X-3)
 8. ALL DC POWER WIRES TO BE #14 AWG STRD TEFLON.
 9. M868 PLUGS INTO TUS6 AS SHOWN AT LEFT.

REV	CHANGE NO.	REV
A	TD8E-00001	A
B	TD8E-00002	B

ADAMS
11/3/72
ADAMS
4/2/72

REV	DESCRIPTION	DATE	BY
1	POWER WIRING	11/3/72	ADAMS
2	REVISIONS		

FIRST USED ON OPTION/MODEL	QTY.	DESCRIPTION	PART NO.	REV.
TD8-E				

UNLESS OTHERWISE SPECIFIED	DRG. DIMENSIONS	ANGLE	FINISH
DECIMALS	3.0° 30'		
FRACTIONS			
REMOVE BURRS AND BREAK SHARP CORNERS SURFACE QUALITY			

MATERIAL	SCALE	SIZE CODE	NUMBER	REV.
	A-M-TD8-E	DIC	TD8-E-3	B

DIGITAL EQUIPMENT CORPORATION
MAYNARD, MASSACHUSETTS

PARTS LIST

MADE BY KEN GUILICK
DATE 8/6/69
CHKD C. VALLIANT
DATE 8/26/69
ISSUED SECT. 1

CHECKED D. HEALEY
DATE 8/19/69
PROB E. R. TOMPKINS
DATE 8/26/69
ISSUED SECT. 1

ITEM NO.	DWG NO. / PART NO.	DESCRIPTION	TU56-H	TU56	TU56-M	TU56-MR	TU56-HC	TU56-C	TU56-MD	TU56-MC	TU56-MH	TU56-MJ
1	E-AD-7006320-1-0	PAWEL FRONT ASSEMBLY	1	1	1	1	1	1	1	1	1	1
2	E-AD-7006320-2-0	PAWEL FRONT ASSEMBLY	1	1	1	1	1	1	1	1	1	1
3	E-AD-7006319-1-0	CHASSIS ASSEMBLY	1	1	1	1	1	1	1	1	1	1
4	E-AD-7006319-2-0	CHASSIS ASSEMBLY	1	1	1	1	1	1	1	1	1	1
5	9006078-1	PCB PWR 10-32 X 3/8 ING SST	4	4	4	4	4	4	4	4	4	4
6	1209600	LID SUPPORT #43067 CHAMIZAR & FANQONAR	2	2	2	2	2	2	2	2	2	2
7	9008135	WAFER CURVED #0250-0075 ASSOC SER	2	2	2	2	2	2	2	2	2	2
8	9008146	WAFER FLAT .630 D.X.231 D.X.048 THK SST	4	4	4	4	4	4	4	4	4	4
9	D-AD-7006321-0-0	WAFER ASSY TU56	1	1	1	1	1	1	1	1	1	1
10	9006075-1	PCB PWR HD PWR #10-32 X 3/4 LG SST	2	2	2	2	2	2	2	2	2	2
11	9006565	NOT KEYS #10-32	6	6	6	6	6	6	6	6	6	6
12	D-UB-725-0-0	POWER SUPPLY 725 +	1	1	1	1	1	1	1	1	1	1
13	9006021-1	PCB PWR HD PWR 6-32 X 5/16 LG SST	5	5	5	5	5	5	5	5	5	5
14	9007651	WAFER EXT TOUCH #6 HORN	3	3	3	3	3	3	3	3	3	3
15	9007917	CONN SOLIDWIRE #50902 JARBERS	12	64	64	64	32	32	32	32	32	32
16	9007193	CONN SOLIDWIRE #3000541B	3	6	6	6	3	3	3	3	3	3
17	9007193	CONN SOLIDWIRE #3000541B	3	6	6	6	3	3	3	3	3	3
18	9007193	CONN SOLIDWIRE #3000541B	3	6	6	6	3	3	3	3	3	3
19	9007193	CONN SOLIDWIRE #3000541B	3	6	6	6	3	3	3	3	3	3
20	9107940-00	WAFER #125 JUNG STND THERMAL JUNG (D&K)	1	1	1	1	1	1	1	1	1	1
21	9107940-00	WAFER #125 JUNG STND THERMAL JUNG (D&K)	1	1	1	1	1	1	1	1	1	1
22	9107940-00	WAFER #125 JUNG STND THERMAL JUNG (D&K)	1	1	1	1	1	1	1	1	1	1
23	9107940-00	WAFER #125 JUNG STND THERMAL JUNG (D&K)	1	1	1	1	1	1	1	1	1	1
24	9107940-00	WAFER #125 JUNG STND THERMAL JUNG (D&K)	1	1	1	1	1	1	1	1	1	1
25	9107940-00	WAFER #125 JUNG STND THERMAL JUNG (D&K)	1	1	1	1	1	1	1	1	1	1
26	9107940-00	WAFER #125 JUNG STND THERMAL JUNG (D&K)	1	1	1	1	1	1	1	1	1	1
27	9107940-00	WAFER #125 JUNG STND THERMAL JUNG (D&K)	1	1	1	1	1	1	1	1	1	1
28	9107940-00	WAFER #125 JUNG STND THERMAL JUNG (D&K)	1	1	1	1	1	1	1	1	1	1
29	9107940-00	WAFER #125 JUNG STND THERMAL JUNG (D&K)	1	1	1	1	1	1	1	1	1	1
30	9107940-00	WAFER #125 JUNG STND THERMAL JUNG (D&K)	1	1	1	1	1	1	1	1	1	1
31	9107940-00	WAFER #125 JUNG STND THERMAL JUNG (D&K)	1	1	1	1	1	1	1	1	1	1
32	9107940-00	WAFER #125 JUNG STND THERMAL JUNG (D&K)	1	1	1	1	1	1	1	1	1	1
33	9107940-00	WAFER #125 JUNG STND THERMAL JUNG (D&K)	1	1	1	1	1	1	1	1	1	1
34	9107940-00	WAFER #125 JUNG STND THERMAL JUNG (D&K)	1	1	1	1	1	1	1	1	1	1
35	9107940-00	WAFER #125 JUNG STND THERMAL JUNG (D&K)	1	1	1	1	1	1	1	1	1	1
36	9107940-00	WAFER #125 JUNG STND THERMAL JUNG (D&K)	1	1	1	1	1	1	1	1	1	1
37	9107940-00	WAFER #125 JUNG STND THERMAL JUNG (D&K)	1	1	1	1	1	1	1	1	1	1
38	9107940-00	WAFER #125 JUNG STND THERMAL JUNG (D&K)	1	1	1	1	1	1	1	1	1	1
39	9107940-00	WAFER #125 JUNG STND THERMAL JUNG (D&K)	1	1	1	1	1	1	1	1	1	1
40	9107940-00	WAFER #125 JUNG STND THERMAL JUNG (D&K)	1	1	1	1	1	1	1	1	1	1
41	9107940-00	WAFER #125 JUNG STND THERMAL JUNG (D&K)	1	1	1	1	1	1	1	1	1	1
42	9107940-00	WAFER #125 JUNG STND THERMAL JUNG (D&K)	1	1	1	1	1	1	1	1	1	1
43	9107940-00	WAFER #125 JUNG STND THERMAL JUNG (D&K)	1	1	1	1	1	1	1	1	1	1
44	9107940-00	WAFER #125 JUNG STND THERMAL JUNG (D&K)	1	1	1	1	1	1	1	1	1	1

DEC FORM NO.16-1031
92A 110

DEC FORM NO.16-1031
92A 110

DIGITAL EQUIPMENT CORPORATION
MAYNARD, MASSACHUSETTS

PARTS LIST

MADE BY KEN GUILICK
DATE 8/6/71
CHKD C. VALLIANT
DATE 8/26/69
ISSUED SECT. 1

CHECKED D. HEALEY
DATE 8/19/71
PROB E. R. TOMPKINS
DATE 8/26/69
ISSUED SECT. 1

ITEM NO.	DWG NO. / PART NO.	DESCRIPTION	TU56-H	TU56	TU56-M	TU56-MR	TU56-HC	TU56-C	TU56-MD	TU56-MC	TU56-MH	TU56-MJ
25	D-1A-7407534-0-0	COVER PLATE - BALP	1	1	1	1	1	1	1	1	1	1
26	C-1A-7405152-1-0	INTRO CABLE	1	1	1	1	1	1	1	1	1	1
27	9006078-1	PCB PWR 10-32 X 3/8 ING SST	4	4	4	4	4	4	4	4	4	4
28	D-1A-80228-3-0	CHASSIS KIBOX #098-#098	1	1	1	1	1	1	1	1	1	1
29	9006075-1	PCB PWR HD PWR #10-32 X 3/4 LG SST	2	2	2	2	2	2	2	2	2	2
30	1309351-09	WAFER H-LOCK SOCKET MOUNTING (9 PIN)	1	2	2	2	2	2	2	2	2	2
31	9006075-1	PCB PWR HD PWR #10-32 X 3/4 LG SST	2	2	2	2	2	2	2	2	2	2
32	D-1A-7006413-0-0	OPTICAL CABLE TU56	1	1	1	1	1	1	1	1	1	1
33	1309378	PIN CONNECTOR	8	16	16	8	16	16	8	8	8	8
34	C-1A-7406907-0-0	BRACKET, RT, ANGUL SUPPORT	2	2	2	2	2	2	2	2	2	2
35	D-1A-7408009-0-0	BRACKET, RT BRACKET	1	1	1	1	1	1	1	1	1	1
36	C-AD-7408322-0-0	BRACKET BLOCK	2	2	2	2	2	2	2	2	2	2
37	C-AD-7408321-0-0	MOUNTING BRACKET	1	1	1	1	1	1	1	1	1	1
38	9006340-0	WAFER PWC HANDBUS CLASP (DK 4-375P)	2	2	2	2	2	2	2	2	2	2
39	9006341-0	WAFER PWC HANDBUS CLASP (DK -188P)	2	2	2	2	2	2	2	2	2	2
40	9006981-0-0	WAFER WIRING HANDBUS	1	1	1	1	1	1	1	1	1	1
41	9007016	CONNECTOR	2	2	2	2	2	2	2	2	2	2
42	9006150	LOG #10 COVER, TIN PLATED	1	1	1	1	1	1	1	1	1	1
43	E-AD-7006407-2-0	TABLE TOP COVER ASSY (TICOV KIT)	1	1	1	1	1	1	1	1	1	1

DEC FORM NO.16-1031
92A 110

DEC FORM NO.16-1031
92A 110

DIGITAL EQUIPMENT CORPORATION
MAYNARD, MASSACHUSETTS

PARTS LIST

MADE BY KEN GUILICK
DATE 8/6/69
CHKD C. VALLIANT
DATE 8/26/69
ISSUED SECT. 1

CHECKED D. HEALEY
DATE 8/19/69
PROB E. R. TOMPKINS
DATE 8/26/69
ISSUED SECT. 1

ITEM NO.	DWG NO. / PART NO.	DESCRIPTION	TU56-H	TU56	TU56-M	TU56-MR	TU56-HC	TU56-C	TU56-MD	TU56-MC	TU56-MH	TU56-MJ
43	C-1A-7408211-0-0	SHIPPING BRACKET	1	1	1	1	1	1	1	1	1	1
44	1209331	DECTAPE TAKE-UP REEL	1	2	2	2	2	2	2	2	2	2

DEC FORM NO.16-1031
92A 110

DEC FORM NO.16-1031
92A 110

DEC FORM NO.16-1031
92A 110

DEC FORM NO.16-1031
92A 110

DEC FORM NO.16-1031
92A 110

DEC FORM NO.16-1031
92A 110

DRWG NO
K-WL-TU56-0-2

REV LTR

D

REV LTR	ECO NO	DATE	ENG
A	TU56-00005	12-8-69	E.K.
B	TU56-00009	1-30-70	E.K.
C	TU56-00021	4-13-70	E.K.
D	TU56-00026	5-21-70	E.K.

REVISIONS

FIRST USED ON OPTION/MODEL
TU56

DRAWN
GULLICK

DATE
7-8-69

TITLE
TU56
DEC TAPE

CHECKED
A. Rubin

DATE
8-20-69

FOR TAPE # FILE #

ENG
E. Kuffner

DATE
8/25/69

SIZE CODE DWG. NO.
K WL TU56-0-2

PROJ. ENG
E. Kuffner

DATE
8/25/69

REV LTR
D

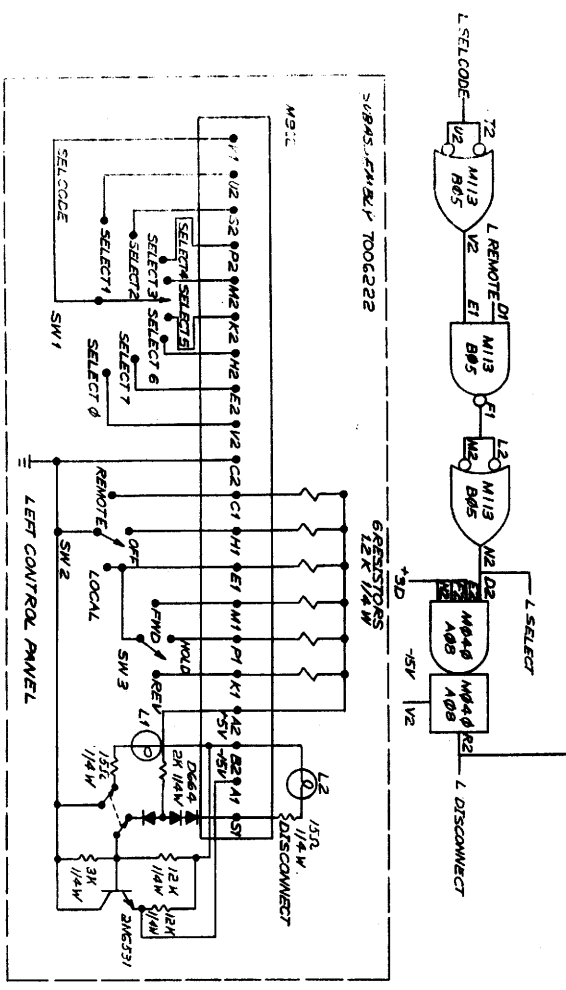
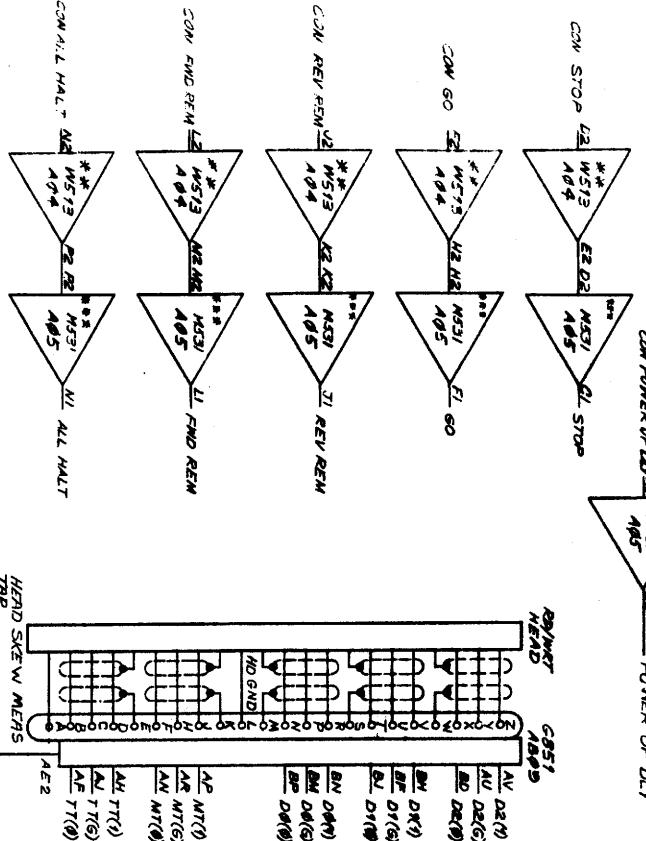
PROD
E. Kuffner

DATE
8/25/69

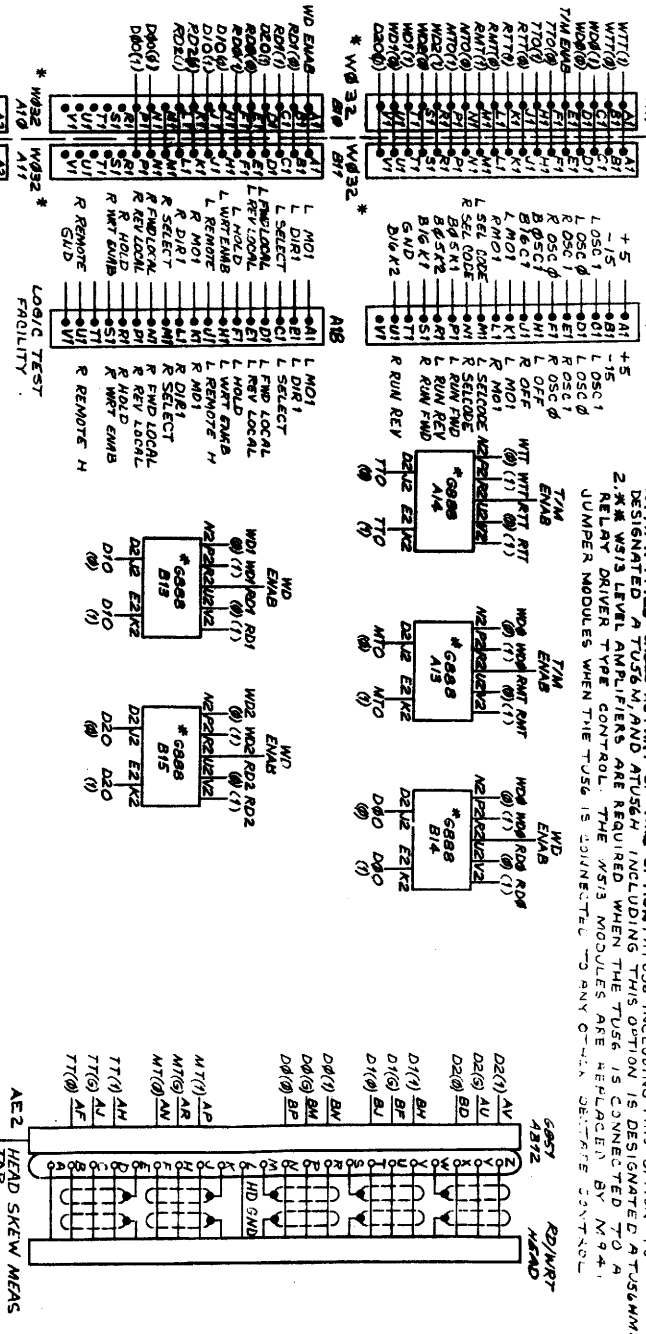
SCALE NONE SHEET 1 OF 1 DIST.



MAYNARD, MASSACHUSETTS
EQUIPMENT CORPORATION
NEXT HIGHER ASSY
TU56



LEFT HAND TRANSPORT
LEFT CONTROL PANEL



RIGHT HAND TRANSPORT
RIGHT CONTROL PANEL

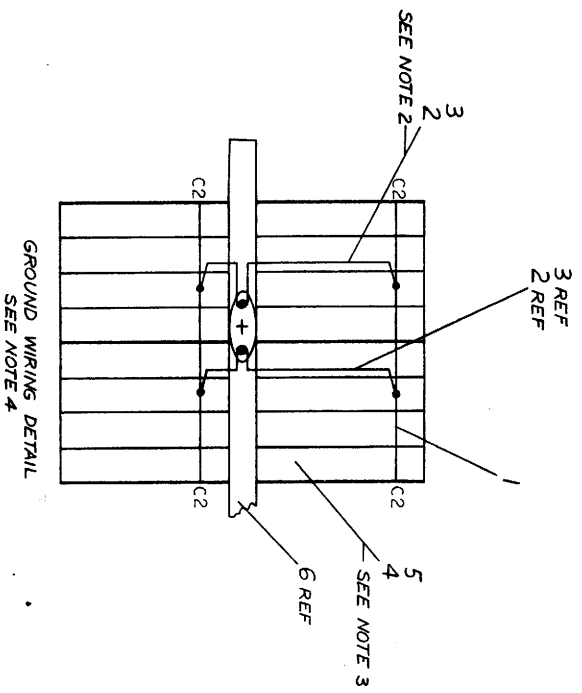
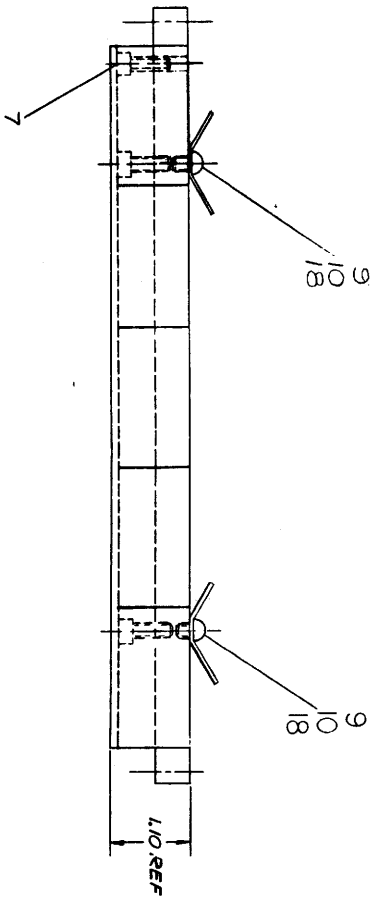
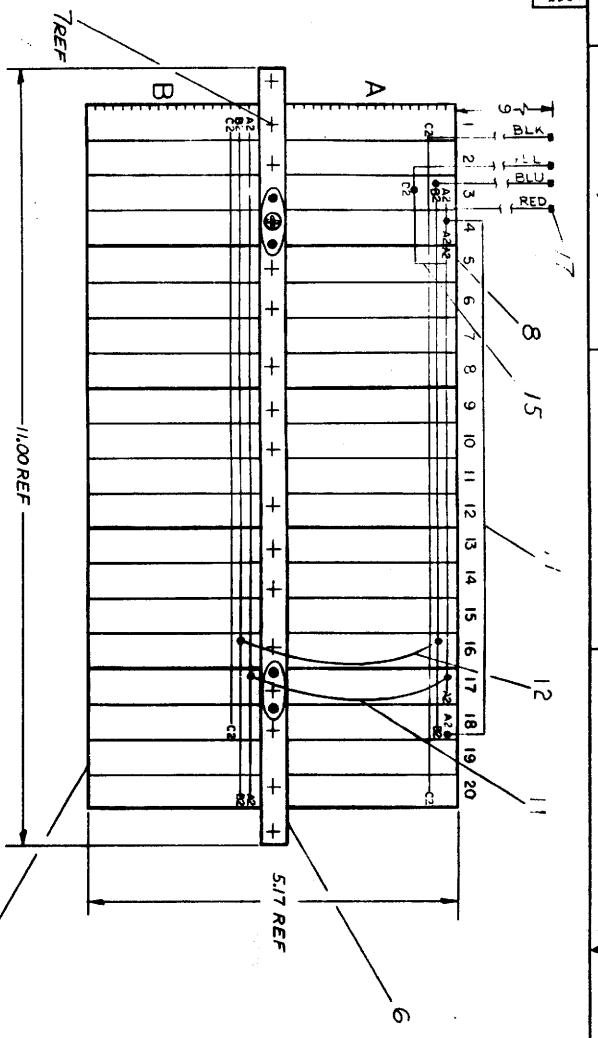
TEST NAME	A04	TEST
W032	A04	W032
W033	A04	W033
W034	A04	W034
W035	A04	W035
W036	A04	W036
W037	A04	W037
W038	A04	W038
W039	A04	W039
W040	A04	W040
W041	A04	W041
W042	A04	W042
W043	A04	W043
W044	A04	W044
W045	A04	W045
W046	A04	W046
W047	A04	W047
W048	A04	W048
W049	A04	W049
W050	A04	W050
W051	A04	W051
W052	A04	W052
W053	A04	W053
W054	A04	W054
W055	A04	W055
W056	A04	W056
W057	A04	W057
W058	A04	W058
W059	A04	W059
W060	A04	W060
W061	A04	W061
W062	A04	W062
W063	A04	W063
W064	A04	W064
W065	A04	W065
W066	A04	W066
W067	A04	W067
W068	A04	W068
W069	A04	W069
W070	A04	W070
W071	A04	W071
W072	A04	W072
W073	A04	W073
W074	A04	W074
W075	A04	W075
W076	A04	W076
W077	A04	W077
W078	A04	W078
W079	A04	W079
W080	A04	W080
W081	A04	W081
W082	A04	W082
W083	A04	W083
W084	A04	W084
W085	A04	W085
W086	A04	W086
W087	A04	W087
W088	A04	W088
W089	A04	W089
W090	A04	W090
W091	A04	W091
W092	A04	W092
W093	A04	W093
W094	A04	W094
W095	A04	W095
W096	A04	W096
W097	A04	W097
W098	A04	W098
W099	A04	W099
W100	A04	W100

TEST NAME	A04	TEST
W032	A04	W032
W033	A04	W033
W034	A04	W034
W035	A04	W035
W036	A04	W036
W037	A04	W037
W038	A04	W038
W039	A04	W039
W040	A04	W040
W041	A04	W041
W042	A04	W042
W043	A04	W043
W044	A04	W044
W045	A04	W045
W046	A04	W046
W047	A04	W047
W048	A04	W048
W049	A04	W049
W050	A04	W050
W051	A04	W051
W052	A04	W052
W053	A04	W053
W054	A04	W054
W055	A04	W055
W056	A04	W056
W057	A04	W057

The drawing and associated components, items, and data are the property of the drawing office and shall not be reproduced or transmitted in any form or by any means, electronic, mechanical, photocopying, recording, or by any information storage and retrieval system, without the prior written permission of the drawing office.

ITEM NO.	COMP	POL	FROM	TO	POL
1/3	RESISTOR	X	4852	4851	X
1/3	RESISTOR	-	4852	4851	-
1/4	CAPACITOR	-	84851	84852	-
1/4	CAPACITOR	-	84851	84852	-

- NOTES:
- CONNECTIONS ON ITEMS #1 & #2 TO BE SOLDERED AND LOCATED AT MINIMUM PRACTICAL HEIGHT ABOVE BLOCK
 - CONN BLOCK TO BE GROUNDED
 - TO GND LUG AS SHOWN
 - USE YELLOW WIRE (ITEM #3) FOR MACHINE WRAPPED & BLUE WIRE (ITEM #4) FOR HAND WRAPPED WIRING
 - JUMPER GROUND BUSSING AS SHOWN / PLACE



CHK	CHANGE NO	REV
	TU56-00005	A
	TU56-00013	B
	TU56-00017	C
	TU56-00055	D
	TU56-00062	E

TOLERANCES
DECIMALS
XXX = ± .005
XX = ± .02
X = ± .1

WIRING ASSY
TU56

DATE: 8/1/59
BY: [Signature]
CHECKED: [Signature]
APPROVED: [Signature]

SCALE: 1/1

SHEET: 1 OF 1

**DIGITAL EQUIPMENT CORPORATION
MAYNARD, MASSACHUSETTS**

PARTS LIST

MADE BY KEN GULICK	CHECKED D. HEALY	SECTION 1
DATE 6/19/69	DATE 7/23/69	ISSUED SECT. 1
ENG <i>E. [unclear]</i>	PROD C. D. [unclear]	
DATE 5/26/69	DATE 8/26/69	

QUANTITY / VARIATION

ITEM NO.	DWG NO. / PART NO.	DESCRIPTION	SECTION	ISSUED SECT.	QTY	VARIATION
1	1205541	BUS STRIP				
2	9107560-01	22 AWG BUS WIRE				
3	9117265-09	#22 TUBING, TEFLON, WHITE				
4	9105740-44	30 AWG SOLID TEF INS, WIRE, YELLOW				
5	9105740-66	30 AWG SOLID TEF INS, WIRE, BLUE				
6	6-1A-7407393-0-0	MTG BAR (5 BLOCKS) TU56				
7	9006120	SCR. PHL. HD SELF-TAPPING 8-32 x 5/8				
8	1205348	288 PIN CONN BLOCK				
9	9006775	TERMINAL #2116-08-00 SHAKEPROOF				
10	9008143	SCR. PHL. HD SELF-TAPPING 8-32 x 1/2				
11	9107350-22	22 AWG STRD TEF INS WIRE, RED				
12	9107530-66	22 AWG STRD TEF INS WIRE, BLU				
13	7408016	RESISTOR 100 OHMS 1/4 W 5% CGW/TERMI PTS				
14	7408015	CAPACITOR 22 MED 35V S. TANT W/TERMT PTS				
REF	K-WI-TU56-0-2	WIRE LIST				
15	9107350-44	22 AWG STRD TEF INS WIRE, YEL				
16	9107350-00	22 AWG STRD TEF INS WIRE, BLK				
17	9007917	CONN. SOLDERLESS #50302 ANGLES				
18	9006634	WASHER INT #8				

0-1-103900

TITLE	WIRED ASSY TU56	ASSY NO.	D-AD-7006321-0-0	SIZE CODE	A PL	NUMBER	7006321-0-0	REV	E	ECO NO.	TU56-000062
SHEET	1	OF	1	DIST.							

DIGITAL EQUIPMENT CORPORATION
RAYNARD, MASSACHUSETTS

ACCESSORY LIST

MADE BY J. Ingledue
 DATE 5/31/72
 ENG W. Luf
 DATE 7/17/72

SECTION
 ISSUED SECT.
 PA PAPER TAPE ASCII
 PB PAPER TAPE BINARY
 PM PAPER TAPE
 READ-IN-MODE

LEGEND
 DN DOCUMENT CHANGE
 NOTICE
 PA PAPER TAPE ASCII
 PB PAPER TAPE BINARY
 PM PAPER TAPE
 READ-IN-MODE

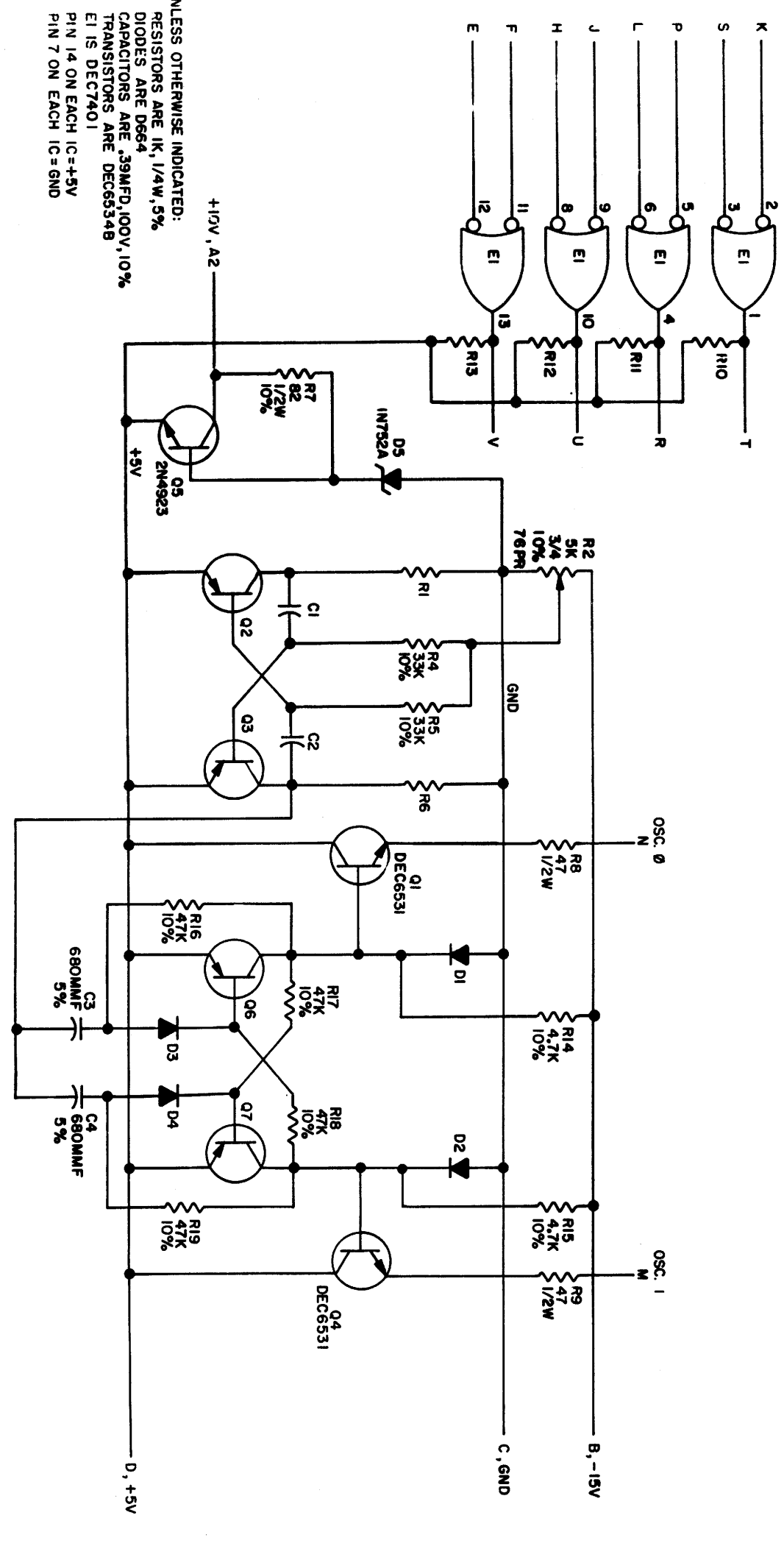
ITEM NO.	DWG NO./PART NO.	DESCRIPTION	QUANTITY	VARIATION
1	BC02X-03	Select Cable	1	
2	74-8321	Mounting Bracket. (H950 Cabinet)	1	
3	74-8322	Spacer Block (H950 Cabinet)	2	
4	TU56-0	Complete Print Set (see A-HL-TU56-0)	1	
5	DRC-00-SECT-D	Maintenance Manual	1	
6	12-9331	Take Up Reel	2	
7	TUC-01	Head Cleaning Kit	1	
8	74-5152-1	Head Cable	1	
9	G742	Jump Module (Remove M531 and replace with G742 for PDP-11 add-ons and OEM's)	1	
10	74-5996	Certified DECTape 12 Bit Format	2	
11	74-5996-1	Certified DECTape 18 Bit Format	2	
12	NOTE: Items 12 thru 14 are for Rack Mountable Field Add-on shipments only.			
12	91-7673-06	AC Line Cord 6'	1	
13	90-8851	Mounting Hardware Bag	1	
14	91-7710 and 90-8849	Hook Up Wire	1	
15	DRC-TU56-1PB-1	ILLUSTRATED PARTS BREAKDOWN	1	

*NOTE: Supply Item 10 for PDP-5, 8 Family, and 12; Item 11 for PDP-1, 4, 6, 7, 9, 10, 11, and 15.
 NOTE: When unit is to be connected to a TU56 or a relay driver control, refer to DECTape notes. When unit is to be installed on a tubular style cabinet, refer to DECTape notes.

TITLE DECTape DRIVE UNIT ACCESSORY SHIPPING KIT
 ASSY. NO. SHEET 1 OF 1
 SIZE CODE A A L
 NUMBERS TU56-0-5
 REV. E
 ECO NO. TU56-000772

KIT CHECK BY _____ DATE _____
 INSTALLATION CHECK BY _____ DATE _____

THIS SCHEMATIC IS FURNISHED ONLY FOR TEST AND MAINTENANCE PURPOSES. THE CIRCUITS ARE PROPRIETARY IN NATURE AND SHOULD BE TREATED ACCORDINGLY. COPYRIGHT 1969 BY DIGITAL EQUIPMENT CORPORATION



UNLESS OTHERWISE INDICATED:
 RESISTORS ARE 1K, 1/4W, 5%
 DIODES ARE D664
 CAPACITORS ARE .39MFD, 100V, 10%
 TRANSISTORS ARE DEC6534B
 EI IS DEC7401
 PIN 14 ON EACH IC = +5V
 PIN 7 ON EACH IC = GND

REV. C	1-0-65589	CS	B
	NUMBER	CODE	SIZE

REVISIONS		
CHK	CHG NO	REV
✓	00001	A
✓	00002	B
✓	00003	C

DRN.	DATE	CHK'D.	DATE
007289	11/8/69		
	1/17/69		
	10/1/69		

TRANSISTOR & DIODE CONVERSION CHART			
DEC	EIA	DEC	EIA
D664	1N3606		
DEC6534B	MP36534B		
DEC6531	MP36531		
2N4923	SAME		

digital
 EQUIPMENT CORPORATION
 MAYNARD, MASSACHUSETTS

TITLE			
SIZE	CODE	NUMBER	REV
B	CS	6859-0-1	C

CLOCK & REGULATOR G859

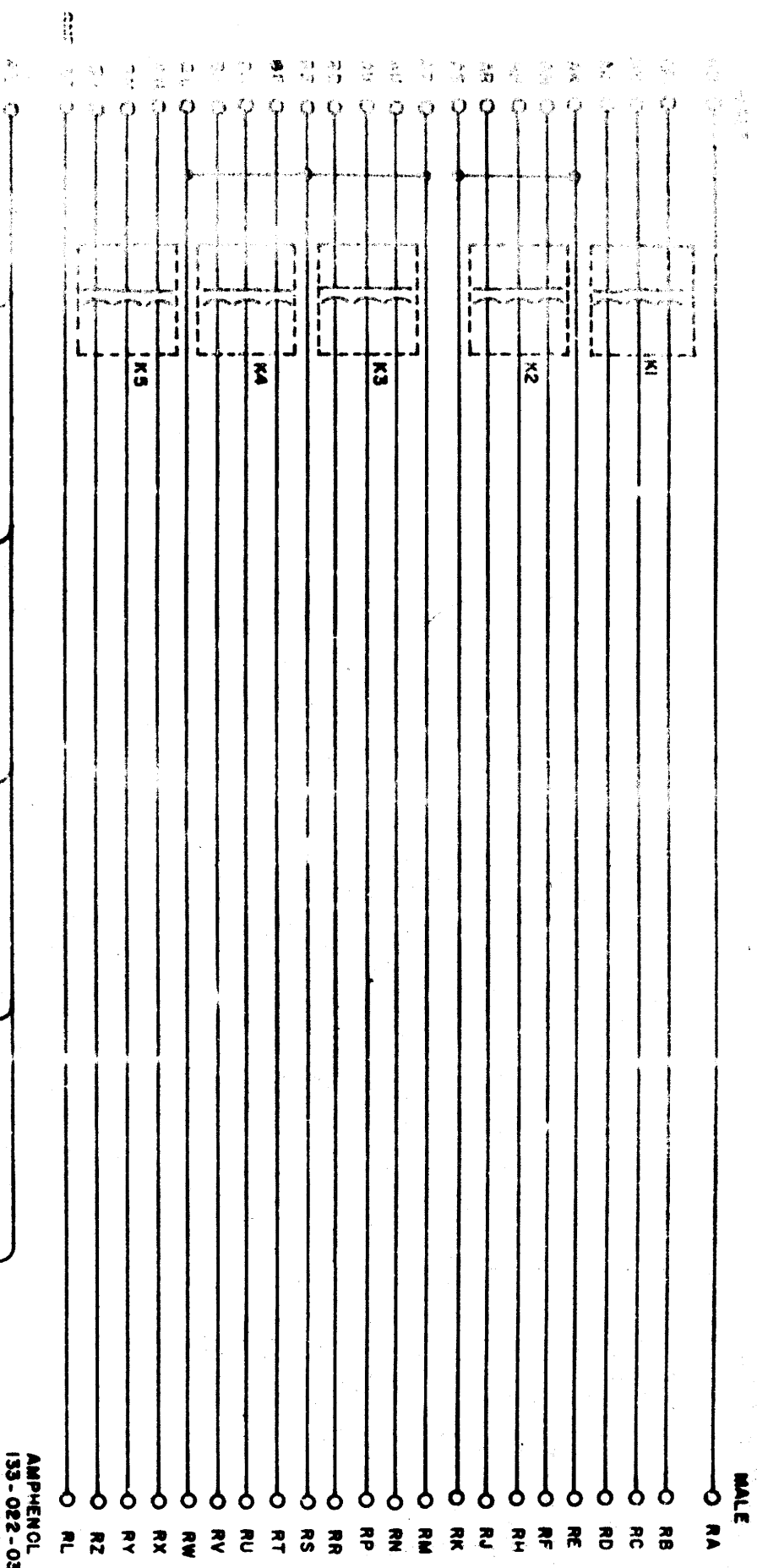
PRINTED CIRCUIT REV. A

FORM NO. 105

4 P10X

Dist. 3-11-73 4143

THIS SCHEMATIC IS DRAWN ONLY FOR TEST AND MAINTENANCE PURPOSES. THE CIRCUITS ARE INDICATED IN BOLD AND SHOULD BE TREATED ACCORDINGLY. COMPONENTS ARE NOT TO BE REPLACED WITHOUT CONSULTATION.



AMPHENOL
153-022-03

REVISIONS		
REV	NO	DATE
1	1	1-25-48
2	1	1-25-48
3	1	1-25-48

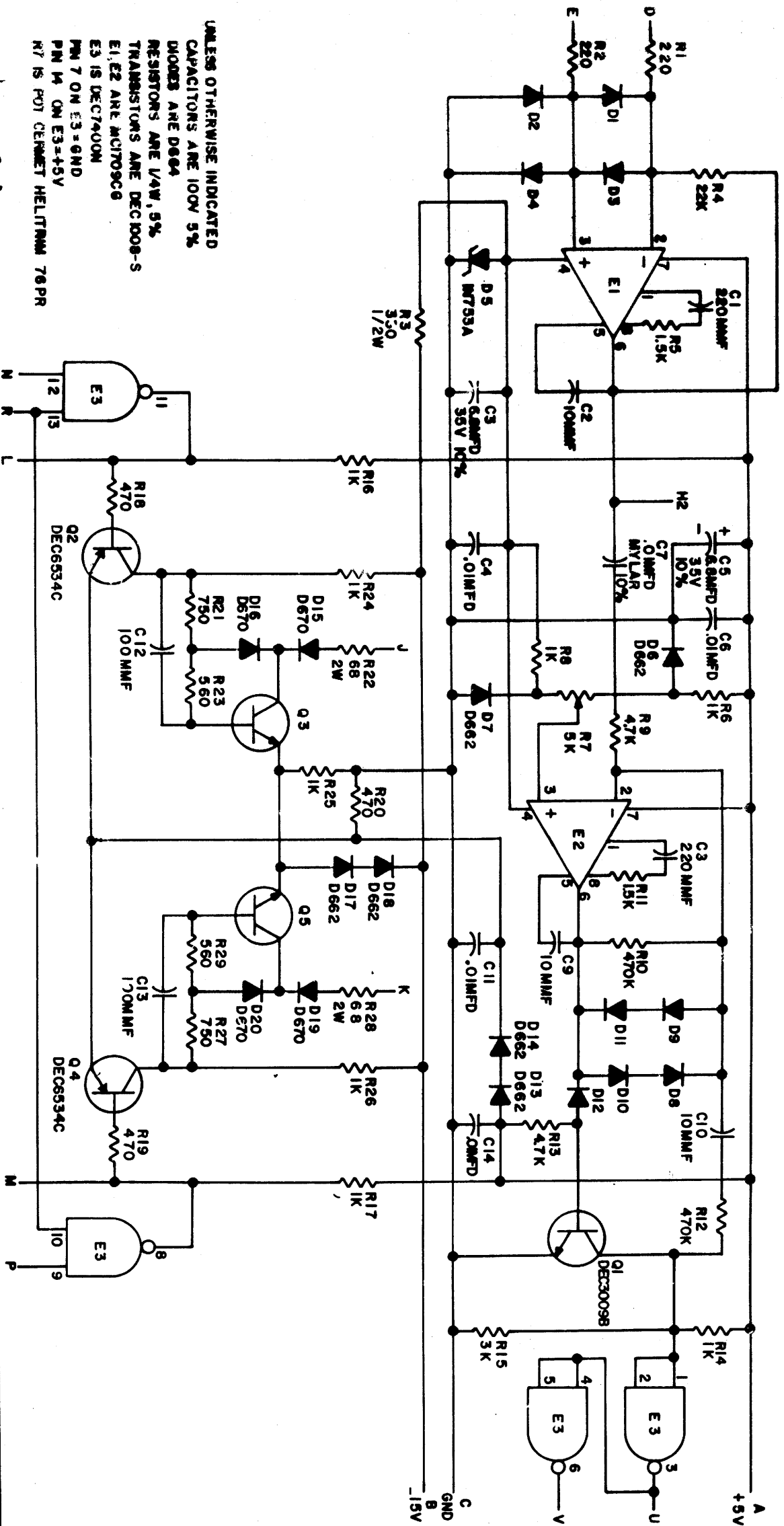
DATE	BY	CHKD	BY
1-25-48	N. W. PORTER	N. W. PORTER	N. W. PORTER
1-25-48	N. W. PORTER	N. W. PORTER	N. W. PORTER
1-25-48	N. W. PORTER	N. W. PORTER	N. W. PORTER

DATE	BY	CHKD	BY
DEC	EIA	DEC	EIA
DEC	EIA	DEC	EIA

EQUIPMENT CORPORATION
MAYNARD MASSACHUSETTS

TITLE: **RELAY 6851**
 SIZE: B
 CODE: CS
 NUMBER: 685-0-1
 PRINTED CIRCUIT: 18

THIS SCHEMATIC IS FURNISHED ONLY FOR TEST AND MAINTENANCE PURPOSES. THE CIRCUITS ARE PROPRIETARY IN SERVICE AND SHOULD BE TREATED AS SUCH. COPYRIGHT 1968 BY DIGITAL EQUIPMENT CORPORATION.



REVISIONS		
CHK	CHK NO	REV
	00001	A
	00002	B
	00003	C

H. DRAB
Date: 11-11-72
H. DRAB
Date: 11-11-72

DRN.	DATE	DATE
DRN. 1	11/11/72	11/11/72
DRN. 2	11/11/72	11/11/72

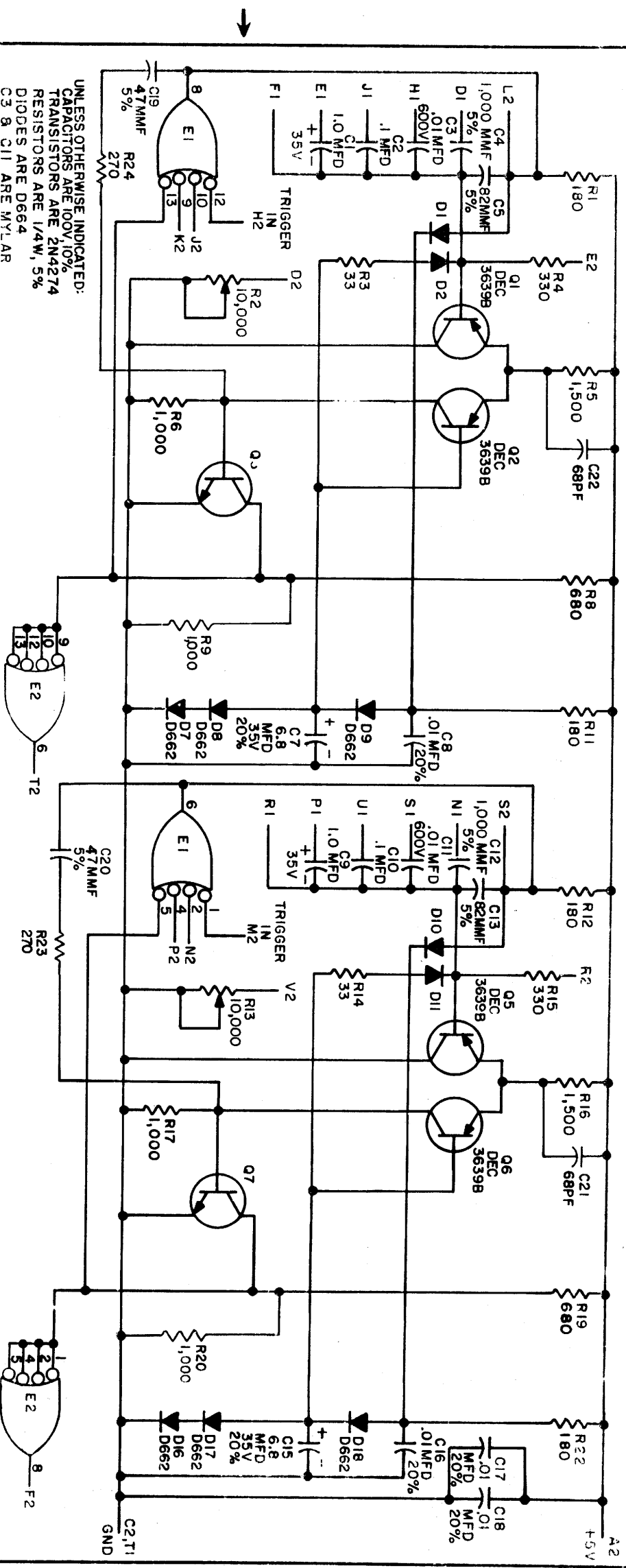
TRANSISTOR & DIODE CONVERSION CHART			
DEC	EIA	DEC	EIA
D664	1N645	DEC100-S	MCT09C6
D662	1N645	DEC100-S	MCT09C6
D670	SAW	DEC100-S	MCT09C6
Q2	2N302	DEC100-S	MCT09C6

digital
EQUIPMENT CORPORATION
MAYNARD, MASSACHUSETTS

TITLE			
MANCHESTER	READER/WRI	NUMBER	REV.
MANCHESTER	READER/WRI	6888-0-1	B
PRINTED CIRCUIT REV.			

DIST. 320,034, UFR 3

THIS SCHEMATIC IS FURNISHED ONLY FOR TEST AND MAINTENANCE PURPOSES. THE CIRCUITS ARE PROPRIETARY IN NATURE AND SHOULD BE TREATED ACCORDINGLY. COPYRIGHT © 1957 BY DIGITAL EQUIPMENT CORPORATION.



UNLESS OTHERWISE INDICATED:
 CAPACITORS ARE 100V, 10%
 TRANSISTORS ARE 2N4274
 RESISTORS ARE 1/4W, 5%
 DIODES ARE D664
 C3 & C11 ARE MYLAR
 E1 IS DEC74H40N
 PIN 14 ONICS = +5V
 R2 & R13 ARE HELLITRIM POT #79PR
 10MFD CAPACITORS ARE TANTALUM
 E2 IS DECA13N

PARTS LIST A-PL-M302-0-0

REVISIONS			TRANSISTOR & DIODE CONVERSION CHART			TITLE	
CHK	CHG NO.	REV.	DRN.	DATE	DEC	EIA	SIZE
	8507	B	Mr. Miller	6-5-67	2N4274	SAME	B
	6719	C		7/1/67	DEC3639B	IN645	CS
	6881	D		6/21/67	D662	IN3606	M302-0-1
	7077	E			D664		L
	00001	F					
	00002	G					
	00003	H					
	00004	I					

DRN.	DATE	DEC	EIA
Mr. Miller	6-5-67	2N4274	SAME
Mr. Miller	7/1/67	DEC3639B	IN645
Mr. Miller	6/21/67	D662	IN3606
Mr. Miller		D664	

DRN.	DATE	DEC	EIA
Mr. Miller	6-5-67	2N4274	SAME
Mr. Miller	7/1/67	DEC3639B	IN645
Mr. Miller	6/21/67	D662	IN3606
Mr. Miller		D664	

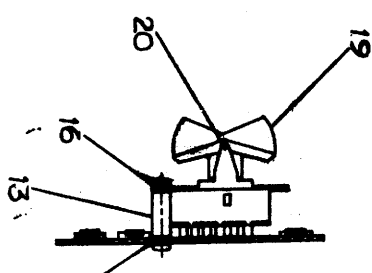
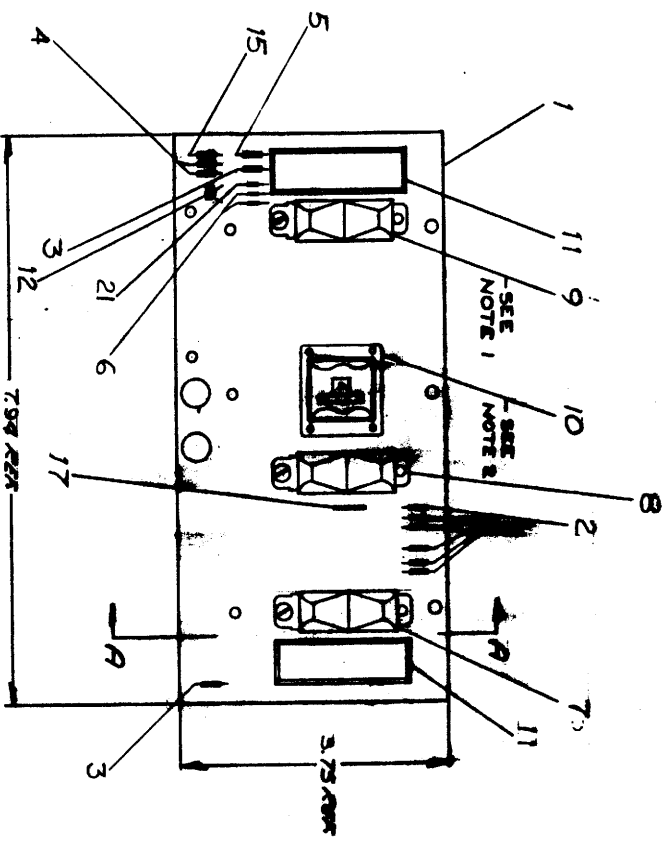
ONE SHOT DELAY M302

DEC FORM NO. DRB 102

DIST 324/434/435 4

The drawing shall conform to the standards of the American Institute of Electrical Engineers, Inc. (AIEE) and shall be prepared in accordance with the standards of the American Institute of Electrical Engineers, Inc. (AIEE) and shall be prepared in accordance with the standards of the American Institute of Electrical Engineers, Inc. (AIEE).

REVISIONS		
CHK	CHANGE NO.	REV.
	FU56-00020	B
	4-3-70	
	LUTTIG	
	15408500-00002	C
	11/20/70	
	LUTTIG	
	15408500-00003	D
	9/24/73	
	H. DRAB	
	1/25/73	



SECTION A-A

18 - (TO BE MT. INSIDE PANEL)

- NOTES:
1. HAND DEGREASE ONLY. DO NOT DEGREASE AS IT WILL CAUSE MALFUNCTION IN SWITCHES.
 2. IN SOLDERING OPERATIONS DO NOT ALLOW FLUX OR CLEANING AGENT TO ENTER SWITCH.

FIRST USE OF OPTION/MODEL
 1556
 TOUGHANGES
 XIM - 270GS
 NY 270E
 N.E.I.

DO NOT SCALE DRAWING
 ALL DIMENSIONS SPECIFIED
 UNLESS OTHERWISE SPECIFIED

QTY.	DESCRIPTION	PART NO.	REV.
1	SWITCH CONTROL PANEL (TU56)	DAD15408500-0-0	D

TITLE
 digital EQUIPMENT CORPORATION
 SWITCH CONTROL PANEL (TU56)

PARTS LIST

MADE BY <i>Paul J. Jurek</i>		CHECKED <i>D. Wall</i>		SECTION	
DATE <i>Oct 28, 1969</i>		DATE <i>1-30-70</i>		PC LAYOUT	
ENG <i>E. Lutting</i>		PROD <i>P. Johnson</i>		ISSUED SECT.	
DATE <i>3-18-70</i>		DATE <i>3/15/70</i>			

ITEM NO.	DWG NO./PART NO. CL BASIC VAR.	DESCRIPTION	UNIT COST	UNIT QUANTITY	QUANTITY ISSUED
REV	C-CS-5408500-0-1	CIRCUIT SCHEMATIC			
REV	N-CS-5408500-0-4	X-Y COORDINATE HOLE LOCATION			
REV	D-AH-5408500-0-5	ASSY/DRILLING HOLE LAYOUT			
1	5008499	ETCHED CKT. BD. TU56		1	
2	1300386	RES. 1.2K, 1/4W, 10% C.C.		6	
3	1301421	RES. 15 ^Ω , 1/4W, 10%		2	
4	1300490	RES. 12K, 1/4W, 10%		2	
5	1302388	RES. 2K, 1/4W, 5%		1	
6	1100114	DIODE D664		2	
7	1209614	SWITCH 3 POS. RS-38-FB PC		1	
8	1209613	SWITCH 3 POS. RS-39-FB PC		1	
9	1209612	SWITCH MINI RS-33-FB PC		1	
10	1209617	SWITCH 8 POS THUMBWHEEL SWITCH		1	
11	1209637	LIGHT		2	
12	1509338	TRANSISTOR, MPS 6531		1	
13	9008833	SPACER. 3/16 AF x 5/8 LG #4-40 AL		3	
14	9006880	SCREW, 6-32 x 1/4		6	
15	1300432	RES. 3K, 1/4W, 5%		1	
16	9006009-4	SCR SLOTTED HD #4-40 x 1/4 LG SST		6	
17	9107560-01	#22 AWG BUS WIRE		1	

TITLE	ASSY NO.	SIZE CODE	NUMBER	REV.	ECO NO.
TU56 CONTROL BOARD	D-AD-5408500-0-0	A PL	5408500-0-0	D	00002
	SHEET 1 OF 2	DIST.	324 137 145		

DEC FORM NO. 16-1027
DRA 123

5 PINK X

DIGITAL EQUIPMENT CORPORATION
MAYNARD, MASSACHUSETTS

PARTS LIST

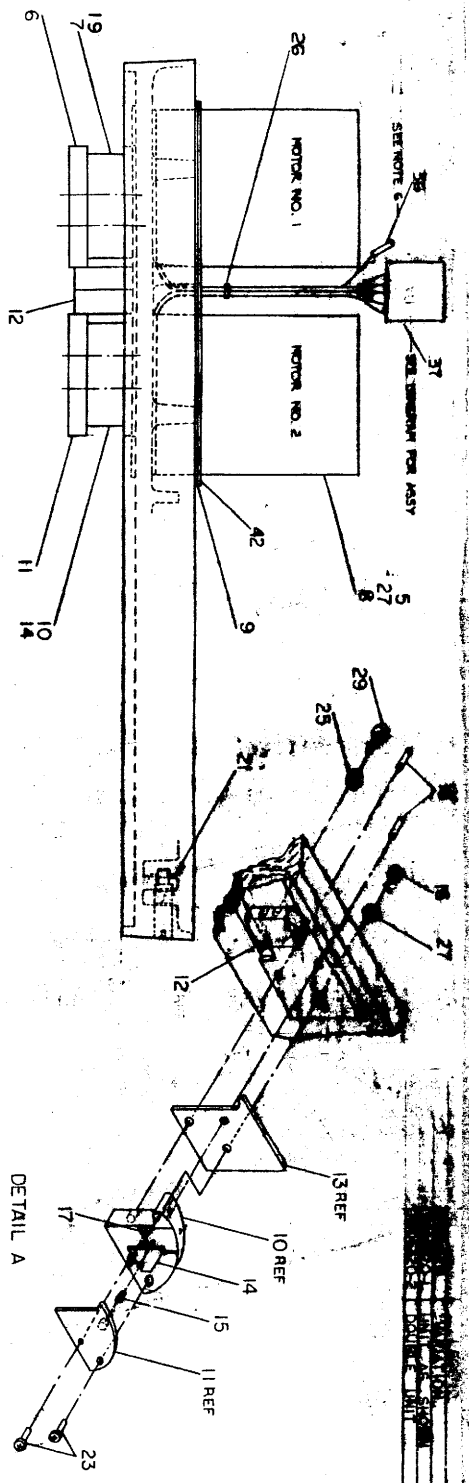
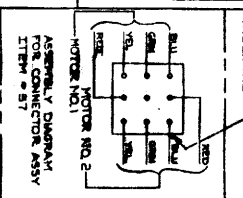
MADE BY <i>Paul J. Jurek</i>		CHECKED <i>D. Wall</i>		SECTION	
DATE <i>Oct. 28, 1969</i>		DATE <i>1-30-70</i>			
ENG <i>E. Lutting</i>		PROD <i>P. Johnson</i>		ISSUED SECT.	
DATE <i>3-18-70</i>		DATE <i>3/15/70</i>			

ITEM NO.	DWG NO./PART NO. CL BASIC VAR.	DESCRIPTION	QTY/VAR	UNIT COST	UNIT QUANTITY	QUANTITY ISSUED
18	9006632	WASHER INT TOOTH #4			3	
19	1209711-01	BUTTON, ROCKER			3	
20	9008842	DOWEL PIN			3	
21	1100121	DIODE, IN748 3.9V 10% 40mw			1	

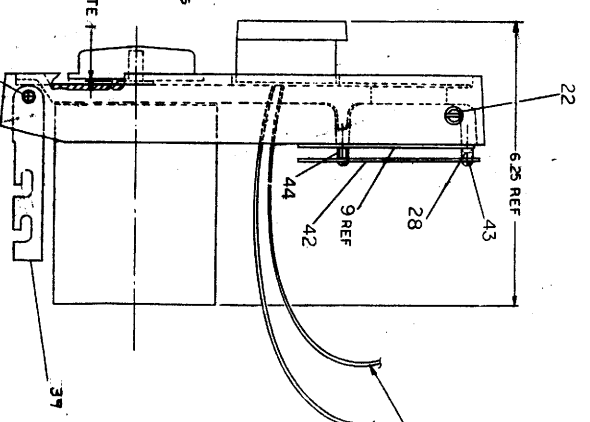
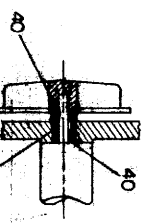
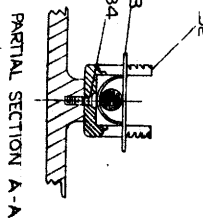
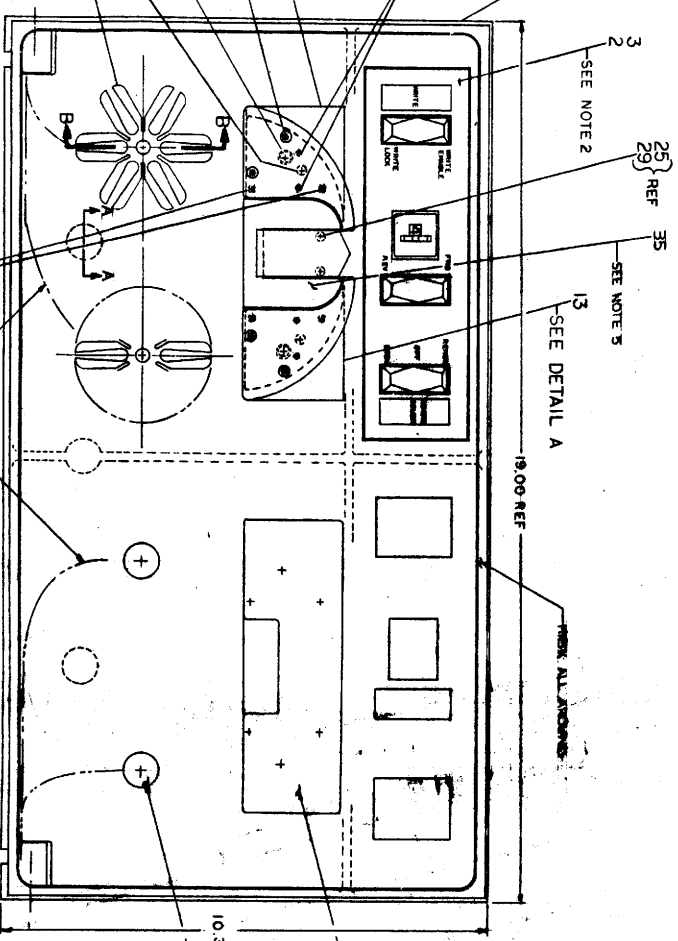
TITLE	ASSY NO.	SIZE CODE	NUMBER	REV.	ECO NO.
SWITCH CONTROL PANEL (TU56)	D-AD-5408500-0-0	A PL	5408500-0-0	D	00002
	SHEET 2 OF 2	DIST.			

DEC FORM NO. 16-1027
DRA 123

5 X



- NOTES**
1. POSITION OF ITEM NO. 4 (HUB) MUST BE OUT FROM GAUGE PART NO. 39.
 2. ASSEMBLE ITEM NO. 2 (OVERLAY) USING ITEM NO. 3 (ADHESIVE).
 3. COAT BOTH SURFACES REAR SURFACE OF PANEL (7) & ALLOW A MIN. OF ONE (1) MINUTE DRY TIME BEFORE ASSEMBLY.
 4. MASK SURFACES AS INDICATED BEFORE APPLYING ADHESIVE TO MTC. PANEL.
 5. ASSEMBLE ITEM 35 TO FRONT PANEL USING ITEM 2 (ADHESIVE) TO REAR SURFACE OF ITEM 35 (ONLY).
 6. CRIMP ITEM 36 TO MOTOR LEADS AS SHOWN. INSERT PINS INTO ITEM 37 (PINS) (ONLY).
 7. DO NOT ASSEMBLE ITEM 20 TO FRONT PANEL UNTIL ITEM 39 IS IN PLACE SO THAT ITEM 20 WILL GO THRU ITEM 39 AT ASSEMBLY.



REV	DATE	DESCRIPTION
1	12-28-61	ISSUED FOR PRODUCTION
2	1-10-62	REVISED TO SHOW CHANGES
3	2-15-62	REVISED TO SHOW CHANGES
4	3-15-62	REVISED TO SHOW CHANGES
5	4-15-62	REVISED TO SHOW CHANGES
6	5-15-62	REVISED TO SHOW CHANGES
7	6-15-62	REVISED TO SHOW CHANGES
8	7-15-62	REVISED TO SHOW CHANGES
9	8-15-62	REVISED TO SHOW CHANGES
10	9-15-62	REVISED TO SHOW CHANGES
11	10-15-62	REVISED TO SHOW CHANGES
12	11-15-62	REVISED TO SHOW CHANGES
13	12-15-62	REVISED TO SHOW CHANGES
14	1-15-63	REVISED TO SHOW CHANGES
15	2-15-63	REVISED TO SHOW CHANGES
16	3-15-63	REVISED TO SHOW CHANGES
17	4-15-63	REVISED TO SHOW CHANGES
18	5-15-63	REVISED TO SHOW CHANGES
19	6-15-63	REVISED TO SHOW CHANGES
20	7-15-63	REVISED TO SHOW CHANGES
21	8-15-63	REVISED TO SHOW CHANGES
22	9-15-63	REVISED TO SHOW CHANGES
23	10-15-63	REVISED TO SHOW CHANGES
24	11-15-63	REVISED TO SHOW CHANGES
25	12-15-63	REVISED TO SHOW CHANGES
26	1-15-64	REVISED TO SHOW CHANGES
27	2-15-64	REVISED TO SHOW CHANGES
28	3-15-64	REVISED TO SHOW CHANGES
29	4-15-64	REVISED TO SHOW CHANGES
30	5-15-64	REVISED TO SHOW CHANGES
31	6-15-64	REVISED TO SHOW CHANGES
32	7-15-64	REVISED TO SHOW CHANGES
33	8-15-64	REVISED TO SHOW CHANGES
34	9-15-64	REVISED TO SHOW CHANGES
35	10-15-64	REVISED TO SHOW CHANGES
36	11-15-64	REVISED TO SHOW CHANGES
37	12-15-64	REVISED TO SHOW CHANGES
38	1-15-65	REVISED TO SHOW CHANGES
39	2-15-65	REVISED TO SHOW CHANGES
40	3-15-65	REVISED TO SHOW CHANGES
41	4-15-65	REVISED TO SHOW CHANGES
42	5-15-65	REVISED TO SHOW CHANGES
43	6-15-65	REVISED TO SHOW CHANGES
44	7-15-65	REVISED TO SHOW CHANGES
45	8-15-65	REVISED TO SHOW CHANGES
46	9-15-65	REVISED TO SHOW CHANGES
47	10-15-65	REVISED TO SHOW CHANGES
48	11-15-65	REVISED TO SHOW CHANGES
49	12-15-65	REVISED TO SHOW CHANGES
50	1-15-66	REVISED TO SHOW CHANGES
51	2-15-66	REVISED TO SHOW CHANGES
52	3-15-66	REVISED TO SHOW CHANGES
53	4-15-66	REVISED TO SHOW CHANGES
54	5-15-66	REVISED TO SHOW CHANGES
55	6-15-66	REVISED TO SHOW CHANGES
56	7-15-66	REVISED TO SHOW CHANGES
57	8-15-66	REVISED TO SHOW CHANGES
58	9-15-66	REVISED TO SHOW CHANGES
59	10-15-66	REVISED TO SHOW CHANGES
60	11-15-66	REVISED TO SHOW CHANGES
61	12-15-66	REVISED TO SHOW CHANGES
62	1-15-67	REVISED TO SHOW CHANGES
63	2-15-67	REVISED TO SHOW CHANGES
64	3-15-67	REVISED TO SHOW CHANGES
65	4-15-67	REVISED TO SHOW CHANGES
66	5-15-67	REVISED TO SHOW CHANGES
67	6-15-67	REVISED TO SHOW CHANGES
68	7-15-67	REVISED TO SHOW CHANGES
69	8-15-67	REVISED TO SHOW CHANGES
70	9-15-67	REVISED TO SHOW CHANGES
71	10-15-67	REVISED TO SHOW CHANGES
72	11-15-67	REVISED TO SHOW CHANGES
73	12-15-67	REVISED TO SHOW CHANGES
74	1-15-68	REVISED TO SHOW CHANGES
75	2-15-68	REVISED TO SHOW CHANGES
76	3-15-68	REVISED TO SHOW CHANGES
77	4-15-68	REVISED TO SHOW CHANGES
78	5-15-68	REVISED TO SHOW CHANGES
79	6-15-68	REVISED TO SHOW CHANGES
80	7-15-68	REVISED TO SHOW CHANGES
81	8-15-68	REVISED TO SHOW CHANGES
82	9-15-68	REVISED TO SHOW CHANGES
83	10-15-68	REVISED TO SHOW CHANGES
84	11-15-68	REVISED TO SHOW CHANGES
85	12-15-68	REVISED TO SHOW CHANGES
86	1-15-69	REVISED TO SHOW CHANGES
87	2-15-69	REVISED TO SHOW CHANGES
88	3-15-69	REVISED TO SHOW CHANGES
89	4-15-69	REVISED TO SHOW CHANGES
90	5-15-69	REVISED TO SHOW CHANGES
91	6-15-69	REVISED TO SHOW CHANGES
92	7-15-69	REVISED TO SHOW CHANGES
93	8-15-69	REVISED TO SHOW CHANGES
94	9-15-69	REVISED TO SHOW CHANGES
95	10-15-69	REVISED TO SHOW CHANGES
96	11-15-69	REVISED TO SHOW CHANGES
97	12-15-69	REVISED TO SHOW CHANGES
98	1-15-70	REVISED TO SHOW CHANGES
99	2-15-70	REVISED TO SHOW CHANGES
100	3-15-70	REVISED TO SHOW CHANGES

DIGITAL EQUIPMENT CORPORATION MAYNARD, MASSACHUSETTS PARTS LIST				QUANTITY/VARIATION													
MADE BY KEN GULICK		CHECKED D. HEALY		SECTION													
DATE 6/5/69		DATE 7/23/69		1													
ENG <i>Chalchalt</i>		PROD C. R. Thompson		ISSUED SECT.													
DATE 8-22-69		DATE 8/22/69		1													
ITEM NO.	DWG NO. / PART NO.	DESCRIPTION				7006320-1	7006320-2										
1	E-MD-7407395-0-0	PANEL MFG (TU56)				1	1										
2	D-IA-740958-0-0	PANEL OVERLAY				1	1										
3	900791	ADHESIVE STRENGTHENING SPRAY #77				A	PA/R										
4	9008133	NUA ASSY (L.H. TORQUE)				4	4										
5	9006341	SCR SOC HD CAP 10 24 X 1/2 BLK PASS.				8	16										
6	C-MD-7407282-2-0	COVER PLATE (L.H.)				1	2										
7	C-MD-7407283-2-0	TAPE GUIDE (L.H.)				1	2										
8	1209602	MOTOR, TORQUE				2	4										
9	D-IA-7006222-0-0	SWITCH CONTROL PANEL ASS'Y				1	2										
10	C-MD-7407283-1-0	TAPE GUIDE (R.H.)				1	2										
11	C-MD-7407282-1-0	COVER PLATE (R.H.)				1	2										
12	1209691	HEAD ASSY				1	2										
13	C-MD-7405136-0-0	REAR CHECK TAPE GUIDE				2	4										
14	B-MD-7405114-1-0	WEAR PLATE (R.H.)				1	2										
15	9007104	SPR #649-119N INST SPEC. CO.				2	4										
16	9006345	SCR SOC HD CAP #10-32 X 3/8 SST				2	4										
17	9008133	DOWEL PIN 3/32 DIA X 7/16 LG				4	8										
18	9008131	DOWEL PIN 1/8 DIA X 7/8 LG				4	8										
19	B-MD-7405114-2-0	WEAR PLATE (L.H.)				1	2										
20	9008130	DOWEL PIN 1/4 DIA X 1 1/4				2	2										
21	90-07785	GRIP, EXT SER #5555-37 WALDES 3/8" SHAFT				2	2										
22	B-MD-7407400-0-0	PIN, LOCK				2	2										
TITLE PANEL FRONT, ASSEMBLY				ASSY NO. E-AD-7006320-0-0		SIZE CODE A PL		NUMBER 7006320-0-0				REV. L		ECO NO. TU56-00076			
				SHEET 1 OF 2		DIST. C											

DEC FORM NO.
DRA 110

DIGITAL EQUIPMENT CORPORATION MAYNARD, MASSACHUSETTS PARTS LIST				QUANTITY/VARIATION													
MADE BY KEN GULICK		CHECKED D. HEALY		SECTION													
DATE 6/5/69		DATE 7/25/69		1													
ENG <i>Chalchalt</i>		PROD C. R. Thompson		ISSUED SECT.													
DATE 8-26-69		DATE 8/26/69		1													
ITEM NO.	DWG NO. / PART NO.	DESCRIPTION				7006320-1	7006320-2										
23	9006331	SCR SOC HD CAP 6-32 X 5/8 LG BLK PASS.				4	8										
24	C-MD-7405136-1-0	REAR CHECK TAPE GUIDE L.H.				1	2										
25	9006632	WASH INT TOOTH #4				2	4										
26	9007032	TIE WRAP #SST-2-B PANDUIT				A	PA/R										
27	9007651	WASH EXT TOOTH #10 HOLE				10	20										
28	9006022-1	SCR, PH HD PAN #6-32 X 3/8 SST				4	8										
29	9006014-1	SCR PH HD PAN #4-40 X 5/8 LG SST				2	4										
30	9008133	GRIP EXT SER #5555-37				4	8										
31	9008131	NUA ASSY (L.H. TORQUE)				4	8										
32	90-07772-9	CLAMP, CABLE BASE				1	2										
33	90-07772-10	CLAMP, CABLE TOP				1	2										
34	90-06037-2	SCREW, FLAT HEAD #8-32 x 3/8 LG SST				1	2										
35	C-IA-7408008-0-0	FILLER PLATE				1	2										
36	1209379	PIN, CONNECTOR				8	16										
37	1209350-09	HOUSING, CONNECTOR				1	2										
38	C-IA-7408010-0-0	GAUGE, HUB				A	PA/R										
39	C-MD-1209830	ARM, PANEL SUPPORT				2	2										
40	1209926	BUSHING, OIL IMPREGNATED BRONZE				4	8										
41	1209917	SPRING, COMPRESSION				2	4										
42	C-MD-7408287-0-0	GUARD PLATE				1	2										
43	90-06024-1	SCR, PH HD PAN #6-32 x 1/2 SST				2	4										
44	90-06793	SPACER 3/16AF X 3/16LG #6 HOLE AL				2	4										
TITLE PANEL FRONT ASSEMBLY				ASSY NO. E-AD-7006320-0-0		SIZE CODE A PL		NUMBER 7006320-0-0				REV. L		ECO NO. TU56-00064			
				SHEET 2 OF 2		DIST. G											

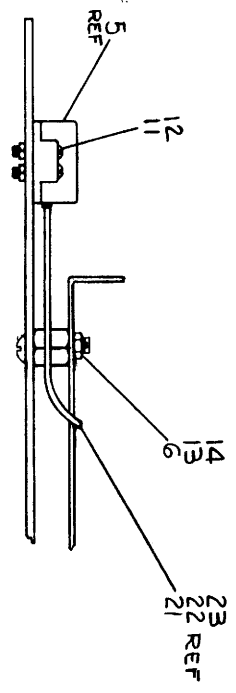
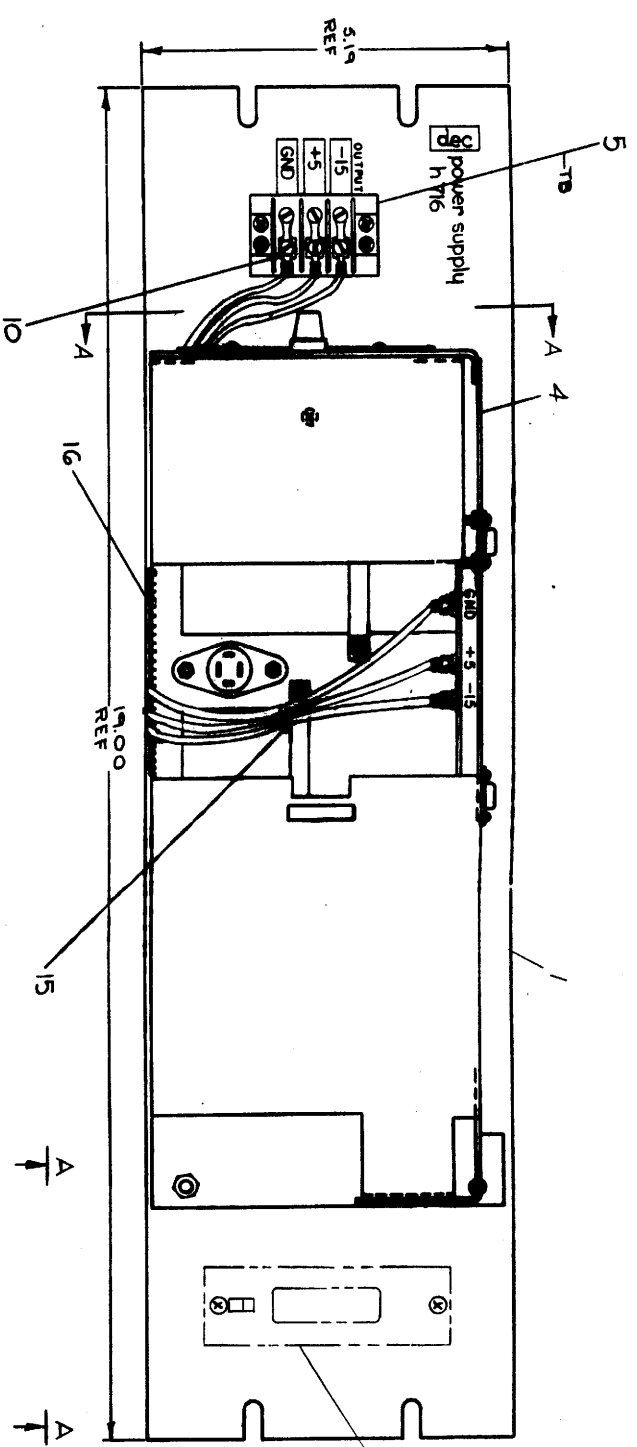
DEC FORM NO.
DRA 110

8
7
6
5
4
3
2
1

LEGEND

NUMBER	VARIATION
H716-φ	WANTLESS P.S WITH 110V RECEPTACLE
H716-A	H716 WITH 230V RECEPTACLE
H716-B	19" H716 (115V RECEPTACLE)
H716-C	H716-B WITH OUTPUT RELAY SWITCHED FROM +5V (115V)
H716-D	H716-B WITH 230V RECEPTACLE

NOTES:
1. FOR H716-A OR H716-D (230V) REMOVE EXISTING DECAL AND ADD NEW DECAL (ITEM # 25).



SEE VIEW A-A SHEET # 2.

PRINTED ON 24" X 36" / 600mm x 914mm
ADD 1

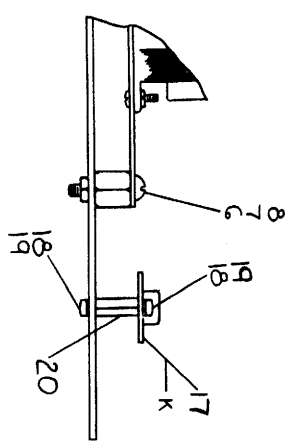
POWER SUPPLY H716	
EQUIPMENT CORPORATION	
PART NO.	REV.
H716-0-0	1

REV.	CHANGE NO.	REVISIONS

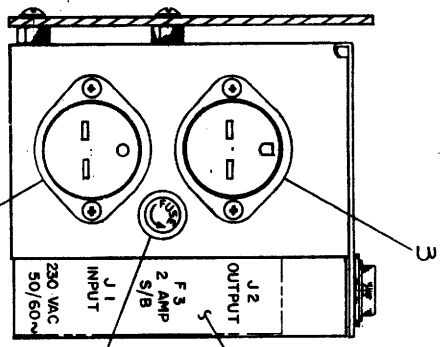
This drawing and specifications, herein, are the property of the manufacturer and shall not be reproduced or used in whole or in part as a basis for any other drawing or specification without the express written consent of the manufacturer.

WIRE TABLE HT16-B4D				
ITEM NO.	DESCRIPTION	FROM CONNECTION	WITH CONNECTION	TO CONNECTION
23	18	BLK	PS - GND	9
21	18	RED	PS - + 5	9
22	18	BLU	PS - -15	9
				TB - +5
				TB - -15

WIRE TABLE HT16-C				
ITEM NO.	DESCRIPTION	FROM CONNECTION	WITH CONNECTION	TO CONNECTION
23	18	BLK	PS - GND	26
21	18	RED	PS - + 5	26
22	18	BLU	PS - -15	26
				TB - + 5
				TB - -15



VIEW A-A
FOR HT16-C



SECTION A-A
SCALE: 1/1

REVISIONS		
REV.	CHANGE NO.	DESCRIPTION

FIRST USED ON OPTION/MODEL		DATE LIST	PART NO.	REV.
UNLESS OTHERWISE SPECIFIED DIMENSIONS IN INCHES.		DATE		
TOLERANCES		DATE		
DECIMALS	ANGLES	DATE		
.XX - .02	± 0° 30'	DATE		
.X - .1		DATE		
REMOVE BURRS AND BREAK SHARP CORNERS BEFORE ASSEMBLY		DATE		
MATERIAL		DATE		
NEXT HIGHER ASSY.		DATE		
FINISH		DATE		
SCALE 2 OF 2		DATE		
SHEET		DATE		

POWER SUPPLY
HT16

DIGITAL EQUIPMENT CORPORATION MAYNARD, MASSACHUSETTS				QUANTITY / VARIATION														
PARTS LIST				H716-Ø	H716-A	H716-B	H716-C	H716-D										
MADE BY G. FLANDERS		CHECKED <i>J.F. Lewis</i>		SECTION 1														
DATE 7-22-71		DATE 8-27-71		ISSUED SECT. 1														
ENG <i>P. Sargent</i>		PROD <i>Gene Strough</i>																
DATE 8/27/71		DATE 9/2/71																
ITEM NO.	DWG NO. / PART NO.	DESCRIPTION		H716-Ø	H716-A	H716-B	H716-C	H716-D										
1	D-IA-7408142-0-0	MOUNTING PANEL H716		-	-	1	-	-										
1	D-IA-7408142-1-0	MOUNTING PANEL H716		-	-	-	1	-										
1	D-IA-7408142-2-0	MOUNTING PANEL H716		-	-	-	-	1										
2	9007216	2 AMP S.B. FUSE		-	1	-	-	1										
3	9008470	FEMALE A.C. CONN		-	1	1	1	1										
4	3009282	H716 POWER SUPPLY		1	1	-	-	1										
5	9007631	TERM STRIP #3-541 JONES		-	-	1	1	1										
6	9006829	SPACER 1/2 AF X 3/8 LG #10 HOLE		-	-	3	3	3										
7	9006027-1	SCR PHL HD PAN 6-32 X 7/8 LG		-	-	2	2	2										
8	9006860	NUT KEPS #6-32		-	-	2	2	2										
9	9007917	CONN SLDS ARK. #50902		-	-	3	3	3										
10	9007929	CONN SLDS ARK. #50321		-	-	3	3	3										
11	9006041-1	SCR PHL HD 8-32 X 3/4 LG		-	-	4	4	4										
12	9006563	NUT KEPS 8-32		-	-	4	4	4										
13	9006076-1	SCR PH HD 10-32 X 7/8 LG		-	-	1	1	1										
14	9006565	NUT KEPS #10-32		-	-	1	1	1										
15	9007031	TIE WRAP #SST-1-B		-	-	A/RA	RA/R											
16	9007622	CATAPILLAR GROMMET		-	-	A/RA	RA/R											
17	C-IA-5408857-0-0	+15V POWER SEQUENCING BD		-	-	-	1	-										
18	9006022-1	SCR PHL HD 6-32 X 3/8 LG		-	-	-	4	-										
19	9006633	WASHER INT TOOTH #6		-	-	-	4	-										
20	9006857	SPACER 1/2 AF X 5/8 LG 6-32		-	-	-	2	-										
TITLE H716 POWER SUPPLY				ASSY NO. D-UA-H716-Ø-Ø		SIZE CODE A PL		NUMBER H716-Ø-Ø		REV.		ECO NO.						
				SHEET 1 OF 2		DIST. 6												

DEC FORM DEC 16 (325)-1031-N870
DRA 110

DIGITAL EQUIPMENT CORPORATION MAYNARD, MASSACHUSETTS				QUANTITY / VARIATION															
PARTS LIST				H716-Ø	H716-A	H716-B	H716-C	H716-D											
MADE BY G. FLANDERS		CHECKED <i>J.F. Lewis</i>		SECTION 1															
DATE 7-22-71		DATE 8-27-71		ISSUED SECT. 1															
ENG <i>P. Sargent</i>		PROD <i>Gene Strough</i>																	
DATE 8/27/71		DATE 9/2/71																	
ITEM NO.	DWG NO. / PART NO.	DESCRIPTION		H716-Ø	H716-A	H716-B	H716-C	H716-D											
21	9107360-22	18 AWG WIRE INSULATED RED		-	-	A/RA	RA/R												
22	9107360-66	18 AWG WIRE INSULATED BLU		-	-	A/RA	RA/R												
23	9107360-00	18 AWG WIRE INSULATED BLK		-	-	A/RA	RA/R												
24	9008854	MALE AC CONNECTOR INLET FLG'D		-	1	-	-	1											
25	A-DC-5309717-0-0	DECAL, POWER H716 (230V)		-	1	-	-	1											
26	9007919	CONN SLDS ARK 50906		-	-	-	2	-											
TITLE H716 POWER SUPPLY				ASSY NO. D-UA-H716-Ø-Ø		SIZE CODE A PL		NUMBER H716-Ø-Ø		REV.		ECO NO.							
				SHEET 2 OF 2		DIST.													

DEC FORM DEC 16 (325)-1031-N870
DRA 110

DIGITAL EQUIPMENT CORPORATION MAYNARD, MASSACHUSETTS PARTS LIST					QUANTITY / VARIATION															
MADE BY G. FLANDERS		CHECKED <i>J.F. Conroy</i>		SECTION	H716-Ø	H716-A	H716-B	H716-C	H716-D											
DATE 7-22-71	DATE 8-27-71	ISSUED SECT.																		
ENG <i>P. Sweeney</i>	PROD <i>Gene Stinger</i>	ISSUED SECT.																		
DATE 8/27/71	DATE 9/2/71	ISSUED SECT.																		
ITEM NO.	DWG NO. / PART NO.	DESCRIPTION			H716-Ø	H716-A	H716-B	H716-C	H716-D											
1	D-IA-7408142-0-0	MOUNTING PANFL H716			-	-	1	-	-											
2	D-IA-7408142-1-0	MOUNTING PANEL H716			-	-	-	1	-											
1	D-IA-7408142-2-0	MOUNTING PANEL H716			-	-	-	-	1											
2	9007216	2 AMP S.B. FUSE			-	1	-	-	1											
3	9008470	FEMALE A.C. CONN			-	1	1	1	1											
4	3009282	H716 POWER SUPPLY			1	1	-	-	1											
5	9007631	TERM STRIP #3-541 JONES			-	-	1	1	1											
6	9006829	SPACER ½ AF X 3/8 LG #10 HOLE			-	-	3	3	3											
7	9006027-1	SCR PHL HD PAN 6-32 X 7/8 LG			-	-	2	2	2											
8	9006860	NUT KEPS #6-32			-	-	2	2	2											
9	9007917	CONN SLDS ARK. #50902			-	-	3	3	3											
10	9007929	CONN SLDS ARK. #50321			-	-	3	3	3											
11	9006041-1	SCR PHL HD 8-32 X 3/4 LG			-	-	4	4	4											
12	9006563	NUT KEPS 8-32			-	-	4	4	4											
13	9006076-1	SCR PH HD 10-32 X 7/8 LG			-	-	1	1	1											
14	9006565	NUT KEPS #10-32			-	-	1	1	1											
15	9007031	TIE WRAP #SST-1-B			-	-	A/RA/RA/R	A/RA/RA/R	A/RA/RA/R											
16	9007622	CATAPILLAR GROMMET			-	-	A/RA/RA/R	A/RA/RA/R	A/RA/RA/R											
17	C-IA-5408857-0-0	+15V POWER SEQUENCING BD			-	-	-	1	-											
18	9006022-1	SCR PHL HD 6-32 X 3/8 LG			-	-	-	4	-											
19	9006633	WASHER INT TOOTH #6			-	-	-	4	-											
20	9006857	SPACER ¼ AF X 5/8 LG 6-32			-	-	-	2	-											
TITLE H716 POWER SUPPLY				ASSY NO. D-UA-H716-Ø-Ø		SIZE CODE A PL		NUMBER H716-Ø-Ø				REV.		ECO NO.						
SHEET 1 OF 2				DIST. 6																

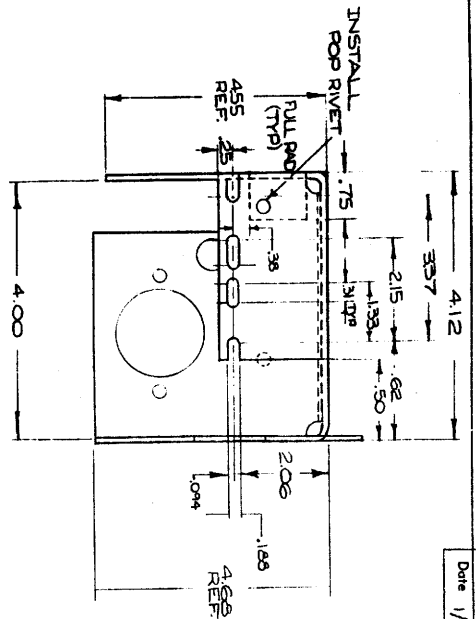
DEC FORM DEC 16 (325)-1031-N870
DRA 110

DIGITAL EQUIPMENT CORPORATION MAYNARD, MASSACHUSETTS PARTS LIST					QUANTITY / VARIATION																
MADE BY G. FLANDERS		CHECKED <i>J.F. Conroy</i>		SECTION	H716-Ø	H716-A	H716-B	H716-C	H716-D												
DATE 7-22-71	DATE 8-27-71	ISSUED SECT.																			
ENG <i>P. Sweeney</i>	PROD <i>Gene Stinger</i>	ISSUED SECT.																			
DATE 8/27/71	DATE 9/2/71	ISSUED SECT.																			
ITEM NO.	DWG NO. / PART NO.	DESCRIPTION			H716-Ø	H716-A	H716-B	H716-C	H716-D												
21	9107360-22	18 AWG WIRE INSULATED RED			-	-	A/RA/RA/R	A/RA/RA/R	A/RA/RA/R												
22	9107360-66	18 AWG WIRE INSULATED BLU			-	-	A/RA/RA/R	A/RA/RA/R	A/RA/RA/R												
23	9107360-00	18 AWG WIRE INSULATED BLK			-	-	A/RA/RA/R	A/RA/RA/R	A/RA/RA/R												
24	9008854	MALE AC CONNECTOR INLET FLG'D			-	1	-	-	1												
25	A-DC-5309717-0-0	DECAL, POWER H716 (230V)			-	1	-	-	1												
26	9007919	CONN SLDS ARK 50906			-	-	-	2	-												
TITLE H716 POWER SUPPLY				ASSY NO. D-UA-H716-Ø-Ø		SIZE CODE A PL		NUMBER H716-Ø-Ø				REV.		ECO NO.							
SHEET 2 OF 2				DIST.																	

DEC FORM DEC 16 (325)-1031-N870
DRA 110

digital EQUIPMENT CORPORATION **PURCHASE SPECIFICATION**

Number 30-09282 Rev c
Date 1/5/69

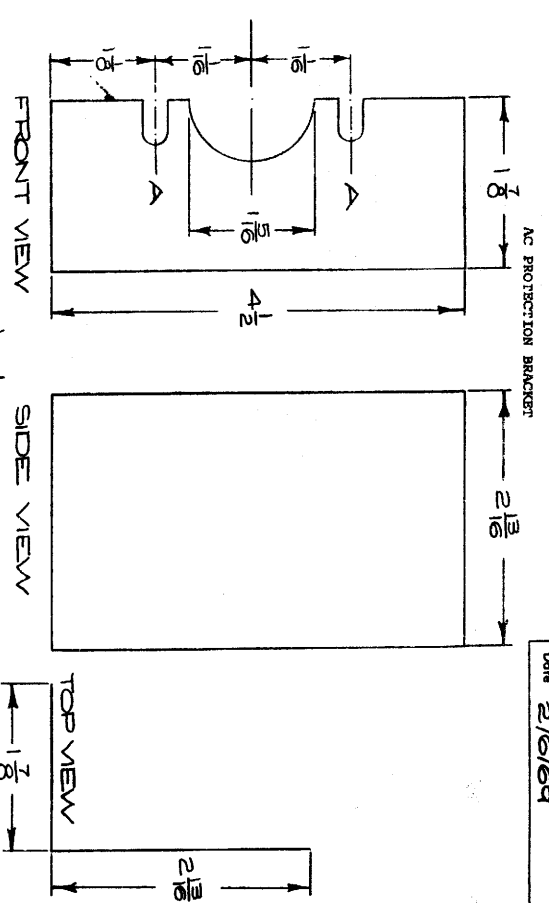


D.E.C. PART NO. 30-09282

Sheet 5 of 7 Scale 4-
Number 30-09282 Rev c

digital EQUIPMENT CORPORATION **PURCHASE SPECIFICATION**

Number 30-09282 Rev c
Date 2/6/69



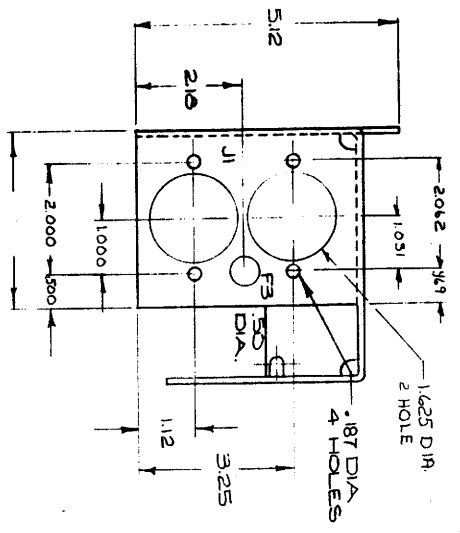
A = 1/4 x 1/2 SLOT
MTL = 1/16 ALUM.

D.E.C. PART NO. 30-09282

Sheet 7 of 7 Scale FULL
Number 30-09282 Rev c

digital EQUIPMENT CORPORATION **PURCHASE SPECIFICATION**

Number 30-09282 Rev c
Date 1/8/69



D.E.C. PART NO. 30-09282

Sheet 6 of 7 Scale 4-
Number 30-09282 Rev c

This drawing and specifications, herein, are the property of Digital Equipment Corporation and shall not be reproduced or copied or used in whole or in part as the basis for the manufacture or sale of items without written permission.

DIGITAL EQUIPMENT CORPORATION
MAYNARD, MASSACHUSETTS

DATE 2/18/71

TITLE Modification Procedure for H716

REVISIONS						
REV	DESCRIPTION	CHG NO	ORIG	DATE	APPD BY	DATE

ENGINEER <i>David Spill</i>	APPRD <i>Frank Taylor</i>	SIZE A	CODE SP	NUMBER H716-0-1	REV
-----------------------------	---------------------------	--------	---------	-----------------	-----

DEC FORM NO. DRA 107A SHEET 1 OF 2

ENGINEERING SPECIFICATION

CONTINUATION SHEET

TITLE Modification Procedure for H716

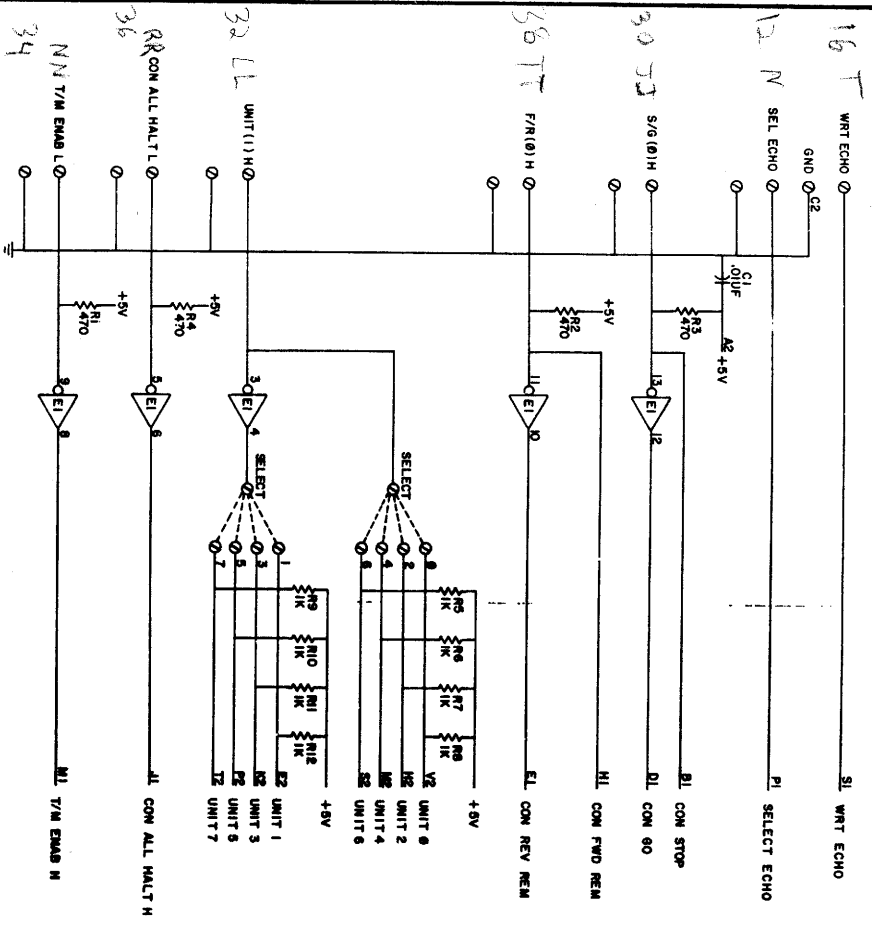
Incorporate the following modifications to change an H716 power supply to an H716-A or an H716-D power supply.

- 1) Replace the male AC power connector with DEC Part #90-8834
- 2) Replace the female AC power connector with DEC Part #90-8470
- 3) Replace the 3 amp S/B AC input fuse with DEC Part #90-7216
- 4) Replace existing decal with new decal DEC Part # 5309717
- 5) Change the following jumpers on the transformer:

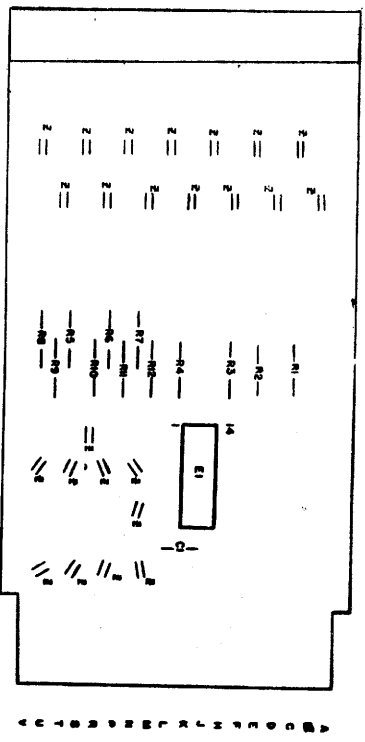
Delete	From	To
	Terminal 1	Terminal 3
	Terminal 2	Terminal 4
Add 18 AWG	Terminal 2	Terminal 3

ENGINEER	APPRD	SIZE A	CODE SP	NUMBER H716-0-1	REV
----------	-------	--------	---------	-----------------	-----

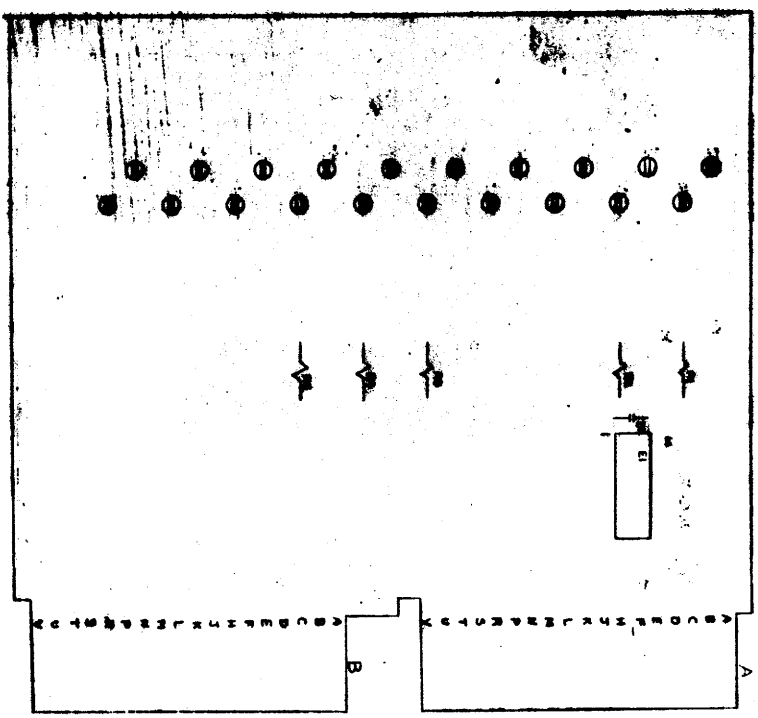
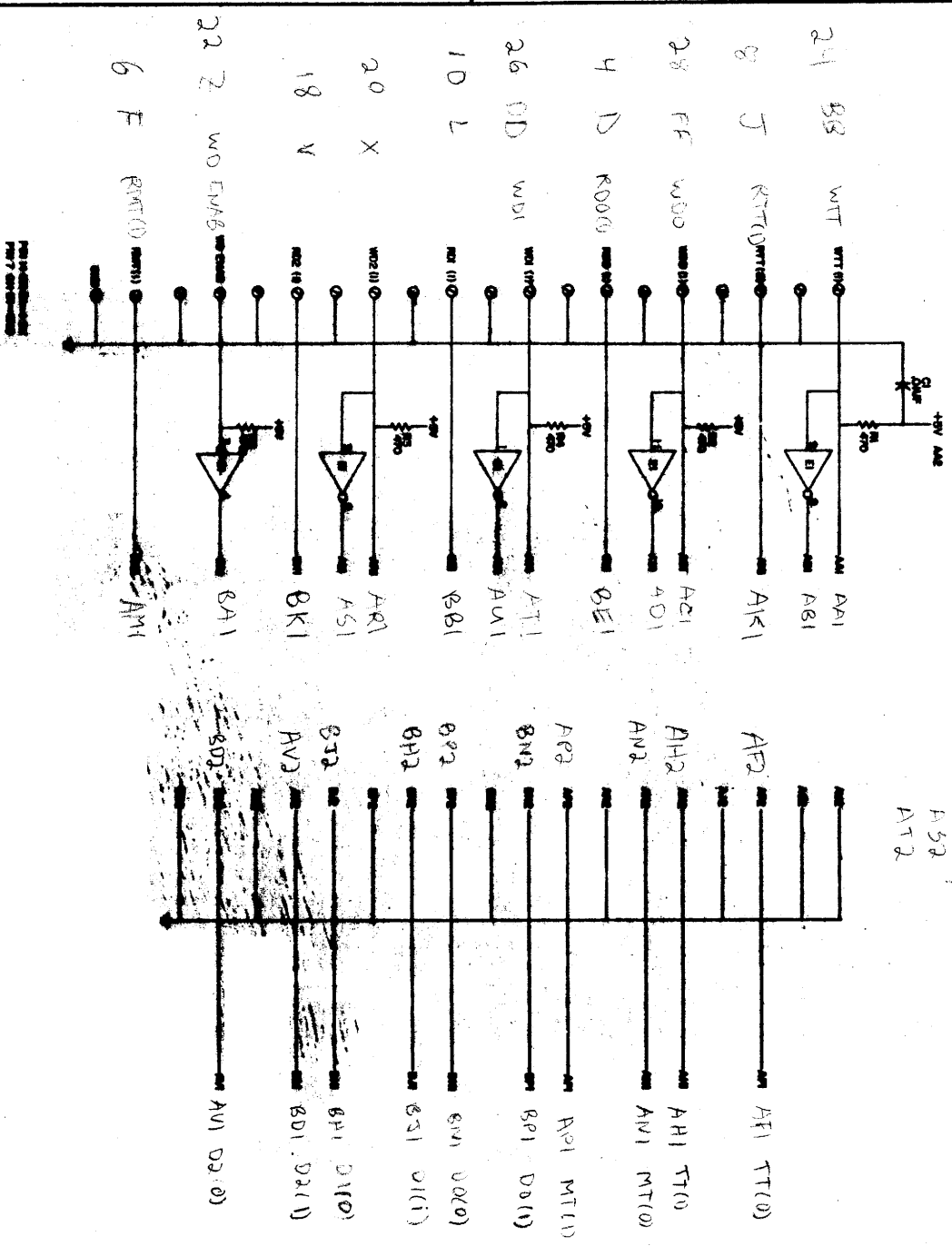
DEC FORM NO. DRA 108 SHEET 2 OF 2



○-----○ INDICATES OPTIONAL JUMPERS



NO.	DESCRIPTION	QTY.	REF. DESIG.	MANUFACTURER	DATE
1	CONNECTOR	1	5066271	5066271	10
2	WIRE	1	5066275	5066275	9
3	WIRE	1	5066275	5066275	8
4	WIRE	1	5066275	5066275	7
5	WIRE	1	5066275	5066275	6
6	WIRE	1	5066275	5066275	5
7	WIRE	1	5066275	5066275	4
8	WIRE	1	5066275	5066275	3
9	WIRE	1	5066275	5066275	2
10	WIRE	1	5066275	5066275	1



Pin	Signal	Panel	Notes
1
2
3
4
5
6
7
8
9
10
11
12
13
14
15
16
17
18
19
20
21
22
23
24
25
26
27
28
29
30

DATE: 10/15/54
 DRAWN: [Name]
 CHECKED: [Name]
 APPROVED: [Name]
 PART: 100-100000-1
 TITLE: DATA CABLE CONNECTOR

DIGITAL EQUIPMENT CORPORATION MAYNARD, MASSACHUSETTS				LEGEND		QUANTITY / VARIATION												
ACCESSORY LIST				D	DOCUMENT													
MADE BY J. McCluskey		CHECKED <i>J. McCluskey</i>		SECTION		PA	PAPER TAPE ASCII					KIT CHECK	BY	DATE	INSTALLATION CHECK	BY	DATE	
DATE 4/7/72	DATE 4/7/72	ISSUED SECT.		PB	PAPER TAPE BINARY													
ENG <i>J. McCluskey</i>		PROD <i>J. McCluskey</i>		ISSUED SECT.		PM	PAPER TAPE READ-IN-MODE											
DATE 4/7/72	DATE 4/7/72																	
ITEM NO.	DWG NO. / PART NO.	DESCRIPTION				TD8-E	TD8-E-H	TD8-E-J	TD8-E-M	TD8-E-R								
1	M868	Simple DecTape Control				1	1	1	1	1								
2	70-08447	DecTape Control Cable				1	1	1	1	1								
3	TU56-MH	Single Tape Transport				0	1	0	0	0								
4	TU56-MJ	Single Tape Transport (Table Top)				0	0	1	0	0								
5	TU56-M	Dual Tape Transport				0	0	0	1	0								
6	TU56-MR	Dual Tape Transport (Table Top)				0	0	0	0	1								
7	A-ML-TU56	TU56 Print Set				0	1	1	1	1								
8	TU56	TU56 Maintenance Manual				0	1	1	1	1								
9	Dec-8E-EUZA-DAND-PB	TD8E Dectape Formatter (Document & Papertape)				1	1	1	1	1								
10	Dec-8E-D3A-DAND-PB	TD8-E Diagnostic				1	1	1	1	1								
11	Dec-8E-UZTA-DAND-PB	Read/Write Subroutine				1	1	1	1	1								
12	A-ML-TD8-E	TD8-E Print Set				1	1	1	1	1								
13	Dec-8-E-HR3B-D-TD8-E	TD8-E Maintenance Manual				1	1	1	1	1								
		Note 1 - When shipping a TD8-E-U also ship 1 certified Dectape and 1 empty reel also 1 cleaning kit, mounting plate and hardware. On note 1 & 2 refer to TU56 accessory list for part NO.																
		Note 2 - When shipping a TD8-E-JER also ship a certified Dectape and 2 empty reels. Also 1 cleaning kit, mounting plate and hardware.																

TITLE SIMPLE DECTAPE CONTROL		ASSY. NO.	SIZE CODE A AL	NUMBER TD8-E-8	REV.	ECO NO
SHEET 1 OF 2			DIST.			

DEC 16-(325)-1075-N172 DRA 121

DIGITAL EQUIPMENT CORPORATION MAYNARD, MASSACHUSETTS				LEGEND		QUANTITY / VARIATION												
ACCESSORY LIST				D	DOCUMENT													
MADE BY J. McCluskey		CHECKED <i>J. McCluskey</i>		SECTION		PA	PAPER TAPE ASCII					KIT CHECK	BY	DATE	INSTALLATION CHECK	BY	DATE	
DATE 4/7/72	DATE 4/7/72	ISSUED SECT.		PB	PAPER TAPE BINARY													
ENG <i>J. McCluskey</i>		PROD <i>J. McCluskey</i>		ISSUED SECT.		PM	PAPER TAPE READ-IN-MODE											
DATE 4/7/72	DATE 4/7/72																	
ITEM NO.	DWG NO. / PART NO.	DESCRIPTION																
		Note 3 - If system is 110 use 1 H716-B Power supply																
		If system is 220 use 1 H716-D Power supply																

TITLE SIMPLE DECTAPE CONTROL		ASSY. NO.	SIZE CODE A AL	NUMBER TD8-E-8	REV.	ECO NO
SHEET 2 OF 2			DIST.			

DEC 16-(325)-1075-N172 DRA 121

DIGITAL EQUIPMENT CORPORATION WORLD-WIDE SALES AND SERVICE

146 Main Street, Maynard, Massachusetts U.S.A. 01754
 Telephone: From Metropolitan Area 646-6900 • Elsewhere: (617) 897-5111
 TWX: 710-549-0212 Cable: DIGITAL MAYN Telefax: 94-9467

UNITED STATES

NORTHEAST

REGIONAL OFFICE
 225 Village Street, Waltham, Massachusetts 02154
 Telephone: (617) 890-0330/0330 TWX: 710-324-6919

WALTHAM
 15 Little Street, Waltham, Massachusetts 02154
 Telephone: (617) 891-1000 TWX: 710-324-6919

CAMBRIDGE/BOSTON
 899 Main Street, Cambridge, Massachusetts 02139
 Telephone: (617) 491-6130 TWX: 710-320-1167

ROCHESTER
 130 Albee Creek Road, Rochester, New York 14618
 Telephone: (716) 481-1700 TWX: 710-253-3078

CONNECTICUT
 240 Percival Ave., Middletown, Conn. 06450
 Telephone: (203) 237-1441/7465 TWX: 710-461-0054

MID-ATLANTIC -- SOUTHEAST
REGIONAL OFFICE:
 U.S. Route 1, Princeton, New Jersey 08540
 Telephone: (609) 482-2390 TWX: 510-685-2338

NEW YORK
 95 Cedar Lane, Englewood, New Jersey 07631
 Telephone: (201) 971-4994, (212) 594-6935, (212) 736-0417
 TWX: 710-891-9121

NEW JERSEY
 1238 Route 46, Parsippany, New Jersey 07054
 Telephone: (201) 353-3530 TWX: 710-987-5319

PRINCETON
 U.S. Route 1
 Princeton, New Jersey 08540 TWX: 510-685-2338

LONG ISLAND
 1 Huntington Quadrangle
 Suite 1307, Huntington Station, New York 11746
 Telephone: (516) 854-4101, (512) 985-9935

PHILADELPHIA
 Station Square Three, Paoli, Pennsylvania 19301
 Telephone: (215) 947-4960/4410 Telefax: 510-688-8335

WASHINGTON
 Executive Building
 8811 Kenilworth Ave., Riverdale, Maryland 20884
 Telephone: (301) 728-1600/752-8797 TWX: 710-926-9682

DURHAM/CHARLE HILL
 2704 Chapel Hill, Durham, North Carolina 27707
 Telephone: (919) 469-3347 TWX: 510-927-0912

ORLANDO
 Suite 100, 1000 Lake Eleanor Drive, Orlando, Florida 32809
 Telephone: (305) 851-4450 TWX: 810-890-0180

ALBANY
 2815 Clearview Place, Suite 100,
 Albany, Georgia 31706
 Telephone: (404) 451-3734/3756/3736 TWX: 810-457-4223

INTERNATIONAL

EUROPEAN HEADQUARTERS

Digital Equipment Corporation International Europe
 81, Route de l'Alpe
 1211 Geneva 26, Switzerland
 Telephone: 42 79 50 Telefax: 22 693

SWEDEN
 Digital Equipment Aktiebolag
STOCKHOLM
 Vitegraven 2, S-171 54 Solna, Sweden
 Telephone: 96 13 90 Telefax: 170 50
 Cable: Digital Stockholm

NEW ZEALAND
 Digital Equipment Corporation Ltd.
AUCKLAND
 Hilton House, 400 Queen Street, Box 2471 A,
 Auckland, New Zealand
 Telephone: 75-533

FRANCE
 Digital S.A.R.L.
PARIS
 327 Rue de Charonne, 75 Paris 12^e arr.
 Telephone: 344 76 07 Telefax: 21339

GRENOBLE
 10 rue Auguste Ravier, F-38 Grenoble, France
 Telephone: (76) 87 87 32 Telefax: 32 882 F (Code 212)

WEST
REGIONAL OFFICE
 3100 Ridgeway Drive, Suite 108
 Metairie, Louisiana 70002
 Telephone: 504-837-0257

NEW ORLEANS
 3100 Ridgeway Drive, Suite 108
 Metairie, Louisiana 70002
 Telephone: 504-837-0257

ANN ARBOR
 230 Huron View Boulevard, Ann Arbor, Michigan 48103
 Telephone: (313) 761-1150 TWX: 810-223-6653

INDIANAPOLIS
 21 Beahmway Drive -- Suite G
 Indianapolis, Indiana 46224
 Telephone: (317) 242-8341 TWX: 810-341-3435

MINNEAPOLIS
 Suite 111, 8030 Minnesota Avenue South,
 Minneapolis, Minnesota 55420
 Telephone: (612) 854-6663-3-4-5 TWX: 910-576-2818

CLEVELAND
 Park Hill Bldg., 35104 Euclid Ave.
 Willoughby, Ohio 44064
 Telephone: (216) 546-8484 TWX: 810-447-2609

ST. LOUIS
 Suite 110, 115 Progress Pky., Maryland Heights,
 Missouri 63043
 Telephone: (314) 878-4310 TWX: 910-764-0031

DAYTON
 3101 Kettering Blvd., Dayton, Ohio 45329
 Telephone: (513) 298-7277 TWX: 810-459-1676

MILWAUKEE
 6531 W. Capitol Drive, Milwaukee, Wisconsin 53222
 Telephone: (414) 453-9110 TWX: 910-282-1199

DALLAS
 8855 North Stemmons Freeway
 Dallas, Texas 75247
 Telephone: (214) 638-4880 TWX: 910-981-4000

HOUSTON
 3417 Millam Street, Suite A, Houston, Texas 77002
 Telephone: (713) 524-2961 TWX: 910-881-1651

SEATTLE
 1521 130th N.E., Bellevue, Washington 98005
 Telephone: (206) 454-0250/455-5404 TWX: 910-443-2306

SALT LAKE CITY
 437 South 3rd East, Salt Lake City, Utah 84111
 Telephone: (801) 335-9839 TWX: 910-925-3504

PHOENIX
 4389 East Broadway Road
 Phoenix, Arizona 85040
 Telephone: (602) 286-3488 TWX: 910-950-4891

PORTLAND
 Suite 168
 5319 S.W. Canyon Court, Portland, Ore. 97221
 Telephone: (503) 297-5767/3765

BERLIN
 Digital Equipment Corporation Ltd.
AUCKLAND
 Hilton House, 400 Queen Street, Box 2471 A,
 Auckland, New Zealand
 Telephone: 75-533

FRANCE
 Digital S.A.R.L.
PARIS
 327 Rue de Charonne, 75 Paris 12^e arr.
 Telephone: 344 76 07 Telefax: 21339

GRENOBLE
 10 rue Auguste Ravier, F-38 Grenoble, France
 Telephone: (76) 87 87 32 Telefax: 32 882 F (Code 212)

WEST
REGIONAL OFFICE
 3100 Ridgeway Drive, Suite 108
 Metairie, Louisiana 70002
 Telephone: 504-837-0257

NEW ORLEANS
 3100 Ridgeway Drive, Suite 108
 Metairie, Louisiana 70002
 Telephone: 504-837-0257

ANN ARBOR
 230 Huron View Boulevard, Ann Arbor, Michigan 48103
 Telephone: (313) 761-1150 TWX: 810-223-6653

INDIANAPOLIS
 21 Beahmway Drive -- Suite G
 Indianapolis, Indiana 46224
 Telephone: (317) 242-8341 TWX: 810-341-3435

MINNEAPOLIS
 Suite 111, 8030 Minnesota Avenue South,
 Minneapolis, Minnesota 55420
 Telephone: (612) 854-6663-3-4-5 TWX: 910-576-2818

CLEVELAND
 Park Hill Bldg., 35104 Euclid Ave.
 Willoughby, Ohio 44064
 Telephone: (216) 546-8484 TWX: 810-447-2609

ST. LOUIS
 Suite 110, 115 Progress Pky., Maryland Heights,
 Missouri 63043
 Telephone: (314) 878-4310 TWX: 910-764-0031

DAYTON
 3101 Kettering Blvd., Dayton, Ohio 45329
 Telephone: (513) 298-7277 TWX: 810-459-1676

MILWAUKEE
 6531 W. Capitol Drive, Milwaukee, Wisconsin 53222
 Telephone: (414) 453-9110 TWX: 910-282-1199

DALLAS
 8855 North Stemmons Freeway
 Dallas, Texas 75247
 Telephone: (214) 638-4880 TWX: 910-981-4000

HOUSTON
 3417 Millam Street, Suite A, Houston, Texas 77002
 Telephone: (713) 524-2961 TWX: 910-881-1651

SEATTLE
 1521 130th N.E., Bellevue, Washington 98005
 Telephone: (206) 454-0250/455-5404 TWX: 910-443-2306

INTERNATIONAL (cont.)

FRANCE
 Digital S.A.R.L.
PARIS
 327 Rue de Charonne, 75 Paris 12^e arr.
 Telephone: 344 76 07 Telefax: 21339

GRENOBLE
 10 rue Auguste Ravier, F-38 Grenoble, France
 Telephone: (76) 87 87 32 Telefax: 32 882 F (Code 212)

WEST
REGIONAL OFFICE
 3100 Ridgeway Drive, Suite 108
 Metairie, Louisiana 70002
 Telephone: 504-837-0257

NEW ORLEANS
 3100 Ridgeway Drive, Suite 108
 Metairie, Louisiana 70002
 Telephone: 504-837-0257

ANN ARBOR
 230 Huron View Boulevard, Ann Arbor, Michigan 48103
 Telephone: (313) 761-1150 TWX: 810-223-6653

INDIANAPOLIS
 21 Beahmway Drive -- Suite G
 Indianapolis, Indiana 46224
 Telephone: (317) 242-8341 TWX: 810-341-3435

MINNEAPOLIS
 Suite 111, 8030 Minnesota Avenue South,
 Minneapolis, Minnesota 55420
 Telephone: (612) 854-6663-3-4-5 TWX: 910-576-2818

CLEVELAND
 Park Hill Bldg., 35104 Euclid Ave.
 Willoughby, Ohio 44064
 Telephone: (216) 546-8484 TWX: 810-447-2609

ST. LOUIS
 Suite 110, 115 Progress Pky., Maryland Heights,
 Missouri 63043
 Telephone: (314) 878-4310 TWX: 910-764-0031

DAYTON
 3101 Kettering Blvd., Dayton, Ohio 45329
 Telephone: (513) 298-7277 TWX: 810-459-1676

MILWAUKEE
 6531 W. Capitol Drive, Milwaukee, Wisconsin 53222
 Telephone: (414) 453-9110 TWX: 910-282-1199

DALLAS
 8855 North Stemmons Freeway
 Dallas, Texas 75247
 Telephone: (214) 638-4880 TWX: 910-981-4000

HOUSTON
 3417 Millam Street, Suite A, Houston, Texas 77002
 Telephone: (713) 524-2961 TWX: 910-881-1651

SEATTLE
 1521 130th N.E., Bellevue, Washington 98005
 Telephone: (206) 454-0250/455-5404 TWX: 910-443-2306

SALT LAKE CITY
 437 South 3rd East, Salt Lake City, Utah 84111
 Telephone: (801) 335-9839 TWX: 910-925-3504

PHOENIX
 4389 East Broadway Road
 Phoenix, Arizona 85040
 Telephone: (602) 286-3488 TWX: 910-950-4891

PORTLAND
 Suite 168
 5319 S.W. Canyon Court, Portland, Ore. 97221
 Telephone: (503) 297-5767/3765

BERLIN
 Digital Equipment Corporation Ltd.
AUCKLAND
 Hilton House, 400 Queen Street, Box 2471 A,
 Auckland, New Zealand
 Telephone: 75-533

FRANCE
 Digital S.A.R.L.
PARIS
 327 Rue de Charonne, 75 Paris 12^e arr.
 Telephone: 344 76 07 Telefax: 21339

GRENOBLE
 10 rue Auguste Ravier, F-38 Grenoble, France
 Telephone: (76) 87 87 32 Telefax: 32 882 F (Code 212)

WEST
REGIONAL OFFICE
 3100 Ridgeway Drive, Suite 108
 Metairie, Louisiana 70002
 Telephone: 504-837-0257

NEW ORLEANS
 3100 Ridgeway Drive, Suite 108
 Metairie, Louisiana 70002
 Telephone: 504-837-0257

ANN ARBOR
 230 Huron View Boulevard, Ann Arbor, Michigan 48103
 Telephone: (313) 761-1150 TWX: 810-223-6653

INDIANAPOLIS
 21 Beahmway Drive -- Suite G
 Indianapolis, Indiana 46224
 Telephone: (317) 242-8341 TWX: 810-341-3435

MINNEAPOLIS
 Suite 111, 8030 Minnesota Avenue South,
 Minneapolis, Minnesota 55420
 Telephone: (612) 854-6663-3-4-5 TWX: 910-576-2818

CLEVELAND
 Park Hill Bldg., 35104 Euclid Ave.
 Willoughby, Ohio 44064
 Telephone: (216) 546-8484 TWX: 810-447-2609

ST. LOUIS
 Suite 110, 115 Progress Pky., Maryland Heights,
 Missouri 63043
 Telephone: (314) 878-4310 TWX: 910-764-0031

DAYTON
 3101 Kettering Blvd., Dayton, Ohio 45329
 Telephone: (513) 298-7277 TWX: 810-459-1676

MILWAUKEE
 6531 W. Capitol Drive, Milwaukee, Wisconsin 53222
 Telephone: (414) 453-9110 TWX: 910-282-1199

DALLAS
 8855 North Stemmons Freeway
 Dallas, Texas 75247
 Telephone: (214) 638-4880 TWX: 910-981-4000

HOUSTON
 3417 Millam Street, Suite A, Houston, Texas 77002
 Telephone: (713) 524-2961 TWX: 910-881-1651

SEATTLE
 1521 130th N.E., Bellevue, Washington 98005
 Telephone: (206) 454-0250/455-5404 TWX: 910-443-2306

SALT LAKE CITY
 437 South 3rd East, Salt Lake City, Utah 84111
 Telephone: (801) 335-9839 TWX: 910-925-3504

PHOENIX
 4389 East Broadway Road
 Phoenix, Arizona 85040
 Telephone: (602) 286-3488 TWX: 910-950-4891

PORTLAND
 Suite 168
 5319 S.W. Canyon Court, Portland, Ore. 97221
 Telephone: (503) 297-5767/3765

BERLIN
 Digital Equipment Corporation Ltd.
AUCKLAND
 Hilton House, 400 Queen Street, Box 2471 A,
 Auckland, New Zealand
 Telephone: 75-533

FRANCE
 Digital S.A.R.L.
PARIS
 327 Rue de Charonne, 75 Paris 12^e arr.
 Telephone: 344 76 07 Telefax: 21339

GRENOBLE
 10 rue Auguste Ravier, F-38 Grenoble, France
 Telephone: (76) 87 87 32 Telefax: 32 882 F (Code 212)

WEST
REGIONAL OFFICE
 3100 Ridgeway Drive, Suite 108
 Metairie, Louisiana 70002
 Telephone: 504-837-0257

NEW ORLEANS
 3100 Ridgeway Drive, Suite 108
 Metairie, Louisiana 70002
 Telephone: 504-837-0257

ANN ARBOR
 230 Huron View Boulevard, Ann Arbor, Michigan 48103
 Telephone: (313) 761-1150 TWX: 810-223-6653

INDIANAPOLIS
 21 Beahmway Drive -- Suite G
 Indianapolis, Indiana 46224
 Telephone: (317) 242-8341 TWX: 810-341-3435

MINNEAPOLIS
 Suite 111, 8030 Minnesota Avenue South,
 Minneapolis, Minnesota 55420
 Telephone: (612) 854-6663-3-4-5 TWX: 910-576-2818

CLEVELAND
 Park Hill Bldg., 35104 Euclid Ave.
 Willoughby, Ohio 44064
 Telephone: (216) 546-8484 TWX: 810-447-2609

ST. LOUIS
 Suite 110, 115 Progress Pky., Maryland Heights,
 Missouri 63043
 Telephone: (314) 878-4310 TWX: 910-764-0031

DAYTON
 3101 Kettering Blvd., Dayton, Ohio 45329
 Telephone: (513) 298-7277 TWX: 810-459-1676

MILWAUKEE
 6531 W. Capitol Drive, Milwaukee, Wisconsin 53222
 Telephone: (414) 453-9110 TWX: 910-282-1199

DALLAS
 8855 North Stemmons Freeway
 Dallas, Texas 75247
 Telephone: (214) 638-4880 TWX: 910-981-4000

HOUSTON
 3417 Millam Street, Suite A, Houston, Texas 77002
 Telephone: (713) 524-2961 TWX: 910-881-1651

SEATTLE
 1521 130th N.E., Bellevue, Washington 98005
 Telephone: (206) 454-0250/455-5404 TWX: 910-443-2306

SALT LAKE CITY
 437 South 3rd East, Salt Lake City, Utah 84111
 Telephone: (801) 335-9839 TWX: 910-925-3504

PHOENIX
 4389 East Broadway Road
 Phoenix, Arizona 85040
 Telephone: (602) 286-3488 TWX: 910-950-4891

PORTLAND
 Suite 168
 5319 S.W. Canyon Court, Portland, Ore. 97221
 Telephone: (503) 297-5767/3765

BERLIN
 Digital Equipment Corporation Ltd.
AUCKLAND
 Hilton House, 400 Queen Street, Box 2471 A,
 Auckland, New Zealand
 Telephone: 75-533

FRANCE
 Digital S.A.R.L.
PARIS
 327 Rue de Charonne, 75 Paris 12^e arr.
 Telephone: 344 76 07 Telefax: 21339

GRENOBLE
 10 rue Auguste Ravier, F-38 Grenoble, France
 Telephone: (76) 87 87 32 Telefax: 32 882 F (Code 212)

WEST
REGIONAL OFFICE
 3100 Ridgeway Drive, Suite 108
 Metairie, Louisiana 70002
 Telephone: 504-837-0257

INTERNATIONAL (cont.)

NORWAY
 Digital Equipment
OSLO
 Waldemarskransegate 84 B-86
 Oslo 1, Norway
 Telephone: 37 19 85, 37 02 30 Telefax: 106 43

DENMARK
 Digital Equipment Corporation
COPENHAGEN
 Vestertorveg 140, 1820 Copenhagen V
 Telephone: 514 636-0393 TWX: 810-422-4124

SWITZERLAND
 Digital Equipment Corporation S.A.
GENEVA
 61, Route de l'Alpe
 1211 Geneva 26, Switzerland
 Telephone: 42 79 50 Telefax: 22 693