

RX8  
FLOPPY  
CONTROLLER

JOHN FOWLER

8A

**digital**

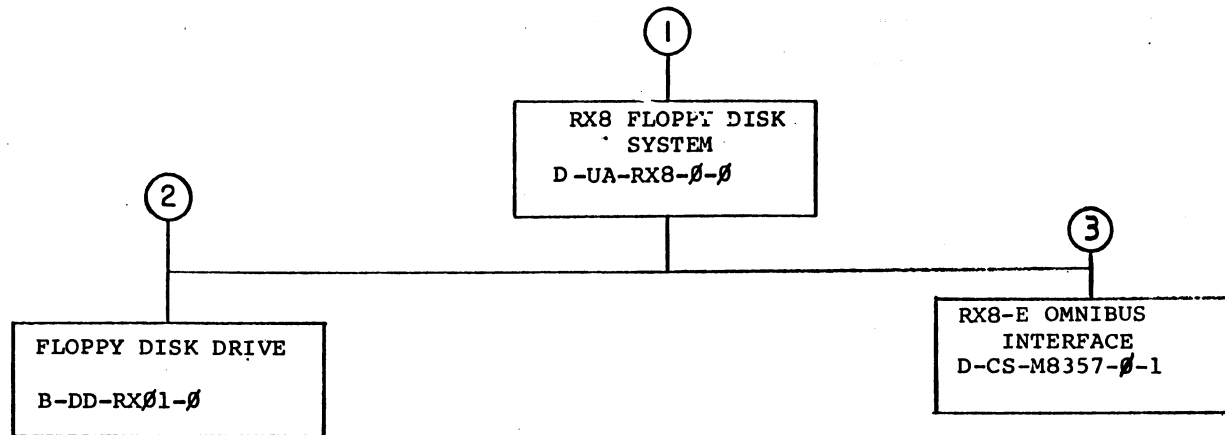
**R X 8**  
**Engineering Drawings**  
Digital Equipment Corporation

The material herein is for information purposes only and is subject to change without notice. Digital Equipment Corporation assumes no responsibility for any errors which may appear herein.

These drawings and specifications herein are the property of Digital Equipment Corporation and shall not be reproduced or copied or used in whole or in part as the basis for the manufacture or sale of items without written permission.  
Copyright © 1975, Digital Equipment Corporation







TITLE	SHEET 2 OF 3	SIZE CODE	NUMBER	REV
RX8 FLOPPY DISK SYSTEM	B DD	RX8-Ø	A	

CUSTOMER PRINT SET		ELECTRICAL					CUSTOMER PRINT SET		MECHANICAL						
1	MFG. SET	FIND NO.	DRAWING NO.	REV	NO OF SHT	DESCRIPTION	OPTION NO./FILE DATE	1	MFG. SET	FIND NO.	DRAWING NO.	REV	NO OF SHT	DESCRIPTION	OPTION NO./FILE DATE
X		1	B-DD-RX8-Ø	#	3	DRAWING DIRECTORY, RX8		X		1	D-UA-RX8-Ø-Ø	#	1	RX8 FLOPPY DISK SYSTEM	
			A-SP-RX8-Ø-1			CHECKOUT PROCEDURE					A-PL-RX8-Ø-Ø	#	1	RX8 FLOPPY DISK SYSTEM P.L.	
X			A-PI-RX8-Ø-3	#	1	SHIPPING LIST					A-PI-3700185-0-0		2	PACKAGING INSTRUCTIONS	
			A-SP-RX8-Ø-4	#	12	ACCEPTANCE PROCEDURE					A-PI-3700193-0-0			CUSTOMER PACKAGING INSTRUCTIONS	
			A SP-RX8-Ø-5	#	11	RX8E ENGINEERING SPECIFICATION									
X		3	D-CS-M8357-Ø-1	#	3	RX8-E OMNIBUS INTERFACE				2	B-DD-RXØ1-Ø	#	3	FLOPPY DISK DRIVE	
			A-SP-M8357-Ø-7		3	ACCEPTANCE TEST PROCEDURE									

CUSTOMER PRINT SET CODES  
X = PRINT OF DOCUMENT INCLUDED IN PRINT SET  
C = INCLUDES ALL PRINTS INDICATED ON DOCUMENT  
S = CONFIDENTIAL AUTHORIZED SIGNATURE REQUIRED

TITLE: RX8 FLOPPY DISK SYSTEM  
SHEET 3 OF 3  
SIZE CODE: B DD  
NUMBER: RX8-Ø  
REV: A



THIS DRAWING AND SPECIFICATIONS HEREIN ARE THE PROPERTY OF DIGITAL EQUIPMENT CORPORATION AND SHALL NOT BE REPRODUCED OR COPIED OR USED IN WHOLE OR IN PART AS THE BASIS FOR THE MANUFACTURE OR SALE OF ITEMS WITHOUT WRITTEN PERMISSION. COPYRIGHT © 1975, DIGITAL EQUIPMENT CORPORATION

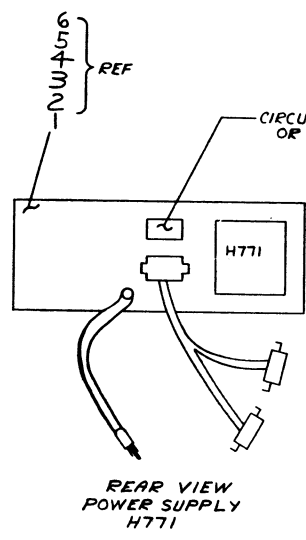
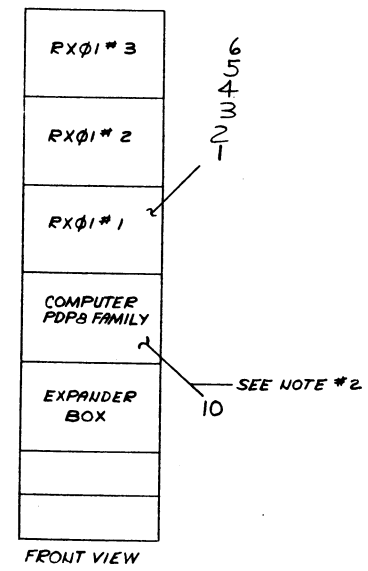
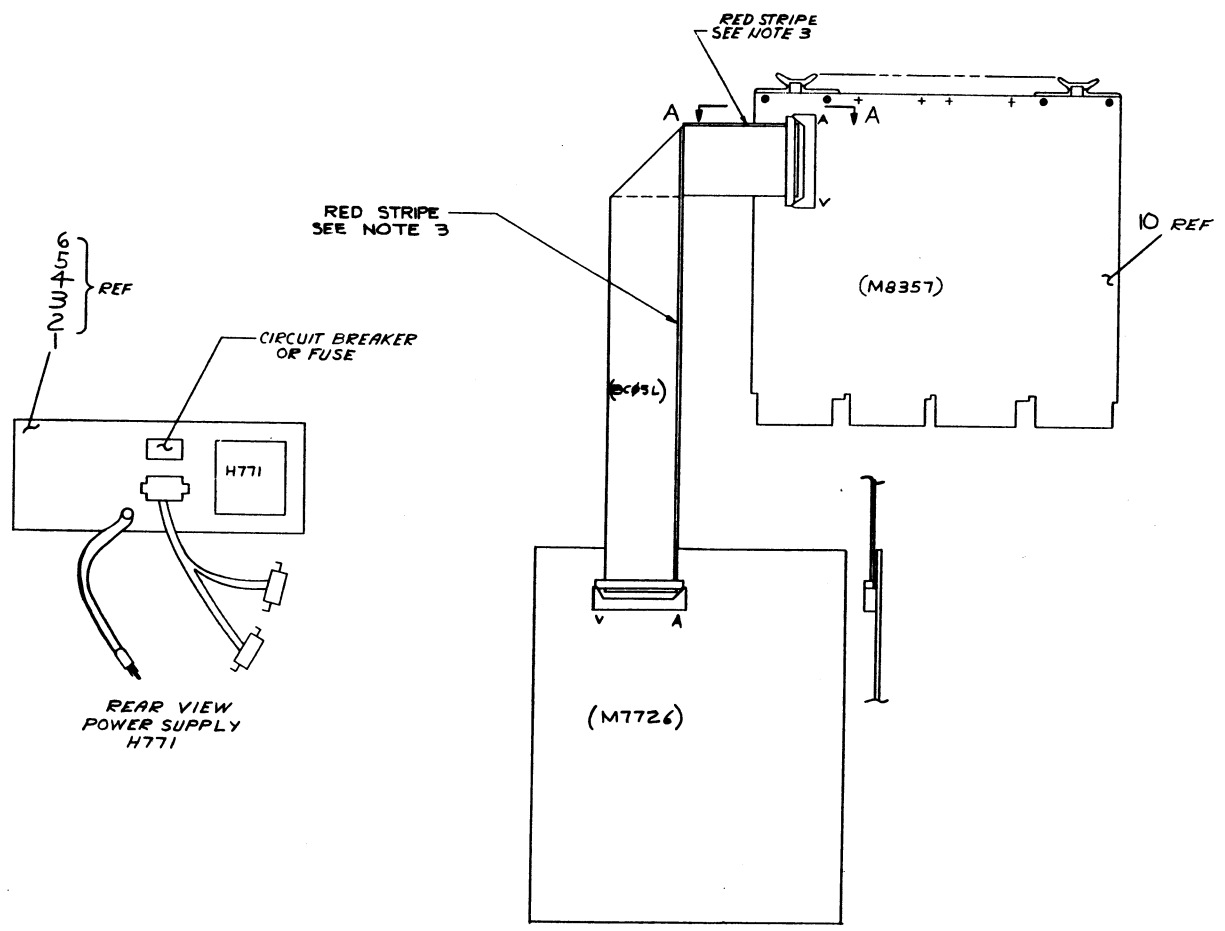
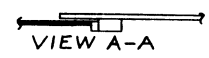
0-0-8XB-0-0 2

LEGEND

NUMBER	VARIATION
RXB-AA	RXØ1-AA ≠ RXB-E INTERFACE, 115 V, 60 HZ
RXB-AC	RXØ1-AC ≠ RXB-E INTERFACE, LOW V, 50 HZ
RXB-AD	RXØ1-AD ≠ RXB-E INTERFACE, HIGH V, 50 HZ
RXB-BA	RXØ1-BA ≠ RXB-E INTERFACE, 115 V, 60 HZ
RXB-BC	RXØ1-BC ≠ RXB-E INTERFACE, LOW V, 50 HZ
RXB-BD	RXØ1-BD ≠ RXB-E INTERFACE, HIGH V, 50 HZ
RXB-DA	RXØ1-DA ≠ RXB-E INTERFACE, 115 V, 60 HZ
RXB-DC	RXØ1-DC ≠ RXB-E INTERFACE, LOW V, 50 HZ
RXB-DD	RXØ1-DD ≠ RXB-E INTERFACE, HIGH V, 50 HZ
RXB-E	OMNIBUS INTERFACE (M8357)

NOTES:

- ONE (1) BCØ5L CABLE SUPPLIED WITH EACH RXØ1.
- ONE (1) M8357 (RXB-E) MODULE REQ'D FOR EACH RXØ1. FOR TWO (2) OR MORE RXØ1'S, CHANGE IOT CODES PER DRAWING D-CS-M8357-0-1 FOR EACH RXØ1 BEYOND #1.
- RED STRIPE ON BCØ5L CABLE INDICATES PIN "A" ON CONNECTOR.



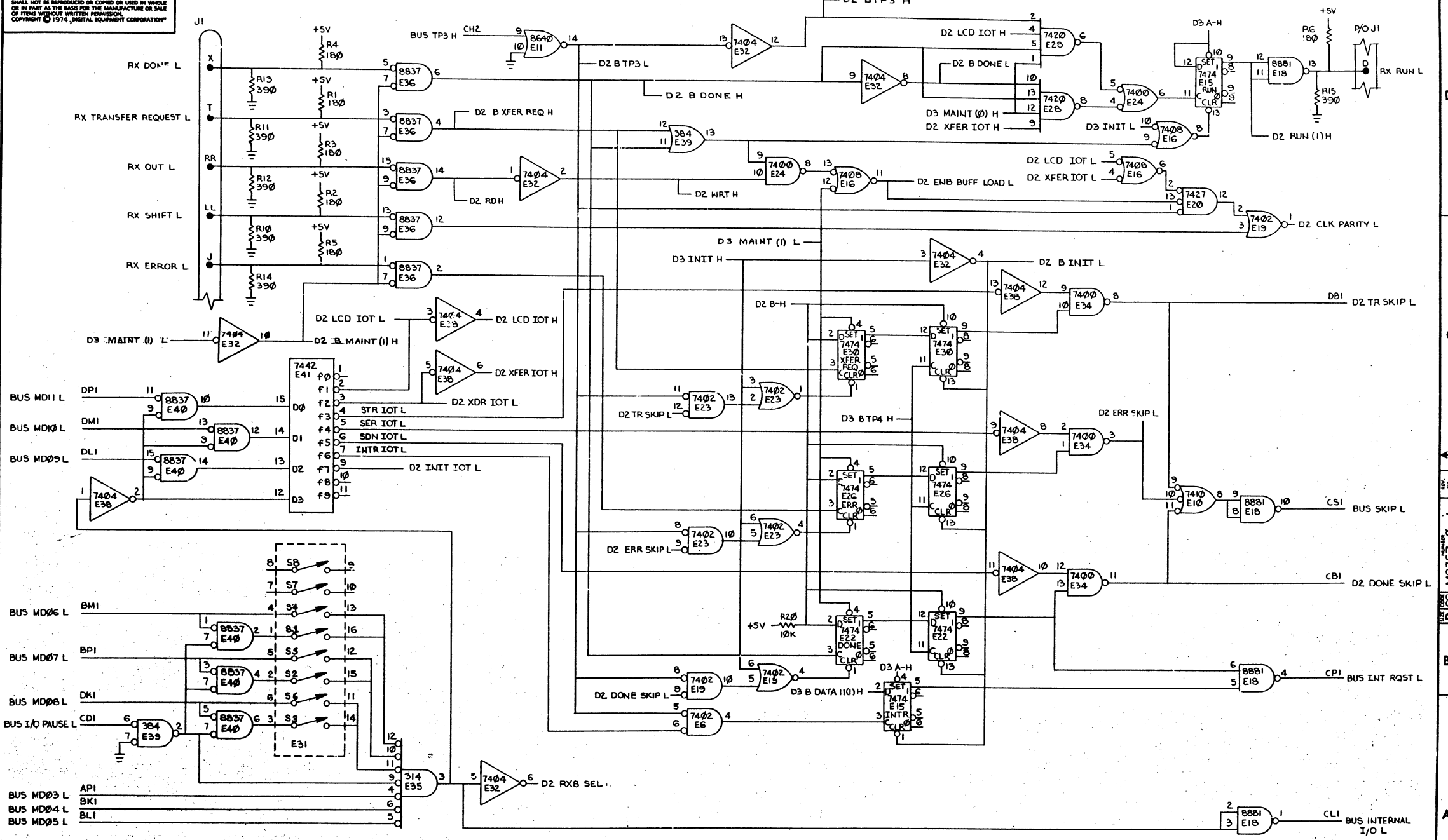
DESCRIPTION		DWG. PART NO.	ITEM NO.
UNLESS OTHERWISE SPECIFIED DIMENSIONS ARE IN INCHES			
ANGLES 45° 30°	CLASS OF ACCURACY (CHECK ONE)	NOMINAL DIMENSION RANGE INCHES	
		OVER TO	OVER TO
SURFACE QUALITY IN	MEDIUM	0.004	0.008
		0.012	0.016
QUANTITY & VARIATION	MICRONCHES	PREFERRED	0.012
			0.016
THIRD ANGLE PROJECTION		FIRST USED ON PDP8 FAMILY	
REMOVE BURRS AND BREAK SHARP CORNERS		TITLE RX8 FLOPPY DISK SYSTEM	
DO NOT SCALE DWG		NEXT HIGHER ASSY.	
MATERIAL A-PL-RXB-Ø-Ø		SIZE CODE D JA RX8-Ø-Ø	
FINISH //		SCALE NONE	

REVISIONS  
CHANGE NO.  
CHK

D JA RX8-Ø-Ø



"THIS DRAWING AND SPECIFICATIONS, HEREIN, ARE THE PROPERTY OF DIGITAL EQUIPMENT CORPORATION AND SHALL NOT BE REPRODUCED OR COPIED OR USED IN WHOLE OR IN PART AS THE BASIS FOR THE MANUFACTURE OR SALE OF ITEMS WITHOUT WRITTEN PERMISSION. COPYRIGHT © 1974, DIGITAL EQUIPMENT CORPORATION"



REVISIONS			(DEVICE SELECT, IOT DECODE & RXOI CONTROL LOGIC)									
CHK	CHANGE NO.	REV.	TITLE	SIZE/SCALE	CODE	NUMBER	REV.					
			RX8-E (D2) OMNIBUS INTERFACE	7-7	DCS	M8357-0-1	B					
			SHEET 2 OF 3	DST.								



