

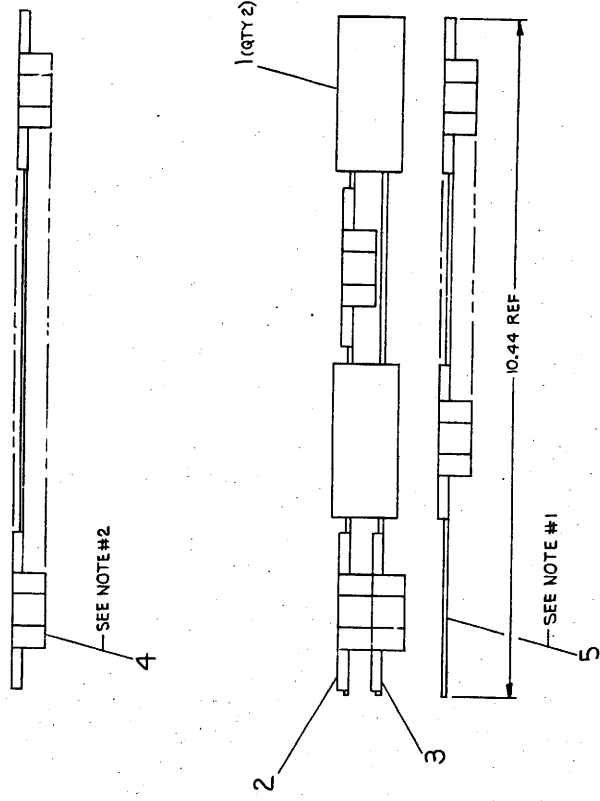
TITLE	CENTRAL PROCESSOR (KK8-F)	SHEET 2 OF 3	SIZE CODE	NUMBER	REV
			B DD	KK8-F	

8 7 6 5 4 3 2 1

THIS DRAWING IS THE PROPERTY OF QUALITY CONSTRUCTION COMPANY. IT IS TO BE USED ONLY FOR THE PROJECT AND SITE SPECIFICALLY IDENTIFIED ON THE DRAWING. IT IS NOT TO BE REPRODUCED OR COPIED OR USED IN WHOLE OR IN PART WITHOUT THE WRITTEN PERMISSION OF QUALITY CONSTRUCTION COMPANY.

NOTES:

1. ITEM #5 (TIMING GENERATOR) MUST BE PLACED IN THE FIRST SLOT OF THE OMNIBUS AFTER THE CONSOLE BOARD. (ITEM #5 CAN BE REPLACED BY E-CS-M8330-0-1, IF THE ETCH REV IS "F" OR LATER)
2. ITEM #4 (BUS LOADS) MUST BE PLACED IN THE LAST SLOT OF THE LAST OMNIBUS
3. REFER TO THE PRIORITY LISTING A-SP-PDP8E-0-4

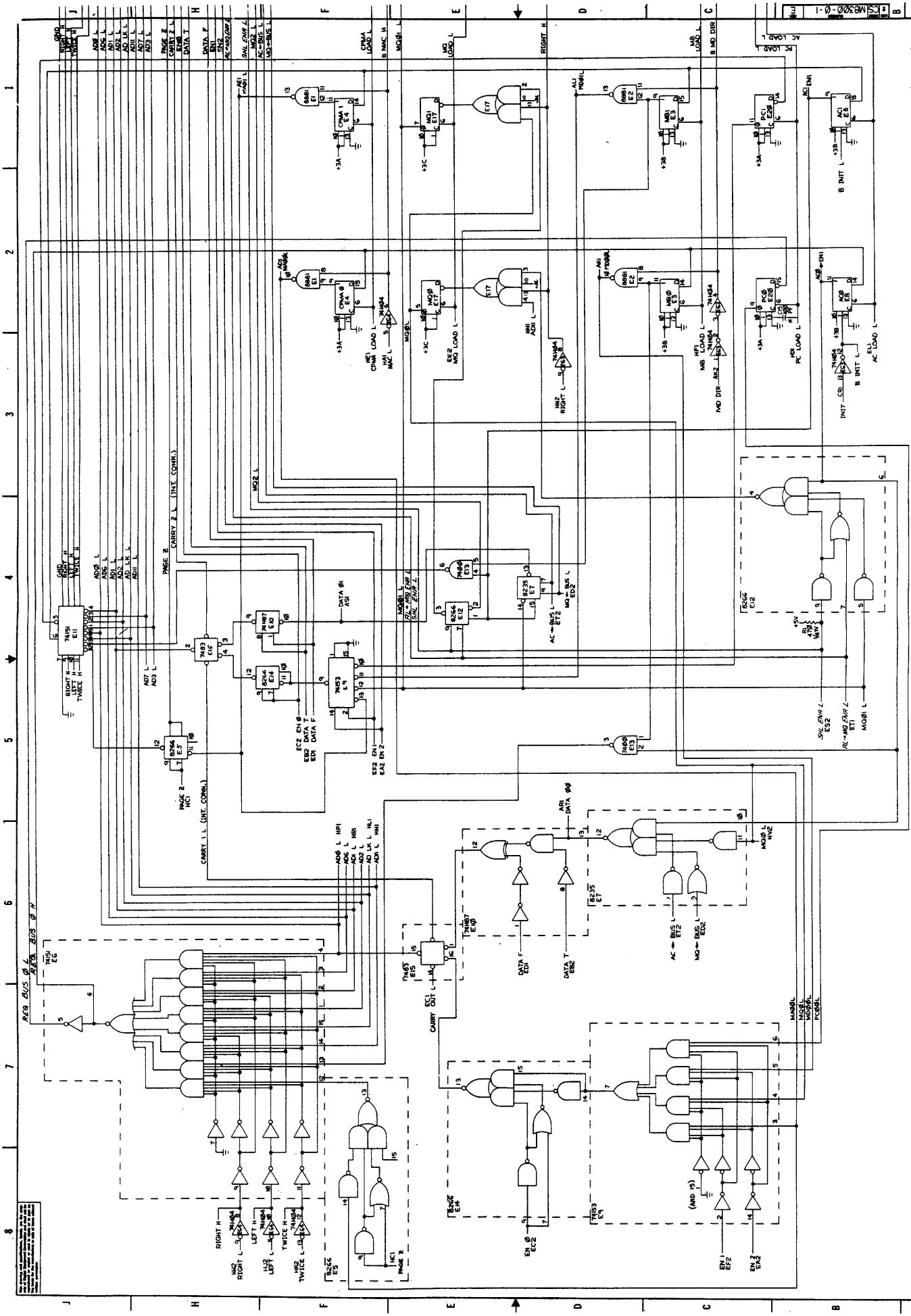


QTY	DESCRIPTION	DWG PART NO	ITEM NO
1	KK8-F SHIPPING LIST	A-PL-KK8-F-2	6
1	TIMING GENERATOR	E-CS-M8330-YB-1	5
1	BUS LOADS	E-CS-M8520-0-1	4
1	MINOR REGISTER CONTROL	E-CS-M8310-0-1	3
1	MAJOR REGISTER	E-CS-M8300-0-1	2
2	EDGE CONNECTOR	B-W-14851-0-0	1

UNLESS OTHERWISE SPECIFIED DIMENSIONS ARE IN INCHES	DWG PART NO	ITEM NO
FINISH		
QUANTITY & VARIATION		
THIRD ANGLE PROJECTION		
REMOVE BURS AND BREAK SHARP CORNERS		
DO NOT SCALE DWG		
MATERIAL SEE PARTS LIST		
FINISH		

DESIGNER	DATE	SCALE	SHEET 1 OF 1
CHK	REV	REV	
CHANGE NO.	REV	REV	
CENTRAL PROCESSOR (KK8-F)			
TITLE		SIZE	NUMBER
PDP8E		D	KK8-F-0
CLASS OF NOMINAL DIMENSION RANGE		REV.	
CLASS	RANGE	REV.	
1	0.000 - 0.000	REV.	
2	0.000 - 0.000	REV.	
3	0.000 - 0.000	REV.	
4	0.000 - 0.000	REV.	
5	0.000 - 0.000	REV.	
6	0.000 - 0.000	REV.	
7	0.000 - 0.000	REV.	
8	0.000 - 0.000	REV.	
9	0.000 - 0.000	REV.	
10	0.000 - 0.000	REV.	
11	0.000 - 0.000	REV.	
12	0.000 - 0.000	REV.	
13	0.000 - 0.000	REV.	
14	0.000 - 0.000	REV.	
15	0.000 - 0.000	REV.	
16	0.000 - 0.000	REV.	
17	0.000 - 0.000	REV.	
18	0.000 - 0.000	REV.	
19	0.000 - 0.000	REV.	
20	0.000 - 0.000	REV.	
21	0.000 - 0.000	REV.	
22	0.000 - 0.000	REV.	
23	0.000 - 0.000	REV.	
24	0.000 - 0.000	REV.	
25	0.000 - 0.000	REV.	
26	0.000 - 0.000	REV.	
27	0.000 - 0.000	REV.	
28	0.000 - 0.000	REV.	
29	0.000 - 0.000	REV.	
30	0.000 - 0.000	REV.	

8 7 6 5 4 3 2 1



REV	DATE	BY	CHKD	APP'D
1	11/15/68	J. J. ...	J. J. ...	J. J. ...
2	11/15/68	J. J. ...	J. J. ...	J. J. ...
3	11/15/68	J. J. ...	J. J. ...	J. J. ...
4	11/15/68	J. J. ...	J. J. ...	J. J. ...
5	11/15/68	J. J. ...	J. J. ...	J. J. ...
6	11/15/68	J. J. ...	J. J. ...	J. J. ...
7	11/15/68	J. J. ...	J. J. ...	J. J. ...
8	11/15/68	J. J. ...	J. J. ...	J. J. ...

FOR SIMPLICITY OF DRAWING THE FOLLOWING PROCEDURES HAVE BEEN USED TO ELIMINATE LINES:

THIS DENOTES CONNECTION BETWEEN PIN 14 AND PIN 15 OF EACH IC. THIS ALSO IS TRUE FOR OTHER CASES SUCH AS 8244, 74187, AND 74151.

CARRY IN IS 1, 7415 ADDRESS IS PIN 13. CARRY OUT OF A 7415 ADDRESS IS PIN 14. THIS DENOTES CONNECTION BETWEEN PIN 14 AND PIN 15 OF EACH IC. THIS ALSO IS TRUE FOR OTHER CASES SUCH AS 8244, 74187, AND 74151.

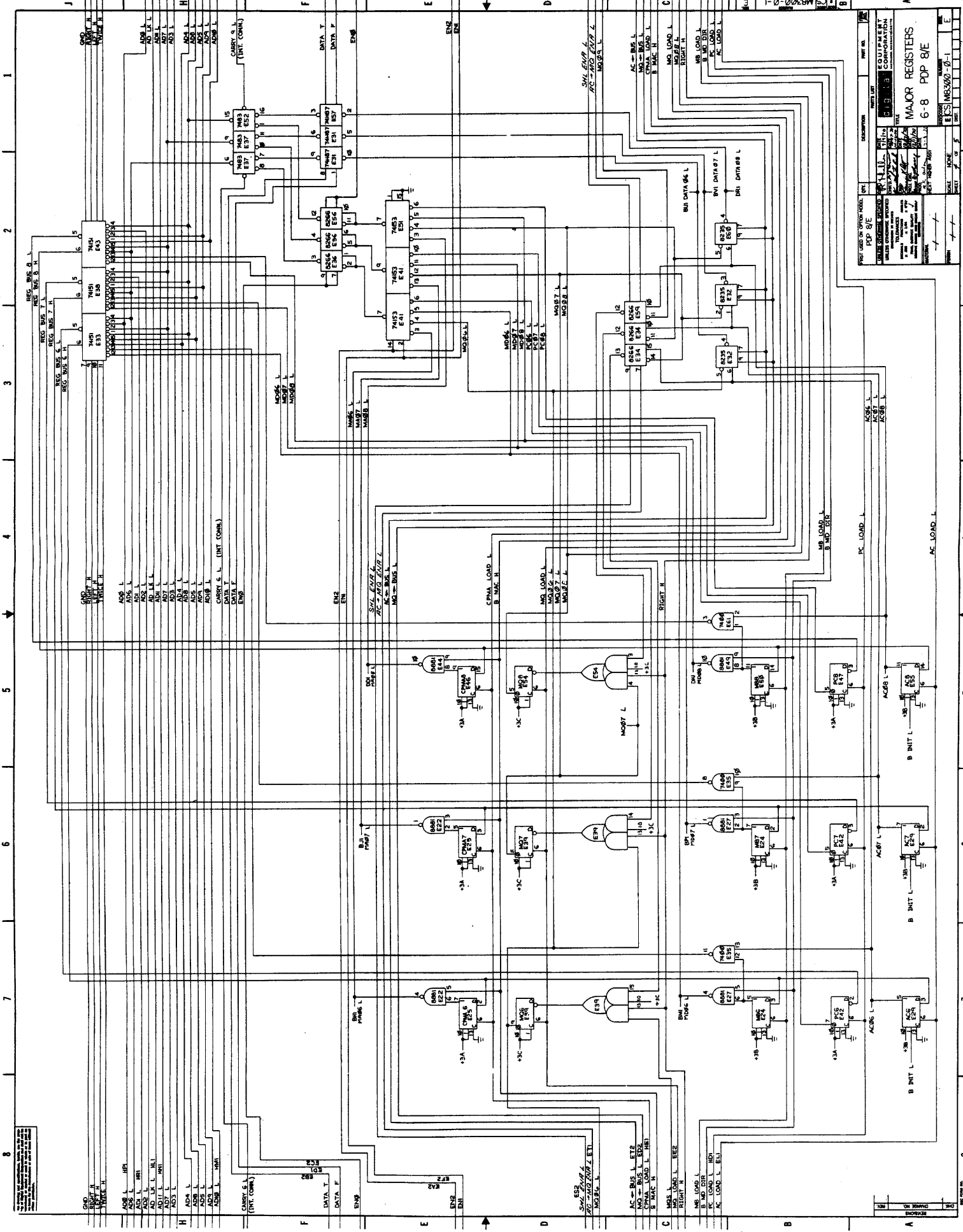
REV	DATE	BY	CHKD	APP'D
1	11/15/68	J. J. ...	J. J. ...	J. J. ...
2	11/15/68	J. J. ...	J. J. ...	J. J. ...
3	11/15/68	J. J. ...	J. J. ...	J. J. ...
4	11/15/68	J. J. ...	J. J. ...	J. J. ...
5	11/15/68	J. J. ...	J. J. ...	J. J. ...
6	11/15/68	J. J. ...	J. J. ...	J. J. ...
7	11/15/68	J. J. ...	J. J. ...	J. J. ...
8	11/15/68	J. J. ...	J. J. ...	J. J. ...

MAJOR REGISTERS
0 E 1 PDP 8/E

THIS DENOTES CONNECTION BETWEEN PIN 14 AND PIN 15 OF EACH IC. THIS ALSO IS TRUE FOR OTHER CASES SUCH AS 8244, 74187, AND 74151.

CARRY IN IS 1, 7415 ADDRESS IS PIN 13. CARRY OUT OF A 7415 ADDRESS IS PIN 14. THIS DENOTES CONNECTION BETWEEN PIN 14 AND PIN 15 OF EACH IC. THIS ALSO IS TRUE FOR OTHER CASES SUCH AS 8244, 74187, AND 74151.

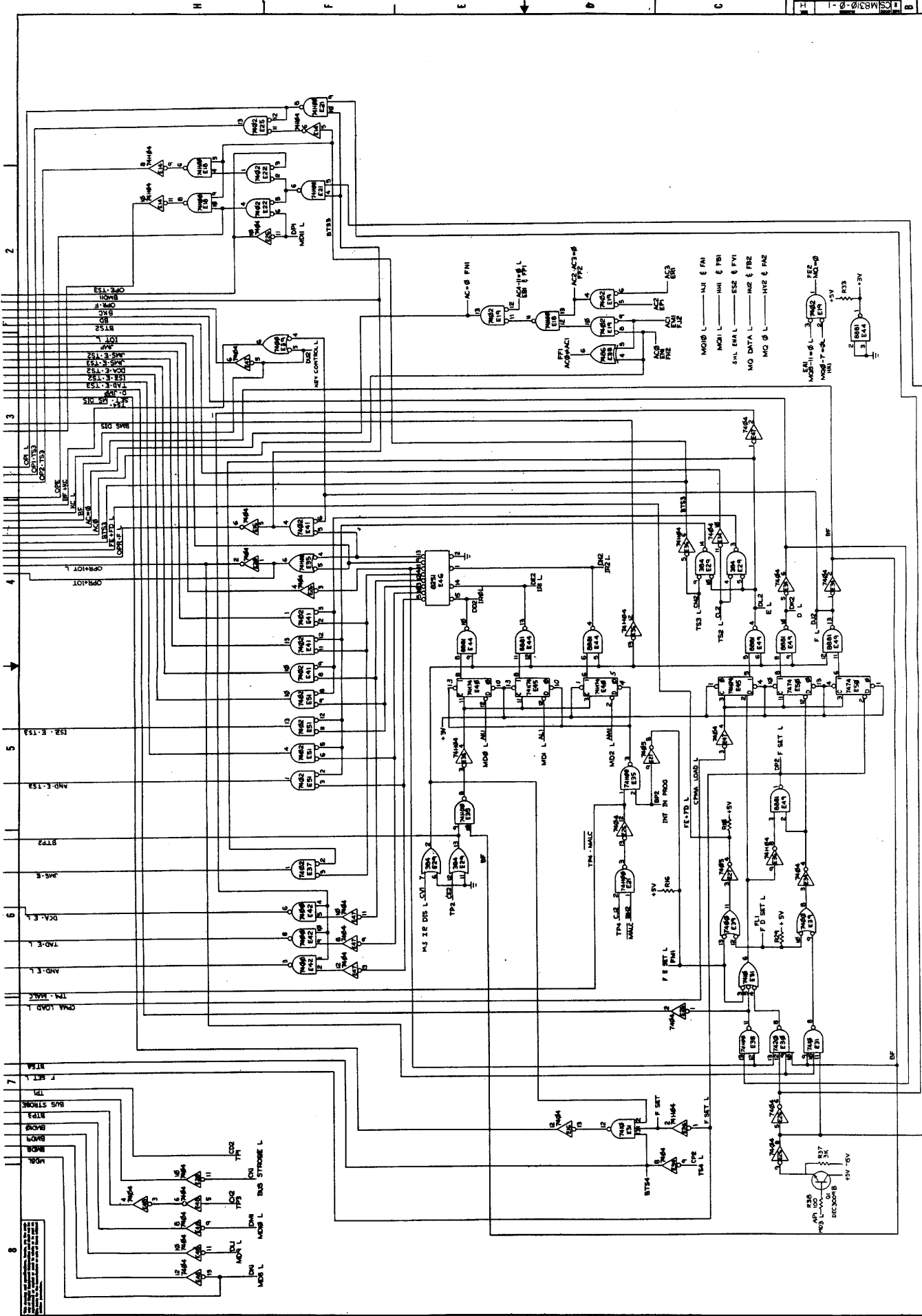
THIS DENOTES CONNECTION BETWEEN PIN 14 AND PIN 15 OF EACH IC. THIS ALSO IS TRUE FOR OTHER CASES SUCH AS 8244, 74187, AND 74151.



EQUIPMENT		PDP 8/E	
TITLE		MAJOR REGISTERS	
DATE		6-8 PDP 8/E	
DRAWN		[Signature]	
CHECKED		[Signature]	
APPROVED		[Signature]	
PART NO.		MS300-0-1	
REV.		1	
QUANTITY		1	
MATERIAL		[Blank]	
REVISIONS		[Blank]	

1. This drawing is the property of Digital Equipment Corporation. It is loaned to you for your use only. It is not to be distributed, copied, or otherwise used without the written consent of Digital Equipment Corporation.

2. This drawing is the property of Digital Equipment Corporation. It is loaned to you for your use only. It is not to be distributed, copied, or otherwise used without the written consent of Digital Equipment Corporation.



REV	DATE	BY	CHKD	DESCRIPTION	APP'D
1	11/11/68	J. L. H.	J. L. H.	INITIAL DESIGN	J. L. H.
2	11/11/68	J. L. H.	J. L. H.	REVISED FOR MANUFACTURE	J. L. H.
3	11/11/68	J. L. H.	J. L. H.	REVISED FOR MANUFACTURE	J. L. H.
4	11/11/68	J. L. H.	J. L. H.	REVISED FOR MANUFACTURE	J. L. H.
5	11/11/68	J. L. H.	J. L. H.	REVISED FOR MANUFACTURE	J. L. H.
6	11/11/68	J. L. H.	J. L. H.	REVISED FOR MANUFACTURE	J. L. H.
7	11/11/68	J. L. H.	J. L. H.	REVISED FOR MANUFACTURE	J. L. H.
8	11/11/68	J. L. H.	J. L. H.	REVISED FOR MANUFACTURE	J. L. H.

CS M830-0-1	DESCRIPTION	M830 MAJOR REG
POP 9/E	DATE	11/11/68
DESIGNED BY	DESIGNED	J. L. H.
CHECKED BY	CHECKED	J. L. H.
APPROVED BY	APPROVED	J. L. H.
DATE	DATE	11/11/68
SCALE	SCALE	A-NL M830-E
SHEET	SHEET	1 OF 4
REV	REV	1

M830 MAJOR REG
CONT.

REF USE OF OTHER AIDS
POP 9/E

DESIGNED BY
CHECKED BY
APPROVED BY
DATE

SCALE
SHEET

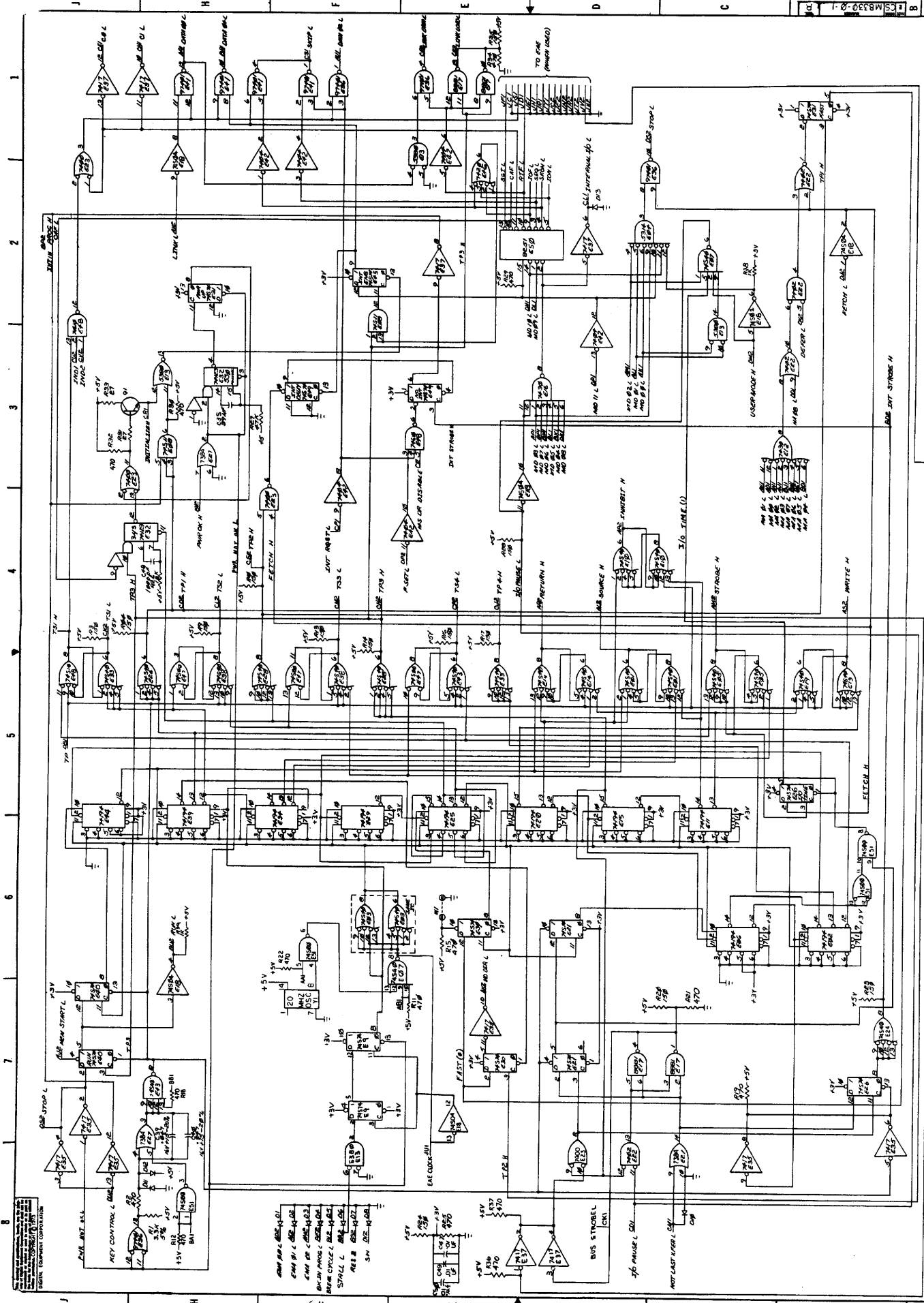
REV

DESCRIPTION

DATE

SCALE

SHEET



REV	DESCRIPTION	DATE	BY
1	ISSUED FOR CONSTRUCTION	10/1/68	...
2
3
4
5
6
7
8

REV	DESCRIPTION	DATE	BY
1	ISSUED FOR CONSTRUCTION	10/1/68	...
2
3
4
5
6
7
8

TIMING GENERATOR

CS/M330-1-1
 PART NO.
 PART LIST
 REVISIONS
 DATE
 BY
 CHECKED
 APPROVED
 DRAWN
 DESIGNED
 ENGINEER

REV	DESCRIPTION	DATE	BY
1	ISSUED FOR CONSTRUCTION	10/1/68	...
2
3
4
5
6
7
8

