



RK05J
Engineering Drawings
Digital Equipment Corporation

The material herein is for information purposes only and is subject to change without notice. Digital Equipment Corporation assumes no responsibility for any errors which may appear herein.

These drawings and specifications herein are the property of Digital Equipment Corporation and shall not be reproduced or copied or used in whole or in part as the basis for the manufacture or sale of items without written permission.
Copyright © 1975, Digital Equipment Corporation



EQUIPMENT CORPORATION
DIGITAL

DRAWING DIRECTORY

"THIS DRAWING AND SPECIFICATIONS, HEREIN, ARE THE PROPERTY OF DIGITAL EQUIPMENT CORPORATION AND SHALL NOT BE REPRODUCED OR COPIED OR USED IN WHOLE OR IN PART AS THE BASIS FOR THE MANUFACTURE OR SALE OF ITEMS WITHOUT WRITTEN PERMISSION. COPYRIGHT © DIGITAL EQUIPMENT CORPORATION"

CUSTOMER PRINT SET INDEX

THIS IS PRINT SET

DRAWING DIRECTORY

SEQUENCE

SEQUENCE

SEQUENCE

7F

7F

7F

7F

7F

7

MFG. PRINT SET

MODULE UTILIZATION LIST
READ/WRITE

INDEX & SECTOR
CYLINDER ADDRESS & DIFFERENCE
CONTROL & INTERLOCK

POSITION SERVO PREAMP
SERVO POWER AMP CIRCUIT

SERVO POWER AMP
CONTROL PANEL CIRCUIT

CONTROL PANEL
RELAY BOARD CIRCUIT

DECAPACK MOTOR RELAYS
CHASSIS WIRING

ACCESSORY LIST
POWER SUPPLY (H743)

WIRE LIST

B-DD-RK05J-0

SHEET #1 ONLY

C-MU-RK05-0-2

D-CS-G180-0-1

D-CS-M7680-0-1

D-CS-M7681-0-1

D-CS-M7701-0-1

D-CS-G938-0-1

D-CS-H634-0-1

E-UA-H604-0-0

E-IA-5409698-0-1

D-CS-5409698-0-0

E-IA-5409574-0-1

D-CS-5409574-0-0

E-IA-5409574-0-0

D-RD-RK05-0-1

A-AL-RK05-0-17

B-DD-H743-0

K-WL-RK05-0-3

MODULE UTILIZATION (PL)

RK05J TESTER

DECAPACK ASSY

DECAPACK ASSY (PL)

WIRED ASSY

LINEAR POSITIONER ASSY

LINEAR POSITIONER ASSY (PL)

H743 POWER SUPPLY

REVISION STATUS

SPACER

A-PL-RK05-0-2

B-DD-RK05J-T

D-UA-RK05J-0-0

A-PL-RK05J-0-0

D-AD-7008696-0-0

D-AD-7008702-0-0

A-PL-7008702-0-0

B-DD-H743-0

A-WT-7008696-0

B-MD-7419064-0-0

UNIT VARIATIONS

VAR	TITLE	PRINT SET
RK05J-AA	DECAPACK 115V 60HZ	X
RK05J-AB	DECAPACK 230V 60HZ	X
RK05J-BA	DECAPACK 115V 50HZ	X
RK05J-BB	DECAPACK 230V 50HZ	X
RK05J-CA	RK05J-AA W. BEZEL FOR H9500	X
RK05J-CB	CAB 115V 60HZ	X
RK05J-CC	RK05J-AB W. BEZEL FOR H9500	X
RK05J-CD	CAB 230V 60HZ	X
RK05J-DE	RK05J-BA W. BEZEL FOR H9500	X
RK05J-DF	CAB 115V 50HZ	X
RK05J-DH	RK05J-BB W. BEZEL FOR H9500	X
RK05J-DJ	CAB 230V 50HZ	X
RK05J-DE	RK05J-AA H960 861 PWR CONTROL	
RK05J-DF	RK05J-AB H960 861	
RK05J-DH	RK05J-BA H960 861	
RK05J-DJ	RK05J-BB H960 861	

REV	CHG. NO.	DATE	REVISIONS
A.V.	RK05-69	AL	DWG WAS RK05-0
A.V.	RK05J-3	AM	
A.V.	RK05J-4	AN	
A.V.	RK05J-5	AP	
A.V.	RK05J-6	AR	
A.V.	RK05J-7	AS	
A.V.	RK05J-8	AT	
A.V.	RK05J-9	AU	
A.V.	RK05J-10	AV	
A.V.	RK05J-11	AW	
A.V.	RK05J-12	AX	
A.V.	RK05J-13	AZ	

USED ON OPTION/MODEL	DRIN.	DATE	TITLE
RK05J	J. FLEMING	1/72	DECAPACK ASSY
	J. FLEMING	5/72	
	PROJ ENG.	DATE	
	A. KARLSBERG	5/72	
	PROD.	DATE	
	A. KARLSBERG	5/72	
	FIELD SERV.	DATE	
	J. WALSH	5/72	

SIZE CODE	NUMBER	REV
B	RK05J 0	AZ

SHEET	OF
1	5

1. DIMENSIONS AND SPECIFICATIONS SHOWN ARE THE
 2. LIST OF MATERIAL COMPONENTS CONTAINED HEREIN SHALL
 3. BE THE BASIS FOR THE MANUFACTURE AND SALE OF
 4. THIS PRODUCT BY THE MANUFACTURER OR HIS
 5. AUTHORIZED REPRESENTATIVE.
 6. DATE: 10/19/74

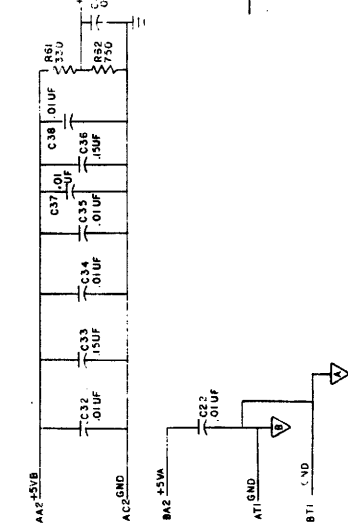
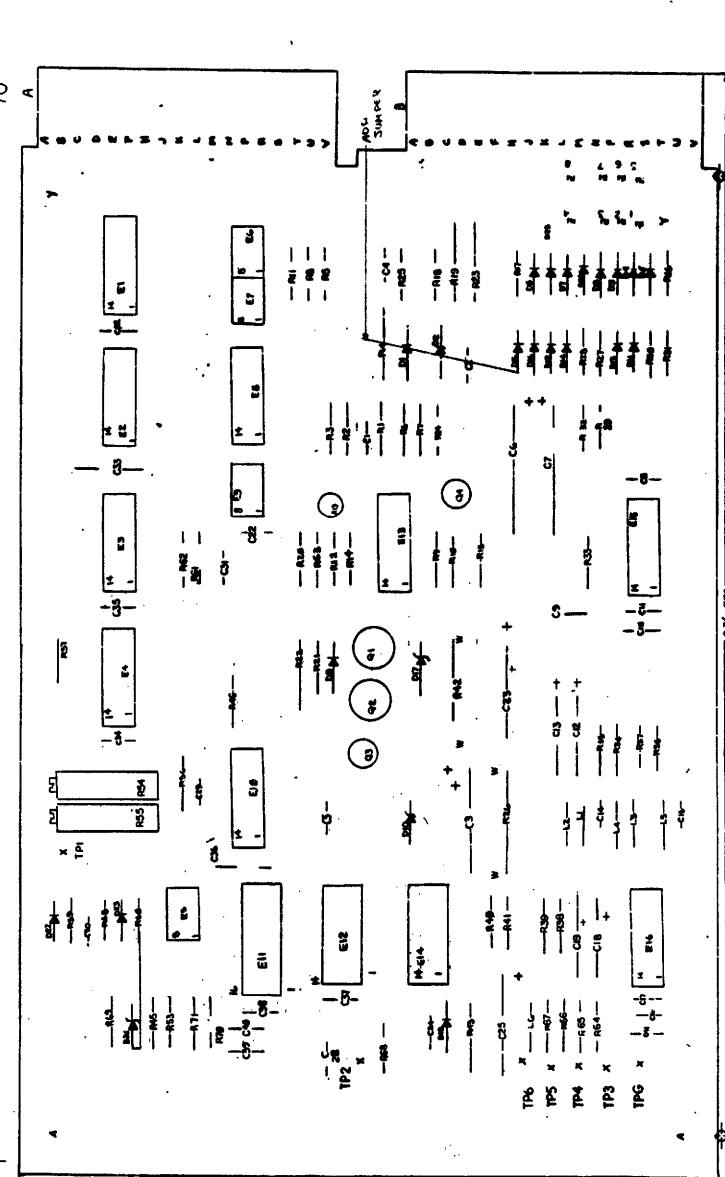
NOTES:

69
 75
 67

FOIL SIDE
 70
 71
 73

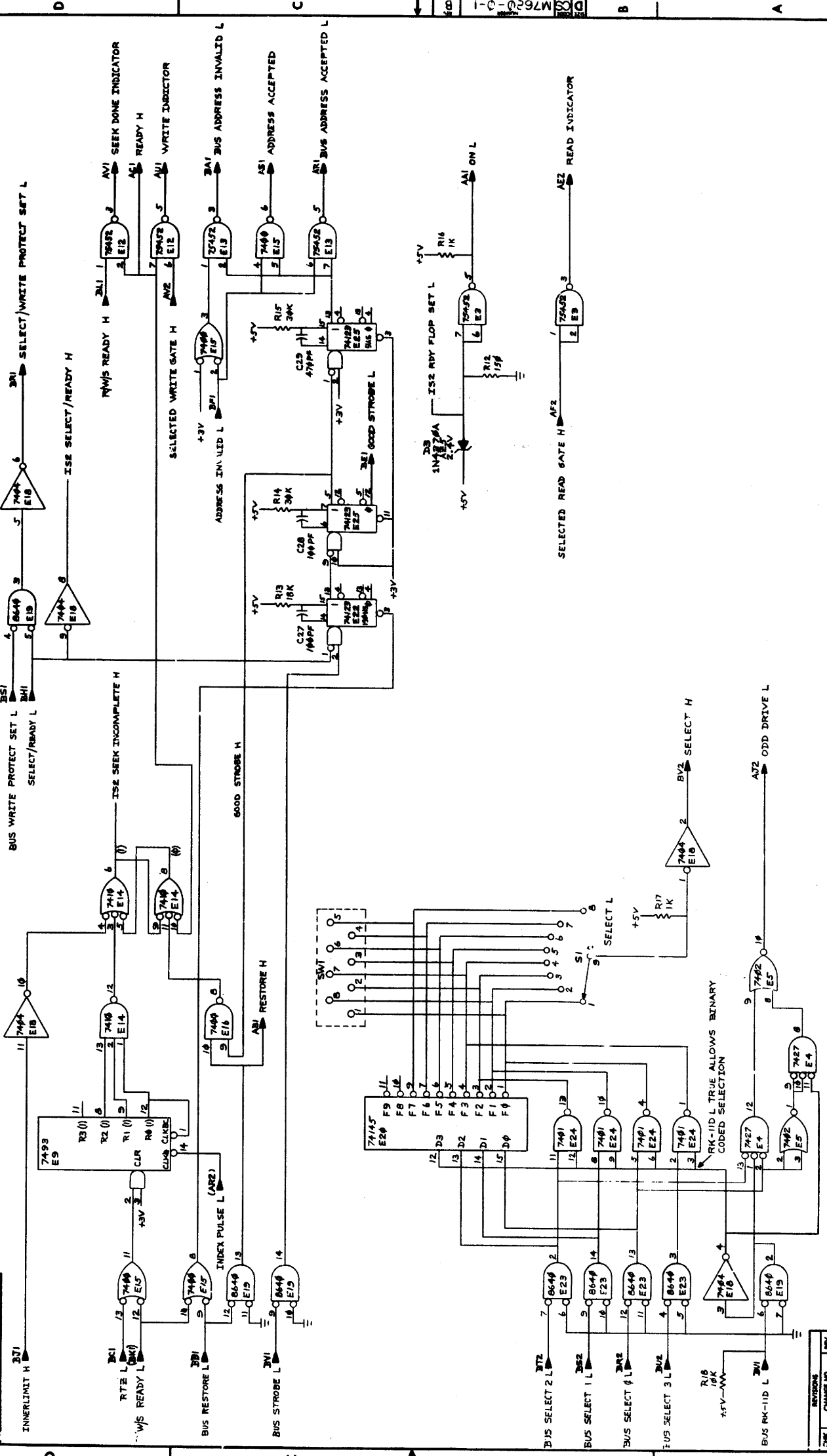
COMPONENT SIDE

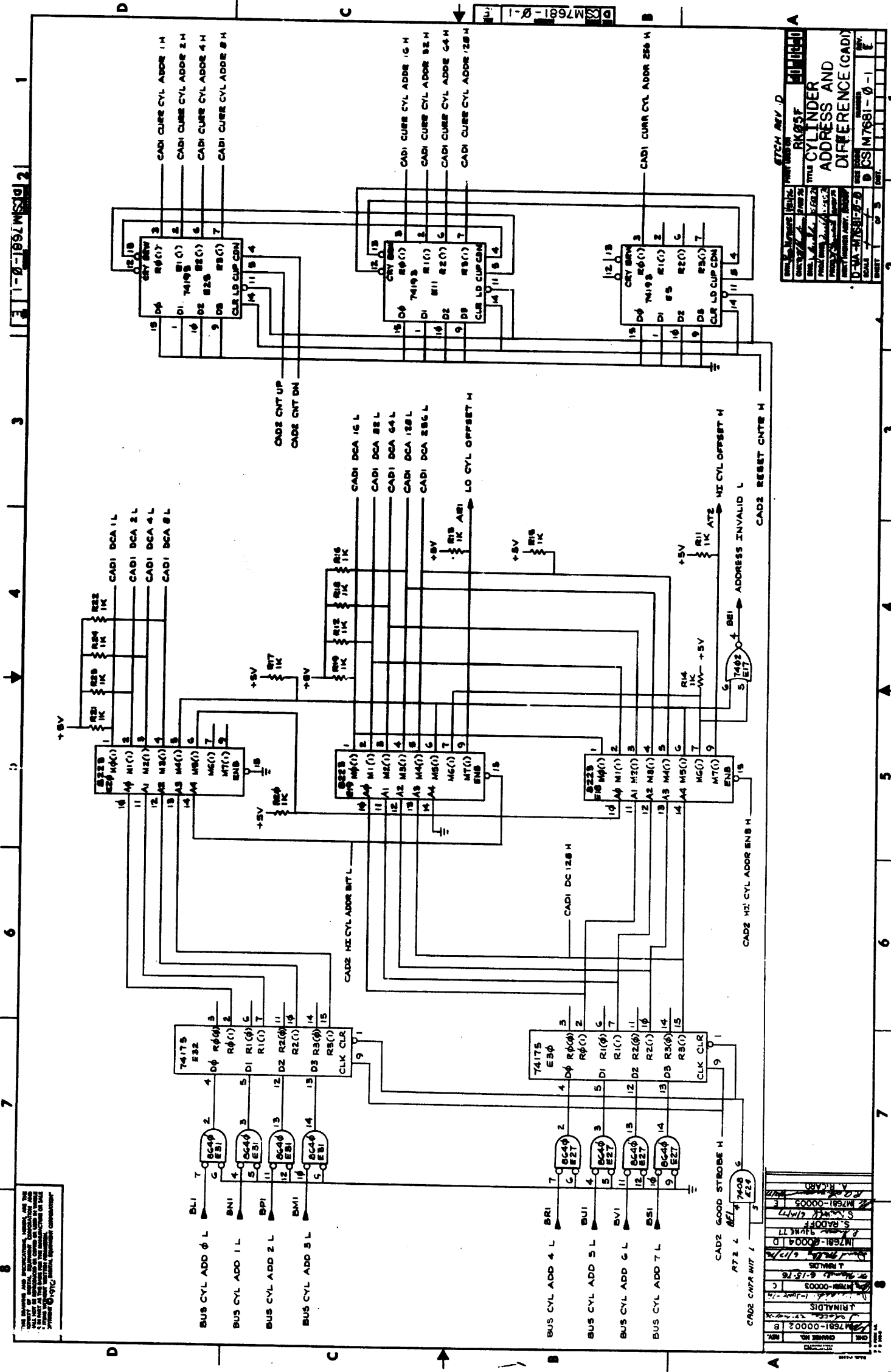
NOTE:
 DO NOT INSERT
 HANDLE HOLE EYELETS
 ON OUTSIDE HANDLE
 HOLES: (2 PLCS)



3	4	5	6	7	8
3	EGE7E9	1.C.DEC 75452			190645
2	E1A.16	1.C.DEC 733			190644
1	E1A	1.C.DEC 1414			190643
1	E1	1.C.DEC 741			190642
1	E1	1.C.DEC 8881			190641
2	E1.5B	1.C.DEC 850			190640
1	E1D	1.C.DEC 8501			190639
1	E1E	1.C.DEC 7472			190638
1	E1.1E2	1.C.DEC 7400			190637
1	E1.3	1.C.DEC 7474			190636
2	L1L2	INDUCTOR 58UH			160665
3	L3.L4.L5	INDUCTOR 100UH			160664
1	G3	TRANSISTOR DEC 85340			160663
1	G4	TRANSISTOR DEC 30098			160662
2	G1.G2	TRANSISTOR 2N2904			1501742
1	R13	POT 1K 1/2W 20% 621-A			1508150-03
2	R14.1.55	POT 10K 3/4W 10% 78PR			1508143-10
2	R16.R17	RES 3.7K 1/4W 5%			1508346
1	R27.R28	RES 8.2K 1/4W 5%			1508179
1	R80	RES 220K 1/4W 5%			1507092
1	R4	RES 270 1/2W 5%			150265
2	R40.R41	RES 580 1/2W 5%			150190
4	R6.9.45.53.70.71	RES 5.6K 1/4W 5%			1501874
1	R1	RES 1.1K 1/4W 5%			1501475
1	R2	RES 3.9K 1/4W 5%			1502439
2	R3	RES 150 1/4W 5%			1501421
2	R4.R5	RES 1.2K 1/4W 5%			1501380
2	R6.R7	RES 1.2K 1/4W 5%			1502482
2	R8.R9	RES 1.2K 1/4W 5%			1502477
2	R10.R11	RES 1.2K 1/4W 5%			1502477
1	R12	RES 1.2K 1/4W 5%			1502477
1	R13	RES 1.2K 1/4W 5%			1502477
1	R14	RES 1.2K 1/4W 5%			1502477
1	R15	RES 1.2K 1/4W 5%			1502477
1	R16	RES 1.2K 1/4W 5%			1502477
1	R17	RES 1.2K 1/4W 5%			1502477
1	R18	RES 1.2K 1/4W 5%			1502477
1	R19	RES 1.2K 1/4W 5%			1502477
1	R20	RES 1.2K 1/4W 5%			1502477
1	R21	RES 1.2K 1/4W 5%			1502477
1	R22	RES 1.2K 1/4W 5%			1502477
1	R23	RES 1.2K 1/4W 5%			1502477
1	R24	RES 1.2K 1/4W 5%			1502477
1	R25	RES 1.2K 1/4W 5%			1502477
1	R26	RES 1.2K 1/4W 5%			1502477
1	R27	RES 1.2K 1/4W 5%			1502477
1	R28	RES 1.2K 1/4W 5%			1502477
1	R29	RES 1.2K 1/4W 5%			1502477
1	R30	RES 1.2K 1/4W 5%			1502477
1	R31	RES 1.2K 1/4W 5%			1502477
1	R32	RES 1.2K 1/4W 5%			1502477
1	R33	RES 1.2K 1/4W 5%			1502477
1	R34	RES 1.2K 1/4W 5%			1502477
1	R35	RES 1.2K 1/4W 5%			1502477
1	R36	RES 1.2K 1/4W 5%			1502477
1	R37	RES 1.2K 1/4W 5%			1502477
1	R38	RES 1.2K 1/4W 5%			1502477
1	R39	RES 1.2K 1/4W 5%			1502477
1	R40	RES 1.2K 1/4W 5%			1502477
1	R41	RES 1.2K 1/4W 5%			1502477
1	R42	RES 1.2K 1/4W 5%			1502477
1	R43	RES 1.2K 1/4W 5%			1502477
1	R44	RES 1.2K 1/4W 5%			1502477
1	R45	RES 1.2K 1/4W 5%			1502477
1	R46	RES 1.2K 1/4W 5%			1502477
1	R47	RES 1.2K 1/4W 5%			1502477
1	R48	RES 1.2K 1/4W 5%			1502477
1	R49	RES 1.2K 1/4W 5%			1502477
1	R50	RES 1.2K 1/4W 5%			1502477
1	R51	RES 1.2K 1/4W 5%			1502477
1	R52	RES 1.2K 1/4W 5%			1502477
1	R53	RES 1.2K 1/4W 5%			1502477
1	R54	RES 1.2K 1/4W 5%			1502477
1	R55	RES 1.2K 1/4W 5%			1502477
1	R56	RES 1.2K 1/4W 5%			1502477
1	R57	RES 1.2K 1/4W 5%			1502477
1	R58	RES 1.2K 1/4W 5%			1502477
1	R59	RES 1.2K 1/4W 5%			1502477
1	R60	RES 1.2K 1/4W 5%			1502477
1	R61	RES 1.2K 1/4W 5%			1502477
1	R62	RES 1.2K 1/4W 5%			1502477
1	R63	RES 1.2K 1/4W 5%			1502477
1	R64	RES 1.2K 1/4W 5%			1502477
1	R65	RES 1.2K 1/4W 5%			1502477
1	R66	RES 1.2K 1/4W 5%			1502477
1	R67	RES 1.2K 1/4W 5%			1502477
1	R68	RES 1.2K 1/4W 5%			1502477
1	R69	RES 1.2K 1/4W 5%			1502477
1	R70	RES 1.2K 1/4W 5%			1502477
1	R71	RES 1.2K 1/4W 5%			1502477
1	R72	RES 1.2K 1/4W 5%			1502477
1	R73	RES 1.2K 1/4W 5%			1502477
1	R74	RES 1.2K 1/4W 5%			1502477
1	R75	RES 1.2K 1/4W 5%			1502477
1	R76	RES 1.2K 1/4W 5%			1502477
1	R77	RES 1.2K 1/4W 5%			1502477
1	R78	RES 1.2K 1/4W 5%			1502477
1	R79	RES 1.2K 1/4W 5%			1502477
1	R80	RES 1.2K 1/4W 5%			1502477
1	R81	RES 1.2K 1/4W 5%			1502477
1	R82	RES 1.2K 1/4W 5%			1502477
1	R83	RES 1.2K 1/4W 5%			1502477
1	R84	RES 1.2K 1/4W 5%			1502477
1	R85	RES 1.2K 1/4W 5%			1502477
1	R86	RES 1.2K 1/4W 5%			1502477
1	R87	RES 1.2K 1/4W 5%			1502477
1	R88	RES 1.2K 1/4W 5%			1502477
1	R89	RES 1.2K 1/4W 5%			1502477
1	R90	RES 1.2K 1/4W 5%			1502477
1	R91	RES 1.2K 1/4W 5%			1502477
1	R92	RES 1.2K 1/4W 5%			1502477
1	R93	RES 1.2K 1/4W 5%			1502477
1	R94	RES 1.2K 1/4W 5%			1502477
1	R95	RES 1.2K 1/4W 5%			1502477
1	R96	RES 1.2K 1/4W 5%			1502477
1	R97	RES 1.2K 1/4W 5%			1502477
1	R98	RES 1.2K 1/4W 5%			1502477
1	R99	RES 1.2K 1/4W 5%			1502477
1	R100	RES 1.2K 1/4W 5%			1502477
1	R101	RES 1.2K 1/4W 5%			1502477
1	R102	RES 1.2K 1/4W 5%			1502477
1	R103	RES 1.2K 1/4W 5%			1502477
1	R104	RES 1.2K 1/4W 5%			1502477
1	R105	RES 1.2K 1/4W 5%			1502477
1	R106	RES 1.2K 1/4W 5%			1502477
1	R107	RES 1.2K 1/4W 5%			1502477
1	R108	RES 1.2K 1/4W 5%			1502477
1	R109	RES 1.2K 1/4W 5%			1502477
1	R110	RES 1.2K 1/4W 5%			1502477
1	R111	RES 1.2K 1/4W 5%			1502477
1	R112	RES 1.2K 1/4W 5%			1502477
1	R113	RES 1.2K 1/4W 5%			1502477
1	R114	RES 1.2K 1/4W 5%			1502477
1	R115	RES 1.2K 1/4W 5%			1502477
1	R116	RES 1.2K 1/4W 5%			1502477
1	R117	RES 1.2K 1/4W 5%			1502477
1	R118	RES 1.2K 1/4W 5%			1502477
1	R119	RES 1.2K 1/4W 5%			1502477
1	R120	RES 1.2K 1/4W 5%			1502477
1	R121	RES 1.2K 1/4W 5%			1502477
1	R122	RES 1.2K 1/4W 5%			1502477
1	R123	RES 1.2K 1/4W 5%			1502477
1	R124	RES 1.2K 1/4W 5%			1502477
1	R125	RES 1.2K 1/4W 5%			1502477
1	R126	RES 1.2K 1/4W 5%			1502477
1	R127	RES 1.2K 1/4W 5%			1502477
1	R128	RES 1.2K 1/4W 5%			1502477
1	R129	RES 1.2K 1/4W 5%			1502477
1	R130	RES 1.2K 1/4W 5%			1502477
1	R131	RES 1.2K 1/4W 5%			1502477
1	R132	RES 1.2K 1/4W 5%			1502477
1	R133	RES 1.2K 1/4W 5%			1502477
1	R134	RES 1.2K 1/4W 5%			1502477
1	R135	RES 1.2K 1/4W 5%			1502477
1	R136	RES 1.2K 1/4W 5%			1502477
1	R137	RES 1.2K 1/4W 5%			15024

1. THIS DRAWING IS THE PROPERTY OF THE COMPANY AND IS NOT TO BE REPRODUCED OR TRANSMITTED IN ANY FORM OR BY ANY MEANS, ELECTRONIC OR MECHANICAL, INCLUDING PHOTOCOPYING, RECORDING, OR BY ANY INFORMATION STORAGE AND RETRIEVAL SYSTEM, WITHOUT PERMISSION IN WRITING FROM THE COMPANY.
 2. THE COMPANY ASSUMES NO LIABILITY FOR DAMAGES OF ANY KIND, INCLUDING CONSEQUENTIAL DAMAGES, ARISING FROM THE USE OF THIS DRAWING.
 3. DIMENSIONS ARE IN INCHES UNLESS OTHERWISE SPECIFIED.
 4. TOLERANCES ARE AS FOLLOWS: FRACTIONS - ±0.005; DECIMALS - ±0.0005; ANGLES - ±0.005°; HOLE DIA. - ±0.0005.





1
2
3
4
5
6
7
8

REV	DATE	BY	CHKD	APP'D
1				
TITLE: CADI CYLINDER ADDRESS AND DIFFERENCE (CADI)				
PROJECT: M7681-0-1				
DRAWING NO.: M7681-0-1				
SHEET NO.: 1 OF 3				
SCALE:				
DESIGNED BY:				
CHECKED BY:				
APPROVED BY:				
PART NUMBER:				
QTY:				
UNIT:				
MFG:				
ASSEMBLY:				
TEST:				
STORAGE:				
HANDLING:				
PREPARED BY:				
DATE:				

1-0-10777MSJ 2

3

4

4

3

6

6

6

7

6

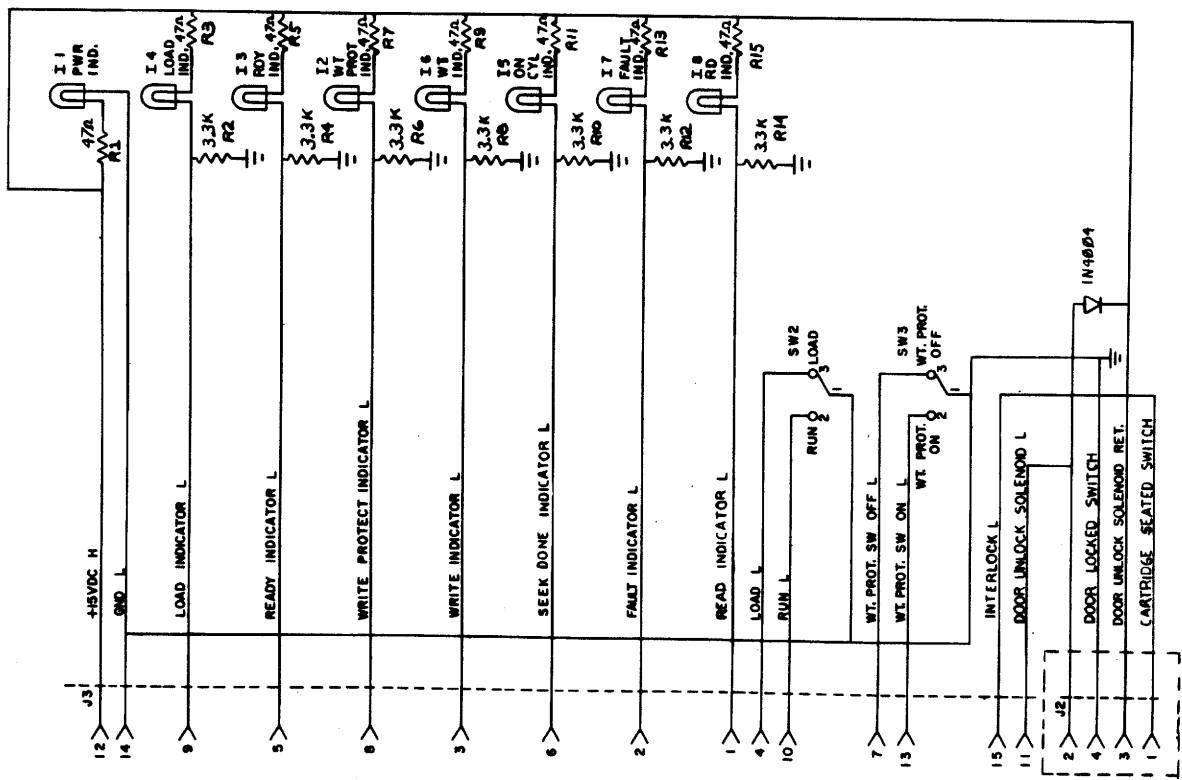
6

QTY	REF DESIGNATION	DESCRIPTION	PART NO.	ITEM NO.
		X-Y COORDINATE HOLE LOCATION	K-00-47701-0-4	1
		ASSY/DRILLING HOLE LAYOUT	E-44-47701-0-5	2
		MODULE ECO HISTORY	B-44-47701-0-6	3
		ETCHED CIRCUIT BOARD	5003714	4
25	C1-C20, C25-C27, C30, C31	CAP. .01 UF. 18V. 20%. DISC	1001810	5
1	C21	CAP. .15 UF. 20V. 20%. TANT	1004812	6
1	C22	CAP. .10 UF. 20V. 20%. TANT	1004513	7
1	C23	CAP. .15 UF. 35V. 20%. TANT	1007180	8
2	C28, C29	CAP. 470 PF. 18V. 5%. DM	1000024	9
1	D8	DIODE. DM84	1100114	10
2	D1, D11	DIODE. D070	1102182	11
2	D9, D10	DIODE. 1N4001	1102842	12
1	D6	DIODE. 1N746A. 3.3V	1104860	13
1	D4	DIODE. 1N740. 3.9V	1100121	14
2	D5, D7	DIODE. 1N7585. 12V	1110843	15
A/R		CHIPSETS	1210244-9	16
1	R27, R10	RES. 100 OHMS. 1/4". 5%	1300229	17
2	R2, R3	RES. 330 OHMS. 1/4". 5%	1300295	18
2	R18, R19	RES. 470 OHMS. 1/4". 5%	1300316	19
1	R1	RES. 750 OHMS. 1/4". 5%	1301401	20
9	R12, R13, R20, R24, R25, R28, R29, R14	RES. 1K. 1/4". 5%	1300385	21
1	R28	RES. 1.5K. 1/4". 5%	1300391	22
1	R4	RES. 680 OHMS. 1/4". 5%	1301424	23
2	R11, R21	RES. 47K. 1/4". 5%	1300447	24
1	R10	RES. 5.6K. 1/4". 5%	1301974	25
5	R6, R17, R22, R23	RES. 10K. 1/4". 5%	1300479	26
2	R7, R10	RES. 1M. 1/4". 5%	1300995	28
1	R6	RES. 10 M. 1/4". 5%	1302668	30
1	R9	RES. 10 K. 1/4". 10%. 78 PR	1300143-10	31
1	Q4	TRANSISTOR. DEC 8531	1509338	32
1	Q1	TRANSISTOR. DEC 2218	1501801	33
1	Q3	TRANSISTOR. DEC 85340	1502408-00	34
1	Q2	TRANSISTOR. DEC 4403	151671	35
4	E3, E7, E10, E14	I.C.. DEC 7400	1805575	36
1	E20	I.C.. DEC 7402	1800004	37
2	E11, E8	I.C.. DEC 7404	1800806	38
2	E12, E10	I.C.. DEC 7410	1805578	39
2	E9, E15	I.C.. DEC 7474	1805547	40
2	E22, E17	I.C.. DEC 7483	1800054	41
2	E21, E13	I.C.. DEC 74123	1810436	42
8	E2, E4, E6, E5, E18, E19	I.C.. DEC 75451	1810206	43
1	E1	I.C.. DEC 301	1810282	44
4		EYELET #6SL-7	9008732	45
2		HANDLE FLIP CHIP - MAGENTA	9008337-06	46
1		SCREW #4-40 X 5/16	9008010-1	47
1		NUT. #6-40	9008537	48
1	D12	DIODE. 1N5248B. 18V. 5%	1110786	49
1	C24	CAP. .047 UF. 18V. DISC	1000878	50

REV.	CHANGE NO.	DESCRIPTION	DATE
1			

REV.	CHANGE NO.	DESCRIPTION	DATE
1			

THIS SCHEMATIC IS FURNISHED ONLY FOR TEST AND MAINTENANCE PURPOSES. THE CIRCUITS ARE PROPRIETARY IN NATURE AND SHOULD BE TREATED ACCORDINGLY. COPYRIGHT 1988 BY DIGITAL EQUIPMENT CORPORATION



SIZE CODE CS 5409698-0-1
 NUMBER

REVISIONS		DATE		TRANSISTOR & DIODE CONVERSION CHART		REV. F	
1	CHG CHG NO. REV.	11-29-71	DEC	EIA	EIA	5409698-0-1	5409698-0-1
2	CHG CHG NO. REV.	11-29-71	DEC	DEC	DEC	5409698-0-1	5409698-0-1
3	CHG CHG NO. REV.	11-29-71	DEC	EIA	EIA	5409698-0-1	5409698-0-1
4	CHG CHG NO. REV.	11-29-71	DEC	DEC	DEC	5409698-0-1	5409698-0-1
5	CHG CHG NO. REV.	11-29-71	DEC	EIA	EIA	5409698-0-1	5409698-0-1
6	CHG CHG NO. REV.	11-29-71	DEC	DEC	DEC	5409698-0-1	5409698-0-1
7	CHG CHG NO. REV.	11-29-71	DEC	EIA	EIA	5409698-0-1	5409698-0-1
8	CHG CHG NO. REV.	11-29-71	DEC	DEC	DEC	5409698-0-1	5409698-0-1
9	CHG CHG NO. REV.	11-29-71	DEC	EIA	EIA	5409698-0-1	5409698-0-1
10	CHG CHG NO. REV.	11-29-71	DEC	DEC	DEC	5409698-0-1	5409698-0-1
11	CHG CHG NO. REV.	11-29-71	DEC	EIA	EIA	5409698-0-1	5409698-0-1
12	CHG CHG NO. REV.	11-29-71	DEC	DEC	DEC	5409698-0-1	5409698-0-1
13	CHG CHG NO. REV.	11-29-71	DEC	EIA	EIA	5409698-0-1	5409698-0-1
14	CHG CHG NO. REV.	11-29-71	DEC	DEC	DEC	5409698-0-1	5409698-0-1
15	CHG CHG NO. REV.	11-29-71	DEC	EIA	EIA	5409698-0-1	5409698-0-1
16	CHG CHG NO. REV.	11-29-71	DEC	DEC	DEC	5409698-0-1	5409698-0-1
17	CHG CHG NO. REV.	11-29-71	DEC	EIA	EIA	5409698-0-1	5409698-0-1
18	CHG CHG NO. REV.	11-29-71	DEC	DEC	DEC	5409698-0-1	5409698-0-1
19	CHG CHG NO. REV.	11-29-71	DEC	EIA	EIA	5409698-0-1	5409698-0-1
20	CHG CHG NO. REV.	11-29-71	DEC	DEC	DEC	5409698-0-1	5409698-0-1
21	CHG CHG NO. REV.	11-29-71	DEC	EIA	EIA	5409698-0-1	5409698-0-1
22	CHG CHG NO. REV.	11-29-71	DEC	DEC	DEC	5409698-0-1	5409698-0-1
23	CHG CHG NO. REV.	11-29-71	DEC	EIA	EIA	5409698-0-1	5409698-0-1
24	CHG CHG NO. REV.	11-29-71	DEC	DEC	DEC	5409698-0-1	5409698-0-1
25	CHG CHG NO. REV.	11-29-71	DEC	EIA	EIA	5409698-0-1	5409698-0-1
26	CHG CHG NO. REV.	11-29-71	DEC	DEC	DEC	5409698-0-1	5409698-0-1
27	CHG CHG NO. REV.	11-29-71	DEC	EIA	EIA	5409698-0-1	5409698-0-1
28	CHG CHG NO. REV.	11-29-71	DEC	DEC	DEC	5409698-0-1	5409698-0-1
29	CHG CHG NO. REV.	11-29-71	DEC	EIA	EIA	5409698-0-1	5409698-0-1
30	CHG CHG NO. REV.	11-29-71	DEC	DEC	DEC	5409698-0-1	5409698-0-1
31	CHG CHG NO. REV.	11-29-71	DEC	EIA	EIA	5409698-0-1	5409698-0-1
32	CHG CHG NO. REV.	11-29-71	DEC	DEC	DEC	5409698-0-1	5409698-0-1
33	CHG CHG NO. REV.	11-29-71	DEC	EIA	EIA	5409698-0-1	5409698-0-1
34	CHG CHG NO. REV.	11-29-71	DEC	DEC	DEC	5409698-0-1	5409698-0-1
35	CHG CHG NO. REV.	11-29-71	DEC	EIA	EIA	5409698-0-1	5409698-0-1
36	CHG CHG NO. REV.	11-29-71	DEC	DEC	DEC	5409698-0-1	5409698-0-1
37	CHG CHG NO. REV.	11-29-71	DEC	EIA	EIA	5409698-0-1	5409698-0-1
38	CHG CHG NO. REV.	11-29-71	DEC	DEC	DEC	5409698-0-1	5409698-0-1
39	CHG CHG NO. REV.	11-29-71	DEC	EIA	EIA	5409698-0-1	5409698-0-1
40	CHG CHG NO. REV.	11-29-71	DEC	DEC	DEC	5409698-0-1	5409698-0-1
41	CHG CHG NO. REV.	11-29-71	DEC	EIA	EIA	5409698-0-1	5409698-0-1
42	CHG CHG NO. REV.	11-29-71	DEC	DEC	DEC	5409698-0-1	5409698-0-1
43	CHG CHG NO. REV.	11-29-71	DEC	EIA	EIA	5409698-0-1	5409698-0-1
44	CHG CHG NO. REV.	11-29-71	DEC	DEC	DEC	5409698-0-1	5409698-0-1
45	CHG CHG NO. REV.	11-29-71	DEC	EIA	EIA	5409698-0-1	5409698-0-1
46	CHG CHG NO. REV.	11-29-71	DEC	DEC	DEC	5409698-0-1	5409698-0-1
47	CHG CHG NO. REV.	11-29-71	DEC	EIA	EIA	5409698-0-1	5409698-0-1
48	CHG CHG NO. REV.	11-29-71	DEC	DEC	DEC	5409698-0-1	5409698-0-1
49	CHG CHG NO. REV.	11-29-71	DEC	EIA	EIA	5409698-0-1	5409698-0-1
50	CHG CHG NO. REV.	11-29-71	DEC	DEC	DEC	5409698-0-1	5409698-0-1

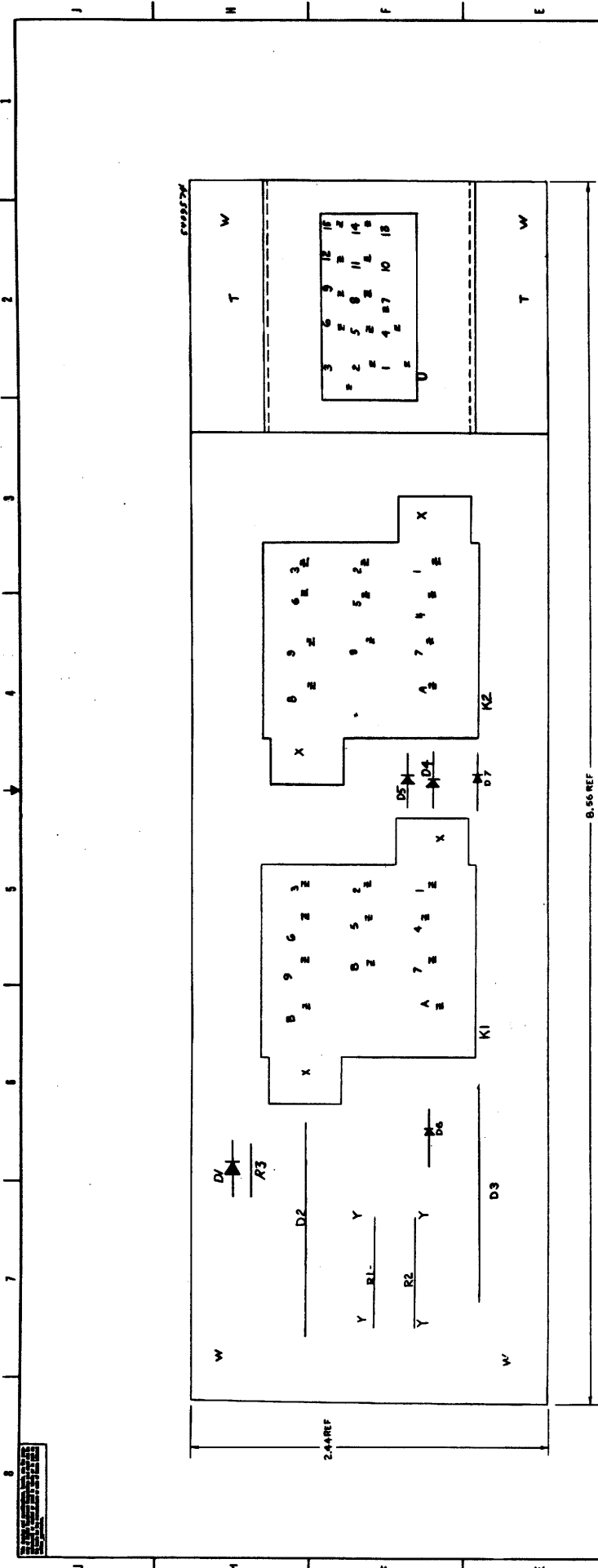
TITLE RK7-1
 RK05 CONTROL PANEL
 SIZE CODE C CS
 NUMBER 5409698-0-1
 PRINTED CIRCUIT REV. E F

digital
 EQUIPMENT
 CORPORATION
 MAYFORD, MASSACHUSETTS

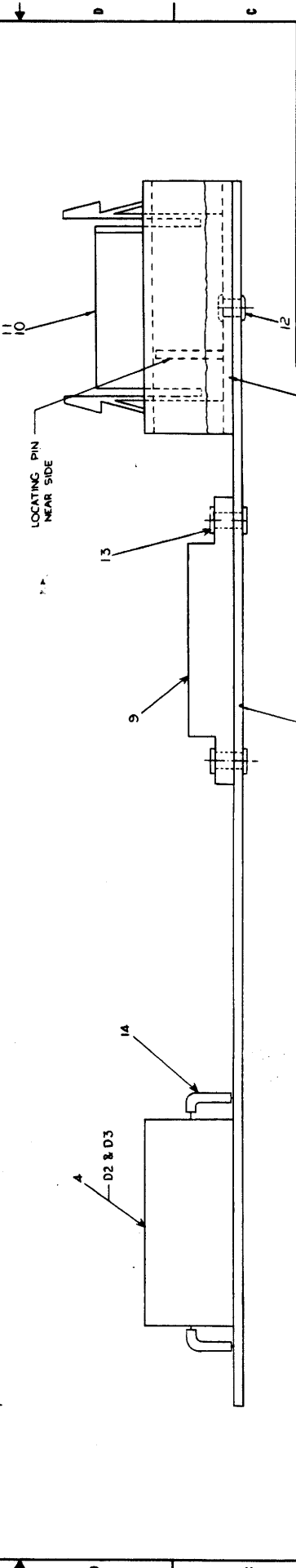
DATE 11-29-71
 CHG'D S. Campbell
 DATE 11-29-71
 DATE 11-29-71
 DATE 11-29-71

DATE 11-29-71
 DATE 11-29-71
 DATE 11-29-71
 DATE 11-29-71

REVISIONS
 1
 2
 3
 4
 5
 6
 7
 8
 9
 10
 11
 12
 13
 14
 15
 16
 17
 18
 19
 20
 21
 22
 23
 24
 25
 26
 27
 28
 29
 30
 31
 32
 33
 34
 35
 36
 37
 38
 39
 40
 41
 42
 43
 44
 45
 46
 47
 48
 49
 50



B.56 REF



EQUIPMENT IDENTIFICATION		EQUIPMENT COMPARISON	
ITEM NO.	DESCRIPTION	ITEM NO.	DESCRIPTION
1	DECK	1	DECK
2	RELAY	2	RELAY
3	RELAY	3	RELAY
4	RELAY	4	RELAY
5	RELAY	5	RELAY
6	RELAY	6	RELAY
7	RELAY	7	RELAY
8	RELAY	8	RELAY
9	RELAY	9	RELAY
10	RELAY	10	RELAY
11	RELAY	11	RELAY
12	RELAY	12	RELAY
13	RELAY	13	RELAY
14	RELAY	14	RELAY
15	RELAY	15	RELAY
16	RELAY	16	RELAY
17	RELAY	17	RELAY
18	RELAY	18	RELAY

CAUTION	
CHANGE COULD AFFECT ILL LISTING	
ITEM NO.	DESCRIPTION
1	RELAY
2	RELAY
3	RELAY
4	RELAY
5	RELAY
6	RELAY
7	RELAY
8	RELAY
9	RELAY
10	RELAY
11	RELAY
12	RELAY
13	RELAY
14	RELAY
15	RELAY
16	RELAY
17	RELAY
18	RELAY

EQUIPMENT IDENTIFICATION		EQUIPMENT COMPARISON	
ITEM NO.	DESCRIPTION	ITEM NO.	DESCRIPTION
1	DECK	1	DECK
2	RELAY	2	RELAY
3	RELAY	3	RELAY
4	RELAY	4	RELAY
5	RELAY	5	RELAY
6	RELAY	6	RELAY
7	RELAY	7	RELAY
8	RELAY	8	RELAY
9	RELAY	9	RELAY
10	RELAY	10	RELAY
11	RELAY	11	RELAY
12	RELAY	12	RELAY
13	RELAY	13	RELAY
14	RELAY	14	RELAY
15	RELAY	15	RELAY
16	RELAY	16	RELAY
17	RELAY	17	RELAY
18	RELAY	18	RELAY

8
 1. This drawing is the property of the manufacturer and is not to be reproduced without written permission.
 2. This drawing is the property of the manufacturer and is not to be reproduced without written permission.
 3. This drawing is the property of the manufacturer and is not to be reproduced without written permission.
 4. This drawing is the property of the manufacturer and is not to be reproduced without written permission.
 5. This drawing is the property of the manufacturer and is not to be reproduced without written permission.
 6. This drawing is the property of the manufacturer and is not to be reproduced without written permission.
 7. This drawing is the property of the manufacturer and is not to be reproduced without written permission.
 8. This drawing is the property of the manufacturer and is not to be reproduced without written permission.

7

WIRE TABLE

ITEM NO.	DESCRIPTION	LENGTH INCHES	STRIP LENGTH X	STRIP LENGTH Y	CONNECTIONS FROM	CONNECTIONS TO
43	AWG COLOR	2 1/8	1/2	1/2	L1	TS-2
44	BLK	2 1/8	1/2	1/2	L1	TS-2
45	BLK	2 1/8	1/2	1/2	L1	TS-2
46	BLU	2 1/8	1/2	1/2	L1	TS-2
47	GRY	3 5/8	1/2	1/2	Q4-C	R24-T2
48	GRN	4 1/2	1/2	1/2	DS-ANODE	TS-1
49	WHT	5 7/8	1/2	1/2	SPLIT LAMP	R24-T1
50	GRY	4 7/8	1/2	1/2	Q4-E	Q4-B
51	WIO	5 1/8	1/2	1/2	Q4-C	Q4-B
52	BLU	5 7/8	1/2	1/2	Q4-C	Q4-B
53	GRN	5 1/2	1/2	1/2	SPLIT LAMP	TS-1
54	YEL	6 7/8	1/2	1/2	SPLIT LAMP	TS-2

5

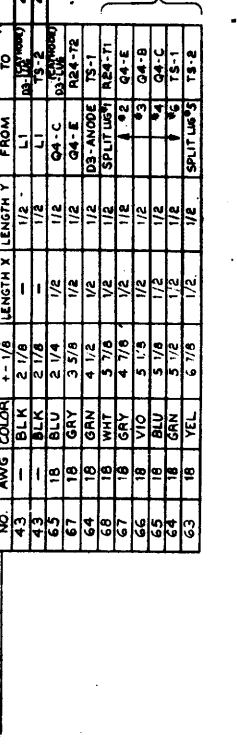
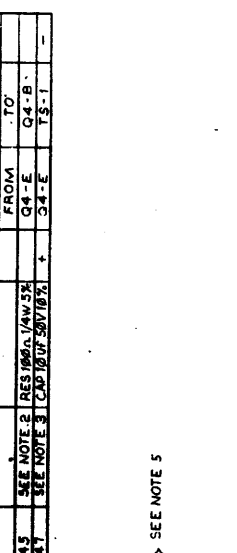
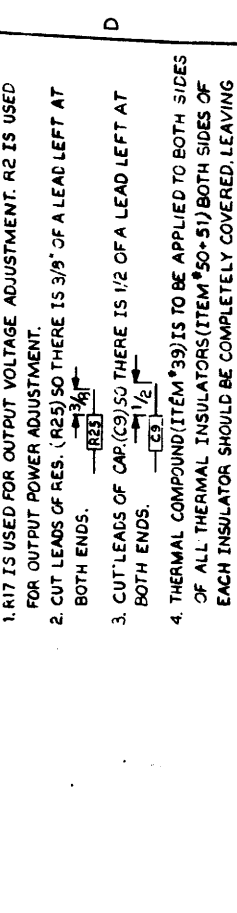
EXTERNAL COMPONENTS

ITEM NO.	LENGTH	DESCRIPTION	POL	CONNECTIONS FROM	CONNECTIONS TO
43	SEE NOTE 2	RES 100Ω 1/4W 5% Q4-E		Q4-E	Q4-B
44	SEE NOTE 3	CAP 100P 50V 10% Q4-E		Q4-E	TS-1

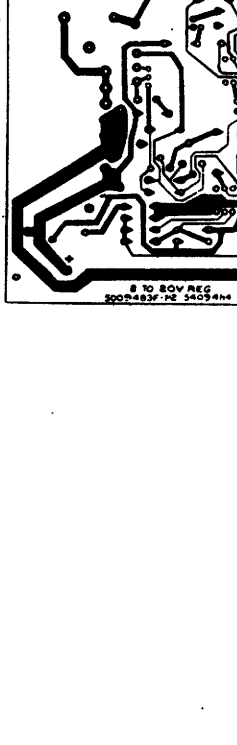
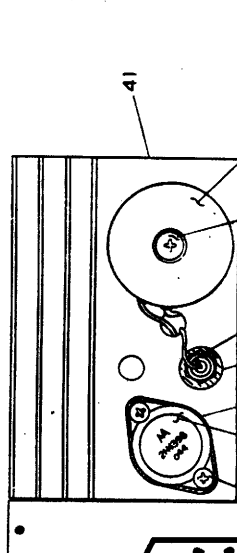
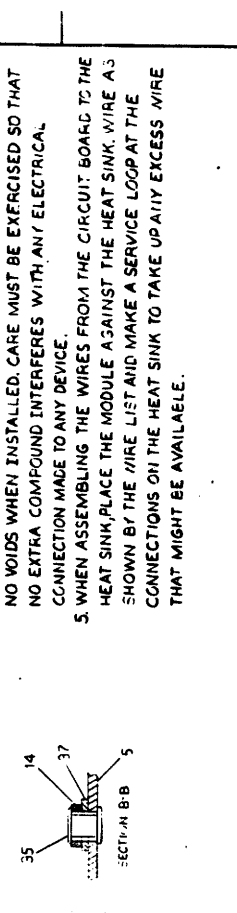
6

NOTES:

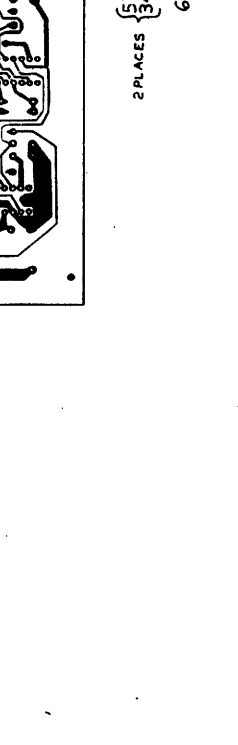
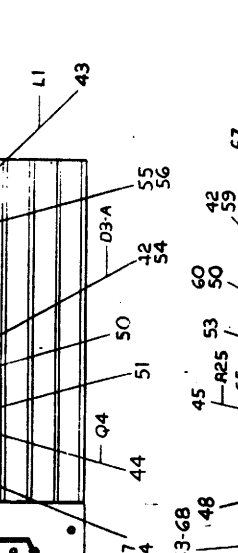
- R17 IS USED FOR OUTPUT VOLTAGE ADJUSTMENT. R2 IS USED FOR OUTPUT POWER ADJUSTMENT.
- CUT LEADS OF RES. (R25) SO THERE IS 3/8" OF A LEAD LEFT AT BOTH ENDS.
- CUT LEADS OF CAP. (C9) SO THERE IS 1/2 OF A LEAD LEFT AT BOTH ENDS.
- THERMAL COMPOUND (ITEM #39) IS TO BE APPLIED TO BOTH SIDES OF ALL THERMAL INSULATORS (ITEM #50 & #51) BOTH SIDES OF EACH INSULATOR SHOULD BE COMPLETELY COVERED LEAVING NO Voids WHEN INSTALLED. CARE MUST BE EXERCISED SO THAT NO EXTRA COMPOUND INTERFERES WITH ANY ELECTRICAL CONNECTION MADE TO ANY DEVICE.
- WHEN ASSEMBLING THE WIRES FROM THE CIRCUIT BOARD TO THE HEAT SINK, PLACE THE MODULE AGAINST THE HEAT SINK. WIRE AS SHOWN BY THE WIRE LIST AND MAKE A SERVICE LOOP AT THE CONNECTIONS ON THE HEAT SINK TO TAKE UP ANY EXCESS WIRE THAT MIGHT BE AVAILABLE.



SEE NOTE 5

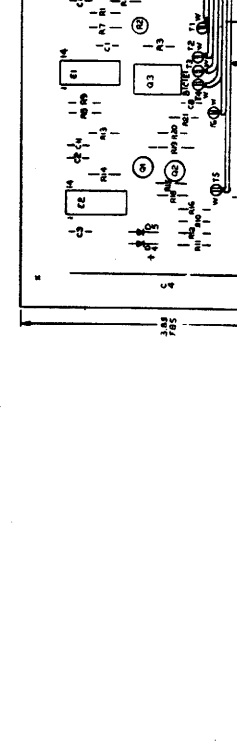
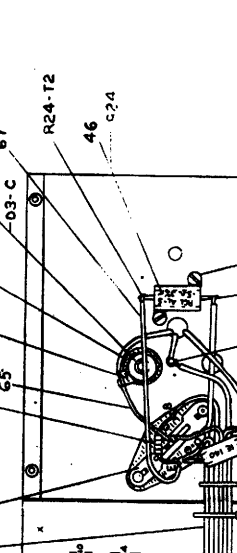


SEE SECTION U-B



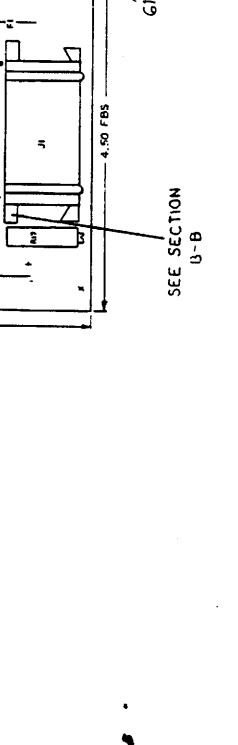
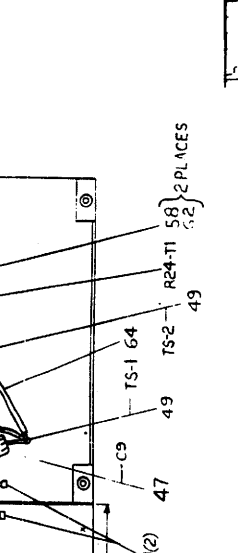
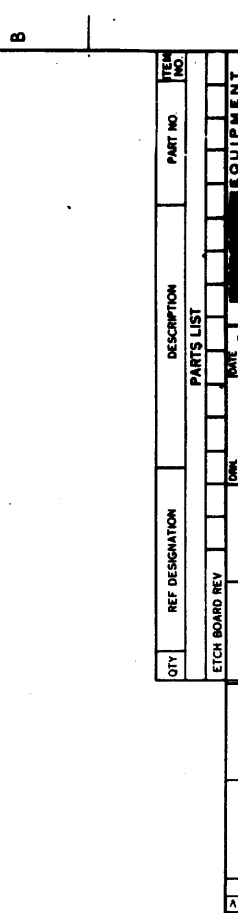
SEE SECTION U-B

SEE SECTION U-B



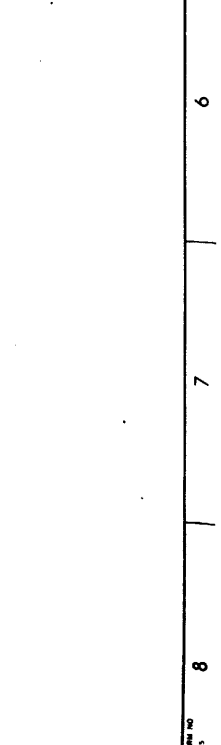
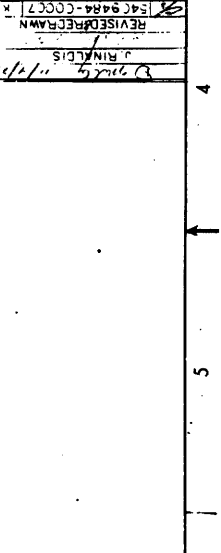
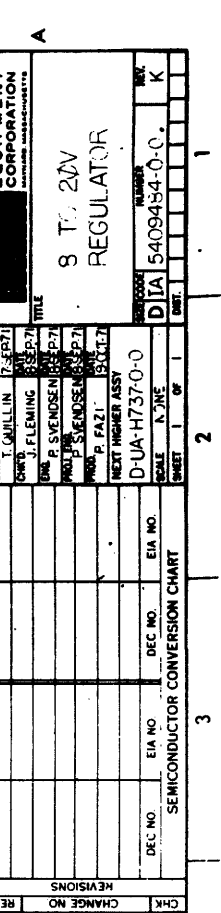
SEE SECTION U-B

SEE SECTION U-B



SEE SECTION U-B

SEE SECTION U-B



SEE SECTION U-B

SEE SECTION U-B

1
 2
 3
 4
 5
 6
 7
 8

1
 2
 3
 4
 5
 6
 7
 8

9
 10
 11
 12
 13
 14
 15
 16
 17
 18
 19
 20
 21
 22
 23
 24
 25
 26
 27
 28
 29
 30
 31
 32
 33
 34
 35
 36
 37
 38
 39
 40
 41
 42
 43
 44
 45
 46
 47
 48
 49
 50
 51
 52
 53
 54
 55
 56
 57
 58
 59
 60
 61
 62
 63
 64
 65
 66
 67
 68
 69
 70
 71
 72
 73
 74
 75
 76
 77
 78
 79
 80
 81
 82
 83
 84
 85
 86
 87
 88
 89
 90
 91
 92
 93
 94
 95
 96
 97
 98
 99
 100

101
 102
 103
 104
 105
 106
 107
 108
 109
 110
 111
 112
 113
 114
 115
 116
 117
 118
 119
 120
 121
 122
 123
 124
 125
 126
 127
 128
 129
 130
 131
 132
 133
 134
 135
 136
 137
 138
 139
 140
 141
 142
 143
 144
 145
 146
 147
 148
 149
 150
 151
 152
 153
 154
 155
 156
 157
 158
 159
 160
 161
 162
 163
 164
 165
 166
 167
 168
 169
 170
 171
 172
 173
 174
 175
 176
 177
 178
 179
 180
 181
 182
 183
 184
 185
 186
 187
 188
 189
 190
 191
 192
 193
 194
 195
 196
 197
 198
 199
 200

201
 202
 203
 204
 205
 206
 207
 208
 209
 210
 211
 212
 213
 214
 215
 216
 217
 218
 219
 220
 221
 222
 223
 224
 225
 226
 227
 228
 229
 230
 231
 232
 233
 234
 235
 236
 237
 238
 239
 240
 241
 242
 243
 244
 245
 246
 247
 248
 249
 250
 251
 252
 253
 254
 255
 256
 257
 258
 259
 260
 261
 262
 263
 264
 265
 266
 267
 268
 269
 270
 271
 272
 273
 274
 275
 276
 277
 278
 279
 280
 281
 282
 283
 284
 285
 286
 287
 288
 289
 290
 291
 292
 293
 294
 295
 296
 297
 298
 299
 300

301
 302
 303
 304
 305
 306
 307
 308
 309
 310
 311
 312
 313
 314
 315
 316
 317
 318
 319
 320
 321
 322
 323
 324
 325
 326
 327
 328
 329
 330
 331
 332
 333
 334
 335
 336
 337
 338
 339
 340
 341
 342
 343
 344
 345
 346
 347
 348
 349
 350
 351
 352
 353
 354
 355
 356
 357
 358
 359
 360
 361
 362
 363
 364
 365
 366
 367
 368
 369
 370
 371
 372
 373
 374
 375
 376
 377
 378
 379
 380
 381
 382
 383
 384
 385
 386
 387
 388
 389
 390
 391
 392
 393
 394
 395
 396
 397
 398
 399
 400

401
 402
 403
 404
 405
 406
 407
 408
 409
 410
 411
 412
 413
 414
 415
 416
 417
 418
 419
 420
 421
 422
 423
 424
 425
 426
 427
 428
 429
 430
 431
 432
 433
 434
 435
 436
 437
 438
 439
 440
 441
 442
 443
 444
 445
 446
 447
 448
 449
 450
 451
 452
 453
 454
 455
 456
 457
 458
 459
 460
 461
 462
 463
 464
 465
 466
 467
 468
 469
 470
 471
 472
 473
 474
 475
 476
 477
 478
 479
 480
 481
 482
 483
 484
 485
 486
 487
 488
 489
 490
 491
 492
 493
 494
 495
 496
 497
 498
 499
 500

501
 502
 503
 504
 505
 506
 507
 508
 509
 510
 511
 512
 513
 514
 515
 516
 517
 518
 519
 520
 521
 522
 523
 524
 525
 526
 527
 528
 529
 530
 531
 532
 533
 534
 535
 536
 537
 538
 539
 540
 541
 542
 543
 544
 545
 546
 547
 548
 549
 550
 551
 552
 553
 554
 555
 556
 557
 558
 559
 560
 561
 562
 563
 564
 565
 566
 567
 568
 569
 570
 571
 572
 573
 574
 575
 576
 577
 578
 579
 580
 581
 582
 583
 584
 585
 586
 587
 588
 589
 590
 591
 592
 593
 594
 595
 596
 597
 598
 599
 600

601
 602
 603
 604
 605
 606
 607
 608
 609
 610
 611
 612
 613
 614
 615
 616
 617
 618
 619
 620
 621
 622
 623
 624
 625
 626
 627
 628
 629
 630
 631
 632
 633
 634
 635
 636
 637
 638
 639
 640
 641
 642
 643
 644
 645
 646
 647
 648
 649
 650
 651
 652
 653
 654
 655
 656
 657
 658
 659
 660
 661
 662
 663
 664
 665
 666
 667
 668
 669
 670
 671
 672
 673
 674
 675
 676
 677
 678
 679
 680
 681
 682
 683
 684
 685
 686
 687
 688
 689
 690
 691
 692
 693
 694
 695
 696
 697
 698
 699
 700

701
 702
 703
 704
 705
 706
 707
 708
 709
 710
 711
 712
 713
 714
 715
 716
 717
 718
 719
 720
 721
 722
 723
 724
 725
 726
 727
 728
 729
 730
 731
 732
 733
 734
 735
 736
 737
 738
 739
 740
 741
 742
 743
 744
 745
 746
 747
 748
 749
 750
 751
 752
 753
 754
 755
 756
 757
 758
 759
 760
 761
 762
 763
 764
 765
 766
 767
 768
 769
 770
 771
 772
 773
 774
 775
 776
 777
 778
 779
 780
 781
 782
 783
 784
 785
 786
 787
 788
 789
 790
 791
 792
 793
 794
 795
 796
 797
 798
 799
 800

801
 802
 803
 804
 805
 806
 807
 808
 809
 810
 811
 812
 813
 814
 815
 816
 817
 818
 819
 820
 821
 822
 823
 824
 825
 826
 827
 828
 829
 830
 831
 832
 833
 834
 835
 836
 837
 838
 839
 840
 841
 842
 843
 844
 845
 846
 847
 848
 849
 850
 851
 852
 853
 854
 855
 856
 857
 858
 859
 860
 861
 862
 863
 864
 865
 866
 867
 868
 869
 870
 871
 872
 873
 874
 875
 876
 877
 878
 879
 880
 881
 882
 883
 884
 885
 886
 887
 888
 889
 890
 891
 892
 893
 894
 895
 896
 897
 898
 899
 900

901
 902
 903
 904
 905
 906
 907
 908
 909
 910
 911
 912
 913
 914
 915
 916
 917
 918
 919
 920
 921
 922
 923
 924
 925
 926
 927
 928
 929
 930
 931
 932
 933
 934
 935
 936
 937
 938
 939
 940
 941
 942
 943
 944
 945
 946
 947
 948
 949
 950
 951
 952
 953
 954
 955
 956
 957
 958
 959
 960
 961
 962
 963
 964
 965
 966
 967
 968
 969
 970
 971
 972
 973
 974
 975
 976
 977
 978
 979
 980
 981
 982
 983
 984
 985
 986
 987
 988
 989
 990

991
 992
 993
 994
 995
 996
 997
 998
 999
 1000

1001
 1002
 1003
 1004
 1005
 1006
 1007
 1008
 1009
 1010
 1011
 1012
 1013
 1014
 1015
 1016
 1017
 1018
 1019
 1020
 1021
 1022
 1023
 1024
 1025
 1026
 1027
 1028
 1029
 1030
 1031
 1032
 1033

RRK2,C RUN NAME	A/P	RRP28P.V34(62)-1 PIN NAME	ORDER PIN	31-Jul-75 PAY = ORDER	Q	ORAN	PV	RG	Y	X	Z	REMARKS	2-Jun-76	8156 NO FLAG	PAGE 1 LENGTH EXCEPTIONS	RUN NUMBER
+15VDC	H	A45D2		1-01 *							1				0-4/8	1
+15VDC	H	A46D1		1-02 *											0-4/8	1
+15VDC	H			1											0-4/8	1
+5VDC BULB	H	B26A1		1-01 *							1				0-4/8	2
+5VDC BUIA	H	A46A2		1-02 *											0-4/8	2
+5VDC BUIB	H			1											0-4/8	2
12A	H	A41A2		1-01 *							1				2-5/8	3
12A	H	B43A1		1-02 *											0-4/8	3
12A	H			1											2-5/8	3
AC LOW	H	A44R2		1-01 *							1				2-7/8	4
AC LOW	H	B47F1		1-02 *							2				1	4
AC LOW	H	B47F1		1-03 *											0-5/8	4
AC LOW	H			1											3-7/8	4
ADDR ACCEPTED	L	A42S1		1-01 *							1				1-2/8	5
ADDR ACCEPTED	L	A43N1		1-02 *											0-5/8	5
ADDR ACCEPTED	L			1											1-2/8	5
ADDRESS INVALID	L	B42F1		1-01 *							1				0-5/8	6
ADDRESS INVALID	L	B43E1		1-02 *											0-5/8	6
ADDRESS INVALID	L			1											0-5/8	6
BLOWER MTR RELAY DR	H	A44A1		1-01 *							1				5-5/8	7
BLOWER MTR RELAY DR	H	B46N1		1-02 *											0-5/8	7
BLOWER MTR RELAY DR	H			1											5-5/8	7
BUS ADDR ACCEPTED	L	A47R1		1-01 *							1				3-2/8	8
BUS ADDR ACCEPTED	L	A47R2		1-02 *							2				1	8
BUS ADDR ACCEPTED	L	A48R2		1-03 *											0-5/8	8
BUS ADDR ACCEPTED	L			1											4-2/8	8
BUS ADDR INVALID	L	A48T2		1-01 *							2				1	9
BUS ADDR INVALID	L	A47T2		1-02 *							1				0-1/8	9
BUS ADDR INVALID	L	B42A1		1-03 *											0-5/8	9
BUS ADDR INVALID	L			1											5-1/8	9
BUS FILE READY	L	A43M1		1-01 *							1				4-0/8	10
BUS FILE READY	L	B42N1		1-02 *							2				1	10
BUS FILE READY	L	B47N1		1-03 *											0-5/8	10
BUS FILE READY	L			1											5-0/8	10
BUS INDEX PUL	L	A47V1		1-01 *							1				0-0/8	11
BUS INDEX PUL	L	B48M1		1-02 *							2				1	11
BUS INDEX PUL	L	B47M1		1-03 *											0-5/8	11
BUS INDEX PUL	L			1											5-0/8	11
BUS P/ALS READY	L	A42M1		1-01 *							1				3-5/8	12
BUS P/ALS READY	L	B47H2		1-02 *							2				1	12
BUS P/ALS READY	L	A44H2		1-03 *											0-5/8	12
BUS P/ALS READY	L			1											4-5/8	12

RRK2,C RUN NAME	A/P	RRP28P.V34(62)-1 PIN NAME	ORDER PIN	31-Jul-75 PAY = ORDER	Q	ORAN	PV	RG	Y	X	Z	REMARKS	2-Jun-76	8156 NO FLAG	PAGE 2 LENGTH EXCEPTIONS	RUN NUMBER
BUS SECTOR ADDR	L	A42M1		1-01 *							1				4-7/8	13
BUS SECTOR ADDR	L	B48M1		1-02 *							2				1	13
BUS SECTOR ADDR	L	B47M1		1-03 *											0-5/8	13
BUS SECTOR ADDR	L			1											5-7/8	13
BUS SECTOR ADDR 1	L	A42J1		1-01 *							1				3-5/8	14
BUS SECTOR ADDR 1	L	A47P2		1-02 *							2				1	14
BUS SECTOR ADDR 1	L	A48P2		1-03 *											0-5/8	14
BUS SECTOR ADDR 1	L			1											4-5/8	14
BUS SECTOR ADDR 2	L	B42L1		1-01 *							1				4-1/8	15
BUS SECTOR ADDR 2	L	B47M2		1-02 *							2				1	15
BUS SECTOR ADDR 2	L	B48M2		1-03 *											0-5/8	15
BUS SECTOR ADDR 2	L			1											5-1/8	15
BUS SECTOR ADDR 3	L	A47P1		1-01 *							1				4-1/8	16
BUS SECTOR ADDR 3	L	B47J1		1-02 *							2				1	16
BUS SECTOR ADDR 3	L	B48J1		1-03 *											0-5/8	16
BUS SECTOR ADDR 3	L			1											5-1/8	16
BUS SECTOR PULSE	L	A42F1		1-01 *							1				5-2/8	17
BUS SECTOR PULSE	L	B48N2		1-02 *							2				1	17
BUS SECTOR PULSE	L	B47N2		1-03 *											0-5/8	17
BUS SECTOR PULSE	L			1											0-2/8	17
BUS SR PROTECT STATUS	H	A43M1		1-01 *							1				2-3/8	18
BUS SR PROTECT STATUS	H	B47P1		1-02 *							2				1	18
BUS SR PROTECT STATUS	H	B48P1		1-03 *											0-5/8	18
BUS SR PROTECT STATUS	H			1											3-3/8	18
BUS WRITE CK	H	B44P1		1-01 *							1				2-3/8	19
BUS WRITE CK	H	B47M1		1-02 *							2				1	19
BUS WRITE CK	H	B48M1		1-03 *											0-5/8	19
BUS WRITE CK	H			1											3-3/8	19
COS POSITION	H	A45U1		1-01 *							1				1-5/8	21
COS POSITION	H	B46M1		1-02 *											0-5/8	21
COS POSITION	H			1											1-5/8	21
COUNT PULSE FWD	H	A45A1		1-01 *							1				5-1/8	22
COUNT PULSE FWD	H	B47M1		1-02 *											0-5/8	22
COUNT PULSE FWD	H			1											5-1/8	22
COUNT PULSE REV	H	A45C1		1-01 *							1				0-3/8	23
COUNT PULSE REV	H	B43F1		1-02 *											0-5/8	23
COUNT PULSE REV	H			1											0-3/8	23
CYC ADDR 1	L	A47M1		1-01 *							2				1	24
CYC ADDR 1	L	B48M1		1-02 *											0-0/8	24
CYC ADDR 1	L	A48M1		1-03 *											0-5/8	24
CYC ADDR 1	L			1											5-0/8	24

PKPS,C RUN NAME	A/P	APP288.V34(62)-1 PIN NAME	ORDER PIN	31-JUL-75 RAY = ORDER	Q	DPAW OPT	RV RG Y	X	Z	REMARKS	2-JUN-76	8156 NC FLAG	PAGE 9 LENGTH EXCEPTIONS	RUN NUMBER
SELECT 3	L	A08L2		1-01 *			D05-3		2					91
SELECT 3	L	A07L2		1-02 *			D05-3		1			1		91
SELECT 3	L	A02T2		1-03 *			D05-3					5-7/8		91
SELECT 3	L			1								6-7/8		91
SELECT 4	L	A08M2		1-01 *			D05-3		2			1		92
SELECT 4	L	A07M2		1-02 *			D05-3		1			5		92
SELECT 4	L	A02H2		1-03 *			D05-3					6-8/8		92
SELECT 4	L			1										92
SELECT/READY	L	A01H2		1-01 *			D05-1		1			2-3/8		93
SELECT/READY	L	A04V1		1-02 *					2			2-2/8		93
SELECT/READY	L	A02H1		1-03 *			D05-1							93
SELECT/READY	L			1								4-5/8		93
SELECTED READ GATE	H	A01R1		1-01 *			D05-9		1			1-3/8		94
SELECTED READ GATE	H	A02F2		1-02 *			D05-9					1-3/8		94
SELECTED READ GATE	H			1										94
SELECTED WRITE GATE	H	A01V1		1-01 *			D05-1		1			1-2/8		95
SELECTED WRITE GATE	H	A02V2		1-02 *			D05-1					1-2/8		95
SELECTED WRITE GATE	H			1										95
SET UNSAFE	L	A01U2		1-01 *			D05-1		1			2-2/8		96
SET UNSAFE	L	A04A1		1-02 *			D05-1							96
SET UNSAFE	L			1								2-2/8		96
SIN POSITION	H	A05M1		1-01 *			D05-9		1			2-5/8		97
SIN POSITION	H	A06M1		1-02 *			D05-9							97
SIN POSITION	H			1								2-5/8		97
STROBE	L	A02V1		1-01 *			D05-2		1			4-1/8		98
STROBE	L	A07H1		1-02 *			D05-2		2			1		98
STROBE	L	A08H1		1-03 *			D05-2							98
STROBE	L			1								5-1/8		98
UNSAFE	L	A01L2		1-01 *			D05-1		1			2-5/8		99
UNSAFE	L	A04V2		1-02 *			D05-1							99
UNSAFE	L			1								2-5/8		99
WRITE DATA + CLK	H	A01J1		1-01 *			D05-1		1			3-7/8		100
WRITE DATA + CLK	H	A07F2		1-02 *			D05-1		2			1		100
WRITE DATA + CLK	H	A08F2		1-03 *			D05-1							100
WRITE DATA + CLK	H			1								4-7/8		100
WRITE GATE	L	A01J2		1-01 *			D05-1		1			4-6/8		101
WRITE GATE	L	A07L2		1-02 *			D05-1		2			1		101
WRITE GATE	L	A08L2		1-03 *			D05-1							101
WRITE GATE	L			1								5-6/8		101
WRITE PROTECT SET	L	A02S1		1-01 *			D05-3		1			3-3/8		102
WRITE PROTECT SET	L	A07R2		1-02 *			D05-3		2			1		102
WRITE PROTECT SET	L	A08R2		1-03 *			D05-3							102
WRITE PROTECT SET	L			1								4-3/8		102

PKPS,C RUN NAME	A/P	APP288.V34(62)-1 PIN NAME	ORDER PIN	31-JUL-75 RAY = ORDER	Q	DPAW OPT	RV RG Y	X	Z	REMARKS	2-JUN-76	8156 NC FLAG	PAGE 10 LENGTH EXCEPTIONS	RUN NUMBER
WRITE SA OFF	L	A06M1		1-01 *			D05-7		1				3-3/8	103
WRITE SA OFF	L	A04F1		1-02 *			D05-7						3-3/8	103
WRITE SA OFF	L			1										103
WRITE SA ON	L	A06M1		1-01 *			D05-7		1				3-3/8	104
WRITE SA ON	L	A04F1		1-02 *			D05-7							104
WRITE SA ON	L			1									3-3/8	104
WRITING IND	H	A02U1		1-01 *			D05-5		1				3-2/8	105
WRITING IND	H	A06F1		1-02 *			D05-5							105
WRITING IND	H			1									3-2/8	105

PP25.C RUN NAME	A/P	PT NAME	ORDER PIN	31-JUL-75 RAY = ORDER	Q	DRAW OPT	PV	RG	Y	X	Z	REMARKS	2-Jun-76	DISC FLAG	PAGE 5 LENGTH EXCEPTIONS	RUN NUMBER
GND 06		A16C2		1-21 *							1				2-1/8	47
GND 06		A06T1		1-22 *							2				1-5/8	47
GND 06		A06C2		1-23 *							1				0-1/8	47
GND 06		A06C1		1-24 *							2				0-4/8	47
GND 06		A06E1		1-25 *							1				0-5/8	47
GND 06		A06T1		1-26 *							2				1-4/8	47
GND 06		A06T1		1-27 *							1				0-1/8	47
GND 06		A06S1		1-28 *											0-3/8	47
GND 06				1											7-0/8	47
GND 07		A07R2		1-29 *							1				0-1/8	48
GND 07		A07C2		1-30 *							2				1-5/8	48
GND 07		A07N1		1-31 *							1				0-1/8	48
GND 07		A07P1		1-32 *							2				0-1/8	48
GND 07		A07R1		1-33 *							1				0-1/8	48
GND 07		A07S1		1-34 *							2				0-1/8	48
GND 07		A07T1		1-35 *							1				0-4/8	48
GND 07		A07V1		1-36 *							2				1-3/8	48
GND 07		A07R2		1-37 *							1				0-1/8	48
GND 07		A07C2		1-38 *							2				0-1/8	48
GND 07		A07D1		1-39 *							1				0-1/8	48
GND 07		A07E1		1-40 *							2				1-7/8	48
GND 07		A07T1		1-41 *							1				0-4/8	48
GND 07		A07V2		1-42 *											6-7/8	48
GND 08		A08R2		1-43 *							1				0-1/8	49
GND 08		A08C2		1-44 *							2				1-5/8	49
GND 08		A08N1		1-45 *							1				0-1/8	49
GND 08		A08P1		1-46 *							2				0-1/8	49
GND 08		A08R1		1-47 *							1				0-1/8	49
GND 08		A08S1		1-48 *							2				0-1/8	49
GND 08		A08T1		1-49 *							1				0-4/8	49
GND 08		A08V1		1-50 *							2				1-3/8	49
GND 08		A08R2		1-51 *							1				0-1/8	49
GND 08		A08C2		1-52 *							2				0-1/8	49
GND 08		A08D1		1-53 *							1				0-1/8	49
GND 08		A08E1		1-54 *							2				1-7/8	49
GND 08		A08T1		1-55 *							1				0-4/8	49
GND 08		A08V2		1-56 *											6-7/8	49
GND 09				1											6-7/8	49
GOOD STROBE	L	A02F1		1-57 *							1				1-1/8	50
GOOD STROBE	L	A02D1		1-58 *											0-3/8	50
GOOD STROBE	L			1											1-1/8	50
HEAD SELECT	L	A01P1		1-59 *							1				5-2/8	51
HEAD SELECT	L	A07M2		1-60 *							2				1	51
HEAD SELECT	L	A08M2		1-61 *											0-2/8	51
HEAD SELECT	L			1											6-2/8	51
HIGH DENSITY	L	A01P2		1-62 *							1				4-3/8	52
HIGH DENSITY	L	A07P2		1-63 *							2				1	52
HIGH DENSITY	L	A06P2		1-64 *											0-2/8	52
HIGH DENSITY	L			1											5-3/8	52

PP25.C RUN NAME	A/P	PT NAME	ORDER PIN	31-JUL-75 RAY = ORDER	Q	DRAW OPT	PV	RG	Y	X	Z	REMARKS	2-Jun-76	DISC FLAG	PAGE 6 LENGTH EXCEPTIONS	RUN NUMBER
HOME	L	A04R1		1-65 *							2				2-1/8	53
HOME	L	A03R1		1-66 *							1				2-3/8	53
HOME	L	A06F1		1-67 *											0-5/8	53
HOME	L			1											1-4/8	53
INDEX PULSE	L	A02F2		1-68 *							1				1-4/8	54
INDEX PULSE	L	A04J1		1-69 *											0-2/8	54
INDEX PULSE	L			1											1-4/8	54
INDEX/SECTOR	L	A02D1		1-70 *							1				1-7/8	55
INDEX/SECTOR	L	A04H2		1-71 *											0-2/8	55
INDEX/SECTOR	L			1											1-7/8	55
INNER LIMIT	H	A05R1		1-72 *							1				3-3/8	56
INNER LIMIT	H	A03U1		1-73 *							2				2-3/8	56
INNER LIMIT	H	A02J1		1-74 *											0-0/8	56
INNER LIMIT	H			1											5-0/8	56
INTERLOCK	L	A04H1		1-75 *							1				1-7/8	57
INTERLOCK	L	A06P1		1-76 *											0-2/8	57
INTERLOCK	L			1											1-7/8	57
LIMIT	H	A05R1		1-77 *							1				3-3/8	58
LIMIT	H	A03U1		1-78 *											0-2/8	58
LIMIT	H			1											3-3/8	58
LOAD HEADS	L	A03C1		1-79 *							1				1	59
LOAD HEADS	L	A04C1		1-80 *											0-2/8	59
LOAD HEADS	L			1											1-2/8	59
LOAD IND	H	A03T1		1-81 *							1				1-7/8	60
LOAD IND	H	A04T1		1-82 *											0-2/8	60
LOAD IND	H			1											1-7/8	60
LOAD SW	L	A06F1		1-83 *							1				3-3/8	61
LOAD SW	L	A04D1		1-84 *											0-2/8	61
LOAD SW	L			1											3-3/8	61
MOVE	L	A03T1		1-85 *							1				4-1/8	62
MOVE	L	A02P1		1-86 *											0-2/8	62
MOVE	L			1											4-1/8	62
NO PROTECT	L	A01N2		1-87 *							1				3-5/8	63
NO PROTECT	L	A04H1		1-88 *											0-2/8	63
NO PROTECT	L			1											3-5/8	63
ODD DRIVE	L	A02J2		1-89 *							1				3-3/8	64
ODD DRIVE	L	A03F2		1-90 *											0-2/8	64
ODD DRIVE	L			1											3-3/8	64
ON	L	A02A1		1-91 *							1				2-1/8	65
ON	L	A03M1		1-92 *											0-2/8	65
ON	L			1											2-1/8	65