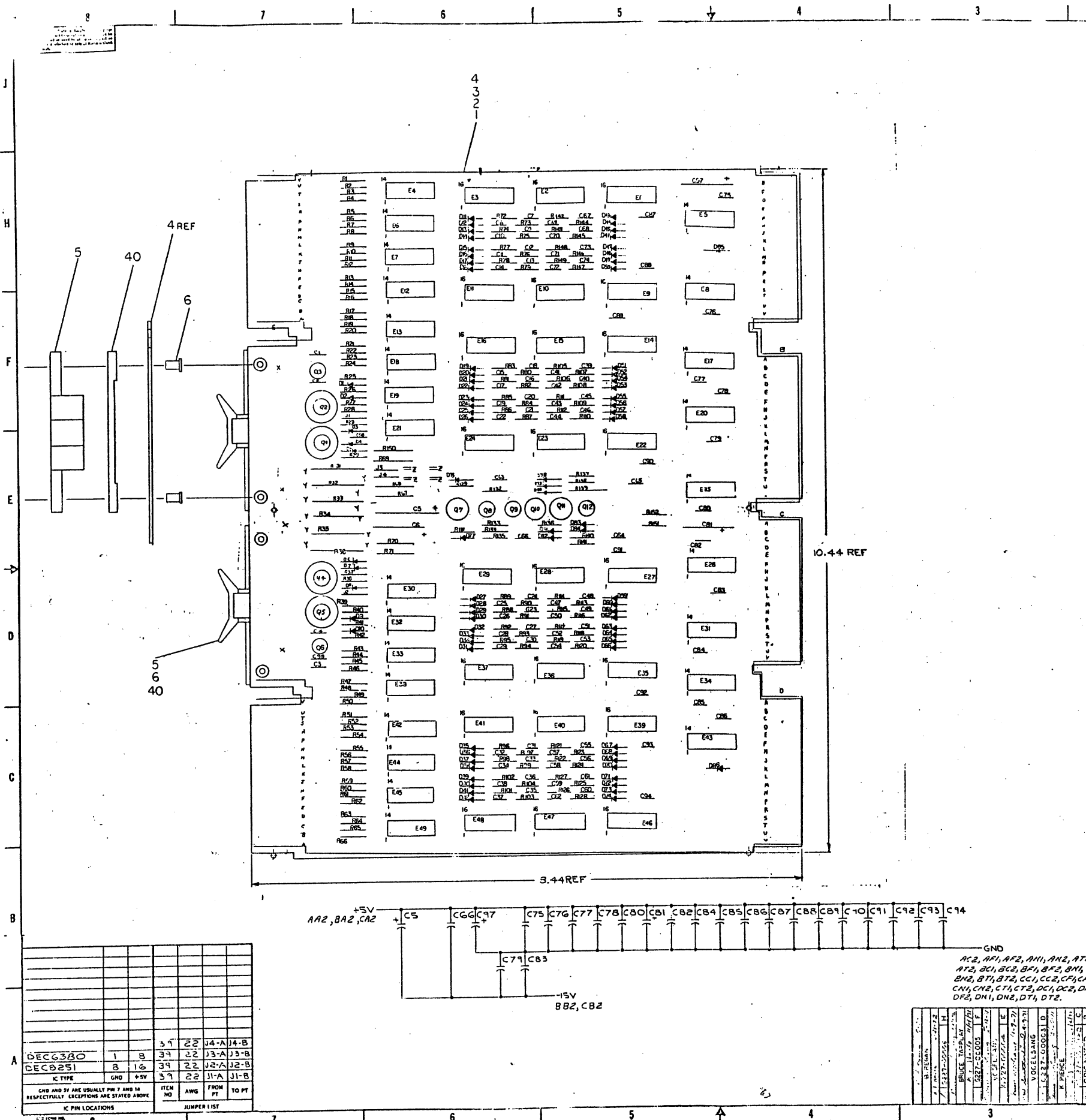


TITLE	SIZE CODE	NUMBER	REV
MEMORY	B DD	MM8-E	B
SHEET 2 OF 3			

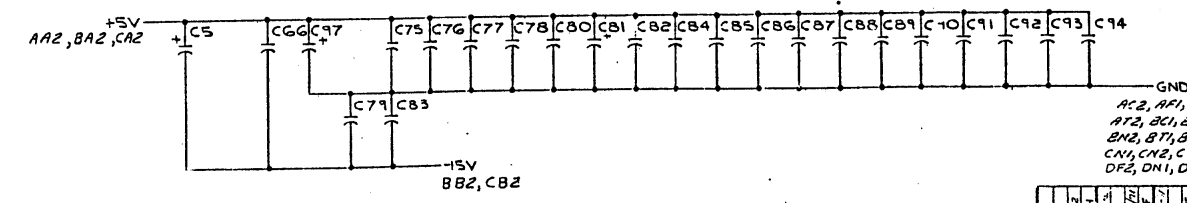
CUSTOMER PRINT SET				ELECTRICAL					CUSTOMER PRINT SET				MECHANICAL						
MM8-1	MM8-2	MM8-3	MFG. SET	FIND NO.	DRAWING NO.	REV	NO OF SHT	DESCRIPTION	OPTION NO.	MM8-1	MM8-2	MM8-3	MFG. SET	FIND NO.	DRAWING NO.	REV	NO OF SHT	DESCRIPTION	OPTION NO.
X				1	E-BD-MM8-E-1		1	BLOCK DIAGRAM TIMING		X				1	D-UA-MM8-E-0		1	4K 12 BIT MEMORY	
			X		A-SP-MM8-EJ-3	A	21	MM8-EJ&MM8-EH TEST PROCEDURE (OFFLINE)		X					A-PL-MM8-E-0		1	4K 12 BIT MEMORY (PL)	
	X	X			E-BD-MM8-EJ-5	A	1	BLOCK DIAGRAM TIMING			X				D-UA-MM8-EJ-0	B	1	8K 12 BIT MEMORY	
										X	X				D-UA-MM8-EH-0		1	4K 12 BIT MEMORY	
													X		A-SP-7665139-0-0	#	4	ACCEPTANCE PROC	
											X	X			A-SP-MM8-E-2			MANUFACTURING PROC.	
													X		A-SP-MM8-EJ-1	A	5	MM8-EJ&MM8-EH ACCEPTANCE PROCEDURE	
													X		A-SP-MM8-EJ-2	A	4	MM8-EJ&MM8-EH MANUFACTURING PROC.(F.S.)	
X				2	E-CS-H212-0-1	#	2	STACK SCHEMATIC 8K X 12 BIT		X	X	X			A-AL-MM8-E-3	A	1	ACCESSORY SHIPPING LIST	
	X				E-CS-H211-0-1	#	2	STACK SCHEMATIC 4K X 12 BIT			X	X			A-SP-MM8-EJ-4			ENGINEERING SPECIFICATION	
X				3	E-CS-G619-0-1	#	2	PLANAR STACK SCHEMATIC		X				2	B-0D-H212-0		2	STACK 8K 12 BIT	
	X	X			D-CS-G646-0-1	#	1	12 BIT STACK BOARD							D-UA-H220-0-0	#	2	STACK 4K 12 BIT	
X				4	E-CS-G227-0-1	#	2	4K XY DRIVER BOARD					X	3	A-PS-3010654-0-0	#		PURCHASE SPEC	
	X				E-CS-G233-0-1	#	5	8K XY DRIVER BOARD					X		A-PS-3009834-0-0	#		PURCHASE SPEC	
	X	X			E-CS-G234-0-1	#	5	4K or 8K DRIVER BOARD							C-MD-5509025-0-0		1	COVER PLATE	
X				5	E-CS-G104-0-1	#	2	SENSE INHIBIT						6	B-UA-H851-0-0			EDGE CONNECTOR	
	X				E-CS-G111-0-1	#	3	8K SENSE INHIBIT BOARD							A-PL-H851-0-0			EDGE CONNECTOR PL	
	X	X			E-CS-G115-0-1	#	3	4K or 8K SENSE INHIBIT BOARD							B-MD-5509071-1-0			RECEP 36 PIN REWORK	
															D-1A-5008903-0-0			ETCH BOARD	

TITLE	SIZE	CODE	NUMBER	REV
MEMORY	B	DD	MM8-E	B
SHEET 3 OF 3				



QTY.	REF DESIGNATION	DESCRIPTION	PART NO.	ITEM NO.
4	R1, R3, R5, R7, R9, R12, R14, R15, R22, R24, R26, R29, R30, R31, R34, R36	SPLIT LUGS	9006735	48
16	R2, R4, R6, R8, R10, R11, R13, R16, R18, R20, R21, R23, R25, R27, R28, R32, R33, R35, R37, R38, R41	RES. 180 1/4W 5%	1301322	47
20	R17, R19, R24, R25, R28, R39, R42	RES. 330 1/4W 5%	1300295	46
66	C2, C3, C7, C62, C67, C74	CAP. 580 PF, 100V, 5% MICA	1000026	45
7		HEAT SINK	1210001	44
1	R40	RES. 48 1/4W, 5%	1300219	43
1	R39	RES. 470 1/2W, 5%	1300319	42
4	R25, R28, R39, R42	RES. 680 1/4W, 5%	1301224	41
2		SPACER (CABLE CLAMP)	1302704	40
1		WEE #22 AWG STRIP TER INS	0733035	39
8	E1, E9, E14, E22, E27, E35, E39, E46	I.C. DEC 8251	1909594	38
4	E5, E20, E26, E43	I.C. DEC 6380	1909971	37
1	E25	I.C. DEC 74111	1909267	36
4	E8, E17, E31, E34	I.C. DEC 74110	1909057	35
16	E15, E16, E23, E24, E28, E29, E36, E37, E40, E41, E47, E48	PULSE TRANSFORMER	1609651	34
16	E4, E6, E7, E12, E13, E18, E19, E21, E30, E32, E33, E38, E42, E44, E45, E49	TRANSISTOR DEC4008	1510015	33
4	Q1, Q2, Q4, Q5	TRANSISTOR DEC 3762	1509649	32
2	Q3, Q6	TRANSISTOR DEC 4258	1503381	31
2	Q8, Q12	TRANSISTOR DEC 6534	1503400	30
1	Q9	TRANSISTOR DEC 1008	1501100	29
4	R7, Q10, Q11	TRANSISTOR DEC 1008	1502155	28
1	R3, R35	RES. 12.4 1/2W, 5% MFLUOR.	1310032	27
1	R67	RES. 348K, 1/8W, 1% MF	1303156	26
1	R68	RES. 14.7K, 1/8W, 1% MF	1302941	25
6	R26, 27, 40, 41, 43, 45	RES. 4.7K, 1/4W, 5%	1300447	24
1	R27	RES. 3.3K, 1/4W, 5%	1300444	23
5	R24, R30, R31	RES. 15K, 1/4W, 5%	1300391	22
2	R31, R36	RES. 750, 1W, 5%	1302385	21
1	R32, R33, R34, R36, R37, R38, R39, R41	RES. 330 1/4W, 5%	1300295	20
1	R15	RES. 220, 1/4W, 5%	1300271	19
81	R13, R14, R15, R16, R17, R18, R19, R20, R21, R22, R23, R24, R25, R26, R27, R28, R29, R30, R31, R32, R33, R34, R35, R36, R37, R38, R39, R40, R41, R42, R43, R44, R45, R46, R47, R48, R49, R50, R51, R52, R53, R54, R55, R56	RES. 150, 1/4W, 5%	1300250	18
3	R13, R16, R17	RES. 100, 1/4W, 5%	1300229	17
4	R6, 9, R71, R150	RES. 10, 1/2W, 5%	1300168	16
9	D1, D3, D6, D10, D17, D31, D71, D81	DIODE D672	1105275	15
76	D4, D7, D11, D71	DIODE D664	1100114	14
1	C5	CAP. 20UF, 50V, 10% D15C	1002839	13
22	C64, C66, C75, C80, C82, C94	CAP. 01UF, 100V, 20% D15C	1001610	12
3	C6, C81, C97	CAP. 5UF, 10V, 10% TANI	1000076	11
3	C65, C98, C99	CAP. 047UF, 16V, 20% D15C	1004678	10
1	C63	CAP. 300PF, 50V, 10% D15C	1000025	9
1	C67	CAP. 20PF, 100V, 20% D15C	1000032	8
2	C1, C4	CAP. 39PF, 100V, 5% D.M.	1000010	7
2		EYELET - G5471 STIMPSON	1006730	6
2		HANDLE FLIP CHIP GREEN	100337-01	5
2		ETCHED CIRCUIT BOARD	1005832	4
2		MODULE HISTORY LIST	1006227-01	3
2		ASY/DRILLING HOLE LAYOUT	1006227-01	2
2		KIT COORDINATE FILE LOC	1006227-01	1

ITEM NO.	AWG	FROM PT	TO PT
39	22	J4-A	J4-B
37	22	J3-A	J3-B
34	22	J2-A	J2-B
37	22	J1-A	J1-B

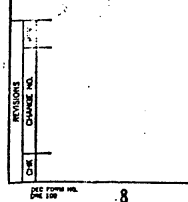
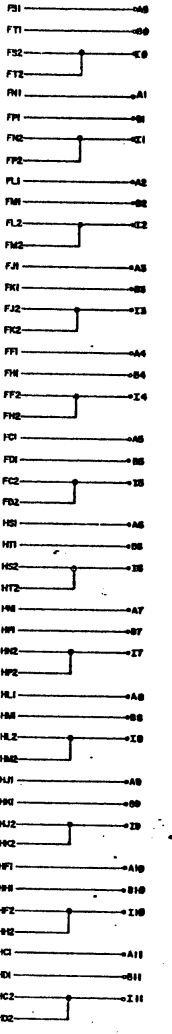
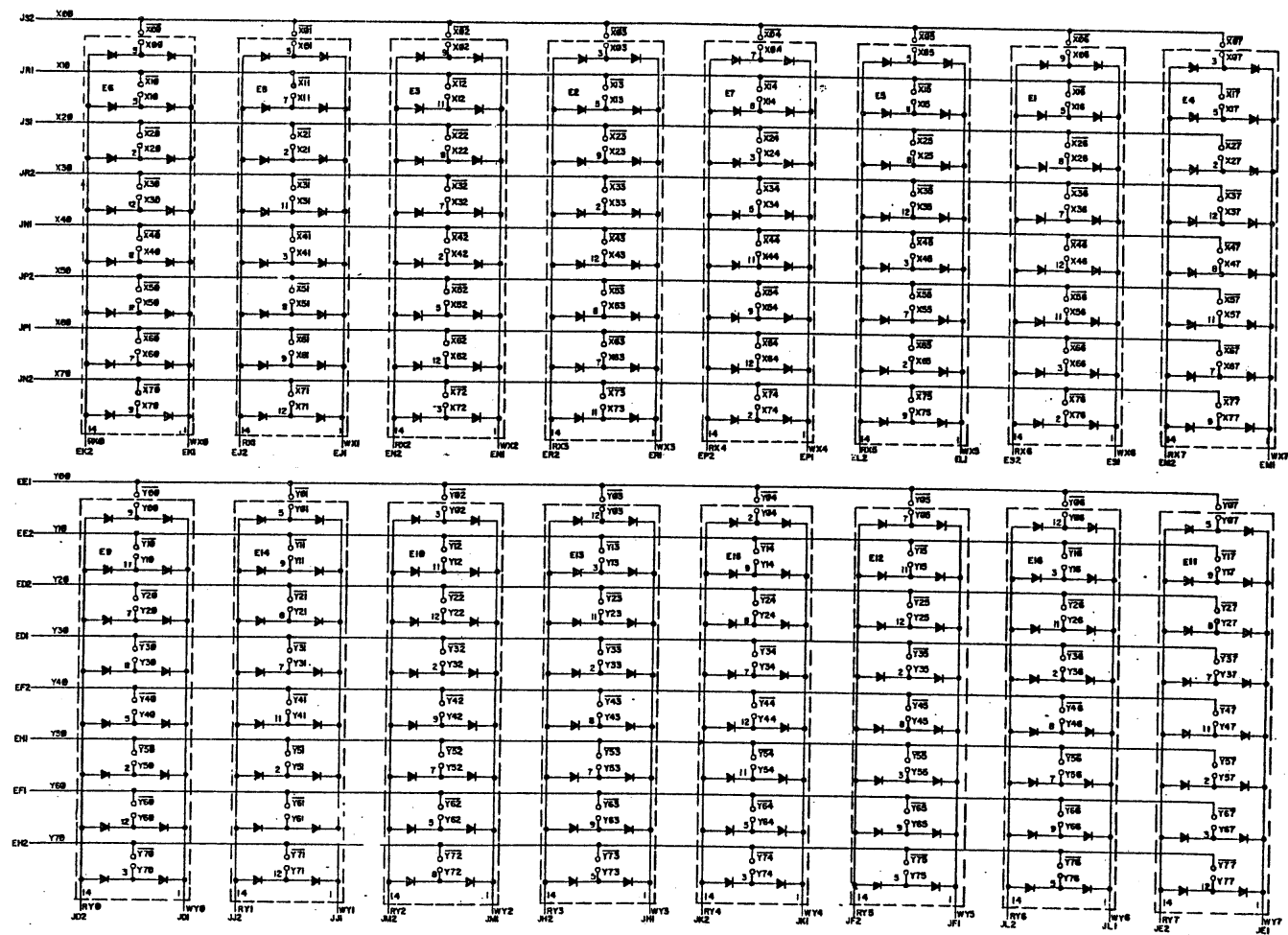
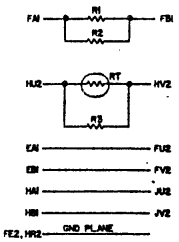


AC2, AF1, AF2, AH1, AN2, AT1, AT2, BC1, BC2, BF1, BF2, BN1, BN2, BT1, BT2, CC1, CC2, CF1, CF2, CN1, CN2, CT1, CT2, DC1, DC2, DF1, DF2, DN1, DN2, DT1, DT2.

REV	DATE	BY	CHKD	DESCRIPTION
1	11-15-71	BRUCE TASHMAN		INITIAL DESIGN
2	11-17-71	BRUCE TASHMAN		REVISED FOR MANUFACTURE
3	11-17-71	BRUCE TASHMAN		REVISED FOR MANUFACTURE
4	11-17-71	BRUCE TASHMAN		REVISED FOR MANUFACTURE
5	11-17-71	BRUCE TASHMAN		REVISED FOR MANUFACTURE
6	11-17-71	BRUCE TASHMAN		REVISED FOR MANUFACTURE
7	11-17-71	BRUCE TASHMAN		REVISED FOR MANUFACTURE
8	11-17-71	BRUCE TASHMAN		REVISED FOR MANUFACTURE
9	11-17-71	BRUCE TASHMAN		REVISED FOR MANUFACTURE
10	11-17-71	BRUCE TASHMAN		REVISED FOR MANUFACTURE
11	11-17-71	BRUCE TASHMAN		REVISED FOR MANUFACTURE
12	11-17-71	BRUCE TASHMAN		REVISED FOR MANUFACTURE
13	11-17-71	BRUCE TASHMAN		REVISED FOR MANUFACTURE
14	11-17-71	BRUCE TASHMAN		REVISED FOR MANUFACTURE
15	11-17-71	BRUCE TASHMAN		REVISED FOR MANUFACTURE
16	11-17-71	BRUCE TASHMAN		REVISED FOR MANUFACTURE
17	11-17-71	BRUCE TASHMAN		REVISED FOR MANUFACTURE
18	11-17-71	BRUCE TASHMAN		REVISED FOR MANUFACTURE
19	11-17-71	BRUCE TASHMAN		REVISED FOR MANUFACTURE
20	11-17-71	BRUCE TASHMAN		REVISED FOR MANUFACTURE
21	11-17-71	BRUCE TASHMAN		REVISED FOR MANUFACTURE
22	11-17-71	BRUCE TASHMAN		REVISED FOR MANUFACTURE
23	11-17-71	BRUCE TASHMAN		REVISED FOR MANUFACTURE
24	11-17-71	BRUCE TASHMAN		REVISED FOR MANUFACTURE
25	11-17-71	BRUCE TASHMAN		REVISED FOR MANUFACTURE
26	11-17-71	BRUCE TASHMAN		REVISED FOR MANUFACTURE
27	11-17-71	BRUCE TASHMAN		REVISED FOR MANUFACTURE
28	11-17-71	BRUCE TASHMAN		REVISED FOR MANUFACTURE
29	11-17-71	BRUCE TASHMAN		REVISED FOR MANUFACTURE
30	11-17-71	BRUCE TASHMAN		REVISED FOR MANUFACTURE
31	11-17-71	BRUCE TASHMAN		REVISED FOR MANUFACTURE
32	11-17-71	BRUCE TASHMAN		REVISED FOR MANUFACTURE
33	11-17-71	BRUCE TASHMAN		REVISED FOR MANUFACTURE
34	11-17-71	BRUCE TASHMAN		REVISED FOR MANUFACTURE
35	11-17-71	BRUCE TASHMAN		REVISED FOR MANUFACTURE
36	11-17-71	BRUCE TASHMAN		REVISED FOR MANUFACTURE
37	11-17-71	BRUCE TASHMAN		REVISED FOR MANUFACTURE
38	11-17-71	BRUCE TASHMAN		REVISED FOR MANUFACTURE
39	11-17-71	BRUCE TASHMAN		REVISED FOR MANUFACTURE
40	11-17-71	BRUCE TASHMAN		REVISED FOR MANUFACTURE
41	11-17-71	BRUCE TASHMAN		REVISED FOR MANUFACTURE
42	11-17-71	BRUCE TASHMAN		REVISED FOR MANUFACTURE
43	11-17-71	BRUCE TASHMAN		REVISED FOR MANUFACTURE
44	11-17-71	BRUCE TASHMAN		REVISED FOR MANUFACTURE
45	11-17-71	BRUCE TASHMAN		REVISED FOR MANUFACTURE
46	11-17-71	BRUCE TASHMAN		REVISED FOR MANUFACTURE
47	11-17-71	BRUCE TASHMAN		REVISED FOR MANUFACTURE
48	11-17-71	BRUCE TASHMAN		REVISED FOR MANUFACTURE
49	11-17-71	BRUCE TASHMAN		REVISED FOR MANUFACTURE
50	11-17-71	BRUCE TASHMAN		REVISED FOR MANUFACTURE
51	11-17-71	BRUCE TASHMAN		REVISED FOR MANUFACTURE
52	11-17-71	BRUCE TASHMAN		REVISED FOR MANUFACTURE
53	11-17-71	BRUCE TASHMAN		REVISED FOR MANUFACTURE
54	11-17-71	BRUCE TASHMAN		REVISED FOR MANUFACTURE
55	11-17-71	BRUCE TASHMAN		REVISED FOR MANUFACTURE
56	11-17-71	BRUCE TASHMAN		REVISED FOR MANUFACTURE
57	11-17-71	BRUCE TASHMAN		REVISED FOR MANUFACTURE
58	11-17-71	BRUCE TASHMAN		REVISED FOR MANUFACTURE
59	11-17-71	BRUCE TASHMAN		REVISED FOR MANUFACTURE
60	11-17-71	BRUCE TASHMAN		REVISED FOR MANUFACTURE
61	11-17-71	BRUCE TASHMAN		REVISED FOR MANUFACTURE
62	11-17-71	BRUCE TASHMAN		REVISED FOR MANUFACTURE
63	11-17-71	BRUCE TASHMAN		REVISED FOR MANUFACTURE
64	11-17-71	BRUCE TASHMAN		REVISED FOR MANUFACTURE
65	11-17-71	BRUCE TASHMAN		REVISED FOR MANUFACTURE
66	11-17-71	BRUCE TASHMAN		REVISED FOR MANUFACTURE
67	11-17-71	BRUCE TASHMAN		REVISED FOR MANUFACTURE
68	11-17-71	BRUCE TASHMAN		REVISED FOR MANUFACTURE
69	11-17-71	BRUCE TASHMAN		REVISED FOR MANUFACTURE
70	11-17-71	BRUCE TASHMAN		REVISED FOR MANUFACTURE
71	11-17-71	BRUCE TASHMAN		REVISED FOR MANUFACTURE
72	11-17-71	BRUCE TASHMAN		REVISED FOR MANUFACTURE
73	11-17-71	BRUCE TASHMAN		REVISED FOR MANUFACTURE
74	11-17-71	BRUCE TASHMAN		REVISED FOR MANUFACTURE
75	11-17-71	BRUCE TASHMAN		REVISED FOR MANUFACTURE
76	11-17-71	BRUCE TASHMAN		REVISED FOR MANUFACTURE
77	11-17-71	BRUCE TASHMAN		REVISED FOR MANUFACTURE
78	11-17-71	BRUCE TASHMAN		REVISED FOR MANUFACTURE
79	11-17-71	BRUCE TASHMAN		REVISED FOR MANUFACTURE
80	11-17-71	BRUCE TASHMAN		REVISED FOR MANUFACTURE
81	11-17-71	BRUCE TASHMAN		REVISED FOR MANUFACTURE
82	11-17-71	BRUCE TASHMAN		REVISED FOR MANUFACTURE
83	11-17-71	BRUCE TASHMAN		REVISED FOR MANUFACTURE
84	11-17-71	BRUCE TASHMAN		REVISED FOR MANUFACTURE
85	11-17-71	BRUCE TASHMAN		REVISED FOR MANUFACTURE
86	11-17-71	BRUCE TASHMAN		REVISED FOR MANUFACTURE
87	11-17-71	BRUCE TASHMAN		REVISED FOR MANUFACTURE
88	11-17-71	BRUCE TASHMAN		REVISED FOR MANUFACTURE
89	11-17-71	BRUCE TASHMAN		REVISED FOR MANUFACTURE
90	11-17-71	BRUCE TASHMAN		REVISED FOR MANUFACTURE
91	11-17-71	BRUCE TASHMAN		REVISED FOR MANUFACTURE
92	11-17-71	BRUCE TASHMAN		REVISED FOR MANUFACTURE
93	11-17-71	BRUCE TASHMAN		REVISED FOR MANUFACTURE
94	11-17-71	BRUCE TASHMAN		REVISED FOR MANUFACTURE
95	11-17-71	BRUCE TASHMAN		REVISED FOR MANUFACTURE
96	11-17-71	BRUCE TASHMAN		REVISED FOR MANUFACTURE
97	11-17-71	BRUCE TASHMAN		REVISED FOR MANUFACTURE
98	11-17-71	BRUCE TASHMAN		REVISED FOR MANUFACTURE
99	11-17-71	BRUCE TASHMAN		REVISED FOR MANUFACTURE
100	11-17-71	BRUCE TASHMAN		REVISED FOR MANUFACTURE

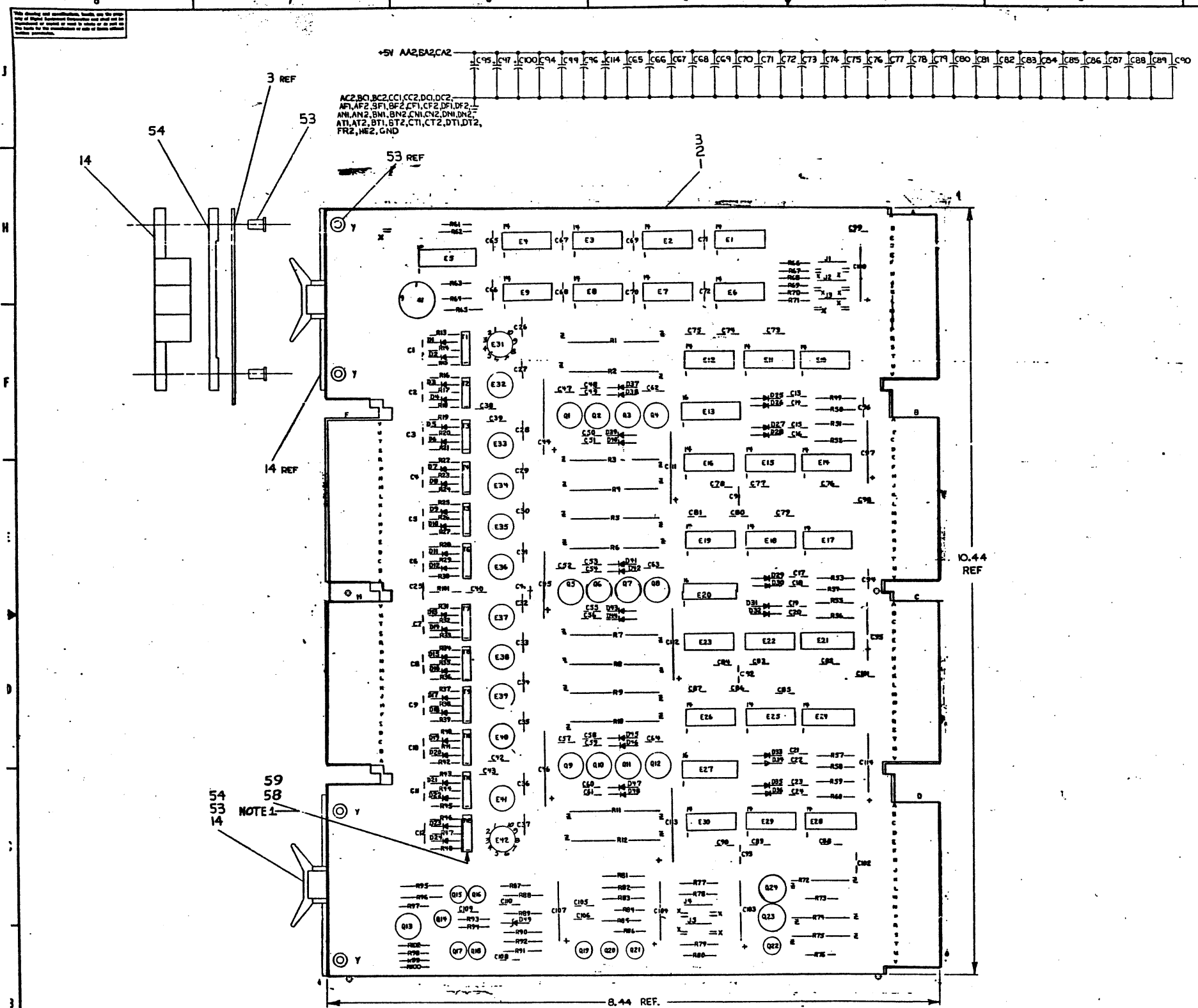
REV	DATE	BY	CHKD	DESCRIPTION
1	11-17-71	BRUCE TASHMAN		INITIAL DESIGN
2	11-17-71	BRUCE TASHMAN		REVISED FOR MANUFACTURE
3	11-17-71	BRUCE TASHMAN		REVISED FOR MANUFACTURE
4	11-17-71	BRUCE TASHMAN		REVISED FOR MANUFACTURE
5	11-17-71	BRUCE TASHMAN		REVISED FOR MANUFACTURE
6	11-17-71	BRUCE TASHMAN		REVISED FOR MANUFACTURE
7	11-17-71	BRUCE TASHMAN		REVISED FOR MANUFACTURE
8	11-17-71	BRUCE TASHMAN		REVISED FOR MANUFACTURE
9	11-17-71	BRUCE TASHMAN		REVISED FOR MANUFACTURE
10	11-17-71	BRUCE TASHMAN		REVISED FOR MANUFACTURE
11	11-17-71	BRUCE TASHMAN		REVISED FOR MANUFACTURE
12	11-17-71	BRUCE TASHMAN		REVISED FOR MANUFACTURE
13	11-17-71	BRUCE TASHMAN		REVISED FOR MANUFACTURE
14	11-17-71	BRUCE TASHMAN		REVISED FOR MANUFACTURE
15	11-17-71	BRUCE TASHMAN		REVISED FOR MANUFACTURE
16	11-17-71	BRUCE TASHMAN		REVISED FOR MANUFACTURE
17	11-17-71	BRUCE TASHMAN		REVISED FOR MANUFACTURE
18	11-17-71	BRUCE TASHMAN		REVISED FOR MANUFACTURE
19	11-17-71	BRUCE TASHMAN		REVISED FOR MANUFACTURE
20	11-17-71	BRUCE TASHMAN		REVISED FOR MANUFACTURE
21	11-17-71	BRUCE TASHMAN		REVISED FOR MANUFACTURE
22	11-17-71	BRUCE TASHMAN		REVISED FOR MANUFACTURE
23	11-17-71	BRUCE TASHMAN		REVISED FOR MANUFACTURE
24	11-17-71	BRUCE TASHMAN		REVISED FOR MANUFACTURE
25	11-17-71	BRUCE TASHMAN		REVISED FOR MANUFACTURE
26	11-17-71	BRUCE TASHMAN		REVISED FOR MANUFACTURE
27	11-17-71	BRUCE TASHMAN		REVISED FOR MANUFACTURE
28	11-17-71	BRUCE TASHMAN		REVISED FOR MANUFACTURE
29	11-17-71	BRUCE TASHMAN		REVISED FOR MANUFACTURE
30	11-17-71	BRUCE TASHMAN		REVISED FOR MANUFACTURE
31	11-17-71	BRUCE TASHMAN		REVISED FOR MANUFACTURE
32	11-17-71	BRUCE TASHMAN		REVISED FOR MANUFACTURE
33	11-17-71	BRUCE TASHMAN		REVISED FOR MANUFACTURE
34	11-17-71	BRUCE TASHMAN		REVISED FOR MANUFACTURE
35	11-17-71	BRUCE TASHMAN		REVISED FOR MANUFACTURE
36	11-17-71	BRUCE TASHMAN		REVISED FOR MANUFACTURE
37	11-17-71	BRUCE TASHMAN		REVISED FOR MANUFACTURE
38	11-17-71	BRUCE TASHMAN		REVISED FOR MANUFACTURE
39	11-17-71	BR		

This drawing and specifications, herein, are the property of Digital Equipment Corporation and shall not be reproduced or used in whole or in part without the written permission of said company.



QTY.	DESCRIPTION	PARTS LIST	PART NO.	ITEM NO.
UNLESS OTHERWISE SPECIFIED				
DRN	JEANNE FREMONT	DATE	7/3/70	
CHKD	R. VOGELSANG	DATE	7/23/70	
DESIGNED BY	R. VOGELSANG	DATE	7/23/70	
DRAWN BY	R. VOGELSANG	DATE	7/23/70	
PROL. ENR.		DATE		
PROD.		DATE		
MATERIAL				
FINISH				
SCALE		SHEET	NO.	REV.
E ICS		2	6619-0-1	A
SHEET 2 OF 2		DIST. 12		

6619-0-1
 E I C S
 A



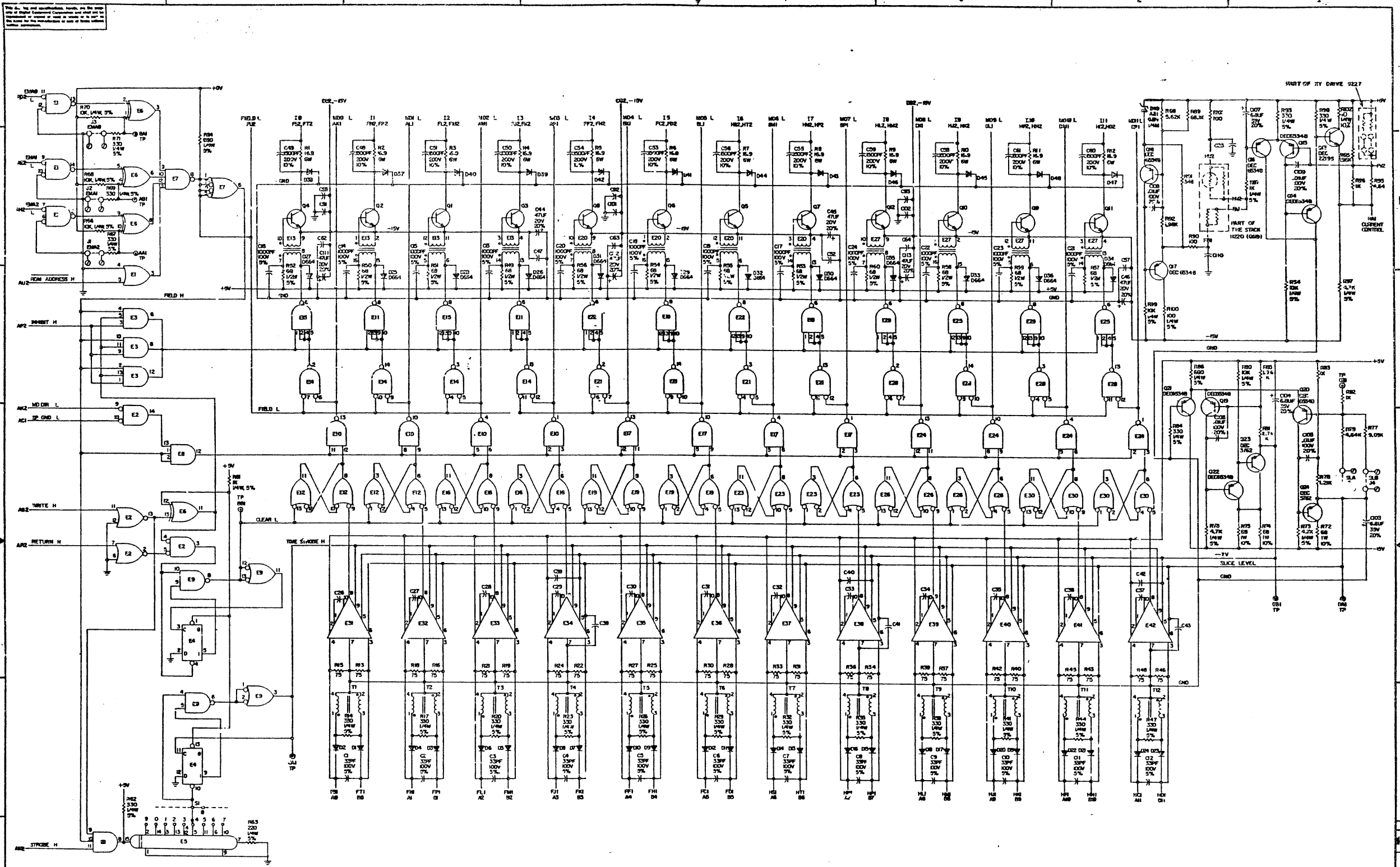
NOTES:
 1. CUT CATERPILLER GROMMET (DEC 9007622) 7/8" LONG, ON ONE SIDE CUT TOOTH OUT 3/8" FROM ONE END. ON EACH END SPRAY WITH SCOTCH-GRIP ADHESIVE NO 77 (DEC 9008907). FOLLOW DIRECTIONS FOR NON-PERMANENT BONDS ON BACK OF CAN. PLACE THE GROMMET OVER I22 TRANSFORMERS WITH CUT OUT TOOTH OVER CAPACITOR C40.

QTY	REF DESIGNATION	DESCRIPTION	PART NO.	ITEM NO.
1	R102	RES. 10, 1/4W, 10%	1300170	62
11		SPLIT LUGS	9006735	61
1	R81	RES. 2.7K 1/8W 1% 100 MFP	1304868	40
1		SCOTCH GRIP ADHESIVE	9008907	59
1		CATERPILLER GROMMET	9007622	58
1		ASSY DRILLING HOLE LAYOUT	1-AH-G104-G-4	57
2	R90, R101	RES. 100, 1/4W, 1% 100 MFP	1302358	56
1		WIRE #22 AWG SOLID BUS	9107560-01	55
2		SPACER (CABLE CLAMP)	1203704	54
4		EYELET #634-11 E.B. STIMPSON	9006750	53
1	E6	I.C. DEC 7486	1910011	52
3	E10, E17, E24	I.C. DEC 8861	1909705	51
4	E1, E4, E21, E28	I.C. DEC 384	1909486	50
1	E2	I.C. DEC 6380	1909477	49
2	E3, E5	I.C. DEC 74H	1909267	48
1	E9	I.C. DEC 74H00N	1909056	47
6	E11, E15, E18, E22, E25, E29	I.C. DEC 74H40N	1905586	46
1	E7	I.C. DEC 7440N	1905579	45
6	E12, E16, E19, E23, E26, E30	I.C. DEC 7400N	1905575	44
1	E4	I.C. DEC 7474N	1905547	43
1	E31-E42	I.C. MC 1540G	1905521	42
1	E5	100NS DELAY LINE	1610033-C	41
3	E13, E20, E27	PULSE TRANSFORMER	1609996	40
12	T1-T12	TRANSFORMER 17E-5	1609478	39
12	Q1-Q12	TRANSISTOR DEC 3734	150062	38
2	Q23, Q24	TRANSISTOR DEC 3762	1509649	37
4	Q14-Q22	TRANSISTOR DEC 6534-B	1503409-01	36
1	Q13	TRANSISTOR DEC 2219-S	1508881	35
12	R1-R12	RES. 6.8K, 1/4W, 5% CC	1309679	34
12	R13-R20	RES. 6.8K, 1/4W, 5% CC	1309405	33
1	R89	RES. 68.1K, 1/8W, 1% 100 MFP	1305252	32
1	R88	RES. 5.62K, 1/8W, 1% 100 MFP	1305128	31
1	R91	RES. 348, 1/8W, 1% 100 MFP	1304858	30
2	R79, R95	RES. 464K, 1/8W, 1% 100 MFP	1304856	29
1	R77	RES. 9.09K, 1/8W, 1% 100 MFP	1304855	28
3	R65, R92, R85	RES. 1.96K, 1/8W, 1% 100 MFP	1304833	27
3	R82, R83, R96	RES. 1K, 1/8W, 1% 100 MFP	1303114	26
1	R78	RES. 1.21K, 1/8W, 1% 100 MFP	1302871	25
24	R13, R15, R16, R18, R19, R21, R22, R24, R25, R27, R28, R30, R31, R33, R34, R36, F.37, R39, R40, R42, R43, R45, R46, R48	RES. 75, 1/8W, 1%	1303064	24
2	R64, R86	RES. 680, 1/4W, 5% CC	1301424	23
6	R66, R68, R70, R80, R94, R99	RES. 10K, 1/4W, 5% CC	1300479	22
3	R73, R76, R97	RES. 4.7K, 1/4W, 5% CC	1300447	21
2	R61, R87	RES. 1K, 1/4W, 5% CC	1300365	20
19	R41, R17, R20, R23, R26, R29, R32, R35, R38, R41, R44, R47, R62, R67, R69, R71, R84, R93, R98	RES. 330, 1/4W, 5% CC	1300295	19
1	R63	RES. 220, 1/4W, 5% CC	1300271	18
1	R100	RES. 100, 1/4W, 5% CC	1300229	17
3	R72, R74, R75	RES. 68, 1/4W, 10% CC	1300222	16
1	S1	ROTARY SWITCH	1210043-0	15
2		HANDLE FLIP CHIP - GREEN	1000337-01	14
1	D49	DIODE 1/4W, 5.6A Z1	1109911-1	13
36	D1-D24, D37-D48	DIODE D672	1105275	12
12	D25-D36	DIODE D664	1100114	11
32	C25-C43, C47, C52, C57, C62-C64, C91-C93, C98, C101, C102, C110	CAP. 0.047MFD 16V 20% DISC	1009678	10
33	C99, C105, C106, C108, C109	CAP. 0.1MFD 100V 20% DISC	1001610	9
6	C44-C46, C111-C113	CAP. 47MFD 20V 20% S. TANT	1000079	8
7	C45, C47, C100, C103, C104, C107, C114	CAP. 6.8MFD 35V 20% S. TANT	1000067	7
12	C48-C51, C53-C56, C58-C61	CAP. 1500PF 200V 10% DISC	1000054	6
12	C13-C24	CAP. 1000PF 100V 5% D. MICA	1000042	5
12	C1-C12	CAP. 33PF 100V 5% D. MICA	1000009	4
1		ETCHED CIRCUIT BOARD	5008847	3
REF		MODULE ECO HISTORY	B-MH-G104-G-6	2
REF		X-Y COORDINATE HOLE LOCATION	K-CO-G104-G-4	1

QTY	REF	DESCRIPTION	PART NO.	ITEM NO.
55	E2	J5-A	J5-B	
		J4-A	J4-B	
		J3-A	J3-B	
		J2-A	J2-B	
		J1-A	J1-B	

REV	DATE	BY	CHKD	DESCRIPTION
1	11/11	B. HARPLEY		...
2	11/11	B. HARPLEY		...
3	11/11	B. HARPLEY		...
4	11/11	B. HARPLEY		...
5	11/11	B. HARPLEY		...
6	11/11	B. HARPLEY		...
7	11/11	B. HARPLEY		...
8	11/11	B. HARPLEY		...
9	11/11	B. HARPLEY		...
10	11/11	B. HARPLEY		...
11	11/11	B. HARPLEY		...
12	11/11	B. HARPLEY		...
13	11/11	B. HARPLEY		...
14	11/11	B. HARPLEY		...
15	11/11	B. HARPLEY		...
16	11/11	B. HARPLEY		...
17	11/11	B. HARPLEY		...
18	11/11	B. HARPLEY		...
19	11/11	B. HARPLEY		...
20	11/11	B. HARPLEY		...
21	11/11	B. HARPLEY		...
22	11/11	B. HARPLEY		...
23	11/11	B. HARPLEY		...
24	11/11	B. HARPLEY		...
25	11/11	B. HARPLEY		...
26	11/11	B. HARPLEY		...
27	11/11	B. HARPLEY		...
28	11/11	B. HARPLEY		...
29	11/11	B. HARPLEY		...
30	11/11	B. HARPLEY		...
31	11/11	B. HARPLEY		...
32	11/11	B. HARPLEY		...
33	11/11	B. HARPLEY		...
34	11/11	B. HARPLEY		...
35	11/11	B. HARPLEY		...
36	11/11	B. HARPLEY		...
37	11/11	B. HARPLEY		...
38	11/11	B. HARPLEY		...
39	11/11	B. HARPLEY		...
40	11/11	B. HARPLEY		...
41	11/11	B. HARPLEY		...
42	11/11	B. HARPLEY		...
43	11/11	B. HARPLEY		...
44	11/11	B. HARPLEY		...
45	11/11	B. HARPLEY		...
46	11/11	B. HARPLEY		...
47	11/11	B. HARPLEY		...
48	11/11	B. HARPLEY		...
49	11/11	B. HARPLEY		...
50	11/11	B. HARPLEY		...
51	11/11	B. HARPLEY		...
52	11/11	B. HARPLEY		...
53	11/11	B. HARPLEY		...
54	11/11	B. HARPLEY		...
55	11/11	B. HARPLEY		...
56	11/11	B. HARPLEY		...
57	11/11	B. HARPLEY		...
58	11/11	B. HARPLEY		...
59	11/11	B. HARPLEY		...

REV	DATE	BY	CHKD	DESCRIPTION
DEC 3734		SAME		
DEC 3762		SAME		
DEC 6534-BMPS-534				
DEC 2219-S		2N 2214		
M.M. 6.8AZ1		1V4099		
D672		IN3653		
D664		IN3606		
DEC NO.		EIA NO.		
SEMICONDUCTOR		CONVERSION CHART		

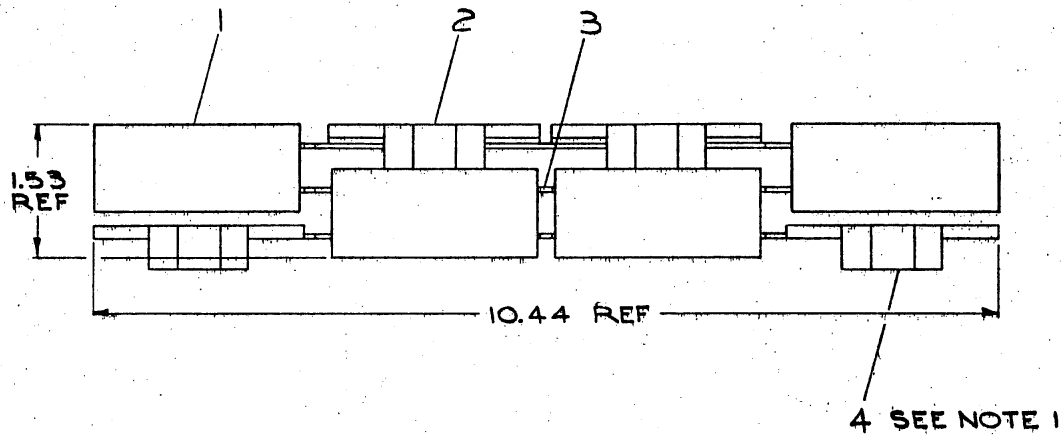


NOTE: IN PLACE OF DEC 6380, DEC 390 (609-485) MAY BE USED.

QTY.	DESCRIPTION	PART NO.	ITEM NO.
UNLESS OTHERWISE SPECIFIED			
DRW. DATE	7/1/57	ELECTRONIC EQUIPMENT CORPORATION	
CHK'D. DATE		SENSE INHIBIT	
DESIGNED BY		SCALE	
CHK'D. DATE		E/S	
PROD. DATE		G04-0-1	
MATERIAL		REV. CODE	REV. NO.
FINISH		SCALE	REV. H
		2 OF 2	

This drawing and specifications, herein, are the property of Digital Equipment Corporation and shall not be reproduced or copied or used in whole or in part as the basis for the manufacture or sale of items without written permission.

NOTES:
 1. ITEM NO. 4 (SENSE INHIBIT G104 BOARD) MUST ALWAYS BE FACING THE FRONT OF THE MACHINE.



FIRST USED ON OPTION/MODEL	QTY.	DESCRIPTION	PART NO.	ITEM NO.
PDP8/E				
PARTS LIST				
UNLESS OTHERWISE SPECIFIED	DRN	DATE	digital EQUIPMENT CORPORATION <small>WAYNARD, MASSACHUSETTS</small>	
UNLESS OTHERWISE SPECIFIED	CHK'D	DATE		
TOLERANCES	ENG	DATE		
ANGLES = 0°30'	PROJ. ENG.	DATE		
FINAL SURFACE QUALITY / REMOVE BURRS AND BREAK SHARP CORNERS	PROD.	DATE	4K 12 BIT MEMORY	
MATERIAL	NEXT HIGHER ASSY.			
FINISH	A-ML-MMS/E-Ø	SCALE	SIZE CODE	NUMBER
		1:1	DUA	MMS-E-Ø
		SHEET 1 OF 1		

REV.	CHANGE NO.

**DIGITAL EQUIPMENT CORPORATION
MAYNARD, MASSACHUSETTS**

ENGINEERING SPECIFICATION

DATE 5/26/71

TITLE MM8E ACCEPTANCE PROCEDURE

REVISIONS

REV	DESCRIPTION	CHG NO	ORIG	DATE	APPD BY	DATE

This drawing and specifications, herein, are the property of Digital Equipment Corporation and shall not be reproduced or copied or used in whole or in part as the basis for the manufacture or sale of items without written permission.

ENGINEERING SPECIFICATION

CONTINUATION SHEET

TITLE MM8E ACCEPTANCE PROCEDURE

1.0 SCOPE

1.1 This procedure defines the minimum performance standards required of a MM8-E option which is not accepted as an integral part of a PDP8-E, i.e., add-on options.

2.0 SET UP

- 2.1 Remove the four (4) edge connectors from the tops of the G104, H220 and G227 (MM8-E) modules.
- 2.2 Inspect the G104, H220 and G227 (MM8-E) modules for conformance to "Final Inspection Procedure for Flip-Chip Modules" (A-SP-7665039-0-0) and "Module Rework Standard" (A-SP-7605845-0-0).
- 2.3 Check the G104 and G227 modules for a legible three character numerical date code.
- 2.4 Check the G104 and G227 modules to insure the circuit and etch revisions are up to current ECO levels. Make sure all EMA jumpers on the G104 module are installed.
- 2.5 Inspect the G104 to make sure a center strobe position is stamped on the module.
- 2.6 Insure that strobe switch is set to center position indicated on the G104.
- 2.7 Ascertain that the MM8E option has been checked out in heat and vibrated by Production.
- 2.8 Make sure the power to the PDP8-E is turned OFF.
- 2.9 Insert the G104, H220 and G227 (MM8E) modules into the omnibus. Be sure you adhere to the "Recommended Omnibus Assignment List" (A-SP-PDP8-E-0-4).
- 2.10 Connect the MM8E modules together using the four (4) edge connectors. The G104 should be in front, the H220 in the middle and the G227 third.

3.0 ELECTRICAL TEST

- 3.1 Turn on power to the PDP8-E.
- 3.2 Follow the loading procedure for MM8E Memory Checkerboard (MAINDEC-8E-DLAA).
- 3.3 Run the MM8E Memory Checkerboard diagnostic following the instructions in the program write-up, this test must run error free for a minimum of 10 minutes.
- 3.4 At the completion of 3.3 halt the PDP8-E and turn off the power to the PDP8-E.
- 3.5 Remove the two (2) edge connectors that connect the G104 and H220 together.

ENG <i>R. C. Dukes</i>	APPD <i>W. C. Johnson</i>	SIZE A	CODE SP	NUMBER 7665139-0-0	REV
------------------------	---------------------------	---------------	----------------	--------------------	-----

SIZE A	CODE SP	NUMBER 7665139-0-0	REV
---------------	----------------	--------------------	-----

TITLE MM8E ACCEPTANCE PROCEDURE

- 3.6 Remove the G104 module from the omnibus.
- 3.7 Turn **strobe switch** one position clockwise from the center position that is indicated on the G104 module. Reinsert the G104 module into the omnibus.
- 3.8 Reconnect the G104 and H220 modules using the two (2) edge connectors.
- 3.9 Repeat 3.3
- 3.10 At the completion of 3.6 halt the PDP8-E and turn off the power to the PDP8-E.
- 3.11 Repeat 3.5 and 3.6
- 3.12 Turn **strobe switch** one position counter-clockwise from the center position that is indicated on the G104 module. Reinsert the G104 module into the omnibus.
- 3.13 Repeat 3.8.
- 3.14 Repeat 3.3
- 3.15 At the completion of 3.9 halt the PDP8-E and turn off the power to the PDP8-E.
- 3.16 Repeat 3.5 and 3.6.
- 3.17 Return **strobe switch** to the center position indicated on the G104 module.
- 3.18 Reinsert the G104 module into the omnibus.
- 3.19 Repeat 3.8.
- 3.20 Follow the loading program for MM8E Memory Address Test (MAINDEC-8E-DLEA).
- 3.21 Run the MM8E Memory Address Diagnostic following the instructions in the program write-up. This test must run error free for a minimum of ten (10) minutes.
- 3.22 If the construction requisition specifically states a particular memory field is desired, have production cut the appropriate EMA jumper or jumpers.

4.0 FAILURE CLASSIFICATION

4.1 Mechanical Failure..

- 4.1.1 Any G104, H220 and G227 (MM8E) module that does not meet the criterion outlined in 2.1, 2.2, 2.3, 2.4, and 2.5 will be classified as a failure.
- 4.1.2 The acceptance supervisor has the option of either waiving the failure (using DEC form 12-1026) or returning the defective module or modules to production for repair.

SIZE	CODE	NUMBER	REV
A	SP	7665139-0-0	

TITLE MM8E ACCEPTANCE PROCEDURE

4.2 Electrical Failure.

- 4.2.1 Any MM8E (G104, H220 and G227 module) which while performing 3.3, 3.6, 3.9 and 3.13 halts, generates error printouts, garble or runs other than continuous and as specified in the diagnostic write-up will be classified defective and returned to production for repair.

SIZE	CODE	NUMBER	REV
A	SP	7665139-0-0	