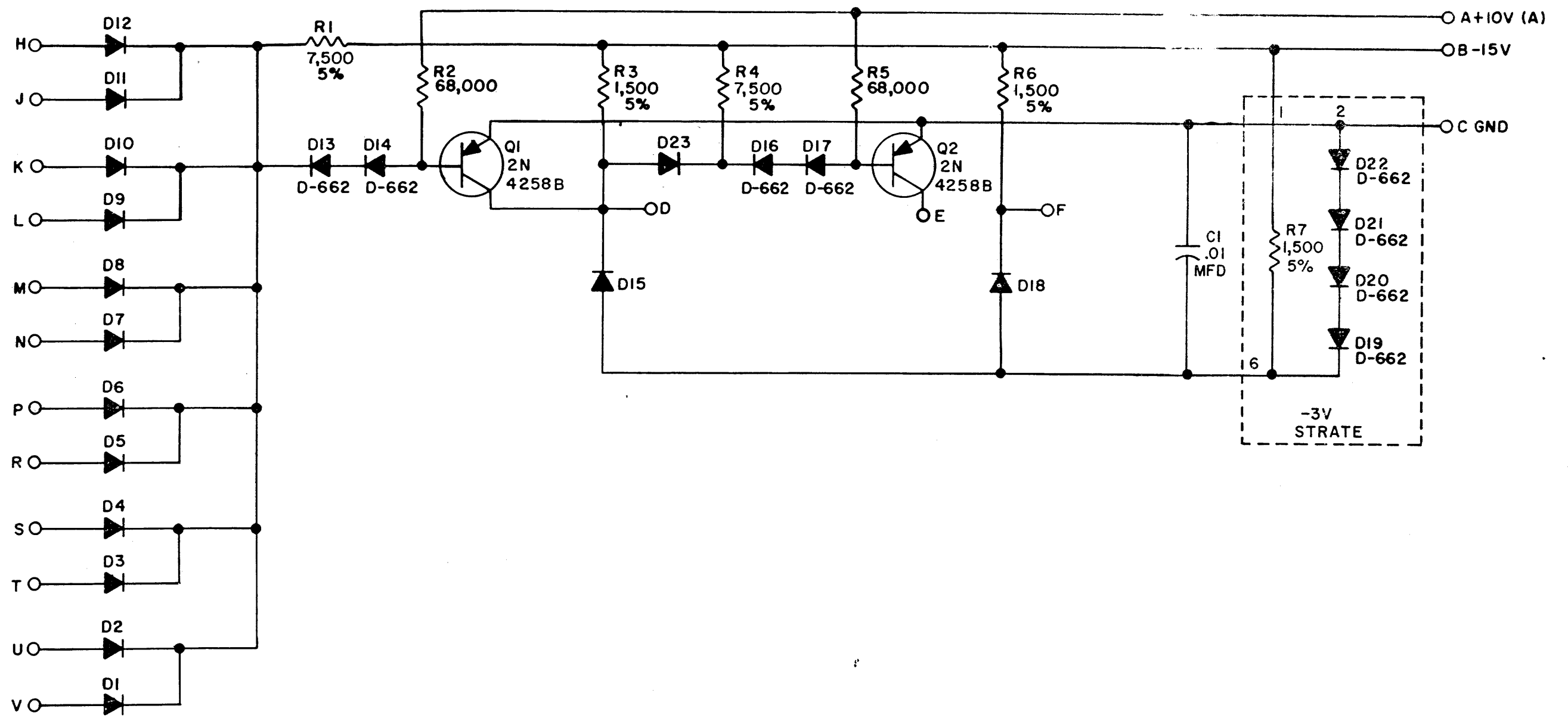


THIS SCHEMATIC IS FURNISHED ONLY FOR TEST AND MAINTENANCE PURPOSES. THE CIRCUITS ARE PROPRIETARY IN NATURE AND SHOULD BE TREATED ACCORDINGLY. COPYRIGHT 1967 BY DIGITAL EQUIPMENT CORPORATION



UNLESS OTHERWISE INDICATED;  
RESISTORS ARE 1/4W; 10%  
CAPACITORS ARE MMFD  
DIODES ARE D-664

USE THE ETCH BOARD OF THE B171



REVISIONS CHK CHG NO. REV.	DRN. <i>M. Waller</i>	DATE <i>5-31-67</i>	TRANSISTOR & DIODE CONVERSION CHART				 EQUIPMENT CORPORATION MAYNARD MASSACHUSETTS	TITLE DIODE GATE B172			
	CHK'D <i>M. Waller</i>	DATE <i>5-31-67</i>	DEC	EIA	DEC	EIA		SIZE B	CODE CS	NUMBER B172-0-1	REV
	ENG. <i>D. J. Chen</i>	DATE <i>5-31-67</i>	D662	IN645				PRINTED CIRCUIT REV <b>C</b>			
	PROD.	DATE	D664	IN3606							