

TITLE	SHEET	SIZE	CODE	NUMBER	REV
TU6θ DECASSETTE	2 OF 4	B	DD	TU6θ-θ	A

CUSTOMER PRINT SET		ELECTRICAL					CUSTOMER PRINT SET		MECHANICAL						
TU6Ø-Ø	MFG. SET	FIND NO.	DRAWING NO.	REV	NO OF SHT	DESCRIPTION	OPTION NO./FILE DATE	TU6Ø-Ø	MFG. SET	FIND NO.	DRAWING NO.	REV	NO OF SHT	DESCRIPTION	OPTION NO./FILE DATE
X		1	D-WD-TU6Ø-Ø-WD		1	CASSETTE DRIVE WIRING DIAGRAM		X		1	D-UA-TU6Ø-Ø-Ø	A	2	TU6Ø UNIT ASSEMBLY	
								X			A-PL-TU6Ø-Ø-Ø	A	2	TU6Ø UNIT ASSEMBLY	
											E-IA-7409943-0-0		2	CHASSIS (TU6Ø)	
											D-IA-7409990-0-0		1	PLATE, CHASSIS, FRONT (TU6Ø)	
											E-MD-7409941-0-0		1	COVER, CHASSIS	
X		13	D-IA-7009041-0-0		1	TERMINATOR CABLE ASSY					C-MD-7409904-0-0		1	BRACKET, SYMMETRICAL	
			D-CS-5410135-0-1		2	TERMINATOR, CASSETTE DRIVE					B-MD-7409933-0-0		1	EUSHING, PIVOT	
											D-UA-BCØ5L-Ø-Ø		1	CABLE, JUMPER	
											D-PS-1210931-0-0		1	BLOCK, CABLE RETAINING	
											C-MD-7410690-0-0		1	BRACKET, SHIPPING	
											D-PS-1209154-0-0		1	CHASSIS-TRAK	
X		17	D-CS-M776Ø-Ø-1		4	TU6Ø LOGIC									
X		18	D-CS-M7761-Ø-1		5	READ/WRITE AND SERVO		X		2	D-AD-7009014-0-0		2	TRANSPORT ASSY (TU6Ø)	
								X			A-PL-7009014-0-0		3	TRANSPORT ASSY (TU6Ø)	
											C-MD-7409911-0-0		1	SPACER, TAPE GUIDE	
											C-MD-7409912-0-0		1	GUIDE, TAPE	
											C-MD-7409928-0-0		1	BRACKET, SOLENOID	
											C-MD-7409908-0-0		1	PLATE, HEAD MOUNT	
C		19	B-DD-H751-Ø		3	H751 POWER SUPPLY					B-MD-7410518-0-0		1	BUTTON, REWIND SWITCH	
			D-UA-H751-Ø-Ø		2	H751 POWER SUPPLY					B-MD-7410519-0-0		1	BRACKET, REWIND SWITCH	
			E-IA-5310191-0-0		1	CHASSIS, POWER SUPPLY					C-MD-7410537-0-0		1	SPRING, LOCK BAR	
											B-MD-7410544-0-0		1	SPACER, E.O.T. BLOCK	
											D-PS-1211279-0-0		1	COUPLING, CASSETTE DRIVE (3MM)	
											D-MD-7409917-0-0		1	LOCK-BAR, CASSETTE	
											D-PS-1211289-0-0		1	SENSOR ASSY	
											B-MD-7409929-0-0		1	BRACKET, TERMINAL BOARD	
								X		3	D-IA-7410640-0-0		1	BASE ASSEMBLY	
											E-MD-7409835-0-0		1	BASE, CASSETTE TRANSPORT (MACH)	
											B-MD-7409938-0-0		1	BUSHING, ROCKER	
											B-MD-7410553-0-0		1	SHIM, SKEW	
											C-MD-7410539-0-0		1	PIN, ANCHOR	
											C-MD-7409934-0-0		1	PIN, SPRING, MOTOR BIAS	
											E-PS-1211122-0-0		1	BASE, CASSETTE TRANSPORT (CAST)	

CUSTOMER PRINT SET CODES	X = PRINT OF DOCUMENT INCLUDED IN PRINT SET	TITLE	SHEET 3 OF 4	SIZE CODE	NUMBER	REV
	C = INCLUDES ALL PRINTS INDICATED ON DOCUMENT					
	S = CONFIDENTIAL AUTHORIZED SIGNATURE REQUIRED	TU6Ø DECASSETTE				

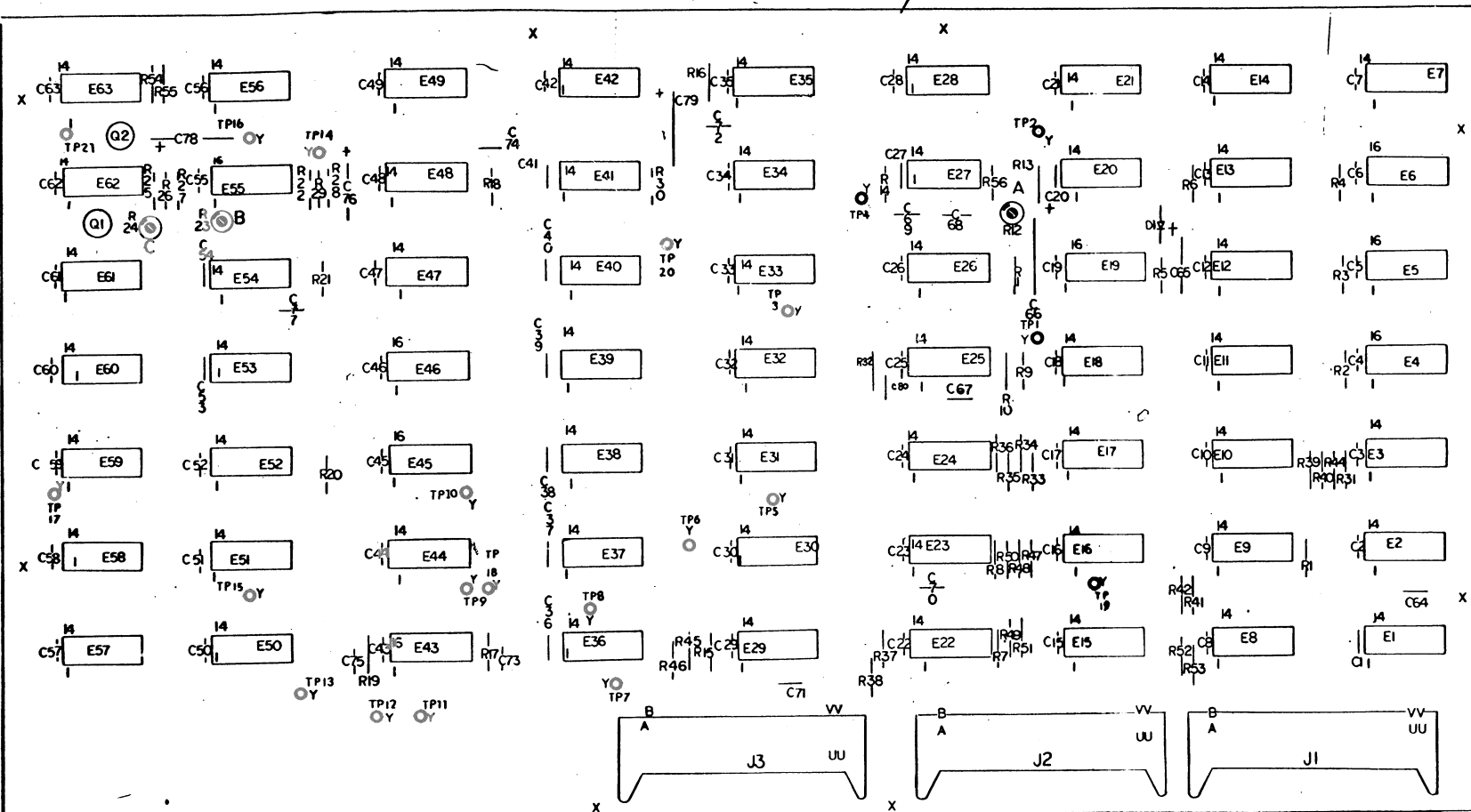


This drawing and specifications, herein, are the property of Digital Equipment Corporation and shall not be reproduced or copied or used in whole or in part as the basis for the manufacture or sale of items without written permission.

**NOTES:**

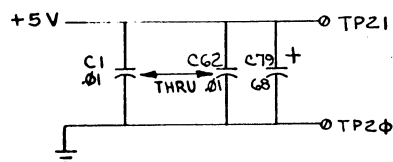
1. UNLESS OTHERWISE SPECIFIED:  
RESISTANCE IS IN OHMS  
CAPACITANCE IS IN MICROFARADS

1  
2  
3  
4



B.575 REF

15.70 REF



QTY	REF DESIGNATION	DESCRIPTION	PART NO.	ITEM NO.
1	C66	CAP 100 MFD 20V 10% S.TANT	1004815	49
1	R56	RES 43K 1/4W 5%	1304838	48
11	R34, R36, R38, R40, R42, R44, R46, R48, R49, R51, R53	RES 390 1/4W 5%	1300309	47
1	R16	RES 150 1/4W 5%	1300250	46
1	R5	RES 24K 1/4W 5%	1304837	45
2	R12, R24	RES 20K 1/2W 10% G2P POT	1309150-13	44
2	R25, R55	RES 2K 1/4W 5%	1302388	43
1	R23	RES 200 1/2W 10% G2P POT	1309150-10	42
1	R22	RES 56K 1/4W 5%	1302395	41
1	R27	RES 12K 1/4W 5%	1300488	40
2	R28, R11	RES 18K 1/4W 5%	1302465	39
11	R3, R33, R35, R37, R39, R41, R45, R47, R51, R50, R52	RES 180 1/4W 5%	1301322	38
1	R17	RES 10K 1/4W 5%	1300479	37
9	R2, R3, R4, R9, R20, R26, R29, R30, R54	RES 1K 1/4W 5%	1300365	36
1	R6	RES 470 1/4W 5%	1300316	35
9	R1, R7, R10, R13, R14, R15, R18, R21, R32	RES 220 1/4W 5%	1300271	34
1	R19	RES 20K 1/4W 5%	1302391	33
1	E53	IC DEC 7427	1910878	32
3	E19, E43, E55	IC DEC 74123	1910426	31
2	E45, E46	IC DEC 74193	1910018	30
1	E21	IC DEC 7486	1910011	29
5	E1, E8, E22, E23, E24	IC DEC 380	1909485	28
3	E11, E12, E13	IC DEC 7416	1909928	27
5	E3, E10, E15, E16, E25	IC DEC 8881	1909705	26
6	E18, E30, E32, E47, E49, E60	IC DEC 7404	1909686	25
3	E4, E5, E6	IC DEC 8271	1909615	24
2	E2, E9	IC DEC 7495	1909055	23
8	E17, E20, E33, E35, E38, E50, E58, E59	IC DEC 7402	1909004	22
2	E41, E52	IC DEC 7401	1905590	21
2	E42, E56	IC DEC 7450	1905580	20
2	E40, E54	IC DEC 7410	1905576	19
9	E27, E28, E29, E31, E39, E48, E51, E57, E61	IC DEC 7400	1905575	18
8	E7, E14, E26, E34, E36, E37, E44, E62	IC DEC 7474	1905547	17
1	D1	DIODE D664	1100114	16
1	C76	CAP 6.8 MFD 35V 10% S.TANT	1005306	15
1	C65	CAP 3.9 MFD 10V 10% S.TANT	1000064	14
64	C1 THRU C62, C73, C75	CAP .01 MFD 100V 20% DISC	1001610	13
2	C78, C79	CAP 68 MFD 15V 10% S.TANT	1000082	12
3	C67, C77, C72	CAP 1000 PF 100V 5% MICA	1000042	11
4	C68, C69, C71, C74	CAP 680 PF 100V 5% DM	1000026	10
2	C64, C70	CAP 470 PF 100V 5% DM	1000024	9
3	J1, J2, J3	CONNECTOR, 40PIN	1209941	8
21	TP1 THRU TP21	LUG, SWAGE #1026-2	9007791	7
2	Q1, Q2	XSTR, G534D PNP 31ΦMW	1503409	6
1	C80	CAP 100 PF 100V 5% DM	1000016	5
REF		MODULE ECO HISTORY	B-MH-M7760-0-3	4
REF		ASSY/DRILLING HOLE LAYOUT	E-AH-M7760-0-3	3
REF		X-Y COORDINATE HOLE LOCATION	K-CO-M7760-0-4	2
1		ETCHED CIRCUIT BOARD	5010025	1

IC TYPE	QTY	LOCATIONS
7405	8	14
8271	8	16
3E10	1	8
74193	8	16
74123	8	16
IC TYPE	QTY	LOCATIONS
GND		+5V

GND AND 5V ARE USUALLY PIN 7 AND 14 RESPECTIVELY EXCEPT AS STATED ABOVE

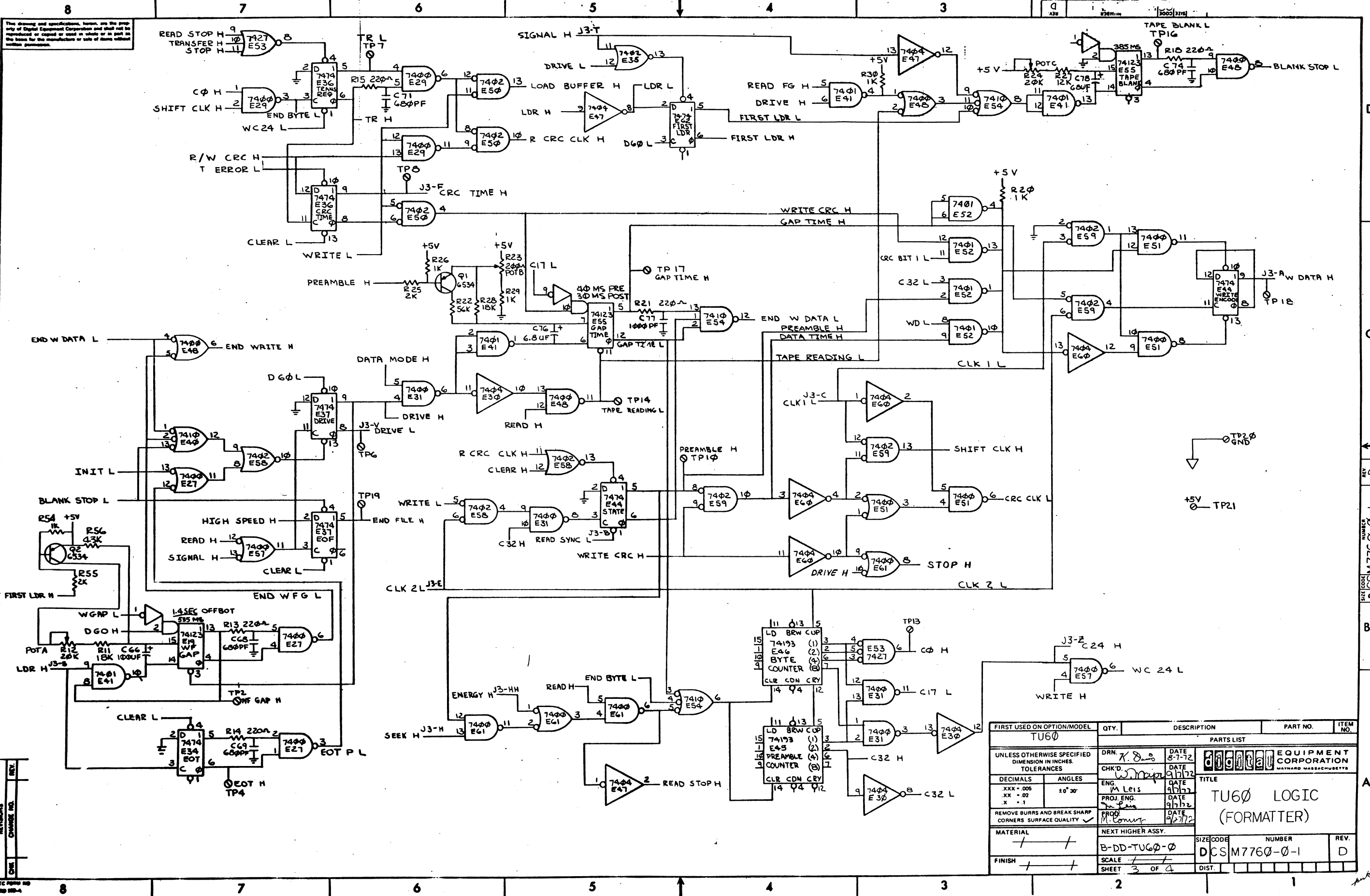
IC PIN LOCATIONS

FIRST USED ON OPTION MODEL  
TU60

PARTS LIST		EQUIPMENT CORPORATION	
ETCH BOARD REV	D	MAYNARD, MASSACHUSETTS	
DRN	Carlson	DATE	8/15/72
CHK'D	W. Major	DATE	9/18/72
ENG	M. Leis	DATE	9/15/72
PROJ. ENG	Y. Lee	DATE	9/15/72
PROD	W. Carlson	DATE	11/27/72
NEXT HIGHER ASSY			
B-DD-TU60-0			
SCALE	1:1	SHEET	1 OF 4
SEMICONDUCTOR CONVERSION CHART		TITLE	
DEC NO.	EIA NO.	TU60 LOGIC	
SIZE CODE		NUMBER	
D CSM7760-0-1		REV. D	



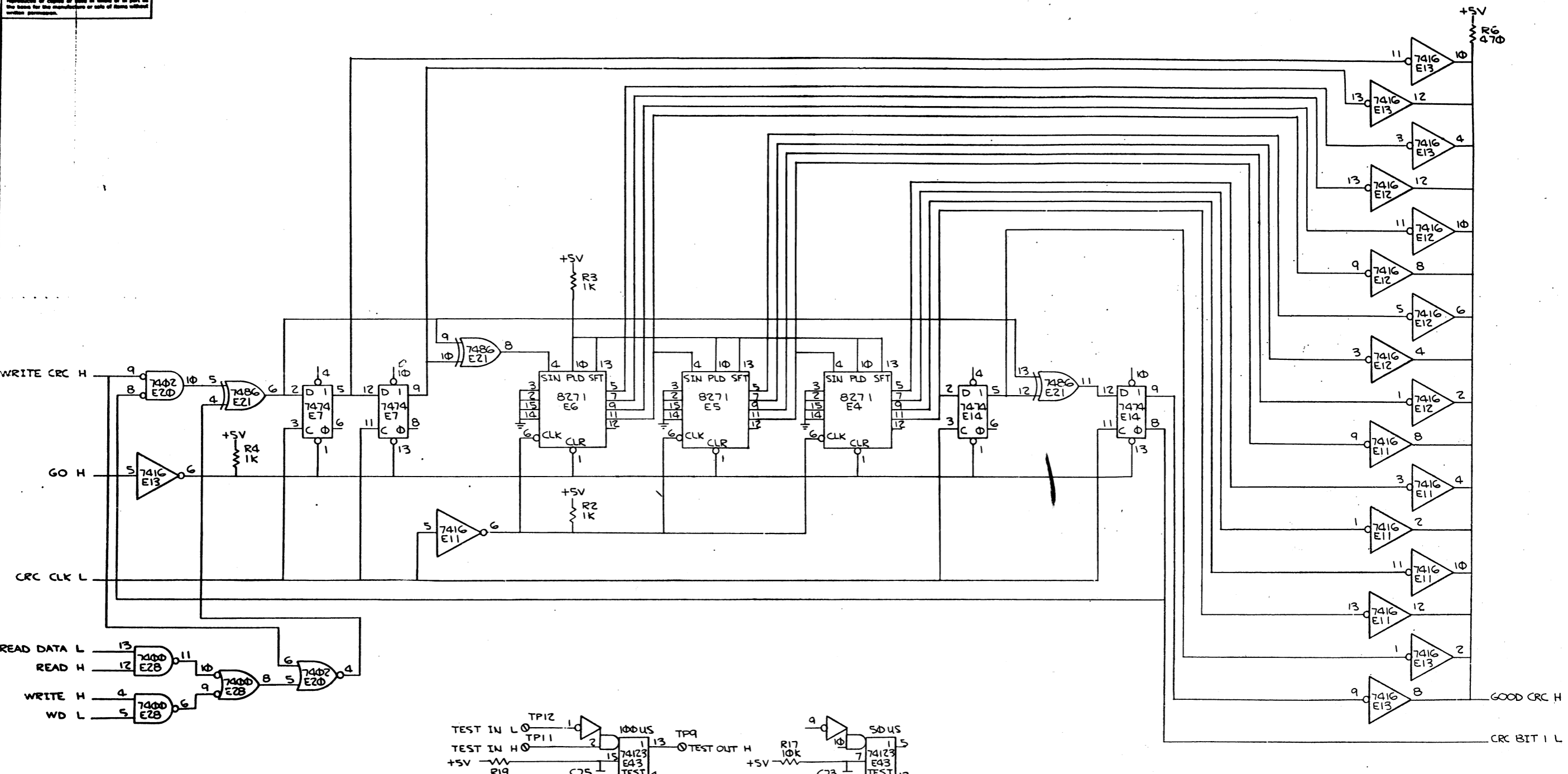
This drawing and specifications, herein, are the property of Digital Equipment Corporation and shall not be reproduced or copied in whole or in part on the basis for the manufacture or sale of items without written permission.



FIRST USED ON OPTION/MODEL	QTY.	DESCRIPTION	PART NO.	ITEM NO.
TU60				
PARTS LIST				
UNLESS OTHERWISE SPECIFIED DIMENSION IN INCHES. TOLERANCES		DRN. <i>K. D. S.</i>	DATE 8-7-72	 EQUIPMENT CORPORATION MAYNARD MASSACHUSETTS
DECIMALS	ANGLES	CHK'D. <i>W. M. P.</i>	DATE 9/1/72	
.XXX - .005	± 0° 30'	ENG. <i>M. L. S.</i>	DATE 9/1/72	
.XX - .02		PROJ. ENG. <i>S. P. S.</i>	DATE 9/1/72	
REMOVE BURRS AND BREAK SHARP CORNERS SURFACE QUALITY ✓		PROD. <i>M. C. S.</i>	DATE 9/2/72	
MATERIAL		NEXT HIGHER ASSY.		
FINISH		SCALE		
		SHEET 3 OF 4		
TITLE			SIZE CODE	NUMBER
TU60 LOGIC (FORMATTER)			D	CSM7760-0-1
			DIST.	

REV. D  
 NUMBER  
 CS M 7760-0-1  
 SIZE CODE  
 DCS M 7760-0-1  
 REV. D

The drawing and specifications, herein, are the property of Digital Equipment Corporation and shall not be reproduced or copied or used in whole or in part as the basis for the manufacture or sale of items without written permission.



REV	
CHANGE NO	
DATE	

FIRST USED ON OPTION/MODEL	QTY.	DESCRIPTION	PART NO.	ITEM NO.
TU60				
PARTS LIST				
UNLESS OTHERWISE SPECIFIED DIMENSION IN INCHES. TOLERANCES	DRN <i>As Blended</i>	DATE 5-11-72	<b>DIGITAL</b> EQUIPMENT CORPORATION MAYNARD MASSACHUSETTS	
DECIMALS .XXX - .005	CHK'D <i>W. Miller</i>	DATE 9/2/72		
ANGLES .XX - .02	ENG. <i>M. Leis</i>	DATE 9/7/72	TITLE <b>TU60 LOGIC (CRC LOGIC)</b>	
.X - .1	PROJ. ENG. <i>M. Leis</i>	DATE 9/7/72		
REMOVE BURRS AND BREAK SHARP CORNERS SURFACE QUALITY ✓	PROD. <i>M. Leis</i>	DATE 9/7/72		
MATERIAL	NEXT HIGHER ASSY.		SIZE CODE	NUMBER
FINISH	B-DD-TU60-0		DCS	M7760-0-1
	SCALE		DIST.	
	SHEET 4	OF 4		

REV D  
M7760-0-1  
DCS



This drawing and specifications, herein, are the property of Digital Equipment Corporation and shall not be reproduced or copied or used in whole or in part as the basis for the manufacture or sale of items without written permission.

1	5010029	ETCH BOARD	1	
2	K-CD-M7761-0-4	X-Y COORDINATE HOLE LOCATION	REF	
3	D-AH-M7761-0-5	ASSY/DRILLING HOLE LAYOUT	REF	
4	B-MH-M7761-0-6	MODULE ECG HISTORY	REF	
5	1000006	CAP 10PF 100V 5% DM	2	C61,C62
6	1000016	CAP 100PF 100V 5% DM	3	C12,C25,C34
7	1000019	CAP 150PF 100V 5% DM	2	C17,C18
8	1000023	CAP 330PF 100V 5% DM	2	C4,C37
9	1000026	CAP 680PF 100V 5% DM	5	C22,C23,C50,C51,C87
10	1000042	CAP 1000PF 100V 5% DM	2	C47,C48
11	1000054	CAP 1500PF 250V 10% DISC	2	C11,C31
12	1002423	CAP 3300PF 100V 5% DM	2	C53,C56
13	1000061	CAP 8200PF 100V 10% MYLAR	1	G69
14	1001610	CAP .01UF 100V 20% DISC	29	C5,C9,C15,C16,C19,C20,C21,C29,C40,C45,C65,C66,C67,C68,C69,C70,C71,C72,C73,C74,C75,C76,C77,C78,C79,C80,C81,C82,C83
15	1002323	CAP .022UF 100V 10% MYLR	3	C24,C26,C44
16	1000049	CAP .027UF 100V 10% MYLR	2	C13,C35
17	1000030	CAP .1UF 100V 20% DISC	8	C2,C3,C32,C33,C58,C59,C63,C64
18	1010978-36	CAP .1UF 50V 10% CER	2	C10,C30
19	1002180	CAP .15UF 35V 20% TANT	2	C42,C43
20	1010279	CAP .47UF 25V 20% CER	1	C1
21	1009671	CAP .51UF 100V 5% MYLR	2	C14,C36
22	1001776	CAP 1UF 35V 10% TANT	3	C84,C85,C86
23	1009725	CAP 1.5UF 35V 10% TANT	2	C6,C38
24	1002627	CAP 2.2UF 20V 10% TANT	1	C49
25	1005306	CAP 6.8UF 35V 10% TANT	5	C8,C28,C45,C52,C55
26	1004812	CAP 15UF 20V 10% TANT	1	C41
27	1004814	CAP 47UF 20V 10% TANT	2	C54,C57
28	1000082	CAP 68UF 15V 10% TANT	2	C7,C27
29	1005572	CAP 150UF 6V 20% TANT	1	C39
30	1100114	DIODE D664	15	D4,D5,D6,D7,D10,D11,D12,D13,D14,D20,D21,D22,D23,D25,D26
31	1104860	IN746A 3.3VZ 5% .4W	1	D30
32	1100124	IN750A 4.7VZ 5% .4W	2	D9,D16
33	1102808	IN752A 5.6VZ 5% .4W	1	D24
34	1102421	IN753A 6.2VZ 5% .4W	2	D28,D29
35	1105796	IN4004 400V PIV 1A	6	D1,D2,D3,D17,D18,D19
36	1208941	CONN 40 PIN	3	J4,J5,J6
37	1209340	CONN #1-480459	1	J7
38	1209458	PIN SOCKET #61320-1	4	
39	1311064	RES 8.2 10W 5% WW	2	R1,R123
40	1301317	RES 10 1/4W 5% CC	2	R7,R103
41	1300229	RES 100 1/4W 5% CC	5	R33,R46,R159,R181,R187
42	1302380	RES 100 2W 5% CC	2	R182,R188
43	1309150-10	RES 200 1/2W 10% 82 PR	1	R130
44	1300271	RES 220 1/4W 5% CC	17	R6,R11,R27,R32,R61,R64,R66,R69,R74,R102,R107,R128,R156,R157,R161,R162,R193
45	1301425	RES 300 1/4W 5% CC	2	R15,R111
46	1300295	RES 330 1/4W 5% CC	5	R8,R83,R88,R104,R141
47	1300309	RES 390 1/4W 5% CC	2	R19,R115
48	1300308	RES 390 1/2W 5% CC	2	R165,R173
49	1300316	RES 470 1/4W 5% CC	10	R20,R118,R186,R167,R169,R170,R174,R175,R177,R178

50	1303048	RES 560 1W 5% CC	2	R9,R105
51	1303178	RES 620 1/4W 5% CC	2	R14,R110
52	1302872	RES 681 1/8W 1% MF	4	R43,R44,R45,R192
53	1305143	RES 825 1/8W 1% MF	2	R37,R95
54	1303114	RES 1K 1/8W 1% MF	4	R52,R93,R176,R179
55	1300385	RES 1K 1/4W 5% CC	34	R4,R10,R47,R50,R58,R62,R65,R67,R70,R72,R73,R75,R63,R66,R67,R68,R100,R106,R122,R125,R127,R128,R133,R137,R138,R160,R163,R164,R171,R172,R180,R183,R186,R189
56	1300391	RES 1.5K 1/4W 5% CC	4	R13,R57,R82,R108
57	1300398	RES 1.8K 1/4W 5% CC	2	R185,R190
58	1304833	RES 1.96K 1/8W 1% MF	4	R28,R30,R148,R149
59	1302388	RES 2K 1/4W 5% CC	9	R18,R17,R112,R114,R121,R124,R126,R132,R136
60	1309150-07	RES 2K 1/2W 10% 62 PR	1	R168
61	1300417	RES 2.2K 1/4W 5% CC	2	R56,R81
62	1300439	RES 3.3K 1/4W 5% CC	8	R12,R22,R23,R109,R118,R119,R150,R151
63	1305114	RES 3.48K 1/8W 1% MF	4	R21,R24,R117,R120
64	1309413	RES 3.63K 1/8W 1% MF	1	R131
65	1300444	RES 3.9K 1/4W 5% CC	4	R18,R113,R184,R191
66	1305324	RES 4.99K 1/8W 1% MF	3	R152,R155,R158
67	1304854	RES 5.11K 1/8W 1% MF	1	R147
68	1301874	RES 5.6K 1/4W 5% CC	1	R154
69	1304870	RES 6.81K 1/8W 1% MF	6	R41,R54,R55,R79,R80,R98
70	1305322	RES 7.5K 1/8W 1% MF	2	R59,R84
71	1303312	RES 10K 1/8W 1% MF	10	R35,R38,R39,R40,R42,R92,R94,R96,R97,R99
72	1300479	RES 10K 1/4W 5% CC	3	R2,R3,R140
73	1309143-10	RES 10K 3/4W 10% 76 PR	2	R25,R144
74	1300488	RES 12K 1/4W 5% CC	1	R153
75	1302391	RES 20K 1/4W 5% CC	1	R139
76	1309143-11	RES 20K 3/4W 10% 76 PR	2	R26,R143
77	1305346	RES 27K 1/4W 5% CC	1	R5
78	1302394	RES 30K 1/4W 5% CC	2	R48,R89
79	1303156	RES 34.8K 1/8W 1% MF	2	R134,R135
80	1302514	RES 39K 1/4W 5% CC	1	R145
81	1309143-13	RES 50K 3/4W 10% 76 PR	1	R142
82	1304839	RES 51K 1/4W 5% CC	7	R49,R51,R71,R76,R90,R101,R146
83	1310636	RES 82.5K 1/8W 1% MF	2	R60,R85
84	1303044	RES 100K 1/8W 1% MF	6	R29,R31,R34,R36,R77,R91
85	1300539	RES 120K 1/4W 5% CC	2	R194,R195
86	1302397	RES 180K 1/4W 5% CC	2	R53,R78
87	1509632	TRANSISTOR DEC 2007.8W NPN	2	Q2,Q10
88	1501913	TRANSISTOR 2N2906A 6W PNP	2	Q3,Q11
89	1509338	TRANSISTOR 6531B .31W NPN	11	Q1,Q4,Q9,Q12,Q20,Q24,Q25,Q27,Q30,Q33,Q36
90	1500409	TRANSISTOR 6534D .31W PNP	19	Q5,Q7,Q8,Q13,Q15,Q16,Q17,Q18,Q19,Q21,Q22,Q23,Q26,Q28,Q29,Q32,Q34,Q39,Q42
91	1510421	TRANSISTOR D44CB 30W (RED) NPN	3	Q35,Q37,Q40
92	1510414	TRANSISTOR D45CB 30W (GRN) PNP	5	Q6,Q14,Q31,Q38,Q41
93	1811034-01	INDUCTOR 47 MH	1	L1
94	1811110	CRYSTAL 2.304 MHZ	1	Y1
95	1810282	IC 301	5	E1,E2,E6,E23,E30
96	1900875	IC 306	1	E20

97	1909485	IC 380	1	E40
98	1910298	IC 741	8	E7,E8,E9,E10,E24,E25,E26,E27
99	1911038	IC 4024	1	E45
100	1911039	IC 4044	1	E44
101	1905575	IC 7400	3	E18,E35,E39
102	1905590	IC 7401	1	E12
103	1909004	IC 7402	2	E13,E15
104	1909686	IC 7404	2	E28,E34
105	1910741	IC 7406	1	E43
106	1905578	IC 7410	1	E42
107	1910236	IC 7426	2	E11,E18
108	1910878	IC 7427	1	E17
109	1905500	IC 7450	3	E5,E22,E31
110	1905547	IC 7474	3	E19,E32,E41
111	1910011	IC 7486	1	E14
112	1909054	IC 7493	2	E37,E38
113	1910436	IC 74123	4	E4,E21,E33,E36
114	1910645	IC 75452	2	E3,E29
115	5510315	HEAT SINK	4	
116	908010-1	SCREW,PPH 4-40 X 5/16	10	
117	9006557	NUT,KEP 4-40 X 1/4 X 1/16	10	
118	9006706	WASHER,NYLON #4	2	
119	9007791	LUG,SWAGE #1026-2	47	TP1 TO TP47

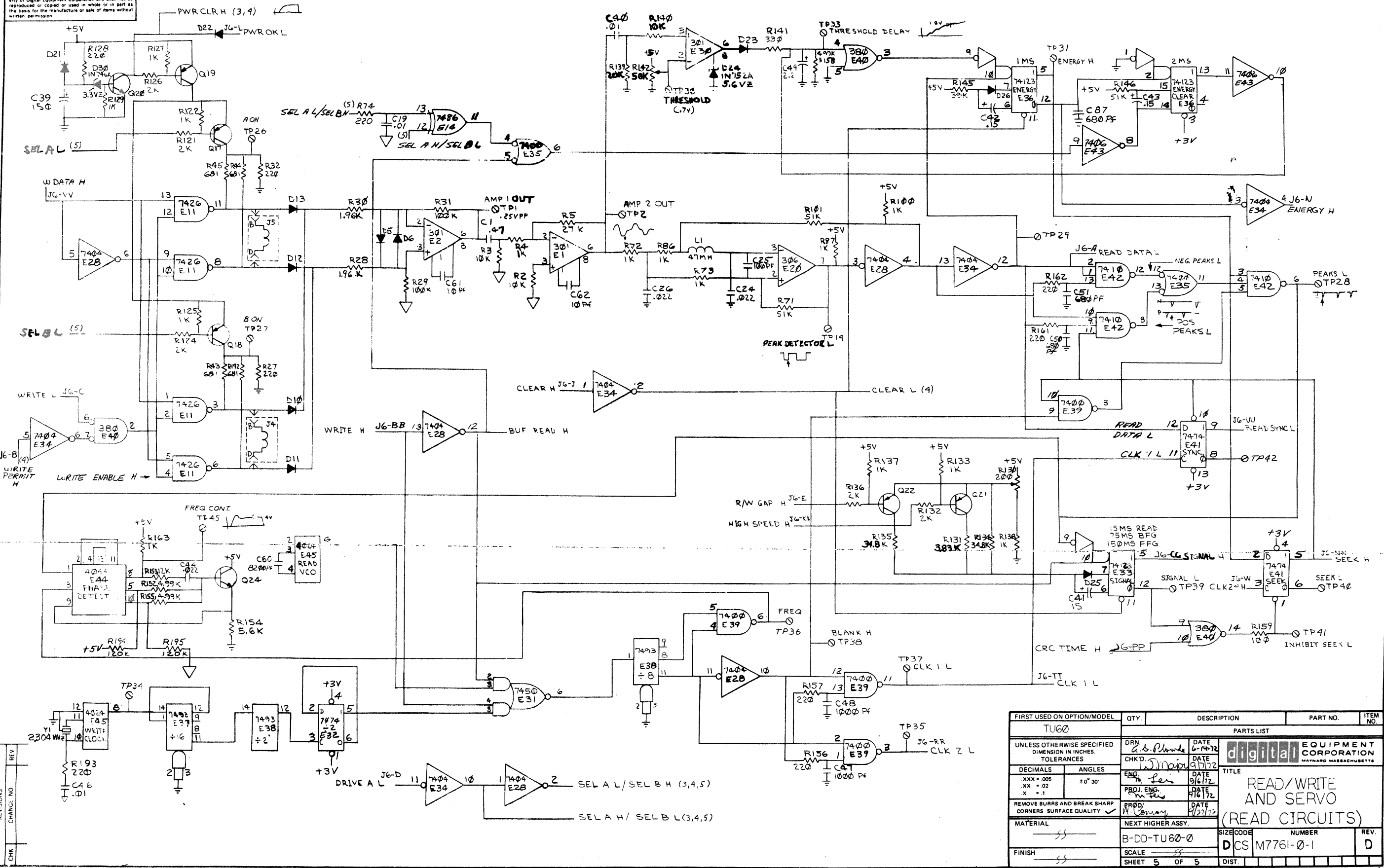
ITEM NO	PART NO	DESCRIPTION	QTY	REF DESIGNATION
FIRST USED ON OPTION/MODEL				
TU60				
PARTS LIST				
UNLESS OTHERWISE SPECIFIED DIMENSION IN INCHES TOLERANCES		DRN. F. CARBERRY	DATE 8-4-72	digital EQUIPMENT CORPORATION MAYNARD MASSACHUSETTS
DECIMALS .XXX - .006		CHK'D. W. MAJOR	DATE 9-18-72	
ANGLES ±0° 30'		ENG. M. LEIS	DATE 9-15-72	
		PROJ. ENG. M. LEIS	DATE 9-15-72	
REMOVE BURRS AND BREAK SHARP CORNERS SURFACE QUALITY		PROD. M. CONROY	DATE 9-27-72	TITLE READ/WRITE AND SERVO
MATERIAL	NEXT HIGHER ASSY.	B-DD-TU60-0		SIZE CODE DCS
FINISH	SCALE	SHEET 2 OF 5		NUMBER M7761-0-1
		DIST.		REV. D

REVISIONS  
NO. CHANGE NO. REV.





This drawing and specifications, herein, are the property of Digital Equipment Corporation and shall not be reproduced or copied or used in whole or in part as the basis for the manufacture or sale of items without written permission.



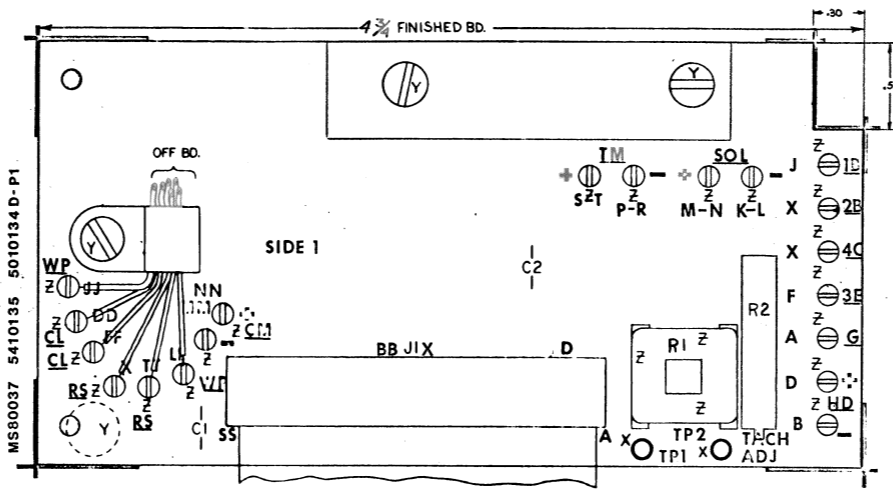
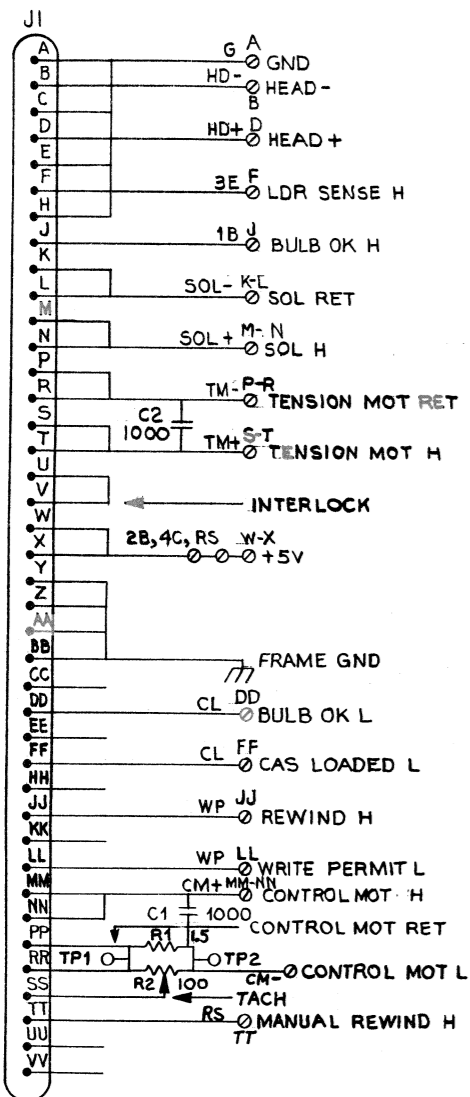
REV.	CHG.	NO.

FIRST USED ON OPTION/MODEL	QTY.	DESCRIPTION	PART NO.	ITEM NO.
TU60		PARTS LIST		
UNLESS OTHERWISE SPECIFIED DIMENSION IN INCHES TOLERANCES	DRN 6-14-72	DATE	digital EQUIPMENT CORPORATION MAYNARD MASSACHUSETTS	
DECIMALS .XXX = .005 .XX = .02 .X = .1	CHK'D W. J. [Signature]	DATE	TITLE READ/WRITE AND SERVO (READ CIRCUITS)	
REMOVE BURRS AND BREAK SHARP CORNERS SURFACE QUALITY	ENG. M. [Signature]	DATE	PROJ. ENG. M. [Signature]	
MATERIAL	PROD. M. [Signature]	DATE	NEXT HIGHER ASSY.	
FINISH			SCALE	
			SHEET 5 OF 5	
			DIST.	

This drawing and specifications, herein, are the property of Digital Equipment Corporation and shall not be reproduced or copied or used in whole or in part as the basis for the manufacture or sale of items without written permission.

**NOTES:**

- UNLESS OTHERWISE SPECIFIED:  
RESISTANCE IS IN OHMS,  
CAPACITANCE IS IN PICOFARADS.



IC TYPE	GND	+ 5V
GND AND 5V ARE USUALLY PIN 7 AND 14 RESPECTIVELY. EXCEPTIONS ARE STATED ABOVE.		
IC PIN LOCATIONS		

QTY	REF DESIGNATION	DESCRIPTION	PART NO.	ITEM NO.
1		TERMINATOR CASSETTE DRIVE ASSY	D-IA-5010135-0-0	11
2	TP1, TP2	SWAGE LUG	9008087	10
2	C1, C2	CAP 1000	DM 1000042	9
1	R1	RES 1.5 10W WIRE WOUND	1311112	8
1	R2	RES 100 3/4W 10% POT 76PR	1309143-04	7
1	J1	CONNECTOR 40 TERMINAL	1210073	6
19		SPLIT LUGS	9006735	5
REF		MODULE ECO HISTORY	8-MH-5410135-0-6	4
REF		ASSY/DRILLING HOLE LAYOUT	D-AH-5410135-0-5	3
REF		X-Y COORDINATE HOLE LOCATION	K-CO-5410135-0-4	2
1		ETCHED CIRCUIT BOARD	5010134	1

FIRST USED ON OPTION MODEL: TU60

ETCH BOARD REV: D

REVISIONS:

DRN	DATE	8-3-72
CHK'D	DATE	10/3/72
ENG	DATE	11/27/72
PROJ. ENG	DATE	10/3/72
PRDD	DATE	10/3/72

digital EQUIPMENT CORPORATION  
MAYNARD, MASSACHUSETTS

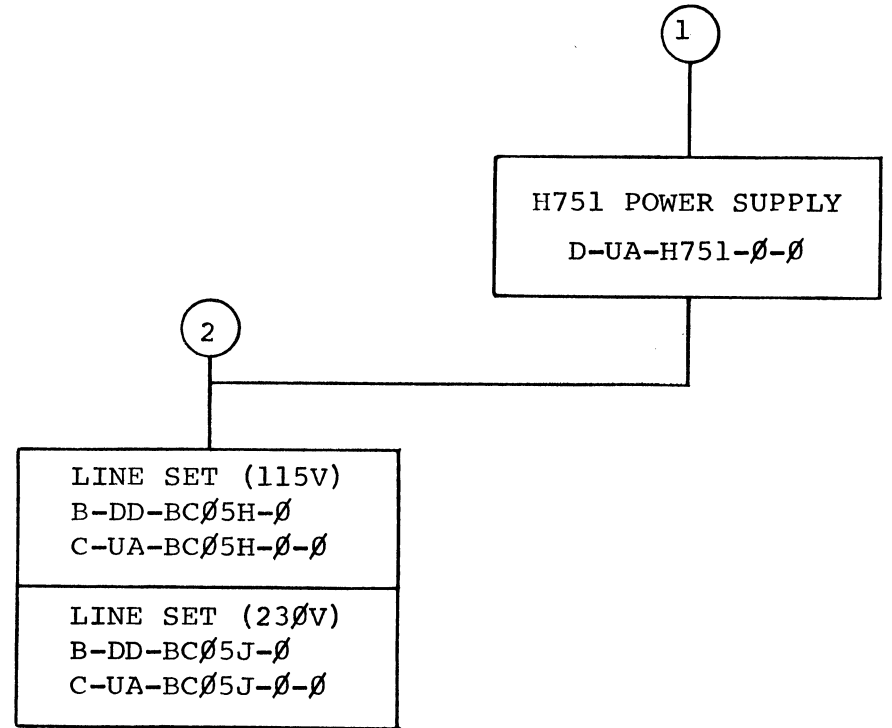
TITLE: TERMINATOR, CASSETTE DRIVE

SIZE CODE: DCS  
NUMBER: 5410135-0-1  
REV: C

SCALE: 2/1  
SHEET 1 OF 1

DEC NO.	EIA NO.	DEC NO.	EIA NO.
SEMICONDUCTOR CONVERSION CHART			





TITLE	SHEET 2 OF 3	SIZE	CODE	NUMBER	REV
H751 POWER SUPPLY		B	DD	H751-Ø	A

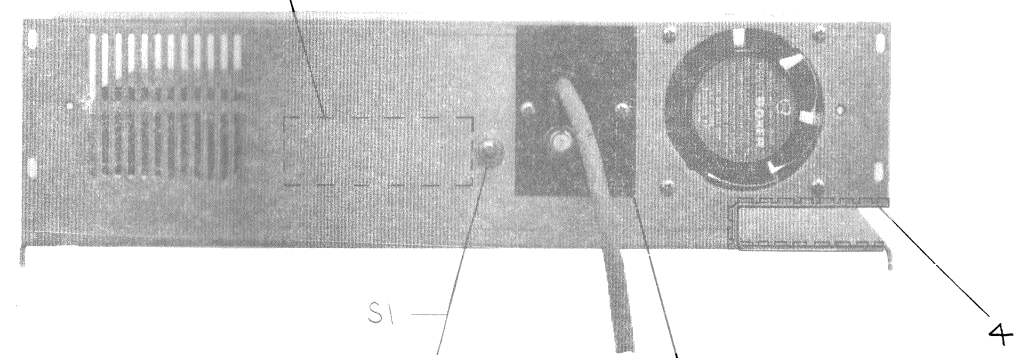
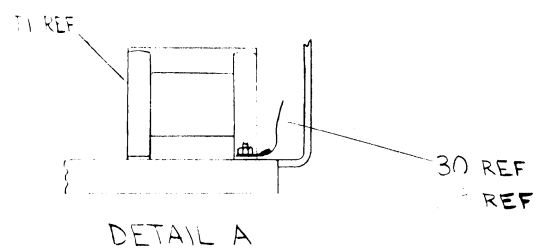
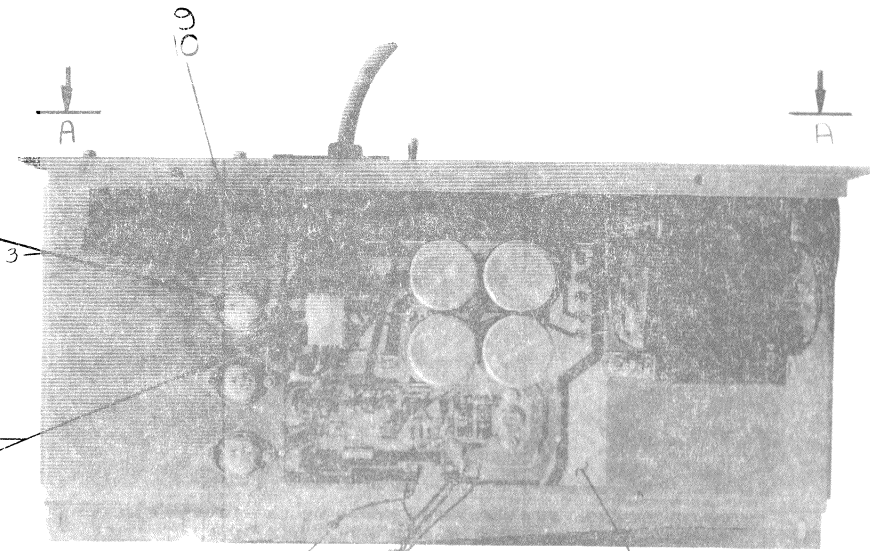
CUSTOMER PRINT SET				ELECTRICAL					CUSTOMER PRINT SET				MECHANICAL						
H751-Ø			MFG. SET	FIND NO.	DRAWING NO.	REV	NO OF SHT	DESCRIPTION	OPTION NO./FILE DATE	H751-Ø			MFG. SET	FIND NO.	DRAWING NO.	REV	NO OF SHT	DESCRIPTION	OPTION NO./FILE DATE
X				1	D-UA-H751-Ø-Ø	A	2	H751 POWER SUPPLY						1	D-UA-H751-Ø-Ø	A	2	H751 POWER SUPPLY	
X					A-PL-H751-Ø-Ø	A	2	H751 POWER SUPPLY (PL)							A-PL-H751-Ø-Ø	A	2	H751 POWER SUPPLY (PL)	
					E-IA-5310191-0-0		1	CHASSIS, POWER SUPPLY							E-IA-5310191-0-0		1	CHASSIS, POWER SUPPLY	
X					D-CS-H751-Ø-1	A	1	CIRCUIT SCHEMATIC H751											
X					D-CS-5410131-0-1	#	2	CIRCUIT SCHEMATIC											
C				2	B-DD-BCØ5H-Ø	#	3	LINE SET											
					C-UA-BCØ5H-Ø-Ø		1	LINE SET BCØ5H (115V)											
					C-UA-BCØ5J-Ø-Ø		1	LINE SET BCØ5J (230V)											

CUSTOMER PRINT SET CODES	X = PRINT OF DOCUMENT INCLUDED IN PRINT SET C = INCLUDES ALL PRINTS INDICATED ON DOCUMENT S = CONFIDENTIAL AUTHORIZED SIGNATURE REQUIRED	TITLE	H751 POWER SUPPLY	SHEET 3 OF 3	SIZE CODE	B DD	NUMBER	H751-Ø	REV	A
--------------------------	--	-------	-------------------	--------------	-----------	------	--------	--------	-----	---

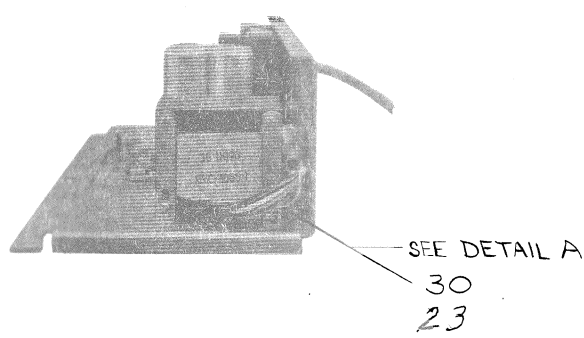
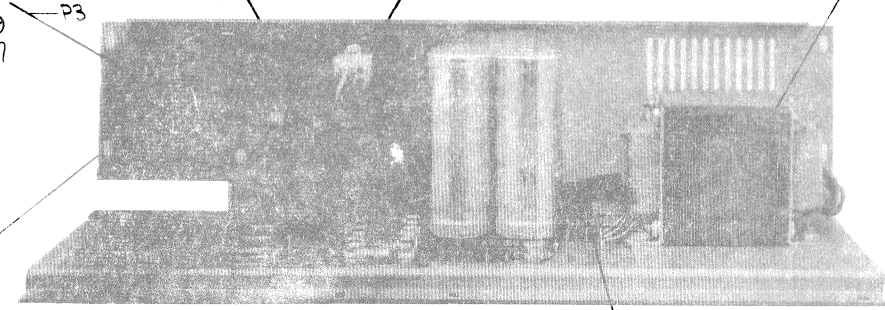
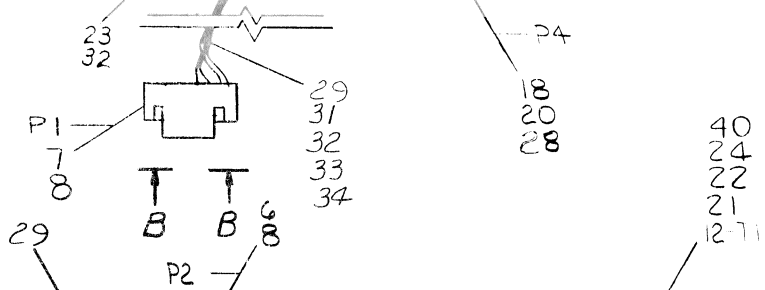


This drawing and specifications are the property of Digital Equipment Corporation and shall not be reproduced or copied or used in whole or in part as the basis for the manufacture or sale of items without written permission.

D  
C  
B  
A



VIEW A-A  
 ROTATED 180°



- NOTES:
1. MOUNT ITEM #38 (CASSETTE POWER SUPPLY) TO ITEM #1 (CHASSIS) BEFORE MOUNTING ITEMS #2, 11, 12
  2. USE ITEM #10 (TAPE) BETWEEN EACH OF FOUR LARGE CAPACITORS AS SHOWN
  3. ITEM #22 (COMPOUND) TO BE APPLIED TO BOTH SIDES OF ITEM #16 (WASHLR) BEFORE ASSEMBLY
  4. USE CRIMP TOOL #45575-1 FOR ITEM 35.

REV	DATE	BY	CHK
A	1/15/72	LARRY Z...	LARRY Z...

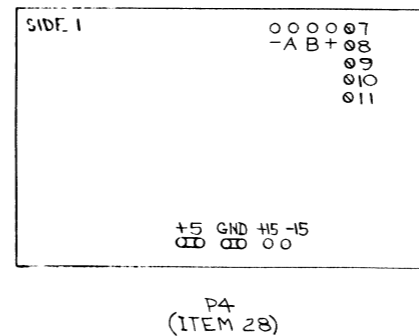
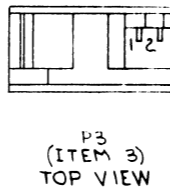
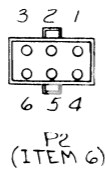
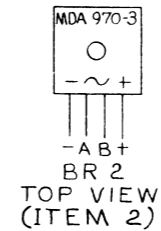
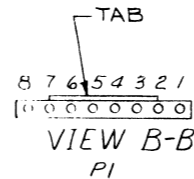
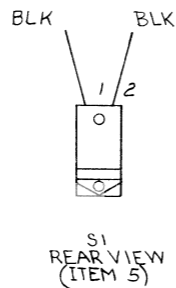
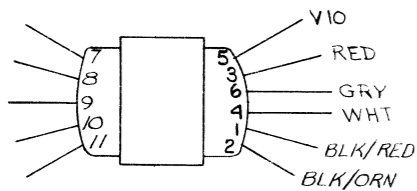
FIRST USED ON OPTION/MODEL	QTY.	DESCRIPTION	PART NO.	ITEM NO.
TUG0				
PARTS LIST				
UNLESS OTHERWISE SPECIFIED DIMENSION IN INCHES. TOLERANCES		DRN <i>Z. Carney</i>	DATE 9/25/72	 <b>digital</b> EQUIPMENT CORPORATION MAYNARD MASSACHUSETTS
DECIMALS	ANGLES	CHKR <i>W. Major</i>	DATE 10/25/72	
XXX = .005	±0° 30'	ENG. <i>Larry Nash</i>	DATE 10-25-72	
.XX = .02		PROJ. ENG. <i>W. Major</i>	DATE 10-25-72	
.X = .1		PROD. <i>Bob DeProspero</i>	DATE 10/26/72	
REMOVE BURRS AND BREAK SHARP CORNERS SURFACE QUALITY		NEXT HIGHER ASSY.		TITLE <b>H75I POWER SUPPLY</b>
MATERIAL SS		P-DD H75I-0	SIZE CODE DUA	NUMBER H75I-0-0
FINISH SS		SCALE NONE	SHEET 1 OF 2	REV. A

REV A  
 SEE COLOR  
 DUAH75I-0-0

This drawing and specifications herein are the property of Digital Equipment Corporation and shall not be reproduced or copied or used in whole or in part as the basis for the manufacture or sale of items without written permission.

### WIRE TABLE

ITEM NO	DESCRIPTION		FROM		TO		REMARKS	LENGTH (IN.)
	AWG	COLOR	CONN	WITH	CONN	WITH		
5	18	BLK	S1-1	—	P2-1	8		DO NOT CUT
5	18	BLK	S1-2	—	—	—		DO NOT CUT
12	18	BLK/RED	T1-1	35	—	—	SEE NOTE 4	15
12	18	BLK/ORN	T1-2	—	P2-6	8		18
12	18	VIO	T1-5	—	P2-1	9,10		18
12	18	RED	T1-3	—	P2-5	8		18
12	18	WHT	T1-4	—	P2-3	8		18
30	18	GRN	P2-2	8	GND	23	SEE DR TAIL A	16
12	18	GRY	T1-6	—	P3-2	9,10		18
12	18	—	T1-7	40	P4-7	SOLDER		1 1/4
12	18	—	T1-8	40	P4-8	SOLDER		1 1/4
12	18	—	T1-9	40	P4-9	SOLDER		1 1/4
12	18	—	T1-10	40	P4-10	SOLDER		1 1/4
12	18	—	T1-11	40	P4-11	SOLDER		1 1/4
31	18	RED	P4 - +5V	SOLDER	P1-4	8		16
33	18	ORN	P4 - +15V	SOLDER	P1-1	8		16
34	18	BLU	P4 - -15V	SOLDER	P1-2	8		16
32	18	BLK	P4 - GND	SOLDER	P1-3	8		16
32	18	BLK	35	—	P2-4	8	SEE NOTE 4	3
2	—	—	BR2-(+)	40	P4-(+)	SOLDER		1
2	—	—	BR2-(-)	40	P4-(-)	SOLDER		1
2	—	—	BR2-A	40	P4-A	SOLDER		1
2	—	—	BR2-B	40	P4-B	SOLDER		1



FIRST USED ON OPTION/MODEL	QTY.	DESCRIPTION	PART NO.	ITEM NO.
TU60				
PARTS LIST				
UNLESS OTHERWISE SPECIFIED DIMENSION IN INCHES TOLERANCES	DRN <i>[Signature]</i>	DATE 3/26/72	 digital EQUIPMENT CORPORATION MAYNARD, MASSACHUSETTS	
DECIMALS .005	CHK'D <i>[Signature]</i>	DATE 10/25/71		
.XX .02	ENG. <i>[Signature]</i>	DATE 10-25-72		
X .1	PROJ. ENG. <i>[Signature]</i>	DATE 1/1/72		
REMOVE BURRS AND BREAK SHARP CORNERS SURFACE QUALITY	PROD. <i>[Signature]</i>	DATE 10/26/72	TITLE H751 POWER SUPPLY	
MATERIAL	NEXT HIGHER ASSY.		SIZE CODE	NUMBER
FINISH	B-DD-H751-7		DUA	H751-0-0
SCALE NONE			SHEET 2 OF 2	REV A

BRUNING 40-107 1598B  
DQC FORM NO DRD 100-A

REV A  
NUMBER  
DUA H751-0-0

# DIGITAL EQUIPMENT CORPORATION

MAYNARD, MASSACHUSETTS

## PARTS LIST

MADE BY F. CARBERRY  
 DATE 9/19/72  
 ENG Larry Nalini  
 DATE 10/26/72

CHECKED W. MAJOR  
 DATE 10/6/72  
 PROD Bob Di Biase  
 DATE 10/26/72

SECTION 1  
 ISSUED SECT. 1

ITEM NO.	DWG NO. / PART NO.	DESCRIPTION	QUANTITY / VARIATION
1	E-IA-5310191-0-0	CHASSIS, POWER SUPPLY	1 1
2	1110208	DIODE ARRAY MDA970-3	1 1
3	1210719	FAN, BOXER 115V, 25-35 CUFT	1 1
4	9007036	GROMMET, CATERPILLAR	A/R A/R
5	1203376	SWITCH, TOGGLE SPST	1 1
6	1209351-06	CONNECTOR, MATE-N-LOCK 6 PIN	1 1
7	1209340-01	CONNECTOR, MATE-N-LOCK 8 PIN	1 1
8	1209378-01	PIN, MATE-N-LOCK	10 10
9	1210820-01	MINI-FASTAB, HOUSING #1-480417-0	2 2
10	1210820-02	MINI-FASTAB, PIN #60291-1	2 2
11	1505819	TRANSISTOR, 2N3055	3 3
12	1611096	TRANSFORMER, MMC 4565-1/T72105	1 1
13	9006012-1	SCR. #4-40 x 7/16, PHL PAN HD	6 6
14	9008864	<del>TAPE, DOUBLE COATED PRESSURE SENSITIVE</del>	<del>A/R A/R</del>
15	9006557	KEP NUT #4	6 6
16	9006721	WASHER, INSULATING	3 3
17	9006023-1	SCR, 6-32 x 7/16, PHL PAN HD	4 4
18	9006633	LOCK WASHER #6, INT TOOTH	2 2
19	9008185	KEP NUT #6	8 8
20	9006020-1	SCR, 6-32 x 1/4, PHL PAN HD	5 5
21	9006039-1	SCR, 8-32 x 1/2, PHL PAN HD	4 4
22	9006666	WASHER, FLAT, #8	4 4

TITLE H751 POWER SUPPLY

ASSY NO. D-UA-H751-0-0

SIZE CODE A PL

NUMBER H751-0-0

REV. A

ECO NO. H751-00001

SHEET 1 OF 2

DIST. 6

# DIGITAL EQUIPMENT CORPORATION

MAYNARD, MASSACHUSETTS

## PARTS LIST

MADE BY F. CARBERRY  
 DATE 9/19/72  
 ENG Larry Nalini  
 DATE 10/26/72

CHECKED W. MAJOR  
 DATE 10/6/72  
 PROD Bob Di Biase  
 DATE 10/26/72

SECTION 1  
 ISSUED SECT. 1

ITEM NO.	DWG NO. / PART NO.	DESCRIPTION	QUANTITY / VARIATION
23	9007634	CONN, SOLDERLESS	2 2
24	9006563	KEP NUT, #8	4 4
25	9007793-1	SCR, #6-32 x 9/16, PHL PAN HD	1 1
26	9006656	WASHER, FLAT, #6	1 1
27	9008268	COMPOUND, THERMAL JOINT	A/RA/R
28	D-CS-5410131-0-1	CASSETTE POWER SUPPLY	1 1
29	9007031	CABLE TIE, PANDUIT, SST 1 M	A/RA/R
30	9107360-55	WIRE, #18 AWG STRD, IPVC, GRN	A/RA/R
31	9107360-22	WIRE, #18 AWG, STRD, IPVC, RED	A/RA/R
32	9107360-00	WIRE, #18 AWG, STRD, IPVC, BLK	A/RA/R
33	9107360-33	WIRE, #18 AWG, STRD, IPVC, ORN	A/RA/R
34	9107360-66	WIRE, #18 AWG, STRD, IPVC, BLU	A/RA/R
35	9006782	WIRE SPLICE #14-#16 #34071	1 1
36	C-UA-BC05H-0-0	LINE CORD SET, 115VAC	1 1
37	C-UA-BC05J-0-0	LINE CORD SET, 230VAC	1 1
38	A-DC-5310297-0-0	H751-A DECAL (115V)	1 1
39	A-DC-5310298-0-0	H751-B DECAL (230V)	1 1
40	9107278-00	TUBING, BLACK, TFE #18 AWG	A/RA/R

TITLE H751 POWER SUPPLY

ASSY NO. D-UA-H751-0-0

SIZE CODE A PL

NUMBER H751-0-0

REV. A

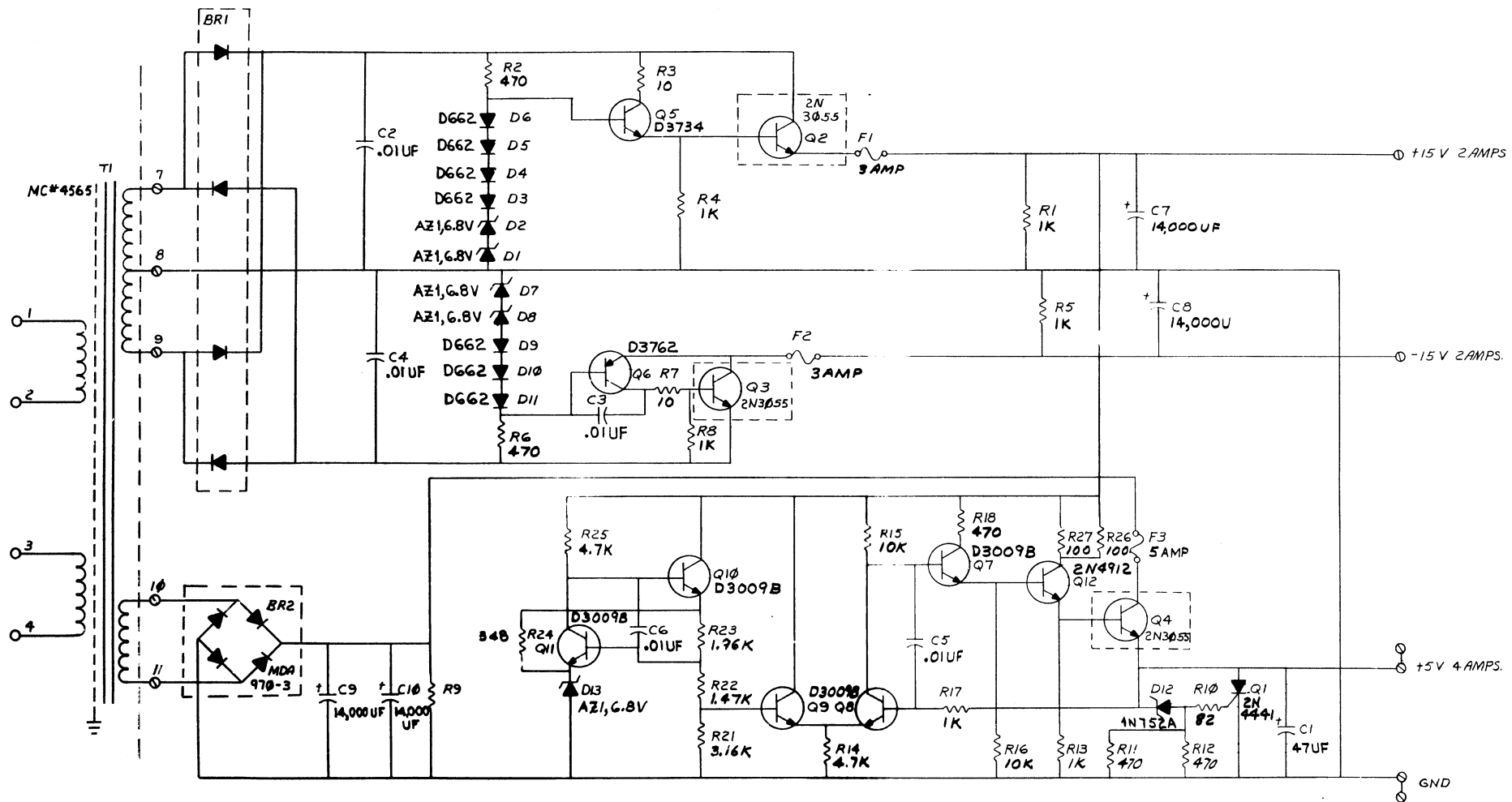
ECO NO. H751-00001

SHEET 2 OF 2

DIST. 6



This drawing and specifications, herein, are the property of Digital Equipment Corporation and shall not be reproduced or copied or used in whole or in part as the basis for the manufacture or sale of items without written permission.

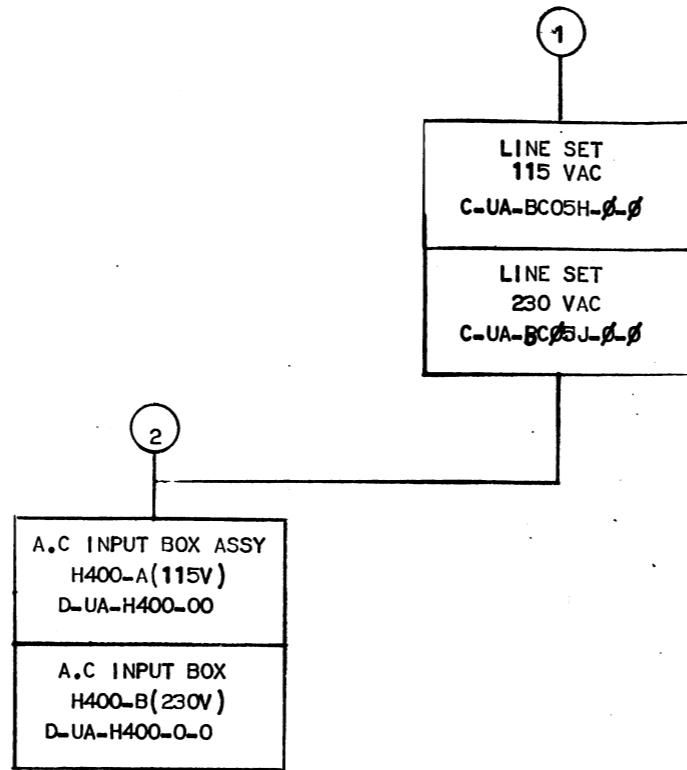


O INDICATES HOLES FOR DIODE BRIDGE  
Q2, Q3, Q4, BR2 & T1 ARE MOUNTED ON  
CHASSIS/HEAT SINK

QTY	REF DESIGNATION	DESCRIPTION	PART NO.	ITEM NO.
PARTS LIST				
ETCH BOARD REV B				
 <b>DIGITAL EQUIPMENT CORPORATION</b> <small>MAYNARD, MASSACHUSETTS</small>				
TITLE			CASSETTE POWER SUPPLY	
NEXT HIGHER ASSY			SCALE 1/1	
DEC NO.		EIA NO.		REV. B
SEMICONDUCTOR CONVERSION CHART				
SHEET 2 OF 2		DISTRIBUTION		

NUMBER 5410131-01  
 SIZE CODE DCS





TITLE	SHEET 2 OF 3	SIZE	CODE	NUMBER	REV
LINE SET		B	DD	BCØSH-Ø	

CUSTOMER PRINT SET				ELECTRICAL				CUSTOMER PRINT SET				MECHANICAL									
BCOE-11-1				MFG. SET	FIND NO.	DRAWING NO.	REV	NO OF SHT	DESCRIPTION	OPTION NO.	BCOE-11-1				MFG. SET	FIND NO.	DRAWING NO.	REV	NO OF SHT	DESCRIPTION	OPTION NO.
											X					1.	C-UA-BC05H-0-0		1	LINE SET 115V 7 AMP	BC05H
											X						C-UA-BC05J-0-0		1	LINE SET 230V 5 AMP	BC05J
X					2.	C-1A-5409824-0-0		1	POWER CONTROL BD 115V	H400						2.	D-UA-H400-0-0		1	AC INPUT BOX	H400
X						C-1A-5409825-0-0		1	POWER CONTROL BD 230V	H400							A-PL-H400-0-0		1	A.C INPUT BOX PARTS LIST	H400
																	D-1A-5309845-0-0		1	BOX	H400
																	C-MD-5309849-0-0		1	COVER	H400
																	A-DC-5309899-0-0		1	PWR CONTROL DECAL 115V	H400
																	A-DC-5309900-0-0		1	PWR CONTROL DECAL 230V	H400

TITLE	SIZE	CODE	NUMBER	REV
LINE SET	B	DD	BC05H-0	
SHEET 3	OF 3			

This drawing and specifications, herein, are the property of Digital Equipment Corporation and shall not be reproduced or copied or used in whole or in part as the basis for the manufacture or sale of items without written permission. 1972

NOTES:

1. CONNECT ITEM #1 (POWER CORD) AND ITEM #2 (AC INPUT BOX) PER CIRCUIT SCHEMATIC.
2. FOR INSTALLATION USE HEYCO #29 STRAIN RELIEF PLIERS

D

C

B

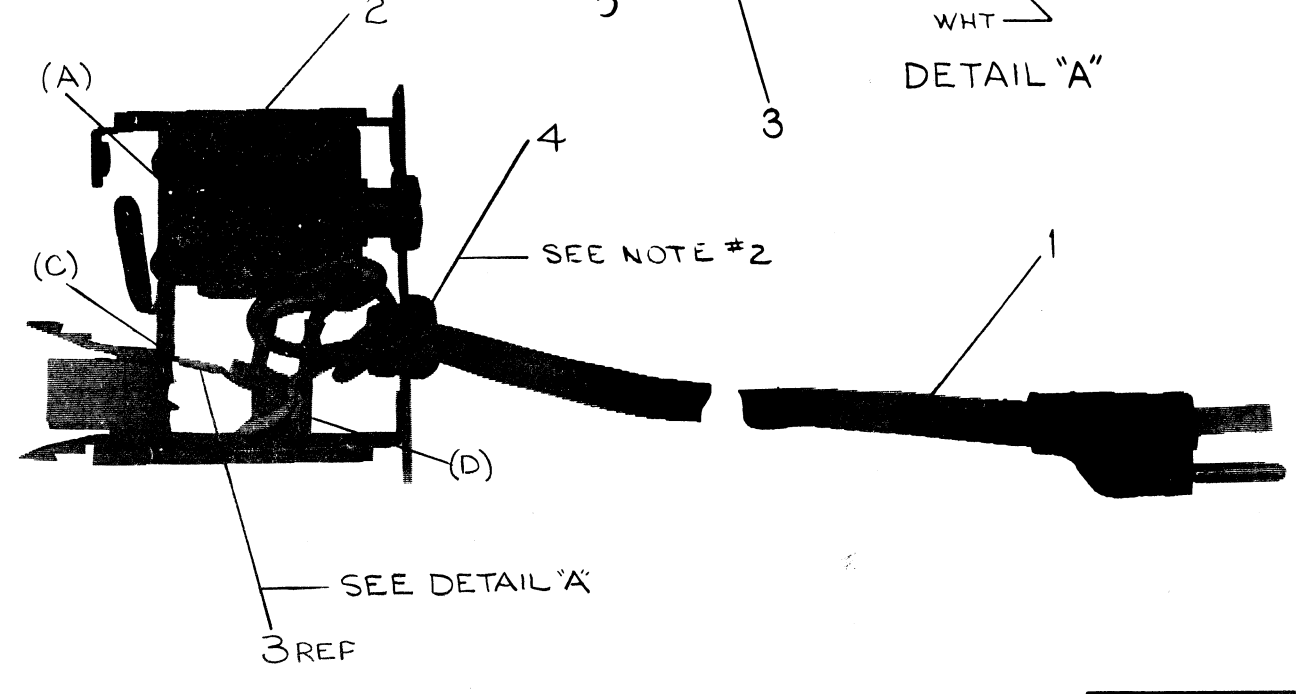
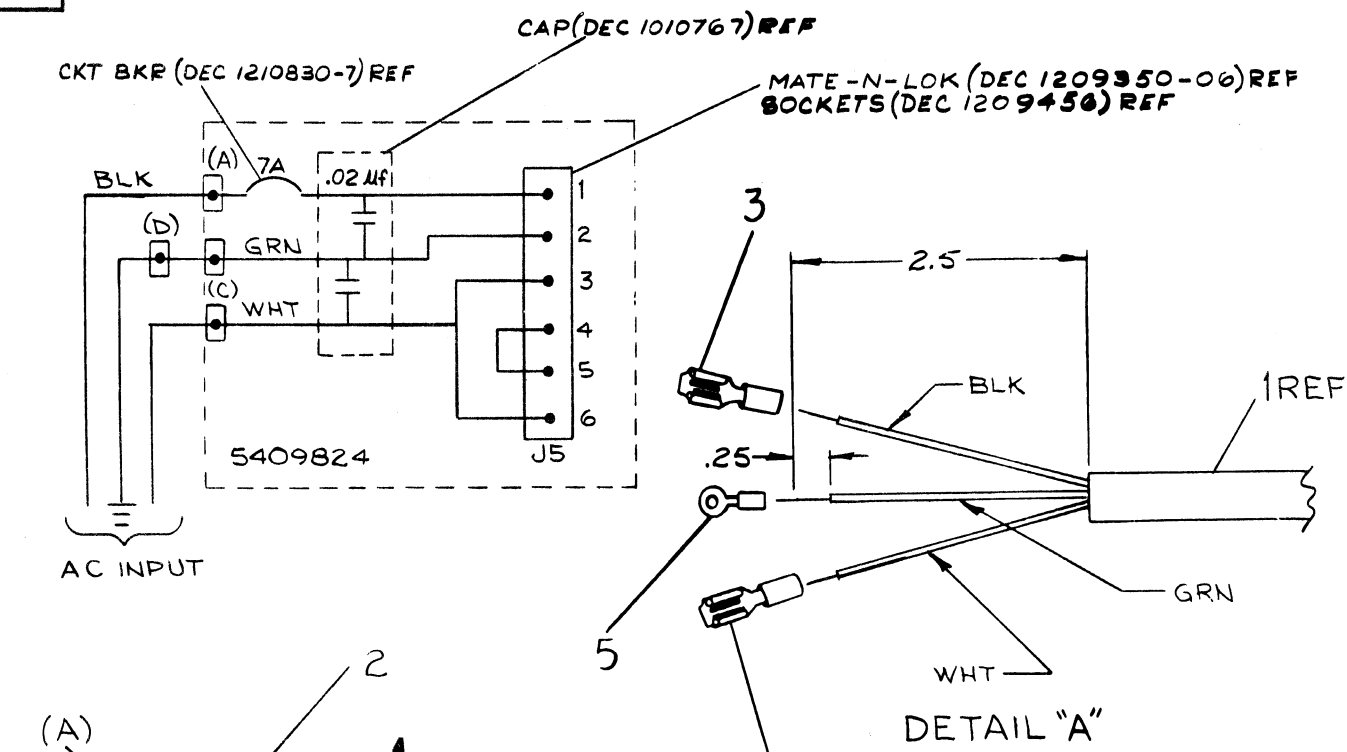
A

D

C

B

A



SHOWN WITHOUT COVER

1	SOLDER CONN ARKLESS	9007929-0	5
1	STRAIN RELIEF SR-6N3-4	9008492-2	4
2	SOLDERLESS CONN. ARKLESS	9007919	3
1	AC INPUT BOX H400A	D-UA-H400-0-0	2
1	POWER CORD 120V	170015-6	1

FIRST USED ON OPTION/MODEL	QTY.	DESCRIPTION	PART NO.	ITEM NO.
11/05				
PARTS LIST				
UNLESS OTHERWISE SPECIFIED DIMENSION IN INCHES. TOLERANCES		DRN <i>T. Guillen</i>	DATE 12-27-71	<p>digital EQUIPMENT CORPORATION MAYNARD, MASSACHUSETTS</p> <p>TITLE LINE SET 115V AC 7 AMP</p>
DECIMALS	ANGLES	CHK'D <i>Portance</i>	DATE 1-4-72	
.XXX = .005	±0° 30'	ENG. <i>David DeMunillo</i>	DATE 1-4-72	
.XX = .02		PROJ. ENG. <i>Russell H. Hays</i>	DATE 1-7-72	
.X = .1		PROD. <i>RK Peterson</i>	DATE 1/2/72	
REMOVE BURRS AND BREAK SHARP CORNERS SURFACE QUALITY ✓		NEXT HIGHER ASSY.		
MATERIAL				
FINISH		SCALE		
		SHEET	OF	

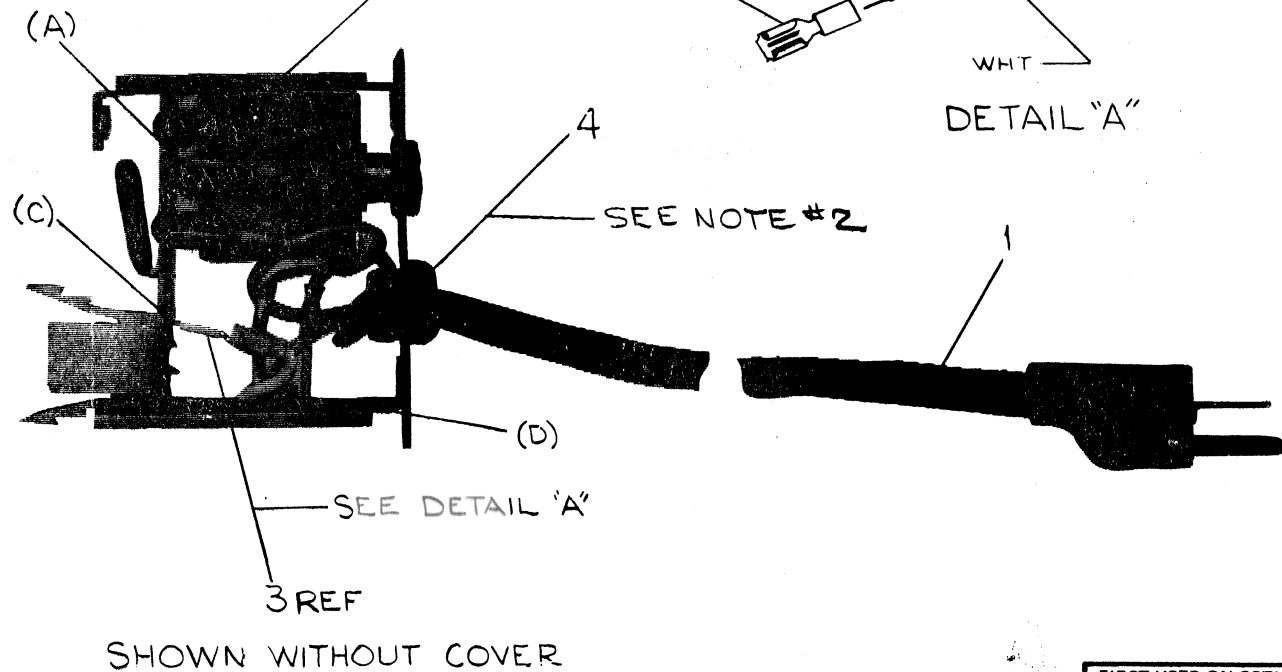
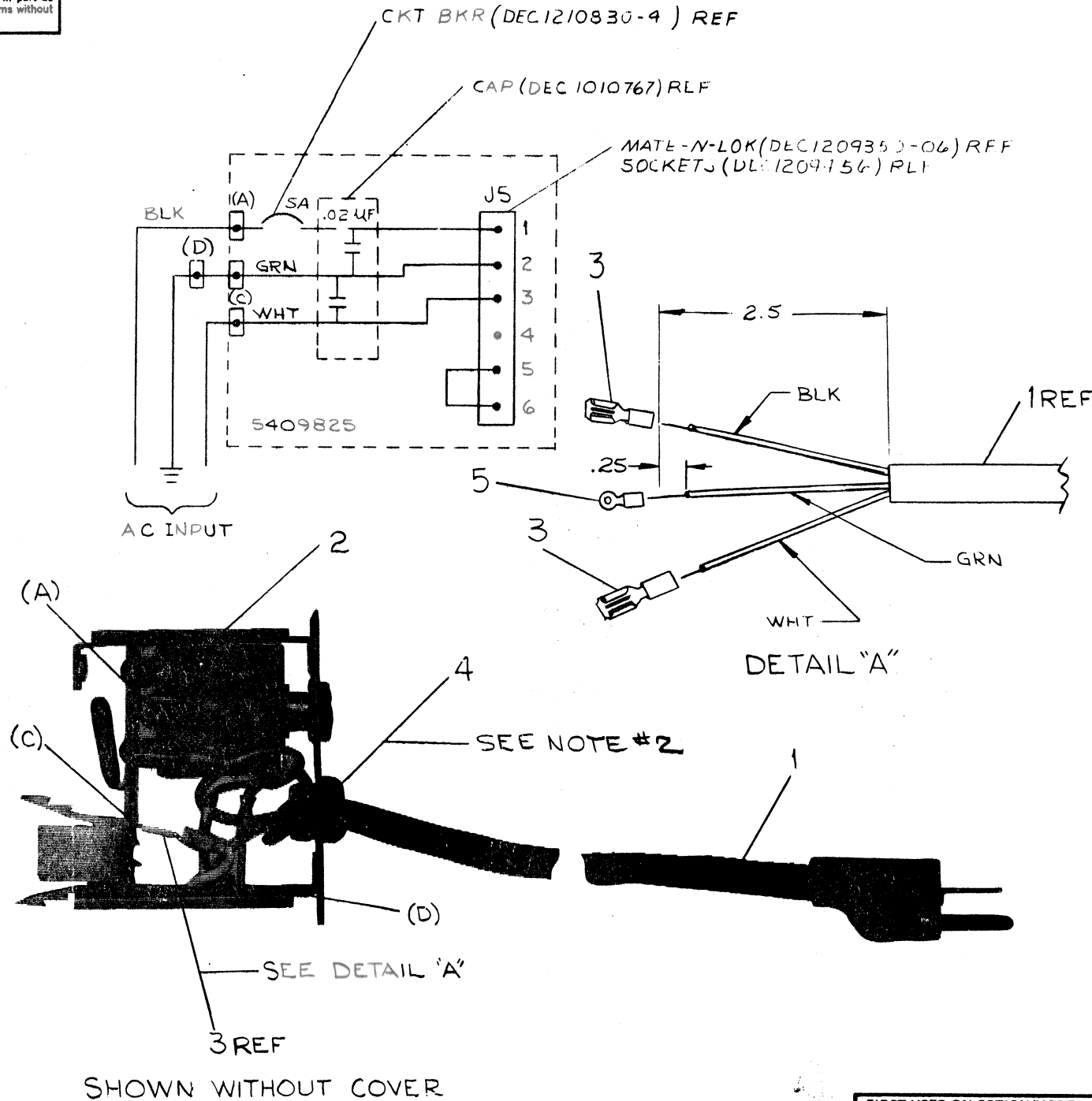
REVISIONS	CHANGE NO.	REV.
CHK	BC058H-00001	A
	GM-Gavin 3-28-72	
	R. WOLFF	
	3-29-72	
	BC05H-00002	B
	W. Tonne 5-13-72	
	DEMORANVILLE	
	David DeMunillo 5/1/72	
	H400-00002	C
	R. BURTON	
	5-31-72	
	BC05H-00003	E
	W. Tonne 10-30-72	
	R. BURTON	
	11-2-72	

REV. D  
NUMBER BC05H-0-0  
SIZE CODE CUA

This drawing and specifications, herein, are the property of Digital Equipment Corporation and shall not be reproduced or copied or used in whole or in part as the basis for the manufacture or sale of items without written permission, 1972

NOTES:

- CONNECT ITEM #1 (POWER CORD) AND ITEM #2 (AC INPUT) PER CIRCUIT SCHEMATIC.
- FOR INSTALLATION USE HAYCO #29 STRAIN RELIEF PLIERS.



1	SOLDER CONN ARKLESS	9007929-0	5
1	GROMMET HEYCO SR6N3-4	9008492-2	4
2	SOLDER CONN ARKLESS	9007919	3
1	AC INPUT BOX H4ØØB	D-UA-H4ØØ-Ø-Ø	2
1	POWER CORD 240V	1700016-6	1

FIRST USED ON OPTION/MODEL	QTY.	DESCRIPTION	PART NO.	ITEM NO.
11/Ø5				
PARTS LIST				
UNLESS OTHERWISE SPECIFIED DIMENSION IN INCHES. TOLERANCES		DRN <i>T. Guillin</i>	DATE 12-27-71	<p>digital EQUIPMENT CORPORATION MAYNARD MASSACHUSETTS</p> <p>TITLE LINE SET 230V AC 4 AMP</p>
DECIMALS	ANGLES	CHK'D <i>D. Fontaine</i>	DATE 1-8-72	
.XXX = .005	±0° 30'	ENG. <i>David De Marco</i>	DATE 1-7-72	
.XX = .02		PROJ. ENG. <i>Russ Hardy</i>	DATE 1-7-72	
.X = .1		PROD. <i>R.K. Peterson</i>	DATE 1/7/72	
REMOVE BURRS AND BREAK SHARP CORNERS SURFACE QUALITY ✓		MATERIAL	NEXT HIGHER ASSY.	
FINISH		SCALE		SIZE CODE C UA
		SHEET 1 OF 1		NUMBER BCØ5J-Ø-Ø
				REV. D

REV.	CHANGE NO.	REV.
A	BCØ5J-00001	A
B	H400-00002	B
C	BCØ5J-00002	C
D	BCØ5J-00003	D

REVISIONS

WOLFF

R. BURTON

R. BURTON

R. BURTON

R. BURTON

R. BURTON

R. BURTON

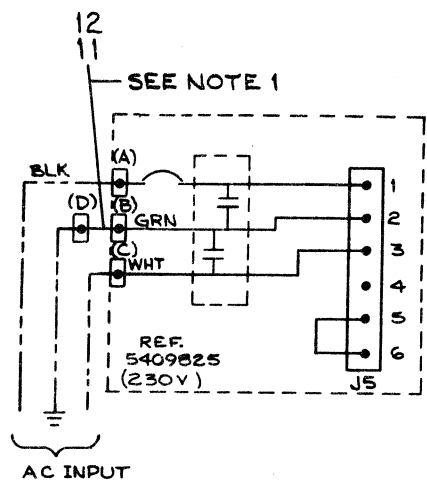
R. BURTON

This drawing and specifications, herein, are the property of Digital Equipment Corporation and shall not be reproduced or copied or used in whole or in part as the basis for the manufacture or sale of items without written permission. 1972

3 0-0-005H vna 2 1

LEGEND	
NUMBER	VARIATION
H400-A	115V
H400-B	230V

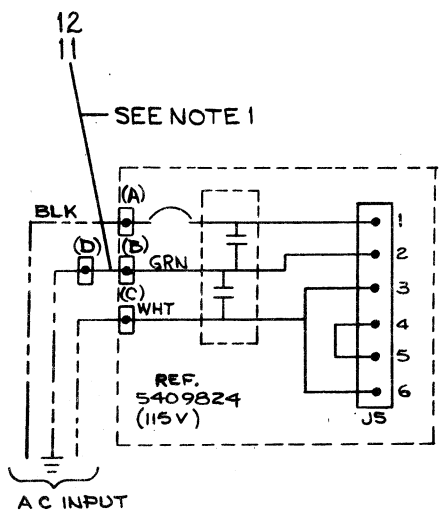
- NOTES:
- ITEM #11 (WIRE) AND TWO OF ITEM #12 (FASTON TABS) ARE TO BE CONNECTED FROM POINT D TO POINT B.
  - FOR LINE CORD INSTALLATION (115V) SEE DWG. C-UA-BC05H-0-0 FOR (230V) SEE DWG. C-UA-BC05J-0-0



SEE NOTE 1

AC INPUT

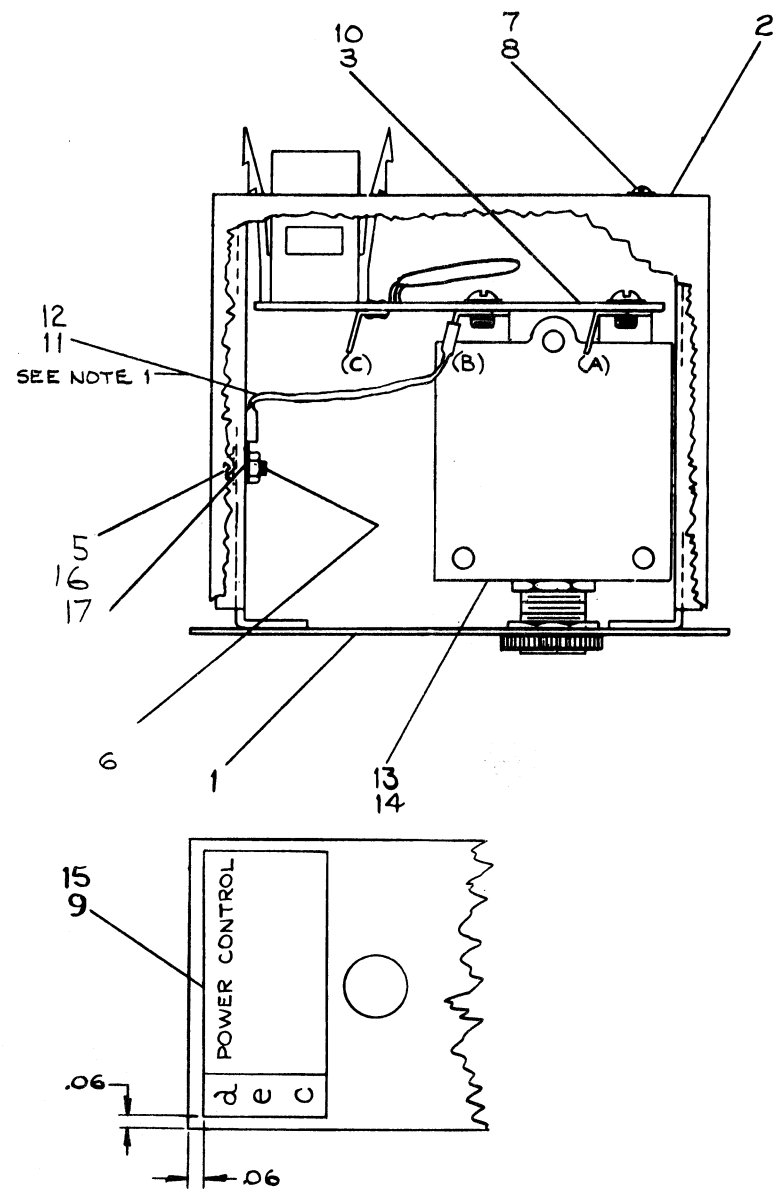
SEE NOTE 2



SEE NOTE 1

AC INPUT

SEE NOTE 2



REV.	CHANGE NO.	DATE	BY	CHK.
A	H400-00002	5-25-72	R. BURTON	
B	H400-00003	5-31-72	R. BURTON	
C	H400-00004	11-9-72	R. BURTON	
D	H400-00005	12-21-72	R. BURTON	
E	H400-00006	1-23-73	R. BURTON	

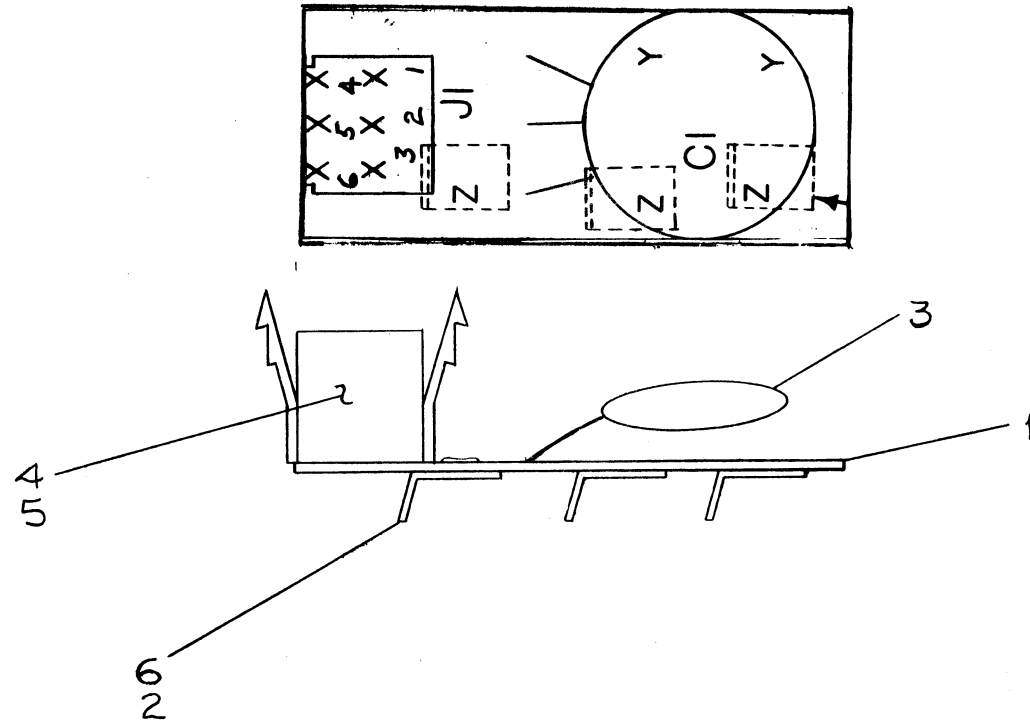
FIRST USED ON OPTION/MODEL	QTY.	DESCRIPTION	PART NO.	ITEM NO.
D-UA-BC05H-0-0				
PARTS LIST				
UNLESS OTHERWISE SPECIFIED DIMENSION IN INCHES. TOLERANCES		DRN. T. Quiller 12-23-71	DATE	EQUIPMENT CORPORATION MAYNARD MASSACHUSETTS
DECIMALS	ANGLES	CHKD. J. Peters 12-71	DATE	
.XXX = .005	± 0° 30'	ENG. J. Peters 1-4-72	DATE	
.XX = .02		PROJ. ENG. R. Peters 1-7-72	DATE	
REMOVE BURRS AND BREAK SHARP CORNERS SURFACE QUALITY		PROJ. R. Peters 1-7-72	DATE	TITLE <b>AC INPUT BOX ASSY</b>
MATERIAL		PROJ. R. Peters 1-7-72	DATE	
FINISH		NEXT HIGHER ASSY.		SIZE CODE
		D-UA-BC05H-0-0		NUMBER
		SCALE		DUA H400-0-0
		SHEET	OF	REV. C
		DIST.	G	



This drawing and specifications, herein, are the property of Digital Equipment Corporation and shall not be reproduced or copied or used in whole or in part as the basis for the manufacture or sale of items without written permission.

**NOTES:**

1. FOR CIRCUIT SCHEMATIC REFER TO DWG D-UA-H400-0-0
2. ETCHED BOARD #5009821 MUST BE U.L. APPROVED. MANUFACTURER'S U.L. NUMBER LOCATION IS SHOWN ON AH DRAWING.



QTY.	REF DESIGNATION	DESCRIPTION	PART NO.	ITEM NO.
		ASSY/DRILLING HOLE LAYOUT	D-AH-5409824-05	REF
3		FASTON TAB	9008219	6
6		P.C. SOCKETS FEMALE	1209456	5
1	J1	MATE-N-LOCK 6-PIN	1209350-06	4
1	C1	CAP INPUT .02MF	1010767	3
3		EYELET # GS4-5	9009000	2
		ETCHED CIRCUIT BD	5009821	1
		MODULE ECO HISTORY	B-MH-5409824-0-6	REF
		X-Y COORDINATE HOLE LOCATION	K-CO-5409824-0-0	REF

FIRST USED ON OPTION/MODEL H400 A		PARTS LIST	
UNLESS OTHERWISE SPECIFIED DIMENSION IN INCHES. TOLERANCES		DRN. <i>T. Quillin</i> DATE 12-8-71	 <b>digital</b> EQUIPMENT CORPORATION MAYNARD MASSACHUSETTS
DECIMALS      ANGLES		CHK'D <i>R. Peterson</i> DATE 1-9-72	
XXX - .005 .XX - .02 .X - .1	± 0° 30'	ENG. <i>David DeMott</i> DATE 1-4-72	TITLE <b>POWER CONTROL BOARD (115V)</b>
REMOVE BURRS AND BREAK SHARP CORNERS SURFACE QUALITY ✓		PROJ. ENG. <i>Ronald Peterson</i> DATE 1-6-72	
MATERIAL — / — / —		PROD. <i>R.K. Peterson</i> DATE 1/7/72	
FINISH — / — / —		NEXT HIGHER ASSY. C-UA-H400-0-0	SIZE CODE <b>C IA</b>
		SCALE — / — / —	NUMBER <b>5409824-0-0</b>
		SHEET 1 OF 1	REV. <b>B</b>
		DIST. <b>6</b>	

REVISIONS	CHANGE NO.	REV.
1	5409824-00001	A
2	<i>Ed Noile</i> 2-1-72	
3	R. WOLFF	
4	5409824-00002	B
5	<i>R. Burton</i> 5/22/72	
6	R. BURTON	
7	<i>R. Burton</i>	

D

C

B

A

D

C

B

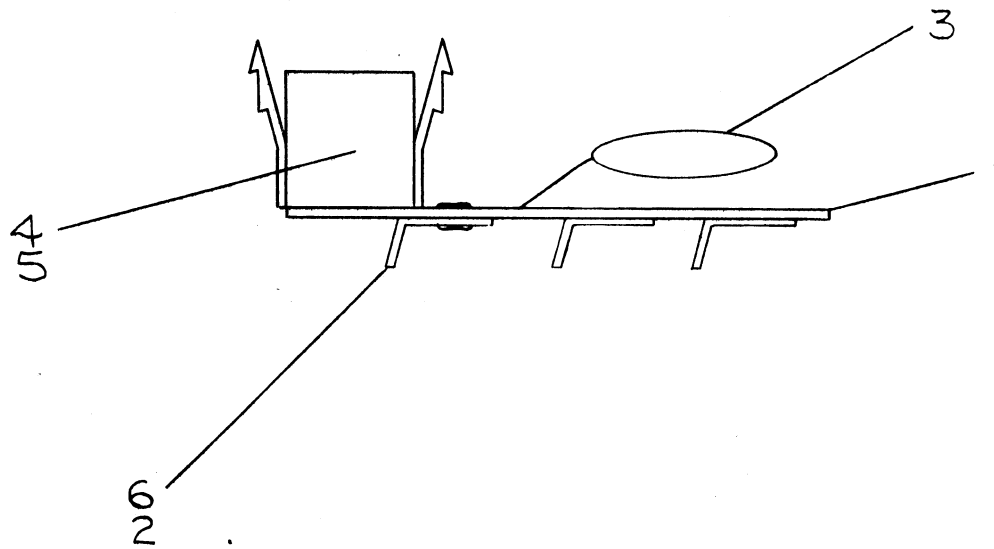
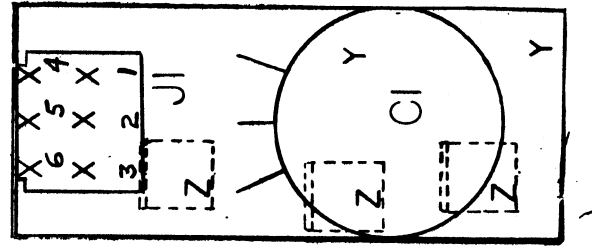
A

REV. NUMBER  
C IA 5409824-0-0 B

This drawing and specifications, herein, are the property of Digital Equipment Corporation and shall not be reproduced or copied or used in whole or in part as the basis for the manufacture or sale of items without written permission.

NOTES:

- FOR CIRCUIT SCHEMATIC REFER TO DWG D-UA-H400-0-0.
- ETCHED BOARD # 5009822 MUST BE U.L. APPROVED. MANUFACTURER'S U.L. NUMBER LOCATION IS SHOWN ON AN DRAWING.



QTY.	REF DESIGNATION	DESCRIPTION	PART NO.	ITEM NO.
		ASSY/DRILLING HOLE LAYOUT	D-AH-5409825-0-5	REF
3		FASTON TAB	9008219	6
6		P.C. SOCKETS MALE	1209456	5
1	J1	6-PIN MATE-N-LOCK	1209350-06	4
1	C1	CAP. INPUT .02UF	1010767	3
3		EYELET # 654-5	9009000	2
1		ETCHED CIRCUIT BOARD	5009822	1
		MODULE ECO HISTORY	B-MH-5409825-0-6	REF
		X-Y COORDINATE HOLE LOCATION	KCO-5409825-0-4	REF

FIRST USED ON OPTION/MODEL		PARTS LIST	
H400 B			
UNLESS OTHERWISE SPECIFIED DIMENSION IN INCHES. TOLERANCES		DRN <i>T. Quinn</i>	DATE 12-9-71
DECIMALS	ANGLES	CHK'D <i>J. Lintner</i>	DATE 1-4-72
.XXX - .005	± 0° 30'	ENG.	DATE 1-4-72
.XX - .02		PROJ. ENG. <i>R. Peterson</i>	DATE 1-7-72
.X - .1		PROD. <i>R. Peterson</i>	DATE 1/7/72
REMOVE BURRS AND BREAK SHARP CORNERS SURFACE QUALITY ✓		TITLE POWER CONTROL BOARD (230V)	
MATERIAL	NEXT HIGHER ASSY.	SIZE CODE	NUMBER
FINISH	C-UA-H400-0-0	C IA	5409825-0-0
	SCALE	REV.	A
	SHEET 1 OF 1	DIST.	

REVISIONS	CHANGE NO.	REV.
CHK	5409825-00001	A
R. WOLFF		
Rev. 1/14/72 3-2-2		

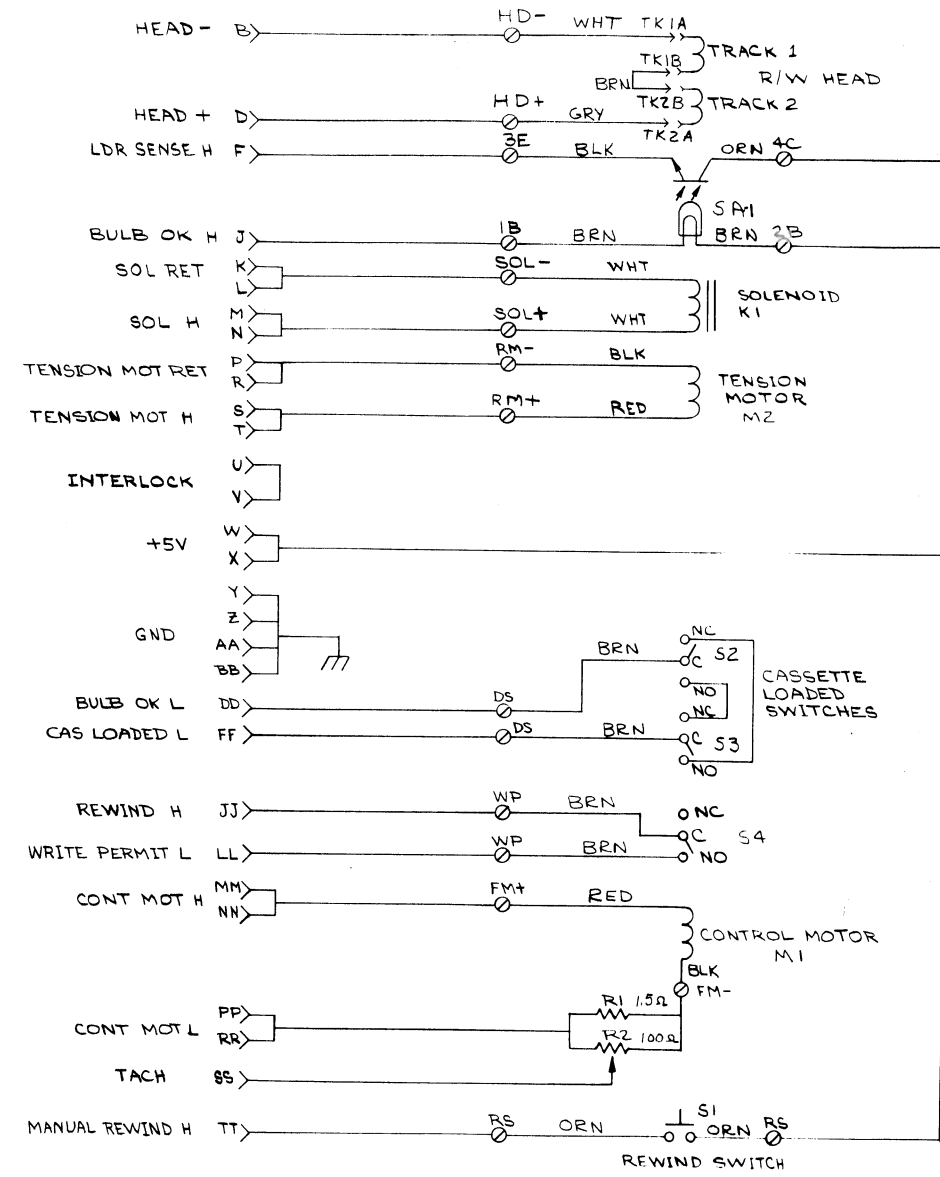
REV. A  
NUMBER  
C IA 5409825-0-0  
SIZE CODE

This drawing and specifications, herein, are the property of Digital Equipment Corporation and shall not be reproduced or copied or used in whole or in part as the basis for the manufacture or sale of items without written permission.

COPYRIGHT © 1972, DIGITAL EQUIP. CORP.

DM-0-0901 DW 2

NOTES:  
 1. SWITCHES ARE SHOWN WITH "CAS LOADED" AND "WRITE PERMIT" ACTIVATED.  
 2. CONNECT WIRE (ITEMS #44 & #45) TO HEAD (ITEM #20) USING CONNECTOR PINS SUPPLIED WITH HEAD (ITEM #20). SEE DETAIL "A".



FIRST USED ON OPTION/MODEL	QTY.	DESCRIPTION	PART NO.	ITEM NO.
TU60				
PARTS LIST				
UNLESS OTHERWISE SPECIFIED DIMENSION IN INCHES TOLERANCES	DRN 7/13/72	DATE 10/13/72	 digital EQUIPMENT CORPORATION MAYNARD MASSACHUSETTS	
DECIMALS .XXX = .005 .XX = .02 .X = .1	CHK'D W. Major	DATE 12/17/72		
ANGLES ±0° 30'	ENG. M. Lee	DATE 12/17/72	TITLE <b>CASSETTE DRIVE WIRING DIAGRAM</b>	
REMOVE BURRS AND BREAK SHARP CORNERS SURFACE QUALITY ✓	PROJ. ENG. M. Lee	DATE 12/27/72		
MATERIAL	SS	PROD. M. Lee	DATE 11/6/72	
FINISH	SS	NEXT HIGHER ASSY. B-DD-TU60-0		
		SCALE	SHEET 1 OF 1	
		DIST.		

BRUNING 40-522 15840	REV.
DEC FORM NO DRD 102-B	CHANGE NO.
	CHK
	REVISIONS

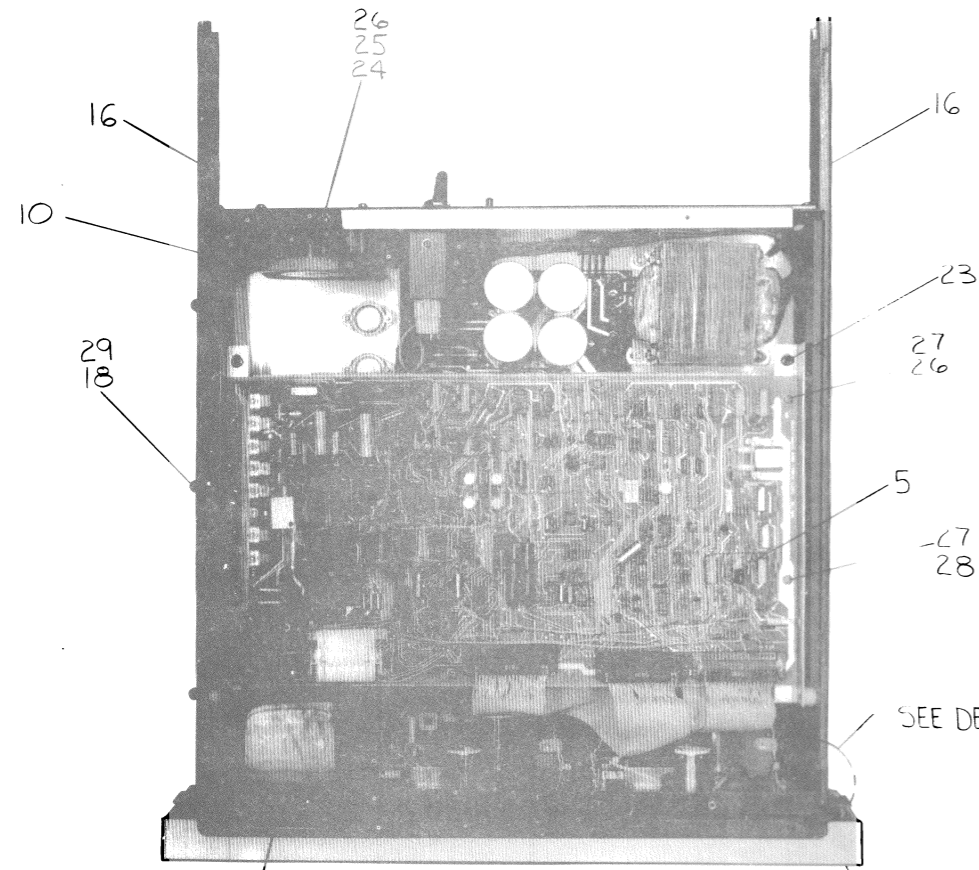
This drawing and specifications herein are the property of Digital Equipment Corporation and shall not be reproduced or copied or used in whole or in part as the basis for the manufacture or sale of items without written permission.

COPYRIGHT © 1972 DIGITAL EQUIPMENT CORPORATION

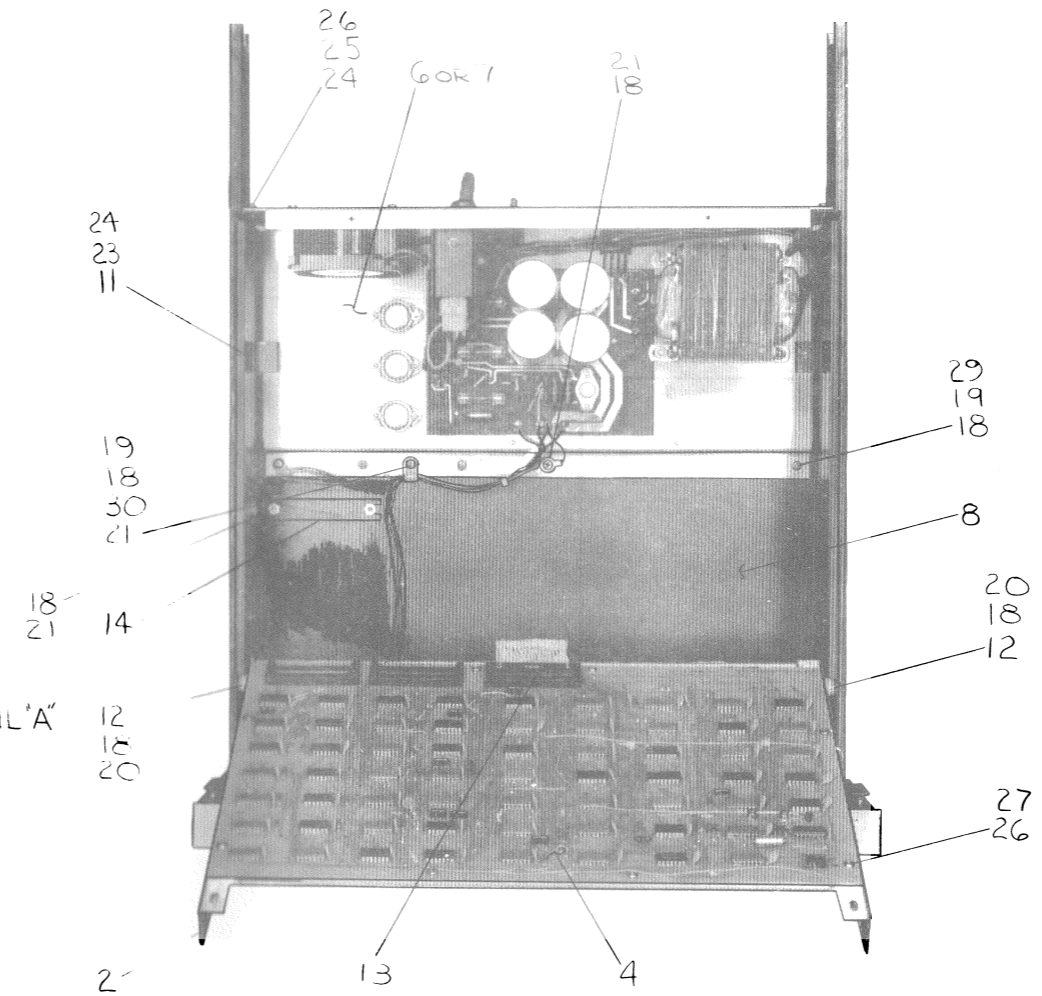
LEGEND	
NUMBER	VARIATION
TU60-AA	15 VAC
TU60-AB	230 VAC

NOTES:

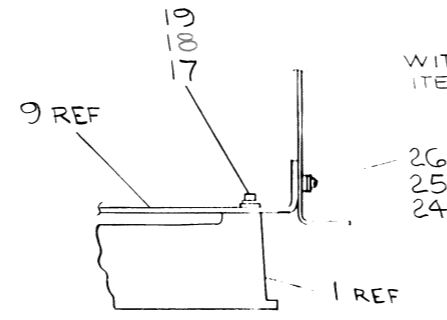
1. DO NOT INSTALL DRIVE MTG SCRS & WASHERS AT LOWER FAR LEFT AND LOWER FAR RIGHT CORNER OF DRIVE ASSEMBLIES.



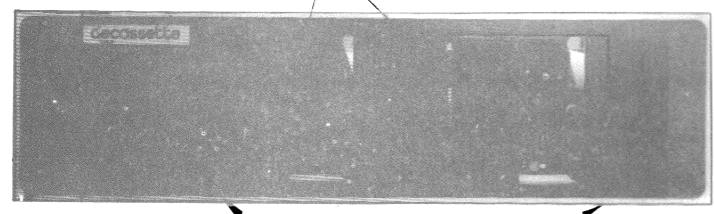
TOP VIEW



TOP VIEW WITH ITEM #10 (COVER) REMOVED & ITEM #2 (CARD FRAME ASSY) IN UP POSITION



DETAIL 'A' (ITEM #3 REMOVED)



SEE NOTE 1

REV	CHG NO.	DATE	BY
1	00007	2-15-73	V. DEMPSEY
2			

FIRST USED ON OPTION/MODEL	QTY.	DESCRIPTION	PART NO.	ITEM NO.	
PARTS LIST					
UNLESS OTHERWISE SPECIFIED DIMENSION IN INCHES TOLERANCES	DRN. <i>[Signature]</i> DATE 12/20/72	CHK'D. <i>[Signature]</i> DATE 1/11/73	 <b>digital</b> EQUIPMENT CORPORATION <small>MAYNARD MASSACHUSETTS</small>		
DECIMALS	xxx 005	ANGLES			±0° 30'
xx 02	ENG. <i>[Signature]</i> DATE 1/15/73	PROJ. ENG. <i>[Signature]</i> DATE 1/15/73			TITLE
x 1	REMOVE BURRS AND BREAK SHARP CORNERS SURFACE QUALITY ✓	PROD. <i>[Signature]</i> DATE 1/15/73			TU60 UNIT ASSY
MATERIAL	NEXT HIGHER ASSY.		SIZE CODE	NUMBER	
FINISH	SCALE		DUA	TU60-0-0	
SHEET 1 OF 2		DIST.		REV. A	

This drawing and specifications, herein, are the property of Digital Equipment Corporation and shall not be reproduced or copied or used in whole or in part as the basis for the manufacture or sale of items without written permission.

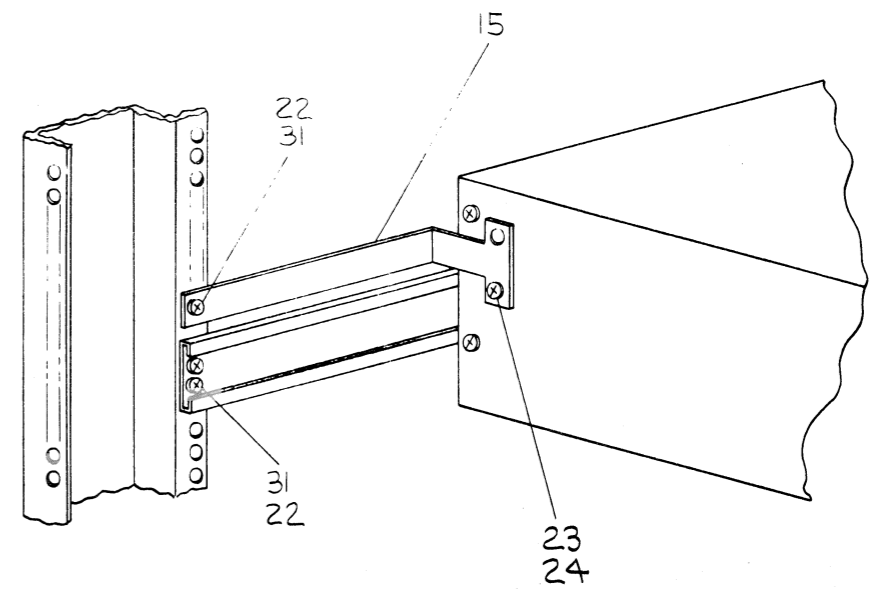
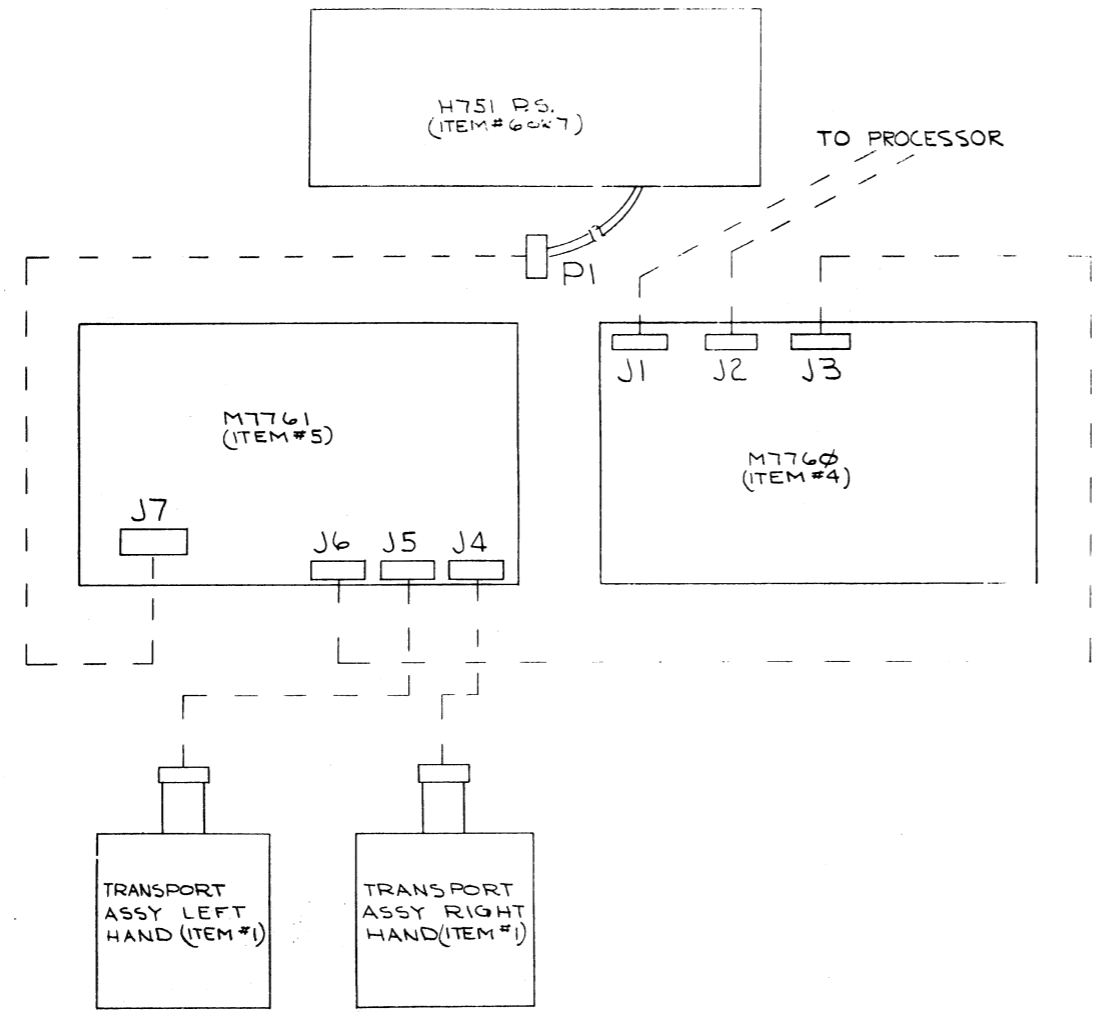
COPYRIGHT © 1972 DIGITAL EQUIPMENT CORPORATION.

### ASSY CONNECTIONS

FROM		TO	
ITEM NO	DESCRIPTION	ITEM NO	DESCRIPTION
6027	H751 P.S.-PI	5	M7761-J7
1	TRANSPORT ASSY LEFT	5	M7761-J5
1	TRANSPORT ASSY RIGHT	5	M7761-J4

### CABLE CONNECTIONS

ITEM NO	FROM	TO
13	M7761-J6	M7760-J3



LOCATION OF SHIPPING BRACKETS (BOTH SIDES) WHEN UNIT IS SUPPLIED IN CABINET

FIRST USED ON OPTION/MODEL	QTY.	DESCRIPTION	PART NO.	ITEM NO.
PARTS LIST				
UNLESS OTHERWISE SPECIFIED DIMENSION IN INCHES TOLERANCES	DRN <i>[Signature]</i>	DATE 12/2/72	<b>digital</b> EQUIPMENT CORPORATION MAYNARD, MASSACHUSETTS  TITLE <b>TU60 UNIT ASSY</b>	
DECIMALS	CHK'D <i>[Signature]</i>	DATE 11/17/73		
ANGLES	ENG <i>[Signature]</i>	DATE 11/17/72		
XXX - .005 XX - .02 X - .1	PROJ. ENG. <i>[Signature]</i>	DATE 11/17/73		
REMOVE BURRS AND BREAK SHARP CORNERS SURFACE QUALITY	PROD. <i>[Signature]</i>	DATE 11/17/73	NEXT HIGHER ASSY.	
MATERIAL	FINISH		SIZE CODE	NUMBER
<i>[Symbol]</i>	<i>[Symbol]</i>		DUA	TU60-0-0
FINISH	SCALE	SHEET	DIST.	REV
<i>[Symbol]</i>	2 OF 2	2 OF 2		A

REVISIONS  
 CHANGE NO.  
 REV.

REV. A  
 NUMBER DUA TU60-0-0  
 SIZE CODE DUA TU60-0-0

DIGITAL EQUIPMENT CORPORATION  
MAYNARD, MASSACHUSETTS  
**PARTS LIST**

MADE BY G. FLANDERS  
DATE 12/20/72  
CHECKED W. MAJOR  
DATE 1/3/73  
SECTION 1  
ISSUED SECT. 1

DWG NO. / PART NO.	DESCRIPTION
D-IA-7-09014-0-0	TRANSPORT ASSY (TU6Ø)
D-IA-7-10604-0-0	CARD FRAME ASSY
D-IP-7-10556-0-0	BEZEL ASSY
D-C-7-76Ø-Ø-1	TU6Ø LOGIC
D-C-7-761-Ø-1	REWRITE AND SERVO
D-UA-H751-A	H751 POWER SUPPLY (115V)
D-UA-H751-B	H751 POWER SUPPLY (230V)
E-IA-7-109943-0-0	CHASSIS (TU6Ø)
D-IA-7-09990-0-0	PLATE, CHASSIS, FRONT (TU6Ø)
E-MD-7-09941-0-0	COVER, CHASSIS
C-MD-7-09904-0-0	BRACKET, SYMMETRICAL
B-MD-7-09932-0-0	BUSHING, PIVOT
D-UA-7-10Ø5L-Ø-Ø	CABLE, JUMPER
C-M-7-09479-0-0	PLATE, PRESSURE
C-MD-7-10690-0-0	BRACKET, SHIPPING
D-PS-7-109154-0-0	CHASSIS-TRAK (PAIR)
7 900637-8	SCR, SOCKET HEAD #8-32 X 3/8 LG
8 100	LOCKWASHER, #8 INT TOOTH
9 9006661	WASHER, FLAT .437 X .187 ID X .032 THK
Ø 900794-1	SCR, PHL PAN HD #8-32 X 11/16 LG
1 900603-1	SCR, PHL PAN HD #8-32 X 5/16 LG
2 900779	NUT, #10-32 TINNERMAN

TITLE TU6Ø UNIT ASSY  
ASSY NO. D-UA-TU6Ø-Ø-Ø  
SHEET 1 OF 2  
SIZE CODE A PL  
NUMBER TU6Ø-Ø-Ø  
REV. ECO NO. A TU60-00007

ITEM NO.	DWG NO. / PART NO.	DESCRIPTION	QUANTITY / VARIATION
	TU6Ø-AA		
	TU6Ø-AB		
2	2		
1	1		
1	1		
1	1		
1	1		
1	1		
1	1		
1	1		
1	1		
2	2		
2	2		
1	1		
1	1		
2	2		
1	1		
6	6		
19	19		
14	14		
2	2		
8	8		
6	6		

DIGITAL EQUIPMENT CORPORATION  
MAYNARD, MASSACHUSETTS  
**PARTS LIST**

MADE BY G. FLANDERS  
DATE 12/20/72  
CHECKED W. MAJOR  
DATE 1/3/73  
SECTION 1  
ISSUED SECT. 1

DWG NO. / PART NO.	DESCRIPTION
23 9006021-1	SCR, PHL PAN HD #6-32 X 5/16 LG
24 9006633	LOCKWASHER #6 INT TOOTH
25 9006656	WASHER, FLAT .312 X .156 ID X .032 THK
26 9006020-1	SCR, PHL PAN HD #6-32 X 1/4 LG
27	LOCTITE #75
28 9009041-1	SCR, NYLON #6-32 X 1/4 LG
29 9006035-1	SCR, PHL PAN HD #8-32 X 1/4 LG
30 9007080	CABLE CLAMP 3/16"
31 9006071-3	SCR, PHL TRUSS HD #10-32 X 3/8 LG

ITEM NO.	DWG NO. / PART NO.	DESCRIPTION	QUANTITY / VARIATION
	TU6Ø-AA		
	TU6Ø-AB		
8	8		
19	19		
15	15		
29	29		
A/RA/R			
1	1		
10	10		
1	1		
6	6		

TITLE TU6Ø UNIT ASSY  
ASSY NO. D-UA-TU6Ø-Ø-Ø  
SHEET 2 OF 2  
SIZE CODE A PL  
NUMBER TU6Ø-Ø-Ø  
REV. ECO NO. A

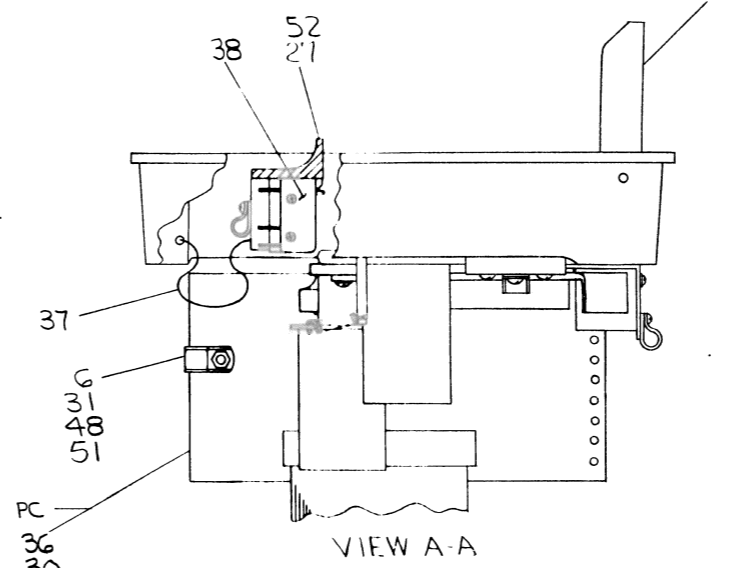
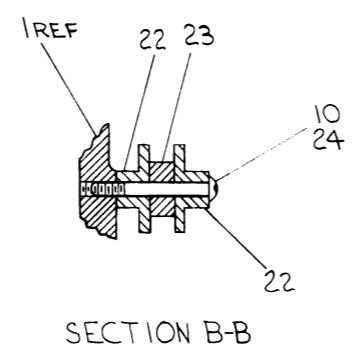
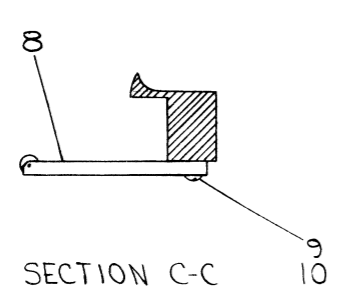
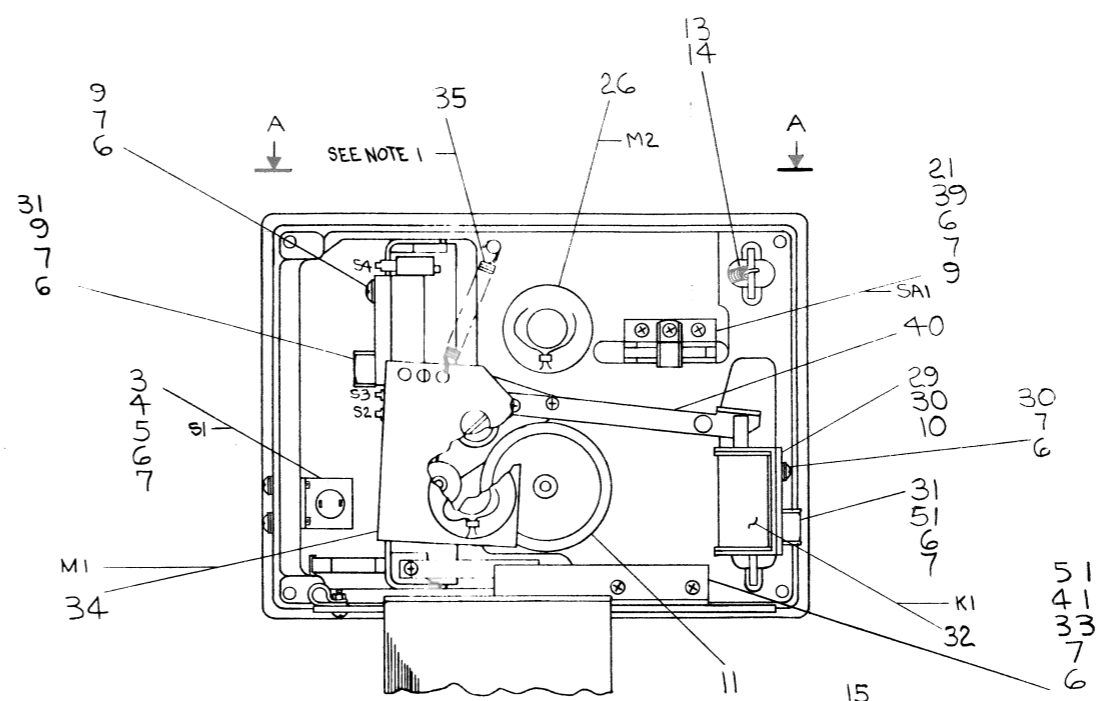
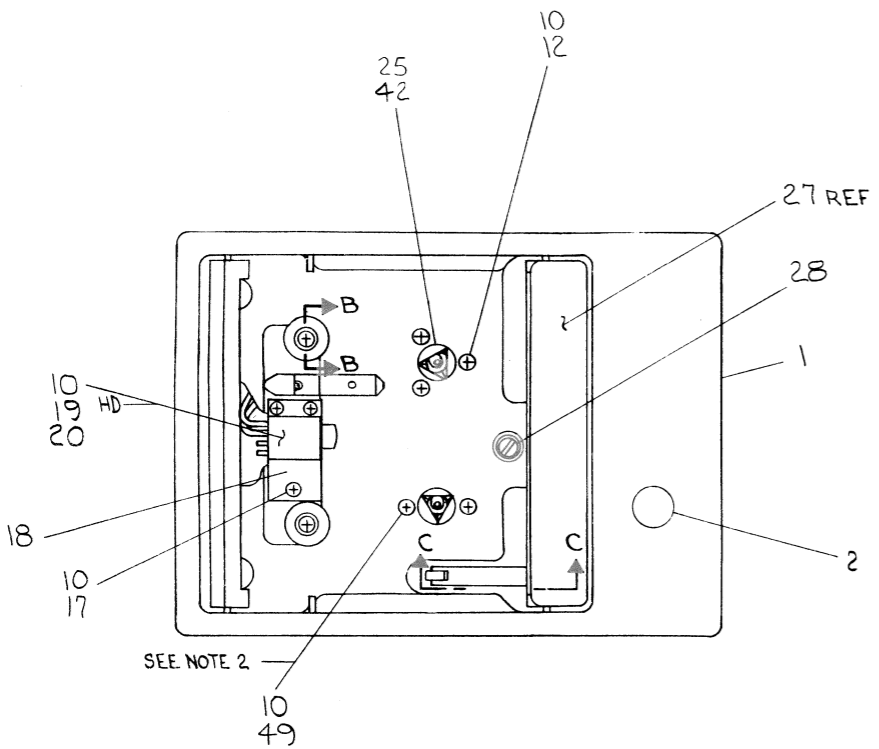
This drawing and specifications, herein, are the property of Digital Equipment Corporation and shall not be reproduced or copied or used in whole or in part as the basis for the manufacture or sale of items without written permission.

COPYRIGHT © 1972, DIGITAL EQUIPMENT CORPORATION

0-0-7106002 001 2

NOTES:

1. SET SPRING TENSION 45/55 GRAMS MEASURED ON ROCKER ASSY LEVER AT POSITION WHERE SOLENOID STRIKES LEVER. TRANSPORT MUST BE IN OPERATING POSITION.
2. TIGHTEN SCR (ITEM #49) TO 6 INCH-POUNDS OF TORQUE.
3. TRIM LEADS OF ITEM #50 (CAP) TO .38 LONG BEFORE SOLDERING TO ITEM #36.
4. SEE DETAILS B, C & D TO LOCATE ITEM #47 (CABLE TIES).
5. CABLE WILL BE LACED SO AS NOT TO INHIBIT FREE MOTION OF LOCK-BAR #27.



FIRST USED ON OPTION/MODEL	QTY.	DESCRIPTION	PART NO.	ITEM NO.
TU60				
PARTS LIST				
UNLESS OTHERWISE SPECIFIED DIMENSION IN INCHES TOLERANCES		DRN <i>Cartney</i> DATE <i>10/20/72</i>	<b>digital</b> EQUIPMENT CORPORATION MAYNARD, MASSACHUSETTS	
DECIMALS	ANGLES	CHK'D <i>W. W. B.</i> DATE <i>12/21/72</i>		
XXX - .005	± 0° 30'	ENG. <i>W. W. B.</i> DATE <i>12-17-72</i>	TITLE <b>TRANSPORT ASSY (TU60)</b>	
XX - .02		PROJ. ENG. DATE		
X - .1		DATE		
REMOVE BURRS AND BREAK SHARP CORNERS SURFACE QUALITY ✓		PROD. DATE <i>11/15/73</i>		
MATERIAL	NEXT HIGHER ASSY.			
FINISH	D-UA-TU60-0-0	SIZE CODE	NUMBER	REV.
	SCALE NONE	DAD	7009014-0-0	
	SHEET 1 OF 2	DIST.		

REV.	CHANGE NO.	REVISIONS

BRUNING 40-107 15568

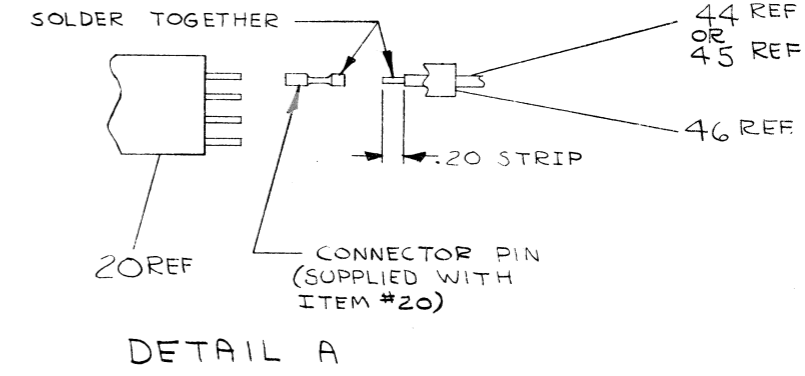
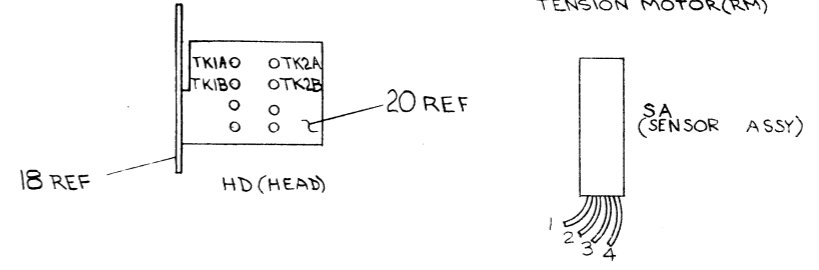
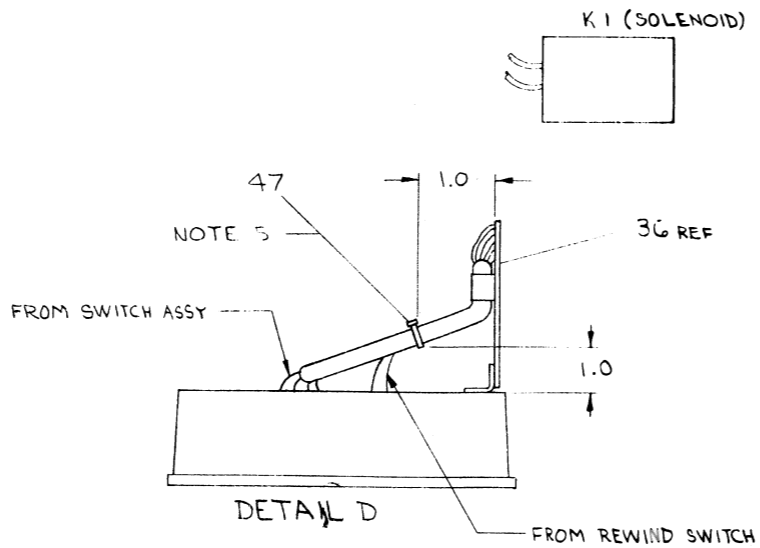
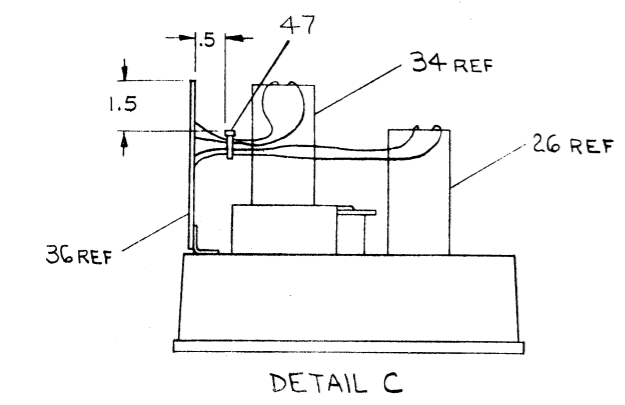
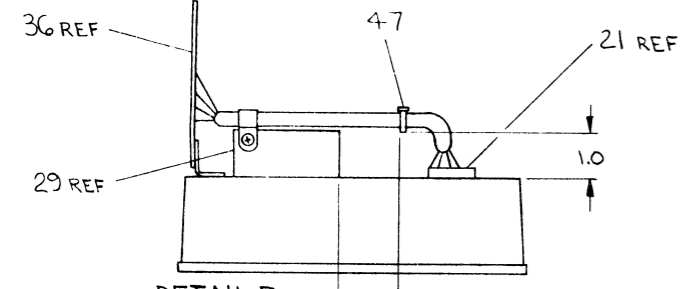
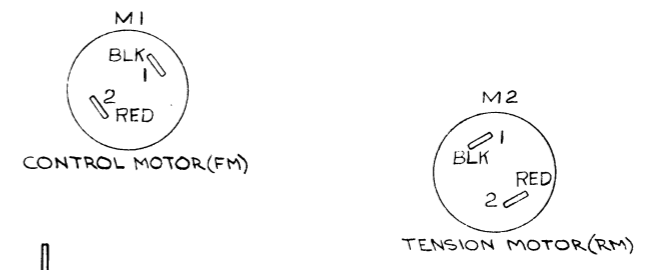
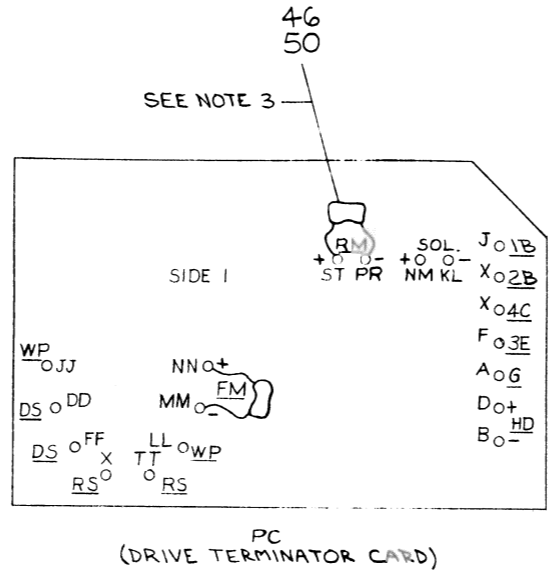
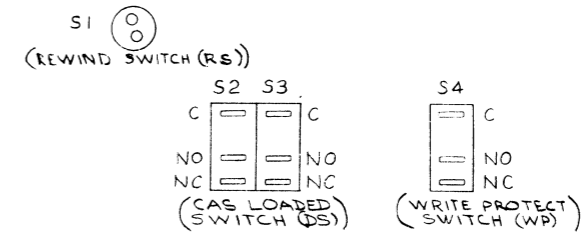
DEC 1971 100-1

REV. NUMBER 7009014-0-0

A

WIRE TABLE

REV NO	DESCRIPTION	FROM	TO	REMARKS	LENGTH
NO	COLOR	AWG	CONN WITH	CONN WITH	
43	ORN	26	S1 SOLDER	PC-X	EITHER S1 TERM. 3.5
43	ORN	26	S1 SOLDER	PC-TT	REMAINING S1 TERM. 3.5
45	WHT	26	HD-TK1A SOLD#46	PC-D	SEE DETAIL A 4.5
45	GRY	26	HD-TK2A SOLD#46	PC-B	SEE DETAIL A 4.5
			S3-C	PC-FF	
			S4-C	PC-LL	
			S4-NO	PC-JJ	
	BLK		M1-1	PC-MM	5.0
	RED		M1-2	PC-NN	5.0
	BLK		M2-1	PC-PR	5.0
	RED		M2-2	PC-ST	5.0
	WHT		K1	PC-MN	EITHER K1 LEAD 1.25
	WHT		K1	PC-KL	REMAINING K1 LEAD 1.25
	BRN		SA -1	PC-J	EITHER BRN LEAD
	BRN		SA -2	PC-X	REMAINING BRN LEAD
	BLK		SA -3	PC-F	
	ORN		SA -4	PC-X	
44	BRN	26	HD-TK1B SOLD#46	HD-TK2B SOLD#46	SEE DETAIL A .75



FIRST USED ON OPTION/MODEL	QTY.	DESCRIPTION	PART NO.	ITEM NO.
TU60				
PARTS LIST				
UNLESS OTHERWISE SPECIFIED DIMENSION IN INCHES TOLERANCES		DRN DATE 7/12/72	digital EQUIPMENT CORPORATION MAYNARD MASSACHUSETTS	
DECIMALS .xxx = .005	ANGLES ±0° 30'	CHK'D DATE 12/21/72	TITLE	
xx = .02		ENG. DATE 12-14-72	TRANSPORT ASSY (TU60)	
x = .1		PRJ ENG DATE 12-27-72	NUMBER	
REMOVE BURRS AND BREAK SHARP CORNERS SURFACE QUALITY	✓	PROD. DATE 1/13/73	D AD 7009014-0-0	
MATERIAL	NEXT HIGHER ASSY.	SCALE	REV.	
FINISH		SHEET 2 OF 2	DIST.	

REV	CHANGE NO
1	

REV. NUMBER D AD 7009014-0-0

# DIGITAL EQUIPMENT CORPORATION

MAYNARD, MASSACHUSETTS

## PARTS LIST

MADE BY W. MAJOR  
 DATE 11/27/72  
 ENG WYBENSON  
 DATE 1-16-73

CHECKED W. MAJOR  
 DATE 1/16/73  
 PROD *W. Ben*  
 DATE 1/15/73

SECTION 1  
 ISSUED SECT. 1

ITEM NO.	DWG NO. / PART NO.	DESCRIPTION	QUANTITY / VARIATION
1	D-IA-7410640-0-0	BASE ASSY	1
2	B-MD-7410518-0-0	BUTTON, REWIND SWITCH	1
3	12111040	SWITCH, PUSHBUTTON SPST	1
4	B-MD-7410519-0-0	BRACKET, REWIND SWITCH	1
5	9006011-1	SCR, PHL HD PAN #4-40 X 3/8	2
6	9008172	WASHER, FLAT #4 S.S.	7
7	9006632	WASHER, INT TOOTH #4	6
8	C-IA-7409930-0-0	EJECTOR ASSY	1
9	9006013-1	SCR, PHL HD PAN #4-40 X 1/2	4
10		LOCTITE 75	A/R
11	D-AD-7009146-0-0	SPINDLE ASSEMBLY	1
12	9009275-2	SCR, PHL HD PAN #4-40 X 3/8	3
13	9009308	SPRING	2
14	9006527	ROLL PIN 3/32 X 11/16 LG	2
15	9006531	ROLL PIN 1/8 X 3/8 LG	2
16	C-IA-7409924-0-0	COVER, LOWER CASSETTE ASSY	1
17	9006001-1	SCR, PHL HD PAN #2-56 X 1/4	3
18	C-MD-7409908-0-0	PLATE, HEAD MOUNT	1
19	9009276	SCR, PHL HD PAN #2-56 X 1/8	1
20	1211174	HEAD	1
21	D-PS-1211289-0-0	SENSOR ASSEMBLY	1
22	C-MD-7409912-0-0	GUIDE, TAPE	1
23			4

TITLE  
 TRANSPORT ASSY (TU6Ø)

ASSY NO.  
 D-AD-7009014-0-0

SIZE CODE  
**A PL**

NUMBER  
 7009014-0-0

REV. ECO NO.

SHEET 1 OF 3

# DIGITAL EQUIPMENT CORPORATION

MAYNARD, MASSACHUSETTS

## PARTS LIST

MADE BY W. MAJOR  
 DATE 11/27/72  
 ENG WYBENSON  
 DATE 1-16-73

CHECKED W. MAJOR  
 DATE 1/16/73  
 PROD *W. Ben*  
 DATE 1/15/73

SECTION 1  
 ISSUED SECT. 1

ITEM NO.	DWG NO. / PART NO.	DESCRIPTION	QUANTITY / VARIATION
23	C-MD-7409911-0-0	SPACER, TAPE GUIDE	2
24	9006015-1	SCR, PHL HD PAN #4-40 X 3/4	2
25	D-PS-1211279-0-0	COUPLING, CASSETTE DRIVE	1
26	1211111	MOTOR, CASSETTE	1
27	D-MD-7409917-0-0	LOCK-BAR, CASSETTE	1
28	9009277-1	SCR, SLOTTED HD PAN #8-32 X 1/4	1
29	C-MD-7409928-0-0	BRACKET, SOLENOID	1
30	9008301-1	SCR, PHL HD PAN #4-40 X 1/4	5
31	9007079	CLAMP, CABLE 5/16	3
32	1211189	SOLENOID	1
33	B-MD-7409929-0-0	BRACKET, TERMINAL BOARD	1
34	C-AD-7009140-0-0	MOTOR MOUNT ASSY	1
35	9009279	SPRING	1
36	D-IA-7009041-0-0	TERMINATOR CABLE ASSY	1
37	C-MD-7410537-0-0	SPRING, LOCK BAR	1
38	C-AD-7009141-0-0	SWITCH ASSY	1
39	B-MD-7410544-0-0	SPACER, E.O.T. BLOCK	1
40	C-AD-7009148-0-0	LEVER ASSY	1
41	9006791	SPACER, AL HEX #4 1/8 LG	2
42	9009274	SCREW, SET #2-56 X 1/8 LG	1
43	9107636-33	WIRE, #26 AWG IPVC STRD ORN	A/R
44	9107636-11	WIRE, #26 AWG IPVC STRD BRN	A/R

TITLE  
 TRANSPORT ASSY (TU6Ø)

ASSY NO.  
 D-AD-7009014-0-0

SIZE CODE  
**A PL**

NUMBER  
 7009014-0-0

REV. ECO NO.

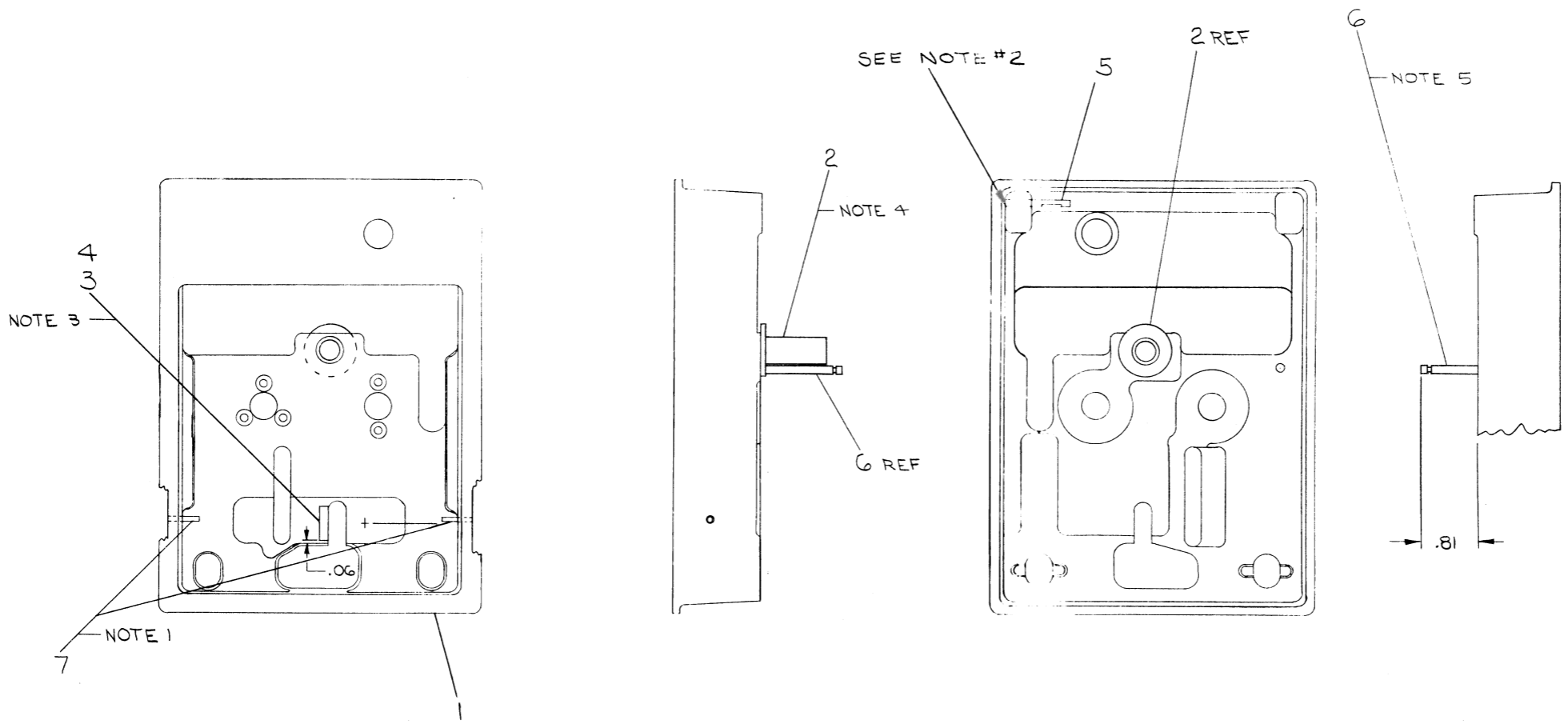
SHEET 2 OF 3



This drawing and specifications herein are the property of Digital Equipment Corporation and shall not be reproduced or copied or used in whole or in part as the basis for the manufacture or sale of items without written permission.

REV 2  
 SIZE CODE D  
 NUMBER 7410640-0-0

- NOTES:
1. ROLL PIN (ITEM#7) TO BE PRESSED FLUSH WITH OUTSIDE SURFACE OF BASE AS SHOWN, 2 PLACES.
  2. PIN (ITEM#5) TO BE PRESSED FLUSH WITH THIS SURFACE AS SHOWN. NOTE POSITION OF CUTOUT ON ITEM#5.
  3. WHEN MOUNTING SHIM (ITEM#3) TO BASE (ITEM#1), USE LOCTITE #404 (ITEM#4) SPARINGLY TO AVOID BUILDUP BUT ENOUGH TO OBTAIN A GOOD BOND. NOTE LOCATION OF SLOT IN BASE.
  4. BUSHING (#2) TO BE PRESSED INTO ITEM#1 AS SHOWN.
  5. PIN (#6) TO BE PRESSED INTO ITEM#1 TO DIMENSION SHOWN.



QTY.	DESCRIPTION	PART NO.	ITEM NO.
2	ROLL PIN	9006531	7
1	PIN, SPRING, MOTOR BIAS	C-MD-7409934-0-0	6
1	PIN, ANCHOR	C-MD-7410539-0-0	5
A/R	LOCTITE #404		4
1	SHIM, SKEW	B-MD-7410553-0-0	3
1	BUSHING, ROCKER	B-MD-7409938-0-0	2
1	BASE, CASSETTE TRANS. (MACH)	E-MD-7409835-0-0	1

FIRST USED ON OPTION/MODEL		PARTS LIST	
TU60		digital EQUIPMENT CORPORATION MAYNARD, MASSACHUSETTS	
UNLESS OTHERWISE SPECIFIED DIMENSION IN INCHES TOLERANCES	DRN <i>X. S. 2</i> DATE 9-15-72	TITLE BASE ASSY	
DECIMALS .005	CHK'D <i>W. M. P.</i> DATE 11/1/72	MATERIAL / /	
ANGLES ±0° 30'	ENG <i>W. M. P.</i> DATE 11/1/72	NEXT HIGHER ASSY. D-AD-7005014-0-0	
xxx = .005	PROJ. ENG. DATE 11/6/72	SCALE 1/1	
xx = .02	PROD. DATE 11/1/72	SHEET OF 1	
x = .1	REMOVE BURRS AND BREAK SHARP CORNERS SURFACE QUALITY ✓	SIZE CODE NUMBER REV. DIA 7410640-0-0	
FINISH / /		DIST. 1	

REV	CHANGE NO	REVISIONS

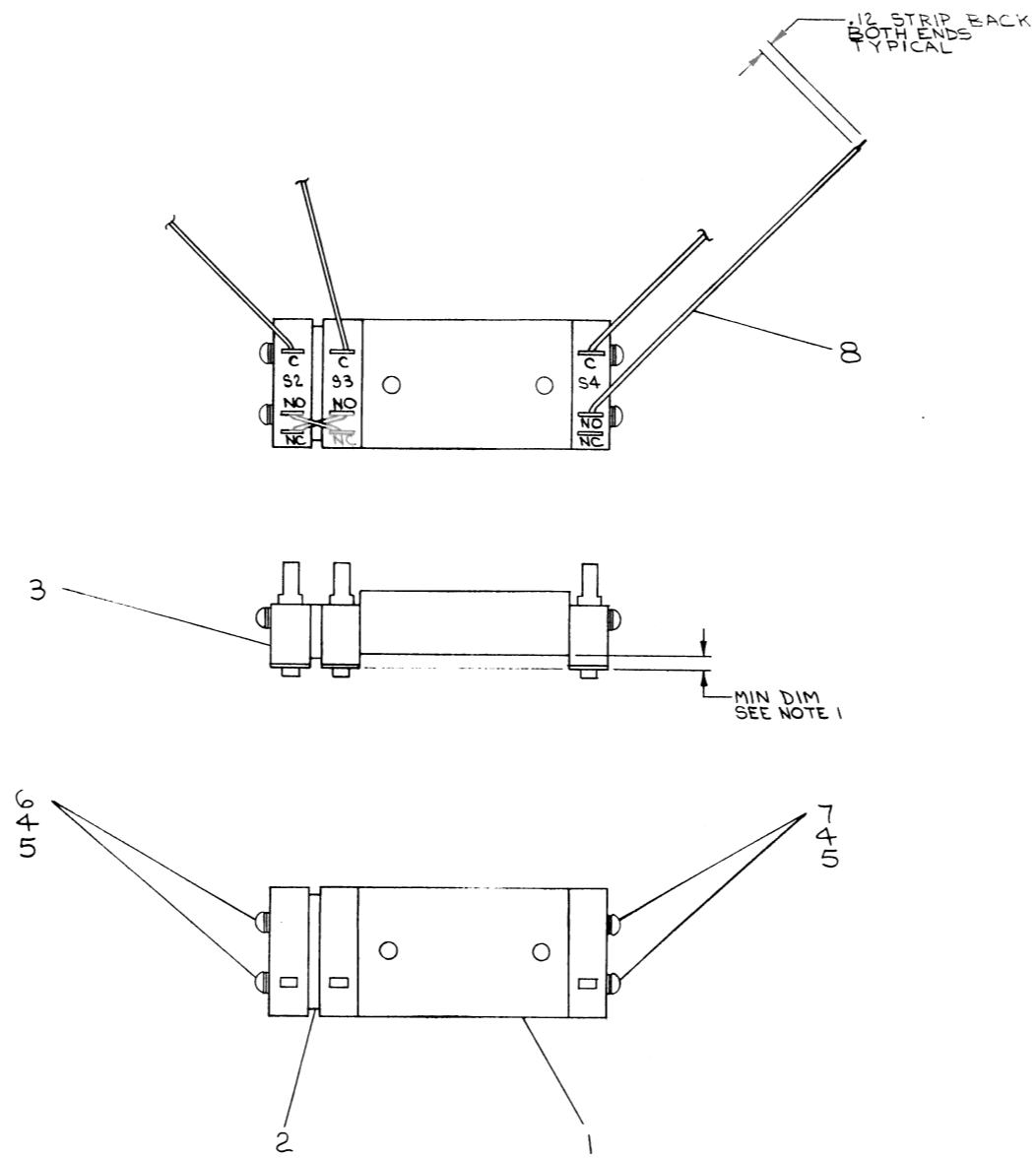
SIZE CODE D  
 NUMBER 7410640-0-0

This drawing and specifications herein are the property of Digital Equipment Corporation and shall not be reproduced or copied or used in whole or in part as the basis for the manufacture or sale of items without written permission.

COPYRIGHT © 1972,  
DIGITAL EQUIPMENT CORPORATION

WIRE TABLE

ITEM NO.	DESCRIPTION	FROM		TO		LENGTH
		CONN	WITH	CONN	WITH	
8	BRN 26	S2-C	SOLDER	---	---	5"
8	BRN 26	S2-NO	SOLDER	S3-NC	SOLDER	.75"
8	BRN 26	S2-NC	SOLDER	S3-NO	SOLDER	.75"
8	BRN 26	S3-C	SOLDER	---	---	5"
8	BRN 26	S4-C	SOLDER	---	---	6"
8	BRN 26	S4-NO	SOLDER	---	---	4.5"



NOTES:  
1. SWITCHES MUST BE ADJUSTED AT ASSY TO OBTAIN MINIMUM DIMENSION FROM BOTTOM SURFACE OF SWITCHES TO BOTTOM SURFACE OF SWITCH BLOCK.

QTY.	DESCRIPTION	PART NO.	ITEM NO.
8	WIRE #26AWG, IPVC, STRD	9107636-11	8
2	SCR, PHL HD PAN 2-56X1/2 SST	9006005-1	7
2	SCR, PHL HD PAN 2-56X3/4 SST	9006006-1	6
4	WASHER, .250X.094X.020 THK	9008877	5
4	WASHER, INT TOOTH #2 SST	9006631	4
3	SWITCH, MICRO	1209782	3
1	SPACER, MICRO SWITCH	CMD-7409935-00	2
1	BLOCK, SWITCH	CMD-7409926-0-0	1

FIRST USED ON OPTION/MODEL TU60		PARTS LIST	
UNLESS OTHERWISE SPECIFIED DIMENSION IN INCHES. TOLERANCES	DRN 11/2/72	DATE 11/2/72	<p>digital EQUIPMENT CORPORATION MAYNARD MASSACHUSETTS</p>
DECIMALS .xxx = .005 .xx = .02 .x = .1	CHK'D 12/2/72	DATE 12/2/72	
ANGLES ±0° 30'	ENG. 12/2/72	DATE 12/2/72	
REMOVE BURRS AND BREAK SHARP CORNERS SURFACE QUALITY ✓	PROJ. ENG. 12/2/72	DATE 12/2/72	
MATERIAL SS	PROD. 11/2/72	DATE 11/2/72	
FINISH SS	NEXT HIGHER ASSY.		TITLE SWITCH ASSY
	D-AD-7009014-0-0	SIZE CODE D	NUMBER AD7009141-0-0
	SCALE 2/1	SHEET 1 OF 1	DIST.

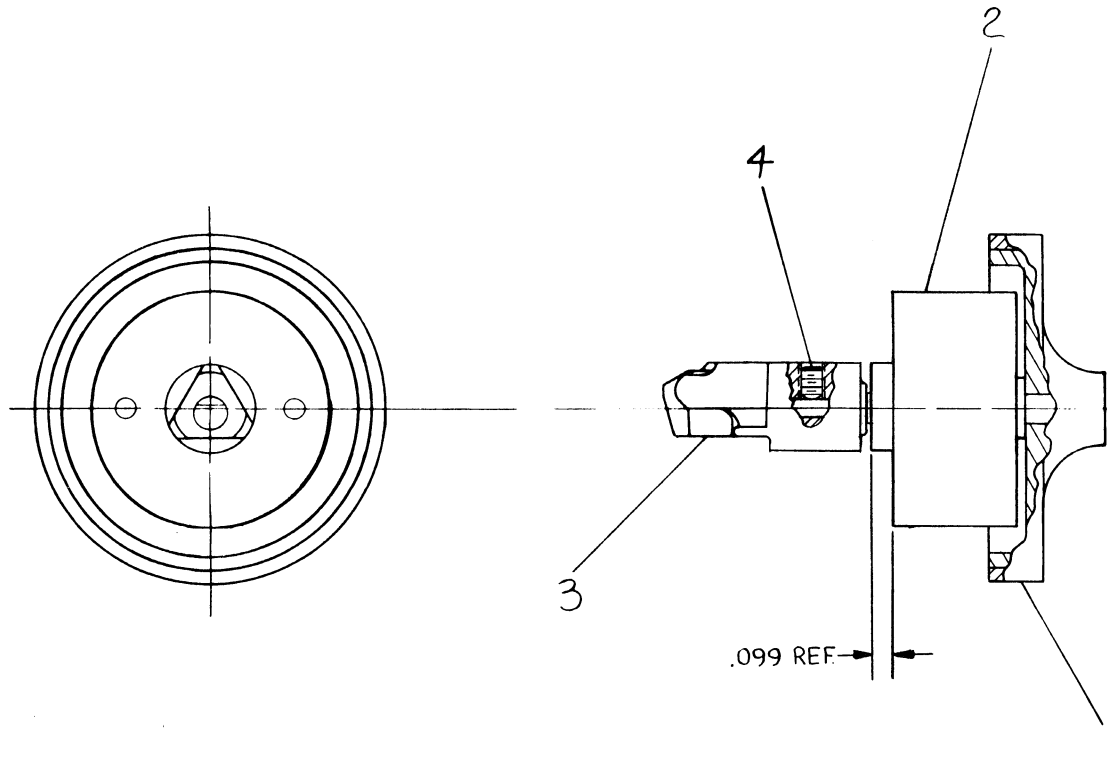
BRUNING 40-107 15968  
REVISIONS  
CHK CHANGE NO. REV

REV  
NUMBER  
D-AD7009141-0-0

This drawing and specifications, herein, are the property of Digital Equipment Corporation and shall not be reproduced or copied or used in whole or in part as the basis for the manufacture or sale of items without written permission.  
1972

NOTES:

1. ITEM #3 TO BUTT AGAINST SHOULDER OF SPINDLE.



QTY.	DESCRIPTION	PART NO.	ITEM NO.
1	SCREW, SET, #2-56	9009274	4
1	COUPLING, CASSETTE DRIVE	D-PS-1211279-0-0	3
1	BEARING	C-MD-7410692-0-0	2
1	PULLEY, DRIVE ASSY	C-IA-7409914-0-0	1

FIRST USED ON OPTION/MODEL	QTY.	DESCRIPTION	PART NO.	ITEM NO.
TU60				
PARTS LIST				
UNLESS OTHERWISE SPECIFIED DIMENSION IN INCHES. TOLERANCES	DRN <i>W. Carberry</i>	DATE 9/11/72	<b>digital</b> EQUIPMENT CORPORATION MAYNARD, MASSACHUSETTS  TITLE SPINDLE ASSY	
DECIMALS	CHK'D <i>W. Major</i>	DATE 10/25/72		
ANGLES	ENG. <i>W. Benson</i>	DATE 10/25/72		
.XXX - .005	PROJ. ENG.	DATE 10/25/72		
.XX = .02	PRG.	DATE 10/25/72		
X = .1				
REMOVE BURRS AND BREAK SHARP CORNERS SURFACE QUALITY	NEXT HIGHER ASSY.			
MATERIAL	D-AD-7009014-0-0		SIZE CODE C AD	NUMBER 7009146-0-0
FINISH	SCALE 2/1		REV. A	
	SHEET 1 OF 1		DIST. C	

REVISIONS	CHANGE NO.	REV.
	TU60-00004	A
<i>W. Benson</i>		12/12/72
<i>W. Benson</i>		12-15-72

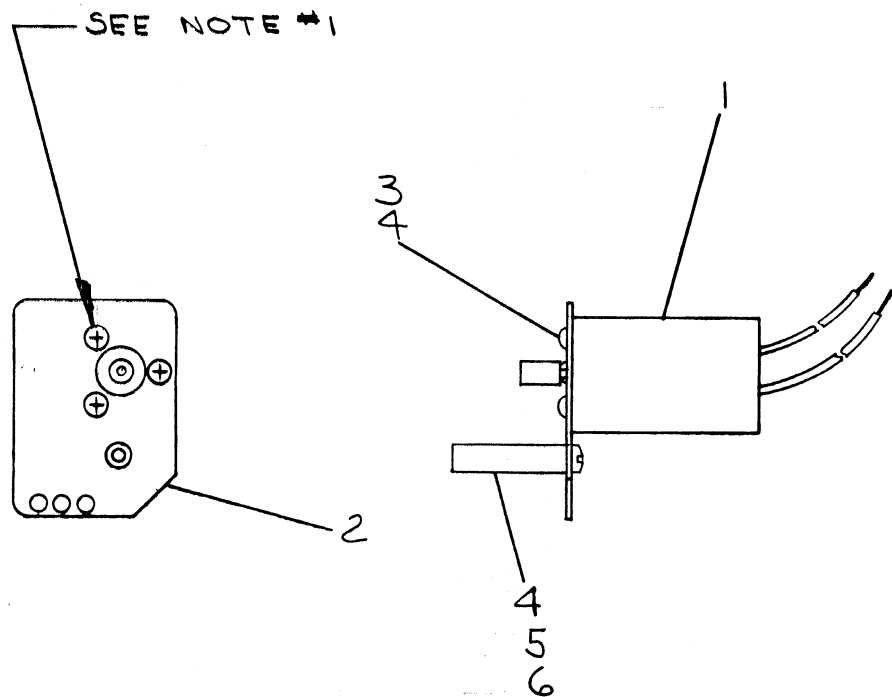
BRUNING 40-107 15968

REV. A  
NUMBER C AD 7009146-0-0  
SIZE CODE C

This drawing and specifications, herein, are the property of Digital Equipment Corporation and shall not be reproduced or copied or used in whole or in part as the basis for the manufacture or sale of items without written permission.

NOTES:

1: LOCTITE(#4) TO BE APPLIED TO THREADS OF ITEMS #3 & #5.



1	PIVOT, MOTOR	GMD-7409915-0-0	6
1	SCR, SLOT HD PAN	9009277	5
A/R	LOCTITE (75)		4
3	SCR, PHL PAN HD 4-40-1/4	9008301-1	3
1	MOUNT, MOTOR	GMD-7409910-0-0	2
1	DRIVE MOTOR ASSY	G-IA-7009139-0-0	1

FIRST USED ON OPTION/MODEL	QTY.	DESCRIPTION	PART NO.	ITEM NO.
TU60				
PARTS LIST				
UNLESS OTHERWISE SPECIFIED DIMENSION IN INCHES. TOLERANCES		DRN. <i>K Davis</i>	DATE 9-12-72	<b>digital</b> EQUIPMENT CORPORATION <small>MAYNARD, MASSACHUSETTS</small>  TITLE MOTOR MOUNT ASSY
DECIMALS	ANGLES	CHK'D <i>W Major</i>	DATE 11/1/72	
.XXX = .006	±0° 30'	ENG. <i>WY BENSON</i>	DATE 11/1/72	
.XX = .02		PROJ. ENG. <i>WY BENSON</i>	DATE 11/6/72	
.X = .1		REMOVE BURRS AND BREAK SHARP CORNERS SURFACE QUALITY	DATE 11/1/72	
MATERIAL	NEXT HIGHER ASSY.			
FINISH		D-AD-7009014-0-0	SIZE CODE C AD	NUMBER 7009140-0-0
		SCALE 1/1	SHEET	OF 1
		DIST. S		

REVISIONS	REV.
CHANGE NO.	
CHK	

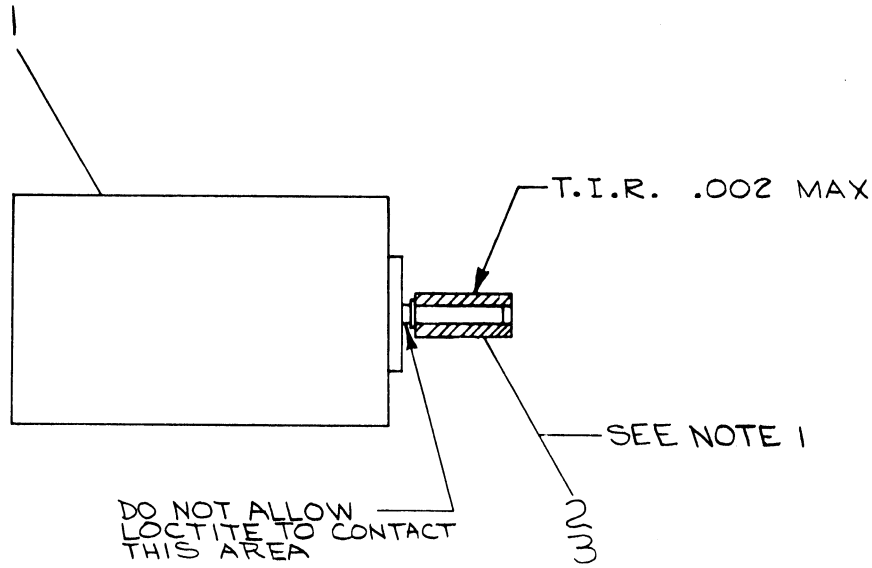
BRUNING 40-107 15968

REV. NUMBER 7009140-0-0  
SIZE CODE C AD

This drawing and specifications, herein, are the property of Digital Equipment Corporation and shall not be reproduced or copied or used in whole or in part as the basis for the manufacture or sale of items without written permission.

**NOTES:**

1. SLEEVE (#2) TO BE PRESSED ON MOTOR SHAFT TO "E" RING. LOCTITE TO BE APPLIED SPARINGLY TO INSIDE OF SLEEVE BEFORE ASSEMBLY.



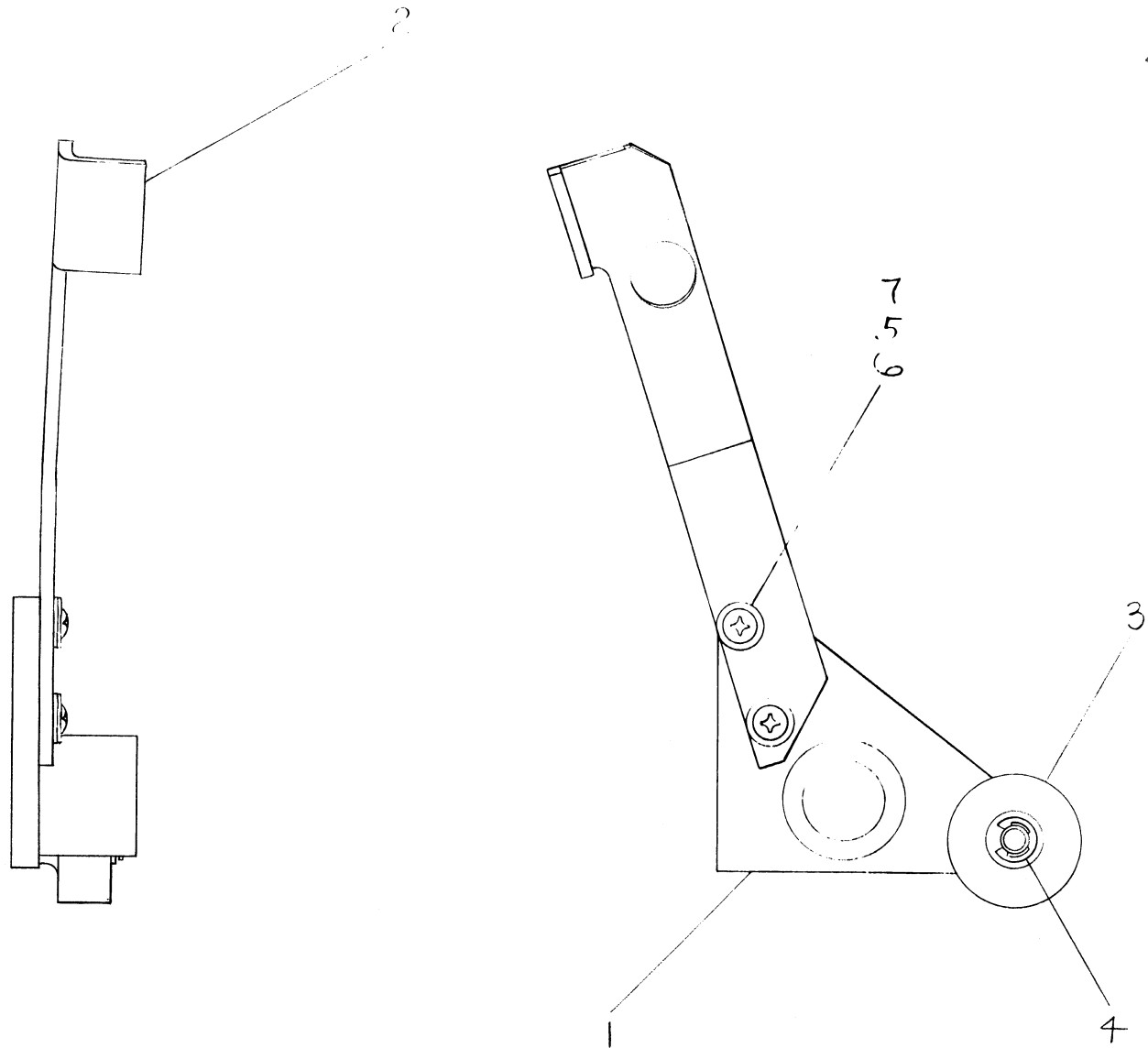
A/R	LOCTITE (75)		3
1	SLEEVE, MOTOR	C-MD-7409913-0-0	2
1	MOTOR	1211111	1

FIRST USED ON OPTION/MODEL	QTY.	DESCRIPTION	PART NO.	ITEM NO.
TU60				
PARTS LIST				
UNLESS OTHERWISE SPECIFIED DIMENSION IN INCHES. TOLERANCES		DRN. <i>Z. Carberry</i>	DATE 10-5-72	<b>digital</b> EQUIPMENT CORPORATION MAYNARD, MASSACHUSETTS  TITLE <b>DRIVE-MOTOR ASSY</b>
DECIMALS	ANGLES	CHK'D. <i>W. Major</i>	DATE 10/25/72	
.XXX = .005	± 0° 30'	ENG. <i>W. J. Benner</i>	DATE 10/28/72	
.XX = .02		PROJ. ENG. <i>W. J. Benner</i>	DATE 10/14/72	
.X = .1		DATE 10/27/72		
REMOVE BURRS AND BREAK SHARP CORNERS SURFACE QUALITY		NEXT HIGHER ASSY.		
MATERIAL		C-AD-7009140-0-0		SIZE CODE
FINISH		SCALE 2/1		NUMBER
		SHEET 1 OF 1		7009139-0-0
			DIST. G	REV.

REV. NUMBER C IA 7009139-0-0

BRUNING 40-107 15968	REVISIONS	REV.
CHK	CHANGE NO.	

This drawing and specifications, herein, are the property of Digital Equipment Corporation and shall not be reproduced or copied or used in whole or in part as the basis for the manufacture or sale of items without written permission.



QTY.	DESCRIPTION	PART NO.	ITEM NO.
2	WASHER, FLAT #4	9008172	7
2	WASHER, INT TOOTH TYPE, #4	9006632	6
2	SCR, #4-40 X 1/4, PHIL PAN HD	9008301-1	5
1	RING, RETAINING	9009273	4
1	ROLLER, IDLER	B-MD-7409932-0-0	3
1	LEVER, ROCKER	C-MD-7409931-0-0	2
1	ROCKER ASSY	C-IA-7409919-0-0	1

FIRST USED ON OPTION/MODEL	QTY.	DESCRIPTION	PART NO.	ITEM NO.
TU60				
PARTS LIST				
UNLESS OTHERWISE SPECIFIED DIMENSION IN INCHES. TOLERANCES		DRM: <i>Z. Carberry</i>	DATE: 9/12/72	<b>digital</b> EQUIPMENT CORPORATION <small>MAYNARD, MASSACHUSETTS</small>  TITLE <h2 style="margin: 0;">LEVER ASSY</h2>
DECIMALS	ANGLES	CHK'D: <i>W. Major</i>	DATE: 11/1/72	
.XXX = .005	±0° 30'	ENG: <i>W. Major</i>	DATE: 11/1/72	
.XX = .02		PROJ. ENG: <i>W. Major</i>	DATE: 11/6/72	
.X = .1		PROD: <i>W. Major</i>	DATE: 11/1/72	
REMOVE BURRS AND BREAK SHARP CORNERS SURFACE QUALITY				
MATERIAL	SS	NEXT HIGHER ASSY.		
FINISH	SS	DAD-7005014-0-0	SIZE CODE: C AD	NUMBER: 7009148-0-0
		SCALE: 2/1		REV.:
		SHEET: 1 OF 1	DIST.:	

BRUNING 40-107 15968

REV.	CHANGE NO.

REV. NUMBER C AD 7009148-0-0

D

C

B

A

D

C

B

A

4

3

2

1