

TITLE	SHEET	OF	SIZE	CODE	NUMBER	REV
TU6θ DECLASSIFIER	2	4	B	DD	TU6θ-θ	D

CUSTOMER PRINT SET		ELECTRICAL					CUSTOMER PRINT SET		MECHANICAL						
TU60-0	MFG. SET	FIND NO.	DRAWING NO.	REV	NO OF SHT	DESCRIPTION	OPTION NO./FILE DATE	TU60-0	MFG. SET	FIND NO.	DRAWING NO.	REV	NO OF SHT	DESCRIPTION	OPTION NO./FILE DATE
X		1	D-WD-TU60-0-WD	*	1	CASSETTE DRIVE WIRING DIAGRAM		X		1	D-IA-TU60-0-0	D	2	TU60 UNIT ASSEMBLY	
								X			A-PL-TU60-0-0	D	2	TU60 UNIT ASSEMBLY	
											E-IA-7409943-0-0		2	CHASSIS (TU60)	
											D-IA-7409990-0-0		1	PLATE, CHASSIS, FRONT (TU60)	
											E-MD-7409941-0-0		1	COVER, CHASSIS	
		13	D-IA-7009041-0-0		1	TERMINATOR CABLE ASSY					C-MD-7409904-0-0		1	BRACKET, SYMMETRICAL	
X			D-CS-5410135-0-1	+	2	TERMINATOR, CASSETTE DRIVE					B-MD-7409933-0-0		1	BUSHING, PIVOT	
											D-UA-BC05L-0-0		1	CABLE, JUMPER	
											D-PS-1210931-0-0		1	BLOCK, CABLE RETAINING	
											C-MD-7410690-0-0		1	BRACKET, SHIPPING	
X		17	D-CS-M7760-0-1	+	4	TU60 LOGIC					D-PS-1209154-0-0		1	CHASSIS-TRAK	
								X		2	D-AD-7009014-0-0	+	2	TRANSPORT ASSY (TU60)	
X		18	D-CS-M7761-0-1	+	5	READ/WRITE AND SERVO		X			A-PL-7009014-0-0	+	3	TRANSPORT ASSY (TU60)	
											C-MD-7409911-0-0		1	SPACER, TAPE GUIDE	
											C-MD-7409912-0-0		1	GUIDE, TAPE	
											C-MD-7409928-0-0		1	BRACKET, SOLENOID	
											C-MD-7409908-0-0		1	PLATE, HEAD MOUNT	
C		19	B-DD-H751-0	+	3	H751 POWER SUPPLY					B-MD-7410518-0-0		1	BUTTON, REWIND SWITCH	
			D-UA-H751-0-0		2	H751 POWER SUPPLY					B-MD-7410519-0-0		1	BRACKET, REWIND SWITCH	
			E-IA-5310191-0-0		1	CHASSIS, POWER SUPPLY					C-MD-7410537-0-0		1	SPRING, LOCK BAR	
											B-MD-7410544-0-0		1	SPACER, E.O.T. BLOCK	
											D-PS-1211279-0-0		1	COUPLING, CASSETTE DRIVE (3MM)	
											D-MD-7409917-0-0		1	LOCK-BAR, CASSETTE	
											D-PS-1211289-0-0		1	SENSOR ASSY	
		20	B-DD-BC05H-0		3	LINE SET					B-MD-7409929-0-0		1	BRACKET, TERMINAL BOARD	
			C-UA-BC05H-0-0		1	LINE SET BC05H (115V)									
			C-UA-BC05J-0-0		1	LINE SET BC05J (230V)									
								X		3	D-IA-7410640-0-0	+	1	BASE ASSEMBLY	
											E-MD-7409835-0-0		1	BASE, CASSETTE TRANSPORT (MACH)	
											B-MD-7409938-0-0		1	BUSHING, ROCKER	
											B-MD-7410553-0-0		1	SHIM, SKEW	
											C-MD-7410539-0-0		1	PIN, ANCHOR	
											C-MD-7409934-0-0		1	PIN, SPRING, MOTOR BIAS	
											E-PS-1211122-0-0		1	BASE, CASSETTE TRANSPORT (CAST)	

CUSTOMER PRINT SET CODES
X = PRINT OF DOCUMENT INCLUDED IN PRINT SET
C = INCLUDES ALL PRINTS INDICATED ON DOCUMENT
S = CONFIDENTIAL AUTHORIZED SIGNATURE REQUIRED

TITLE
TU60 DFCASSETTE

SIZE CODE
B DD

NUMBER
TU60-0

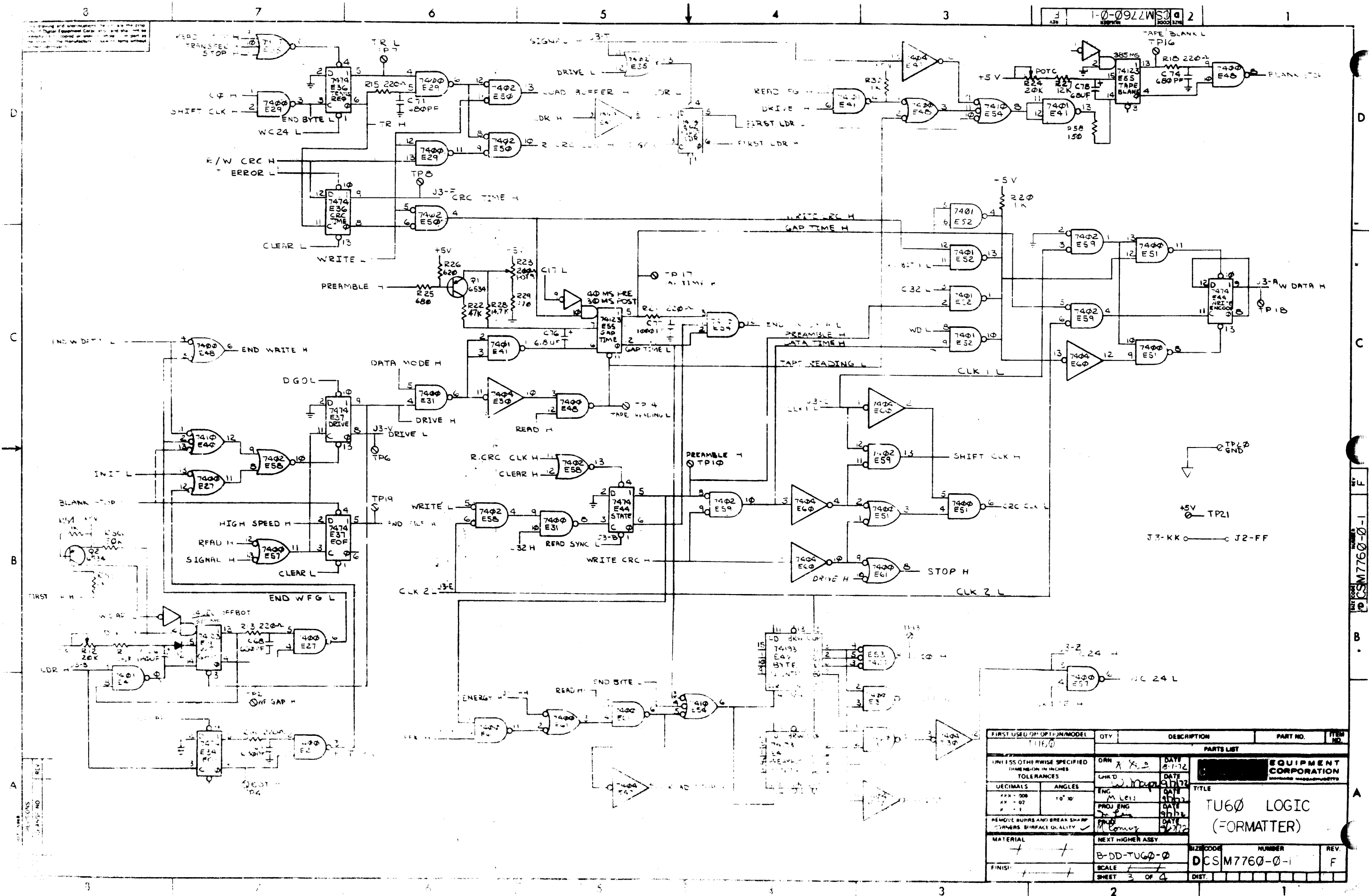
REV
D

SHEET 3 OF 4

CUSTOMER PRINT SET		MECHANICAL					CUSTOMER PRINT SET		MECHANICAL				
TU60-0	MFG. SET	FIND NO.	REV	NO OF SHT	DESCRIPTION	OPTION NO / FILE DATE	TU60-0	MFG. SET	FIND NO.	REV	NO OF SHT	DESCRIPTION	OPTION NO / FILE DATE
		4		1	COVER, LOWER CASSETTE ASSY		X		10	#	1	DRIVE-MOTOR ASSY	
				1	COVER, LOWER CASSETTE						1	SLEEVE, MOTOR	
				1	PIN, SPRING, COVER, CASSETTE								
				1	LENS								
		5		1	EJECTOR ASSY		X		11	#	1	LEVER ASSY	
				1	EJECTOR						1	LEVER, ROCKER	
				1	ROLLER, EJECTOR						1	ROLLER, IDLER	
X		6		# 1	SWITCH ASSY				12		1	ROCKER ASSY	
				1	BLOCK, SWITCH						1	PLATE, ROCKER	
				1	SPACER, MICRO SWITCH						1	SLEEVE, ROCKER	
											1	SHAFT, IDLER	
X		7		# 1	SPINDLE ASSY				14		1	CARD FRAME ASSY	
				1	COUPLING, CASSETTE DRIVE (2MM)						1	FRAME, CARD	
				1	BEARING, SPINDLE						1	STAND-OFF, THREADED	
		8		1	PULLEY, DRIVE ASSY				15		1	BEZEL ASSY	
				1	PULLEY, DRIVE						1	ADAPTER, BEZEL	
				1	SPINDLE						1	INLAY, BEZEL	
											1	BEZEL 5 1/4"	
X		9		# 1	MOTOR MOUNT ASSY				16		1	LOGO (TU60)	
				1	PIVOT, MOTOR						1	SILK SCREEN	
				1	MOUNT, MOTOR								
									19		3	POWER SUPPLY	
											2	POWER SUPPLY	
											1	CHASSIS, POWER SUPPLY	

X = PRINT OF DOCUMENT INCLUDED IN PRINT SET
 C = INCLUDES ALL PRINTS INDICATED ON DOCUMENT
 S = CONFIDENTIAL AUTHORIZED SIGNATURE REQUIRED

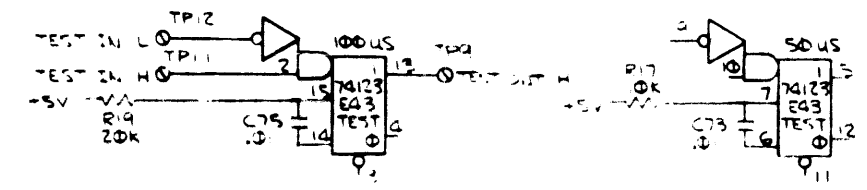
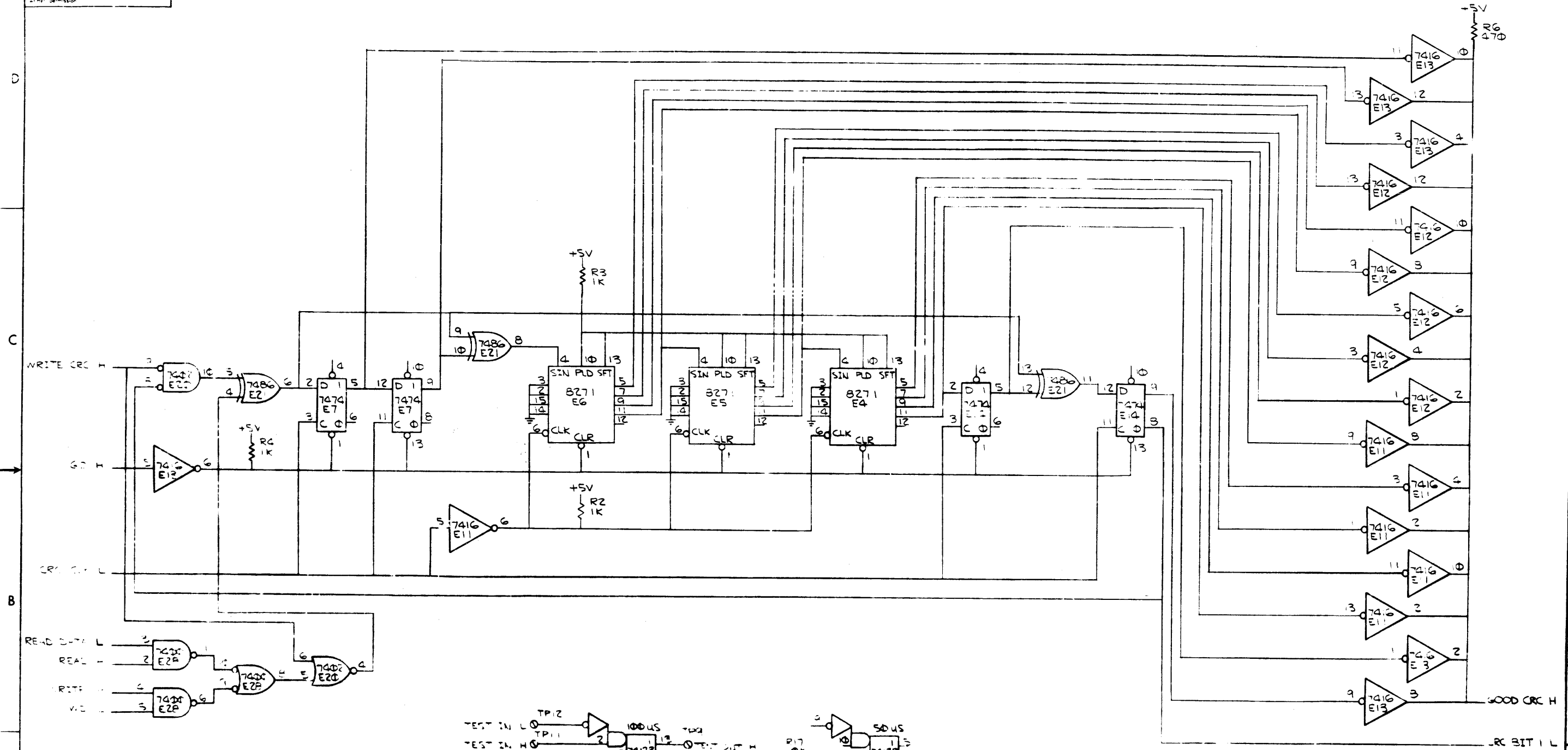
TITLE: TU60 DECASSETTE
 SHEET 4 OF 4
 CODE: B DD
 NUMBER: TU60-0
 REV: 0



FIRST USED OR OPTION/MODEL	QTY	DESCRIPTION	PART NO.	ITEM NO.
TU60				
PARTS LIST				
UNLESS OTHERWISE SPECIFIED (DIMENSIONS IN INCHES)	DRN	DATE	EQUIPMENT CORPORATION <small>10000 WASHINGTON BLVD. WASHINGTON, D.C. 20037</small>	
TOLERANCES	CHK'D	DATE		
DECIMALS	ENG	DATE		
ANGLES	PROJ. ENG.	DATE		
REMOVE BURRS AND BREAK SHARP CORNERS SURFACE QUALITY	PROD.	DATE	TU60 LOGIC (FORMATTER)	
MATERIAL	NEXT HIGHER ASSY.			
FINISH	SCALE			
	SHEET			
	B-DD-TU60-0	SIZE CODE	NUMBER	REV.
	3 OF 4	DCS M7760-0-1		F

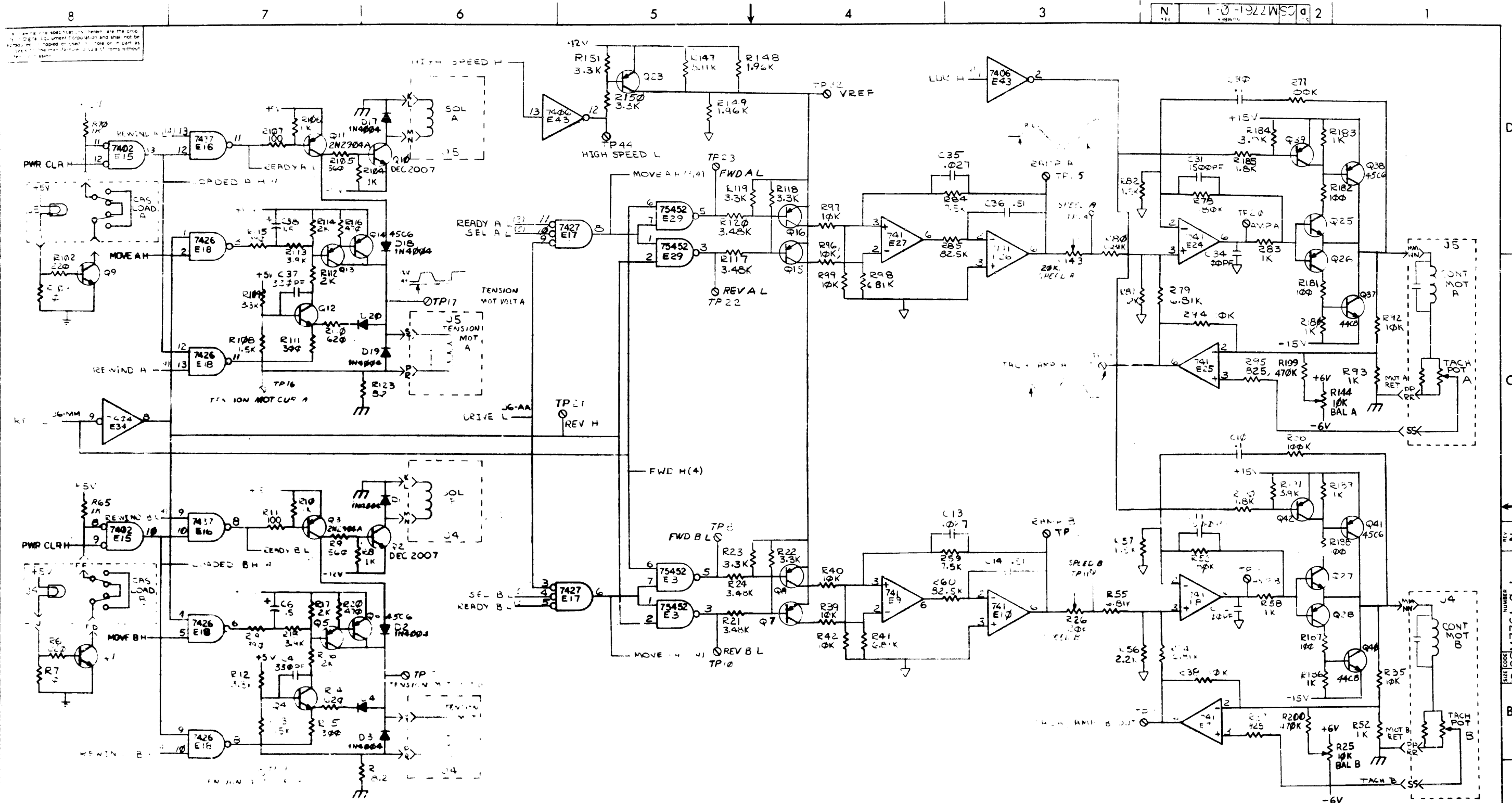
REV. F
 DCS M7760-0-1
 REV. B

1. Values and specifications herein are the property of the manufacturer and shall not be used in whole or in part as a basis for the manufacture of items without written permission.



REV.	CHANGE NO.

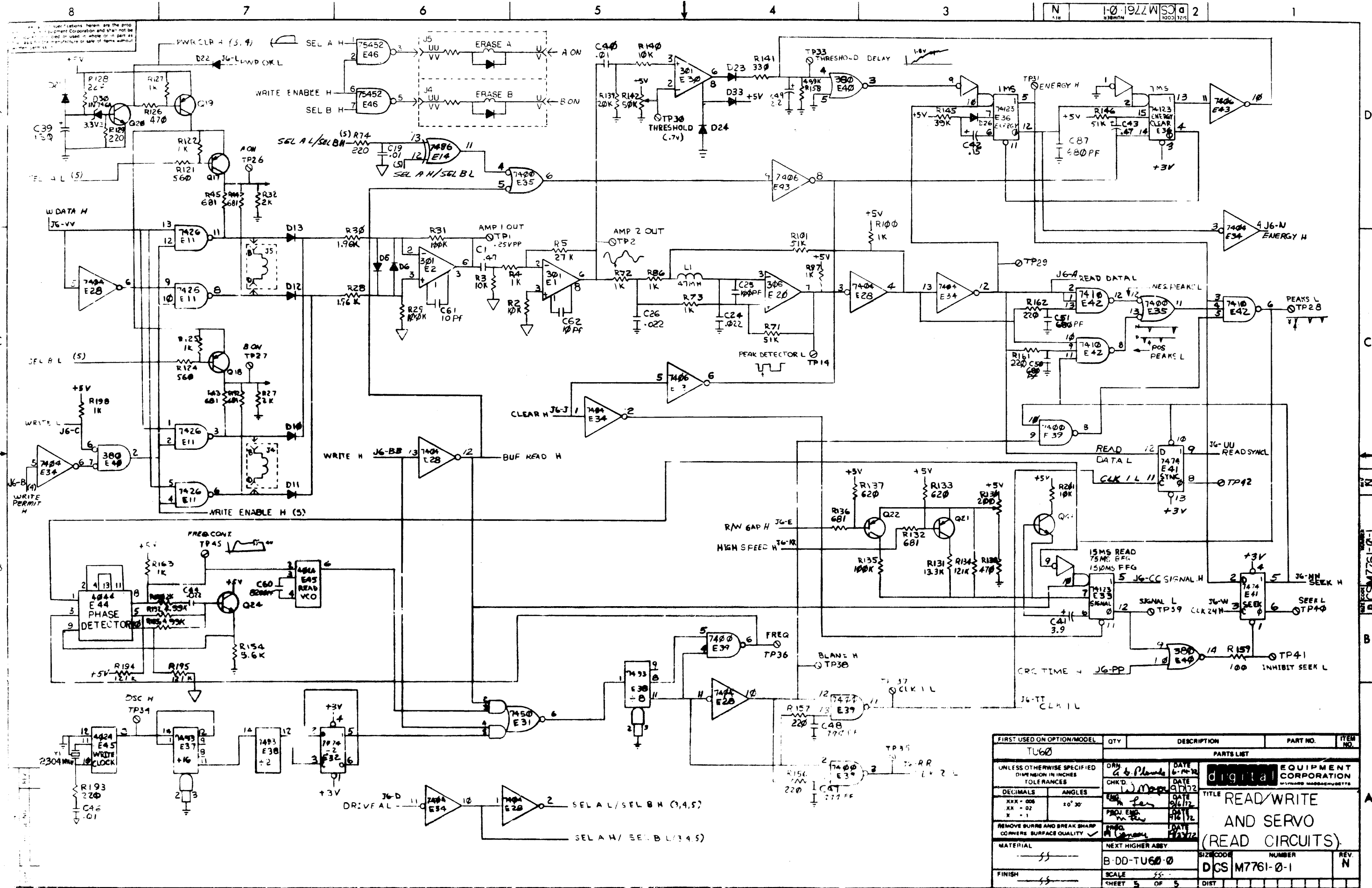
FIRST USED ON OPTION/MODEL TU	QTY	DESCRIPTION	PART NO.	ITEM NO.
PARTS LIST				
UNLESS OTHERWISE SPECIFIED DIMENSIONS IN INCHES TOLERANCES	DRAWN DATE	CHECKED DATE	EQUIPMENT CORPORATION WATERTOWN MASSACHUSETTS	
DECIMALS ANGLES	PROJ. ENG. DATE	DATE		
MATERIAL	NEXT HIGHER ASBY.		TITLE TU60 LOGIC (CRC LOGIC)	
FINISH	SCALE			
B-ED-TU60-0		SIZE CODE DCS	NUMBER M7760-0-1	REV. F
SHEET 4 OF 4		DIST.		



FIRST USED (OR OPTION/MODEL)	QTY	DESCRIPTION	PART NO.	ITEM NO.
PARTS LIST				
UNLESS OTHERWISE SPECIFIED DIMENSION IN INCHES TOLERANCES	DRN	DATE	digital EQUIPMENT CORPORATION MAYFIELD MASSACHUSETTS	
DECIMALS	CHK'D	DATE		
ANGLES	ENG	DATE	TITLE READ / WRITE AND SERVO (MOTOR CIRCUITS)	
XXX - 000 XX - 00 X - 0	PROJ ENG	DATE		
REMOVE BURRS AND BREAK SHARP CORNERS SURFACE QUALITY	PROJ	DATE	MATERIAL NEXT HIGHER ASSY.	
			FINISH SCALE	
			SHEET 3 OF 5	
			SIZE CODE D CSM 7761-0-1	
			NUMBER REV N	
			DIST	

REV
PART NO

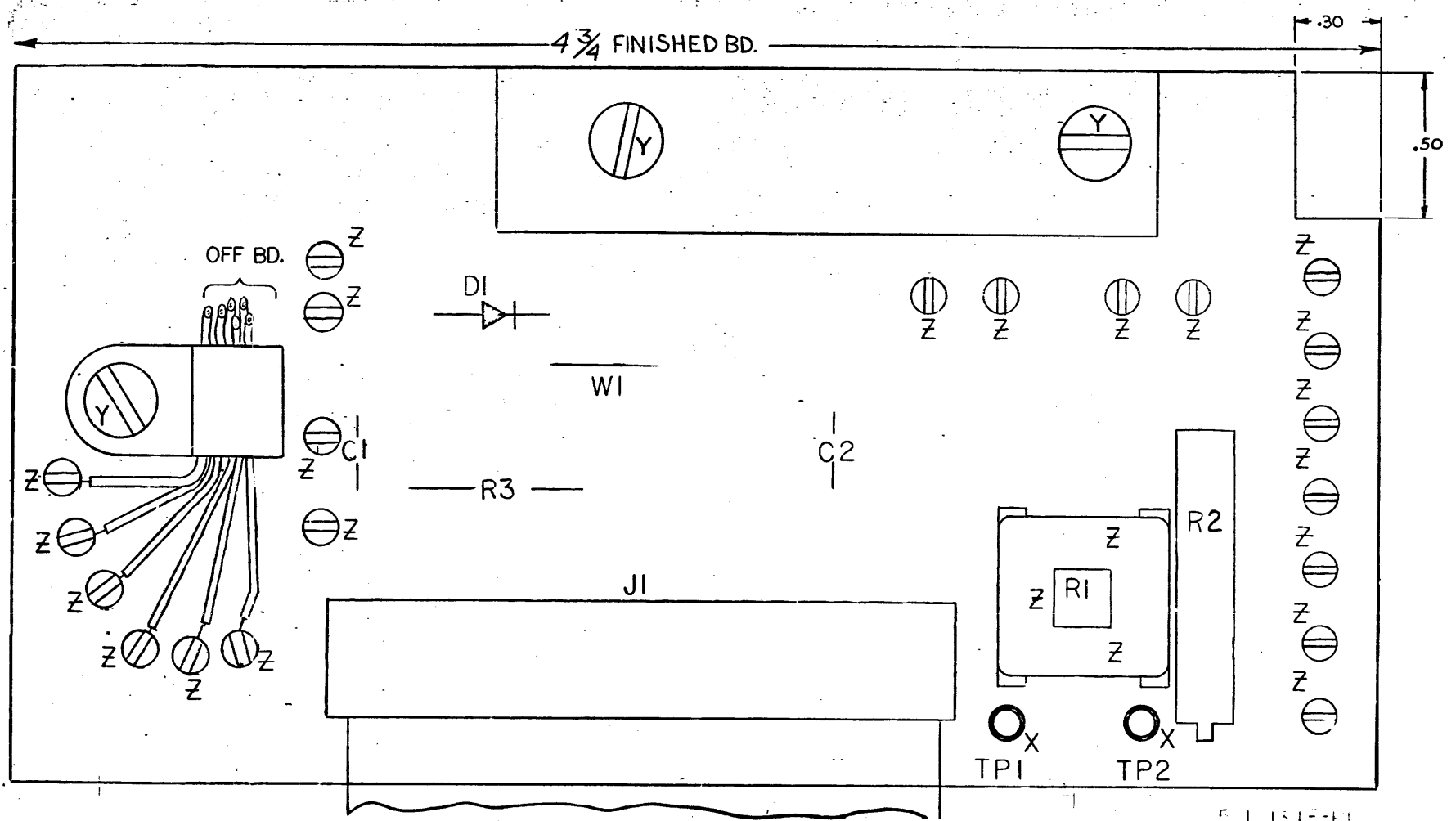
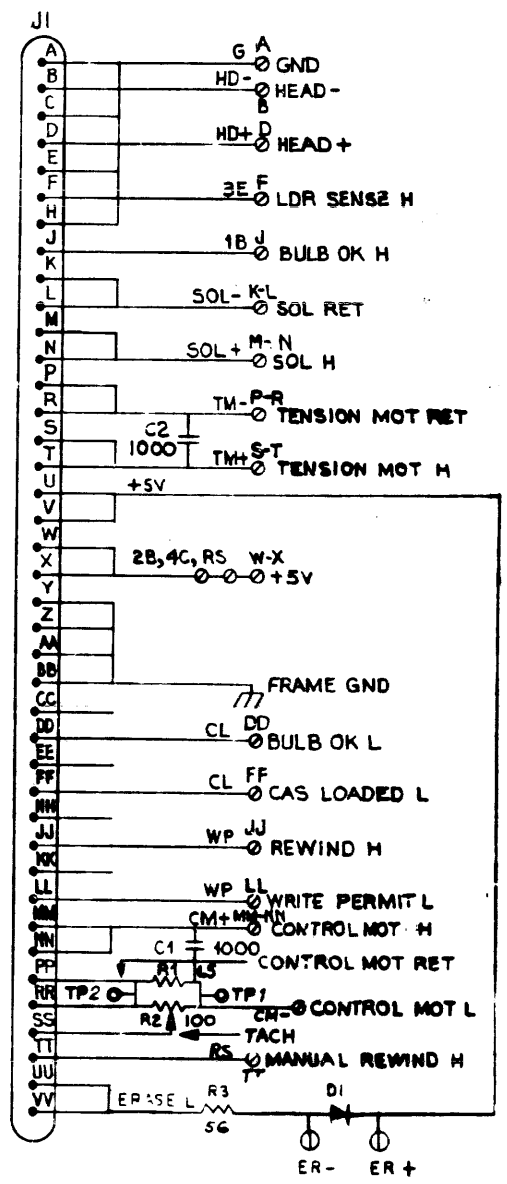
REV N
ITEM NO. 1
SIZE CODE D CSM 7761-0-1
REV N
ITEM NO. 1



FIRST USED ON OPTION/MODEL	QTY	DESCRIPTION	PART NO.	ITEM NO.
TU60		PARTS LIST		
UNLESS OTHERWISE SPECIFIED DIMENSION IN INCHES TOLERANCES				
DECIMALS	ANGLES	digital EQUIPMENT CORPORATION MILFORD MASSACHUSETTS		
XXX - 008	10° 30'	TITLE READ/WRITE AND SERVO (READ CIRCUITS)		
REMOVE BURRS AND BREAK SHARP CORNERS SURFACE QUALITY				
MATERIAL	NEXT HIGHER ASSY	SIZE CODE	NUMBER	REV.
SS	B-DD-TU60-0	DGS	M7761-0-1	N
FINISH	SCALE	SHEET	OF	
SS	5 - 5	5	5	

7. Drawing and specifications herein, are the property of Digital Equipment Corporation and shall not be reproduced or copied or used in whole or in part as the basis for the manufacture or sale of items without written permission.

NOTES:
 1. UNLESS OTHERWISE SPECIFIED:
 RESISTANCE IS IN OHMS,
 CAPACITANCE IS IN PICOFARADS.



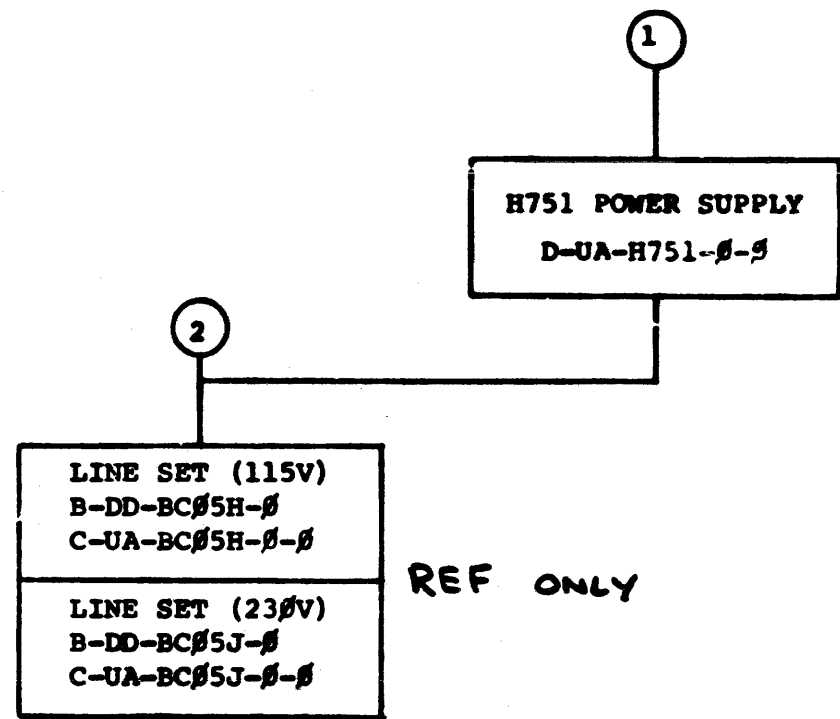
IC TYPE	GND	+5V
GND AND 5V ARE USUALLY PIN 7 AND 14 RESPECTIVELY. EXCEPTIONS ARE STATED ABOVE.		
IC PIN LOCATIONS		

QTY	REF DESIGNATION	DESCRIPTION	PART NO.	ITEM NO.
1	W1	NO. 22 AWG	9107560-01	14
1	D1	DIGIF 0664	1100114	13
1	R3	RES 56 1/2 W 5% CC	1309995	12
REF		TERMINATOR CASSETTE DRIVE ASSY	D-IA-5010134-0-0	11
2	TP1, TP2	TURRET LUG #1026-2	9007791	10
2	C1, C2	CAP 1000 DM	1000042	9
1	R1	RES 1.5 10W WIRE WOUND	1311112	8
1	R2	RES 100 3/4W 1/2 PO 76PR	1309143-04	7
1	J1	CONNECTOR 40 TERMINAL	1210073	6
21		SPLIT LUGS	9006735	5
REF		MODULE ECO HISTORY	B-MH-5410135-0-4	4
REF		X-Y COORDINATE HOLE LOCATION	1-0-5410135-0-4	3
1		ETCHED CIRCUIT BOARD	EDIC134	1

FIRST USED OR OPTION MODEL		PARTS LIST	
T11-9		ETCH BOARD REV	E
DRN	DATE	EQUIPMENT CORPORATION MAYNARD, MASSACHUSETTS	
CHKD	DATE	TITLE TERMINATOR, CASSETTE DRIVE	
ENG	DATE	NUMBER D-IA-7009041-0-0	
APP'D	DATE	REV. E	
REV'D	DATE	SCALE 2/1	
NEXT HIGHER ASSY		SHEET OF 1	
D-IA-7009041-0-0		D-IA-7009041-0-0	
SEMICONDUCTOR CONVERSION CHART		D-IA-7009041-0-0	

5410135-00002 D	2-18-74	A. S. FLOURIE
5410135-00001 C	11/27/72	A. S. FLOURIE
5410135-00003 E	11/27/72	A. S. FLOURIE
5410135-00004 F	3-15-73	A. S. FLOURIE
5410135-00005 G	2-18-74	A. S. FLOURIE
5410135-00006 H	2-18-74	A. S. FLOURIE
5410135-00007 I	2-18-74	A. S. FLOURIE
5410135-00008 J	2-18-74	A. S. FLOURIE
5410135-00009 K	2-18-74	A. S. FLOURIE
5410135-00010 L	2-18-74	A. S. FLOURIE

REV. E
NUMBER
D-IA-7009041-0-0



TITLE	SHEET 2 OF 3	SIZE CODE	NUMBER	REV
H751 POWER SUPPLY	B DD	H751-β	E	

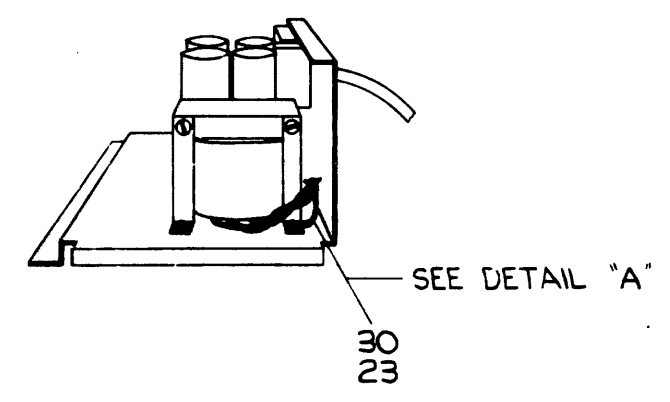
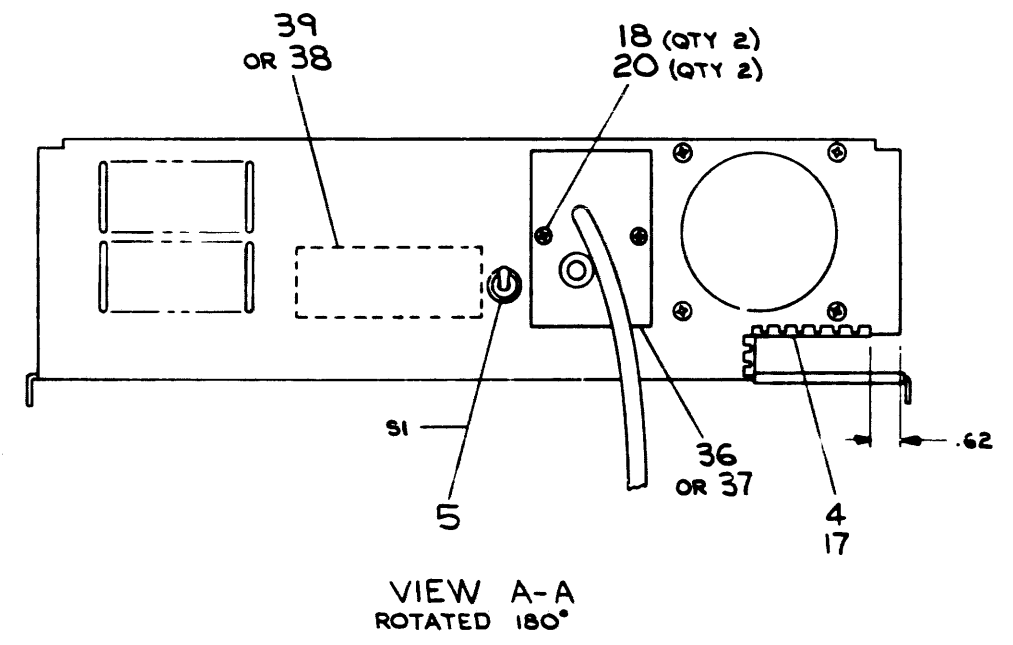
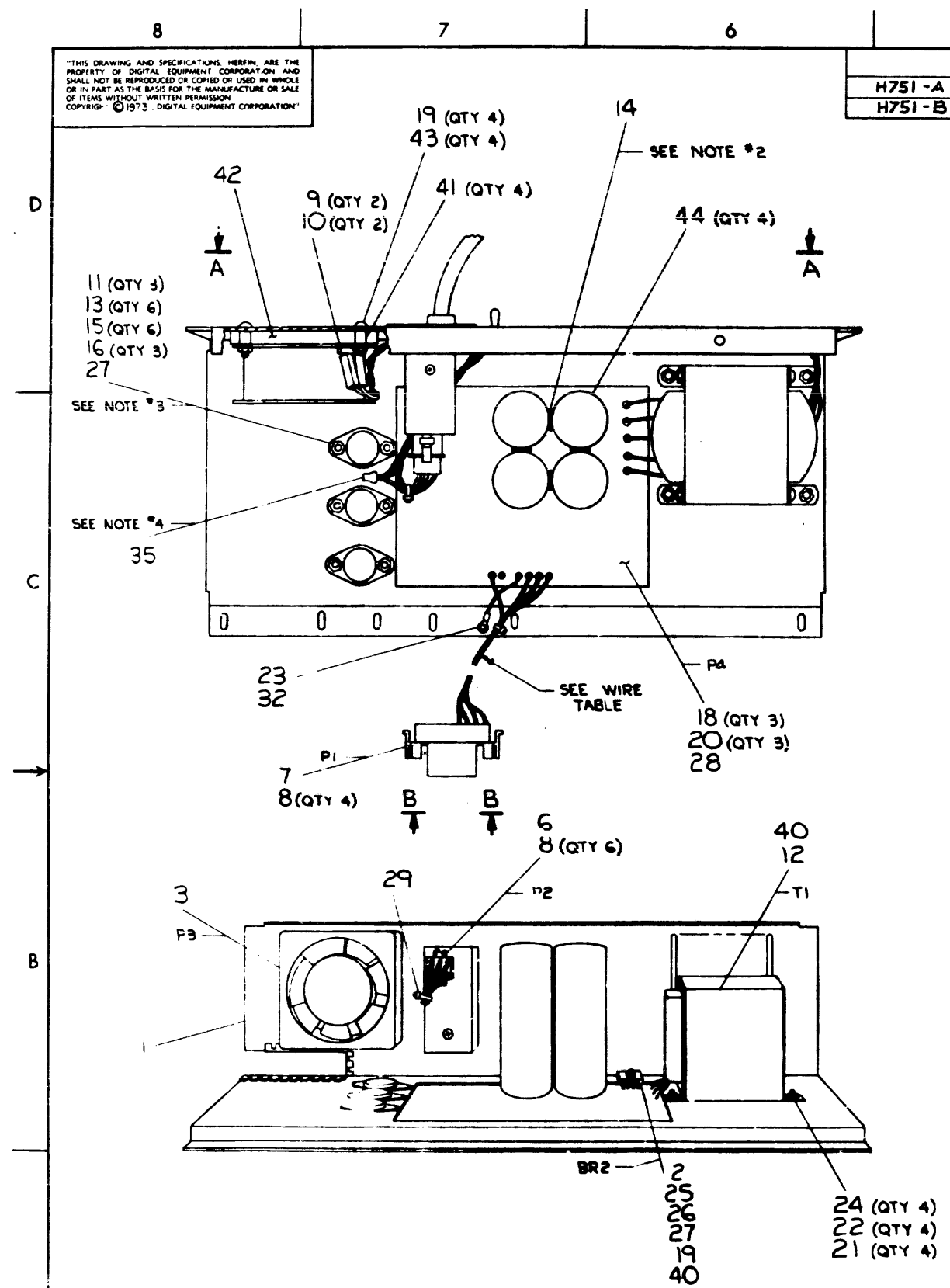
CUSTOMER PRINT SET		ELECTRICAL					CUSTOMER PRINT SET		MECHANICAL					
H751-β		MPG. SET	P/NO. NO.	REV	NO OF SHT	DESCRIPTION	OPTION NO./FILE DATE	H751-β	MPG. SET	P/NO. NO.	REV	NO OF SHT	DESCRIPTION	OPTION NO./FILE DATE
X			1	E	2	H751 POWER SUPPLY				1	#	2	H751 POWER SUPPLY	
X				E	2	H751 POWER SUPPLY (PL)					#	2	H751 POWER SUPPLY (PL)	
X					1	CHASSIS, POWER SUPPLY					#	2	H751 POWER SUPPLY (PL)	
X				B	1	CIRCUIT SCHEMATIC H751						1	CHASSIS, POWER SUPPLY	
X				#	2	CIRCUIT SCHEMATIC								
			2	#	3	LINE SET								
					1	LINE SET BCØ5H (115V)								
					1	LINE SET BCØ5J (230V)								

CUSTOMER PRINT SET CODES	X = PRINT OF DOCUMENT INCLUDED IN PRINT SET	TITLE	SIZE	CODE	NUMBER	REV
	C = INCLUDES ALL PRINTS INDICATED ON DOCUMENT					
	S = CONFIDENTIAL AUTHORIZED SIGNATURE REQUIRED					

"THIS DRAWING AND SPECIFICATIONS HEREIN ARE THE PROPERTY OF DIGITAL EQUIPMENT CORPORATION AND SHALL NOT BE REPRODUCED OR COPIED OR USED IN WHOLE OR IN PART AS THE BASIS FOR THE MANUFACTURE OR SALE OF ITEMS WITHOUT WRITTEN PERMISSION. COPYRIGHT © 1973, DIGITAL EQUIPMENT CORPORATION"

LEGEND	
H751-A	115 V
H751-B	230 V

- NOTES:
1. MOUNT ITEM # 28 (CASSETTE POWER SUPPLY) TO ITEM #1 (CHASSIS) BEFORE MOUNTING ITEMS #2, #11, & #12.
 2. USE ITEM #14 (TAPE) BETWEEN EACH OF FOUR LARGE CAPACITORS AS SHOWN.
 3. ITEM #27 (COMPOUND) TO BE APPLIED TO BOTH SIDES OF ITEM #16 (WASHER) BEFORE ASSEMBLY.
 4. USE CRIMP TOOL #45219 FOR ITEM #35.
 5. #'S IN PARENTHESIS INDICATE QUANTITY USED AT THAT LOCATION.

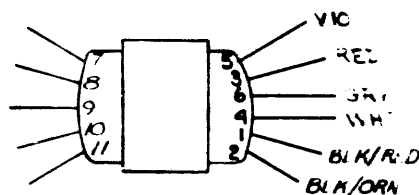


REV	DATE	BY	CHK	DESCRIPTION
D				CHANGE NO. H751-00004
E				REVISED BY REDBURN
				R. THEILFN
				M. LEIS
				H751-00004
				M. LEIS

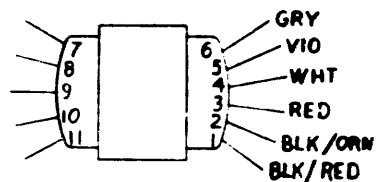
FIRST USED ON OPTION/MODEL	QTY.	DESCRIPTION	PART NO.	ITEM NO.
TU60				
UNLESS OTHERWISE SPECIFIED DIMENSION IN INCHES	DRN. F. CARBERRY	DATE 9-25-72	PARTS LIST	
TOLERANCES	CHK'D. B. MAJOR	DATE 0-25-72		
DECIMALS	ENG. LARRY NARHI	DATE 0-25-72	TITLE	
ANGLES	PROJ. ENG. M. EIS	DATE 0-25-72		
REMOVE BURRS AND BREAK SHARP CORNERS SURFACE QUALITY Y	PROD. B. DIGREGORIO	DATE 0-25-72	H751 POWER SUPPLY	
MATERIAL	NEXT HIGHER ASSY.			
FINISH	B-DD-H751-0	SCALE NONE	SIZE CODE	NUMBER
	SHEET 1 OF 2		DUA	H751-0-0
			DIST	REV. E

This drawing and specifications herein are the property of Digital Equipment Corporation and shall not be reproduced or copied or used in whole or in part as the basis for the manufacture or sale of items without written permission 1973

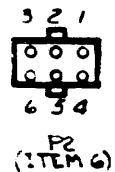
ITEM NO	DESCRIPTION		FROM		TO		REMARKS	LENGTH (IN)
	AWG	COLOR	CONN	WITH	CONN	WITH		
5	18	BLK	S1-1	—	P2-1	8		DO NOT CUT
5	18	BLK	S1-2	—				DO NOT CUT
12	18	BLK/RED	T1-1	—		35	SEE NOTE 4	15
32	18	BLK	P2-4	8				3
12	18	VIO	T1-5	—	P3-1	9,10		18
12	18	RED	T1-3	—	P2-5	8		18
12	18	WHT	T1-4	—	P2-3	8		18
30	18	GRN	P2-2	8	GND	23	SEE DETAIL A	16
12	18	GRY	T1-6	—	P3-2	9,10		18
12	18	—	T1-7	40	P4-7		SOLDER	1/4
12	18	—	T1-8	40	P4-8		SOLDER	1/4
2	8	—	T1-9	40	P4-9		SOLDER	1/4
12	18	—	T1-10	40	P4-10		SOLDER	1/4
12	18	—	T1-11	40	P4-11		SOLDER	1/4
31	18	RED	P4-+5V	SOLDER	P1-4	8		16
33	8	ORN	P4-+15V	SOLDER	P1-1	8		16
34	18	BLU	P4--15V	SOLDER	P1-2	8		16
32	18	BLK	P4-GND	SOLDER	P1-3	8		16
12	18	BLK/ORN	T1-2	—	P2-6	8		18
2	—	—	BR2-(+)	40	P4-(+)		SOLDER	1
2	—	—	BR2-(-)	40	P4-(-)		SOLDER	1
2	—	—	BR2-A	40	P4-A		SOLDER	1
2	—	—	BR2-B	40	P4-B		SOLDER	1
32	18	BLK	P4-GND	SOLDER	—	23		2



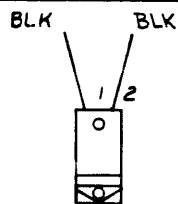
T1 TOP VIEW (ITEM 12)



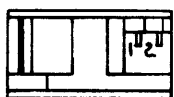
T1 (ALTERNATE VENDOR)



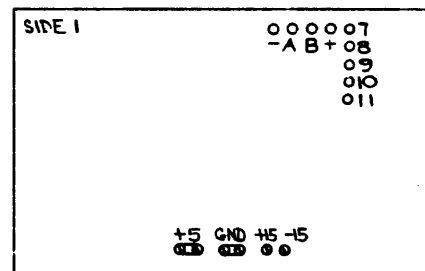
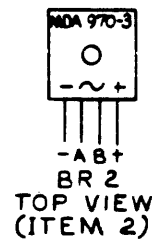
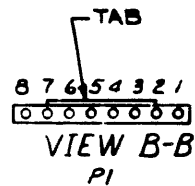
P2 (ITEM 6)



S1 REAR VIEW (ITEM 5)



P3 (ITEM 3) TOP VIEW



P4 (ITEM 28)

FIRST USED ON OPTION/MODEL	QTY.	DESCRIPTION	PART NO.	ITEM NO.
TU60				
PARTS LIST				
UNLESS OTHERWISE SPECIFIED DIMENSION IN INCHES TOLERANCES	DRN <i>[Signature]</i> DATE 9/26/77	DATE	digital EQUIPMENT CORPORATION MAYNARD MASSACHUSETTS	
DECIMALS ANGLES	CHKD <i>[Signature]</i> DATE 10/2/77	DATE	TITLE	
.XXX - .005 XX - .02 X - .1	ENG <i>[Signature]</i> DATE 10-25-77	DATE	H751 POWER SUPPLY	
REMOVE BURRS AND BREAK SHARP CORNERS SURFACE QUALITY	PROJ. ENG. <i>[Signature]</i> DATE 10/2/77	DATE	NEXT HIGHER ASSY.	
MATERIAL	PROD. <i>[Signature]</i> DATE 10/26/77	DATE	B-00-H751-0	
FINISH			SCALE NONE	
			SHEET 2 OF 2	
			SIZE CODE DUA H751-0-0	
			NUMBER	
			REV. E	

REV	CHANGE NO

DIGITAL EQUIPMENT CORPORATION
MAYNARD, MASSACHUSETTS

QUANTITY / VARIATION

PARTS LIST

MADE BY F. CARBERRY
DATE 9/19/72
ENG Gary Mackley
DATE 10/26/72

CHECKED W. MAJOR
DATE 10/6/72
PROD Bob DeFronzo
DATE 10/26/72

SECTION 1

ISSUED SECT. 1

ITEM NO	DWG NO. / PART NO.	DESCRIPTION	H751-A	H751-B	QUANTITY / VARIATION	REV	ECO NO
1	F-1A-191-0-0	CHASSIS, POWER SUPPLY	1	1			
2	1110208	DIODE ARRAY MDA970-3 (BR2)	1	1			
3	1210719	PAN, BOXER 115V, 25-35 CUFT	1	1			
4	9007036	GROMMET, CARBIPILAR	A/R	A/R			
5	1203376	SWITCH, TOGGLE SPST	1	1			
6	1209351-06	CONNECTOR, MATE-N-LOCK 6 PIN	1	1			
7	1209340-01	CONNECTOR, MATE-N-LOCK 8 PIN	1	1			
8	1209378-01	PIN, MATE-N-LOCK	10	10			
9	1210820-01	MINI-FASTA8, HOUSING #1-480417-0	2	2			
10	1210820-02	MINI-FASTAB, PIN #60291-1	2	2			
11	1505819	TRANSISTOR, 2N3055 (Q2, Q3, Q4)	3	3			
12	1611096	TRANSFORMER, MMC 4565-1/T72105 (T1)	1	1			
13	9006012-1	SCR, #4-40 x 7/16, PHL PAN HD	6	6			
14	9007834	TAPS, DOUBLE SIDED, 1/2 INCH	A/R	A/R			
15	9006557	KEP NUT #4	6	6			
16	9006721	WASHER, INSULATING	3	3			
17		LOCITE, IS-158	A/R	A/R			
18	9006633	LOCK WASHER #6, INT TOOTH	5	5			
19	9008185	KEP NUT #6	5	5			
20	9006020-1	SCR, 6-32 x 1/4, PHL PAN HD	5	5			
21	9006039-1	SCR, 8-32 x 1/4, PHL PAN HD	4	4			
22	9006666	WASHER, FLAT, #8	4	4			

TITLE H751 POWER SUPPLY ASSY NO. D-UA-H751-β-β SIZE CODE A PL NUMBER H751-β-β REV E ECO NO H751-00005

DEC FORM DEC 16 (325) 1031-N870
DRA 110

SHEET 1 OF 2

DIGITAL EQUIPMENT CORPORATION
MAYNARD, MASSACHUSETTS

PARTS LIST

MADE BY F. CARBERRY
DATE 9/19/72
ENG Gary Mackley
DATE 10/26/72

CHECKED W. MAJOR
DATE 10/6/72
PROD Bob DeFronzo
DATE 10/26/72

SECTION 1

ISSUED SECT. 1

ITEM NO	DWG NO. / PART NO.	DESCRIPTION	H751-A	H751-B	QUANTITY / VARIATION	REV	ECO NO
23	9006776	CONN, SOLDERLESS, AMP #31889	2	2			
24	9006563	KEP NUT, #8	4	4			
25	9007793-1	SCR, #6-32 x 9/16, PHL PAN HD	1	1			
26	9006656	WASHER, FLAT, #6	1	1			
27	9008268	COMPOUND, THERMAL JOINT	A/R	A/R			
28	D-CS-5410131-0-1	CASSETTE POWER SUPPLY	1	1			
29	9007031	CABLE TIE, PANDUIT, SST 1 M	A/R	A/R			
30	9107360-55	WIRE, #18 AWG STRD, IPVC, GRN	A/R	A/R			
31	9107360-22	WIRE, #18 AWG, STRD, IPVC, RED	A/R	A/R			
32	9107360-00	WIRE, #18 AWG, STRD, IPVC, BLK	A/R	A/R			
33	9107360-2	WIRE, #18 AWG, STRD, IPVC, ORN	A/R	A/R			
34	9107360-66	WIRE, #18 AWG, STRD, IPVC, BLU	A/R	A/R			
35	9009541	SPLICE, CLOSED END JWP #36965	1	1			
36	C-UA-BC85R-β-β	LINE CORD SET, 115VAC	1				
37	C-UA-BC85J-β-β	LINE CORD SET, 230VAC	1				
38	A-DC-5310297-0-0	H751-A DECAL (115V)	1				
39	A-DC-5310298-0-0	H751-B DECAL (230V)	1				
40	9107278-00	TUBING, BLACK, TFE #18AWG	A/R	A/R			
41	3007615	1/4 X 1/4 X 6 ROUND FIBER SPACER	4	4			
42	A-PS-1211343-0-0	FILTER	1	1			
43	5006025-1	SCR, 6-32 X 5/8 PHL PAN HD.	4	4			
44	1011023	CAP, 14000 UF, 20V, (C7, C8, C9, C10)	4	4			

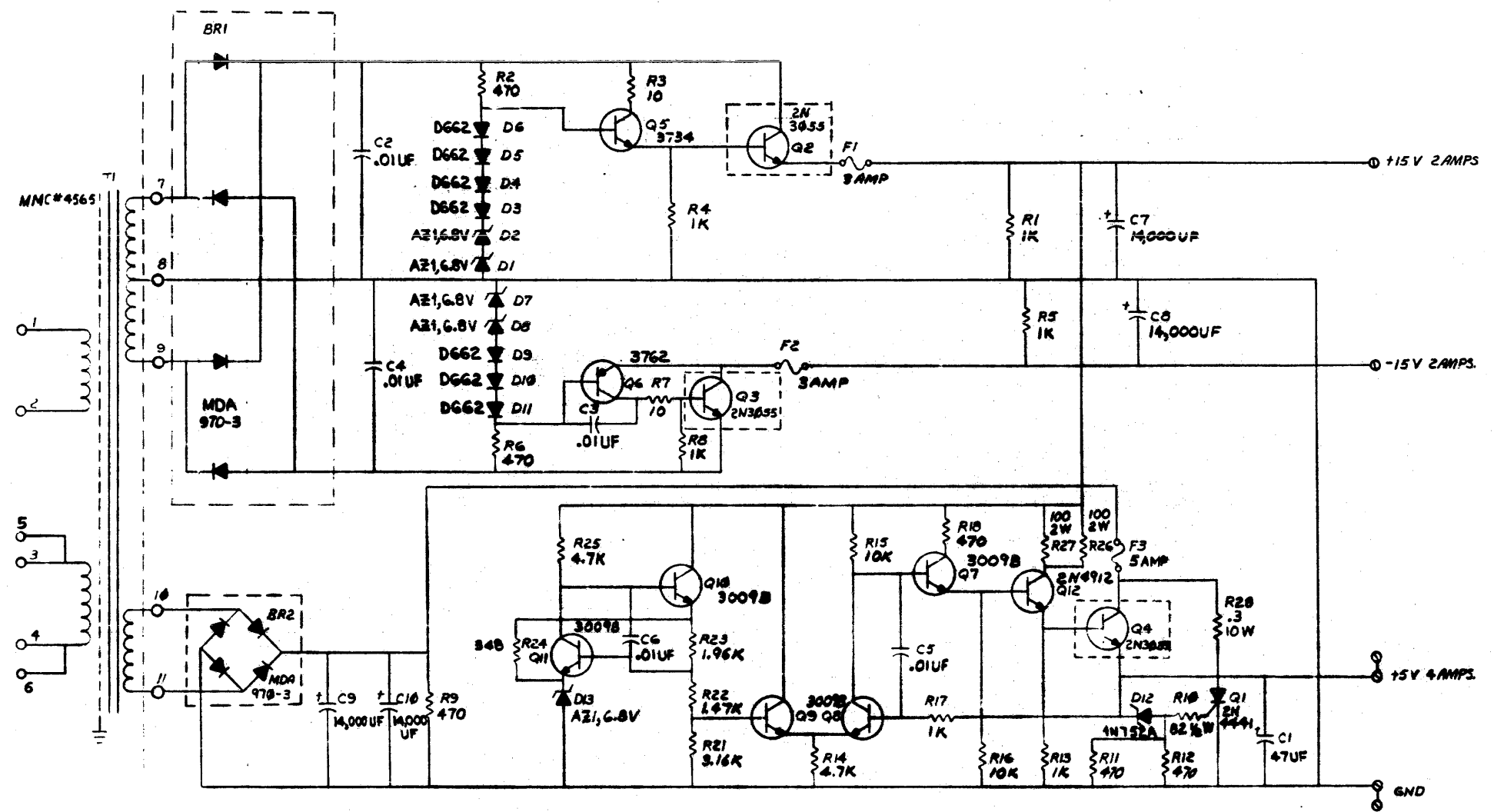
TITLE H751 POWER SUPPLY ASSY NO. D-UA-H751-β-β SIZE CODE A PL NUMBER H751-β-β REV E ECO NO

DEC FORM DEC 16 (325) 1031-N870
DRA 110

SHEET 2 OF 2

The drawing and specifications, herein, are the property of Digital Equipment Corporation and shall not be reproduced or copied in whole or in part on the basis for the manufacture or sale of items without written permission.

CS 5410131-01 2



O INDICATES HOLES FOR DIODE BRIDGE
Q2, Q3, Q4, BR2 & T1 ARE MOUNTED ON
CHASSIS/HEAT SINK

QTY	REF DESIGNATION	DESCRIPTION	PART NO.	ITEM NO.
PARTS LIST				
ETCH BOARD REV C				
digital EQUIPMENT CORPORATION MAYFORD, MASSACHUSETTS				
TITLE CASSETTE POWER SUPPLY				
DEC NO.			EIA NO.	
DEC NO.			EIA NO.	
NEXT HIGHER ASSY				
SCALE				
SHEET 2 OF 2				
SIZE CODE			NUMBER	
DCS 5410131-0-1			REV. E	
DIST.				

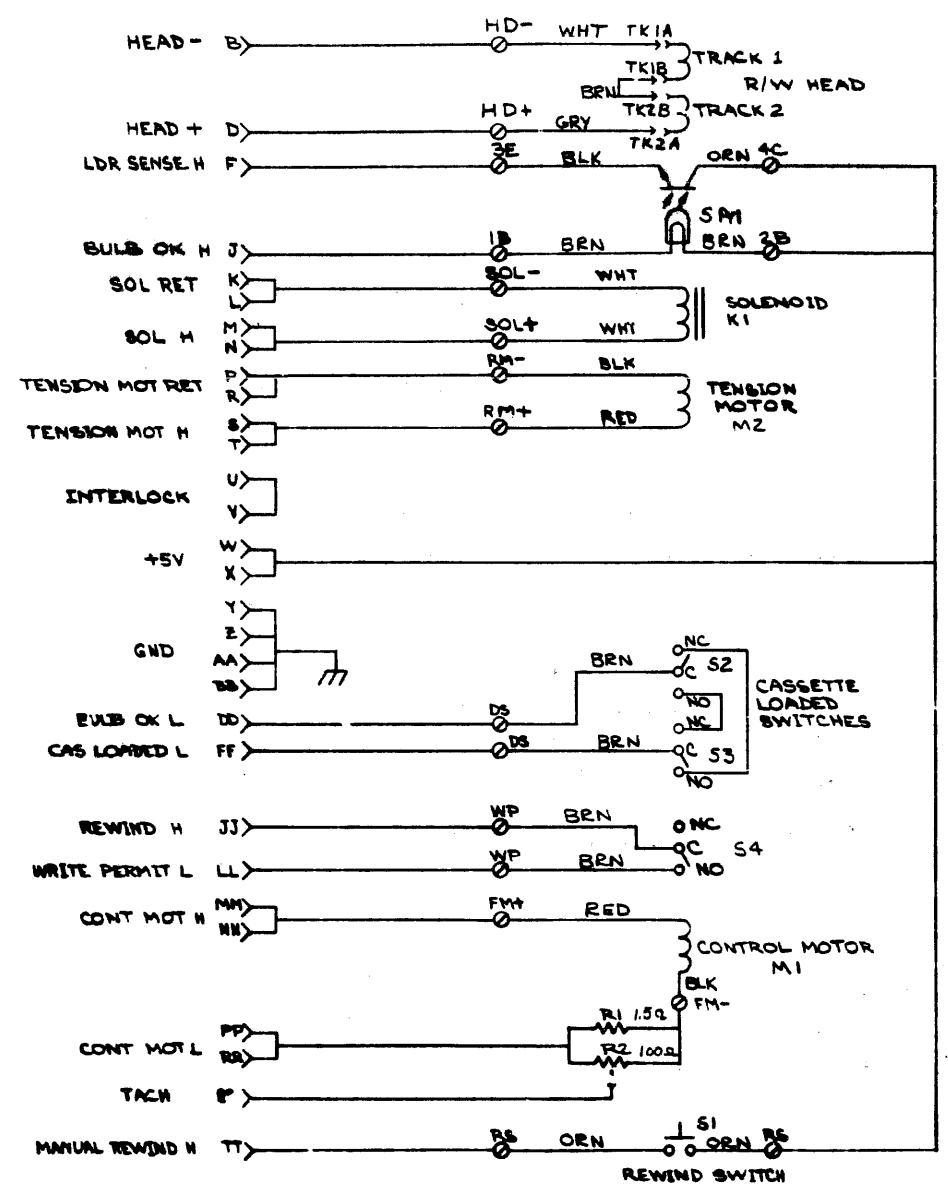
The drawing and specifications herein are the property of Digital Equipment Corporation and shall not be reproduced or copied or used in whole or in part on the basis for the manufacture or sale of items without written permission.

COPYRIGHT © 1972, DIGITAL EQUIP. CORP.

GM-0-0911 CW 2

NOTES:

- SWITCHES ARE SHOWN WITH "CAS LOADED" AND "WRITE PERMIT" ACTIVATED.
- CONNECT WIRE (ITEMS #44 & #45) TO HEAD (ITEM #20) USING CONNECTOR PINS SUPPLIED WITH HEAD (ITEM #20). SEE DETAIL "A".



PART USED OR OPTION/MODEL	QTY.	DESCRIPTION	PART NO.	ITEM NO.
TU60		PARTS LIST		
UNLESS OTHERWISE SPECIFIED DIMENSIONS IN INCHES TOLERANCES	DATE 12/17/72	EQUIPMENT CORPORATION MAYFORD MASSACHUSETTS		
DECIMALS	ANGLES	TITLE CASSETTE DRIVE WIRING DIAGRAM		
.XXX - .000 .XX - .02 .X - .1	16° 30'	DATE 12/17/72		
REMOVE BURRS AND BREAK SHARP CORNERS SURFACE QUALITY	DATE 12/17/72			
MATERIAL	NEXT HIGHER ASSY.	SIZE CODE	NUMBER	REV.
SS	B-00-TU60-0	DWD	TU60-0-WD	
FINISH	SCALE	SHEET	OF	DIST.
SS	1	1	1	

REV	REVISIONS
1	CHANGE NO
2	CHK

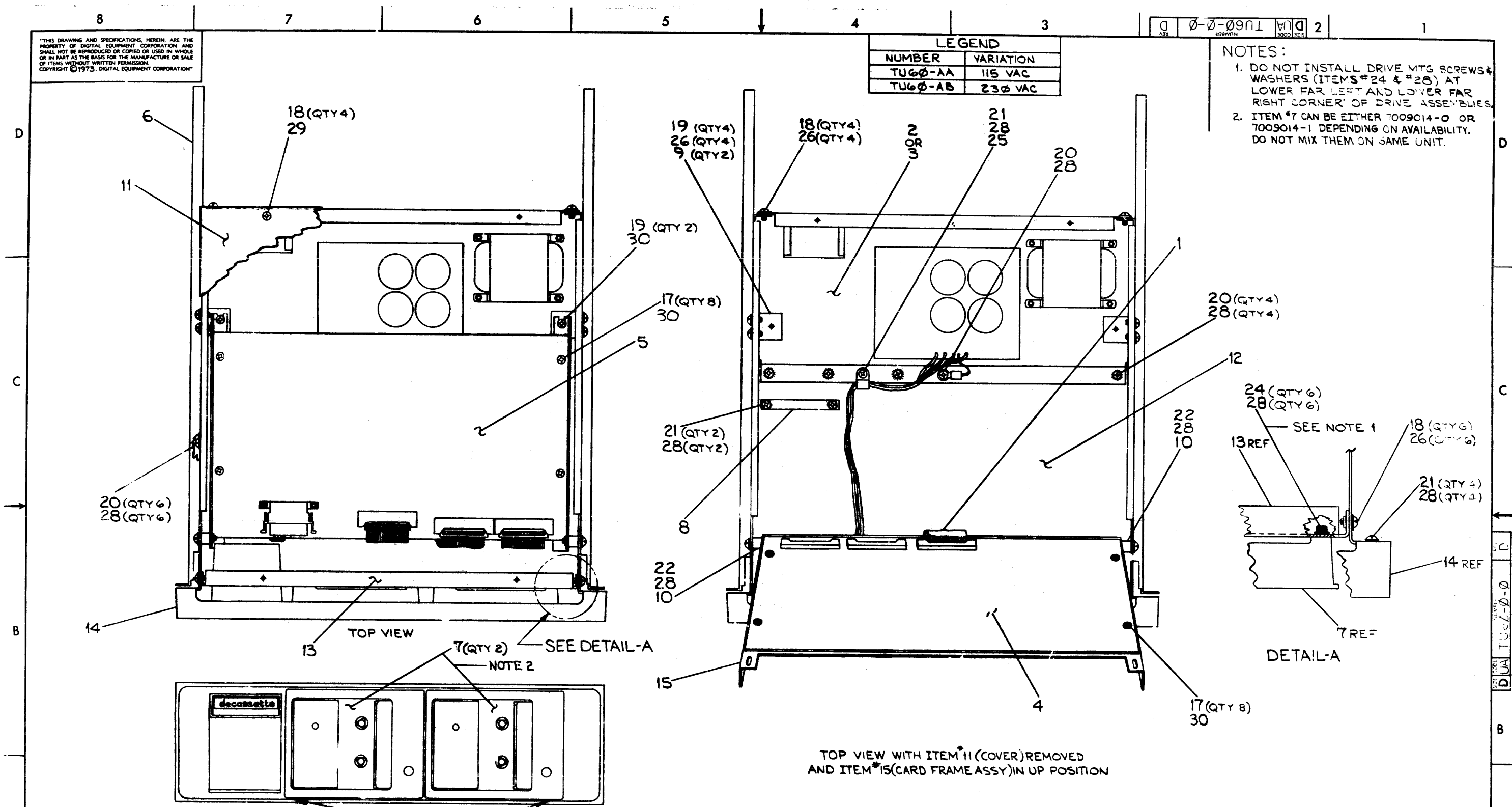
DEC FORM NO. 000 102-R

REV. 1
PART NO. 0-0-WD

"THIS DRAWING AND SPECIFICATIONS HEREIN ARE THE PROPERTY OF DIGITAL EQUIPMENT CORPORATION AND SHALL NOT BE REPRODUCED OR COPIED OR USED IN WHOLE OR IN PART AS THE BASIS FOR THE MANUFACTURE OR SALE OF ITEMS WITHOUT WRITTEN PERMISSION. COPYRIGHT © 1973, DIGITAL EQUIPMENT CORPORATION"

LEGEND	
NUMBER	VARIATION
TU60-AA	115 VAC
TU60-AB	230 VAC

NOTES:
 1. DO NOT INSTALL DRIVE MTG SCREWS & WASHERS (ITEMS #24 & #28) AT LOWER FAR LEFT AND LOWER FAR RIGHT CORNER OF DRIVE ASSEMBLIES.
 2. ITEM #7 CAN BE EITHER 7009014-0 OR 7009014-1 DEPENDING ON AVAILABILITY. DO NOT MIX THEM ON SAME UNIT.



TOP VIEW WITH ITEM #11 (COVER) REMOVED AND ITEM #15 (CARD FRAME ASSY) IN UP POSITION

REV	CHANGE NO	DATE	BY	CHK'D
B	TU60-00012			
A	TU60-00011			
C	TU60-00013			
D	TU60-00014			

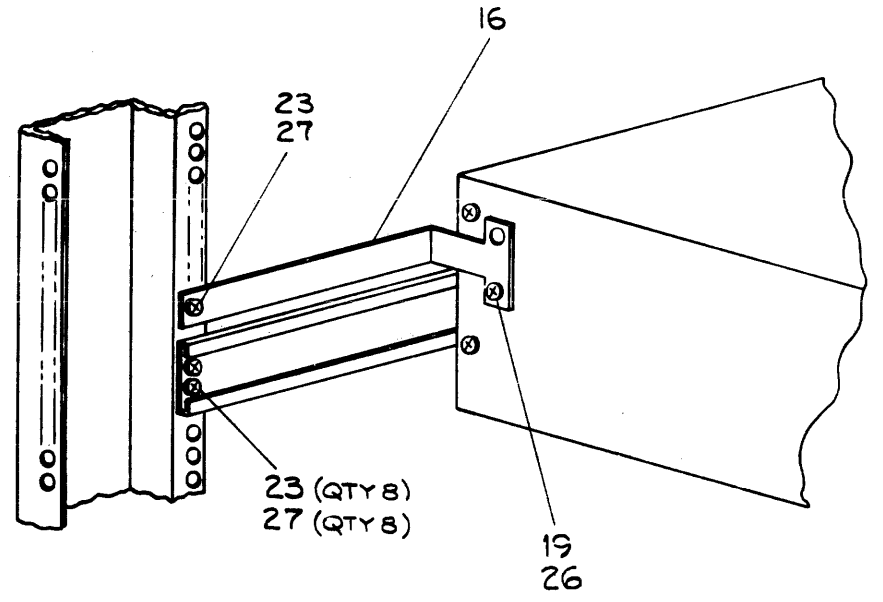
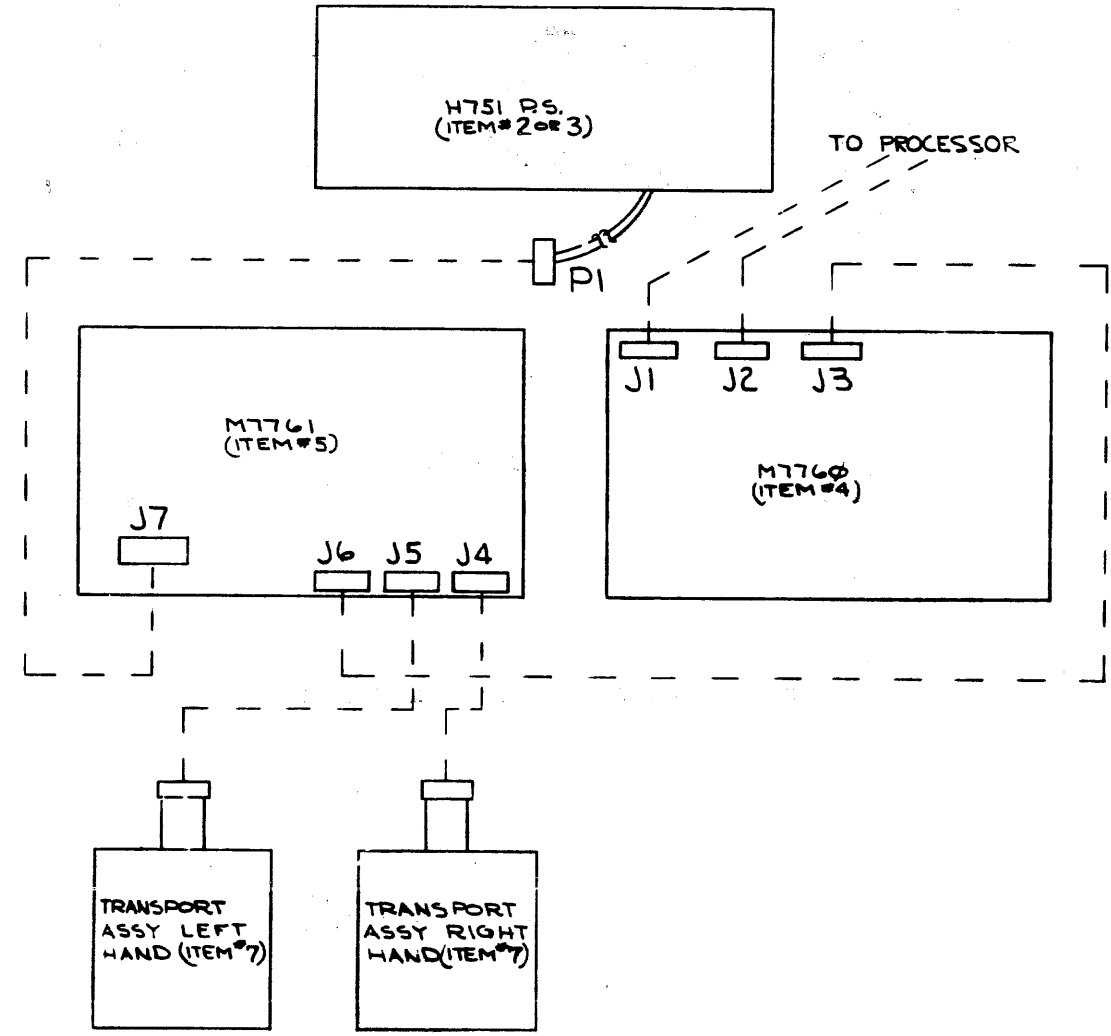
FIRST USED ON OPTION/MODEL	QTY.	DESCRIPTION	PART NO.	ITEM NO.
TU60				
PARTS LIST				
UNLESS OTHERWISE SPECIFIED DIMENSION IN INCHES				
TOLERANCES				
DECIMALS	ANGLES	DATE		
.XXX = .006	±0° 30'	DRN. G. FLANDERS	12/20/72	
.XX = .02		CHK'D. W. MAJUR	1/11/73	
.X = .1		ENG. M. LEIS	1/5/73	
REMOVE BURRS AND BREAK SHARP CORNERS SURFACE QUALITY ✓		PROJ. ENG. M. LEIS	1/15/73	
		PROD. M. LEIS	1/15/73	
MATERIAL				
NEXT HIGHER ASSY.				
FINISH				
TITLE		SIZE CODE	NUMBER	REV.
TU60 UNIT ASSY		B-DD-TU60-0	DUA TU60-0-0	D
SCALE		SHEET	OF	
		1	2	

This drawing and specifications, herein, are the property of Digital Equipment Corporation and shall not be reproduced or copied in whole or in part as the basis for the manufacture or sale of items without written permission.

COPYRIGHT © 1972 DIGITAL EQUIPMENT CORPORATION.

ASSY CONNECTIONS			
FROM		TO	
ITEM NO	DESCRIPTION	ITEM NO	DESCRIPTION
2023	H751 P.S.-PI	5	M7761-J7
7	TRANSPORT ASSY LEFT	5	M7761-J5
7	TRANSPORT ASSY RIGHT	5	M7761-J4

CABLE CONNECTIONS		
ITEM NO	FROM	TO
1	M7761-J6	M7760-J3



LOCATION OF SHIPPING BRACKET (ITEM#16) WHEN UNIT IS SUPPLIED IN CABINET

DEC FORM NO. DRD 180-A

REVISIONS

REV.	CHANGE NO.

FIRST USED ON OPTION/MODEL	QTY.	DESCRIPTION	PART NO.	ITEM NO.
PARTS LIST				
UNLESS OTHERWISE SPECIFIED DIMENSIONS IN INCHES TOLERANCES	DRN <i>[Signature]</i>	DATE 12/2/72	digital EQUIPMENT CORPORATION NATYARD ST., BACHUBETTS	
DECIMALS .XXX = .005 .XX = .02 .X = .1	CHKD <i>[Signature]</i>	DATE 11/1/73		
ANGLES ±0° 30'	ENG <i>[Signature]</i>	DATE 1/13/73	TITLE TU60 UNIT ASSY	
REMOVE BURRS AND BREAK SHARP CORNERS SURFACE QUALITY	PROJ. ENG. <i>[Signature]</i>	DATE 1/11/73		
MATERIAL	PROD. <i>[Signature]</i>	DATE 1/11/73	NEXT HIGHER ASSY.	
FINISH	SCALE	SHEET 2 OF 2	SIZE CODE DUA	NUMBER TU60-0-0
			DIST.	REV. D

DIGITAL EQUIPMENT CORPORATION
MAYNARD, MASSACHUSETTS

QUANTITY / VARIATION

PARTS LIST

MADE BY G. FINDERS
DATE 12/20/73
ENG M. LEIS
DATE 1/12/73

CHECKED W. MAJOR
DATE 1/3/73
PROD M. LEIS
DATE 1/12/73

ITEM NO	DWG NO. / PART NO.	DESCRIPTION	TU60-AA	TU60-AB	QUANTITY / VARIATION
1	D-UA-BC05-B	CABLE, JUMPER	1	1	
2	D-UA-H751-A	H751 POWER SUPPLY (115V)	1	1	
3	D-UA-H751-B	H751 POWER SUPPLY (230V)	1	1	
4	D-CS-M7760-B-1	TU60 LOGIC	1	1	
5	D-CS-M7761-B-1	READ/WRITE AND SERVO	1	1	
6	D-PS-1209154-0-0	CHASSIS-TRAK (PAIR)	1	1	
7	D-AD-7009014-0-0	TRANSPORT ASSY (TU60) (SEE NOTE 2 ON UA)	2	2	
8	C-MD-7409479-0-0	PLATE, PRESSURE	1	1	
9	C-MD-7409904-0-0	BRACKET, SYMMETRICAL	2	2	
10	B-MD-7409933-0-0	BUSHING, PIVOT	2	2	
11	E-MD-7409941-0-0	COVER, CHASSIS	1	1	
12	E-1A-7409943-0-0	CHASSIS (TU60)	1	1	
13	D-1A-74009990-0-0	PLATE, CHASSIS, FRONT (TU60)	1	1	
14	D-1A-7410556-0-0	BEZEL ASSY	1	1	
15	D-1A-7410604-0-0	CARD FRAME ASSY	1	1	
16	C-MD-7410690-0-0	BRACKET, SHIPPING	1	1	
17	9006020-1	SCR, PHL PAN HD#6-32 x 1/4 LG	16	16	
18	9006020-3	SCR, PHL TRUSS HD#6-32 x 1/4 LG	14	14	
19	9006021-3	SCR, PHL TRUSS HD #6-32 x 5/16 LG	7	7	
20	9006035-3	SCR, PHL TRUSS HD #8-32 x 1/4 LG	11	11	
21	9006037-3	SCR, PHL TRUSS HD #8-32 x 3/8 LG	7	7	
22	9006040-3	SCR, PHL TRUSS HD #8-32 5/8 LG	2	2	

TITLE TU60 UNIT ASSY
ASSY NO. D-UA-TU60-B-0
SHEET 1 OF 2
SIZE CODE A PL
DIST TU60-B-0
REV U
ECO NO TU60 00014

DEC FORM DFC 16 (75) 1031-NR70
DRAWING

DIGITAL EQUIPMENT CORPORATION
MAYNARD, MASSACHUSETTS

QUANTITY / VARIATION

MADE BY G. FINDERS
DATE 12/20/73
ENG M. LEIS
DATE 1/12/73

CHECKED W. MAJOR
DATE 1/3/73
PROD M. LEIS
DATE 1/12/73

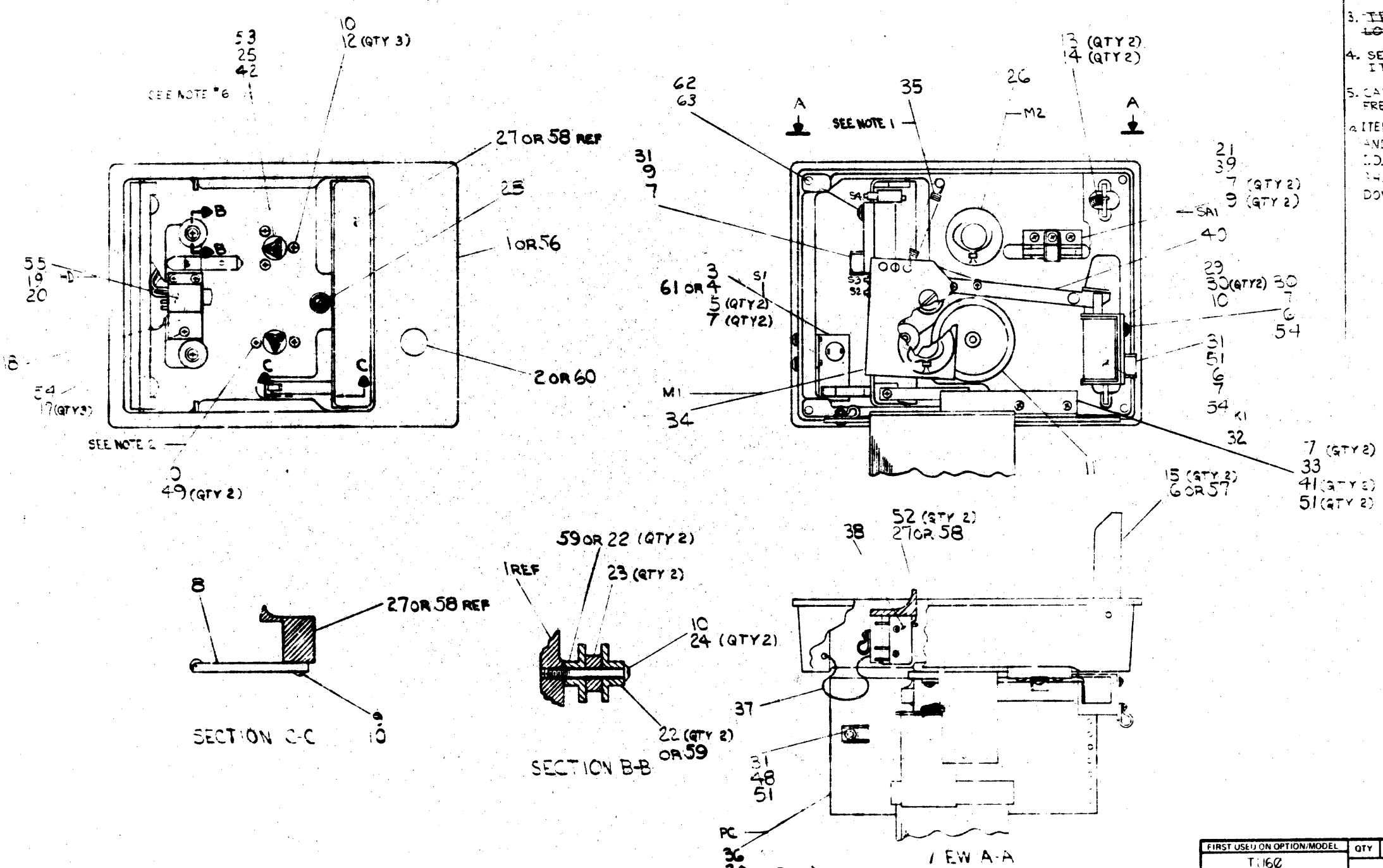
ITEM NO	DWG NO. / PART NO.	DESCRIPTION	TU60-AA	TU60-AB	QUANTITY / VARIATION
23	9006071-3	SCR, PHL TRUSS HD #10-32 x 3/8 LG	9	9	
24	9006337-8	SCR, SOCKET HD #8-32 x 3/8 LG	6	6	
25	9007080	CABLE CLAMP 3/16	1	1	
26	9007649	LOCKWASHER #6 EXT TOOTH	15	15	
27	9007786	NUT, #10-32 TINNERMAN	9	9	
28	9008072	LOCKWASHER # 8 EXT TOOTH	26	26	
29		LOC TITE 242	A/RA/R	A/R	
30		TORQUE SEAL	V/R	A/R	
31	3611226	DEC ISO CASSETTE	2	2	

TITLE TU60 UNIT ASSY
ASSY NO. D-UA-TU60-B-0
SHEET 2 OF 2
SIZE CODE A PL
DIST TU60-B-0
REV D
ECO NO

DEC FORM DFC 16 (75) 1031-NR70
DRAWING

LEGEND	
NUMBER	VARIATION
7009014-0	SAND CASTING
7009014-1	DE CASTING

- NOTES:
1. SET SPRING TENSION 45.55 GRAMS MEASURED ON ROCKER ASSY LEVEL AT POSITION WHERE SOLENOID STAIN LEVEL TRANSFER MUST BE IN OPERATING POSITION.
 2. TIGHTEN SCR (ITEM 74) TO 6 INCH-POUNDS OF TORQUE.
 3. TRIM LEADS OF ITEM # 3 LEADS TO 58 LONG BEFORE SOLID TO ITEM # 30.
 4. SEE DETAILS B-C-D TO LOCATE ITEM # 4 (CABLE TIES).
 5. CABLE WILL BE LACED SO AS NOT TO INHIBIT FREE MOTION OF LOCK-BAR # 27.
 6. ITEM # 53 TO BE USED RE: WHEN MOTOR SHAFT AND I.D. OF COUPLING APPLIED TO I.D. OF COUPLING AND 1/8" FROM MOTOR SHAFT. BE SURE LOCKED DIE NOT RUN DOWN MOTOR SHAFT TO WITH STAIN.



FIRST USED ON OPTION/MODEL	QTY	DESCRIPTION	PART NO	ITEM NO
TU60				
PARTS LIST				
UNLESS OTHERWISE SPECIFIED DIMENSION IN INCHES TOLERANCES	DRN	DATE	digital EQUIPMENT CORPORATION MILFORD MASSACHUSETTS	
DECIMALS	CHK'D	DATE	TITLE	
ANGLES	ENG	DATE	TRANSPORT	
REMOVE BURRS AND BREAK SHARP CORNERS SURFACE QUALITY	PROJ ENGR	DATE	ASSY (TU60)	
MATERIAL	PROD	DATE	NUMBER	
	NEXT HIGHER ASSY		7009014-0-0	
FINISH	D-JA-TU60-2-2	SCALE NONE	REV	
	SHEET 1 OF 2	DIST	F	

REV	CHG	NO	DATE	BY	DESCRIPTION
1					
2					
3					
4					
5					
6					
7					
8					

This drawing and specifications herein are the property of Digital Equipment Corporation and shall not be reproduced, copied or used in whole or in part as the basis for the manufacture or sale of any article without written permission.

Copyright © 1974 Digital Equipment Corporation

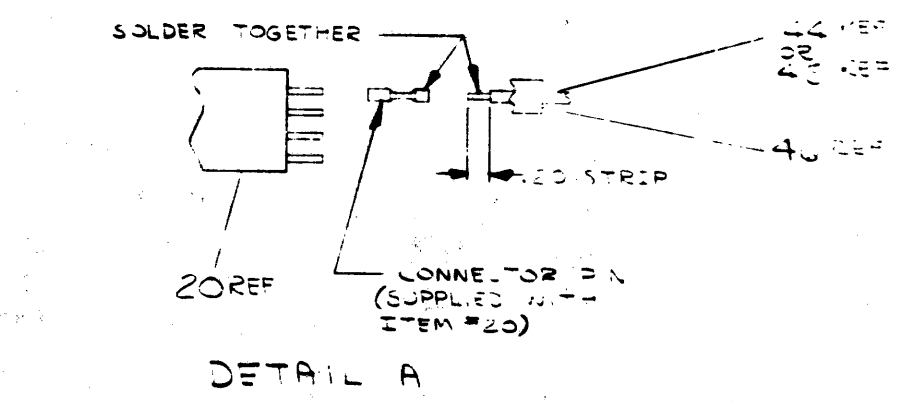
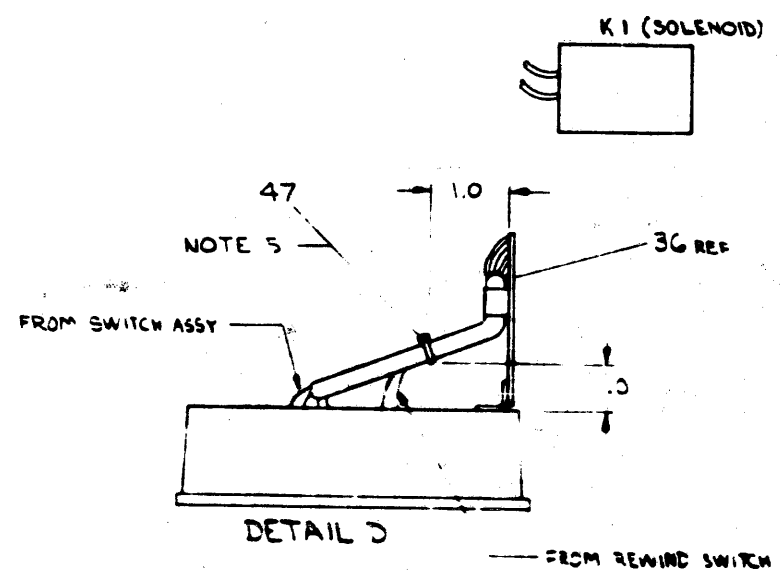
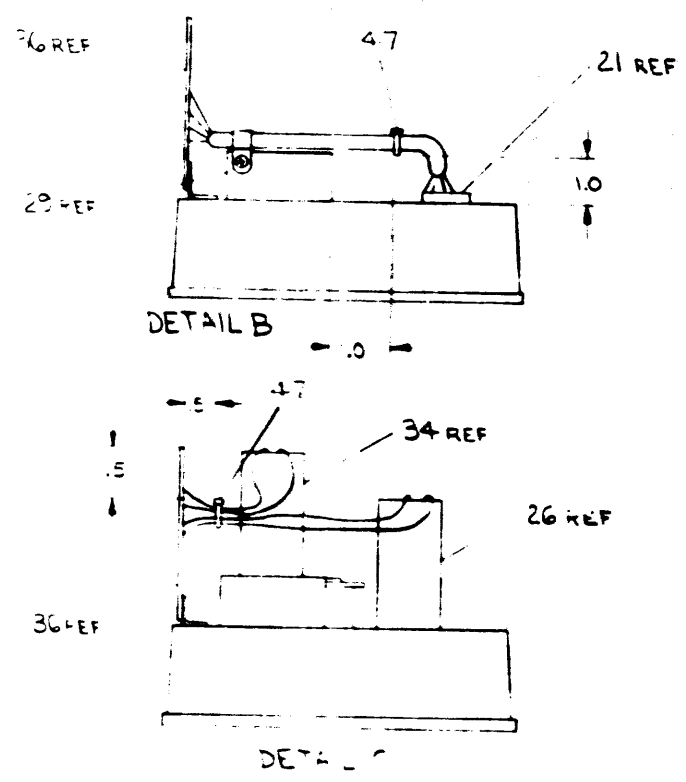
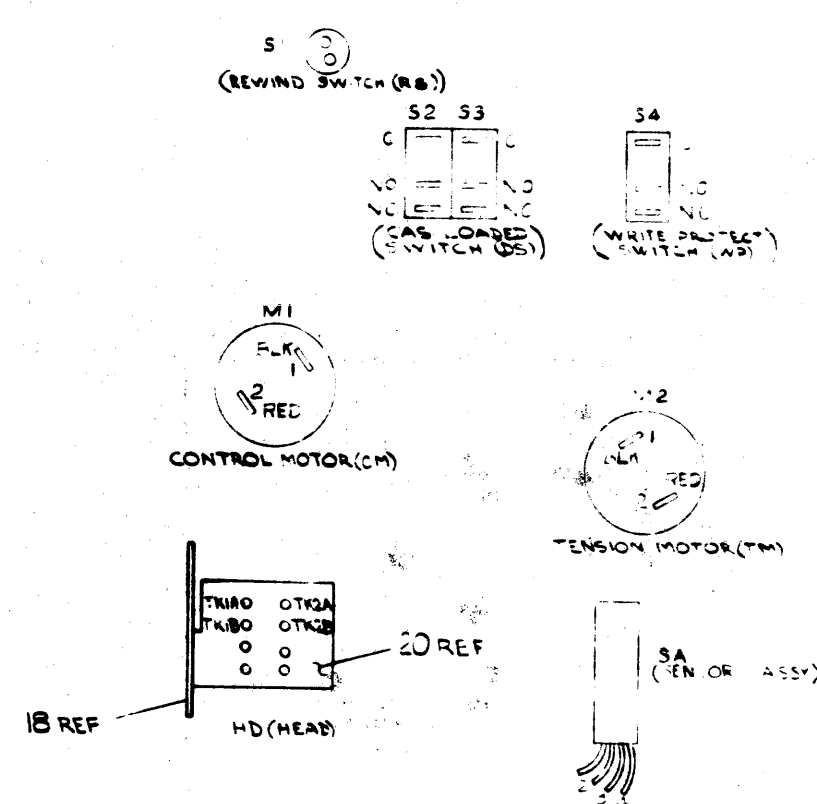
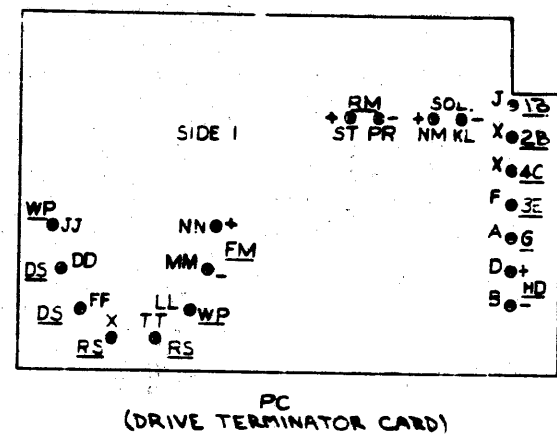
This drawing and specifications herein are the property of Digital Equipment Corporation and shall not be reproduced or used in whole or in part as the basis for the manufacture of any product without written permission.

COPYRIGHT © 1972 DIGITAL EQUIPMENT CORPORATION

700-014-C-0 F 2

WIRE TABLE

ITEM NO.	DESCRIPTION	FROM	TO	REMARKS	LENGTH
		CONN WITH	CONN WITH		
43	GRN	26	S1 SOLDER PC-X	SOLDER EITHER S1 TERM	3.5
43	GRN	26	S1 SOLDER PC-TT	REMAINING S1 TERM	3.5
45	WHT	26	HD-TK1A SOLDER PC-D	SEE DETAIL A	4.5
45	GRY	26	HD-TK2A SOLDER PC-B	SEE DETAIL A	4.5
			S2-C	PC-DD	
			S3-C	PC-EE	
			S4-C	PC-LL	
			S4-N1	PC-JJ	
	BLK	M1-1	PC-MM		5.0
	RED	M1-2	PC-MN		5.0
	BLK	M2-1	PC-NR		5.0
	RED	M2-2	PC-T		5.0
	WHT	K1	PC-MN	EITHER K1 LEAD	1.25
	WHT		PC-KL	REMAINING K1 LEAD	1.25
	BRN	A		EITHER BRN LEAD	
	BRN	JA-2		REMAINING BRN LEAD	
	BLK	JA-3			
	GRN	JA-4			
44	BRN	HD-TK1B SOLDER PC-X	HD-TK2B SOLDER PC-X	SEE DETAIL A	.75



REV	CHANGING	REVISIONS

FIRST USED ON OPTION/MODEL	QTY	DESCRIPTION	PART NO.	ITEM NO.
TU60				
PARTS LIST				
UNLESS OTHERWISE SPECIFIED DIMENSION IN INCHES	DRN	DATE	digital EQUIPMENT CORPORATION	
TOLERANCES	CHK'D	DATE	TITLE	
DECIMALS			TRANSPORT ASSY (TU60)	
ANGLES	ENG	DATE	SIZE CODE	NUMBER
REMOVE BURRS AND BREAK SHARP CORNERS SURFACE QUALITY	PROJ ENG	DATE	D-3	700014-C-0
	PROD	DATE	DIST	REV
				F
MATERIAL	NEXT HIGHER ASSY.			
FINISH	SCALE	SHEET		
	2 OF 2			

DIGITAL EQUIPMENT CORPORATION MAYNARD, MASSACHUSETTS			QUANTITY / VARIATION												
PARTS LIST			7009014-0	7009014-1											
MADE BY	W. MAJOR	CHECKED	W. MAJOR	SECTION											
DATE	11/27/72	DATE	11/16/73	1											
ENG	WY BENSON	PROD	[Signature]	ISSUED SECT.											
DATE	1-16-73	DATE	1/15/73	1											
ITEM NO.	DWG NO. / PART NO.	DESCRIPTION		7009014-0	7009014-1										
1	D-IA-7410640-0-0	BASE ASSY		1	0										
2	B-MD-7410518-0-0	BUTTON, REWIND SWITCH		1	0										
3	1211040	SWITCH, PUSHBUTTON SPST		1	1										
4	B-MD-7410519-0-0	BRACKET, REWIND SWITCH		1	0										
5	9006011-1	SCR, PHL HD PAN #4-40 X 3/8		2	2										
6	9008172	WASHER, FLAT #4 S.S.		2	2										
7	9006632	WASHER, INT TOOTH #4		10	10										
8	C-IA-7409930-0-0	EJECTOR ASSY		1	1										
9	9006013-1	SCR, PHL HD PAN #4-40 X 1/2		3	3										
10		LOCTITE 242		A	R/A/R										
11	D-AD-7009146-0-0	SPINDLE ASSEMBLY		1	1										
12	9009275-2	SCR, PHL HD PAN #4-40 X 3/8		3	3										
13	9009308	SPRING		2	2										
14	9006527	ROLL PIN 3/32 X 11/16 LG		2	2										
15	9006531	ROLL PIN 1/8 X 3/8 LG		2	2										
16	C-IA-7409924-0-0	COVER, LOWER CASSETTE ASSY		1	0										
17	9006001-1	SCR, PHL HD PAN #2-56 X 1/4		3	3										
18	C-MD-7409908-0-0	PLATE, HEAD MOUNT		1	1										
19	9009276	SCR, PHL HD PAN #2-56 X 1/8		1	1										
20	1211174	HEAD		1	1										
21	D-PS-1211289-0-0	SENSOR ASSEMBLY		1	1										
22	C-MD-7409912-0-0	GUIDE, TAPE		4	0										
TITLE			ASSY NO.	SIZE CODE	NUMBER	REV	ECO NO.								
TRANSPORT ASSY (TU60)			D-AD-7009014-0-0	A PL	7009014-0-0	F	7009014-00002								
			SHEET 1 OF 3	DIST.											

DEC FORM DEC 16 (325) 1031 NR70
DRA 110

DIGITAL EQUIPMENT CORPORATION MAYNARD, MASSACHUSETTS			QUANTITY / VARIATION												
PARTS LIST			7009014-0	7009014-1											
MADE BY	W. MAJOR	CHECKED	W. MAJOR	SECTION											
DATE	11/27/72	DATE	11/16/73	1											
ENG	WY BENSON	PROD	[Signature]	ISSUED SECT.											
DATE	1-16-73	DATE	1/15/73	1											
ITEM NO.	DWG NO. / PART NO.	DESCRIPTION		7009014-0	7009014-1										
45	9107678-98	WIRE, #26 AWG TEF INS WHT/GRY		A/R	A/R										
46	9107755	TUBING, SHRINKABLE 3/64 DIA		A/R	A/R										
47	9007031	TIE, CABLE 3 3/4 LG X 3/32 WIDE		A/R	A/R										
48	9009280	NUT, HEX #4-40 X 3/16 X 1/16		1	1										
49	9009504-2	SCR, PHL FLAT HD #4-40 X 5/8		2	2										
50	1000012	CAPACITOR 1000 PF 5%		2											
51	9006010-1	SCR, PHL PAN HD #4-40 X 5/16		4	4										
52	9006517	ROLL PIN 1/8 X 1/4 LG		2	2										
53		LOCTITE IS-150		A/R	A/R										
54		TORQUE SEAL		A/R	A/R										
55	9006631	WASHER, INT TOOTH #2		1	1										
56	D-IA-7410640-1-0	BASE ASSY		0	1										
57	C-IA-7409924-1-0	COVER, LOWER CASSETTE ASSY		0	1										
58	D-MD-7410725-1-0	LOCK BAR, CASSETTE		0	1										
59	C-MD-7409912-1-0	GUIDE, TAPE		0	4										
60	B-MD-7410518-1-0	BUTTON, REWIND SWITCH		0	1										
61	B-MD-7411496-0-0	BRACKET, SWITCH SPRING		0	1										
62	9006633	WASHER, INT TOOTH #6		2	2										
63	9006025-1	SCR, PHL HD PAN #6-32 X 5/8		2	2										
TITLE			ASSY NO.	SIZE CODE	NUMBER	REV	ECO NO.								
TRANSPORT ASSY (TU60)			D-AD-7009014-0-0	A PL	7009014-0-0	F									
			SHEET 3 OF 3	DIST.											

DEC FORM DEC 16 (325) 1031 NR70
DRA 110

DIGITAL EQUIPMENT CORPORATION MAYNARD, MASSACHUSETTS			QUANTITY / VARIATION												
PARTS LIST			7009014-0	7009014-1											
MADE BY	W. MAJOR	CHECKED	W. MAJOR	SECTION											
DATE	11/27/72	DATE	11/16/73	1											
ENG	WY BENSON	PROD	[Signature]	ISSUED SECT.											
DATE	1-16-73	DATE	1/15/73	1											
ITEM NO.	DWG NO. / PART NO.	DESCRIPTION		7009014-0	7009014-1										
23	C-MD-7409911-0-0	SPACER, TAPE GUIDE		2	2										
24	9006015-1	SCR, PHL HD PAN #4-40 X 3/4		2	2										
25	D-PS-1211279-0-0	COUPLING, CASSETTE DRIVE		1	1										
26	1211111	MOTOR, CASSETTE		1	1										
27	D-MD-7409917-0-0	LOCK BAR, CASSETTE		1	0										
28	9009277-1	SCR, SLOTTED HD PAN #8-32 X 1/4		1	1										
29	C-MD-7409928-0-0	BRACKET, SOLENOID		1	1										
30	9008301-1	SCR, PHL HD PAN #4-40 X 1/4		5	5										
31	9007079	CLAMP, CABLE 5/16		3	3										
32	1211189	SOLENOID		1	1										
33	B-MD-7409929-0-0	BRACKET, TERMINAL BOARD		1	1										
34	C-AD-7009140-0-0	MOTOR MOUNT ASSY		1	1										
35	9009279	SPRING		1	1										
36	D-IA-7009041-0-0	TERMINATOR CABLE ASSY		1	1										
37	C-MD-7410537-0-0	SPRING, LOCK BAR		1	1										
38	C-AD-7009141-0-0	SWITCH ASSY		1	1										
39	B-MD-7410544-0-0	SPACER, E.O.T. BLOCK		1	0										
40	C-AD-7009148-0-0	LEVER ASSY		1	1										
41	9006791	SPACER, AL HEX #4 1/8 LG		2	0										
42	9009274	SCREW, SET #2-56 X 1/8 LG		1	1										
43	9107636-33	WIRE, #26 AWG IPVC STRD ORN		A/R	A/R										
44	9107636-11	WIRE, #26 AWG IPVC STRD BRN		A/R	A/R										
TITLE			ASSY NO.	SIZE CODE	NUMBER	REV	ECO NO.								
TRANSPORT ASSY (TU60)			D-AD-7009014-0-0	A PL	7009014-0-0	F									
			SHEET 2 OF 3	DIST.											

DEC FORM DEC 16 (325) 1031 NR70
DRA 110

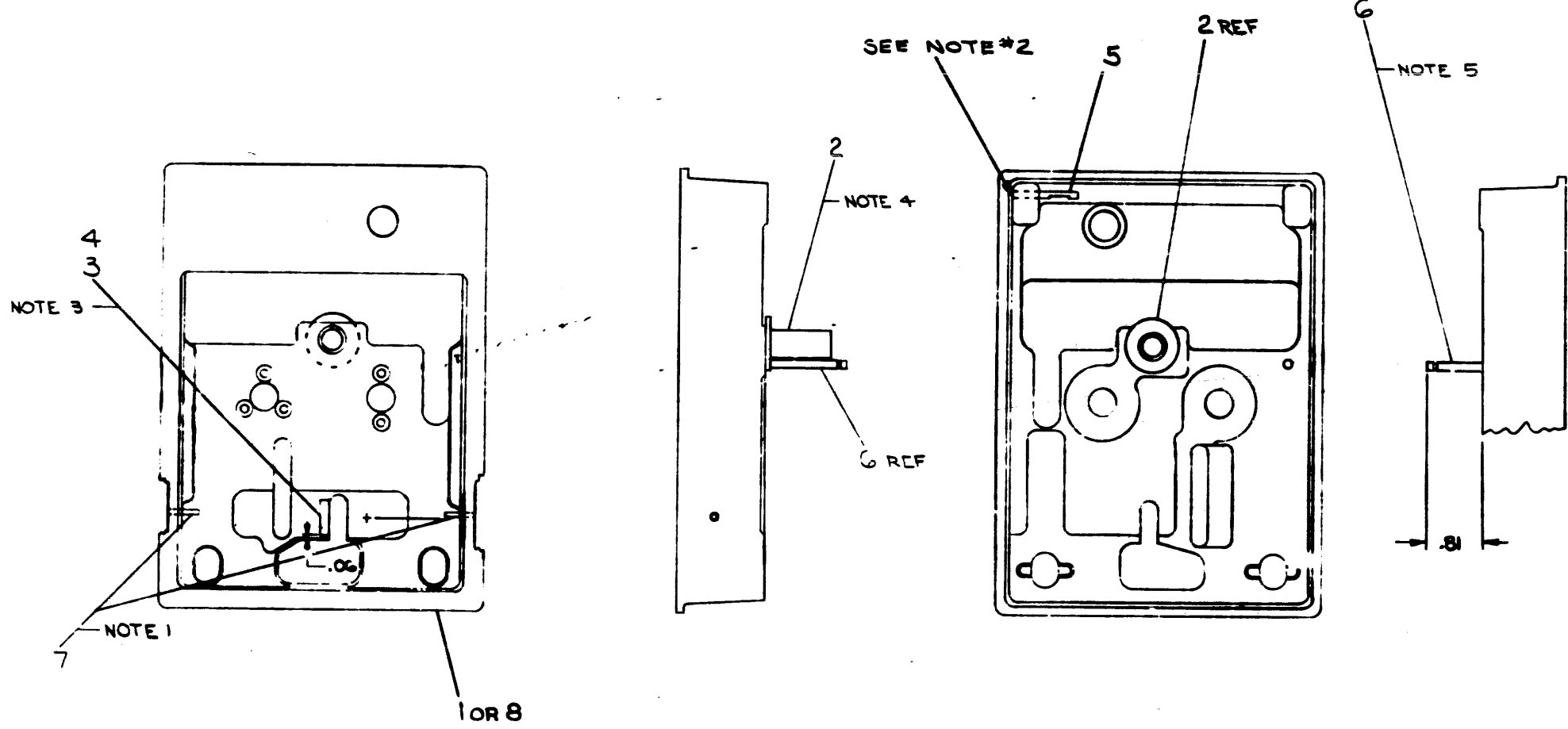
This drawing and specifications herein are the property of Digital Equipment Corporation and shall not be reproduced or copied or used in whole or in part as the basis for the manufacture or sale of items without written permission.

8 0-0-0-0040-0-0 2

LEGEND	
NUMBER	VARIATION
7410640-0	SAND CAST
7410640-1	DIE CAST

- NOTES:
1. ROLL PIN (ITEM#7) TO BE PRESSED FLUSH WITH OUTSIDE SURFACE OF BASE AS SHOWN, 2 PLACES.
 2. PIN (ITEM#5) TO BE PRESSED FLUSH WITH THIS SURFACE AS SHOWN. NOTE POSITION OF CUTOUT ON ITEM#5.
 3. WHEN MOUNTING SHIM (ITEM#3) TO BASE (ITEM#1), USE LOCTITE IS-06 (ITEM#4) SPARINGLY TO AVOID BUILDUP BUT ENOUGH TO OBTAIN A GOOD BOND. NOTE LOCATION OF SLOT IN BASE.
 4. BUSHING (#2) TO BE PRESSED INTO ITEM#1 AS SHOWN.
 5. PIN (#6) TO BE PRESSED INTO ITEM#1 TO DIMENSION SHOWN.

D
C
B
A



QTY.	DESCRIPTION	PART NO.	ITEM NO.	
1	0	BASE, CASSETTE TRANS (MACH)	E-MD-74 0723-1-0	8
0	2	ROLL PIN	9006531	7
1	1	PIN, SPRING, MOTOR PINS	C-MD-40 434-0-0	6
0	1	PIN, ANCHOR	C-MD-7416339-0-0	5
A/R	M/R	LOCTITE IS-06		4
1	1	SHIM, SKEW	B-MD-74-2553-0-0	3
1	1	BUSHING, ROCKER	B-MD-7409938-0-0	2
0	1	BASE, CASSETTE TRANS (MACH)	E-MD-7406350-0-0	1

FORM 40-107 (REV. 10-6-64)		TUGO	
UN: 1 OTHERWISE SPECIFIED TOLERANCES	DATE: 7-15-72	EQUIPMENT CORPORATION	
SCALE: 1/1	SCALE: 1/1	TITLE: BASE ASSY	
MATERIAL: + +	SCALE: 1/1	NUMBER: DIA 7410640-0-0	
FINISH: + +	SCALE: 1/1	REV: B	

REV	CHANGE NO	DATE	BY	CHKD
A	TUGO-00012	9-7-73	MLEIS	
B	TUGO-00013	2/10/74	H. DRAB	

7410640-0-0

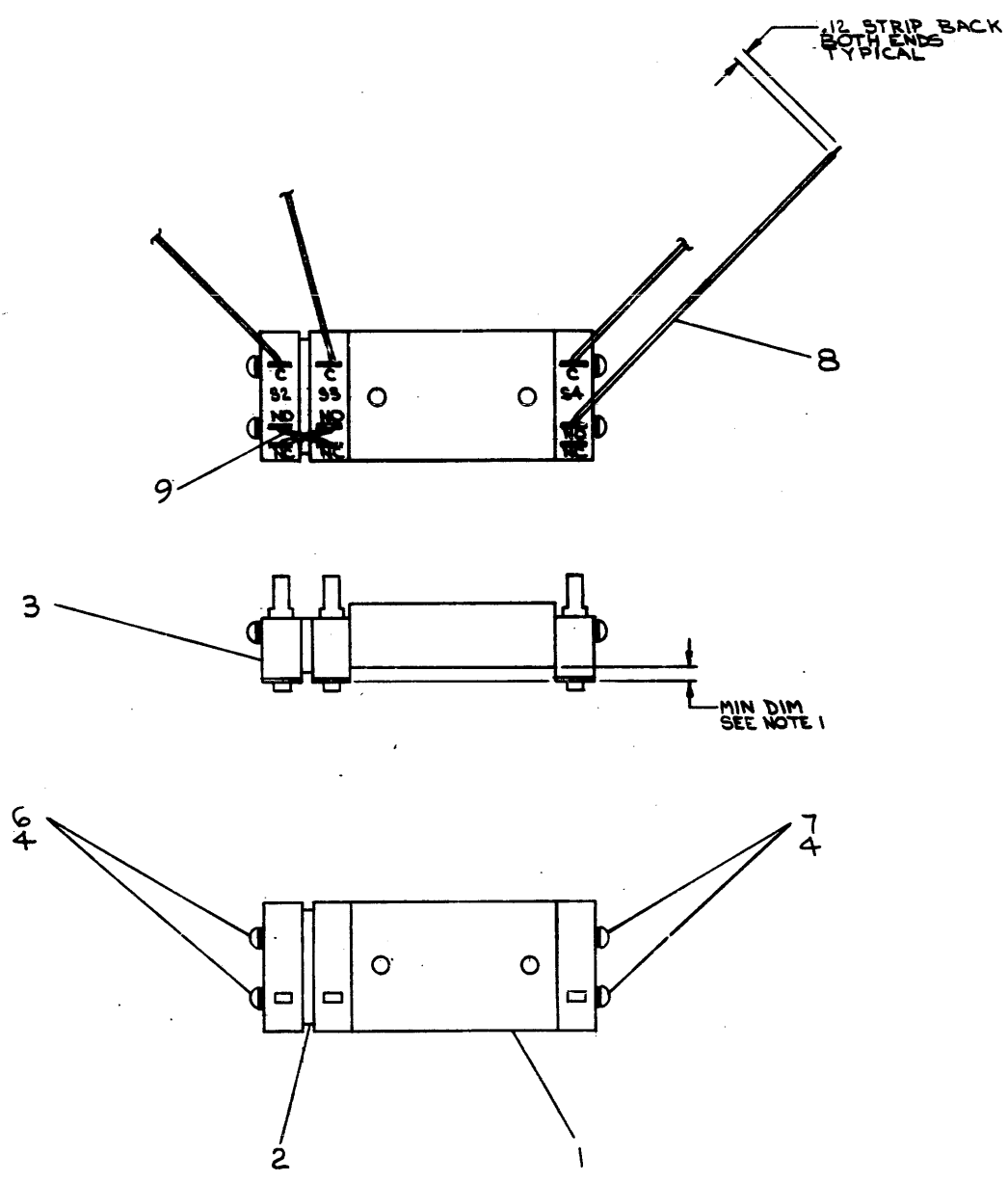
8 7 6 5 4 3 2 1

8 7 6 5 4 3 2 1
 This drawing and specifications herein are the property of Digital Equipment Corporation and shall not be reproduced or copied or used in whole or in part as the basis for the manufacture or sale of items without written permission.
 COPYRIGHT © 1972, DIGITAL EQUIPMENT CORPORATION

WIRE TABLE

ITEM NO.	DESCRIPTION	FROM		TO		LENGTH
		CONN	WITH	CONN	WITH	
8	BRN 26	S2-C	SOLDER	S3-NC	SOLDER	5"
9	BUSS 22	S2-NO	SOLDER	S3-NC	SOLDER	.75"
9	BUSS 22	S2-NC	SOLDER	S3-NO	SOLDER	.75"
8	BRN 26	S3-C	SOLDER	S4-NC	SOLDER	5"
8	BRN 26	S4-C	SOLDER	S4-NC	SOLDER	6"
8	BRN 26	S4-NO	SOLDER	S4-NC	SOLDER	4.5"

NOTES:
 1. SWITCHES MUST BE ADJUSTED AT ASSY TO OBTAIN MINIMUM DIMENSION FROM BOTTOM SURFACE OF SWITCHES TO BOTTOM SURFACE OF SWITCH BLOCK.



A/R	DESCRIPTION	PART NO.	QTY.
A/R	WIRE, BUSS, #22 AWG	9107560-01	9
A/R	WIRE #26 AWG, IFVC, STRD	9107636-11	8
2	SCR, PHL HD PAN 2-56 X 1/2 SST	9006005-1	7
2	SCR, PHL HD PAN 2-56 X 3/4 SST	9006006-1	6
4	WASHER, 250 X 0.94 X 0.20 T W	9006031	4
4	WASHER, INT TOOTH #2 SST	9006031	4
3	SWITCH, MICRO	1209782	3
1	SPACER, MICRO SWITCH	6MD7409935-00	2
1	BLOCK, SWITCH	6MD7409926-00	1

FIRST USED ON OPTION/MODEL TU60	QTY.	DESCRIPTION	PART NO.	ITEM NO.
PARTS LIST				
UNLESS OTHERWISE SPECIFIED DIMENSION IN INCHES TOLERANCES	DATE 11/2/72	digital EQUIPMENT CORPORATION MAYFARDE MASSACHUSETTS		
DECIMALS .XXX ± .008 .XX ± .02 .X ± .1	ANGLES 20° 30'	DATE 11/2/72	TITLE SWITCH ASSY	
REMOVE BURRS AND BREAK SHARP CORNERS SURFACE QUALITY	DATE 11/15/72	REV. A		
MATERIAL	NEXT HIGHER ASSY.	SCALE 2/1	SIZE CODE D-AD-7009141-0-0	NUMBER 7009141-0-0
FINISH	SHEET 1 OF 1	DIST. 1		

REVISIONS

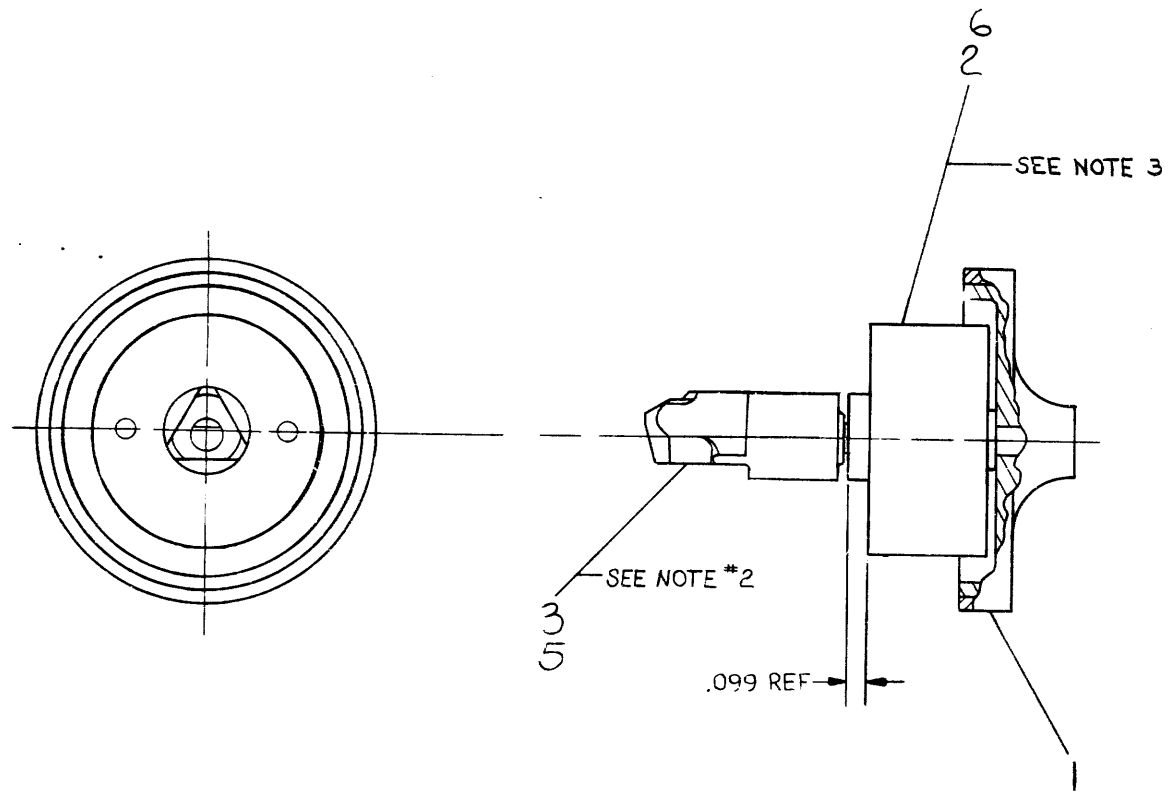
CHK	CHANGE NO	REV.
	TU60-00012	A
	9-7-73	
	9-14-73	

M. LEIS

REV. A
 NUMBER D-AD-7009141-0-0

This drawing and specifications, herein, are the property of Digital Equipment Corporation and shall not be reproduced or copied or used in whole or in part as the basis for the manufacture or sale of items without written permission.
1972

- NOTES:
- ITEM #3 TO BUTT AGAINST SHOULDER OF SPINDLE.
 - LOCTITE TO BE USED BETWEEN SPINDLE SHAFT AND I.D. OF COUPLING. APPLY LOCTITE TO I.D. OF COUPLING AND SLIP ON SPINDLE SHAFT. BE SURE LOCTITE DOES NOT RUN DOWN TO BEARING.
 - APPLY DOW CORNING *99-2 GREASE BETWEEN SPINDLE SHAFT & I.D. OF BEARING. APPLY SPARINGLY.



QTY.	DESCRIPTION	PART NO.	ITEM NO.
6	GREASE, DOW CORNING *99-2		
5	LOCTITE IS 150		
1	SCREW, SET, #2-56	9009274	4
1	COUPLING, CASSETTE DRIVE	D-PS-1211279-0-0	3
1	BEARING	C-MD-7410692-0-0	2
1	PULLEY, DRIVE ASSY	C-IA-7409914-0-0	1

REV.	CHANGE NO.	DATE	BY	CHK'D.
A	TU60-00004	12/12/72	W. BENSON	
B	TU60-00008	10/9/72	V. DEMPSEY	
C	TU60-00013	3-27-73	H. DRAB	

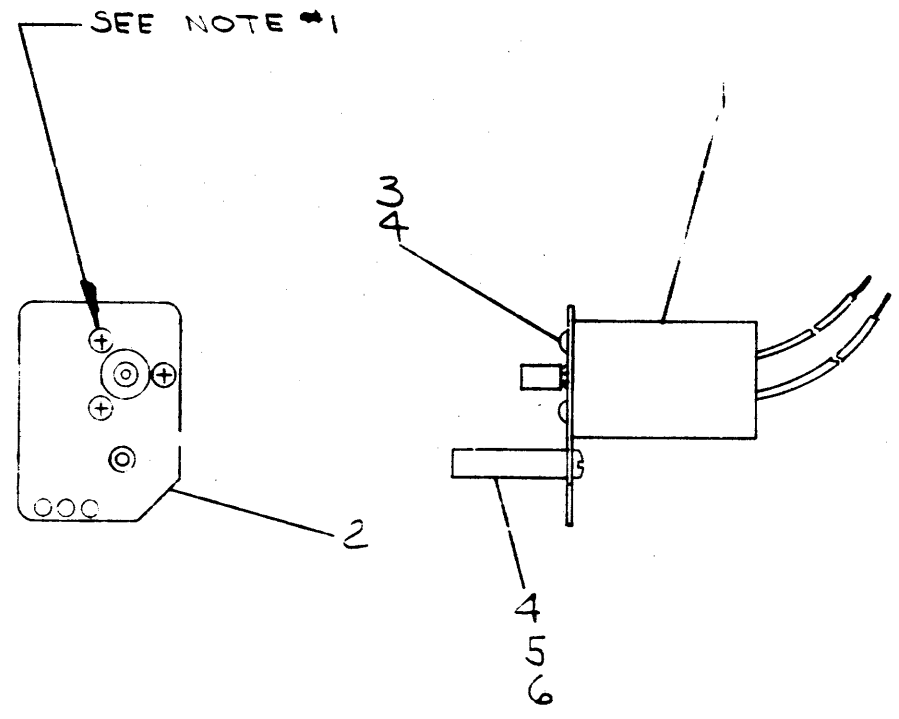
FIRST USED ON OPTION/MODEL TU60		PARTS LIST	
UNLESS OTHERWISE SPECIFIED DIMENSION IN INCHES. TOLERANCES	DECIMALS	ANGLES	DATE
.XXX = .005 .XX = .02 .X = .1		±0° 30'	9/11/72
REMOVE BURRS AND BREAK SHARP CORNERS SURFACE QUALITY			10/25/72
MATERIAL	SS		DATE
FINISH	SS		19/2/72
			DATE
			19/2-72
			DATE
			6/2/72
NEXT HIGHER ASSY.		TITLE	
D-AD-7009014-0-0		SPINDLE ASSY	
SCALE	2/1	SIZE CODE	NUMBER
SHEET	1 OF 1	C AD	7009146-0-0
		REV.	C

BRUNING 40-107 15968

REV. C
NUMBER C AD 7009146-0-0
SIZE CODE C

This drawing and specifications herein are the property of Digital Equipment Corporation and shall not be reproduced or copied or used in whole or in part as the basis for the manufacture or sale of items without written permission.

NOTES:
 1. LOCTITE (#4) TO BE APPLIED TO THREADS OF ITEMS #3 & #5.



QTY	DESCRIPTION	PART NO.	ITEM NO.
1	PIVOT, MOTOR	GMD-7409915-0-0	6
1	SCR, SLOT HD PAN	9009277	5
A/R	LOCTITE 242		4
3	SCR, PHL PAN HD 4-40-1/4	9008301-1	3
1	MOUNT, MOTOR	GMD-7409910-0-0	2
1	DRIVE MOTOR ASSY	GIA-7009139-0-0	1

FIRST USED ON OPTION/MODEL	QTY	DESCRIPTION	PART NO.	ITEM NO.
TUBØ				
PARTS LIST				
UNLESS OTHERWISE SPECIFIED DIMENSION IN INCHES TOLERANCES		DRN <i>[Signature]</i>	DATE 2-2-72	digital EQUIPMENT CORPORATION MAYNARD, MASSACHUSETTS TITLE MOTOR MOUNT ASSY
DECIMALS	ANGLES	CHK'D <i>[Signature]</i>	DATE 11/1/72	
XXX - .006	± 0' 30'	ENG <i>[Signature]</i>	DATE 11/1/72	
XX - .02		PROJ ENG <i>[Signature]</i>	DATE 11/6/72	
X - .1			DATE 11/1/72	
REMOVE BURRS AND BREAK SHARP CORNERS SURFACE QUALITY		NEXT HIGHER ASSY		
MATERIAL	D-AD-7009014-0-0		SIZE CODE	NUMBER
FINISH	SCALE 1/1		C AD	7009140-0-0
	SHEET	OF	DIST.	3

BRUNING 40 107 15968

REV.	CHANGE NO.	REV.
A	1160-00012	A
	9773	
	MLFIS	

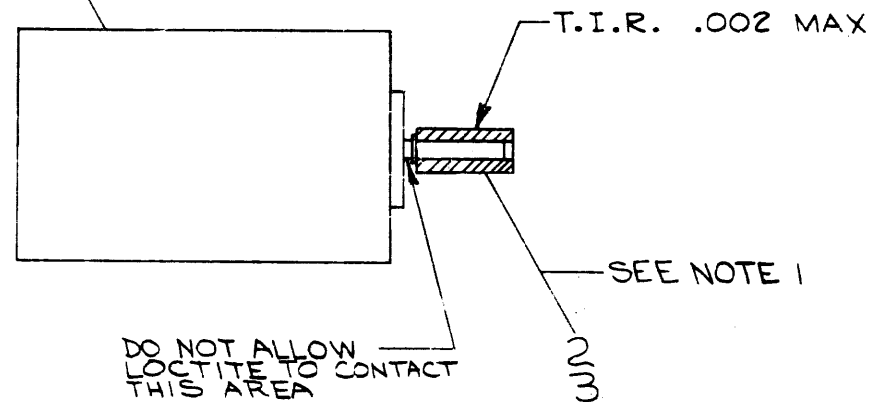
DEC FORM NO. DRC 100-A

REV. A
 NUMBER 7009140-0-0
 SIZE CODE C AD

This drawing and specifications, herein, are the property of Digital Equipment Corporation and shall not be reproduced or copied or used in whole or in part as the basis for the manufacture or sale of items without written permission.

NOTES:

1. SLEEVE (#2) TO BE PRESSED ON MOTOR SHAFT TO "E" RING. LOCTITE TO BE APPLIED SPARINGLY TO INSIDE OF SLEEVE BEFORE ASSEMBLY.



D
C
B
A

D
C
B
A

BRUNING 40-107 15966	REVISIONS	REV. A
CHK	CHANGE NO. TUGO-00012	A
	MILETS	

DEC FORM NO. DRC 100-1

A/R	LOCTITE IS-150		3
1	SLEEVE, MOTOR	C-MD-7409913-0-0	2
1	MOTOR	1211111	1

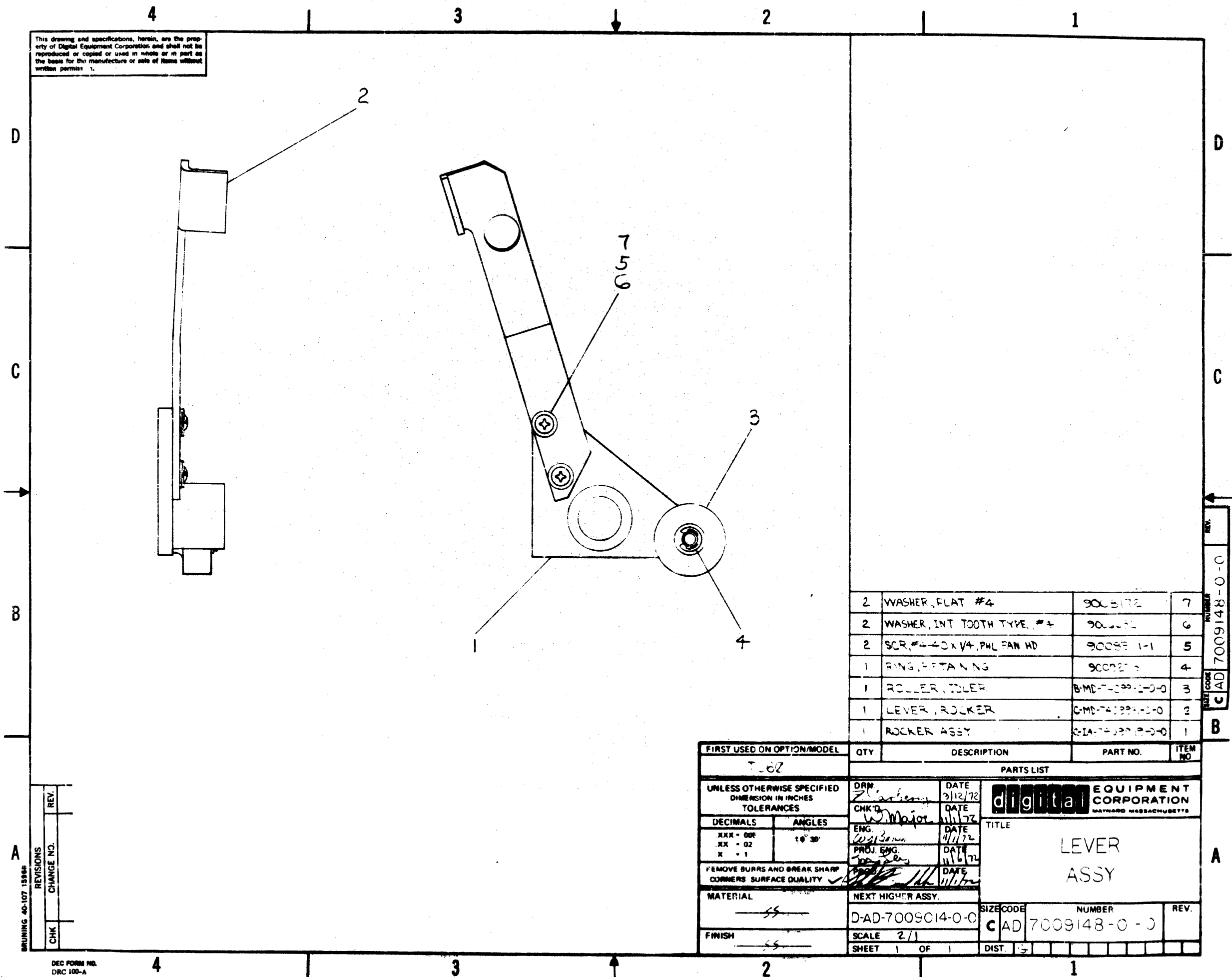
FIRST USED ON OPTION/MODEL	QTY.	DESCRIPTION	PART NO.	ITEM NO.
TUGO				
PARTS LIST				
UNLESS OTHERWISE SPECIFIED DIMENSION IN INCHES TOLERANCES	DRN. <i>F. Collins</i>	DATE 10-5-72	digital EQUIPMENT CORPORATION MAYNARD MASSACHUSETTS	
DECIMALS	CHK'D. <i>W. H. ...</i>	DATE 10-25-72	TITLE	
ANGLES	ENG. <i>W. H. ...</i>	DATE 10/25/72	DRIVE-MOTOR ASSY	
xxx - .006 xx - .02 x - .1	PROJ. ENG. <i>W. H. ...</i>	DATE 10/25/72		
REMOVE BURRS AND BREAK SHARP CORNERS SURFACE QUALITY	<i>W. H. ...</i>	DATE 10/25/72		
MATERIAL	NEXT HIGHER ASSY.		SIZE CODE	NUMBER
			C IA	7009139 0-0
FINISH	SCALE 2/1			REV. A
	SHEET 1 OF 1		DIST. C	

REV. A
NUMBER 7009139-0-0
SIZE CODE C IA

4 3 2 1

4 3 2 1

This drawing and specifications, herein, are the property of Digital Equipment Corporation and shall not be reproduced or copied or used in whole or in part as the basis for the manufacture or sale of items without written permits.



QTY	DESCRIPTION	PART NO.	ITEM NO.
2	WASHER, FLAT #4	9005172	7
2	WASHER, INT TOOTH TYPE #4	9005171	6
2	SCR, #4-40 x 1/4, PHL PAN HD	900581-1	5
1	RNG, 4 FTAN NG	900225	4
1	ROLLER, IDLER	B-MD-74399-0-0	3
1	LEVER, ROCKER	C-MD-74399-0-0	2
1	ROCKER ASSY	D-AD-7009014-0-0	1

FIRST USED ON OPTION/MODEL T-6Z		QTY	DESCRIPTION	PART NO.	ITEM NO.
PARTS LIST					
UNLESS OTHERWISE SPECIFIED DIMENSION IN INCHES TOLERANCES		DRN <i>Z. Arlene</i>	DATE 3/12/72	digital EQUIPMENT CORPORATION MAYNARD, MASSACHUSETTS	
DECIMALS ANGLES		CHK'D <i>W. Major</i>	DATE 11/1/72		
XXX - 00F .XX - 02 X - 1		ENG <i>W. J. Sullivan</i>	DATE 4/11/72	TITLE LEVER ASSY	
REMOVE BURRS AND BREAK SHARP CORNERS SURFACE QUALITY		PROJ. ENG <i>W. J. Sullivan</i>	DATE 11/6/72		
MATERIAL —SS—		NEXT HIGHER ASSY. D-AD-7009014-0-0		SIZE CODE CAD	NUMBER 7009148-0-0
FINISH —SS—		SCALE 2/1		REV.	
		SHEET 1 OF 1		DIST.	

BRUNING 40-107 1988	REV.	
	CHANGE NO.	
	CHK	