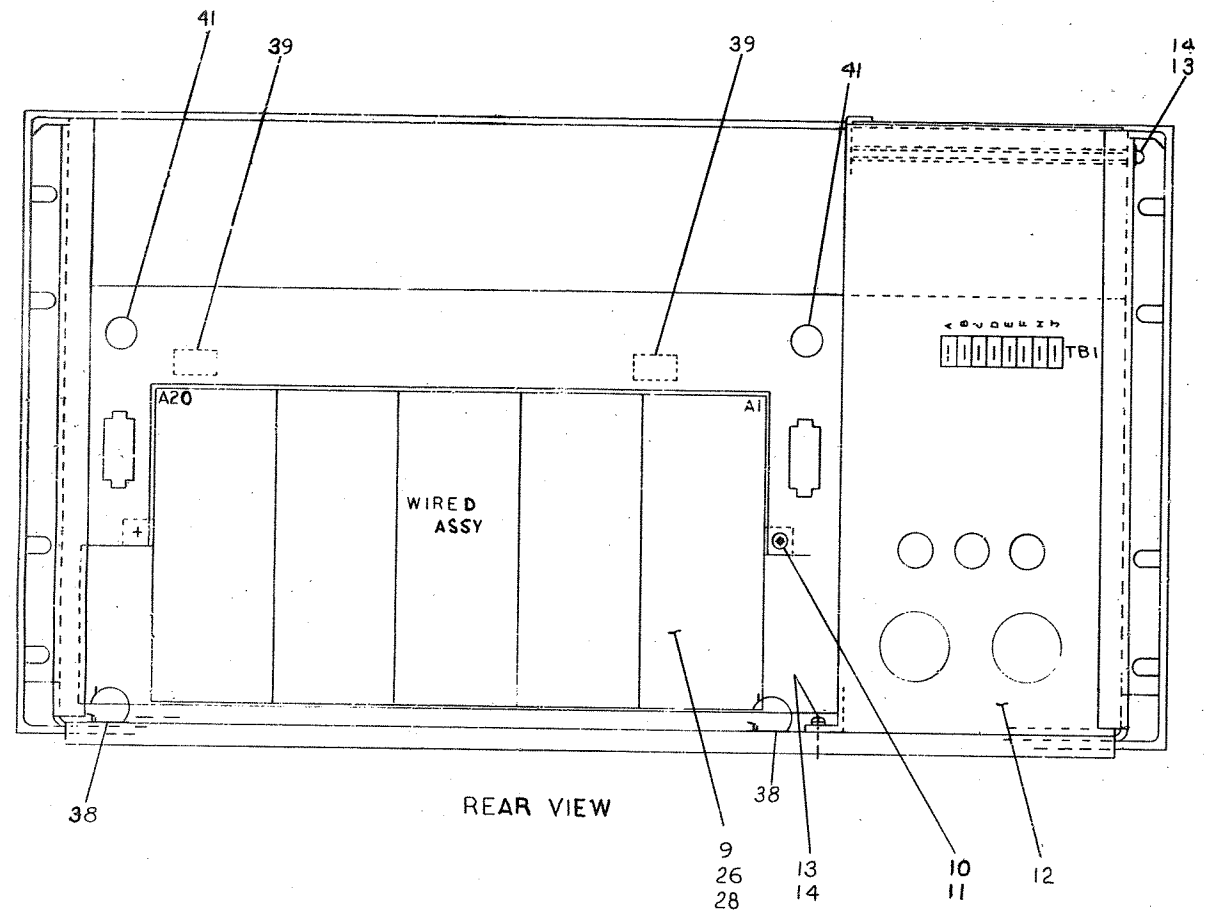


**TU56  
DECtape transport  
engineering drawings**

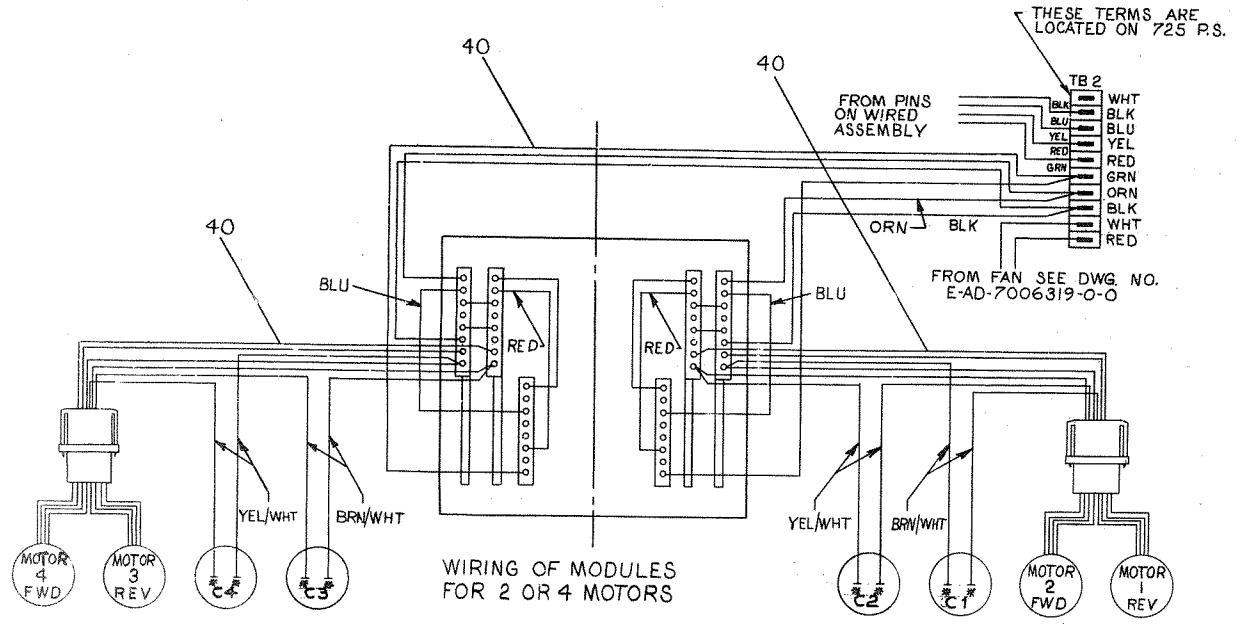
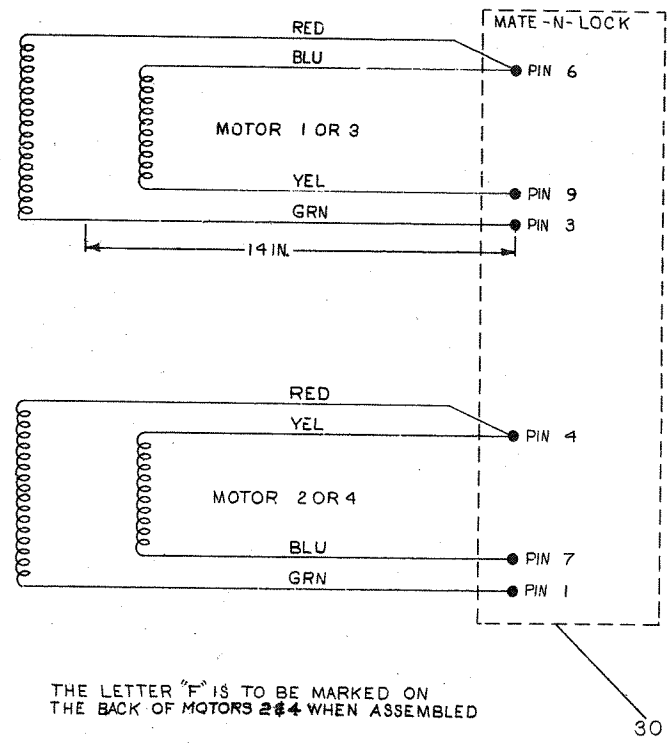




1. MOTORS SUPPLIED WITH WIRES PART NO. 33 TO BE CRIMPED ON WIRE AND INSERTED INTO PART NO. 30 AT ASSEMBLY.  
 2. \*ASTERISK INDICATES WIRES TO BE SOLDERED IN PLACE AT POINT INDICATED  
 3. ITEM NO. 2 JO. SHOWN USE WHERE REQ'D.  
~~4. SCREWS - HOLD ITEM 13, SHIPPING BRACKET WHEN BRACKET IS REMOVED AFTER SHIPMENT, REPLACE SCREWS.~~  
 4. PACKAGING INSTRUCTION 3700022 FOR CUSTOMER SHIPMENTS AND 3700063 FOR INTERPLANT SHIPMENTS.



MOTOR WIRING DIAGRAM



QTY.	DESCRIPTION	PART NO.	ITEM NO.
	PARTS LIST		
	DRAWN: GULICK	DATE: 12-7-69	digital EQUIPMENT CORPORATION MILFORD, MASSACHUSETTS
	CHECKED: HEALY	DATE: 12/15/69	
	DESIGNED: VAILLANT	DATE: 8/25/69	
	PROJ. ENGR: LUITIG	DATE: 8/25/69	
	PROD. ENGR: TOMPKINS	DATE: 8-25-69	
TITLE: TU56 ASSEMBLY		REVISION: NONE	REV. T
FIRST USED ON: EJA TU56-0-0		DATE: 12-7-69	
SCALE: NONE			
SHEET: 2 of 2			

**DIGITAL EQUIPMENT CORPORATION**  
MAYNARD, MASSACHUSETTS  
**PARTS LIST**

MADE BY KEN GULICK  
DATE 8/6/69  
ENG C. VALLIANT  
DATE 8/26/69

CHECKED D. HEALEY  
DATE 8/18/69  
PROD C. TOMPKINS  
DATE 8/26/69

SECTION 1  
ISSUED SECT. 1

ITEM NO.	DWG NO. / PART NO.	DESCRIPTION
1	E-AD-7006320-1-0	PANEL FRONT ASSEMBLY
2	E-AD-7006320-2-0	PANEL FRONT ASSEMBLY
3	E-AD-7006319-1-0	CHASSIS ASSEMBLY
4	E-AD-7006319-2-0	CHASSIS ASSEMBLY
5	9006070-1	SCR PAN 10-32 x 3/8 LG SST
6	1209600	LID SUPPORT #43067 CHANDLER & FARQUHAR
7	9008135	WASH CURVED #U250-0075 ASSOC SPR
8	9008146	WASH FLAT .630.D.X.23I.D.X.048 THK SST
9	D-AD-7006321-0-0	WIRED ASSY TU56
10	9006075-1	SCR PHL HD PAN #10-32 X 3/4 IG SST
11	9006565	NUT KEPS #10-32
12	D-UA-725-0-0	POWER SUPPLY 725 +
13	9006021-1	SCR PHL HD PAN 6-32 X 5/16 LG SST
14	9007651	WASH EXT TOOTH #6 HOLES
15	9007917	CONN SOLDERLESS #50902 ARKLESS
16	9007193	CONN SOLDERLESS #3000541B
17	<del>9107360-55</del>	<del>WIRE #18 AWG STRD TEFLON INS (GRN)</del>
18	<del>9107360-33</del>	<del>WIRE #18 AWG STRD TEFLON INS (ORN)</del>
19	<del>9107360-48</del>	<del>WIRE #18 AWG STRD TEFLON INS (RED)</del>
20	9107360-00	WIRE #18 AWG STRD TEFLON INS (BLK)
21	9107360-66	WIRE #18 AWG STRD TEFLON INS (BLD)
22	9107360-22	WIRE #18 AWG STRD TEFLON INS (RED)

TITLE TU56 ASSEMBLY  
ASSY NO. E-UA-TU56-0-0  
SIZE CODE A PL  
SHEET 1 OF 3  
DISTRIBUTION TU56-0-0

		QUANTITY / VARIATION								
		TU56-H	TU56-M	TU56-MR	TU56-HC	TU56-C	TU56-MD	TU56-MC	TU56-MH	TU56-MJ
1		1	-	-	1		1			
-		-	1	1		1		1		
1		1	-	-	1		1			
-		-	1	1		1		1		
4		4	4	4	4	4	4	4	4	4
2		2	2	2	2	2	2	2	2	2
2		2	2	2	2	2	2	2	2	2
4		4	4	4	4	4	4	4	4	4
1		1	1	1	1	1	1	1	1	1
2		2	2	2	2	2	2	2	2	2
6		6	2	2	6	2	6	2	6	6
1		1	1	1	1	1	1	1	1	1
5		5	5	5	5	5	5	5	5	5
3		3	3	3	3	3	3	3	3	3
32		32	64	64	32	64	32	64	32	32
3		3	6	6	3	6	3	6	3	3

**DIGITAL EQUIPMENT CORPORATION**  
MAYNARD, MASSACHUSETTS  
**PARTS LIST**

MADE BY KEN GULICK  
DATE 8/6/71  
ENG C. VALLIANT  
DATE 8/26/69

CHECKED D. HEALEY  
DATE 8/19/71  
PROD E.R. TOMPKINS  
DATE 8/26/69

SECTION 1  
ISSUED SECT. 1

ITEM NO.	DWG NO. / PART NO.	DESCRIPTION
23	9007430-56	WIRE #18 AWG STRD TEFLON INS (GRN)
24	9007091	WIRE #18 AWG STRD TEFLON INS (ORN)
25	D-IA-7407534-0-0	COVER PLATE - HALF
26	C-IA-7405152-1-0	INFO CABLE
27	<del>D-IA-7006223-0-0</del>	<del>INTERCONNECTION CABLE</del>
28	D-UA-BC02X-3-0	CABLE RIBBON M908-M908
29	7006697	TU56 MOTOR CONNECTOR CABLE
30	1209351-09	MATE-N-LOCK SOCKET HOUSING (9 PIN)
31	7006695	TU56 CARD CONNECTOR CABLE (R)
*	D-IA-7006412-0-0	OPTION CABLE TU56
32	7006696	TU56 CARD CONNECTOR CABLE (L)
33	1209378	PIN, CONNECTOR
34	** C-IA-7408007-0-0	BRACKET, RT, ANGLE SUPPORT
35	** E-IA-7408009-0-0	SPACER, MTG BRACKET
36	** C-MD-7408322-0-0	SPACER BLOCK
37	** C-MD-7408321-0-0	MOUNTING BRACKET
38	9008340-0	DEKCLAS PVC HARNESS CLASP (DK 1/2-375F)
39	9008341-0	DEKCLAS PVC HARNESS CLASP (DK -188F)
40	7006981-0-0	TU56 WIRING HARNESS
41	9007016	GROMMET
42	9008150	LUG #10 COPPER, TIN PLATED
REF	E-AD-7008487-2	TABLE TOP COVER ASSY. (TDCOV KIT)

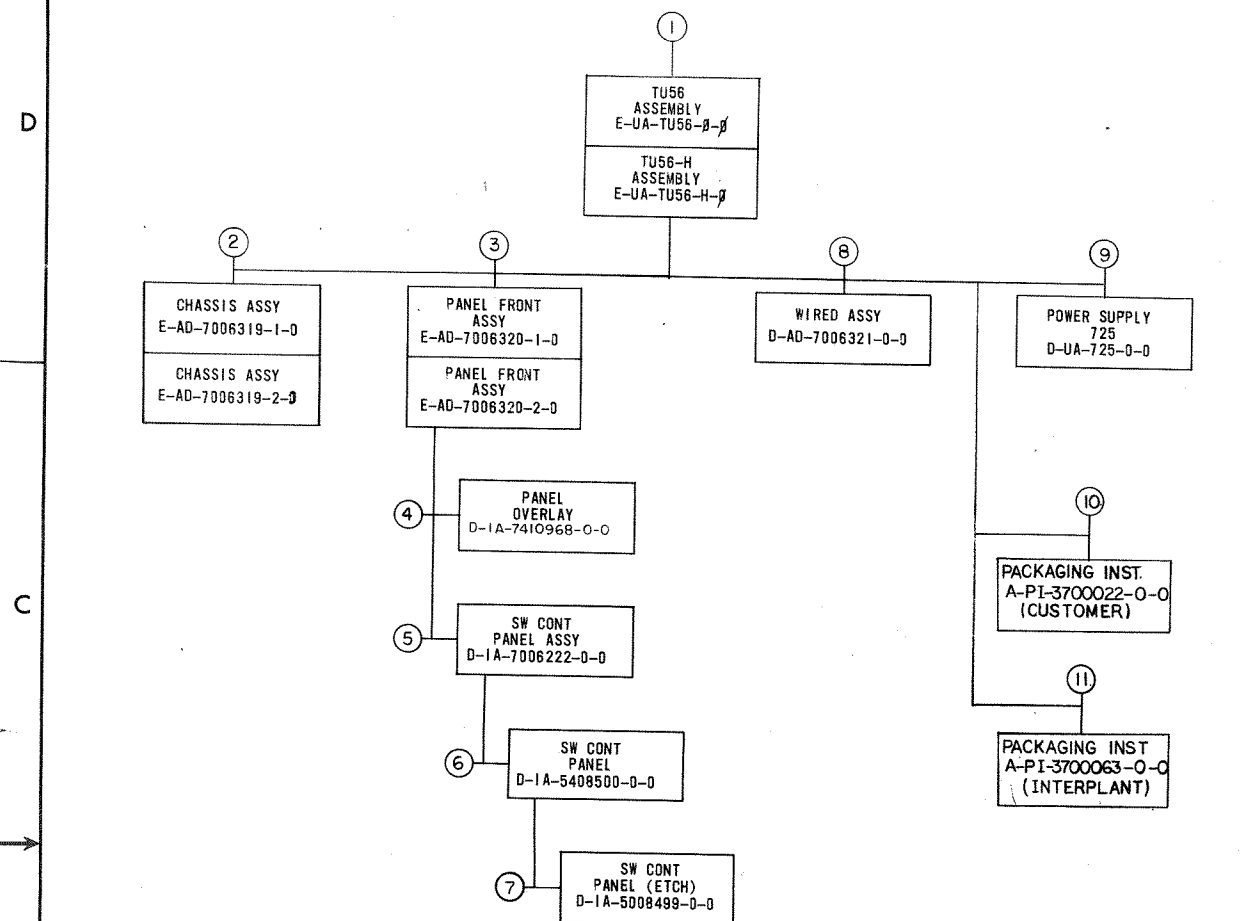
TITLE TU56 ASSEMBLY  
ASSY NO. E-UA-TU56-0-0  
SIZE CODE A PL  
SHEET 2 OF 3  
DISTRIBUTION TU56-0-0

		QUANTITY / VARIATION								
		TU56-H	TU56-M	TU56-MR	TU56-HC	TU56-C	TU56-MD	TU56-MC	TU56-MH	TU56-MJ
1		1	-	-	1		1			
1		1	1	1		1		1		
1		1	1	1		1		1		
1		1	1	1		1		1		
8		8	16	16	8	16	8	16	8	8
2		2	2	2		2	2	2	2	2
1		1	1	1		1		1		
2		2	2	2	2	2	2	2	2	2
1		1	1	1	1	1	1	1	1	1
2		2	2	2	2	2	2	2	2	2
2		2	2	2	2	2	2	2	2	2
1		1	1	1	1	1	1	1	1	1
2		2	2	2	2	2	2	2	2	2
1		1	1	1	1	1	1	1	1	1



This drawing and specifications, herein, are the property of Digital Equipment Corporation and shall not be reproduced or copied or used in whole or in part as the basis for the manufacture or sale of items without written permission.

41-0-960110 2



MECHANICAL				ELECTRICAL			
FIND NO.	DESCRIPTION	PART NO.	DEPT	FIND NO.	DESCRIPTION	PART NO.	DEPT
1.	TU56 ASSEMBLY	D-UA-TU56-0-0		1.	TU56	A-ML-TU56-0	
	TU56 ASSEMBLY	A-PL-TU56-0-0			MODULE UTILIZATION (TU56)	D-MU-TU56-0-MU	
	CABLE RIBBON M970-M970	D-UA-BC02X-3-0			MODULE UTILIZATION (TU56) (PL)	A-PL-TU56-0-MU	
	HALF COVER PLATE (TU56-H)	D-IA-7407534-0-0			TRANSPORT LOGIC DIAGRAM	D-BS-TU56-0-TLD	
	INFO CONN	C-IA-7405152-1-0			TU56 DEC TAPE	K-WL-TU56-0-2	
	INTERCONNECTION CABLE TU56	C-IA-7006223-0-0			ACCESSORY LIST	A-AL-TU56-0-5	
	OPTIONAL CABLE TU56	D-IA-7006412-0-0			ACCEPTANCE PROCEDURE	A-SP-TU56-0-6	
	MOUNTING BRACKET	C-MD-7408321-0-0		2.	CHASSIS ASSY	E-AD-7006319-1-0	
	SPACER BLOCK	C-MD-7408322-0-0			CHASSIS ASSY	E-AD-7006319-2-0	
	WIRING HARNESS	E-IA-7006981-0-0		3.	FRONT PANEL ASSY	E-AD-7006320-1-0	
					FRONT PANEL ASSY	E-AD-7006320-2-0	
2.	CHASSIS ASSY (TU56)	E-AD-7006319-1-0		6.	CIRCUIT SCHEMATIC	C-CS-5408500-0-1	
	CHASSIS ASSY (TU56-H)	E-AD-7006319-2-0		9.	WIRED ASSY TU56	D-AD-7006321-0-0	
	SCREEN FAN	C-MD-7404981-0-0			WIRED ASSY TU56	A-PL-7006321-0-0	
	CHASSIS ASSY (PL)(TU56)	A-PL-7006319-1-0					
	CHASSIS ASSY (PL)(TU56-H)	A-PL-7006319-2-0					
	CHASSIS	E-IA-7407391-0-0					
	LOCK, PANEL	C-MD-7407399-0-0					
3.	PANEL FRONT ASSY (TU56)	E-AD-7006320-1-0					
	PANEL FRONT ASSY (TU56-H)	E-AD-7006320-2-0					
	PANEL FRONT ASSY (PL)(TU56)	A-PL-7006320-1-0					
	PANEL FRONT ASSY (PL)(TU56-H)	A-PL-7006320-2-0					
	PANEL, MTG	E-MD-7407395-0-0					
	TAPE GUIDE (R.H.)	C-MD-7407283-1-0					
	TAPE GUIDE (L.H.)	C-MD-7407283-2-0					
	COVER PLATE (R.H.)	C-MD-7407282-1-0					
	COVER PLATE (L.H.)	C-MD-7407282-2-0					
	WEAR PLATE (R.H.)	B-MD-7405114-1-0					
	WEAR PLATE (L.H.)	B-MD-7405114-2-0					
	REAR CHECK TAPE GUIDE (L.H.)	C-MD-7405136-1-0					
	REAR CHECK TAPE GUIDE (R.H.)	C-MD-7405136-2-0					
	PIN, LOCK	B-MD-7407400-0-0					
	HUB ASSY 6PT CONTACT	C-IA-7407390-0-0					
	HUB GAUGE	C-IA-7408010-0-0					
	GUARD PLATE	C-MI-7408287-0-0					
4.	PANEL OVERLAY	D-IA-7410968-0-0					
	SILK SCREEN (WHITE)	C-SS-7410968-0-1					
	SILK SCREEN (BLACK)	C-SS-7410968-0-2					
5.	SWITCH CONTROL PANEL ASSY	D-IA-7006222-0-0					
6.	SWITCH CONTROL PANEL	D-IA-5408500-0-0					
7.	SWITCH CONTROL PANEL (ETCH)	D-IA-5008499-0-0					
8.	WIRED ASSY	D-AD-7006321-0-0					
	WIRED ASSY TU56 (PL)	A-PL-7006321-0-0					
	MTG BAR (5 BLOCKS) TU56	C-IA-7407393-0-0					
9.	POWER SUPPLY 725	D-UA-725-0-0					
	POWER SUPPLY 725 (PL)	A-PL-725-0-0					

REV	DATE	BY	CHK'D	DESCRIPTION
A	2-26-70	C. VAILLANT		CHASSIS ASSY
B	3-11-70	E. LUTTIG		CHASSIS ASSY
C	3-27-70	F.V. LUTTIG		CHASSIS ASSY
D	7-15-70	VAILLANT		CHASSIS ASSY
E	8-15-70	VAILLANT		CHASSIS ASSY
F	8-17-70	VAILLANT		CHASSIS ASSY
G	8-17-70	VAILLANT		CHASSIS ASSY
H	8-17-70	VAILLANT		CHASSIS ASSY
I	8-17-70	VAILLANT		CHASSIS ASSY
J	8-17-70	VAILLANT		CHASSIS ASSY
K	8-17-70	VAILLANT		CHASSIS ASSY
L	8-17-70	VAILLANT		CHASSIS ASSY
M	8-17-70	VAILLANT		CHASSIS ASSY
N	8-17-70	VAILLANT		CHASSIS ASSY
O	8-17-70	VAILLANT		CHASSIS ASSY
P	8-17-70	VAILLANT		CHASSIS ASSY
Q	8-17-70	VAILLANT		CHASSIS ASSY
R	8-17-70	VAILLANT		CHASSIS ASSY

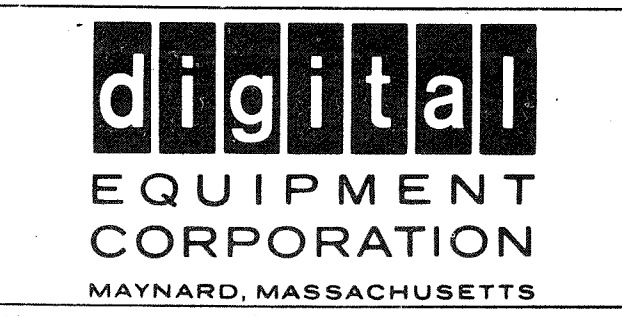
FIND NO.	DESCRIPTION	PART NO.	DEPT.	USAGE
10.	PACKAGING INSTRUCTION (CUST)	A-PL-3700022-0-0		
	FOAM TAPE GUIDE	A-PS-9905112-0-0		
	OUTER CARTON	A-PS-9905046-0-0		
	INNER CARTON	A-PS-9905047-0-0		
	TORO PADS	A-PS-9905044-0-0		
	BACK SUPPORT	A-PS-9905045-0-0		
	SIDE SUPPORT	A-PS-9905043-0-0		
	CORNER SUPPORT	A-PS-9905042-0-0		
	POLYBAG	A-PS-9905129-7-0		
11.	PACKAGING INSTRUCTION (INTERPLANT)	A-PL-3700063-0-0		
	DIE CUT TRAY	A-PS-9905195-0-0		
	TAPED TUBE BODY	A-PS-9905191-0-0		
	LAMINATED PIECE TOP AND BOTTOM	A-PS-9905192-0-0		
	SCORED SHEET	A-PS-9905194-0-0		
	TAPED TUBE CABLE HOLDER	A-PS-9905193-0-0		

DRWG NO  
K-WL-TU56 - ✓

REVISIONS			
REV LTR	ECO NO	DATE	ENG
A	TU56-00005	12-8-69	E.K.
B	TU56-00009	1-30-70	E.K.
C	TU56-00021	4-13-70	E.K.
D	TU56-00026	5-21-70	E.K.

FIRST USED ON OPTION/MODEL  
TU56

DRAWN GULICK	DATE 7-8-69
CHECKED <i>A. Wain</i>	DATE 8-20-69
ENG <i>[Signature]</i>	DATE <i>[Signature]</i>
PROJ ENG <i>[Signature]</i>	DATE <i>[Signature]</i>
PROD <i>[Signature]</i>	DATE <i>[Signature]</i>



TITLE  
TU56  
DEC TAPE

FOR TAPE # FILE \*

ASSY  
TU56

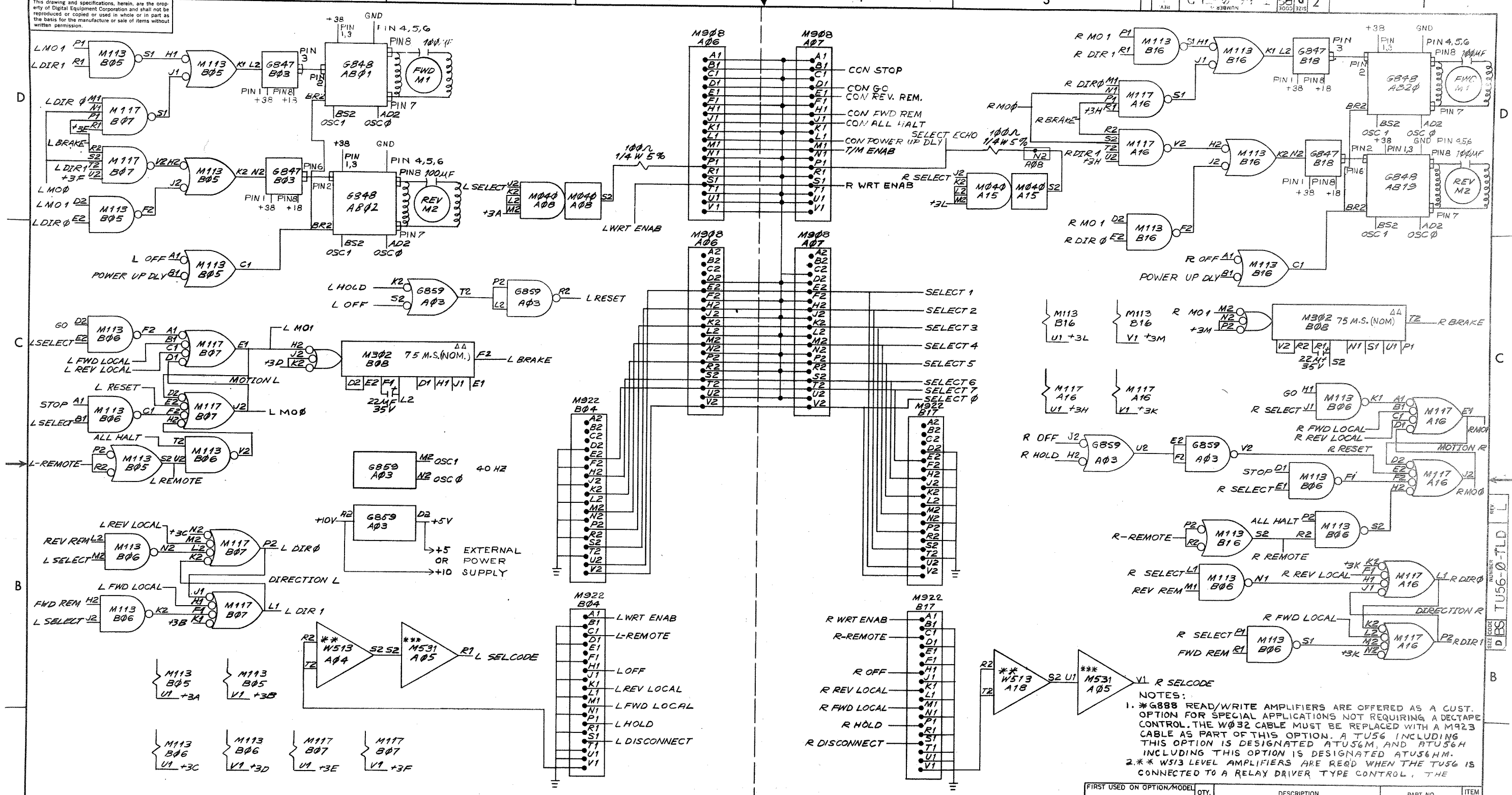
SCALE NONE SHEET | OF |

SIZE K	CODE WL	DWG. NO. TU56-0-2	REV LTR D
DIST.			





This drawing and specifications, herein, are the property of Digital Equipment Corporation and shall not be reproduced or copied in whole or in part as the basis for the manufacture or sale of items without written permission.



NOTES:  
 1. \*G888 READ/WRITE AMPLIFIERS ARE OFFERED AS A CUST. OPTION FOR SPECIAL APPLICATIONS NOT REQUIRING A DECTAPE CONTROL. THE W032 CABLE MUST BE REPLACED WITH A M923 CABLE AS PART OF THIS OPTION. A TU56 INCLUDING THIS OPTION IS DESIGNATED ATU56M, AND ATU56H INCLUDING THIS OPTION IS DESIGNATED ATU56HM.  
 2. \*\* W513 LEVEL AMPLIFIERS ARE READ WHEN THE TU56 IS CONNECTED TO A RELAY DRIVER TYPE CONTROL. THE

REV	CHG	NO.	DATE	BY	DESCRIPTION
1					
2					
3					
4					
5					
6					
7					
8					

LEFT HAND TRANSPORT

RIGHT HAND TRANSPORT

FIRST USED ON OPTION/MODEL	QTY.	DESCRIPTION	PART NO.	ITEM NO.
TU56				

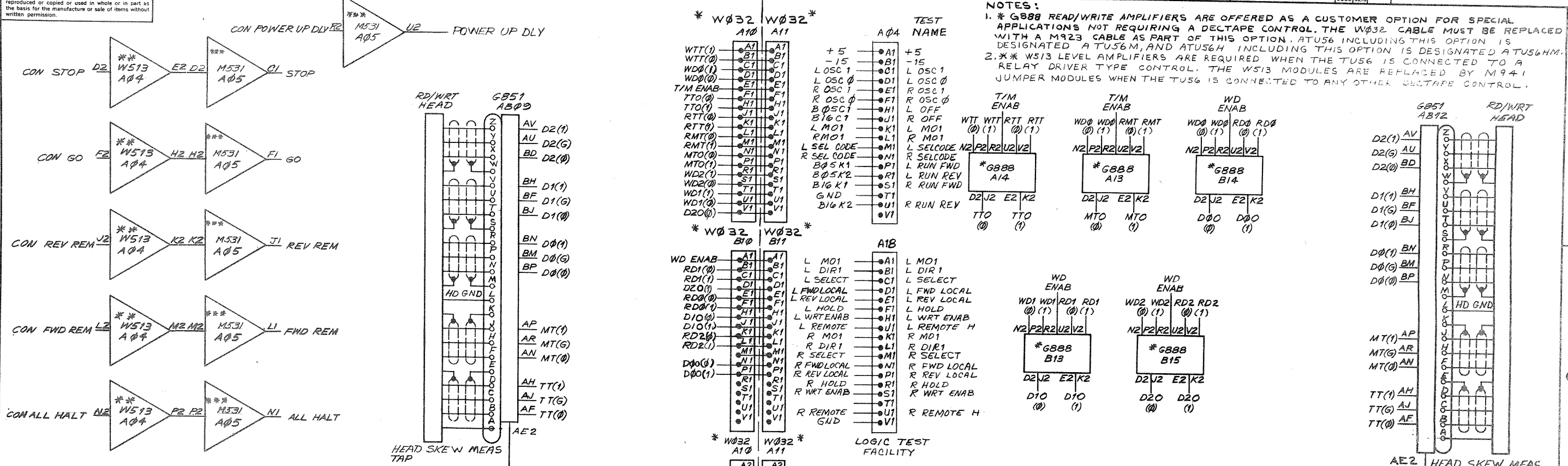
UNLESS OTHERWISE SPECIFIED	DRN	DATE	REVISION
DIMENSION IN INCHES			
TOLERANCES			
DECIMALS FRACTIONS ANGLES			
± 0.05 ± 1/64 ± 0°30'			
FINAL SURFACE QUALITY			
REMOVE BURRS AND BREAK SHARP CORNERS			

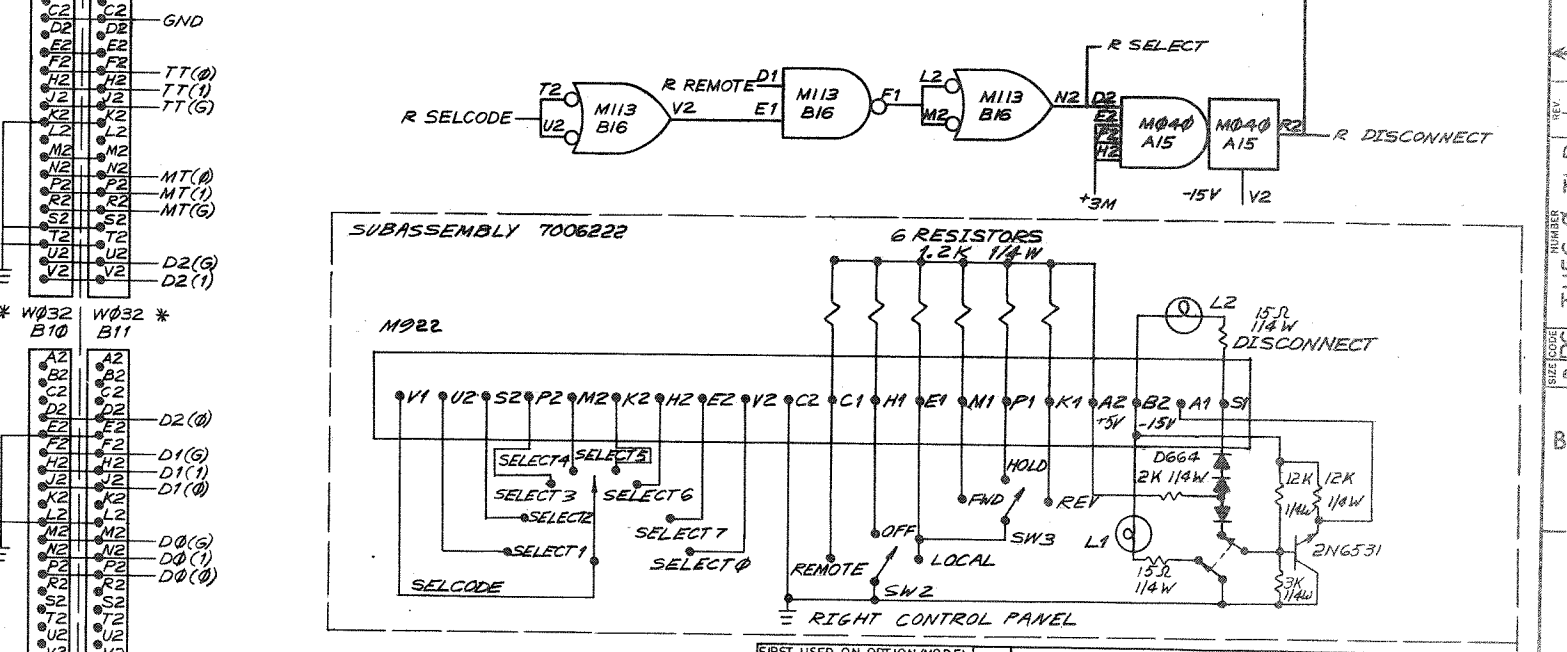
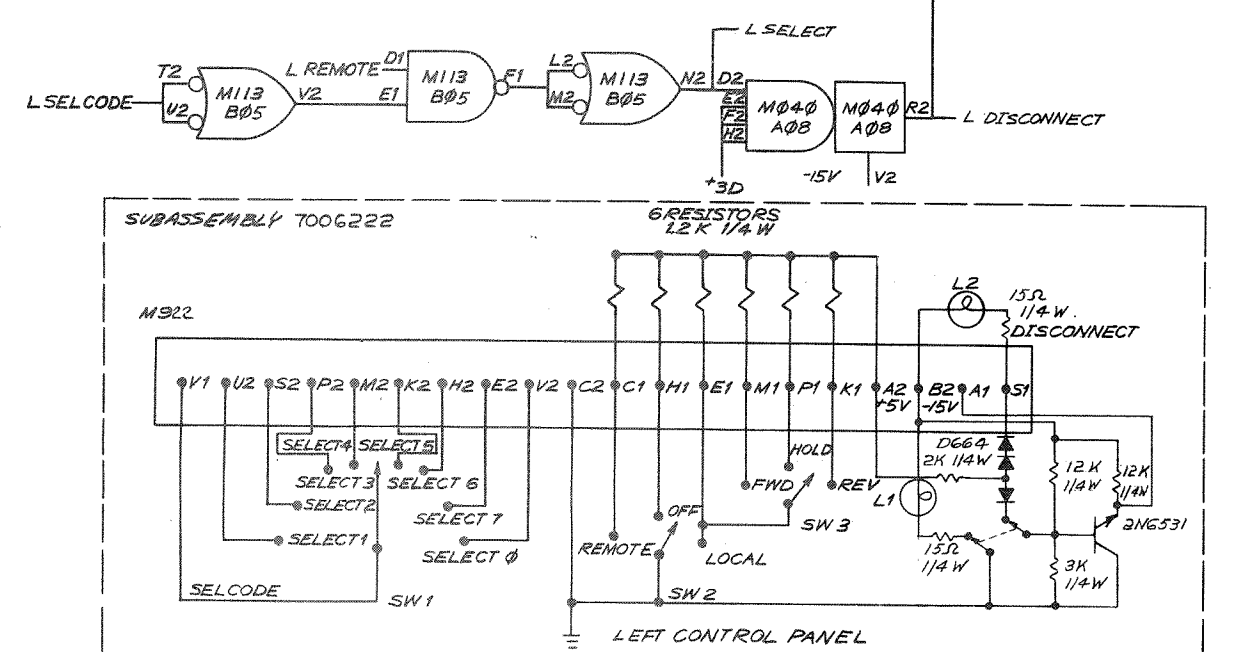
MATERIAL	NEXT HIGHER ASSY	SIZE/SCALE	NUMBER	REV
	A-ML-TU56-0	DBS	TU56-0-TLD	L

Unless otherwise specified, drawings and specifications herein are the property of Digital Equipment Corporation and shall not be reproduced or copied or used in whole or in part as the basis for the manufacture or sale of items without written permission.

7 071-0-9901 2



NOTES:  
 1. \* G888 READ/WRITE AMPLIFIERS ARE OFFERED AS A CUSTOMER OPTION FOR SPECIAL APPLICATIONS NOT REQUIRING A DECTAPE CONTROL. THE W032 CABLE MUST BE REPLACED WITH A M923 CABLE AS PART OF THIS OPTION. ATU56 INCLUDING THIS OPTION IS DESIGNATED ATU56M, AND ATU56H INCLUDING THIS OPTION IS DESIGNATED ATU56HM.  
 2. \*\* WS13 LEVEL AMPLIFIERS ARE REQUIRED WHEN THE TU56 IS CONNECTED TO A RELAY DRIVER TYPE CONTROL. THE WS13 MODULES ARE REPLACED BY M941 JUMPER MODULES WHEN THE TU56 IS CONNECTED TO ANY OTHER DECTAPE CONTROL.



REV	CHANGE NO

LEFT HAND TRANSPORT      RIGHT HAND TRANSPORT  
 CONT.  
 3. \*\*\* G742 JUMPER CARD REPLACES M531 WHEN TU56 IS USED WITH POS OUTPUT LOGIC CONT.

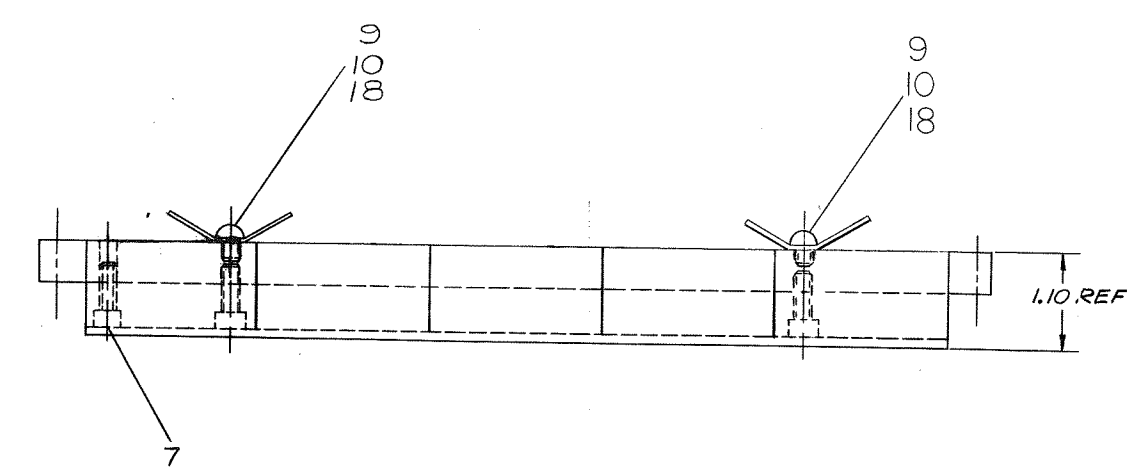
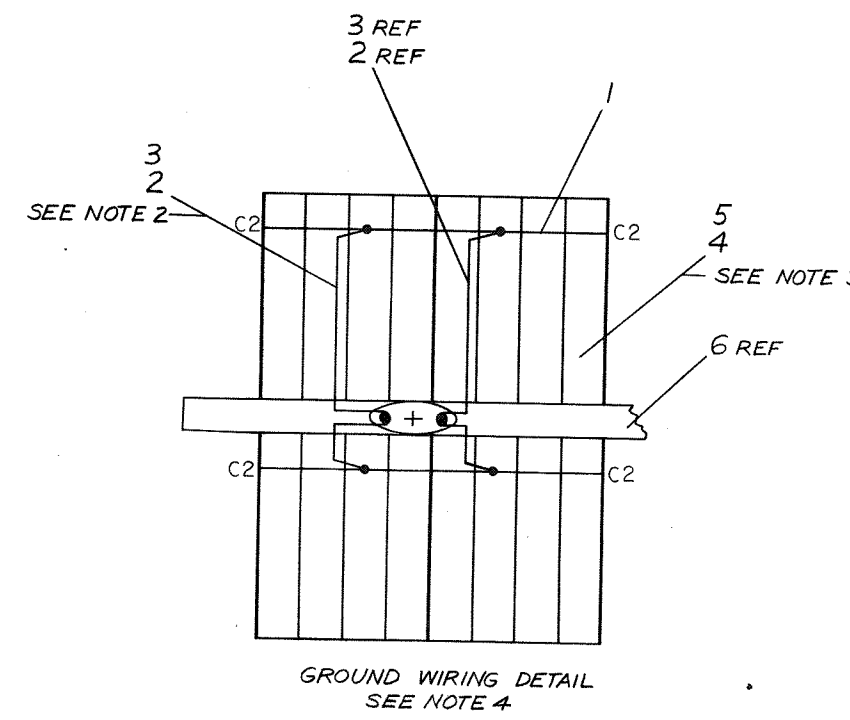
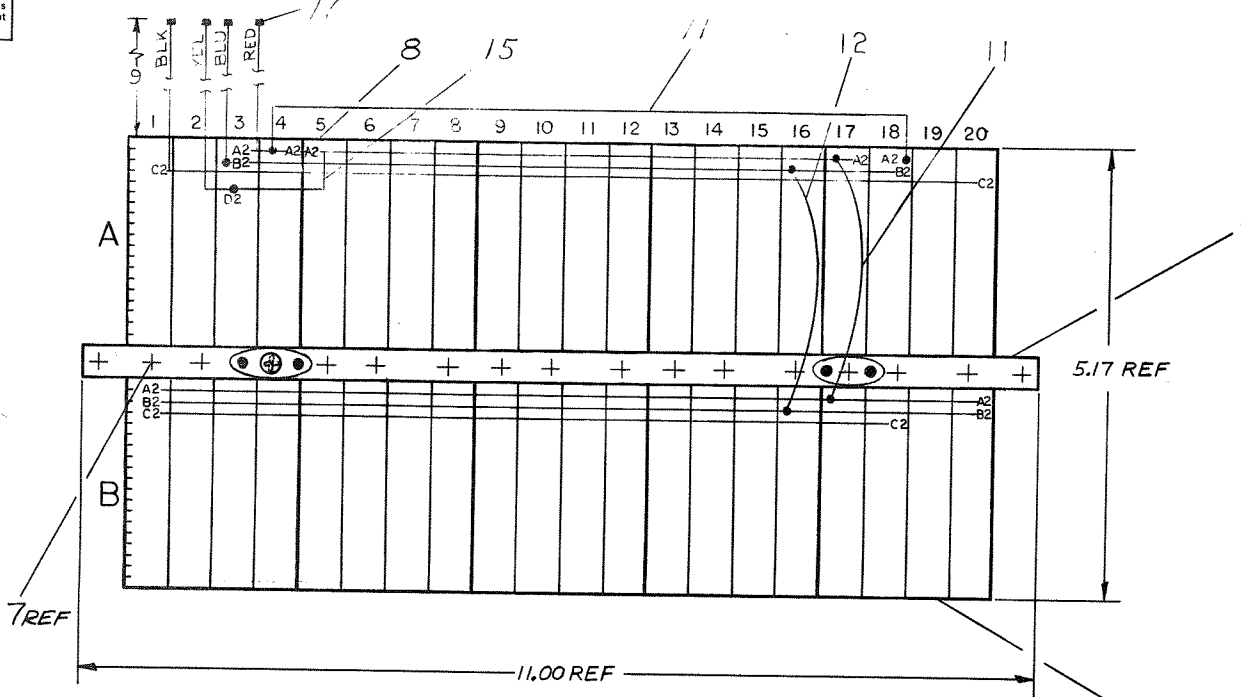
FIRST USED ON OPTION/MODEL TU56	QTY.	DESCRIPTION	PART NO.	ITEM NO.
UNLESS OTHERWISE SPECIFIED DIMENSION IN INCHES TOLERANCES DECIMALS FRACTIONS ANGLES ± .005 ± 1/64 ± 0°30'	DRN: <i>R. Rother</i>	DATE: 7-9-69	PARTS LIST	
UNLESS OTHERWISE SPECIFIED FINAL SURFACE QUALITY REMOVE BURRS AND BREAK SHARP CORNERS	CHK'D: <i>D. Galy</i>	DATE: 8-9-69	digital EQUIPMENT CORPORATION MAYNARD, MASSACHUSETTS	
MATERIAL	ENG: <i>L. H. H.</i>	DATE: 8/2/69	TITLE TRANSPORT LOGIC DIAGRAM	
FINISH	PROJ. ENG: <i>L. H. H.</i>	DATE: 8/2/69	NEXT HIGHER ASSY A-ML-TU56-0	
	PROD. DATE: 8/2/69		SIZE CODE D BS	NUMBER TU56-0-TLD
			SHEET 2 OF 2	REV L

This drawing and specifications herein are the property of Digital Equipment Corporation and shall not be reproduced or copied or used in whole or in part as the basis for the manufacture or sale of items without written permission.

REV. 2  
 NUMBER 7006321-0-0  
 SIZE CODE DAD

ITEM NO.	COMP	POL	FROM	TO	POL
13	RESISTOR	X	A08S2	A06P1	X
13	RESISTOR	-	A08N2	A07P1	-
14	CAPACITOR	-	B08F1	A08L2	+
14	CAPACITOR	-	B08R1	B08S2	+

- NOTES:
1. CONNECTIONS ON ITEMS #1 & #2 TO BE SOLDERED AND LOCATED AT MINIMUM PRACTICAL HEIGHT ABOVE BLOCK
  2. CONN BLOCK TO BE GROUNDED TO GND LUG AS SHOWN
  3. USE YELLOW WIRE (ITEM #3) FOR MACHINE WRAPPED & BLUE WIRE (ITEM #4) FOR HAND WRAPPED WIRING
  4. JUMPER GROUND BUSSING AS SHOWN IN PLACE



REV	CHANGE NO	DATE	BY
A	TU56-00005	6/27/69	E. LUTTIG
B	TU56-00013	3/19/70	E. LUTTIG
C	TU56-00017	3/6/70	E. LUTTIG
D	TU56-00055	3/19/70	E. LUTTIG
E	TU56-00062	3/18/71	E. LUTTIG
F	7006321-00001	3/2/71	E. MARTEL
		10/8/74	E. MARTEL

FIRST USED ON OPTION/ MODEL TU56	DO NOT SCALE DRAWING UNLESS OTHERWISE SPECIFIED DIMENSION IN INCHES						
TOLERANCES DECIMALS .XXX = ± .005 .XX = ± .02 .X = ± .1	<table border="1"> <tr> <th>DECIMALS</th> <th>FRACTIONS</th> <th>ANGLES</th> </tr> <tr> <td>± .005</td> <td>± 1/64</td> <td>± 0°30'</td> </tr> </table>	DECIMALS	FRACTIONS	ANGLES	± .005	± 1/64	± 0°30'
DECIMALS	FRACTIONS	ANGLES					
± .005	± 1/64	± 0°30'					
MATERIAL / / /	FINAL SURFACE QUALITY REMOVE BURRS AND BREAK SHARP CORNERS						
FINISH / / /							

QTY.	DESCRIPTION	PART NO.	ITEM NO.
	PARTS LIST		
	digital EQUIPMENT CORPORATION MAYNARD, MASSACHUSETTS		
	TITLE WIRED ASSY TU56		
	NEXT HIGHER ASSY E-UA-TU56-0-0	SIZE CODE DAD	NUMBER 7006321-0-0
	SCALE 1/1	SHEET 1 OF 1	REV. F

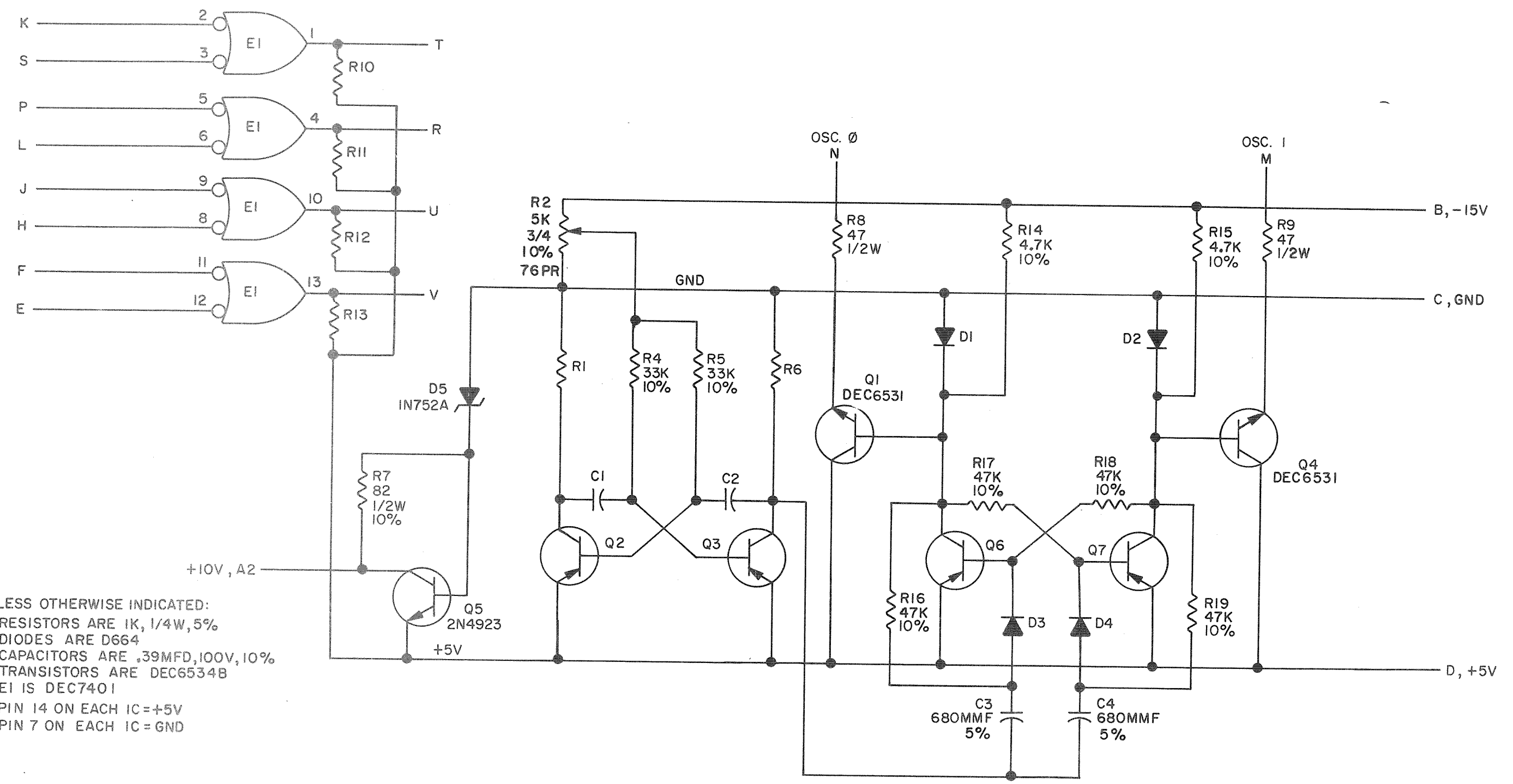
REV. F  
 NUMBER 7006321-0-0  
 SIZE CODE DAD

**DIGITAL EQUIPMENT CORPORATION**  
MAYNARD, MASSACHUSETTS  
**PARTS LIST**

DIGITAL EQUIPMENT CORPORATION MAYNARD, MASSACHUSETTS <b>PARTS LIST</b>			QUANTITY / VARIATION																		
MADE BY KEN GULICK		CHECKED D. HEALY	SECTION	7006321-0																	
DATE 6/19/69		DATE 7/23/69	1																		
ENG <i>E. Gulick</i>		PROD <i>C. R. Templeman</i>	ISSUED SECT.																		
DATE 8/26/69		DATE 8/26/69	1																		
ITEM NO.	DWG NO. / PART NO.	DESCRIPTION																			
1	1205541	BUS STRIP		A/R																	
2	9107560-01	22 AWG BUS WIRE		A/R																	
3	9107265-09	#22 TUBING, TEFLON, WHITE		A/R																	
4	9105740-44	30 AWG SOLID TEF INS. WIRE, YELLOW		A/R																	
5	9105740-66	30 AWG SOLID TEF INS. WIRE, BLUE		A/R																	
6	6-IA-7407393-0-0	MTG BAR (5 BLOCKS) TU56		1																	
7	9006120	SCR. PHL HD SELF-TAPPING 8-32 x 5/8		110																	
8	1205348	288 PIN CONN BLOCK		5																	
9	9006775	TERMINAL #2116-08-00 SHAKEPROOF		2																	
10	9008143	SCR. PHL HD SELF-TAPPING 8-32 x 1/2		2																	
11	9107350-22	22 AWG STRD TEF INS WIRE, RED		A/R																	
12	9107530-66	22 AWG STRD TEF INS WIRE, BLU		A/R																	
13	7408016	RESISTOR 100 OHMS 1/4 W 5% CCW/TERMI PTS		2																	
14	7408016	CAPACITOR 22 MFD 35V S. TANT W/TERMI PTS		2																	
REF	K-WL-TU56-0-2	WIRE LIST		X																	
15	9107350-44	22 AWG STRD TEF INS WIRE, YEL		A/R																	
16	9107350-00	22 AWG STRD TEF INS WIRE, BLK		A/R																	
17	9007917	CONN. SOLDERLESS #50902 ARKLES		4																	
18	9006634	WASHER INT #8		2																	
TITLE		ASSY NO.		SIZE	CODE	NUMBER		REV.	ECO NO.												
WIRED ASSY TU56		D-AD-7006321-0-0		A	PL	7006321-0-0		E	7006321-0000L												
DEC FORM NO. DRA 110		SHEET 1 OF 1		DIST.																	



THIS SCHEMATIC IS FURNISHED ONLY FOR TEST AND MAINTENANCE PURPOSES. THE CIRCUITS ARE PROPRIETARY IN NATURE AND SHOULD BE TREATED ACCORDINGLY. COPYRIGHT 1969 BY DIGITAL EQUIPMENT CORPORATION



UNLESS OTHERWISE INDICATED:  
 RESISTORS ARE 1K, 1/4W, 5%  
 DIODES ARE D664  
 CAPACITORS ARE .39MFD, 100V, 10%  
 TRANSISTORS ARE DEC6534B  
 E1 IS DEC7401  
 PIN 14 ON EACH IC = +5V  
 PIN 7 ON EACH IC = GND

REV. NO.	REV.
00001	A
00002	B
00003	C

DRN. BUTLER	DATE 11-13-69
CHK'D <i>V. Smith</i>	DATE 11-17-69
ENG. <i>E. Lutting</i>	DATE 1/24/69
PROD.	DATE

TRANSISTOR & DIODE CONVERSION CHART	
DEC	EIA
D664	IN3606
DEC6534B	MPS6534B
DEC6531	MPS6531
2N4923	SAME



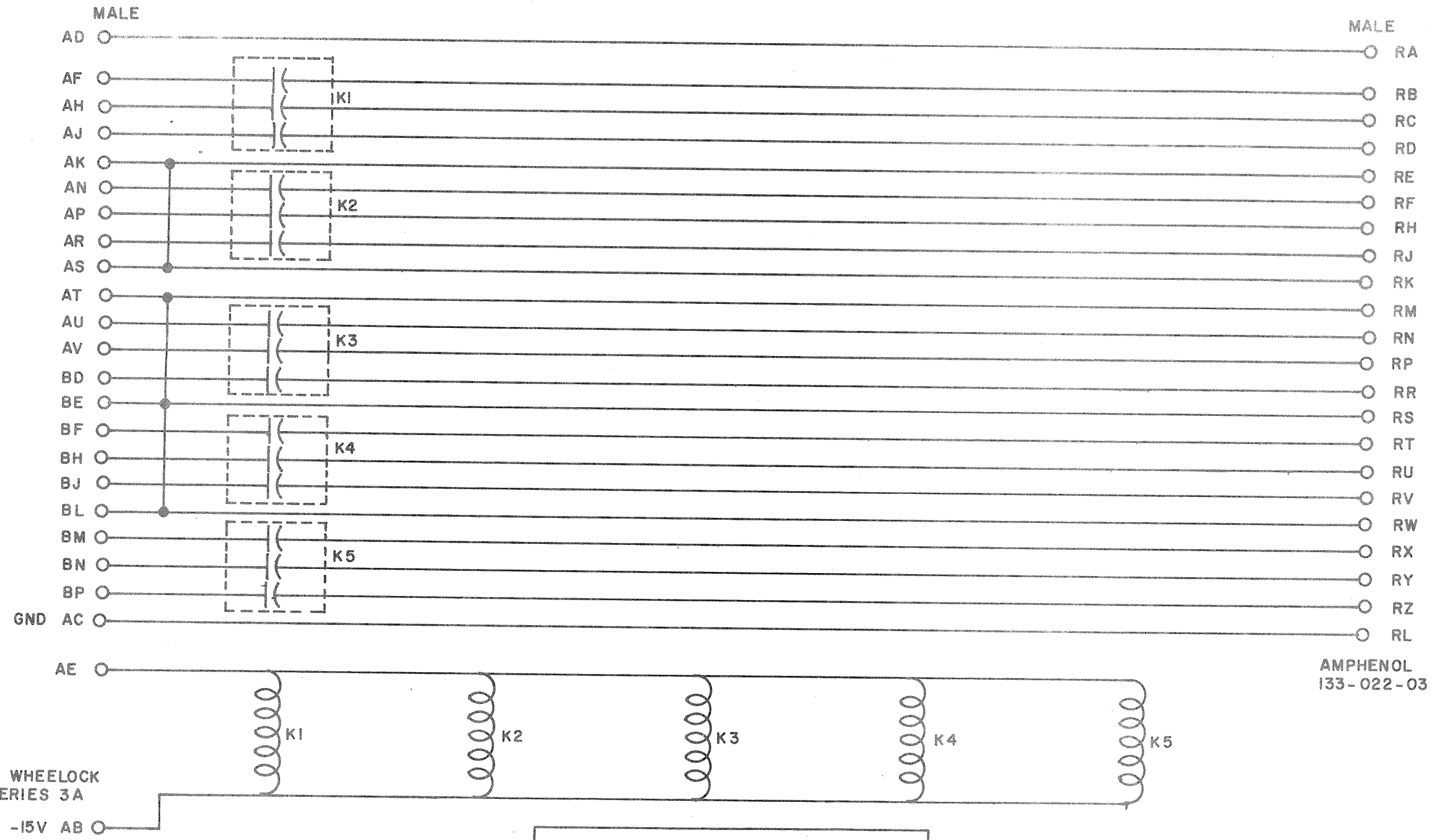
TITLE CLOCK & REGULATOR G859			
SIZE B	CODE CS	NUMBER G859-0-1	REV. C
PRINTED CIRCUIT REV. A			

*M. L. 11-17-69*

*4 PINK*

*DIST. 321, 434, 435*

THIS SCHEMATIC IS FURNISHED ONLY FOR TEST AND MAINTENANCE PURPOSES. THE CIRCUITS ARE PROPRIETARY IN NATURE AND SHOULD BE TREATED ACCORDINGLY. COPYRIGHT 1965 BY DIGITAL EQUIPMENT CORPORATION



AMPHENOL  
133-022-03

NOTE:  
RELAYS ARE WHEELOCK  
REED, 260 SERIES 3A  
12V DC

REVISIONS	CHK	CHG NO	REV.
	DAW	4613	1
	REV & REDR.	5196	B

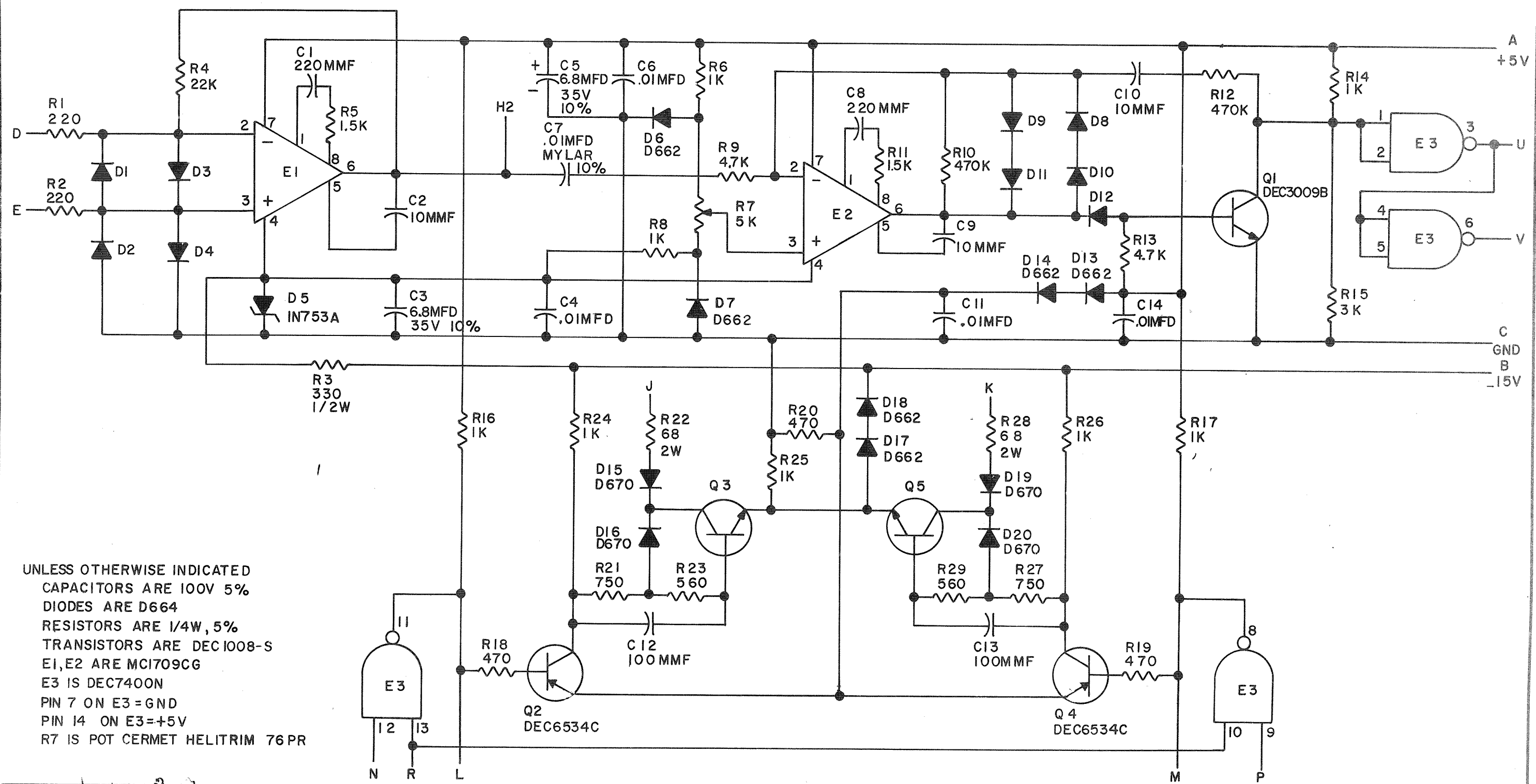
DRN. H.W. PORTER	DATE 1-13-65
CHK'D N. PERRYMAN	DATE 1-25-65
ENG. D. WARDIMAN	DATE 1-25-65
PROD.	DATE

TRANSISTOR & DIODE CONVERSION CHART			
DEC	EIA	DEC	EIA

**digital**  
EQUIPMENT  
CORPORATION  
MAYNARD, MASSACHUSETTS

TITLE RELAY G851			
SIZE B	CODE CS	NUMBER G851-0-1	REV. B
PRINTED CIRCUIT REV.			B

THIS SCHEMATIC IS FURNISHED ONLY FOR TEST AND MAINTENANCE PURPOSES. THE CIRCUITS ARE PROPRIETARY IN NATURE AND SHOULD BE TREATED ACCORDINGLY. COPYRIGHT 1969 BY DIGITAL EQUIPMENT CORPORATION



UNLESS OTHERWISE INDICATED  
 CAPACITORS ARE 100V 5%  
 DIODES ARE D664  
 RESISTORS ARE 1/4W, 5%  
 TRANSISTORS ARE DEC1008-S  
 E1, E2 ARE MC1709CG  
 E3 IS DEC7400N  
 PIN 7 ON E3 = GND  
 PIN 14 ON E3 = +5V  
 R7 IS POT CERMET HELITRIM 76 PR

REVISIONS	CHK	CHG NO.	REV.
		6888	A

DRN.	DATE
<i>A. Clement</i>	8-29-69
CHK'D	DATE
<i>J. D. Hallett</i>	9/3/69
ENG.	DATE
<i>J. Calverce</i>	9/25/69
PROD.	DATE

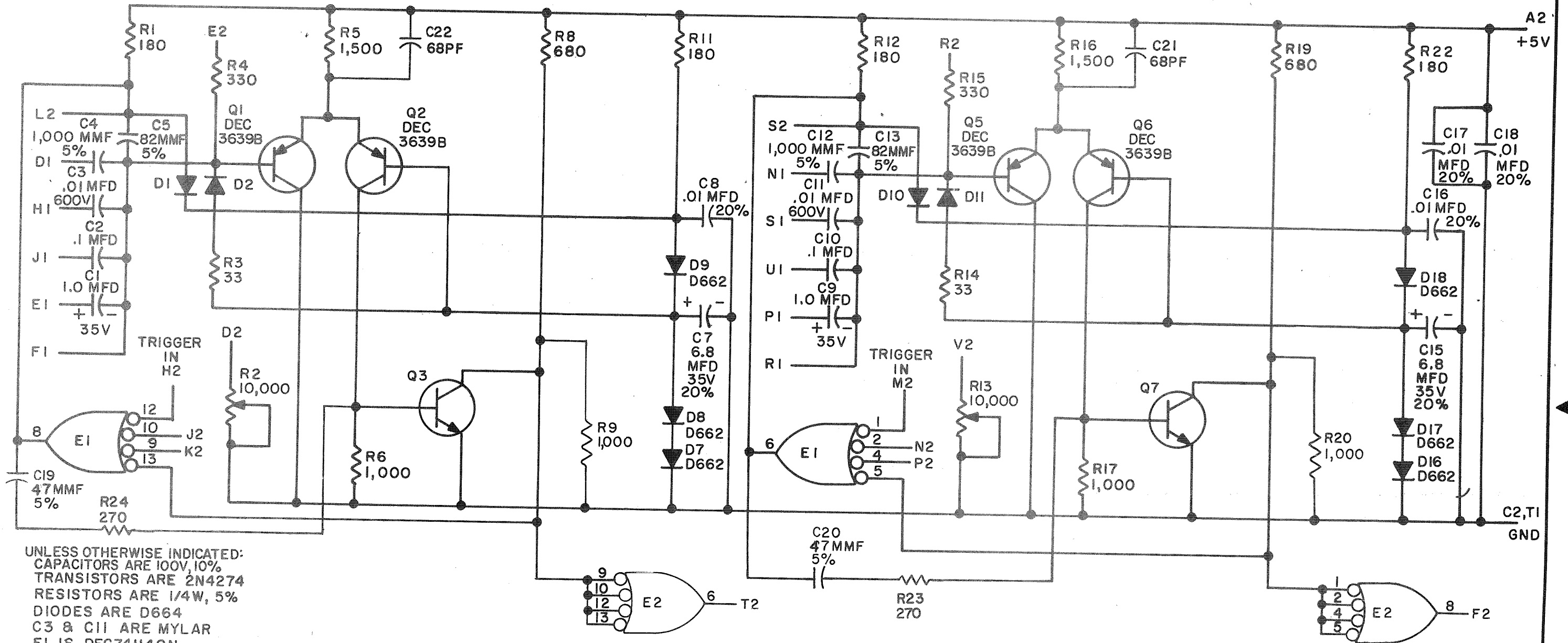
TRANSISTOR & DIODE CONVERSION CHART			
DEC		EIA	
D664	IN3606	DEC1008-S	MM1008
D662	IN645		
D670	SAME		
DEC3009B	2N3009B		
DEC6534C	MPS6534		



TITLE			
MANCHESTER READER/WRITER G888			
SIZE	CODE	NUMBER	REV.
B	CS	G888-0-1	B
PRINTED CIRCUIT REV.			A

THIS SCHEMATIC IS FURNISHED ONLY FOR TEST AND MAINTENANCE PURPOSES. THE CIRCUITS ARE PROPRIETARY IN NATURE AND SHOULD BE TREATED ACCORDINGLY. COPYRIGHT 1967 BY DIGITAL EQUIPMENT CORPORATION

REV. L  
NUMBER M302-0-1  
SIZE CODE B CS



UNLESS OTHERWISE INDICATED:  
CAPACITORS ARE 100V, 10%  
TRANSISTORS ARE 2N4274  
RESISTORS ARE 1/4W, 5%  
DIODES ARE D664  
C3 & C11 ARE MYLAR  
E1 IS DEC74H40N  
PIN 7 ONIC'S = GND  
PIN 14 ONIC'S = +5V  
R2 & R13 ARE HELITRIM POT #78PR  
1.0MFD CAPACITORS ARE TANTALUM  
E2 IS DEC7413N

PARTS LIST A-PL-M302-0-0

REV.	CHG. NO.	B	C	D	E	F	H	J	K	L
6507	6719	6881	7077	00001	00002	00003	00004			

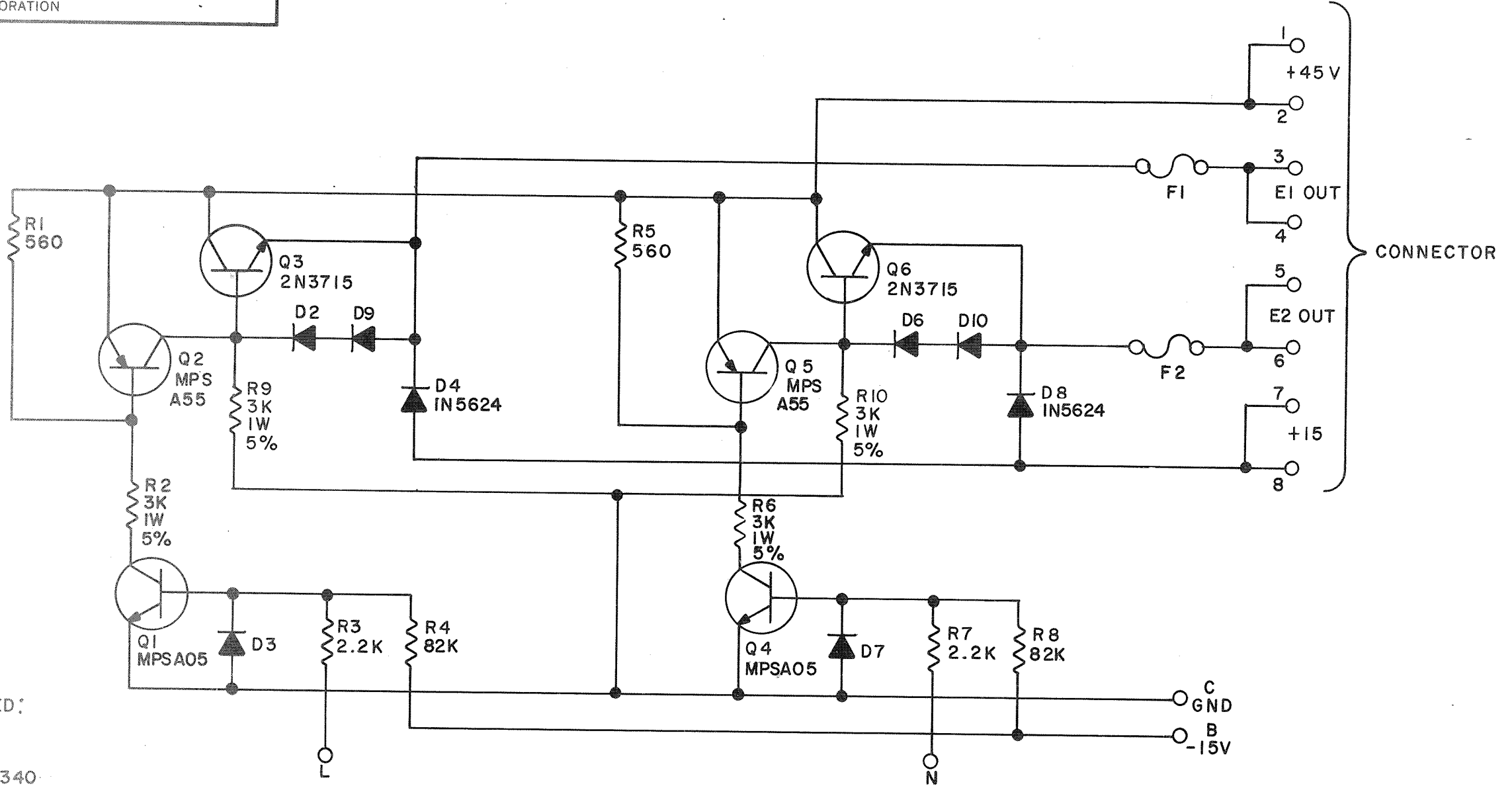
DRN. <i>M. Waller</i>	DATE 6-15-67
CHK'D <i>[Signature]</i>	DATE 6/21/67
ENG. <i>L. White</i>	DATE 6/21/67
PROD. 1	DATE

TRANSISTOR & DIODE CONVERSION CHART			
DEC	EIA	DEC	EIA
2N4274	SAME		
DEC3639B	2N3639		
D662	IN645		
D664	IN3606		

**digital**  
EQUIPMENT CORPORATION  
MAYNARD, MASSACHUSETTS

TITLE ONE SHOT DELAY M302			
SIZE B	CODE CS	NUMBER M302-0-1	REV. L
PRINTED CIRCUIT REV.			L

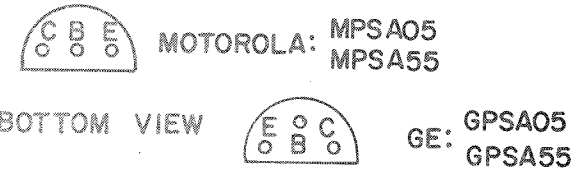
THIS SCHEMATIC IS FURNISHED ONLY FOR TEST AND MAINTENANCE PURPOSES. THE CIRCUITS ARE PROPRIETARY IN NATURE AND SHOULD BE TREATED ACCORDINGLY. COPYRIGHT 1969 BY DIGITAL EQUIPMENT CORPORATION



UNLESS OTHERWISE INDICATED:  
 DIODES ARE D672  
 RESISTORS ARE 1/4W, 10%  
 CONNECTOR IS DEC #1209340  
 CONNECTOR PINS ARE DEC #1209456  
 F1, F2 ARE 5 AMP

NOTE: Q1, Q2, Q4, Q5 HAVE VARIED PACKAGES  
 DEPENDING ON SOURCE.

SEE DIAGRAM:



REVISIONS	CHK	CHG NO.	REV.
		00002	A
		00003	
		00004	B
		00005	SUPP.
		00006	C

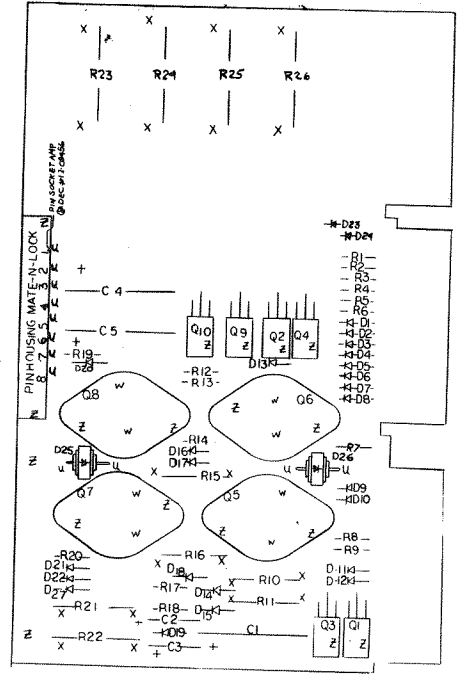
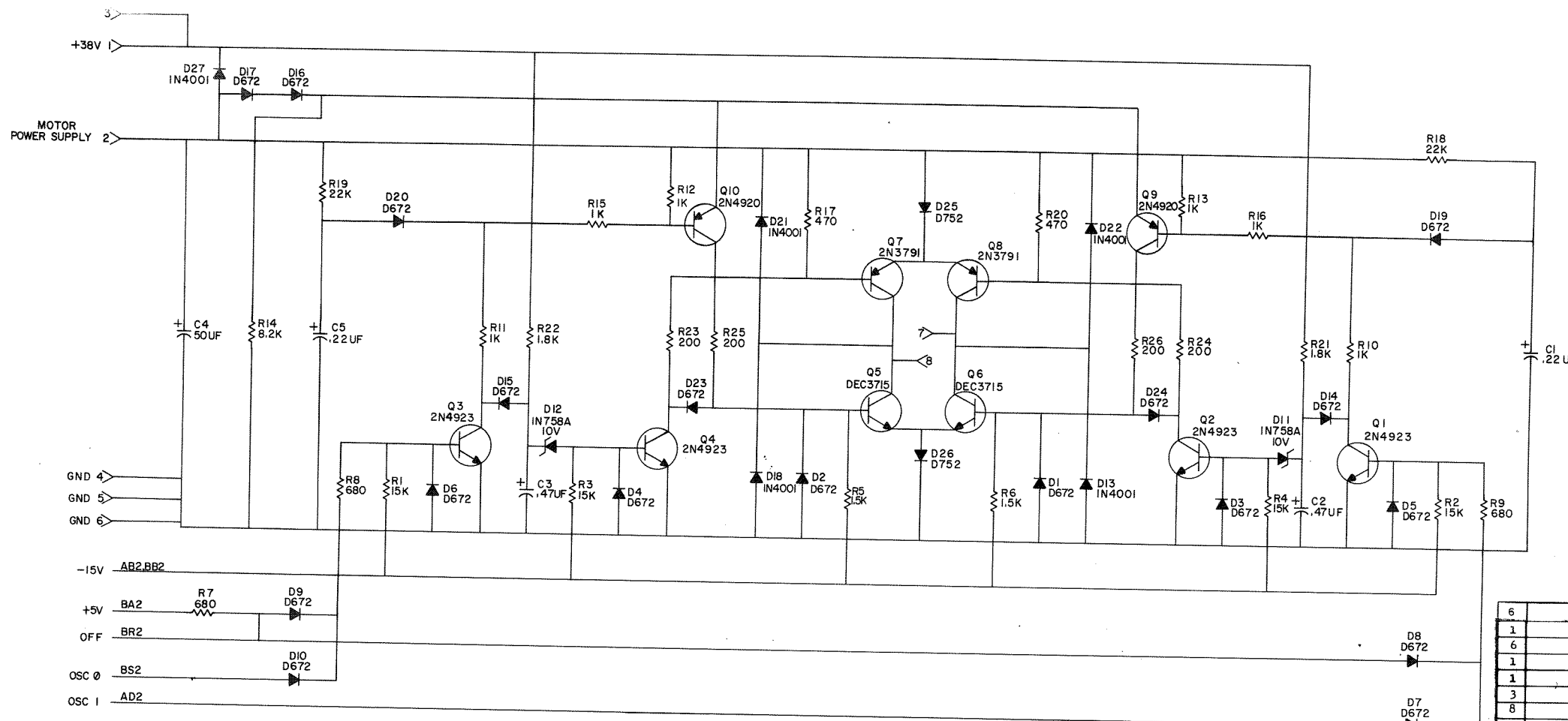
DRN. *R. Almona* DATE 9-9-69  
 CHK'D. *J. J. Adette* DATE 9/9/69  
 ENG. *E. L. Lathrop* DATE 2-17-70  
 PROD. DATE

TRANSISTOR & DIODE CONVERSION CHART			
DEC	EIA	DEC	EIA
D672	IN3653		
MPSA05			
2N3715	NONE		
MPSA55			
IN5624	SAME		

**digital**  
 EQUIPMENT CORPORATION  
 MAYNARD, MASSACHUSETTS

TITLE DUAL MOTOR VOLTAGE CONTROL G847			
SIZE B	CODE CS	NUMBER G847-0-1	REV. D
PRINTED CIRCUIT REV. E			

THIS SCHEMATIC IS FURNISHED ONLY FOR TEST AND MAINTENANCE PURPOSES. THE CIRCUITS ARE PROPRIETARY IN NATURE AND SHOULD BE TREATED ACCORDINGLY. COPYRIGHT 1971 BY DIGITAL EQUIPMENT CORPORATION.



QTY.	REF. DESIGNATION	DESCRIPTION	DEC PART NO.	MANUFACTURER
6		NYLON SCREW 4-40X3/8	9006401-4	36
1		FIBER SPACER 1/4 x 1/4 x #6	9007615	35
6		4-40 NYLON HEX NUT	9007992	34
1		NYLON HEXNUT #4	9007992	33
1		NYLON SCREW 4-40 x 1/2	9006402-4	32
3		HANDLE EYELET	9006732	31
8		4-40 KEFNUT	9006557	30
8		4-40 x 5/16" SCREW	9006010-4	29
1		HANDLE, FLIP CHIP - GREEN	9008337-01	28
2	Q9, 10	TRANSISTOR 2N4920	1509605	27
4	Q1, 2, 4, 3	TRANSISTOR 2N4923	1509604	26
2	Q7, 8	TRANSISTOR 2N3791	1509581	25
2	Q5, 6	TRANSISTOR DEC 3715	1503068	24
2	R18, 19	RES. 22K 1/4W 5%	1301808	23
4	R23, 24, 25, 26	RES. 200 5W 5%	1309639	22
4	R1, 2, 3, 4	RES. 15K 1/4W 5%	1300496	21
1	R14	RES. 8.2K 1/4W 5%	1303179	20
2	R21, 22	RES. 1.8K 2W 10%	1300402	19
2	R5, 6	RES. 1.5K 1/4W 5%	1300391	18
4	R10, 11, 15, 16	RES. 1K 1W 5%	1300368	17
2	R12, 13	RES. 1K 1/4W 5%	1300365	16
3	R7, 8, 9	RES. 680 1/4W 5%	1301424	15
2	R17, 20	RES. 470 1/4W 5%	1300316	14
8		PIN, SOCKET	1209456	13
1		PIN HOUSING	1209340	12
2	D11, 12	DIODE ZENER 1N758A 10V, 1/4W 5%	1100125	11
2	D25, 26	DIODE D752	1110615	10
18	D1-10, 14-17, 19, 20, 23, 24	DIODE D672	1105275	9
5	D13, 18, 21, 22, 27	DIODE 1N4001	1102942	8
2	C1, 5	CAP. 0.22UF 100V 10% MYLAR	1000037	7
2	C2, 3	CAP. 0.47UF 35V 10% S.TANT	1005965	6
1	C4	CAP. .50UF 50V -10+75% S.TANT	1000080	5
1		ETCHED CIRCUIT BOARD	5008522	4
		MODULE ECO HISTORY	B-MH-G848-0-6	3
		ETCH REARPL. MOTOR CCNT	EIA-5008522-0-0	2
		X-Y COORDINATE HOLE LOCATION	K-CO-G848-0-4	1

REV	DATE	BY	CHKD	DATE	DESCRIPTION
1	2-2-69	A. RITCEY			TRANSISTOR & DIODE CONVERSION CHART
2	2-4-69	R. TREMBLAY			
3	4-3-70	E. LUTTIG			

DEC	EIA	DEC	EIA
2N4920	SAME	D672	1N3653
2N4923	SAME	D752	
2N3791	SAME	1N758A, 10V	SAME
DEC3715	2N3715	1N4001	SAME

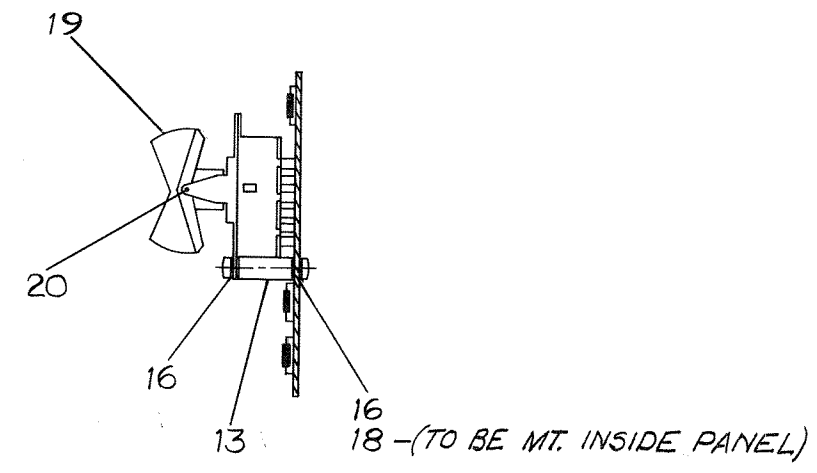
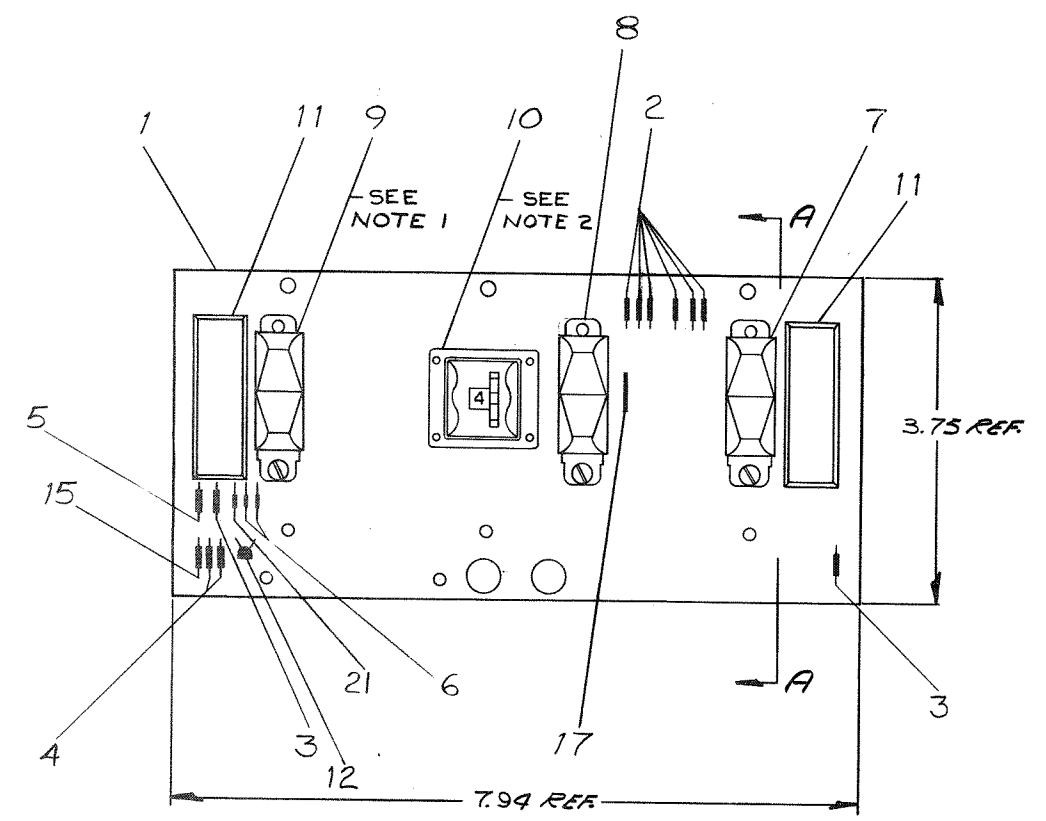
DRN: A. RITCEY DATE: 2-2-69  
 CHKD: R. TREMBLAY DATE: 2-4-69  
 ENG: E. LUTTIG DATE: 4-3-70  
 PROD: DATE:

**digital** MOTOR CONTROL  
 EQUIPMENT CORPORATION  
 SIZE: D CODE: CS NUMBER: 8848-0-1 REV: K  
 PRINTED CIRCUIT REV: M

This drawing and specifications, herein, are the property of Digital Equipment Corporation and shall not be reproduced or copied or used in whole or in part as the basis for the manufacture or sale of items without written permission.

0-0-0058049597 2

- NOTES:
1. HAND DEGREASE ONLY-DO NOT VAPOR DEGREASE AS IT WILL CAUSE MALFUNCTION IN SWITCHES
  2. IN SOLDERING OPERATIONS DO NOT ALLOW FLUX OR CLEANING AGENT TO ENTER SWITCH



SECTION A-A

REV.	CHG. NO.	DATE	BY
B	00020	4-3-70	LUTTIG
C	00021	4/3/70	LUTTIG
D	00003	3/24/73	H. DRAB

FIRST USED ON OPTION / MODEL  
TU56

**TOLERANCES**  
DECIMALS  
.XXX = ±.005  
.XX = ±.02  
.X = ±.1

DO NOT SCALE DRAWING  
UNLESS OTHERWISE SPECIFIED DIMENSION IN INCHES

TOLERANCES  
DECIMALS FRACTIONS ANGLES  
= .008 = 1/64 = 0°30'

FINAL SURFACE QUALITY  
REMOVE BURRS AND BREAK SHARP CORNERS

MATERIAL  
FINISH

QTY.	DESCRIPTION	PART NO.	ITEM NO.
	PARTS LIST		
	DRN	DATE	DATE
	CHK'D	DATE	DATE
	ENG.	DATE	DATE
	PROJ. ENG.	DATE	DATE
	PROD.	DATE	DATE
	NEXT HIGHER ASSY		
	D-7A-700622-0-0		
	SCALE		
	SHEET	OF	
	TITLE		
	digital EQUIPMENT CORPORATION MAYNARD, MASSACHUSETTS		
	SWITCH CONTROL PANEL (TU56)		
	SIZE CODE	NUMBER	REV.
	DAD	5408500-0-0	D
	DIST.		

REV. D  
NUMBER 5408500-0-0  
SIZE CODE DAD

**DIGITAL EQUIPMENT CORPORATION  
MAYNARD, MASSACHUSETTS  
PARTS LIST**

MADE BY *W. J. ...* CHECKED *D. Wallace* SECTION  
 DATE *3-18-70* DATE *1-30-70* DATE *10-1-1969*  
 ENG *E. Sullivan* PROD *P. Sullivan* ISSUED SECT.  
 DATE *3-18-70* DATE *3-18-70*

ITEM NO.	CL	DWG NO./PART NO. BASIC	PART NO. VAR.	DESCRIPTION	QTY/VAR	UNIT COST	UNIT QUANTITY	UNIT QUANTITY ISSUED
REF		C-GS-5408500-0-1		CIRCUIT SCHEMATIC				
REF		K-CO-5408500-0-4		X-Y COORDINATE HOLE LOCATION				
REF		D-AH-5408500-0-5		ASSY/DRILLING HOLE# LAYOUT				
1		5008499		ETCHED CKT. BD. TU56			1	
2		1300386		RES. 1.2K, 1/4W, 10% C.C.			6	
3		1301421		RES. 15, 1/4W, 10%			2	
4		1300490		RES. 12K, 1/4W, 10%			2	
5		1302388		RES. 2K, 1/4W, 5%			1	
6		1100114		DIODE D664			2	
7		1209614		SWITCH 3 POS. RS-38-FB PC			1	
8		1209613		SWITCH 3 POS. RS-39-FB PC			1	
9		1209612		SWITCH MINI RS-33-FB PC			1	
10		1209617		SWITCH 8 POS THUMBWHEEL SWITCH			1	
11		1209637		LIGHT			2	
12		1509338		TRANSISTOR, MPS 6531			1	
13		9008833		SPACER, 3/16 AF x 5/8 LG #4-40 AL			3	
14		<del>9996929</del>		<del>SCREW, 6-32 x 1/4</del>			<del>6</del>	
15		1300432		RES. 3K, 1/4W, 5%			1	
16		9006009-4		SCR SLOTTED HD #4-40 x 1/4 LG SST			6	
17		9107560-01		#22 AWG BUS WIRE			1	

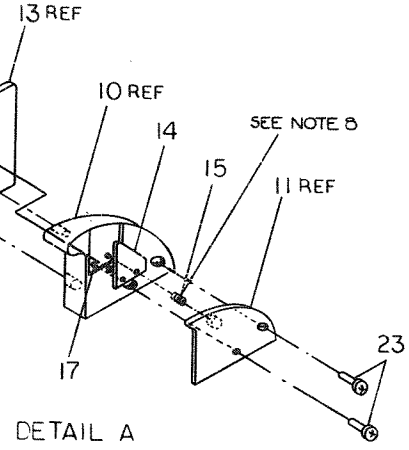
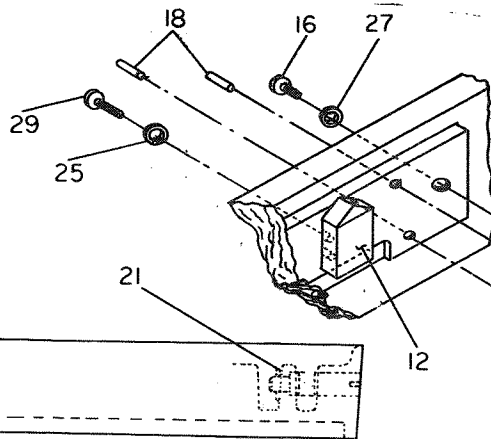
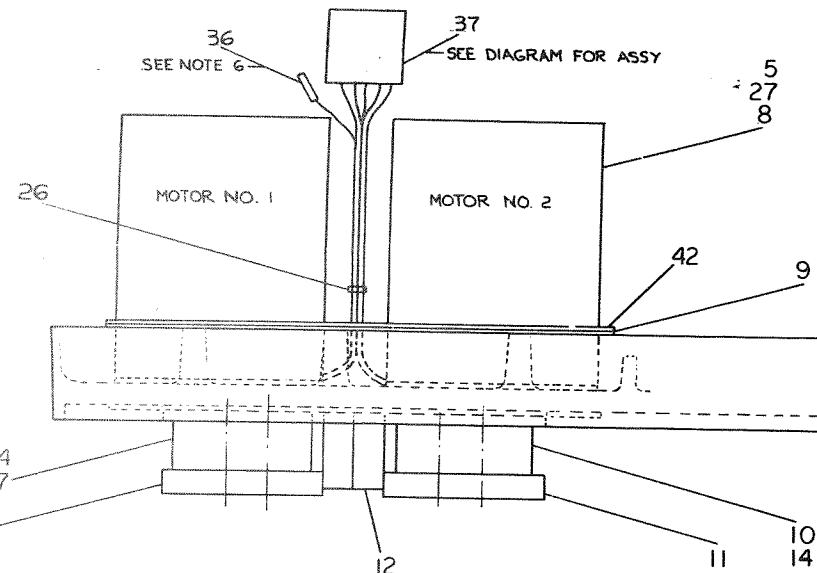
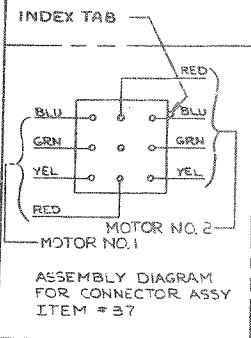
TITLE: TU56 CONTROL BOARD  
 ASSY NO. D-AD-5408500-0-0  
 SHEET 1 OF 2  
 SIZE CODE A PL  
 NUMBER 5408500-0-0  
 REV. ECO NO. D 00003

**DIGITAL EQUIPMENT CORPORATION  
MAYNARD, MASSACHUSETTS  
PARTS LIST**

MADE BY *W. J. ...* CHECKED *D. Wallace* SECTION  
 DATE *Oct. 28, 1969* DATE *1-30-70* DATE *10-1-1969*  
 ENG *E. Sullivan* PROD *P. Sullivan* ISSUED SECT.  
 DATE *3-18-70* DATE *3-18-70*

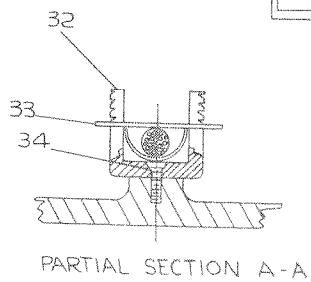
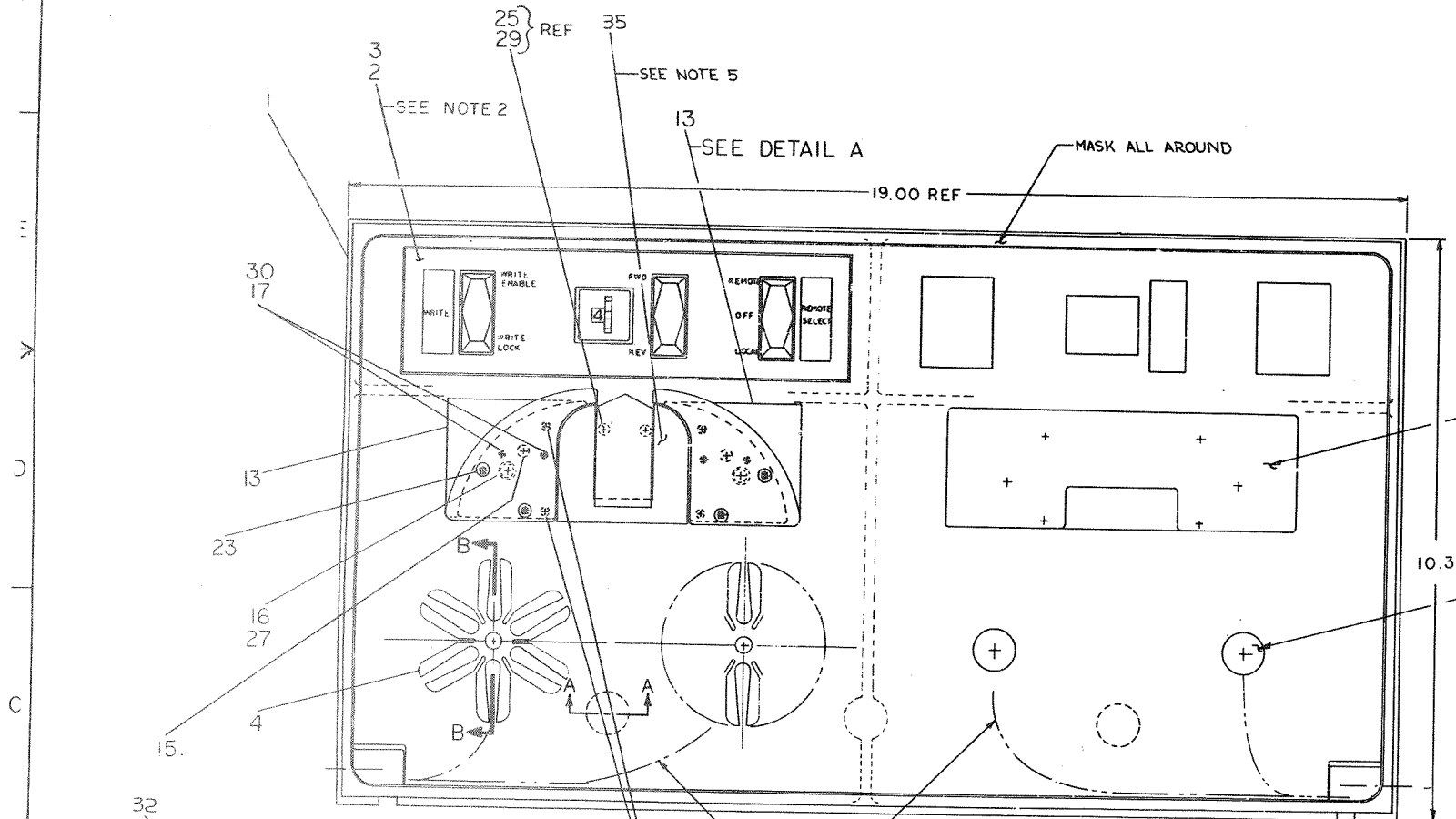
ITEM NO.	CL	DWG NO./PART NO. BASIC	PART NO. VAR.	DESCRIPTION	QTY/VAR	UNIT COST	UNIT QUANTITY	UNIT QUANTITY ISSUED
18		9006632		WASHER INT TOOTH #4			3	
19		1209711-01		BUTTON, ROCKER			3	
20		9008842		DOWEL PIN			3	
21		1100121		DIODE INT748 3.9V 10% 40mw			1	

TITLE: CONTROL PANEL (TU56)  
 ASSY NO. D-AD-5408500-0-0  
 SHEET 2 OF 2  
 SIZE CODE A PL  
 NUMBER 5408500-0-0  
 REV. ECO NO. D 00003

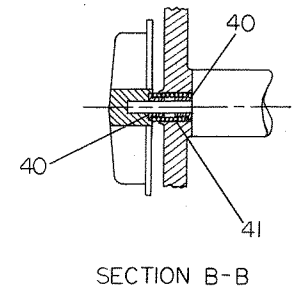


NUMBER	VARIATION
7006320-1	UNIT AS SHOWN
7006320-2	DOUBLE UNIT

- NOTES**
1. POSITION OF ITEM NO. 4 (HUB) MUST BE .017" OUT FROM BOSS ON CASTING. MEASURE WITH GAUGE PART NO. 38.
  2. ASSEMBLE ITEM NO. 2 (OVERLAY) USING ITEM NO. 3 (ADHESIVE).
  3. COAT BOTH SURFACES (REAR SURFACE OF OVERLAY & FRONT SURFACE OF PANEL MTG) & ALLOW A MIN. OF ONE (1) MINUTE DRY TIME BEFORE ASSY. MASK SURFACES AS INDICATED BEFORE APPLYING ADHESIVE TO MTG. PANEL.
  4. ~~BOWEL PINS MUST BE INSERTED WITH TAPERED END FIRST.~~
  5. ASSEMBLE ITEM 35 TO FRONT PANEL USING ITEM 2 (APPLY TO REAR SURFACE OF ITEM 35 ONLY).
  6. CRIMP ITEM 36 TO MOTOR LEADS AS SHOWN. INSERT PINS INTO ITEM 37 (PINS MUST ENTER SIDE WITH SQUARE HOLES ONLY).
  7. DO NOT ASSEMBLE ITEM 20 TO FRONT PANEL UNTIL ITEM 39 IS INTO PLACE SO THAT ITEM 20 WILL GO THRU ITEM 39 AT ASSEMBLY.
  8. APPLY CONTACT CEMENT TO BOTTOM TURN OF ITEM 15 BEFORE INSERTING ITEM 15 INTO ITEM 11.



PHANTOM LINES INDICATES TYPICAL PATTERN ALL WIRES FROM MOTORS MUST FOLLOW



MASK-2 PADS

MASK-4 BOSSES

INDICATES CABLE WIRE FROM ITEM NO. 12 (HEAD)

**CAUTION**  
CHANGE COULD AFFECT U.L. LISTING

TOLERANCES	DECIMALS
.XXX	± .005
.XX	± .02
.X	± .1

REV.	DATE	BY	CHKD.	DESCRIPTION
1	10/24/70	WILLIAMS	WILLIAMS	REVISED TO ADD PART 35
2	11/10/70	WILLIAMS	WILLIAMS	REVISED TO ADD PART 36
3	11/10/70	WILLIAMS	WILLIAMS	REVISED TO ADD PART 37
4	11/10/70	WILLIAMS	WILLIAMS	REVISED TO ADD PART 38
5	11/10/70	WILLIAMS	WILLIAMS	REVISED TO ADD PART 39
6	11/10/70	WILLIAMS	WILLIAMS	REVISED TO ADD PART 40
7	11/10/70	WILLIAMS	WILLIAMS	REVISED TO ADD PART 41
8	11/10/70	WILLIAMS	WILLIAMS	REVISED TO ADD PART 42
9	11/10/70	WILLIAMS	WILLIAMS	REVISED TO ADD PART 43
10	11/10/70	WILLIAMS	WILLIAMS	REVISED TO ADD PART 44
11	11/10/70	WILLIAMS	WILLIAMS	REVISED TO ADD PART 45
12	11/10/70	WILLIAMS	WILLIAMS	REVISED TO ADD PART 46
13	11/10/70	WILLIAMS	WILLIAMS	REVISED TO ADD PART 47
14	11/10/70	WILLIAMS	WILLIAMS	REVISED TO ADD PART 48
15	11/10/70	WILLIAMS	WILLIAMS	REVISED TO ADD PART 49
16	11/10/70	WILLIAMS	WILLIAMS	REVISED TO ADD PART 50
17	11/10/70	WILLIAMS	WILLIAMS	REVISED TO ADD PART 51
18	11/10/70	WILLIAMS	WILLIAMS	REVISED TO ADD PART 52
19	11/10/70	WILLIAMS	WILLIAMS	REVISED TO ADD PART 53
20	11/10/70	WILLIAMS	WILLIAMS	REVISED TO ADD PART 54
21	11/10/70	WILLIAMS	WILLIAMS	REVISED TO ADD PART 55
22	11/10/70	WILLIAMS	WILLIAMS	REVISED TO ADD PART 56
23	11/10/70	WILLIAMS	WILLIAMS	REVISED TO ADD PART 57
24	11/10/70	WILLIAMS	WILLIAMS	REVISED TO ADD PART 58
25	11/10/70	WILLIAMS	WILLIAMS	REVISED TO ADD PART 59
26	11/10/70	WILLIAMS	WILLIAMS	REVISED TO ADD PART 60
27	11/10/70	WILLIAMS	WILLIAMS	REVISED TO ADD PART 61
28	11/10/70	WILLIAMS	WILLIAMS	REVISED TO ADD PART 62
29	11/10/70	WILLIAMS	WILLIAMS	REVISED TO ADD PART 63
30	11/10/70	WILLIAMS	WILLIAMS	REVISED TO ADD PART 64
31	11/10/70	WILLIAMS	WILLIAMS	REVISED TO ADD PART 65
32	11/10/70	WILLIAMS	WILLIAMS	REVISED TO ADD PART 66
33	11/10/70	WILLIAMS	WILLIAMS	REVISED TO ADD PART 67
34	11/10/70	WILLIAMS	WILLIAMS	REVISED TO ADD PART 68
35	11/10/70	WILLIAMS	WILLIAMS	REVISED TO ADD PART 69
36	11/10/70	WILLIAMS	WILLIAMS	REVISED TO ADD PART 70
37	11/10/70	WILLIAMS	WILLIAMS	REVISED TO ADD PART 71
38	11/10/70	WILLIAMS	WILLIAMS	REVISED TO ADD PART 72
39	11/10/70	WILLIAMS	WILLIAMS	REVISED TO ADD PART 73
40	11/10/70	WILLIAMS	WILLIAMS	REVISED TO ADD PART 74
41	11/10/70	WILLIAMS	WILLIAMS	REVISED TO ADD PART 75
42	11/10/70	WILLIAMS	WILLIAMS	REVISED TO ADD PART 76
43	11/10/70	WILLIAMS	WILLIAMS	REVISED TO ADD PART 77
44	11/10/70	WILLIAMS	WILLIAMS	REVISED TO ADD PART 78
45	11/10/70	WILLIAMS	WILLIAMS	REVISED TO ADD PART 79
46	11/10/70	WILLIAMS	WILLIAMS	REVISED TO ADD PART 80
47	11/10/70	WILLIAMS	WILLIAMS	REVISED TO ADD PART 81
48	11/10/70	WILLIAMS	WILLIAMS	REVISED TO ADD PART 82
49	11/10/70	WILLIAMS	WILLIAMS	REVISED TO ADD PART 83
50	11/10/70	WILLIAMS	WILLIAMS	REVISED TO ADD PART 84
51	11/10/70	WILLIAMS	WILLIAMS	REVISED TO ADD PART 85
52	11/10/70	WILLIAMS	WILLIAMS	REVISED TO ADD PART 86
53	11/10/70	WILLIAMS	WILLIAMS	REVISED TO ADD PART 87
54	11/10/70	WILLIAMS	WILLIAMS	REVISED TO ADD PART 88
55	11/10/70	WILLIAMS	WILLIAMS	REVISED TO ADD PART 89
56	11/10/70	WILLIAMS	WILLIAMS	REVISED TO ADD PART 90
57	11/10/70	WILLIAMS	WILLIAMS	REVISED TO ADD PART 91
58	11/10/70	WILLIAMS	WILLIAMS	REVISED TO ADD PART 92
59	11/10/70	WILLIAMS	WILLIAMS	REVISED TO ADD PART 93
60	11/10/70	WILLIAMS	WILLIAMS	REVISED TO ADD PART 94
61	11/10/70	WILLIAMS	WILLIAMS	REVISED TO ADD PART 95
62	11/10/70	WILLIAMS	WILLIAMS	REVISED TO ADD PART 96
63	11/10/70	WILLIAMS	WILLIAMS	REVISED TO ADD PART 97
64	11/10/70	WILLIAMS	WILLIAMS	REVISED TO ADD PART 98
65	11/10/70	WILLIAMS	WILLIAMS	REVISED TO ADD PART 99
66	11/10/70	WILLIAMS	WILLIAMS	REVISED TO ADD PART 100

FIRST USED ON OPTION/MODEL	QTY.	DESCRIPTION	PART NO.	ITEM NO.
TU56				
UNLESS OTHERWISE SPECIFIED DIMENSIONS IN INCHES				
TOLERANCES DECIMALS				
.XXX = ± .005				
.XX = ± .02				
.X = ± .1				
MATERIAL				
NEXT HIGHER ASSY				
SCALE				
SHEET				
DATE				
DRAWN				
CHECKED				
APPROVED				
TITLE				
PANEL FRONT ASSEMBLY				
EQUIPMENT CORPORATION				
EAD7006320-0-0				

DIGITAL EQUIPMENT CORPORATION  
MAYNARD, MASSACHUSETTS

PARTS LIST

MADE BY KEN GULICK  
DATE 6/5/69  
ENG *Cellulose*  
DATE 8-26-69  
CHECKED D. HEALY  
DATE 7/23/69  
PROD *C.R. Thompson*  
DATE 8/26/69  
SECTION 1  
ISSUED SECT. 1

ITEM NO.	DWG NO. / PART NO.	DESCRIPTION	QUANTITY	VARIATION
1	E-MD-7407395-0-0	PANEL MTG (TU56)	1	
2	D-1A-7410968-0-0	PANEL OVERLAY	1	7006320-1
3		ADHESIVE SCOTCH GRIP SPRAY #77	1	
4	C-1A-7407390-0-0	HUB ASSY (6 PT CONTACT)	A/RA/R	
5	9006341-08	SCR SOC HD CAP 10 24 X 1/2 BLK PASS.	2	4
6	C-MD-7407282-2-0	COVER PLATE (L.H.)	8	16
7	C-1A-7407283-2-0	TAPE GUIDE (L.H.)	1	2
8	1209602	MOTOR, TORQUE	1	2
9	D-1A-7006222-0-0	SWITCH CONTROL PANEL ASSY	2	4
10	C-1A-7407283-1-0	TAPE GUIDE (R.H.)	1	2
11	C-MD-7407282-1-0	COVER PLATE (R.H.)	1	2
12	1209691	HEAD ASSY	1	2
13	C-MD-7405136-0-0	REAR CHECK TAPE GUIDE	1	2
14	B-MD-7405114-0-0	WEAR PLATE	2	4
15	1211821	SPR #711-22-X INST SPEC. CO.	2	4
16	9006345-08	SCR SOC HD CAP #10-32 X 3/8 SST	2	4
17	9008132	<del>DOWEL PIN 3/32 DIA X 7/16 LG</del>	4	8
18	9008131	<del>POWER PIN 1/8 DIA X 1/8 LG</del>	4	8
19	B-MD-7405114-2-0	<del>WEAR PLATE (L.H.)</del>	1	2
20	9008130	DOWEL PIN 1/4 DIA X 1 1/4	2	2
21	90-07785	GRIP, EXT SER #5555-37 WALDES 3/8" SHAFT	2	2
22	B-MD-7407400-0-0	PIN, LOCK	2	2

TITLE PANEL FRONT, ASSEMBLY  
ASSY NO. E-AD-7006320-0-0  
SIZE CODE A PL  
NUMBER 7006320-0-0  
REV. P  
ECO NO. TU56-00084  
SHEET 1 OF 2  
DIST. C

DIGITAL EQUIPMENT CORPORATION  
MAYNARD, MASSACHUSETTS

PARTS LIST

MADE BY KEN GULICK  
DATE 6/5/69  
ENG *Cellulose*  
DATE 8-26-69  
CHECKED D. HEALY  
DATE 7/25/69  
PROD *C.R. Thompson*  
DATE 8/26/69  
SECTION 1  
ISSUED SECT. 1

ITEM NO.	DWG NO. / PART NO.	DESCRIPTION	QUANTITY	VARIATION
23	9006331-08	SCR SOC HD CAP 6-32 X 5/8 LG BLK PASS.	4	8
24	<del>C-MD-7405136-1-0</del>	<del>REAR CHECK TAPE GUIDE (L.H.)</del>	1	2
25	90066632	WASH INT TOOTH #4	2	4
26	9007032	TIE WRAP #SST-2-B PANDUIT	A/RA/R	
27	9007651	WASH EXT TOOTH #10 HOLE	10	20
28	9006022-1	SCR, PH HD PAN #6-32 X 3/8 SST	4	8
29	9006014-1	SCR PH HD PAN #4-40 X 5/8 LG SST	2	4
30	9008136	<del>GRIP KING EXT SERIES C-5555-95</del>	4	8
31	9006311	<del>HEX SOC SET SCR #10-32 X 1/4 SST</del>	4	8
32	90-07772-9	CLAMP, CABLE BASE	1	2
33	<del>90-07772-10</del>	<del>CLAMP, CABLE FOR</del>	1	2
34	90-06037-2	SCREW FLAT HEAD #8-32 x 3/8 Lg SST	1	2
35	C-1A-7408008-0-0	FILLER PLATE	1	2
36	1209378	PIN, CONNECTOR	8	16
37	1209351-09	HOUSING, CONNECTOR	1	2
38	C-1A-7408010-0-0	GAUGE, HUB	A/RA/R	
39	<del>C-MD-1209830</del>	ARM, PANEL SUPPORT	2	2
40	1209926	BUSHING, OIL IMPREGNATED BRONZE	4	8
41	1209917	SPRING, COMPRESSION	2	4
42	C-MD-7408287-0-0	GUARD PLATE	1	2
43	90-06024-1	SCR, PH HD PAN #6-32 x 1/2 SST	2	4
44	90-06793	SPACER 3/16AF X 3/16LG #6 HOLE AL	2	4

TITLE PANEL FRONT ASSEMBLY  
ASSY NO. E-AD-7006320-0-0  
SIZE CODE A PL  
NUMBER 7006320-0-0  
REV. P  
ECO NO. TU56-00084  
SHEET 2 OF 2  
DIST. C