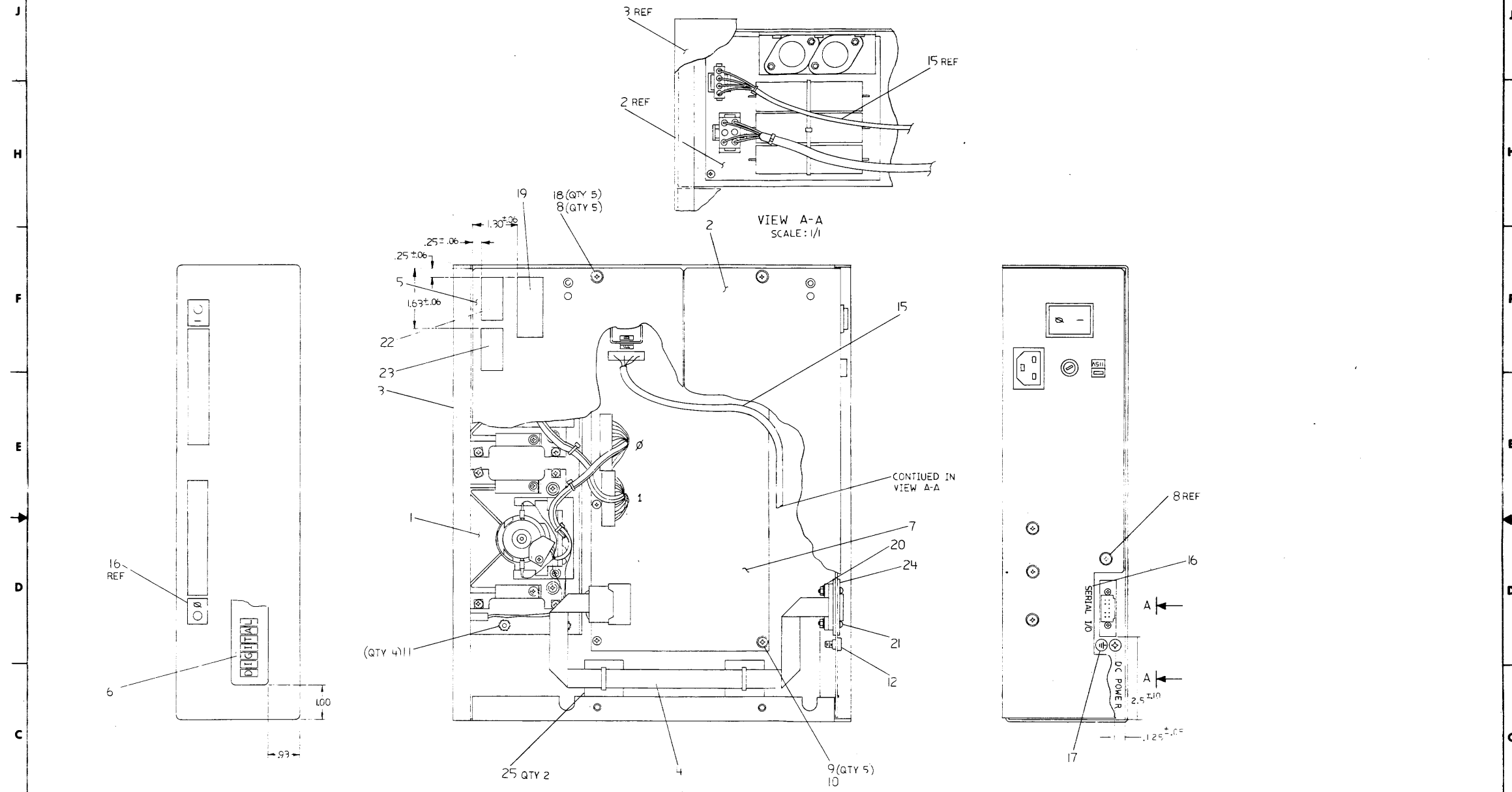


THIS DRAWING AND INFORMATION HEREON ARE THE PROPERTY OF BULLOCK ELECTRONIC CORPORATION AND SHALL NOT BE REPRODUCED OR TRANSMITTED IN ANY FORM OR BY ANY MEANS, ELECTRONIC OR MECHANICAL, INCLUDING PHOTOCOPYING, RECORDING, OR BY ANY INFORMATION STORAGE AND RETRIEVAL SYSTEM, WITHOUT THE WRITTEN PERMISSION OF BULLOCK ELECTRONIC CORPORATION.



INITIALIZE A
 DATE: 10/15/77
 DRAWN BY: P. ALBANO
 CHECKED BY: J. J. RYAN

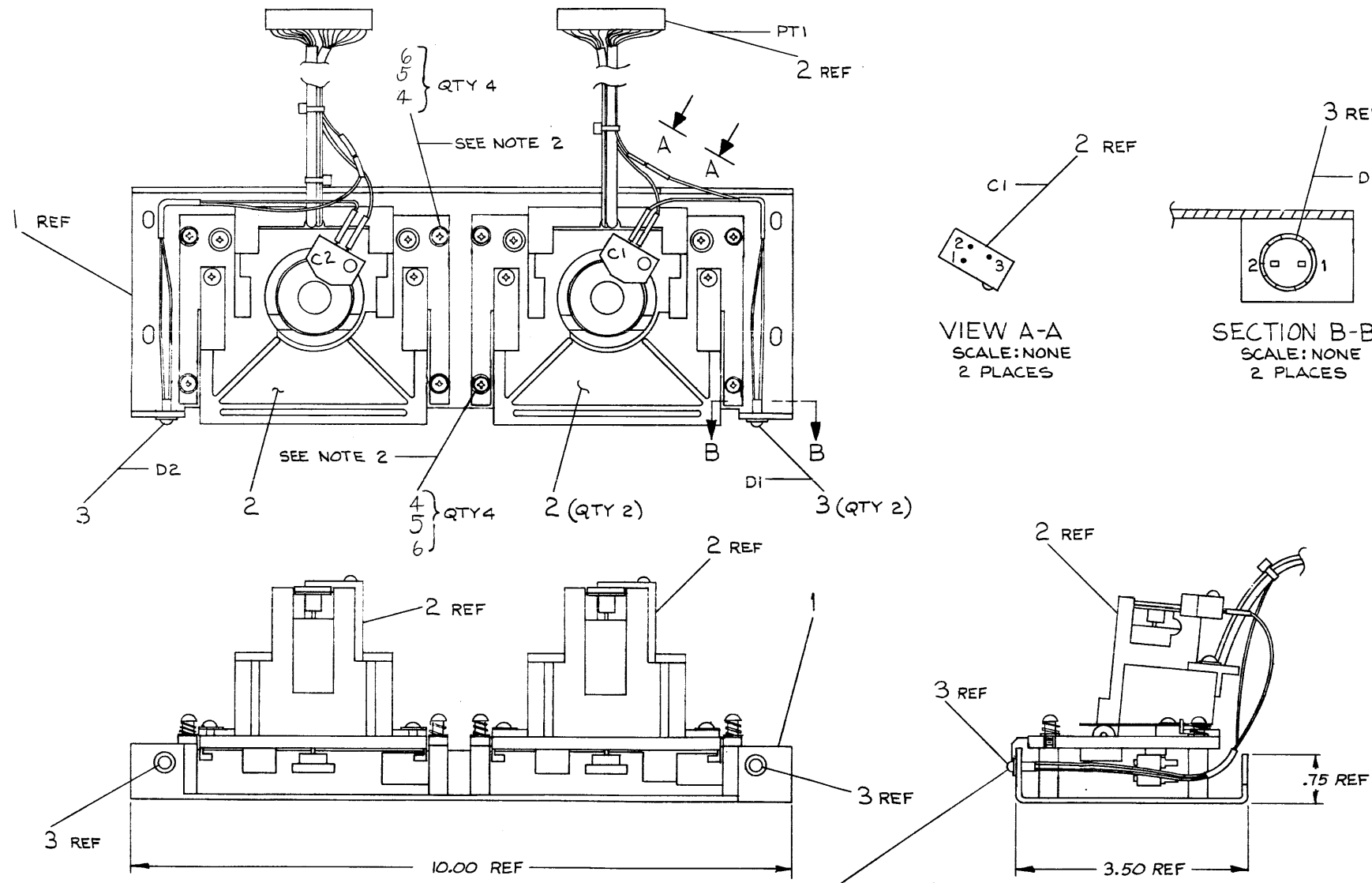
CAUTION: OFF SHEET PARTS LIST
 REFER TO K-PL-TU58-E-0-DBP

DESCRIPTION		QTY	PART NO.	ITEM NO.
UNLESS OTHERWISE SPECIFIED DIMENSIONS ARE IN INCHES				
APPROX	CLASS OF ACCURACY	TYPICAL DIMENSION RANGE		
AS SURF	CHECK ONE	1/2	1/16	1/32
QUALITY	IN	1/4	1/8	1/16
	MEDIUM	1/8	1/16	1/32
	PREFERRED	1/16	1/32	1/64
QUANTITY & VARIATION	MICROINCHES	1.012	1.018	1.024
THIRD ANGLE PROJECTION	DRW. BY: J. J. RYAN	FIRST USED ON: TU58-EA		
REWORKS, REVISIONS AND BREAK SHEET COMMENTS	CHKD. BY: J. J. RYAN	TITLE: POWERED DUAL DRIVE ASSY		
DO NOT SCALE DIMS	PROJ. ENG. DATE: 10/15/77	MATERIAL: SEE PARTS LIST		
	PRICE: 10.00	SCALE: 1/1		
	DO NOT SCALE DIMS	FINISH: NONE		
		SHEET: 1 OF 1		

"THIS DRAWING AND SPECIFICATIONS, HEREIN, ARE THE PROPERTY OF DIGITAL EQUIPMENT CORPORATION AND SHALL NOT BE REPRODUCED OR COPIED OR USED IN WHOLE OR IN PART AS THE BASIS FOR THE MANUFACTURE OR SALE OF ITEMS WITHOUT WRITTEN PERMISSION. COPYRIGHT © 1980, DIGITAL EQUIPMENT CORPORATION"

WIRE TABLE							
ITEM NO	DESCRIPTION	FROM		TO		REMARKS	
		AVG	COLOR	CONNECTION	WITH		CONNECTION
3	26	BRN	D1-1	---	C1-2	---	SEE NOTE #1
			D1-2	---	PT1-8(BLK WIRE)	---	SEE NOTE #1
3	26	BRN	D2-1	---	C2-2	---	SEE NOTE #1
			D2-2	---	PT2-8(BLK WIRE)	---	SEE NOTE #1

- NOTES:
- DISCONNECT EXISTING BRN WIRE FROM C1-2 & C2-2
 - TORQUE VALUES ON DRIVES TO BE 5 IN./LBS. ON ITEM #6



CAUTION: OFF SHEET PARTS LIST EXISTS K-PL-7017567-0-DBP

QUANTITY & VARIATION	DESCRIPTION	DWG./PART NO.	ITEM NO.																													
				UNLESS OTHERWISE SPECIFIED DIMENSIONS ARE IN INCHES																												
<table border="1"> <tr> <td>ANGLES</td> <td>CLASS OF ACCURACY</td> <td colspan="5">NOMINAL DIMENSION RANGE INCHES</td> </tr> <tr> <td>30° 30'</td> <td>CHECK ONE</td> <td>OVER 0 TO 0.25</td> <td>OVER 0.25 TO 0.50</td> <td>OVER 0.50 TO 1.25</td> <td>OVER 1.25 TO 4.00</td> <td>OVER 4.00 TO 80.0</td> </tr> <tr> <td>SURFACE QUALITY IN</td> <td>MEDIUM</td> <td>±.004</td> <td>±.008</td> <td>±.012</td> <td>±.018</td> <td>±.024</td> </tr> <tr> <td>MICROWELDS</td> <td>PREFERRED</td> <td>±.012</td> <td>±.018</td> <td>±.025</td> <td>±.04</td> <td>±.06</td> </tr> </table>	ANGLES	CLASS OF ACCURACY	NOMINAL DIMENSION RANGE INCHES					30° 30'	CHECK ONE	OVER 0 TO 0.25	OVER 0.25 TO 0.50	OVER 0.50 TO 1.25	OVER 1.25 TO 4.00	OVER 4.00 TO 80.0	SURFACE QUALITY IN	MEDIUM	±.004	±.008	±.012	±.018	±.024	MICROWELDS	PREFERRED	±.012	±.018	±.025	±.04	±.06	DRN: James Sigan (17 Nov 79)	FIRST USED ON	TU58-VX	Digital
	ANGLES	CLASS OF ACCURACY	NOMINAL DIMENSION RANGE INCHES																													
30° 30'	CHECK ONE	OVER 0 TO 0.25	OVER 0.25 TO 0.50	OVER 0.50 TO 1.25	OVER 1.25 TO 4.00	OVER 4.00 TO 80.0																										
SURFACE QUALITY IN	MEDIUM	±.004	±.008	±.012	±.018	±.024																										
MICROWELDS	PREFERRED	±.012	±.018	±.025	±.04	±.06																										
<table border="1"> <tr> <td>REMOVE BURRS AND BREAK SHARP CORNERS</td> <td>DO NOT SCALE DWG</td> <td>MATERIAL</td> <td>SEE PARTS LIST</td> <td>FINISH</td> <td>NONE</td> </tr> </table>	REMOVE BURRS AND BREAK SHARP CORNERS	DO NOT SCALE DWG	MATERIAL	SEE PARTS LIST	FINISH	NONE	<table border="1"> <tr> <td>CHK'D: [Signature]</td> <td>ENG: [Signature]</td> <td>PROJ: [Signature]</td> <td>PROB: [Signature]</td> </tr> </table>	CHK'D: [Signature]	ENG: [Signature]	PROJ: [Signature]	PROB: [Signature]	TITLE		TAPE DRIVE ASSEMBLY																		
REMOVE BURRS AND BREAK SHARP CORNERS	DO NOT SCALE DWG	MATERIAL	SEE PARTS LIST	FINISH	NONE																											
CHK'D: [Signature]	ENG: [Signature]	PROJ: [Signature]	PROB: [Signature]																													
NEXT HIGHER ASSY.		SIZE	CODE	NUMBER	REV.																											
SCALE NONE		D	AD	7017567-0-0	A																											
SHEET		OF	1	DIST.																												

REVISIONS
CHANGE NO. REV.
INITIALIZE A

LINE ITEM	DOCUMENT NUMBER	PART NUMBER	DESCRIPTION	QTY PER VARIATION	REFERENCE DESIGNATOR
1	1	D-IA-7423305-0-0	7423305-00	PLATE,TAPE DRIVE	1
2	2	D-AD-7015510-0-0	7015510-00	CARTRIDGE DRIVE	2
3	3	B-IA-7017543-0-0	7017543-00	L.E.D. ASSY.	2
4	4		7424101-00	WASHER	8
5	5		1217653-00	SPRING, COMPRESSION .234 OD X .3	8
6	6		7424084-00	SCREW, SHOULDER	8

REVISION HISTORY			BASIC PART NO: 7017567			DRN: JAMES SICARD			DATE: 28-NOV-79			DIGITAL			
ENG	ECO NUMBER	REV	SECTION A OF A			CHK'D: GARY FLANDERS			DATE: 13-DEC-79			TITLE PARTS LIST			
	INITIAL	A	SECTION, VARIATION INDEX			DES. ENG: J. WALLS			DATE: 21-JAN-80			TAPE DRIVE ASSEMBLY			
			[A]	00		RESP. ENG.: J. WALLS			DATE: 07-JAN-80			DOCUMENT NUMBER			
			[B]			MFG. ENG.: JOHN LABATE			DATE: 26-MAR-80			SIZE	CODE	NUMBER	REV
			[C]			ASSEMBLY NUMBER:			TOP DOCUMENT NUMBER:			K	PL	7017567-0-DBP	A
			[D]			D-AD-7017567-0-0			E-UA-TU58-VX-0			FILE NAME: 21473A.PLS			EDIT #
			[E]												2
			[F]												
			[G]												
			[H]												
			[I]												
			[J]												
			[K]												
			[L]												
			[M]												
			[N]												

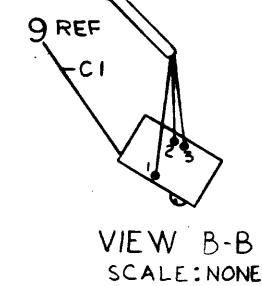
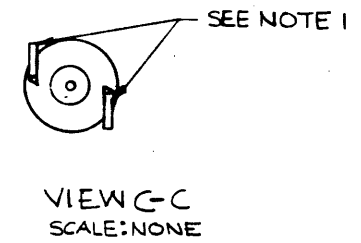
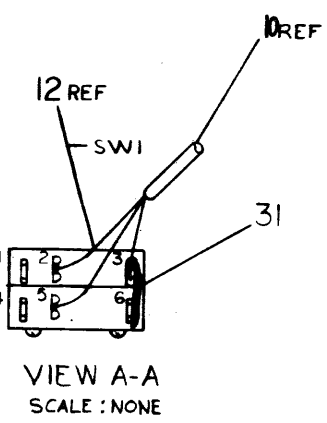
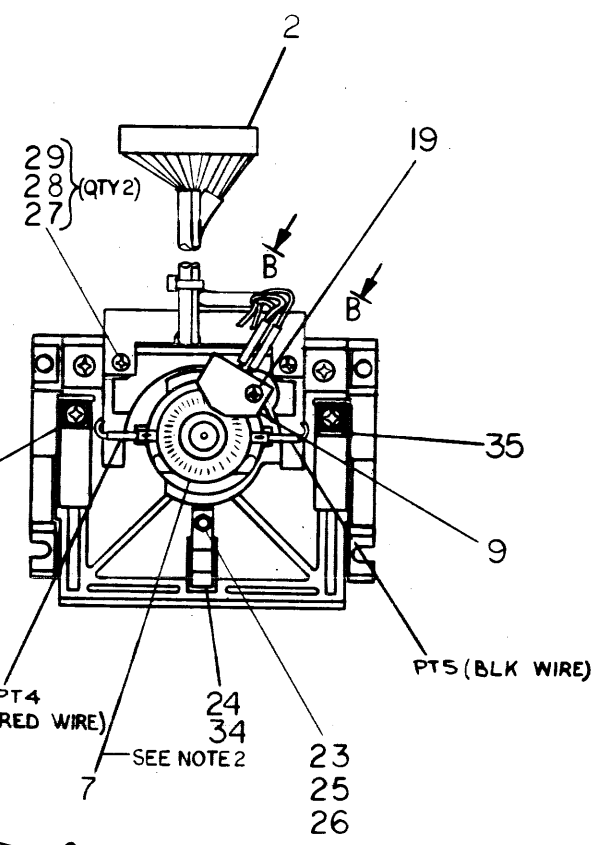
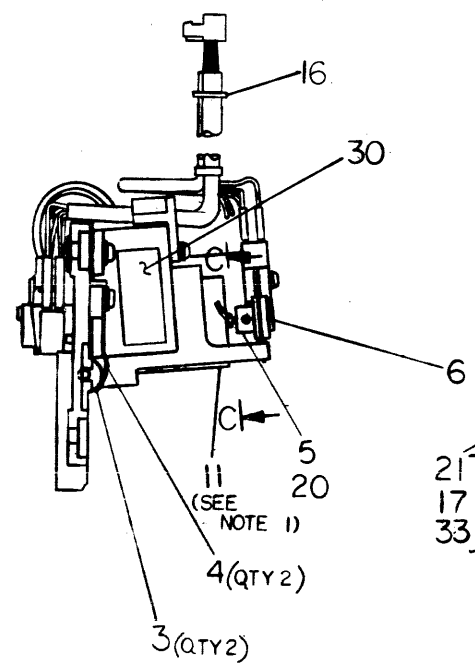
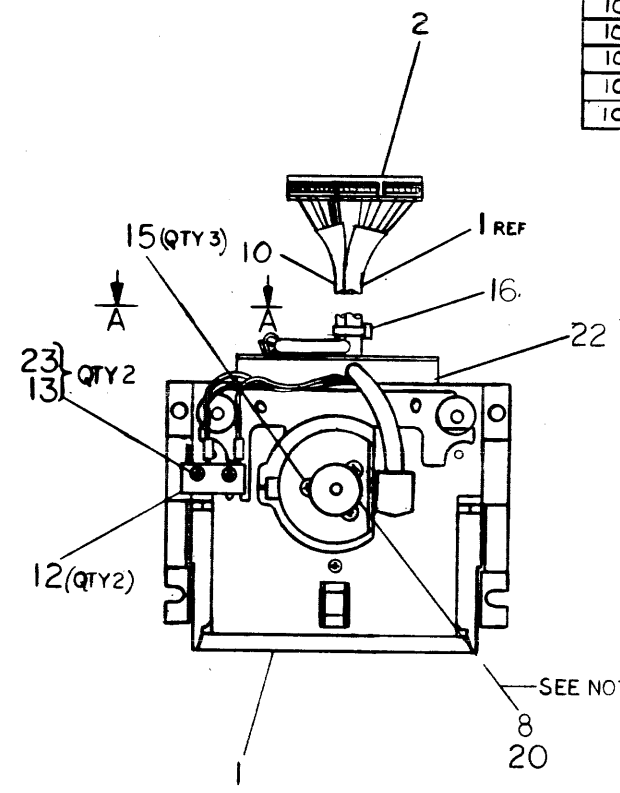
"THIS DRAWING AND SPECIFICATIONS HEREIN, ARE THE PROPERTY OF DIGITAL EQUIPMENT CORPORATION AND SHALL NOT BE REPRODUCED OR COPIED OR USED IN WHOLE OR IN PART AS THE BASIS FOR THE MANUFACTURE OR SALE OF ITEMS WITHOUT WRITTEN PERMISSION.

COPYRIGHT (C) 1980, DIGITAL EQUIPMENT CORPORATION "

WIRE TABLE							
ITEM NO	AWG	COLOR	CONN	WITH	CONN	WITH	REMARKS
10	24	YEL	PT-2	---	SWI-5	---	
10	24	GRY	PT-1	---	SWI-2	---	
10	24	VIO	PT-3	---	SWI-3	---	
31	22	---	SW-6	SOLD	SWI-3	SOLD	BUS WIRE
10	24	GRN	PT-6	---	CI-3	---	
10	24	BRN	PT-8	---	CI-2	---	
10	24	BLU	PT-7	---	CI-1	---	
10	24	BLK	PT-5	---	MOTOR-	---	
10	24	RED	PT-4	---	MOTOR+	---	TWISTED PAIR

- ASSEMBLE ITEM*5,6 & 9 USING $5 \pm .5$ IN LBS TORQUE.
- CARTRIDGE WITHDRAWAL FORCE SHALL BE A MAXIMUM OF 4.8 LBS. AND WHEN AN EXCESS FORCE OF 1 LB. IS APPLIED TO THE DRIVE ROLLER (OUTWARD) AND IS REMOVED, THE CARTRIDGE SHALL STILL BE AGAINST THE DRIVE REFERENCE STOPS.
- HEAD SKEW TO BE WITHIN $6' \pm 0'6''$ AFTER FINAL ASSY.

- NOTES:
- MOTOR TO BE ROTATED TO PROVIDE EASIEST ACCESS TO TERMINALS PT4, PT5. MOTOR LEADS MAY BE BENT AS SHOWN IF NECESSARY TO CLEAR MOTOR MOUNT.
 - CODE WHEEL ITEM #7 MUST ROTATE FREELY WITHOUT RUBBING IN SLOT IN OPTICAL SENSOR ITEM #9. TIGHTEN ITEM #20 TO $3.5 \pm .5$ IN LBS.
 - SET DRIVE ROLLER, ITEM #8, TO BE FLUSH WITH END OF MOTOR SHAFT ITEM #11. TIGHTEN ITEM #20 TO $3.5 \pm .5$ IN LBS.
 - TIGHTEN ITEMS 13 & 25 TO $2.0 \pm .5$ IN LBS.
 - TIGHTEN ITEMS 15, 17, 27 TO $3.5 \pm .5$ IN LBS.
 - TIGHTEN ITEM 21 TO $5 \pm .5$ IN LBS. WHEN CARTRIDGE IS INSERTED INTO DRIVE, THE FORCE ON THE DRIVE ROLLER (ITEM 8) IS TO BE $1 \text{ LB} \pm .1''$.



CAUTION: OFF SHEET PARTS LIST K-PL-7015510-0-DBP

7015510-M-001 A	D. WARREN	9/20/77
7015510-M-002 B	D. WARREN	9/20/77
7015510-M-003 C	D. WARREN	9/20/77
7015510-M-004 D	D. WARREN	9/20/77
7015510-M-005 E	D. WARREN	9/20/77

DESCRIPTION	QUANTITY	UNIT	REVISION
CLASS OF PART			
QUANTITY & VARIATION			
DESCRIPTION	QUANTITY	UNIT	REVISION
7015510-M-001 A	1	EA	1
7015510-M-002 B	1	EA	1
7015510-M-003 C	1	EA	1
7015510-M-004 D	1	EA	1
7015510-M-005 E	1	EA	1
7015510-M-006 F	1	EA	1
7015510-M-007 G	1	EA	1
7015510-M-008 H	1	EA	1
7015510-M-009 I	1	EA	1
7015510-M-010 J	1	EA	1
7015510-M-011 K	1	EA	1
7015510-M-012 L	1	EA	1
7015510-M-013 M	1	EA	1
7015510-M-014 N	1	EA	1
7015510-M-015 O	1	EA	1
7015510-M-016 P	1	EA	1
7015510-M-017 Q	1	EA	1
7015510-M-018 R	1	EA	1
7015510-M-019 S	1	EA	1
7015510-M-020 T	1	EA	1
7015510-M-021 U	1	EA	1
7015510-M-022 V	1	EA	1
7015510-M-023 W	1	EA	1
7015510-M-024 X	1	EA	1
7015510-M-025 Y	1	EA	1
7015510-M-026 Z	1	EA	1
7015510-M-027 AA	1	EA	1
7015510-M-028 AB	1	EA	1
7015510-M-029 AC	1	EA	1
7015510-M-030 AD	1	EA	1
7015510-M-031 AE	1	EA	1
7015510-M-032 AF	1	EA	1
7015510-M-033 AG	1	EA	1
7015510-M-034 AH	1	EA	1
7015510-M-035 AI	1	EA	1
7015510-M-036 AJ	1	EA	1
7015510-M-037 AK	1	EA	1
7015510-M-038 AL	1	EA	1
7015510-M-039 AM	1	EA	1
7015510-M-040 AN	1	EA	1
7015510-M-041 AO	1	EA	1
7015510-M-042 AP	1	EA	1
7015510-M-043 AQ	1	EA	1
7015510-M-044 AR	1	EA	1
7015510-M-045 AS	1	EA	1
7015510-M-046 AT	1	EA	1
7015510-M-047 AU	1	EA	1
7015510-M-048 AV	1	EA	1
7015510-M-049 AW	1	EA	1
7015510-M-050 AX	1	EA	1
7015510-M-051 AY	1	EA	1
7015510-M-052 AZ	1	EA	1
7015510-M-053 BA	1	EA	1
7015510-M-054 BB	1	EA	1
7015510-M-055 BC	1	EA	1
7015510-M-056 BD	1	EA	1
7015510-M-057 BE	1	EA	1
7015510-M-058 BF	1	EA	1
7015510-M-059 BG	1	EA	1
7015510-M-060 BH	1	EA	1
7015510-M-061 BI	1	EA	1
7015510-M-062 BJ	1	EA	1
7015510-M-063 BK	1	EA	1
7015510-M-064 BL	1	EA	1
7015510-M-065 BM	1	EA	1
7015510-M-066 BN	1	EA	1
7015510-M-067 BO	1	EA	1
7015510-M-068 BP	1	EA	1
7015510-M-069 BQ	1	EA	1
7015510-M-070 BR	1	EA	1
7015510-M-071 BS	1	EA	1
7015510-M-072 BT	1	EA	1
7015510-M-073 BU	1	EA	1
7015510-M-074 BV	1	EA	1
7015510-M-075 BU	1	EA	1
7015510-M-076 BV	1	EA	1
7015510-M-077 BW	1	EA	1
7015510-M-078 BX	1	EA	1
7015510-M-079 BY	1	EA	1
7015510-M-080 BZ	1	EA	1
7015510-M-081 CA	1	EA	1
7015510-M-082 CB	1	EA	1
7015510-M-083 CC	1	EA	1
7015510-M-084 CD	1	EA	1
7015510-M-085 CE	1	EA	1
7015510-M-086 CF	1	EA	1
7015510-M-087 CG	1	EA	1
7015510-M-088 CH	1	EA	1
7015510-M-089 CI	1	EA	1
7015510-M-090 CJ	1	EA	1
7015510-M-091 CK	1	EA	1
7015510-M-092 CL	1	EA	1
7015510-M-093 CM	1	EA	1
7015510-M-094 CN	1	EA	1
7015510-M-095 CO	1	EA	1
7015510-M-096 CP	1	EA	1
7015510-M-097 CQ	1	EA	1
7015510-M-098 CR	1	EA	1
7015510-M-099 CS	1	EA	1
7015510-M-100 CT	1	EA	1

THIS DRAWING AND SPECIFICATIONS, HEREIN, ARE THE PROPERTY OF DIGITAL EQUIPMENT CORPORATION AND SHALL NOT BE REPRODUCED OR COPIED OR USED IN WHOLE OR IN PART AS THE BASIS FOR THE MANUFACTURE OR SALE OF ITEMS WITHOUT WRITTEN PERMISSION. DIGITAL EQUIPMENT CORPORATION. COPYRIGHT ©

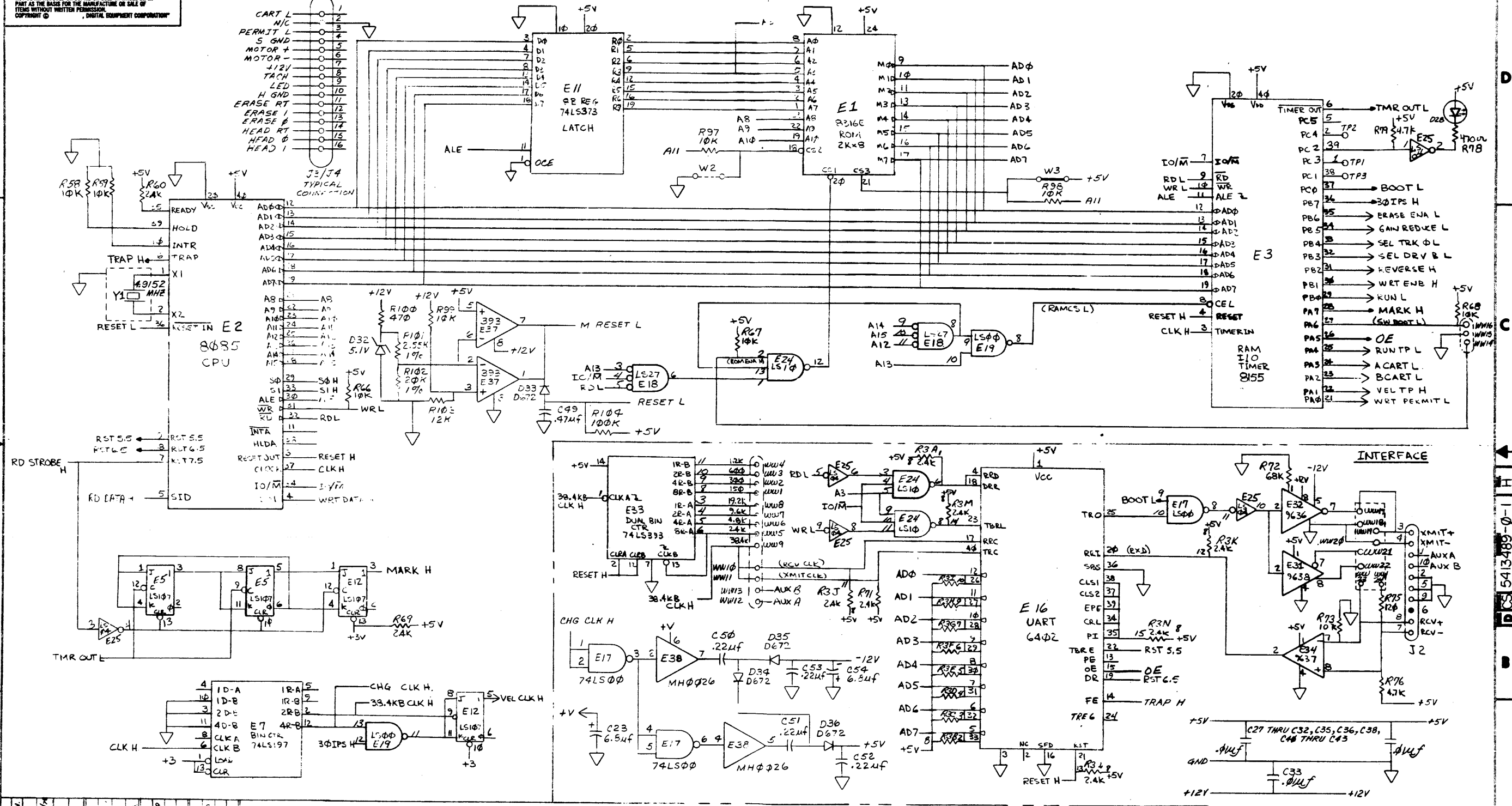
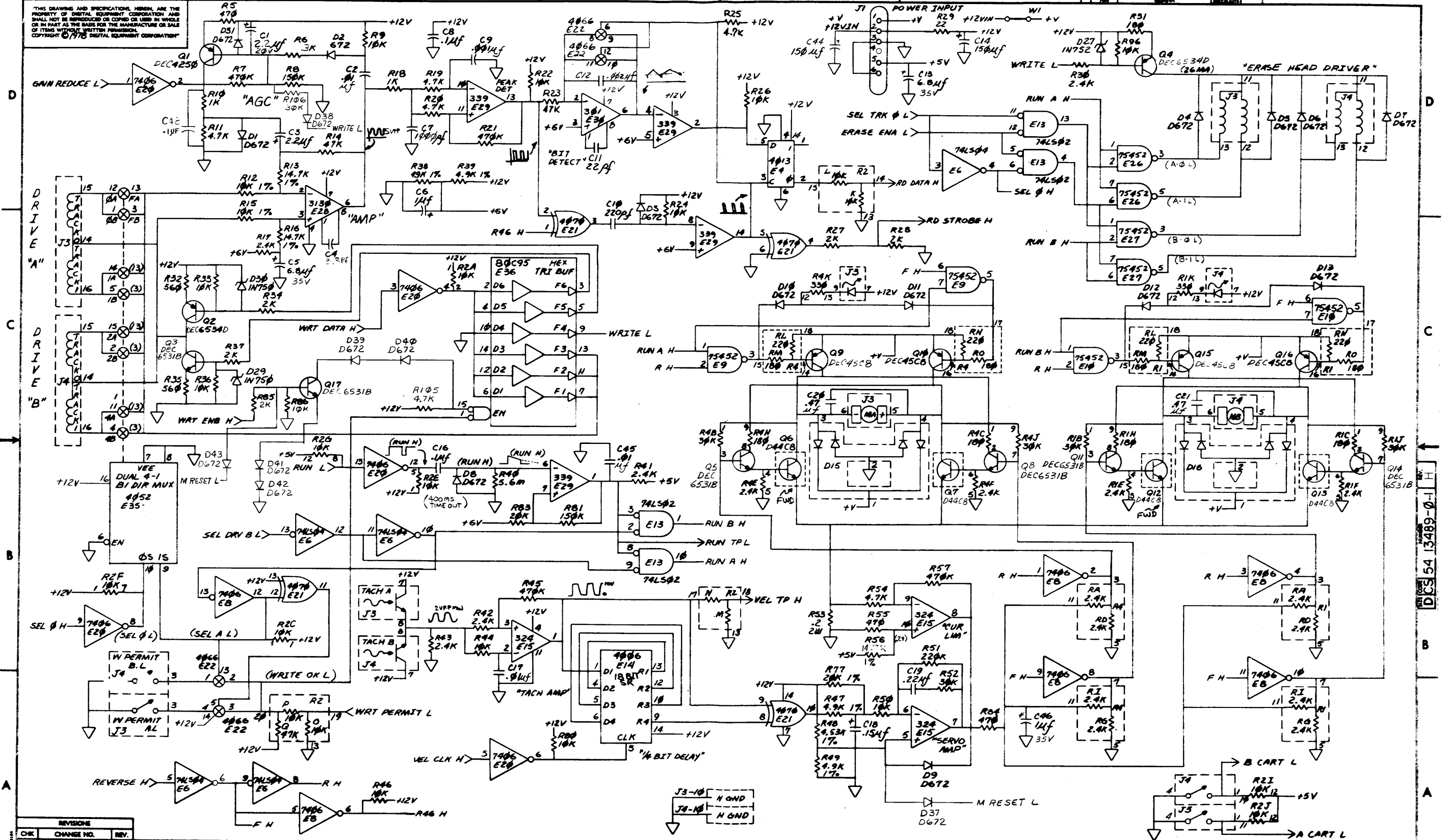


Table with 4 columns: REVISIONS, CHANGE NO., DATE, and NAME. It lists several revisions of the design, including the original design and subsequent changes.

Table with 4 columns: DRN. M. LEIS, CHK'D. M. LEIS, ENG. ROSE/LEIS, and PROD. [Name]. It includes fields for 'FIRST USED ON' (TU58), 'TITLE' (TU58 ELECTRONICS), 'SERIAL' number, 'NEXT HIGHER ASSY.', 'SCALE', and 'SHEET' information.

THIS DRAWING AND SPECIFICATIONS HEREIN ARE THE PROPERTY OF DIGITAL EQUIPMENT CORPORATION AND SHALL NOT BE REPRODUCED OR COPIED OR USED IN WHOLE OR IN PART AS THE BASIS FOR THE MANUFACTURE OR SALE OF ITEMS WITHOUT WRITTEN PERMISSION. COPYRIGHT © 1975 DIGITAL EQUIPMENT CORPORATION



REVISIONS		
CHK	CHANGE NO.	REV.

TITLE	TU58 ELECTRONICS:	SIZE CODE	D CS	NUMBER	54 13489-0-1	REV.	H
SCALE	1/1	SHEET	2 OF 2	DIST.			

LINE	ITEM	DOCUMENT NUMBER	PART NUMBER	DESCRIPTION	QTY PER VARIATION	REFERENCE DESIGNATOR
					00	
1	1		5013488-00	TU58 ELECTRONIC SERIAL	1	
2	2		1215816-00	HEADER.100 15POS STRAIGHT	2	J3,J4
3	3		1000021-00	220.0 MMF 100V 5%200PPM MICA	1	C10
4	4		1000023-00	*** THIS ITEM IS NOT USED ***	-	
5	5		1010978-36	.1 MFD 50V 10% CER	3	C8,C16,C47
6	6		1000042-00	1000.0 MMF 100V 5%200PPM MICA	2	C9,C7
7	7		1001610-00	.01 MFD 50V +80-20% 25U CER	17	C2,C17,C27-C33,C35,C36,C38,C40,
						CONT C41,C42,C43,C45
8	8		1001776-00	1 MFD 35V 10% S.TANT	2	C6,C46
9	9		1002315-00	2000.0 MMF 500V 5%200PPM MICA	1	C12
10	10		1013466-21	3.3 MMF 50V+- .5PF CER	1	C4
11	11		1002431-00	2.2MFD 35V 10% S.TANT	2	C1,C3
12	12		1005306-00	6.8MFD 35V 10% S.TANT	4	C5,C13,C23,C54
13	13		1005334-00	*** THIS ITEM IS NOT USED ***	-	
14	14		1005820-00	22.0 MMF 100V 5%200PPM MICA	1	C11
15	15		1010978-40	.22 MFD 50V 10% CER	1	C19
16	16		1011895-00	.15 MFD 35V 10% S.TANT	1	C18
17	17		1012312-00	*** THIS ITEM IS NOT USED ***	-	
18	18		1100101-00	*** THIS ITEM IS NOT USED ***	-	
19	19		1102808-00	1N 752A VZ= 5.6 5% .40W	1	D27
20	20		1105275-00	D 672 TR= 15NS PIV= 60V SI	25	D1-D13,D31,D33-D43
21	21		1110324-00	LED 1MCD@10MA PIV=3	1	D28
22	22		1115369-00	VM 18 PIV=100 I=1A	2	D15,D16
23	23		1213506-04	HEADER 10POS RT ANGLE W/3 SI	1	J2
24	24		1212385-04	SOCKET 24PIN IC	1	XE1
25	25	USED FOR Q7 & Q12	1213071-06	INSULATOR,RUBBER SILICONE	2	
26	26		1213113-01	*** THIS ITEM IS NOT USED ***	-	
27	27		1213418-01	HEAT SINK,VERTICLE MNT,ALUMINUM	2	
28	28		1300247-00	120.0 .25 W 5.0 % CC	1	R75
29	29		1300274-00	*** THIS ITEM IS NOT USED ***	-	

REVISION HISTORY		BASIC PART NO: 5413489		DRN: DAN MUTNANSKY		DATE: 22-MAY-78		D I G I T A L	
ENG	ECO NUMBER	REV	SECTION A OF A	CHK'D:		DATE:		TITLE	PARTS LIST
---	INIT	C	SECTION VARIATION INDEX	CHK'D:	P. BOSSMAN	DATE:	6-JUNE-78	SERIAL	TU58
IPB	5413489-ML001	D	[A] 00						
IM.L	5413489-ML003	E	[B]						
IML	5413489-ML004	F	[C]	DES.ENG:	MIKE LEIS	DATE:	22-MAY-78		
ID.M	5413489-ML006	H	[D]					DOCUMENT NUMBER	
			[E]					SIZE	CODE
			[F]	RESP.ENG.:	M. LEIS	DATE:	6-JUNE-78	NUMBER	REV
			[G]						
			[H]						
			[I]	MFG.ENG.:	P. BARTON	DATE:	6-JUNE-78	K	PL
			[J]					5413489-0-DBP	H
			[K]						
			[L]	ASSEMBLY NUMBER:		TOP DOCUMENT NUMBER:		FILE NAME:	EDIT #
			[M]	E-UA-5413489-0-0		TU58		Z0582H.PLS	37
			[N]						

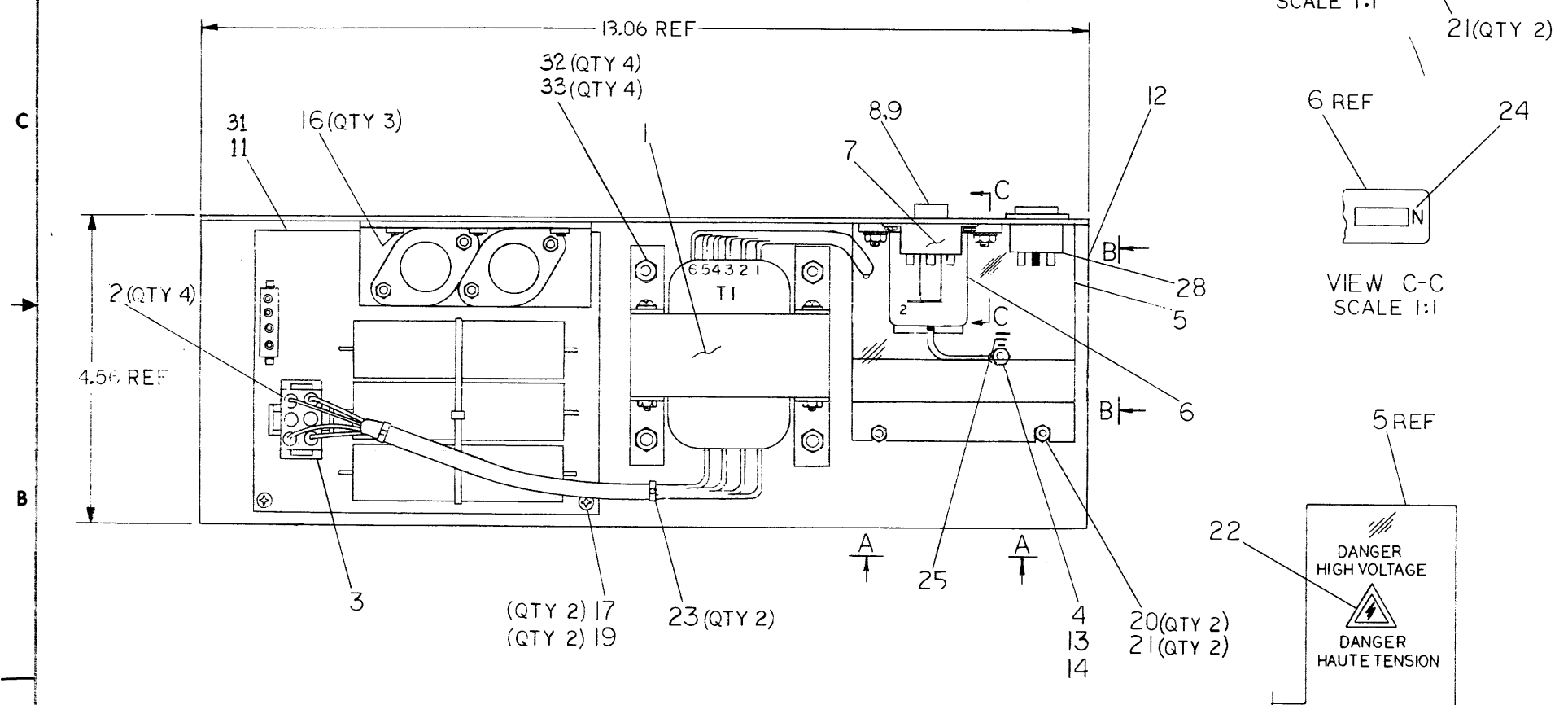
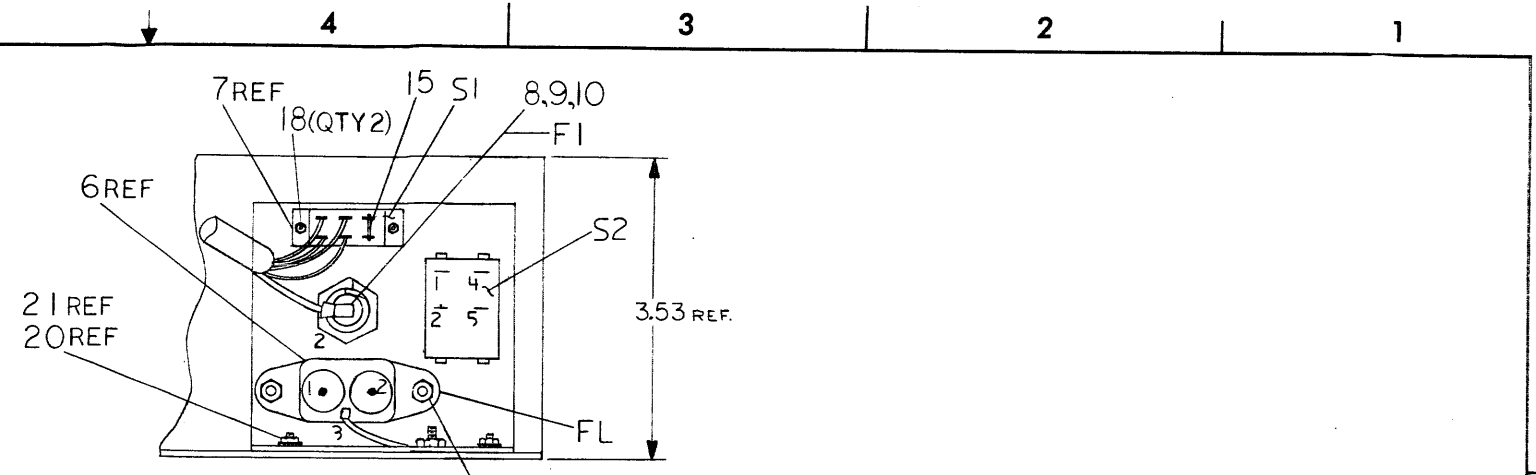
"THIS DRAWING AND SPECIFICATIONS HEREIN, ARE THE PROPERTY OF DIGITAL EQUIPMENT CORPORATION AND SHALL NOT BE REPRODUCED OR COPIED OR USED IN WHOLE OR IN PART AS THE BASIS FOR THE MANUFACTURE OR SALE OF ITEMS WITHOUT WRITTEN PERMISSION. COPYRIGHT (C) 1980, DIGITAL EQUIPMENT CORPORATION"

LINE ITEM	DOCUMENT NUMBER	PART NUMBER	DESCRIPTION	QTY PER VARIATION 00	REFERENCE DESIGNATOR	
76	76	1914451-00	74LS393 COUNTER,BINARY,4BIT	1	E33	
77	77	1914466-00	3130E OP AMP MOS/FET IN,CM	1	E28	
78	78	1915219-00	LS373 FF-D OCTAL-TRANSPARE	1	E11	
79	79	1915415-00	9636 DRIVER,DUAL,EIA RS-	1	E32	
80	80	1915416-00	9637 RECEIVER,DUAL,RS-42	1	E34	
81	81	1915417-00	9638 DRIVER,DUAL,EIA RS-	1	E31	
82	82	2113605-00	4006B SHIFT REG,18 STAGE	1	E14	
83	83	2113609-00	4013B FF-D DUAL W/SET/RESE	1	E4	
84	84	2113630-00	4052B MULTIPLEXER 4CHAN DI	1	E35	
85	85	2113632-00	4066B BILATERAL SWITCH-QUA	1	E22	
86	86	2113634-00	4070B X-OR GATE-QUAD CMOS	1	E21	
87	87	2113937-00	UART 125K BUAD	1	E16	
88	88	2114663-00	MM 80C95 BUFFER-GATE-HEX TRIS	1	E36	
89	89	2114963-00	UP,8-BIT NMOS	1	E2	
90	90	2114964-00	RAM 2048 MOSJ-STATIC	1	E3	
91	91	23089E2-00	E2-01	1	E1	
92	92	1212619-07	HEADER.156 6POS STRAIGHT	1	J1	
93	93	9009185-00	JUMPER, WIRE, INSULATED, BLACK B	2	W1,W3	
94	94	USED FOR Q7 & Q12	9010057-00	WASHER, INSULATING SHOULDER FOR	2	
95	95	1215816-01	HEADER.100 3POS STRAIGHT	1		
96	96	1215816-02	HEADER.100 13POS STRAIGHT	1		
97	97	1215816-03	HEADER.100 8POS STRAIGHT	1		
98	98	9006011-01	SCREW,PAN,PHIL 4-40X 3/8 SS	2		
99	99	9006557-00	NUT,KEP , 4-40X 1/4 AF	2		
100	100	1100124-00	1N 750A VZ= 4.7 5% .40W P	2	D29,D30	
101	101	1301890-00	560.0 .25 W 5.0 % CC	2	R32,R35	
102	102	1313840-00	4.53 K .25 W 1.0 % RN55D-F10	1	R48	
103	103	9105740-55	WIRE(WRAP)30AWG UL1423	A/R		
104	104	1012084-03	150 MFD 15V +75-10% AL EL	2	C44,C14	
105	105	9107256-11	*** THIS ITEM IS NOT USED ***	-		
106	106	1910741-01	7406N BUFFER,HEX	1	E20	
107	107	5414232-00	*** THIS ITEM IS NOT USED ***	-		
108	108	1310633-00	2.55 K .25 W 1.0 % RN55D-F10	1	R101	
109	109	1300488-00	12.0 K .25 W 5.0 % CC	1	R103	
110	110	1302466-00	100.0 K .25 W 5.0 % CC	1	R104	
111	111	1105871-00	1/4M5.1AZ1 = 5.1 1% .25W N	1	D32	
112	112	1914156-00	LM 393 VOLT.COMPARATOR DUAL	1	E37	
113	113	1912098-00	0026 DRIVER,MOS CLOCK,2	1	E38	
114	114	1010274-01	.22 MFD 50V +80-20% Z5U CER	4	C50-C53	
115	115	1010279-00	.47 MFD 25V 20% CER	3	C20,C21,C49	

D	I	G	I	T	A	L	TITLE	SECTION A OF A	SIZE	CODE	DOCUMENT NUMBER	REV
							SERIAL 1U58		K	PL	5413489-0-00P	H

THIS DRAWING AND SPECIFICATIONS, HEREIN, ARE THE PROPERTY OF DIGITAL EQUIPMENT CORPORATION AND SHALL NOT BE REPRODUCED OR COPIED OR USED IN WHOLE OR IN PART AS THE BASIS FOR THE MANUFACTURE OR SALE OF ITEMS WITHOUT WRITTEN PERMISSION.
 COPYRIGHT © 1980
 DIGITAL EQUIPMENT CORPORATION

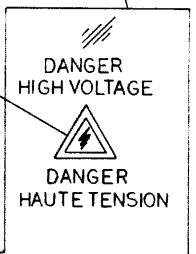
WIRE TABLE						
ITEM NO	DESCRIPTION	FROM	TO	REMARKS		
1	18 BLUE	TI-7	PI-6	3&2 9.37 LG		
1	18 BLUE	TI-8	PI-4	3&2 9.37 LG		
1	18 BLU/BLK	TI-9	PI-3	3&2 10.00 LG		
1	18 BLU/BLK	TI-10	PI-1	3&2 10.00 LG		
26	GRN/YEL	FLI-3	SOLDER GRN	4&14 3.0 LG		
27	BROWN	FLI-1	SOLDER S2-4	30 4.25 LG		
1	RED	TI-1	FI-2	SOLDER 6.5 LG		
1	RED	TI-2	SI-2A	SOLDER 4.5 LG		
1	RED/YEL	TI-3	SI-1	5.5 LG		
1	BLACK	TI-4	SI-2	4.5 LG		
1	WHITE	TI-5	SI-1A	SOLDER 4.0 LG		
1	WHITE	TI-6	S2-2	30 7.0 LG		
15		SI-1B	SOLDER SI-2B	SOLDER .5 LG		
27	BRN	S2-5	30 FI-1	SOLDER 3.0 LG		
29	18 WHT	S2-1	30 FLI-2	SOLDER 3.0 LG		



VIEW A-A
SCALE 1:1

VIEW C-C
SCALE 1:1

VIEW B-B
SCALE 1:1



CAUTION: OFF SHEET PARTS LIST EXISTS
SEE B-PL-7017372-0-0

DATE	REVISION HISTORY	REV.	INITIALS

DESCRIPTION	DRAWING NO.	PART NO.	ITEM NO.
UNLESS OTHERWISE SPECIFIED DIMENSIONS ARE IN INCHES FIRST USED ON TU58-EX AND THE FOLLOWING TOLERANCES APPLY (PER DEC STD 114)			
INCHES TOLERANCES	ANGLES ±0°30'	APPLICABLE DIMENSION RANGE (CHECK ONE)	DIMENSION RANGE IN INCHES
			OVER TO OVER TO OVER TO OVER TO
±.1	±.05	0 TO 1.2	0.00 ±.02
±.05	±.02	1.2 TO 4.0	0.00 ±.03
±.02	±.01	4.0 TO 12.0	0.00 ±.05
±.01	±.005	12.0 TO 40.0	0.00 ±.10
±.005	±.002	40.0 TO 80.0	0.00 ±.20
±.002	±.001	80.0 TO 100.0	0.00 ±.40
THIRD ANGLE PROJECTION	DATE	TITLE	
DO NOT SCALE DRAWING	SEP-13-79	POWER SUPPLY ASSY	
REMOVE BURRS AND BREAK SHARP CORNERS	7 JAN 80	DOCUMENT NUMBER	
MATERIAL	7 JAN 80	DAD7017372-0-0 A	
SEE PART LIST	3-26-80	SCALE 1/1 SHEET 1 OF 1	
FINISH	E-UA-TU58-EX-0		

This drawing and specifications, herein, are the property of Digital Equipment Corporation and shall not be reproduced or copied or used in whole or in part as the basis for the manufacture or sale of items without written permission.

PACKAGING INSTRUCTION

REV: A DATE: 3/80
 B 11/80

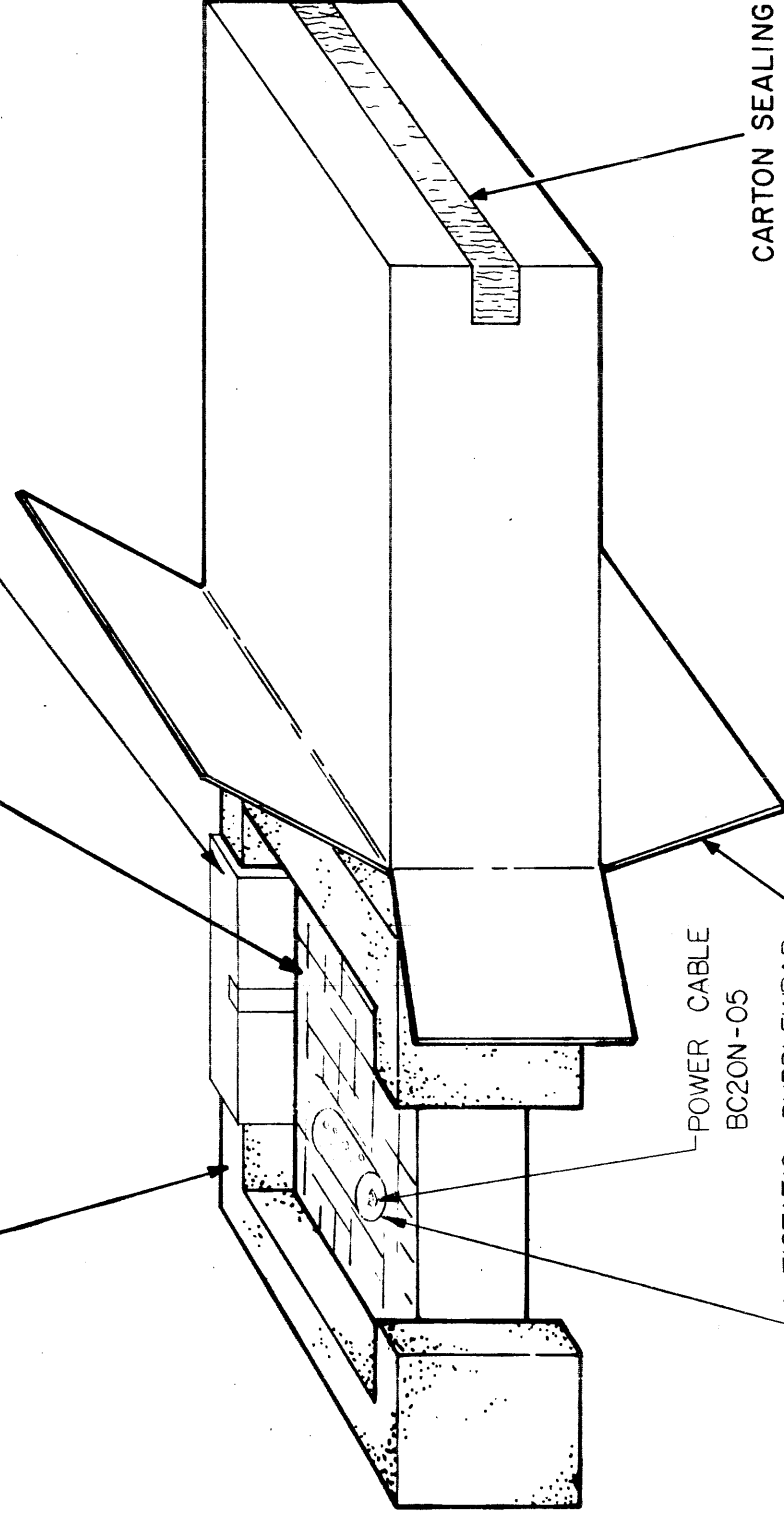
TITLE

PKG PROCESSOR SB11, TU58L, TUS58

MOLDED FOAM PAD
 9906547-00 (2 PIECES)

SB11 PROCESSOR

ONE PIECE FOLDER (9906663-00)
 (CONTAINS SPARE PARTS)



POWER CABLE
 BC20N-05

ANTISTATIC BUBBLEWRAP
 (9906200-00)

REGULAR SLOTTED CARTON
 9906546-00

CARTON SEALING TAPE
 9905729-00

FIGURE 1.
 3700490-00

PACKAGED DIMENSIONS & WEIGHTS			
	USA	METRIC	
WEIGHT	13 lb.	5.9	KILO
LENGTH	18 in.	457.2	mm.
WIDTH	10 in.	255.6	mm.
HEIGHT	20 in.	504.8	mm.
CUBE	2.1 cu. ft.	.06	cu. m
DENSITY	6.3 lb/cu. ft	100.3	Kg/cu. m

NOTE: Make changes on "C" size original only and rephotograph

ENG.	APPD.	DATE	SIZE	CODE	NUMBER	REV
	<i>M.B. Roberts</i>	10/2/79	C	SP	3700490-0-0	B

This drawing and specifications, herein, are the property of Digital Equipment Corporation and shall not be reproduced or copied or used in whole or in part as the basis for the manufacture or sale of items without written permission.

PACKAGING INSTRUCTION

TITLE
PKG PROCESSOR SB11, TU58L, TUS58

REV: A DATE: 3/80
B 11/80

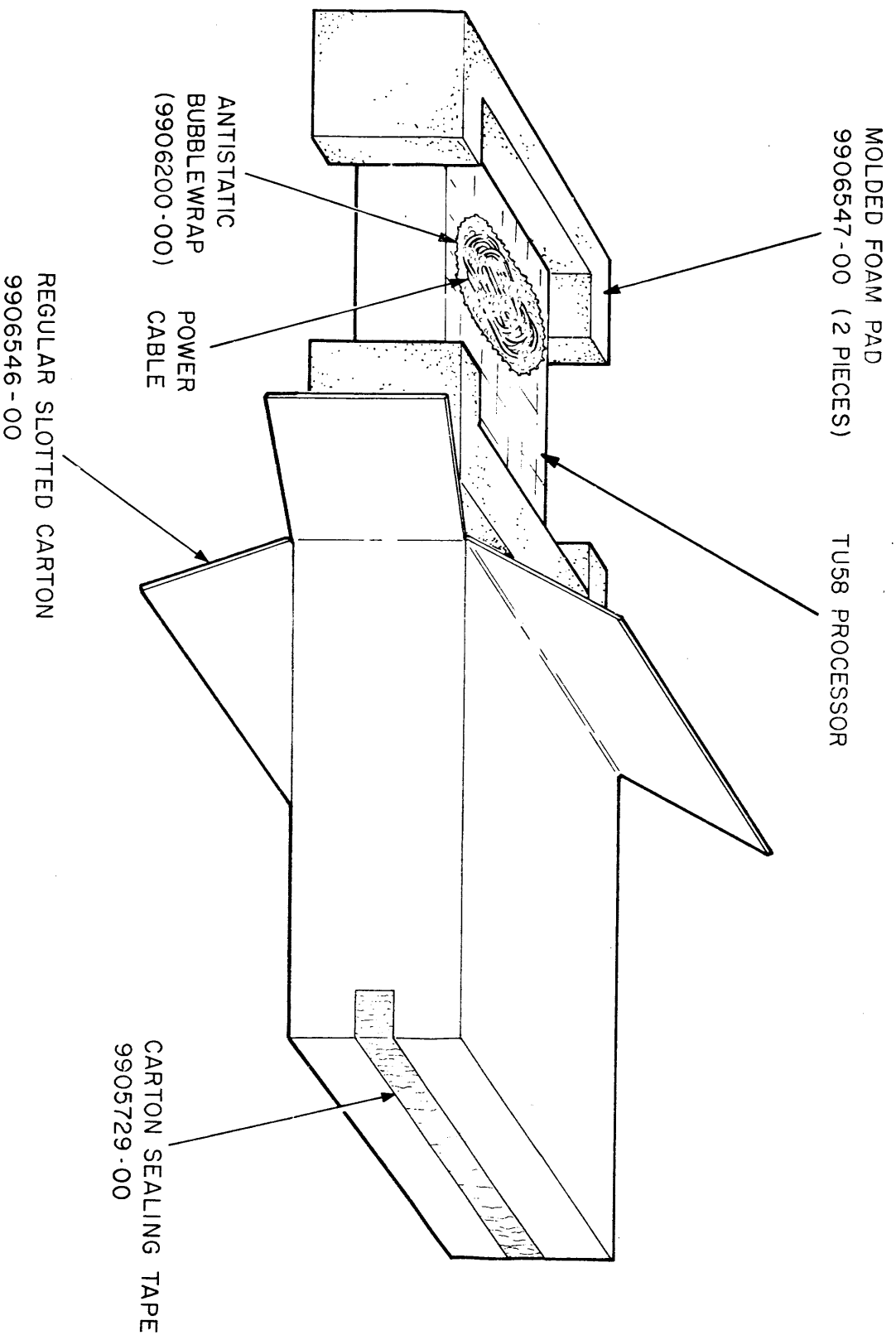


FIGURE 2
3700490-01

NOTE: Make changes on "C" size original only and rephotograph

PACKAGED DIMENSIONS & WEIGHTS	
USA	METRIC
WEIGHT 13 lb.	5.9 KILO
LENGTH 18 in.	457.2 mm.
WIDTH 10 in.	255.6 mm.
HEIGHT 20 in.	504.8 mm.
CUBE 2.1 cu. ft.	.06 cu. m
DENSITY 6.3 lb/cu. ft.	100.3 kg/cu. m

ENG. <i>[Signature]</i>	APPD. <i>[Signature]</i>	DATE 10/2/79	SIZE C	CODE SP	NUMBER 3700490-0-0	REV B
-------------------------	--------------------------	--------------	--------	---------	--------------------	-------

PACKAGING INSTRUCTION

TITLE PKG PROCESSOR SB11, TUS58, TUS58

REV: A **DATE:** 3/80
 B 11/80

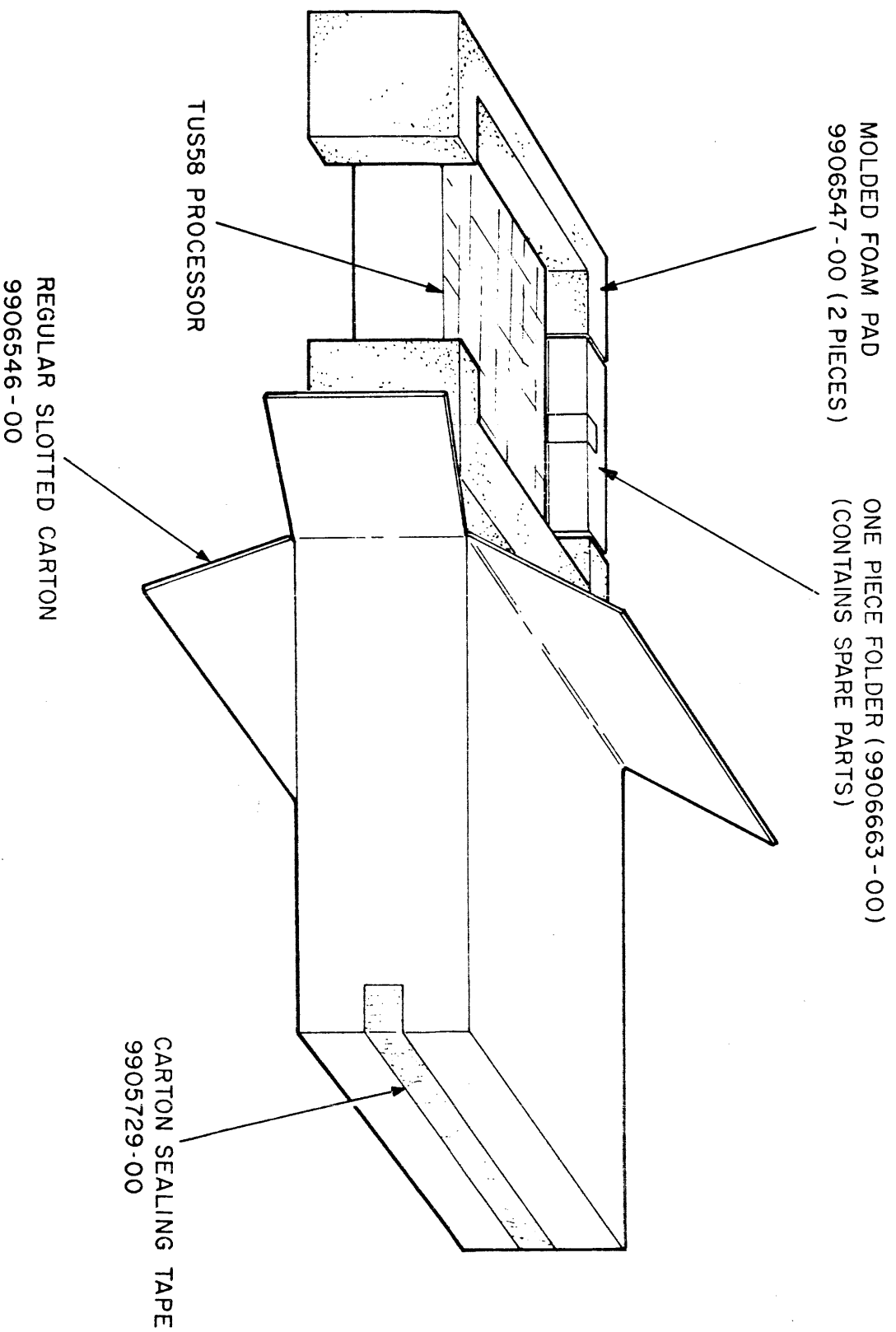


FIGURE 3
3700490-02

NOTE: Make changes on "C" size original only and rephotograph

PACKAGED DIMENSIONS & WEIGHTS	
USA	METRIC
WEIGHT 15.5 lb.	7.0 KILO
LENGTH 18 in.	457.2 mm.
WIDTH 10 in.	255.6 mm.
HEIGHT 20 in.	504.8 mm.
CUBE 2.1 cu. ft.	.06 cu. m
DENSITY 6.3 lb/cu. ft.	100.3 Kg/cu. m

ENG.	APPD.	DATE	SIZE	CODE	NUMBER	REV
	<i>A/B R. D. LOR</i>	<i>10/3/79</i>	<i>C</i>	<i>SP</i>	3700490-0-0	<i>B</i>

This drawing and specifications, herein, are the property of Digital Equipment Corporation and shall not be reproduced or copied or used in whole or in part as the basis for the manufacture or sale of items without written permission.

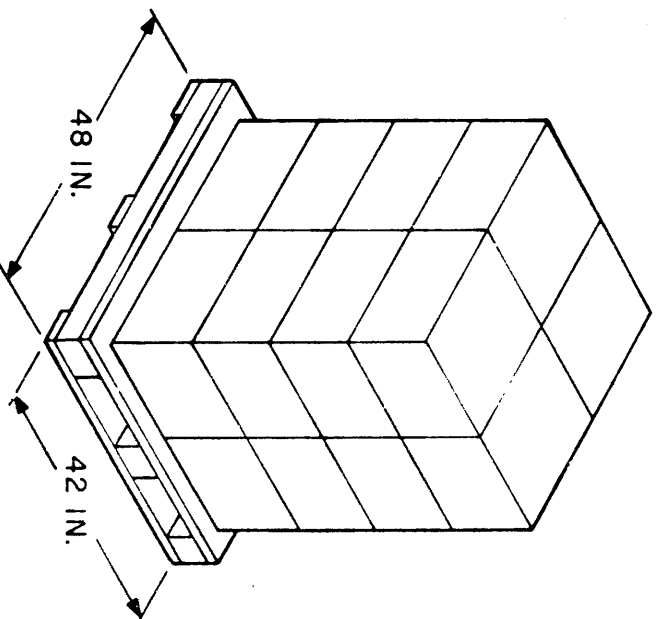
PACKAGING INSTRUCTION

TITLE PKG PROCESSOR SB11, TU58, TU58L, TUS58

REV: A **DATE:** 3/80

B 11/80

4 CARTON PER TIER
 4 TIERS HIGH
 16 CARTONS PER PALLET



LOAD DETAIL

FIGURE 4

3700490-00
 3700490-01
 3700490-02

NOTE: Make changes on "C" size original only and rephotograph

ENG. M.M.	APPD. H.S. Rennie	DATE 12/80	SIZE C	CODE SP	NUMBER 3700490-0-0	REV B
---------------------	-----------------------------	----------------------	------------------	-------------------	------------------------------	-----------------

DRC-108

SHEET 7 OF 7

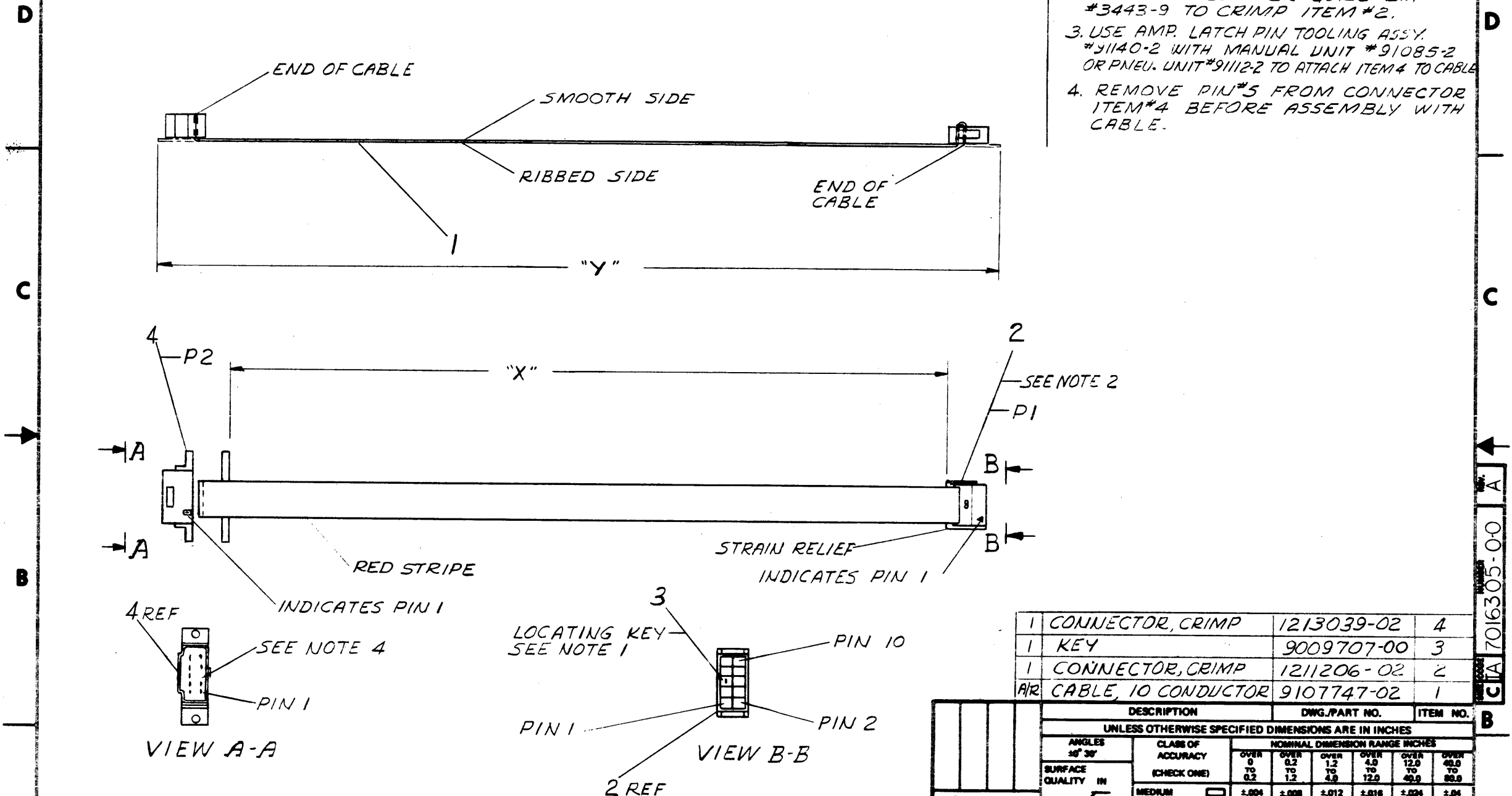
PACKAGED DIMENSIONS & WEIGHTS	
USA	METRIC
WEIGHT 258 lb.	117.03 KILO
LENGTH 48 in.	1219 mm.
WIDTH 42 in.	1067 mm.
HEIGHT 44 in.	1118 mm.
CUBE 51.3 cu. ft.	1.45 cu. m
DENSITY 5.03 lb/cu. ft.	80.58 kg/cu. m

"THIS DRAWING AND SPECIFICATIONS, HEREIN, ARE THE PROPERTY OF DIGITAL EQUIPMENT CORPORATION AND SHALL NOT BE REPRODUCED OR COPIED OR USED IN WHOLE OR IN PART AS THE BASIS FOR THE MANUFACTURE OR SALE OF ITEMS WITHOUT WRITTEN PERMISSION. COPYRIGHT © 1978, DIGITAL EQUIPMENT CORPORATION"

NUMBER	DIM "X" VARIATION	DIM "Y" (PRECUT)
7016305-03	3 FT ± 1.0 IN.	3 FT. 3 IN.
7016305-1F	1 FT 6 IN ± 1.0 IN.	1 FT 9 IN.

NOTES

1. INSERT KEY IN #5 CONNECTOR PIN HOLE AND BREAK OFF TAB
2. USE CRIMP PRESS 3M # 3440 OR #3445 AND LOCATER GUIDE 3M #3443-9 TO CRIMP ITEM #2.
3. USE AMP. LATCH PIN TOOLING ASSY. #91140-2 WITH MANUAL UNIT #91085-2 OR PNEU. UNIT #91112-2 TO ATTACH ITEM #4 TO CABLE.
4. REMOVE PIN #5 FROM CONNECTOR ITEM #4 BEFORE ASSEMBLY WITH CABLE.



DESCRIPTION	DWG./PART NO.	ITEM NO.
1 CONNECTOR, CRIMP	1213039-02	4
1 KEY	9009707-00	3
1 CONNECTOR, CRIMP	1211206-02	2
1/2 CABLE, 10 CONDUCTOR	9107747-02	1

UNLESS OTHERWISE SPECIFIED DIMENSIONS ARE IN INCHES							
ANGLES 30° 30'	CLASS OF ACCURACY (CHECK ONE)	NOMINAL DIMENSION RANGE INCHES					
		OVER 0 TO 0.2	OVER 0.2 TO 1.2	OVER 1.2 TO 4.0	OVER 4.0 TO 12.0	OVER 12.0 TO 48.0	OVER 48.0 TO 88.0
SURFACE QUALITY IN MICRONS	MEDIUM <input type="checkbox"/>	±.004	±.008	±.012	±.016	±.024	±.04
	PREFERRED <input type="checkbox"/>	±.012	±.016	±.025	±.04	±.063	±.1

REV.	CHANGE NO.	DATE	BY	CHK
A	TU58C-M1003	10/16/78	D. WARREN	

THIRD ANGLE PROJECTION	DRAWN: S. SP... 7/8	FIRST USED ON: TU58
REMOVE BURRS AND BREAK SHARP CORNERS	CHK'D: P. ... 11/01/78	TITLE: CABLE, SERIAL: TU58
DO NOT SCALE DWG	PROJ. ENG: P. ... 11/01/78	SIZE: C
MATERIAL: SEE PARTS LIST	PROD: P. ... 11/01/78	CODE: IA
FINISH: ...		NUMBER: 7016305-0-0
		REV.: A
		DIST.:

REVISIONS
D. WARREN
10/16/78

C/A 7016305-00

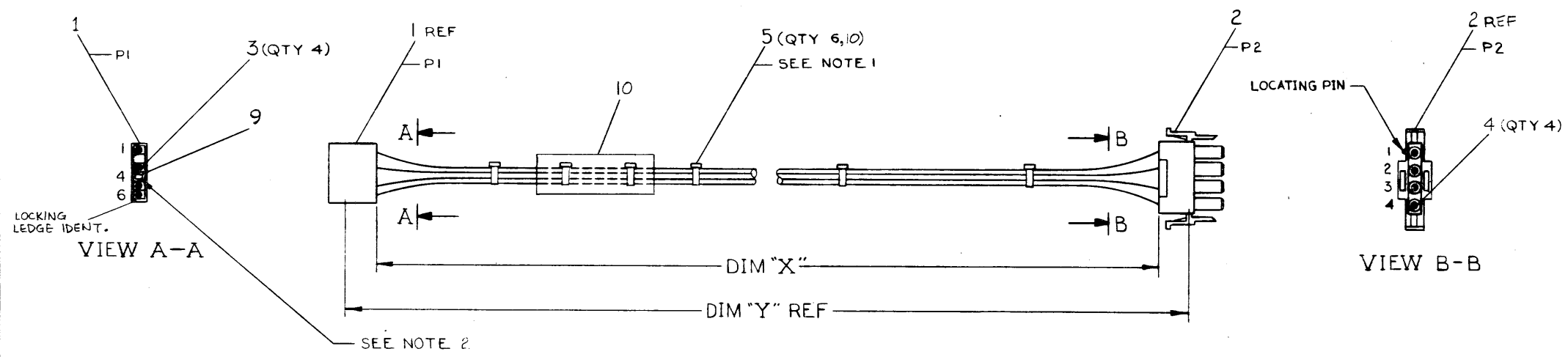
0-0-225910Z 2

THIS DRAWING AND SPECIFICATIONS HEREBY ARE THE PROPERTY OF THE UNITED STATES GOVERNMENT AND SHALL NOT BE REPRODUCED OR TRANSMITTED IN ANY FORM OR BY ANY MEANS, ELECTRONIC OR MECHANICAL, INCLUDING PHOTOCOPYING, RECORDING, OR BY ANY INFORMATION STORAGE AND RETRIEVAL SYSTEM, WITHOUT PERMISSION IN WRITING FROM THE UNITED STATES GOVERNMENT. © 1978. DIGITAL EQUIPMENT CORPORATION

WIRE TABLE							
ITEM NO	DESCRIPTION	FROM	TO	REMARKS			
	AWG	COLOR	CONN	WITH	CONN	WITH	
6	18	BLU	PI-1	1 & 3	P2-1	2 & 4	+12V
7	18	BLK	PI-3	1 & 3	P2-2	2 & 4	
7	18	BLK	PI-6	1 & 3	P2-3	2 & 4	
8	18	RED	PI-5	1 & 3	P2-4	2 & 4	+5V

LEGEND		
NUMBER	DIM "X" VARIATION	DIM "Y" (PRECUT) REF
7016527-02	2 FT - ± 1.0 IN	2 FT - 5 IN
7016527-01	1 FT - ± 1.0 IN	1 FT - 5 IN
7016527-1F	1 FT 6 IN ± 1.0 IN	1 FT - 11 IN

NOTES:
 1. ATTACH CABLE TIE (ITEM 5) APPROXIMATELY EVERY 3" AS SHOWN.
 2. INSERT KEY PLUG (ITEM 9) INTO POSITION 4 FROM THIS END.

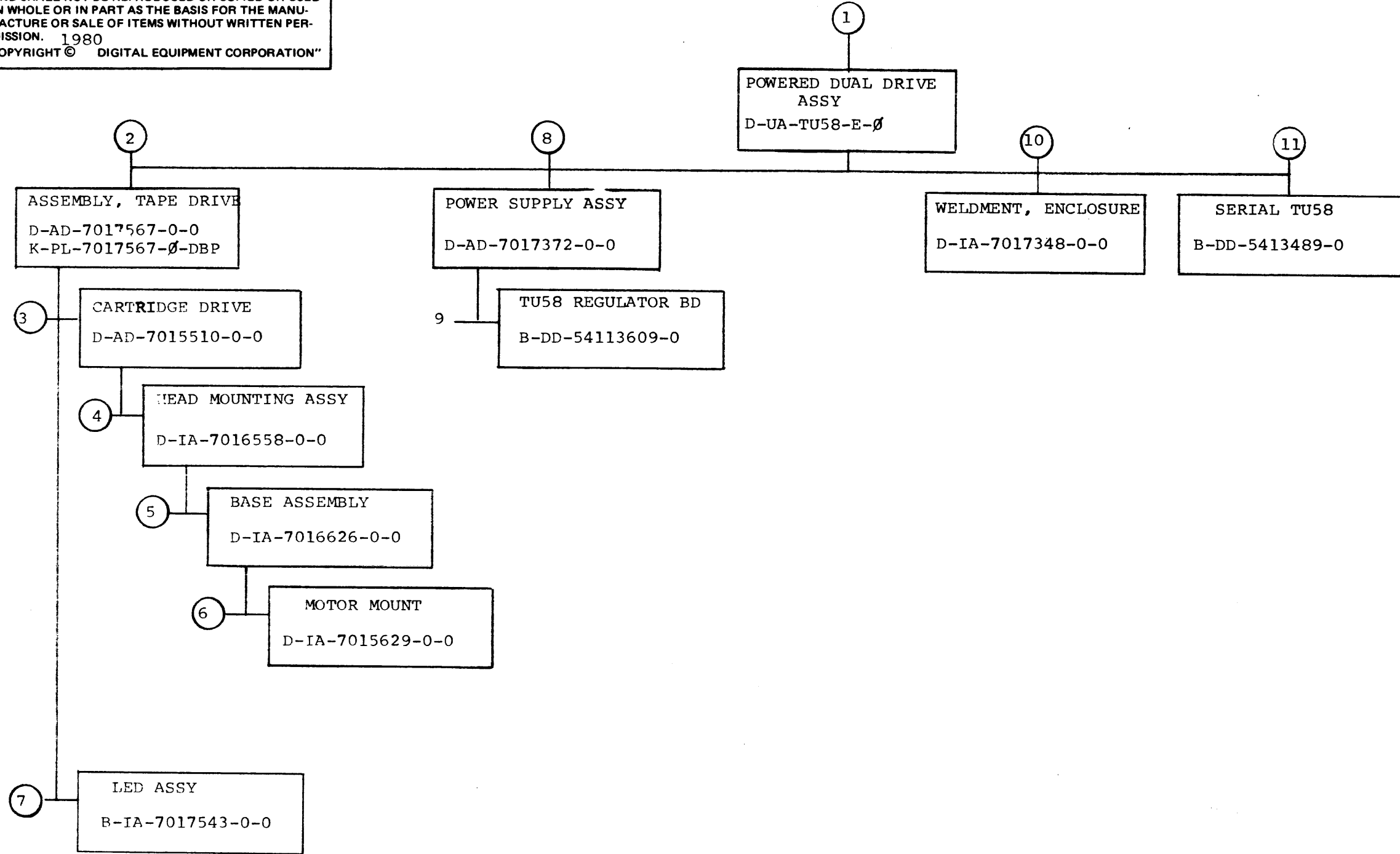


CAUTION OFF SHEETS PARTS LIST EXIST B-PL-7016527-0-0

REV.	DATE	BY	CHKD
1	10/17/78	C. BICKOFF	
2	10/17/78	JIM WALES	
3	10/17/78	D. WARREN	

DESCRIPTION	QTY	UNIT	ITEM NO.
UNLESS OTHERWISE SPECIFIED DIMENSIONS ARE IN INCHES			
ANGLE 30°	CLASS OF ACCURACY	TOLERANCE DIMENSION FINISH TOLERANCE	
SURFACE QUALITY IN	(CHECK ONE)	6	12
MICROINCHES	PREFERRED	1.001	1.002
THIRD ANGLE PROJECTION	DRN	25/78	FIRST USED ON
REMOVE BURRS AND BREAK SHARP CORNERS	CHK'D	7/8/78	TU58
DO NOT SCALE DIMS	ENG. LAMBSON	10/17/78	TITLE
MATERIAL	PROL. ENG. LAMBSON	10/17/78	CABLE, TU58
SEE PARTS LIST	PROD. DATE	3/1/78	SUPPLY OUTPUT
SCALE	1/1		
FINISH	NONE		

"THIS DRAWING AND SPECIFICATIONS, HEREIN, ARE THE PROPERTY OF DIGITAL EQUIPMENT CORPORATION AND SHALL NOT BE REPRODUCED OR COPIED OR USED IN WHOLE OR IN PART AS THE BASIS FOR THE MANUFACTURE OR SALE OF ITEMS WITHOUT WRITTEN PERMISSION. 1980 COPYRIGHT © DIGITAL EQUIPMENT CORPORATION"



TITLE POWERED DUAL DRIVE ASSY	SHEET 2 OF 4	SIZE CODE B DD	NUMBER TU58-E	REV B
----------------------------------	--------------	-------------------	------------------	----------

digital**PARTS LIST**

QUANTITY / VARIATION

NOTES:

- 1) Item 8 & 12 to be shipped inside Item 9
- 2) Item 16 (Variation Tag) is loose piece and is to be installed on unit adjacent to Serial tag.

DRN. DATE <i>21-JAN-80</i>	DES. ENG. DATE <i>OWdl 3/26/80</i>	MFG. ENG. DATE <i>Johita Bate</i>
CHK'D. DATE <i>J. Walls 3/26/80</i>	RESP. ENG. DATE <i>Johita Bate 3-26-80</i>	NEXT HIGHER DOC.

ITEM NO.	DRAWING NO.	PART NO.	DESCRIPTION	QUANTITY / VARIATION											REFERENCE DESIGNATORS		
				TU58-EA	TU58-EB	TU58-EC	TU58-ED										
1	E-UA-TU58-E-Ø	TU58-EX	POWERED DUAL DRIVE ASSY	1	1	-	-										
2		1700083-09	POWER CORD 115V, 6 AMP	-	-	1	1										
3	A-SP-3700490-0-0	3700490-01	PACKAGING INSTRUCTIONS (TU58)	-	-	1	1										
4	B-PL-7016753-0-0	7016753-00	INSTALLATION ASSY (KIT)	-	-	1	1										
5		3615809-00	MEDIA CARTRIDGE, TU58-K	-	-	-	2										
6		MPØ1Ø14	FIELD MAINT. PRINT SET (TU58-E)	-	-	1	1										
7		1700090-00	POWER CORD 270V, 6 AMP	-	-	-	1										
8		23765A9-00	BOOT CHIP	-	-	-	1										
9		9906228-00	SHIPPING BOX, ROM CHIP SET	-	-	-	1										
10		BC2ØY-25	I/O CABLE	-	-	-	1										
11		BC2ØZ-25	I/O CABLE	-	-	-	1										
12		9007207-00	FUSE, 220V, .38A SLOW BLOW	-	-	-	1										
13	E-K-ØTU58-UG-001	EK-ØTU58-UG	USERS GUIDE	-	-	1	1										
14	B-PL-TU58-E-2	TU58-EC	ACCESSORY KIT	1	-	-	-										
15	B-PL-TU58-E-2	TU58-ED	ACCESSORY KIT	-	1	-	-										
16	A-PS-3615946-0-0	3615946-0-0	VARIATION TAG	-	-	1	1										

ECO NO. MI.001																
-------------------	--	--	--	--	--	--	--	--	--	--	--	--	--	--	--	--

"THIS DRAWING AND SPECIFICATIONS, HEREIN, ARE THE PROPERTY OF DIGITAL EQUIPMENT CORPORATION AND SHALL NOT BE REPRODUCED OR COPIED OR USED IN WHOLE OR IN PART AS THE BASIS FOR THE MANUFACTURE OR SALE OF ITEMS WITHOUT WRITTEN PERMISSION. COPYRIGHT © 1980 DIGITAL EQUIPMENT CORPORATION"	TITLE	ASSY. NO.	SIZE	CODE	NUMBER	REV.
	TU58-E SHIP LIST	TU58-EX	B	PL	TU58-E-2	B

SECTION 1 OF 1	SHEET OF
----------------	----------

digital**PARTS LIST**

QUANTITY / VARIATION

NOTES:

DRN. <i>Pat 10 / City</i> DATE <i>SEP-12-79</i>	DES. ENG. <i>A. G. Galke</i> DATE <i>7 JAN 1980</i>	MFG. ENG. <i>John LaBate</i> <i>3-26-80</i>
CHK'D. <i>A. G. Galke</i> DATE <i>7 JAN 1980</i>	RESP. ENG. <i>J. Wall</i> DATE <i>7 JAN 1980</i>	NEXT HIGHER DOC.

ITEM NO.	DRAWING NO.	PART NO.	DESCRIPTION	QUANTITY	VARIATION	REFERENCE DESIGNATORS
1		1616062-00	TRANSFORMER, POWER	1		
2		1212170-00	CONTACT FEMALE (SOCKET)	4		
3		1212167-06	CONNECTOR, PLUG, 6 PIN	1		
4		9007930-00	RING TERMINAL RED #10	1		
5	C-MD-7423655-0-0	7423655-00	SHIELD, PROTECTIVE	1		
6		1215905-00	POWER RECEPTACLE AND LINE FILTER	1		
7		1216901-00	DPDT SWITCH (115-230V)	1		
8		1216391-	FUSE HOLDER (20A-300V)	1		
9		1211237-00	FUSE, .750A, 250V, SLO BLOW	1		
10		9107305-02	TUBING, SHRINK (RED)	A/R		
11	D-UA-5413609-0-0	5413609-00	REGULATOR BOARD	1		
12	D-IA-7423654-0-0	7423654-00	BRACKET, POWER SUPPLY	1		
13		9006664-00	WASHER, FLAT #10	1		
14		9006565-00	NUT, KEP #10-32	1		
15		9107560-03	WIRE, BUSS #18 AWG	A/R		
16		9006022-02	SCREW, FLAT, HD, PHL, #6-32 x 3/8	3		
17		9006022-01	SCREW, PAN HD, PHL, 6-32 x 3/8	2		
18		9009280-00	NUT, HEX #4-40	2		
19		9007649-00	WASHER, LOCK EXTERNAL TOOTH #6	2		
20		9006659-00	WASHER, FLAT, #6	2		

ECONO. INIT. A

"THIS DRAWING AND SPECIFICATIONS, HEREIN, ARE THE PROPERTY OF DIGITAL EQUIPMENT CORPORATION AND SHALL NOT BE REPRODUCED OR COPIED OR USED IN WHOLE OR IN PART AS THE BASIS FOR THE MANUFACTURE OR SALE OF ITEMS WITHOUT WRITTEN PERMISSION. COPYRIGHT © 1980 DIGITAL EQUIPMENT CORPORATION"	TITLE	ASSY. NO.	SIZE	CODE	NUMBER	REV.
	POWER SUPPLY ASSY	D-AD-7017372-0-0	B	PL	7017372-0-0	A

SECTION 1 OF 1 SHEET 1 OF 2

digital PARTS LIST

QUANTITY / VARIATION

NOTES:

DRN. DATE <i>14 SEP 79</i>	DES. ENG. DATE <i>7 JAN 80</i>	MFG. ENG. DATE <i>26 MAR 1980</i>
CHK'D. DATE <i>7 JAN 80</i>	RESP. ENG. DATE <i>7 JAN 80</i>	NEXT HIGHER DOC.

ITEM NO.	DRAWING NO.	PART NO.	DESCRIPTION	QUANTITY	UNIT	REMARKS	REFERENCE DESIGNATORS
21		9006560-00	NUT, KEP 6-32	4			
22		3616053-00	DECAL, HIGH VOLTAGE	1			
23		9007031-00	TIE, CABLE	2			
24		3615998-00	NEUTRAL, STICKER	1			
25		3612680-01	GROUND STICKER	1			
26		9107410-54	WIRE, STRD., #18 AWG, GRN/YEL	A/R			
27		9107360-11	WIRE, STRD., #18 AWG BROWN	A/R			
28		1216552-00	SWITCH, 250 VAC	1			
29		9107360-99	WIRE, STRD #18 AWG WHITE	A/R			
30		9007970-00	TERM, QUICK CONN RED 22-18 AWG	4			
31		9008268-00	THERMAL COMPOUND	A/R			
32		9006666-00	WASHER, FLAT #8	4			
33		9006563-00	NUT, KEP #8-32	4			

ECO NO.

"THIS DRAWING AND SPECIFICATIONS, HEREIN, ARE THE PROPERTY OF DIGITAL EQUIPMENT CORPORATION AND SHALL NOT BE REPRODUCED OR COPIED OR USED IN WHOLE OR IN PART AS THE BASIS FOR THE MANUFACTURE OR SALE OF ITEMS WITHOUT WRITTEN PERMISSION. COPYRIGHT © 1980 DIGITAL EQUIPMENT CORPORATION"	TITLE	ASSY. NO.	SIZE	CODE	NUMBER	REV.
	POWER SUPPLY ASSY	D-AD-7017372-0-0	B	PL	7017372-0-0	A
SECTION 1 OF 1			SHEET 2 OF 2			