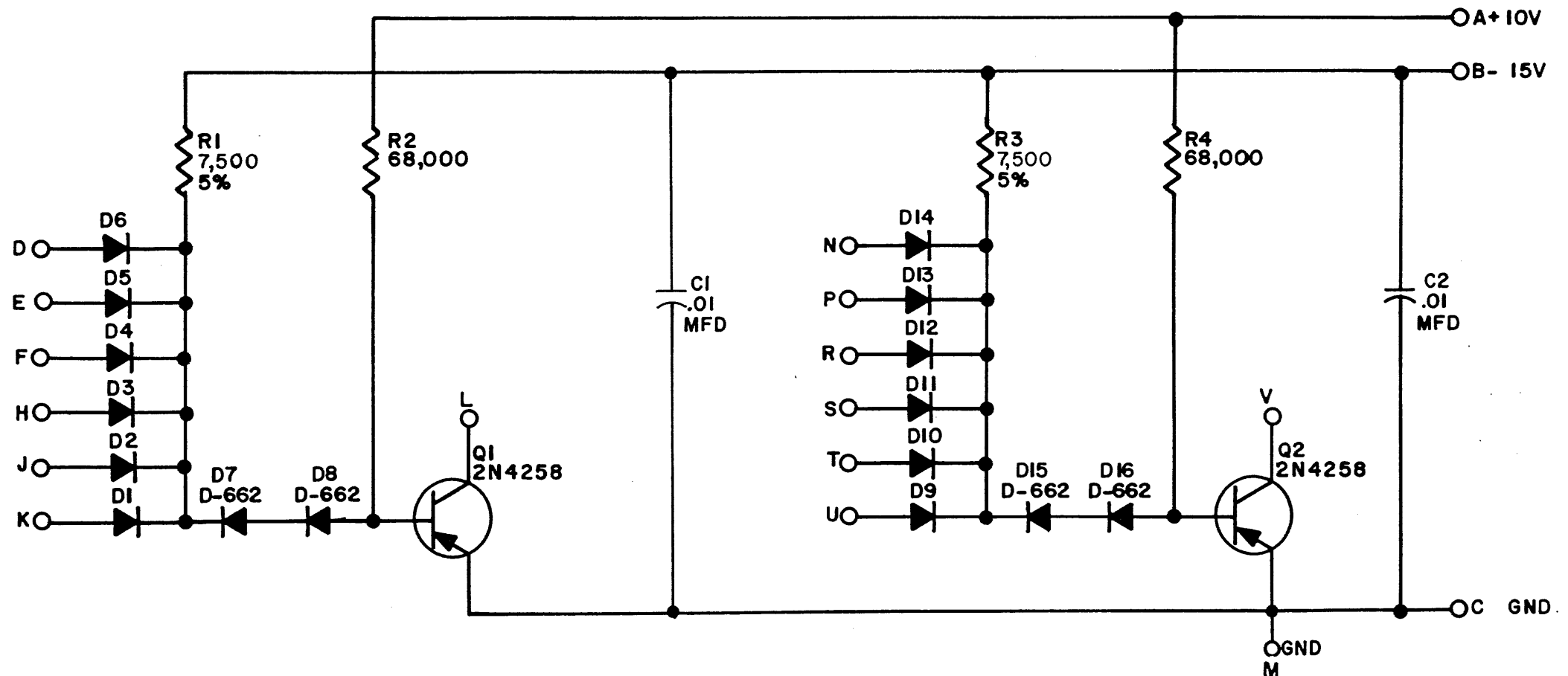


THIS SCHEMATIC IS FURNISHED ONLY FOR TEST AND MAINTENANCE PURPOSES. THE CIRCUITS ARE PROPRIETARY IN NATURE AND SHOULD BE TREATED ACCORDINGLY. COPYRIGHT 1966 BY DIGITAL EQUIPMENT CORPORATION



UNLESS OTHERWISE INDICATED:
 RESISTORS ARE 1/4W; 10%
 DIODES ARE D-664

USE THE ETCH BOARD OF THE B117



REVISIONS CHK CHG NO. REV. 5660 A 5915 B	DRN <i>M. Sullivan</i> DATE 9/1/66	TRANSISTOR & DIODE CONVERSION CHART				 EQUIPMENT CORPORATION MAYNARD, MASSACHUSETTS	TITLE DIODE GATE B137		
	CHK'D <i>R. Silverman</i> DATE 9/2/66	DEC 2N4258 D662 D664	EIA 2N4258 IN645 IN3606	DEC 	EIA 		SIZE B	CODE CS	NUMBER B137-0-1
PROD. DATE						PRINTED CIRCUIT REV. C			