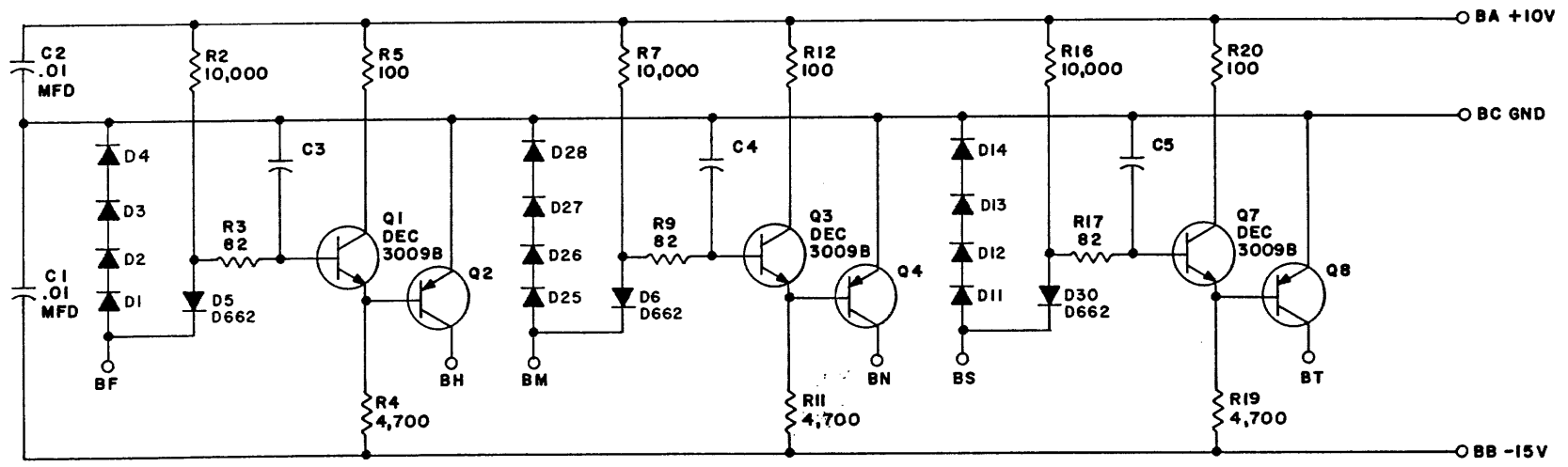
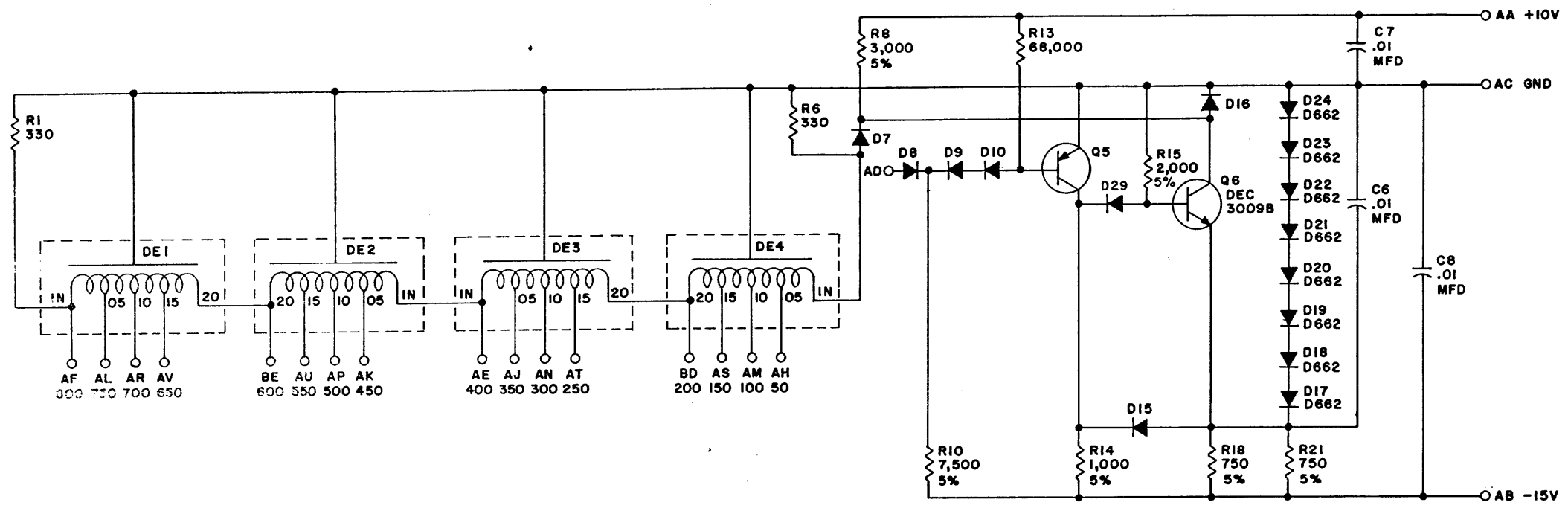


THIS SCHEMATIC IS FURNISHED ONLY FOR TEST AND MAINTENANCE PURPOSES. THE CIRCUITS ARE PROPRIETARY IN NATURE AND SHOULD BE TREATED ACCORDINGLY. COPYRIGHT 1967 BY DIGITAL EQUIPMENT CORPORATION



UNLESS OTHERWISE INDICATED:
 RESISTORS ARE 1/4W, 10%
 DIODES ARE D664
 TRANSISTORS ARE DEC3639B
 DEI-DE4 ARE DEC #330-25E-6
 CAPACITORS ARE 68MMFD

PARTS LIST IS A-PL-W301-0-0



REV. B
 NUMBER W301-0-1
 SIZE CODE C CS

REVISIONS	CHK	CHG NO.	REV.
	W/A	7137	B

DEC FORM NO. DRC 102

DRN.	DATE
M. Waller	1-9-67
CHK'D	DATE
J. S. S. S.	11/1/67
ENG.	DATE
J. S. S. S.	1/1/67
PROD.	DATE

TRANSISTOR & DIODE CONVERSION CHART			
DEC	EIA	DEC	EIA
DEC3009B	2N3009		
DEC3639B	2N3639		
D662	1N648		
D664	1N3608		

digital
 EQUIPMENT CORPORATION
 MAYNARD, MASSACHUSETTS

TITLE		DELAY LINE W301	
SIZE	CODE	NUMBER	REV.
C	CS	W301-0-1	B
PRINTED CIRCUIT REV.			
C			

D197. 324 434 435 PINK