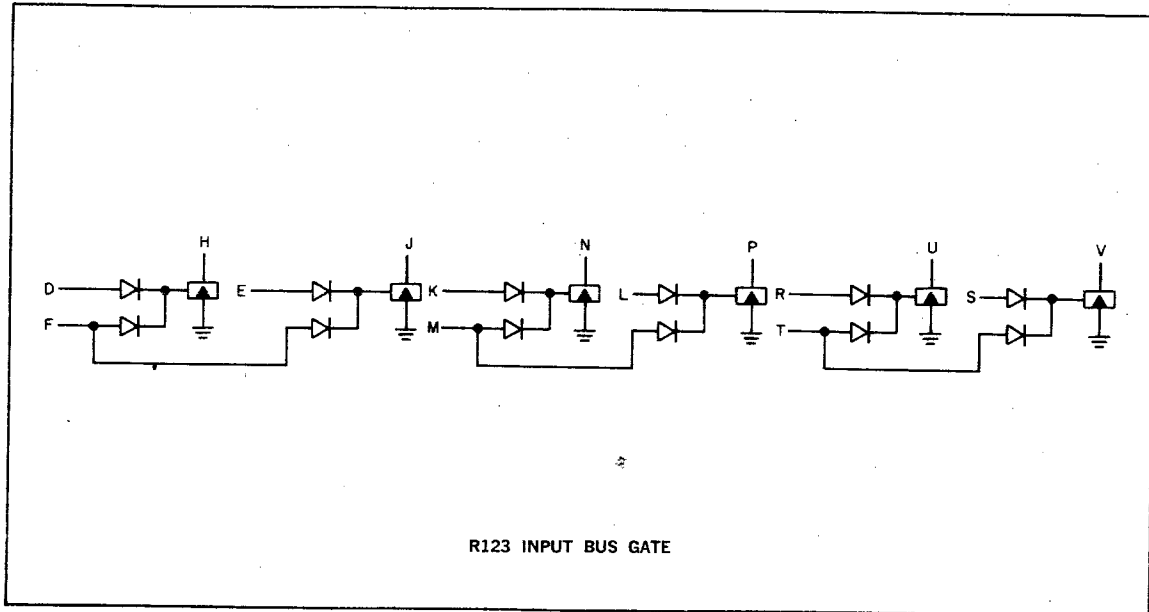


# INPUT BUS GATE TYPE R123

**R  
SERIES**



This module contains six R111-type diode gates arrayed for convenient driving of the PDP-8 computer input bus, and for other matrix-like applications. Clamped loads are not provided on this module, and must be obtained from some module in the associated logic.

**INPUT:** Standard levels of  $-3v$  and ground, 100-nsec, minimum duration. Each of the six gates is a 1 ma load shared among its grounded inputs; thus inputs F, M, and T may be loaded with up to 2 ma at ground.

**OUTPUT:** Standard levels of  $-3v$  and ground. Each output can drive up to 20 ma at ground. A 2 ma or heavier clamped load must be used at each group of paralleled collector outputs, chosen to provide fall times fast enough for the use intended. Delays are similar to R111 delays. See application note "Estimating Propagation Delay" for more information.

**POWER:**  $+10v(A)/.6$  ma,  $-15v/15$  ma.