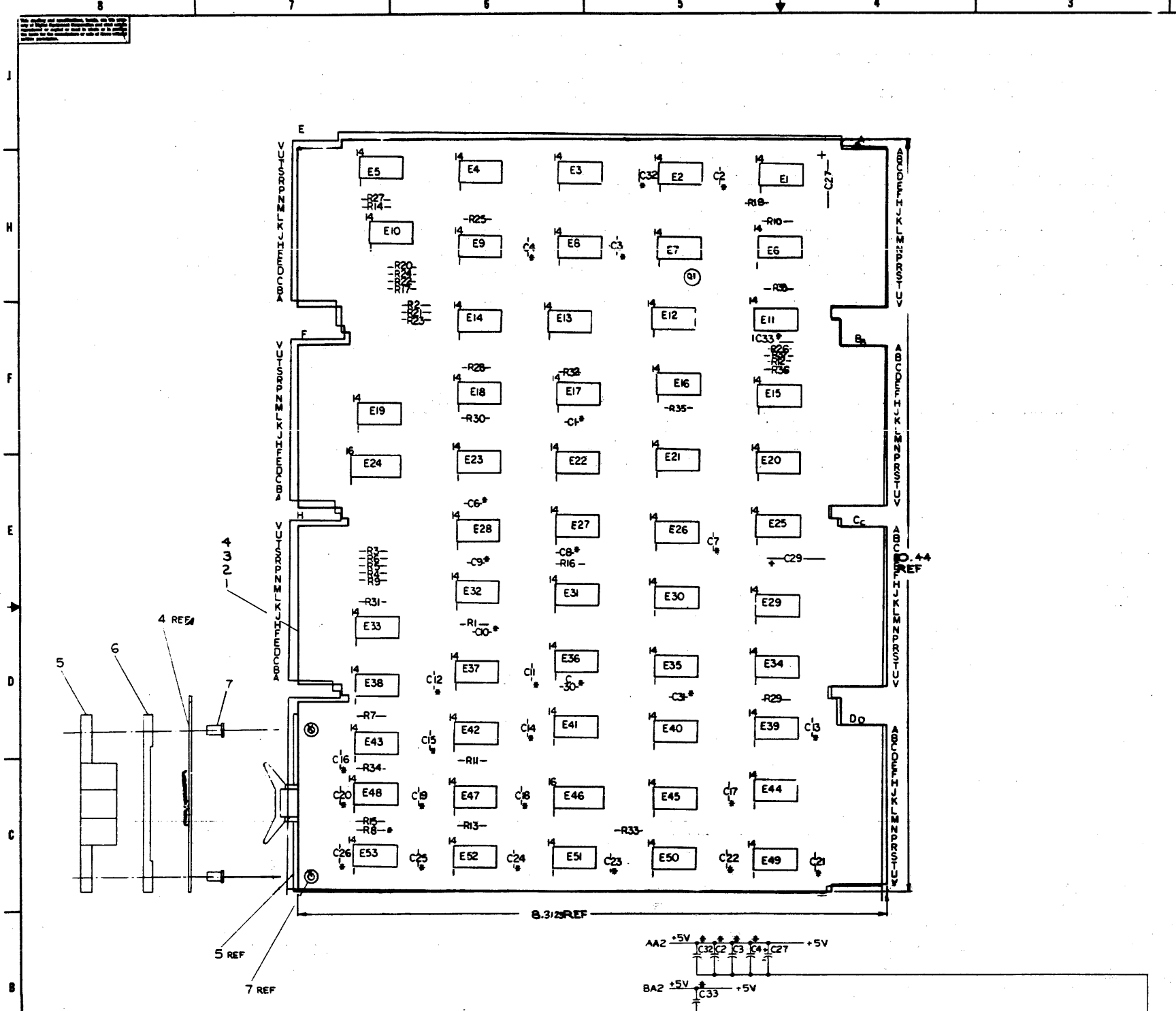
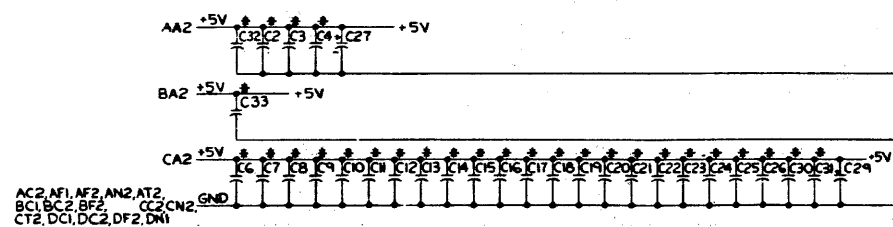


NOTES:
 * THESE COMPONENTS MUST BE ON THE M8310 IF THERE IS A KLB-A(M8319) ON THE SYSTEM.



DEC 74151	8	16
DEC 8251	8	16
DEC 384	1	8
IC TYPE	QW	QW
QW AND BY ARE USUALLY FOR 7 AND 14 PINS RESPECTIVELY EXCEPTING ARE STATED ABOVE	QW NO	QW AND FROM PT TO PT
IC PIN LOCATIONS		



AC2, AF1, AF2, AN2, AT2, BC1, BC2, BF2, CC2, CN2, GND, CT2, DC1, DC2, DF2, DN1

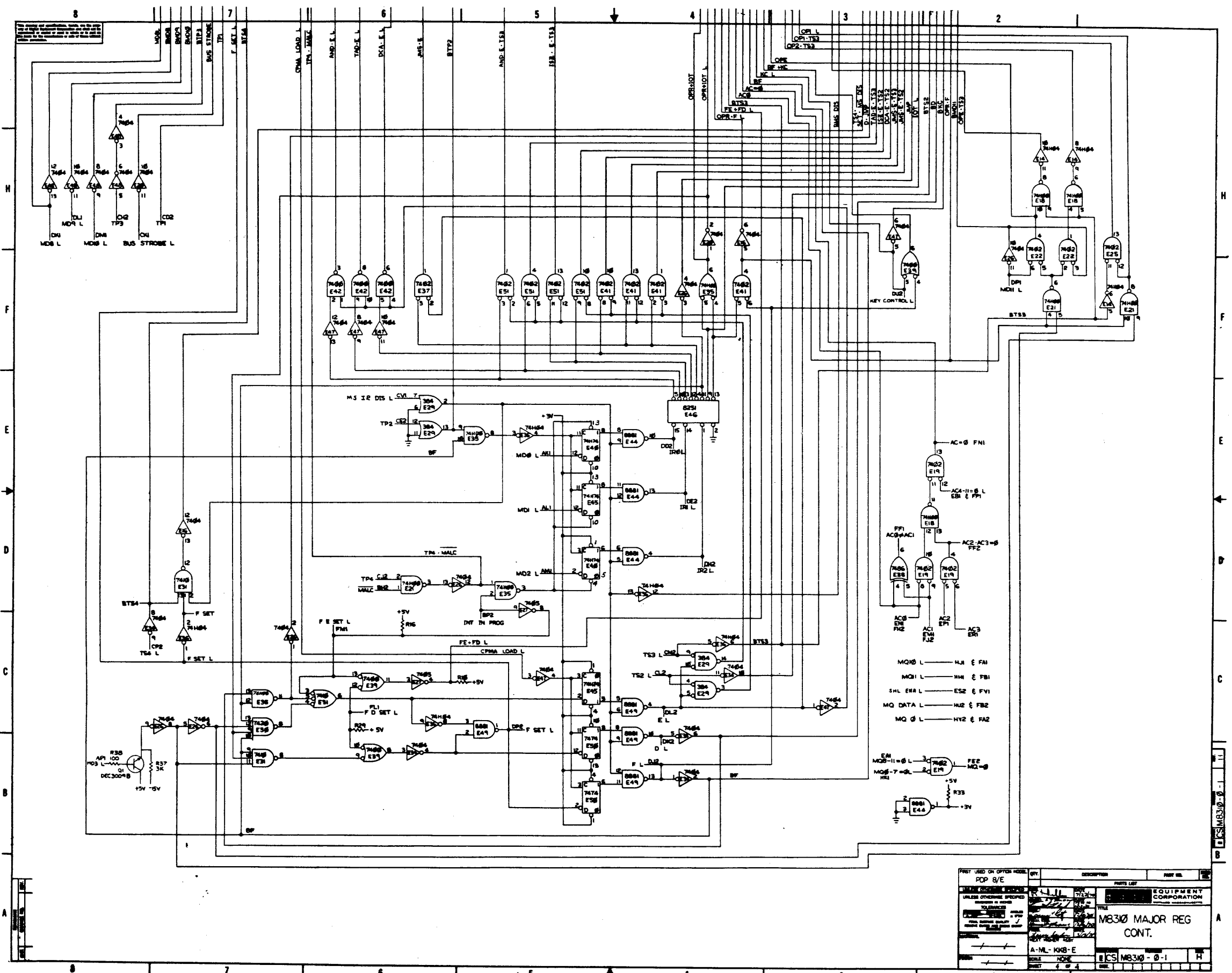
QTY	REF DESIGNATION	DESCRIPTION	PART NO.	QTY
1	R8	RES. 150, 1/4W, 5%	1300230	31
1	R37	RES. 3K, 1/4W, 5%	1300432	30
1	R38	RES. 100, 1/4W, 10%	1300231	29
1	Q1	TRANSISTOR DEC 3008B	1503100	28
2	E40, E48	I.C. DEC 74174	1904887	27
3	E18, E21, E35	I.C. DEC 74188	1903036	26
2	E19, E34	I.C. DEC 74188	1903931	25
1	R35	RES. 50, 1/4W, 5%	1300230	24
1	E38	I.C. DEC 7406	1900011	23
3	E9, E11, E13	I.C. DEC 7412	1904855	22
1	E24	I.C. DEC 74151	1904936	21
4	E8, E10, E27, E28, E44, E49, E52, E53, E18	I.C. DEC 7405	1904930	20
7	E6, E16, E20, E26, E34, E47, E48	I.C. DEC 7404	1904686	18
1	E44	I.C. DEC 8251	1904554	17
1	E24	I.C. DEC 384	1904886	16
6	E19, E22, E25, E37, E41, E51	I.C. DEC 7402	1908004	15
2	E7, E30	I.C. DEC 7420	1905577	14
2	E12, E31	I.C. DEC 7410	1905576	13
3	E32, E38, E42	I.C. DEC 7400	1905575	12
3	E17, E33, E35	I.C. DEC 7474	1905547	11
3	R1, R10, R11, R14, R15, R16	RES. 470, 1/4W, 5%	1300316	10
2	C1, C4, C6, C26, C30, C33	CAP. 22MFD 50V GR	1010274	9
2	C27, C29	CAP. 6.8UF 35V, 20% STANT	1000057	8
2	EYELETS 08-41	STIMPSON	4006750	7
1		SPACER (CABLE CLAMP)	1202704	6
1		HANDLE, FLIP CHIP MAGENTA	9009337-06	5
1		ETCHED CIRCUIT BOARD	5002278	4
REF		MODULE ECO HISTORY	8-MH-M8310-0-3	3
REF		ASSY/DRILLING HOLE LAYOUT	8-MH-M8310-0-2	2
REF		X-Y COORDINATE HOLE LOC.	8-MH-M8310-0-1	1

PART LIST		REV COLUMN	
DEC 3008B	242646	REV	DATE
PRINTED CIRCUIT BOARD REVISION			
CHECK FOR			
DESIGNED BY			
DRIVEN BY			
ETCHED BY			
ASSEMBLED BY			
INSPECTED BY			
DATE	2/1	REV	DATE
REV	1	REV	DATE
REV	2	REV	DATE
REV	3	REV	DATE
REV	4	REV	DATE

3	3008B	242646	REV	DATE
2	3008B	242646	REV	DATE
1	3008B	242646	REV	DATE
0	3008B	242646	REV	DATE
3	3008B	242646	REV	DATE
2	3008B	242646	REV	DATE
1	3008B	242646	REV	DATE
0	3008B	242646	REV	DATE
3	3008B	242646	REV	DATE
2	3008B	242646	REV	DATE
1	3008B	242646	REV	DATE
0	3008B	242646	REV	DATE

MAJOR REG. CONT. (M8310)

8310-0-1



- AC-0 FNI
- AC-1-1-0 L
- AC-2-AC3-0
- AC-3
- AC-0 EN F12
- AC-1 EN F12
- AC-2 EN F12
- AC-3 EN F12
- MQ0 L — H1 E FAI
- MQ1 L — H4 E FBI
- SHL EN L — E52 E FVI
- MQ DATA L — H12 E FB2
- MQ 0 L — H12 E FA2
- EN MQ0-11-0 L — 3 E19
- MQ0-7-0 L — 2 E19
- +5V
- R33
- 3V

REV.	DESCRIPTION	DATE	BY
1	ISSUED FOR PRODUCTION	7/21/54	W. J. ...
2	REVISION	7/21/54	W. J. ...
3	REVISION	7/21/54	W. J. ...
4	REVISION	7/21/54	W. J. ...

FIRST USED ON OTHER MODEL: RDP 8/E	TITLE: M8310 MAJOR REG CONT.
A-M-L-K08-E	EQUIPMENT CORPORATION M8310-0-1