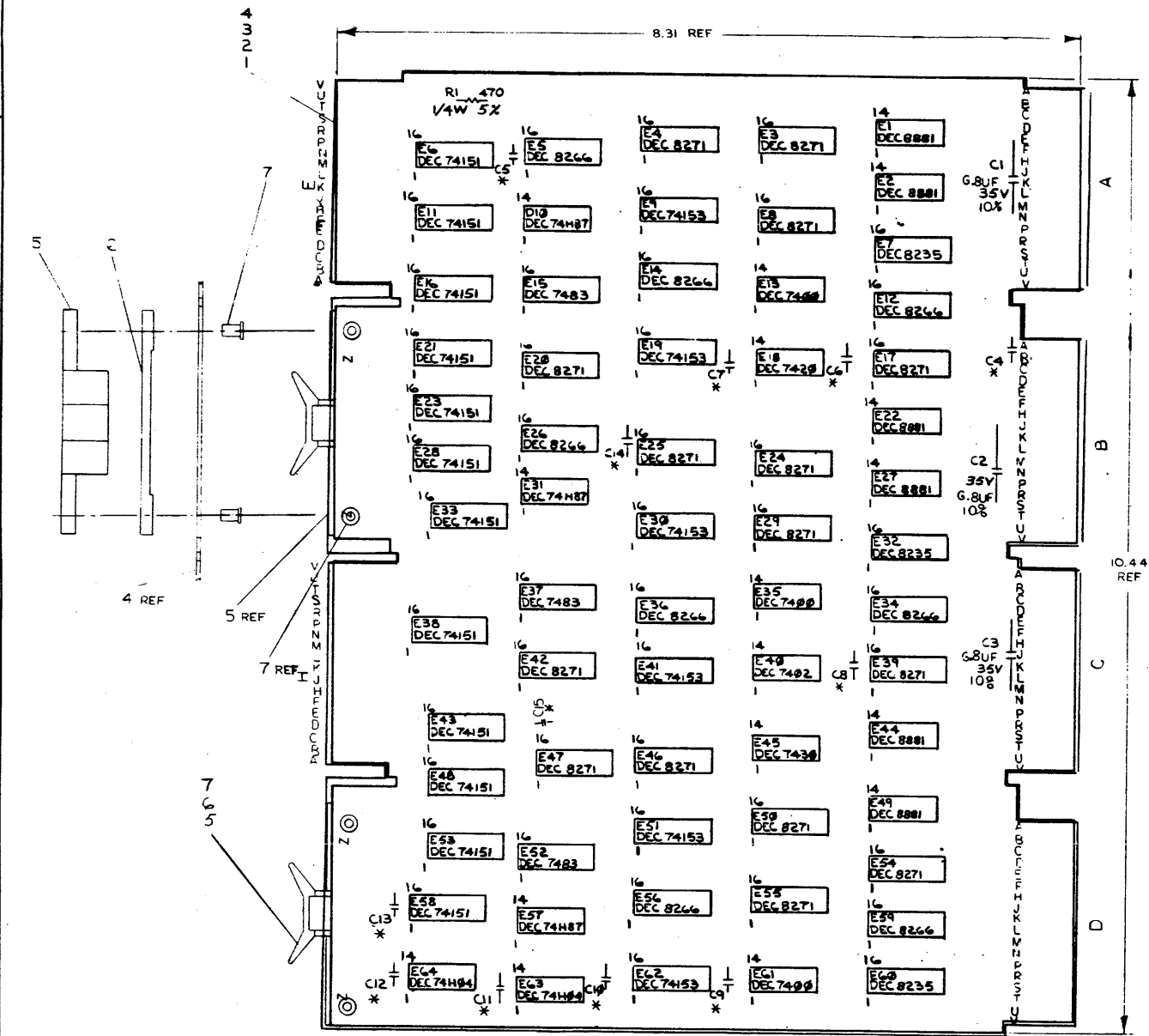
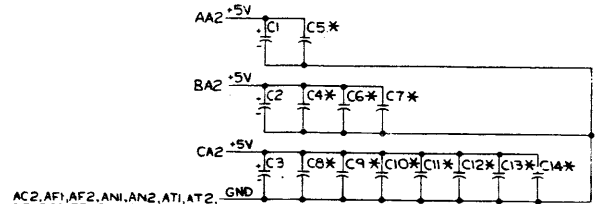


NOTES:
 * THESE COMPONENTS MUST BE ON MB300
 IF KLB-A (M6313) IS USED ON SYSTEM.



DEC 8235	8	16
DEC 7483	12	5
DEC 8271	8	16
DEC 8266	8	16
DEC 74153	8	16
DEC 74151	8	16

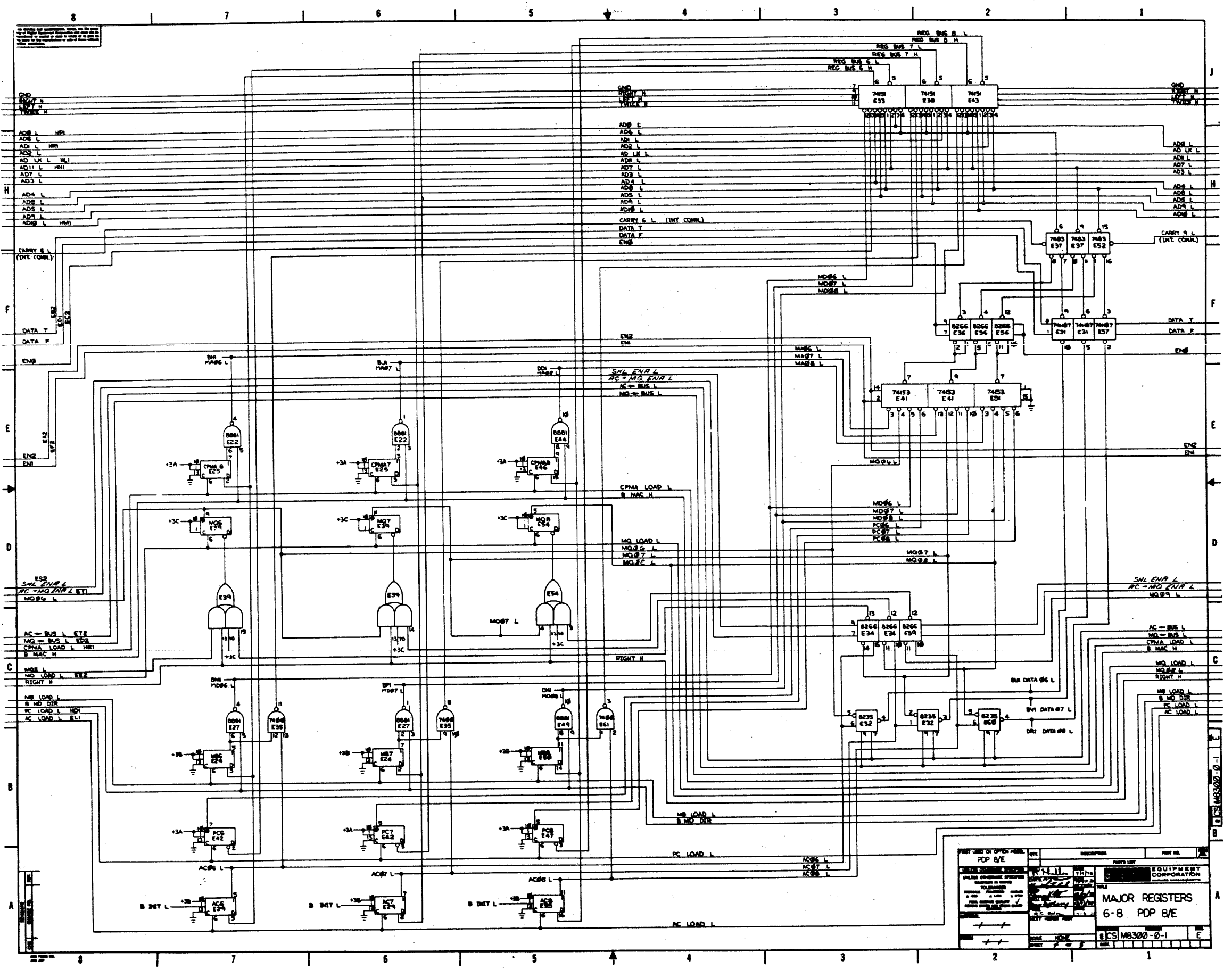


AC2, AF1, AF2, AN1, AN2, AT1, AT2,
 BC1, BC2, BF1, BF2, BN1, BN2, BT1, BT2,
 CC1, CC2, CF1, CF2, CN1, CN2, CT1, CT2,
 DC1, DC2, DF1, DF2, DN1 & DT2

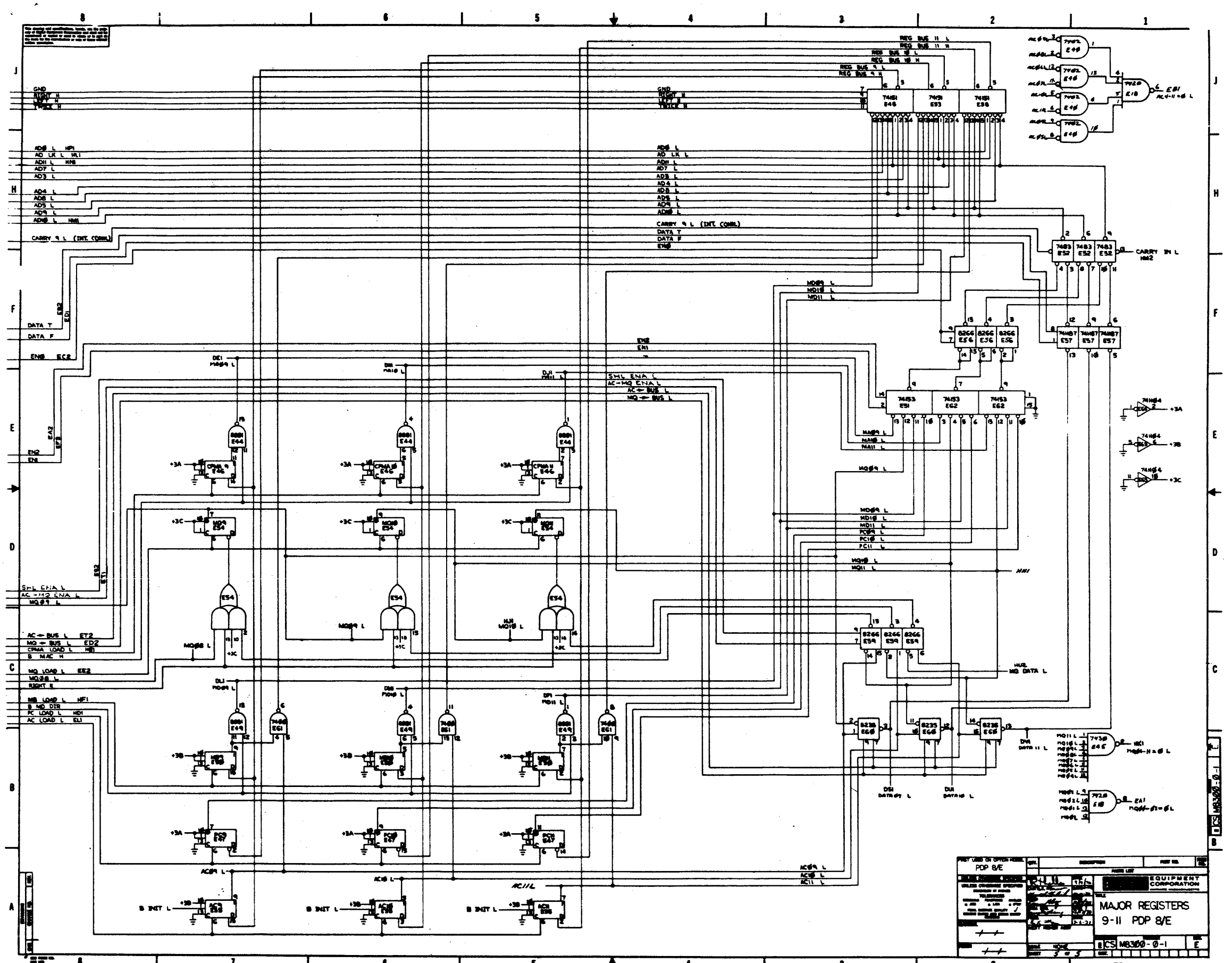
REF	REF DESIGNATION	DESCRIPTION	QTY	UNIT
1	C15	CAR 100PF D.M.	000016	25
6	E1, E15, E30, E41, E42, E43	I.C. DEC 74153	1909937	23
12	E28, E33, E38, E43, E48, E53, E58	I.C. DEC 74151	1909936	22
3	E7, E32, E60	I.C. DEC 8235	1909935	21
8	E5, E12, E14, E26, E34, E36, E56, E59	I.C. DEC 8266	1909934	20
3	E15, E37, E52	I.C. DEC 7483	1909932	9
2	E63, E64	I.C. DEC 74804	1909931	8
3	E10, E31, E57	I.C. DEC 74153	1909927	17
6	E12, E22, E27, E44, E49	I.C. DEC 8266	1909705	16
15	E3, E4, E6, E17, E20, E24, E25, E28, E31, E32, E46, E50, E54, E55	I.C. DEC 8271	1909615	15
1	E40	I.C. DEC 7402	1909004	14
1	E45	I.C. DEC 7430	1905578	13
1	E18	I.C. DEC 7420	1905577	12
3	E13, E35, E61	I.C. DEC 7400	1905575	11
11	CA - C14	RESISTOR 470 1/4W 5%	1300316	10
4	C1, C2, C3	CAP 2.2UF 35V GER	100974700	4
3		EYELETS (GAS-IMPREG STAMP)	1002790	3
4		SPACER (CABLE CLAMP)	1002702	2
1		HANDLE FLIP CHIP (MAGENTA)	100233700	1
1		ETCHED CIRCUIT BOARD	10021250	1
1		MODULE HISTORY LIST	1001810000	1
1		ASSTY/DRILLING HOLE LAYOUT	1001799000	1
1		XY COORDINATE HOLE LOC	1001799000	1

DATE	BY	REV
10/10/71	W. J. TURNER	1
10/10/71	W. J. TURNER	2
10/10/71	W. J. TURNER	3
10/10/71	W. J. TURNER	4
10/10/71	W. J. TURNER	5
10/10/71	W. J. TURNER	6
10/10/71	W. J. TURNER	7
10/10/71	W. J. TURNER	8
10/10/71	W. J. TURNER	9
10/10/71	W. J. TURNER	10

REV COLUMN	PRINTED CIRCUIT BOARD REVISION	CIRCUIT BOARD REVISION	EQUIPMENT CORPORATION
DEC NO.	EDA NO.	D-1A-KKB-E-8	MAJOR REGISTERS (KK8/E)
SEMICONDUCTOR CORPORATION	DATE 2/1	REV 1 of 5	ECS MB200-0-1



PART USED ON OTHER MODEL	POP 8/E	DESCRIPTION	PART NO.
UNLESS OTHERWISE SPECIFIED			
MAJOR REGISTERS			
6-8 POP 8/E			
ECS M3300-0-1			



REV.	DESCRIPTION	DATE	BY
1	POP 8/E	11/15/68	...
2
3
4
5
6
7
8
9
10

EQUIPMENT CORPORATION	
MAJOR REGISTERS	
9-11 PDP 8/E	
ICS M8300-0-1	E