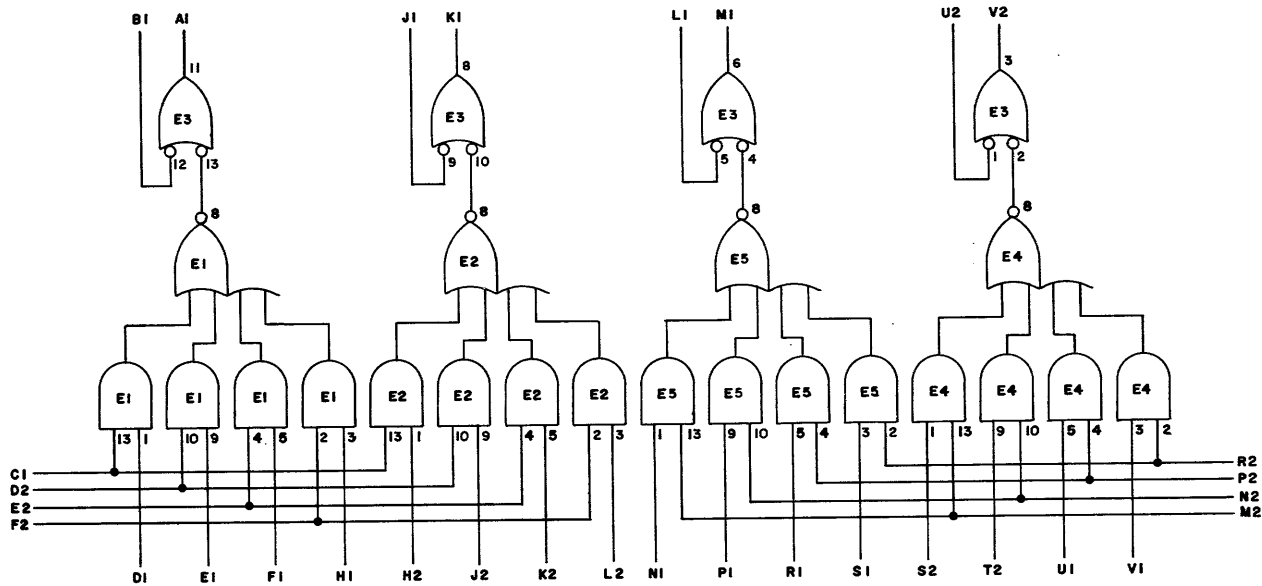
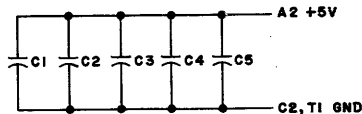


THIS SCHEMATIC IS FURNISHED ONLY FOR TEST AND MAINTENANCE PURPOSES. THE CIRCUITS ARE PROPRIETARY IN NATURE AND SHOULD BE TREATED ACCORDINGLY. COPYRIGHT 1967 BY DIGITAL EQUIPMENT CORPORATION



NOTES:
PIN 7 ON EACH IC = GND
PIN 14 ON EACH IC = +5V



E3	INTEGRATED CKT. DEC7400N	1905575
E1, E2, E4, E5	INTEGRATED CKT. DEC7453N	1905582
C1 THRU C5	CAP. .01MFD 100V 20% DISC	1001610
	PARTS LIST	A-PL-M169-0-0
REFERENCE DESIGNATION	DESCRIPTION	PART NO.
	PARTS LIST	

REVISIONS	CHK	CHG NO.	REV.

DRN.	DATE
<i>M. Keller</i>	11-8-67
CHK'D	DATE
<i>R. Schaefer</i>	11/14/67
ENG'D	DATE
<i>R. Schaefer</i>	11-9-67
PROD.	DATE
1	

TRANSISTOR & DIODE CONVERSION CHART			
DEC	EIA	DEC	EIA

digital		GATING MODULE M169	
EQUIPMENT	SIZE	CODE	NUMBER
CORPORATION	C	CS	M169-0-1
MAYNARD, MASSACHUSETTS	PRINTED CIRCUIT REV.	B	

REV. NUMBER M169-0-1