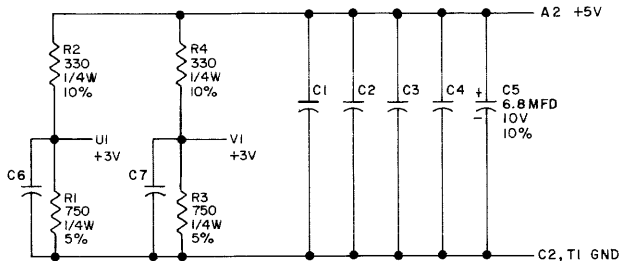
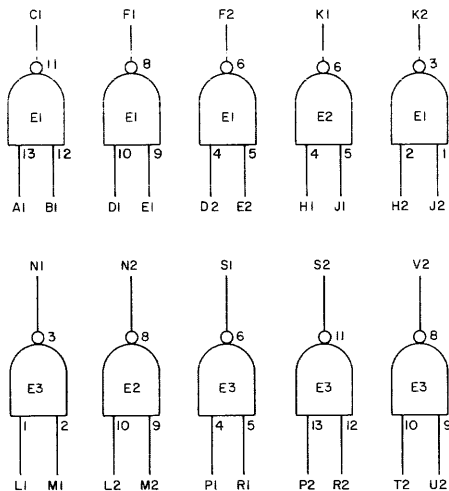


THIS SCHEMATIC IS FURNISHED ONLY FOR TEST AND MAINTENANCE PURPOSES. THE CIRCUITS ARE PROPRIETARY IN NATURE AND SHOULD BE TREATED ACCORDINGLY. COPYRIGHT 1968 BY DIGITAL EQUIPMENT CORPORATION



UNLESS OTHERWISE INDICATED:

E1 - E3 ARE DEC74HOON

PIN 7 ON EACH IC = GND

PIN 14 ON EACH IC = +5V

CAPACITORS ARE .01 MFD, 100V, 20%

REVISIONS	CHK'D	REV.
1	W. MULLEN	A
2		
3		

DRN.	M. WALLER	DATE	8-8-68
CHK'D	W. MULLEN	DATE	8-9-68
ENG.	D. O'CONNOR	DATE	10-25-68
PROD.		DATE	

TRANSISTOR & DIODE CONVERSION CHART			
DEC		EIA	

**digital**  
EQUIPMENT CORPORATION  
MAYNARD, MASSACHUSETTS

TITLE		NUMBER		REV.
10-2 INPUT NAND GATES M133		M133-0-1		A
SIZE	CODE			
B	CS			
PRINTED CIRCUIT REV.				
B				