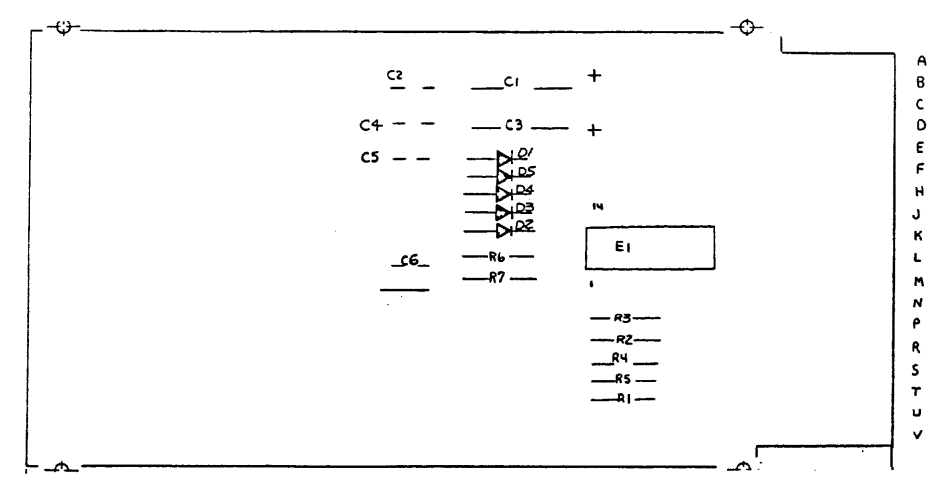
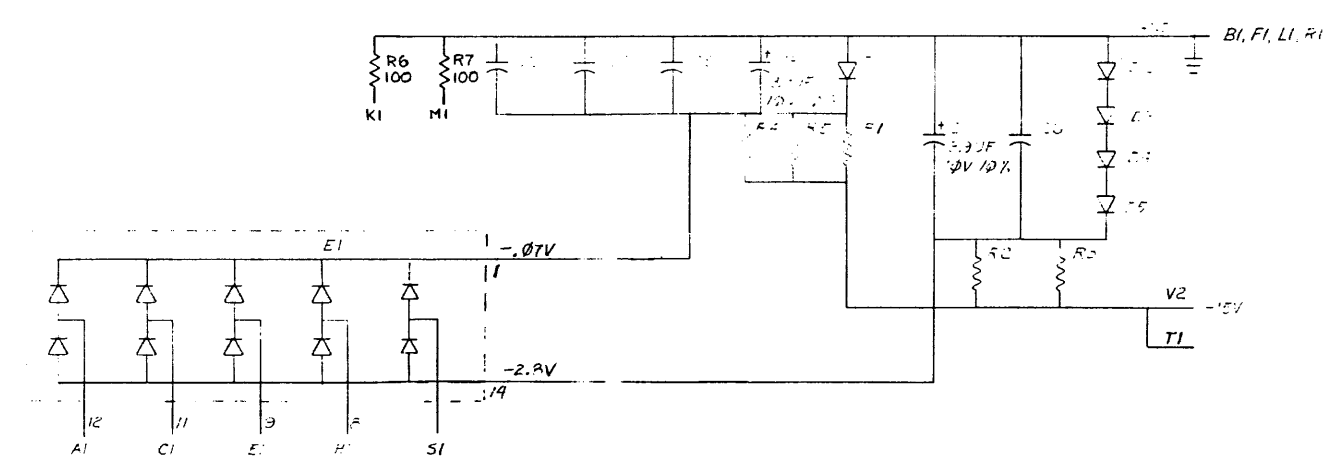


Dimensions, herein, are the proportions and shall not be in whole or in part as a scale of items without



UNLESS OTHERWISE SPECIFIED
 ALL RESISTORS ARE 1.5K 5% 1/4W
 ALL CAPACITORS ARE .01UF 20% 160V
 ALL DIODES ARE D662
 E1 IS DEC 25/81

QTY.	REF. DESIGNATION	DESCRIPTION	PART NO.	ITEM NO.
2		EYELET	9006732	12
1		I.C. DEC 2501	1910010	11
1		HANDLE, FLIP CHIP - GREEN	9008337-01	10
5	R2, 3, 4, 5, 1	RES. 1.5K 1/4W 5%	1300391	9
2	R6, 7	RES. 100 1/4W 5%	1300229	8
5	D1, 2, 3, 4, 5	DIODE D662	1100113	7
2	C1, C3	CAP. 3.9UF 10V 10% TANT	1000064	6
4	C2, 4, 5, 6	CAP. .01UF 100V 20% DISC	1001610	5
1		ETCHED CIRCUIT BOARD	5010047	4
		MODULE ECO HISTORY	B-MH-07006-0-6	3
		ASSY/DRILLING HOLE-LAYOUT	D-AH-07006-0-5	2
		X-Y COORDINATE HOLE LOCATION	K-CO-07006-0-4	1
		DEC PART NO.		

QTY.	REF. DESIGNATION	DESCRIPTION	PART NO.	ITEM NO.
PARTS LIST				

DRN	DATE						
CHKD	DATE						
ENG	DATE						
PROJ. ENG.	DATE						
PRD.	DATE						
NEXT HIGHER ASSY							
DEC NO.	EIA NO.	DEC NO.	EIA NO.	SCALE	SHEET	OF	DIST.

SEMICONDUCTOR CONVERSION CHART

digital EQUIPMENT CORPORATION
 WAYNARD, MASSACHUSETTS

I/O BUS TERMINATOR #4

SIZE CODE DCS NUMBER 67006-01 REV. C