

G290 Writer Flip-Flop

The G290 Writer Flip-Flop is a single-height board containing one JR flip-flop driving two AND gates and two power drivers. This module, used in the RS09 DECdisk supplies the -15V write voltage to the G285 Series Switch. There are several gates to the input of the flip-flop.

INPUTS: Voltage levels are 0 and -3V.

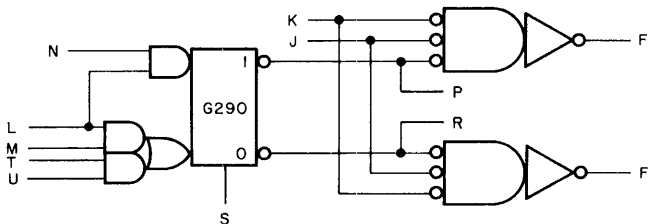
Pin	Function	Load
N,M,T,U, L	Inputs to flip-flop	Each gate is a 1 mA load shared among its grounded inputs
S	Input to flip-flop	
K,J	Direct Clear	
K,J	Enable input to output driver gate	

OUTPUTS: The E and F outputs are -15V or an open collector. The P and R outputs are 0 and -3V.

Pin	Function	Drive
E,F	Output to G285 Series Switch	150 mA
P,R	Test output of flip-flop	10 mA

INPUT/OUTPUT DELAY: 90 ns

POWER DISSIPATION: 1W



G290 Writer Flip-Flop, Block Schematic