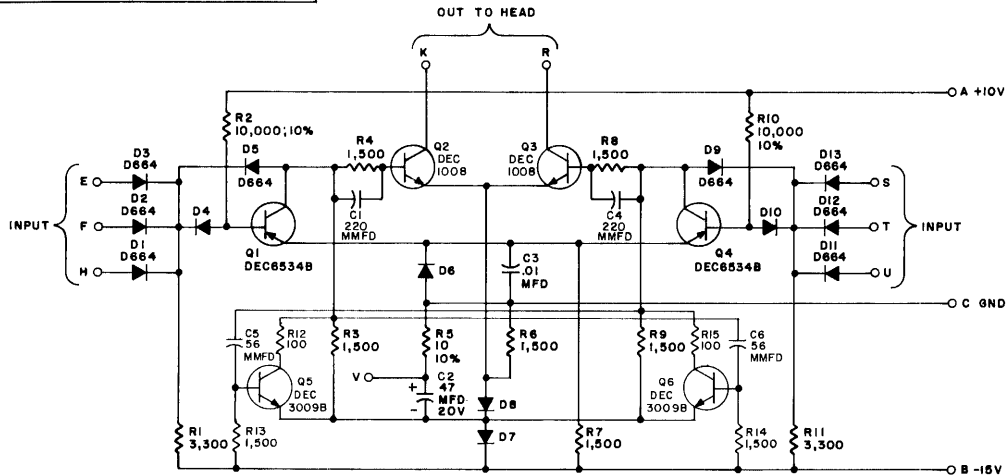


THIS SCHEMATIC IS FURNISHED ONLY FOR TEST AND MAINTENANCE PURPOSES. THE CIRCUITS ARE PROPRIETARY IN NATURE AND SHOULD BE TREATED ACCORDINGLY
 COPYRIGHT 1967 BY DIGITAL EQUIPMENT CORPORATION

REV B
 NUMBER 1-0-1
 CS B
 CODE SIZE



UNLESS OTHERWISE INDICATED:
 DIODES ARE D662
 RESISTORS ARE 1/4W; 5%

 1 2 3 4 5 6 7 8 9 10 11 12 13 14 15 16 17 18 19 20 21 22 23 24 25 26 27 28 29 30 31 32 33 34 35 36 37 38 39 40 41 42 43 44 45 46 47 48 49 50 51 52 53 54 55 56 57 58 59 60 61 62 63 64 65 66 67 68 69 70 71 72 73 74 75 76 77 78 79 80 81 82 83 84 85 86 87 88 89 90 91 92 93 94 95 96 97 98 99 100

PARTS LIST IS A-PL-G284-0-0

REVISIONS CHK'G. NO. REV. 000001 B	DRN <i>M. Waller</i>	DATE 1-26-67	TRANSISTOR & DIODE CONVERSION CHART		TITLE DISC WRITER G284					
	CHK'D	DATE	DEC	EIA		DEC	FIA			
	ENG. <i>Ed Lamb</i>	DATE 1/15/67	DEC1008	MM1008	 EQUIPMENT CORPORATION MAYNARD, MASSACHUSETTS	SIZE B	CODE CS	NUMBER G284-0-1	REV B	
	PROD I	DATE	DEC6534B	MP6554		PRINTED CIRCUIT REV.	D			
			D662	IN946						
			D664	IN308						
			DEC3009B	2N3009						