

TITLE	VR17 DISPLAY	SHEET 2 OF 5	SIZE CODE B DD	NUMBER VR17-Ø	REV F
-------	--------------	--------------	-------------------	------------------	----------

CUSTOMER PRINT SET		ELECTRICAL					CUSTOMER PRINT SET		ELECTRICAL						
VR17-Ø	MFG. SET	FIND NO.	DRAWING NO.	REV	NO OF SHT	DESCRIPTION	OPTION NO./FILE DATE	VR17-Ø	MFG. SET	FIND NO.	DRAWING NO.	REV	NO OF SHT	DESCRIPTION	OPTION NO./FILE DATE
		1	D-UA-VR17-0-0	F	3	VR17 DISPLAY ASSY				10	D-AD-7007082-0-0		1	DEFLECTION H.S. ASSY	
X			E-IC-VR14-Ø-1	#	1	BLOCK SCHEMATIC		X			A-PL-7007082-0-0		1	DEFLECTION H.S. ASSY (PL)	
X			C-MU-VR14-Ø-3	#	1	MODULE UTILIZATION					C-CS-7007082-0-1	#	1	CIRCUIT SCHEMATIC (DEFLECTION)	
X			A-PL-VR14-Ø-3	#	1	MODULE UTILIZATION (PL)									
X			A-SP-VR17-Ø-4	*		ENGINEERING SPECIFICATION									
	X		A-SP-VR14-0-6	#		CHECKOUT & ACCEPTANCE PROC.									
X			D-CS-A225-Ø-1	#	2	CIRCUIT SCHEMATIC (A225)				12	D-AD-7007084-0-0		2	POWER SUPPLY ASSY	
X			D-CS-W684-Ø-1	#	2	CIRCUIT SCHEMATIC (W684)					A-PL-7007084-0-0		3	POWER SUPPLY ASSY (PL)	
X			A-AL-VR17-Ø-6	*	1	VR17 ACCESSARY LIST					D-CS-7007084-0-1	#	2	CIRCUIT SCHEMATIC (P.S.)	
X			D-CS-G8360-0-1	#	2	CIRCUIT SCHEMATIC (G836Ø)		X							
X		4	D-AD-7007078-0-0	#	1	WIRED ASSY				13	C-UA-375-Ø-Ø		1	LIGHT PEN ASSY	
X			A-PL-7007078-0-0	#	2	WIRED ASSY (PL)		X			D-CS-G84Ø-Ø-1	#	2	CIRCUIT SCHEMATIC (G84Ø)	
		8	D-AD-7007080-0-0		1	P.S. HEATSINK ASSY									
			A-PL-7007080-0-0		1	P.S. HEATSINK ASSY (PL)									
X			C-CS-7007080-0-1	#	1	CIRCUIT SCHEMATIC (HEATSINK)									

CUSTOMER PRINT SET CODES
X = PRINT OF DOCUMENT INCLUDED IN PRINT SET
C = INCLUDES ALL PRINTS INDICATED ON DOCUMENT
S = CONFIDENTIAL AUTHORIZED SIGNATURE REQUIRED

TITLE
VR17 DISPLAY

SIZE CODE
3 5
SHEET OF B DD

NUMBER
VR17-Ø

REV
F

CUSTOMER PRINT SET		MECHANICAL					CUSTOMER PRINT SET		MECHANICAL						
VR17-Ø	MFG. SET	FIND NO.	DRAWING NO.	REV	NO OF SHT	DESCRIPTION	OPTION NO./FILE DATE	MFG. SET	FIND NO.	DRAWING NO.	REV	NO OF SHT	DESCRIPTION	OPTION NO./FILE DATE	
	X	10	D-AD-7007082-0-0	#	1	DEFLECTION HEATSINK ASSY									
	X		A-PL-7007082-0-0	#	1	DEFLECTION HEATSINK ASSY									
									X	16					
										A-PI-3700103-0-0		2	PKG INST VR17 SUPER COVER		
										A-PS-9905358-0-0		2	OUTER CARTON		
										A-PS-9905359-0-0		2	INNER CARTON / FOAM		
										A-PS-9905360-0-0		2	INNER SLEEVE		
	X	11	D-AD-7007083-0-0	#	1	DEFLECTION POWER AMP ASSY									
	X		A-PL-7007083-0-0	#	2	DEFLECTION POWER AMP (PL)									
	X	12	D-AD-7007084-0-0	#	2	POWER SUPPLY ASSY									
	X		A-PL-7007084-0-0	#	3	POWER SUPPLY ASSY (PL)									
			E-IA-7007147-0-0		1	POWER SUPPLY CABLE HARN.									
			D-IA-7408433-0-0			COVER, CAPACITOR HOLD DOWN									
			E-IA-7408402-0-0			PLATE, SIDE MTG									
			B-MD-7408416-0-0			COVER, PROTECTION									
			C-PS-1211667-0-0			SHIELD COVER									
			D-PS-1211668-0-0			SHIELD TRANSFORMER									
X		13	C-UA-375-Ø-Ø 1209608	#	1	LIGHT PEN ASSY CABLE, SWITCHCRAFT									
	X	14	C-UA-375-A-Ø 5410268	#	1	LIGHT PEN ASSY (375-A) INFRA-RED LIGHT PEN									
		15	E-AD-7009487-0-0	#		SUPER COVER ASSY									
			E-IA-7411239-0-0			EXTRUSION ASSY LOWER CORNER									
			E-IA-7411238-0-0			LOWER EXTRUSION ASSY									
			E-IA-7411232-0-0			COVER, TOP									
			F-IA-7411241-0-0			PANEL, BOTTOM									
			E-MD-7411197-0-0			COVER PANEL, REAR									
			D-PS-1211459-0-0			SHIM, CHASSIS (R.H.)									
			D-PS-1211460-0-0			SHIM, CHASSIS (L.H.)									
			C-MD-7411677-0-0			SHIM, CHASSIS (R.H.) REWCRK									
			C-MD-7411678-0-0			SHIM, CHASSIS (L.H.) REWCRK									
CUSTOMER PRINT SET CODES	X = PRINT OF DOCUMENT INCLUDED IN PRINT SET C = INCLUDES ALL PRINTS INDICATED ON DOCUMENT S = CONFIDENTIAL AUTHORIZED SIGNATURE REQUIRED						TITLE	VR17 DISPLAY		SIZE CODE	B DD		NUMBER	VR17-Ø	
								SHEET 5 OF 5						REV F	

This drawing and specifications herein are the property of Digital Equipment Corporation and shall not be reproduced, stored in a retrieval system, or transmitted in any form or by any means, electronic, mechanical, photocopying, recording, or by any information storage and retrieval system, without written permission.

DIGITAL EQUIPMENT CORPORATION MAYNARD, MASSACHUSETTS						
						DATE 10-24-73
TITLE VR17 SPECIFICATION						
REVISIONS						
REV	DESCRIPTION	CHG NO	ORIG	DATE	APPD BY	DATE
H.Lavoie 10/24/73						
ENG	<i>H.Lavoie</i>	APPD	<i>H.Lavoie</i>	SIZE	CODE	NUMBER
				A	SP	VR17-β-4
						REV

SHEET 1 OF 6

ENGINEERING SPECIFICATION				CONTINUATION SHEET
TITLE VR17 SPECIFICATION				
GENERAL DESCRIPTION:				
The VR17 is a self-contained CRT display unit requiring only analog position and digital unblanking information. It is designed for use with a digital display controller. The amount of information displayed depends on the specific system; however, 1250 random points can be displayed flicker free at a 40 Hz refresh rate. Viewable area is 90 inches square with an aspect ratio of 3:4. The unit is 10 1/2 inches high, 19 inches wide, 17 inches deep, and weighs about 75 pounds. It is available in either a rack mounted or table top model.				
OPERATOR CONTROLS: (All controls labeled as to function)				
Front Panel:				
Brightness/ON-OFF		Manual brightness control and AC power switch.		
Internal Controls: These controls accessible from the top of the unit through the safety screen.				
Deflection Controls: The following controls are 10 turn pots located on the deflection amplifiers (A225). All inputs have protection against momentary excessive voltage.				
X Gain	Controls horizontal input sensitivity			
Y Gain	Controls vertical input sensitivity			
X Position	Manual Position Control			
Y Position	Manual Position Control			
	SIZE	CODE	NUMBER	REV
	A	SP	VR17-β-4	

SHEET 2 OF 6

ENGINEERING SPECIFICATION				CONTINUATION SHEET
TITLE VR17 SPECIFICATION				
NOTE: With deflection inputs grounded, the position controls allow the beam to be positioned anywhere within the usable screen area.				
CRT Controls: These controls are 10 turn pots located on the G836 power supply module. Their purpose is to adjust focus and grid bias voltages. They are adjusted at the factory.				
Focus: Adjusted for best overall focus.				
Brightness Preset: To adjust the range of the front panel brightness control.				
GENERAL ELECTRICAL SPECIFICATION:				
Spot Size: <20 mils inside the usable screen area at a brightness of 25 ft. lamberts. Spot size is measured using shrinking raster technique at a brightness of greater than 30 ft. lamberts.				
Jitter: $\leq \pm 1$ spot diameter (Repeatability is the deviation from the nominal location of any given spot)				
Gain Change: From a fixed point on the screen, less than $\pm 0.3\%$ gain change for each $\pm 1\%$ line voltage variation.				
Temperature Range: 0 to 50°C operating.				
Relative Humidity: 10 to 90% noncondensing.				
Brightness: <30 ft. lamberts; measured using a shrinking raster technique.				
Linearity: Maximum deviation of any straight line will be $\leq 1\%$ of the line length measured perpendicular to a best fit straight line.				
	SIZE	CODE	NUMBER	REV
	A	SP	VR17-β-4	

SHEET 3 OF 6

ENGINEERING SPECIFICATION				CONTINUATION SHEET
TITLE VR17 SPECIFICATION				
Deflection Method: Magnetic (70° diagonal deflection angle)				
Focus Method: Electrostatic				
High Voltage: 10.5KV DC nominal (voltage proportional to input line voltage). Supply is self-contained and equipped with a bleeder resistor.				
Shielding: CRT from tip of neck to high voltage receptacle is fully enclosed in a magnetic shield.				
Overload Protection: Unit is protected against fan failure or air blockage by thermal cutout.				
DEFLECTION AMPLIFIER SPECIFICATION				
1. Deflection Amplifiers are DC coupled and are capable of sustaining a worst case AC or DC deflection at environmental extremes.				
2. Input Specification				
a. Inputs are differential				
b. Differential input impedance ... 5K ohms minimum				
c. Input sensitivity ... 200 mv/inch maximum				
d. Common Mode Rejection Ratio ... 40 db				
e. Maximum Operating Input ... $\pm 6''$ (Maximum operating input is the sum of the common mode input and the differential input)				
f. Input offset not to exceed $\pm 1/2$ peak to peak input signal.				
g. Maximum non-operating input ... $\pm 50V$				
	SIZE	CODE	NUMBER	REV
	A	SP	VR17-β-4	

SHEET 4 OF 6

ENGINEERING SPECIFICATION

CONTINUATION SHEET

TITLE VR17 SPECIFICATION

- 3. Full screen deflection and settling time to within ± 1 spot diameter $\leq 18 \mu s$
- 4. Small signal settling time to within 1/2 spot diameter ... $\leq 1 \mu s$ for a 0.1 inch deflection.
- 5. Small signal linear slew rate ... ≥ 0.4 inch in $1 \mu s$
- 6. Velocity error coefficient ... 500 ns maximum. (Average ramp delay between input and output)

Z AXIS SPECIFICATION

- 1. Z Input: A negative transition from $\geq +2.4V$, but not exceeding $+8V$, to $\leq +0.8V$, but not less than $-4V$, in $20 ns$ will cause an unblanking pulse at the CRT cathode from approximately $+60V$ to ground with a duration of $\geq 200 ns$ at the 50% points. Delay between the 50% point of the negative input transition to the 50% point of the output pulse is less than $100 ns$.
- 2. Z Direct: A positive going pulse not exceeding $35V$, but at least $20V$ in height and not exceeding $10 \mu s$ in duration will unblank the CRT to a viewable intensity. This signal is AC coupled to the CRT grid.
- 3. Channel Select: With the Channel Select Switch in the Channel 1 position, a positive level of greater than $+2.4V$, but not $+8V$ will enable the Z input circuit. A level of less than $+0.8V$ but not less than $-4V$ will disable the circuit. With the switch in the Channel 2 position, a positive level will enable the Z circuit; a negative level will disable it. Placing the switch in the Channel 1 and 2 position disables

SIZE	CODE	NUMBER	REV
A	SP	VR17- β -4	

ENGINEERING SPECIFICATION

CONTINUATION SHEET

TITLE VR17 SPECIFICATION

this input.

POWER SUPPLY SPECIFICATION:

- 1. All power supplies necessary for operation of the unit are self contained.

2. Input Requirements

Voltage: $100V \pm 10\%$
 $117V \pm 10\%$
 $230V \pm 10\%$

Selectable by tap changes.

Frequency: $50 - 60 Hz$

Power: ≤ 500 watts

Current: ≤ 5 amperes

Type: Single Phase

NOTE: Different AC power receptacles are provided on 200 and 230V units.

- 3. Fuses are provided and labeled as to function, type, and rating for the primary circuit and deflection power circuits.
- 4. Thermal Cutout, which operate on the AC primary, are used to prevent damage due to fan failure, air blockage, or excessive ambient temperature.

REAR PANEL CONNECTIONS:

All inputs and outputs are available at a 24 pin plug DEC #1209630. Details of plug should refer to print #V

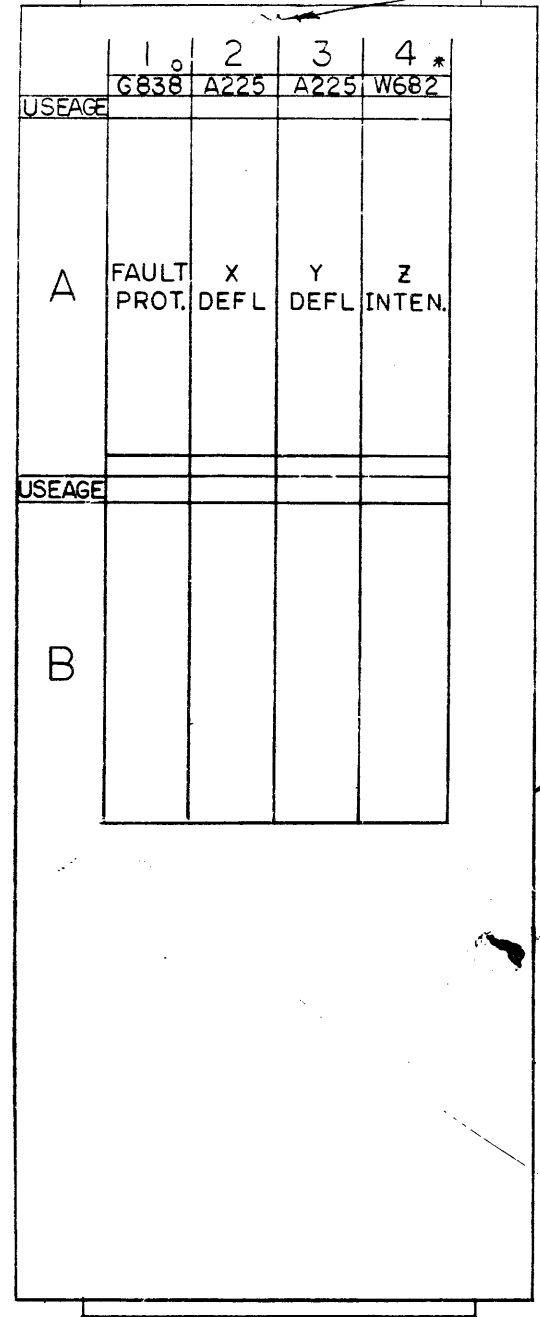
SIZE	CODE	NUMBER	REV
A	SP	VR17- β -4	

This drawing and specifications, herein, are the property of Digital Equipment Corporation and shall not be reproduced or copied or used in whole or in part as the basis for the manufacture or sale of items without written permission. 1973

SEE NOTE *2

NOTES:

1. MODULE INFORMATION SHOWN FROM WIRING SIDE.
2. A225' ARE REPLACED WITH A225-YB'S ON VRI4-LC AND LD



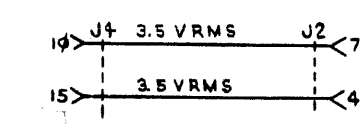
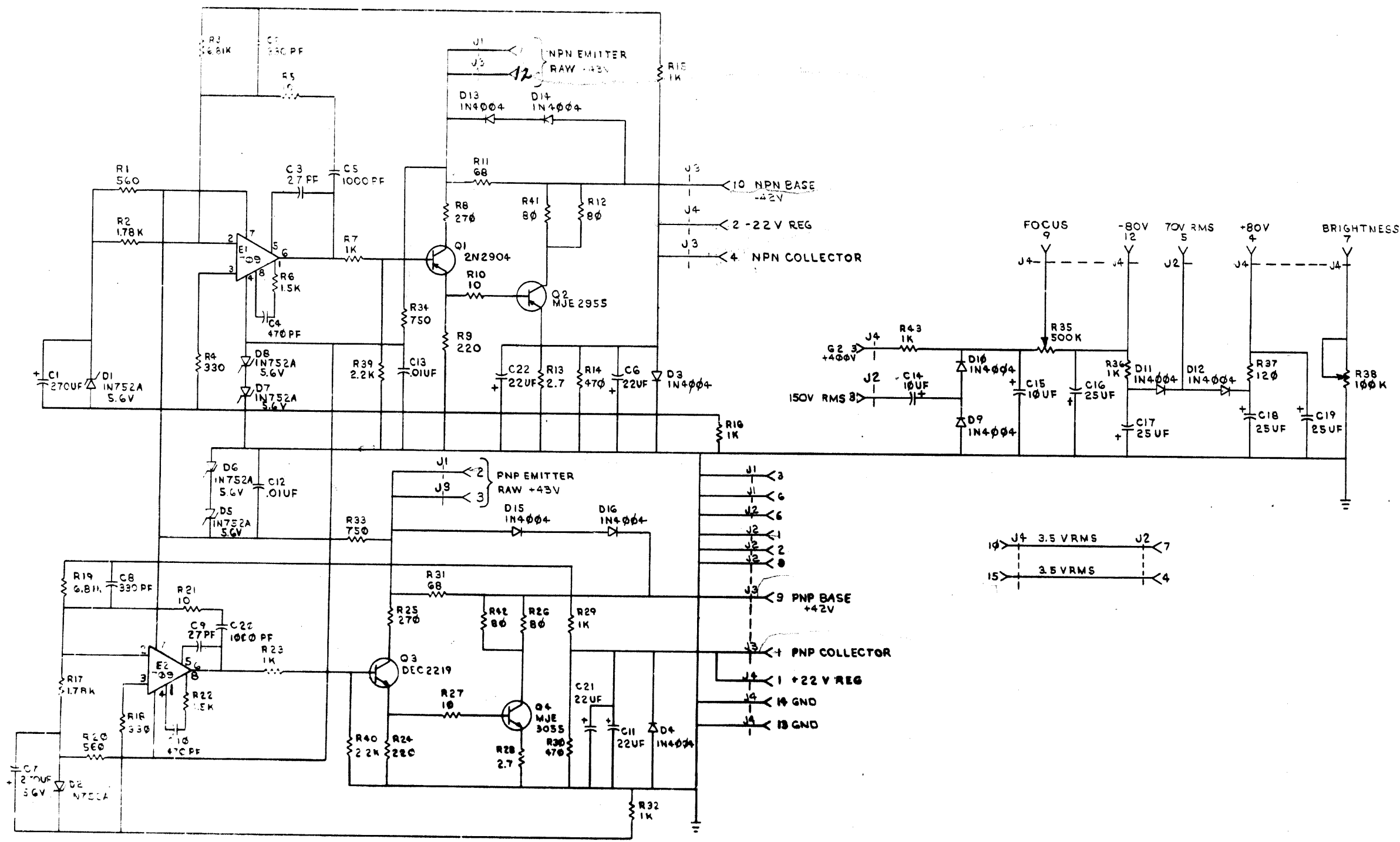
SEE NOTE *1

o G840 LIGHT PEN OPTION } (STANDARD ON VRI4 LC, LD)
 * W684 8 LEVEL INTENSITY OPTION

CHIK	CHANGE NO.	REV.
	VRI4-00019	A
	<i>Ballard 8-10-72</i>	
	A. HISHMAN	
	<i>C. Fishman</i>	
	VRI4-00022	B
	<i>A. Fishman 1-3-73</i>	
	A. FISHMAN	
	<i>C. E. 1-11-73</i>	
	VRI4-00030	C
	<i>R. Rowles 1-3-74</i>	
	H. LAVOIE	
	<i>H. Lavoie 1-3-74 D.P.</i>	

FIRST USED ON OPTION/MOD	QTY.	DESCRIPTION	PART NO.	ITE/1 NO.
VRI4				
PARTS LIST				
UNLESS OTHERWISE SPECIFIED	DRN	DATE	digital EQUIPMENT CORPORATION <small>MAYNARD, MASSACHUSETTS</small> TITLE MODULE UTILIZATION (VRI4)	
UNLESS OTHERWISE SPECIFIED	CHK'D	DATE		
DIMENSION IN INCHES	ENG	DATE		
TOLERANCES	PROJ. ENG.	DATE		
DECIMALS ± .005	PROD.	DATE		
FRACTIONS ± 1/64				
ANGLES ± 0°30'				
FINAL SURFACE QUALITY REMOVE BURRS AND BREAK SHARP CORNERS				
MATERIAL	NEXT HIGHER ASSY		SIZE CODE	NUMBER
+ + +	D-UA-VRI4-0-0		CMU	VRI4-0-3
FINISH	SCALE	SHEET	DIST.	REV.
+ + +	+ + +	1 OF 1		C

REV. C
 NUMBER VRI4-0-3
 SIZE CODE CMU



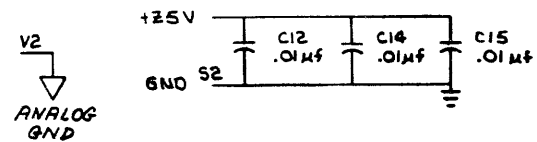
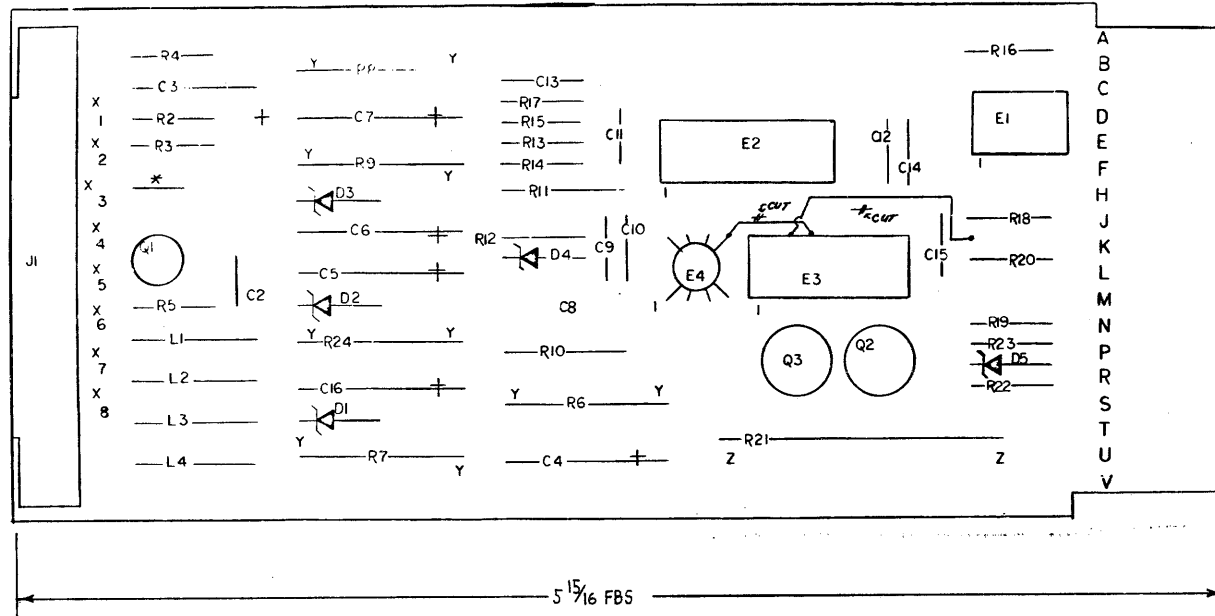
TITLE	VR14 POWER SUPPLY AND REGULATOR	SIZE CODE	DCS	NUMBER	G8360-01	REV.	B
SCALE	1:1	SHEET	2	OF	2	DIST.	

DCS 68360-01

This drawing and specifications herein are the property of Digital Equipment Corporation and shall not be reproduced or copied or used in whole or in part as a basis for the manufacture or sale of items without written permission. © NOV 1972

NOTES:

1. PLACE ITEM #40 (TERMINAL) ON ITEM #25 (RESISTOR) R21.
2. COMPONENT VALUE SELECTED AT MODULE TEST. VALUES IN THE RANGE OF 56K-120K MAY BE USED TO PRODUCE THRESHOLD VOLTAGE CLOSEST TO 370MV AT PIN2 OF E4. POSSIBLE COMPONENTS ARE:
 56K 1302395 100K 1302466
 68K 1301327 120K 1300539
 82K 1303219



QTY	REF DESIGNATION	DESCRIPTION	PART NO.	ITEM NO.
1		INSULATED JUMPER (1/4")	9009105	41
2		SOLDER TERMINAL #2027-2 CAMB.M	4008985	40
2		EYELET GS4-7 STIMPSON	9006732	39
8		PIN SOCKET #1320-1 (MATE N-LOCK)	1209456	38
1		CONN MAT. N-LOCK (6-KEY) 74B-4C	1209340-00	37
1	E3	IC DEC 74H04	1909931	36
1	E1	IC 75453	1911036	35
1	E2	IC 9602	1910951	34
1	E4	IC LM306	1909675	33
4	L1,L2,L3,L4	CHOKE 2.200 JH 10% 99 ma	1603421	32
1	Q1	TRANS DEC 6534B	1503409-01	31
1	Q3	TRANS 2N2904A	1501913	30
1	Q2	TRANS DEC 2219-3	1501801	29
1	R5	RES 180 5% 1/4 W	1301322	28
1	R14	RES 68K 5% 1/4 W	1301327	27
2	R10,R11	RES 10K 1% 1/8 W MF	1302886	26
1	R21	RES 150 5% 5W W/W	1301898	25
2	R3,R18	RES 2.2K 5% 1/4 W	1300417	24
2	R7,R8	RES 10 5% 1 W	1300171	23
1	R22	RES 10 5% 1/4 W	1301317	22
4	R2, R3, R17, R23	RES 47K 5% 1/4 W	1300447	21
2	R4, R15	RES 1K 5% 1/4 W	1300365	20
1	R12	RES 470 5% 1/4 W	1300316	19
1	R6	RES 100 5% 2W	1302380	18
2	R16,R20	RES 150 5% 1/4 W	1300250	17
2	R9,R24	RES 100 5% 1W	1300232	16
1	R19	RES 100 5% 1/4 W	1300229	15
1	D4	DIODE IN 746A 3.6V 5%, 40W	1104842	14
2	D1,D5	DIODE 1N4733A 3.1V, 5%, 1W	1109943	13
2	D2,D3	DIODE 1N4744	1105648	12
5	C4,C5,C6,C7,C16	CAP 6.8UF, 10%, 35V TANT	1005306	11
1	C13	CAP .047UF, 20%, 250V MYLAR	1003053	10
1	C3	CAP 1.0UF, 10%, 35V TANT	1001776	9
5	C15,C12,C14,C10,C9	CAP .01UF, 20%, 50V	1001610-00	8
1	C11	CAP 47PF, 5%, .100V DM	1000011	7
1	C8	CAP .02UF 20% .100V DISC	1000004	6
1	C2	CAP 100PF 5% .100V DM	1000016	5
1		ETCHED CIRCUIT BOARD	5010281	4
REF		MODULE ECO HISTORY	B-MH-6840-0-6	3
REF		ASSY/DRILLING HOLE LAYOUT	D-AH-6840-0-5	2
REF		X-Y COORDINATE HOLE LOCATION	K-CO-6840-0-4	1

SEE NOTE 2-*

IC TYPE	GND	+5V
IC 9602	8	16
IC 75453	4	8

GND AND 5V ARE USUALLY PIN 7 AND 14 RESPECTIVELY. EXCEPTIONS ARE STATED ABOVE.

IC PIN LOCATIONS

FIRST USED ON OPTION MODEL
VT40

ETCH BOARD REV C

REV	DATE	BY	DESCRIPTION
1	11/3/72	Chastan	
2	11/14/72	Chastan	
3	11/14/72	Chastan	
4	11/14/72	Chastan	
5	11/14/72	Chastan	

SEMICONDUCTOR CONVERSION CHART

DEC NO.	EIA NO.	DEC NO.	EIA NO.
DEC 6594B	SAME		
2N2904A	SAME		
DEC 2219-3	SAME		
1N4733A	SAME		
1N746A	SAME		
1N4744	SAME		

SCALE: 1" = 1" OF 2

DATE: 11/3/72

BY: Chastan

TITLE: VT 40 LIGHT PEN AMPLIFIER

PROJECT CODE: DCS 6840-0-1

REVISIONS: 5

ORIGINATED BY: B

CHANGE NO.: 1

REV: 1

DATE: 11/14/72

BY: Chastan

DESCRIPTION: VT 40 LIGHT PEN AMPLIFIER

SCALE: 1" = 1" OF 2

DATE: 11/3/72

BY: Chastan

TITLE: VT 40 LIGHT PEN AMPLIFIER

PROJECT CODE: DCS 6840-0-1

REVISIONS: 5

ORIGINATED BY: B

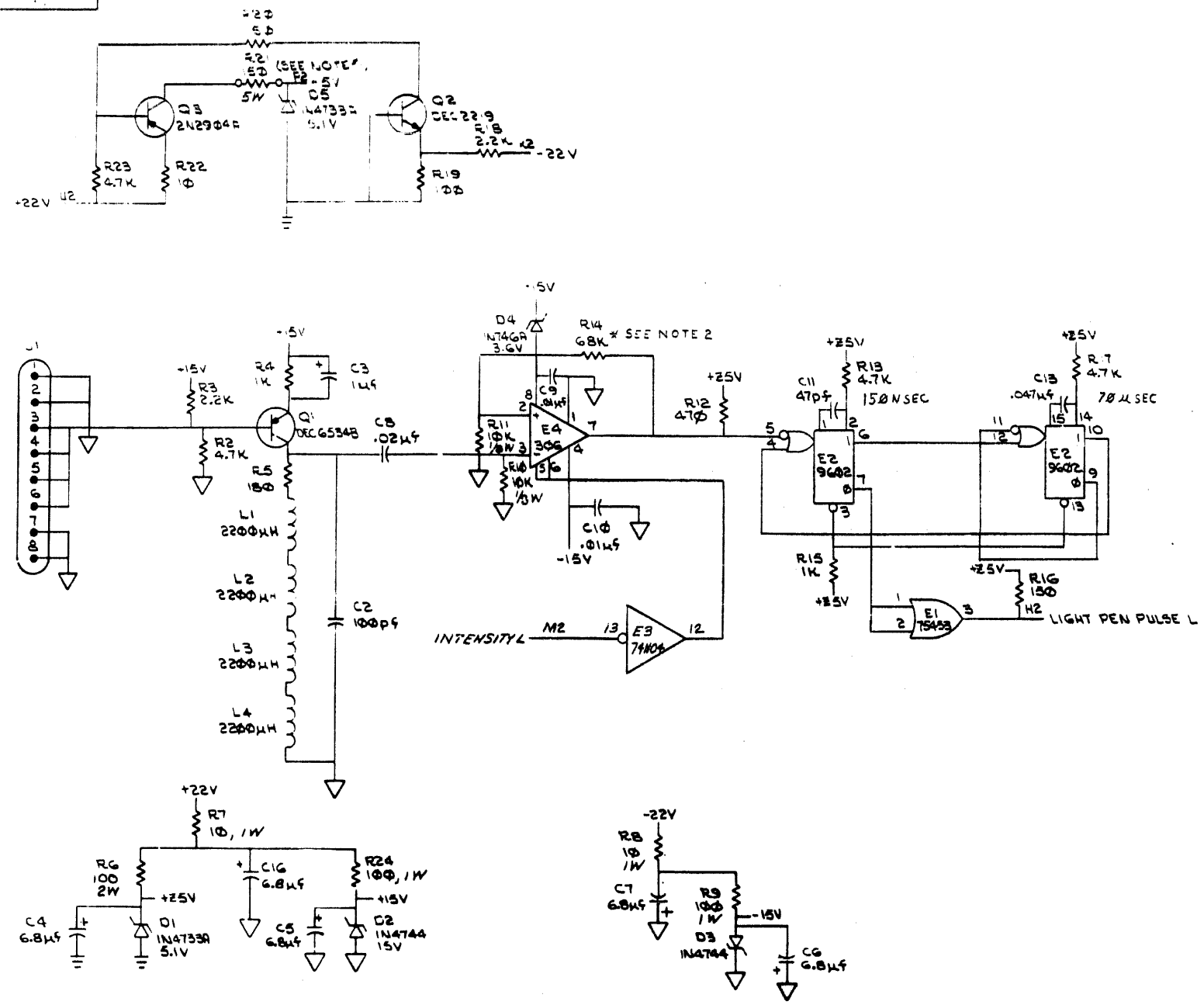
CHANGE NO.: 1

REV: 1

DATE: 11/14/72

BY: Chastan

DESCRIPTION: VT 40 LIGHT PEN AMPLIFIER



REV	
CHANGE NO	
CHK	

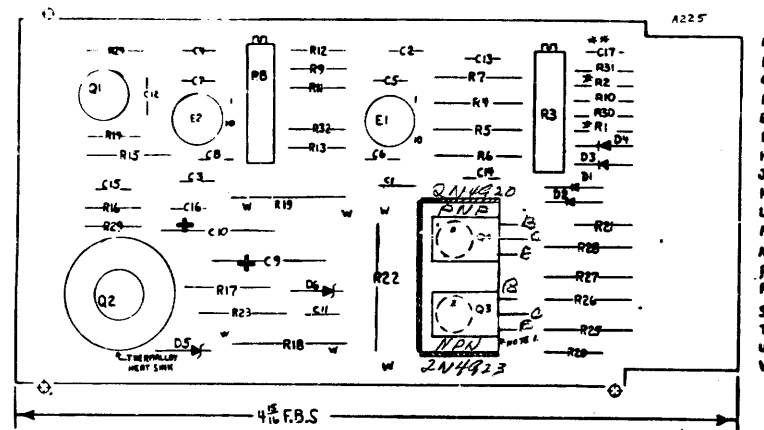
DEC FORM NO DRD 102-R

FIRST USED ON OPTION/MODEL VT40	QTY.	DESCRIPTION	PART NO.	ITEM NO.
PARTS LIST				
UNLESS OTHERWISE SPECIFIED DIMENSION IN INCHES TOLERANCES	DWG DATE 11-7-76	EQUIPMENT CORPORATION MAYNARD MASSACHUSETTS		
DECIMALS	ANGLES	CHK'D DATE 11-7-76	TITLE	
XXX - 008	20' 30"	ENG DATE 11-7-76	VT40 LIGHT PEN AMPLIFIER	
REMOVE BURRS AND BREAK SHARP CORNERS SURFACE QUALITY	PROG DATE	Dwg. No.		
MATERIAL	NEXT HIGHER ASSY.	REV. C		
FINISH	SCALE	DCS G840-0-1		
	SHEET 2 OF 2	DST.		

G840-0-1

NOTES:

- UNLESS OTHERWISE INDICATED:
ALL CAPS ARE 10PF, 100V, 5%
ALL RESISTORS ARE 1K, 1/4W, 5%
ALL DIODES ARE D664
- A225-YA VARIATION - R1 & R2
ARE 3.3K, 1/4W, 5% FOR INPUT
SIGNALS LESS THAN 5VP-P
- ** SELECT C17 FROM
AVAILABLE VALUES (0 TO 100PF)
USING VRI4 L SUB-ASSY DEFLECTION
TEST PROCEDURE 9305731-0-0 FOR
-YB VARIATION ONLY



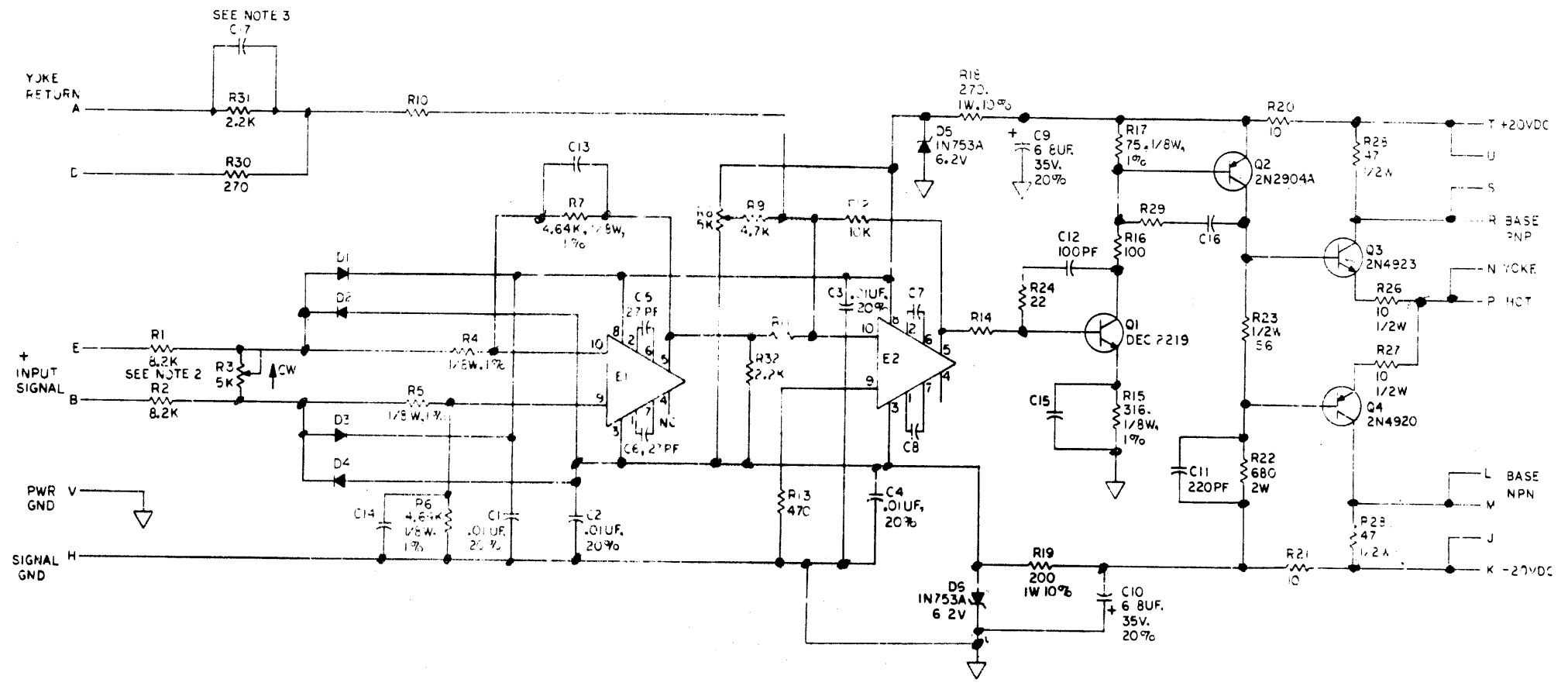
QTY	QTY	QTY	REF DESIGNATION	DESCRIPTION	PART NO	ITEM NO.
A/R	-	-	C17	CAP 100PF 100V 5%	1000016	52
2	2	2		CREW NYLON #4-40 X 3/8L6	9006401-04	53
2	2	2		HEX NUT, NYLON #4-40	9007992	54
A/R	-	-	C17	CAP 82PF, 100V, 5%	1000015	55
A/R	-	-	C17	CAP 33PF, 100V, 5%	1000009	56
A/R	-	-	C17	CAP 47PF, 100V, 5%	1000011	57
A/R	-	-	C17	CAP 68PF, 100V, 5%	1000014	58

QTY	QTY	QTY	REF DESIGNATION	DESCRIPTION	PART NO.	ITEM NO.
				CIRCUIT SCHEMATIC	B-CS-A225-0-1	1
				X-Y COORDINATE HOLE LOCATION	K-CO-A225-0-4	2
				ASSY/DRILLING HOLE LAYOUT	D-AH-A225-0-3	3
				MODULE ECO HISTORY	B-WH-A225-0-8	4
1	1	1		ETCHED CIRCUIT BOARD	5000230	5
6	6	6	C7,8,C13-C18	CAP 10PF 100V 5% DM	1000306	6
1	1	1	C12	CAP 100PF 100V 5% DM	1000016	7
1	1	1	C11	CAP 220PF 100V 5% DM	1000021	8
2	2	2	C9,10	CAP 6.8UF 35V 20% TANT	1000087	9
4	4	4	C1-C4	CAP 31UF 100V 20% DISK	1001810	10
2	2	2	C5,6	CAP 27PF 100V 5% DM	1001739	11
4	4	4	D1-D4	DIODE D664	1100114	12
2	2	2	D5,D6	DIODE IN753A	1102421	13
1	1	1		THERMALLOY W2215B	1205141	14
2	2	2	R20,21	RES 10 1/2W 5% CC	1300160	15
1	1	1	R18	RES 100 1/4W 5% CC	1300229	16
1	1	1	R18	RES 270 1W 10% CC	1300287	17
1	1	1	R13	RES 470 1/4W 5% CC	1300316	18
1	1	1	R22	RES 680 2W 5% CC	1300340	19
4	4	4	R10,11,14,20	RES 1K 1/4W 5% CC	1300385	20
2	2	2	R31,32	RES 2.2K 1/4W 5% CC	1300417	21
0	2	0	R1,2	RES 3.3K 1/4W 5%	1300438	22
1	1	1	R9	RES 4.7K 1/4W 5%	1300447	23
1	1	1	R12	RES 10K 1/4W 5%	1300479	24
2	2	2	R20,21	RES 10 1/4W 5%	1301317	25
2	2	2	R26,R28	RES 47 1/2W 5%	1301896	26
1	1	1	R24	RES 22 1/4W 5%	1301969	27
1	1	1	R30	RES 270 1/4W 5%	1301972	28
1	1	1	R17	RES 75 1/8W 1% MF	1303064	29
2	2	2	R4,5	RES 1K 1/8W 1% MF	1303114	30
2	2	2	R6,7	RES 4.84K 1/8W 1% MF	1304850	31
1	1	1	R16	RES 310 1/8W 1% MF	1304863	32
2	2	2	R3,8	POTENTIOMETER 5K 3/4W 10% P/R	1305143-04	33
1	1	1	B1	TRANS DEC 2218	1901801	34
1	1	1	B2	TRANS 2N4944A	1901813	35
1	1	1	B3	TRANS 2N4823	1900804	36
1	1	1	B4	TRANS 2N4820	1900806	37
2	2	2	E1,2	I.C. 607ANOLA MC18200	1900440	38
1	1	1		HEAT SINK	7400000	39
1	1	1	R23	RES 56 1/2 W 5%	1303995	40
2	2	2		EYELET	9000732	41
A/R	A/R	A/R		WAKEFIELD THERMAL COMPOUND	6005289	42
1	1	1		HANDLE FLIP CHIP AMBER	9000337-0	43
2	2	2		INSULATING WASHER	0000481	44
1	1	1	R19	RES 200 1W 10%	1300471	45
2	0	2	R1,R2	0.2K 1/4W 5%	1303178	46
A/R	B	B	C17	100PF 100V 5% DM CAP	1000020	48
A/R	-	-	C17	150 PF 100V 5% CAP	1000019	50
A/R	-	-	C17	120 PF 100V 5% CAP	1000018	51

IC TYPE	QTY	REV
74181	1	1
74182	1	1
74183	1	1
74184	1	1
74185	1	1
74186	1	1
74187	1	1
74188	1	1
74189	1	1
74190	1	1
74191	1	1
74192	1	1
74193	1	1
74194	1	1
74195	1	1
74196	1	1
74197	1	1
74198	1	1
74199	1	1
74200	1	1

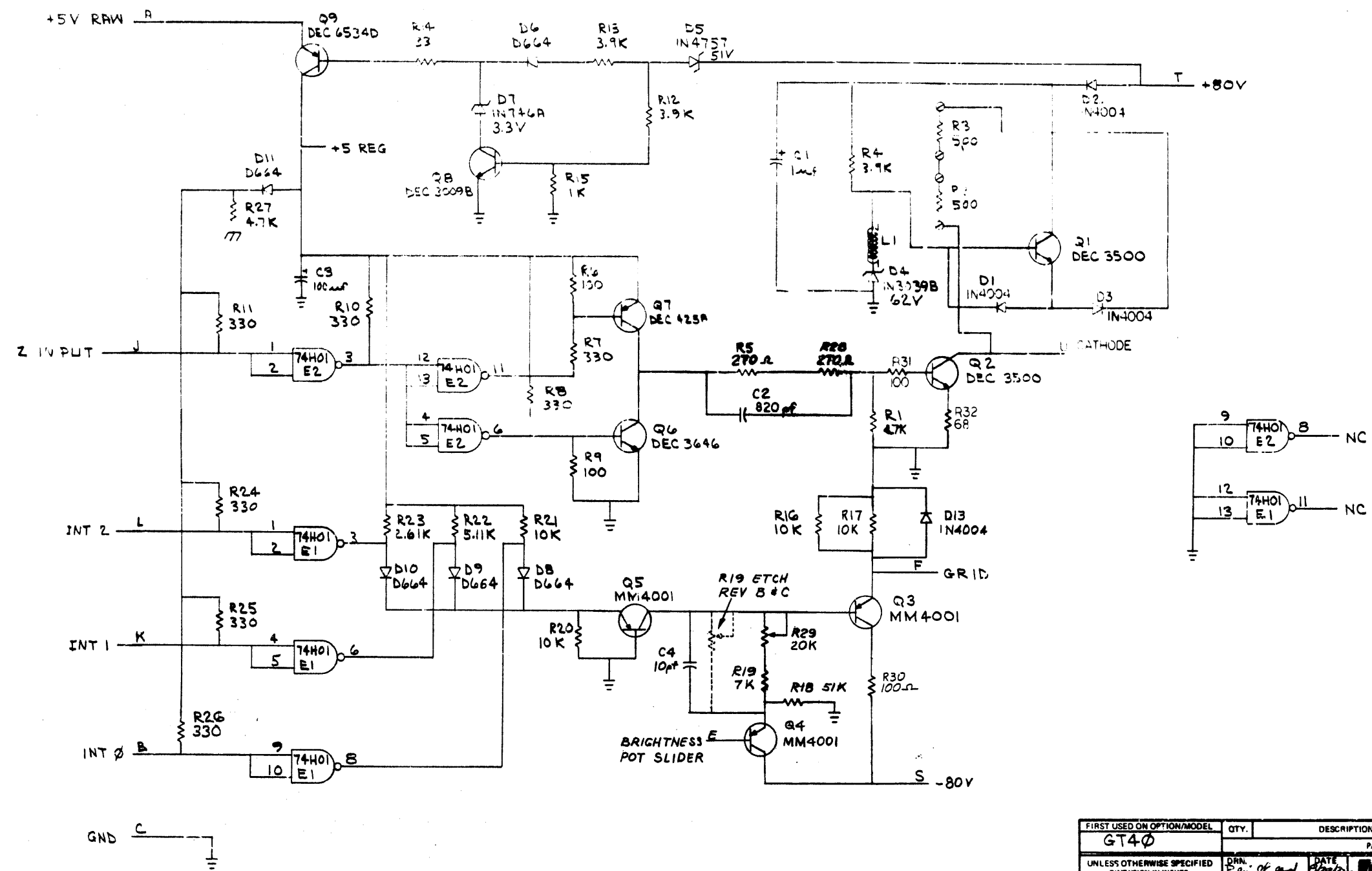
REV	DATE	BY	DESCRIPTION
1	3-8-73	H. Lavoie	INITIAL DESIGN
2	9-11-73	H. Lavoie	REVISED FOR MANUFACTURE
3	10-10-73	H. Lavoie	REVISED FOR MANUFACTURE
4	11-15-73	H. Lavoie	REVISED FOR MANUFACTURE
5	12-15-73	H. Lavoie	REVISED FOR MANUFACTURE
6	1-15-74	H. Lavoie	REVISED FOR MANUFACTURE
7	2-15-74	H. Lavoie	REVISED FOR MANUFACTURE
8	3-15-74	H. Lavoie	REVISED FOR MANUFACTURE
9	4-15-74	H. Lavoie	REVISED FOR MANUFACTURE
10	5-15-74	H. Lavoie	REVISED FOR MANUFACTURE
11	6-15-74	H. Lavoie	REVISED FOR MANUFACTURE
12	7-15-74	H. Lavoie	REVISED FOR MANUFACTURE
13	8-15-74	H. Lavoie	REVISED FOR MANUFACTURE
14	9-15-74	H. Lavoie	REVISED FOR MANUFACTURE
15	10-15-74	H. Lavoie	REVISED FOR MANUFACTURE
16	11-15-74	H. Lavoie	REVISED FOR MANUFACTURE
17	12-15-74	H. Lavoie	REVISED FOR MANUFACTURE
18	1-15-75	H. Lavoie	REVISED FOR MANUFACTURE
19	2-15-75	H. Lavoie	REVISED FOR MANUFACTURE
20	3-15-75	H. Lavoie	REVISED FOR MANUFACTURE
21	4-15-75	H. Lavoie	REVISED FOR MANUFACTURE
22	5-15-75	H. Lavoie	REVISED FOR MANUFACTURE
23	6-15-75	H. Lavoie	REVISED FOR MANUFACTURE
24	7-15-75	H. Lavoie	REVISED FOR MANUFACTURE
25	8-15-75	H. Lavoie	REVISED FOR MANUFACTURE
26	9-15-75	H. Lavoie	REVISED FOR MANUFACTURE
27	10-15-75	H. Lavoie	REVISED FOR MANUFACTURE
28	11-15-75	H. Lavoie	REVISED FOR MANUFACTURE
29	12-15-75	H. Lavoie	REVISED FOR MANUFACTURE
30	1-15-76	H. Lavoie	REVISED FOR MANUFACTURE
31	2-15-76	H. Lavoie	REVISED FOR MANUFACTURE
32	3-15-76	H. Lavoie	REVISED FOR MANUFACTURE
33	4-15-76	H. Lavoie	REVISED FOR MANUFACTURE
34	5-15-76	H. Lavoie	REVISED FOR MANUFACTURE
35	6-15-76	H. Lavoie	REVISED FOR MANUFACTURE
36	7-15-76	H. Lavoie	REVISED FOR MANUFACTURE
37	8-15-76	H. Lavoie	REVISED FOR MANUFACTURE
38	9-15-76	H. Lavoie	REVISED FOR MANUFACTURE
39	10-15-76	H. Lavoie	REVISED FOR MANUFACTURE
40	11-15-76	H. Lavoie	REVISED FOR MANUFACTURE
41	12-15-76	H. Lavoie	REVISED FOR MANUFACTURE
42	1-15-77	H. Lavoie	REVISED FOR MANUFACTURE
43	2-15-77	H. Lavoie	REVISED FOR MANUFACTURE
44	3-15-77	H. Lavoie	REVISED FOR MANUFACTURE
45	4-15-77	H. Lavoie	REVISED FOR MANUFACTURE
46	5-15-77	H. Lavoie	REVISED FOR MANUFACTURE
47	6-15-77	H. Lavoie	REVISED FOR MANUFACTURE
48	7-15-77	H. Lavoie	REVISED FOR MANUFACTURE
49	8-15-77	H. Lavoie	REVISED FOR MANUFACTURE
50	9-15-77	H. Lavoie	REVISED FOR MANUFACTURE
51	10-15-77	H. Lavoie	REVISED FOR MANUFACTURE
52	11-15-77	H. Lavoie	REVISED FOR MANUFACTURE
53	12-15-77	H. Lavoie	REVISED FOR MANUFACTURE
54	1-15-78	H. Lavoie	REVISED FOR MANUFACTURE
55	2-15-78	H. Lavoie	REVISED FOR MANUFACTURE
56	3-15-78	H. Lavoie	REVISED FOR MANUFACTURE
57	4-15-78	H. Lavoie	REVISED FOR MANUFACTURE
58	5-15-78	H. Lavoie	REVISED FOR MANUFACTURE
59	6-15-78	H. Lavoie	REVISED FOR MANUFACTURE
60	7-15-78	H. Lavoie	REVISED FOR MANUFACTURE
61	8-15-78	H. Lavoie	REVISED FOR MANUFACTURE
62	9-15-78	H. Lavoie	REVISED FOR MANUFACTURE
63	10-15-78	H. Lavoie	REVISED FOR MANUFACTURE
64	11-15-78	H. Lavoie	REVISED FOR MANUFACTURE
65	12-15-78	H. Lavoie	REVISED FOR MANUFACTURE
66	1-15-79	H. Lavoie	REVISED FOR MANUFACTURE
67	2-15-79	H. Lavoie	REVISED FOR MANUFACTURE
68	3-15-79	H. Lavoie	REVISED FOR MANUFACTURE
69	4-15-79	H. Lavoie	REVISED FOR MANUFACTURE
70	5-15-79	H. Lavoie	REVISED FOR MANUFACTURE
71	6-15-79	H. Lavoie	REVISED FOR MANUFACTURE
72	7-15-79	H. Lavoie	REVISED FOR MANUFACTURE
73	8-15-79	H. Lavoie	REVISED FOR MANUFACTURE
74	9-15-79	H. Lavoie	REVISED FOR MANUFACTURE
75	10-15-79	H. Lavoie	REVISED FOR MANUFACTURE
76	11-15-79	H. Lavoie	REVISED FOR MANUFACTURE
77	12-15-79	H. Lavoie	REVISED FOR MANUFACTURE
78	1-15-80	H. Lavoie	REVISED FOR MANUFACTURE
79	2-15-80	H. Lavoie	REVISED FOR MANUFACTURE
80	3-15-80	H. Lavoie	REVISED FOR MANUFACTURE
81	4-15-80	H. Lavoie	REVISED FOR MANUFACTURE
82	5-15-80	H. Lavoie	REVISED FOR MANUFACTURE
83	6-15-80	H. Lavoie	REVISED FOR MANUFACTURE
84	7-15-80	H. Lavoie	REVISED FOR MANUFACTURE
85	8-15-80	H. Lavoie	REVISED FOR MANUFACTURE
86	9-15-80	H. Lavoie	REVISED FOR MANUFACTURE
87	10-15-80	H. Lavoie	REVISED FOR MANUFACTURE
88	11-15-80	H. Lavoie	REVISED FOR MANUFACTURE
89	12-15-80	H. Lavoie	REVISED FOR MANUFACTURE
90	1-15-81	H. Lavoie	REVISED FOR MANUFACTURE
91	2-15-81	H. Lavoie	REVISED FOR MANUFACTURE
92	3-15-81	H. Lavoie	REVISED FOR MANUFACTURE
93	4-15-81	H. Lavoie	REVISED FOR MANUFACTURE
94	5-15-81	H. Lavoie	REVISED FOR MANUFACTURE
95	6-15-81	H. Lavoie	REVISED FOR MANUFACTURE
96	7-15-81	H. Lavoie	REVISED FOR MANUFACTURE
97	8-15-81	H. Lavoie	REVISED FOR MANUFACTURE
98	9-15-81	H. Lavoie	REVISED FOR MANUFACTURE
99	10-15-81	H. Lavoie	REVISED FOR MANUFACTURE
100	11-15-81	H. Lavoie	REVISED FOR MANUFACTURE
101	12-15-81	H. Lavoie	REVISED FOR MANUFACTURE
102	1-15-82	H. Lavoie	REVISED FOR MANUFACTURE
103	2-15-82	H. Lavoie	REVISED FOR MANUFACTURE
104	3-15-82	H. Lavoie	REVISED FOR MANUFACTURE
105	4-15-82	H. Lavoie	REVISED FOR MANUFACTURE
106	5-15-82	H. Lavoie	REVISED FOR MANUFACTURE
107	6-15-82	H. Lavoie	REVISED FOR MANUFACTURE
108	7-15-82	H. Lavoie	REVISED FOR MANUFACTURE
109	8-15-82	H. Lavoie	REVISED FOR MANUFACTURE
110	9-15-82	H. Lavoie	REVISED FOR MANUFACTURE
111	10-15-82	H. Lavoie	REVISED FOR MANUFACTURE
112	11-15-82	H. Lavoie	REVISED FOR MANUFACTURE
113	12-15-82	H. Lavoie	REVISED FOR MANUFACTURE
114	1-15-83	H. Lavoie	REVISED FOR MANUFACTURE
115	2-15-83	H. Lavoie	REVISED FOR MANUFACTURE
116	3-15-83	H. Lavoie	REVISED FOR MANUFACTURE
117	4-15-83	H. Lavoie	REVISED FOR MANUFACTURE
118	5-15-83	H. Lavoie	REVISED FOR MANUFACTURE
119	6-15-83	H. Lavoie	REVISED FOR MANUFACTURE
120	7-15-83	H. Lavoie	REVISED FOR MANUFACTURE
121	8-15-83	H. Lavoie	REVISED FOR MANUFACTURE
122	9-15-83	H. Lavoie	REVISED FOR MANUFACTURE
123	10-15-83	H. Lavoie	REVISED FOR MANUFACTURE
124	11-15-83	H. Lavoie	REVISED FOR MANUFACTURE
125	12-15-83	H. Lavoie	REVISED FOR MANUFACTURE
126	1-15-84	H. Lavoie	REVISED FOR MANUFACTURE
127	2-15-84	H. Lavoie	REVISED FOR MANUFACTURE
128	3-15-84	H. Lavoie	REVISED FOR MANUFACTURE
129	4-15-84	H. Lavoie	REVISED FOR MANUFACTURE
130	5-15-84	H. Lavoie	REVISED FOR MANUFACTURE
131	6-15-84	H. Lavoie	REVISED FOR MANUFACTURE
132	7-15-84	H. Lavoie	REVISED FOR MANUFACTURE
133	8-15-84	H. Lavoie	REVISED FOR MANUFACTURE
134	9-15-84	H. Lavoie	REVISED FOR MANUFACTURE
135	10-15-84	H. Lavoie	REVISED FOR MANUFACTURE

ALL DIMENSIONS AND SPECIFICATIONS HEREIN ARE THE PROPERTY OF DIGITAL EQUIPMENT CORPORATION, AND SHALL NOT BE REPRODUCED OR COPIED OR USED IN WHOLE OR IN PART AS THE BASIS FOR THE MANUFACTURE OR SALE OF ANY EQUIPMENT WITHOUT WRITTEN PERMISSION FROM DIGITAL EQUIPMENT CORPORATION.



REVISIONS		
CHK	CHANGE NO	REV

The drawing and specifications herein are the property of Digital Equipment Corporation and shall not be reproduced or copied in whole or in part without written permission.



REV	CHANGE NO

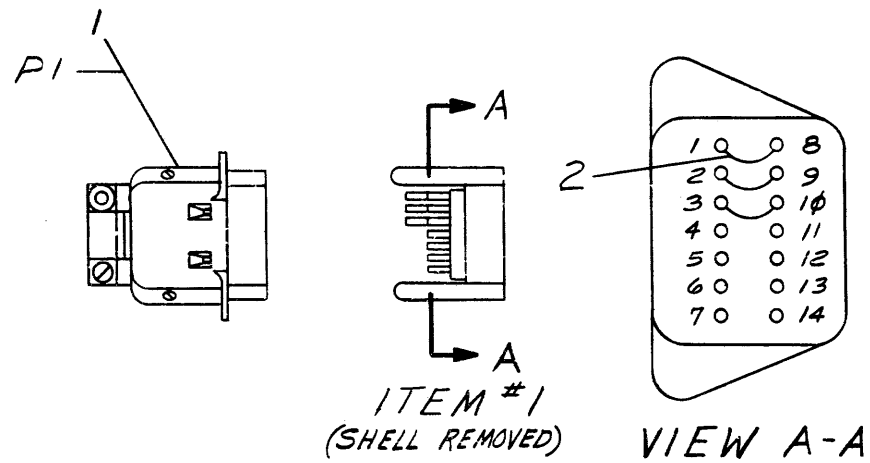
FIRST USED ON OPTION/MODEL	QTY.	DESCRIPTION	PART NO.	ITEM NO.
GT40				
PARTS LIST				
UNLESS OTHERWISE SPECIFIED DIMENSION IN INCHES TOLERANCES		DATE	EQUIPMENT CORPORATION	
DECIMALS	ANGLES			
REMOVE BURRS AND BREAK SHARP CORNERS SURFACE QUALITY			TITLE	
MATERIAL			UNBLANK AMP & 8 LEV INTEN CONT	
FINISH			DCS W684-0-1 H	
SCALE				
SHEET 2 OF 2				

DCS W684-0-1 H

This drawing and specifications, herein, are the property of Digital Equipment Corporation and shall not be reproduced or copied or used in whole or in part as the basis for the manufacture or sale of items without written permission. © JAN. 73

WIRE TABLE

ITEM NO.	DESCRIPTION		FROM		TO	
	AWG	COLOR	CONNECTION	WITH	CONNECTION	WITH
2	24	RED	PI-1	SOL.	PI-8	SOL.
2	24	RED	PI-2	SOL.	PI-9	SOL.
2	24	RED	PI-3	SOL.	PI-10	SOL.



REVISIONS	
CHK	CHANGE NO. REV.
P.M.	7009248-00001 A
	Ernie A. 6-5-73
	D. CRABBE 6-14-73

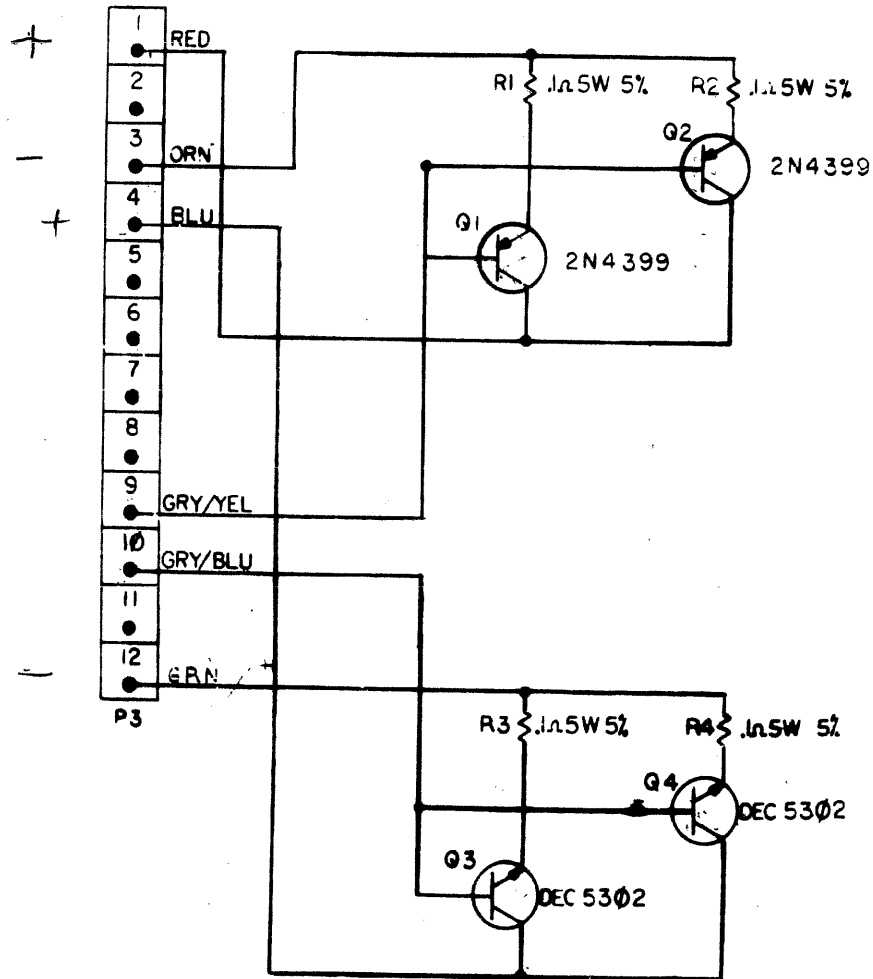
DEC FORM NO. DRC 10-A

NR WIRE #24AWG. STRD. RED	9107450-22	2
1 CONN. AMP. 57-3014.0	1205713	1

FIRST USED ON OPTION/MODEL	QTY.	DESCRIPTION	PART NO.	ITEM NO.
GT40				
PARTS LIST				
UNLESS OTHERWISE SPECIFIED DIMENSION IN INCHES. TOLERANCES		DRN. <i>[Signature]</i> DATE 1-22-73	digital EQUIPMENT CORPORATION MAYNARD, MASSACHUSETTS	
DECIMALS	ANGLES	CHKD. <i>[Signature]</i> DATE 1-25-73		
.XX = .005	±0° 30'	ENG. <i>[Signature]</i> DATE 2-2-73	TITLE CABLE, KEYBD. INTERLOCK	
.XX = .02		PROG. ENG. <i>[Signature]</i> DATE 2-2-73		
.X = .1		PRD. <i>[Signature]</i> DATE 2-8-73		
REMOVE BURRS AND BREAK SHARP CORNERS SURFACE QUALITY ✓		NEXT HIGHER ASSY.		
MATERIAL		A-PL-GT40-0-0	SIZE CODE C I A	NUMBER 7009248-0-0
FINISH		SCALE NONE		REV. A
		SHEET / OF /	DIST.	

SIZE CODE C I A 7009248-0-0 REV. A
 NUMBER 7009248-0-0

This drawing and specifications, herein, are the property of Digital Equipment Corporation and shall not be reproduced or copied or used in whole or in part as the basis for the manufacture or sale of items without written permission. © 1973



REF DESIGNATION	DESCRIPTION	PART NO.
P3	AMP I2 CIRCUIT	1209351-12
Q1 Q2	TRANSISTOR 2N4399	1510362
Q3, Q4	TRANSISTOR DEC 5302	1510196
R1 - R4	RESISTOR .1n5W 5%	1305812

REV	NO	DATE	BY	CHKD
1	A	1/19/77	A. FISHMAN	
2	B	2-20-77	H. LAVOIE	
3	C	12-13-77	H. LAVOIE	
4	D	12-27-77	H. LAVOIE	

FRS1 USED ON OPTION MODEL
VRI4

UNLESS OTHERWISE SPECIFIED
DIMENSIONS IN INCHES
TOLERANCES
FRACTIONS DECIMALS ANGLES
±.005 ±.005 ±.005
FUEL SURFACE QUALITY
REMOVE BURRS AND CHECK SWAG
CORNER

PARTS LIST

EQUIPMENT CORPORATION
MAYNARD, MASSACHUSETTS

TITLE
POWER SUPPLY HEAT SINK

DATE: 5/21/70
DATE: 12/14/70
DATE: 11/6/70
DATE: 11/16/70

NEXT HIGHER ASSY
D-AU-7007080-0-0

SCALE: 1:1

SHEET 1 OF 1

REV. CODE: C
REV. NUMBER: 1
REV. DATE: 11/16/70

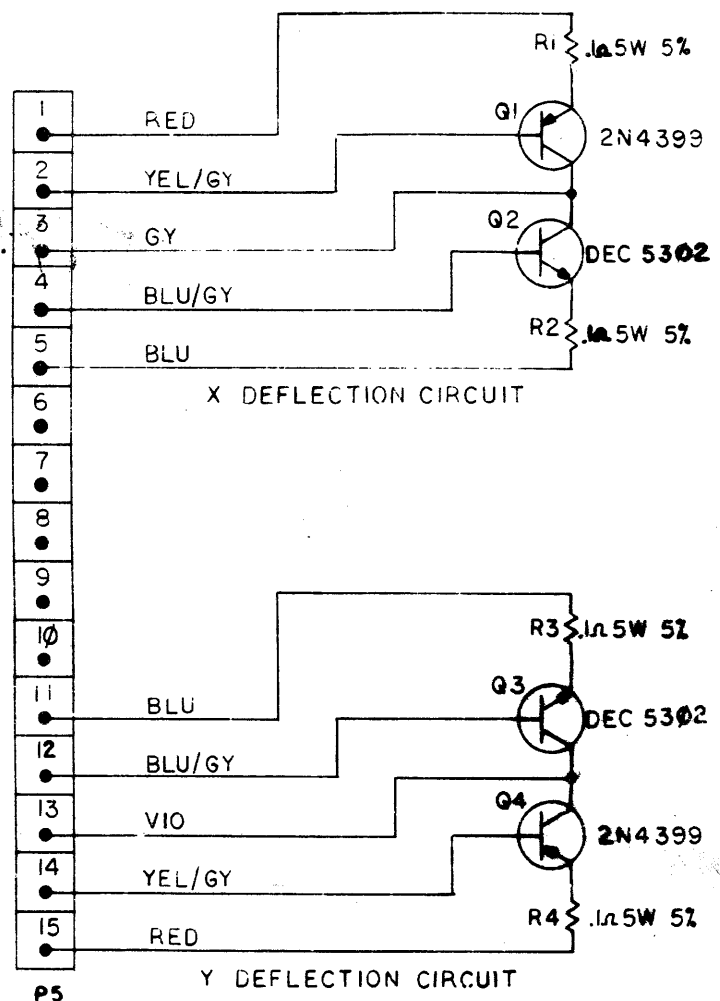
CS 7007080-0-1 C

TRANSISTOR/DIODE CONVERSION CHART

DEC	EIA	DEC	EIA
DEC 5302	2N 5302		
DEC 3750	2N 3750		

CS 7007080-0-1 C

This drawing and specifications, herein, are the property of Digital Equipment Corporation and shall not be reproduced, stored in a retrieval system, or transmitted in any form or by any means, electronic, mechanical, photocopying, recording, or by any information storage and retrieval system, without written permission.



Q2, Q3.	TRANSISTOR DEC 5302	1510196
P5	AMP 15-CIRCUIT	1209351-15
Q1, Q4.	TRANSISTOR 2N4399	1510362
R1-R4	RESISTOR .1n5W 5%	1305872
REF DESIGNATION	DESCRIPTION	PART NO.

REV.	REV.
CHANGE NO.	REV.
VRI4-0005 A	
A. FISHMAN 4/17/71	
H. LAYOR 9-2-71	
3.817007082-00001 B	
12/20/73	
18-20-73 DP	

TRANSISTOR/DIODE CONVERSION CHART			
DEC	EIA	DEC	EIA
DEC 3790	2N 3790		
DEC 5302	2N 5302		

FIRST USED ON OPTION/MODEL
VRI4

UNLESS OTHERWISE SPECIFIED
DIMENSIONS IN INCHES
TOLERANCES
DIMENSIONAL FINISHES ANGLES
± .005 ± .004 ± 0°20'
FINE SURFACE QUALITY
REMOVE BURRS AND SHARP EDGES

DATE: 7/24/72
BY: [Signature]
CHECKED: [Signature]
APPROVED: [Signature]
NEXT HIGHER ASSY
D-AD7007082-0-0

EQUIPMENT CORPORATION
MAYNARD, MASSACHUSETTS

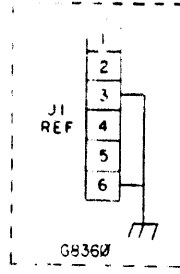
DEFLECTION
HEAT SINK.

GCS7007082-0-1

GCS7007082-0-1

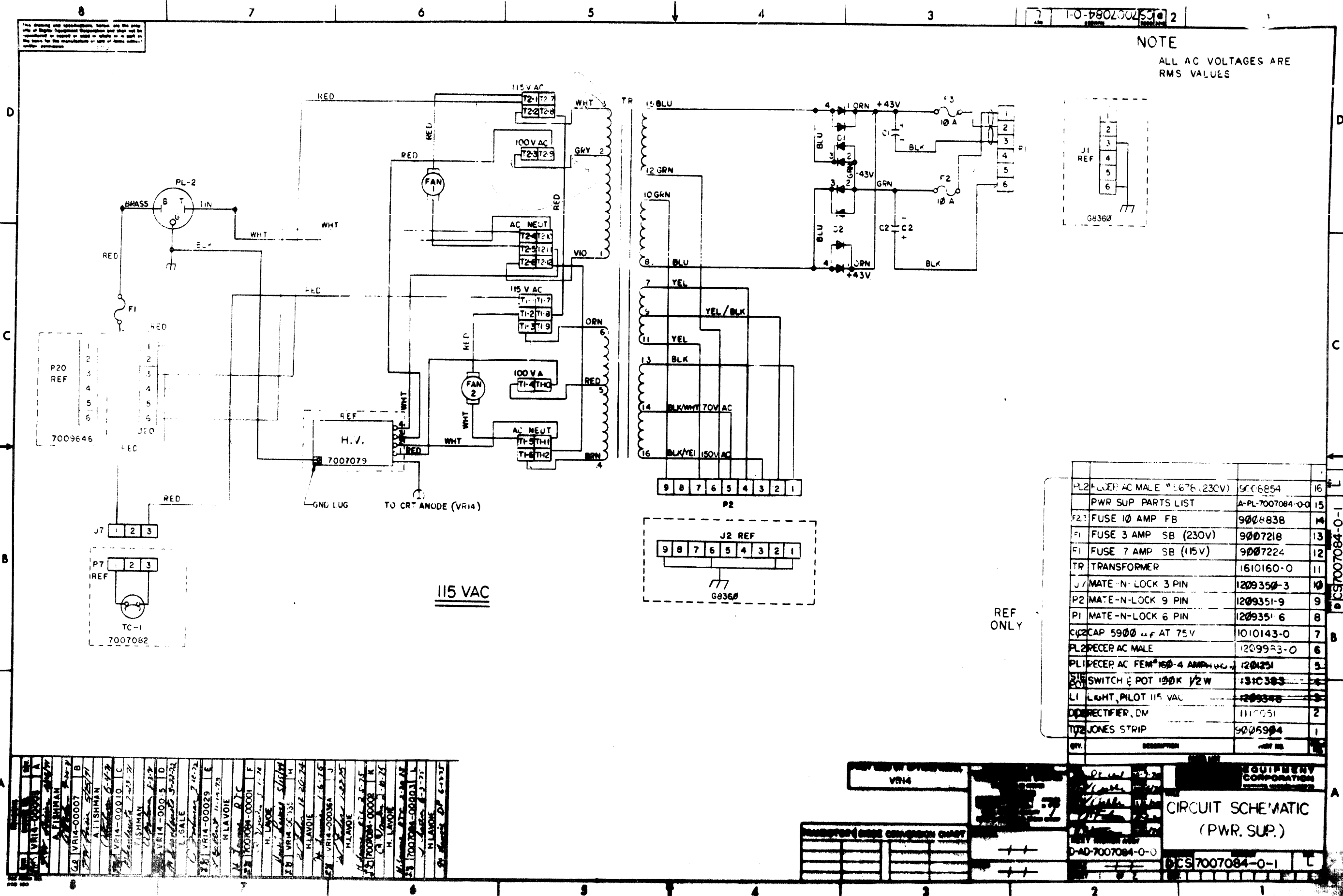
NOTE

ALL AC VOLTAGES ARE RMS VALUES



PL2	PLUG AC MALE #1676 (230V)	9006854	16
PWR SUP PARTS LIST A-PL-7007084-0-0			
F2	FUSE 10 AMP FB	9006838	14
F1	FUSE 3 AMP SB (230V)	9007218	13
F1	FUSE 7 AMP SB (115V)	9007224	12
TR	TRANSFORMER	1610160-0	11
J1	MATE-N-LOCK 3 PIN	1209350-3	10
P2	MATE-N-LOCK 9 PIN	1209351-9	9
P1	MATE-N-LOCK 6 PIN	1209351-6	8
C1	CAP 5900 μ F AT 75V	1010143-0	7
PL2	RECEP AC MALE	1209923-0	6
PL1	RECEP AC FEM #160-4 AMP	1201251	5
SW	SWITCH & POT 100K 1/2W	1310363	4
LI	LAMP, PILOT 115 VAC	1209348	3
DI	DIODE RECTIFIER, DM	1110051	2
TJ2	JONES STRIP	9006904	1
QTY.	DESCRIPTION	AVAIL.	

REF ONLY

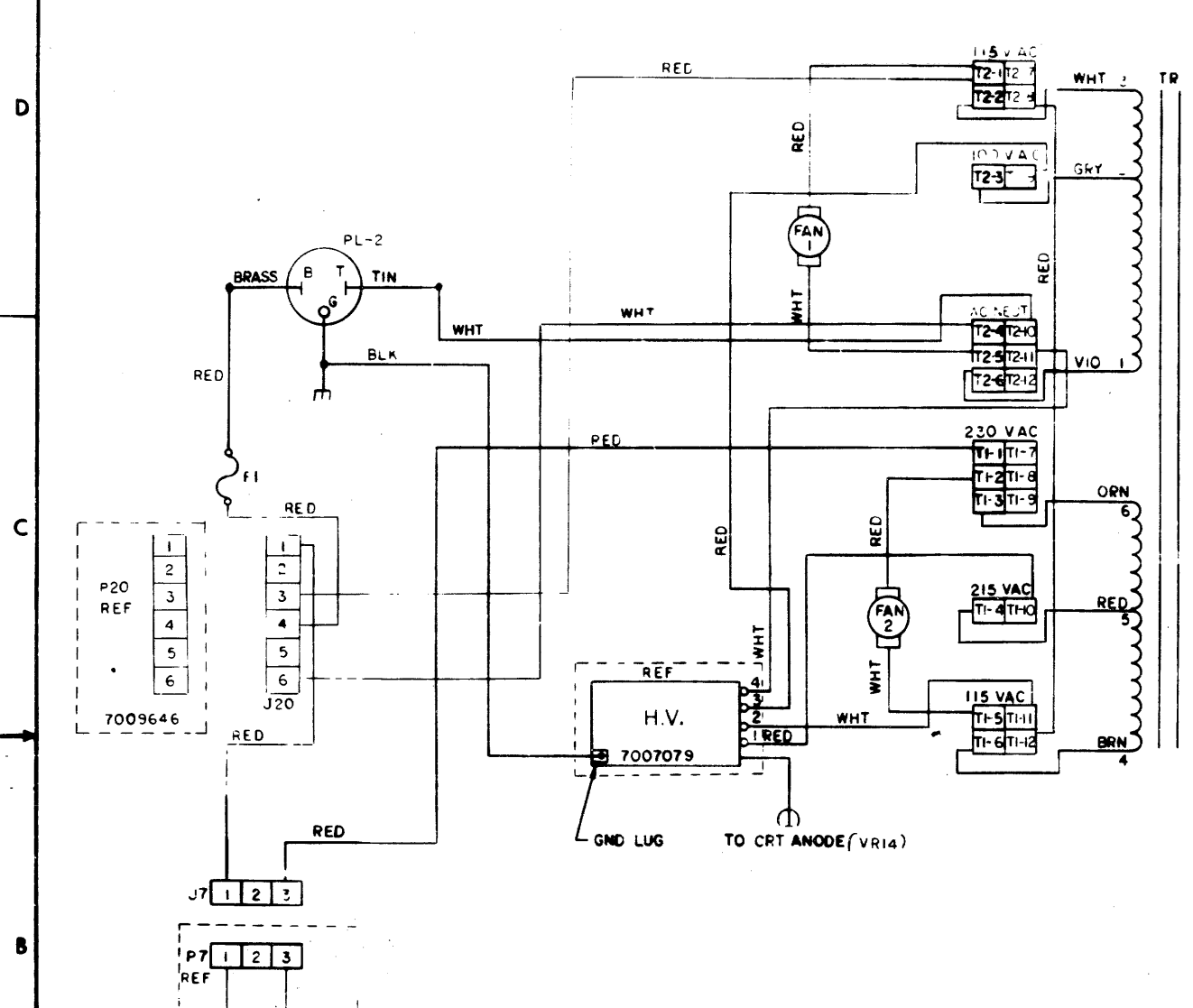


VR14	CRT ANODE	1610160-0
PL-2	PLUG AC MALE #1676 (230V)	9006854
F1	FUSE 3 AMP SB (230V)	9007218
F1	FUSE 7 AMP SB (115V)	9007224
TR	TRANSFORMER	1610160-0
J1	MATE-N-LOCK 3 PIN	1209350-3
P2	MATE-N-LOCK 9 PIN	1209351-9
P1	MATE-N-LOCK 6 PIN	1209351-6
C1	CAP 5900 μ F AT 75V	1010143-0
PL2	RECEP AC MALE	1209923-0
PL1	RECEP AC FEM #160-4 AMP	1201251
SW	SWITCH & POT 100K 1/2W	1310363
LI	LAMP, PILOT 115 VAC	1209348
DI	DIODE RECTIFIER, DM	1110051
TJ2	JONES STRIP	9006904

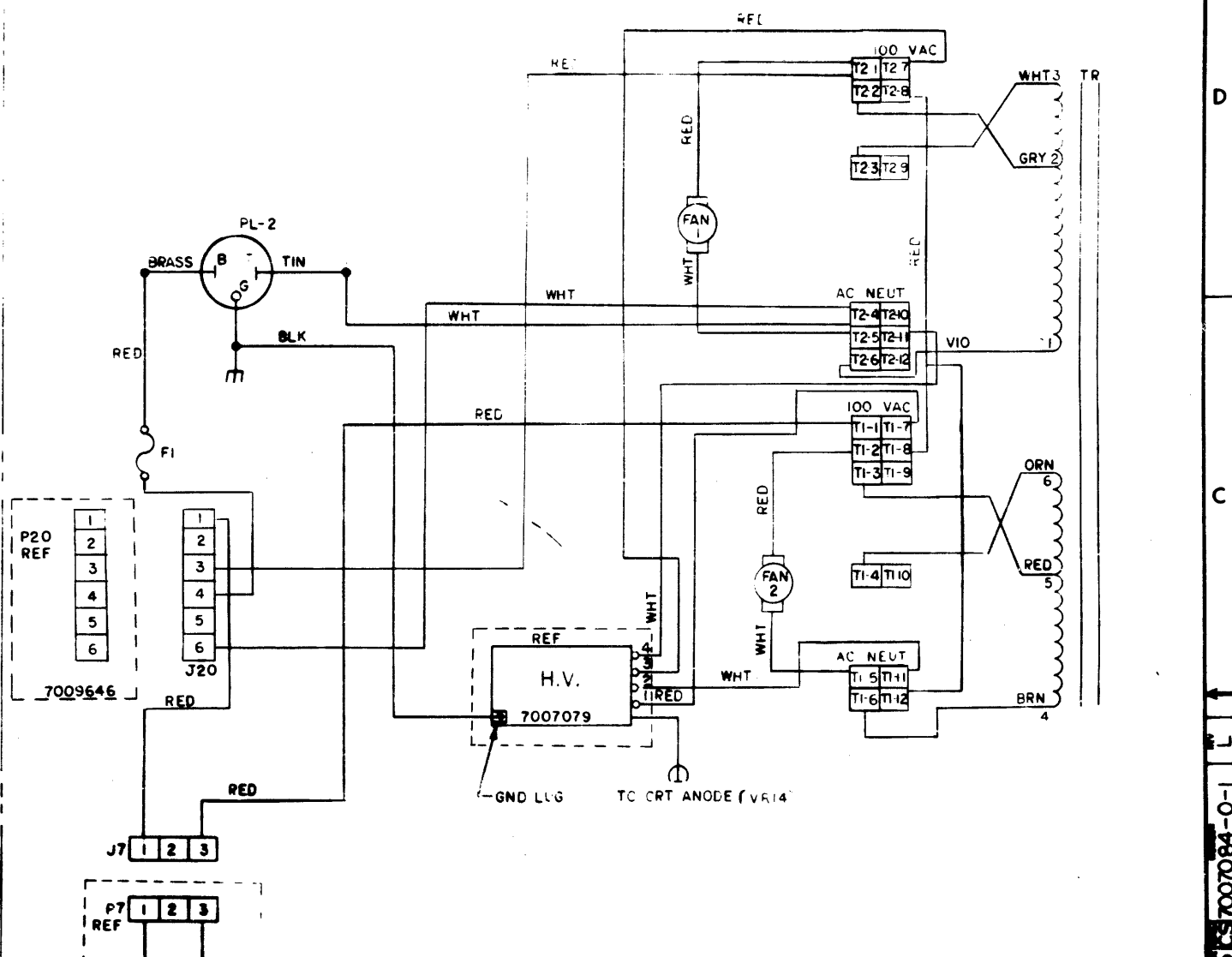
CIRCUIT SCHEMATIC (PWR. SUP.)

CS7007084-0-1

The drawing is the property of the U.S. Army and is loaned to you for your information and use only. It is not to be reproduced or stored in a retrieval system without the express written permission of the Army.



230 VAC
 NOTE:
 ALL AC VOLTAGES
 ARE RMS VALUES



100 VAC
 NOTE:
 ALL AC VOLTAGES
 ARE RMS VALUES

REF ID: VR14	DESCRIPTION: [REDACTED]	REV. NO.:
CIRCUIT SCHEMATIC (PWR. SUP.)		
D-40-X-7084-0-0		
7007084-0-1		

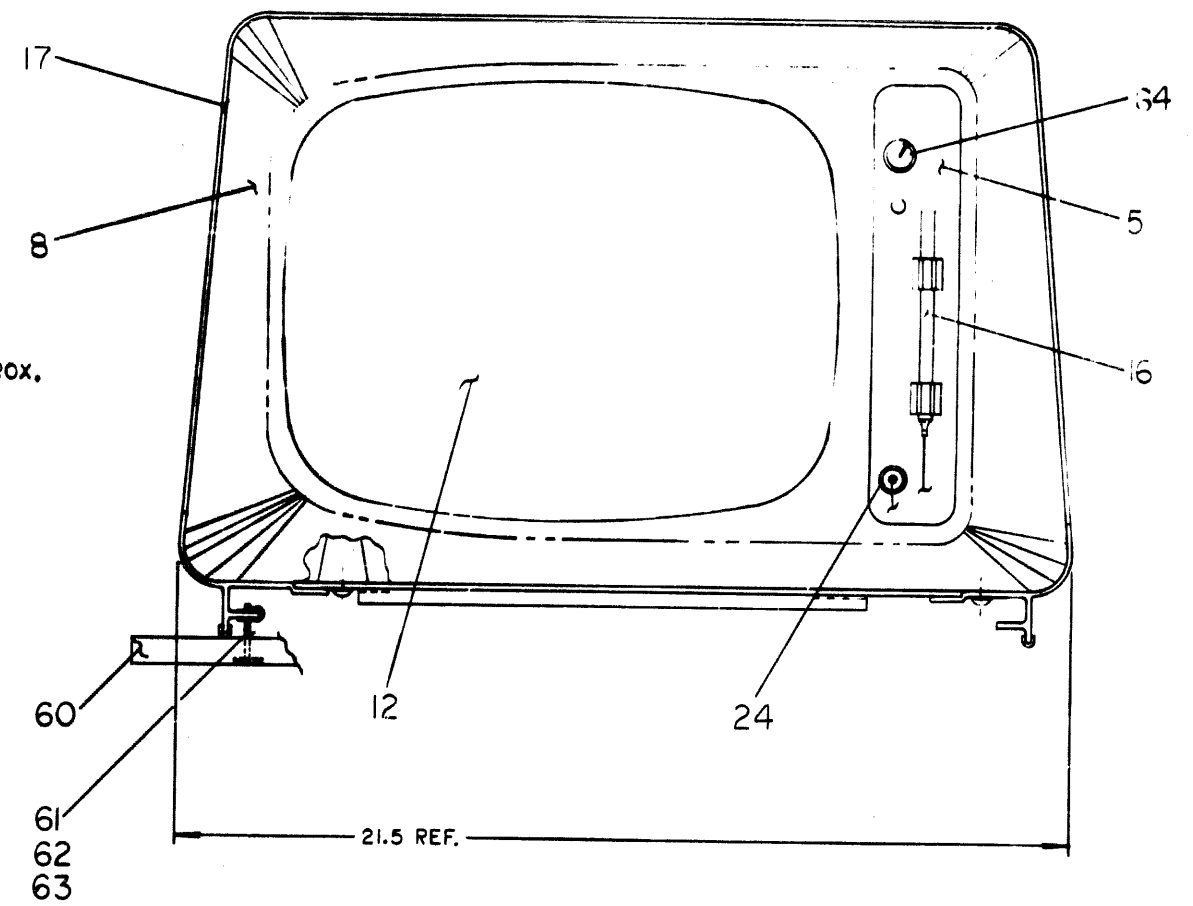
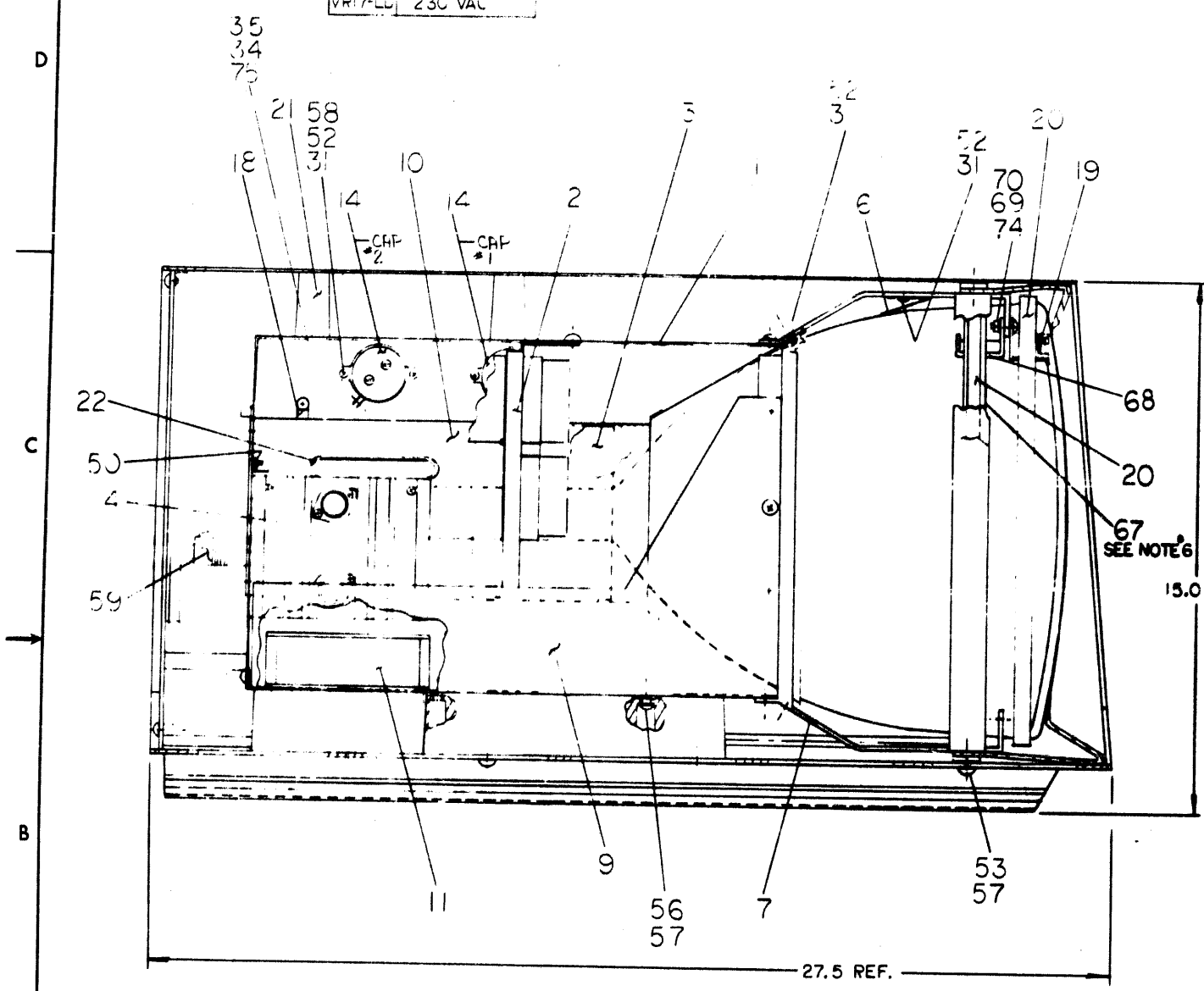
THIS DRAWING AND SPECIFICATIONS HEREIN ARE THE PROPERTY OF DIGITAL EQUIPMENT CORPORATION AND SHALL NOT BE REPRODUCED OR COPIED OR USED IN WHOLE OR IN PART AS THE BASIS FOR THE MANUFACTURE OR SALE OF ITEMS WITHOUT WRITTEN PERMISSION.
COPYRIGHT © 1967 DIGITAL EQUIPMENT CORPORATION

LEGEND	
NO.	VARIATION
VR17-LC	115 VAC
VR17-LE	230 VAC

- NOTES:
1. PLACE SHRINKIES, ITEM #36 ON POT-A, POT-B, & POT-C.
 2. G840 LIGHT PEN.
 3. CONNECT BLK WIRE ITEM #47 WITH ITEMS # 48, 49 & 36 FROM TOP BOARD OF CONTROL PANEL TO GND LUG ON HI VOLTAGE SUPPLY.
 - ~~4. ROTATE YOKE (SYNTRONIC) SO THAT POINTS 3 & 4 ARE LOCATED ON TOP.~~
 - ~~5. ADD SPIRAL WRAP ITEM #23 R/R TO HARNESS. ADD WRAP WHERE HARNESS BENDS UNDER SHIELD.~~

6. RUBBER STRIP WILL BE PLACED IN POSITION UNDER TIGHTENING STRAP AND TUBE CLAMPS. THIS SHOULD ELIMINATE SLIPAGE OF THE TUBE. THERE IS AN ADHESIVE BACKING ON THE RUBBER STRIP SO THERE WILL BE NO NEED TO HOLD IT IN PLACE WHILE ASSEMBLING OTHER PARTS. RUBBER STRIP WILL ONLY BE USED ON SECOND SET OF HOLDING TABS NEAREST THE BACK. FRONT TUBE CLAMPS WILL NOT USE RUBBER STRIP.

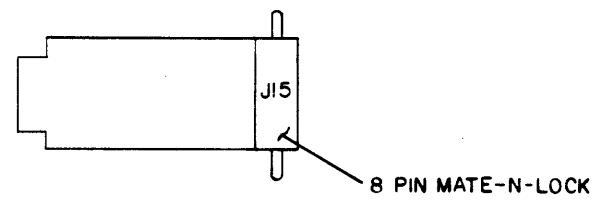
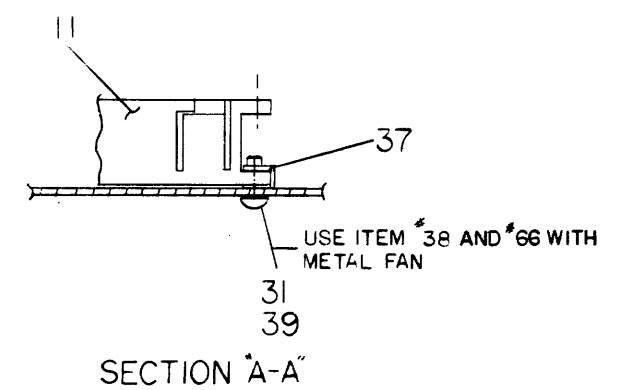
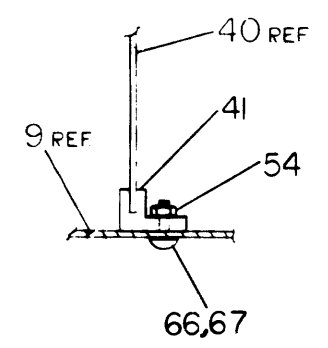
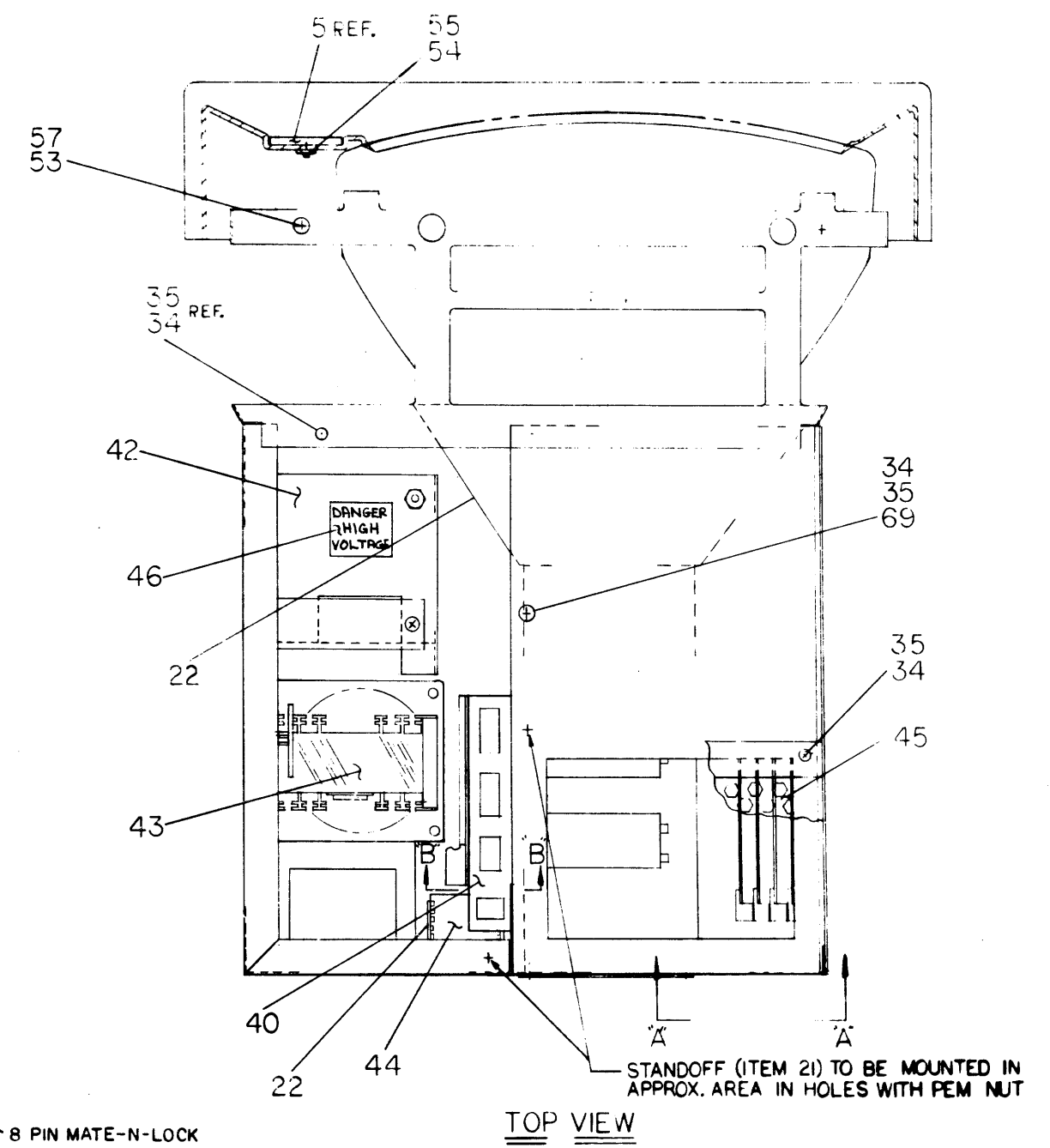
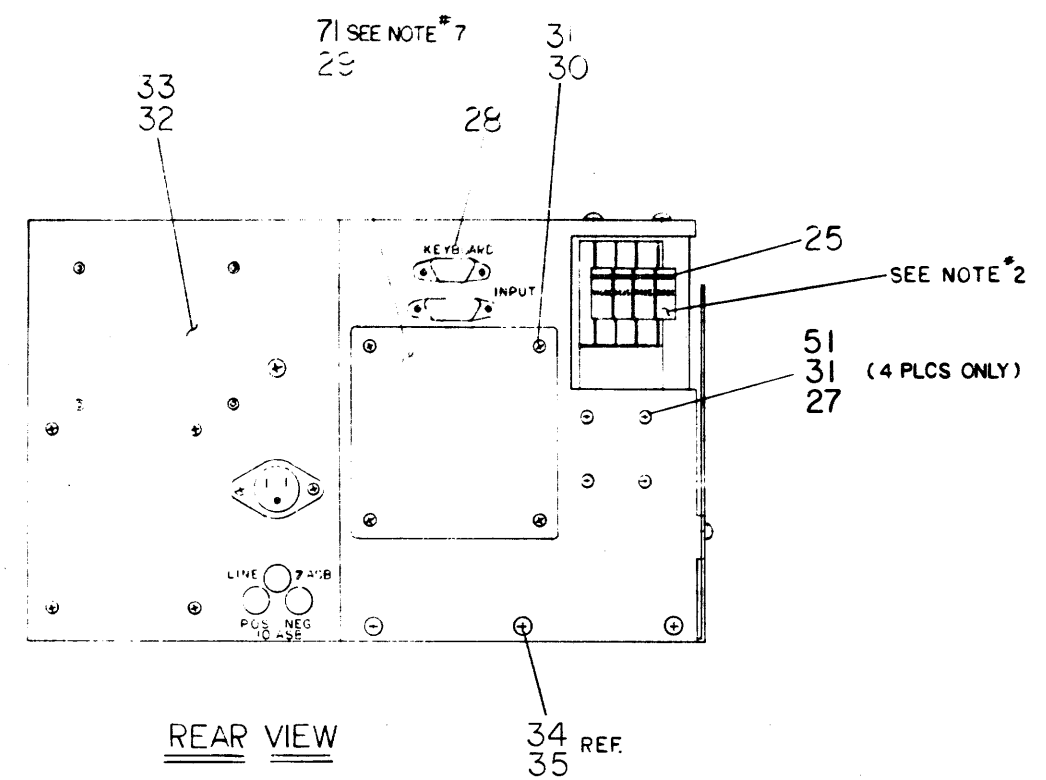
7. SHIELD (ITEM #71) TO BE INSTALLED UNDER COVER (ITEM #29)



REV	CHANGE NO	DATE	BY	CHK
A	1	1-2-74	LAVOIE	J.B.
B	2	1-2-74	LAVOIE	J.B.
C	3	2-26-74	LAVOIE	J.B.
D	4	3-26-74	LAVOIE	J.B.
E	5	5-22-74	LAVOIE	J.B.
F	6	3-28-75	LAVOIE	J.B.
G	7	9-7-75	LAVOIE	J.B.

FIRST USED ON OPTION/MODEL	QTY.	DESCRIPTION	PART NO.	ITEM NO.
VR17				
PARTS LIST				
UNLESS OTHERWISE SPECIFIED DIMENSION IN INCHES		DATE 6/1/73	digital EQUIPMENT CORPORATION	
TOLERANCES		DATE 6/1/73	TITLE	
DECIMALS	ANGLES	DATE 6/1/73	VR17 DISPLAY ASSY	
.XXX - .005	+0° 30'	DATE 6/1/73	REV. F	
.XX - .02		DATE 6/1/73	DUA VR17-0-0	
.X - .1		DATE 6/1/73	SCALE NONE	
REMOVE BURRS AND BREAK SHARP CORNERS SURFACE QUALITY V				
MATERIAL		NEXT HIGHER ASSY.		
SEE PARTS LIST		B-DD-VR17-0		
FINISH		SCALE NONE		
++		SHEET OF 3		

THIS DRAWING AND SPECIFICATIONS HEREIN ARE THE PROPERTY OF DIGITAL EQUIPMENT CORPORATION AND SHALL NOT BE REPRODUCED OR COPIED OR USED IN WHOLE OR IN PART AS THE BASIS FOR THE MANUFACTURE OR SALE OF ITEMS WITHOUT WRITTEN PERMISSION. COPYRIGHT © 1970 DIGITAL EQUIPMENT CORPORATION



REV	CHANGE NO.

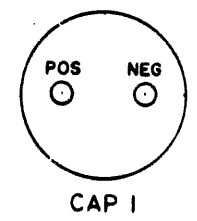
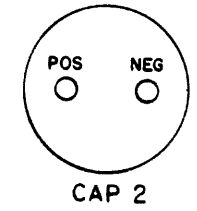
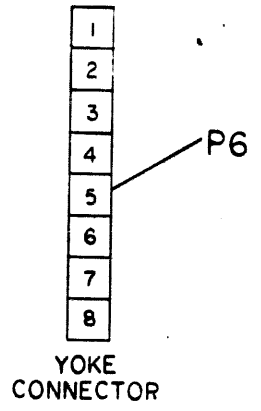
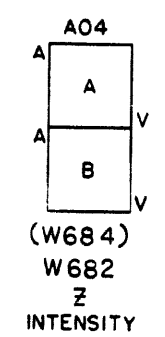
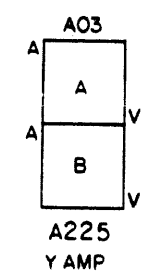
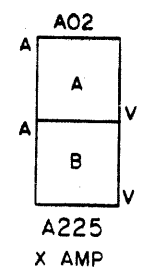
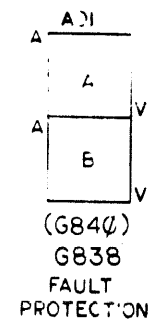
FIRST USED ON OPTION/MODEL	QTY.	DESCRIPTION	PART NO.	ITEM NO.
VR17				
PARTS LIST				
UNLESS OTHERWISE SPECIFIED DIMENSION IN INCHES		DATE	digital EQUIPMENT CORPORATION	
TOLERANCES		DATE	MAYNARD, MASSACHUSETTS	
DECIMALS	ANGLES	DATE	TITLE	
.001	1/2°	DATE	VR17	
.002		DATE	DISPLAY ASSY	
.01		DATE		
REMOVE BURRS AND BREAK SHARP CORNERS SURFACE QUALITY V				
MATERIAL		NEXT HIGHER ASSY.		
FINISH		B-DD-VR17-0	SIZE CODE	NUMBER
		SCALE NONE	DUA	VR17-0-0
		SHEET 2 OF 3	DIST.	

THIS DRAWING AND SPECIFICATIONS HEREIN ARE THE PROPERTY OF DIGITAL EQUIPMENT CORPORATION AND SHALL NOT BE REPRODUCED OR USED IN WHOLE OR IN PART AS THE BASIS FOR THE MANUFACTURE OR SALE OF ITEMS WITHOUT WRITTEN PERMISSION. COPYRIGHT © 1973 DIGITAL EQUIPMENT CORPORATION.

DUAVR17-0-0 2

NOTES:
 1. ALL PARTS SHOWN ARE VIEWED FROM WIRING SIDE. P15 PLUGS INTO J15 ON G840.
 2. CONNECT POINT 41 TO WELDED SCREW IN BETWEEN TOP MTG ASSY. AND C.R.T. SHIELD.

HARNESSTABLE				
ITEM	COLOR	HARN	MAIN CHASSIS LOC.	
D	1	WHT/BLU	2 A04D	
		BLK	3 A040	
		WHT/VIO	5 A04L	
		CLEAR	7 A04J	
		RED	8 A02E	
		BLK	9 A02B	
		YEL	10 A02H	
		RED	11 A03E	
		BLK	12 A03B	
		YEL	12 A03H	
		SHIELD	1 A04C	
		WHT/RED	1 A04H	
		GRN	4 A04K	
		BRN	14 A01H	
C		BLU	19 CAP 2 - NEG	
		PLK	17 CAP 2 - POS	
		RED	15 CAP 1 - P.S	
		BLU	18 CAP 2 - NEG	
		BLK	16 CAP 2 - POS	
	B	2	BLK	2 CAP 1 - NEG
			RED	1 CAP 1 - POS
			BLU	3 CAP 2 - NEG
			BLK	4 CAP 2 - POS
			CLEAR	42 P6-3
		SHIE. D	43 P6-6	
		CLEAR	44 P6-5	
		SHIELD	45 P6-4	
2		BLK	41 SEE NOTE 2	



REVISIONS		
CHK	CHANGE NO	REV

TITLE: VR17 DISPLAY ASSY
 SCALE: NONE
 SHEET: 3 OF 3
 NUMBER: DUAVR17-0-0
 REV: F

DUAVR17-0-0

DIGITAL EQUIPMENT CORPORATION MAYNARD, MASSACHUSETTS			QUANTITY VARIATION		
MADE BY		CHECKED	SECTION	VR17-LC	VR17-LD
DATE	DATE	DATE	ISSUED SECT.		
ENG	PROG	DATE	ISSUED SECT.		
DATE	DATE	DATE	ISSUED SECT.		
ITEM NO.	DWG NO. / PART NO.	DESCRIPTION	VR17-LC	VR17-LD	
1	D-AD-7007077-0-0	TOP MTG ASSY	1	1	
2	D-AD-7007078-0-0	WIRED ASSY	1	1	
3	D-IA-7007088-0-0	C.R.T. YOKE ASSY	1	1	
4	D-AD-7007082-0-0	DEFLECTION HEAT SINK ASSY	1	1	
5	C-IA-7411240-0-0	PANEL CONTROL	1	1	
6	C-IA-7408411-0-0	GROUND TUBE	1	1	
7	E-IA-7411320-0-0	FRAME HOLDING	1	1	
8	E-PS-1211492-0-0	MASK VR17 C.R.T.	1	1	
9	D-IA-7408400-0-0	PLATE BOTTOM MTG	1	1	
10	E-PS-1211561-0-0	C.R.T. SHIELD (17")	1	1	
11	1210331	FAN BOXER 5 BLADE	2	2	
12	1211536-07	CATHODE RAY TUBE TYPE 17	1	1	
13	1209376	KNOR ASS-701-2-BLK	1	1	
14	1009434	CAPACITOR 5500 MFD 40 VDC-10 +100%	2	2	
15	7007006-3	RESISTOR	1	1	
16	C-UA-375-8-8	LIGHT PEN ASSY	1	1	
17	E-AD-7009487-0-0	SUPER COVER ASSY	1	1	
18	9007081	CLAMP CABLE 1/4 I.D.	1	1	
19	C-IA-7411301-0-0	CLAMP TUBE	4	4	
20	9009555	WORM GEAR CLAMP	2	2	
21	B-PS-1211458-0-0	STAND OFF	2	2	
22	9007035	GROMMET CATERPILLER	A/R	A/R	

TITLE	ASSY NO	SIZE CODE	NUMBER	REV	ECO NO
DISPLAY ASSY	D-UA-VR17-8-8	A PL	VR17-8-8	F	VR17-22506
SHEET	1 OF	DIST			
	4				

DEC FORM DFC 16 (125) 1031 NR70
DRA 110

DIGITAL EQUIPMENT CORPORATION MAYNARD, MASSACHUSETTS			QUANTITY VARIATION		
MADE BY		CHECKED	SECTION	VR17-LC	VR17-LD
DATE	DATE	DATE	ISSUED SECT.		
ENG	PROG	DATE	ISSUED SECT.		
DATE	DATE	DATE	ISSUED SECT.		
ITEM NO.	DWG NO. / PART NO.	DESCRIPTION	VR17-LC	VR17-LD	
23	9107342	SPIRAL WRAP 1/20	1	1	
24	9007866	WASHER SHOULDER 3/8	2	2	
25	1209856-02	MODULE HOLDER CLIP	1	1	
26	9007264-6	YELLOW SCREW 6-32 x 1/4	4	4	
27	9008318	WASHER SHOULDER 3/8 O.D. X.140 I.D.	8	8	
28	7408407	SCOTCHCALS	A/R	A/R	
29	C-MD-7408434-0-0	COVER TUBE END	1	1	
30	9000222-1	SCR PAN HEAD PHL 6-32 x 3/8 SST	4	4	
31	9006633	WASHER LOCK INTERNAL TOOTH #6	27	27	
32	D-AD-7007084-1-0	POWER SUPPLY ASSY (115)	1	-	
33	D-AD-7007084-2-0	POWER SUPPLY ASSY (230)	-	1	
34	9006071-3	SCR PHL TRUSS HD 10-32 x 3/8 SST	50	50	
35	9006635	WASHER LOCK INT TOOTH #10	62	62	
36	9107305-02	SHRINKIES (RED)	A/R	A/R	
37	9008202	CLIP FAN	8	8	
38	9006121	SCR SELF TAPPING 8-32 x 3/8 SST	8	8	
39	9006024-1	SCR PAN HD PHL 6-32 x 1/2 SST	8	8	
40	D-CE-60388-8-1	POWER REGULATOR	1	1	
41	B-MD-7411673-0-0	P. C. GUIDE	1	1	
42	D-AD-7007079-0-0	HIGH VOLTAGE ASSY	1	1	
43	D-AD-7007080-0-0	POWER SUPPLY HEAT SINK ASSY	1	1	
44	C-IA-7408409-0-0	SHIELD SAFETY	1	1	

TITLE	ASSY NO	SIZE CODE	NUMBER	REV	ECO NO
DISPLAY ASSY	D-UA-VR17-8-8	A PL	VR17-8-8	F	
SHEET	2 OF	DIST			
	4				

DEC FORM DFC 16 (125) 1031 NR70
DRA 110

DIGITAL EQUIPMENT CORPORATION MAYNARD, MASSACHUSETTS			QUANTITY VARIATION		
MADE BY		CHECKED	SECTION	VR17-LC	VR17-LD
DATE	DATE	DATE	ISSUED SECT.		
ENG	PROG	DATE	ISSUED SECT.		
DATE	DATE	DATE	ISSUED SECT.		
ITEM NO.	DWG NO. / PART NO.	DESCRIPTION	VR17-LC	VR17-LD	
45	D-IA-7408408-0-0	SCREEN SAFETY	1	1	
46	3610267	"DANGER HIGH VOLTAGE" STICKER	1	1	
47	9107370-00	WIRE #14 AWG (BLK)	A/R	A/R	
48	9007930-0	CONN #50360-1	1	1	
49	9007925-0	CONN #300H21A-1K	1	1	
50	9006560	NUT KEPS #6-32	3	3	
51	9006021-1	SCR PHL PAN HD 6-32 x 5/16 SST	14	14	
52	9006020-1	SCR PHL PAN HD 6-32 x 1/4 SST	10	10	
53	9006070-3	SCR PHL TRUSS HD 10-32 x 5/16 SST	8	8	
54	9006563	NUT KEPS #8-32	5	5	
55	9006660	WASHER FLAT .375 O.D. X .187 X .035 THK	3	3	
56	9006073-1	SCR PHL PAN HD 10-32 x 1/2 SST	4	4	
57	9007651	WASHER EXT TOOTH #10	10	10	
58	1210428	BRKT CAP 1-7/16 IN. #115058-06	2	2	
59	9107673-25	CORD, POWER 15V 60HZ	1	-	
60	7606777-0-0	SHIPPING CRIC	1	1	
61	9007786	TINNERMAN NIT 10-32	8	8	
62	9006664	WASHER, FLT 437x 218 x 0x2	A/R	A/R	
63	9006079-3	SCR PHL TRUSS HD 10-32x1-1/4	A/R	A/R	
64	D-IA-7009646-0-0	POWER SWITCH ASSY	1	1	
65	9006071-1	SCR PHL PAN HD #8-32X3/8 SST	2	2	
66	9006634	WASHER INT. TOOTH LOCK #8	10	10	

TITLE	ASSY NO	SIZE CODE	NUMBER	REV	ECO NO
DISPLAY ASSY	D-UA-VR17-8-8	A PL	VR17-8-8	F	
SHEET	1 OF	DIST			
	4				

DEC FORM DFC 16 (125) 1031 NR70
DRA 110

DIGITAL EQUIPMENT CORPORATION MAYNARD, MASSACHUSETTS			QUANTITY VARIATION		
MADE BY		CHECKED	SECTION	VR17-LC	VR17-LD
DATE	DATE	DATE	ISSUED SECT.		
ENG	PROG	DATE	ISSUED SECT.		
DATE	DATE	DATE	ISSUED SECT.		
ITEM NO.	DWG NO. / PART NO.	DESCRIPTION	VR17-LC	VR17-LD	
67	9009576	RUBBER STRIP 1.00W X .12THK ADH.	1	1	
68	B-MD-7411892-0-0	TAB HOLDING	4	4	
69	9006565	NUT KEPS #10-32	5	5	
70	9006668	WASHER FLAT .625X.200IDX.032 THK	4	4	
71	C-PS-1211669-0-0	SHIELD, TUBE END	1	1	
72	A-PI-3700103-0-0	PACKAGING INSTRUCTIONS VR17	1	1	
73	D-IA-7009898-3-0	CORD, POWER 230V 50 HZ	-	1	
74	9006074-1	SCREW PHL PAN HEAD 10-32 X 5/8	4	4	
75	9007083	CLAMP, CABLE 3/8	1	1	

TITLE	ASSY NO	SIZE CODE	NUMBER	REV	ECO NO
DISPLAY ASSY	D-UA-VR17-0-0	A PL	VR17-0-0	F	
SHEET	4 OF	DIST			
	4				

DEC FORM DFC 16 (125) 1031 NR70
DRA 110

This drawing and specifications, herein, are the property of Digital Equipment Corporation and shall not be reproduced, copied or used in whole or in part as the basis for the manufacture or sale of items without written permission.

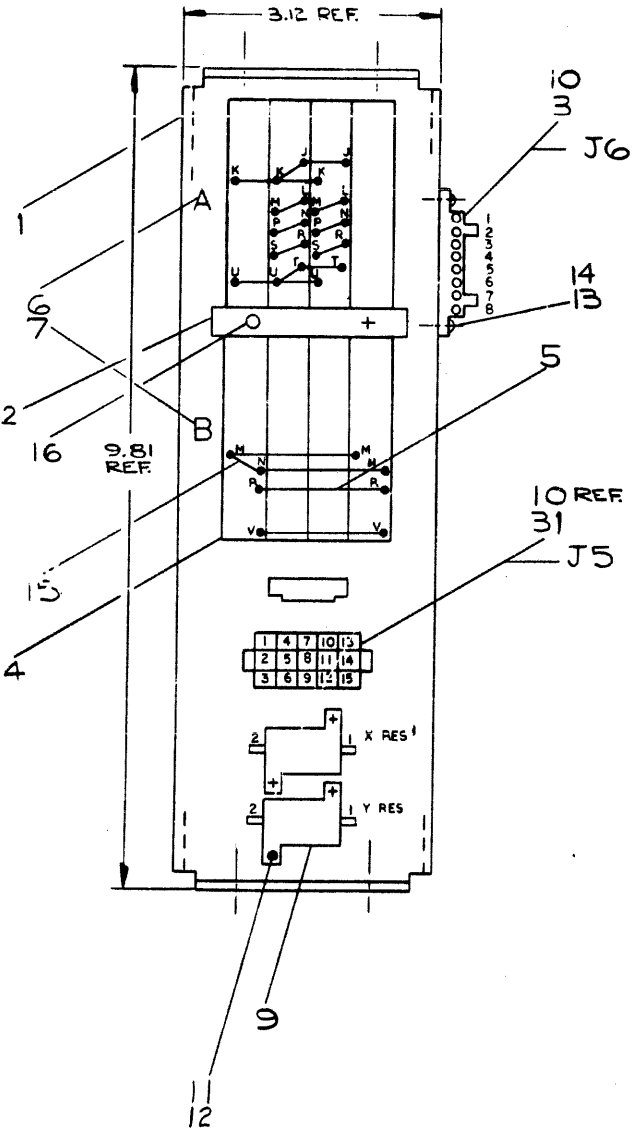
HARNESS TABLE			
ITEM	COLOR	HARN	MAIN CHASSIS LOC
37	RED	52	B03V
	BLK	51	B04M
	BLU	54	B04R
	BLK	53	B01N
	BLK	5	B04N
	BLU	6	B03R
	BLK	7	B03N
	BLU	8	B04R
	RED	9	B04V
	BLK	10	B03N
	BLK	11	B04M
	RED	12	B04V
	GRY/GRN	56	A04S
	WHT/GRN	46	A04R
	WHT/BRN	47	A04P
	WHT/YEL	48	A04M
	WHT/ORN	49	A04N
	GRY/BRN	5C	A04E
	GRY/ORN	5E	A04T

EXTERNAL COMPONENTS TABLE						
ITEM	COMP	POL	FROM	TO	POL	REMARKS
8	RES		A04U	A04T		100K*
9	XRES					SEE WIRE TABLE
9	YRES					SEE WIRE TABLE
32/30	CAP	-	A01K	A01U	+	20.MFD*
36	RES		A04F	A03V		470K *
38	CAP		A04C	A04E		180PF *

* TO BE SOLDERED

WIRE TABLE					
SIGNAL NAME	ITEM NO	DESCRIPTION	CONNECTION	FROM	TO
+20 VDC	5			A02T	A03T
+20 VDC				A01U	A03U
-20 VDC				A02J	A03J
-20 VDC				A21K	A03K
GND				B01N	B04N
GND				B01M	B04M
-20 VDC				B01R	B04R
+20 VDC	5			B01V	B04V
-20 VDC	15	18	BUS	A02J	A02K
+20 VDC				A02T	A02U
+X DRIVE				A02S	A02R
X YOKE HOT				A02N	A02P
-X DRIVE				A02L	A02M
+Y DRIVE				A03S	A03R
Y YOKE HOT				A03N	A03P
-Y DRIVE				A03L	A03M
GND	15		BUS	B01N	B01M
+20 VDC	17		RED	B02V	J5-1
+20 VDC	17		RED	B02V	J5-15
+X DRIVE	22		YEL/GRY	A02S	J5-2
+Y DRIVE	22		YEL/GRY	A03S	J5-14
-X DRIVE	23		BLU/GRY	A02M	J5-4
-Y DRIVE	23		BLU/GRY	A03M	J5-12
-20 VDC	20		BLU	B02R	J5-5
-20 VDC	20		BLU	B02R	J5-11
X YOKE HOT	19		GRY	A02P	J5-3
Y YOKE HOT	21		VIO	A03P	J5-13
X YOKE HOT	19		GRY	A02N	J6-1
Y YOKE HOT	21		VIO	A03N	J6-8
X YOKE RETURN	18		WHT	J6-2	XRES-2
Y YOKE RETURN	18		WHT	J6-7	YRES-1
GND	24		BLK	X-RES1	A02V
GND	24		BLK	Y-RES2	A03V
GND	24		BLK	A03V	B03M
+20 VDC	17		RED	B01V	A02U
-20 VDC	20	18	BLU	B01R	A02K
GRID 1	25	18	GRN	B04H	A04T
X SAMPLE	29	22	WHT	A02A	XRES-2
GND	27		BLK	A02H	XRES-1
X SIG GND	27		BLK	A02H	A02V
Y SIG GND	27		BLK	A03H	A03V
+5V	28		RED	A07P	A04A
GND	27		BLK	A04C	B03M
GND	27		BLK	YRES-2	A03H
Y SAMPLE	29	22	WHT	A03A	YRES-1
GND	24	18	BLK	A01V	B02M
GND	24	18	BLK	A02V	B02M
BOY DC	35	18	GRY/GRN	A04S	A04L
GND	27	22	BLK	A01S	A04C
Z INT	29	22	WHT	A01M	A04J
CATHODE	26/10	18	YEL	J6-5	A04U
GND	24/10	18	BLK	J6-4	B03N
GRID 1	25/10	18	GRN	J6-3	A04F
GND	24/10	18	BLK	J6-6	A03V

- NOTES:
1. TWIST (2 WIRES) = TWIST PER INCH MIN @ 4 TWIST PER INCH MAX.
 2. TERMINAL OF ITEM 32 GOES TO A01U.
 3. CUT LEADS OF ITEM 38 1/2 INCH IN LENGTH.



SEE NOTE #1

SEE NOTE #1

SEE NOTE #1

SEE NOTE #1

SEE NOTE #1

REV	CHANGE NO	REV
A	VR14-00002	A
B	VR14-00010	B
C	VR14-00014	C
D	VR14-00019	D
E	VR14-00021	E
F	VR14-00022	F
G	VR14-00023	G
H	VR14-00024	H
I	VR14-00025	I
J	VR14-00026	J
K	VR14-00029	K
L	VR14-00030	L
M	VR14-00031	M
N	VR14-00032	N
O	VR14-00033	O
P	VR14-00034	P
Q	VR14-00035	Q
R	VR14-00036	R
S	VR14-00037	S
T	VR14-00038	T
U	VR14-00039	U
V	VR14-00040	V
W	VR14-00041	W
X	VR14-00042	X
Y	VR14-00043	Y
Z	VR14-00044	Z

FIRST USED ON OPTION/MODEL VR14

UNLESS OTHERWISE SPECIFIED DIMENSIONS IN DECIMALS

TOLERANCES UNLESS OTHERWISE SPECIFIED

FINISH: FRESH

SCALE: NONE

SHEET 1 OF 1

EQUIPMENT CORPORATION

WIRED ASSY (VR14)

DAD 7007078-0-0

DAD 7007078-BOOK

DIGITAL EQUIPMENT CORPORATION MAYNARD, MASSACHUSETTS PARTS LIST					QUANTITY / VARIATION															
MADE BY J. Cahill		CHECKED D. Crabbe		SECTION 1																
DATE 10/2/70		DATE 10/2/70		ISSUED SECT. 1																
ENG <i>D.K. Crabbe</i>		PROD <i>R. Peterson</i>		ISSUED SECT. 1																
DATE 11/6/70		DATE 11/6/70																		
ITEM NO.	DWG NO. / PART NO.	DESCRIPTION																		
1	D-IA-7408422-0-0	FRAME, LOGIC				1														
2	B-MD-7407114-0-0	BAR, MTG				1														
3	1209340-00	8 CIRCUIT MATE-N-LOK SOCKET AMP				1														
4	1202244	144 CONNECTOR BLOCK				1														
5	1202188	VOLTAGE CHAIN				A/R														
6	A-SS-5308753-0-1	LOGIC FRAME DECALS				A/R														
7	A-SS-5308753-0-2	LOGIC FRAME DECALS				A/R														
8	1302466	RESISTOR 100K 1/4W 5%				1														
9	1310180	RESISTOR 0.5Ω 20W 1%				2														
10	1209379-01	CONTACT TERM PIN SOCKET AMP. INC.				18														
11	9006011-1	SCR, PHL HD PAN #4-40 x 3/8 SST				4														
12	9006557	NUT, KEPS #4-40				4														
13	9006021-1	SCR, PHL HD PAN #6-32 x 5/16 SST				2														
14	9006560	NUT, KEPS #6-32				2														
15	9107560-3	#18 AWG SOLID BUSSING				A/R														
16	9006120	POLYDRIVE SCR FIL HD 8-32 x 5/8 SST				2														
17	9107360-22	#18 AWG STRD IPVC (RED)				A/R														
18	9107360-99	#18 AWG STRD IPVC (WHITE)				A/R														
19	9107360-88	#18 AWG STRD IPVC (GRAY)				A/R														
20	9107360-66	#18 AWG STRD IPVC (BLUE)				A/R														
21	9107360-77	#18 AWG STRD IPVC (VIO)				A/R														
22	9107410-84	#18 AWG STRD IPVC TRACER (GRAY/YELLOW)				A/R														
TITLE WIRED ASSEMBLY (VR14)					ASSY NO. D-AD-7007078-0-0		SIZE CODE A PL		NUMBER 7007078-0-0			REV K		ECO NO. VR14-00029						
					SHEET 1 OF 2		DIST. G													

DEC FORM NO. 16-1031
DRA 110

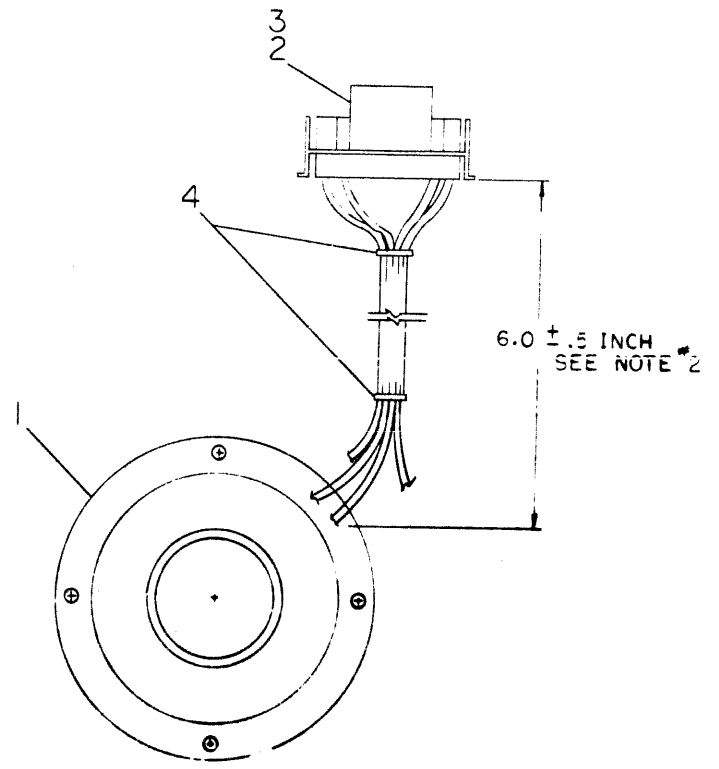
DIGITAL EQUIPMENT CORPORATION MAYNARD, MASSACHUSETTS PARTS LIST					QUANTITY / VARIATION															
MADE BY J. Cahill		CHECKED D. Crabbe		SECTION 1																
DATE 11/3/70		DATE 11/3/70		ISSUED SECT. 1																
ENG <i>D.K. Crabbe</i>		PROD <i>R. Peterson</i>		ISSUED SECT. 1																
DATE 11/6/70		DATE 11/6/70																		
ITEM NO.	DWG NO. / PART NO.	DESCRIPTION																		
23	9107410-86	#18 AWG STRD IPVC TRACER (GRY/BLU)				A/R														
24	9107360-00	#18 AWG STRD IPVC WIRE (BLACK)				A/R														
25	9107360-88	#18 AWG STRD IPVC WIRE (GREEN)				A/R														
26	9107360-44	#18 AWG STRD IPVC WIRE (YELLOW)				A/R														
27	9107350-00	#22 AWG STRD IPVC WIRE (BLACK)				A/R														
28	9107350-22	#22 AWG STRD IPVC WIRE (RED)				A/R														
29	9107350-99	#22 AWG STRD IPVC WIRE (WHITE)				A/R														
30	9107256-1	#22 TEF TUBING (BLACK)				A/R														
31	1209350-15	CONN PIN HOUSING MATE-N-LOK AMP				1														
32	1010195-0	CAPACITOR 20 mfd 100V 10%				1														
33	9007830	TERM POINT CONNECTORS				6														
34	9107420-89	#22 AWG STRD TEF TRACER (BLK/WHI)				A/R														
35	9107410-88	#18 AWG STRD IPVC TRACER (GRY/GRN)				A/R														
36	1302398	RES. 470K 1/4W 5%				1														
37	J-IA-7009357-0-0	MAIN CHASSIS HARNESS				1														
38	1000020	CAPACITOR 180 PF 100V 5%				1														
TITLE WIRED ASSEMBLY (VR14)					ASSY NO. D-AD-7007078-0-0		SIZE CODE A PL		NUMBER 7007078-0-0			REV K		ECO NO.						
					SHEET 2 OF 2		DIST.													

DEC FORM NO. 16-1031
DRA 110

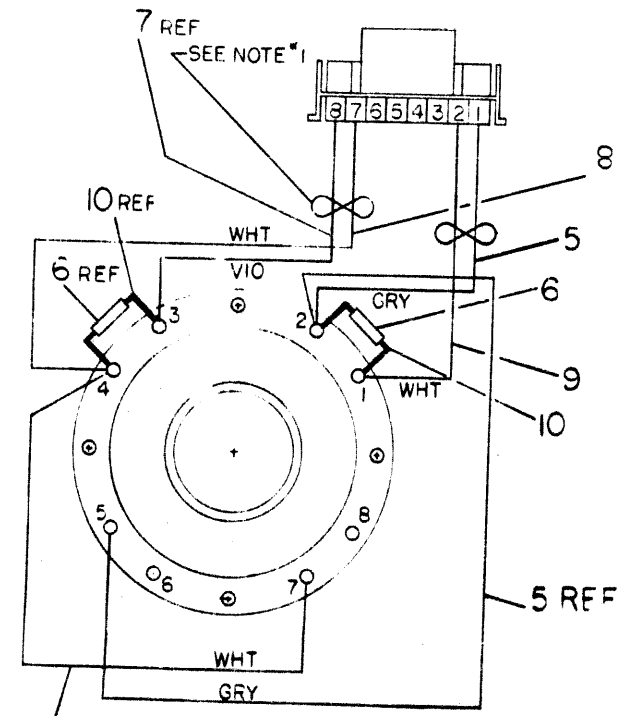
This drawing and specifications herein are the property of Digital Equipment Corporation and shall not be reproduced or used in whole or in part as the basis for the manufacture or sale of items without written permission.

C-0-8802002 V1 d 2
10023274

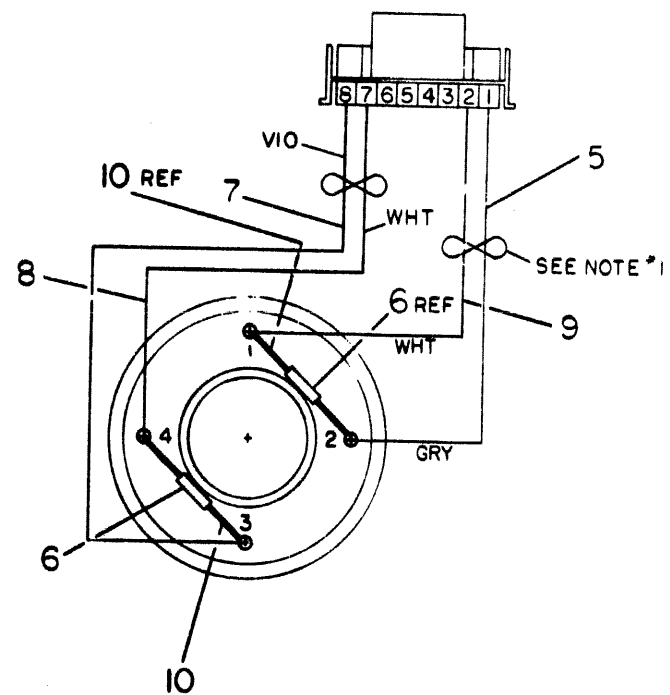
NOTE:
1. TWIST (2 WIRES) 3 TWISTS PER INCH MIN. & 4 TWISTS PER INCH MAX.
2. OVERALL LENGTH OF WITH S.O.: .5 INCH



PENN-TRAN OR SYNTRONIC YOKE



WIRING DIAGRAM FOR SYNTRONIC YOKE



WIRING DIAGRAM FOR PENN-TRAN YOKE

QTY.	DESCRIPTION	PART NO.	TEST REQ.
A/R	SLEEVING #19 GA. TEF (ON BLK)	9107276-00	10
A/R	WIRE #18 AWG STD TWP (GRY-WHT)	9107430-89	4
A/R	WIRE #18 AWG STD TWP (VIO-WHT)	9107430-79	8
A/R	WIRE #18 AWG STD TEF (VIO)	9107360-77	7
2	RESISTOR 150Ω, 2.0W, 10%	1300258	6
A/R	WIRE #18 AWG STD TEF (GRY)	9107360-88	5
2	TIE WRAP #SST-1-B PANDUIT	90C7032	4
4	CONTACT, TERM. PIN AMPHENOL	1209378-01	3
1	CIRCUIT, MATE-N-LOK	209340-C1	2
1	YOKE, PENN-TRAN CORP OR YOKE, SYNTRONIC INSTRUMENT	1209631	1

REV	DATE	BY	CHK	DESCRIPTION
1	11-2-71	A. FISHMAN		REVISED 5 KEEL BAWH
2	11-2-71	A. FISHMAN		REVISED 5 KEEL BAWH
3	11-2-71	A. FISHMAN		REVISED 5 KEEL BAWH
4	11-2-71	A. FISHMAN		REVISED 5 KEEL BAWH
5	11-2-71	A. FISHMAN		REVISED 5 KEEL BAWH
6	11-2-71	A. FISHMAN		REVISED 5 KEEL BAWH
7	11-2-71	A. FISHMAN		REVISED 5 KEEL BAWH
8	11-2-71	A. FISHMAN		REVISED 5 KEEL BAWH
9	11-2-71	A. FISHMAN		REVISED 5 KEEL BAWH
10	11-2-71	A. FISHMAN		REVISED 5 KEEL BAWH

VARI USED OR OPTION/MODEL
VRI4

UNLESS OTHERWISE SPECIFIED
DIMENSIONS IN INCHES
TOLERANCES
FRACTIONS DECIMALS ANGLES
HOLE POSITION .010
HOLE SIZE .015
FINISH SURFACE QUALITY
REMOVE BURRS AND BREAK SHARP EDGES

DATE 5-3-71
BY [Signature]
DATE 5-4-71
BY [Signature]
DATE 5-5-71
BY [Signature]
DATE 5-5-71
BY [Signature]

NEXT HIGHER ASSY
DIA-VRI4-0-0

SCALE
SHEET 1 OF 1

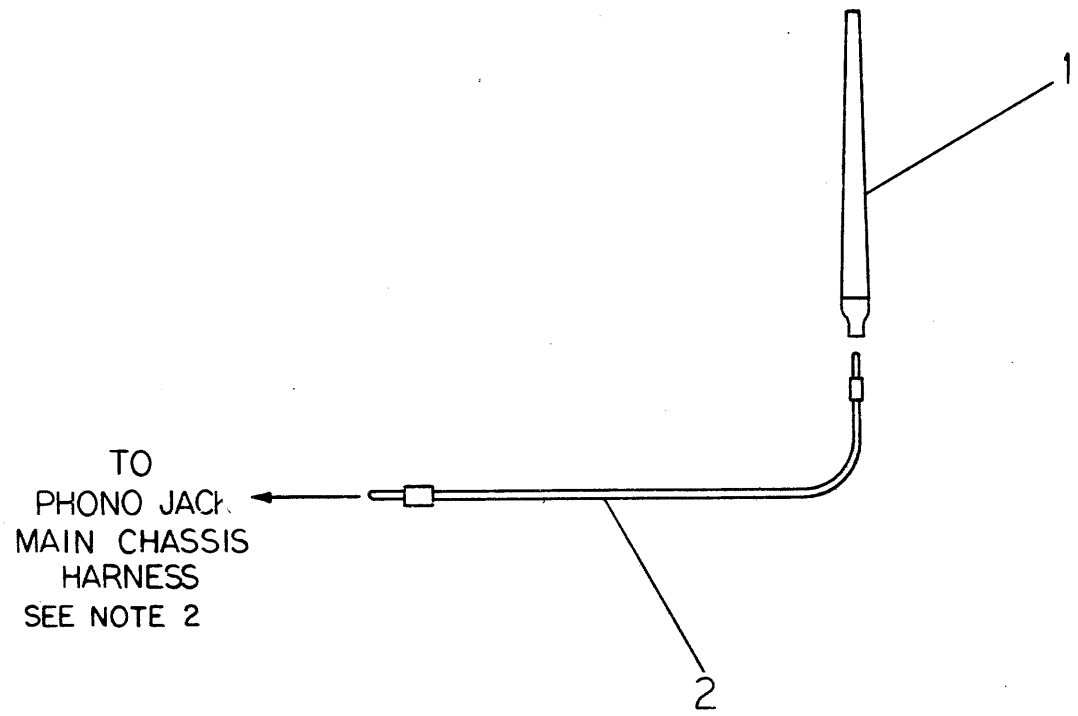
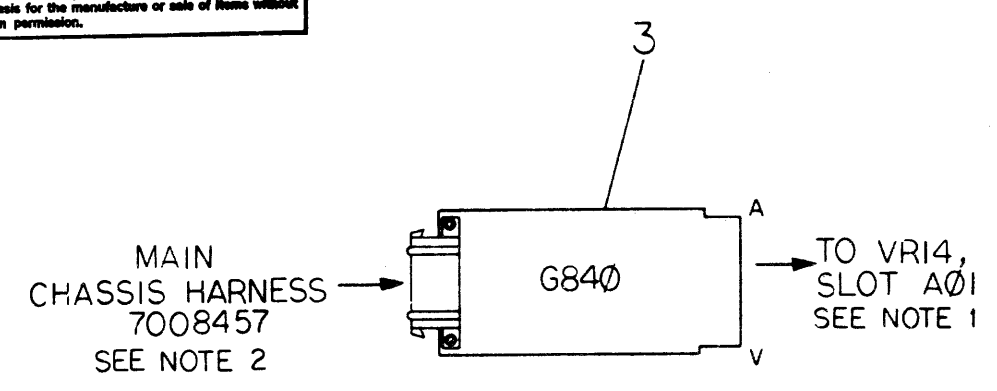
PARTS LIST
EQUIPMENT CORPORATION
C.R.T. YOKE ASSY
DIA 7007088-C-0

DIA 7007088-0-0

This drawing and specifications, herein, are the property of Digital Equipment Corporation and shall not be reproduced or copied or used in whole or in part as the basis for the manufacture or sale of items without written permission.

NOTES:

- ITEM #3 (L.P. AMPLIFIER) REPLACES THE G838 PHOSPHOR PROTECT MODULE IN SLOT A01 IN THE VRI4.
- MAIN CHASSIS HARNESS SUPPLIED WITH EXISTING HARDWARE.



QTY.	DESCRIPTION	PART NO.	ITEM NO.
1	GT40 LIGHT PEN AMP.	G840	3
1	CABLE, SWITCHCRAFT	120960B	2
1	LIGHT PEN ASSY (375-A)	C-UA-375-A-0	1

FIRST USED ON OPTION/MODEL		QTY.		DESCRIPTION		PART NO.		ITEM NO.	
VRI4									
UNLESS OTHERWISE SPECIFIED DIMENSION IN INCHES. TOLERANCES				PARTS LIST					
DECIMALS		ANGLES		DRN		DATE		digital EQUIPMENT CORPORATION MAYNARD MASSACHUSETTS	
.XXX - .005		±0° 30'		CBM/Cy		10-12-72		TITLE LIGHT PEN ASS'Y (375)	
.XX - .02				CHK'D		DATE			
.X - .1				D. J. Collier		10-13-72			
REMOVE BURRS AND BREAK SHARP CORNERS SURFACE QUALITY ✓				ENG.		DATE			
MATERIAL		NEXT HIGHER ASSY.		R. J. Collier		10-13-72			
FINISH				PROJ. ENG.		DATE		SIZE CODE	
				R. J. Collier		10-13-72		NUMBER	
				BROD.		DATE		REV.	
				S. J. Mearns		10/17/72		C UA 375-0-0	
				MATERIAL		B-DD-375-0			
				FINISH		SCALE NONE			
				SHEET		OF		DIST.	
				1		6			

REV.	CHANGE NO.

REV. NUMBER C UA 375-0-0

