

digital

MAYNARD

DIGITAL THIS WEEK



Volume 8 Number 14

July 20, 1981

Strong interest in Digital products at D.C. convention

The sale of two computer systems and VIP tours for Naval and State Department officials highlighted Digital's Government System Group's (GSG) participation in the 35th annual Armed Forces Communications and Electronics Association Convention and Exposition last month in Washington, D.C.

Featured at the three-day show was the newest member of Digital's VAX family, VAX-11/750. Ken Jones, Word Processing Sales Unit manager in Washington, said a demonstration of the capabilities of the VAX-11/750 so impressed Westinghouse representatives, they ordered two systems right on

the convention floor. Ken said the sale represented more than \$250,000 in business.

GSG Marketing Manager John Buckley said many senior government officials and marketing analysts spent time visiting Digital's displays. "It was very satisfying for me to discover that most customers had a high recognition of Digital systems and were familiar with specific programs. In past years, customers who have selected Digital computers asked a lot of general questions, but this year they came to us with specific requests. I found a much higher customer awareness of Digital products," said John Buckley.

Mail Systems prepares for postal strike

Digital's Mail Systems has developed a contingency plan to maintain interoffice and critical external mail service in the unlikely event that a U.S. postal strike becomes a reality.

If there is a work stoppage or slow down when the postal workers' contract expires on July 20, New England interoffice mail will not be affected. All other domestic interoffice mail will be consolidated at Parker Street and transported by courier service. The frequency of deliveries will vary from daily to weekly, according to volume.

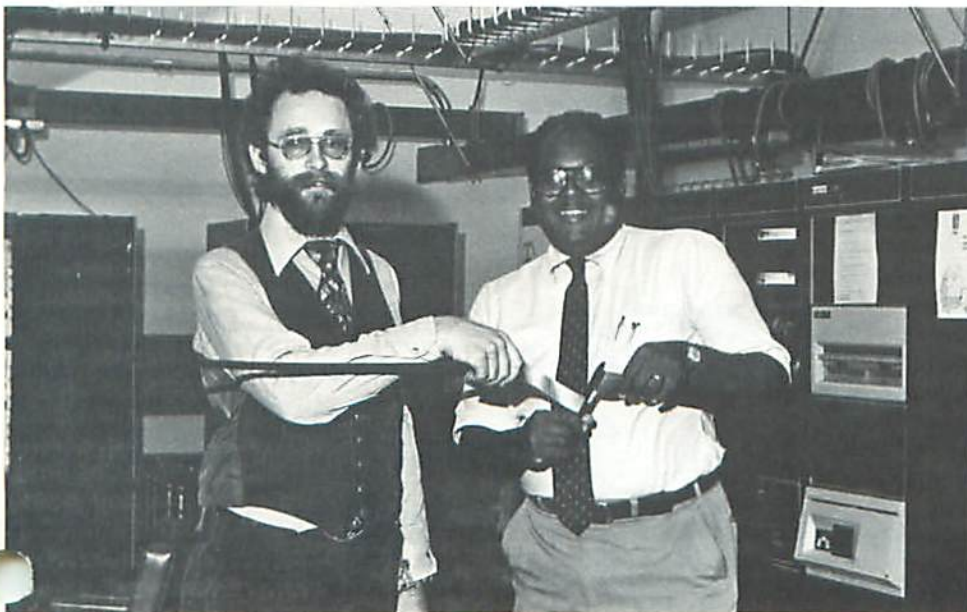
Critical domestic external mail will be forwarded with interoffice mail. People who expect to receive critical mail from outside Digital should ask their correspondents to delivery mail to the nearest Digital location. Critical mail can also be picked up at field offices. This arrangement is for highly critical mail only.

International interoffice mail will be routed through Kanata, Canada, unless the Canadian postal strike is still in progress. In this case, an international courier service will be implemented.

There may be some inconvenience and delays. Mail Systems will need everyone's cooperation and good judgement to make certain the contingency plan works. Employees are asked to forward only important mail to domestic facilities outside of New England and only critical mail to international facilities.

If there are any questions about these procedures, please call your local mailroom. DTN extensions are listed under Mail Systems in the Digital Telephone Directory.

Terminal Engineering dedicates lab



Bob Spence, facility manager, and Bill Picott, group manager of Terminal Engineering, hosted the opening of the new Terminal Engineering lab in ML1-1. The lab supports 180 users in Engineering in development, administration, communication.



Karen Kupferburg, Corporate Personnel controller

Corporate Personnel has new controller

Karen Kupferburg has been appointed Corporate Personnel controller reporting to Ilan Meshoulam, manager of Systems Administration and Business Management. In this position, Karen will be responsible for measurement and control activities associated with the Corporate Personnel function.

Before joining Personnel, Karen was manager of Financial Planning and Analysis for the Medical Systems Group (MSG) for the past two years. Prior to Digital, she worked as a business analyst in the manufacturing division of Xerox and as a securities analyst at E. F. Hutton.



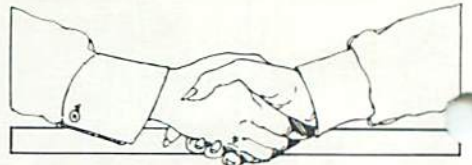
Mike Gutman, PDP-11 Program Office manager

Gutman appointed PDP-11 Program Office manager

Mike Gutman has been appointed manager of the PDP-11 Program Office reporting directly to Gordon Bell and Larry Portner, vice presidents, Central Engineering.

The Program Office covers the development of all PDP-11 based products from microprocessors to large systems for technical, real time and commercial systems.

Mike came to Digital seven years ago to help found the Components Group. For three years, he was product manager and then engineering manager of the Memory Systems Group. Before his new appointment Mike was Storage Group product manager for three years.



EMPLOYEE KUDOS

Community honors

Dorothy Day, a writer with the DECnet group, has been elected president of the Board of Directors of Together, Inc. Together is a private family counseling, drug rehabilitation corporation serving the communities and schools of Hudson and Marlboro.

Professional honors

Annette Bakstran, senior financial analyst with Corporate Accounting/External Reporting, was recently awarded a silver medal by the Massachusetts Society of Certified Public Accountants for the second highest score on the May 1980 C.P.A. exam. Annette also received the Elijah Watt Sells certificate of distinction for her grade on a national basis by the America Institute of C.P.A.s.

Alice Bucca, manager of Corporate Employee Activities, has been appointed treasurer of the National Industrial Recreation Association. As a member of the Board of Directors, Alice will participate in developing policy, direction, plans and evaluation for the association.

Ed Kolinka, technical writer for A&T, **Ray Pelchat**, vendor test consultant A&T, **Dale Whisman**, quality assurance manager A&T, and **Bob Willitts**, quality control manager A&T, were invited to give presentations to the American Society of Quality Control in May. These "Quality" people of the Aquisition and Test (A&T) Group in LSI (Large Scale Integration) exchanged views and experiences with other quality control people from around the world.

Roger Morrison, principal engineer, A&SG, was the recipient of a "Presidential Citation" from the International Material Management Society. Roger was recognized at the annual awards banquet for his outstanding work in standards.

DIGITAL THIS WEEK



Editor: Christine Medeiros

Correspondents

BU - Lil Holloway	249-2396
NA - Theresa Cash	233-2149
TW - Gloria Flaherty	247-2552

Send stories, photos and ideas to DTW, PK3-1/K23 or call DTN 223-5042. Direct Marketplace ads to Alice Christian, PK3-1/K23, DTN 223-2261.

DTW is published every other week for employees of Digital Equipment Corporation in the Maynard, Mass. area.





NEWS BRIEFS

Deadlines for DTW

The next four issues of "Digital This Week" and deadlines for submitting copy are:

Aug. 3 issue-July 22 deadline

Aug. 24 issue-Aug. 13 deadline

Sept. 7 issue-Aug. 27 deadline

Sept. 21 issue-Sept. 10 deadline

Please note that there will be three weeks between the August 3 and August 24 issues.

On the move

Process Engineering has moved to a new facility at 32 Wiggins Ave., Bedford, Mass 01730 as of July 20. The telephone number is 617-276-7111.

The Digital Telephone Network (DTN) code will be 280-XXXX, effective in late August. Until then, calls can be made to Direct Inward Dialing extensions by dialing 617-276 plus the extension. The mail code is QI.

Digital breaks ground for MKII

Ground breaking ceremonies in New Hampshire on June 24 officially marked the start of construction for Digital's second Merrimack facility.

Hosted by Julius Marcus, vice president, Commercial Group, and Stan Olsen, vice president, Computer Products Group, the ground breaking for the 330,000 square foot building was attended by town officials.

Construction is scheduled to be completed by mid-1982.

Aircraft schedule extended again

The current Digital aircraft schedule has again been extended. All flight information, with one exception, is effective through September 30, 1981.

The Monday, Wednesday and Friday 11 a.m. flight to Ottawa, Canada, has been cancelled. The return flight at 12:45 p.m. has also been discontinued.

In case of postal strike

Should there be a U.S. postal strike on July 20, Investor Services wishes to continue to deliver the same quality service to employees who want to sell stock held under the Statement of Ownership of the Employee Stock Purchase Plan. For this reason, Investor Services suggests:

Employees who wish to sell stock should send a RCS or EMS message using the "TWX Instructions" available from your PSA. Include your site code, mail stop and telephone number. Investor Services will forward the proceeds from the sale through inter-office mail. This will only be used in the event of a postal strike.

CHEF—DCU cooks up new add-on certificate

CHEF, Children's Higher Education Fund, is an add-on certificate paying 12 percent for two to six years. The program has been set up by Digital Employee's Federal Credit Union to help parents combat skyrocketing cost of higher education. By 1988, it is estimated that a four-year private college will cost \$50,000 for tuition alone.

A minimum of \$100 is required and deposits may be made by payroll deduction, mail or over the counter. All new deposits will earn the same 12 percent rate (12.75% annual effective rate).

If parents set up the account under the child's social security number or the Uniform Gift of Minor's Act, the dividends will be taxed at the child's income level, not the parents'.

To find out more about the CHEF program, contact any DCU branch.

Canadian postal workers strike

Canada's postal workers are currently on strike. Interoffice mail to Canada has not been affected by the strike. Special arrangements can be made for critical external mail to Canada. Please contact your local mailroom for more information.

Boylston Conference Center to expand

The Headmaster's House Conference Center will be closed the last three weeks in August for renovations to double its capacity. Reservations will still be taken at Digital's meeting center in Boylston, Mass., during construction. The center will reopen on September 1.

Elaine Bowen, Conference Center administrator, would like to remind employees that Boylston is on the Digital Telephone Network. The reservation number is DTN 8-245-5206 or 5305. From outside Digital, please dial, 617-869-5206/5305.

Company vehicles for rent

Your car just can't make that business trip to New Hampshire again? Or your group is making a presentation and you have equipment to move? Or maybe you are expecting a dozen customers that need transportation to and from the hotel? Or are you in Massachusetts on a temporary assignment?

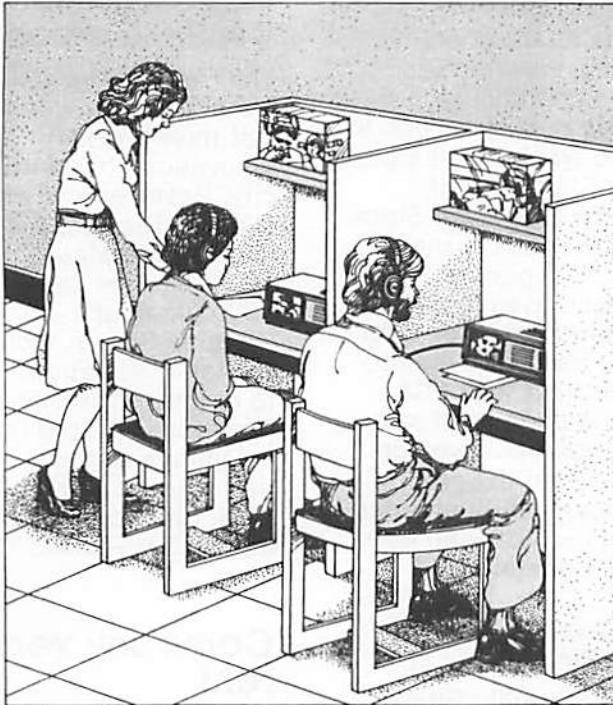
Why go outside of Digital for a car rental? Why pay more? On-site company vehicles can meet your needs within a week's notice. Digital's internal rental fleet has 44 Ford Fairmonts and Pintos (sedans and wagons) at \$13 a day, no mileage charges. The two passenger vans are \$40 a day. And the versatile cargo van is only \$20 a day.

Reservations are on a first-come, first-served basis. Vehicles are available to any employee with access to Parker Street, the pick-up point, and have the signed permission of their cost center manager in a memo or by signing the rental form.

Employees can use Digital resources to get the job done. Fees can only be charged to the cost center. There is a one-year time limit on a rental.

To reserve a vehicle or for more information, please call DTN 8-223-5996.

Individualized Learning Center opens in Maynard



Office Education has announced the opening of its new Individualized Learning Center (ILC). The ILC is a self-contained training center featuring self-paced audio visual courses. The center, housed in the Parker Street facility, currently specializes in specific hardware, software and generic courses.

All courses offered are Self-Paced Instruction (SPI) administered by an Educational Services educational specialist. LaBelle units are available on the premises for students' self-paced use. A forty hour course may be scheduled for one week or for forty days (an hour a day).

Currently offered courses:

Title	Length	Prerequisites
Disk Principles	3 days	None
Effective Writing for Executives	1 day	None
Introduction to Data Communications	3 days	Intro to PDP-11 audio visual course
Introduction to Digital Logic	7 days	Intro to minicomputers
Introduction to Mini-computers	3 days	None
Intro to PDP-11	5 days	Intro to Digital Logic & Minicomputers
Reading Efficiency	2 days more	Ability to read
Small Systems Concepts	2 days	None
Tape Concepts	3 days	None
VAX-11 Concepts	3 days	Intro to minicomputers audio visual course
VAX-11 Instruction Set	7 days	Intro to Vax-11 audio visual course

To register, please send a memo with the course title, your name, badge number, location/mailstop, DTN and your manager's printed name and signature. Times will be scheduled upon registration through the ILC registrar. For more information about offerings, times and center, please call the ILC registrar at DTN 8-223-5828.

WPI comes to Digital

Representatives from Worcester Polytechnic Institute will be available on Monday, July 27 from 2-4 p.m. in the Parker Street cafeteria to discuss educational opportunities.

Prof. Gilbert Owyang, coordinator of Graduate Studies in Electrical Engineering, Prof. Robert Kinicki, Computer Sciences, and Prof. Robert Hall, director of Continuing Education, will meet with present and prospective students in WPI programs leading to a degree in Computer Science or Electrical Engineering with Computer Engineering concentration. They will also have information available about other WPI programs.

The following courses will be offered during the Fall 1981 semester at the Acton/Boxboro High School:

CS 503	Systems Simulation & Optimization
CS 516/	
EE 570	Sequential Machines
EE 4802	Digital Computer Organization
EE 571	Computer Architecture

Fall semester registration details will be announced in a later issue of "Digital This Week." Admission information, application forms and program details will be available at the July 27 meeting. Academic advising is offered throughout the academic year.

Employees unable to attend the session may contact Prof. Hall at WPI for general information, Prof. Owyang, Digital coordinator for Electrical Engineering, or Prof. Kinicki, Computer Science, at 617-753-1411.

Vietnam Veterans at Digital meet

Vietnam-era veterans at Digital will hold their next meeting on July 30 at 5 p.m. in the Engineering Information Conference Room, ML4-2. Interested employees should call Paul Senecal, DTN 223-4638, or Frank Alla, DTN 223-9878, for more information.



TICKET SALES

Pleasant Valley Jimmy Fund Golf Classic

Armsby Rd., Sutton, Mass.

Sept. 8-13

Tickets for grounds coupon: \$5

ORDERS MUST BE RECEIVED BY AUG. 27.

Tanglewood on Parade

Fri., Aug. 21

Busses depart from Parker Street

parking lot at 4 p.m. There will be a stop enroute for dinner at a moderately priced restaurant. There is a tentatively planned buffet costing \$7-8 per person. Please indicate on order form if you wish to have the buffet.

Approximate time of arrival at Tanglewood is 8:30 p.m. Concert begins at 9 p.m. Busses depart approximately at 12 p.m. and arrive at Parker Street around 3 a.m. Tickets are \$17 per person. (This does not include buffet which must be paid for at the restaurant.)



BIRTHS

A son, Kurt Michael, born May 18 to Howard and Mary Ann Anderson. Howard is an electrical engineer in Real Estate and Construction (RECO) in West Concord.

A son, Thomas Edward, born June 2, to Tom and Pat Cusumano. Tom is a marketing forecaster for the Technical OEM group in Maynard.

A son, Shaun Michael, born June 13 to Linda and Jerry Feldeisen. Linda works for Large Systems Engineering in Marlboro. Jerry was the GIA Area sales training manager until March of this year.

A daughter, Lesley Lynne, born July 11 to Arthur and Elaine Molineaux. Arthur is a communications consultant in Corporate Telecommunications services department.

A son, David Reeves, born June 22 to Kenneth and Karen Omahen. Ken is a senior engineer for the Systems Performance Analysis group in the Mill.

Adoption

A daughter, Elena Marie, born May 12 and adopted July 1 by Nick and Jan Cappello. Nick is the CAD operations manager for Large Systems Engineering in Marlboro.

To Northboro

from Belmont, Arlington, Lexington, Maynard, John Papazian, 223-5138.

To Wilmington

from Derry, Salem N.H. to FSM East in July, Joe Santos, 236-2189.

Carpools

To Marlboro from Andover, Tim Woodard, 231-5395.

To Maynard from Braintree, Joan McAuliffe, 223-8857.

To Marlboro from Shirley, Margaret Froias, 231-6784.

CLIP AND SEND

Use a separate form for each event. (Make photocopies, if necessary).

Event _____ Date of Event _____

I understand that if the allotment of tickets has been sold out, my money will be refunded. I have enclosed a stamped, self-addressed envelope with my home address.

Number of Tickets _____ Check enclosed for \$ _____

Name _____

Mailstop _____ Badge No. _____ DTN _____

Home Address _____

State and ZIP Code _____

Make check payable to DEC Recreation Association and forward with this coupon to: DEC Recreation Association, PO Box 310, Maynard, MA 01754.



VANPOOLS

To Maynard

from Chelmsford via Rt. 27, DCV 8, Charles Wellington, 223-3570.

from Westboro, DCV 87, Vic Hamburger, 223-8441.

from Fitchburg, Leominster, DCV 39, Diane Sarkin, 251-1526.

from Manchester, Bedford, Merrimack, N.H., DCV 69, Ollie Baker, 223-2747.

from Berlin, Clinton, Lancaster a Rt. 117, DCV 66, Al Kimmel, 223-4864.

To Marlboro

from Gardner, Leominster, Fitchburg, DCV 89, Brian Lupaczyk, 231-5564.

COMMUTER CORNER

Find out how to cut down on commuter costs by contacting the Commuter Transportation Department, DTN 251-1525.

Call the following DTN numbers to join these routes.

from Belmont, Cambridge, Watertown, Brighton, Newton, DCV 77, Jake Celosse, 231-4355.

To Woburn

from Derry, Salem, N.H., Methuen, DCV 45, Joe Santos, 236-2189.

FORMING VANPOOLS

To Maynard

from Athol, Gardner via Rt. 2 and Concord, Donald Reinke, 223-3290.

To Hudson

from Lancaster, Diane Nickson, 617-568-1431 x2025.

THE MARKETPLACE



REAL ESTATE

JACKMAN, ME, 3 bdrm log cabin, year round, \$40,000. Bob, PK223-5282.

AYER, tri-split level, 4-5 bdrms, eat-in kitch, lg fam rm, 1A, mint cond, \$79,900. Cindy, FF258-4091.

FARM HOUSE, country home on 1.67A, attach 2-car gar, paved drive, \$62,900. Leona, TW 247-2370.

CONTEMP HOME, 3 bdrm, 2 bths, LR, DR, kitch, all appliances, furnished, frpl. Jean, MD 255-2336.

METHUEN, MA, 4 bdrm cape, 2 bths, 1A, close to Andover/Salem plants, \$74,500. Deane, WA 221-5303.

MADISON, NH, land 3/4A, top of hill, spectacular view, elec, water, road, \$12,500. Lee, WJ 257-1208.

BOYLSTON, exclusive area, new tri-level, 4 bdrms, 3 bths, much more, \$99,500. Pastor, HL225-4492.

MOBILE HOME 12X65', with 12X32' addition, 3 bdrm, kitch, liv rm, din rm, \$19,000. Stephen, FP283-7444.

RENTALS

APT, Fitchburg area, 3 rms furnished, \$60/wk incl util. Ronald, ML 223-6831.

CONDO, Martha's Vineyard, avail wks 8/29, 9/12, 9/19, slps 2, kitch priv, TV. Jerry, BU249-4778.

APT, Derry, NH, 1/2 duplex, 4 rm, 1 1/2 bth, w/w carp, beach rts, wood lot. Art, MR 231-6351.

TOWNHOUSE, Quechee, VT, slps 4, 2 golf courses, tennis, swim, \$275/wk. Nancy, MR 231-4709.

LAKEFRONT HOUSE, Cape Cod, priv beach, 4 bdrm, 2 bth, avail Aug, \$550/wk. Henry, PK 223-2638.

LARGE FURNISHED ROOM, in country home, Billerica, access to LR, kitch, lndry, \$30/wk. Ann, BU249-4807.

WATERFRONT TRI-LEVEL HOUSE, E. Falmouth, 4 bdrm, avail Aug, \$2000. Jan, NA 233-2179.

HOUSE, charming colonial, 3 bdrm, 2bth, 2-car gar, frpl, lg yard, 8/1 occ, \$625+util. Jim, MR231-4740.

HOUSE, Acton Center, raised ranch, 3-4 bdrm, no pets, extras, \$600/mo+util. Chih, TW 247-2603.

HOUSE, Newton, 2-3 bdrm, avail 9/1, yard, 1 car gar, fin bsmt, frpl, \$225/person+util. Henry, HL225-4129.

HOUSE, Marlboro, furnished 3 rms, \$85/wk incl all util. Verna, NR 234-4405.

HOUSE, Shrewsbury, 5 lg rms, gar, priv yard, frpl, walk to center, \$475+util. Louis, LJ 282-2077.

WANTED

APT, 2-3 bdrms, Lancaster/Hudson area for Sept. 1. Barbara, EH 272-3679.

HOUSEMATE (F) non-smoker, share 2bdrm contemp home, Harvard, \$300/mo incl util. Marie, PK223-8981.

CHINA, Noritaki, Ridgewood pattern, reasonable offer. Eleanor, MR 231-6444.

SCHEMATIC (copy) for McIntosh 50W amplifier #50-W-2. Lou, PK 223-4864.

LADDER, any size, gd cond, reasonable price. Thomas, PK 223-6007.

HOUSEMATE, Maynard, wooded area, \$250/mo+util. Eric, MR231-5221.

USED TRUMPET in reasonable cond for aspiring young musician. Julie, ML 223-8523.

APT, 2 bdrm in duplex/private home, 25 min to Maynard, \$400/mo incl util. Bob, MS 223-2207.

NEW/USED BRICKS, will pick up. SAFETY BELTS for '76 Rabbit, back seats. Ralph, WJ 257-1159.

ROOMMATE, room in Westford, non-smoker only, rent negotiable: Maureen, LK 226-7159.

SCHNAUZER or TERRIER, 1 yr old, housebroken. Bob, PK 223-3910.

BOOK-BINDER'S PLOUGH (for trimming books); BRASS TYPE (for hot stamping); TOOLS. Dick, MR 231-5483.

ROLLTOP DESK. Carole, AK 246-2266.

ROOMMATE, share 3 bdrm/2bth house, Townsend, \$200 + 1/2 util. Dan, ML 223-2494.

VFO-5208/AT-200, in gd working cond. George, PK 223-7422.

RIDING TRACTOR MOWER, 5-7HP, any gd make. Pat, PK 223-7413.

CHILD'S WOODEN SWING SET. Stan, PK 223-6547.

ROOMMATE/ROOMMATES share 3bdrm ultra-lux apt, Somerville, \$300 incl util. Deborah, WJ257-1226.

ROOMMATE (M/F) share 3bdrm duplex w/2 F's, Arlington Hts, \$160+util. Linda, BU 249-4176.

CANVAS TARP to cover firewood, will pay reasonable price. Dick, ML 223-8200.

ROOMMATE (M/F) share 1g 2 bdrm apt, Marlboro, pool, tennis, \$213/mo+util. Lejuan, ML 223-3912.

ROOMMATE (F) share 2bdrm apt, Marlboro, \$200/mo w/heat, elec. Alyson, WZ 238-3467.

TIRES, 2 or 4 radials 165-R75-13, low mi. Jim, HU 225-4260.

ROOMMATE (M/F) non-smoker, share 6rm ranch, North Framingham, \$220+1/2 util. Lorine, MR231-4547 (nights)

MOTORCYCLES

1973 BMW R60/5, 7K mi, rain fender, very gd cond, \$2000. Terry, MR 231-6479.

1978 HONDA 750 Four Super-Sport, 6400 mi, exc cond (like new), \$2100 or B/O. Warren, MR231-5081.

1979 YAMAHA DT100, dirt/street bike, exc cond, great for beginner, \$500. T. Mahoney, MR 231-6270.

1980 YAMAHA YZ 250G, ridden 5 mos, exc dirt bike, well maintained, extras, \$1150. Billy, ML223-3022.

1980 YAMAHA SPECIAL, 1400 mi, burgundy, like new, garaged, \$2600 firm. Vince, WA 221-5444.

1981 SUZUKI GS450TX, black, highway bars, eng grd, rack, bk rest, 4K mi, \$1600 firm. Ricky, HL225-4121.

1978 YAMAHA DOHC 750 Shaft Drive, maroon w/blk access, 10K mi, gd cond, \$2200. John, PK223-5158.

1978 YAMAHA XS400, black, 10K mi, 55mpg, mag whls, exc cond, \$1000. Kathy, ML 223-5062.

1978 SUZUKI, GS-1000, full dress, am/fm, luggage, exc touring, 40-45mpg, \$2895. Dave, NR234-4269.

1978 HONDA 550K, 3800 mi, exc cond, \$1500. Ann, PK 223-5102.

1977 YAMAHA YZ80, dirt bike, exc cond, \$350. Bruce, MR 231-4046.

KZ1000, custom w/extras, performance cond, low mi, \$2800 or B/O. Mark, PK 223-1235.

1968 B.S.A. VICTOR 441CC, gd running cond, new clutch/cables, incl manual, \$425. Tom, AK 246-2417.

1979 KAWASAKI, 1000ST, exc cond, low mi, extras, \$3350. Nancy, PK 223-6195.

1976 HONDA CB360T, 13K mi, new tires, great bike, \$675. Kevin, MO 231-5734.

1976 HONDA 550-4, very clean, extras, adult owned and ridden, \$1250. Ray, NR 234-4520.

APPLIANCES

REFRIGERATORS (2), 2dr Hotpoint \$150; older Kelvinator \$50. Nancy, PK 223-6848.

STOVE (gas) 4 top burners, oven below, very gd cond, \$75. Sandy, HL 225-4901.

REFRIGERATOR '55 Philco \$40. B+W PORTABLE TV \$15. MARTIN GAS HEATER \$75. Donna, LW247-2911.

AIR CONDITIONER, Amana 6K BTU, used 2 summers only, \$125. Bill, CF 251-1554.

BICYCLES

COLUMBIA, boy's 20" BMX dirt bike, 6 mos old, \$75 or B/O. Richard, MR 231-4156.

MEN'S 26" 10 SPD, nds work at back wheel, \$25. Joe, PK 223-9693.

SCHWINN, boy's 20", 1 yr old, absolutely perfect (like new) \$75. Robert, OF 274-2211.

PETS

SILVER TABBY PERSIAN (m) CFA reg, champion parents, to loving attentive home, B/O. Ramon, AC 232-2292.

SILVER TABBY CAT (f) spayed, 3 yrs old, affectionate, FREE to loving home. Sally, MR 231-4037.

MARE, reg standardbred, 10 yrs old, nds work under saddle, gd manners, \$1000. Lorna, HL 225-4114.

DOGS, ShiTzu, AKC reg, black/white, 1(f)1(m) shot, very petite, \$300/ea. Karin, MS223-6238.

GERBILS, FREE. Marilyn, PK 223-9319.

KITTENS, long-haired, white/tan/calico, born 6/1, FREE. Glenn, HL 225-5104.

KERRY BLUE TERRIER (f) AKC, gd family pet, 3 yrs old, housebroken, reasonable. Pat, PK 223-9646.

CAMPERS & TRAILERS

1968 17' GLOBESTAR TRAVEL TRAILER, slps 5, fully self-contained. Laura, ML 223-2513.

1971 INTERNAT'L TRAVELALL 4X4, auto, p/s, drive train, body rust, \$800 or B/O. John, BP 235-3341.

APACHE CAMPER, slps 6, new screening, gd tires, icebox, refriger, \$700. Becky, BU 249-4210.

BOATS

CANOE, Lincoln 14' extra wide, birch color, used 1 season, \$350 or B/O. Lucy, TW 247-2413.

SAILBOAT, 12' fiberglass Beetle Cat w/trlr, motor, many extras, \$1200 or B/O. Brenda, PK 223-2728.

SAILBOAT, Tanzer 22', 3 Hood sails, 7.5hp Merc, 3rd season. Steve, BU249-4938.

TRADE

'72-'74 PICK UP TRUCK for 14' TRAVEL TRAILER w/stove, frig, sink, more. Linda, BP 235-3338.

CARS

'76 DODGE ROYAL MONACO, gold w/vinyl rf, a/c, 70K mi, v8, many extras, exc cond, \$2000. Sue, WU239-2221.

'78 TOY LANDCRUISER, am/fm cass, exc cond, \$50 (negotiable). L. Bennett, CF 251-1523.

'80 VW RABBIT Diesel, air, sunrf, Michelins, 11K mi, 52mpg hwy, 45 city, B/O. Del, TW 247-2283.

'80 CHEVY LUV 4X4 Mikado Special, 5K mi, still under warranty. Debbie, PK223-1953.

CARS continued

'80 Z28 CAMARO, blk w/blk int, every option except T-roofs, \$7600 or B/O. Todd, ML 223-3727.

OLDS 88, auto, ps/pb, a/c, new steel rads, 77K 1 owner, trlr hitch, \$975. Tony, HL 225-4906.

'78 DATSUN B210, am/fm 8 tr, 30-35mpg, relocating in Europe, \$3500. Ron, PK 223-5720.

'71 AMC HORNET, brown, 4dr, 6cyl, auto trans, ps/pb, 73K mi, very gd cond, \$1200. Kathy, CF 251-1420.

'79 CAPRI TURBO, 37K mi, radials, am/fm, 4 spkr stereo, black, \$5000 firm. Ruth, PK223-2640.

'74 DODGE DART SWINGER, slant 6 eng, a/t, gd gas mi, reliable car, \$1500. Lynn, ML 223-3527.

'72 OPEL 1900, 80K mi, 30mpg, new brks/carb, am/fm, \$875. Larry, MR 231-6624.

'78 DODGE OMNI, 4 dr, 4 spd, 46K mi, \$3650 or B/O. Ken, PK 223-1854.

'77 CHEVETTE, red, 2dr, auto, 25mpg, gd cond, \$1800. Lta, TW 247-2184.

'75 TOYOTA CELICA GT, am/fm, sport style, 5 spd, gd cond int/ext, \$1200 or B/O. Ken, MR 231-7456.

'79 HONDA ACCORD LX, 5spd, a/c, am/fm stereo, 25K mi, 35mpg, exc cond, \$6200. Pam, MR 231-6444.

'80 PONTIAC GRAND LEMANS STATION WAGON, loaded w/all options, snows, \$6500. Karen, WA221-5408.

'77 BUICK SKYHAWK, silver, 4 spd, a/c, radials, V6, exc cond, \$2300. Dean, WA 221-5608.

'74 SAAB 99LE, 2dr, runs well, \$1800 or B/O. Richard, MR 231-7331.

'75 FORD PINTO HATCHBACK, std trans, incl am radio, std snow tires. Terri, MR 231-4867.

'82 FORD COBRA II, new shocks/clutch, brks, 4spd, \$3000 firm. Tony, PK223-2901 (4 to 10 pm).

'77 MAZDA GLC HATCHBACK, 3dr, am/fm, 4 spd, 38K mi, gd cond, \$2750 or B/O. Art, PK223-9329.

'68 SAAB V4, move it, it's yours! Spare parts or, for gd mechanic, transport. Suford, ML223-9644.

'74 AMC MATADOR, yellow, 6cyl, gd gas mi, gd body, \$800. Miriam, PK 223-4907.

'79 SAAB 900 TURBO, a/c, sunrf, ps/pb, new tires, am/fm case, 52K mi, \$8000. Jim, MR 231-5937.

'66 thru '71 MOPAR 426 Hemi cars, engines or parts wanted. Carl, SP 243-2232.

'80 CHEVROLET MONZA COUPE, 4cyl, 4spd, under 10K mi, tintd glass, \$4700. Sandra, ZX 253-2470.

'73 VW SUPER BEETLE, new brks/clutch, hi mi, runs & looks great, \$1800. Rick, ML 223-4481.

'73 AUDI 100LS, 4dr, std, am/fm stereo 8 track, sun-roof, \$400. Barry, MR 231-6629.

'70 CHEVY IMPALA, \$300. Chris, PK 223-3655.

'79 FIAT STRADA, 4dr h/b, auto, 30mpg, am/fm, roof rack, 4 cyl, 22K mi, \$4575. Bob, PK 223-5861.

'69 G.T.O./400 Ramair motor, 4spd, body no rust, \$2,000 or trade for '69 AMX. Phuco, SP243-2226.

'75 MAVERICK, 4dr, 6cyl, auto, no rust, \$2000. Bill, TW 247-2832.

'71 BUICK LESABRE CONVERT, new paint, top, eng, trans completely redone, \$2000. Teresa, MS223-4190.

'80 OLDSMOBILE STARFIRE, ps/pb, V6, 4spd, am/fm stereo, sunrf, more, \$5000. Stuart, SP 243-2491.

d1 DATSUN 210 WAGON, 4dr, auto, am/fm, rear defog, rec seats, 5500 mi, \$5850. Brian, PK 223-4200.

'75 LANCIA BETA, 5spd, 4dr, sunrf, 51K mi, gd cond, \$2150 or B/O. Jane, ML 223-6586.

'75 AUDI FOX STA WAGON, sunrf, hi mi, 30mpg, some rust, \$800 or B/O. Dave, TW 247-2083.

'80 MAZDA MINI PICKUP, B2000 long bed model, am/fm case, 26K mi, exc cond, \$4000. Curt, ML223-8969.

'72 VW SUPERBEETLE, 30mpg, newly rebt eng, very reliable, \$700 or B/O. Glenn, ML223-8356.

'72 OPEL GT, auto, low mi, new tires, great on gas, nds some work, \$1300 or B/O. Margaret, ML223-6029.

'72 CAPRI 2000, 4spd, gd cond, 6 mtd tires, hi mi, \$800 or B/O. Eliot, NR234-4330.

'73 MERCURY COUGAR, ps/pb, gd cond, \$1000. Gordon, NR 234-4243.

'80 CHEVY MONZA, auto, 4cyl, am/fm, rear def, \$200 rust warr, 15K mi, \$5000 firm. John, ML 223-2308.

MISCELLANEOUS

TIFFANY LAMP, octagon, hang from ceiling w/chain, gold/beige/white, \$150. Maureen, LM 231-7272.

CHAIN LINK FENCE, 150' complete w/posts/rails 4'H, green vinyl coated. Alfred, MS 223-2922.

SNOWBLOWER, Ariens 4HP. CARPET, orange plush w/pad, 10'X16'. USED BRICKS. Letha, PK 223-4428.

HOME ENTERTAINMENT COMPUTER, full kybd, case dr, joystick, 15 game tapes, \$200. Gary, BU 249-4700.

BABY ITEMS: GM Luv seat \$20; Playpen \$25; Gerry Carrier (front) \$10, exc cond. Jerry, PK 223-7295.

FENDER "MUSTANG" GUITAR, red body/nat oak neck, nds minor switch work, \$225. Patrick, HL225-4700.

FIBERGLASS CAP 8', 3 sliding windows w/screens/dome light, \$350. Ronald, WJ 257-1154.

STAR RIDER, 1 yr old, exc cond, \$25. Janet, HL 225-4849.

TENNIS RACKET T-2000, 4 5/8" grip, recently re-strung, exc cond, \$25 or B/O. John, LM 231-4668.

WETSUIT, Parkways 1/4" Nylon II, am bottom, med top, \$55. Richard, ML 223-2390.

DINETTE SET, wooden table w/4 chairs, used, \$70. Edward, ML 223-3396.

COOKWARE SET (20pc) stainless steel, \$300 or B/O. CAMERA AGFA Rapid, \$10 or B/O. Angela, MR231-4098.

PACHINKO GAME, \$40. Bob, LW 247-2913.

CHINESE SILK BANQUET GOWN, pink w/plum blossom beaded embroidery, sz 6/7, B/O. Debbie, BU249-4765.

SEIKO QUARTZ WATCH, 6 mos old, exc cond (\$160 new) \$100. Kelly, ML 223-9678.

WOOL CARPET 10X14, light beige, exc cond, plus some matting, \$400. Gregory, PK 223-9481.

MODIFIED SANYO VCC9000, studio quality color video, blt in monitor, \$6000. Dave, PK223-8668.

CHINA HUTCH/BUFFET, 2 pc, walnut, exc cond, \$250. Frank, ML 223-4029.

PHILIPS TURNTABLE GA312, electronic controlled w/cartridge, exc cond, \$120. Laura, MR231-4559.

GARAGE DOOR (9'X6.5') w/hdw, \$75 or B/O. STORM DOOR 36"X80", \$50 or B/O. Roland, MS 223-3335.

AM RADIO, fits Chevy Citation in dash, \$20. Dave, EH 272-3676.

STEREO, 2 spkrs, am/fm 8 track comp, w/w/o turntable, \$100 or B/O. Ron, ML 223-7458.

CAR STEREO, am/fm cassette, in-dash, autoreverse, new, \$85. Jack, AC 232-2402.

SOUND DESIGN TURNTABLE+SPEAKERS STEREO w/dust cover \$50. Maureen, LM 231-7272.

OAK DESK 60"X34"X30"H, refinished, \$175. Frank, ML 223-9878.

ROCKING CHAIRS (2), cherry arrow-back, \$50; black Danish modern, \$35. Judith, ML 223-3543.

DINING RM SET, medit style, blk wrought iron octagon table, 4 chairs, \$250. Jeanne, MR231-6657.

QUEEN SIZE FOUNDATION, used in place of box springs, firm support, \$60. Dick, ML 223-4583.

STEREO STAND \$25. COUCH (folds into bed) \$50. RECLINING CHAIR \$20. RUG \$25. Angela, PK223-5790.

DOOR, pre-hung, 36"W, hollow core, grilled opening top/bottom, B/O. Bob, AK246-2279.

LARGE FUR BEAN BAG, exc cond, \$20. Richard, MR 231-4156.

BABY ITEMS: Crib (\$60), Playpen (\$20), Car Seat (\$10), Stroller (\$20). Omur, WZ 238-3372.

COFFEE TABLE, walnut w/smoked glass top, \$45. SHAG RUG, green, 9'X12" w/pad, \$10. Peter, ML 223-3024.

TENNIS RACKET, Spaulding Lotus, 4 1/2 grip, \$45. Suzanne, PK 223-4426.

DOUBLE BED, red maple, mattress/box spring, exc cond, hardly used, \$100. Alice, TW 247-2178.

AR TURNTABLE, Model XA, dual spd, dust cover, exc cond, \$30 firm. Kate, TW 247-2683.

FENCE, mounts on top 24' round pool, \$100. FILTER, stainless steel, pump, \$125. Claudia, ML223-3647.

UTILITY TRAILER, nds some work, \$50. Lyn, PK223-8424.

OIL TANK, 275 Gal, w/legs, fittings, FREE. Ed, CF 251-1573.

KITCHEN CABINETS, pine, hand made, sink, perfect for cottage, \$300 or B/O. Chris, ML223-2517.

HEAVY DUTY HAND TRUCK \$20. ROOFING NAILS, 22#, 1 1/2" \$10. Bill, MR 231-4785.

GIRL'S RIDING JACKET, navy blue, sz 13/14, exc cond, \$35. Linda, ML223-6029.

CRIB, wood, w/mattress \$20. ROTOTILLER, Sears 5HP, 2 yrs old, exc cond, \$550. Judi, ML 223-7900.

Type or clearly print your ad and send to Marketplace, PK3-1/K23. Ads are published on a first-come, first-served basis for Digital employees. The full name and all seven digits of the employee's DTN number must be submitted with the ad.

Category _____

Item _____

Description (include price) _____

DTN telephone number _____

Location _____

Full name _____

The LCG team celebrates New Year's Day



The new Large Computer Group team celebrated their New Year's Day kickoff on June 29. Rose Ann Giordano, (ctr.) product group manager, poses with her direct reports.



The new Large Computer Group (LCG) cuts its market into four pieces, education, data services, commercial and technical. The celebration was arranged so the LCG team could get to know each other.

Escape to the mountains

Digital's Employee Activities department is offering a classic escape weekend at the Mount Washington Hotel in Bretton Woods, N.H., on Aug. 28-30.

All employees are invited to the weekend which includes two overnight accommodations, tennis, indoor/outdoor pools, sauna, live entertainment, golf, horseback riding, bicycling and trout fishing.

The package price is \$117 per person (double occupancy); \$135 per person (single occupancy). Children sharing a room with two adults are \$18 a day (2-5 years old) and \$35 a day (6-14 years old). Some activities mentioned have additional fees.



A deposit of \$25 per person is required with reservations. See your local Employee Activities department for reservation cards and more details. Deadline for reservations have been extended to Aug. 10.

Insect stings can be dangerous

The stings of venomous insects such as bees, wasps, yellow jackets and hornets are painful and annoying to most, life-threatening to some. Fortunately most of these creatures will sting only as a mechanism of self-defense but sudden movements or accidental uncovering of a hive or resting place often excites them.

Although bees and wasps usually invite themselves to outdoor gatherings, you can minimize the risk of being stung by complying with the following measures:

1. If a bee, wasp or yellow jacket approaches you, avoid sudden movements.
2. Wear light, solid color clothing. Stinging insects are attracted by bright, contrasting colors in flower designs and by dark colors.
3. Approach picnic areas with caution. Food left behind attracts bees.
4. Never go barefoot -- bees love clover and yellow jackets live in the ground.
5. Garden with caution to avoid stinging insects on plants and always cover as much of your body as possible.

If you are stung by a bee or wasp, your first reaction may be to pull out the remaining stinger with your fingers. This will only serve to break open the venomous sac and release its contents. Instead, try to flick the stinger out of the skin using a pointed object such as a nail file.

A paste made from either meat tenderizer or baking soda and water and applied for at least 15 minutes, will reduce swelling. Those persons known to have severe reactions to bee stings should carry emergency sting kits containing injectable epinephrine, available from the doctor. A stung victim who shows signs of headache, nausea, weakness, anxiety, abdominal pains and difficulty in breathing, is probably allergic. If an emergency epinephrine kit is not available, the person should be taken to the hospital immediately.