

THIS DRAWING AND SPECIFICATIONS HEREIN ARE THE PROPERTY OF DIGITAL EQUIPMENT CORPORATION AND SHALL NOT BE REPRODUCED OR COPIED OR USED IN WHOLE OR IN PART AS THE BASIS FOR THE MANUFACTURE OR SALE OF ITEMS WITHOUT WRITTEN PERMISSION.  
 COPYRIGHT © 1977, DIGITAL EQUIPMENT CORPORATION

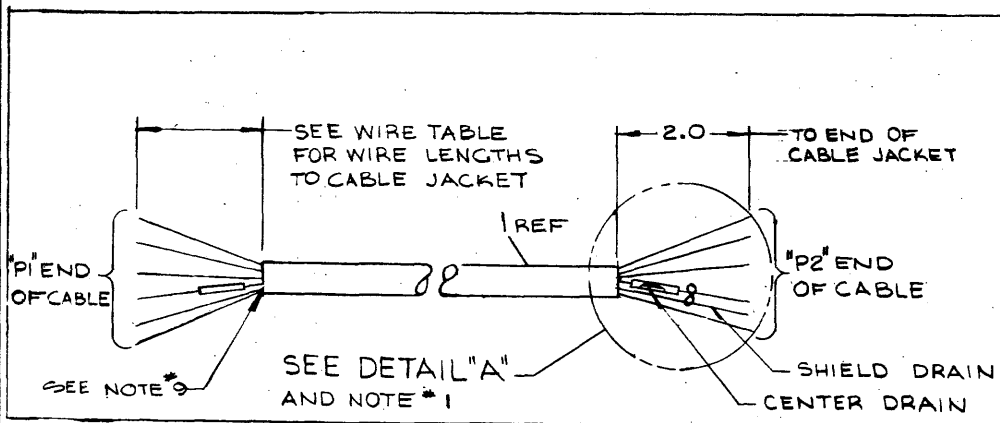
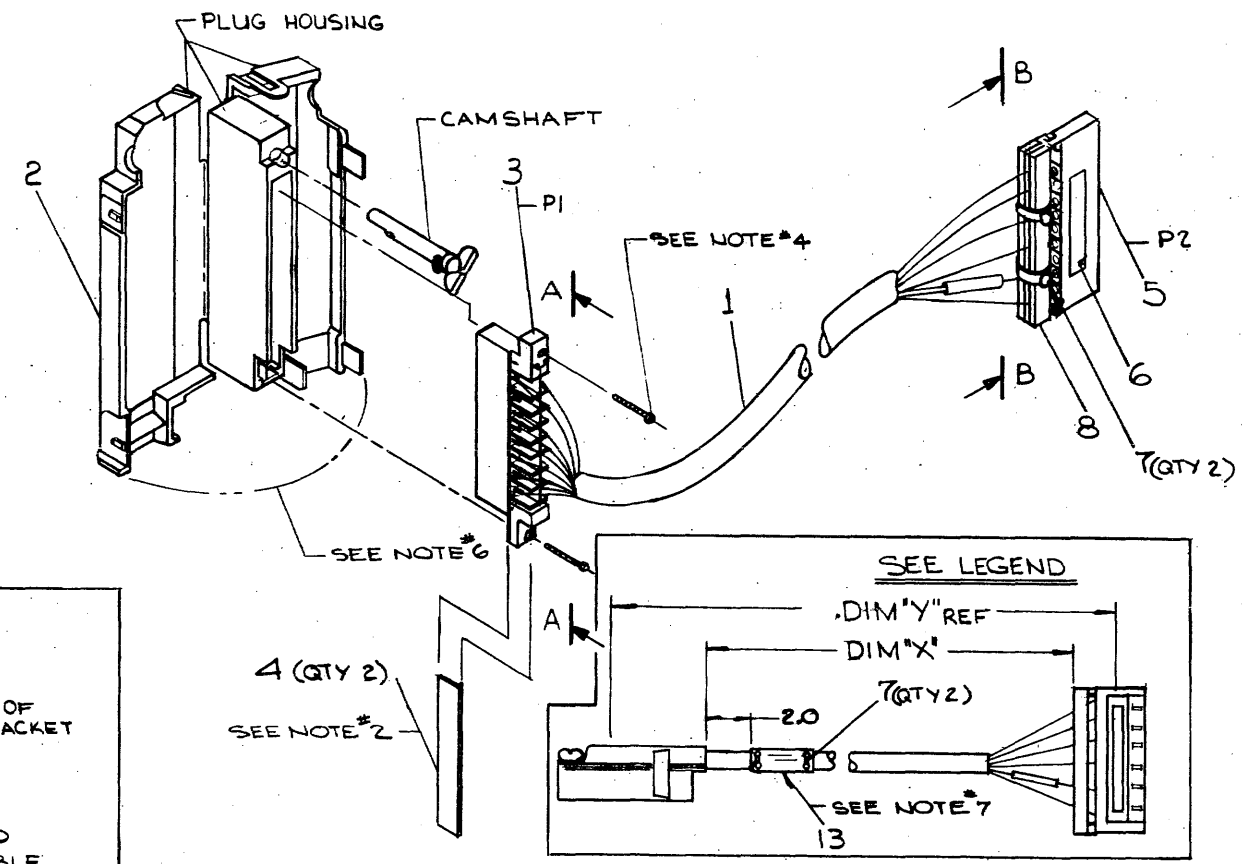
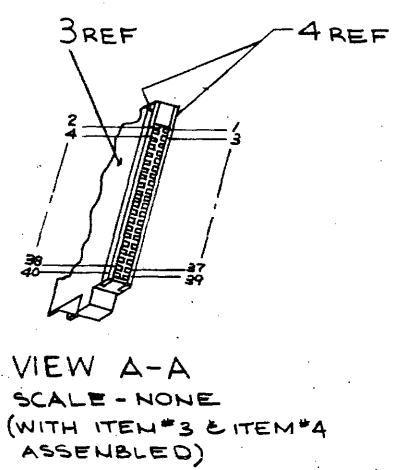
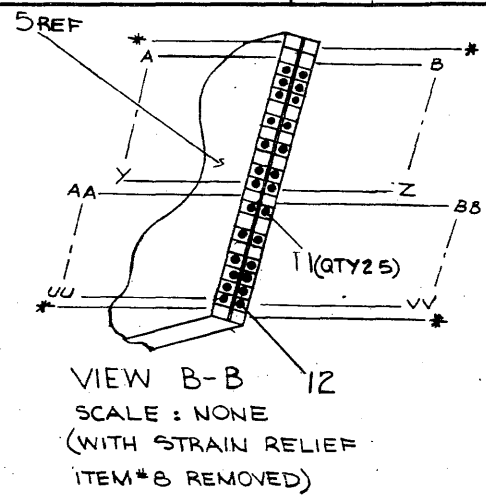
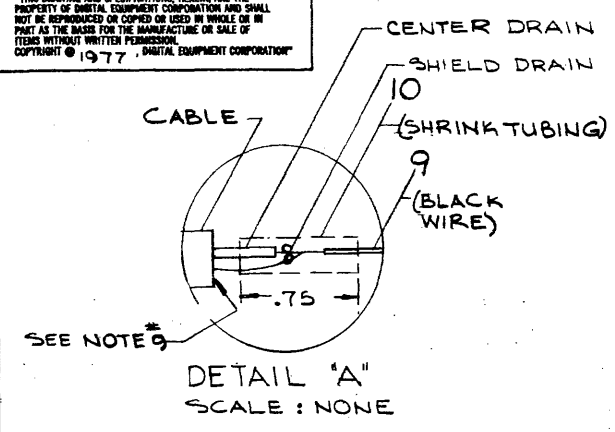
0-0-10808 M1a 2

LEGEND		
NUMBER	DIM"X" VARIATION	DIM"Y" (PRE-CUT) REF
BC80J-10	10FT-0IN. ± 2 IN.	10FT-4.50 IN.
BC80J-20	20FT-0IN. ± 3 IN.	20FT-4.50 IN.
BC80J-30	30FT-0IN. ± 6 IN.	30FT-4.50 IN.
BC80J-50	50FT-0IN. ± 1 FT.	50FT-4.50 IN.
BC80J-75	75FT-0IN. ± 1 FT. 6 IN.	75FT-4.50 IN.
BC80J-04	4 FT-0IN. ± 1 IN.	4 FT-4.50 IN.
BC80J-06	6 FT-0IN. ± 2 IN.	6 FT-4.50 IN.

**NOTE:**

- CUT CENTER & SHIELD DRAIN BACK TO 1.0 IN. FROM JACKET AND STRIP INSULATION OF CENTER DRAIN APPROXIMATELY .30 IN. THEN USING BLACK WIRE (ITEM 9) AND STRIPPING INSULATION ON ONE END APPROXIMATELY .30 IN. TWIST TOGETHER STRIPPED AREAS OF CENTER DRAIN AND BLACK WIRE ALONG WITH SHIELD DRAIN AND SOLDER CAREFULLY THEN APPLY SHRINK TUBING (ITEM 10) OVER SOLDERED AREA. (SEE DETAIL "A".)
- AFTER ASSEMBLING WIRES TO PLUG (PI) INSTALL CONTACT COVER (ITEM 4) OVER CONTACTS.
- CUT BACK WHT WIRE TO CABLE JACKET BOTH ENDS OF CABLE.
- SCREWS (#2 x .3 LG SELF TAPPING) ARE PART OF PLUG HOUSING AND CAMSHAFT KIT (ITEM #2)
- REF ONLY, CONTACT (DEC. PART # 1211591-27) FOR REPLACEMENT ONLY
- PRIOR TO SNAPPING SIDES OF PLUG HOUSING TOGETHER CARE SHOULD BE TAKEN TO ASSURE THAT ALL WIRES ARE SUFFICIENTLY WITHIN HOUSING TO PREVENT PINCHING OF INDIVIDUAL STRANDS
- CABLE TO BE MARKED WITH PART NUMBER BC80J & REV IN AREA SHOWN
- \* DENOTES CAVITIES NOT TO BE USED OR DESIGNATED BY LETTERS
- ALTERNATE PART NO. FOR ITEM #1 (1700051-01) IS 1700051-00. WHEN USING THIS ALTERNATE PART CUT OFF UNUSED CONDUCTORS AT BOTH ENDS OF CABLE JACKET.

FOR WIRE TABLE SEE SHEET #2



FOR PARTS LIST SEE K-PL-BC80J-0-0

REVISIONS  
CHANGE NO.  
CHK

QUANTITY & VARIATION	DESCRIPTION	DWG./PART NO.	ITEM NO.
	UNLESS OTHERWISE SPECIFIED DIMENSIONS ARE IN INCHES		
	ANGLES	CLASS OF ACCURACY	
	30° 30'	OVER 0.2 TO 0.4	NOMINAL DIMENSION RANGE INCHES
		OVER 0.4 TO 0.75	0.2 TO 0.4
		OVER 0.75 TO 1.25	0.4 TO 0.75
		OVER 1.25 TO 2.0	0.75 TO 1.25
		OVER 2.0 TO 4.0	1.25 TO 2.0
		OVER 4.0 TO 8.0	2.0 TO 4.0
		OVER 8.0 TO 16.0	4.0 TO 8.0
		OVER 16.0 TO 32.0	8.0 TO 16.0
		OVER 32.0 TO 64.0	16.0 TO 32.0
		OVER 64.0 TO 128.0	32.0 TO 64.0
		OVER 128.0 TO 256.0	64.0 TO 128.0
		OVER 256.0 TO 512.0	128.0 TO 256.0
		OVER 512.0 TO 1024.0	256.0 TO 512.0
		OVER 1024.0 TO 2048.0	512.0 TO 1024.0
		OVER 2048.0 TO 4096.0	1024.0 TO 2048.0
		OVER 4096.0 TO 8192.0	2048.0 TO 4096.0
		OVER 8192.0 TO 16384.0	4096.0 TO 8192.0
		OVER 16384.0 TO 32768.0	8192.0 TO 16384.0
		OVER 32768.0 TO 65536.0	16384.0 TO 32768.0
		OVER 65536.0 TO 131072.0	32768.0 TO 65536.0
		OVER 131072.0 TO 262144.0	65536.0 TO 131072.0
		OVER 262144.0 TO 524288.0	131072.0 TO 262144.0
		OVER 524288.0 TO 1048576.0	262144.0 TO 524288.0
		OVER 1048576.0 TO 2097152.0	524288.0 TO 1048576.0
		OVER 2097152.0 TO 4194304.0	1048576.0 TO 2097152.0
		OVER 4194304.0 TO 8388608.0	2097152.0 TO 4194304.0
		OVER 8388608.0 TO 16777216.0	4194304.0 TO 8388608.0
		OVER 16777216.0 TO 33554432.0	8388608.0 TO 16777216.0
		OVER 33554432.0 TO 67108864.0	16777216.0 TO 33554432.0
		OVER 67108864.0 TO 134217728.0	33554432.0 TO 67108864.0
		OVER 134217728.0 TO 268435456.0	67108864.0 TO 134217728.0
		OVER 268435456.0 TO 536870912.0	134217728.0 TO 268435456.0
		OVER 536870912.0 TO 1073741824.0	268435456.0 TO 536870912.0
		OVER 1073741824.0 TO 2147483648.0	536870912.0 TO 1073741824.0
		OVER 2147483648.0 TO 4294967296.0	1073741824.0 TO 2147483648.0
		OVER 4294967296.0 TO 8589934592.0	2147483648.0 TO 4294967296.0
		OVER 8589934592.0 TO 17179869184.0	4294967296.0 TO 8589934592.0
		OVER 17179869184.0 TO 34359738368.0	8589934592.0 TO 17179869184.0
		OVER 34359738368.0 TO 68719476736.0	17179869184.0 TO 34359738368.0
		OVER 68719476736.0 TO 137438953472.0	34359738368.0 TO 68719476736.0
		OVER 137438953472.0 TO 274877906944.0	68719476736.0 TO 137438953472.0
		OVER 274877906944.0 TO 549755813888.0	137438953472.0 TO 274877906944.0
		OVER 549755813888.0 TO 1099511627776.0	274877906944.0 TO 549755813888.0
		OVER 1099511627776.0 TO 2199023255552.0	549755813888.0 TO 1099511627776.0
		OVER 2199023255552.0 TO 4398046511104.0	1099511627776.0 TO 2199023255552.0
		OVER 4398046511104.0 TO 8796093022208.0	2199023255552.0 TO 4398046511104.0
		OVER 8796093022208.0 TO 17592186044416.0	4398046511104.0 TO 8796093022208.0
		OVER 17592186044416.0 TO 35184372088832.0	8796093022208.0 TO 17592186044416.0
		OVER 35184372088832.0 TO 70368744177664.0	17592186044416.0 TO 35184372088832.0
		OVER 70368744177664.0 TO 140737488355328.0	35184372088832.0 TO 70368744177664.0
		OVER 140737488355328.0 TO 281474976710656.0	70368744177664.0 TO 140737488355328.0
		OVER 281474976710656.0 TO 562949953421312.0	140737488355328.0 TO 281474976710656.0
		OVER 562949953421312.0 TO 1125899906842624.0	562949953421312.0 TO 1125899906842624.0
		OVER 1125899906842624.0 TO 2251799813685248.0	1125899906842624.0 TO 2251799813685248.0
		OVER 2251799813685248.0 TO 4503599627370496.0	2251799813685248.0 TO 4503599627370496.0
		OVER 4503599627370496.0 TO 9007199254740992.0	4503599627370496.0 TO 9007199254740992.0
		OVER 9007199254740992.0 TO 18014398509481984.0	9007199254740992.0 TO 18014398509481984.0
		OVER 18014398509481984.0 TO 36028797018963968.0	18014398509481984.0 TO 36028797018963968.0
		OVER 36028797018963968.0 TO 72057594037927936.0	36028797018963968.0 TO 72057594037927936.0
		OVER 72057594037927936.0 TO 144115188075855872.0	72057594037927936.0 TO 144115188075855872.0
		OVER 144115188075855872.0 TO 288230376151711744.0	144115188075855872.0 TO 288230376151711744.0
		OVER 288230376151711744.0 TO 576460752303423488.0	288230376151711744.0 TO 576460752303423488.0
		OVER 576460752303423488.0 TO 1152921504606846976.0	576460752303423488.0 TO 1152921504606846976.0
		OVER 1152921504606846976.0 TO 2305843009213693952.0	1152921504606846976.0 TO 2305843009213693952.0
		OVER 2305843009213693952.0 TO 4611686018427387904.0	2305843009213693952.0 TO 4611686018427387904.0
		OVER 4611686018427387904.0 TO 9223372036854775808.0	4611686018427387904.0 TO 9223372036854775808.0
		OVER 9223372036854775808.0 TO 18446744073709551616.0	9223372036854775808.0 TO 18446744073709551616.0
		OVER 18446744073709551616.0 TO 36893488147419103232.0	18446744073709551616.0 TO 36893488147419103232.0
		OVER 36893488147419103232.0 TO 73786976294838206464.0	36893488147419103232.0 TO 73786976294838206464.0
		OVER 73786976294838206464.0 TO 147573952589676412928.0	73786976294838206464.0 TO 147573952589676412928.0
		OVER 147573952589676412928.0 TO 295147905179352825856.0	147573952589676412928.0 TO 295147905179352825856.0
		OVER 295147905179352825856.0 TO 590295810358705651712.0	295147905179352825856.0 TO 590295810358705651712.0
		OVER 590295810358705651712.0 TO 1180591620717411303424.0	590295810358705651712.0 TO 1180591620717411303424.0
		OVER 1180591620717411303424.0 TO 2361183241434822606848.0	1180591620717411303424.0 TO 2361183241434822606848.0
		OVER 2361183241434822606848.0 TO 4722366482869645213696.0	2361183241434822606848.0 TO 4722366482869645213696.0
		OVER 4722366482869645213696.0 TO 9444732965739290427392.0	4722366482869645213696.0 TO 9444732965739290427392.0
		OVER 9444732965739290427392.0 TO 18889465931478580854784.0	9444732965739290427392.0 TO 18889465931478580854784.0
		OVER 18889465931478580854784.0 TO 37778931862957161709568.0	18889465931478580854784.0 TO 37778931862957161709568.0
		OVER 37778931862957161709568.0 TO 75557863725914323419136.0	37778931862957161709568.0 TO 75557863725914323419136.0
		OVER 75557863725914323419136.0 TO 151115727451828646838272.0	75557863725914323419136.0 TO 151115727451828646838272.0
		OVER 151115727451828646838272.0 TO 302231454903657293675544.0	151115727451828646838272.0 TO 302231454903657293675544.0
		OVER 302231454903657293675544.0 TO 604462909807314587351088.0	302231454903657293675544.0 TO 604462909807314587351088.0
		OVER 604462909807314587351088.0 TO 1208925819614629174702176.0	604462909807314587351088.0 TO 1208925819614629174702176.0
		OVER 1208925819614629174702176.0 TO 2417851639229258349404352.0	1208925819614629174702176.0 TO 2417851639229258349404352.0
		OVER 2417851639229258349404352.0 TO 4835703278458516698808704.0	2417851639229258349404352.0 TO 4835703278458516698808704.0
		OVER 4835703278458516698808704.0 TO 9671406556917033397617408.0	4835703278458516698808704.0 TO 9671406556917033397617408.0
		OVER 9671406556917033397617408.0 TO 19342813113834066795234816.0	9671406556917033397617408.0 TO 19342813113834066795234816.0
		OVER 19342813113834066795234816.0 TO 38685626227668133590469632.0	19342813113834066795234816.0 TO 38685626227668133590469632.0
		OVER 38685626227668133590469632.0 TO 77371252455336267180939264.0	38685626227668133590469632.0 TO 77371252455336267180939264.0
		OVER 77371252455336267180939264.0 TO 154742504910672534361878528.0	77371252455336267180939264.0 TO 154742504910672534361878528.0
		OVER 154742504910672534361878528.0 TO 309485009821345068723757056.0	154742504910672534361878528.0 TO 309485009821345068723757056.0
		OVER 309485009821345068723757056.0 TO 618970019642690137447514112.0	309485009821345068723757056.0 TO 618970019642690137447514112.0
		OVER 618970019642690137447514112.0 TO 1237940039285380274895028224.0	618970019642690137447514112.0 TO 1237940039285380274895028224.0
		OVER 1237940039285380274895028224.0 TO 2475880078570760549790056448.0	1237940039285380274895028224.0 TO 2475880078570760549790056448.0
		OVER 2475880078570760549790056448.0 TO 4951760157141521099580112896.0	2475880078570760549790056448.0 TO 4951760157141521099580112896.0
		OVER 4951760157141521099580112896.0 TO 9903520314283042199160225792.0	4951760157141521099580112896.0 TO 9903520314283042199160225792.0
		OVER 9903520314283042199160225792.0 TO 19807040628566084398320451584.0	9903520314283042199160225792.0 TO 19807040628566084398320451584.0
		OVER 19807040628566084398320451584.0 TO 39614081257132168796640903168.0	19807040628566084398320451584.0 TO 39614081257132168796640903168.0
		OVER 39614081257132168796640903168.0 TO 79228162514264337593281806336.0	39614081257132168796640903168.0 TO 79228162514264337593281806336.0
		OVER 79228162514264337593281806336.0 TO 158456325028528675186563612672.0	79228162514264337593281806336.0 TO 158456325028528675186563612672.0
		OVER 158456325028528675186563612672.0 TO 316912650057057350373127225344.0	158456325028528675186563612672.0 TO 316912650057057350373127225344.0
		OVER 316912650057057350373127225344.0 TO 6338253001141147007	

"THIS DRAWING AND SPECIFICATIONS HEREIN ARE THE PROPERTY OF DIGITAL EQUIPMENT CORPORATION AND SHALL NOT BE REPRODUCED OR COPIED OR USED IN WHOLE OR IN PART AS THE BASIS FOR THE MANUFACTURE OR SALE OF ITEMS WITHOUT WRITTEN PERMISSION. COPYRIGHT © 1977 DIGITAL EQUIPMENT CORPORATION"

WIRE TABLE									
ITEM NO.	WIRE LENGTH TO CABLE JACKET	DESCRIPTION		FROM		TO		SIGNAL NAME	REMARKS
		TWP	COLOK	CONN	TERM	CONN	TEKM		
1				PI-1		P2-A			NO CONN
				PI-2		P2-B			
	2.50	TWP	RED	PI-3		P2-C	ITEM#11	DRV ERR +	
	2.50	TWP	WHT/RED	PI-4		P2-D		DRV ERR -	
	2.38	TWP	RED	PI-5		P2-E		DRV RDY +	
	2.38	TWP	WHT/GRN	PI-6		P2-F		DRV RDY -	
	2.25	TWP	RED	PI-7		P2-H		SEC PLS +	
	2.25	TWP	WHT/ORN	PI-8		P2-J	ITEM#11	SEC PLS -	
				PI-9		P2-K			NO CONN
				PI-10		P2-L			
	2.00	TWP	RED	PI-11		P2-M	ITEM#11	STAT CLK +	
	2.00	TWP	WHT/YEL	PI-12		P2-N	ITEM#11	STAT CLK -	
				PI-13		P2-P			NO CONN
				PI-14		P2-R			
	1.75	TWP	RED	PI-15		P2-S	ITEM#11	STAT IN +	
	1.75	TWP	WHT/BLK/RED	PI-16		P2-T	ITEM#11	STAT IN -	
				PI-17		P2-U			NO CONN
				PI-18		P2-V			
	1.62	TWP	RED	PI-19		P2-W	ITEM#11	READ DATA +	
	1.62	TWP	WHT/BLK/ORN	PI-20		P2-X		READ DATA -	
	1.50	TWP	RED	PI-21		P2-Y		DRIVE CMND +	
	1.50	TWP	WHT/BLK/BLU	PI-22		P2-Z	ITEM#11	DRIVE CMND -	

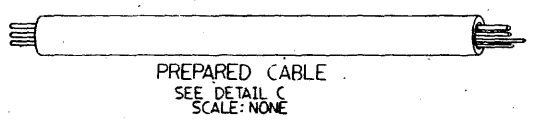
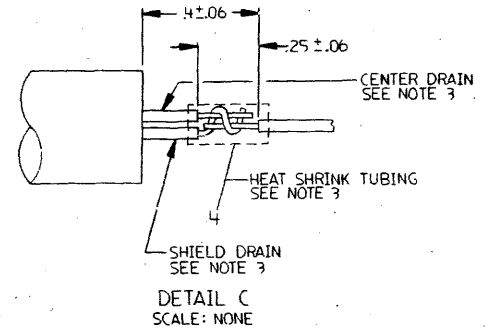
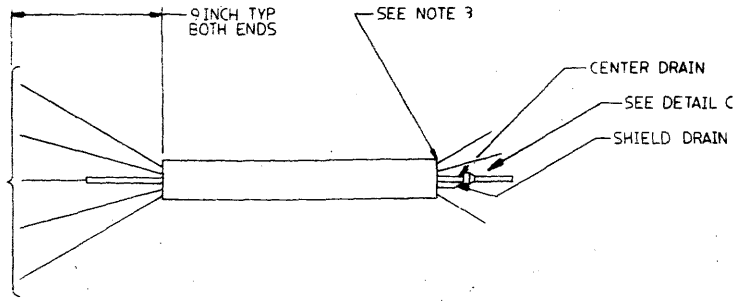
WIRE TABLE									
ITEM NO.	WIRE LENGTH TO CABLE JACKET	DESCRIPTION		FROM		TO		SIGNAL NAME	REMARKS
		TWP	COLOR	CONN	TERM	CONN	TERM		
1				PI-23		P2-AA			NO CONN
				PI-24		P2-BB			
	1.38	TWP	RED	PI-25		P2-CC	ITEM#11	WRT DATA -	
	1.38	TWP	WHT/BLK/BRN	PI-26		P2-DD	ITEM#11	WRT DATA +	
				PI-27		P2-EE			NO CONN
				PI-28		P2-FF			
	1.25	TWP	RED	PI-29		P2-HH	ITEM#11	SYS CLK -	
	1.25	TWP	WHT/GRN/RED	PI-30		P2-JJ	ITEM#11	SYS CLK +	
				PI-31		P2-KK			NO CONN
				PI-32		P2-LL			
	1.13	TWP	RED	PI-33		P2-MM	ITEM#11	WRT GATE -	
	1.13	TWP	WHT/GRN/BLU	PI-34		P2-NN		WRT GATE +	
	1.00	TWP	RED	PI-35		P2-PP		DRV SEL I -	
	1.00	TWP	WHT/GRN/YEL	PI-36		P2-RR		DRV SEL I +	
	.88	TWP	RED	PI-37		P2-SS		DRV SEL 0 -	
	.88	TWP	WHT/GRN/BLU	PI-38		P2-TT		DRV SEL 0 +	
	.75	TWP	YEL	PI-39		P2-UU	ITEM#11	DC OK	
									SEE NOTE 3
	1.75		BLK	PI-40		P2-VV	ITEM#12	GND	SEE DETAIL #1 & NOTE 1

REVISIONS		
CHK	CHANGE NO.	REV.

REV. 1  
DUA BC80J-0-0

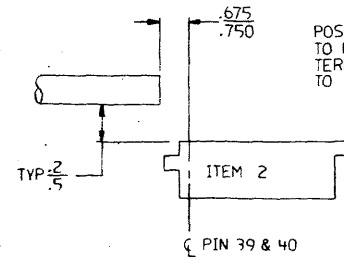
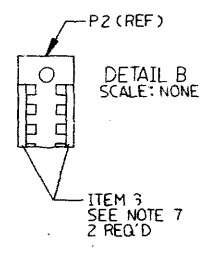
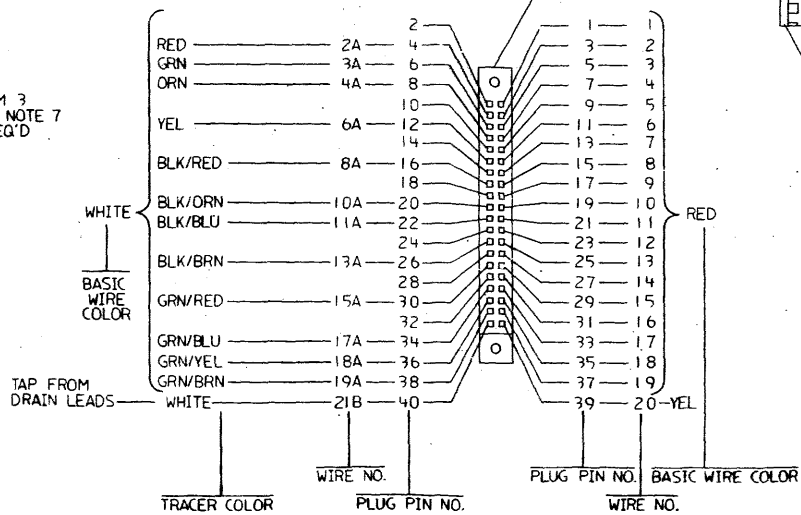
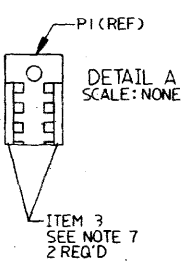
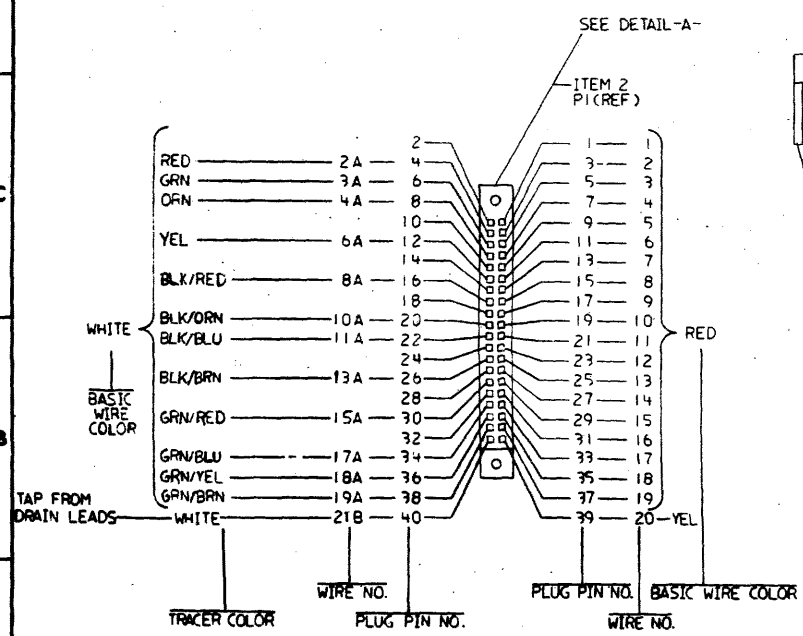


THIS DRAWING AND SPECIFICATIONS ARE THE PROPERTY OF GENERAL ELECTRIC CORPORATION AND SHALL NOT BE REPRODUCED OR COPIED OR USED IN ANY MANNER AS TO INFRINGE THE PATENT RIGHTS OF GENERAL ELECTRIC CORPORATION.



WIRE TABLE							
WIRE NO.	FROM CONNECTOR PLUG	PLUG PIN NO.	BASIC WIRE COLOR	WITH TRACER COLOR	TO CONNECTOR PLUG	PLUG PIN NO.	REMARKS
1							TWISTED PAIR
1A							
2	P1	3	RED		P2	3	
2A		4	WHT	RED		4	
3		5	RED			5	
3A		6	WHT	GRN		6	
4		7	RED			7	
4A		8	WHT	ORN		8	
5							
5A							
6		11	RED			11	
6A		12	WHT	YEL		12	
7							
7A							
8		15	RED			15	
8A		16	WHT	BLK/RED		16	
9							
9A							
10		19	RED			19	
10A		20	WHT	BLK/ORN		20	
11		21	RED			21	
11A		22	WHT	BLK/BLU		22	
12							
12A							
13		25	RED			25	
13A		26	WHT	BLK/BRN		26	
14							
14A							
15		29	RED			29	
15A		30	WHT	GRN/RED		30	
16							
16A							
17		33	RED			33	
17A		34	WHT	GRN/BLU		34	
18		35	RED			35	
18A		36	WHT	GRN/YEL		36	
19		37	RED			37	TWISTED PAIR
19A		38	WHT	GRN/BRN		38	
20		39	YEL			39	
20A			WHT				
21	P1	SEE 21B	WHT		P2	SEE 21B	SHIELD DRAIN CENTER DRAIN WIRE
21A							
21B	P1	40	WHT		P2	40	GND WIRE

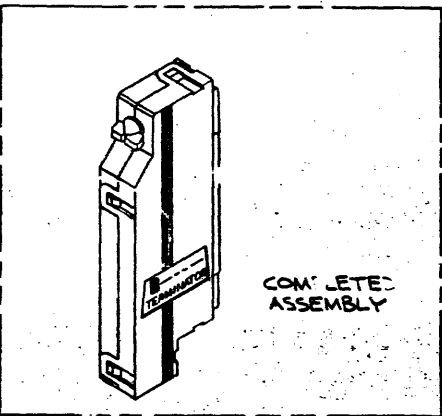
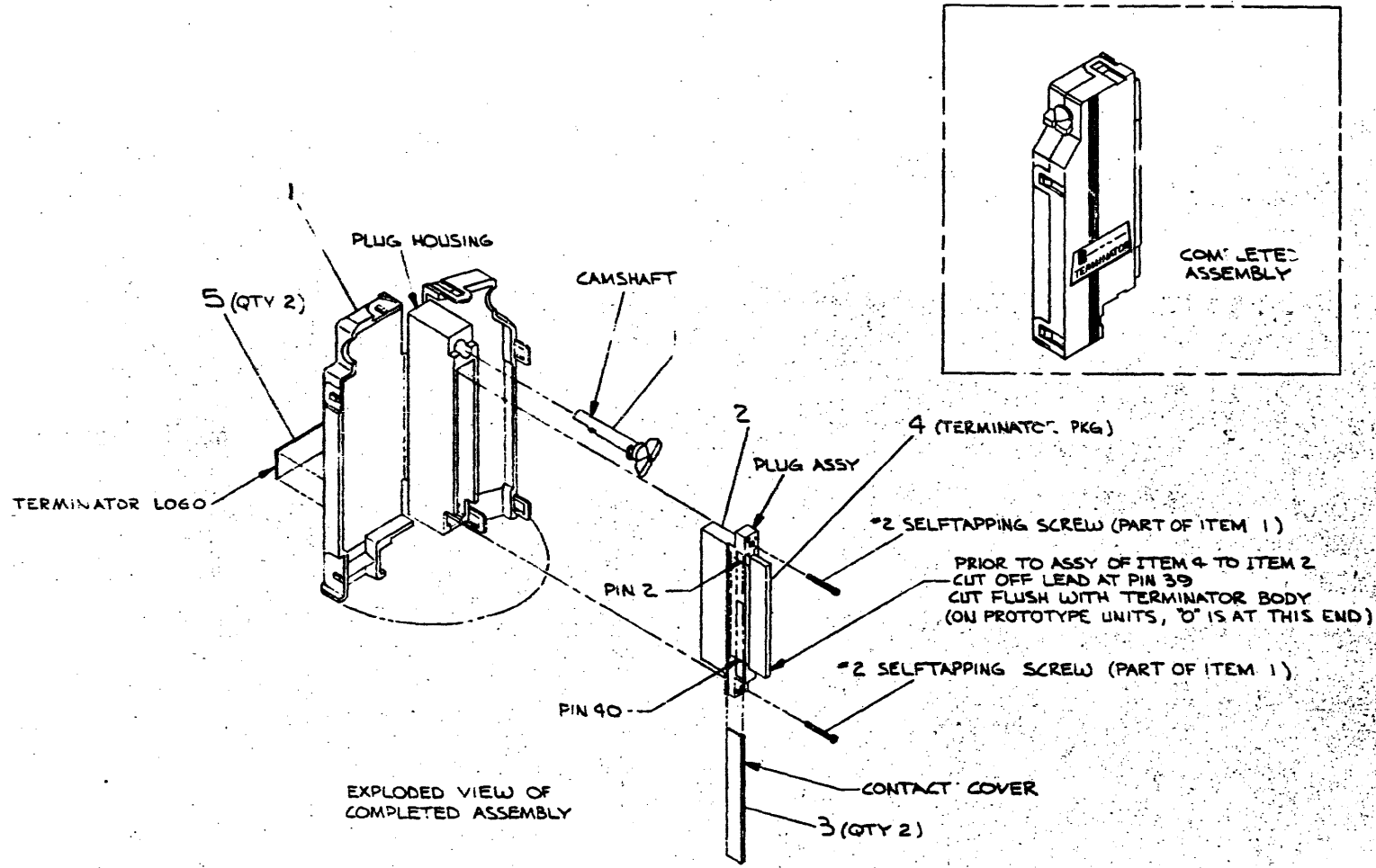
CUT WIRE NO. 20A, OFF AT JACKET (SEE NOTE 3)  
JUMP SHIELD & CENTER DRAIN TOGETHER PER DETAIL-C & TERMINATE WHT WIRE (21B) IN PIN 40.



DETAIL D SCALE: NONE

POSITION OF CABLE (ITEM 3) TO PLUG (ITEM 2) BEFORE TERMINATING CABLE LEADS TO PLUG.

THIS DRAWING AND SPECIFICATIONS HEREIN ARE THE PROPERTY OF DIGITAL EQUIPMENT CORPORATION AND SHALL NOT BE REPRODUCED OR COPIED OR USED IN WHOLE OR IN PART AS THE BASIS FOR THE MANUFACTURE OR SALE OF ITEMS WITHOUT WRITTEN PERMISSION. COPYRIGHT © 1976, DIGITAL EQUIPMENT CORPORATION



EXPLODED VIEW OF COMPLETED ASSEMBLY

2	LOGO, TERMINATOR	A-DC-714676-0-0	3
1	TERMINATOR PKG	1313242-00	4
2	COVER, CONTACT	1211591-11	3
1	PLUG ASSY	1211591-07	2
1	CONTACT PLUG W/SC & CONTACT RT	1211591-34	1

DESCRIPTION		QTY	PART NO.	ITEM NO.
UNLESS OTHERWISE SPECIFIED DIMENSIONS ARE IN INCHES				
TOLERANCE DIMENSION RANGE SYSTEM				
FINISH	CLASSIFY	MIN	MAX	MIN
ASSEMBLY	ACCURACY	0.001	0.002	0.001
PRECISION	CHECK DIM	0.001	0.002	0.001
PRECISION	PREFERRED	0.001	0.002	0.001

	DIRECT: <i>[Signature]</i> CHECKED: <i>[Signature]</i> ENG'D: <i>[Signature]</i> PROJ. ENGR: <i>[Signature]</i> PROJ. DATE: <i>6/6/76</i>	FIRST USED ON: <b>EKG6</b> TITLE: <b>TERMINATOR ASSY</b>
MATERIAL: <b>E-1A-RK611-0-0</b> FINISH: <b>SEE PARTS LIST</b>	NEXT HIGHER ASSY: SCALE: <b>NONE</b> SHEET: <b>1</b> OF <b>1</b>	SIZE: <b>D</b> CODE: <b>TA7012293-0-0 A</b> NUMBER: <b>1</b> REV.

REV. 1	DATE	BY	CHK
1	7/23/76	W. DUNHAM	W. DUNHAM
2			