

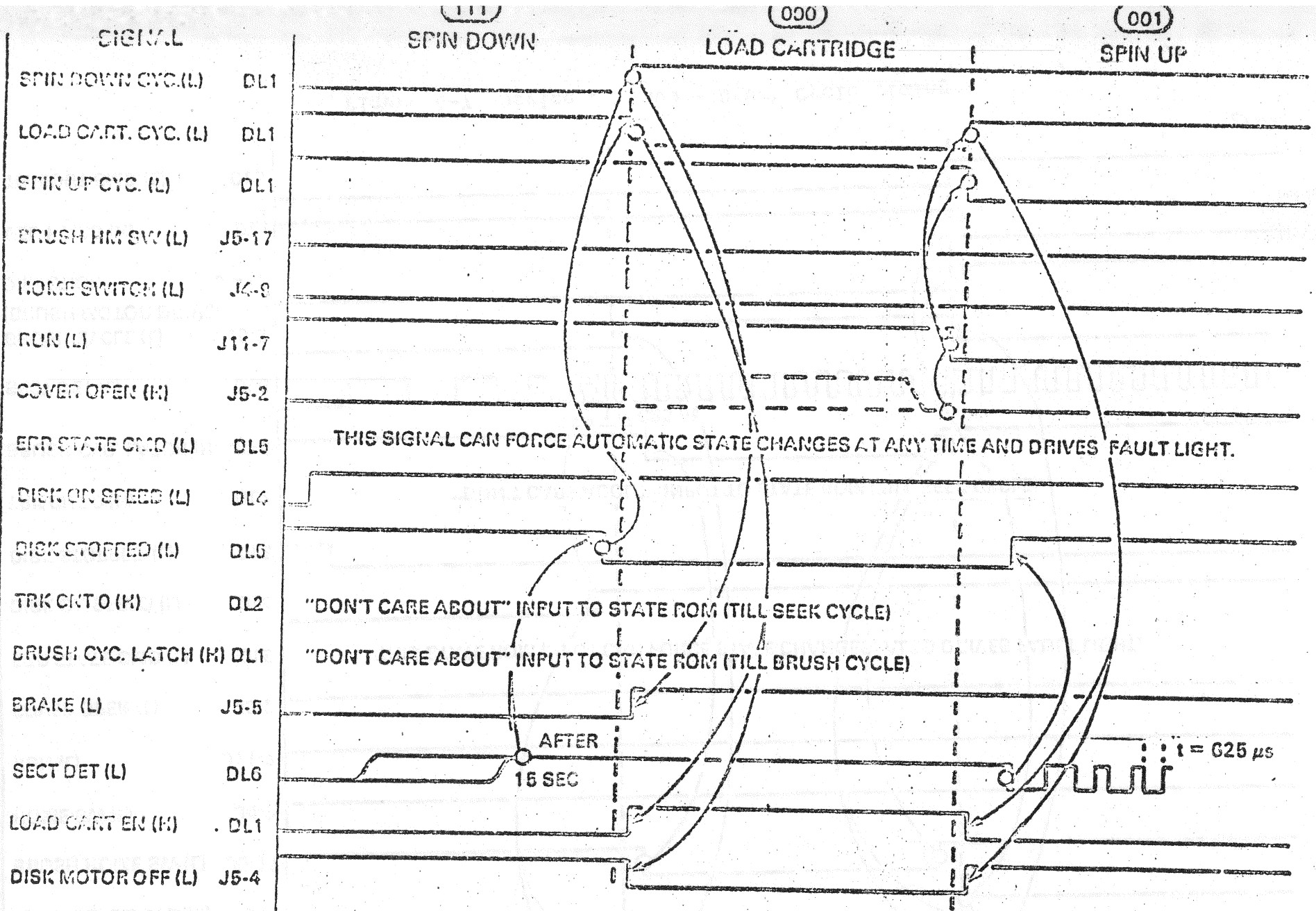
DICK BAILEY

digital

RL01 SEQUENCES

RL01





GZ-1022

Figure 4-3 Device Startup - Load Cartridge Timing

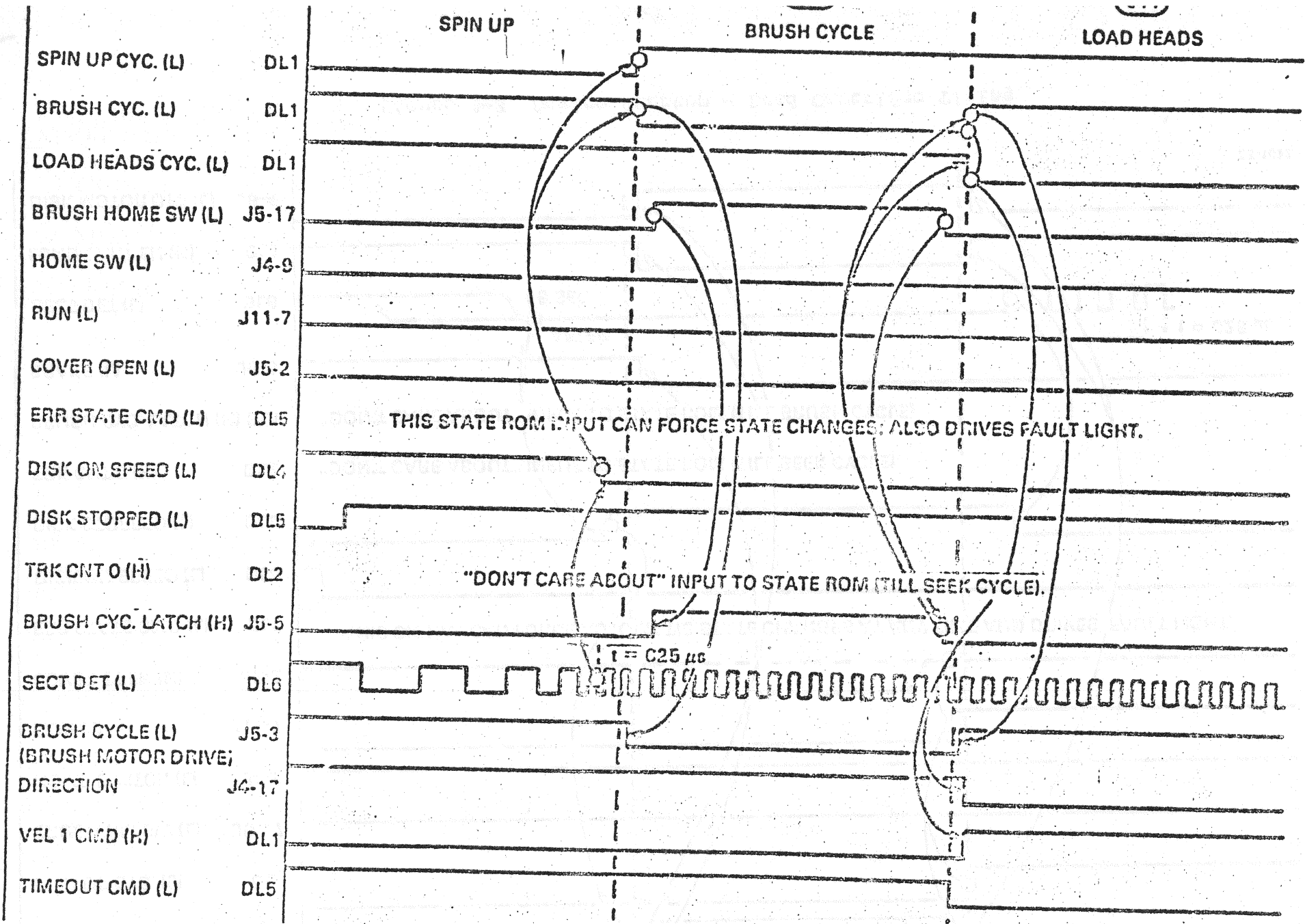
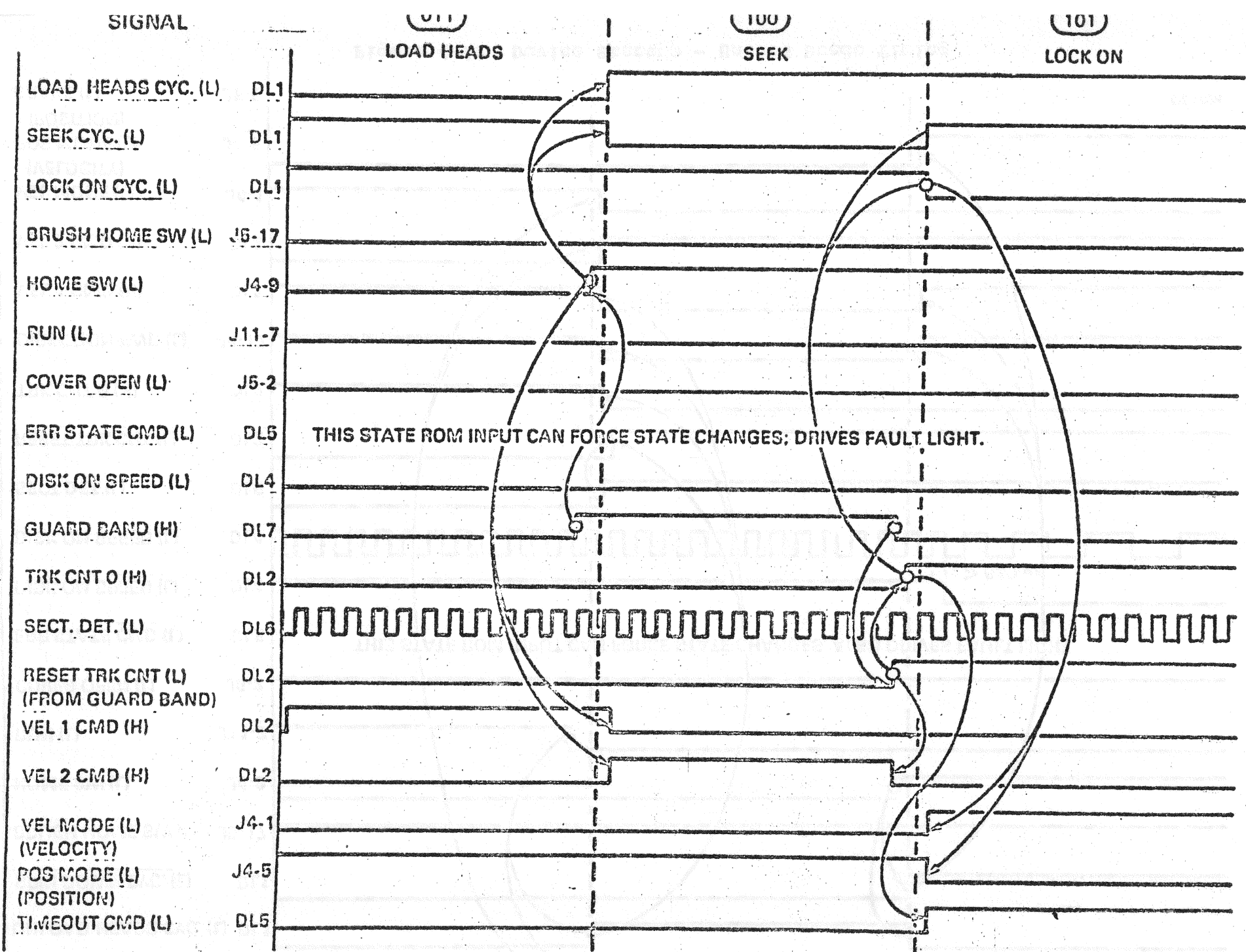


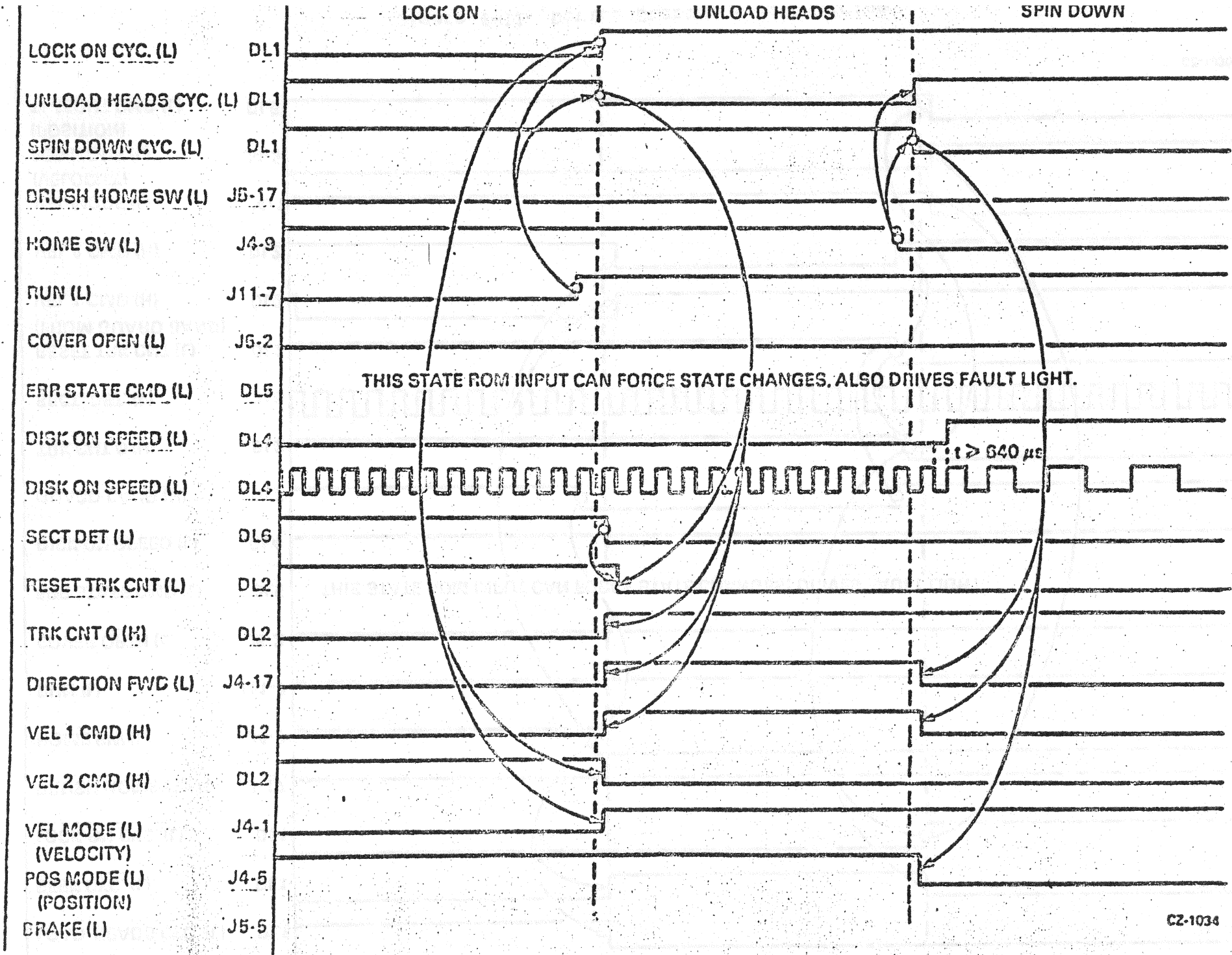
Figure 4-7 Device 8 Setup - Brush Cycle Timing



CZ-1030

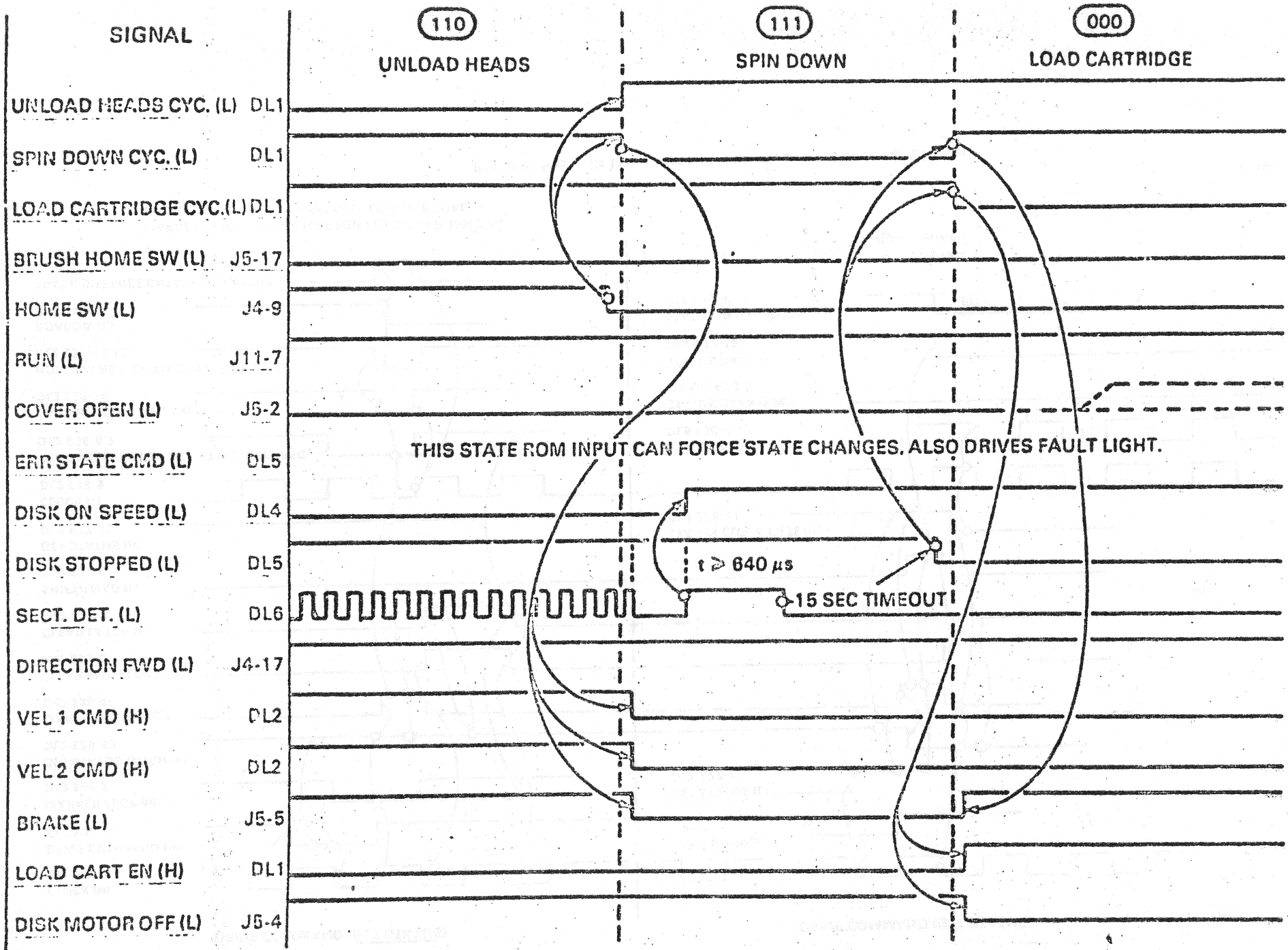
Figure 4-11 Device Startup - Seek Timing

W



CZ-1034

Figure 4-15 Device Startup - Unload Heads Timing

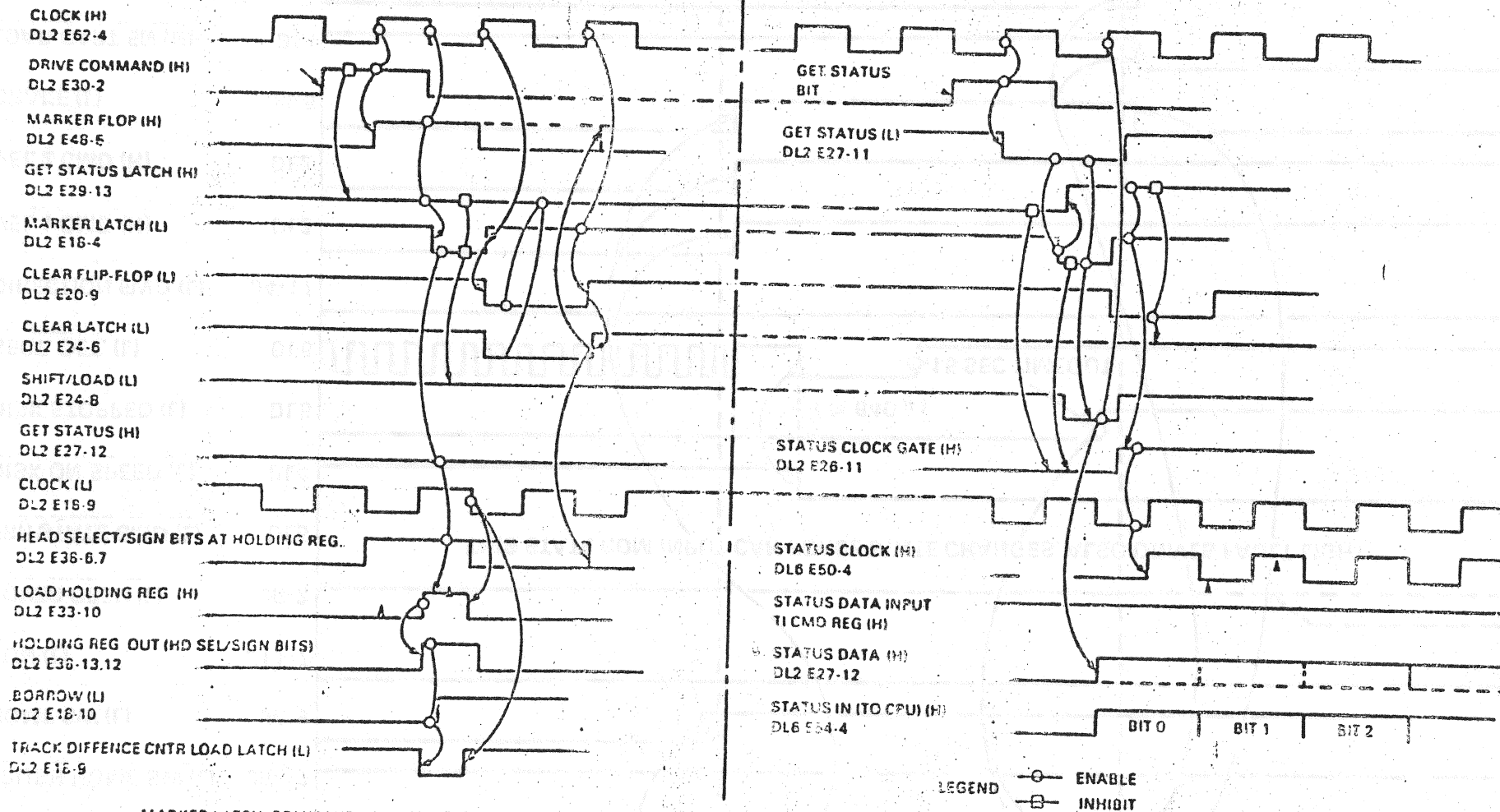


CZ-1030

Figure 4-17 Device Startup - Spin Down

DRIVE COMMAND (GET STATUS)

DRIVE COMMAND (GET STATUS)



MARKER LATCH, COMMAND REGISTER CLEAR, HOLDING REGISTER AND TRACK DIFFERENCE COUNTER LOAD

Figure 5-5. Drive Command and Status Control Timing

9

7

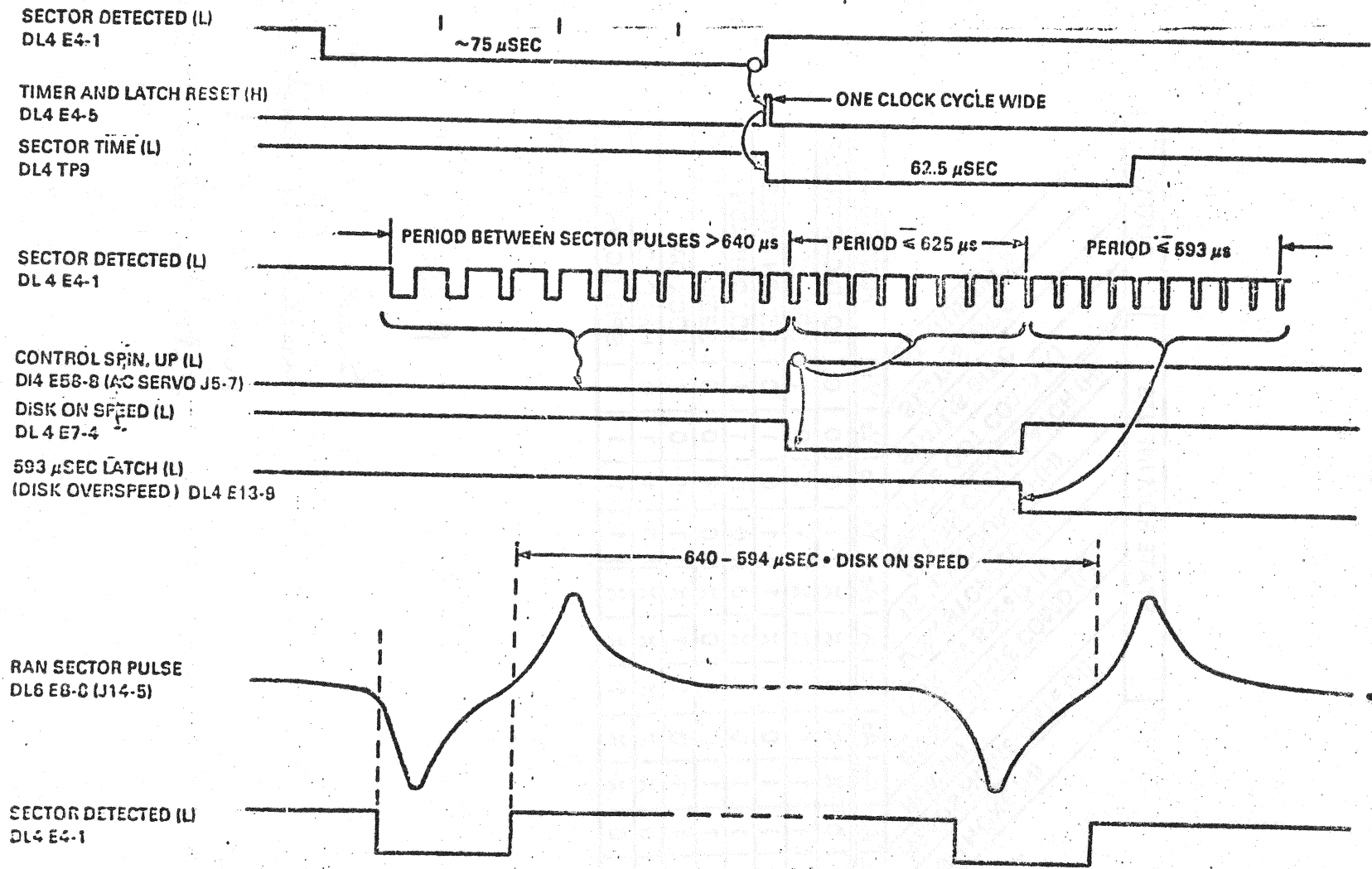


Figure 5-8 Sector Detection and Speed Control Timing

C2-1051

Figure 5-1 State Control ROM Addressing

STATE ROM INPUTS								OUTPUT				
A ₇	A ₆	A ₅	A ₄	A ₃	A ₂	A ₁	A ₀	Y ₄	Y ₃	Y ₂	Y ₁	FUNCTION
1	1	0	X	X	0	X	X	1	0	0	0	LOAD CARTRIDGE
1	1	1	1	1	X	X	X	1	0	0	1	SPIN UP
1	1	1	1	0	1	X	1	1	0	1	0	BRUSH CYCLE
1	1	1	1	0	1	X	0	0	0	1	1	LOAD HEADS
1	0	1	1	0	1	0	X	0	1	0	0	SEEK
1	0	1	1	0	1	1	X	1	1	0	1	LOCK ON
1	0	0	X	X	X	X	X	0	1	1	0	UNLOAD
1	1	0	X	X	1	X	X	1	1	1	1	SPIN DOWN

CZ-1043

POWER UP

Brushes home SW
inactive & pushes
ROM into Brake
state for about 15 secs

Figure 5-2 State ROM Command Decoding Scheme

STATUS A	STATUS B	STATUS C	LOAD CART	SPIN UP	BRUSH	LOAD HDS	SEEK	LOCK ON	UNLOAD	SPIN DOWN
0	0	0	0	1	1	1	1	1	1	1
1	0	0	1	0	1	1	1	1	1	1
0	1	0	1	1	0	1	1	1	1	1
1	1	0	1	1	1	0	1	1	1	1
0	0	1	1	1	1	1	0	1	1	1
1	0	1	1	1	1	1	1	0	1	1
0	1	1	1	1	1	1	1	1	0	1
1	1	1	1	1	1	1	1	1	1	0

CZ-1044

Figure 5-4 Seek Control ROM Addressing

SEEK CONTROL ROM INPUTS								OUTPUTS				
A ₇	A ₆	A ₅	A ₄	A ₃	A ₂	A ₁	A ₀	Y ₀	Y ₃	Y ₂	Y ₁	FUNCTION
1	X	X	X	X	X	X	X	0	0	0	0	ILLEGAL
0	1	0	0	1	0	X	X	0	0	0	1	SERVO OFF
0	1	0	0	1	1	X	X	0	0	1	0	INNER GUARD BAND
0	0	1	1	X	X	X	X	0	0	1	1	OUTER GUARD BAND
0	1	1	0	X	X	X	X	0	1	0	0	LOAD HEADS
0	1	0	0	0	X	1	X	0	1	1	1	UNLOAD HEADS
0	1	0	1	0	X	X	1	1	0	0	0	SEEK FWD
0	1	0	0	0	X	0	X	1	0	0	0	LOCK ON NEG. SLOPE
0	1	0	1	0	X	X	0	1	0	0	1	SEEK REV
												LOCK ON POS. SLOPE

CZ-1046

