

digital

*Reference Flowcharts &
Block Diagrams*

RL 01

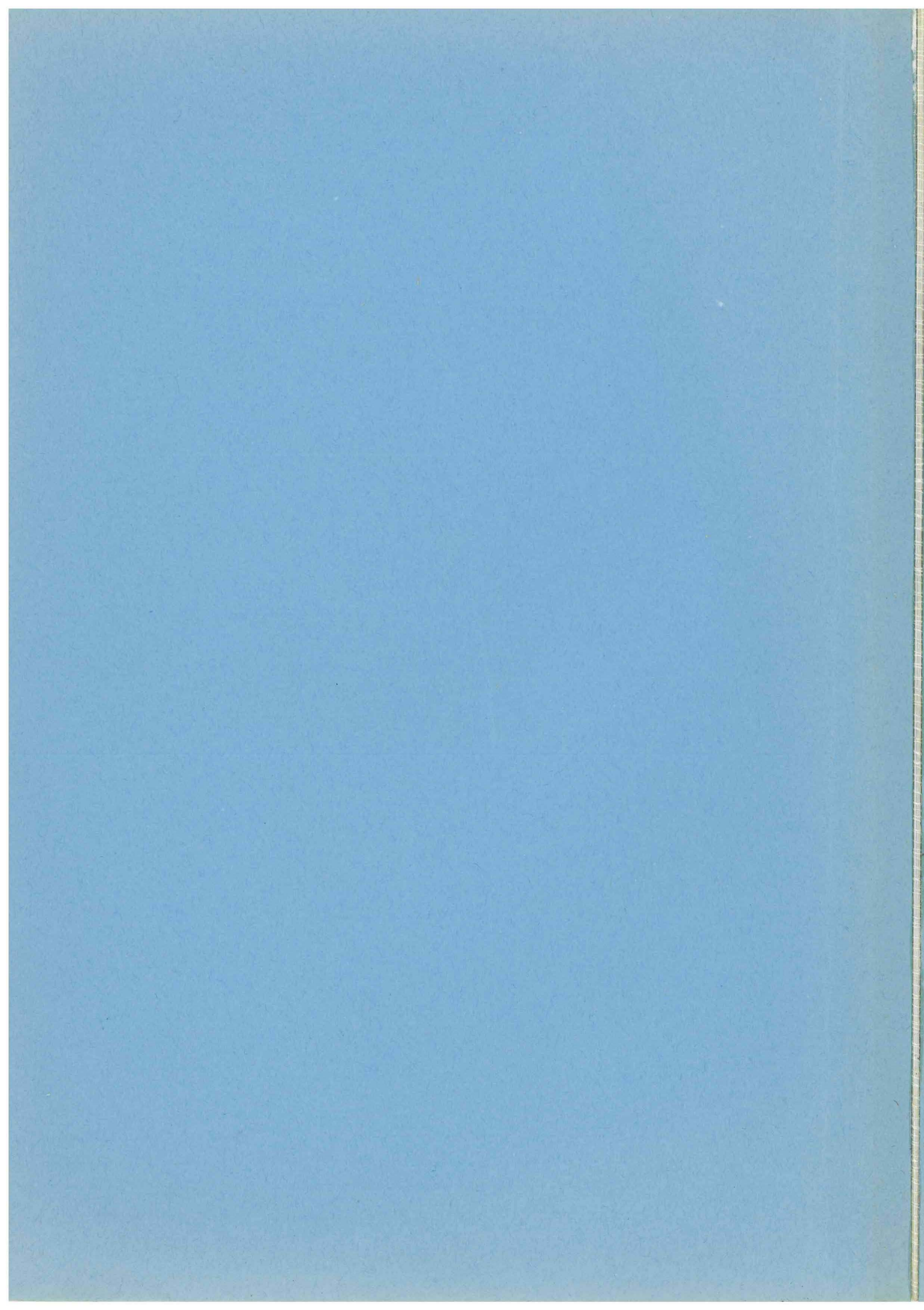
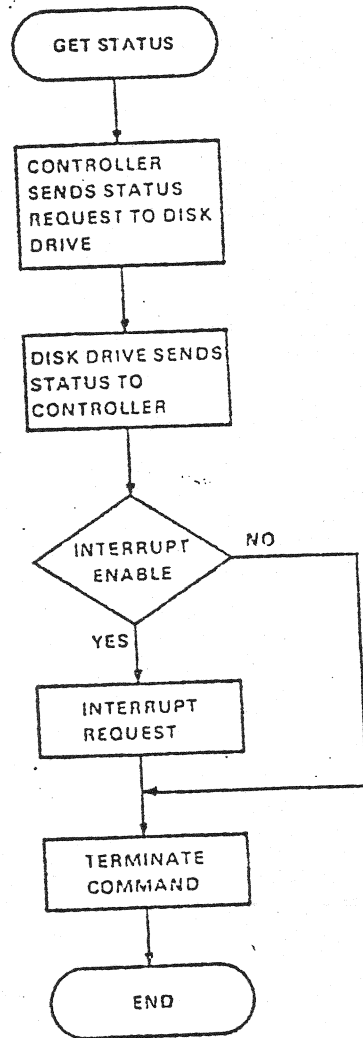
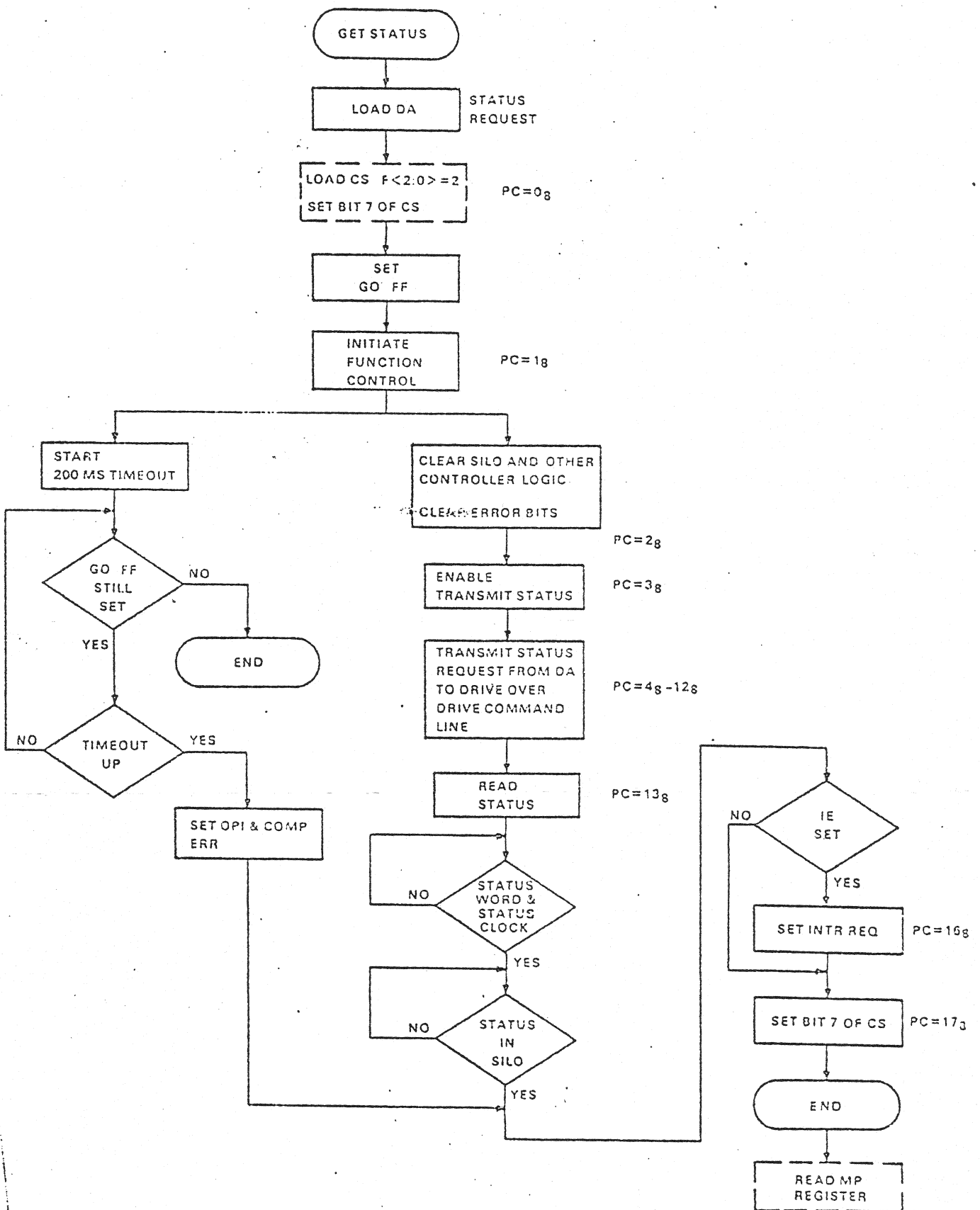


Figure 2-4 Get Status Command, Operational Sequence



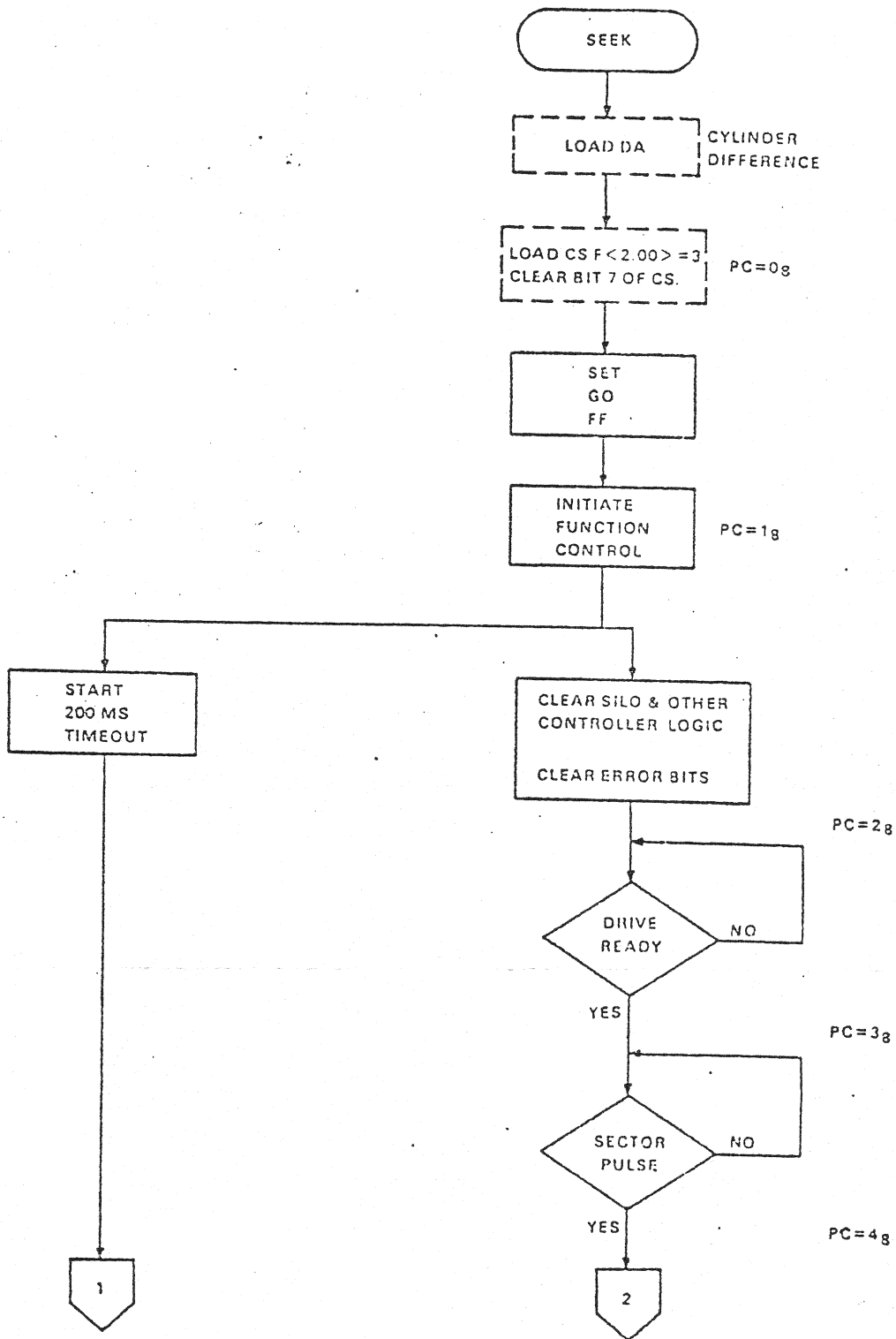
MA-0070

Figure 4-4 .t Status Command, Detailed Flow Chart



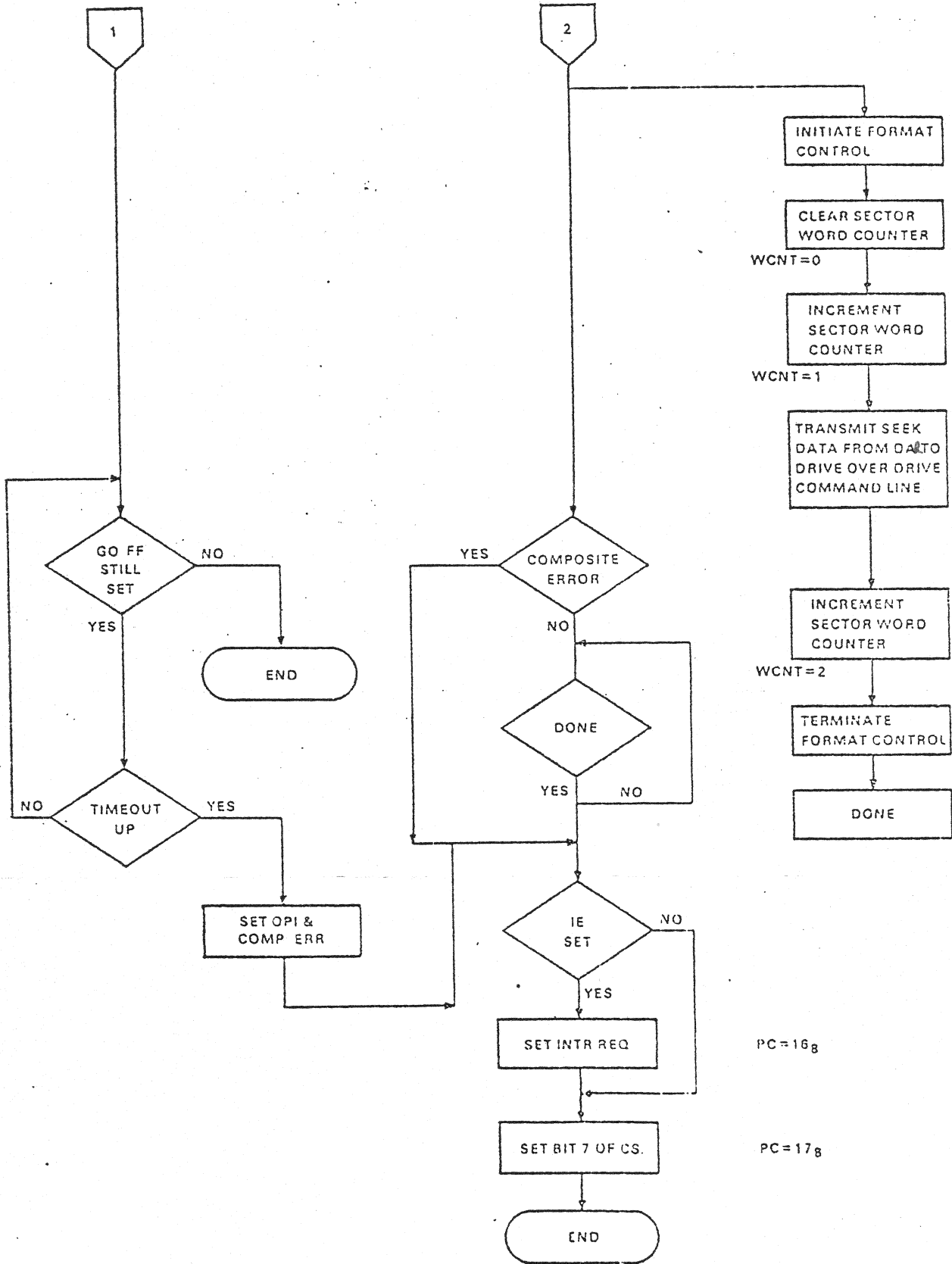
4-7A
4-8

Figure 4-5 Seek Command, Detailed Flow Chart



MA-0085

Figure 4-5 Seek Command, Detailed Flow Chart (Cont)



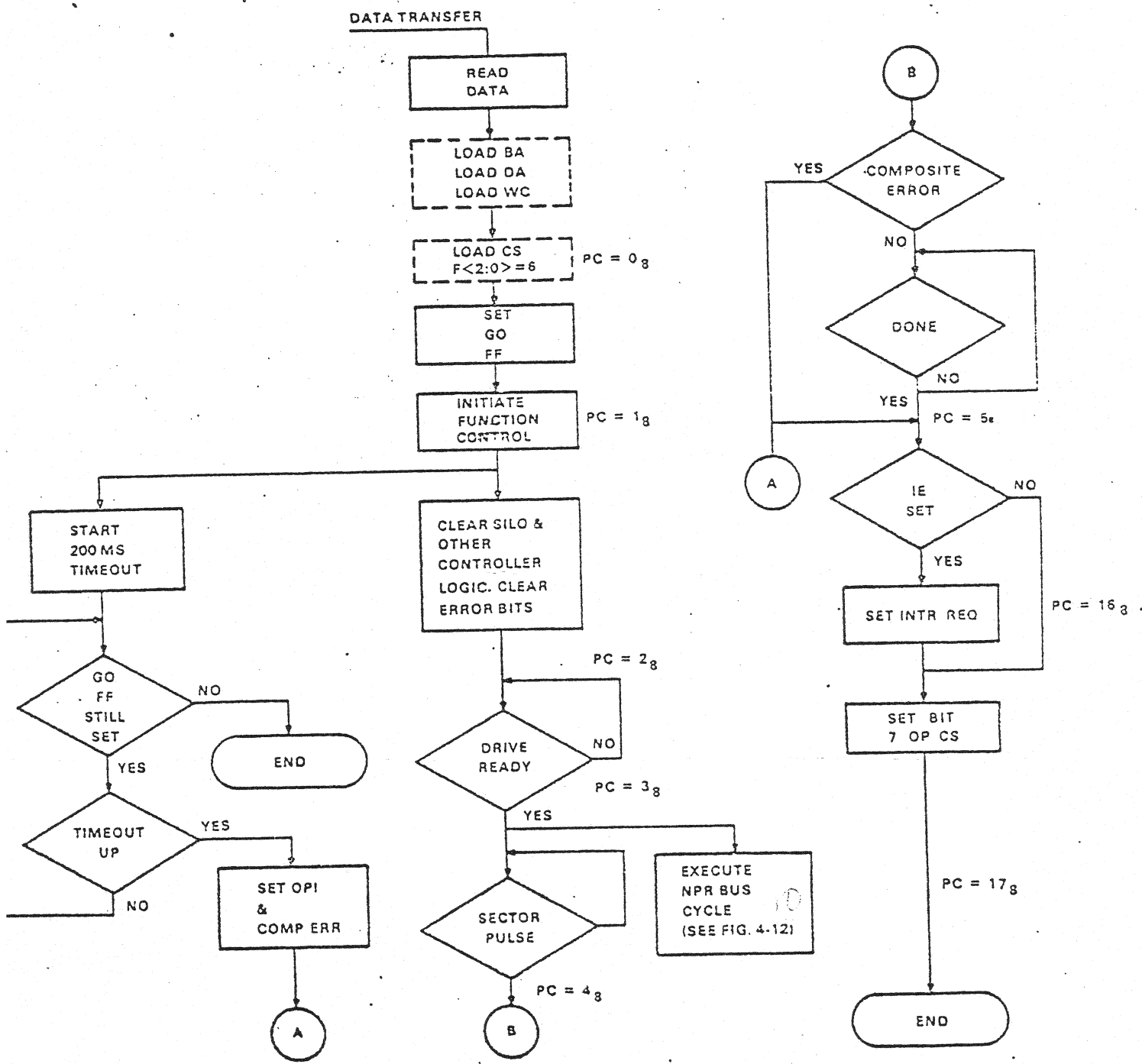
Picked up by main flow

PC=168

PC=178

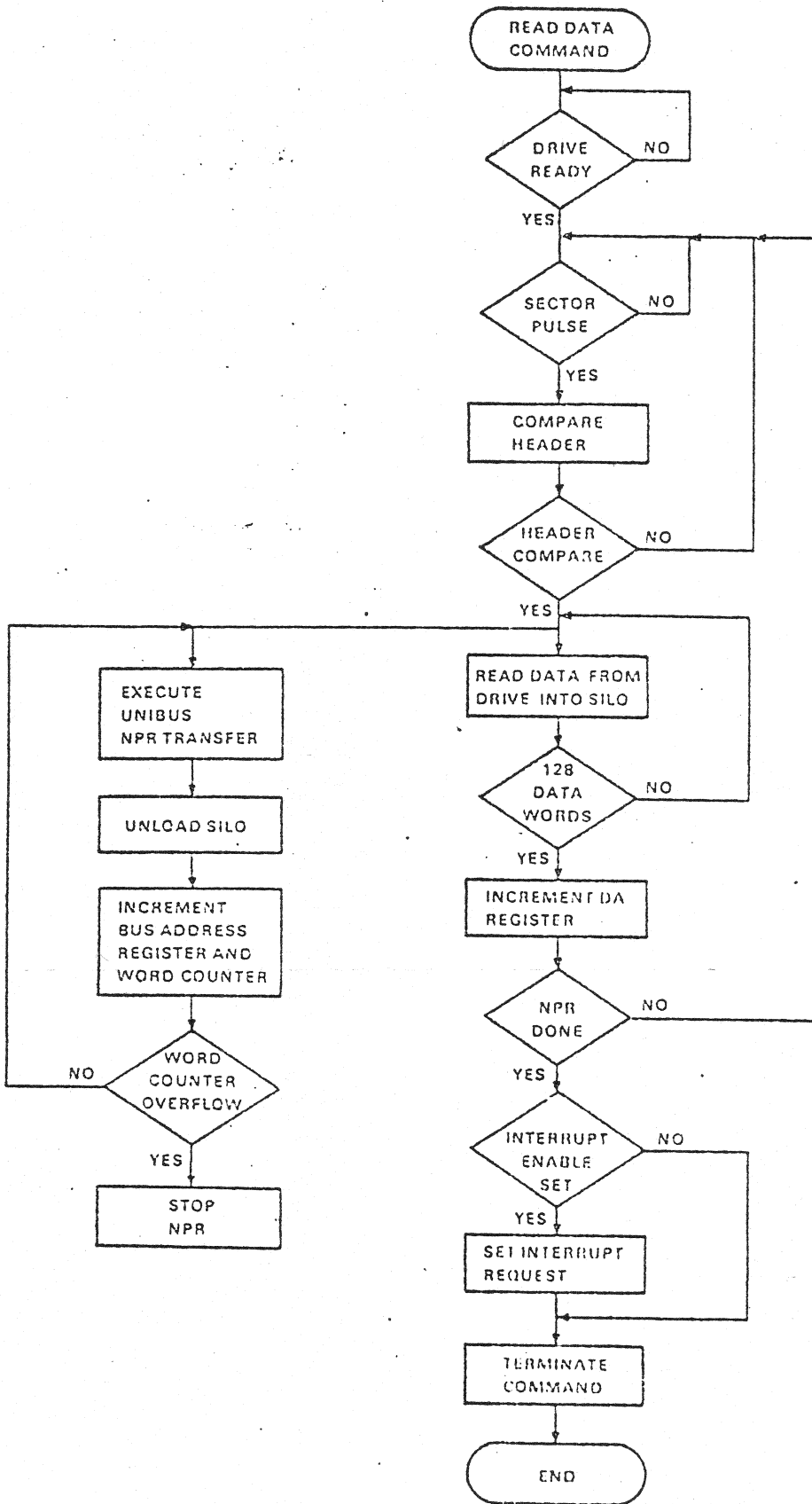
MA-0036

Figure 4-9 Read Data Command, Function Control, Detailed Flow Chart, (Sheet 1 of 2)



MA-0816

Figure 2-8 Read Data Command, Operational Sequence



MA-007A

Figure 4-10 Read Data Command, Format Control and NPR,
Detailed Flow Chart (Sheet 1 of 2)

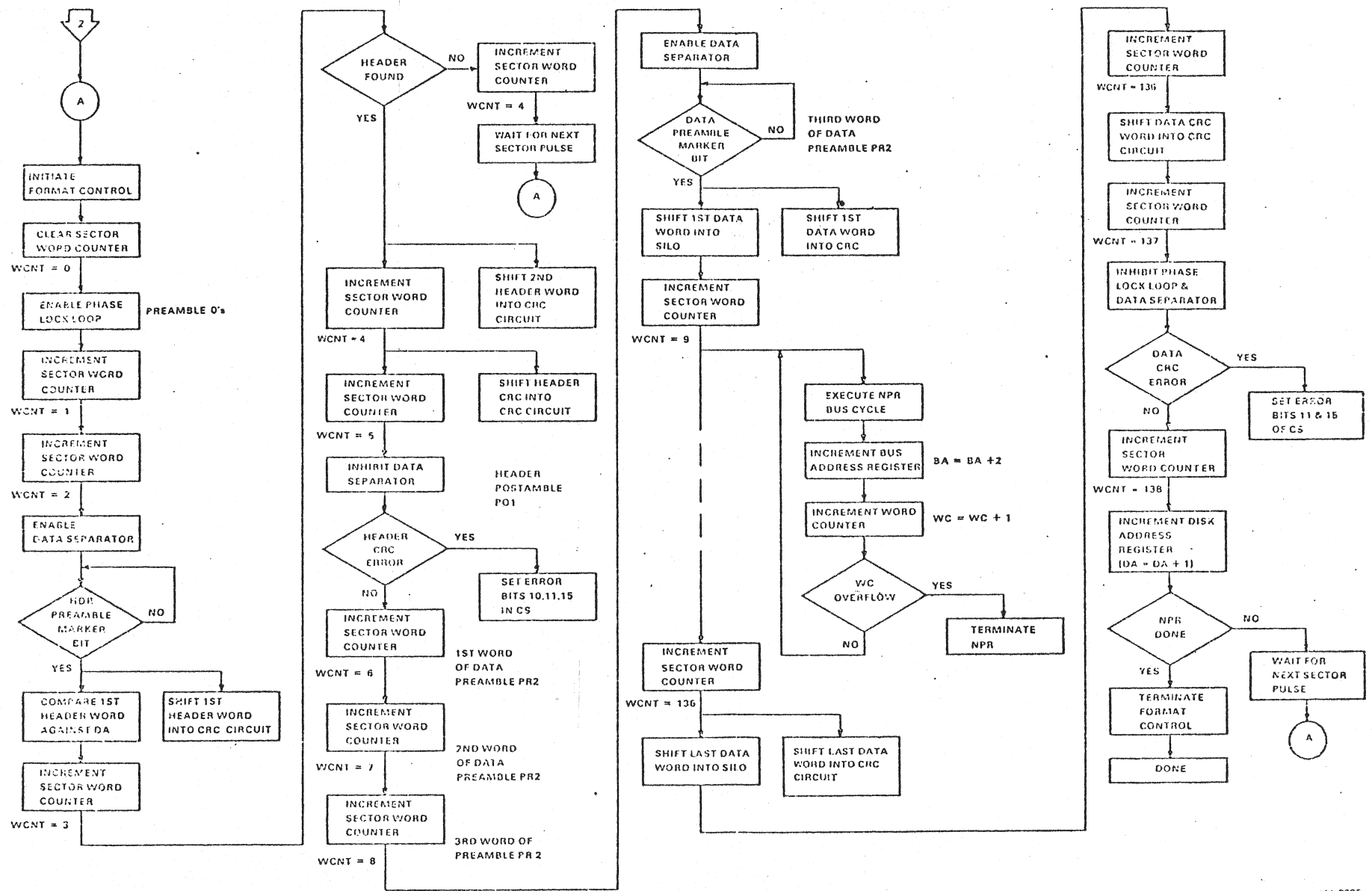
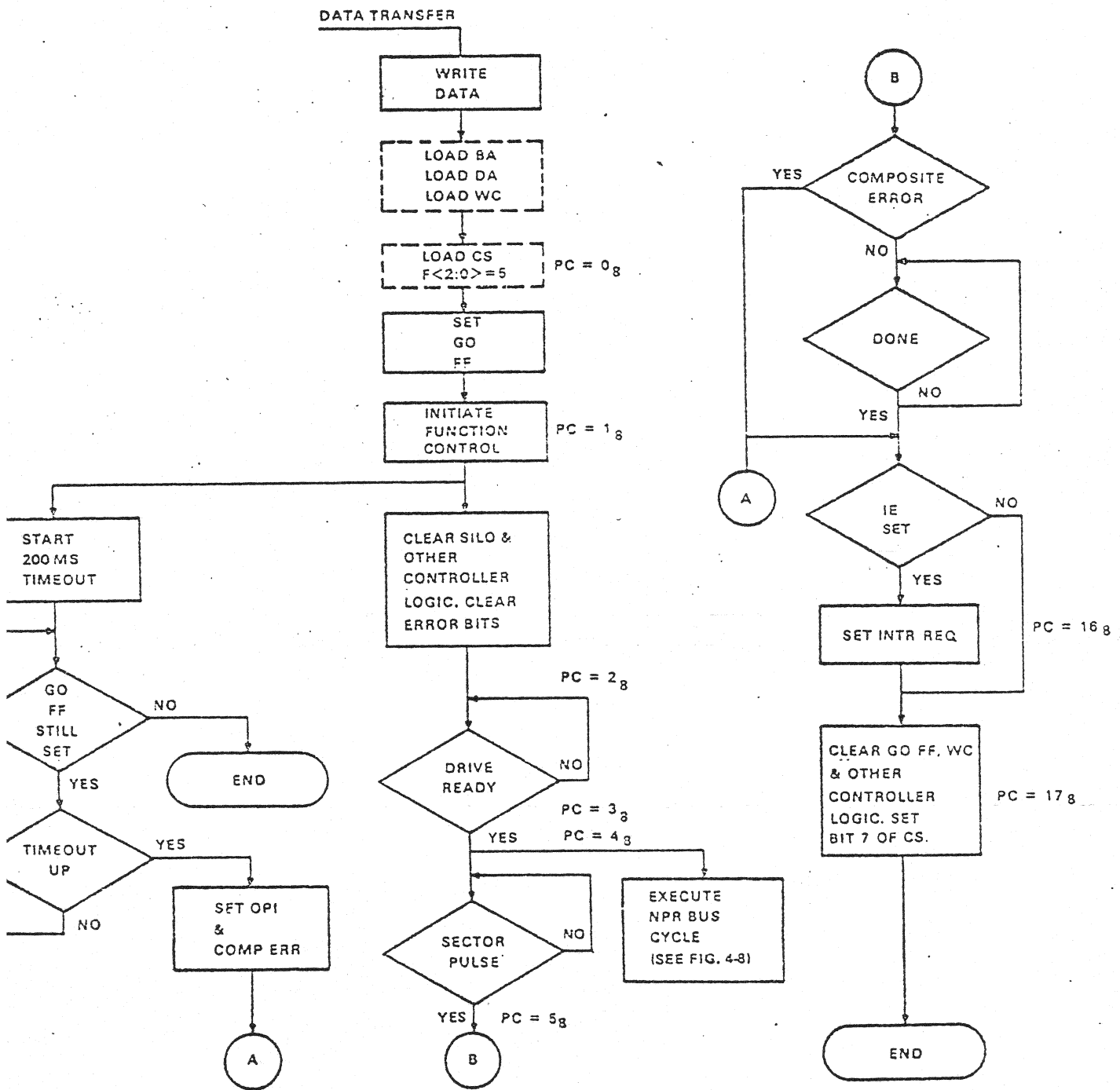


Figure 4-7 Write Data Command, Function Control, Detailed Flow Chart, (Sheet 1 of 2)



MA-0314

Figure 4-3 Write Data Command, Format Control and NPR, Detailed Flow Chart

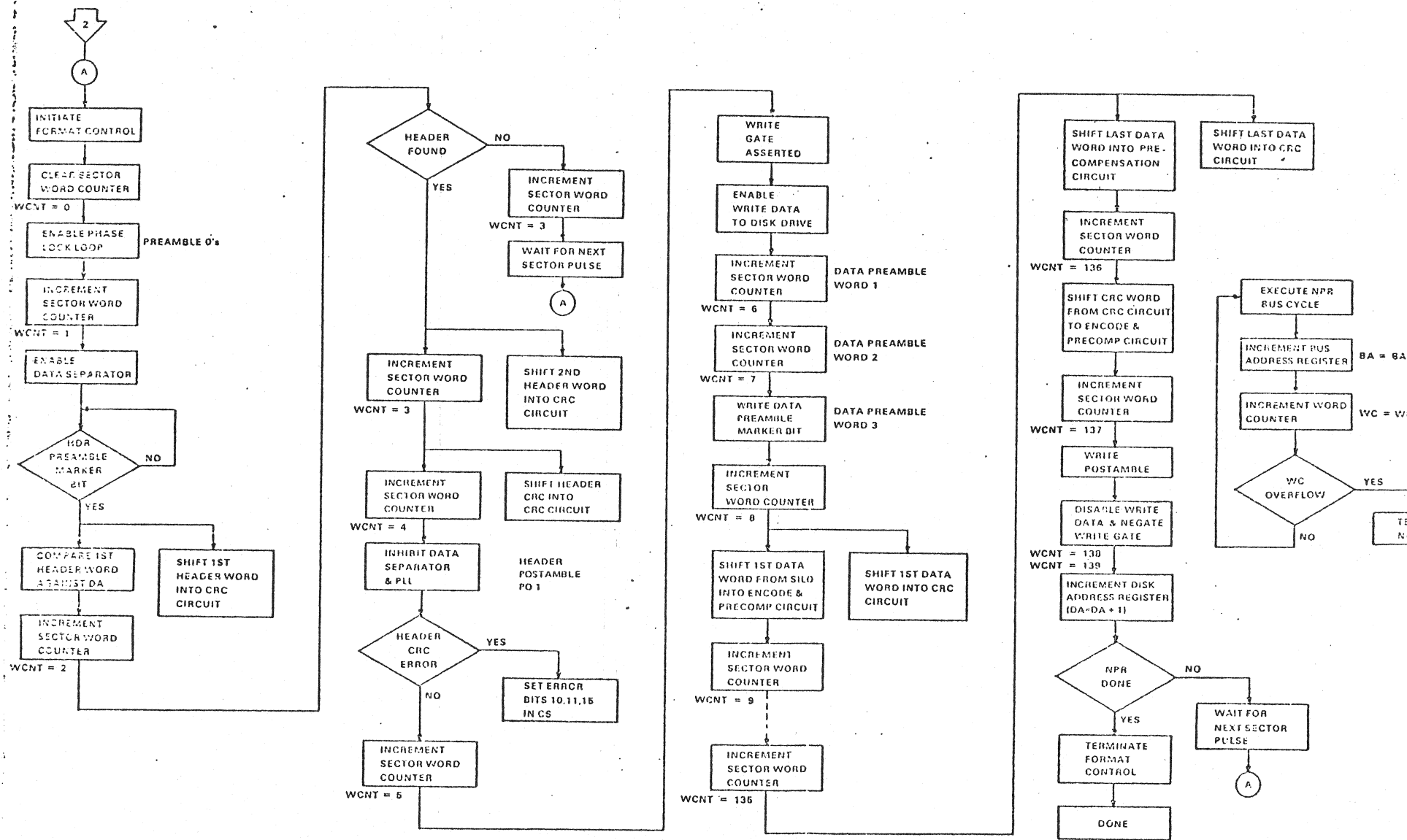


Figure 4-6 Read Header Command, Detailed Flow Chart

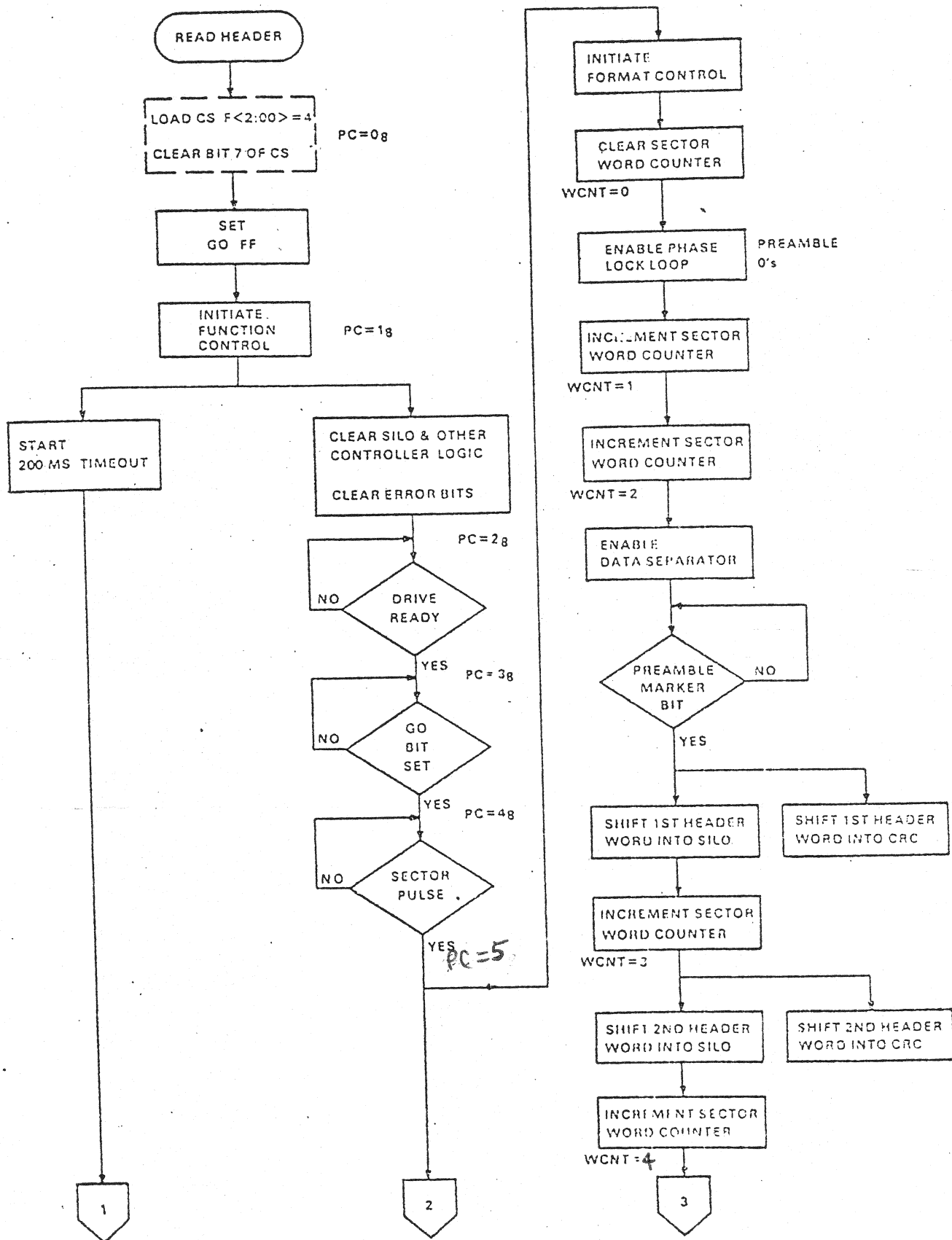


Figure 2-9 Read Data Without Header Check Command, Operational Sequence

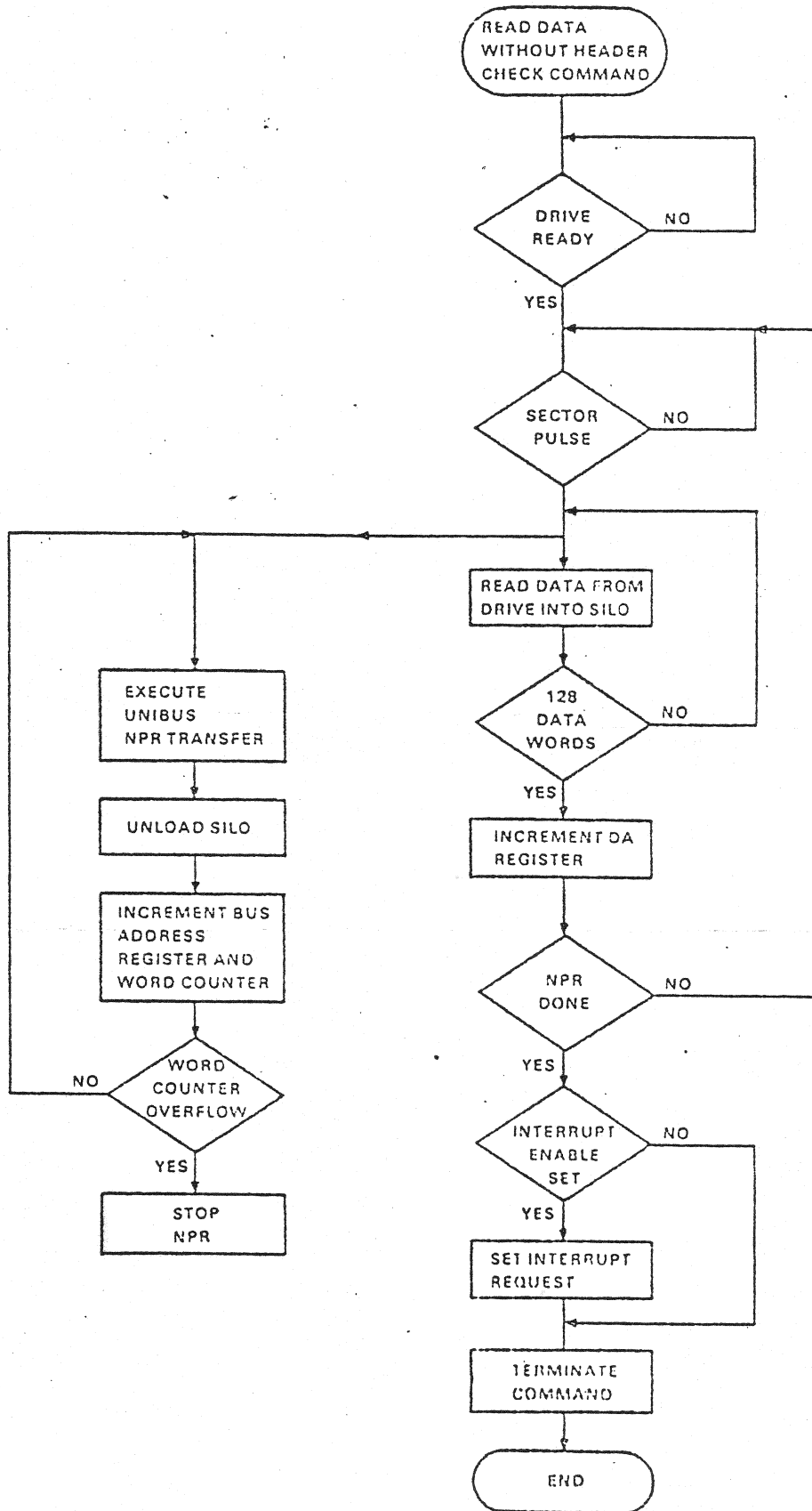


Figure 4-11 Read Data Without Header Check Command,
Detailed Flow Chart (1 of 2)

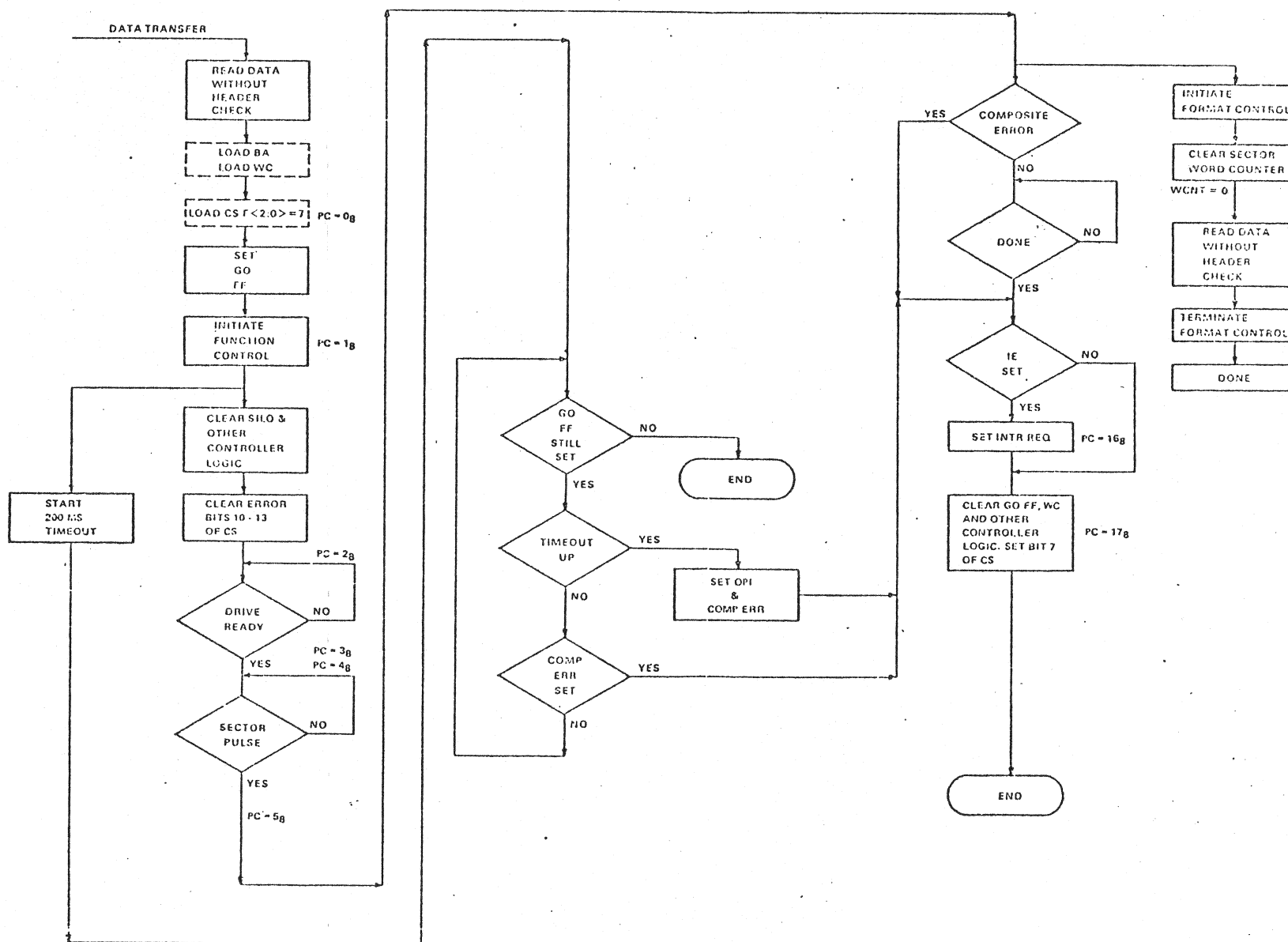
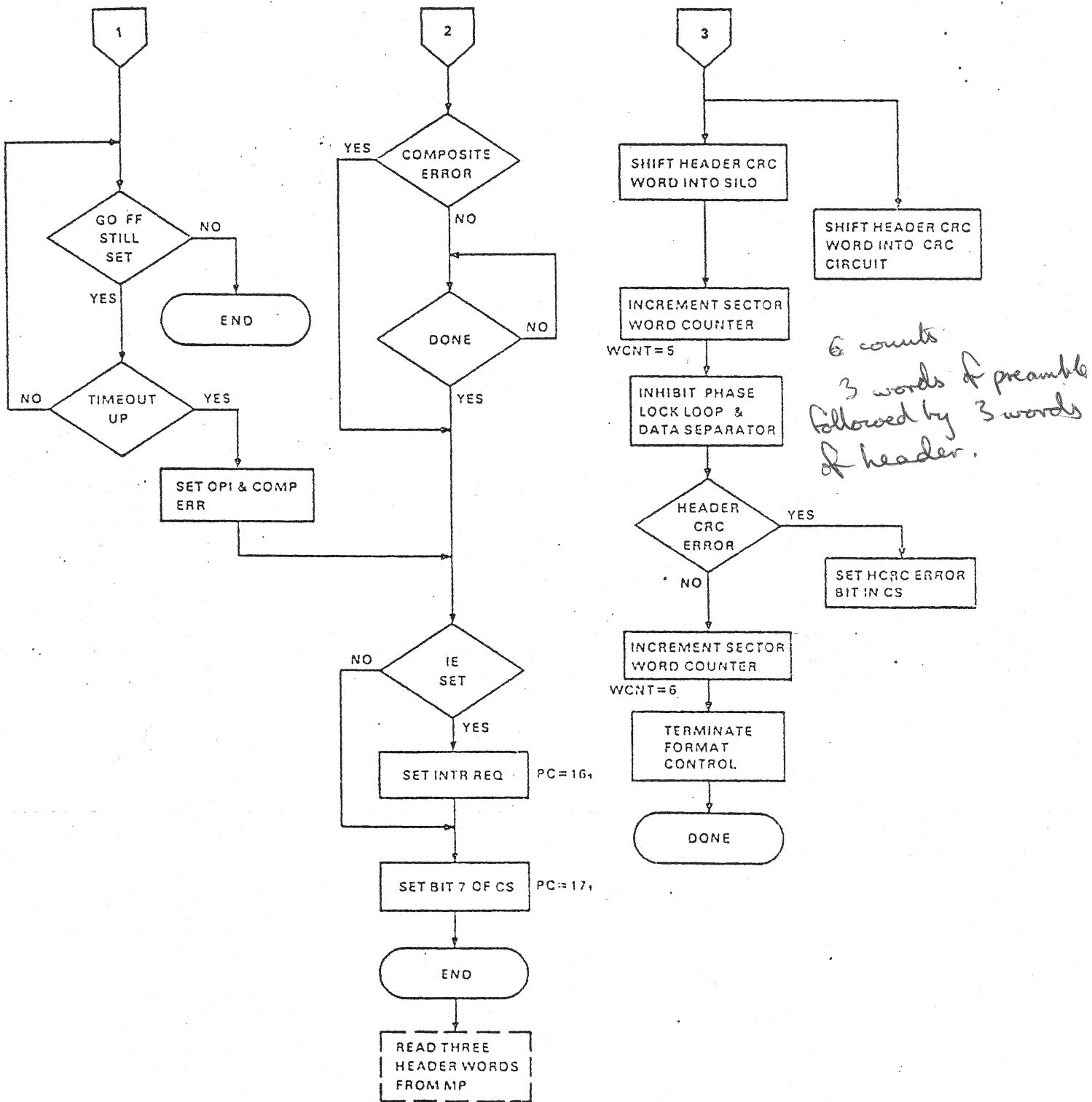
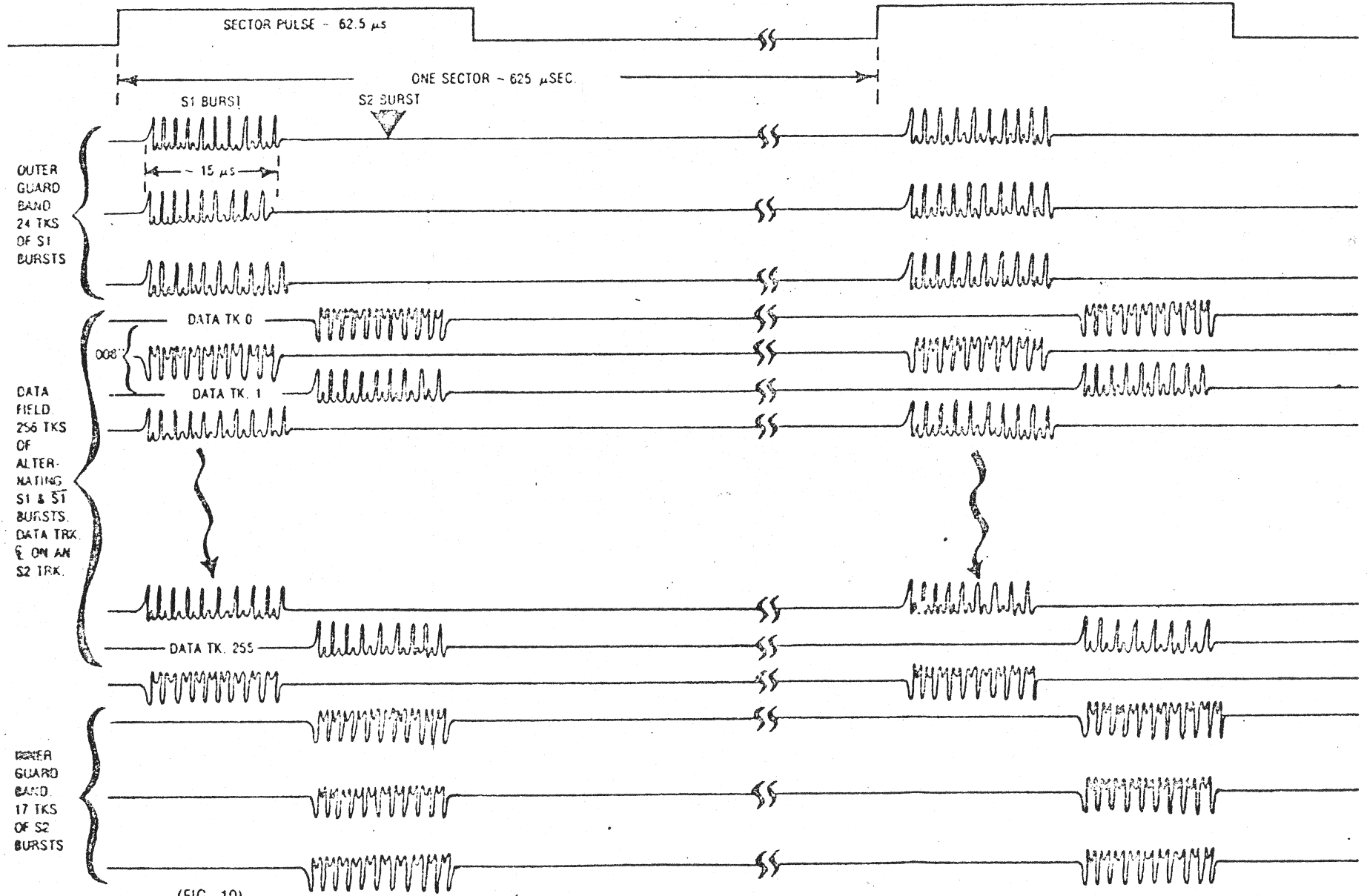


Figure 4-6 Read Header Command, Detailed Flow Chart (Cont)



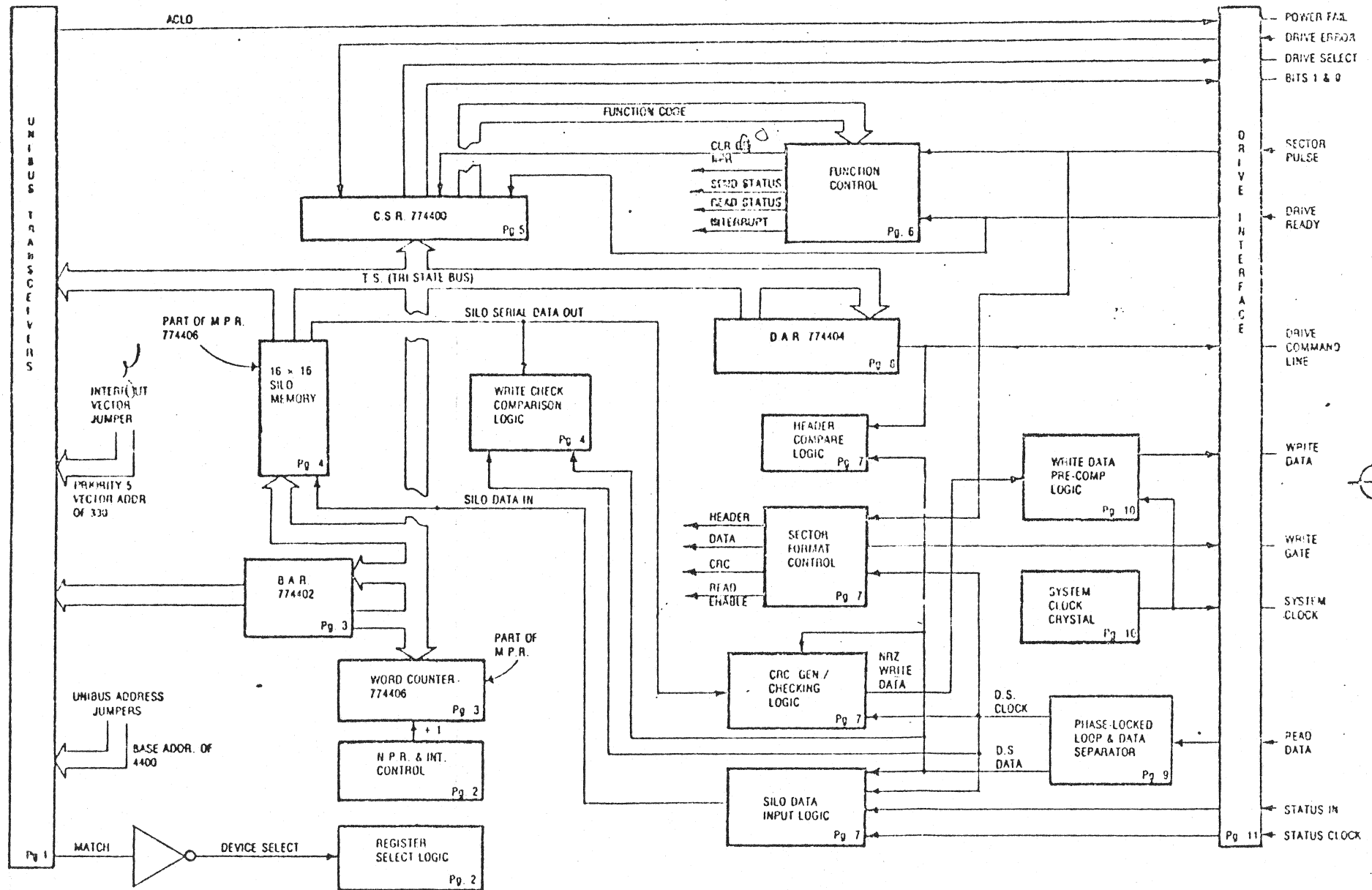
MA-0083

RL01 SERVO DATA FORMAT



(FIG. 10)

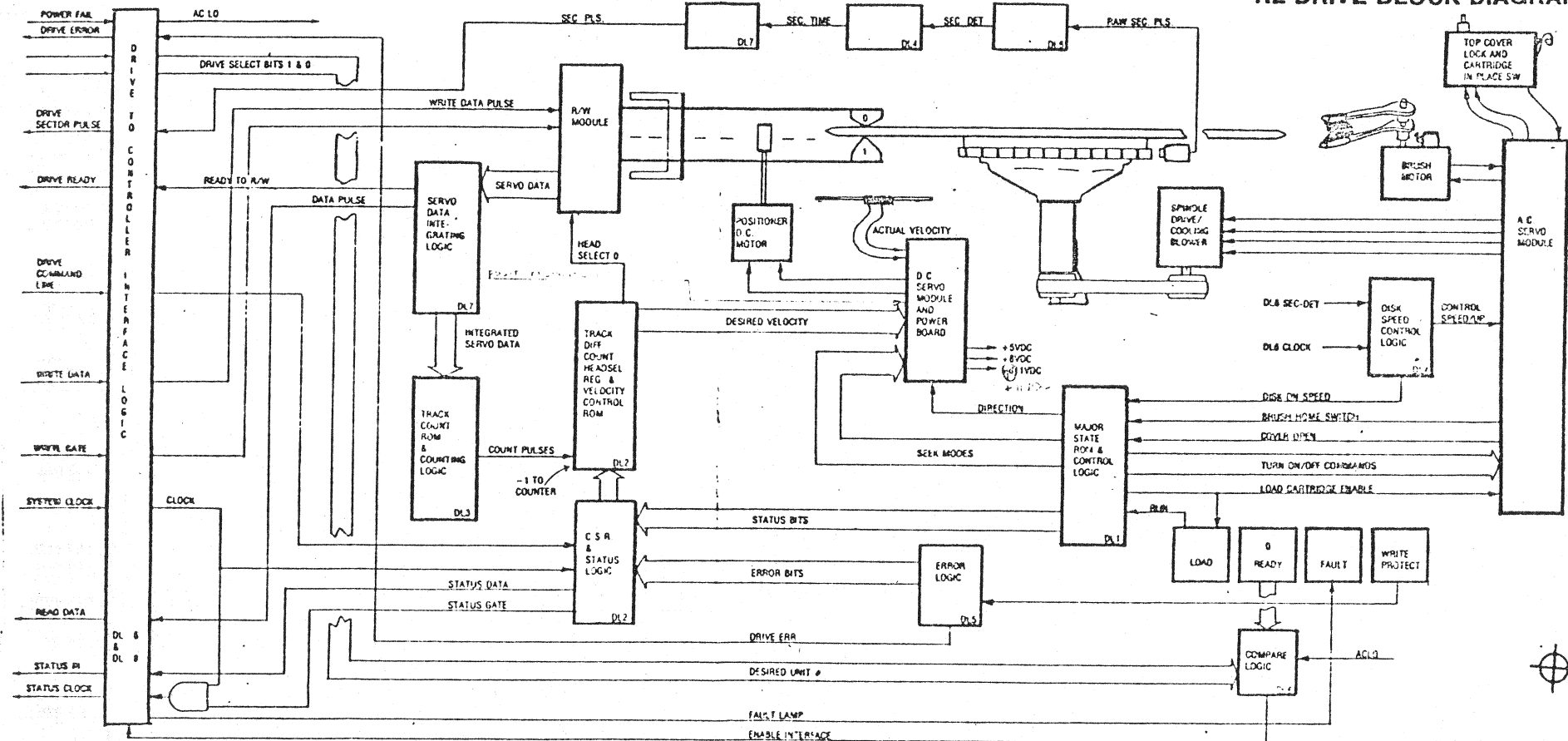
M7762 RLII BASIC BLOCK DIAGRAM



(FIG. 12)

Red color ref.

RL DRIVE BLOCK DIAGRAM



(FIG. 13)

