

REVISION

This package contains changes to your IPB.

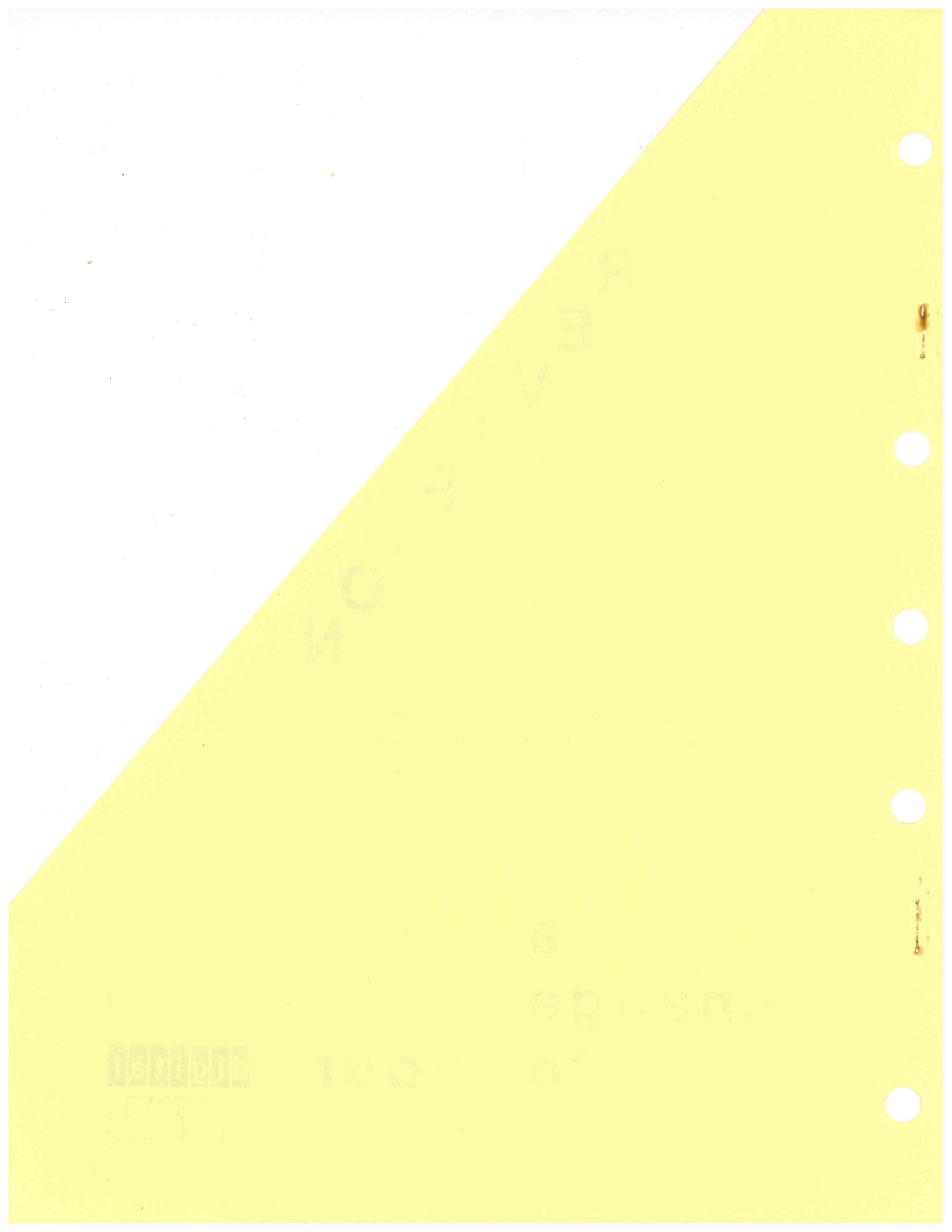
Update as follows:

- Discard the old Title Page and replace with the new one.
- Discard the affected pages and replace with the new page(s) (as noted on the new Title Page).
- Discard this page.

a
change
to your

digital
IPB





ILLUSTRATED PARTS BREAKDOWN

H740-D/DA POWER SUPPLY

HOW TO USE THE IPB

GENERAL

This IPB is compiled following the organization and nomenclature of the engineering drawing structure.

MAJOR ASSEMBLY LOCATOR

The Major Assembly Locator (first illustration) is an index that provides a description and a figure reference for all illustrations used in this manual.

INDENTED PARTS LIST

This manual identifies each assembly being broken down (figure reference callout), and all parts of that assembly. Further breakdown of an assembly is shown by an asterisk (*) preceding the item callouts in the Description Column. The number of asterisks preceding an item is used to denote the subordination of that item with respect to the Major Assembly. A single asterisk preceding an item description indicates that the item is part of the major assembly being illustrated. Items that are subordinate to single asterisks items, are denoted by two asterisks (**) and immediately follow the related single asterisk item. Additional asterisks are used, as required, to denote further subordination. This system of part identification, provides a means for the user to identify the next higher assembly item and make alternate selections for parts when the required replacement part or assembly is not immediately available.

COLUMN CALLOUT DESCRIPTION

Figure & Item — Indicates the figure number and item number of each part.

Description — Lists the name of the part and pertinent specifications (when required). Asterisks preceding the description denote the subordination of the part to the next higher assembly.

DEC Part No. — Lists the DEC part ordering number. A blank in this column indicates a DEC part number was not assigned at the time of publication.

ECO Cut-In — The notation at the top of this column indicates the ECO level of the system (option), at which the IPB was initially prepared. Subsequent ECO level designations, that modify existing parts or add new parts to the device, are inserted in the ECO Cut-In column next to the part that is added or modified. A bracket ([]) preceding the item description is used to indicate the parts affected by ECO's.

Vendor Code/Part No. — Indicates vendor parts that are not stocked by DEC. Refer to the Field Service Spares Catalog (vendor part number to DEC part number) for the vendor code cross-reference.

Used On Code — Letters in this column correspond to the variation codes assigned in Figure 1. Parts with an Alpha notation(s) are used only in those option variations. A blank indicates that the part is used on all option variations.

Ref Fig No. — A cross reference between illustrations. For each Major Assembly, the number in this column denotes the figure of the next higher assembly. For all subassemblies, the number in this column denotes the figure showing additional detailed breakdown.

SYMBOL USAGE

Hardware Designators — Alpha designators for screws (S), washers (W), nuts (N), and retaining rings (R) are inserted after the item number callouts on the illustration when stacked item numbers are used.

Attaching Hardware — The @ symbol is inserted before any part that is used as attaching hardware. Attaching hardware is denoted as those parts that are not an integral part of the referenced assembly.

(NFR) Not Field Repairable — The (NFR) symbol is inserted after any assembly that is not to be field dismantled.

Other Symbols — Any other symbols that are required for kits, accessories, etc., will be explained and appear as part of the item description.

REVISION HISTORY

PRINTING	ECO LEVEL	DATE	PAGES AFFECTED
1st Printing	H740D 00010-00010 BC05H 00000-00004 BC05J 00000-00004 H400 00000-00008 70-08811 00001-00001 70-08810 00001-00001	3-3-75	N/A
2nd Printing	H740D 00010-00011 BC05H 00000-00004 BC05J 00000-00004 H400 00000-00008 70-08811 00001-00001 70-08810 00001-00001	7-25-75	This 2nd Printing EK-H740D-IP-002 SUPERSEDES 1st Printing EK-H740D-IP-001

Copyright ©1975, by Digital Equipment Corporation

DEC reserves the right, without notice, to make substitutions and modifications in the specifications of products documented in this manual and further reserves the right to withdraw any of these products from the market without notice.

DEC is not responsible for errors which may appear in the technical description (including illustrations and photographs) of the products covered by this manual.

None of the descriptions contained in this manual imply the granting of any license whatsoever to make, use or sell equipment constructed in accordance therewith.

ANNOUNCEMENT

FOR THE PEOPLE

STATEMENT
OF
WORK

INTRODUCTION

The purpose of this document is to provide a clear and concise overview of the project's objectives, scope, and timeline. It is intended for all stakeholders involved in the project, including team members, management, and external partners. This document will serve as a reference point throughout the project's duration.

The project is designed to address the current challenges faced by the organization and to implement a strategic plan that will drive growth and innovation. The primary goal is to enhance operational efficiency and improve customer satisfaction. This document outlines the key milestones and deliverables that will be achieved over the course of the project.

The project team consists of highly skilled professionals from various departments, including marketing, sales, and operations. Each team member has been assigned specific responsibilities to ensure the successful completion of the project. Regular communication and collaboration are essential for the project's success. This document provides a framework for the project's execution and a timeline for the key milestones.

The project is divided into several phases, each with its own set of tasks and objectives. The initial phase focuses on research and analysis, while the subsequent phases involve implementation and evaluation. The project team will monitor progress closely and make adjustments as needed to ensure that the project remains on track. This document provides a detailed overview of the project's structure and the roles of the various team members.

The project's success is dependent on the active participation and support of all stakeholders. It is important to maintain open lines of communication and to address any concerns or questions promptly. This document provides a clear overview of the project's goals and objectives, and it serves as a guide for the project's execution. The project team is committed to delivering high-quality results and to ensuring that the project is completed on time and within budget.

The project team will provide regular updates on the project's progress and will hold regular meetings to discuss any issues that arise. This document provides a clear overview of the project's goals and objectives, and it serves as a guide for the project's execution. The project team is committed to delivering high-quality results and to ensuring that the project is completed on time and within budget.

The project's success is dependent on the active participation and support of all stakeholders. It is important to maintain open lines of communication and to address any concerns or questions promptly. This document provides a clear overview of the project's goals and objectives, and it serves as a guide for the project's execution. The project team is committed to delivering high-quality results and to ensuring that the project is completed on time and within budget.

The project team will provide regular updates on the project's progress and will hold regular meetings to discuss any issues that arise. This document provides a clear overview of the project's goals and objectives, and it serves as a guide for the project's execution. The project team is committed to delivering high-quality results and to ensuring that the project is completed on time and within budget.

The project's success is dependent on the active participation and support of all stakeholders. It is important to maintain open lines of communication and to address any concerns or questions promptly. This document provides a clear overview of the project's goals and objectives, and it serves as a guide for the project's execution. The project team is committed to delivering high-quality results and to ensuring that the project is completed on time and within budget.

The project team will provide regular updates on the project's progress and will hold regular meetings to discuss any issues that arise. This document provides a clear overview of the project's goals and objectives, and it serves as a guide for the project's execution. The project team is committed to delivering high-quality results and to ensuring that the project is completed on time and within budget.

The project's success is dependent on the active participation and support of all stakeholders. It is important to maintain open lines of communication and to address any concerns or questions promptly. This document provides a clear overview of the project's goals and objectives, and it serves as a guide for the project's execution. The project team is committed to delivering high-quality results and to ensuring that the project is completed on time and within budget.

The project team will provide regular updates on the project's progress and will hold regular meetings to discuss any issues that arise. This document provides a clear overview of the project's goals and objectives, and it serves as a guide for the project's execution. The project team is committed to delivering high-quality results and to ensuring that the project is completed on time and within budget.

The project's success is dependent on the active participation and support of all stakeholders. It is important to maintain open lines of communication and to address any concerns or questions promptly. This document provides a clear overview of the project's goals and objectives, and it serves as a guide for the project's execution. The project team is committed to delivering high-quality results and to ensuring that the project is completed on time and within budget.

The project team will provide regular updates on the project's progress and will hold regular meetings to discuss any issues that arise. This document provides a clear overview of the project's goals and objectives, and it serves as a guide for the project's execution. The project team is committed to delivering high-quality results and to ensuring that the project is completed on time and within budget.

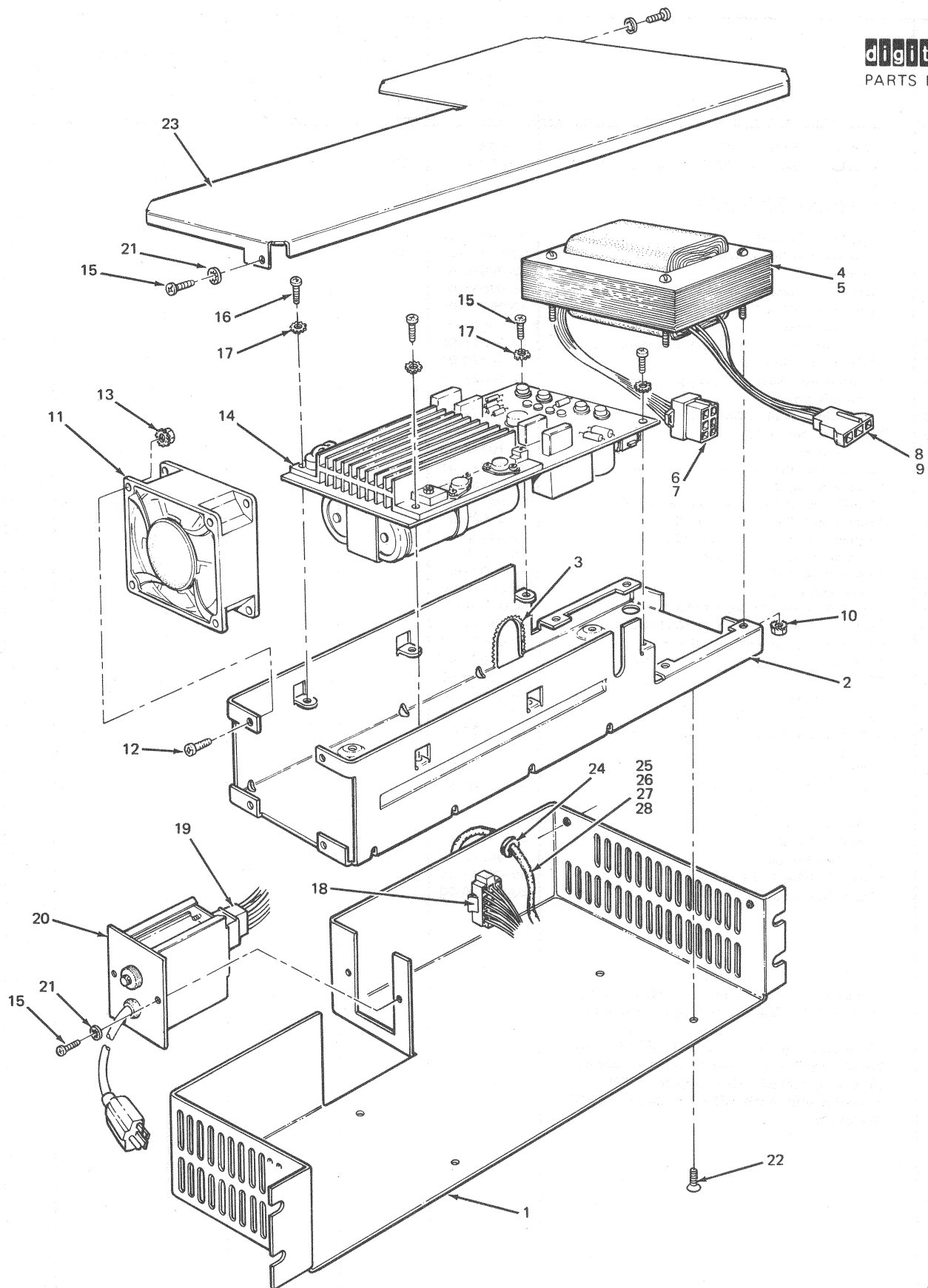
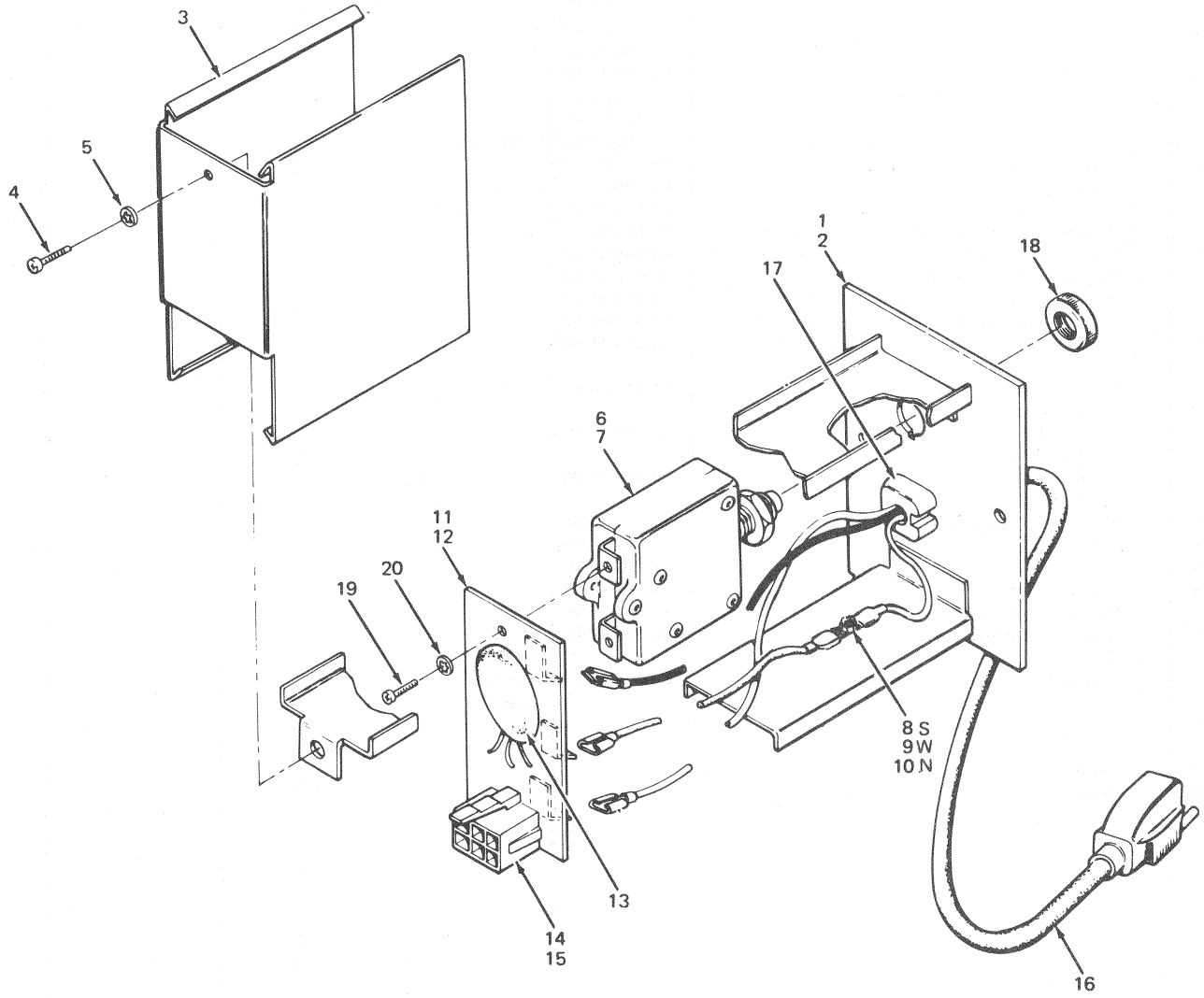


Figure 1. H740D Power Supply Assembly

H740D-01

FIG & ITEM NO.	DESCRIPTION	DEC PART NO.	ECO CUT-IN H740D 00010	USED ON CODE	VENDOR		REF FIG NO.
					CODE	PART NO.	
1-	H740-D POWER SUPPLY H740-DA POWER SUPPLY (Used with TU16) (Added) <u>See Note Before Ordering</u>	H740-D H740-DA	00011	A B			
1	*Chassis (H740-D)	53-09975-00		A			
	*Chassis (H740-DA) (Added)	53-09975-01	00011	B			
2	*Chassis	53-09816-00					
3	*Grommet, Caterpillar	90-07035-00					
4	*TRANSFORMER ASSEMBLY	70-08726-00					
5	**Transformer	16-10601-01					
6	**Connector, Pin Housing, 6 Pin Mate-N-Lok	12-09351-06					
7	**Terminal, Pin Contact	12-09378-01					
8	**Connector, Socket Housing, 3 Socket Mate-N-Lok	12-10821-03					
9	**Terminal, Socket Contact	12-09379-01					
10	*Nut, Kep No. 8-32	90-06563-00					
11	*Fan, Boxer	12-10719-00					
12	*Screw, Phl. Pan Hd. No. 6-32 x 3/8	90-06022-01					
13	*Nut, Kep No. 6-32	90-06560-00					
14	*REGULATOR BOARD ASSEMBLY	54-09728-00					
15	*Screw, Phl. Pan Hd. No. 6-32 x 1/4	90-06020-01					
16	*Screw, Phl. Pan Hd. No. 6-32 x 7/16	90-06023-01					
17	*Washer, Ext. Tooth No. 6	90-07649-00					
18	*HARNESS, DC	70-08811-00					3
19	*HARNESS, AC	70-08810-00					4
20	†LINE SET ASSEMBLY (115V) (See Note)	BC05H-06					2
	†LINE SET ASSEMBLY (230V) (See Note)	BC05J-06					2
21	*Washer, Int. Tooth Lock No. 6	90-06633-00					
22	*Screw, Phl. Flat Hd. No. 8-32 x 3/8	90-06037-02					
23	*Cover	53-09976-00					
24	*Strain Relief	90-08492-00		B			
25	*FAN CABLE ASSEMBLY	70-11216-00		B			
26	**Connector, Socket Housing, 2 Socket Mate-N-Lok	12-10821-02		B			
27	**Terminal, Socket Contact	12-09379-01		B			
28	**Cable, (2 Cond. 20 AWG)	91-07701-00		B			
	DECALS						
	*Decal (H740D)	53-09998-00		A			
	*Decal (H740-DA)	53-09349-00		B			
	*Decal (NFPA TYPE II)	53-09413-00					
	*Decal (UL Logo)	53-09414-00					
	<p style="text-align: center;">NOTE</p> <p>The Line Set Assemblies (Item 20) are not part of the H740D/DA Power Supply Assembly.</p> <p>When ordering the H740D or H740DA Power Supply, the line set must be ordered separately. Line set model BC05H is used for 115V operation and model BC05J is used for 230V operation.</p>						

See IPB Manual EK-09728-IP

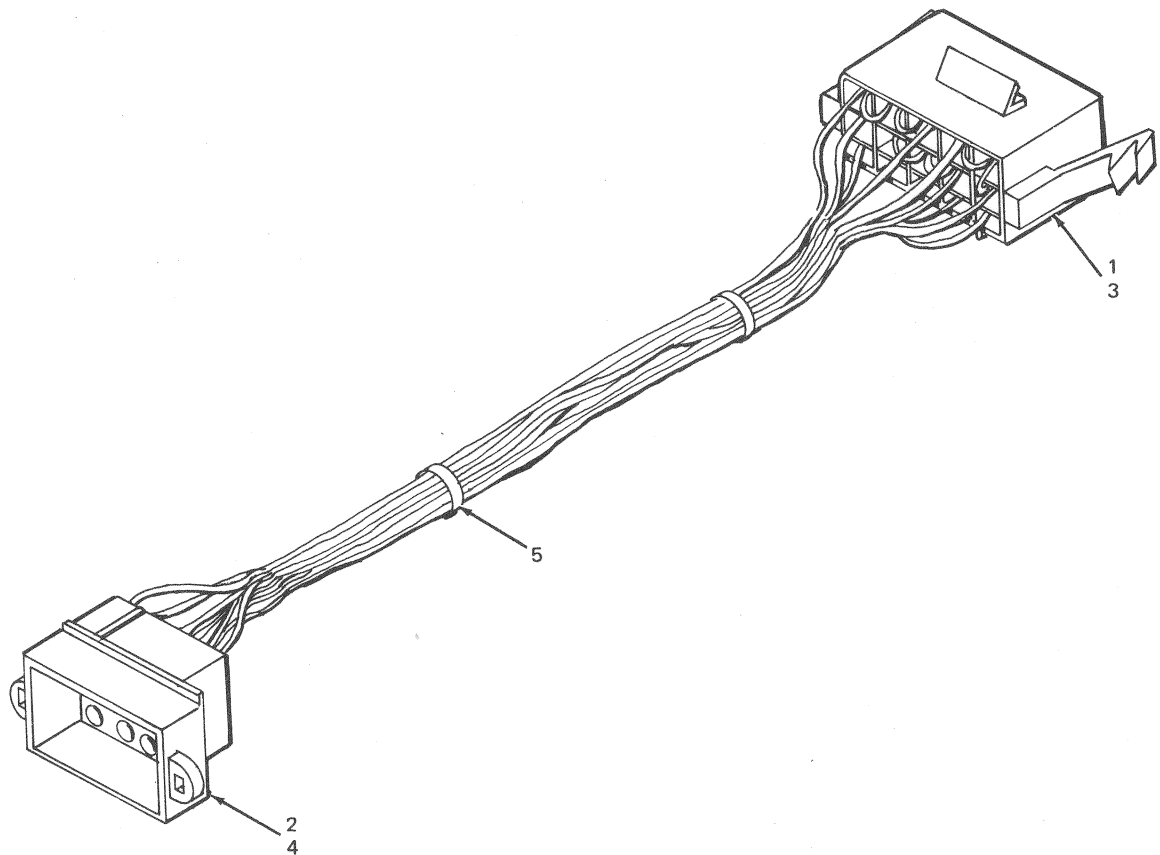


TU60-07

Figure 2. Line Set Assembly

FIG & ITEM NO.	DESCRIPTION	DEC PART NO.	ECO CUT-IN BC05H/J 00000 H400 00000	USED ON CODE	VENDOR		REF FIG NO.
					CODE	PART NO.	
2-	LINE SET ASSEMBLY (115V) LINE SET ASSEMBLY (230V)	BC05H-00 BC05J-00		A B			1
1	*AC INPUT BOX ASSEMBLY (115V)	H400-A		A			
	*AC INPUT BOX ASSEMBLY (230V)	H400-B		B			
2	**Box	53-09845-00					
3	**Cover	53-09849-00					
4	**Screw, Phi Hd Pan No. 6-32 x 1/4	90-06020-01					
5	**Washer, Int Tooth Lock No. 6	90-06633-00					
6	**Circuit Breaker, 7 Amp	12-10830-07		A			
7	**Circuit Breaker, 5 Amp (deleted)	12-10830-05		B			
	**Circuit Breaker, 4 Amp (added)	12-10830-04	H400-00002				
8	**Screw, Phi Hd Pan No. 4-40 x 1/4 (deleted)	90-08301-01					
	**Screw, Phi Hd Pan No. 4-40 x 3/8 (added)	90-06011-01	H400-00004				
	**Screw, Phi Hd Pan No. 4-40 x 3/8 (deleted)	90-06011-01					
	**Screw, Phi Hd Pan No. 6-32 x 3/8 (added)	90-06022-01	H400-00008				
9	**Washer, Int Tooth Lock No. 4 (deleted)	90-06632-00					
	**Washer, Int Tooth Lock No. 6 (added)	90-06633-00					
10	**Nut, Kep Hex Hd No. 4-40 (deleted)	90-06557-00					
	**Nut, Kep Hex Hd No. 6-32 (added)	90-08185-00					
11	**Power Control Board Assembly 115V (Etch Rev A)	54-09824-00		A			
	**Power Control Board Assembly 230V (Etch Rev A)	54-09825-00		B			
12	***Board, Etched Circuit 115V (Etch Rev A)	50-09821-00		A			
	***Board, Etched Circuit, 230V (Etch Rev A)	50-09822-00		B			
13	***Capacitor (C1) Input .02 MFD	10-10767-00					
14	***Mate-N-Lok, 6 pin	12-09350-06					
15	***Socket, P.C.	12-09456-00					
16	*Power Cord (120V)	17-00015-06		A			
	*Power Cord (240V)	17-00016-06		B			
17	*Strain Relief (deleted)	90-07142-00	BC05H-00002				
	*Strain Relief (added)	90-08492-02	H400-00002				
18	†Nut, Knurl, No. 7/16-28 (part of items 6 & 7)						
19	†Screw, No. 6-32 (part of items 6 and 7)						
20	†Washer, Lock No. 6 (part of items 6 and 7)						

FIG & ITEM NO.	DESCRIPTION	DEC PART NO.	ECO CUT-IN 70-08811 00001	USED ON CODE	VENDOR		REF FIG NO.
					CODE	PART NO.	
3-	D.C. HARNESS ASSEMBLY	70-08811-00					1
1	*Connector (J2) Socket Housing, 15 Pin Mate-N-Lok	12-09350-15					
2	*Connector (J1) Pin Housing, 9 Pin Mate-N-Lok	12-09351-09					
3	*Terminal, (J2) Socket Contact	12-09379-01					
4	*Terminal, (J1) Pin Contact	12-09378-01					
5	*Tie Wrap	90-07031-00					



11-1974

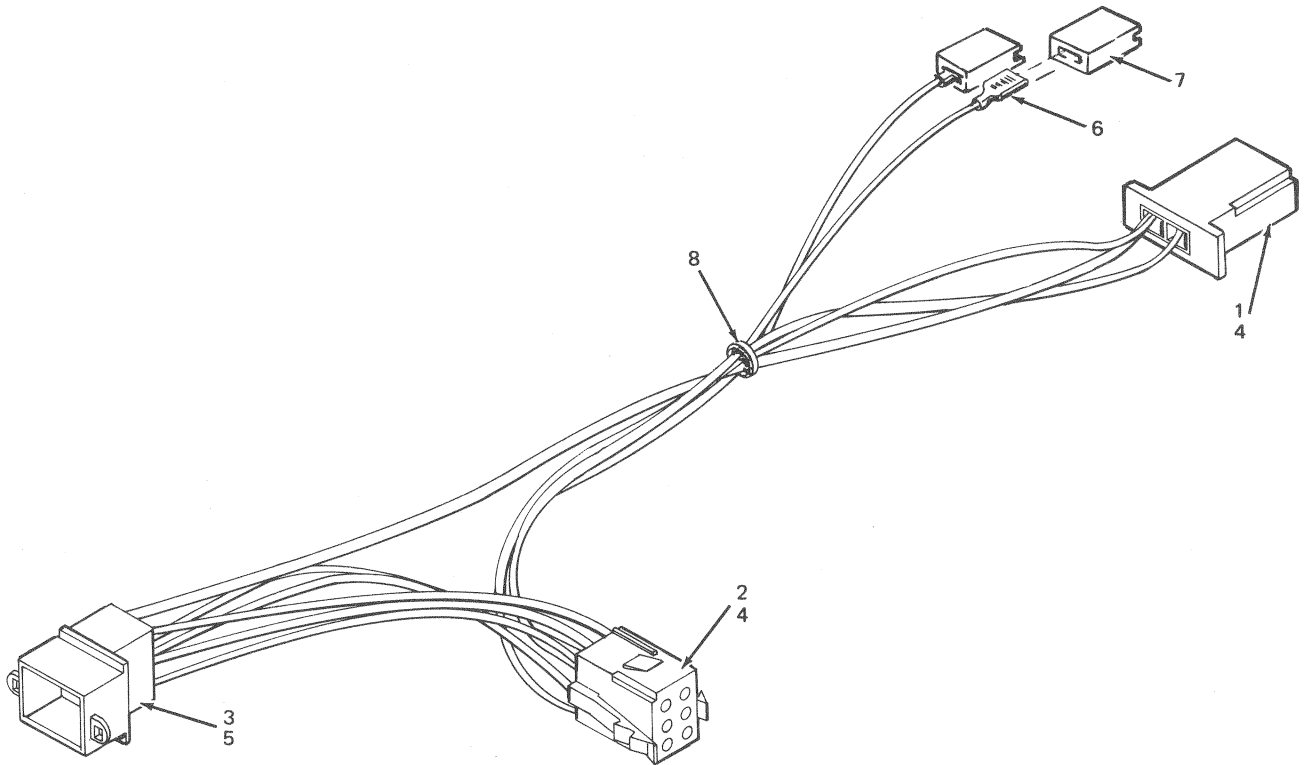
Figure 3. D.C. Harness Assembly

Date	Description	Debit	Credit	Balance	Remarks

[Faint, illegible text, possibly bleed-through from the reverse side of the page]



FIG & ITEM NO.	DESCRIPTION	DEC PART NO.	ECO CUT-IN 70-08810 00001	USED ON CODE	VENDOR		REF FIG NO.
					CODE	PART NO.	
4-	A.C. HARNESS ASSEMBLY	70-08810-00					1
1	*Connector, (J5) Socket Housing, 2 Pin Mate-N-Lok	12-10821-02					
2	*Connector, (J1) Socket Housing, 6 Pin Mate-N-Lok	12-09350-06					
3	*Connector, (J2) Pin Housing, 6 Pin Mate-N-Lok	12-09351-06					
4	*Terminal, (J1, J5) Socket Contact	12-09379-01					
5	*Terminal, (J2) Pin Contact	12-09378-01					
6	*Terminal, Fastab	12-10820-02					
7	*Housing, Fastab Socket	12-10820-01					
8	*Tie Wrap	90-07031-00					
							DEC



11-1975

Figure 4. A.C. Harness Assembly

