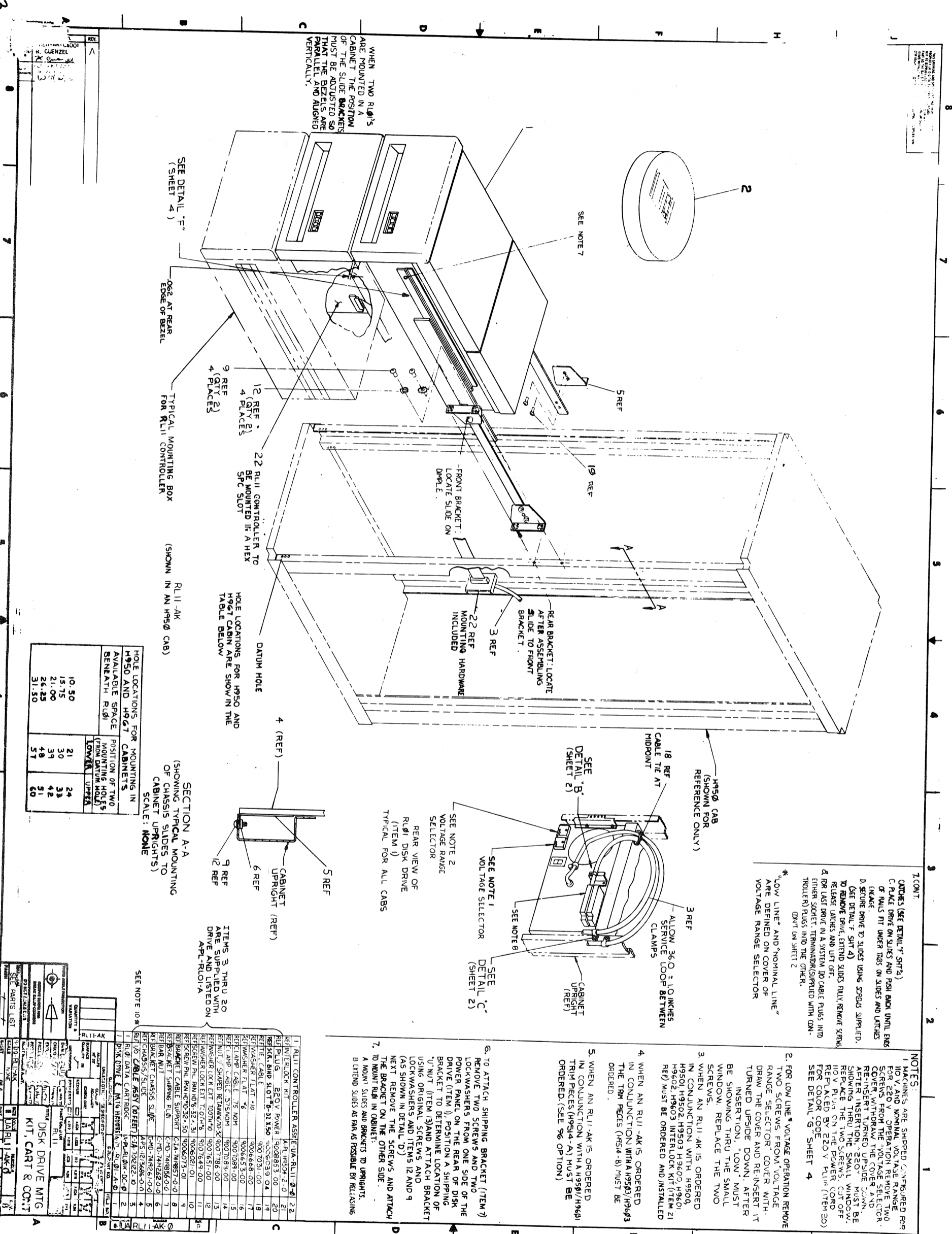


THIS DRAWING IS THE PROPERTY OF THE COMPANY AND IS NOT TO BE REPRODUCED OR TRANSMITTED IN ANY FORM OR BY ANY MEANS, ELECTRONIC OR MECHANICAL, INCLUDING PHOTOCOPYING, RECORDING, OR BY ANY INFORMATION STORAGE AND RETRIEVAL SYSTEM.



WHEN TWO RUII'S ARE MOUNTED IN A CABINET THE POSITION OF THE SLIDE BRACKETS MUST BE ADJUSTED SO THAT THE BEZELS ARE PARALLEL AND ALIGNED VERTICALLY.

SEE DETAIL "F" (SHEET 4)

EDGE AT REAR OF BEZEL

TYPICAL MOUNTING BOX FOR RUII CONTROLLER (SHOWN IN AN H950 CAB)

SECTION A-A (SHOWING TYPICAL MOUNTING OF CHASSIS SLIDES TO CABINET UPRIGHTS) SCALE: NONE

HOLE LOCATIONS FOR H950 AND H960 MOUNTING HOLES (FROM DATUM HOLE)		POSITION OF TWO MOUNTING HOLES (FROM DATUM HOLE)	
AVAILABLE SPACE	HOLE LOCATIONS FOR H950 AND H960	LOWER	UPPER
10.50	21	24	33
15.75	30	39	42
21.00	39	48	51
26.25	48	57	60
31.50	57		

ITEM NO.	DESCRIPTION	QTY	UNIT	REMARKS
1	RUII CONTROLLER ASSEMBLY (RUII-01)	2	EA	
2	REINFORCEMENT KIT	1	EA	
3	REAR PLUG	2	EA	
4	REAR POWER	1	EA	
5	REAR BIND SLOT	6	EA	
6	REAR WASHERS	12	EA	
7	REAR WASHER FLAT	12	EA	
8	REAR WASHER FLAT	12	EA	
9	REAR WASHER FLAT	12	EA	
10	REAR WASHER FLAT	12	EA	
11	REAR WASHER FLAT	12	EA	
12	REAR WASHER FLAT	12	EA	
13	REAR WASHER FLAT	12	EA	
14	REAR WASHER FLAT	12	EA	
15	REAR WASHER FLAT	12	EA	
16	REAR WASHER FLAT	12	EA	
17	REAR WASHER FLAT	12	EA	
18	REAR WASHER FLAT	12	EA	
19	REAR WASHER FLAT	12	EA	
20	REAR WASHER FLAT	12	EA	
21	REAR WASHER FLAT	12	EA	
22	REAR WASHER FLAT	12	EA	
23	REAR WASHER FLAT	12	EA	
24	REAR WASHER FLAT	12	EA	
25	REAR WASHER FLAT	12	EA	
26	REAR WASHER FLAT	12	EA	
27	REAR WASHER FLAT	12	EA	
28	REAR WASHER FLAT	12	EA	
29	REAR WASHER FLAT	12	EA	
30	REAR WASHER FLAT	12	EA	
31	REAR WASHER FLAT	12	EA	
32	REAR WASHER FLAT	12	EA	
33	REAR WASHER FLAT	12	EA	
34	REAR WASHER FLAT	12	EA	
35	REAR WASHER FLAT	12	EA	
36	REAR WASHER FLAT	12	EA	
37	REAR WASHER FLAT	12	EA	
38	REAR WASHER FLAT	12	EA	
39	REAR WASHER FLAT	12	EA	
40	REAR WASHER FLAT	12	EA	
41	REAR WASHER FLAT	12	EA	
42	REAR WASHER FLAT	12	EA	
43	REAR WASHER FLAT	12	EA	
44	REAR WASHER FLAT	12	EA	
45	REAR WASHER FLAT	12	EA	
46	REAR WASHER FLAT	12	EA	
47	REAR WASHER FLAT	12	EA	
48	REAR WASHER FLAT	12	EA	
49	REAR WASHER FLAT	12	EA	
50	REAR WASHER FLAT	12	EA	
51	REAR WASHER FLAT	12	EA	
52	REAR WASHER FLAT	12	EA	
53	REAR WASHER FLAT	12	EA	
54	REAR WASHER FLAT	12	EA	
55	REAR WASHER FLAT	12	EA	
56	REAR WASHER FLAT	12	EA	
57	REAR WASHER FLAT	12	EA	
58	REAR WASHER FLAT	12	EA	
59	REAR WASHER FLAT	12	EA	
60	REAR WASHER FLAT	12	EA	

NOTES:
 1. CABINETS ARE SHIPPED CONFIGURED FOR 120 VAC OPERATION. RANGE SELECTOR FOR 220 VAC OPERATION MUST BE ORDERED.
 2. FOR LOW LINE VOLTAGE OPERATION REMOVE TWO SCREWS FROM "VOLTAGE RANGE SELECTOR" COVER WITH "TURNED UPSIDE DOWN". AFTER INSERTION, "LOW" MUST BE SHOWING THRU THE SMALL WINDOW. REPLACE THE TWO SCREWS. CUT OFF BY PLUG IN THE POWER CORD FOR CANCELED BY 220V PLUG (ITEM 20) SEE DETAIL "G" SHEET 4.
 3. WHEN AN RUII-AK IS ORDERED IN CONJUNCTION WITH H9500, H9501, H9502, H9503, H9600, H9601, H9602, H9603 INTERLOCK KIT (ITEM 21 REF) MUST BE ORDERED AND INSTALLED.
 4. WHEN AN RUII-AK IS ORDERED IN CONJUNCTION WITH A H9505/H9603 THE TRIM PIECES (H9514-B) MUST BE ORDERED.
 5. WHEN AN RUII-AK IS ORDERED IN CONJUNCTION WITH A H9505/H9603 TRIM PIECES (H9514-A) MUST BE ORDERED. (SEE 9% OPTION)
 6. TO ATTACH SHIPPING BRACKET (ITEM 7) REMOVE TWO SCREWS AND TWO LOCKWASHERS FROM ONE SIDE OF THE POWER PANEL ON THE REAR OF DISK DRIVE (ITEM 1). POSITION A SHIPPING BRACKET TO DETERMINE LOCATION OF "U" NOT (ITEM 13) AND ATTACH BRACKET USING ORIGINAL SCREWS AND LOCKWASHERS AND ITEMS 12 AND 9 (AS SHOWN IN DETAIL "D")
 7. NEXT REMOVE THE SCREWS AND ATTACH THE BRACKET ON THE OTHER SIDE.
 8. TO MOUNT RUII IN CABINET:
 A. MOUNT SLIDES AND BRACKETS TO UPRIGHTS.
 B. EXTEND SLIDES AS FAR AS POSSIBLE BY RELAXING

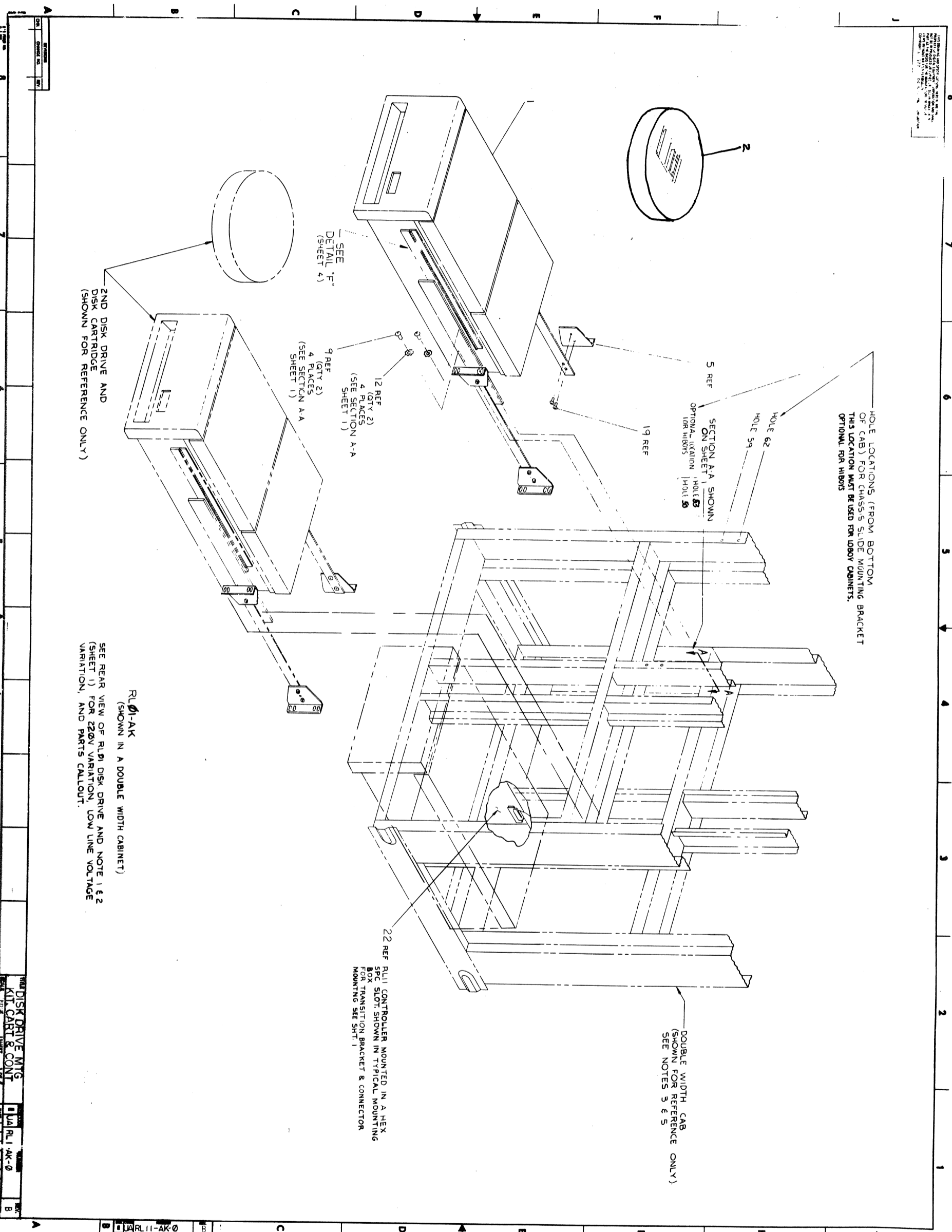
REAR VIEW OF RUII DISK DRIVE (ITEM 1) TYPICAL FOR ALL CABS

ITEMS 3 THRU 20 ARE SUPPLIED WITH APPL-RUII-A

SEE NOTE 10A

SEE PARTS LIST

ALL DIMENSIONS ARE GIVEN UNLESS OTHERWISE SPECIFIED IN MILLIMETERS.
 DIMENSIONS IN PARENTHESES ARE GIVEN IN INCHES.
 DIMENSIONS IN BRACKETS ARE GIVEN IN MILLIMETERS.
 DIMENSIONS IN PARENTHESES ARE GIVEN IN INCHES.
 DIMENSIONS IN BRACKETS ARE GIVEN IN MILLIMETERS.



2ND DISK DRIVE AND DISK CARTRIDGE (SHOWN FOR REFERENCE ONLY)

RLD1-AK (SHOWN IN A DOUBLE WIDTH CABINET)
 SEE REAR VIEW OF RLD1 DISK DRIVE AND NOTE 1 & 2 (SHEET 1) FOR 220V VARIATION, LOW LINE VOLTAGE VARIATION, AND PARTS CALLOUT.

22 REF RLI1 CONTROLLER MOUNTED IN A HEX SPC SLOT SHOWN IN TYPICAL MOUNTING BOX FOR TRANSITION BRACKET & CONNECTOR MOUNTING SEE SHT 1

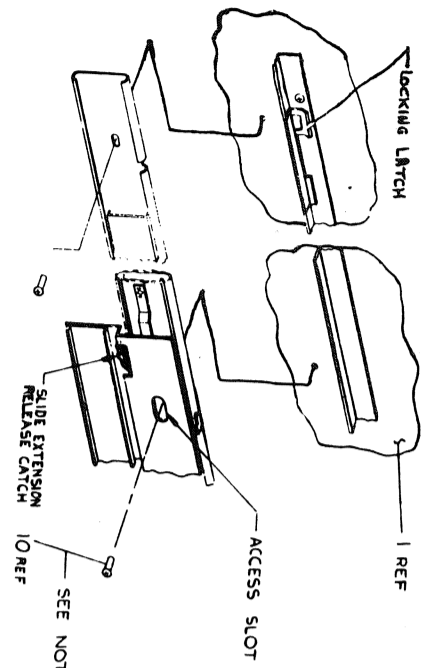
DOUBLE WIDTH CAB (SHOWN FOR REFERENCE ONLY) SEE NOTES 3 & 5

REV	DATE	BY	CHKD

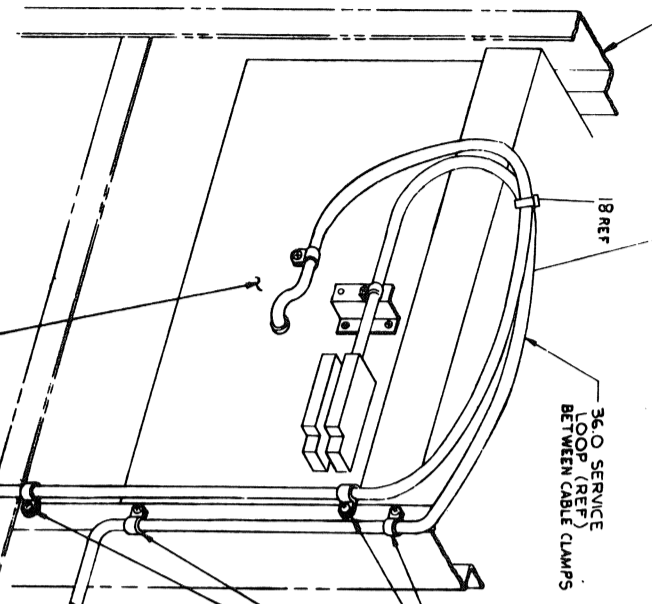
DISK DRIVE MTG KIT CABT & CONT	RLD1-AK-0

A	B	C	D	E	F	G	H	J

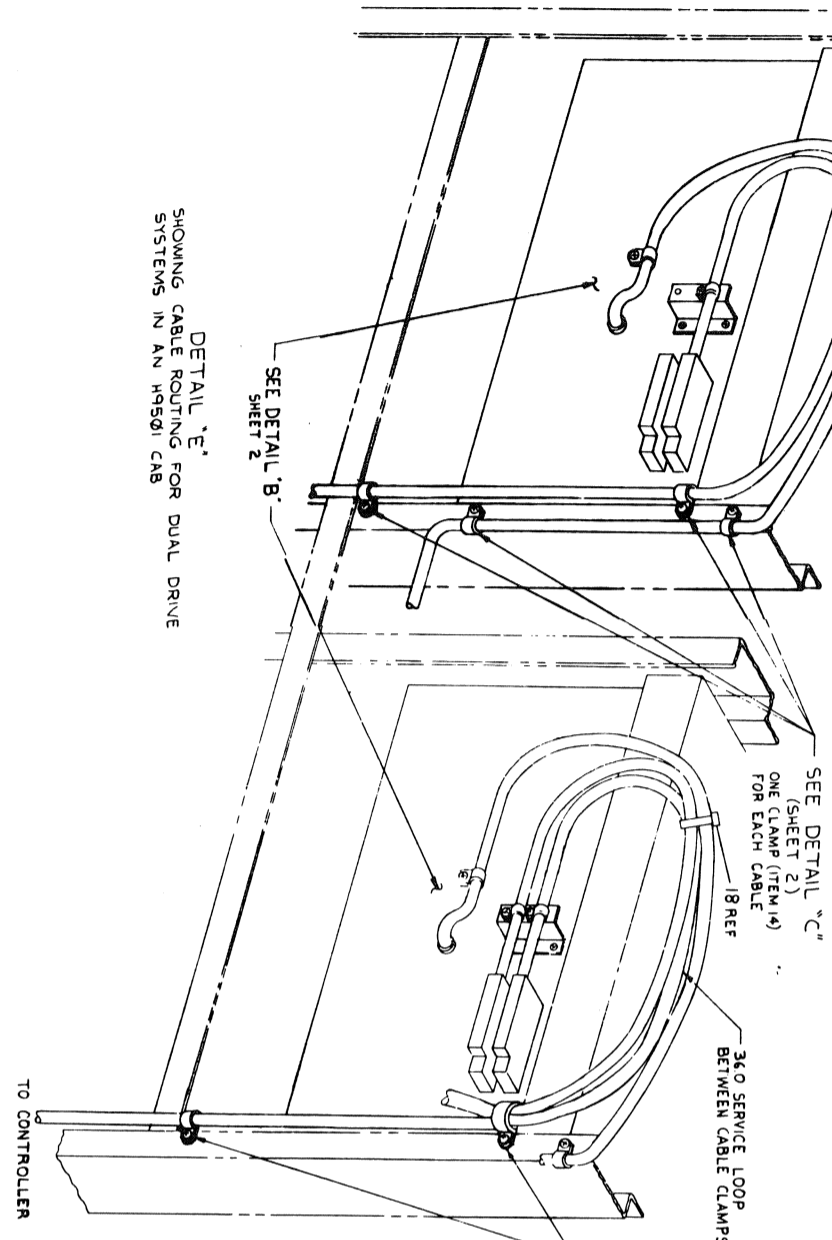
THIS DRAWING IS THE PROPERTY OF THE UNITED STATES GOVERNMENT. IT IS TO BE REPRODUCED AS SHOWN, NOT TO BE REPRODUCED IN ANY MANNER WITHOUT THE WRITTEN PERMISSION OF THE GOVERNMENT.



CABINET UPRIGHT (REF)

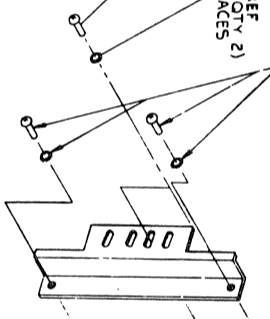


DETAIL 'E'
SHOWING CABLE ROUTING FOR DUAL DRIVE SYSTEMS IN AN H9501 CAB



9 REF (QTY 2) 2 PLACES

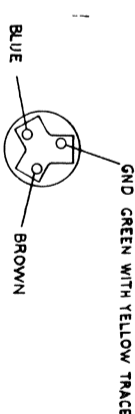
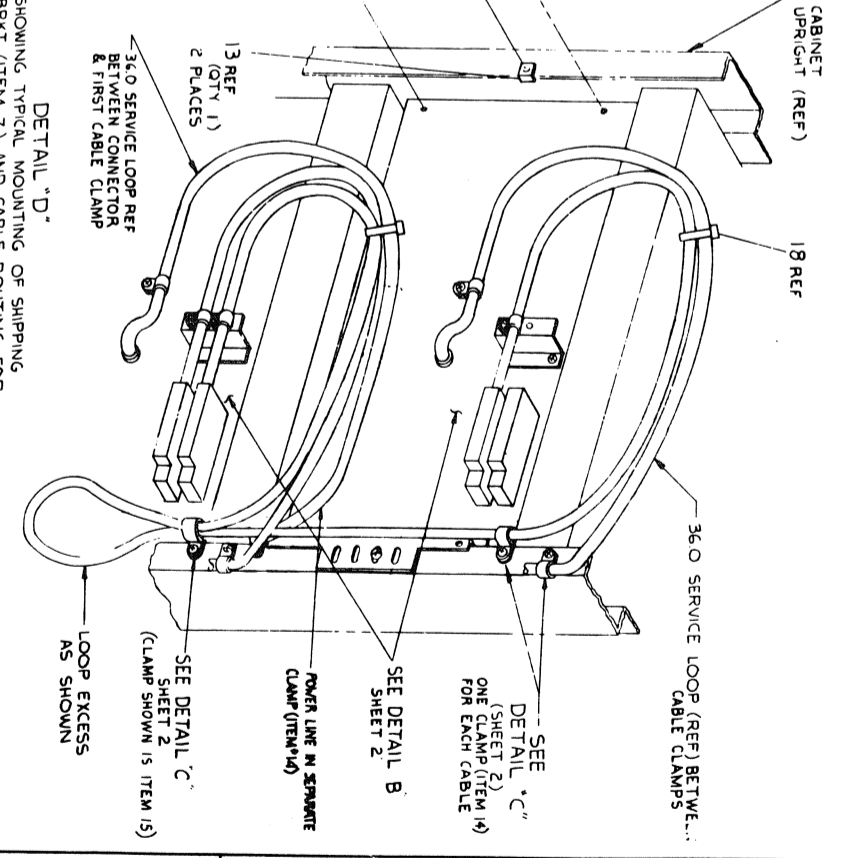
12 REF (QTY 2) 2 PLACES



7 REF (QTY 2)

13 REF (QTY 1) 2 PLACES

DETAIL 'D'
SHOWING TYPICAL MOUNTING OF SHIPPING BRKT (ITEM 7) AND CABLE ROUTING FOR DUAL DRIVE SYSTEMS IN AN H9501 CAB



REV	DESCRIPTION
1	ISSUED FOR PRODUCTION
2	REVISED TO SHOW CHANGES TO CABINET

1	DISK DRIVE MTG KIT CABT 8 CONT
2	DISK DRIVE MTG KIT CABT 8 CONT
3	DISK DRIVE MTG KIT CABT 8 CONT
4	DISK DRIVE MTG KIT CABT 8 CONT
5	DISK DRIVE MTG KIT CABT 8 CONT
6	DISK DRIVE MTG KIT CABT 8 CONT
7	DISK DRIVE MTG KIT CABT 8 CONT
8	DISK DRIVE MTG KIT CABT 8 CONT
9	DISK DRIVE MTG KIT CABT 8 CONT
10	DISK DRIVE MTG KIT CABT 8 CONT
11	DISK DRIVE MTG KIT CABT 8 CONT
12	DISK DRIVE MTG KIT CABT 8 CONT
13	DISK DRIVE MTG KIT CABT 8 CONT
14	DISK DRIVE MTG KIT CABT 8 CONT
15	DISK DRIVE MTG KIT CABT 8 CONT
16	DISK DRIVE MTG KIT CABT 8 CONT
17	DISK DRIVE MTG KIT CABT 8 CONT
18	DISK DRIVE MTG KIT CABT 8 CONT
19	DISK DRIVE MTG KIT CABT 8 CONT
20	DISK DRIVE MTG KIT CABT 8 CONT
21	DISK DRIVE MTG KIT CABT 8 CONT
22	DISK DRIVE MTG KIT CABT 8 CONT
23	DISK DRIVE MTG KIT CABT 8 CONT
24	DISK DRIVE MTG KIT CABT 8 CONT
25	DISK DRIVE MTG KIT CABT 8 CONT
26	DISK DRIVE MTG KIT CABT 8 CONT
27	DISK DRIVE MTG KIT CABT 8 CONT
28	DISK DRIVE MTG KIT CABT 8 CONT
29	DISK DRIVE MTG KIT CABT 8 CONT
30	DISK DRIVE MTG KIT CABT 8 CONT

**DIGITAL EQUIPMENT CORPORATION
MAYNARD, MASSACHUSETTS**

PARTS LIST

MADE BY	B. K. NICHOLS	CHECKED	<i>[Signature]</i>	SECTION	1
DATE	13 OCT. 77	DATE	16 NOV 77	ISSUED SECT.	1
ENG	<i>[Signature]</i>	PROD	<i>[Signature]</i>		
DATE	16 Nov 77	DATE	17 NOV. 77		

ITEM NO.	DWG NO./PART NO.	DESCRIPTION	QUANTITY VARIATION							
			ZJ256-RB							
1	MAINDEC-11-DZRIA-D	RL11/RLV11 RLØ1 CONT. TEST (PT.1) DOCUMENT	1							
2	MAINDEC-11-DZRIA-PB	RL11/RLV11 RLØ1 CONT. TEST (PT.1) BIN. TP.	1							
3	MAINDEC-11-DZRLB-D	RL11/RLV11 RLØ1 CONT. TEST (PT.2) DOCUMENT	1							
4	MAINDEC-11-DZRLB-PB	RL11/RLV11 RLØ1 CONT. TEST (PT.2) BIN. TP.	1							
5	MAINDEC-11-DZRLC-D	RLØ1 DRIVE TEST (PT.1) DOCUMENT	1							
6	MAINDEC-11-DZRLC-PB	RLØ1 DRIVE TEST (PT.1) BINARY TAPE	1							
7	MAINDEC-11-DZRLD-D	RLØ1 DRIVE TEST (PT.2) DOCUMENT	1							
8	MAINDEC-11-DZRLD-PB	RLØ1 DRIVE TEST (PT.2) BINARY TAPE	1							
9	MAINDEC-11-DZRL E-D	RLØ1 PERFORMANCE EXERCISER DOCUMENT	1							
10	MAINDEC-11-DZRL E-PB	RLØ1 PERFORMANCE EXERCISER BINARY TAPE	1							
11	MAINDEC-11-DZRLF-D	RLØ1 DRIVE COMPATABILITY PROG. DOCUMENT	1							
12	MAINDEC-11-DZRLF-PB	RLØ1 DRIVE COMPATABILITY PROG. BINARY TAPE	1							
TITLE										
SOFTWARE LIST RL11-AK										
ASSY NO.		A-PL-RL11-AK-2	SIZE	CODE	NUMBER	REV	ECO NO.			
SHEET 1 OF 1			A	PL	ZJ256-RB					
DIST										

DEC FORM
MAY 1976