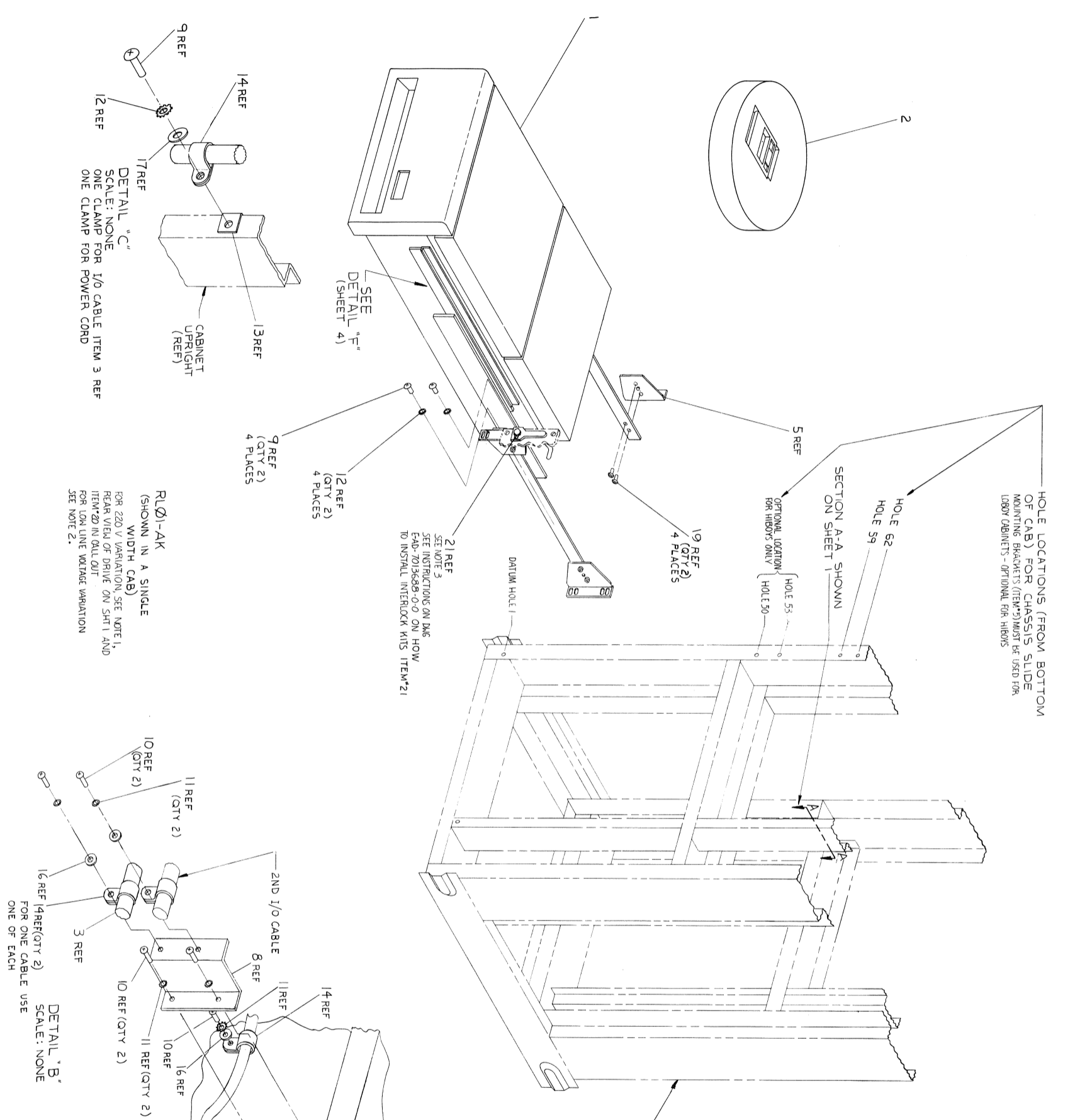


THIS DRAWING IS THE PROPERTY OF INTERNATIONAL BUSINESS MACHINES CORPORATION. IT IS TO BE USED ONLY FOR THE PROJECT AND SITE SPECIFICALLY IDENTIFIED HEREIN. IT IS NOT TO BE REPRODUCED, COPIED, OR TRANSMITTED IN ANY FORM OR BY ANY MEANS, ELECTRONIC OR MECHANICAL, INCLUDING PHOTOCOPYING, RECORDING, OR BY ANY INFORMATION STORAGE AND RETRIEVAL SYSTEM, WITHOUT THE WRITTEN PERMISSION OF INTERNATIONAL BUSINESS MACHINES CORPORATION.



- NOTES: (CONT)
9. CABINET OPTIONS INCLUDE SKINS, DOORS, COVERS, TRIM/PAR CONTROLLERS.

TYPE	VOLTAGE	DRG.	REMARKS
H960	110	H960-BC	INCLUDES FIVE 0.5 IN. PANELS
H967	220	H967-BA	0.5 IN. COVER PANELS (H960-BA) MUST BE ORDERED IF REQUIRED.
H9600	110	H9603-FB	SKIN WITH H9614-B TOP COVERS.
	220	H9601-FD	SKIN WITH H9614-A TOP COVERS.
	110	H9602-EB	SKIN - COMPLETE HIROY CABINET.
	220	H9600-EB	DVMB - COMPLETE HIROY CABINET.
		H9602-B-0	SMHB OPTION ARRANGEMENT DWG. ORDER AS REQ.
		H9600-A-0	DHAB OPTION ARRANGEMENT DWG. ORDER AS REQ.
		H9603-B-0	SWLB OPTION ARRANGEMENT DWG. ORDER AS REQ.
		H9601-A-0	DWLB OPTION ARRANGEMENT DWG. ORDER AS REQ.

 10. WHERE A LONGER CABLE IS REQUIRED THAN ITEM #3 USE ONE OF THE FOLLOWING:
 LENGTH PART NO.
 20 FEET 7012122-20
 40 FEET 7012122-40
 60 FEET 7012122-60
 TOTAL LENGTH OF CABLE(S) NOT TO EXCEED 100 FEET
 11. OPTIONAL CABLE ROUTING INSIDE CHANNEL UPRIGHTS. DO NOT ALLOW CABLES TO BE CAUGHT BETWEEN CABINET UPRIGHTS AND REAR OF DISK DRIVE.

REV.	DESCRIPTION	DATE

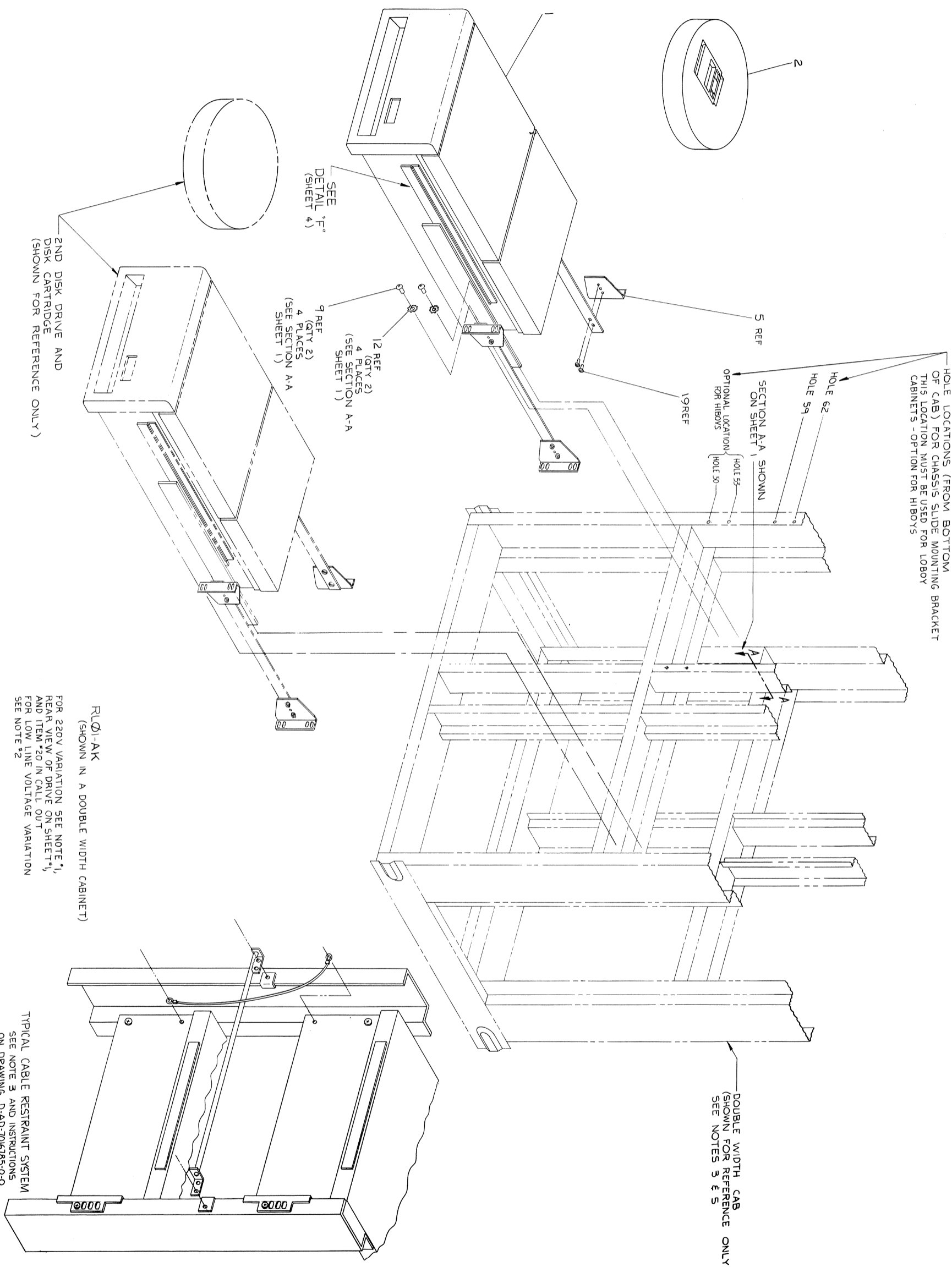
REV.	NUMBER	DESCRIPTION

DISK DRIVE MTG KIT & CARTRIDGE

SCALE: NONE

SHEET 2 OF 4

THIS DRAWING AND ASSOCIATED MATERIALS ARE THE PROPERTY OF INTERNATIONAL BUSINESS MACHINES CORPORATION. IT IS TO BE USED ONLY FOR THE PROJECT AND SITE SPECIFICALLY IDENTIFIED IN THE DRAWING. IT IS NOT TO BE REPRODUCED, COPIED, OR TRANSMITTED IN ANY FORM OR BY ANY MEANS, ELECTRONIC OR MECHANICAL, INCLUDING PHOTOCOPYING, RECORDING, OR BY ANY INFORMATION STORAGE AND RETRIEVAL SYSTEM, WITHOUT THE WRITTEN PERMISSION OF INTERNATIONAL BUSINESS MACHINES CORPORATION.



HOLE LOCATIONS (FROM BOTTOM OF CAB) FOR CHASSIS SLIDE MOUNTING BRACKET
THIS LOCATION MUST BE USED FOR LOBOY CABINETS - OPTION FOR HI80YS

SECTION A-A SHOWN ON SHEET 1

OPTIONAL LOCATION FOR HI80YS

HOLE 62
HOLE 59
HOLE 55
HOLE 50

19 REF

5 REF

12 REF (QTY 2)
4 PLACES (SEE SECTION A-A SHEET 1)

9 REF (QTY 2)
4 PLACES (SEE SECTION A-A SHEET 1)

SEE DETAIL 'F' (SHEET 4)

2ND DISK DRIVE AND DISK CARTRIDGE (SHOWN FOR REFERENCE ONLY)

DOUBLE WIDTH CAB (SHOWN FOR REFERENCE ONLY) SEE NOTES 3 & 5

RLDI-AK (SHOWN IN A DOUBLE WIDTH CABINET)

TYPICAL CABLE RESTRAINT SYSTEM

FOR 220V VARIATION SEE NOTE 1, REAR VIEW OF DRIVE ON SHEET 1, AND ITEM *20 IN CALL OUT FOR LOW LINE VOLTAGE VARIATION SEE NOTE *2

REV	DESCRIPTION
1	ISSUED
2	CHANGE NO. 1
3	REV

TITLE	DISK DRIVE MTG KIT & CARTRIDGE
SCALE	NONE
SHEET	3 OF 4
DATE	
DESIGNER	
CHECKER	
APPROVER	
DATE	

RLDI-AK-0

