

"THE MATERIAL HEREIN IS FOR INFORMATION PURPOSES ONLY AND IS SUBJECT TO CHANGE WITHOUT NOTICE. DIGITAL EQUIPMENT CORPORATION ASSUMES NO RESPONSIBILITY FOR ANY ERRORS WHICH MAY APPEAR HEREIN."

DRAWING DIRECTORY

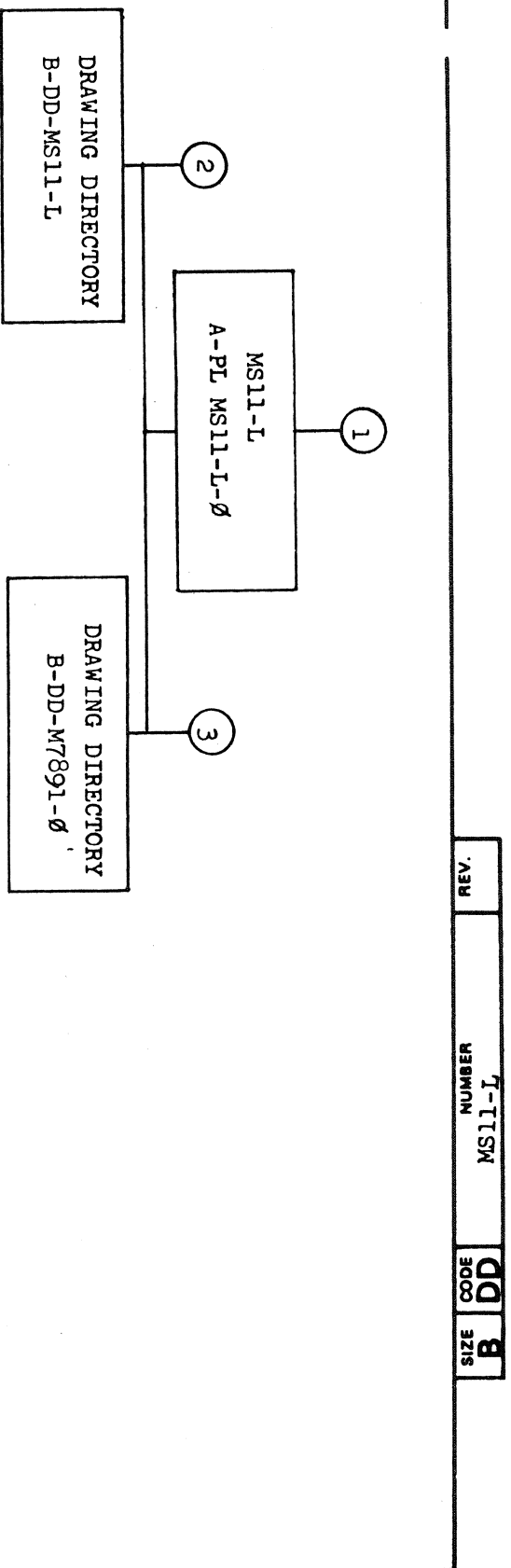
THIS DRAWING AND SPECIFICATIONS, HEREIN, ARE THE PROPERTY OF DIGITAL EQUIPMENT CORPORATION AND SHALL NOT BE REPRODUCED OR COPIED OR USED IN WHOLE OR IN PART AS THE BASIS FOR THE MANUFACTURE OR SALE OF ITEMS WITHOUT WRITTEN PERMISSION. COPYRIGHT © 1978 DIGITAL EQUIPMENT CORPORATION.

[illegible]

NOTE: FOR FIELD MAINTENANCE PRINT SET
SEE B-TC-MS11-L-1

[illegible]

"THIS DRAWING AND SPECIFICATIONS, HEREIN, ARE THE PROPERTY OF DIGITAL EQUIPMENT CORPORATION AND SHALL NOT BE REPRODUCED OR COPIED OR USED IN WHOLE OR IN PART AS THE BASIS FOR THE MANUFACTURE OR SALE OF ITEMS WITHOUT WRITTEN PERMISSION. 1978
COPYRIGHT © DIGITAL EQUIPMENT CORPORATION"



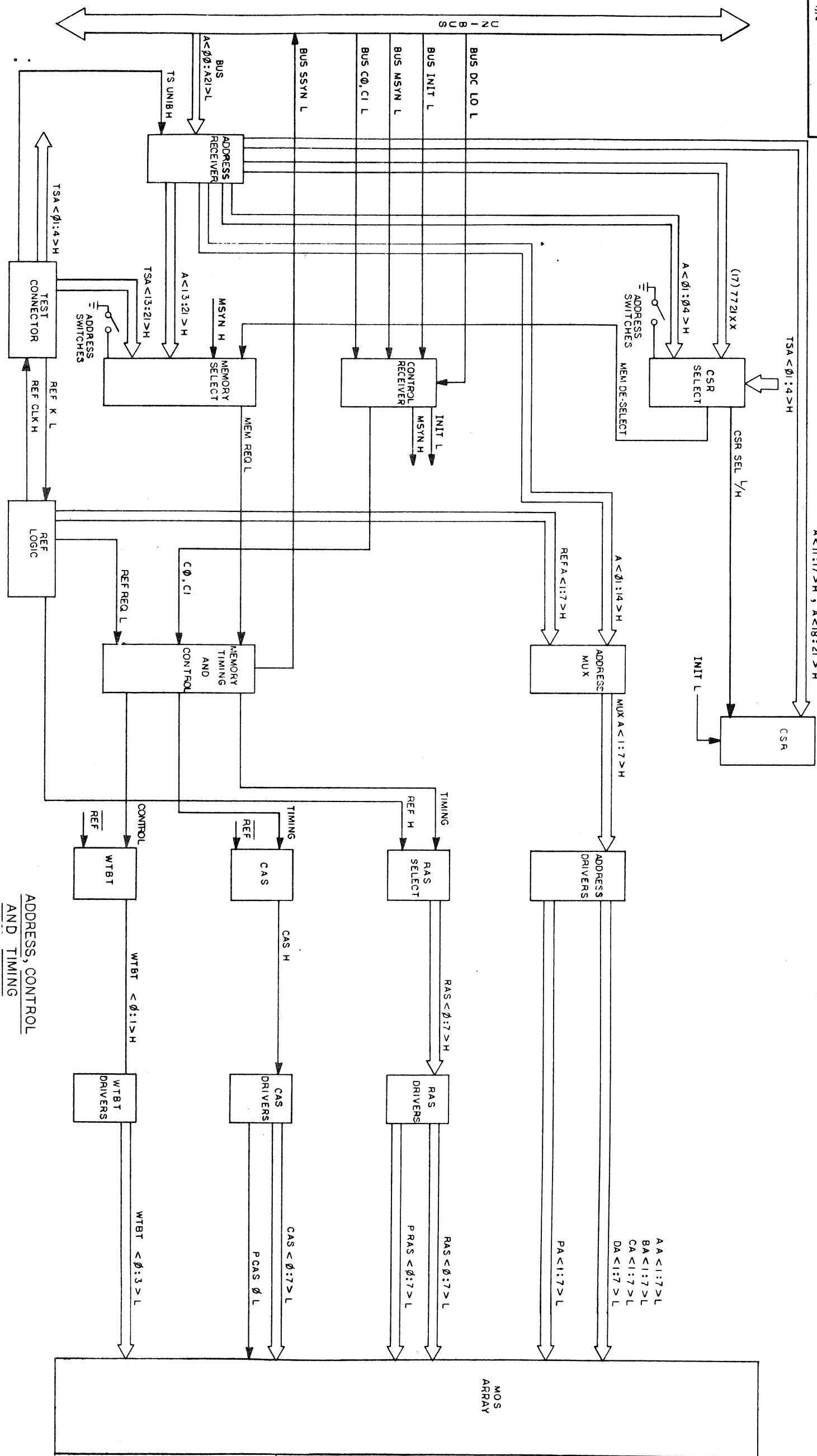
TITLE	SIZE CODE	NUMBER	REV
DRAWING DIRECTORY MS11 (128K X 18) MOS MEMORY SYSTEM	B DD	MS11-L	*

**DIGITAL EQUIPMENT CORPORATION
MAYNARD, MASSACHUSETTS
PARTS LIST**

MADE BY E. DEVRIES		CHECKED R. manin		SECTION 1
DATE		DATE	9/14/78	
ENG	R. Brown	PROD	3 of 8	ISSUED SECT. 1
DATE	9-28-78	DATE	9/28/78	

[illegible]

THIS DRAWING AND SPECIFICATION, HEREON, ARE THE PROPERTY OF SAMSUNG ELECTRONICS CO., LTD. AND ARE TO BE USED ONLY FOR THE PURPOSES SPECIFIED HEREIN. NO PART OF THIS DRAWING OR SPECIFICATION IS TO BE REPRODUCED OR TRANSMITTED IN ANY FORM OR BY ANY MEANS, ELECTRONIC OR MECHANICAL, INCLUDING PHOTOCOPYING, RECORDING, OR BY ANY INFORMATION STORAGE AND RETRIEVAL SYSTEM, WITHOUT PERMISSION IN WRITING FROM SAMSUNG ELECTRONICS CO., LTD.



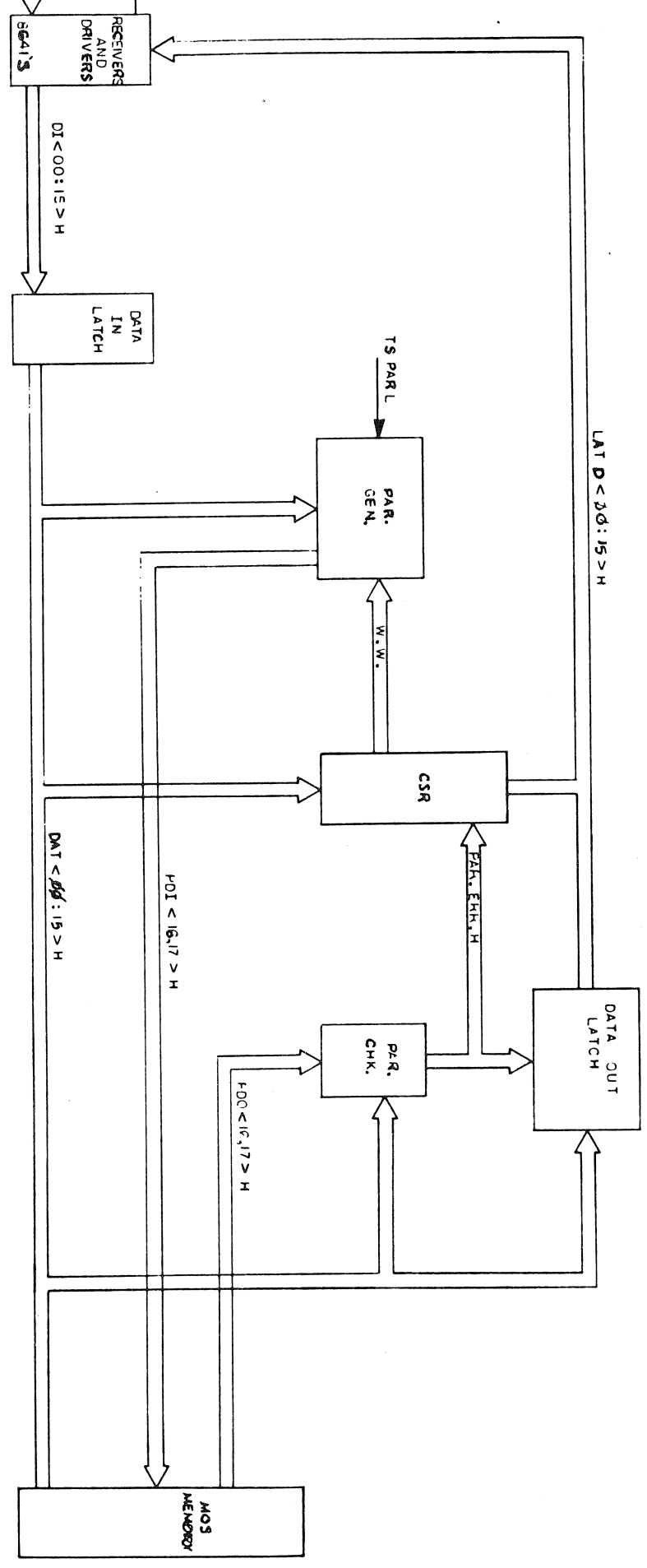
REV.	CHANGE NO.	REV.
1		

TITLE		MS11-L-4	
BLOCK DIAGRAM			
DATE	1/14/78	DESIGNED BY	1/14/78
ENG. R. J. JONES	1/14/78	PROJ. ENG. R. J. JONES	1/14/78
PROD. R. J. JONES	1/14/78	TEST. R. J. JONES	1/14/78
NEXT HIGHER ASSY			
B DD MS11-L-4			
SCALE			
SHEET 1 OF 2			
DIST.			

THIS DRAWING AND SPECIFICATIONS, HEREIN, ARE THE PROPERTY OF BENTLEY SYSTEMS CORPORATION AND SHALL NOT BE REPRODUCED OR COPIED IN ANY MANNER OR BY ANY MEANS, ELECTRONIC OR MECHANICAL, INCLUDING PHOTOCOPYING, RECORDING, OR BY ANY INFORMATION STORAGE AND RETRIEVAL SYSTEM, WITHOUT THE WRITTEN PERMISSION OF BENTLEY SYSTEMS CORPORATION.

UNIBUS

TEST CONNECTOR
TS PAR L



REVISIONS		TITLE		SHEET		DATE		BY		CHK		REV.	
1	1	MSI1-L	1	2	2	1	1	1	1	1	1	1	1
2	2	MSI1-L-4	2	2	2	1	1	1	1	1	1	1	1
3	3	MSI1-L-4	3	2	2	1	1	1	1	1	1	1	1
4	4	MSI1-L-4	4	2	2	1	1	1	1	1	1	1	1
5	5	MSI1-L-4	5	2	2	1	1	1	1	1	1	1	1
6	6	MSI1-L-4	6	2	2	1	1	1	1	1	1	1	1
7	7	MSI1-L-4	7	2	2	1	1	1	1	1	1	1	1
8	8	MSI1-L-4	8	2	2	1	1	1	1	1	1	1	1

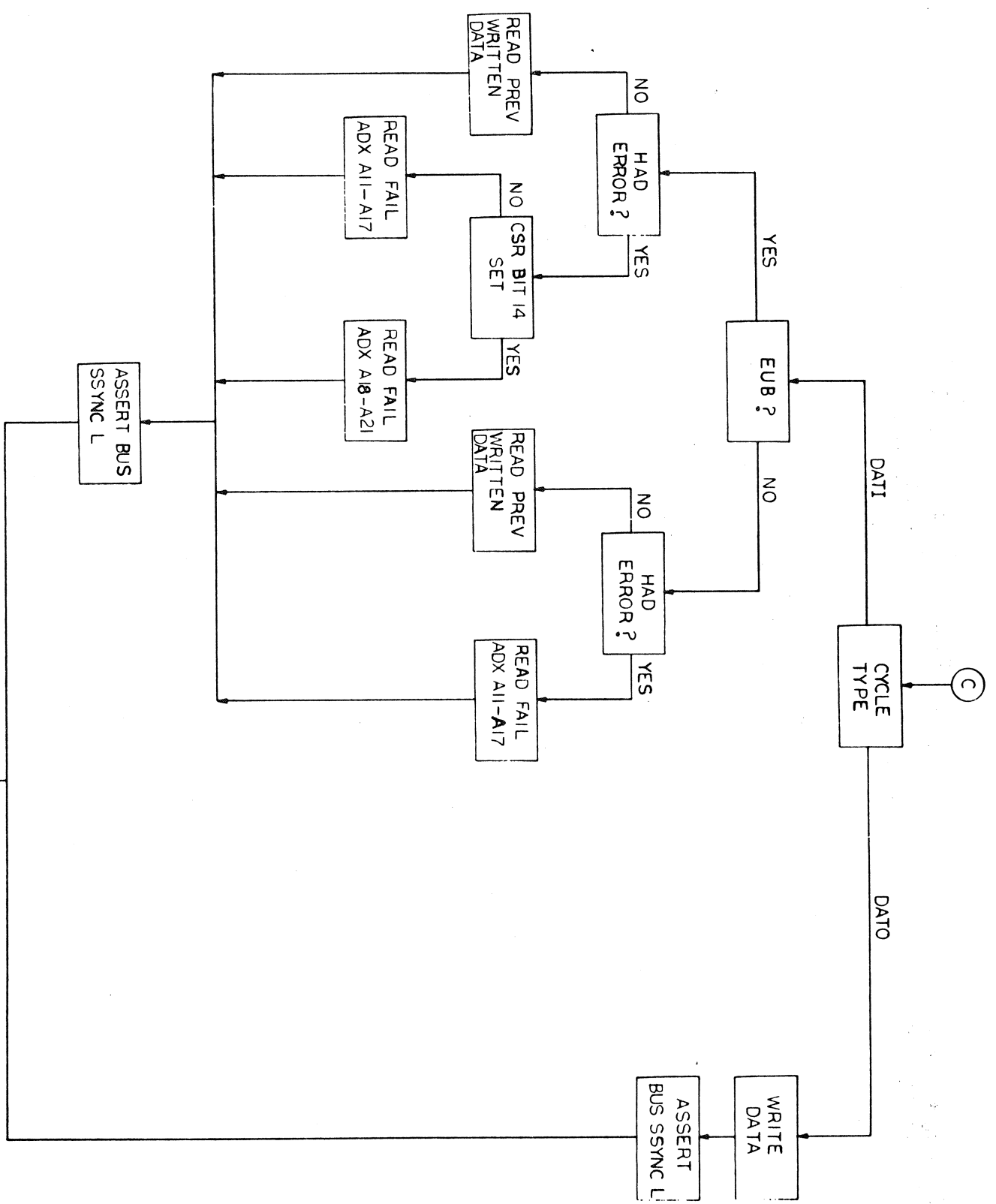
2	Q3D	MSI-11SW	* INT.
---	-----	----------	-----------



REVISIONS	
CHANGE NO.	REV.

DRA. C. J. VILLANUEVA		27.6.78		FIRST USED ON		[Signature]	
CHARTER MEMBER 2		1/21/78		TITLE		MSI I-L (DAT/ DATO)	
ENCL. 8 Sheets		7-28-78		FLOW DIAGRAM			
PROC. ENCL. 8 Pgs		1/28/78					
PROG. 61, 114		1/2/78					
NEXT HIGHER ASSY.							
B-D-D - MSI I - L		SCALE		SIZE CODE		NAME	
SCALE		1 OF 2		D		MSI I - L - 5	
SHEET				DIST.		REV.	
						*	

THIS DRAWING AND SPECIFICATION, HEREIN, ARE THE PROPERTY OF THE UNITED STATES GOVERNMENT AND ARE TO BE USED FOR THE PURPOSES OF THE CONTRACT ONLY. NO PART OF THIS DRAWING OR SPECIFICATION IS TO BE REPRODUCED OR TRANSMITTED IN ANY FORM OR BY ANY MEANS, ELECTRONIC OR MECHANICAL, INCLUDING PHOTOCOPYING, RECORDING, OR BY ANY INFORMATION STORAGE AND RETRIEVAL SYSTEM, WITHOUT PERMISSION IN WRITING FROM THE UNITED STATES GOVERNMENT.



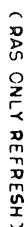
REVISIONS	
CHK	CHANGE NO.
REV.	

8									
7									
6									
5									
4									
3									

TITLE MSII-L (DATA/DATO)
 FLOW DIAGRAM
 SCALE 1:1
 SHEET 2 OF 2

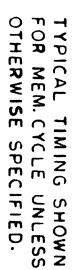
SIZE/CD	NUMBER	REV.
D FD	MSII-L-5	*

0 50NS 100NS 150NS 200NS 250NS 300NS 350NS 400NS 450NS 500NS 550NS 600NS 650NS



SIZE	CODE	NUMBER	REV.
D	TD	MSII-L-6	*

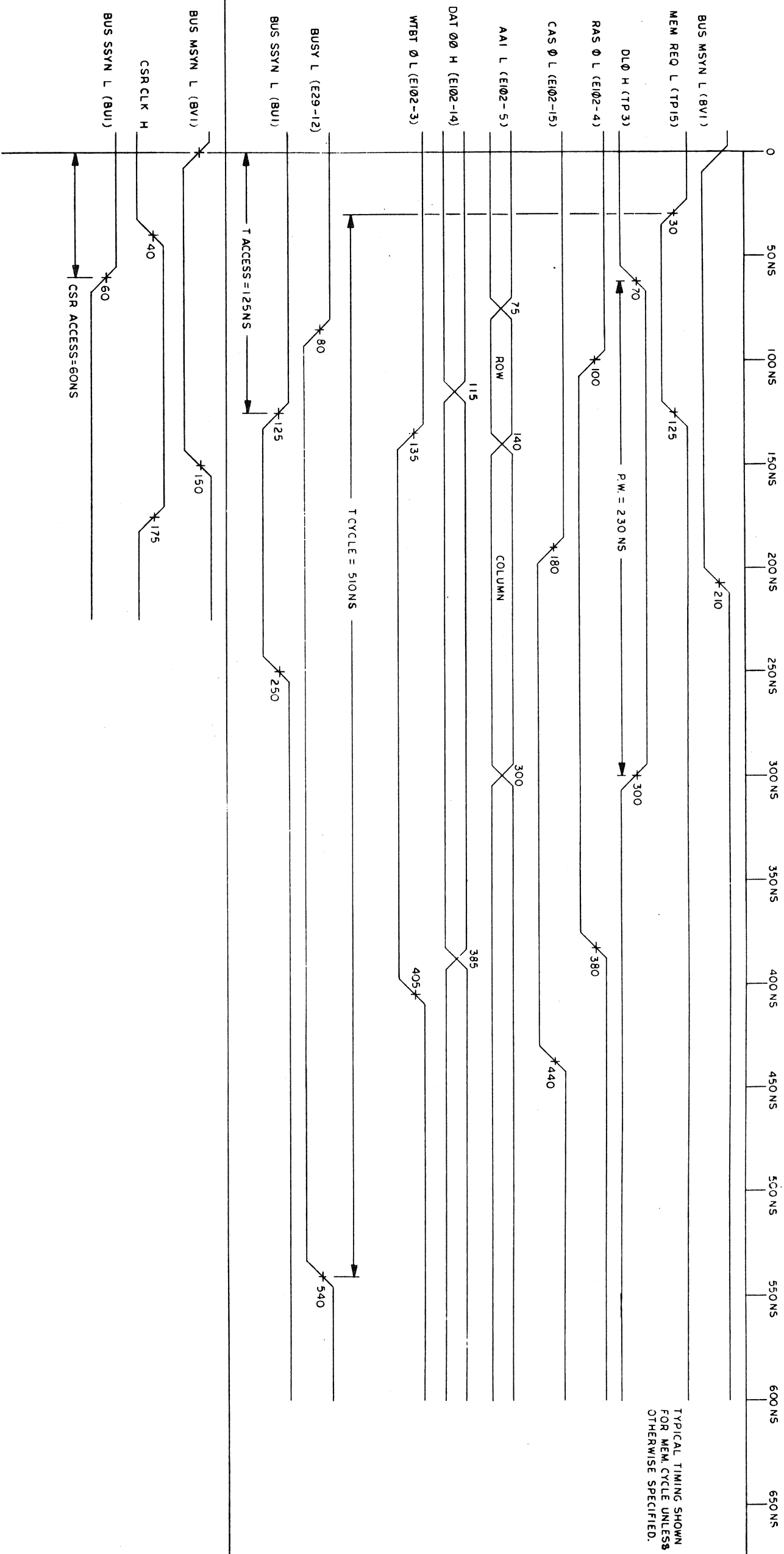
0
50 NS
100 NS
150 NS
200 NS
250 NS
300 NS
350 NS
400 NS
450 NS
500 NS
550 NS
600 NS
650 NS



SIZE	CODE	NUMBER	REV
D	TD	MSII-L-6	*

THIS DRAWING AND SPECIFICATIONS HEREIN ARE THE PROPERTY OF DIGITAL EQUIPMENT CORPORATION. IT IS TO BE USED FOR THE DESIGN, CONSTRUCTION, AND TESTING OF EQUIPMENT OR SYSTEMS SPECIFICALLY ORDERED BY OR FOR THE ACCOUNT OF THE CUSTOMER. IT IS NOT TO BE REPRODUCED OR COPIED IN WHOLE OR IN PART WITHOUT THE WRITTEN PERMISSION OF DIGITAL EQUIPMENT CORPORATION. DIGITAL EQUIPMENT CORPORATION 1978

DATO CYCLE



REVISIONS		TITLE		SIZE/COOD		NUMBER		REV.	
CHK	CHANGE NO.	REV.	MS11-L TIMING	DIAGRAM	D	TD	MS11-L-6	*	
SCALE		SHEET 3 OF 3		DIST.					

DRAWING NO.
NO.
OF
SHTS.

PART NO.

DESCRIPTION

REVISIONS

SIZE B	CODE DD	NUMBER M7891-Ø	REV. E
------------------	-------------------	--------------------------	------------------

SIZE	CODE
B	DD

[illegible]

NOTES:

REVISIONS		
DATE	CHG NO.	REV.
12/78	ML001	A
4/79	ML002	B
1/80	ML003	C
4/80	ML004	D
11/80	ML005	E

THIS DRAWING AND SPECIFICATIONS, HEREIN, ARE THE PROPERTY OF DIGITAL EQUIPMENT CORPORATION AND SHALL NOT BE REPRODUCED OR COPIED OR USED IN WHOLE OR IN PART AS THE BASIS FOR THE MANUFACTURE OR SALE OF ITEMS WITHOUT WRITTEN PERMISSION.

विगित्त

COPYRIGHT © 1978 DIGITAL EQUIPMENT CORPORATION

USED ON OPTION/MODEL		TITLE	
11/34		128K X 18 MOS MEMORY	
CHK'D	R. MANION	9/26/78	
ENG.	R. GIVEN	9/28/78	
PROD.	B. SCHAAF	9/21/78	
SHEET 1 OF 1		SIZE	CODE
		B	DD
		NUMBER	REV.
		M7891-0	2

DRN.	E. DEVRIES	14AUG78	TITLE									
CHK'D	R. MANION	9/26/78	128K X 18 MOS MEMORY									
ENG.	R. GIVEN	9/28/78	SIZE	CODE	NUMBER		REV.					
PROD.	B. SCHAAF	9/21/78	B	DD	M7891-0		1					
			SHEET 1 OF 1									

LINE ITEM DOCUMENT NO.

PART NO.

DESCRIPTION

QTY REFERENCE DESIGNATORS

1	D-CG-M7891-0-1	1012084-01	CIRCUIT SCHEMATIC	REF	1	C1,C2,C141-C182,C264,C266,
2	D-UA-M7891-0-0	1012121-00	UNIT ASSEMBLY	REF	90	C268,C270,C272
3	D-DD-M7891-0-0	1012219-00	DRAWING DIRECTORY	REF	CONT	C6,C8,C184-C263,C267,C269,
4	D-MP-5013399-0-0	1109988-00	DRILL AND FITCH DRAWING	REF	4	C271,C273,C265,C278-C280
5	SEE NOTES BELOW.	5013399-00	128K X 18 MOS. MEM		4	C10-C12,C276
6		1001610-00	.01 MFD 50V 25U 309CER/8000PF MIN		5	C4,C5
7		1010279-01	.47 MFD 25V 20% 2C023 CER.		4	C3,C9,C274,C275,C277
8		1012084-01	8 MFD 25V G% 30D AL FL		2	
9		1012121-00	220.0 MWF 100V 1%200PPM DM155		5	
10		1012219-00	47. MFD 30V G% 600D AL FL		1	
11		1109988-00	***** THIS ITEM IS NOT USED *****		1	D3
12		1110324-00	LED 1MCD@10MA #MVS054-1#HP4882		1	D2
13		1114384-00	LED 105MW 35MA GREEN		1	J1
14		1209941-06	HEADER,100 20POS RT ANGLE		1	
15		1210711-02	HANDLE,HFX MODULE,10-1/2		1	F1
16		1211751-00	FUSE, SUB-MINI, 2.000A, 125V, AXIAL LEAD		1	E47
17		1211164-00	SW,DIP 1P 1A 4POS		1	E61
18		1211164-05	SW,DIP 1P 1A 9POS		3	R29,R32,R33
19		1300271-00	220 1/4W 5% CC (13-00		1	R3
20		1300295-00	330 1/4W 5% CC (13-00		5	R36-R40
21		1315679-00	R NETWORK 3-39 OHM RESISTORS 5% STP		4	R11,R14,R19,R23
22		1300316-00	470 1/4W 5% CC (13-00		4	R13,R16-R18
23		1300365-00	1 K 1/4W 5% CC (13-00		4	R12,R15,R28,R30
24		1301874-00	5.6 K 1/4W 5% CC (13-00		2	R8,R35
25		1302377-00	39 1/4W 5% CC (13-00		1	R6
26		1302411-00	511 1/4W 1% RN55D-F 100PPM		2	R7,R21
27		1302874-00	147 1/4W 1% RN55D-F 100PPM		1	
28		1302957-00	121 1/4W 1% RN55D-F 100PPM		1	

REVISION HISTORY VARIATIONS FOR THIS ASSY.

CHK	ECO NO	REV	DC,DD,DF,CC,CD,CF,AC
---	INIT	A	AD,AF,RC,BD,BF

FIRST USED ON: 11/34

DIGITAL EQUIPMENT CORPORATION
MAYNARD, MASSACHUSETTS

MADE BY: H. WEINBRENNER

DATE: 13-SEP-78

TITLE

PARTS LIST

CHECKED: R.V. MANION

DATE: 13-SEP-78

MS11-LD 128K X 18 MOS MEMORY

DSN, ENG. I P. GIVEN

DATE: 13-SEP-78

SIZE CODE: 1 DOCUMENT NUMBER 1 REV

PROD. I. P. SCHAFF

DATE: 13-SEP-78

K PL 1 M7891-DC-DBP

RESP. ENG. I. P. GIVEN

DATE: 13-SEP-78

ASSY. NO. 1 D-UA-M7891-0-0

EDIT: 6

THIS DRAWING AND SPECIFICATIONS HEREIN, ARE THE PROPERTY OF DIGITAL EQUIPMENT CORPORATION AND SHALL NOT BE REPRODUCED OR COPIED OR USED IN WHOLE OR IN PART AS THE BASIS FOR THE MANUFACTURE OR SALE OF ITEMS WITHOUT WRITTEN PERMISSION.

COPYRIGHT 1978, DIGITAL EQUIPMENT CORPORATION

LINE	ITEM	DOCUMENT NO.	PART NO.	DESCRIPTION	QTY	REFERENCE DESIGNATORS
29	29		1303110-00	19.6 1/4W 1% RN55D-F 100PPM (13-00)	1	R10
30	30		1303156-00	34.8 K 1/4W 1% RN55D-F 100PPM (13-00)	1	R5
31	31		1305123-00	215 1/4W 1% RN55D-F 100PPM (13-00)	1	R20
32	32		1305322-00	7.5 K 1/4W 1% RN55D-F 100PPM (13-00)	1	R4
33	33		1312466-00	10 1W 1% RN55D-F 100PPM (13-00)	1	R1
34	34		1315678-00	R NETWORK 3-18 OHM RESISTORS 5% SIP	16	R41-R56
35	35		1315339-00	R NETWORK 4-5K RESISTORS 5% SIP	7	R9,R22,R24-R27,R31
36	36		1613120-00	DELAY= 20NMS,10TAPS	1	E18
37	37		1910532-00	74S00 NAND GATE-QUAD 2IN9	3	E16,E46,E53
38	38		1910533-00	74S03 NAND GATE-QUAD 2IN,OPN COLLECT	1	E7
39	39		1910536-00	74S10 NAND GATE-TRIPLE 3IN	2	E28,E39
40	40		1910537-00	74S11 AND GATE-TRIPLE 3INPUT	2	E29,E44
41	41		1910539-00	74S20 NAND GATE-DUAL 4INPUT	1	E59
42	42		1910544-00	74S74 FF-D DUAL,EDGE TRIGGER	2	E33,E34
43	43		1910544-01	74S74-60GG-D DUAL,EDGE TRIGGER,SYNCHR	1	E6
44	44		1910549-00	74S158 MUX 1 OF 2 (QUAD)	2	E58,E65
45	45		1911469-00	DEC 8640 RECEIVER,BUS,QUAD,UNIBUS,0-BU	6	E48,E62,E25,E31,E37,E41
46	46		1911573-00	74S280 PARITY GEN/CHKR,9BIT ODD/EVEN	4	E42,E49,E56,E63
47	47		1911579-00	8641 TRANSCIEVER,BUS,QUAD,UNIBUS	6	E1,E3,E8,E13,E19,E55
48	48		1911675-00	74S138 DECODER-THREE INPUT	1	E51
49	49		1911944-00	555CN TIMER,FUNCT,BLOCK	1	E5
50	50		1911983-00	74S133 NAND GATE-POSITIVE 13IN	1	E45
51	51		1912048-02	DEC 7812-02 VOLT.REG.FIX 112V 1.5A T	1	Q2
52	52		1912388-00	74S02 NOR GATE-QUAD 2IN,POS	1	E30
53	53		1912389-00	74S08 AND GATE-QUAD 2IN,POS	2	E22,E23
54	54		1912541-00	VOLT.REG.FIX -5V .02A	1	Q1
55	55		1912746-00	DEC 74S37 NAND GATE-QUAD 2IN	1	E12
56	56		1912807-00	LS10 NAND GATE-TRIPLE 3IN	2	E11,E40
57	57		1912828-00	LS85 COMPARATOR,4BIT MAGNITUDE	1	E54
58	58		1912853-00	LS175 FF-D QUAD	2	E10,E15
59	59		1912867-00	LS298 MUX 1 OF 4,2IN W/STORAGE	2	E21,E27
60	60		1913340-00	74S32 OR GATE-QUAD 2IN	2	E35,E36
61	61		1913462-00	OCTAL BUFFER,INVERTING TRI-STA	1	E52
62	62		1913670-00	74S373 LATCH 8BIT TRASP TRISTATE	2	E50,E57,E64
63	63		1913777-00	LS240 DRIVER,LINE,OCTAL,TRI-ST	9	E24,E68,E69,E86,E119,E136,
					1	E169,E186,E203
64	64		1914086-00	74S30 NAND GATE-POS 8IN	CONT	E60
65	65		1914451-00	74LS393 COUNTER,BINARY,4BIT	1	E43
66	66		1915193-00	LS244 DRIVER,LINE,OCTAL,TRI-ST	1	E17
67	67		1915219-00	LS373 FF-D OCTAL-TRANSPARENT	8	E2,E4,E9,E14,E20,E26,E32,E38
68	68		23249F1-00	F1-01 PROM, 1	1	E67
69	69		23468A2-00	A2-05 PROM, 1	1	E66
70	70		7414765-00	HEATSINK	1	
71	71		9000024-01	FYFLET, ROLLED FLANGE, .121 OD X .196 LG	12	
72	72		9010092-00	SCREW,PAN,PHIL, 4-40X 5/16 SS	1	
73	73		9007201-00	TRANSIPADS #10253	1	
74	74		9009149-00	PIN, STAKING, P.C. BOARD, .025 X .025	1	
75	75		9009185-00	JUMPER, WIRE, INSULATED, BLACK BAND	5	

DIGITAL EQUIPMENT CORPORATION
MAYNARD, MASSACHUSETTS

PARTS LIST
MS11-LD 128K X 18 MOS MEMORY

SIZE CODE DOCUMENT NUMBER REV
K PL M789J-DC-DBP 1A

AUTOMATED BY PRIST 2F(3)

P A R T S L I S T

SHEET 3 OF 3

LINE ITEM DOCUMENT NO.

PART NO.

DESCRIPTION

QTY REFERENCE DESIGNATORS

76	76	1109991-00	1N 754A VZE 6.8 5% .40W	1	D5
77	77	1105275-00	***** THIS ITEM IS NOT USED *****	1	F2
78	78	1210929-04	FUSE, SUB-MINI .250A, 125V, AXIAL LEAD	144	E70-E85, E120-E135, E170-E185,
79	79	2114408-01	16K MOS RAY 200NS 16PIN DYNA	CONT	E87-E118, E137-E168, E187-E202,
80	80	1301969-00	22 1/4W 5% CC (13-00	1	E204-E219
				R34	

81 NOTE: M7891-DA IS A PRIMARY VARIATION OF THE 128K X 18 BIT SYSTEM (NOT A MODULE TYPE).
82 NOTE: M7891-DC IS A MODULE TYPE USING FUJITSU 16K MOS DEVICES.
83 NOTE: 1912048-05 MAY BE SUBSTITUTED FOR ITEM 51 PART #1912048-02.

TITLE	PARTS LIST	SIZE/	CODE	DOCUMENT NUMBER	REV
DIGITAL EQUIPMENT CORPORATION	MS11-LD 128K X 18 MOS MEMORY	K	PL	M7891-DC-DBP	A
MAYNARD, MASSACHUSETTS					