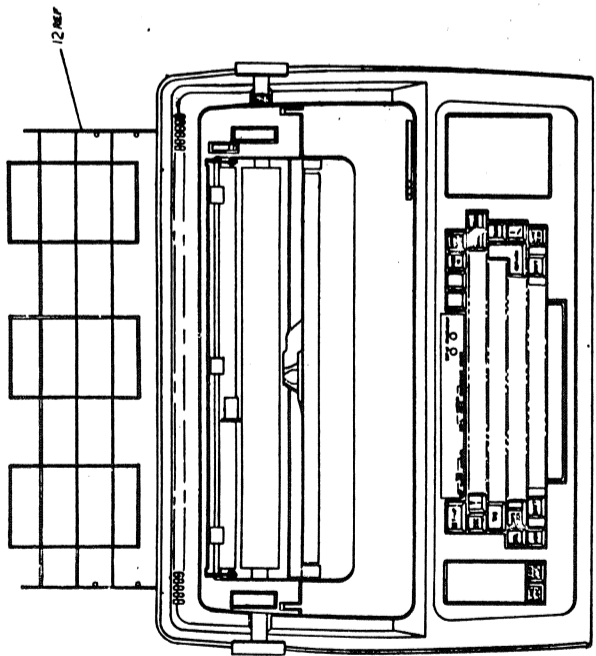


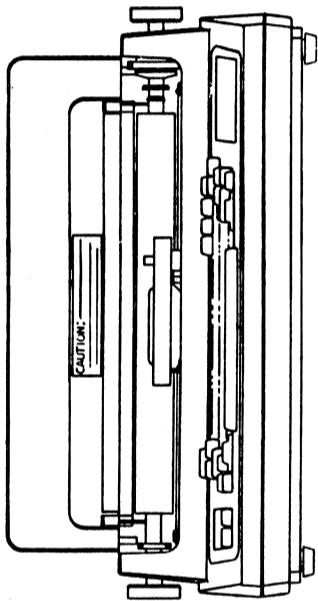
B-DD-5414387-0	ROM EXPANDER BOARD
D-UA-5414387-0	ROM EXPANDER BOARD
K-PL-5414387-0-DBP	ROM EXPANDER BOARD
D-CS-5414387-0	ROM EXPANDER BOARD
B-PL-7017627-0-0	LA34/LA38 USER KIT ASSY

TITLE	LA34 UNIT ASSEMBLY	SHEET 2 OF 2	SIZECODE	B	TC	NUMBER	IA34-0-1	REV	C
-------	--------------------	--------------	----------	---	----	--------	----------	-----	---

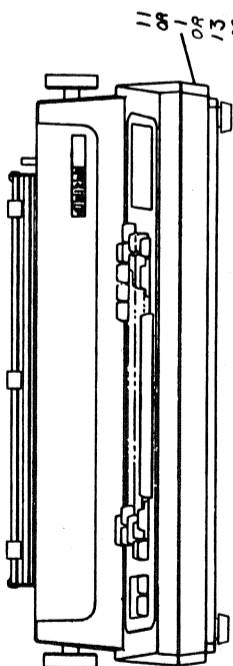
NOTES:
 1. FOR INTERCONNECTION DIAGRAM REFER TO B-12-L254-9-E.
 2. MOVE CARRIAGE TO LEFT HAND STOP. SECURE WITH CABLE TIE. ITEM # 3. PRINTED CAUTION LABEL IS TO BE PLACED SECURELY TO THE CABLE TIE.
 3. PLACE AC POWER CORD ITEM # 2. POWER REQUIREMENT LABEL, ITEM # 1. IN THE PACKAGE PER PACKING INSTRUCTIONS ITEM # 5.
 4. ITEM 12, PAPER CATCHER IS OPTIONAL.
 5. ITEM 13, PAPER CATCHER LABEL, IS REFERENCED ON THE PACKAGE INSTRUCTION, 09-2786-02-9.



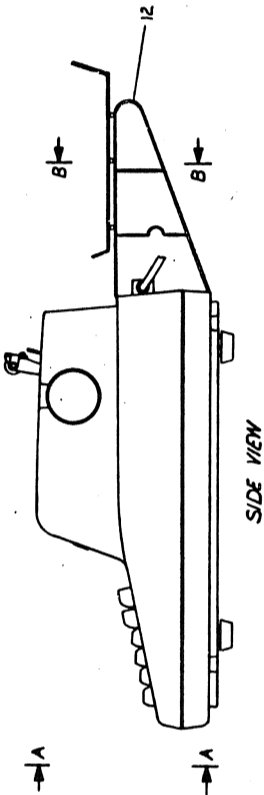
TOP VIEW



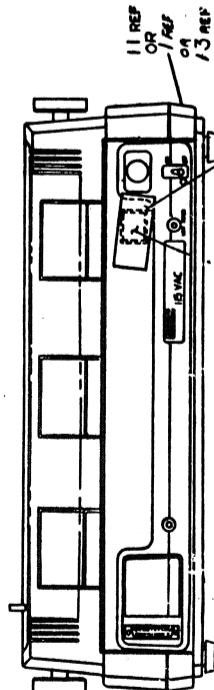
VIEW A-A
 VIEW SHOWN WITH ACCESS COVER RAISED



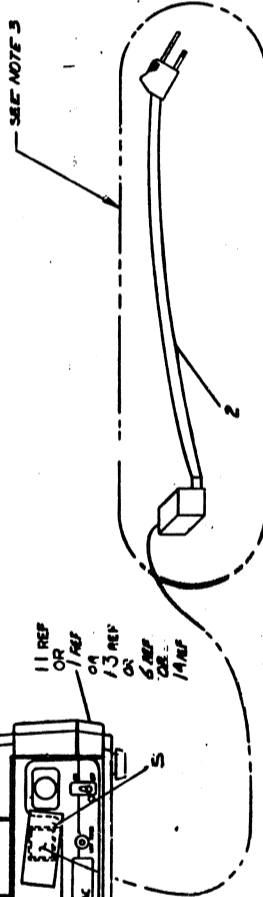
FRONT VIEW



SIDE VIEW



VIEW B-B



SEE NOTE 3

FOR PARTS LIST SEE K-PL-LA34-9-08P

ITEM NO.	DESCRIPTION	QTY	UNIT
1	POWER REQUIREMENT LABEL	1	EA
2	AC POWER CORD	1	EA
3	CABLE TIE	1	EA
4	PRINTED CAUTION LABEL	1	EA
5	PAPER CATCHER	1	EA
6	PAPER CATCHER LABEL	1	EA
7	12 REF	12	EA
8	11 REF	11	EA
9	12 REF	12	EA
10	13 REF	13	EA
11	14 REF	14	EA
12	15 REF	15	EA
13	16 REF	16	EA
14	17 REF	17	EA
15	18 REF	18	EA

LA34 UNIT ASSY

SEE K-PL

REV	DATE	DESCRIPTION
1	11/15/54	INITIAL DESIGN
2	12/15/54	DESIGN CHANGES
3	1/15/55	DESIGN CHANGES
4	2/15/55	DESIGN CHANGES
5	3/15/55	DESIGN CHANGES
6	4/15/55	DESIGN CHANGES
7	5/15/55	DESIGN CHANGES
8	6/15/55	DESIGN CHANGES
9	7/15/55	DESIGN CHANGES
10	8/15/55	DESIGN CHANGES
11	9/15/55	DESIGN CHANGES
12	10/15/55	DESIGN CHANGES
13	11/15/55	DESIGN CHANGES
14	12/15/55	DESIGN CHANGES
15	1/15/56	DESIGN CHANGES
16	2/15/56	DESIGN CHANGES
17	3/15/56	DESIGN CHANGES
18	4/15/56	DESIGN CHANGES
19	5/15/56	DESIGN CHANGES
20	6/15/56	DESIGN CHANGES
21	7/15/56	DESIGN CHANGES
22	8/15/56	DESIGN CHANGES
23	9/15/56	DESIGN CHANGES
24	10/15/56	DESIGN CHANGES
25	11/15/56	DESIGN CHANGES
26	12/15/56	DESIGN CHANGES
27	1/15/57	DESIGN CHANGES
28	2/15/57	DESIGN CHANGES
29	3/15/57	DESIGN CHANGES
30	4/15/57	DESIGN CHANGES
31	5/15/57	DESIGN CHANGES
32	6/15/57	DESIGN CHANGES
33	7/15/57	DESIGN CHANGES
34	8/15/57	DESIGN CHANGES
35	9/15/57	DESIGN CHANGES
36	10/15/57	DESIGN CHANGES
37	11/15/57	DESIGN CHANGES
38	12/15/57	DESIGN CHANGES
39	1/15/58	DESIGN CHANGES
40	2/15/58	DESIGN CHANGES
41	3/15/58	DESIGN CHANGES
42	4/15/58	DESIGN CHANGES
43	5/15/58	DESIGN CHANGES
44	6/15/58	DESIGN CHANGES
45	7/15/58	DESIGN CHANGES
46	8/15/58	DESIGN CHANGES
47	9/15/58	DESIGN CHANGES
48	10/15/58	DESIGN CHANGES
49	11/15/58	DESIGN CHANGES
50	12/15/58	DESIGN CHANGES

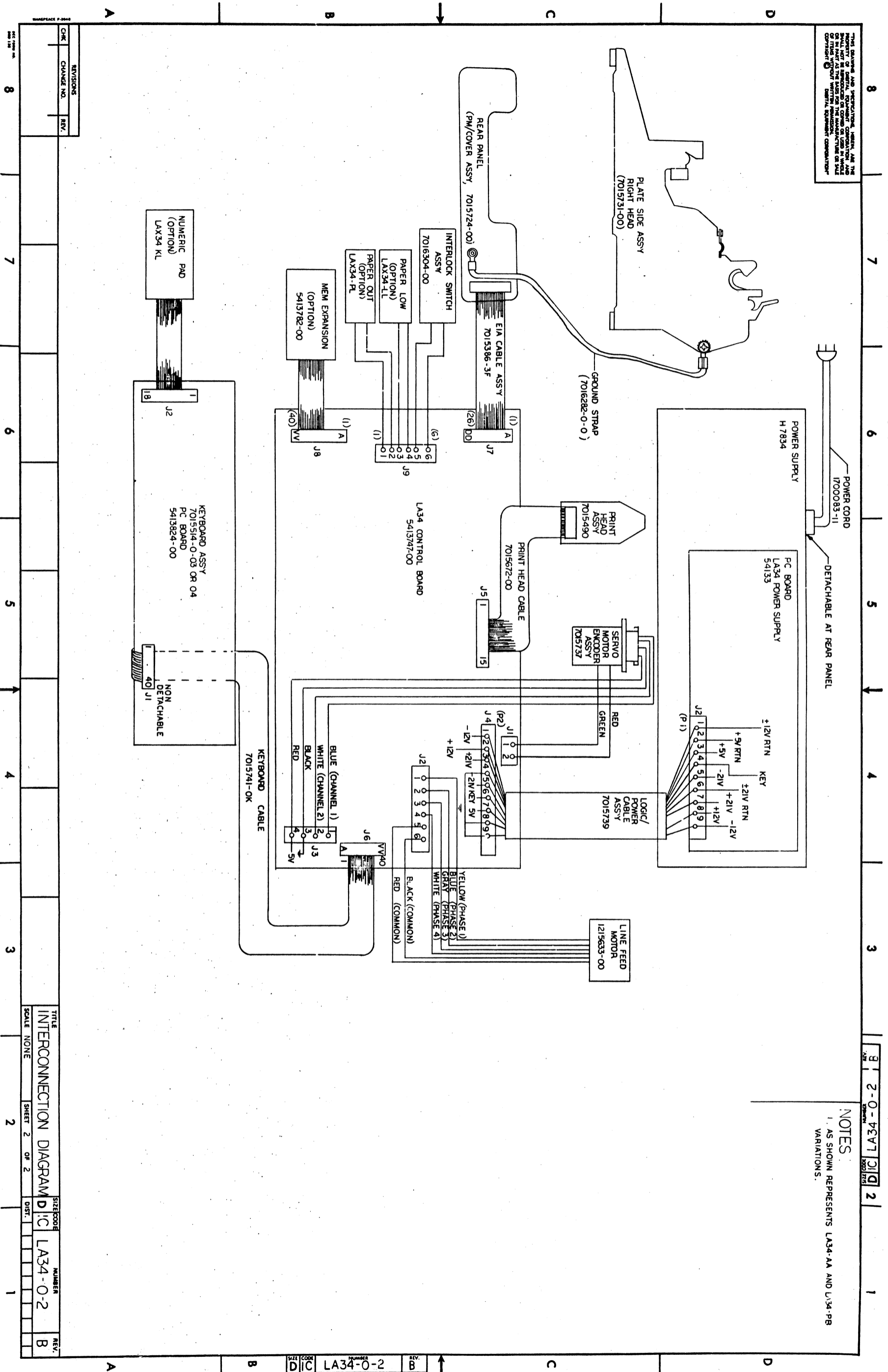
LINE ITEM	DOCUMENT NUMBER	PART NUMBER	DESCRIPTION	DA	PA	JA	AA	PB
1	E-AD-7015724-0-0	7015724-00	PRINTER MECH/COVER ASSY	1	-	-	-	-
2	B-PL-7017627-0-0	7017627-DA	USER'S KIT ASSY, (LA34-DA)	1	-	-	-	-
3		9007032-00	TIE,CABLE BUNDL,DIA 0-1-3/4**=101	1	1	1	1	1
4	B-PL-7017627-0-0	7017627-PA	USER'S KIT ASSY, (LA34-PA)	-	-	-	-	-
5	B-PL-7017627-0-0	7017627-JA	USER'S KIT ASSY, (LA34-JA)	-	-	-	-	-
6	E-AD-7015724-0-0	7015724-03	PRINTER MECH COVER ASSY LA34	-	-	-	-	-
7	B-PL-7017627-0-0	7017627-AA	USER'S KIT ASSY, (LA34-AA)	-	-	-	-	-
8	A-SP-3700392-0-0	3700392-00	INSTR PKG PRINTER,LA34 DECRYPTER	1	1	1	1	1
9	D-IC-LA34-0-2		DIAGRAM, INTERCONNECTION	REF	REF	REF	REF	REF
10	B-PL-7017627-0-0	7017627-PB	USER'S KIT ASSY, (LA34-PB)	-	-	-	-	-
11	E-AD-7015724-0-0	7015724-01	PRINTER MECH/COVER ASSY (DARK)	-	1	-	-	-
12	D-IA-7423841-0-0	7423841-00	PAPER CATCHER	A/R	A/R	A/R	A/R	A/R
13	E-AD-7015724-0-0	7015724-02	PRINTER MECH/COVER ASSY, JA	-	-	1	-	-
14	E-AD-7015724-0-0	7015724-04	PRINTER MECH COVER ASSY	-	-	-	-	1

IS NOTE: 1 ITEM NUMBER 12 PAPER CATCHER IS OPTIONAL.

REVISION HISTORY	BASIC PART NO	U/LA34	DRN	D, PUDELKO	DATE	21-FEB-80	TITLE	LA34 UNIT ASSY.	DOCUMENT NUMBER	KEY
ENG: ECO NUMBER	REV	SECTION A OF A	CHKID	D HEALY	DATE	21-FEB-80				
INITIAL	ID	SECTION, VARIATION INDEX								
LA34-PN070	D	DA,PA,JA,AA,PB								
LA34-PN071	E									
LA34-PN072	F	(B)	DES,ENG, R COURTEMANCHE	DATE	21-FEB-80					
LA34-PN073	H									
LA34-PN081	J	(C)	RESP,ENG, R COURTEMANCHE	DATE	21-FEB-80					
		(D)								
		(E)	MFG,ENG, L MION	DATE	21-FEB-80					
		(F)	ASSEMBLY NUMBER:	TOP DOCUMENT NUMBER:						
			E-UA-LA34-0-0	B-DD-LA34-0-0						

* THIS DRAWING AND SPECIFICATIONS HEREIN, ARE THE PROPERTY OF DIGITAL EQUIPMENT CORPORATION AND SHALL NOT BE REPRODUCED OR COPIED OR USED IN WHOLE OR IN PART AS THE BASIS FOR THE MANUFACTURE OR SALE OF ITEMS WITHOUT WRITTEN PERMISSION. COPYRIGHT (C) 1981, DIGITAL EQUIPMENT CORPORATION *

THIS DRAWING AND SPECIFICATIONS, WHEN AS SHOWN, ARE THE PROPERTY OF IBM. REPAIRMENT, RECONSTRUCTION, AND MODIFICATION OF THIS EQUIPMENT SHALL BE MADE IN ACCORDANCE WITH THE ORIGINAL DESIGN AND CONSTRUCTION. ANY CHANGES TO THIS DRAWING SHALL BE MADE IN ACCORDANCE WITH THE ORIGINAL DESIGN AND CONSTRUCTION.



NOTES:
1. AS SHOWN REPRESENTS LA34-AA AND LA34-PB VARIATIONS.

REVISIONS	
CHK	REV.

TITLE	INTERCONNECTION DIAGRAM	SIZE CODE	DIC	LA34-0-2	NUMBER		REV.	
SCALE	NONE	SHEET	2	OF	2	DIST.		

LA34-0-2
D I C