

NOTES: 1. DO NOT INSTALL & EXCEED IN HANDLE H HOLES
 IN DISCRETE
 WORK INSTRUCTIONS EGG
 COMPONENT DELETE SIDE 1
 L-2 P66 (PIN 300439)
 COMPONENT ADDS SIDE 1:
 R-3 R66 (PIN 303177) (CONT. ON SHEET 404)

CHK	CHANGE NO	REV	DATE	BY	REVISION
2	6066-1	C		H. LAB	
2	6066-2	D		H. LAB	
2	6066-3	E		H. LAB	

CHK	CHANGE NO	REV	DATE	BY	REVISION
2	6066-1	C		H. LAB	
2	6066-2	D		H. LAB	
2	6066-3	E		H. LAB	

CHK	CHANGE NO	REV	DATE	BY	REVISION
2	6066-1	C		H. LAB	
2	6066-2	D		H. LAB	
2	6066-3	E		H. LAB	

SIGNATURES	DATE	TITLE
DR. S. M. ...	5/27/72	digital
PROJ. ENG. ...	5/27/72	9TK TUG
SCALE 1 OF 4		READ AMP

DIGITAL EQUIPMENT CORPORATION

PARTS LIST

MADE BY DAVID BEAUREGARD
 DATE 15 Oct 76
 ENG H. K. ...
 DATE 11. 23. 76

CHECKED *J. ...*
 DATE 18 Oct '76
 PROD *...*
 DATE 23 Nov '76

SECTION 1
 ISSUED SECTION 1

QUANTITY / VARIATION

NOTES:

USED ON OPTION/MODEL
 TU16 J

ITEM NO.	DRAWING NO.	PART NO.	DESCRIPTION	REF	QUANTITY	VARIATION	REF DESIGNATION
1	D-CS-G066-0-1		CIRCUIT SCHEMATIC	REF			E17
2	B-DD-G066-0		DWG DIRECTORY	REF			E25, E29, E36
3	D-UA-G066-0-0		UNIT ASSEMBLY	REF			E27
4	D-MD-5012235-0-0	5012235	ETCHED CIRCUIT BOARD	1			E4, E10, E18, E24, E33, E39, E46, E52, E58
5		19-13293-00	IC 74156	1			E3, E6, E9, E13, E16, E20, E28, E23, E32, E38, E35, E42, E45, E48, E51, E54, E57, E61
6		19-10537-00	IC 74511	3			E1, E5, E14, E19, E30, E34, E43, E47, E55
7		19-12107-00	IC LM324	1			E2, E15, E31, E44, E56
8		19-10644-00	IC 733	9			E8, E22, E41, E50, E60
9		19-10735-02	IC 318	18			E7, E21, E37, E49, E59
10		19-05620-01	IC 710	9			E12, E11, E40, E53
11		19-12108-00	IC LM339	5			E26
12		19-05575-00	IC DEC7400	5			D1
13		19-05585-00	IC 7476	5			D2, D5, D6, D9, D10, D13, D14, D17, D18, D21, D22, D24, D25, D29, D30, D33, D34, D37
14		19-09686-00	IC 7404	4			L1 thru L18
		19-10011-00	IC DEC7486	1			
		11-13295-00	DIODE 3.0V ZENER (1.4372A)	1			
		11-00114-00	DIODE D664	18			
		16-02723-00	CHOKE 1 MH	18			

100001
 00002
 00003

THIS DRAWING AND SPECIFICATIONS, HEREIN, ARE THE PROPERTY OF DIGITAL EQUIPMENT CORPORATION AND SHALL NOT BE REPRODUCED OR COPIED OR USED IN WHOLE OR IN PART AS THE BASIS FOR THE MANUFACTURE OR SALE OF ITEMS WITHOUT WRITTEN PERMISSION. COPYRIGHT © 1976 DIGITAL EQUIPMENT CORPORATION.

EN-01140A-16-R276(326) DRB 125

TITLE: 9 TK TU16 READ AMP

ASSY NO. D-49-G066-0-0 SHEET 1 OF 4

SIZE CODE B PL NUMBER G066-0-0 REV. E

INSERTION PARTS LIST DATA BASE REV

DIGITAL EQUIPMENT CORPORATION

PARTS LIST

MADE BY D. BEAUFEGARD
 DATE 15 Oct 76
 ENG H Fin...
 DATE 11.23.76

CHECKED P. Bauman
 DATE 18 Oct 76
 PROD Gordon R. ...
 DATE 23 Nov '76

SECTION 1
 ISSUED SECTION 1

ITEM NO.	DRAWING NO.	PART NO.	DESCRIPTION	QUANTITY / VARIATION								NOTES:
15		10-04812-00	CAP 15 MF 20V, 10% TANT	19								C164, C10 thru C18, C100 thru 108
16		10-02431-00	CAP 2.2 UF 35V, 10% TANT	18								C19 thru C36
17		10-05820-00	CAP. 22PF 109V 5%	18								C166-C183 (IN PARALLEL WITH R19 thru R29, R30, R31 thru R36)
18		10-10274-01	CAP .22 UF 50V	57								C37 thru C72, C118 thru C134, C144, C110, C112, C114
19		10-00026-00	CAP 680PF 100V 5%	18								C135 thru C138, C140 thru C143, C145 thru C154
20		10-02608-00	CAP 18 PF 100V 5%	9								C73 thru C81
21		10-05116-00	CAP 3300 PF 200V 10%	9								C1 thru C9
22		10-13292-00	CAP 1800 PF 100V 10%	9								C155 thru C163
23		10-01796-00	CAP 50 UF 25V	3								C11, C109, C113
24		10-01774-00	CAP .05 UF 25V DISC	5								C115 thru C117, C139, C165
25		13-01177-00	RES 82 1/2W 5%	18								R234, R237, R260, R263, R266
26		13-00247-00	RES 120 1/2W 5%	18								R92 thru 100, R227 thru R235
27		13-00271-00	RES 220 1/2W 5%	18								R102, R107, R108, R112, R113, R117, R118, R122, R123, R127, R128, R132, R133, R137, R138, R142, R143
28		13-01424-00	RES 680 1/2W 5%	1								R147
29		13-00365-00	RES 1K 1/2W 5%	10								R85, R101, R212, R214, R216, R218, R220, R222, R224, R226
30		13-01320-00	RES 1.2K 1/2W 5%	18								R174 thru R191
31		13-01401-00	RES 750 1/2W 5%	18								R1 thru R18

QUANTITY / VARIATION

NOTES:

USED ON OPTION/MODEL TUI6J

REF DESIGNATION

C164, C10 thru C18, C100 thru 108
 C19 thru C36
 C166-C183 (IN PARALLEL WITH R19 thru R29, R30, R31 thru R36)
 C37 thru C72, C118 thru C134, C144, C110, C112, C114
 C135 thru C138, C140 thru C143, C145 thru C154
 C73 thru C81
 C1 thru C9
 C155 thru C163
 C11, C109, C113
 C115 thru C117, C139, C165
~~R234, R237, R260, R263, R266~~
 R92 thru 100, R227 thru R235
 R102, R107, R108, R112, R113, R117, R118, R122, R123, R127, R128, R132, R133, R137, R138, R142, R143
 R147
 R85, R101, R212, R214, R216, R218, R220, R222, R224, R226
 R174 thru R191
 R1 thru R18

THIS DRAWING AND SPECIFICATIONS, HEREIN, ARE THE PROPERTY OF DIGITAL EQUIPMENT CORPORATION AND SHALL NOT BE REPRODUCED OR COPIED OR USED IN WHOLE OR IN PART AS THE BASIS FOR THE MANUFACTURE OR SALE OF ITEMS WITHOUT WRITTEN PERMISSION. COPYRIGHT © 1976 DIGITAL EQUIPMENT CORPORATION.

EN-01140A-16-R276(325) DRB 125

TITLE
 9 TK TUI6
 READ AMP

ASSY NO.
 D-4A-5066-0-0
 SHEET 2 OF 4

SIZE CODE NUMBER REV.
 B PL G066-0-0 E
 INSERTION PARTS LIST DATA BASE REV 0

DIGITAL EQUIPMENT CORPORATION

PARTS LIST

MADE BY DAVID BEAUREGARD
 DATE 15 Oct 76
 ENG H. Funderlin
 DATE 11. 23. 76

CHECKED P. Bossman
 DATE 18 Oct 76
 PROD *Andrew J. Holland*
 DATE 23 Nov '76

SECTION 1
 ISSUED SECTION 1

QUANTITY / VARIATION

NOTES:

USED ON OPTION/MODEL
 TU16 J

REF DESIGNATION

ITEM NO.	DRAWING NO.	PART NO.	DESCRIPTION	QUANTITY	VARIATION	REF DESIGNATION
32		13-02388-00	RES 2K 1/4W 5%	18		R192 thru R209
33		13-03177-00	RES 2.4K 1/4W 5%	1		R66
34		13-00447-00	RES 4.7K 1/4W 5%	1		R70
35		13-13349-00	RES 33K 1/4 10%	18		R19 thru R29, R30, R31 thru R36
36		13-00447-00	RES 4.7K 1/4W 5%	1		R70
37		13-00479-00	RES 10K 1/4W 5%	12		R71 thru R81, R90
38		13-01775-00	RES 820 5%	18		R89, R157 thru R173
39		13-01317-00	RES 10 1/4W 5%	2		R69, R37
40		13-09143-08	RES -2K POT	9		R56 thru R63, R86
41		13-03179-00	RES 8.2K 1/4W 5%	9		R38 thru R46
42		12-13335-00	CONNECTOR, 20 PIN	1		J1
43		13-00295-00	RES 330 1/4W 5%	19		R47, R88, R91, R106, R111, R116, R120, R126, R131, R136, R141, R146, R246, R250, R253, R256, R259, R262, R265
44		13-00391-00	RES 1.5K 1/4W 5%	1		R65
45		13-00444-00	RES 3.9K 1/4W 5%	1		R67
46		13-02177-00	RES 47K 1/4W 5%	1		R68
47		90-06737-00	EYELET	10		
48		12-10711-05	HANDLE, HEX	1		
49		9009185	JUMPER WIRE	45		W1 thru W45

ECO. NO. _____

THIS DRAWING AND SPECIFICATIONS, HEREIN, ARE THE PROPERTY OF DIGITAL EQUIPMENT CORPORATION AND SHALL NOT BE REPRODUCED OR COPIED OR USED IN WHOLE OR IN PART AS THE BASIS FOR THE MANUFACTURE OR SALE OF ITEMS WITHOUT WRITTEN PERMISSION. COPYRIGHT © 1976 DIGITAL EQUIPMENT CORPORATION.

EN-011402-16-6276-859 DRB 125

ASSY NO. D-VA-G066-0-0 SHEET 3 OF 4 SIZE B PL CODE PL NUMBER G066-0-0 REV. 1

DIGITAL EQUIPMENT CORPORATION PARTS LIST

MADE BY D. BEAUREGARD DATE 15 OCT 76	CHECKED P. BOSSMAN DATE 18 OCT 76	SECTION 1
ENG H. FINDEISEN DATE 11-23-76	PROD GORDON R. DILLARD DATE 23 NOV 76	ISSUED SECTION 1

QUANTITY / VARIATION

ITEM NO.	DRAWING NO.	PART NO.	DESCRIPTION	9	1	1	1	1	1	1	1	1	1	1	1	1	1	1	
50		13-02748-00	RBS 1.0K 1/8W 1%																
51		13-05430-00	RBS 9.1K 1/4W																

NOTES:

USED ON OPTION/MODEL TU16J

REF DESIGNATION

R148 thru R156
R64

E.C.O. NO. _____

"THIS DRAWING AND SPECIFICATIONS, HEREIN, ARE THE PROPERTY OF DIGITAL EQUIPMENT CORPORATION AND SHALL NOT BE REPRODUCED OR COPIED OR USED IN WHOLE OR IN PART AS THE BASIS FOR THE MANUFACTURE OR SALE OF ITEMS WITHOUT WRITTEN PERMISSION. COPYRIGHT © 1976 DIGITAL EQUIPMENT CORPORATION"

TITLE

9 TK TU16
READ AMP

ASSY NO.

D-UA-G066-0-0

SIZE

B

CODE

PL

NUMBER

G066-0-0

REV.

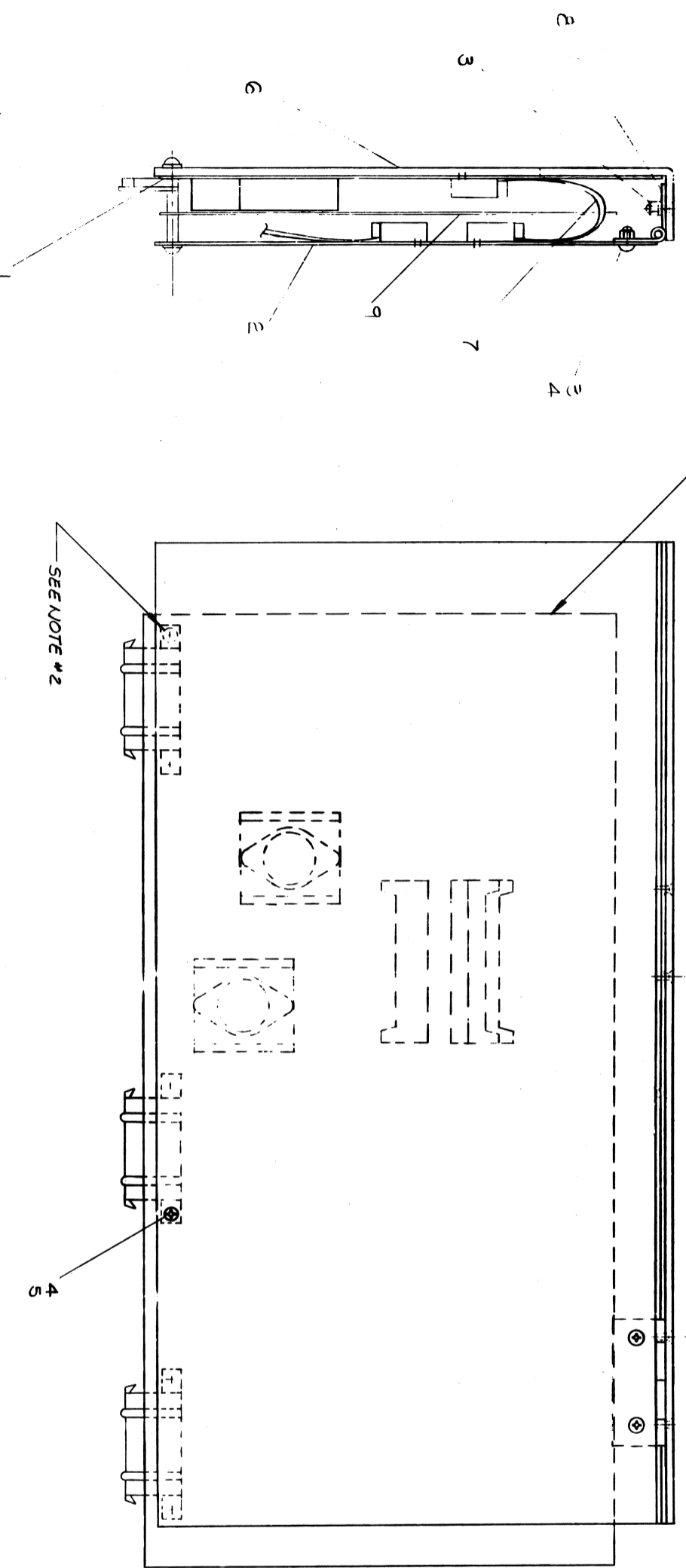
E

SHEET 4 OF 4

INSERTION PARTS LIST DATA BASE REV B

THIS DRAWING AND SPECIFICATIONS, HEREIN, ARE THE PROPERTY OF THE ARMY, GOVERNMENT CONTRACTORS, AND ARE TO BE KEPT IN THE CONFIDENTIAL AND UNCLASSIFIED STATUS OF THE ORIGINAL DRAWING. IT IS TO BE KEPT UNCLASSIFIED AND CONFIDENTIAL UNLESS SPECIFICALLY NOTED OTHERWISE.

8 7 6 5 4 3 2 1



SEE NOTE #1

SEE NOTE #2

NOTES:
 1. DOTTED LINES SHOW WHERE ELECTROMAG (STATIC) SHIELD SHOULD BE POSITIONED.
 2. NOTE THAT THE HOLE IN THE SHIELD SLIPS OVER THE STANDOFF.

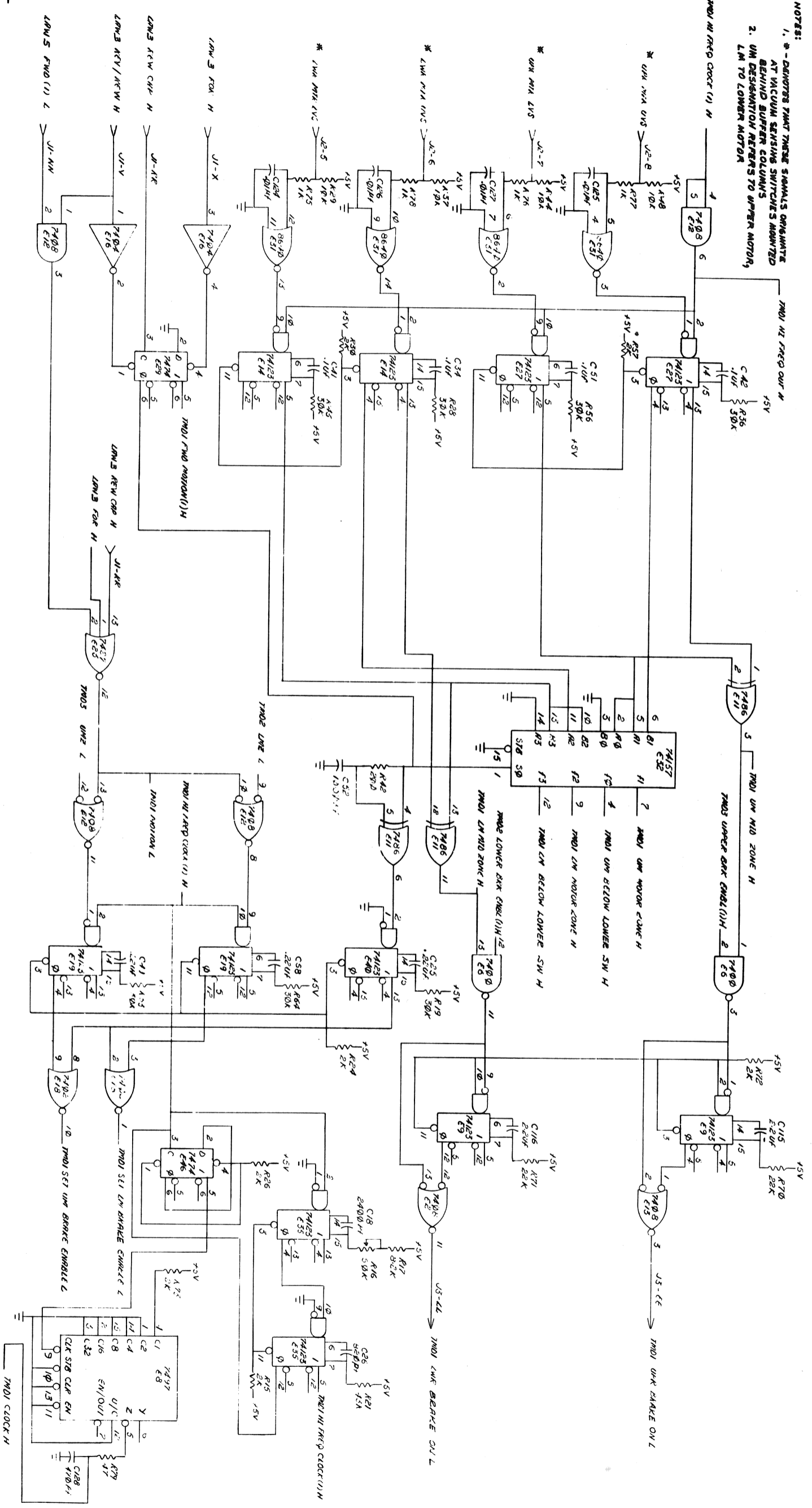
REVISIONS		
CHK	CHANGE NO.	REV.
H/7	H607-00001	A
H.D.RAB		
H Draw (Sheet) 7477		

ITEM NO.	DESCRIPTION	QTY	UNIT	ITEM NO.	DESCRIPTION	QTY	UNIT
1	SHIELD STATIC (REWORK)	1	EA	1	TAPE MOTION PWR BD ASSY	1	EA
2	HINGE	2	EA	2	TAPE MOTION PWR BD ASSY	1	EA
3	CABLE JUMPER	1	EA	3	TAPE MOTION PWR BD ASSY	1	EA
4	BF SOCKET SERVO BOARD	1	EA	4	TAPE MOTION PWR BD ASSY	1	EA
5	D-1A-7411390-00	1	EA	5	TAPE MOTION PWR BD ASSY	1	EA
6	WASHER INT TOOTH LOCK W/	1	EA	6	TAPE MOTION PWR BD ASSY	1	EA
7	9006632-00	1	EA	7	TAPE MOTION PWR BD ASSY	1	EA
8	SCREW PAN-HD (4-40 X .25)	1	EA	8	TAPE MOTION PWR BD ASSY	1	EA
9	9008301-01	1	EA	9	TAPE MOTION PWR BD ASSY	1	EA
10	9006557-00	1	EA	10	TAPE MOTION PWR BD ASSY	1	EA

REV. A
 H607-0-0

THIS DRAWING AND SPECIFICATIONS, SERIAL AND JOB NO. PROPERTY OF BELL & HOWELL COMPANY. IT IS TO BE KEPT IN CONFIDENCE AND NOT TO BE REPRODUCED OR TRANSMITTED IN ANY FORM OR BY ANY MEANS, ELECTRONIC, MECHANICAL, PHOTOCOPYING, RECORDING, OR BY ANY INFORMATION STORAGE AND RETRIEVAL SYSTEM, WITHOUT THE WRITTEN PERMISSION OF BELL & HOWELL COMPANY.

- NOTES:
- * - DEMONSTRATES THAT THESE SIGNALS ORGANIZE AT VACUUM SWITCHES ORGANIZED BEHIND BUFFER COLUMNS
 - UN DESIGNATION REFERS TO UPPER MOTOR, LM TO LOWER MOTOR



REV.	CHANGE NO.	REVISIONS

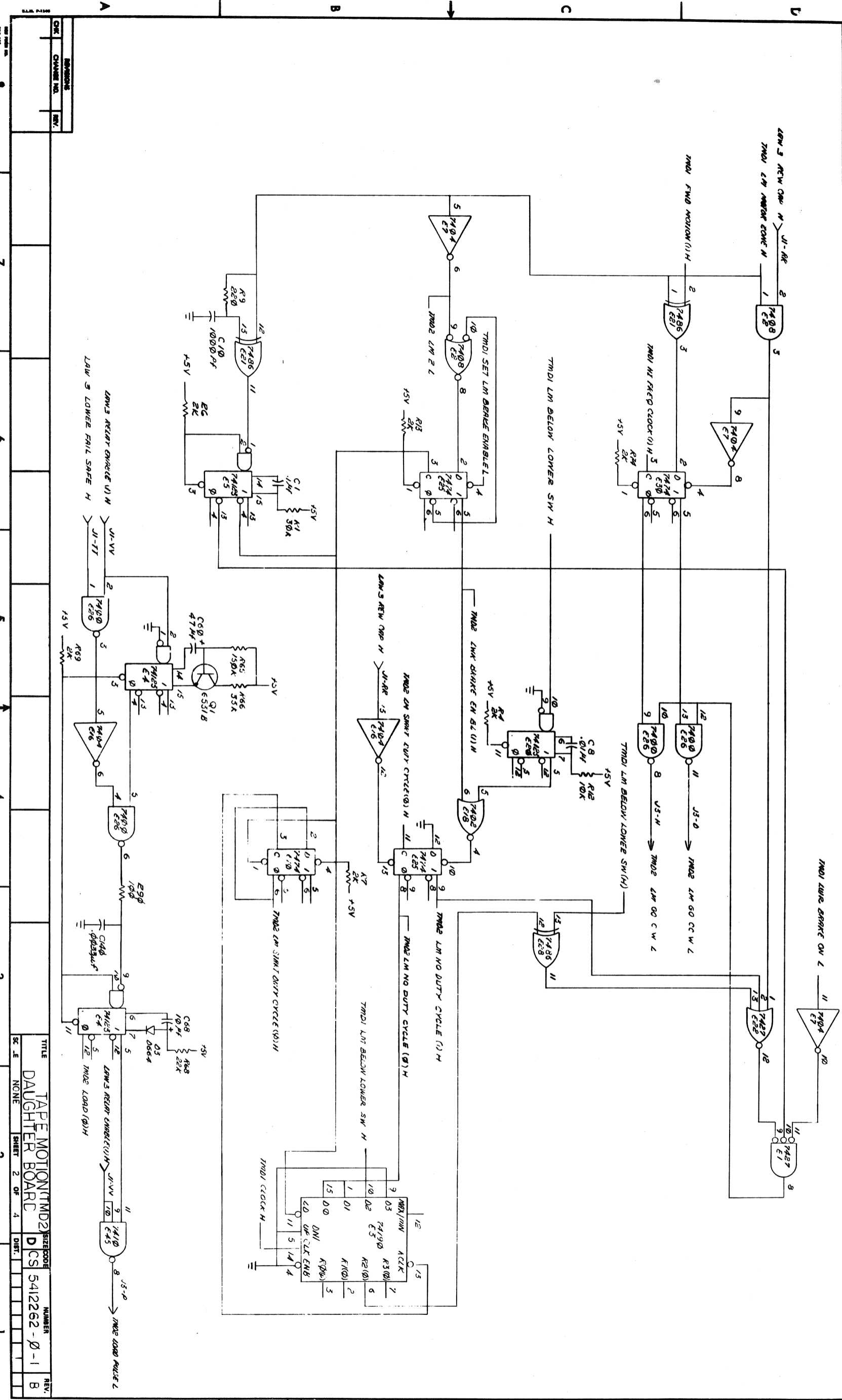
REV.	NUMBER	SIZE	CODE

REV.	NUMBER	SIZE	CODE

DAUGHTER BOARD

5412262-01

THIS DRAWING IS THE PROPERTY OF THE COMPANY AND IS NOT TO BE REPRODUCED OR TRANSMITTED IN ANY FORM OR BY ANY MEANS, ELECTRONIC OR MECHANICAL, INCLUDING PHOTOCOPYING, RECORDING, OR BY ANY INFORMATION STORAGE AND RETRIEVAL SYSTEM, WITHOUT THE WRITTEN PERMISSION OF THE COMPANY.



REV.	NO.	DATE

REV.	NO.	DATE

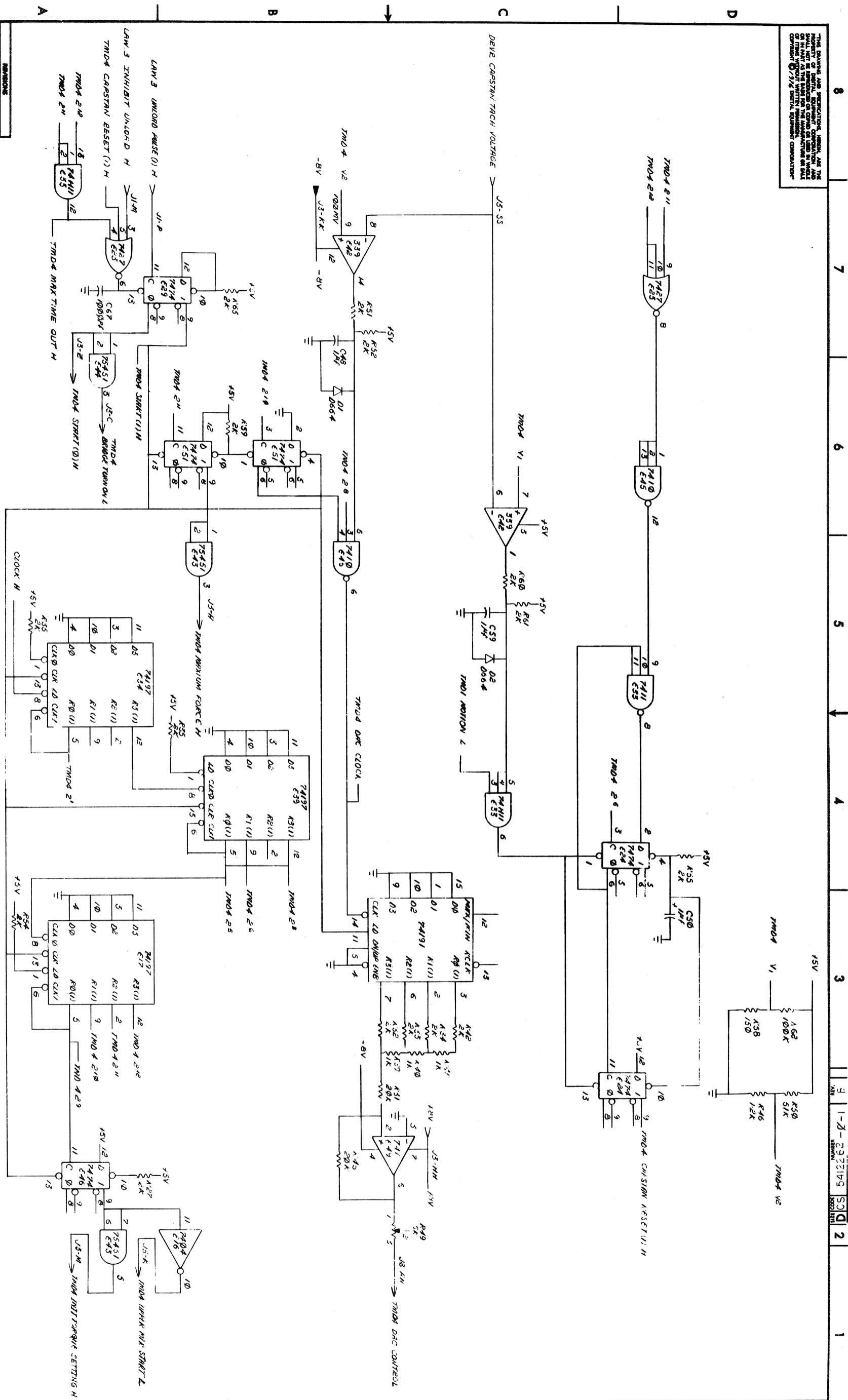
TITLE	DAUGHTER BOARD
REV.	
NO.	
DATE	

REV.	NO.	DATE

REV. E NUMBER 5412262-0-1

1-2-2922195 SQD 2

THIS DRAWING AND SPECIFICATIONS HEREBY ARE THE PROPERTY OF THE COMPANY AND ARE NOT TO BE REPRODUCED OR COPIED IN WHOLE OR IN PART WITHOUT WRITTEN PERMISSION OF THE COMPANY. © 1974 SHERITT EQUIPMENT CORPORATION.



REV.	DESCRIPTION
1	INITIAL
2	REVISED
3	REVISED
4	REVISED
5	REVISED
6	REVISED
7	REVISED
8	REVISED

8	7	6	5	4	3	2	1
---	---	---	---	---	---	---	---

REV.	8
NO.	5
SIZE	CODE
NUMBER	5412262-0-1
REV.	E
DATE	1-2-74
BY	J. J. J.
CHECKED	J. J. J.
APPROVED	J. J. J.
TITLE	TAPE MOTION (TMD) DAUGHTER BOARD
SCALE	NONE
SHEET	4 OF 1