

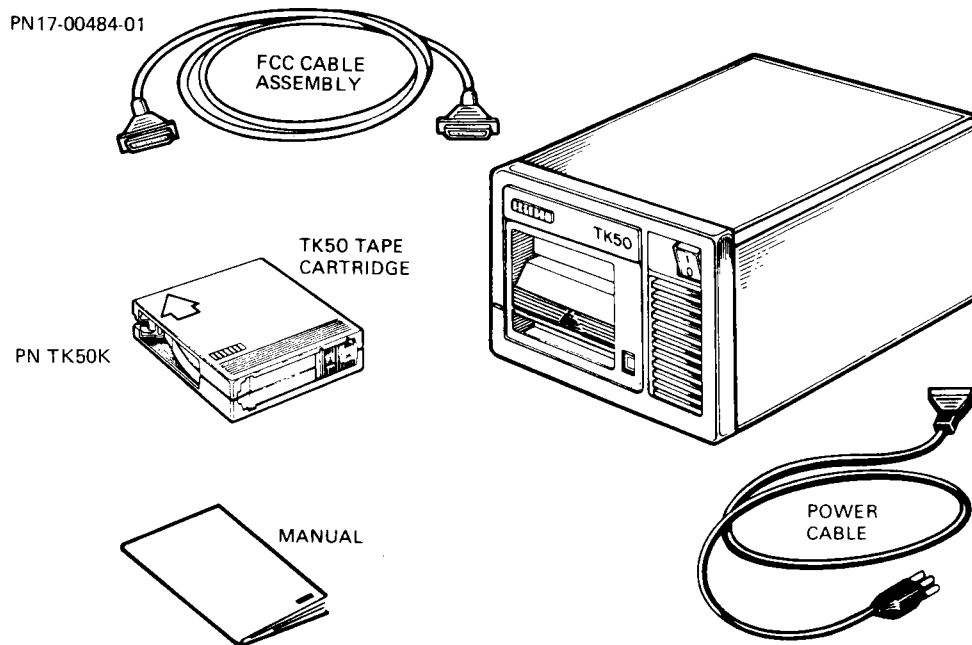
UNPACKING THE TK50-D (DESKTOP) SUBSYSTEM (FIGURE 1-4)

If any item is missing or damaged:

- Contact your sales representative.
- Contact your delivery agent.

The TK50-D (Figure 1-4) is shipped completely assembled and ready to connect to the computer system.

If your computer already has a TK50 controller module, go to Connecting a TK50-R or TK50-D to Host in this chapter.



MR-15370
SHR-0391-85

Figure 1-4 TK50-D System and Parts