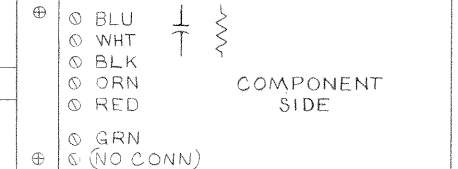


This drawing and specifications, herein, are the property of Digital Equipment Corporation and shall not be reproduced or copied or used in whole or in part as the basis for the manufacture or sale of items without written permission.

CABLE CONNECTIONS TO TERMINAL BOARD

NUMBER IN LUG CORRESPONDS
TO TERMINAL BOARD
NUMBERS



TTY. CABLE VARIATIONS

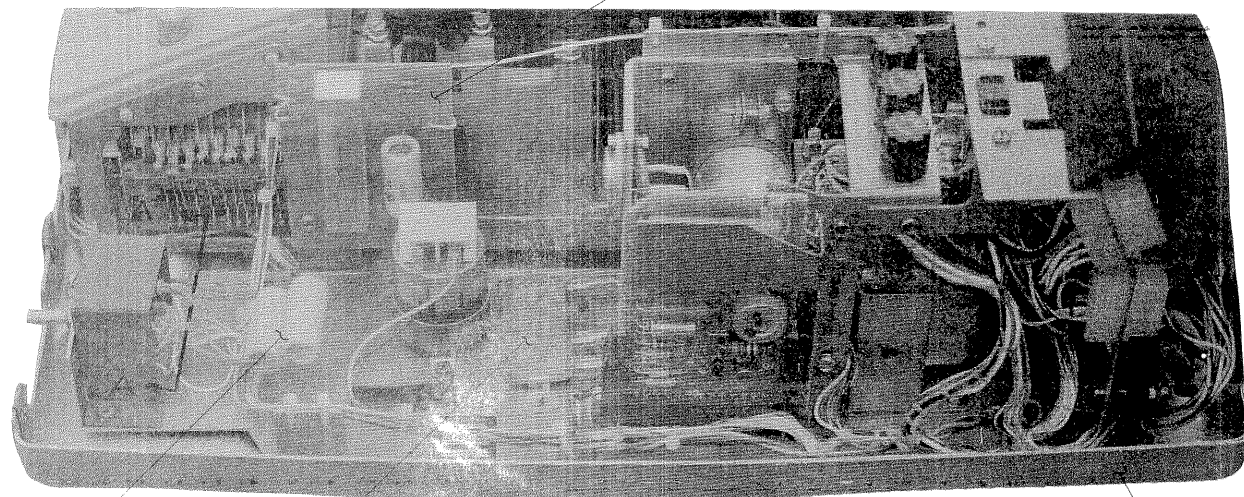
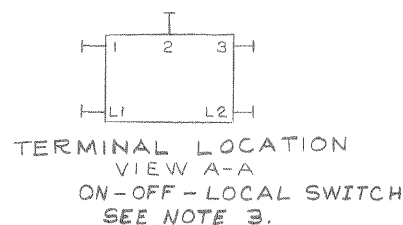
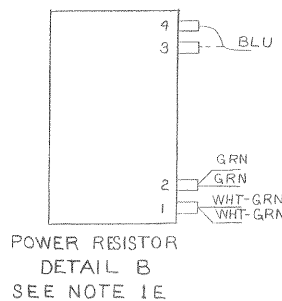
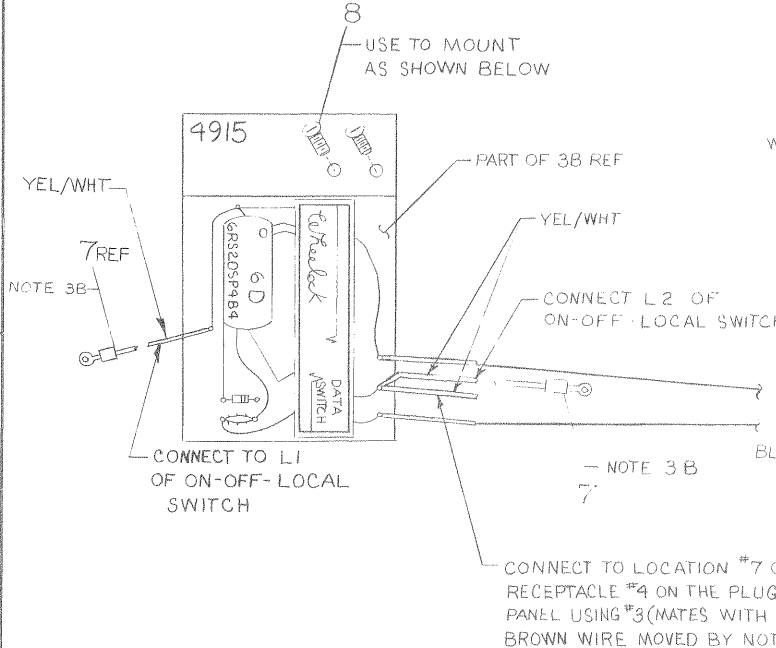
| PROD LINE | CABLE NUMBER |
|----------------|--------------------------|
| PDP-8, 8L, 8S | 7006593-1 (12 FT) + W078 |
| PDP-12, LINC 8 | 7006593-2 (18 FT) + W078 |
| PDP-9, 9L | |
| PDP-8E, PDP-11 | 7006593-1 (12 FT) |
| PDP-15 | 7006593-2 (18 FT) |

NOTES:

- ADDITIONAL ELECTRICAL CHANGES TO TERMINAL BOARD CONNECTIONS AND CALL CONTROL UNIT.
 - REMOVE BRN/YEL WIRE FROM LUG 3 & PLACE ON LUG 5.
 - REMOVE BLU/WHT WIRE FROM LUG 4 & PLACE ON LUG 5.
 - REMOVE PURPLE WIRE FROM LUG 8 & PLACE ON LUG 9.
 - MOVE BROWN WIRE ON PLUG #4 FROM LOCATION #11 TO LOCATION #7 (MATES WITH YEL/WHT WIRE FROM 4915)
 - MOVE BLUE WIRE FROM TERMINAL #3 TO TERMINAL #4 (END) OF 181816 POWER RESISTOR.
- MECHANICAL CHANGES
 - REMOVE SPRING & WRU PAWL UNIT FROM SLOT 'N' IN FUNCTION CASTING.
- A ADD (2) 6RS20SP4B4 THYRISTORS DEC #1100106 TO UNIT & WIRE AS INDICATED BELOW USING ITEM #7

| FROM | TO |
|--------------|----------------------------|
| THYRISTOR #1 | CONN #2 L OF ON-OFF PWR SW |
| THYRISTOR #2 | CONN 1 OF ON-OFF PWR SW |

- USING ITEM #7 CONNECT YEL-WHT WIRES TO INDICATED TERMINALS OF ON-OFF-LOCAL SWITCH.
- USE ITEM #9 & #10 TO TIE WIRING.
- TELETYPES FOR USE ON 50 HZ OR VOLTAGES OTHER THAN 115 V ALSO REQUIRE MODIFICATION PER DWG. D-IA-7505039-0-0



| | | | |
|----|---------------------------------|-----------|----|
| 1 | MODULE, ADAPTER W078 | W078 | 11 |
| 2 | CABLE TIE 3/16 X 6-1/2 LG SST2M | 9007032 | 10 |
| 15 | CABLE TIE 3/32 X 3-3/4 LG SST1M | 9007031 | 9 |
| 2 | SCR.PH.PAN HD. 6-32 X 1/4 | 9006020-1 | 8 |
| 5 | SOLDERLESS TERM #6AWG18-22 | 9007929 | 7 |
| 2 | THYRISTOR GE 6RS20SP4B4 | 1100106 | 6 |
| 1 | CABLE ASSY.MATE-N-LOK T04915 | 7006593 | 5 |
| 1 | CABLE ASSY W076 TO 4915 | 7005676 | 4 |
| 1 | PIN TELETYPE 182644 | 2911459 | 3 |
| 1 | TTY WRITER MODEL 33TU(60HZ) | 3004779 | 2 |
| 1 | TTY WRITER MODEL 33TBP(50HZ) | 3005716 | 1 |

| FIRST USED ON OPTION/MODEL | QTY. | DESCRIPTION | PART NO. | ITEM NO. |
|--|--------------------|--------------|-------------------------------|----------|
| LT33-DA | | | | |
| UNLESS OTHERWISE SPECIFIED DIMENSION IN INCHES. TOLERANCES | DRN. R.THELLEN | DATE 2-24-70 | PARTS LIST | |
| DECIMALS | CHK'D. K. RUSS | DATE 2-24-70 | TITLE | |
| ANGLES | ENG. W.DAVIS | DATE 3-3-70 | TELETYPE MODIFICATIONS (LT33) | |
| REMOVE BURRS AND BREAK SHARP CORNERS SURFACE QUALITY | PROJ. ENG. C.BLASI | DATE 3-3-70 | PROD. T.MACDONALD | |
| MATERIAL | NEXT HIGHER ASSY. | DATE 3-3-70 | SIZE CODE | |
| FINISH | SCALE | SHEET 1 OF 2 | NUMBER | |
| | | | DIA 7505038-0-0 | |
| | | | REV. C | |

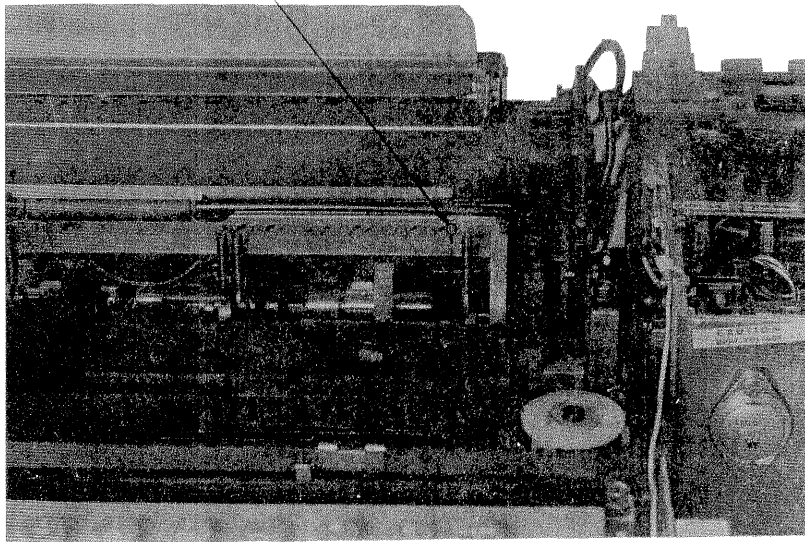
| REVISIONS | CHANGE NO. | REV. |
|-----------|-----------------------|------|
| 1 | LT33-00002 | B |
| 2 | REVISED & REDRAWN | |
| 3 | 2-20-71 | |
| 4 | A.KENT | |
| 5 | Allen Kent 28 July 71 | |
| 6 | LT33-00003 | C |
| 7 | 7th Change 10-21-71 | |
| 8 | A.KENT | |
| 9 | Allen Kent 28 Oct 71 | |

This drawing and specifications, herein, are the property of Digital Equipment Corporation and shall not be reproduced or copied or used in whole or in part as the basis for the manufacture or sale of items without written permission.

REV. C
NUMBER DIA7505038-0-0
SIZE CODE 2

WRU PAWL SPRING

SEE NOTE 2A
PARTS TO BE REMOVED
INDICATED BY DASHED LINE

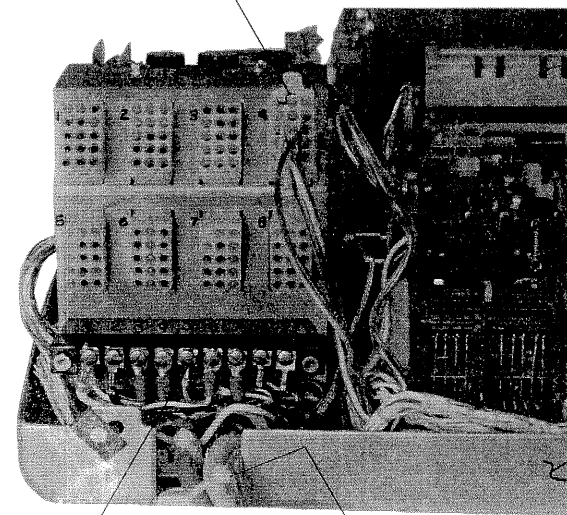


PLUG PANEL

SEE CABLE LAYOUT
SHEET 1 AND NOTE 1D

020-00-000000
020-00-000000
020-00-000000
020-00-000000

WIRING SIDE VIEW OF
PLUG #4. (PIN SIDE VIEW
OF RECEPTACLE #4)



SUB BASE

SEE NOTE 1
TERMINAL BOARD

10
SECURE INTERFACE CABLE TO
CALL CONTROL UNIT AND
POWER CORD.

FIRST USED ON OPTION/MODEL

+

DO NOT SCALE DRAWING

UNLESS OTHERWISE SPECIFIED

DIMENSION IN INCHES

TOLERANCES

DECIMALS FRACTIONS ANGLES

± .005 ± 1/64 ± 0°30'

FINAL SURFACE QUALITY

REMOVE BURRS AND BREAK SHARP CORNERS

MATERIAL

+

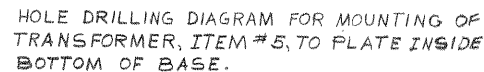
FINISH

+

| QTY. | DESCRIPTION | PART NO. | ITEM NO. |
|---|--------------|--------------|----------|
| PARTS LIST | | | |
| DRN | R. THELLEN | DATE 2-24-70 | |
| CHK'D | K. RUSS | DATE 2-24-70 | |
| ENG. | W. DAVIS | DATE 3-3-70 | |
| PROJ. ENG. | C. BLASI | DATE 3-3-70 | |
| PROD. | T. MACDONALD | DATE 3-3-70 | |
| NEXT HIGHER ASSY | | + | |
| SCALE | + | | |
| SHEET | 2 OF 2 | | |
| TITLE | | | |
| digital EQUIPMENT CORPORATION MAYNARD, MASSACHUSETTS | | | |
| TELETYPE MODIFICATIONS (LT-33) | | | |
| SIZE CODE | NUMBER | REV. | |
| DIA7505038-0-0 | | C | |
| DIST. | | | |

| REV. | CHANGE NO. |
|------|------------|
| CHK | |

DEC FORM NO. 100



*INDICATES STD.
FACTORY CONNECTIONS

FAN DEFLECTOR F.S.#2911553
TELETYPE 182183
(REF)

✓ SEE NOTE 5

FAN F.S. * 2911554
TELETYPE 182181
(REF)

-SUB BASE

13 PLACE APPROPRIATE
DECAL HLKX INDICATING
VOLTAGE AND FREQUENCY
AFTER MODIFICATION


DRIVE GEAR

PINION GEAR

— SEE NOTE 1C

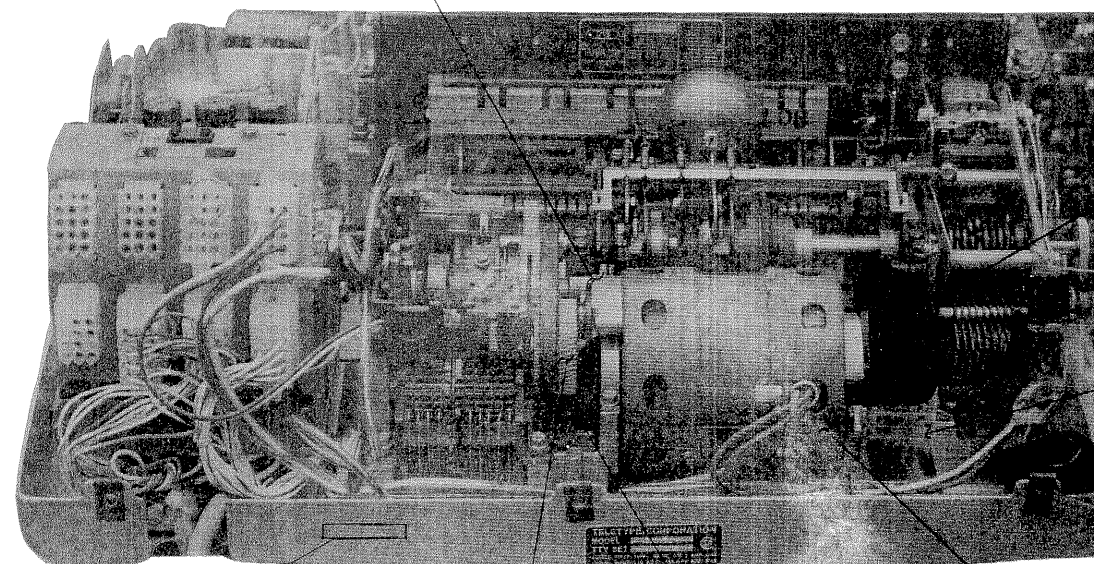
~~—~~ SEE NOTE 1A
MOTOR

| | | | |
|---|-------------------------------|------------|----|
| 1 | DECAL, VOLTAGE SPEC | 7409045-2 | 13 |
| 2 | SOLDERLESS CONN.*10 AWG 14-16 | 9007928 | 12 |
| 1 | PLUG 220V | 9008853 | 11 |
| 1 | CORD SET 12 FT | 9107673-12 | 10 |
| 4 | HEX NUT 8-32 X 5/16 X 1/8 | 9006561 | 9 |
| 4 | FLAT WASHER #8 | 9006650 | 8 |
| 4 | LOCK WASHER #8 | 9006690 | 7 |
| 4 | SCR.PAN HD 8-32 X 3/8 | 9006037-1 | 6 |
| 1 | TRANSFORMER STEP-DOWN | 1609313 | 5 |
| 1 | PLATE WSTUD TELETYPE 181850 | 1204898 | 4 |
| 1 | PINION GEAR 50H ZTTY.181851 | 1204849 | 3 |
| 1 | DRIVE GEAR 50H ZTTY.181855 | 1204850 | 2 |
| 1 | MOTOR 50H ZTTY.182267 | 1204789 | 1 |

| | | | | | | | |
|--|---------|------------------------|-----------------|--|----------|-------------|----------|
| FIRST USED ON OPTION/MODEL | | QTY. | DESCRIPTION | | PART NO. | | ITEM NO. |
| — / — | | | PARTS LIST | | | | |
| UNLESS OTHERWISE SPECIFIED DIMENSION IN INCHES. TOLERANCES | | DRN. R. THELLEN | DATE 2-24-70 |  DIGITAL EQUIPMENT CORPORATION MAYNARD, MASSACHUSETTS | | | |
| DECIMALS | ANGLES | CHK'D. K. RUSS | DATE 2-24-70 | | | | |
| .XXX = .005 | ±0° 30' | ENG. W. DAVIS | DATE 3-3-70 | | | | |
| .XX = .02 | | PROJ. ENG. C. BLASI | DATE 3-3-70 | | | | |
| .X = .1 | | PROD. T. MACDONALD | DATE 3-3-70 | | | | |
| REMOVE BURRS AND BREAK SHARP CORNERS. SURFACE QUALITY ✓ | | | | TITLE TELETYPE MODIFICATIONS (50 HZ & 240V.) | | | |
| MATERIAL | | NEXT HIGHER ASSY. | | SIZE | CODE | NUMBER | REV. |
| — / — | | — / — | | D | 1A | 7505039-0-0 | C |
| FINISH | | SCALE | | | | | |
| — / — | | SHEET OF | | DIST | | | |

NOTES :

1. FOR 50 HZ OPERATION, PERFORM THE FOLLOWING CHANGES (NOT NECESSARY IF STARTING WITH TELETYPE 33 TBP):
 - A. REMOVE MOTOR AND REPLACE WITH ITEM*1 (NOT NECESSARY IF MOTOR WAS ALREADY 50/60 HZ ON NAME PLATE)
 - B. REMOVE DRIVE GEAR AND REPLACE WITH ITEM*2
 - C. REMOVE PINION GEAR AND REPLACE WITH ITEM*3
 - D. REMOVE PLATE WITH STUD AND REPLACE WITH ITEM*4. (181850 CAN BE USED WITH 50 OR 60 HZ).
2. FOR OPERATION ON VOLTAGES OTHER THAN 115V, PERFORM THE FOLLOWING OPERATIONS.
 - A. MOUNT ITEM*5 IN BASE OF TELETYPE STAND USING ITEM*6 THRU*9. DRILL HOLES PER PATTERN SHOWN. CUT ITEM*10 AND CONNECT AS SHOWN.
3. FOR OPERATION ON VOLTAGES FROM 190V TO 250V ON PDP8-E AND PDP11 TELETYPES CUT MALE PLUG OF POWER CORD AND REPLACE WITH ITEM*11, WIRE AS SHOWN.
4. SEE ALSO DWG. D-1A-7505038-0-0 WHEN RELAY CONTROLLED READER IS REQUIRED.
5. ADD FAN DEFLECTOR TO 50 HZ UNITS IF NOT ALREADY SUPPLIED.
6. IF NOT CUT OFF, PAINT MALE END OF ITEM*10 RED WHEN WIRED FOR 190V TO 250V.



| | | | | | | | | | | | | | | | | | | | |
|---|--------------------|------------------------|---------------------------------|--------------|----------------------|---------------|---------------|----------|--|--|--|------|--|------------|--|--|--|--|--|
| DIGITAL EQUIPMENT CORPORATION MAYNARD, MASSACHUSETTS | | | | | QUANTITY / VARIATION | | | | | | | | | | | | | | |
| PARTS LIST | | | | | | | | | | | | | | | | | | | |
| MADE BY <i>C. Stephenson</i> | | CHECKED D. HEALY | | SECTION | | | | | | | | | | | | | | | |
| DATE <i>9/25/68</i> | | DATE <i>1-20-70</i> | | 1 | | | | | | | | | | | | | | | |
| ENG <i>Allen Kent</i> | | PROD <i>A. McEllen</i> | | ISSUED SECT. | | | | | | | | | | | | | | | |
| DATE <i>30 Jan 70</i> | | DATE <i>2-9-70</i> | | 1 | | | | | | | | | | | | | | | |
| ITEM NO. | DWG NO. / PART NO. | | DESCRIPTION | | | LT33-BB 50 Hz | LT33-BA 60 Hz | | | | | | | | | | | | |
| 1 | 3004768 | | Send-Receive Set 33TY | | | 1 | 1 | | | | | | | | | | | | |
| 2 | | | "ME" Typewheel Teletype 183 599 | | | 1 | 1 | | | | | | | | | | | | |
| 3 | 12-05693 | | Cordset | | | 1 | 1 | | | | | | | | | | | | |
| 4 | 12-05857-1 | | 283B Plug | | | 1 | 1 | | | | | | | | | | | | |
| 5 | 12-05857-2 | | 404 B Jack | | | 1 | 1 | | | | | | | | | | | | |
| 6 | 1602583 | | Transformer Elgin 1725 | | | 1 | | | | | | | | | | | | | |
| 7 | 91-07673-12 | | Cordset 12 feet | | | 1 | | | | | | | | | | | | | |
| 8 | 1204789 | | Motor Teletype 182267 50 Hz | | | 1 | | | | | | | | | | | | | |
| 9 | 1204850 | | Drive Gear Teletype 181855 | | | 1 | | | | | | | | | | | | | |
| 10 | 1204849 | | PINION Gear Teletype 181851 | | | 1 | | | | | | | | | | | | | |
| 11 | 1204848 | | PINION Teletype 181850 | | | 1 | | | | | | | | | | | | | |
| 12 | 9006037-1 | | SCR PAN HD 8-32 x 3/8 | | | 4 | | | | | | | | | | | | | |
| 13 | 9006690 | | LOCK WASHER #8 | | | 4 | | | | | | | | | | | | | |
| 14 | 9006650 | | FLAT WASHER #8 | | | 4 | | | | | | | | | | | | | |
| 15 | 9006561 | | HEX NUT 8-32 x 5/16 x 1/8 | | | 4 | | | | | | | | | | | | | |
| 16 | 7409045-2 | | DECAL, VOLTAGE SPEC | | | 1 | | | | | | | | | | | | | |
| | | | | | | | | | | | | | | | | | | | |
| | | | | | | | | | | | | | | | | | | | |
| | | | | | | | | | | | | | | | | | | | |
| | | | | | | | | | | | | | | | | | | | |
| | | | | | | | | | | | | | | | | | | | |
| | | | | | | | | | | | | | | | | | | | |
| | | | | | | | | | | | | | | | | | | | |
| TITLE | | | ASSY NO. | | SIZE | CODE | | NUMBER | | | | REV. | | ECO NO. | | | | | |
| TIMESHARING TELETYPE 33 ASR (TY) | | | D-UA-LT33-B-0 | | A | PL | | LT33-B-0 | | | | B | | LT33-00003 | | | | | |
| SHEET 1 | | | OF 1 | | DIST. | | | | | | | | | | | | | | |

This drawing and specifications, herein, are the property of Digital Equipment Corporation and shall not be reproduced or copied or used in whole or in part as the basis for the manufacture or sale of items without written permission.

REV. B LT33-B-CONT 2

115V LINE (HOT)

DOTTED LINES SHOW PDP-8 CONSOLE TELETYPE MODIFICATION FOR REFERENCE

115V LINE (RETURN)

FOR CUSTOMER SUPPLIED ALARM (NOT USED)

(NOT USED)

| 240V TRANSFORMER TAP TABLE | | | | CONNECTOR CORRESPONDENCE | | | |
|----------------------------|------|------|--------|--------------------------|------|------|--------|
| VOLTAGE | LINE | LOAD | COMMON | VOLTAGE | LINE | LOAD | COMMON |
| 287 | 3 | 4 | C | 126 | 6 | 4 | C |
| 275 | 3 | 4 | C | 121 | 5 | 4 | C |
| 274 | 3 | 5 | C | 115 | 6 | 6 | C |
| 265 | 1 | 4 | C | 110 | 5 | 4 | 1 |
| 263 | 2 | 5 | C | 106 | 6 | 4 | 1 |
| 260 | 3 | 6 | C | 100 | 1 | 3 | 4 |
| 252 | 1 | 5 | C | 96 | C | 1 | 5 |
| 250 | 2 | 6 | C | 90 | C | 2 | 5 |
| 240 | 1 | 6 | C | 85 | C | 3 | 6 |
| 230 | C | 6 | 1 | 82 | C | 2 | 4 |
| 213 | C | 6 | 2 | 77 | C | 3 | 4 |
| 213 | C | 5 | 1 | | | | |
| 206 | C | 6 | 3 | | | | |
| 204 | C | 5 | 2 | | | | |
| 203 | C | 4 | 1 | | | | |
| 198 | C | 5 | 3 | | | | |
| 197 | C | 4 | 2 | | | | |
| 193 | C | 4 | 3 | | | | |

THIS TABLE PROVIDES 115V TO THE LOAD AT THE NOMINAL LINE VOLTAGE

FIRST USED ON OPTION/MODEL PDPIØ

| | | | |
|--------------------------------------|------------------|------|---|
| UNLESS OTHERWISE SPECIFIED | DRN | DATE | digital EQUIPMENT CORPORATION MAYNARD, MASSACHUSETTS |
| UNLESS OTHERWISE SPECIFIED | CHKD. | DATE | |
| DIMENSION IN INCHES | ENG. | DATE | |
| TOLERANCES | PROJ. ENG. | DATE | |
| DECIMALS FRACTIONS ANGLES | PROD. | DATE | TITLE READER CONTROL CIRCUITS (ISOLATED DIAGRAM) [TIMESHARING ASR 33] |
| ± .005 ± 1/64 ± 0°30' | NEXT HIGHER ASSY | DATE | |
| FINAL SURFACE QUALITY | | | SIZE/CODE DBS LT33-B-CONT |
| REMOVE BURRS AND BREAK SHARP CORNERS | | | NUMBER B |
| MATERIAL | | | REV B |
| FINISH | | | |
| SHEET 1 OF 1 | | | |

| REV. | CHANGE NO. | DATE | BY |
|------|------------|---------|---------|
| A | 1 | 7-15-71 | A. KENT |
| B | 2 | 7-15-71 | A. KENT |
| C | 3 | 7-15-71 | A. KENT |
| D | 4 | 7-15-71 | A. KENT |
| E | 5 | 7-15-71 | A. KENT |
| F | 6 | 7-15-71 | A. KENT |
| G | 7 | 7-15-71 | A. KENT |
| H | 8 | 7-15-71 | A. KENT |
| I | 9 | 7-15-71 | A. KENT |
| J | 10 | 7-15-71 | A. KENT |
| K | 11 | 7-15-71 | A. KENT |
| L | 12 | 7-15-71 | A. KENT |
| M | 13 | 7-15-71 | A. KENT |
| N | 14 | 7-15-71 | A. KENT |
| O | 15 | 7-15-71 | A. KENT |
| P | 16 | 7-15-71 | A. KENT |
| Q | 17 | 7-15-71 | A. KENT |
| R | 18 | 7-15-71 | A. KENT |
| S | 19 | 7-15-71 | A. KENT |
| T | 20 | 7-15-71 | A. KENT |
| U | 21 | 7-15-71 | A. KENT |
| V | 22 | 7-15-71 | A. KENT |
| W | 23 | 7-15-71 | A. KENT |
| X | 24 | 7-15-71 | A. KENT |
| Y | 25 | 7-15-71 | A. KENT |
| Z | 26 | 7-15-71 | A. KENT |
| AA | 27 | 7-15-71 | A. KENT |
| AB | 28 | 7-15-71 | A. KENT |
| AC | 29 | 7-15-71 | A. KENT |
| AD | 30 | 7-15-71 | A. KENT |
| AE | 31 | 7-15-71 | A. KENT |
| AF | 32 | 7-15-71 | A. KENT |
| AG | 33 | 7-15-71 | A. KENT |
| AH | 34 | 7-15-71 | A. KENT |
| AI | 35 | 7-15-71 | A. KENT |
| AJ | 36 | 7-15-71 | A. KENT |
| AK | 37 | 7-15-71 | A. KENT |
| AL | 38 | 7-15-71 | A. KENT |
| AM | 39 | 7-15-71 | A. KENT |
| AN | 40 | 7-15-71 | A. KENT |
| AO | 41 | 7-15-71 | A. KENT |
| AP | 42 | 7-15-71 | A. KENT |
| AQ | 43 | 7-15-71 | A. KENT |
| AR | 44 | 7-15-71 | A. KENT |
| AS | 45 | 7-15-71 | A. KENT |
| AT | 46 | 7-15-71 | A. KENT |
| AU | 47 | 7-15-71 | A. KENT |
| AV | 48 | 7-15-71 | A. KENT |
| AW | 49 | 7-15-71 | A. KENT |
| AX | 50 | 7-15-71 | A. KENT |
| AY | 51 | 7-15-71 | A. KENT |
| AZ | 52 | 7-15-71 | A. KENT |
| BA | 53 | 7-15-71 | A. KENT |
| BB | 54 | 7-15-71 | A. KENT |
| BC | 55 | 7-15-71 | A. KENT |
| BD | 56 | 7-15-71 | A. KENT |
| BE | 57 | 7-15-71 | A. KENT |
| BF | 58 | 7-15-71 | A. KENT |
| BG | 59 | 7-15-71 | A. KENT |
| BH | 60 | 7-15-71 | A. KENT |
| BI | 61 | 7-15-71 | A. KENT |
| BJ | 62 | 7-15-71 | A. KENT |
| BK | 63 | 7-15-71 | A. KENT |
| BL | 64 | 7-15-71 | A. KENT |
| BM | 65 | 7-15-71 | A. KENT |
| BN | 66 | 7-15-71 | A. KENT |
| BO | 67 | 7-15-71 | A. KENT |
| BP | 68 | 7-15-71 | A. KENT |
| BQ | 69 | 7-15-71 | A. KENT |
| BR | 70 | 7-15-71 | A. KENT |
| BS | 71 | 7-15-71 | A. KENT |
| BT | 72 | 7-15-71 | A. KENT |
| BU | 73 | 7-15-71 | A. KENT |
| BV | 74 | 7-15-71 | A. KENT |
| BW | 75 | 7-15-71 | A. KENT |
| BX | 76 | 7-15-71 | A. KENT |
| BY | 77 | 7-15-71 | A. KENT |
| BZ | 78 | 7-15-71 | A. KENT |
| CA | 79 | 7-15-71 | A. KENT |
| CB | 80 | 7-15-71 | A. KENT |
| CC | 81 | 7-15-71 | A. KENT |
| CD | 82 | 7-15-71 | A. KENT |
| CE | 83 | 7-15-71 | A. KENT |
| CF | 84 | 7-15-71 | A. KENT |
| CG | 85 | 7-15-71 | A. KENT |
| CH | 86 | 7-15-71 | A. KENT |
| CI | 87 | 7-15-71 | A. KENT |
| CJ | 88 | 7-15-71 | A. KENT |
| CK | 89 | 7-15-71 | A. KENT |
| CL | 90 | 7-15-71 | A. KENT |
| CM | 91 | 7-15-71 | A. KENT |
| CN | 92 | 7-15-71 | A. KENT |
| CO | 93 | 7-15-71 | A. KENT |
| CP | 94 | 7-15-71 | A. KENT |
| CQ | 95 | 7-15-71 | A. KENT |
| CR | 96 | 7-15-71 | A. KENT |
| CS | 97 | 7-15-71 | A. KENT |
| CT | 98 | 7-15-71 | A. KENT |
| CU | 99 | 7-15-71 | A. KENT |
| CV | 100 | 7-15-71 | A. KENT |
| CW | 101 | 7-15-71 | A. KENT |
| CX | 102 | 7-15-71 | A. KENT |
| CY | 103 | 7-15-71 | A. KENT |
| CZ | 104 | 7-15-71 | A. KENT |
| DA | 105 | 7-15-71 | A. KENT |
| DB | 106 | 7-15-71 | A. KENT |
| DC | 107 | 7-15-71 | A. KENT |
| DD | 108 | 7-15-71 | A. KENT |
| DE | 109 | 7-15-71 | A. KENT |
| DF | 110 | 7-15-71 | A. KENT |
| DG | 111 | 7-15-71 | A. KENT |
| DH | 112 | 7-15-71 | A. KENT |
| DI | 113 | 7-15-71 | A. KENT |
| DJ | 114 | 7-15-71 | A. KENT |
| DK | 115 | 7-15-71 | A. KENT |
| DL | 116 | 7-15-71 | A. KENT |
| DM | 117 | 7-15-71 | A. KENT |
| DN | 118 | 7-15-71 | A. KENT |
| DO | 119 | 7-15-71 | A. KENT |
| DP | 120 | 7-15-71 | A. KENT |
| DQ | 121 | 7-15-71 | A. KENT |
| DR | 122 | 7-15-71 | A. KENT |
| DS | 123 | 7-15-71 | A. KENT |
| DT | 124 | 7-15-71 | A. KENT |
| DU | 125 | 7-15-71 | A. KENT |
| DV | 126 | 7-15-71 | A. KENT |
| DW | 127 | 7-15-71 | A. KENT |
| DX | 128 | 7-15-71 | A. KENT |
| DY | 129 | 7-15-71 | A. KENT |
| DZ | 130 | 7-15-71 | A. KENT |
| EA | 131 | 7-15-71 | A. KENT |
| EB | 132 | 7-15-71 | A. KENT |
| EC | 133 | 7-15-71 | A. KENT |
| ED | 134 | 7-15-71 | A. KENT |
| EE | 135 | 7-15-71 | A. KENT |
| EF | 136 | 7-15-71 | A. KENT |
| EG | 137 | 7-15-71 | A. KENT |
| EH | 138 | 7-15-71 | A. KENT |
| EI | 139 | 7-15-71 | A. KENT |
| EJ | 140 | 7-15-71 | A. KENT |
| EK | 141 | 7-15-71 | A. KENT |
| EL | 142 | 7-15-71 | A. KENT |
| EM | 143 | 7-15-71 | A. KENT |
| EN | 144 | 7-15-71 | A. KENT |
| EO | 145 | 7-15-71 | A. KENT |
| EP | 146 | 7-15-71 | A. KENT |
| EQ | 147 | 7-15-71 | A. KENT |
| ER | 148 | 7-15-71 | A. KENT |
| ES | 149 | 7-15-71 | A. KENT |
| ET | 150 | 7-15-71 | A. KENT |
| EU | 151 | 7-15-71 | A. KENT |
| EV | 152 | 7-15-71 | A. KENT |
| EW | 153 | 7-15-71 | A. KENT |
| EX | 154 | 7-15-71 | A. KENT |
| EY | 155 | 7-15-71 | A. KENT |
| EZ | 156 | 7-15-71 | A. KENT |
| FA | 157 | 7-15-71 | A. KENT |
| FB | 158 | 7-15-71 | A. KENT |
| FC | 159 | 7-15-71 | A. KENT |
| FD | 160 | 7-15-71 | A. KENT |
| FE | 161 | 7-15-71 | A. KENT |
| FF | 162 | 7-15-71 | A. KENT |
| FG | 163 | 7-15-71 | A. KENT |
| FH | 164 | 7-15-71 | A. KENT |
| FI | 165 | 7-15-71 | A. KENT |
| FJ | 166 | 7-15-71 | A. KENT |
| FK | 167 | 7-15-71 | A. KENT |
| FL | 168 | 7-15-71 | A. KENT |
| FM | 169 | 7-15-71 | A. KENT |
| FN | 170 | 7-15-71 | A. KENT |
| FO | 171 | 7-15-71 | A. KENT |
| FP | 172 | 7-15-71 | A. KENT |
| FQ | 173 | 7-15-71 | A. KENT |
| FR | 174 | 7-15-71 | A. KENT |
| FS | 175 | 7-15-71 | A. KENT |
| FT | 176 | 7-15-71 | A. KENT |
| FU | 177 | 7-15-71 | A. KENT |
| FV | 178 | 7-15-71 | A. KENT |
| FW | 179 | 7-15-71 | A. KENT |
| FX | 180 | 7-15-71 | A. KENT |
| FY | 181 | 7-15-71 | A. KENT |
| FZ | 182 | 7-15-71 | A. KENT |
| GA | 183 | 7-15-71 | A. KENT |
| GB | 184 | 7-15-71 | A. KENT |
| GC | 185 | 7-15-71 | A. KENT |
| GD | 186 | 7-15-71 | A. KENT |
| GE | 187 | 7-15-71 | A. KENT |
| GF | 188 | 7-15-71 | A. KENT |
| GG | 189 | 7-15-71 | A. KENT |
| GH | 190 | 7-15-71 | A. KENT |
| GI | 191 | 7-15-71 | A. KENT |
| GJ | 192 | 7-15-71 | A. KENT |
| GK | 193 | 7-15-71 | A. KENT |
| GL | 194 | 7-15-71 | A. KENT |
| GM | 195 | 7-15-71 | A. KENT |
| GN | 196 | 7-15-71 | A. KENT |
| GO | 197 | 7-15-71 | A. KENT |
| GP | 198 | 7-15-71 | A. KENT |
| GQ | 199 | 7-15-71 | A. KENT |
| GR | 200 | 7-15-71 | A. KENT |
| GS | 201 | 7-15-71 | A. KENT |
| GT | 202 | 7-15-71 | A. KENT |
| GU | 203 | 7-15-71 | A. KENT |
| GV | 204 | 7-15-71 | A. KENT |
| GW | 205 | 7-15-71 | A. KENT |
| GX | 206 | 7-15-71 | A. KENT |
| GY | 207 | 7-15-71 | A. KENT |
| GZ | 208 | 7-15-71 | A. KENT |
| HA | 209 | 7-15-71 | A. KENT |
| HB | 210 | 7-15-71 | A. KENT |
| HC | 211 | 7-15-71 | A. KENT |
| HD | 212 | 7-15-71 | A. KENT |
| HE | 213 | 7-15-71 | A. KENT |
| HF | 214 | 7-15-71 | A. KENT |
| HG | 215 | 7-15-71 | A. KENT |
| HH | 216 | 7-15-71 | A. KENT |
| HI | 217 | 7-15-71 | A. KENT |
| HJ | 218 | 7-15-71 | A. KENT |
| HK | 219 | 7-15-71 | A. KENT |
| HL | 220 | 7-15-71 | A. KENT |
| HM | 221 | 7-15-71 | A. KENT |
| HN | 222 | 7-15-71 | A. KENT |
| HO | 223 | 7-15-71 | A. KENT |
| HP | 224 | 7-15-71 | A. KENT |
| HQ | 225 | 7-15-71 | A. KENT |
| HR | 226 | 7-15-71 | A. KENT |
| HS | 227 | 7-15-71 | A. KENT |
| HT | 228 | 7-15-71 | A. KENT |
| HU | 229 | 7-15-71 | A. KENT |
| HV | 230 | 7-15-71 | A. KENT |
| HW | 231 | 7-15-71 | A. KENT |
| HX | 232 | 7-15-71 | A. KENT |
| HY | 233 | 7-15-71 | A. KENT |
| HZ | 234 | 7-15-71 | A. KENT |
| IA | 235 | 7-15-71 | A. KENT |
| IB | 236 | 7-15-71 | A. KENT |
| IC | 237 | 7-15-71 | A. KENT |
| ID | 238 | 7-15-71 | A. KENT |
| IE | 239 | 7-15-71 | A. KENT |
| IF | 240 | 7-15-71 | A. KENT |
| IG | 241 | 7-15-71 | A. KENT |
| IH | 242 | 7-15-71 | A. KENT |
| II | 243 | 7-15-71 | A. KENT |
| IJ | 244 | 7-15-71 | A. KENT |
| IK | 245 | 7-15-71 | A. KENT |
| IL | 246 | 7-15-71 | A. KENT |
| IM | 247 | 7-15-71 | A. KENT |
| IN | 248 | 7-15-71 | A. KENT |
| IO | 249 | 7-15-71 | A. KENT |
| IP | 250 | 7-15-71 | A. KENT |
| IQ | 251 | 7-15-71 | A. KENT |
| IR | 252 | 7-15-71 | A. KENT |
| IS | 253 | 7-15-71 | A. KENT |
| IT | 254 | 7-15-71 | A. KENT |
| IU | 255 | 7-15-71 | A. KENT |
| IV | 256 | 7-15-71 | A. KENT |
| IW | 257 | 7-15-71 | A. KENT |
| IX | 258 | 7-15-71 | A. KENT |
| IY | 259 | 7-15-71 | A. KENT |
| IZ | 260 | 7-15-71 | A. KENT |
| JA | 261 | 7-15-71 | A. KENT |
| JB | 262 | 7-15-71 | A. KENT |
| JC | 263 | 7-15-71 | A. KENT |
| JD | 264 | 7-15-71 | A. KENT |
| JE | 265 | 7-15-71 | A. KENT |
| JF | 266 | 7-15-71 | A. KENT |
| JG | 267 | 7-15-71 | A. KENT |
| JH | 268 | 7-15-71 | A. KENT |
| JI | 269 | 7-15-71 | A. KENT |
| JJ | 270 | 7-15-71 | A. KENT |
| JK | 271 | 7-15-71 | A. KENT |
| JL | 272 | 7-15-71 | A. KENT |
| JM | 273 | 7-15-71 | A. KENT |
| JN | 274 | 7-15-71 | A. KENT |
| JO | 275 | 7-15-71 | A. KENT |
| JP | 276 | 7-15-71 | A. KENT |
| JQ | 277 | 7-15-71 | A. KENT |

This drawing and specifications, herein, are the property of Digital Equipment Corporation and shall not be reproduced or copied or used in whole or in part as the basis for the manufacture or sale of items without written permission.

8
7
6
5
4
3

LEGEND

| NUMBER | VARIATIONS |
|---------|------------|
| LT33-BA | 115V 60 HZ |
| LT33-BB | 230V 50 HZ |

NOTES:

- REPLACE FURNISHED TYPING CYLINDER WITH SLASHED ZERO TYPING CYLINDER, "ME" PART NO. 2911511, TTY. PART NO. 183599.
- DO NOT DISABLE FORM FEED, WRU (ENG), X-ON (DC₁), X-OFF (DC₃), TAPE ON (DC₂) OR TAPE OFF (DC₄) FEATURES FROM STUNT BOX.
- DO NOT REMOVE PARITY GENERATION FROM KEYBOARD.
- WIRE SHORT LEAD END OF ITEM 3 TO ITEM 4 AS FOLLOWS:

| ITEM 3 | ITEM 4 |
|--------|--------|
| RED | R |
| GREEN | G |
| BLACK | B |
| YELLOW | Y |

INSERT EARBAND TAB OF ITEM 3 IN CENTER HOLE OF ITEM 4. INSTALL COVER OF ITEM 4 WITH RIDGE ON SAME SIDE AS WIDE SPACED (R & G) PINS.
- SUPPLY ITEM 5 LOOSE WITH SET.
- ARRANGE SET FOR 20 mA, FULL DUPLEX OPERATION AS FOLLOWS:
A. MOVE PURPLE WIRE FROM TERMINAL 8 TO TERMINAL 9 ON TERMINAL STRIP 151411 (X).
B. MOVE W-BL WIRE FROM TERMINAL 4 TO TERMINAL 5.
C. MOVE BR-Y WIRE FROM TERMINAL 3 TO TERMINAL 5.
D. MOVE BL WIRE FROM TERMINAL 3 TO TERMINAL 4 OF 181816 POWER RESISTOR (CH).
- STRAIN RELIEVE ITEM 3 BY PLACING S-HOOK UNDER SCREW. CONNECT LONG LEAD END OF ITEM 3 TO TERMINAL STRIP OF ITEM 1 AS FOLLOWS:

| ITEM 3 | TERMINAL STRIP (X) |
|--------|--------------------|
| RED | 3 |
| GREEN | 4 |
| BLACK | 7 |
| YELLOW | 6 |
- CUT ITEM 7 APPROX 12 INCHES FROM FEMALE END. WIRE TO ITEM 8 AS FOLLOWS:
BOTH GREEN WIRES FRAME
BOTH WHITE WIRES C
FEMALE BLACK WIRE 6
MALE BLACK WIRE 1
PAINT MALE END OF CORD RED.
MOUNT ITEMS 7 AND 8 IN TELETYPE BASE WHEN REQUIRED (240 V OPERATION) USING ITEMS 12 THRU 15.
- REPLACE FURNISHED MOTOR UNIT AND GEAR SET WITH ITEMS 8 AND 9 FOR 50 HZ OPERATION.
- ADJUST FORM FEED MECHANISM FOR 11 INCH FORMS.

SEE NOTE 2
SEE NOTE 11
SEE NOTE 9
SEE NOTES 6 & 7
SEE NOTE 6
SEE NOTE 3
SEE NOTE 1
SEE NOTE 8
SEE NOTE 8

FRONT OF TELETYPE
1-1/2
3-1/8 ± 1/16
7
3 ± 1/32
REAR OF TELETYPE
SCALE: NONE

HOLE DRILLING DIAGRAM FOR MOUNTING OF TRANSFORMER ITEM #6 TO PLATE INSIDE BOTTOM OF BASE

12 INCHES APPROX
10 FEET APPROX
PAINT RED

DEC FORM NO. DFD 102A

REV. CHG. NO. REV. A LT33-00002 7-15-71 A.K.E.T. Allen Kent 26 July 71 LT33-00003 B CM-Gustin 10-22-71 A.K.E.T. Allen Kent 28 Oct 71

FIRST USED ON OPTION / MODEL PDPIQ QTY. DESCRIPTION PART NO. ITEM NO.

UNLESS OTHERWISE SPECIFIED DRN. DATE 9/25/67
UNLESS OTHERWISE SPECIFIED DIMENSION IN INCHES CHK'D. DATE 1/21/70
TOLERANCES DECIMALS FRACTIONS ANGLES = .005 ± 1/64 ± 0°30' = FINAL SURFACE QUALITY REMOVE BURRS AND BREAK SHARP CORNERS ENG. DATE 10/28/70 PROJ. ENG. DATE 30/28/70 PROD. DATE 2-9-70

MATERIAL NEXT HIGHER ASSY A-ML-LT33-BA-0
FINISH SCALE NONE SHEET 1 OF 1

PARTS LIST TITLE TIMESHARING TELETYPE 33 ASR (TY)
SIZE CODE NUMBER REV. DUA LT33-B-0
DIST. C

NOTES:

1. REPLACE FURNISHED TYPING CYLINDER WITH SLASHED ZEPG TYPING CYLINDER. "ME" PART NO. 2911511. TTY. PART NO. 183599.
2. DO NOT DISABE FORM FEED, WRU (ENQ), X-ON (DC₁), X-OFF (DC₃), TAPE ON (DC₂) OR TAPE OFF (DC₄) FEATURES FROM STUNT BOX.
3. DO NOT REMOVE PARITY GENERATION FROM KEYBOARD.
4. WIRE SHORT LEAD END OF ITEM 3 TO ITEM 4 AS FOLLOWS:

| ITEM 3 | ITEM 4 |
|--------|--------|
| RED | R |
| GREEN | G |
| BLACK | B |
| YELLOW | Y |

INSERT EARBAND TAB OF ITEM 3 IN CENTER HOLE OF ITEM 4. INSTALL COVER OF ITEM 4 WITH RIDGE ON SAME SIDE AS WIDE SPACED (R & G) PINS.
5. SUPPLY ITEM 5 LOOSE WITH SET.
6. ARRANGE SET FOR 20 mA, FULL DUPLEX OPERATION AS FOLLOWS:
 - A. MOVE PURPLE WIRE FROM TERMINAL 8 TO TERMINAL 9 ON TERMINAL STRIP 151411 (X).
 - B. MOVE W-BL WIRE FROM TERMINAL 4 TO TERMINAL 5
 - C. MOVE BR-Y WIRE FROM TERMINAL 3 TO TERMINAL 5
 - D. MOVE BL WIRE FROM TERMINAL 3 TO TERMINAL 4 OF 181816 POWER RESISTOR (CH).
7. STRAIN RELIEVE ITEM 3 BY PLACING S-HOOK UNDER SCREW. CONNECT LONG LEAD END OF ITEM 3 TO TERMINAL STRIP OF ITEM 1 AS FOLLOWS:

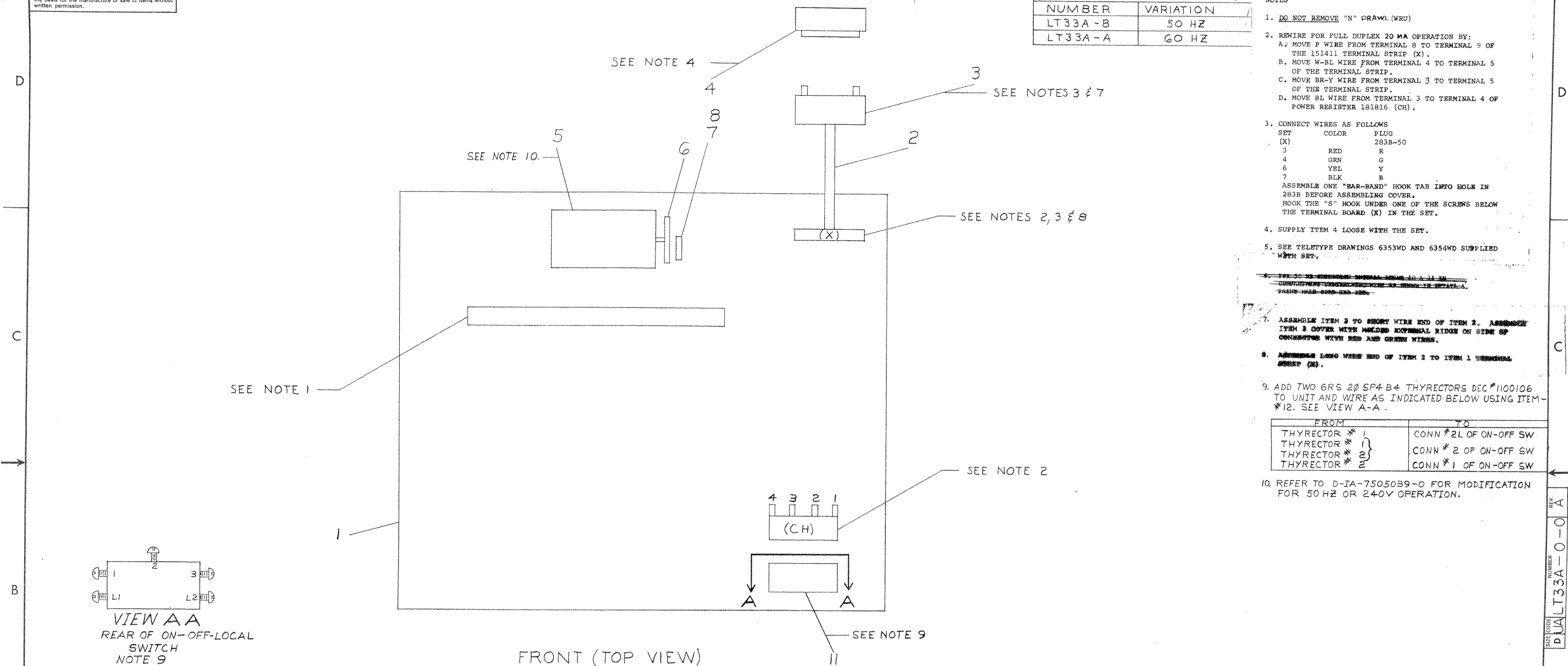
| ITEM 3 | TERMINAL STRIP (X) |
|--------|--------------------|
| RED | 3 |
| GREEN | 4 |
| BLACK | 7 |
| YELLOW | 6 |
8. CUT ITEM 7 APPROX 12 INCHES FROM FEMALE END. WIRE TO ITEM 6 AS FOLLOWS:

| | |
|-------------------|-------|
| BOTH GREEN WIRES | FRAME |
| BOTH WHITE WIRES | C |
| FEMALE BLACK WIRE | 6 |
| MALE BLACK WIRE | 1 |

PAINT MALE END OF CORD RED.
MOUNT ITEMS 7 AND 8 IN TELETYPE BASE WHEN REQUIRED (240 V OPERATION) USING ITEMS 12 THRU 15.
9. REPLACE FURNISHED MOTOR UNIT AND GEAR SET WITH ITEMS 8 AND 9 FOR 50 HZ OPERATION.
10. ADJUST FORM FEED MECHANISM FOR 11 INCH FORMS.

| | | | | | | | | | |
|--------------------------------------|--|-----------------------|--|---------------|--|--|--|----------|--|
| FIRST USED ON OPTION / MODEL | | QTY. | | DESCRIPTION | | PART NO. | | ITEM NO. | |
| PDP10 | | | | | | | | | |
| UNLESS OTHERWISE SPECIFIED | | DRN. Thompson | | DATE 9/25/70 | | digital EQUIPMENT CORPORATION MAYNARD MASSACHUSETTS | | | |
| UNLESS OTHERWISE SPECIFIED | | CHK'D. J. Bailey | | DATE 1/21/70 | | TITLE TIMESHARING TELETYPE 33 ASR (TY) | | | |
| DIMENSION IN INCHES | | ENG. Allen Kent | | DATE 10/10/70 | | | | | |
| TOLERANCES | | PROJ. ENG. Allen Kent | | DATE 10/10/70 | | | | | |
| DECIMALS FRACTIONS ANGLES | | PROD. W. M. Allen | | DATE 2-9-70 | | | | | |
| = .005 = 1/64 = 0°30' | | | | | | | | | |
| FINAL SURFACE QUALITY | | | | | | | | | |
| REMOVE BURRS AND BREAK SHARP CORNERS | | | | | | | | | |
| MATERIAL | | NEXT HIGHER ASSY | | | | | | | |
| --11-- | | A-ML-LT33-BA-O | | SIZE/ CODE | | NUMBER | | REV | |
| | | | | D/UA | | LT33-B-O | | 1 | |
| FINISH | | SCALE NONE | | SHEET | | DIST | | | |
| --11-- | | | | 1 OF 1 | | | | | |

This drawing and specifications, herein, are the property of Digital Equipment Corporation and shall not be reproduced or copied or used in whole or in part as the basis for the manufacture or sale of items without written permission.



| LEGEND | |
|---------|-----------|
| NUMBER | VARIATION |
| LT33A-B | 50 HZ |
| LT33A-A | 60 HZ |

NOTES

1. DO NOT REMOVE "N" PRAWI (WRU)
2. REWIRE FOR FULL DUPLEX 20 MA OPERATION BY:
 - A. MOVE P WIRE FROM TERMINAL 8 TO TERMINAL 9 OF THE 154111 TERMINAL STRIP (X).
 - B. MOVE W-BL WIRE FROM TERMINAL 4 TO TERMINAL 5 OF THE TERMINAL STRIP.
 - C. MOVE BR-WHITE WIRE FROM 3 TO TERMINAL 5 OF THE TERMINAL STRIP.
 - D. MOVE BL WIRE FROM TERMINAL 3 TO TERMINAL 4 OF POWER RESISTOR 181816 (CH).

3. CONNECT WIRES AS FOLLOWS

| SET (X) | COLOR | PLUG 283B-50 |
|------------|-------|-----------------|
| 3 | RED | R |
| 4 | GRN | G |
| 6 | YEL | Y |
| 7 | BLK | B |

ASSEMBLE ONE "EAR-BAND" HOOK TAB INTO HOLE IN
283B BEFORE ASSEMBLING COVER.
HOOK THE "S" HOOK UNDER ONE OF THE SCREWS BELOW
THE TERMINAL BOARD (X) IN THE SET.

4. SUPPLY ITEM 4 LOOSE WITH THE SET.

5. SEE TELETYPE DRAWINGS 6353WD AND 6354WD SUPPLIED WITH SET.

~~FOR NO REASON, SUBJECTS FEELING TO A 12 IN~~
~~DISAPPOINTMENT DURING THE 1970S IN WHICH THE 1970-71 A~~
~~PAINE WOULD HAVE BEEN THE~~

7. ASSEMBLE ITEM 3 TO SHORT WIRE END OF ITEM 2. ASSEMBLE
ITEM 3 COVER WITH MOLDED EXTERNAL RIDGE ON SIDE OF
CONNECTOR WITH RED AND GREEN WIRES.

8. APPROXIMATE LONG WIRE END OF ITEM 2 TO ITEM 1 TERMINAL
START (S).



9. ADD TWO 6RS 2Ø SP4 B4 THYRECTORS DEC #1100106
TO UNIT AND WIRE AS INDICATED BELOW USING ITEM-
*12. SEE VIEW A-A.


| FROM | TO |
|---------------|------------------------|
| THYRECTOR * 1 | CONN * 2L OF ON-OFF SW |
| THYRECTOR * 1 | |
| THYRECTOR * 2 | CONN * 2 OF ON-OFF SW |
| THYRECTOR * 2 | CONN * 1 OF ON-OFF SW |

10. REFER TO D-IA-7505039-0 FOR MODIFICATION
FOR 50 HZ OR 240V OPERATION.

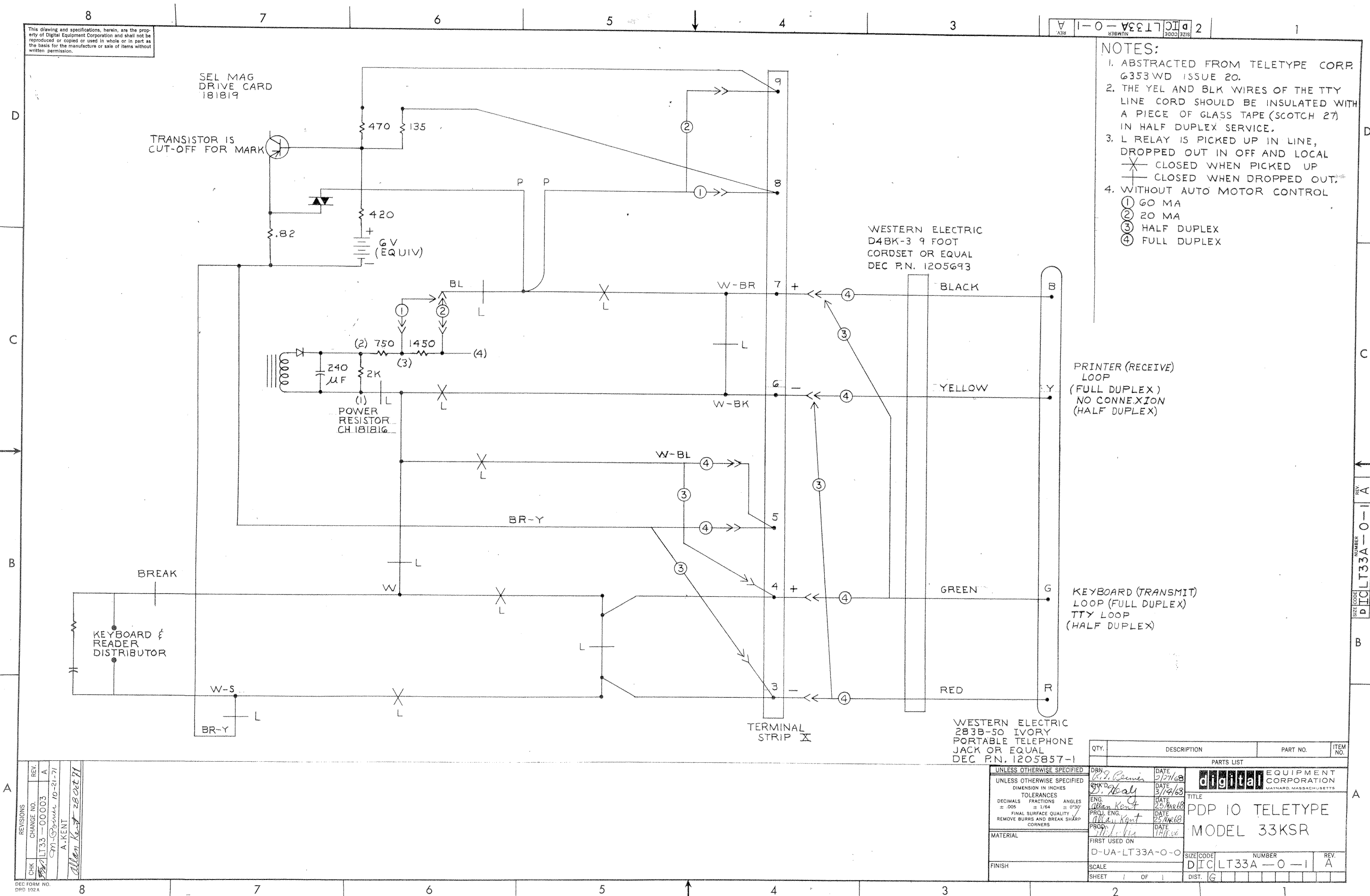
| REVIEWS | | |
|-----------------------------|------------|------|
| CHK | CHANGE NO. | REV. |
| <i>[Signature]</i> | LT33-00003 | A |
| <i>M. Oliver 10-21-71</i> | | |
| A.KENT | | |
| <i>Allen Kent 28 Oct 71</i> | | |

DEC FORM NO.
DRD 100

| | | |
|---|-----------|---------|
| UNLESS OTHERWISE SPECIFIED | | |
| UNLESS OTHERWISE SPECIFIED | | |
| DIMENSION IN INCHES | | |
| TOLERANCES | | |
| DECIMALS | FRACTIONS | ANGLES |
| ± .005 | ± 1/64 | ± 0°30' |
| FINAL SURFACE QUALITY | | |
| REMOVE BURRS AND BREAK SHARP CORNERS | | |
| MATERIAL | | |
|  | | |
| FINISH | | |
|  | | |

| QTY. | DESCRIPTION | PART NO. | ITEM NO. | |
|-----------------------------|-----------------------|--|----------------------------|--------------------------------------|
| PARTS LIST | | | | |
| DRN. <i>Person</i> | DATE <i>1/3/68</i> |  DIGITAL EQUIPMENT CORPORATION MAYNARD, MASSACHUSETTS | | |
| CHKD. <i>J. Kent</i> | DATE <i>2-7-68</i> | | | TITLE PDP 10 TELETYPE 33KSR |
| ENG. <i>Alan Kent</i> | DATE <i>25 MAR 68</i> | | | |
| PROD. ENG. <i>Alan Kent</i> | DATE <i>25 MAR 68</i> | | | |
| PRD. <i>Mike Kent</i> | DATE <i>1 APR 68</i> | | | |
| FIRST USED ON <i>4-1</i> | | | | |
| SCALE <i>NONE</i> | SHEET <i>OF</i> | SIZE CODE <i>DUAL</i> | NUMBER <i>LT33A-0-0</i> | REV. <i>A</i> |
| | | DIST. <i>G</i> | | |

| | | | | | | | | | | | | | | | | |
|---|------------|------------------------------|--------------------------------|-----------------|--|--|--|--|--|--|--|--|------------------------------|------------|--------------|------|
| DIGITAL EQUIPMENT CORPORATION MAYNARD, MASSACHUSETTS | | | QUANTITY | | | | | | | | | | REVISIONS | | | |
| PARTS LIST | | | LT33A-0-0 50 HZ | LT33A-A-0 40 HZ | | | | | | | | | | CHANGE NO. | DATE | ENG. |
| | | | | | | | | | | | | | | LT33-00003 | 2/20/71 | HL |
| | | | | | | | | | | | | | | | | |
| ITEM NO. | DWG. NO. | DESCRIPTION | | | | | | | | | | | | | | |
| 1 | | TELETYPE 33TS | 1 | 1 | | | | | | | | | | | | |
| 2 | 1205693 | CORD SET | 1 | 1 | | | | | | | | | | | | |
| 3 | 1205857-1 | TELEPHONE PLUG 283B-50 | 1 | 1 | | | | | | | | | | | | |
| 4 | 1205857-2 | TELEPHONE JACK 404B-50 | 1 | 1 | | | | | | | | | | | | |
| 5 | 1204789 | MOTOR 182267 50HZ | 1 | | | | | | | | | | | | | |
| 6 | 1204850 | DRIVE GEAR 181855 | 1 | | | | | | | | | | | | | |
| 7 | 1204849 | PISTON GEAR 181851 | 1 | | | | | | | | | | | | | |
| 8 | 1204848 | PISTON 181850 | 1 | | | | | | | | | | | | | |
| 9 | 1609313 | ELECT TRANSFORMER 1725 | 1 | | | | | | | | | | | | | |
| 10 | 9107673-12 | LINE CORD 12 FT | 1 | | | | | | | | | | | | | |
| 11 | 1100106 | GE THYRECTOR 6RS20SP4B4 | 2 | 2 | | | | | | | | | | | | |
| 12 | 9007929 | SOLDERLESS CONN #6 AWG 18-22 | 3 | 3 | | | | | | | | | | | | |
| | | | | | | | | | | | | | | | | |
| | | | | | | | | | | | | | | | | |
| MADE BY R. BERNIER | | DATE 1/3/68 | TITLE PDP-10 TELETYPE 33TSR | | | | | | | | | | DRWG. NO. A-PL- LT33A-0-0 | | REV. LTR | |
| CHECKED D. HEALY | | DATE 3/12/68 | FOR | | | | | | | | | | ASSY NO PDP-10-33A-0-0 | | SHEET 1 OF 1 | |
| ENG Allan Kent | | DATE 25 MAR 68 | | | | | | | | | | | | | A | |



NOTES:

1. ABSTRACTED FROM TELETYPE CORR. G353WD ISSUE 20.
2. THE YEL AND BLK WIRES OF THE TTY LINE CORD SHOULD BE INSULATED WITH A PIECE OF GLASS TAPE (SCOTCH 27) IN HALF DUPLEX SERVICE.
3. L RELAY IS PICKED UP IN LINE, DROPPED OUT IN OFF AND LOCAL
~~X~~ CLOSED WHEN PICKED UP
~~+~~ CLOSED WHEN DROPPED OUT.
4. WITHOUT AUTO MOTOR CONTROL
 - ① GO MA
 - ② 20 MA
 - ③ HALF DUPLEX
 - ④ FULL DUPLEX

PRINTER (RECEIVE)
LOOP
(FULL DUPLEX)
NO CONNEXION
(HALF DUPLEX)

KEYBOARD (TRANSMIT)
LOOP (FULL DUPLEX)
TTY LOOP
(HALF DUPLEX)

WESTERN ELECTRIC
283B-50 IVORY
PORTABLE TELEPHONE
JACK OR EQUAL
DEC PN. 1205857-1

| | | | | | | |
|--------------------------------------|-----------|----------------|-----------|---------------|-------------------------------|--|
| UNLESS OTHERWISE SPECIFIED | | DRN | DATE | | PARTS LIST | |
| UNLESS OTHERWISE SPECIFIED | | Q. 2 | 3/17/68 | | digital EQUIPMENT CORPORATION | |
| DIMENSION IN INCHES | | Q.H.D. | 3/17/68 | | MAYNARD, MASSACHUSETTS | |
| TOLERANCES | | ENG. | DATE | | TITLE | |
| DECIMALS | FRACTIONS | ± .005 | 25 MAR 68 | | PDP 10 TELETYPE | |
| ± 1/64 ± 0°30' | | PROJ. ENG. | DATE | | MODEL 33KSR | |
| FINAL SURFACE QUALITY | | Q.H.D. | 3/17/68 | | | |
| REMOVE BURRS AND BREAK SHARP CORNERS | | PROD. | 3/17/68 | | | |
| MATERIAL | | FIRST USED ON | | SIZE CODE | | |
| | | D-UA-LT33A-O-O | | NUMBER | | |
| FINISH | | SCALE | | REV | | |
| | | SHEET | | DTC LT33A-O-I | | |
| | | OF | | A | | |