

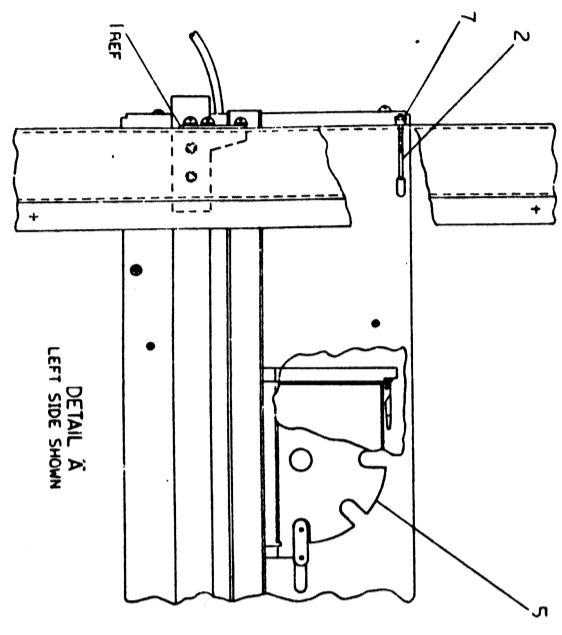
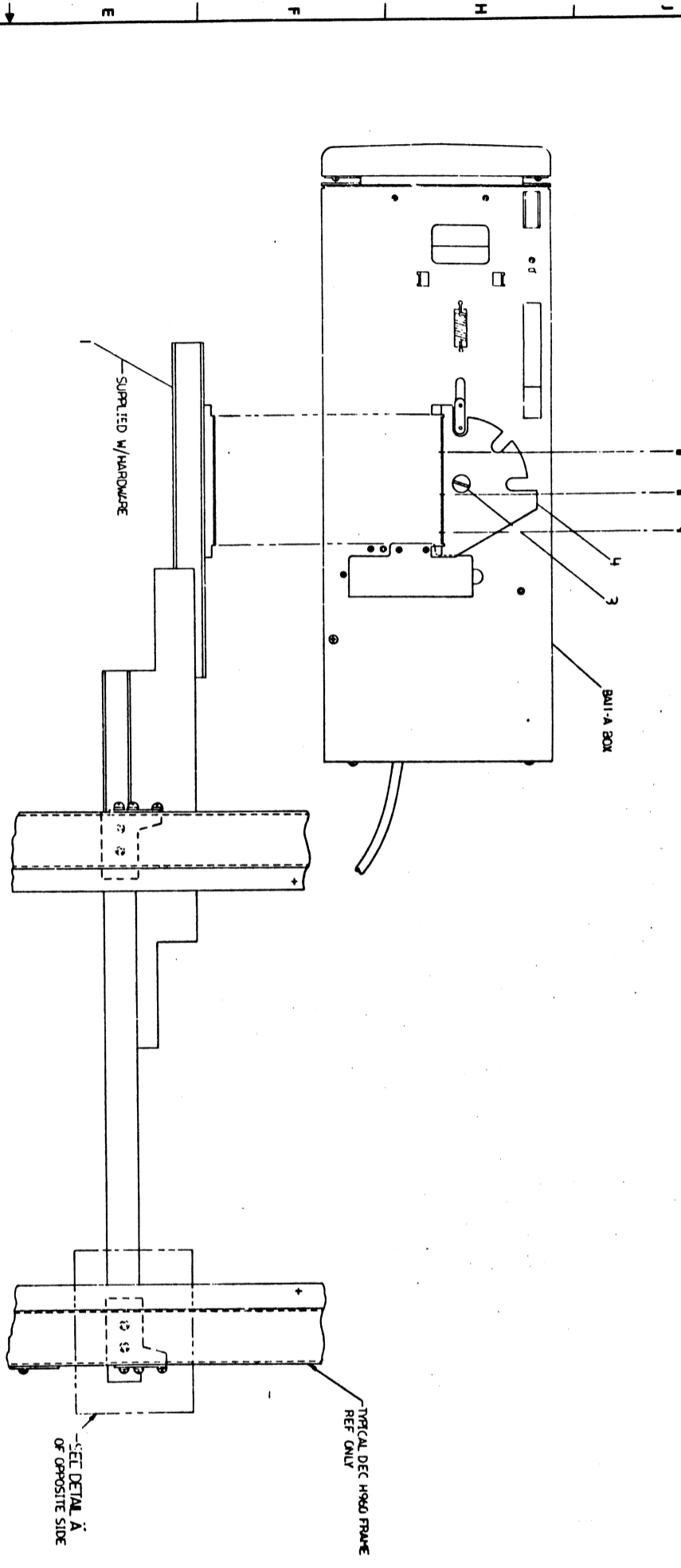




THIS DRAWING IS THE PROPERTY OF THE U.S. GOVERNMENT AND IS TO BE REPRODUCED AND TRANSMITTED IN ANY FORM AND BY ANY MEANS, ELECTRONIC OR MECHANICAL, INCLUDING PHOTOCOPYING, RECORDING, OR BY ANY INFORMATION STORAGE AND RETRIEVAL SYSTEM, WITHOUT PERMISSION IN WRITING FROM THE U.S. GOVERNMENT PRINTING OFFICE.

U.S. GOVERNMENT PRINTING OFFICE: 1964 O-544-544

NOTE:  
1. SEE SYSTEM ARRANGEMENT DRAWING FOR EXACT MOUNTING LOCATION.



CAUTION: SEE SHEETS PARTS LIST SEE K-R-10914-0-DBP (20875)

DATE	REVISION HISTORY	NO.	BY

DESCRIPTION	QUANTITY	UNIT	REMARKS
BA11-A SLIDE MOUNT	1	EA	
TRICAL DEC H960 FRAME	1	EA	
SUPPLIED W/HARDWARE	1	EA	
SPRING	1	EA	
LOCKING PIN	1	EA	
SCREW	2	EA	
WASHER	2	EA	
SPACER	2	EA	
PLATE	2	EA	
BRACKET	2	EA	
WASHER	2	EA	
SCREW	2	EA	
SPACER	2	EA	
PLATE	2	EA	
BRACKET	2	EA	
WASHER	2	EA	
SCREW	2	EA	
SPACER	2	EA	
PLATE	2	EA	
BRACKET	2	EA	
WASHER	2	EA	
SCREW	2	EA	
SPACER	2	EA	
PLATE	2	EA	
BRACKET	2	EA	
WASHER	2	EA	
SCREW	2	EA	
SPACER	2	EA	
PLATE	2	EA	
BRACKET	2	EA	
WASHER	2	EA	
SCREW	2	EA	
SPACER	2	EA	
PLATE	2	EA	
BRACKET	2	EA	
WASHER	2	EA	
SCREW	2	EA	
SPACER	2	EA	
PLATE	2	EA	
BRACKET	2	EA	
WASHER	2	EA	
SCREW	2	EA	
SPACER	2	EA	
PLATE	2	EA	
BRACKET	2	EA	
WASHER	2	EA	
SCREW	2	EA	
SPACER	2	EA	
PLATE	2	EA	
BRACKET	2	EA	
WASHER	2	EA	
SCREW	2	EA	
SPACER	2	EA	
PLATE	2	EA	
BRACKET	2	EA	
WASHER	2	EA	
SCREW	2	EA	
SPACER	2	EA	
PLATE	2	EA	
BRACKET	2	EA	
WASHER	2	EA	
SCREW	2	EA	
SPACER	2	EA	
PLATE	2	EA	
BRACKET	2	EA	
WASHER	2	EA	
SCREW	2	EA	
SPACER	2	EA	
PLATE	2	EA	
BRACKET	2	EA	
WASHER	2	EA	
SCREW	2	EA	
SPACER	2	EA	
PLATE	2	EA	
BRACKET	2	EA	
WASHER	2	EA	
SCREW	2	EA	
SPACER	2	EA	
PLATE	2	EA	
BRACKET	2	EA	
WASHER	2	EA	
SCREW	2	EA	
SPACER	2	EA	
PLATE	2	EA	
BRACKET	2	EA	
WASHER	2	EA	
SCREW	2	EA	
SPACER	2	EA	
PLATE	2	EA	
BRACKET	2	EA	
WASHER	2	EA	
SCREW	2	EA	
SPACER	2	EA	
PLATE	2	EA	
BRACKET	2	EA	
WASHER	2	EA	
SCREW	2	EA	
SPACER	2	EA	
PLATE	2	EA	
BRACKET	2	EA	
WASHER	2	EA	
SCREW	2	EA	
SPACER	2	EA	
PLATE	2	EA	
BRACKET	2	EA	
WASHER	2	EA	
SCREW	2	EA	
SPACER	2	EA	
PLATE	2	EA	
BRACKET	2	EA	
WASHER	2	EA	
SCREW	2	EA	
SPACER	2	EA	
PLATE	2	EA	
BRACKET	2	EA	
WASHER	2	EA	
SCREW	2	EA	
SPACER	2	EA	
PLATE	2	EA	
BRACKET	2	EA	
WASHER	2	EA	
SCREW	2	EA	
SPACER	2	EA	
PLATE	2	EA	
BRACKET	2	EA	
WASHER	2	EA	
SCREW	2	EA	
SPACER	2	EA	
PLATE	2	EA	
BRACKET	2	EA	
WASHER	2	EA	
SCREW	2	EA	
SPACER	2	EA	
PLATE	2	EA	
BRACKET	2	EA	
WASHER	2	EA	
SCREW	2	EA	
SPACER	2	EA	
PLATE	2	EA	
BRACKET	2	EA	
WASHER	2	EA	
SCREW	2	EA	
SPACER	2	EA	
PLATE	2	EA	
BRACKET	2	EA	
WASHER	2	EA	
SCREW	2	EA	
SPACER	2	EA	
PLATE	2	EA	
BRACKET	2	EA	
WASHER	2	EA	
SCREW	2	EA	
SPACER	2	EA	
PLATE	2	EA	
BRACKET	2	EA	
WASHER	2	EA	
SCREW	2	EA	
SPACER	2	EA	
PLATE	2	EA	
BRACKET	2	EA	
WASHER	2	EA	
SCREW	2	EA	
SPACER	2	EA	
PLATE	2	EA	
BRACKET	2	EA	
WASHER	2	EA	
SCREW	2	EA	
SPACER	2	EA	
PLATE	2	EA	
BRACKET	2	EA	
WASHER	2	EA	
SCREW	2	EA	
SPACER	2	EA	
PLATE	2	EA	
BRACKET	2	EA	
WASHER	2	EA	
SCREW	2	EA	
SPACER	2	EA	
PLATE	2	EA	
BRACKET	2	EA	
WASHER	2	EA	
SCREW	2	EA	
SPACER	2	EA	
PLATE	2	EA	
BRACKET	2	EA	
WASHER	2	EA	
SCREW	2	EA	
SPACER	2	EA	
PLATE	2	EA	
BRACKET	2	EA	
WASHER	2	EA	
SCREW	2	EA	
SPACER	2	EA	
PLATE	2	EA	
BRACKET	2	EA	
WASHER	2	EA	
SCREW	2	EA	
SPACER	2	EA	
PLATE	2	EA	
BRACKET	2	EA	
WASHER	2	EA	
SCREW	2	EA	
SPACER	2	EA	
PLATE	2	EA	
BRACKET	2	EA	
WASHER	2	EA	
SCREW	2	EA	
SPACER	2	EA	
PLATE	2	EA	
BRACKET	2	EA	
WASHER	2	EA	
SCREW	2	EA	
SPACER	2	EA	
PLATE	2	EA	
BRACKET	2	EA	
WASHER	2	EA	
SCREW	2	EA	
SPACER	2	EA	
PLATE	2	EA	
BRACKET	2	EA	
WASHER	2	EA	
SCREW	2	EA	
SPACER	2	EA	
PLATE	2	EA	
BRACKET	2	EA	
WASHER	2	EA	
SCREW	2	EA	
SPACER	2	EA	
PLATE	2	EA	
BRACKET	2	EA	
WASHER	2	EA	
SCREW	2	EA	
SPACER	2	EA	
PLATE	2	EA	
BRACKET	2	EA	
WASHER	2	EA	
SCREW	2	EA	
SPACER	2	EA	
PLATE	2	EA	
BRACKET	2	EA	
WASHER	2	EA	
SCREW	2	EA	
SPACER	2	EA	
PLATE	2	EA	
BRACKET	2	EA	
WASHER	2	EA	
SCREW	2	EA	
SPACER	2	EA	
PLATE	2	EA	
BRACKET	2	EA	
WASHER	2	EA	
SCREW	2	EA	
SPACER	2	EA	
PLATE	2	EA	
BRACKET	2	EA	
WASHER	2	EA	
SCREW	2	EA	
SPACER	2	EA	
PLATE	2	EA	
BRACKET	2	EA	
WASHER	2	EA	
SCREW	2	EA	
SPACER	2	EA	
PLATE	2	EA	
BRACKET	2	EA	
WASHER	2	EA	
SCREW	2	EA	
SPACER	2	EA	
PLATE	2	EA	
BRACKET	2	EA	
WASHER	2	EA	
SCREW	2	EA	
SPACER	2	EA	
PLATE	2	EA	
BRACKET	2	EA	
WASHER	2	EA	
SCREW	2	EA	
SPACER	2	EA	
PLATE	2	EA	
BRACKET	2	EA	
WASHER	2	EA	
SCREW	2	EA	
SPACER	2	EA	
PLATE	2	EA	
BRACKET	2	EA	
WASHER	2	EA	
SCREW	2	EA	
SPACER	2	EA	
PLATE	2	EA	
BRACKET	2	EA	
WASHER	2	EA	
SCREW	2	EA	
SPACER	2	EA	
PLATE	2	EA	
BRACKET	2	EA	
WASHER	2	EA	
SCREW	2	EA	
SPACER	2	EA	
PLATE	2	EA	
BRACKET	2	EA	
WASHER	2	EA	
SCREW	2	EA	
SPACER	2	EA	
PLATE	2	EA	
BRACKET	2	EA	
WASHER	2	EA	
SCREW	2	EA	
SPACER	2	EA	
PLATE	2	EA	
BRACKET	2	EA	
WASHER	2	EA	
SCREW	2	EA	
SPACER	2	EA	
PLATE	2	EA	
BRACKET	2	EA	
WASHER	2	EA	
SCREW	2	EA	
SPACER	2	EA	
PLATE	2	EA	
BRACKET	2	EA	
WASHER	2	EA	
SCREW	2	EA	
SPACER	2	EA	
PLATE	2	EA	
BRACKET	2	EA	
WASHER	2	EA	
SCREW	2	EA	
SPACER	2	EA	
PLATE	2	EA	
BRACKET	2	EA	
WASHER	2	EA	
SCREW	2	EA	
SPACER	2	EA	
PLATE	2	EA	
BRACKET	2	EA	
WASHER	2	EA	
SCREW	2	EA	
SPACER	2	EA	
PLATE			

"The material herein is for information purposes only and is subject to change without notice. Digital Equipment Corporation assumes no responsibility for any errors which may appear herein."

DRAWING DIRECTORY

"This drawing and specifications, herein, are the property of Digital Equipment Corporation and shall not be reproduced or copied or used in whole or in part as the basis for the manufacture or sale of items without written permission.  
Copyright (C) 1980 Digital Equipment Corporation"

FOR FIELD MAINTAINANCE PRINT SET REFER TO B-TC-H9544-MG-2

UNIT VARIATIONS

VAR H9544-MG

TITLE

BA11-A SLIDE KIT

Revision History

Eng ECO Number REV A  
Used on Option/Model BA11-A

Responsible Eng. : J KRATOSKA  
Date : 18 AUGUST 81

Made By : J SULLIVAN  
Date : 18 AUGUST 81

Checked By : J SULLIVAN  
Date : 18 AUGUST 81

Design Engineer : R BOUDREAU  
Date : 18 AUGUST 81

Production Eng. : B GINSBERG  
Date : 18 AUGUST 81

D I G I T A L

TITLE DRAWING DIRECTORY  
BA11-A SLIDE KIT

SIZE CODE DOCUMENT NUMBER REV.  
K DD H9544-MG-0 A

Sheet 1 of 2 | Edit # 0001

F  
I  
N  
D

T  
Y  
P  
E

F  
I  
N  
D

T  
Y  
P  
E

# DRAWING NUMBER	DESCRIPTION	T Y P E
1. MP01265 BA111-A SLIDE KIT (MP)		-
B-TC-H9544-MG-2 BA111-A SLIDE KIT (TC)		M
E-AD-H9544-MG-0 BA111-A SLIDE MTG		M
K-PL-H9544-MG-DBP BA111-A SLIDE KIT (KPL)		M
E-PS-1216971-0-0 CHASSIS SLIDE FOR BA111-A		M
C-MD-7413659-0-0 BRACKET SHIPPING		M
B-PS-1216197-0-0 SCREW, PIVOT		M
D-MD-7412613-0-0 SLIDE INDEX PLATE		M
A-SP-3700471-0-0 INSTR PKG SLIDES 1144-CA, CB		M

Type:	D	I	G	I	T	A	L	TITLE	DRAWING DIRECTORY	SIZE	CODE	DOCUMENT NUMBER	REV.
E Electrical								BA111-A SLIDE KIT		K	DD	H9544-MG-0	A
M Mechanical													
E/M Electro/Mechanical										Sheet 2 of 2		Edit # 0001	

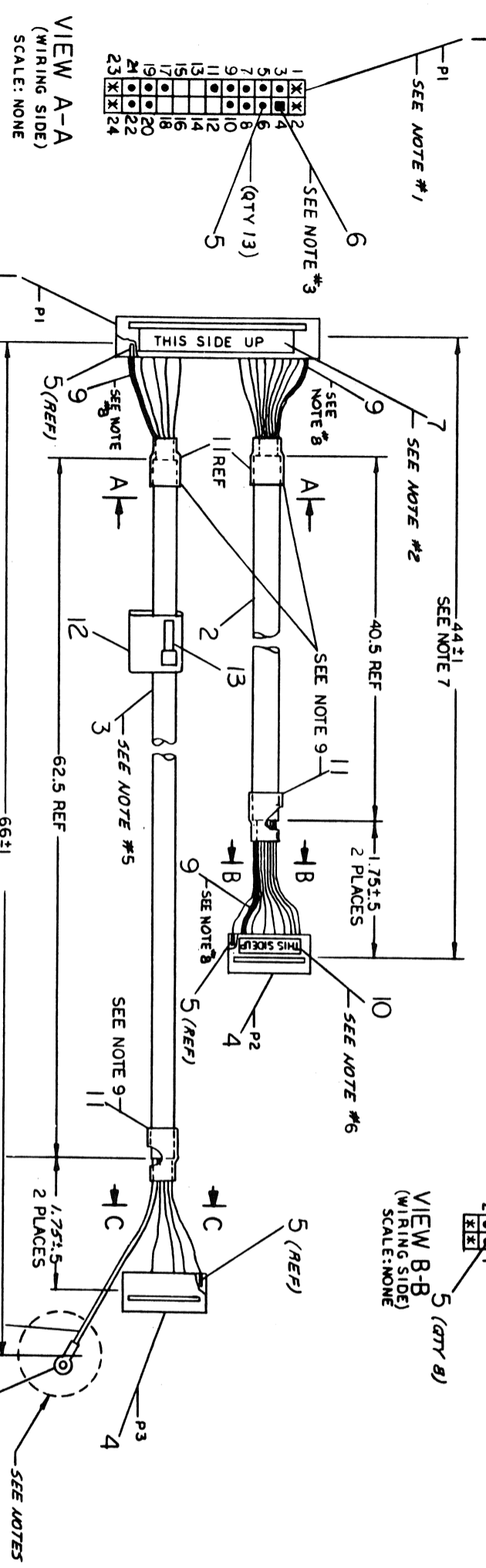


THIS DRAWING AND ASSOCIATED GENERAL AND SPECIAL NOTES ARE THE PROPERTY OF THE U.S. GOVERNMENT AND ARE TO BE REPRODUCED OR TRANSMITTED IN ANY FORM OR BY ANY MEANS, ELECTRONIC OR MECHANICAL, INCLUDING PHOTOCOPYING, RECORDING, OR BY ANY INFORMATION STORAGE AND RETRIEVAL SYSTEM, WITHOUT PERMISSION IN WRITING FROM THE U.S. GOVERNMENT PRINTING OFFICE: 1983 O-21859101

WIRE TABLE						
ITEM NO.	DESCRIPTION	FROM	TO	REMARKS		
2	24 DRAIN	P1-3	ITEM 5	SEE NOTE 8		
2	24 RED	P1-5	ITEM 5			
2	24 WHT	P1-6	ITEM 5			
2	24 GRN	P1-1	ITEM 5			
2	24 BLK	P1-8	ITEM 5			
2	24 BRN	P1-9	ITEM 5			
2	24 ORN	P1-10	ITEM 5			
2	24 BLU	P1-11	ITEM 5			
3	24 BLK	P1-17	ITEM 5			
3	24 GRN	P1-19	ITEM 5			
3	24 WHT	P1-20	ITEM 5			
3	24 RED	P1-21	ITEM 5			
3	24 DRAIN	P1-22	ITEM 8	SEE NOTES 4, 8		

LEGEND	
VARIATION	USED WITH
00	5413671 CONSOLE MODULE
01	5414441 CONSOLE MODULE

- NOTES:**
1. LOCATIONS MARKED (A) IN VIEWS A-A, B-B AND C-C ARE NOT TO BE USED.
  2. PLACE LABEL (ITEM #7) ON SIDE AS SHOWN FOR VAR: 00 ONLY, FOR VAR: 01, PLACE ON OPPOSITE SIDE OF CONN. P1.
  3. FOR VAR: 00 ONLY, CONNS. P1-4, P2-6, P3-6 (ITEM 4) SHALL HAVE ONE KEY (ITEM 6) INSERTED AS SHOWN. FOR VAR: 01, CONNS. P2-6, P3-6 (ITEM 4) SHALL HAVE ONE KEY (ITEM 6) INSERTED AS SHOWN.
  4. SLIDE EXTRUDED TUBING (ITEM #9) OVER DRAIN WIRE, WHERE IT BREAKS OUT OF CABLE AS REQUIRED.
  5. WIRE FROM P1-22 TO ITEM #8 SHALL BE MADE 1 INCH LONGER THAN WIRES FROM P1 TO P3.
  6. LOCATE LABEL (ITEM #10) AS SHOWN ON CONNECTOR P2 (ITEM #4)
  7. CUT LENGTH
  8. SLIDE EXTRUDED TUBING (ITEM 9) OVER DRAIN WIRE BEFORE CRIMPING CONTACTS P2-3, P1-3, P1-22.
  9. INSTALL SHRINK TUBING (ITEM #11) APPROX 1 INCH LONG, OVERLAPPING CABLE JACKET
  10. CONN P1-19 AND P1-3 (ITEM 1) SHALL HAVE TWO KEYS (ITEM 6) INSERTED AS SHOWN.

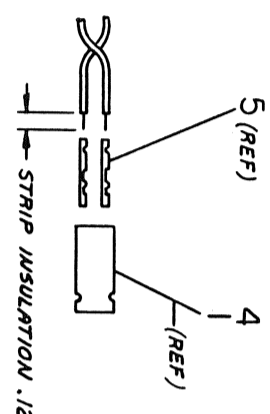


VIEW A-A  
(WIRING SIDE)  
SCALE: NONE

VIEW B-B  
(WIRING SIDE)  
SCALE: NONE

VIEW C-C  
(WIRING SIDE)  
SCALE: NONE

VARIATION: 00 ONLY



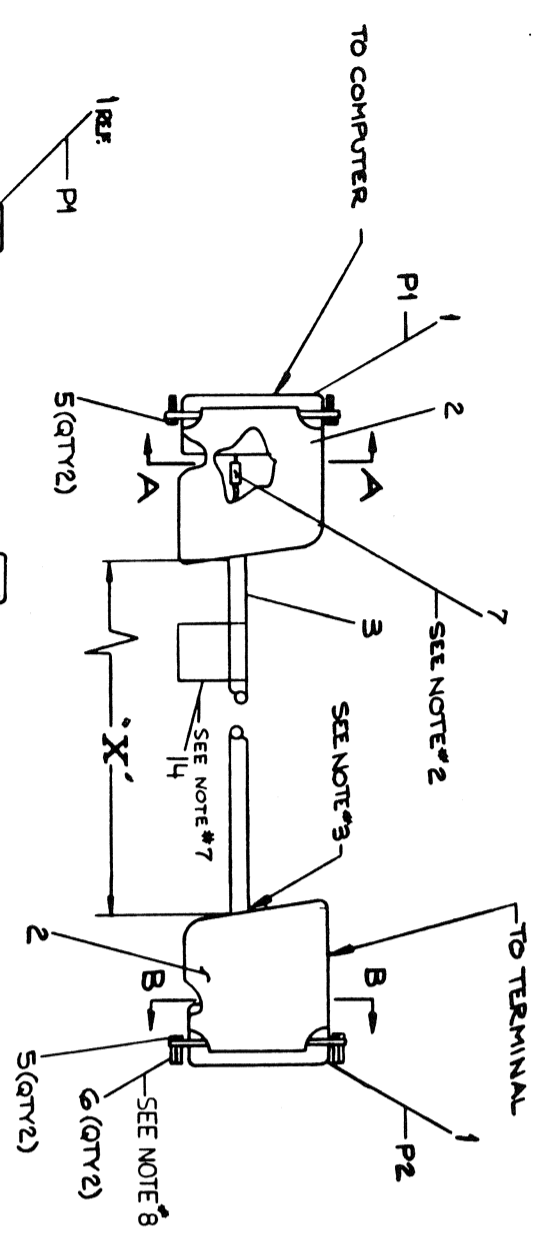
REVISIONS		
CHK	CHANGE NO.	REV.
	7016487-ML001	A
F. CERASUSKIS		
8 APR 83		

DESCRIPTION		QTY	UNIT	ITEM NO.
CAUTION: OFF SHEET PARTS LIST EXISTS SEE K-PL-7016487-0-DBP				
CIM CABLE ASSY				
DRAWN: [Signature]				
CHECKED: [Signature]				
ENGR: [Signature]				
MATERIAL: [Signature]				
SCALE: 1/4"				
SHEET 2 OF 2				

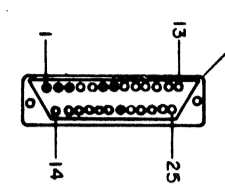


THIS DRAWING AND SPECIFICATIONS, INCLUDING ALL THE MATERIALS, SHALL BE THE PROPERTY OF BELL TELEPHONE COMPANY AND SHALL BE KEPT IN CONFIDENCE. IT IS TO BE USED ONLY FOR THE PURPOSES SPECIFIED HEREIN AND IS NOT TO BE REPRODUCED OR TRANSMITTED IN ANY FORM OR BY ANY MEANS, ELECTRONIC OR MECHANICAL, INCLUDING PHOTOCOPYING, RECORDING, OR BY ANY INFORMATION STORAGE AND RETRIEVAL SYSTEM, WITHOUT THE WRITTEN PERMISSION OF BELL TELEPHONE COMPANY.

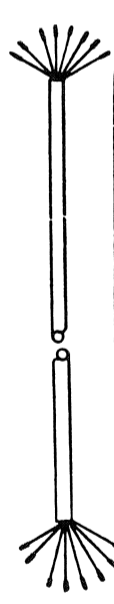
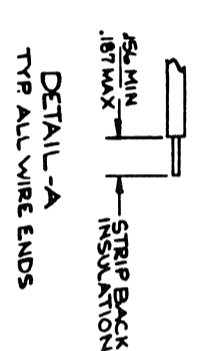
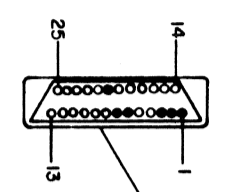
ITEM NO.	DESCRIPTION	FROM	TO	REMARKS
22	BLK	P1-7 NOTE #4	P2-7 NOTE #4	
3	RED	P1-2	P2-3	
3	SHIELD	P1-NOTE #2, #4	P2-1 NOTE #2	
3	BLK	P1-7 NOTE #4	P2-7 NOTE #4	
3	WHT	P1-3	P2-2	
3	SHIELD	P1-1 NOTE #2, #4	P2-1 NOTE #2	
3	BLK	P1-6	P2-20	
3	GRN	P1-20	P2-0	
3	22	SHIELD	SEE NOTE #3	



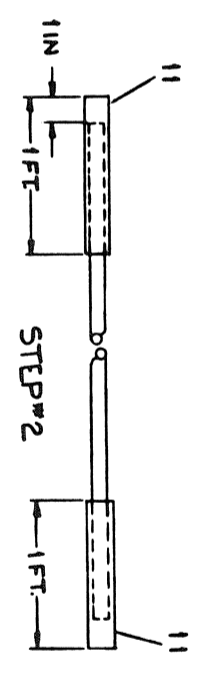
SECTION A-A  
SCALE: NONE  
(REAR VIEW)



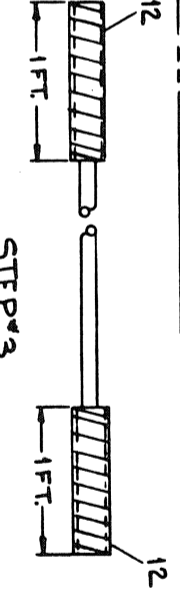
SECTION B-B  
SCALE: NONE  
(REAR VIEW)



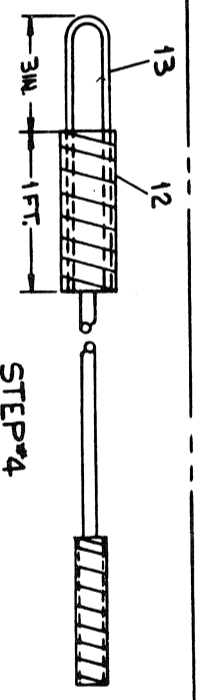
STEP #1  
INSTALL ITEM #4, 7 AND 8 TO ITEM #3 (CABLE) PER WIRE TABLE



COVER BOTH ENDS WITH ITEM #11 (TUBING, HEAT SHRINK) PER ABOVE DIMS



COVER BOTH ENDS WITH ITEM #12 (TAPE) PER ABOVE DIMS



INSTALL ITEM #13 TO ITEM #3 BY USING ITEM #12 (TAPE) PER ABOVE DIMS. THE WIRE LOOP AT END OF CABLE IS USED TO PULL CABLE THROUGH CONDUIT PIPE, AT INSTALLATION.

CAUTION: OFF SHEET PARTS LIST EXISTS. REFER TO K-PL-BC03M-0-0.

NUMBER	VARIATION	REMARKS
BC03M-01	1 FT.	
BC03M-25	25 FT.	
BC03M-A0	100 FT.	SEE NOTE 10
BC03M-B5	200 FT.	SEE NOTE 10
BC03M-E0	500 FT.	SEE NOTE 10
BC03M-L0	1000 FT.	SEE NOTE 10
BC03M-H5	750 FT.	SEE NOTE 10

VARIATIONS CONTINUED ON SECOND SHEET

- NOTES:
- VARIATIONS AND LENGTHS SHOWN IN LEGEND ARE STANDARD AND ARE SPECIFIED BY NUMERIC DESIGNATION IN FOOT INCREMENTS, THE TOLERANCE ON DIMENSION "X" WILL BE ±2% OF THE FOOT INCREMENT.
  - DRAIN WIRES TO BE ENCLOSED WITH ITEM #7 (TUBING) FROM END OF CABLE JACKET TO POINT WHERE THEY ENTER CONTACT.
  - CUT BACK DRAIN WIRE TO OUTER INSULATION ON BOTH ENDS.
  - THERE ARE TWO WIRES INSTALLED IN EACH #18-20 GA CONTACT (ITEM #4)
  - USE INSERTION/EXTRACTION TOOL (ITEM #9) TO CONSTRUCT CABLE. THIS PIECE IS DISCARDED AFTER USE.
  - THIS VARIATION IS NORMALLY A SPECIAL LOW VOLUME LENGTH.
  - LABEL PER DEC. STD. 022.
  - REMOVE ITEM #6 FOR CONNECTION TO UNITS WITHOUT CABLES I.E. VTDS, VT100, ETC
  - AT THE DISCRETION OF THE MANUFACTURING SITE ITEM #8 MAY BE SUBSTITUTED WITH P/N 1212583-00.
  - USE STEPS 1 THROUGH 4 FOR THIS VAR. THEN STOCK IN KIT FORM AS FOLLOWS: PUT ITEMS 1, 2, 5, 6, 9, AND ONE (1) COPY OF THIS PRINT INTO PLASTIC BAG (ITEM #10) FOLD OVER CABLE (ITEM #3) AND STAPLE TOGETHER.

QTY	DESCRIPTION	UNIT	QTY	DESCRIPTION	UNIT	QTY	DESCRIPTION	UNIT
13	WIRE #14 AWG (RFL 1114)		13	WIRE #14 AWG (RFL 1114)		13	WIRE #14 AWG (RFL 1114)	
12	TAPE (ROLL)		12	TAPE (ROLL)		12	TAPE (ROLL)	
11	TUBING (HEAT SHRINK)		11	TUBING (HEAT SHRINK)		11	TUBING (HEAT SHRINK)	
10	BAG, PLASTIC		10	BAG, PLASTIC		10	BAG, PLASTIC	
9	TOOL, INSERT/EXTRACT		9	TOOL, INSERT/EXTRACT		9	TOOL, INSERT/EXTRACT	
8	SOCKET #22		8	SOCKET #22		8	SOCKET #22	
7	TUBING #18 GA (NAT)		7	TUBING #18 GA (NAT)		7	TUBING #18 GA (NAT)	
6	SPACER #4-40 X .25 LG		6	SPACER #4-40 X .25 LG		6	SPACER #4-40 X .25 LG	
5	SCR. RETAINER (NAT)		5	SCR. RETAINER (NAT)		5	SCR. RETAINER (NAT)	
4	SOCKET #18-20		4	SOCKET #18-20		4	SOCKET #18-20	
3	CABLE		3	CABLE		3	CABLE	
2	HOOD		2	HOOD		2	HOOD	
1	PLUG		1	PLUG		1	PLUG	

REV.	DESCRIPTION	DATE
A	BC03M-00001	10-01-84
B	BC03M-00002	12-12-85
C	BC03M-00003	11-14-78
D	BC03M-MK0004	3-26-78
E	BC03M-MK0005	10-01-78
F	BC03M-MK0006	11-12-82

THIRD ANGLE PROJECTION

REMOVE DIMS AND PRINT DIMS DIMS

DO NOT SCALE DIMS

SEE PARTS LIST

CORD, EXTENSION  
NULL MODEM

SCALE 1/1

SHEET 1 OF 2

FINISH MK

THE DRAWING AND SPECIFICATIONS HEREON ARE THE PROPERTY OF DIGITAL EQUIPMENT CORPORATION AND SHALL NOT BE REPRODUCED OR COPIED IN WHOLE OR IN PART WITHOUT WRITTEN PERMISSION OF THE COMPANY. © 1976 DIGITAL EQUIPMENT CORPORATION

8  
F  
0-0-WM-0  
DIGITAL  
EQUIPMENT CORPORATION

LEGEND CONT.

NUMBER	DIM'TX	REMARKS
BC03M-15	15 FT	SEE NOTE 6
BC03M-35	35 FT	SEE NOTE 6
BC03M-50	50 FT	SEE NOTE 6
BC03M-75	75 FT	SEE NOTE 6
BC03M-A5	150 FT	SEE NOTE 6
BC03M-B0	200 FT	SEE NOTE 6

REVISION HISTORY	
DATE	ECO NUMBER

TITLE CORD, EXTENSION  
NULL MODEM

SIZE CODE	DOCUMENT NUMBER	REV.
DIA	BC03M-0-0	F
SCALE	NONE	SHEET 2 OF 2

DRG 137A

8

7

6

5

4

3

2

1

MK

2

3

4

5

6

7

8

D

C

B

A

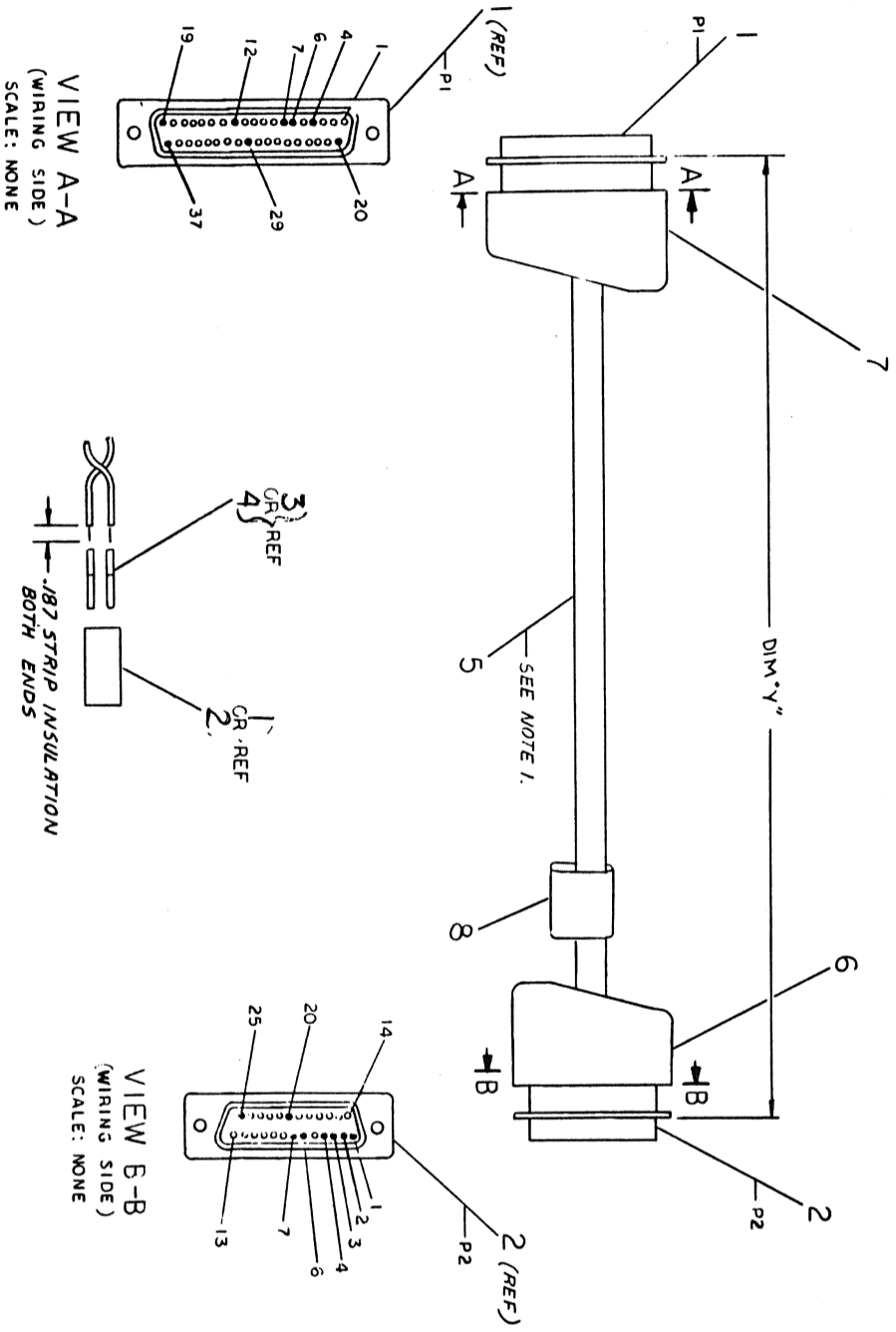
DIA BC03M-0-0  
REV F

THIS DRAWING AND SPECIFICATIONS, WHETHER IN THE ORIGINAL OR REPRODUCED FORM, ARE THE PROPERTY OF THE AIR FORCE AND ARE NOT TO BE REPRODUCED OR TRANSMITTED IN ANY FORM OR BY ANY MEANS, ELECTRONIC OR MECHANICAL, INCLUDING PHOTOCOPYING, RECORDING, OR BY ANY INFORMATION STORAGE AND RETRIEVAL SYSTEM, WITHOUT PERMISSION IN WRITING FROM THE AIR FORCE. (REF. AIR FORCE SPECIFICATION 1978 - "DEFENSE EQUIPMENT COMPARISON")

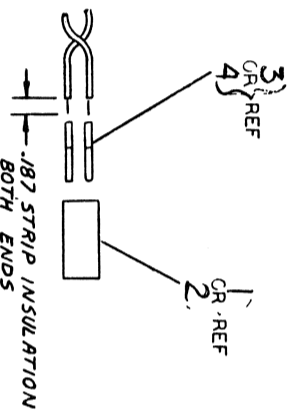
ITEM NO.	DESCRIPTION	FROM		TO		REMARKS	
		CONV	WTH	CONV	WTH		
5	22	BLK	P1-37	ITEM 3	P2-1	ITEM 4	
5	22	RED	P1-4	ITEM 3	P2-2	ITEM 4	
5	22	WHT	P1-6	ITEM 3	P2-3	ITEM 4	
5	22	GRN	P1-7	ITEM 3	P2-4	ITEM 4	
5	22	BRN	P1-29	ITEM 3	P2-6	ITEM 4	
5	22	GRY	P1-20	ITEM 3	P2-7	ITEM 4	
5	22	BLU	P1-12	ITEM 3	P2-20	ITEM 4	
5	22	ORN	P1-19	ITEM 3	P2-25	ITEM 4	

LEGEND		
PART NO.	VARIATION	REMARKS
BC448-01	12.00 IN ± 1 IN	

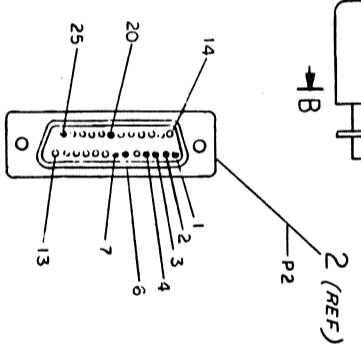
NOTES:  
1. THE YELLOW AND PURPLE CONDUCTORS ARE NOT USED, AND SHOULD BE CUT NEAR CABLE JACKET ON BOTH ENDS.



VIEW A-A  
(WIRING SIDE)  
SCALE: NONE



VIEW B-B  
(WIRING SIDE)  
SCALE: NONE



REVISIONS		
CHK	CHANGE NO.	REV.
BC448-TW001		A
S. HOYLE		

THIRD ANGLE PROJECTION	
OBJECT	VIEW
REMOVE BURRS AND BREAK BURR CORNER	DO NOT SCALE DIMS
MATERIAL	SEE PARTS LIST
FINISH	

QUANTITY & VARIATION	
QTY	VARIATION

UNLESS OTHERWISE SPECIFIED DIMENSIONS ARE IN INCHES	
FRAC	DEC
1/16	0.0625
1/8	0.125
3/16	0.1875
1/4	0.25
5/16	0.3125
3/8	0.375
7/16	0.4375
1/2	0.5
5/8	0.625
3/4	0.75
7/8	0.875
1	1.0

ITEM NO.	DESCRIPTION	DWG/PART NO.	ITEM NO.
1	LABEL, CABLE I.D.	3616073-00	8
1	HOOD, CABLE CLAMP	1214066-00	7
1	HOOD, HOUSING	1210493-50	5
8	WIRE CABLE #22 AWG (10 COND)	3107623-00	5
8	CONTACT SOCKET, CLAMP	1210493-41	4
1	CONTACT PIN, CLAMP	1210493-59	3
1	CONN. HOUSING	1210493-32	2
1	CONN. RING 37 PIN	1214065-00	1

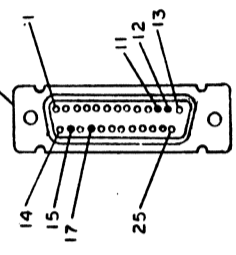
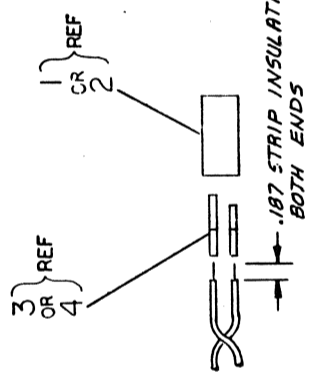
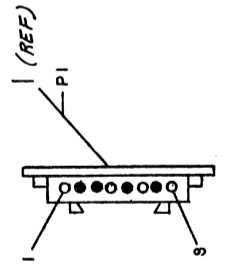
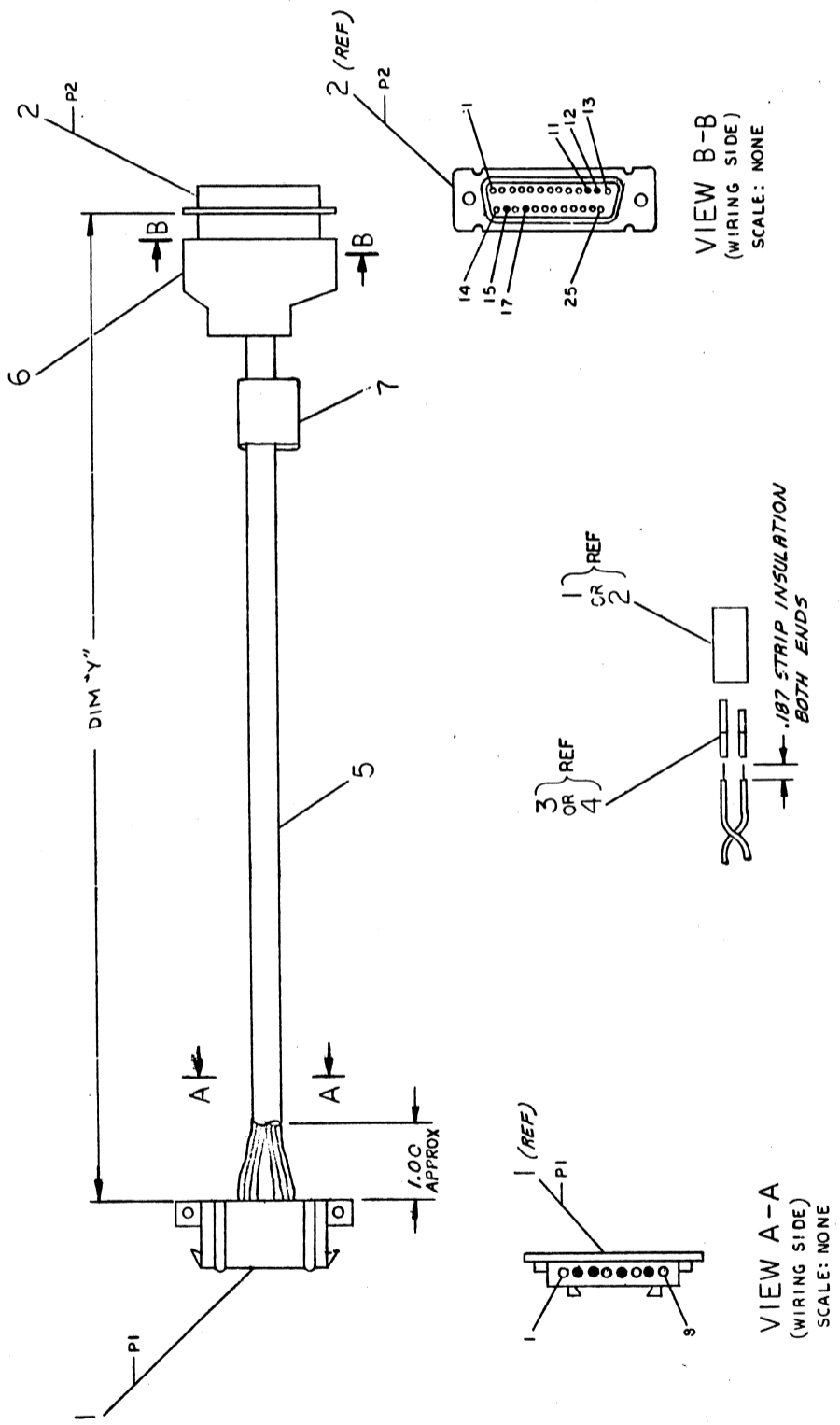
TITLE	
NO.	REV.
1	A

BC448-0-0

THIS DRAWING AND SPECIFICATIONS, HEREIN, ARE THE PROPERTY OF THE UNITED STATES GOVERNMENT AND WILL BE FURNISHED TO YOU BY THE UNITED STATES GOVERNMENT. IT IS TO BE USED FOR THE PURPOSES SPECIFIED IN THE CONTRACT DOCUMENTS AND IS NOT TO BE REPRODUCED OR TRANSMITTED IN ANY FORM OR BY ANY MEANS, ELECTRONIC OR MECHANICAL, INCLUDING PHOTOCOPYING, RECORDING, OR BY ANY INFORMATION STORAGE AND RETRIEVAL SYSTEM, WITHOUT PERMISSION IN WRITING FROM THE UNITED STATES GOVERNMENT.

ITEM NO.	DESCRIPTION	FROM		TO		REMARKS
		CONN.	WITH	CONN.	WITH	
5	22 BLK	PI-2	ITEM 3	P2-11	ITEM 4	
5	22 RED	PI-3	ITEM 3	P2-12	ITEM 4	
5	22 WHT	PI-5	ITEM 3	P2-15	ITEM 4	
5	22 GRN	PI-7	ITEM 3	P2-17	ITEM 4	

LEGEND		REMARKS
PART NO.	VARIATION DIM "Y"	
BC44C-01	12.00 IN ± 1 IN	



ITEM NO.	DESCRIPTION	QTY	UNIT	REVISION
1	1 LABEL, CABLE I.D.	36	16073-00	7
1	1 CONN JUNCTION SHELL	1210493-50		6
1	1 AIR CABLE #22 AWG (A COND)	9107706-00		5
4	4 CONTACT SOCKET CRIMP	1210493-41		4
4	4 MIN/ML PIN SOCKET 30-22 AWG	1209379-03		3
1	1 CONN RECEPT 25 SOCKET	1210493-32		2
1	1 MAT-H-LOCK 8 PIN HOUSING, SKT	1209340-00		1

UNLESS OTHERWISE SPECIFIED DIMENSIONS ARE IN INCHES	UNLESS OTHERWISE SPECIFIED DIMENSIONS ARE IN INCHES
ANGLE CLASS OF ACCURACY	ANGLE CLASS OF ACCURACY
SURFACE QUALITY	SURFACE QUALITY
MICROFINISH	MICROFINISH
FINISH	FINISH
QUANTITY & VARIATION	QUANTITY & VARIATION
THIRD ANGLE PROJECTION	THIRD ANGLE PROJECTION
DO NOT SCALE DWG	DO NOT SCALE DWG
MATERIAL SEE PARTS LIST	MATERIAL SEE PARTS LIST
SCALE 1/1	SCALE 1/1
SHEET 1 OF 1	SHEET 1 OF 1

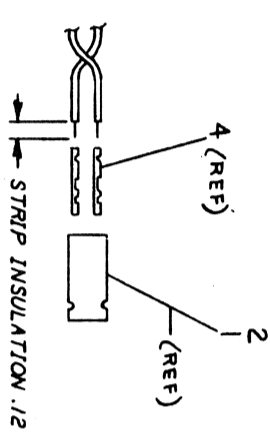
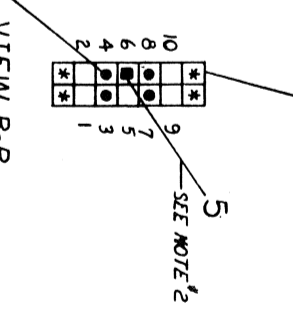
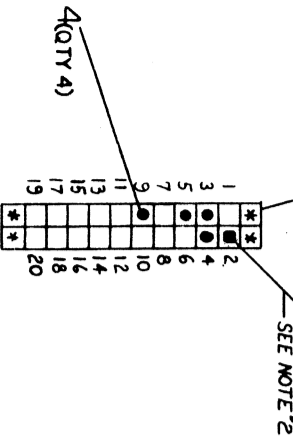
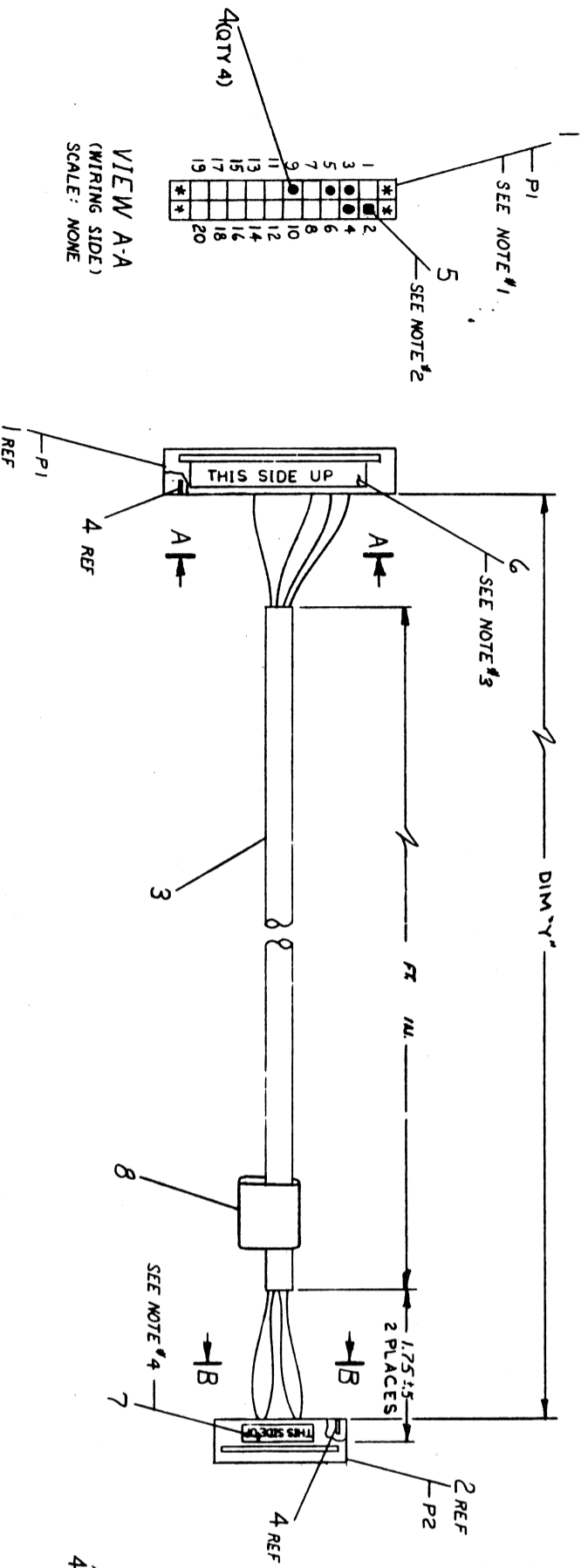
REV	CHG	BY	DATE
1	BC44C-TW01	S. HOYLE	4/17/80
2			

THIS DRAWING AND SPECIFICATION, HEREIN, ARE THE PROPERTY OF THE UNITED STATES GOVERNMENT AND ARE LOANED TO YOU BY THE AIR FORCE. IT IS TO BE RETURNED TO THE AIR FORCE AT THE END OF THE LOAN PERIOD. IT IS TO BE KEPT IN THE ORIGINAL FORM AND NOT REPRODUCED OR TRANSMITTED IN ANY FORM OR BY ANY MEANS, ELECTRONIC OR MECHANICAL, INCLUDING PHOTOCOPYING, RECORDING, OR BY ANY INFORMATION STORAGE AND RETRIEVAL SYSTEM, WITHOUT PERMISSION IN WRITING FROM THE AIR FORCE. (1978)

ITEM NO.	DESCRIPTION	FROM	TO	REMARKS
3	22 AWG BLK	P1-3	P2-7	
3	22 AWG RED	P1-4	P2-8	
3	22 AWG WHI	P1-5	P2-3	
3	22 AWG GRN	P1-9	P2-4	

PART NO.	VARIATION	REMARKS
BC44D-09	9FT. ± 2IN.	
BC44D-06	6FT. ± 2IN.	

- NOTES:
1. LOCATIONS MARKED (A) IN VIEWS A-A AND B-B ARE NOT TO BE USED.
  2. CONNS P1-2 AND P2-6 (ITEMS 1 AND 2) SHALL HAVE ONE KEY (ITEM 5) INSERTED AS SHOWN.
  3. PLACE LABEL (ITEM #6) ON P1 CONNECTOR (ITEM #1) AS SHOWN.
  4. PLACE LABEL (ITEM #7) ON P2 CONNECTOR (ITEM #2) AS SHOWN.



REV.	CHANGE NO.	REVISIONS
A	BC44D-TW00	W. AUPPERLEE
		A. BUSBYK 22-SEP-82
		W. AUPPERLEE
		W. AUPPERLEE 29-SEP-82

ITEM NO.	DESCRIPTION	QTY	UNIT	TERMINAL NO.	ITEM NO.
1	1 LABEL, CABLE I.D.	3616073-00			8
1	1 LABEL (THIS SIDE UP) .50X.25	3611567-02			7
1	1 LABEL (THIS SIDE UP) 1.0X.25	3611567-01			6
2	2 KEY, DUMMY, POLAR	9009140-00			5
8	8 SOCKET CRIMP CONTACT	1210089-07			4
NR	CABLE 22 AWG (4 COND)	9101706-00			3
1	1 TERM. HSG (14 POS)	1210918-30			2
1	1 TERM. HSG (24 POS)	1210918-25			1

THIRD ANGLE PROJECTION

DO NOT SCALE DIMS

REMOVE SPARE AND RE-USE SPARE CONTACTS

SEE PARTS LIST

NEXT HIGHER ARMY: E-NO 1016719-0-0

SIZE CODE: D

SCALE: 1/1

SHEET: 2

DATE: 1/1

REV: A

TITLE: CABLE ASSY FOR TUS8

PART NO: BC44D-0-0

