

ALL DIMENSIONS ARE IN INCHES UNLESS OTHERWISE SPECIFIED
DATE: 10/15/76
DRAWN BY: [Signature]
CHECKED BY: [Signature]
APPROVED BY: [Signature]

COMPONENT SIDE VIEW

NOTES:
1. DIODES D1 THRU D4 MUST BE RAISED
FROM THE P.C. BOARD .031 TO .188

E 5412411-0-0 2 1

3

4

5

6

7

8

SEE NOTE #1

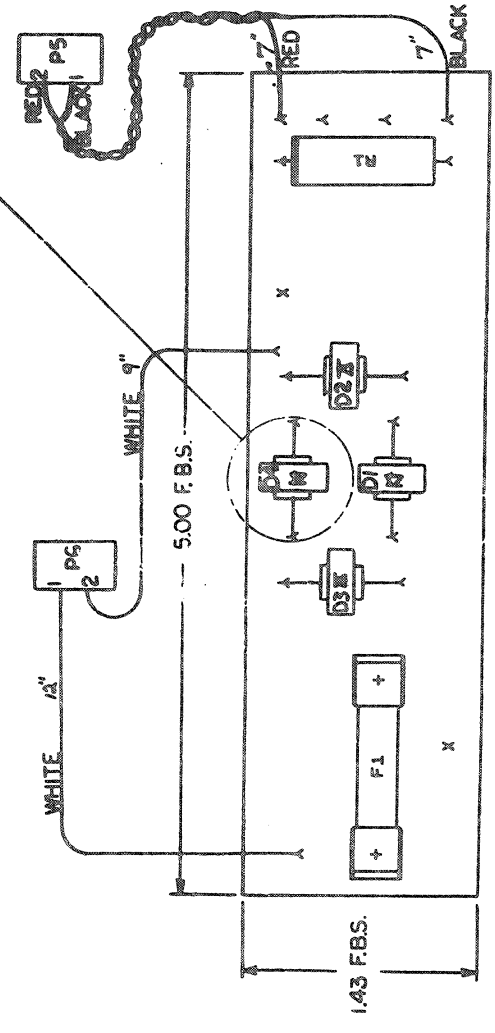
PC BOARD

.031 TO .188

DETAIL "A"

SCALE: NONE

SEE DETAIL "A"



NOTES:

CHG	NO	REV	DATE	BY	CHK
5412411-1	C		10/15/76	G. POTTER	
5412411-2	D		10/15/76	G. POTTER	
5412411-3	E		10/15/76	G. POTTER	
5412411-0-0			10/15/76	G. POTTER	

ETCH: REV. C	PC BOARD DATA BRSE REV. C
--------------	---------------------------

SIGNATURES	DATE	SIZE	REVISION
DRN. [Signature]	10-15-76	1/2" X 1/2"	1
CHK'D. [Signature]	10-15-76	1/2" X 1/2"	2
ENG. [Signature]	10-15-76	1/2" X 1/2"	3
PROD. ENG. [Signature]	10-15-76	1/2" X 1/2"	4
SCALE: 2/1			
SHT. 1 OF 3			
NEXT NUMBER ISSY.			

digital

TITLE INPUT

RECTIFIER BOARD

5412411-0-0

THIS DRAWING IS THE PROPERTY OF THE UNITED STATES GOVERNMENT AND IS NOT TO BE REPRODUCED OR TRANSMITTED IN ANY FORM OR BY ANY MEANS, ELECTRONIC OR MECHANICAL, INCLUDING PHOTOCOPYING, RECORDING, OR BY ANY INFORMATION STORAGE AND RETRIEVAL SYSTEM, WITHOUT PERMISSION IN WRITING FROM THE UNITED STATES GOVERNMENT.

8

7

6

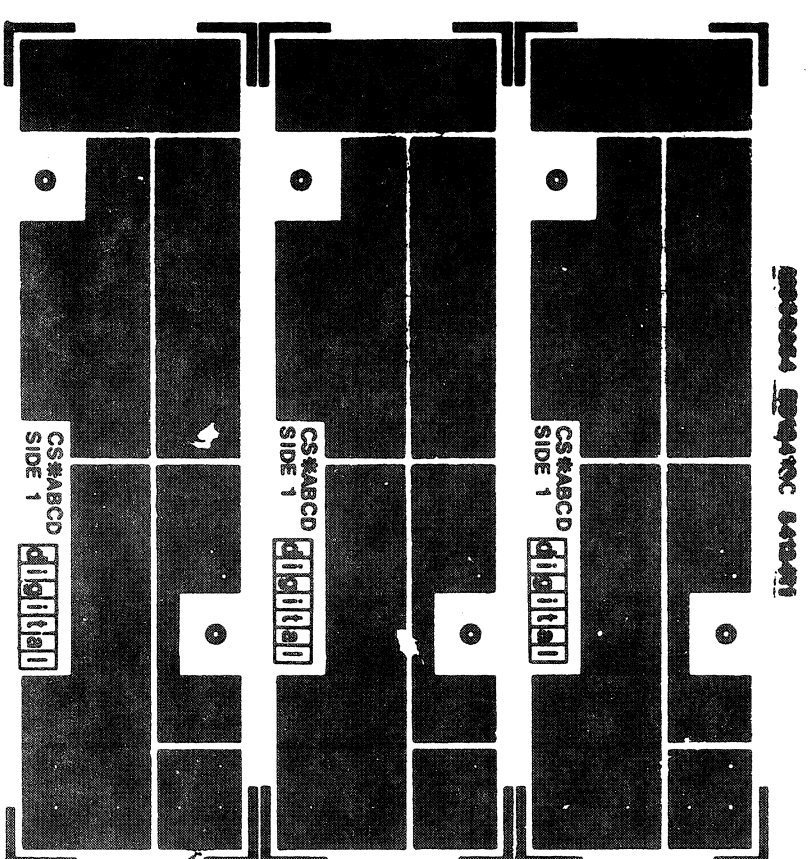
5

4

3

2

1



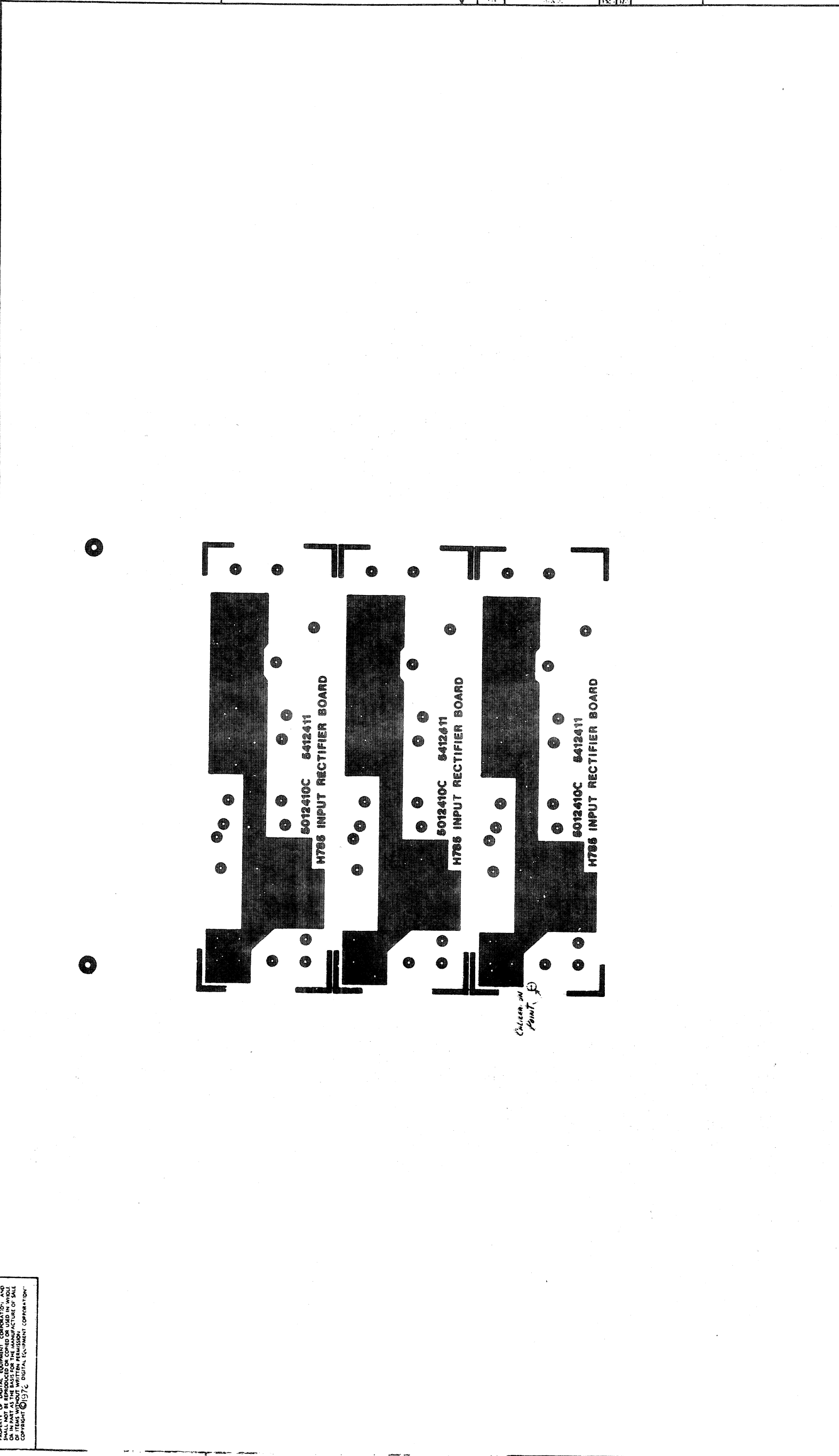
REVISIONS	
CHG. NO.	REV.

TITLE		SCALE		SHEET		DWT.		NUMBER		REV.	
INPUT RECTIFIER BOARD		2"		2 OF 3				5412411-0-0		E	

qub

THIS DRAWING AND SPECIFICATIONS HEREIN ARE THE PROPERTY OF DIGITAL EQUIPMENT CORPORATION, AND SHALL NOT BE REPRODUCED, COPIED, OR TRANSMITTED IN ANY FORM OR BY ANY MEANS, ELECTRONIC OR MECHANICAL, INCLUDING PHOTOCOPYING, RECORDING, OR BY ANY INFORMATION STORAGE AND RETRIEVAL SYSTEM, WITHOUT THE WRITTEN PERMISSION OF DIGITAL EQUIPMENT CORPORATION. COPYRIGHT © 1976 DIGITAL EQUIPMENT CORPORATION.

8 7 6 5 4 3 2 1



Chassis on
Panel F

REVISIONS		TITLE		SIZE CODE		NUMBER		REV.	
CHK	CHANGE NO.	INPUT RECTIFIER BOARD		D IJA		5412411-0-0		E	
		SCALE 2/1		SHEET 3 OF 3					

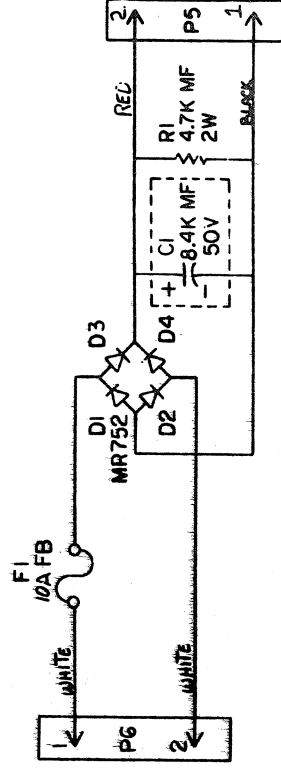
D C B A

5412411-0-0

"THIS DRAWING AND SPECIFICATIONS, HEREIN, ARE THE PROPERTY OF DIGITAL EQUIPMENT CORPORATION AND SHALL NOT BE REPRODUCED OR COPIED OR USED IN WHOLE OR IN PART AS THE BASIS FOR THE MANUFACTURE OR SALE OF ITEMS WITHOUT WRITTEN PERMISSION.
COPYRIGHT © 1976 DIGITAL EQUIPMENT CORPORATION"

NOTES

1. C! WILL BE CONNECTED TO BOARD AT NEXT HIGHER ASSEMBLY.

[illegible]

GND AND 5V ARE USUALLY PIN 7 AND 14
RESPECTIVELY EXCEPTIONS ARE STATED ABOVE

KC PIN LOCATIONS

DEC FORM NO.
OAS 136-B

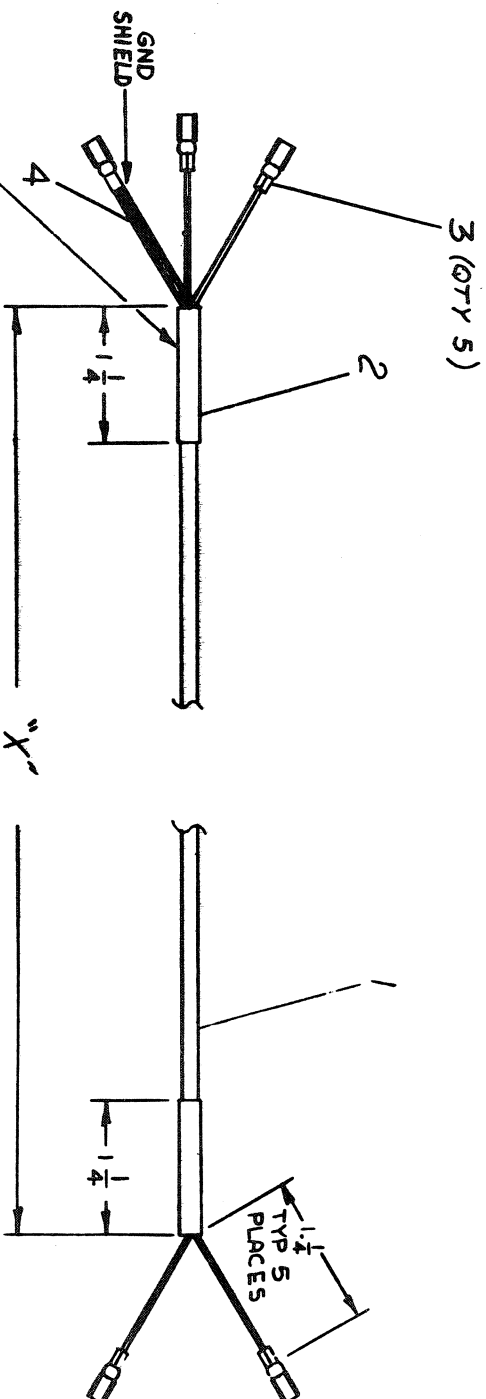
۵۱۶۹

JAEFUCURI		REV. 10		CHANGE NO. 00003		REV. C	
REVISIONS							
DEC. NO.		EIA NO.		DEC. NO.		EIA NO.	
SCALE		SHEET		OF		OF	
2		2		2		2	
SEMICONDUCTOR CONVERSION CHART							
QTY		REF. DESIGNATION		DESCRIPTION		PART NO.	
1		C		C		C	
ETCH BOARD REV.							
DATE		DATE		DATE		DATE	
7-15-72		7-15-72		7-15-72		7-15-72	
CROSS		CROSS		CROSS		CROSS	
7-15-72		7-15-72		7-15-72		7-15-72	
ETCH BOARD REV.		ETCH BOARD REV.		ETCH BOARD REV.		ETCH BOARD REV.	
7-15-72		7-15-72		7-15-72		7-15-72	
CROSS		CROSS		CROSS		CROSS	
7-15-72		7-15-72		7-15-72		7-15-72	
ETCH BOARD REV.		ETCH BOARD REV.		ETCH BOARD REV.		ETCH BOARD REV.	
7-15-72		7-15-72		7-15-72		7-15-72	
CROSS		CROSS		CROSS		CROSS	
7-15-72		7-15-72		7-15-72		7-15-72	
ETCH BOARD REV.		ETCH BOARD REV.		ETCH BOARD REV.		ETCH BOARD REV.	
7-15-72		7-15-72		7-15-72		7-15-72	
CROSS		CROSS		CROSS		CROSS	
7-15-72		7-15-72		7-15-72		7-15-72	
ETCH BOARD REV.		ETCH BOARD REV.		ETCH BOARD REV.		ETCH BOARD REV.	
7-15-72		7-15-72		7-15-72		7-15-72	
CROSS		CROSS		CROSS		CROSS	
7-15-72		7-15-72		7-15-72		7-15-72	
ETCH BOARD REV.		ETCH BOARD REV.		ETCH BOARD REV.		ETCH BOARD REV.	
7-15-72		7-15-72		7-15-72		7-15-72	
CROSS		CROSS		CROSS		CROSS	
7-15-72		7-15-72		7-15-72		7-15-72	
ETCH BOARD REV.		ETCH BOARD REV.		ETCH BOARD REV.		ETCH BOARD REV.	
7-15-72		7-15-72		7-15-72		7-15-72	
CROSS		CROSS		CROSS		CROSS	
7-15-72		7-15-72		7-15-72		7-15-72	
ETCH BOARD REV.		ETCH BOARD REV.		ETCH BOARD REV.		ETCH BOARD REV.	
7-15-72		7-15-72		7-15-72		7-15-72	
CROSS		CROSS		CROSS		CROSS	
7-15-72		7-15-72		7-15-72		7-15-72	
ETCH BOARD REV.		ETCH BOARD REV.		ETCH BOARD REV.		ETCH BOARD REV.	
7-15-72		7-15-72		7-15-72		7-15-72	
CROSS		CROSS		CROSS		CROSS	
7-15-72		7-15-72		7-15-72		7-15-72	
ETCH BOARD REV.		ETCH BOARD REV.		ETCH BOARD REV.		ETCH BOARD REV.	
7-15-72		7-15-72		7-15-72		7-15-72	
CROSS		CROSS		CROSS		CROSS	
7-15-72		7-15-72		7-15-72		7-15-72	
ETCH BOARD REV.		ETCH BOARD REV.		ETCH BOARD REV.		ETCH BOARD REV.	
7-15-72		7-15-72		7-15-72		7-15-72	
CROSS		CROSS		CROSS		CROSS	
7-15-72		7-15-72		7-15-72		7-15-72	
ETCH BOARD REV.		ETCH BOARD REV.		ETCH BOARD REV.		ETCH BOARD REV.	
7-15-72		7-15-72		7-15-72		7-15-72	
CROSS		CROSS		CROSS		CROSS	
7-15-72		7-15-72		7-15-72		7-15-72	
ETCH BOARD REV.		ETCH BOARD REV.		ETCH BOARD REV.		ETCH BOARD REV.	
7-15-72		7-15-72		7-15-72		7-15-72	
CROSS		CROSS		CROSS		CROSS	
7-15-72		7-15-72		7-15-72		7-15-72	
ETCH BOARD REV.		ETCH BOARD REV.		ETCH BOARD REV.		ETCH BOARD REV.	
7-15-72		7-15-72		7-15-72		7-15-72	
CROSS		CROSS		CROSS		CROSS	
7-15-72		7-15-72		7-15-72		7-15-72	
ETCH BOARD REV.		ETCH BOARD REV.		ETCH BOARD REV.		ETCH BOARD REV.	
7-15-72		7-15-72		7-15-72		7-15-72	
CROSS		CROSS		CROSS		CROSS	
7-15-72		7-15-72					

"THIS DRAWING AND SPECIFICATIONS, HEREIN, ARE THE PROPERTY OF DIGITAL EQUIPMENT CORPORATION, AND SHALL NOT BE REPRODUCED OR COPIED OR USED IN ANY MANNER WITHOUT WRITTEN PERMISSION. COPYRIGHT © 1975 DIGITAL EQUIPMENT CORPORATION"

LEGEND		
NUMBER	DIM"x"	USED ON
7011413-3F	3 FT 6 IN ± 1 IN	BAII-L OR K
7011413-7	7 FT ± 2 IN	H92886
7011413-10	10 FT 0 IN ± 1 IN	1104/34-TA

- NOTES:
- AFTER STRIPING OUTSIDE COVERING (1-1/4 IN) FOLD BACK THE GROUND WIRE. (BARE ONE) AND REMOVE THE WRAPPER.
 - COVER THE FOLDED BACK BARE WIRE WITH ITEM #2 AND SHRINK (ON BOTH ENDS).
 - ADD ITEM #4 (CLEAR TUBING) OVER ITEM #1 (SHIELD) ON ONE END.
 - STAKE ITEM #3 (5 PLACES) ONTO ITEM #1

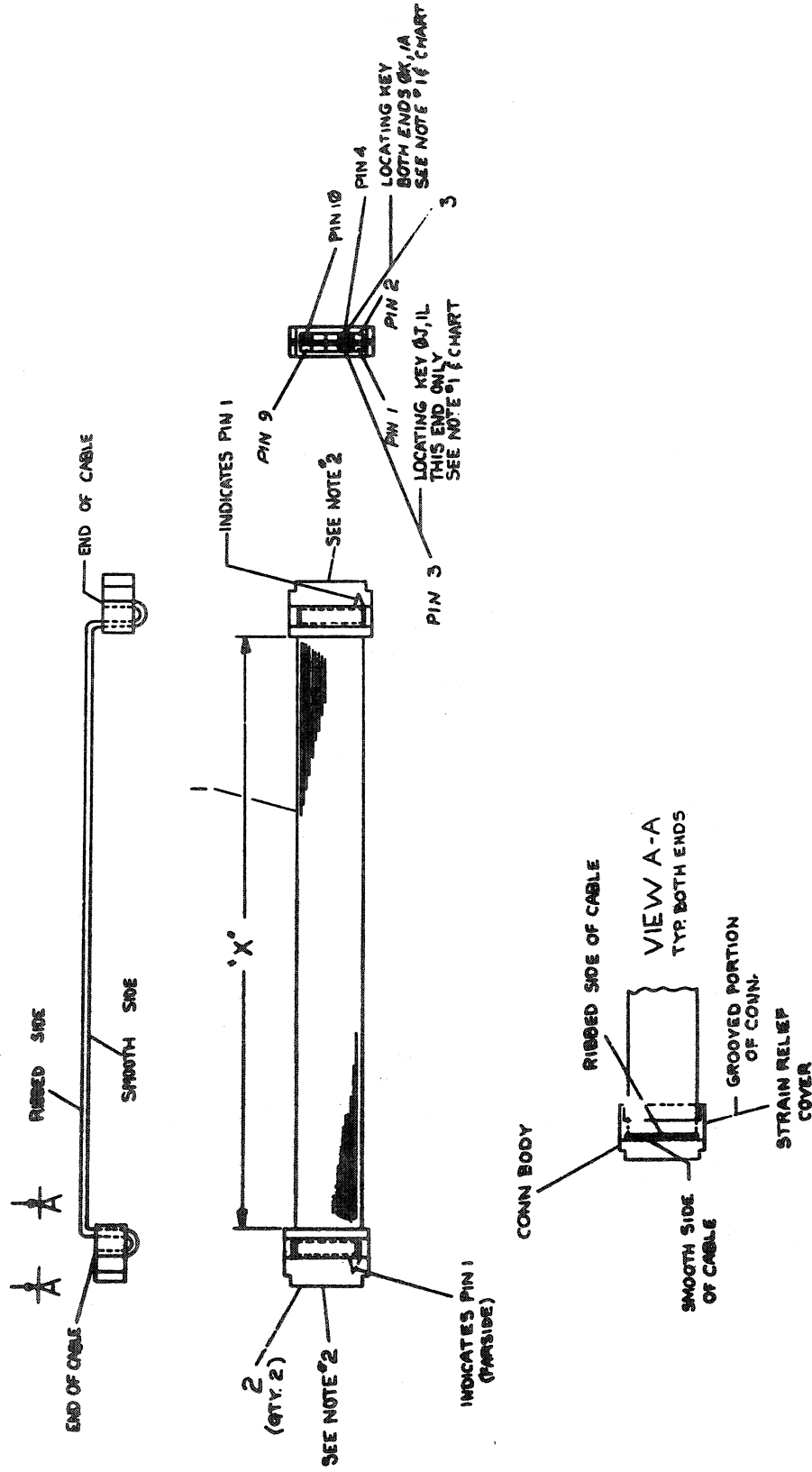


REVISIONS		
CHK	CHANGE NO.	REV.
2/1	7011413-00001	A
R. BARRY		
2/1	7011413-00002	B
R. BARRY		
2/1	7011413-00003	C
R. BARRY		
2/1	7011413-00004	D
R. BARRY		
2/1	7011413-00005	E
R. BARRY		
2/1	7011413-00006	F
R. BARRY		
2/1	7011413-00007	G
R. BARRY		
2/1	7011413-00008	H
R. BARRY		
2/1	7011413-00009	I
R. BARRY		
2/1	7011413-00010	J
R. BARRY		
2/1	7011413-00011	K
R. BARRY		
2/1	7011413-00012	L
R. BARRY		
2/1	7011413-00013	M
R. BARRY		
2/1	7011413-00014	N
R. BARRY		
2/1	7011413-00015	O
R. BARRY		
2/1	7011413-00016	P
R. BARRY		
2/1	7011413-00017	Q
R. BARRY		
2/1	7011413-00018	R
R. BARRY		
2/1	7011413-00019	S
R. BARRY		
2/1	7011413-00020	T
R. BARRY		
2/1	7011413-00021	U
R. BARRY		
2/1	7011413-00022	V
R. BARRY		
2/1	7011413-00023	W
R. BARRY		
2/1	7011413-00024	X
R. BARRY		
2/1	7011413-00025	Y
R. BARRY		
2/1	7011413-00026	Z
R. BARRY		
2/1	7011413-00027	AA
R. BARRY		
2/1	7011413-00028	AB
R. BARRY		
2/1	7011413-00029	AC
R. BARRY		
2/1	7011413-00030	AD
R. BARRY		
2/1	7011413-00031	AE
R. BARRY		
2/1	7011413-00032	AF
R. BARRY		
2/1	7011413-00033	AG
R. BARRY		
2/1	7011413-00034	AH
R. BARRY		
2/1	7011413-00035	AI
R. BARRY		
2/1	7011413-00036	AJ
R. BARRY		
2/1	7011413-00037	AK
R. BARRY		
2/1	7011413-00038	AL
R. BARRY		
2/1	7011413-00039	AM
R. BARRY		
2/1	7011413-00040	AN
R. BARRY		
2/1	7011413-00041	AO
R. BARRY		
2/1	7011413-00042	AP
R. BARRY		
2/1	7011413-00043	AQ
R. BARRY		
2/1	7011413-00044	AR
R. BARRY		
2/1	7011413-00045	AS
R. BARRY		
2/1	7011413-00046	AT
R. BARRY		
2/1	7011413-00047	AU
R. BARRY		
2/1	7011413-00048	AV
R. BARRY		
2/1	7011413-00049	AW
R. BARRY		
2/1	7011413-00050	AX
R. BARRY		
2/1	7011413-00051	AY
R. BARRY		
2/1	7011413-00052	AZ
R. BARRY		
2/1	7011413-00053	BA
R. BARRY		
2/1	7011413-00054	BB
R. BARRY		
2/1	7011413-00055	BC
R. BARRY		
2/1	7011413-00056	BD
R. BARRY		
2/1	7011413-00057	BE
R. BARRY		
2/1	7011413-00058	BF
R. BARRY		
2/1	7011413-00059	BG
R. BARRY		
2/1	7011413-00060	BH
R. BARRY		
2/1	7011413-00061	BI
R. BARRY		
2/1	7011413-00062	BJ
R. BARRY		
2/1	7011413-00063	BK
R. BARRY		
2/1	7011413-00064	BL
R. BARRY		
2/1	7011413-00065	BM
R. BARRY		
2/1	7011413-00066	BN
R. BARRY		
2/1	7011413-00067	BO
R. BARRY		
2/1	7011413-00068	BP
R. BARRY		
2/1	7011413-00069	BQ
R. BARRY		
2/1	7011413-00070	BR
R. BARRY		
2/1	7011413-00071	BS
R. BARRY		
2/1	7011413-00072	BT
R. BARRY		
2/1	7011413-00073	BU
R. BARRY		
2/1	7011413-00074	BV
R. BARRY		
2/1	7011413-00075	BW
R. BARRY		
2/1	7011413-00076	BX
R. BARRY		
2/1	7011413-00077	BY
R. BARRY		
2/1	7011413-00078	BZ
R. BARRY		
2/1	7011413-00079	CA
R. BARRY		
2/1	7011413-00080	CB
R. BARRY		
2/1	7011413-00081	CC
R. BARRY		
2/1	7011413-00082	CD
R. BARRY		
2/1	7011413-00083	CE
R. BARRY		
2/1	7011413-00084	CF
R. BARRY		
2/1	7011413-00085	CG
R. BARRY		
2/1	7011413-00086	CH
R. BARRY		
2/1	7011413-00087	CI
R. BARRY		
2/1	7011413-00088	CJ
R. BARRY		
2/1	7011413-00089	CK
R. BARRY		
2/1	7011413-00090	CL
R. BARRY		
2/1	7011413-00091	CM
R. BARRY		
2/1	7011413-00092	CN
R. BARRY		
2/1	7011413-00093	CO
R. BARRY		
2/1	7011413-00094	CP
R. BARRY		
2/1	7011413-00095	CQ
R. BARRY		
2/1	7011413-00096	CR
R. BARRY		
2/1	7011413-00097	CS
R. BARRY		
2/1	7011413-00098	CT
R. BARRY		
2/1	7011413-00099	CU
R. BARRY		
2/1	7011413-00100	CV
R. BARRY		
2/1	7011413-00101	CW
R. BARRY		
2/1	7011413-00102	CX
R. BARRY		
2/1	7011413-00103	CY
R. BARRY		
2/1	7011413-00104	CZ
R. BARRY		
2/1	7011413-00105	DA
R. BARRY		
2/1	7011413-00106	DB
R. BARRY		
2/1	7011413-00107	DC
R. BARRY		
2/1	7011413-00108	DD
R. BARRY		
2/1	7011413-00109	DE
R. BARRY		
2/1	7011413-00110	DF
R. BARRY		
2/1	7011413-00111	DG
R. BARRY		
2/1	7011413-00112	DH
R. BARRY		
2/1	7011413-00113	DI
R. BARRY		
2/1	7011413-00114	DJ
R. BARRY		
2/1	7011413-00115	DK
R. BARRY		
2/1	7011413-00116	DL
R. BARRY		
2/1	7011413-00117	DM
R. BARRY		
2/1	7011413-00118	DN
R. BARRY		
2/1	7011413-00119	DO
R. BARRY		
2/1	7011413-00120	DP
R. BARRY		
2/1	7011413-00121	DQ
R. BARRY		
2/1	7011413-00122	DR
R. BARRY		
2/1	7011413-00123	DS
R. BARRY		
2/1	7011413-00124	DT
R. BARRY		
2/1	7011413-00125	DU
R. BARRY		
2/1	7011413-00126	DV
R. BARRY		
2/1	7011413-00127	DW
R. BARRY		
2/1	7011413-00128	DX
R. BARRY		
2/1	7011413-00129	DY
R. BARRY		
2/1	7011413-00130	DZ
R. BARRY		
2/1	7011413-00131	EA
R. BARRY		
2/1	7011413-00132	EB
R. BARRY		
2/1	7011413-00133	EC
R. BARRY		
2/1	7011413-00134	ED
R. BARRY		
2/1	7011413-00135	EE
R. BARRY		
2/1	7011413-00136	EF
R. BARRY		
2/1	7011413-00137	EG
R. BARRY		
2/1	7011413-00138	EH
R. BARRY		
2/1	7011413-00139	EI
R. BARRY		
2/1	7011413-00140	EJ
R. BARRY		
2/1	7011413-00141	EK
R. BARRY		
2/1	7011413-00142	EL
R. BARRY		
2/1	7011413-00143	EM
R. BARRY		
2/1	7011413-00144	EN
R. BARRY		
2/1	7011413-00145	EO
R. BARRY		
2/1	7011413-00146	EP
R. BARRY		
2/1	7011413-00147	EQ
R. BARRY		
2/1	7011413-00148	ER
R. BARRY		
2/1	7011413-00149	ES
R. BARRY		
2/1	7011413-00150	ET
R. BARRY		
2/1	7011413-00151	EU
R. BARRY		
2/1	7011413-00152	EV
R. BARRY		
2/1	7011413-00153	EW
R. BARRY		
2/1	7011413-00154	EX
R. BARRY		
2/1	7011413-00155	EY
R. BARRY		
2/1	7011413-00156	EZ
R. BARRY		
2/1	7011413-00157	FA
R. BARRY		
2/1	7011413-00158	FB
R. BARRY		
2/1	7011413-00159	FC
R. BARRY		
2/1	7011413-00160	FD
R. BARRY		
2/1	7011413-00161	FE
R. BARRY		
2/1	7011413-00162	FF
R. BARRY		
2/1	7011413-00163	FG
R. BARRY		
2/1	7011413-00164	FH
R. BARRY		
2/1	7011413-00165	FI
R. BARRY		
2/1	7011413-00166	FJ
R. BARRY		
2/1	7011413-00167	FK
R. BARRY		
2/1	7011413-00168	FL
R. BARRY		
2/1	7011413-00169	FM
R. BARRY		
2/1	7011413-00170	FN
R. BARRY		
2/1	7011413-00171	FO
R. BARRY		
2/1	7011413-00172	FP
R. BARRY		
2/1	7011413-00173	FQ
R. BARRY		
2/1	7011413-00174	FR
R. BARRY		
2/1	7011413-00175	FS
R. BARRY		
2/1	7011413-00176	FT
R. BARRY		
2/1	7011413-00177	FU
R. BARRY		
2/1	7011413-00178	FV
R. BARRY		
2/1	7011413-00179	FW
R. BARRY		
2/1	7011413-00180	FX
R. BARRY		
2/1	7011413-00181	FY
R. BARRY		
2/1	7011413-00182	FZ
R. BARRY		
2/1	7011413-00183	GA
R. BARRY		
2/1	7011413-00184	GB
R. BARRY		
2/1	7011413-00185	GC
R. BARRY		
2/1	7011413-00186	GD
R. BARRY		
2/1	7011413-00187	GE
R. BARRY		
2/1	7011413-00188	GF
R. BARRY		
2/1	7011413-00189	GG
R. BARRY		
2/1	7011413-00190	GH
R. BARRY		
2/1	7011413-00191	GI
R. BARRY		
2/1	7011413-00192	GJ
R. BARRY		
2/1	7011413-00193	GK
R. BARRY		
2/1	7011413-00194	GL
R. BARRY		
2/1	7011413-00195	GM
R. BARRY		
2/1	7011413-00196	GN
R. BARRY		
2/1	7011413-00197	GO
R. BARRY		
2/1	7011413-00198	GP
R. BARRY		
2/1	7011413-00199	GQ
R. BARRY		
2/1	7011413-00200	GR
R. BARRY		
2/1	7011413-00201	GS
R. BARRY		
2/1	7011413-00202	GT
R. BARRY		
2/1	7011413-00203	GU
R. BARRY		
2/1	7011413-00204	GV
R. BARRY		
2/1	7011413-00205	GW
R. BARRY		
2/1	7011413-00206	GX
R. BARRY		
2/1	7011413-00207	GY
R. BARRY		
2/1	7011413-00208	GZ
R. BARRY		
2/1	7011413-00209	HA
R. BARRY		
2/1	7011413-00210	HB
R. BARRY		
2/1	7011413-00211	HC
R. BARRY		
2/1	7011413-00212	HD
R. BARRY		
2/1	7011413-00213	HE
R. BARRY		
2/1	7011413-00214	HF
R. BARRY		
2/1	7011413-00215	HG
R. BARRY		
2/1	7011413-00216	HH
R. BARRY		
2/1	7011413-00217	HI
R. BARRY		
2/1	7011413-00218	HJ
R. BARRY		
2/1	7011413-00219	HK
R. BARRY		
2/1	7011413-00220	HL
R. BARRY		
2/1	7011413-00221	HM
R. BARRY		
2/1	7011413-00222	HN
R. BARRY		
2/1	7011413-00223	HO
R. BARRY		
2/1	7011413-00224	HP
R. BARRY		
2/1	7011413-00225	HQ
R. BARRY		
2/1	7011413-00226	HR
R. BARRY		
2/1	7011413-00227	HS
R. BARRY		
2/1	7011413-00228	HT
R. BARRY		
2/1	7011413-00229	HU
R. BARRY		
2/1	7011413-00230	HV
R. BARRY		
2/1	7011413-00231	HW
R. BARRY		
2/1	7011413-00232	HX
R. BARRY		
2/1	7011413-00233	HY
R. BARRY		
2/1	7011413-00234	HZ
R. BARRY		
2/1	7011413-00235	IA
R. BARRY		
2/1	7011413-00236	IB
R. BARRY		
2/1	7011413-00237	IC
R. BARRY		
2/1	7011413-00238	ID

NOTES:

1. INSERT KEY IN PROPER CONNECTOR PIN AND BREAK OFF TAB.
2. FOR ITEM (2) DRAWING IS SHOWING 3M CONNECTOR.

LEGEND			
NUMBER	PIVOT VARIATION	USED ON	KEY PIN
701411-0J	8 IN ± 5 IN.	BA11-L OR K	10 ONE END
701411-0K	9 IN ± 5 IN.	L51-11	10 BOTH ENDS
701411-1D	1 FT. 4 IN ± 1 IN.	KY11-LB	10 ONE END
701411-1D	1 FT. 4 IN ± 1 IN.	BA11-FL00 APP	10 ONE END
701411-1E	7 IN ± 5 IN.	H700, 1, 2, 3	
701411-1J	1 FT. 8 IN ± 3 IN.	1104/347A	PIN 3 1 END
701411-1L	1 FT. 10 IN ± 3 IN.	BA11-L, H777	10 BOTH ENDS
701411-1M	1 FT. 4 IN ± 2 IN.	H707	10 ONE END
701411-3J	3 FT. 8 IN ± 3 IN.	BA11-K700	
701411-2J	2 FT. 8 IN ± 1 IN.	BA11-K705	NO KEY
701411-3F	5 FT. 4 IN ± 2 IN.	H750	10 ONE END
701411-15	12 FT. ± 2 IN.	H757	
701411-7	7 FT. ± 2 IN.	11700	

[illegible]

DIGITAL EQUIPMENT CORPORATION
MAYNARD, MASSACHUSETTS
PARTS LIST

MADE BY	D. HEALY	CHECKED	D. HEALY	SECTION
DATE	15 DEC 76	DATE	16 DEC 76	1
ENG	<i>DRH</i>	PROD	<i>DRH</i>	ISSUED SECT.
DATE	17 JAN 77	DATE	1/19/77	1

ITEM NO.	DWG NO. / PART NO.	DESCRIPTION
	MP00190	1134A FIELD MAINTENANCE PRINT SET
	EK-1134A-OP	1134A SYSTEM USERS MANUAL
	EK-KD11-EA-TM	KD11-EA PROCESSOR MANUAL *
	EK-MS11E-MM	MS11-E-J MOS MEMORY MAINTENANCE MANUAL *
	EK-MM11D-TM	MM11D/DP CORE MEMORY MANUAL *
	EK-MS11K-MM	MS11-K MOS MEMORY MAINTENANCE MANUAL *
	EK-BAL1K-MM	BAL1-K MAINTENANCE MANUAL *
	EK-BAL1L-MM	BAL1-L MAINTENANCE MANUAL *
	EK-M9301-TM	M9301 MAINTENANCE MANUAL * NOTE 1
	EK-M7850-MM	M7850 MAINTENANCE MANUAL *
	EK-DL11W-MM	DL11-W MAINTENANCE MANUAL *
	EK-KY11-LB-MM	KY11-LB MAINTENANCE MANUAL *
	ZJ010-RB	SOFTWARE LIBRARY KIT (PAPER TAPE)
	1211825	CHASSIS TRACKS AND MOUNTING HARDWARE
	7010059	SHIPPING BRACKET
	EK-MM11YP-TM	MM11YP MAINTENANCE MANUAL
	EK-M9312-MM	M9312 MAINT. MANUAL * NOTE 1
	23248F1	ROM, CONSOLE EMULATOR NOTE 2
	NOTE 1. MANUAL SHIPPED TO BE CONSISTENT WITH MODULE SHIPPED IN MACHINE.	
	2. CONSOLE EMULATOR ROM IS TO BE SHIPPED ONLY IF M9312 IS SHIPPED.	
	* Do not ship to OEM. customers	

TITLE	1134A SHIPPING LIST	ASSY NO.	NONE	SIZE CODE	A PL	NUMBER	1134A-0-4	REV.	B	ECO NO.	1134A-00008
				SHEET	1	OF	1				

DEC FORM DEC 16-(325)-1031-N870
DRA 110