

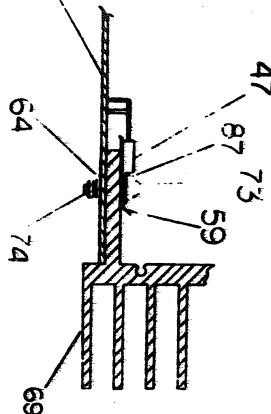




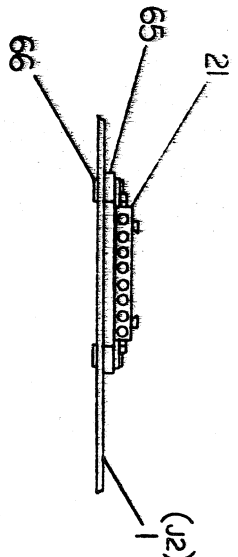
WIRE TABLE

ITEM NO	DESCRPT	FROM	TO	LENGTH
77	18TWP BLK	D11 ANODE	PAD 1	4.50
76	18TWP RED	D10 ANODE	PAD 2	4.50
77	18	D9 CATNODE	PAD 3	3.00
78	18	D12 CATNODE	PAD 10	3.75
79	18	D16 ANODE	PAD 11	1.50
80	18TWP BLK	D15 ANODE	PAD 6	2.00
81	18TWP RED	D17 CATNODE	PAD 7	2.75
82	18TWP BLK	D18 CATNODE	PAD 4	2.75
83	18TWP RED	D13 ANODE	D18 CAT	3.50
84	18TWP BLK	D14 ANODE	D17 CAT	3.50
85	18	D9 ANODE	PAD 9	3.00

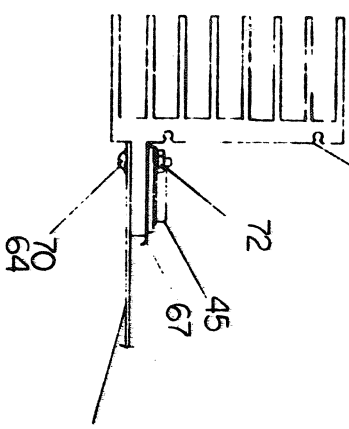
AT LEAST ITEM NO. 77 AND USE PROPER COLOR



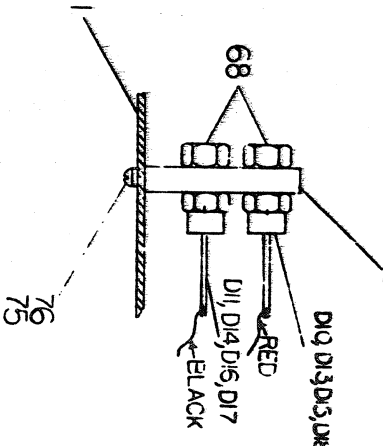
VIEW D-D  
SCALE: NONE



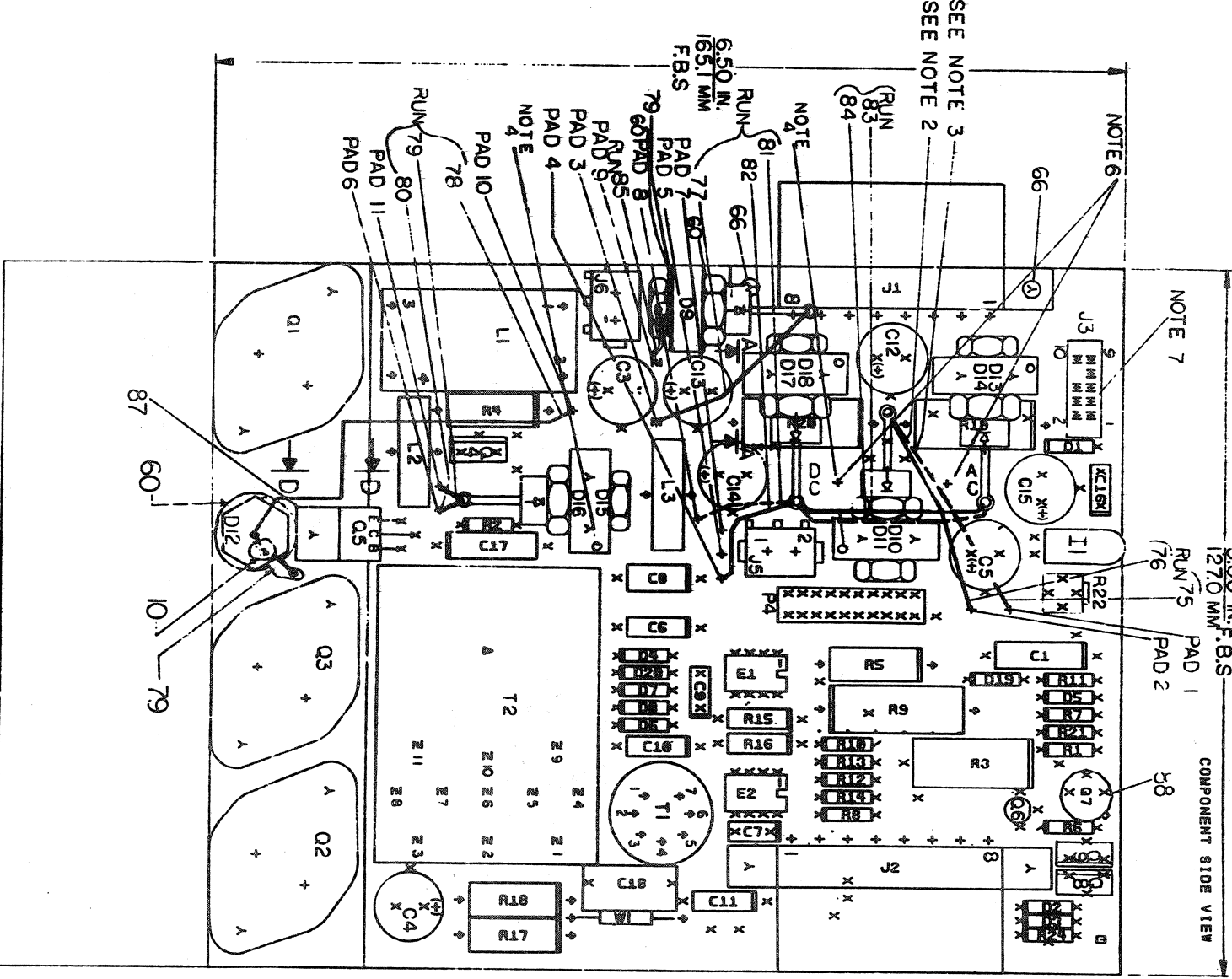
VIEW B-B  
SCALE: NONE



VIEW C-C  
SCALE: NONE



VIEW A-A  
SCALE: NONE  
TYP. 4 PLACES



- NOTES:
- SEE SHEET 4 OF 4 FOR DIODE WIRING.
  - SOLID LINE INDICATES WIRE FROM THE TOP DIODE.
  - DASHED LINE INDICATES WIRE FROM BOTTOM DIODE.
  - WIRE HOLE AT TOP OF HEATSHINK MUST FACE PROPER WAY TO ALLOW INSERTION OF CARD GAUGE.
  8. TIGUE RECOMMENDATION.
  - 3.03 INCHES DIA. HOLE IN MILL 555 T-1000.
  - FROM GREEN HEAD.
  05. 81N-185 INSPECT TO MIL-STD-2000 FROM 100% TYP. SIDE.
  - 09-018 14N-185 INSPECT TO MIL-STD-2000 FROM 100% TYP. SIDE.

- NOTES:
- SOLDER ITEM NO. 55 AC DC WIRE TO REGULATOR. BOARD RED WIRE TO PTH MARKED DC. BLACK WIRE TO PTH MARKED AC.
  - WIRE ON TO J3 ITEM NO. 58.

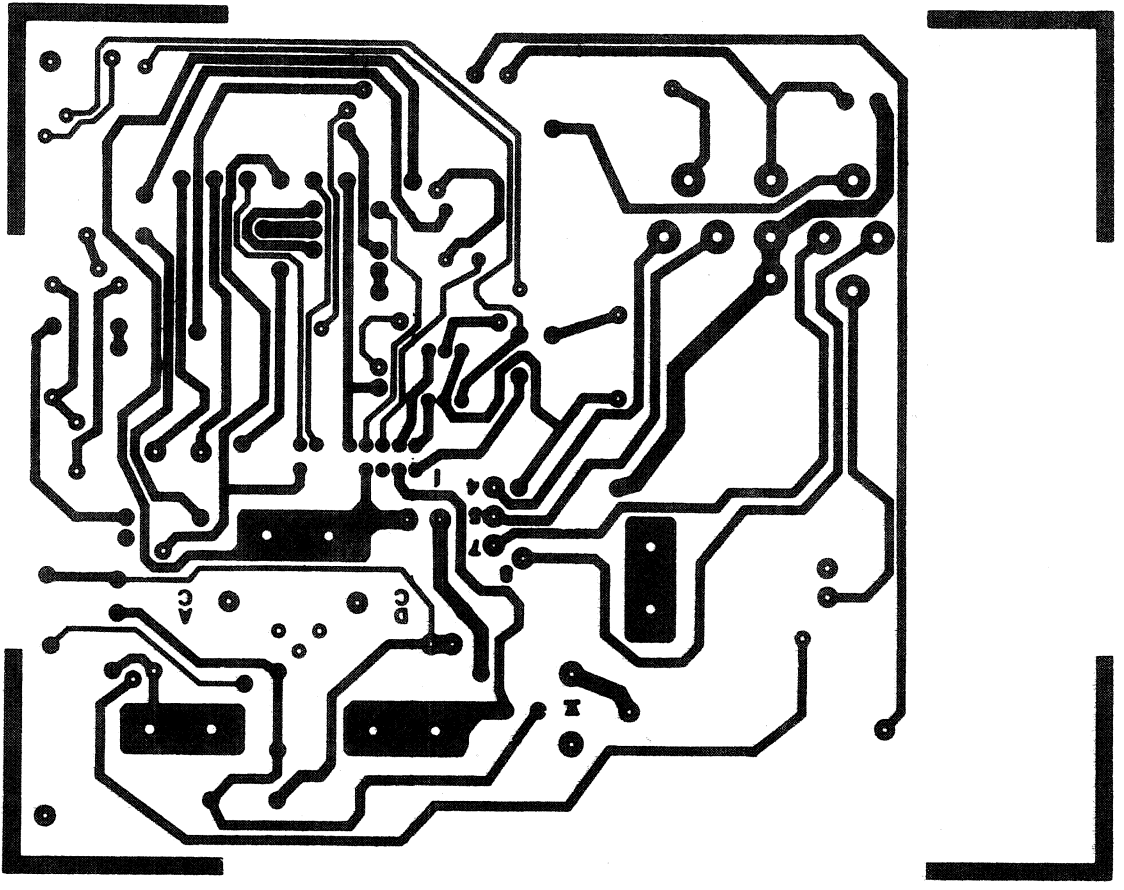
REV	CHG	NO	DATE	BY	CHK
1		1	11/11/77	G. POTTER	
2		2	11/11/77	G. POTTER	
3		3	11/11/77	G. POTTER	
4		4	11/11/77	G. POTTER	
5		5	11/11/77	G. POTTER	
6		6	11/11/77	G. POTTER	
7		7	11/11/77	G. POTTER	
8		8	11/11/77	G. POTTER	
9		9	11/11/77	G. POTTER	
10		10	11/11/77	G. POTTER	
11		11	11/11/77	G. POTTER	
12		12	11/11/77	G. POTTER	
13		13	11/11/77	G. POTTER	
14		14	11/11/77	G. POTTER	
15		15	11/11/77	G. POTTER	
16		16	11/11/77	G. POTTER	
17		17	11/11/77	G. POTTER	
18		18	11/11/77	G. POTTER	
19		19	11/11/77	G. POTTER	
20		20	11/11/77	G. POTTER	
21		21	11/11/77	G. POTTER	
22		22	11/11/77	G. POTTER	
23		23	11/11/77	G. POTTER	
24		24	11/11/77	G. POTTER	
25		25	11/11/77	G. POTTER	
26		26	11/11/77	G. POTTER	
27		27	11/11/77	G. POTTER	
28		28	11/11/77	G. POTTER	
29		29	11/11/77	G. POTTER	
30		30	11/11/77	G. POTTER	
31		31	11/11/77	G. POTTER	
32		32	11/11/77	G. POTTER	
33		33	11/11/77	G. POTTER	
34		34	11/11/77	G. POTTER	
35		35	11/11/77	G. POTTER	
36		36	11/11/77	G. POTTER	
37		37	11/11/77	G. POTTER	
38		38	11/11/77	G. POTTER	
39		39	11/11/77	G. POTTER	
40		40	11/11/77	G. POTTER	
41		41	11/11/77	G. POTTER	
42		42	11/11/77	G. POTTER	
43		43	11/11/77	G. POTTER	
44		44	11/11/77	G. POTTER	
45		45	11/11/77	G. POTTER	
46		46	11/11/77	G. POTTER	
47		47	11/11/77	G. POTTER	
48		48	11/11/77	G. POTTER	
49		49	11/11/77	G. POTTER	
50		50	11/11/77	G. POTTER	
51		51	11/11/77	G. POTTER	
52		52	11/11/77	G. POTTER	
53		53	11/11/77	G. POTTER	
54		54	11/11/77	G. POTTER	
55		55	11/11/77	G. POTTER	
56		56	11/11/77	G. POTTER	
57		57	11/11/77	G. POTTER	
58		58	11/11/77	G. POTTER	
59		59	11/11/77	G. POTTER	
60		60	11/11/77	G. POTTER	
61		61	11/11/77	G. POTTER	
62		62	11/11/77	G. POTTER	
63		63	11/11/77	G. POTTER	
64		64	11/11/77	G. POTTER	
65		65	11/11/77	G. POTTER	
66		66	11/11/77	G. POTTER	
67		67	11/11/77	G. POTTER	
68		68	11/11/77	G. POTTER	
69		69	11/11/77	G. POTTER	
70		70	11/11/77	G. POTTER	
71		71	11/11/77	G. POTTER	
72		72	11/11/77	G. POTTER	
73		73	11/11/77	G. POTTER	
74		74	11/11/77	G. POTTER	
75		75	11/11/77	G. POTTER	
76		76	11/11/77	G. POTTER	
77		77	11/11/77	G. POTTER	
78		78	11/11/77	G. POTTER	
79		79	11/11/77	G. POTTER	
80		80	11/11/77	G. POTTER	
81		81	11/11/77	G. POTTER	
82		82	11/11/77	G. POTTER	
83		83	11/11/77	G. POTTER	
84		84	11/11/77	G. POTTER	
85		85	11/11/77	G. POTTER	
86		86	11/11/77	G. POTTER	
87		87	11/11/77	G. POTTER	
88		88	11/11/77	G. POTTER	
89		89	11/11/77	G. POTTER	
90		90	11/11/77	G. POTTER	
91		91	11/11/77	G. POTTER	
92		92	11/11/77	G. POTTER	
93		93	11/11/77	G. POTTER	
94		94	11/11/77	G. POTTER	
95		95	11/11/77	G. POTTER	
96		96	11/11/77	G. POTTER	
97		97	11/11/77	G. POTTER	
98		98	11/11/77	G. POTTER	
99		99	11/11/77	G. POTTER	
100		100	11/11/77	G. POTTER	

SIGNATURES	DATE	TITLE
DRN. J. J. J.	11-11-77	DESIGNER
CHK. D. J. J.	11-11-77	CHECKER
ENG. J. J. J.	11-11-77	ENGINEER
PROD. J. J. J.	11-11-77	PRODUCER
SCALE 2-1		
SIZE CODE		
NUMBER		
REV		
1		
2		
3		
4		
5		
6		
7		
8		
9		
10		
11		
12		
13		
14		
15		
16		
17		
18		
19		
20		
21		
22		
23		
24		
25		
26		
27		
28		
29		
30		
31		
32		
33		
34		
35		
36		
37		
38		
39		
40		
41		
42		
43		
44		
45		
46		
47		
48		
49		
50		
51		
52		
53		
54		
55		
56		
57		
58		
59		
60		
61		
62		
63		
64		
65		
66		
67		
68		
69		
70		
71		
72		
73		
74		
75		
76		
77		
78		
79		
80		
81		
82		
83		
84		
85		
86		
87		
88		
89		
90		
91		
92		
93		
94		
95		
96		
97		
98		
99		
100		

MS#66929

THIS DRAWING AND SPECIFICATION, HEREIN, ARE THE PROPERTY OF THE UNITED STATES GOVERNMENT AND SHALL NOT BE REPRODUCED OR COPIED OR USED IN ANY MANNER WITHOUT THE WRITTEN PERMISSION OF THE DIRECTOR, ARMY ELECTRONIC CENTER, CONVENT 0377 DIGITAL EQUIPMENT CORPORATION

5012342C 5412343



8 7 6 5 4 3 2 1

5412343-0-0

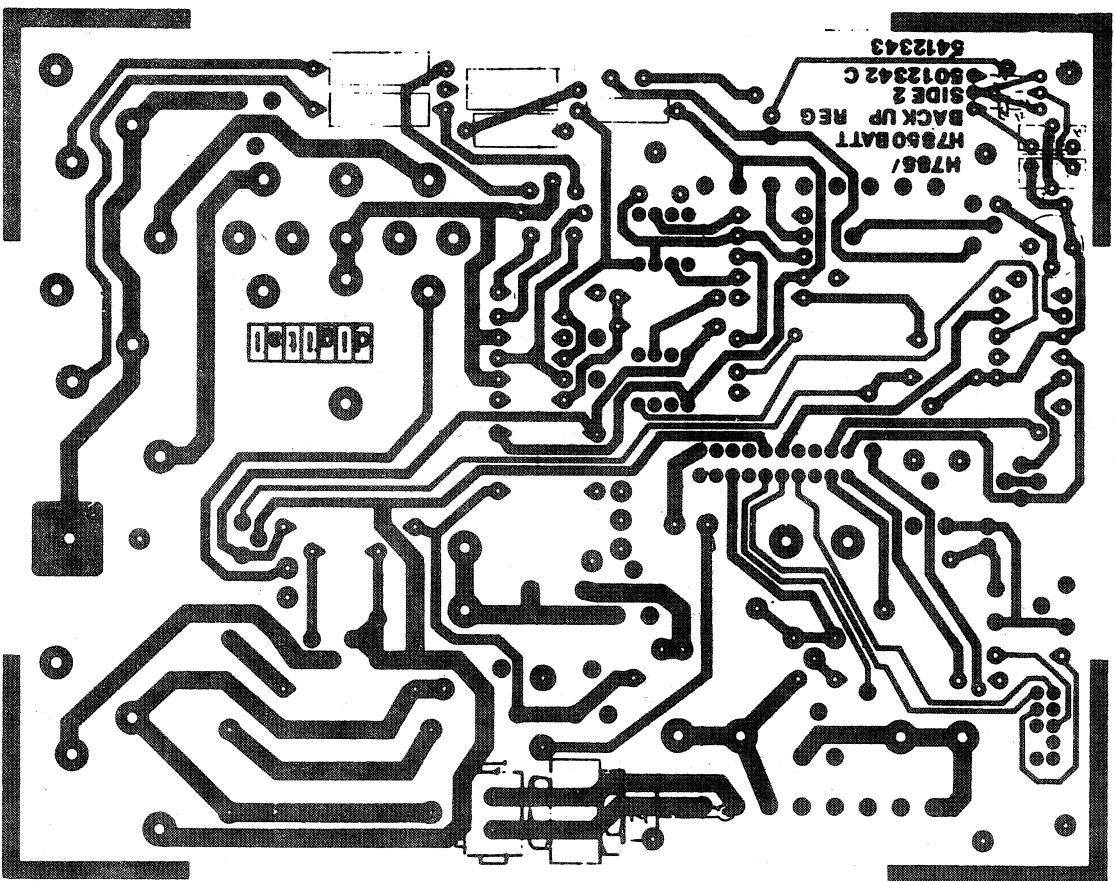
D U A

2

TITLE	SIZE/CODE	NUMBER	REV.
H785 BATTERY BACKUP REGULATOR	D J/A	5412343-0-0	F
SCALE 2/1	SHEET 2 OF 5	DIST	

8 7 6 5 4 3 2 1

THIS DRAWING AND SPECIFICATION, WITH ALL THE  
RIGHTS OF DESIGN, INVENTION, COPYRIGHT, AND  
PATENT, ARE THE PROPERTY OF THE U.S. GOVERNMENT  
AND ARE NOT TO BE REPRODUCED OR TRANSMITTED  
IN ANY FORM OR BY ANY MEANS, ELECTRONIC OR  
MECHANICAL, INCLUDING PHOTOCOPYING, RECORDING,  
OR BY ANY INFORMATION STORAGE AND RETRIEVAL  
SYSTEM, WITHOUT WRITTEN PERMISSION  
CONTRACT 5977 DATA FORMER CORPORATION



REV.	DATE	BY	CHK
1	10/1/77	1	1

TITLE	SIZE	CODE	NUMBER	REV.
H785 BATTERY BACKUP REGULATOR	D	UA	5412343-0-0	F
SCALE 2/1	SHEET 3 OF 5	DIST.		

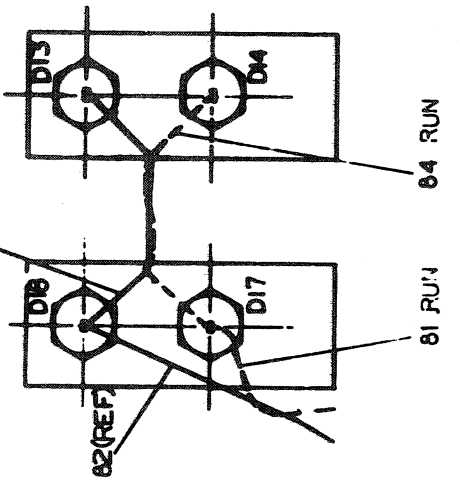
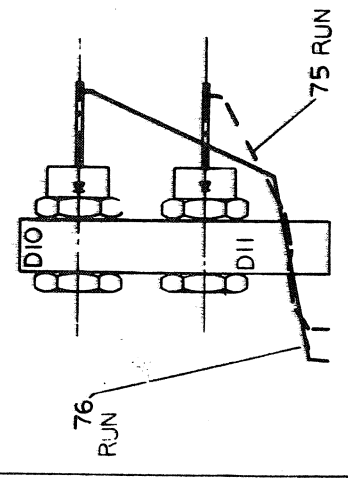
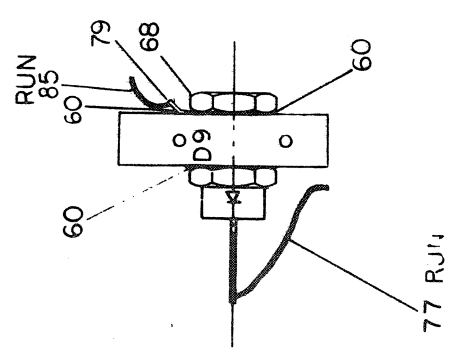
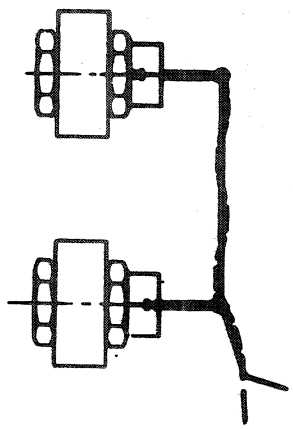
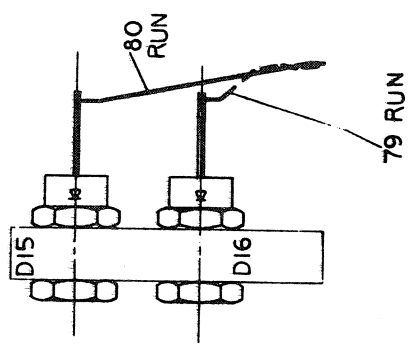
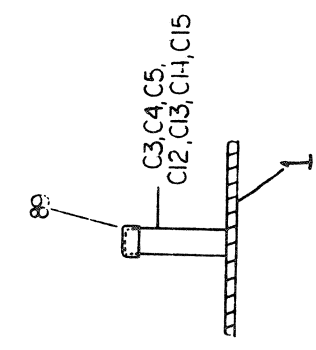
452

THIS DRAWING AND THE INFORMATION CONTAINED HEREIN ARE THE PROPERTY OF DIGITAL EQUIPMENT CORPORATION. IT IS TO BE USED IN WHOLE OR IN PART FOR THE MANUFACTURE OF DIGITAL EQUIPMENT CORPORATION'S PRODUCTS ONLY. NO PART OF THIS DRAWING IS TO BE REPRODUCED OR TRANSMITTED IN ANY FORM OR BY ANY MEANS, ELECTRONIC OR MECHANICAL, INCLUDING PHOTOCOPYING, RECORDING, OR BY ANY INFORMATION STORAGE AND RETRIEVAL SYSTEM, WITHOUT WRITTEN PERMISSION OF DIGITAL EQUIPMENT CORPORATION.

NOTES:

1. WIRING INFORMATION IS ON SHEET 1 OF 4.

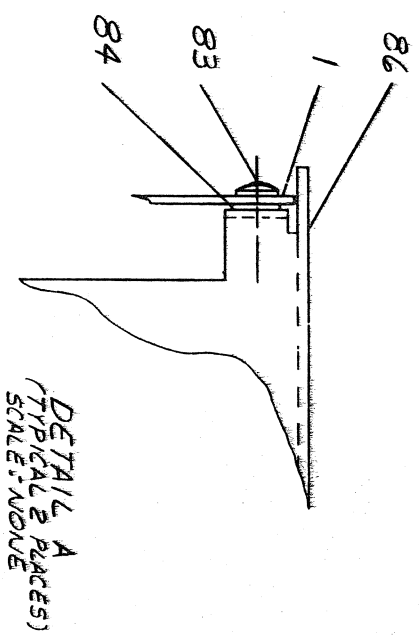
2. DIODES TO BE ASSEMBLED TO HEAT-SINKS AND WIRED AS SHOWN BEFORE INSTALLING TO BOARD.



REVISIONS	
CHK	CHANGE NO. REV.

TITLE		H785 BATTERY BACKUP REGULATOR		DUA 5412343-0-0		REV. F
SCALE		2/1		SHEET 4 OF 5		1

8  
7  
6  
5  
4  
3  
2



TITLE		H785 BATTERY		REV.	
BACKUP REGULATOR		DUA 5412343-C-C		F	
SCALE 1/1		SHEET 5 OF 5		DATE	

DEJA 54123-43-0-V

LINE ITEM DOCUMENT NO.

PART NO.

DESCRIPTION

QTY REFERENCE DESIGNATORS

1 1 D-MD-5012342-000

5012342-00

ETCH BRD 54-12343

1

C10

C3-C5

C7

CR

C9

C6,C11

C12-C14

2 2 MFD 35V 10% 150S S.TA

1

C10

C3-C5

C7

CR

C9

C6,C11

C12-C14

3 3 MFD 50V 10% 672D AL EL

1

C10

C3-C5

C7

CR

C9

C6,C11

C12-C14

4 4 MFD 100V 5% 200PPM DM155

1

C10

C3-C5

C7

CR

C9

C6,C11

C12-C14

5 5 MFD 50V 2% M.POLYCARB

1

C10

C3-C5

C7

CR

C9

C6,C11

C12-C14

6 6 MFD 100V 5% 200PPM DM155

1

C10

C3-C5

C7

CR

C9

C6,C11

C12-C14

7 7 MFD 35V 10% 150D S.TA

1

C10

C3-C5

C7

CR

C9

C6,C11

C12-C14

8 8 MFD 20V 10% 672D AL EL

1

C10

C3-C5

C7

CR

C9

C6,C11

C12-C14

9 9 MFD 6.3V 10% 672D AL EL

1

C10

C3-C5

C7

CR

C9

C6,C11

C12-C14

10 10 MFD 50V 20% 250 DISC

1

C10

C3-C5

C7

CR

C9

C6,C11

C12-C14

11 11 MFD 20V 10% 150D S.TA

1

C10

C3-C5

C7

CR

C9

C6,C11

C12-C14

12 12 MFD 100V 20% 250 DISC

1

C10

C3-C5

C7

CR

C9

C6,C11

C12-C14

13 13 MFD 100V 20% 250 DISC

1

C10

C3-C5

C7

CR

C9

C6,C11

C12-C14

14 14 MFD 100V 20% 250 DISC

1

C10

C3-C5

C7

CR

C9

C6,C11

C12-C14

15 15 MFD 100V 20% 250 DISC

1

C10

C3-C5

C7

CR

C9

C6,C11

C12-C14

16 16 MFD 100V 20% 250 DISC

1

C10

C3-C5

C7

CR

C9

C6,C11

C12-C14

17 17 MFD 100V 20% 250 DISC

1

C10

C3-C5

C7

CR

C9

C6,C11

C12-C14

18 18 MFD 100V 20% 250 DISC

1

C10

C3-C5

C7

CR

C9

C6,C11

C12-C14

19 19 MFD 100V 20% 250 DISC

1

C10

C3-C5

C7

CR

C9

C6,C11

C12-C14

20 20 MFD 100V 20% 250 DISC

1

C10

C3-C5

C7

CR

C9

C6,C11

C12-C14

21 21 MFD 100V 20% 250 DISC

1

C10

C3-C5

C7

CR

C9

C6,C11

C12-C14

22 22 MFD 100V 20% 250 DISC

1

C10

C3-C5

C7

CR

C9

C6,C11

C12-C14

23 23 MFD 100V 20% 250 DISC

1

C10

C3-C5

C7

CR

C9

C6,C11

C12-C14

24 24 MFD 100V 20% 250 DISC

1

C10

C3-C5

C7

CR

C9

C6,C11

C12-C14

25 25 MFD 100V 20% 250 DISC

1

C10

C3-C5

C7

CR

C9

C6,C11

C12-C14

26 26 MFD 100V 20% 250 DISC

1

C10

C3-C5

C7

CR

C9

C6,C11

C12-C14

27 27 MFD 100V 20% 250 DISC

1

C10

C3-C5

C7

CR

C9

C6,C11

C12-C14

28 28 MFD 100V 20% 250 DISC

1

C10

C3-C5

C7

CR

C9

C6,C11

C12-C14

29 29 MFD 100V 20% 250 DISC

1

C10

C3-C5

C7

CR

C9

C6,C11

C12-C14

30 30 MFD 100V 20% 250 DISC

1

C10

C3-C5

C7

CR

C9

C6,C11

C12-C14

31 31 MFD 100V 20% 250 DISC

1

C10

C3-C5

C7

CR

C9

C6,C11

C12-C14

32 32 MFD 100V 20% 250 DISC

1

C10

C3-C5

C7

CR

C9

C6,C11

C12-C14

33 33 MFD 100V 20% 250 DISC

1

C10

C3-C5

C7

CR

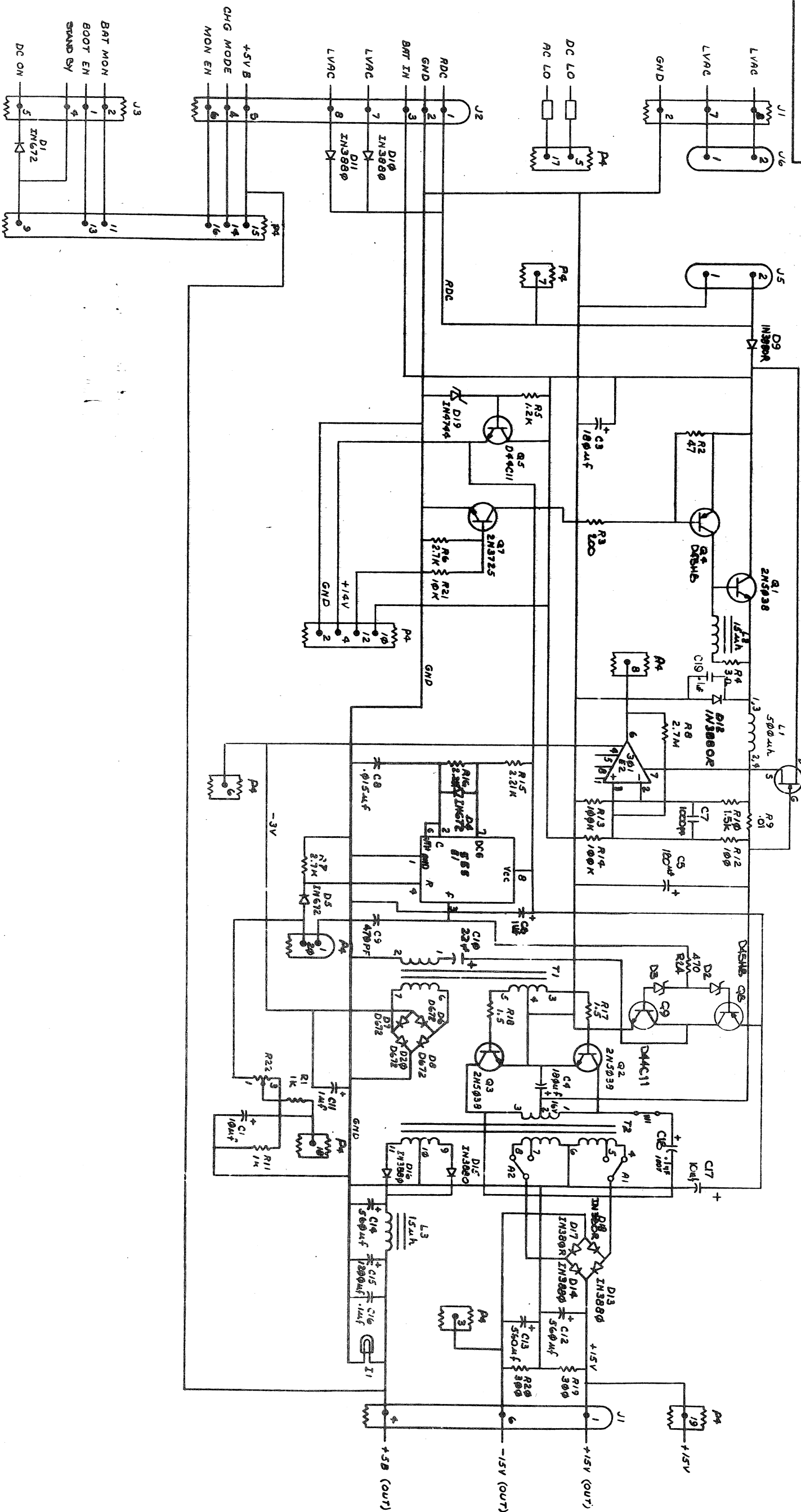


31	31	1309680-00	2.7 M 1/4W 5%	CC	(13-00)	1	R8
32	32	1313712-00	.01 5W 3%	WM	(13-00)	1	R9
33	33	1300365-00	1 K 1/4W 5%	CC	(13-00)	2	P1,R11
34	34	1300229-00	100 1/4W 5%	CC	(13-00)	1	R12
35	35	1302466-00	100 K 1/4W 5%	CC	(13-00)	2	R13,R14
36	36	1312404-00	2.21 K 1/2W 1% PN60D-7 100PPH	WM	(13-00)	2	R15,R16
37	37	1313579-00	1.5 3W 5%	CC	(13-00)	2	R17,R18
38	38	1309855-00	300 2W 5%	CC	(13-00)	2	R19,R20
39	39	1300479-00	10 K 1/4W 5%	CC	(13-00)	1	R21
40	40	1310852-00	200 20% POT	S		1	R22
41	41	1300391-00	1.5 K 1/4W 5%	CC	(13-00)	1	R19
42	42	1300316-00	470 1/4W 5%	CC	(13-00)	1	R24
43	43	BLANK					
44	44	BLANK					
45	45	1510969-00	2N 5038 NPN 140WC SI 90 50 Y			3	Q1-Q3
46	46	1510708-00	D 45H8 PNP 50WT SI 60 60 Y			2	Q4,Q8
47	47	1512790-00	D 44C11 NPN 30W SI 80 40			2	Q5,Q9
48	48	1511686-00	DECS433 FET N 350MW 10 25 1A 20V			1	Q6
49	49	1510959-00	2N 3725 NPN 3.5WC SI 50 60 P			1	Q7
50	50	BLANK					
51	51	1612593-00	500 UH 6A	S		1	L1
52	52	1613874-00	CHOKE,15UH 4A	S		1	L2,L3
53	53	1613876-00	XFMR,POWER,RATIO 1:12 7PIN	S		2	T1
54	54	1613075-00	XFMR,POWER,RATIO 1:12:3 100UH			1	T2
55	55	7013690-00	CABLE 2 PIN AC DC LOW			1	
56	56	1911944-00	555CN TIMER,FUNCT,BLOCK			1	E1
57	57	1910282-00	301AN OP AMP			1	E2
58	58	7013384-1D	10 CONDUCTOR EXTENDER CABLE			1	
59	59	1213071-06	INSULATOR,RUBBER SILICONE			1	
60	60	1213071-05	INSULATOR,RUBBER THERMAL			3	
61	61	7417414-00	HEAT SINK (DUAL)			4	
62	62	7417413-00	HEAT SINK (SINGLE)			1	
63	63	9006655-00	WASHER, FLAT, .312 O.D. X .125 ID X .025 T			1	
64	64	9006655-00	WASHER, FLAT, .312 O.D. X .156 I.D. X .027			6	
65	65	9006656-00	WASHER, NYLON, FLAT .04 .375 OD X .031 THK			2	
66	66	9006706-00	FYELT, POLED FLANGE, .120 OD X .260 LG			4	
67	67	1213071-02	INSULATOR,RUBBER SILICONE, SM			3	
68	68	9006565-00	NUT,KEP 10-32X 3/8 AF	CS/		10	
69	69	1210737-04	HEAT SINK,REGULATOR			1	
70	70	9007753-04	SCREW,BIND,SLOT, 6-32X 9/16 SS/PAS			6	
71	71	9007649-00	***** THIS ITEM IS NOT USED *****				
72	72	9008165-00	NUT,KEP 6-32X1/4 AF	CS/		6	
73	73	9008033-01	SCREW,PAN ,PHIL, 4-40X 9/16 SS/PAS	CS		1	
74	74	9006557-00	NUT,KEP 4-40X 1/4 AF	CS		1	
75	75	9006632-00	WASHER,LOCK,INT.,.260OD X .120ID X .015 THK			8	
76	76	9006010-04	SCREW,BIND,SLOT, 4-40X 5/16 SS/PAS			8	
77	77	9107430-02	WIRE,STRUC,182-6,IPVC (UL1429)			8	
78	78	9009185-00	JUMPER, WIRE, INSULATED, BLACK BAND			1	W1

DIGITAL EQUIPMENT CORPORATION  
HAYWARD, CALIFORNIA 94505  
PARTS LIST  
H785 BATTERY BACKUP REGULATOR  
DOCUMENT NUMBER  
5412343-00-00P  
REV



THIS DRAWING AND SPECIFICATIONS HEREIN ARE THE PROPERTY OF THE UNITED STATES GOVERNMENT AND ARE NOT TO BE REPRODUCED OR USED IN ANY MANNER WITHOUT THE WRITTEN PERMISSION OF THE GOVERNMENT.



REV.	CHANGE NO.	REVISIONS
1	1	INITIAL DESIGN
2	2	REVISED FOR MANUFACTURE
3	3	REVISED FOR MANUFACTURE
4	4	REVISED FOR MANUFACTURE
5	5	REVISED FOR MANUFACTURE
6	6	REVISED FOR MANUFACTURE
7	7	REVISED FOR MANUFACTURE
8	8	REVISED FOR MANUFACTURE
9	9	REVISED FOR MANUFACTURE
10	10	REVISED FOR MANUFACTURE

REV.	CHANGE NO.	REVISIONS
1	1	INITIAL DESIGN
2	2	REVISED FOR MANUFACTURE
3	3	REVISED FOR MANUFACTURE
4	4	REVISED FOR MANUFACTURE
5	5	REVISED FOR MANUFACTURE
6	6	REVISED FOR MANUFACTURE
7	7	REVISED FOR MANUFACTURE
8	8	REVISED FOR MANUFACTURE
9	9	REVISED FOR MANUFACTURE
10	10	REVISED FOR MANUFACTURE

H785 BATTERY  
 BACKUP REGULATOR  
 SCALE 1 OF 1  
 SHEET 1 OF 1  
 DWT

[illegible]

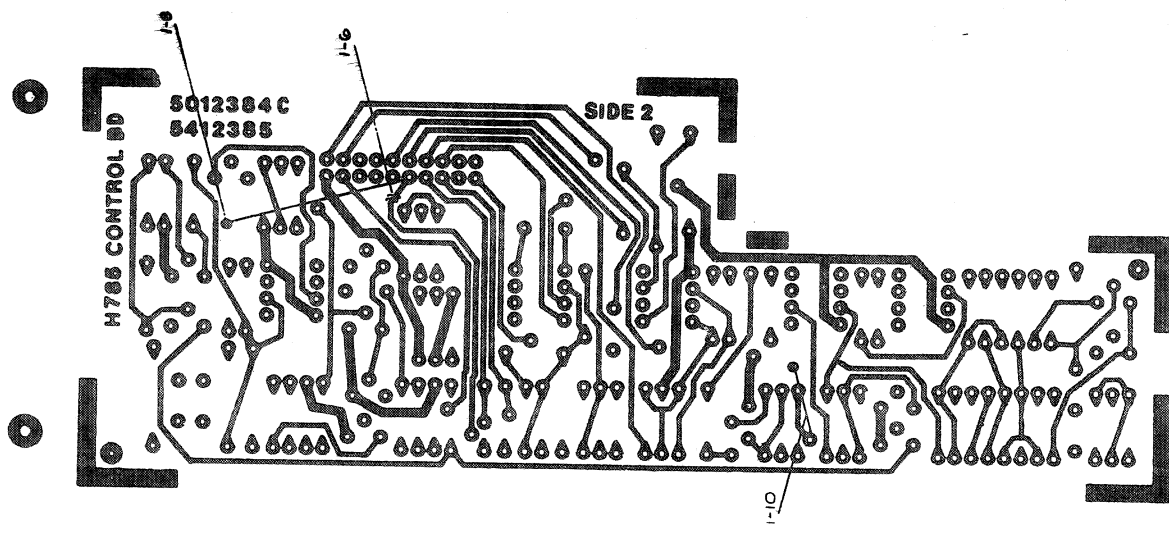
Q. A 5412 785-2-2



465

1 2 3 4 5 6 7 8

THIS DRAWING AND SPECIFICATION HEREIN ARE THE PROPERTY OF THE UNITED STATES GOVERNMENT AND SHALL NOT BE REPRODUCED OR COPIED OR USED IN WHOLE OR IN PART WITHOUT WRITTEN PERMISSION OF THE SECRETARY OF THE ARMY. (1977) DIGITAL EQUIPMENT CORP. "QUANTUM"



5412385-0-0

DIVISION  
Circuit

TITLE H785 CONTROL BD  
SCALE 2/1  
SHEET 3 OF 3  
PART NO. DUA 5412385-0-0  
NUMBER  
REV. E

6161



LINE ITEM DOCUMENT NO.

PART NO.

DESCRIPTION

QTY REFERENCE DESIGNATORS

1	D-MD-5012384-0-0	5012384-00	5412385	1	C1,C4,C6,C13
2		1001610-01	.01 MFD 100V DR 50V Z5U DISC/BOOPF MIN	4	C2
3		1004813-00	10 MFD 20V 10X 150D 8.TA	1	C3,C5,C11
4		1001776-00	1 MFD 35V 10X 150D 8.TA	3	C7
5		1000061-00	8200.0 MMF 100V 10X 463UM MYLR	1	C8,C12
6		1005965-00	.47 MFD 35V 10X 150D 8.TA	2	C9
7		1000009-00	33.0 MMF 100V 5X200PPH DM158	1	C14
8		1005306-00	6.8MFD 35V 10X 150D 8.TA	9	D1,D2,D3,D5,D6,D9,D10,D12,D13
9		1105275-00	D 672 TR-15NB PIV= 60V 8P	1	D4
10		1109988-00	1N 964B VZ= 13.0 5X .40M Y	2	D11,D15
11		1102808-00	1N 752A VZ= 5.6 5X .40M P	1	D14
12		1110968-00	2N 5062 SCR2100V I=.8A T092	1	D7
13		1110713-00	52710910 VZ= 5.1 2X	1	D16
14		1114913-00	VZ= 18.0 10X	2	R32,R38
15		1300398-00	1.8 K 1/4W 5X	11	R1,R13,R18,R19,R20,R21,R28,
16		1300479-00	10 K 1/4W 5X	CONT	R31,R42-R44
17		1300229-00	100 1/4W 5X	5	R3,R5,R25,R29,R45
18		1301322-00	180 1/4W 5X	1	R4
19		1302177-00	47 K 1/4W 5X	1	R6
20		1302394-00	30 K 1/4W 5X	1	R7
21		1302091-00	330 K 1/4W 5X	1	R8
22		1300365-00	1 K 1/4W 5X	6	R2,R9,R12,R14,R37,R40
23		1300426-00	2.7 K 1/4W 5X	1	R16
24		1302092-00	220 K 1/4W 5X	1	R15
25		1301423-00	6.8 K 1/4W 5X	1	R17
26		1302871-00	1.21 K 1/4W 1X RNS5D-F 100PPH	1	R35
27		1302955-00	750 1/4W 1X RNS5D-F 100PPH	1	R34
28		1303312-00	10.0 K 1/4W 1X RNS5D-F 100PPH	1	R36
29		1302466-00	100 K 1/4W 5X	3	R22,R39,R41

REVISION HISTORY VARIATIONS FOR THIS ASSY.

FIRST USED ON:

DIGITAL EQUIPMENT CORPORATION  
MAYNARD, MASSACHUSETTS

CHK ECD NO REV  
W.H 00003 E 00

MADE BY: F.MALANSON

DATE: 21-FEB-78

TITLE

PARTS LIST

CHECKED: F.BEIDMAN

DATE: 21-FEB-78

H785 CONTROL BOARD

DSN.ENG.: J.MERCURI

DATE: 21-FEB-78

SIZE: CODE: DOCUMENT NUMBER

REV

PROD.: R.B.KING

DATE: 21-FEB-78

K PL 5412385-0-0

IE

RESP.ENG.: J.MERCURI

DATE: 21-FEB-78

ASSY.NO.: D-UA-5412385-0-0

EDIT

THIS DRAWING AND SPECIFICATIONS HEREIN, ARE THE PROPERTY OF DIGITAL EQUIPMENT CORPORATION AND SHALL NOT BE REPRODUCED OR COPIED OR USED IN WHOLE OR IN PART AS THE BASIS FOR THE MANUFACTURE OR SALE OF ITEMS WITHOUT WRITTEN PERMISSION.

COPYRIGHT 1978, DIGITAL EQUIPMENT CORPORATION

LINE ITEM    DOCUMENT NO.    PART NO.    DESCRIPTION    QTY    REFERENCE DESIGNATORS

30	1300271-00	220	1/4W 5% CC	(13-00	1	R26
31	1303179-00	8.2 K	1/4W 5% CC	(13-00	1	R27
32	1302751-00	30	1/4W 5% CC	(13-00	1	R30
33	1309417-00	27.4 K	1/4W 1% RN55D-F 100PPM	(13-00	1	R33
34	1503409-00	DEC6534D	PNP 310MW SI 40 90 P		4	Q1,Q4,Q7,Q8
35	1510233-00	2N 5460	FET 310MW SIP CHNNL		1	Q2
36	1511686-00	DEC5433	FET N 350MW 10 25 1A 20U		4	Q3,Q9,Q10,Q11
37	1509338-00	DEC6531B	NPN 310MW SI 40 90 P		1	Q5
38	1510705-00	XA 05	NPN 500MW SI 60 50 P		1	Q6
39	1911944-00		555CN TIMER,FUNCT.BLOCK		2	E1,E2
40	1910282-00		301AN OP AMP		3	E3,E4,E5
41	1300391-00	1.5 K	1/4W 5% CC	(13-00	2	R10,R24
42	1213335-00	HEADER	20POS RT ANGLE FOR 12-13334		1	J4
43	1300439-00	3.3 K	1/4W 5% CC	(13-00	1	R11
44	1212416-02	THERMOSTAT,00160,N/C,SPST,AUTO RESET			2	S1,S2
45	1300432-00	3 K	1/4W 5% CC	(13-00	1	R23
46	1109990-00	1N 757A VZ=	9.1 5% .40W P		1	D8
47	1005965-00	.47 MFD	35V 10% 150D S.TA	(10-00	1	C10
48	9009157-00	ADHESIVE, PERMABOND #101			A/R	
49	9105740-55	WIRE(WRAP)30AWG	UL1423	(91-00	A/R	

TITLE		PARTS LIST		SIZE	CODE	DOCUMENT NUMBER	REV
DIGITAL EQUIPMENT CORPORATION		M785 CONTROL BOARD					
MAYNARD, MASSACHUSETTS				K	PL	5412385-0-0	E



W3 IS AN ENGINEERING OPTION TO BE  
TERMINATED AT 70 HOURS DURING...

CONTROL BOARD		SIZE	CODE	QUANTITY IN
D	CS	5412385-0-1		
DIST.				