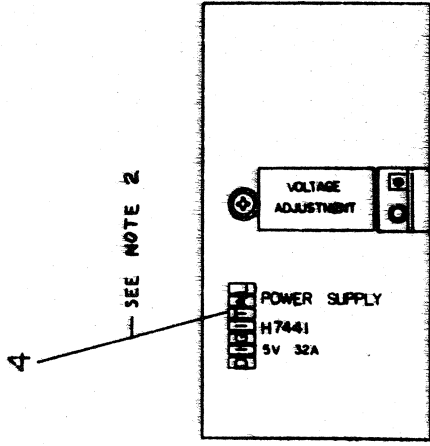
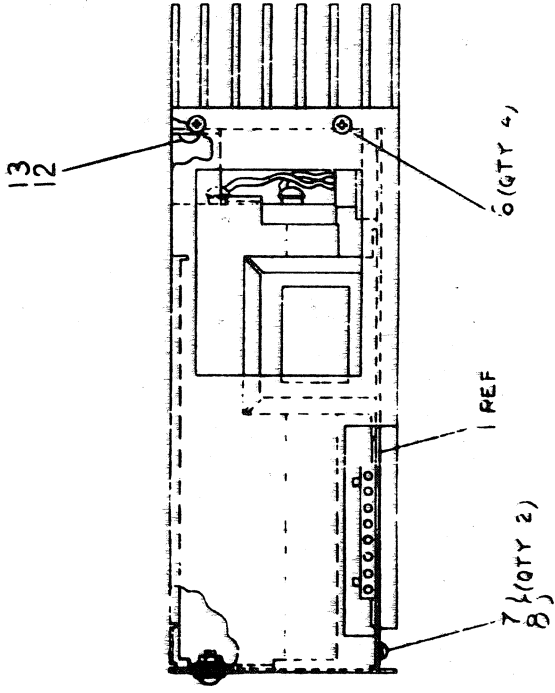




NOTES:

1. ATTACH (PEEL) WHERE FROM ITEM (1) RESULTS  
POSITIVE (ANY) TERM OF CAPACITY ITEM (2)  
ATTACH REMAINING (SUCH) WHERE TO THE  
(=) TERMINUS OF THE CAP (ITEM 3).
2. PEEL AND ATTACH ITEM 4 TO ITEM 2 AS  
SHOWN.



1	WASHER, LOCK INT. TIGHT	6	9006633	13
1	SCR, PHL PAN HD.	38	9006022-01	12
1	NUT, KEPS	31	9006560	11
1	WASHER, FLAT	6	9006659	10
1	SCR, PHL PAN HD.	31	9006021-01	9
2	WASHER FLAT	4	9008172	8
2	SCR, PHL PAN HD	25	9008301-01	7
4	SCR, SELF TAPPING	31	9009142-2	6
1	CAPACITOR, 33K, 50 VDC	00	1808708-00	5
1	DECAL		B-1A-7416945-10	4
1	BRACKET, CAPACITOR		D-1A-7417543-0-0	3
1	BRACKET, REGULATOR		D-1A-5309756-09	2
1	REGULATOR, +5V, 32 A		D-1A-5412441-0-0	1

QUANTITY & VARIATION		DESCRIPTION	DRWG / PART NO.	ITEM NO.
ANGLES UP TO 50		UNLESS OTHERWISE SPECIFIED DIMENSIONS ARE IN INCHES		
SURFACE QUALITY		TOLERANCES		
DIMENSIONS		PREPARED BY		
MICRONOMETER		CHECKED BY		
1/16" TO 1/8"		1/8" TO 1/4"		
1/8" TO 1/4"		1/4" TO 1"		
1/4" TO 1"		1" TO 2"		
1" TO 2"		2" TO 4"		
2" TO 4"		4" TO 6"		
4" TO 6"		6" TO 8"		
6" TO 8"		8" TO 10"		
8" TO 10"		10" TO 12"		
10" TO 12"		12" TO 14"		
12" TO 14"		14" TO 16"		
14" TO 16"		16" TO 18"		
16" TO 18"		18" TO 20"		
18" TO 20"		20" TO 22"		
20" TO 22"		22" TO 24"		
22" TO 24"		24" TO 26"		
24" TO 26"		26" TO 28"		
26" TO 28"		28" TO 30"		
28" TO 30"		30" TO 32"		
30" TO 32"		32" TO 34"		
32" TO 34"		34" TO 36"		
34" TO 36"		36" TO 38"		
36" TO 38"		38" TO 40"		
38" TO 40"		40" TO 42"		
40" TO 42"		42" TO 44"		
42" TO 44"		44" TO 46"		
44" TO 46"		46" TO 48"		
46" TO 48"		48" TO 50"		
48" TO 50"		50" TO 52"		
50" TO 52"		52" TO 54"		
52" TO 54"		54" TO 56"		
54" TO 56"		56" TO 58"		
56" TO 58"		58" TO 60"		
58" TO 60"		60" TO 62"		
60" TO 62"		62" TO 64"		
62" TO 64"		64" TO 66"		
64" TO 66"		66" TO 68"		
66" TO 68"		68" TO 70"		
68" TO 70"		70" TO 72"		
70" TO 72"		72" TO 74"		
72" TO 74"		74" TO 76"		
74" TO 76"		76" TO 78"		
76" TO 78"		78" TO 80"		
78" TO 80"		80" TO 82"		
80" TO 82"		82" TO 84"		
82" TO 84"		84" TO 86"		
84" TO 86"		86" TO 88"		
86" TO 88"		88" TO 90"		
88" TO 90"		90" TO 92"		
90" TO 92"		92" TO 94"		
92" TO 94"		94" TO 96"		
94" TO 96"		96" TO 98"		
96" TO 98"		98" TO 100"		
98" TO 100"		100		

THIRD ANGLE PROJECTION	REMOVE BURRS AND BREAK SHARP CORNERS	DO NOT SCALE DRWG	MATERIAL SEE PARTS LIST	FINISH
ENG.	PROJ. ENG.	EXT HIGHER ASBY.	SCALE NONE	SHEET
PROD.			OF 1	DIST.
CHKD BY	DATE	13 4 A	UNIT ASSY	REV.
TITLE		H7441		
FIRST USED ON		13 4 A		
DATE		13 4 A		

CHK	CHARGE NO.	NEW
	H7441-00004	A
R DAY		
	H7441-00003	B
R GIST		
	H7441-00004	C
E.C. ROCKET R		

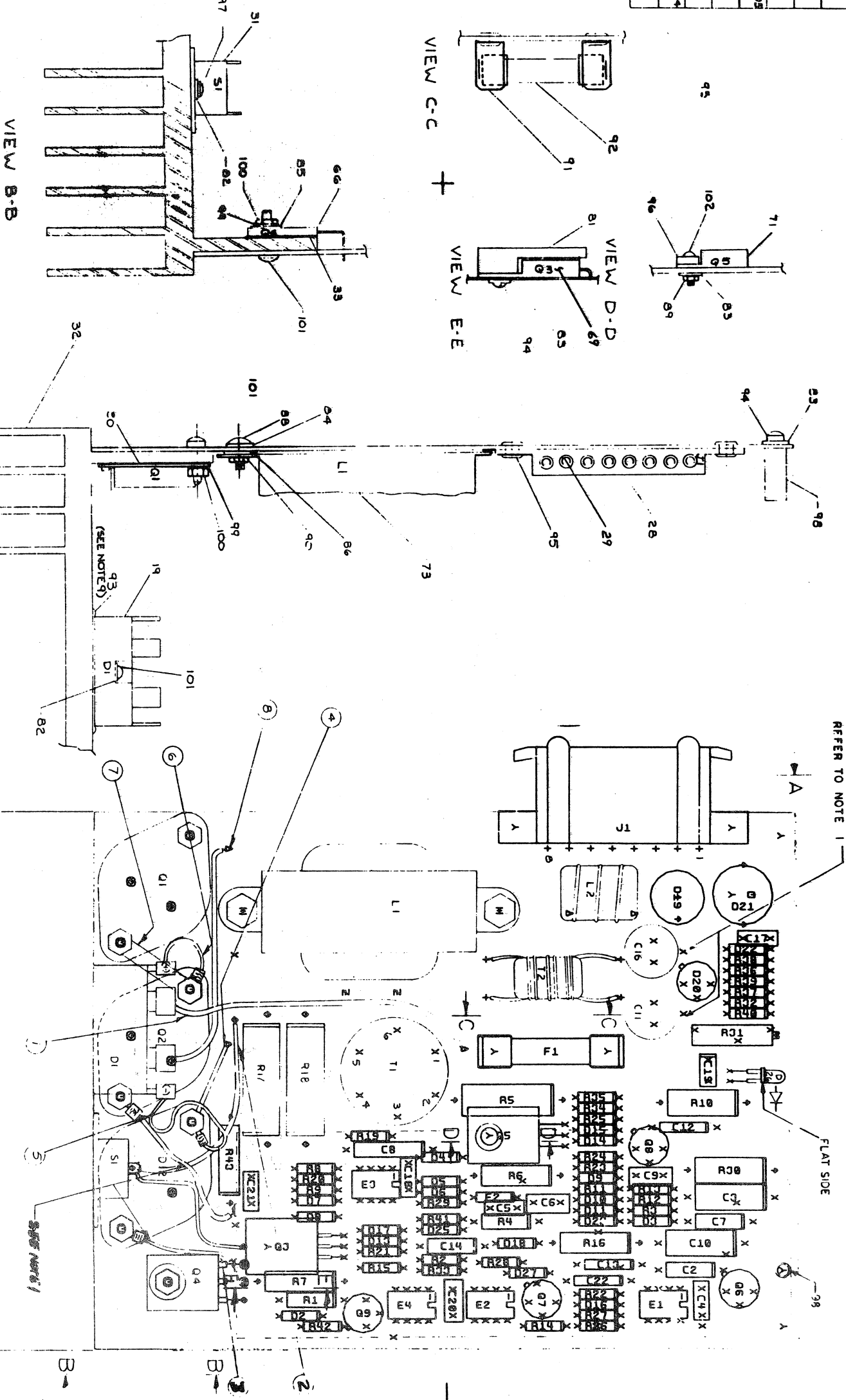


COMPONENT SIDE VIEW

WIRE & BUS STRAP RUNS

NO.	FROM	TO	WIRE OR BUS LENGTH
1	FEEDTHRU AT FI	TERMINAL D1	"14 AWG 4" SEE NOTE 3
2	S1	FEEDTHRU SHOWN	"10 AWG 3"
3	S1	FEEDTHRU SHOWN	"10 AWG 2.5"
4	D12	FEEDTHRU SHOWN	DEC PT #1214074-05 SEE NOTE 4
5	TERMINAL D1	D12	"14 AWG 3" SEE NOTE 5
6	TERMINAL D1	Q2	"14 AWG 2" SEE NOTE 6
7	Q2	Q1	DEC PT #1214074-04 SEE NOTE 7
8	TERMINAL D1	FEEDTHRU SHOWN	"14 AWG 2.75" SEE NOTE 2

NOTES: 1. MOUNT WIRES PER I.A. DRAWING NO. 1A TO 1274. RED WIRE TO CASE Q2 AND POSITIVE TERMINAL C1 & BLACK WIRE TO CASE D12 AND NEGATIVE TERMINAL C1.  
2. WIRE RUN 1 IS SOLDERED AT D1.  
3. WIRE RUN 2 IS SOLDERED AT D1.  
4. STRAP 1 (ITEM #26) IS SOLDERED AT FEEDTHROUGH SHOWN AND MOUNTED UNDER RING LUG OF D12.  
5. WIRE RUN 3 IS SOLDERED AT D1 AND CRIMPED TO RING LUG ITEM #87 OF D12.  
6. WIRE RUN 4 IS SOLDERED AT D1 AND CRIMPED TO RING LUG ITEM #87 OF Q2.  
7. BUS STRAP 7 (ITEM #25) IS MOUNTED UNDER RING LUG OF Q2 AND ON CASE OF Q1.  
8. TORQUE HARDWARE ON Q1, Q2, Q4 AND D12 TO BUNCH-UPS FROM NUT SIDE ONLY. TORQUE OTHER HARDWARE TO DEC STRAP VALVES.  
9. APPLY THERMAL COMPOUND TO D1 (ITEM #19) ONLY.



NOTES:

1. INDICATED DRILL POINTS AT C1 AND C6 SHOULD NOT BE USED FOR DRILL ALIGNMENT DURING MANUFACTURE. THESE OVERSIZED PADS WILL NOT CENTER WITH DRILL BORING.

CHANGE NO.	REV.
5412441-00007	H
5412441-00008	I
5412441-00009	J
5412441-00010	K
5412441-00011	L
5412441-00012	M
5412441-00013	N
5412441-00014	O
5412441-00015	P
5412441-00016	Q
5412441-00017	R
5412441-00018	S
5412441-00019	T
5412441-00020	U
5412441-00021	V
5412441-00022	W
5412441-00023	X
5412441-00024	Y
5412441-00025	Z

DATE	SIGNATURES
5/20/77	CHK'D. B. J. J.
5/20/77	ENG. L. H. J.
5/20/77	PROD. ENG. L. H. J.
5/20/77	REGULATOR

DATE	SIGNATURES
5/20/77	CHK'D. B. J. J.
5/20/77	ENG. L. H. J.
5/20/77	PROD. ENG. L. H. J.
5/20/77	REGULATOR









LINE ITEM
DOCUMENT NO.

PART NO.

DESCRIPTION

QTY
REFERENCE DESIGNATORS

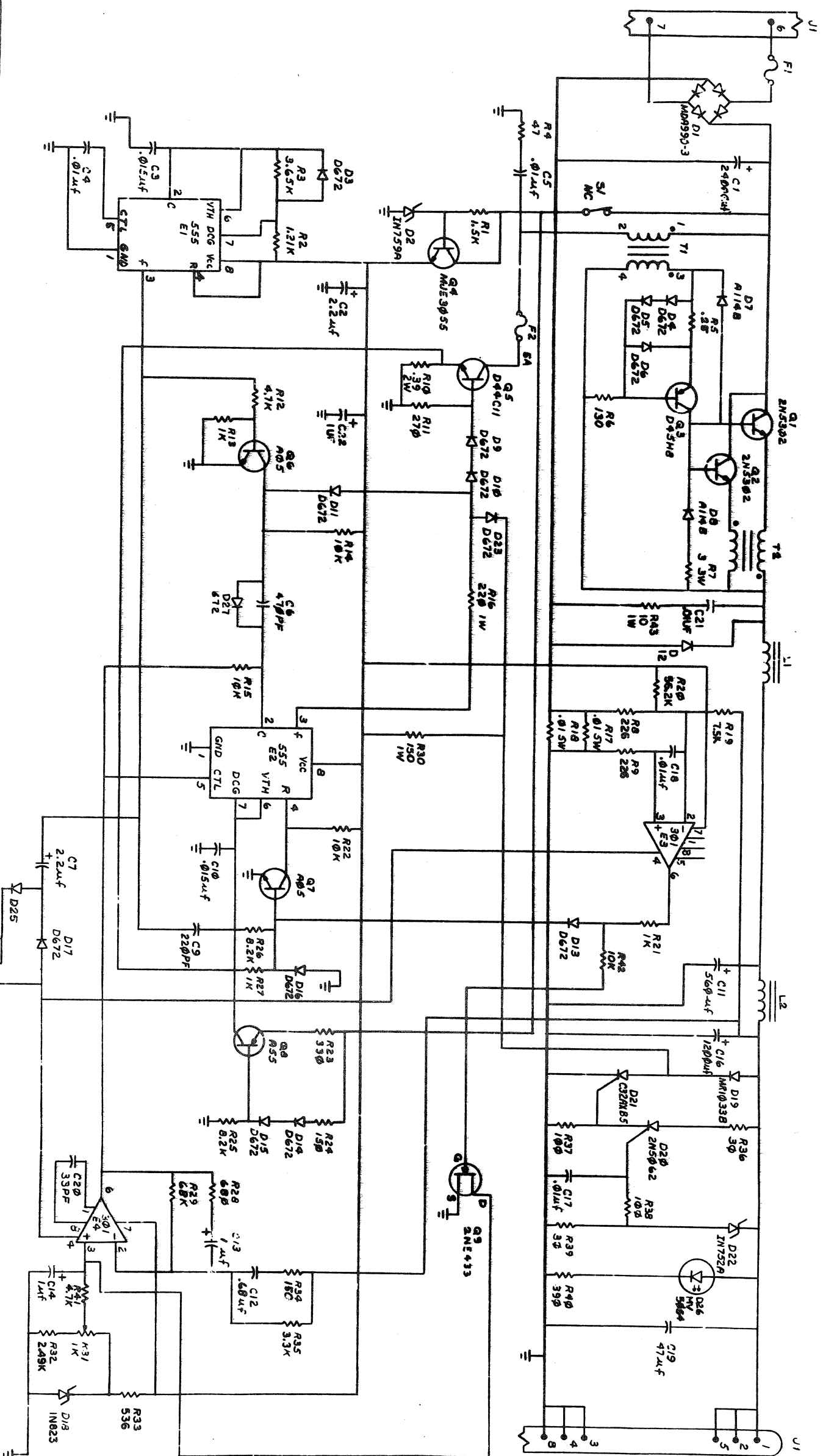
30	30	1213071-02	INSULATOR,RUBBER SILICONE SM	3	
31	31	1212787-00	THERMOSTAT,02212,C0182,NC	1	S1
32	32	1210737-02	HEAT SINK,REGULATOR	1	
33	33	1213071-06	INSULATOR,RUBBER SILICONE	1	
34	34	1312626-00	2.49 K 1/4W 1% RN55D-F 100PPH	1	R32
35	35	1300229-00	100 1/4W 5% CC	2	R37,R38
36	36	1300250-00	150 1/4W 5% CC	2	R24,R34
37	37	1305322-00	7.5 K 1/4W 5% RN55D-F 100PPH	1	R19
38	38	1300295-00	330 1/4W 5% CC	1	R23
39	39	1301424-00	680 1/4W 5% CC	1	R28
40	40	1301327-00	3.3 K 1/4W 5% CC	1	R29
41	41	1300439-00	.25 3W 1% CC	1	R35
42	42	1310219-00	130 1W 5% CC	1	R5
43	43	1300248-00	226 1/4W 1% RN55D-F 100PPH	1	R6
44	44	1302644-00	220 1W 10% CC	2	R8,R9
45	45	1300277-00	390 1/4W 5% CC	1	R16
46	46	1300309-00	536 1/4W 1% RN55D-F 100PPH	1	R40
47	47	1312922-00	1 1/4W 5% CC	1	R33
48	48	1300365-00	1.5 K 1/2W 5% CC	3	R13,R21,R27
49	49	1300394-00	4.7 K 1/4W 5% CC	1	R1
50	50	1300447-00	10 1/4W 5% CC	2	R12,R41
51	51	1300479-00	47 1/2W 5% CC	4	R14,R15,R22,R42
52	52	1301695-00	270 56.2 K 1/4W 1% RN55D-F 100PPH	1	R4
53	53	1301972-00	30 1/4W 5% CC	1	R11
54	54	1312747-00	1.21 K 1/4W 1% RN55D-F 100PPH	1	R20
55	55	1302751-00	8.2 K 1/4W 5% CC	2	R36,R39
56	56	1302871-00	3.65 K 1/4W 1% RN55D-F 100PPH	1	R2
57	57	1303179-00	1 3/4W10% POT 100PPH	2	R25,R26
58	58	1305337-00	.39 2W 5% CC	1	R3
59	59	1309143-07	.01 5W 3% CC	1	R31
60	60	1310868-00	150 1W 10% CC	1	R10
61	61	1313712-00	3 3W 5% CC	2	R17,R18
62	62	1312682-00	10 1W 5% CC	1	R7
63	63	1300256-00	2N 5302/HSNPN 200MC SI 60 40 M	1	R30
64	64	1300171-00	MJE3055 NPN 90MC SI 60 20 Y	1	R43
65	65	1510196-00	XA 05 NPN 500MW SI 60 50 P	2	Q1,Q2
66	66	1510555-00	XA 55 PNP 500MW SI 60 50 P	1	Q4
67	67	1510705-00	D 45H8 PNP 50WT SI 60 60 Y	2	Q6,Q7
68	68	1510706-00	C32AX135 SCRE100V I-25A	1	Q8
69	69	1510708-00	D 44C11 NPN 30W SI 80 40	1	Q3
70	70	1510928-00	DECS433 FET N 350MW 10 25 1A 20U	1	D21
71	71	1512790-00	50 UH 30A	1	Q5
72	72	1511686-00	PULSE XFMR,RATIO 4:1	1	Q9
73	73	1612584-00	CHOKE, 5 UH 32A	1	L1
74	74	1612592-00	2 UH 20A	1	T1
75	75	1613713-00	301AN OP AMP	1	L2
76	76	1613714-00		1	T2
77	77	1910282-00		2	E3,E4

ITEM	TITLE	PARTS LIST	SIZE/CODE	DOCUMENT NUMBER	REV
DIGITAL EQUIPMENT CORPORATION		+5V 32 AMP REGULATOR			
MAYNARD, MASSACHUSETTS			K PL	5412441-0-0	J

LINE ITEM	DOCUMENT NO.	PART NO.	DESCRIPTION	QTY	REFERENCE DESIGNATORS
78		1911944-00	555CN TIMER,FUNCT.BLOCK	2	E1,E2
79		7013274-00	JUMPER CAP TRANS	1	
80		7013274-01	JUMPER CAP TRANS	1	
81		7414765-00	HEATSINK	1	
82		9006633-00	WASHER,LOCK,INT,.2800D X .146ID X .018 THK	3	
83		9008172-00	WASHER, FLAT,SS .250 OD X .125 ID X .022 T	3	
84		9006660-00	WASHER, FLAT, .375 O.D. X .187 I.D. X .036	2	
85		9006653-00	WASHER, FLAT, .375 O.D. X .156 I.D. X .036	1	
86		9008082-00	WASHER, FLAT, FIBER OD: 1/2	2	
87		9007927-00	TERM RING 1POS INSULATED,16-14AWG,ROLL	2	
88		9006037-03	SCREW,TRUS,PHIL, 8-32X 3/8 SS/PAS	2	
89		9006557-00	NUT,KEP , 4-40X 1/4 AF	1	
90		9006563-00	NUT,KEP , 8-32 X11/32AF	2	
91		9007203-00	CLIP, FUSE, WITH STOP, SCREW MOUNTED	2	
92		9007226-00	FUSE, REG BLOW, 15.000A, 32V, GLASS	2	
93		9008268-00	COMPOUND, THERMAL JOINT	1	F1
94		9006012-01	SCREW,PAN ,PHIL, 4-40X 7/16 SS/PAS	A/R	
95		9009000-00	EYELET, ROLLED FLANGE, .121 OD X .156 LG	2	
96		9009769-00	WASHER, RECTANGULAR .405X.225X.060	4	
97		9006021-01	SCREW,PAN ,PHIL, 6-32X 5/16 SS/PAS	1	
98		9007660-00	SPACER, FIBER, RND, 4-40, .250 X .500 LG	2	
99		9007801-00	WASHER, LOCK, S.S. #6	1	
100		9008957-00	NUT,HEX , 6-32X 1/4 AF X 3/32 THK SS	7	
101		9007793-01	SCREW,PAN ,PHIL, 6-32X 9/16 SS/PAS	7	
102		9006010-01	SCREW,PAN ,PHIL, 4-40X 5/16 SS/PAS	8	
103		9107360-99	WIRE,STRND,16AWG,IPVC UL1429 (91-00 A/R	1	
104		9107370-00	WIRE,STRND,14AWG,IPVC UL1534 (91-00 A/R	A/R	

TITLE		PARTS LIST		SIZE	CODE	DOCUMENT NUMBER	REV
DIGITAL EQUIPMENT CORPORATION		+5V 32 AMP REGULATOR					
MAYNARD, MASSACHUSETTS				K	PL	5412441-0-0	J

THIS DRAWING AND SPECIFICATIONS, HEREIN, ARE THE PROPERTY OF THE UNITED STATES GOVERNMENT AND ARE NOT TO BE REPRODUCED OR TRANSMITTED IN ANY FORM OR BY ANY MEANS, ELECTRONIC OR MECHANICAL, INCLUDING PHOTOCOPYING, RECORDING, OR BY ANY INFORMATION STORAGE AND RETRIEVAL SYSTEM, WITHOUT PERMISSION IN WRITING FROM THE ASSISTANT SECRETARY OF THE ARMY, (ASST SEC ARMY), WASHINGTON, D.C. 20315-0001.



REV	DESCRIPTION	DATE
1	541241-00001 A	21 DEC 76
2	541241-00002 B	13 JAN 77
3	541241-00003 C	13 APR 77
4	541241-00004 D	13 APR 77
5	541241-00005 E	13 APR 77
6	541241-00006 F	13 APR 77
7	541241-00007 G	13 APR 77
8	541241-00008 H	13 APR 77
9	541241-00009 I	13 APR 77
10	541241-00010 J	13 APR 77

DRN	7-27-76	FINISH (000000)	H7441	50-08-00
ENG	1-1-76	2-2-76		
PROJ ENG	1-1-76	2-2-76		
PROD	1-1-76	2-2-76		
NEXT HIGHER AUTH.				
SCALE	1 OF 1			
SHEET				
SIZE	CS	541241-0-1		
DIST.				