

"THE MATERIAL HEREIN IS FOR INFORMATION PURPOSES ONLY AND IS SUBJECT TO CHANGE WITHOUT NOTICE. DIGITAL EQUIPMENT CORPORATION ASSUMES NO RESPONSIBILITY FOR ANY ERRORS WHICH MAY APPEAR HEREIN."

# FIELD MAINTENANCE PRINT SET

"THIS DRAWING AND SPECIFICATIONS, HEREIN, ARE THE PROPERTY OF DIGITAL EQUIPMENT CORPORATION AND SHALL NOT BE REPRODUCED OR COPIED OR USED IN WHOLE OR IN PART AS THE BASIS FOR THE MANUFACTURE OR SALE OF ITEMS WITHOUT WRITTEN PERMISSION. COPYRIGHT © 1976, DIGITAL EQUIPMENT CORPORATION."

## TABLE OF CONTENTS

- B-TC-1134A-0-1
- E-UA-1134A-0-0
- C-PL-1134A-0-0
- B-DD-1134A-0-0
- MP00192
- D-CS-M9301-0-1
- D-CS-M9302-0-1
- MP00017
- MP00015
- MP00106
- B-CS-M7850-0-1
- B-CS-G727-0-1
- MP00021
- MP00032
- MP00317
- B-DD-DD11-P
- MP00018
- E-UA-BALL-K-0
- A-PL-BALL-K-0
- B-DD-BALL-K
- MP00270
- C-IA-7011413-0-0
- C-IA-7011411-0-0
- D-IA-7011992-0-0
- A-PL-1134A-0-4
- D-CS-M9312-0-1

UNIT VARIATIONS COVERED BY THIS PRINT SET	115V	230V
1134A-DC		1134A-DD
1134A-HC		1134A-HD
1134A-IC		1134A-LD
1134A-MC		1134A-MD
1134A-JC		1134A-JD
5.25 Box		
1134A-DH		1134A-DJ
1134A-HH		1134A-HJ
1134A-LH		1134A-LJ
1134A-MH		1134A-MJ
1134A-DE		1134A-DF
1134A-HE		1134A-HF
1134A-IE		1134A-IF
1134A-ME		1134A-MF
1134A-JH		1134A-JJ
1134A-JE		1134A-JF
10.5 Box		

**1134A**  
**Field Maintenance**  
**Print Set**

**Digital Equipment**  
**Corporation**

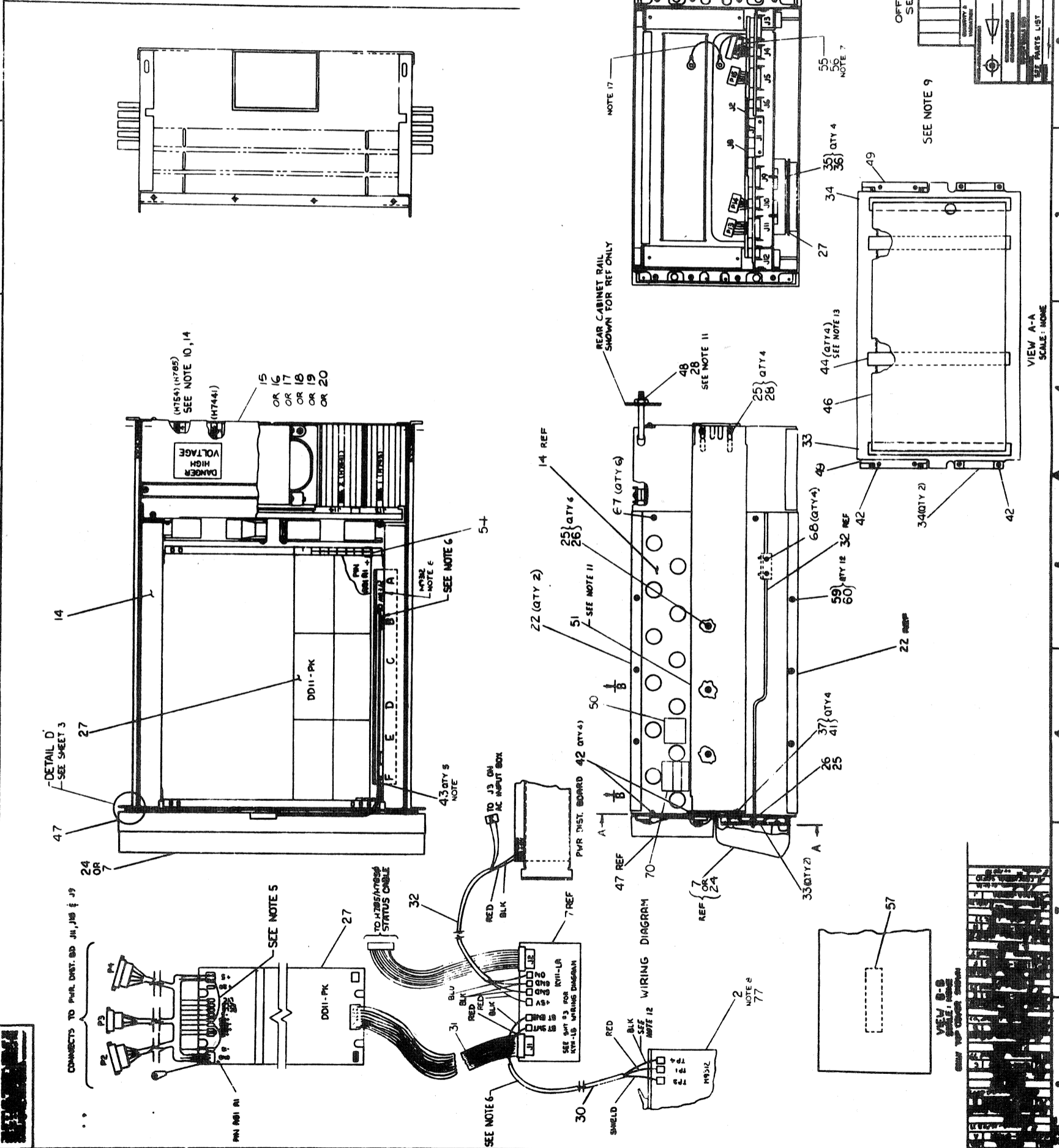
PRINT SET ORDER NO.  
MP00190

REV.	CHG. NO.	DATE	USED ON OPTION/MODEL	DRN.	DATE	TITLE:
A	1134A-7	2-77		D. HEALY	NOV 76	1134A FIELD MAINTENANCE PRINT SET
B	1134A-8	2-78		CHK'D	DATE	
				D. HEALY	NOV 76	
				PROJ. ENG.	DATE	
				DAVE MOBELEY	15 JAN 77	
				FIELD SERV.	DATE	
				ROY M EVANS	13 JAN 77	
REVISIONS			SIZE	CODE	NUMBER	REV.
			B	TC	1134A-0-1	0
			SHEET 1 OF 1		DIST.	

digital

**NOTES:**

- CAUTION: OFF SHEET PARTS LIST EXISTS SEE C-PL-1134A-8-6
- SEE DDII-P MODULE UTILIZATION DRAWING FOR MODULE PLACEMENT INFORMATION.
- FOR ADDITIONAL INFORMATION REFER TO E-UR-BAI-K-8
- TIGHTEN ALL SYSTEM UNIT MOUNTING SCREWS TO 13 IN LBS WITH A TORQUE SCREW DRIVER.
- WHEN THE DDII-PK IS USED WITH A BATTERY EXPANSION BOX WITHOUT BATTERY BACK UP (IE NO 785 OR 7850), INSTALL THE THREE JUMPERS SHOWN:
  - A1-15 TO -15B
  - B1-15 TO -15B
  - C1-15 TO -15B (SEE NOTE 4)
 THIS WILL PROVIDE POWER TO THE MOS MEMORY VOLTAGE RAILS.
- LOOP THE MOS IC ORACLE ITEM #20 UNDER THE CABLE HOLD DOWN BAR (SERVICE LOOP)
- THE DOWN PIE, PART OF ITEM #14, WITH TWO THE WIRMS (ITEM #55 WHEN HTB-4 IS NOT USED.
- EITHER MOSIC OR M312 MAY BE USED BUT NOT BOTH.
- CUT OUT IN FILTER ITEM #46 FOR ROUTING OF CABLES ITEM #32 & 30.
- HTB4 REGULATOR AVAILABLE ONLY IN CORE MEMORY SYSTEMS.
- ITEMS 30, 35, 48 & 51 ARE UNLABLED AT A AND T.
- IN PDP-11 SYSTEMS WITHOUT BATTERY BACKUP (OPTION HTB5) THE TPA CONNECTION TO THE MOSIC WILL CAUSE BOOTS ON ALL POWER RESTARTS. IF BOOTS ON POWER RESTARTS ARE NOT DESIRED, REMOVE THE TPA CONNECTION, INSULATE THE CABLE TERMINAL AND TIE IT BACK ON ITSELF WITH A TIE WRAP.
- REPLACE FOAM STRIPS WITH ITEM 44.
- THE HTB5 IS USED FOR BATTERY BACKUP OF MOS MEMORY ONLY. IF THE HTB5 IS INSTALLED, REMOVE NOTE 8 JUMPERS AND ADD ITEM #30 FROM THE HTB5 POWER SUPPLY.
- SEE C-PL-1134A-8-6
- BAI-K'S THAT USE THE 2400MA-1A-1 POWER DISTRIBUTION (IE, HTB4, HTB5 WITH PPI-1) AND SOME 1100'S) AND HAVE ONE 2011-C (OR AN ADDITIONAL 2011-D) CAN ONLY HAVE THE #2 TO #8 JUMPER IN ONE OF THE BACK PANELS. IN THE OTHER BACK PANELS THE JUMPER IS UNLABLED. TYPICALLY THE JUMPER IS IN THE FIRST BACK PANEL BUT IT MAY BE PLACED IN ONE OF THE OTHER BACK PANELS IF DESIRED. REMOVE THE JUMPER FROM THE JUMPER RING AND THE JAN W/YELLOW TRACE CHASSIS STANDOFF AND THE OTHER TERMINAL TO THE ST. D ON THE AC INPUT ASSY. GND THE AC INPUT ASSY TO THE STUD ON THE HTB5 P5.



10 1/2" BOX (BAI-K)  
 OFF SHEET PARTS LIST EXISTS  
 SEE C-PL-1134A-8-6

UNIT ASSY  
 1134A

ITEM	DESCRIPTION	QTY
1	...	...
2	...	...
3	...	...
4	...	...
5	...	...
6	...	...
7	...	...
8	...	...
9	...	...
10	...	...
11	...	...
12	...	...
13	...	...
14	...	...
15	...	...
16	...	...
17	...	...
18	...	...
19	...	...
20	...	...
21	...	...
22	...	...
23	...	...
24	...	...
25	...	...
26	...	...
27	...	...
28	...	...
29	...	...
30	...	...
31	...	...
32	...	...
33	...	...
34	...	...
35	...	...
36	...	...
37	...	...
38	...	...
39	...	...
40	...	...
41	...	...
42	...	...
43	...	...
44	...	...
45	...	...
46	...	...
47	...	...
48	...	...
49	...	...
50	...	...
51	...	...
52	...	...
53	...	...
54	...	...
55	...	...
56	...	...
57	...	...
58	...	...
59	...	...
60	...	...
61	...	...
62	...	...
63	...	...
64	...	...
65	...	...
66	...	...
67	...	...
68	...	...
69	...	...
70	...	...
71	...	...
72	...	...
73	...	...
74	...	...
75	...	...
76	...	...
77	...	...
78	...	...
79	...	...
80	...	...
81	...	...
82	...	...
83	...	...
84	...	...
85	...	...
86	...	...
87	...	...
88	...	...
89	...	...
90	...	...
91	...	...
92	...	...
93	...	...
94	...	...
95	...	...
96	...	...
97	...	...
98	...	...
99	...	...
100	...	...

VIEW A-A  
 SCALE: NONE

VIEW B-B  
 SCALE: NONE











# DRAWING DIRECTORY

"THIS DRAWING AND SPECIFICATIONS, HEREIN, ARE THE PROPERTY OF DIGITAL EQUIPMENT CORPORATION AND SHALL NOT BE REPRODUCED OR COPIED OR USED IN WHOLE OR IN PART AS THE BASIS FOR THE MANUFACTURE OR SALE OF ITEMS WITHOUT WRITTEN PERMISSION. COPYRIGHT © 1976, DIGITAL EQUIPMENT CORPORATION."

## CUSTOMER PRINT SET INDEX

SEQUENCE 11 11

THIS IS PRINT SET

PRINT SET

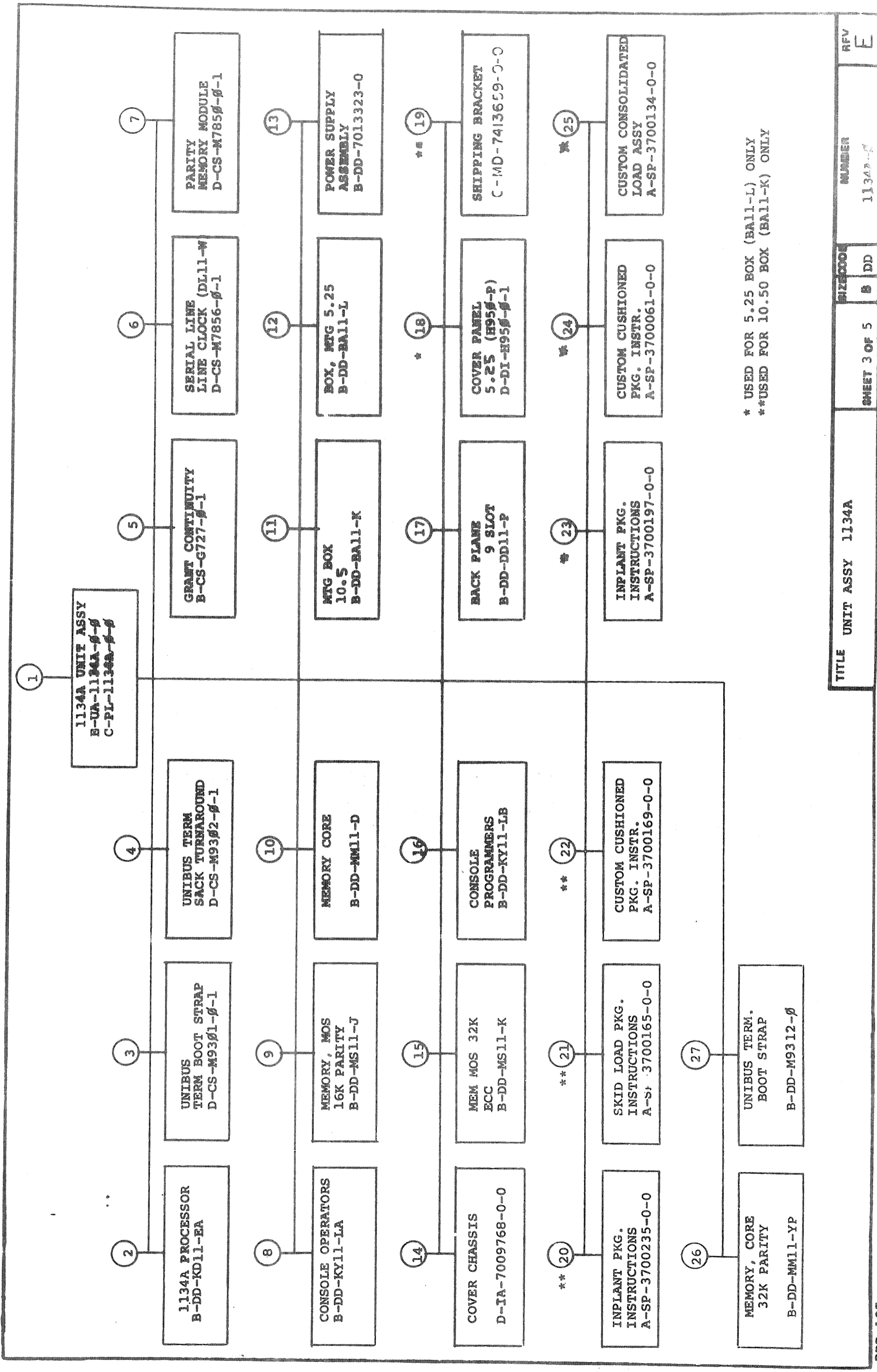
VAR	TITLE	PRINT SET
1134A-ME	1134A-HE & MM11-DP 115V	
1134A-MF	1134A-HF, MM11-DP 23ØV	
1134A-HE	KD11-EA, MM11-DP, BALL-KA, M785Ø	
	M9312, DL11-WA, 115V	
1134A-HF	KD11-FP, MM11-DP, BALL-KA, M785Ø	
	M9312, DL11-WA 23ØV	
1134A-JH	KD11-EA, MM11-YP, BALL-KA, M785Ø, M9312, 115V	
1134A-JJ	KD11-EA, MM11-YP, BALL-KA, M785Ø, M9312, 23ØV	
1134A-JE	1134A-JH & DL11-WA, KY11-LB, 115V	
1134A-JF	1134A-JJ & DL11-WA, KY11-LB, 23ØV	
1134A-JC	KD11-EA, MM11-YP, BALL-LK, M785Ø, M9312, 115V	
1134A-JD	KD11-EA, MM11-YP, BALL-LK, M785Ø, M9312, 23ØV	

5.25" BOX

10.50" BOX

REVISIONS			USED ON OPTION/MODEL	DRN. D. HEALY	DATE NOV 76	TITLE UNIT ASSY 1134A
REV	CHG. NO.	DATE				
				DRN. D. HEALY	NOV 76	UNIT ASSY 1134A
				PROJ ENG. D. HEALY	NOV 76	
				PROJ ENG. D. HEALY	13 JAN 77	
				PROJ. FIELD SERV.	13 JAN 77	

SHEET 2 OF 5



\* USED FOR 5.25 BOX (BALL-L) ONLY  
 \*\*USED FOR 10.50 BOX (BALL-K) ONLY

TITLE	UNIT ASSY 1134A	SHEET 3 OF 5	SIZE CODE	NUMBER	REV
			B DD	1134A-β	E



ITEM NO.	DRAWING NO.	DESCRIPTION	TYPE	FIND NO.	DRAWING NO.	DESCRIPTION	TYPE
17	B-DD-DD11-P	Backplane - 9 Slot for L & K Boxes	M/E				
18	D-DI-H950-P-0 D-UA-H950-P-0	Dwg. Index List H950 Cover 5-1/4 Bezel	M M	24	A-SP-3700061-0-0	Custom Cushioned Pkg. Inatr.	M
19	C-ID-7413659-O-O	Shipping Bracket (BALL-K)	M	25	A-SP-3700134-0-0	Cushion Consolidated Load Assy.	M
20	A-SP-3700235-0-0 A-PS-9905650-0-0 A-PS-9905889-0-0 A-PS-9905644-0-0 A-PS-9905323-0-0 A-PS-9905129-0-0	Implant Pkg. Instructions Regular Slotted Carton Bezel Protector Rear Pad Laminated Saddle Poly Bag	M M M M M M	26	B-DD-MM11-YP	Memory, Core 32K Parity	
21	A-SP-3700165-0-0 A-PS-1210568-01-0 A-PS-9905645-0-0 A-PS-9905419-0-0	Skid Load Pkg. Instructions Cushioned Skid Half Overlap Slotted Carton (Top) Flanged Tube (Bottom)	M M M M	27	B-DD-M9312-0	Unibus Term. Boot Strap	E/M
22	A-SP-3700169-0-0 A-PS-9905645-0-0 A-PS-9905642-0-0 A-PS-9905643-0-0	Cust. Cushioned Pkg. Instructions Full Telescope Foam, Pad Foam/Corrugated Side Wall Assy	M M M M				
23	A-SP-3700197-0-0 A-PS-9905418-0-0 A-PS-9905754-0-0 A-PS-9905755-0-0 A-PS-9905129-0-0 A-PS-9905729-0-0	Implant Pkg. Instructions Regular Slotted Carton Bezel Protector Laminated Saddle Poly Bag Tape	M M M M M M				

digital

TYPE: E ELECTRICAL  
M MECHANICAL  
E/M ELECTRO/MECHANICAL

TITLE UNIT ASSY 1134A  
SHEET 5 OF 5  
SIZE CODE B DD  
NUMBER 11 67 0