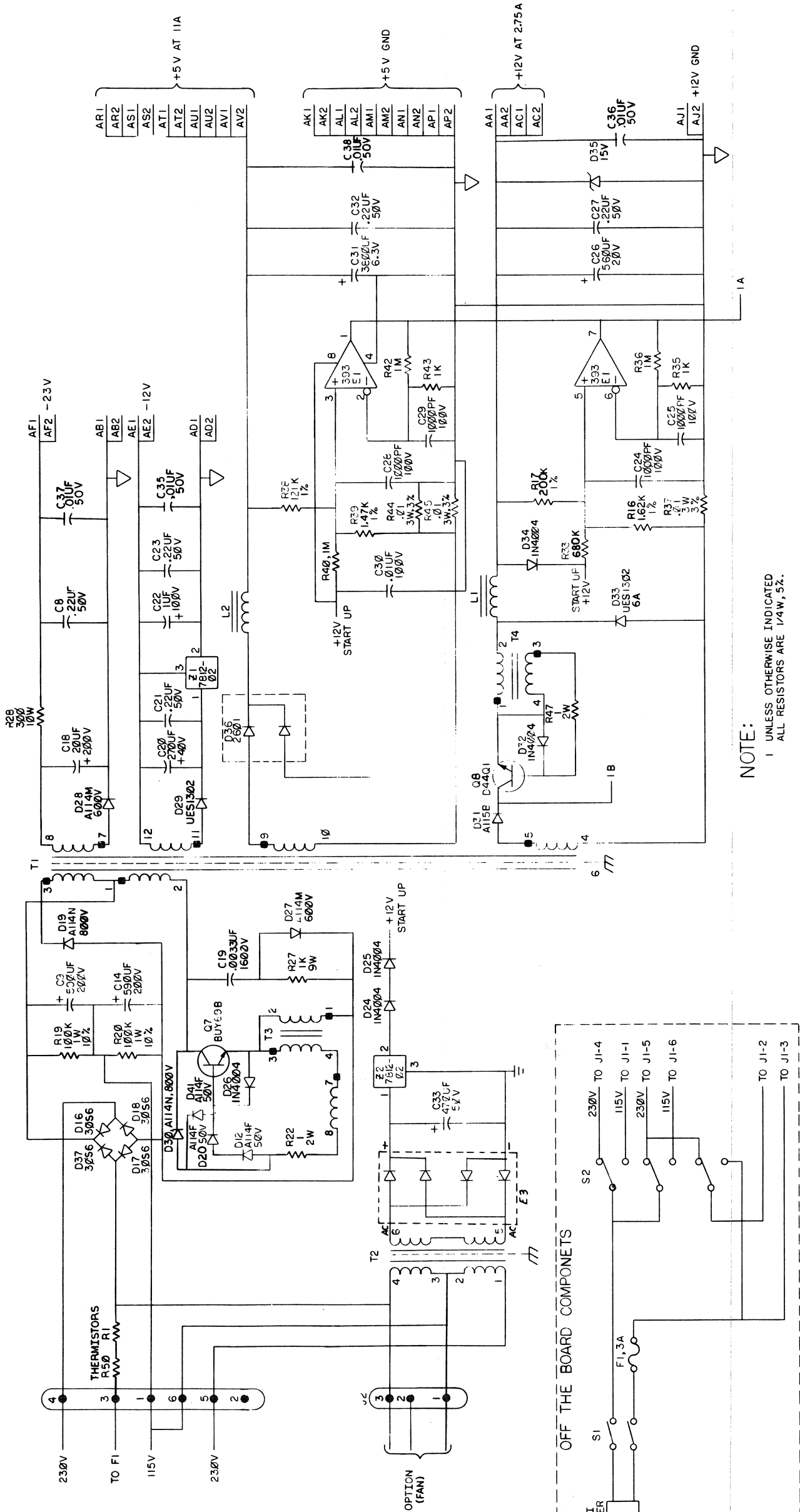


THIS DRAWING AND SPECIFICATIONS HEREIN ARE THE PROPERTY OF ANALOG EQUIPMENT CORPORATION AND SHALL NOT BE REPRODUCED OR COPIED IN WHOLE OR IN PART WITHOUT WRITTEN PERMISSION.
COPYRIGHT © 1977 ANALOG EQUIPMENT CORPORATION



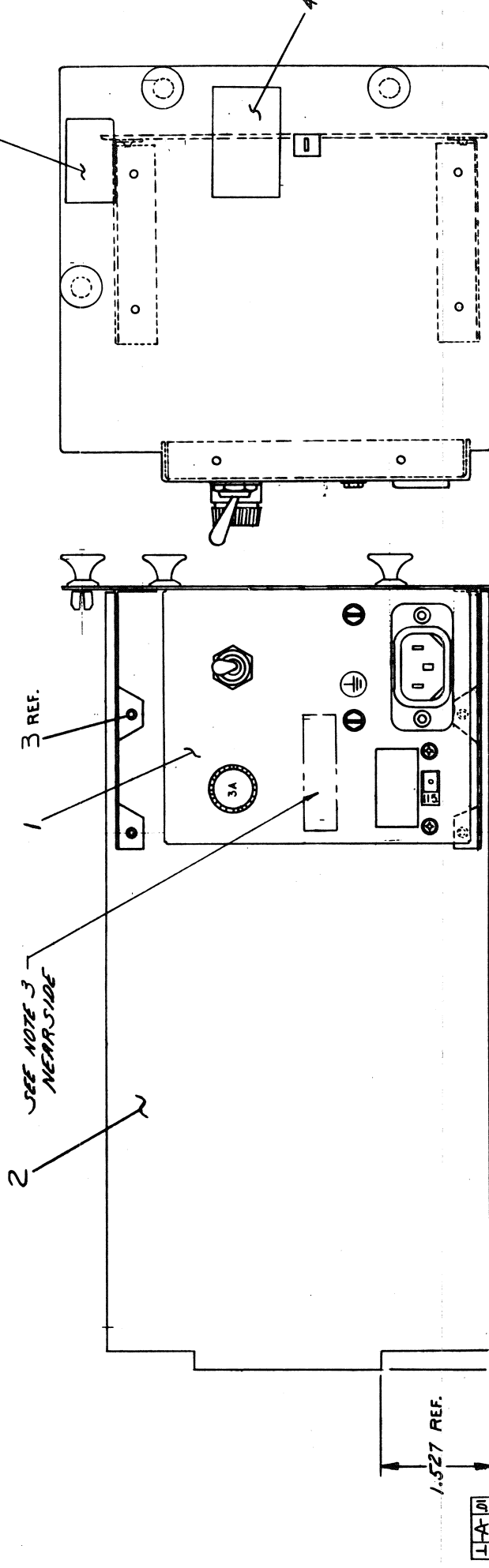
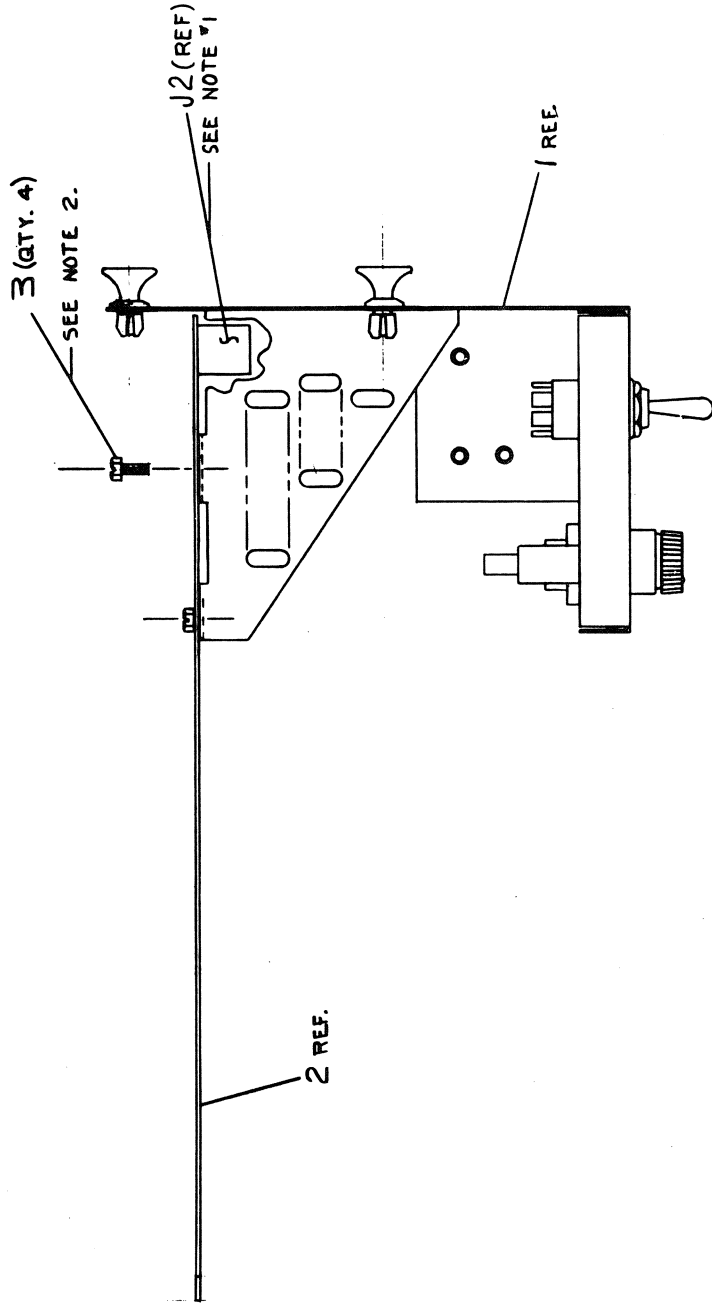
NOTE:
1 UNLESS OTHERWISE INDICATED
ALL RESISTORS ARE 1/4W, 5%.

REVISIONS		CHK	CHANGE NO.	REV.
J. BITTO				
R.F.D. 6 AUG 79				
L. KING				
R.F.D. 6 AUG 79				
J. BITTO				
R.F.D. 23 AUG 79				
J. BITTO				
R.F.D. 27 AUG 79				
J. BITTO				
R.F.D. 27 AUG 79				
E. JAMES				
R.F.D. 30 OCT 79				

DRN. P. 1000	8-4-77	FIRST USED ON	H7831	digital
CHK'D	8-2-78	ENG'R	8-2-78	
PROJ. ENG.	6-7-78	PROD. ENG.	6-7-78	
NEXT HIGHER ASST.				
B-DO-5412996-0				
SCALE	1	OF	2	
SHEET	1	OF	2	
SIZE	D	CODE	CS	5412996-0-1
NUMBER				
REV.				

H7831
POWER SUPPLY

THIS DRAWING AND SPECIFICATIONS, WHEN USED IN CONNECTION WITH THE MATERIALS, EQUIPMENT, AND SUPPLIES, SHALL BE THE PROPERTY OF THE UNITED STATES GOVERNMENT AND SHALL NOT BE REPRODUCED OR TRANSMITTED IN ANY FORM OR BY ANY MEANS, ELECTRONIC OR MECHANICAL, INCLUDING PHOTOCOPYING, RECORDING, OR BY ANY INFORMATION STORAGE AND RETRIEVAL SYSTEM, WITHOUT PERMISSION IN WRITING FROM THE UNITED STATES GOVERNMENT. COPYRIGHT © 1977. "MILITARY STANDARD ORGANIZATION"

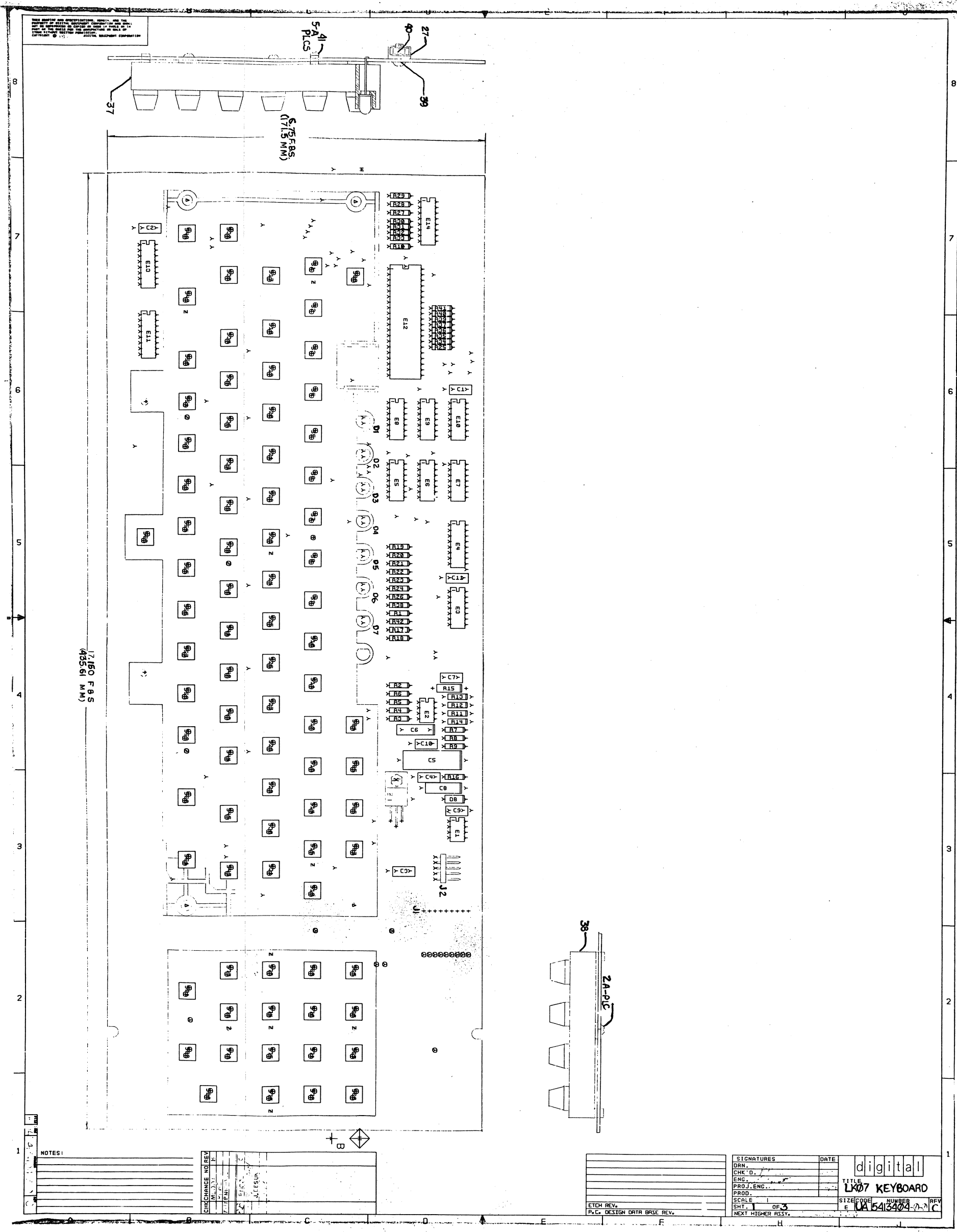


- NOTES:
1. CONNECT PLUG FROM ITEM 1 (7015053-0-0) TO J2 ON ITEM 2 (5412996).
 2. INSTALL ITEM 3 AS SHOWN, TYP.
 3. IDENTIFICATION: STAMP USING 1/8" CHARACTER HEIGHT AS INDICATED BELOW TO HIGHEST LEVEL OF SUBASSEMBLY SPECIFIED ON PURCHASE ORDER AND LOCATE APPROX AS SHOWN ON DRAWING.
A.) PART NUMBER
B.) REVISION
C.) VENDOR IDENTIFICATION.
 4. LOCATE ITEM NO. 4 f5 APPROX AS SHOWN.

QUANTITY & VARIATION		DESCRIPTION		DWG. PART NO.		ITEM NO.	
1		LABEL, SERIAL	3613210-02	5			
1		LABEL, VT100 DANGER	3615869-00	4			
4		SCR. SELF THRD. G32X5/16	9009967-00	3			
1		H7831 POWER SUPPLY	EUA-5412996-0-0	2			
1		EMI FILTER ASSY.	DIA-7015053-0-0	1			

UNLESS OTHERWISE SPECIFIED DIMENSIONS ARE IN INCHES		DIM. D. BOUNDARY		FIRST USED ON		TITLE	
CHKT D. 3/10/77	3/10/77	3/10/77	3/10/77	3/10/77	3/10/77	POWER	SUPPLY ASSY.
ENG. 3/10/77	3/10/77	3/10/77	3/10/77	3/10/77	3/10/77		
PROD. 3/10/77	3/10/77	3/10/77	3/10/77	3/10/77	3/10/77		
NEXT HIGHEN/ASY.		E-LA-VT100-0-0		SCALE 1/1		SHEET 1 OF 1	
MATERIAL		SEE PARTS LIST		FINISH		REV. A	
DO NOT SCALE DWG							
REMOVE BURRS AND							
WELD SHARP CORNERS							
THIRD ANGLE PROJECTION							

REVISIONS		DATE		BY		CHK	
1	7015053-0-0	3/10/77	3/10/77	3/10/77	3/10/77	3/10/77	3/10/77
2	7015053-0-0	3/10/77	3/10/77	3/10/77	3/10/77	3/10/77	3/10/77
3	7015053-0-0	3/10/77	3/10/77	3/10/77	3/10/77	3/10/77	3/10/77
4	7015053-0-0	3/10/77	3/10/77	3/10/77	3/10/77	3/10/77	3/10/77
5	7015053-0-0	3/10/77	3/10/77	3/10/77	3/10/77	3/10/77	3/10/77
6	7015053-0-0	3/10/77	3/10/77	3/10/77	3/10/77	3/10/77	3/10/77
7	7015053-0-0	3/10/77	3/10/77	3/10/77	3/10/77	3/10/77	3/10/77
8	7015053-0-0	3/10/77	3/10/77	3/10/77	3/10/77	3/10/77	3/10/77
9	7015053-0-0	3/10/77	3/10/77	3/10/77	3/10/77	3/10/77	3/10/77
10	7015053-0-0	3/10/77	3/10/77	3/10/77	3/10/77	3/10/77	3/10/77



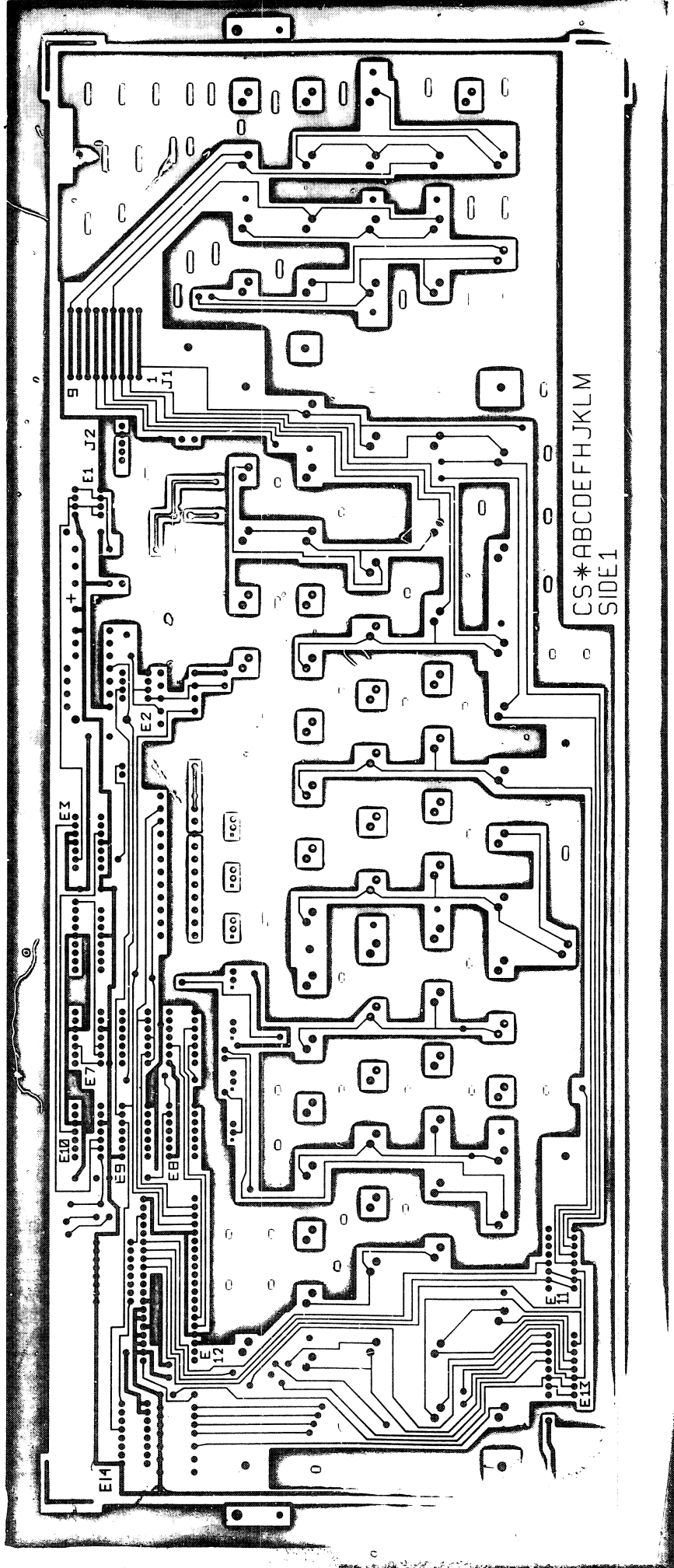
NOTES:		
NO	DATE	DESCRIPTION

CHANGE LOG		
CHANGE NO	REV	DATE

SIGNATURES		DATE
DRN.		
CHK'D.		
ENG.		
PROJ. ENG.		
PROD.		
SCALE		
SMT.		
NEXT HIGHER ASSY.		

digital		
TITLE		
LK07 KEYBOARD		
SIZE	CODE	NUMBER
E		
REV		

5413404
5013403 C-PI L1



UK07 KEYBOARD
2 1 2 3
F UA 5413-010.0 C

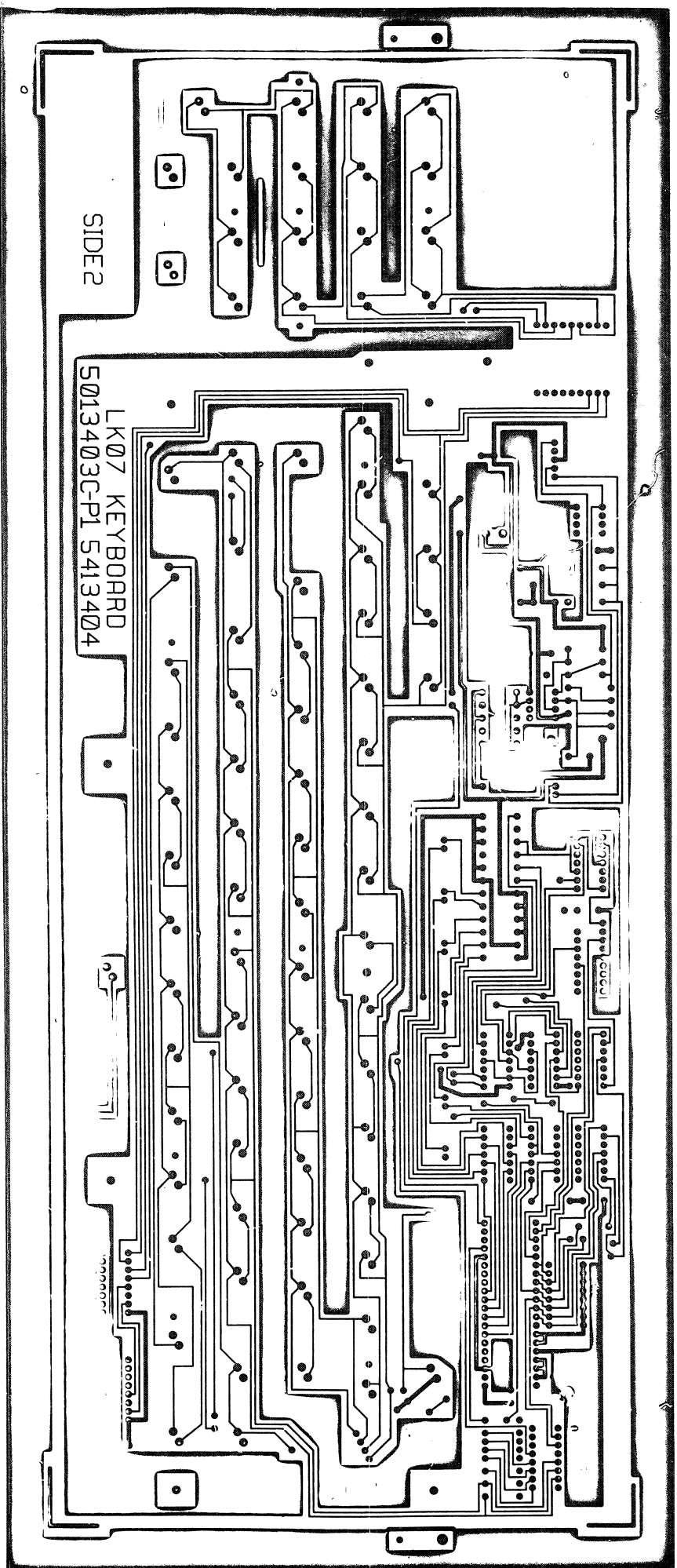
3

4

6

7

8



72



SIDE 2

LK07 KEYBOARD
5013403C-P1 5413404

LK07 KEYBOARD

EUA 5913404C-0

Q

5413404-0-0

1	2	3	4	5	6	7	8	9	10	11	12	13	14	15	16	17	18	19	20	21	22	23	24	25	26	27	28	29
5013403-00	1000011-00	1000075-00	1001634-00	1005306-00	1012784-00	1105275-00	1110324-00	1215048-00	1300309-00	1300315-00	1300365-00	1300439-00	1300479-00	1301401-00	1301425-00	1301874-00	1302391-00	1303155-00	1303187-00	1303312-00	1304833-00	1309412-00	1909686-00	1910406-00	1910741-00	1912536-00	1912649-00	1912799-00
D-MD-5013403-0-0	DRILL & ETCH DRAWING																											
	47.0 MMF 100V 5%200PPM DM15S																											
	25 MFD 25V G% 30D AL EL																											
	1600.0 MMF 100V 5%200PPM DM02S																											
	6.8MFD 35V 10% S.TANT																											
	.047 MFD 50V -20+80 CER																											
	D 672 TR= 15NS PIV= 60V SI																											
	LED 1MCD10MA PIV=3																											
	CONN 5POS RT ANGLE																											
	390 1/4W 5% CC																											
	470 1/2W 5% CC																											
	1 K 1/4W 5% CC																											
	3.3 K 1/4W 5% CC																											
	10 K 1/4W 5% CC																											
	750 1/4W 5% CC																											
	300 1/4W 5% CC																											
	5.6 K 1/4W 5% CC																											
	20 K 1/4W 5% CC																											
	21.5 K 1/4W 1% RN55D-F 100PPM CC																											
	820 K1/4W 5% CC																											
	10.0 K 1/4W 1% RN55D-F 100PPM																											
	1.96 K 1/4W 1% RN55D-F 100PPM																											
	18.2 K 1/4W 1% RN55D-F 100PPM																											
	7404 INVERTER GATE-HEX 11																											
	75451 DRIVER,PERIPH,DUAL,																											
	7406 INVERTER GATE-HEX 11																											
	7805 VOLT.REG.FIX																											
	LS75 LATCH 4BIT,BISTABLE																											
	LS00 NAND-GATE-QUAD 2IN,P																											
	DEC																											
	C7																											
	C5																											
	C6																											
	C8																											
	C1,C2,C4,C9,C10,C11,C3																											
	D8																											
	D1-D7																											
	J2																											
	R16,R42																											
	R15																											
	R10,R19,R21-R24																											
	R26-R33,R38																											
	R2,R3,R17,R25,R34-R37,R39-R41																											
	R1																											
	R18,R20																											
	R5,R7,R9																											
	R4,R6																											
	R12																											
	R8																											
	R11																											
	R14																											
	R13																											
	E9																											
	E1																											
	E8																											
	Z1																											
	E4																											
	E5																											

THIS DRAWING AND SPECIFICATIONS HEREIN, ARE THE PROPERTY OF DIGITAL EQUIPMENT CORPORATION AND SHALL NOT BE REPRODUCED OR COPIED OR USED IN WHOLE OR IN PART AS THE BASIS FOR THE MANUFACTURE OR SALE OF ITEMS WITHOUT WRITTEN PERMISSION.

COPYRIGHT (C) 1979, DIGITAL EQUIPMENT CORPORATION

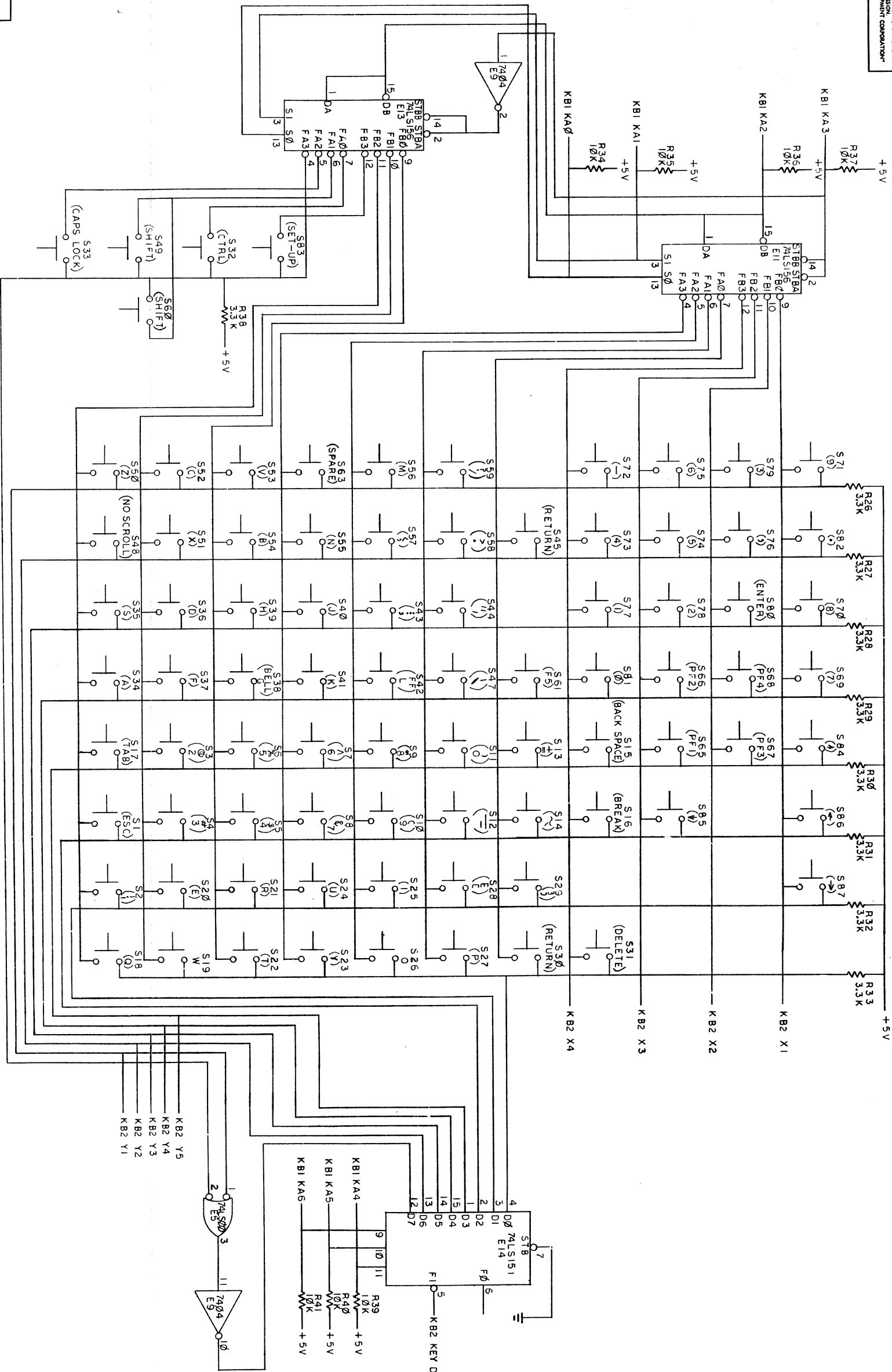
SHEET 63 OF 63

REFERENCE DESIGNATOR

E6
E14
E7,E10
E11,E13
E2
E12

ID	IGIT AL	TITLE	SECTION A OF A	SIZE CODE	DOCUMENT NUMBER	REV
		VT100 FULL KEYBOARD		K PL	5413404-0-1DBP	E

THIS DRAWING AND SPECIFICATIONS, HEREIN, ARE THE PROPERTY OF THE UNITED STATES GOVERNMENT AND ARE NOT TO BE REPRODUCED OR COPIED IN WHOLE OR IN PART WITHOUT THE WRITTEN PERMISSION OF THE COPYRIGHT © 1977 DIGITAL EQUIPMENT CORPORATION



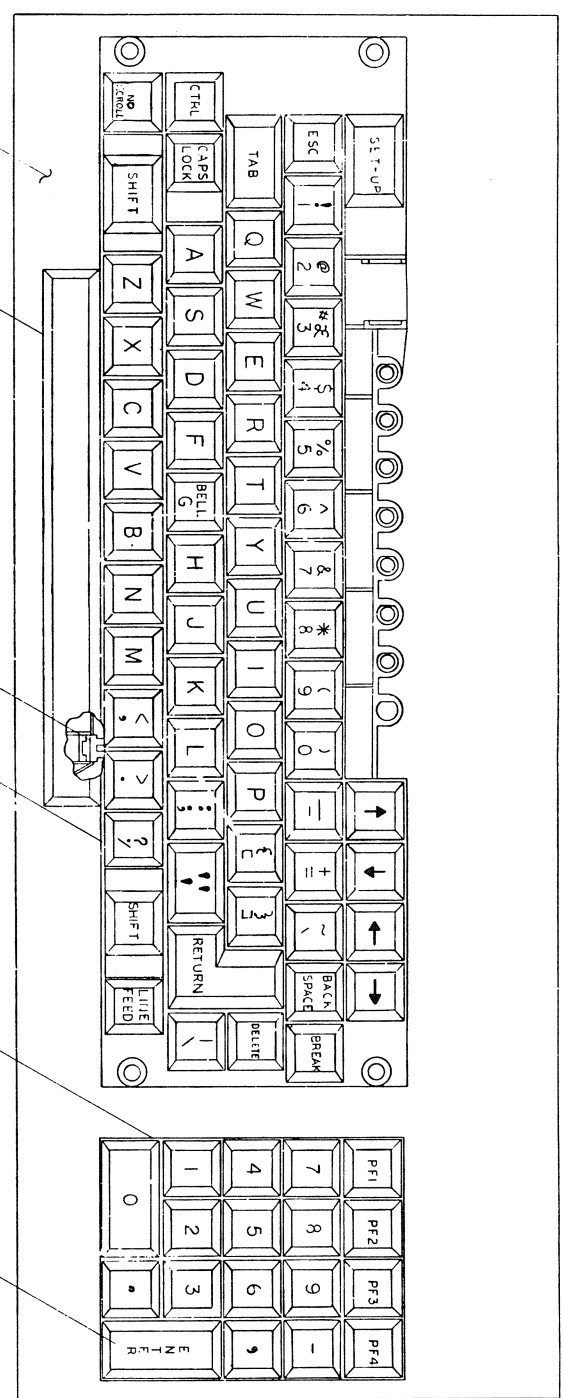
REVISIONS		TITLE		SIZE CODE		NUMBER		REV.	
CHK	CHANGE NO.	REV.	VT100 FULL KEYBOARD (KB2)	DCS5413404-0-1	8	2	OF 3	1	8
SCALE		SHEET		DIST.		1			



REVISIONS		
CHK	CHANGE NO.	REV.


[illegible]

6-13
REF



NUMERIC KEYPAT:
SEE NOTE 1

4 (QTY 83) } REF
5 OR
6 OR
7

THIRD ANGLE PROJECTION		QUANTITY & VARIATION		ITEM NO.		DWG. / PART NO.		ITEM NO.	
									
REMOVE BURRS AND BREAK SHARP CORNERS									
DO NOT SCALE DWG									
MATERIAL SEE PARTS LIST									
FINISH NONE									
UNLESS OTHERWISE SPECIFIED DIMENSIONS ARE IN INCHES									
CLASS OF SURFACE 1.00 0.125 0.063 0.031 0.0156 0.0078 0.0039 0.0019 0.0009 0.0004 0.0002 0.0001		CHECK ONE 1.00 0.125 0.063 0.031 0.0156 0.0078 0.0039 0.0019 0.0009 0.0004 0.0002 0.0001		MEDIUM 1.00 0.125 0.063 0.031 0.0156 0.0078 0.0039 0.0019 0.0009 0.0004 0.0002 0.0001		PREFERRED 1.00 0.125 0.063 0.031 0.0156 0.0078 0.0039 0.0019 0.0009 0.0004 0.0002 0.0001		NOMINAL DIMENSION RANGE INCHES 0.0001 - 0.0004 0.0004 - 0.0009 0.0009 - 0.0019 0.0019 - 0.0039 0.0039 - 0.0078 0.0078 - 0.0156 0.0156 - 0.031 0.031 - 0.063 0.063 - 0.125 0.125 - 0.25 0.25 - 0.5 0.5 - 1.0 1.0 - 2.0 2.0 - 4.0 4.0 - 6.0 6.0 - 10.0 10.0 - 16.0 16.0 - 25.0 25.0 - 40.0 40.0 - 60.0 60.0 - 100.0 100.0 - 160.0 160.0 - 250.0 250.0 - 400.0 400.0 - 600.0 600.0 - 1000.0 1000.0 - 1600.0 1600.0 - 2500.0 2500.0 - 4000.0 4000.0 - 6000.0 6000.0 - 10000.0 10000.0 - 16000.0 16000.0 - 25000.0 25000.0 - 40000.0 40000.0 - 60000.0 60000.0 - 100000.0 100000.0 - 160000.0 160000.0 - 250000.0 250000.0 - 400000.0 400000.0 - 600000.0 600000.0 - 1000000.0 1000000.0 - 1600000.0 1600000.0 - 2500000.0 2500000.0 - 4000000.0 4000000.0 - 6000000.0 6000000.0 - 10000000.0 10000000.0 - 16000000.0 16000000.0 - 25000000.0 25000000.0 - 40000000.0 40000000.0 - 60000000.0 60000000.0 - 100000000.0 100000000.0 - 160000000.0 160000000.0 - 250000000.0 250000000.0 - 400000000.0 400000000.0 - 600000000.0 600000000.0 - 1000000000.0 1000000000.0 - 1600000000.0 1600000000.0 - 2500000000.0 2500000000.0 - 4000000000.0 4000000000.0 - 6000000000.0 6000000000.0 - 10000000000.0 10000000000.0 - 16000000000.0 16000000000.0 - 25000000000.0 25000000000.0 - 40000000000.0 40000000000.0 - 60000000000.0 60000000000.0 - 100000000000.0 100000000000.0 - 160000000000.0 160000000000.0 - 250000000000.0 250000000000.0 - 400000000000.0 400000000000.0 - 600000000000.0 600000000000.0 - 1000000000000.0 1000000000000.0 - 1600000000000.0 1600000000000.0 - 2500000000000.0 2500000000000.0 - 4000000000000.0 4000000000000.0 - 6000000000000.0 6000000000000.0 - 10000000000000.0 10000000000000.0 - 16000000000000.0 16000000000000.0 - 25000000000000.0 25000000000000.0 - 40000000000000.0 40000000000000.0 - 60000000000000.0 60000000000000.0 - 100000000000000.0 100000000000000.0 - 160000000000000.0 160000000000000.0 - 250000000000000.0 250000000000000.0 - 400000000000000.0 400000000000000.0 - 600000000000000.0 600000000000000.0 - 1000000000000000.0 1000000000000000.0 - 1600000000000000.0 1600000000000000.0 - 2500000000000000.0 2500000000000000.0 - 4000000000000000.0 4000000000000000.0 - 6000000000000000.0 6000000000000000.0 - 10000000000000000.0 10000000000000000.0 - 16000000000000000.0 16000000000000000.0 - 25000000000000000.0 25000000000000000.0 - 40000000000000000.0 40000000000000000.0 - 60000000000000000.0 60000000000000000.0 - 100000000000000000.0 100000000000000000.0 - 160000000000000000.0 160000000000000000.0 - 250000000000000000.0 250000000000000000.0 - 400000000000000000.0 400000000000000000.0 - 600000000000000000.0 600000000000000000.0 - 1000000000000000000.0 1000000000000000000.0 - 1600000000000000000.0 1600000000000000000.0 - 2500000000000000000.0 2500000000000000000.0 - 4000000000000000000.0 4000000000000000000.0 - 600000000000000	

OFF SHEET PARTS LIST EXISTS
SEE C-PL-7015265-0-0

THIS DRAWING AND SPECIFICATIONS, HEREIN, ARE THE PROPERTY OF DIGITAL EQUIPMENT CORPORATION. THEY SHALL NOT BE REPRODUCED OR COPIED OR USED IN WHOLE OR IN PART FOR ANY OTHER PROJECT OR DESIGN WITHOUT THE WRITTEN PERMISSION OF DIGITAL EQUIPMENT CORPORATION. COPYRIGHT © 1972

NOTES:
1. THE FOLLOWING TABLE (SHEET 2) LISTS VARIATION NUMBERS FOR 12/4355 (KEYCAPS) INDICATING THE SPECIFIC KEYBOARD POSITION OF EACH AS USED ON VARIOUS MODELS.

1															2					3	4	5	69	70	71	72
6	7	8	9	10	11	12	13	14	15	16	17	18	19	20	21	73	74	75	76							
22	23	24	25	26	27	28	29	30	31	32	33	34	35	36	77	78	79	80								
37	38	39	40	41	42	43	44	45	46	47	48	49	50	51	81	82	83	84								
52	53	54	55	56	57	58	59	60	61	62	63	64	65	85	86											
68	67																									

66

KEYBOARD CAP POSITIONS
(SEE NOTE 1 & TABLE, SHEET 2)

REVISIONS		
CHK	CHANGE NO.	REV.
62	7015765-MU002	A
L. KING		
R. P. King 1-8-79		

THIRD ANGLE PROJECTION		UNLESS OTHERWISE SPECIFIED, ALL DIMENSIONS ARE IN INCHES		DESCRIPTION	CH. / PART NO.	ITEM NO.	
REMOVE BURNS AND BREAK SHARP CORNERS	DO NOT SCALE DWG	MATERIAL	FINISH	ANGLE AS SHOWN	CLASS OF ACCURACY	ANGULAR DIMENSION RANGE INCHES	
PROJ. 1 st ANGLE	PROJ. 2 nd ANGLE	PROJ. 3 rd ANGLE	PROJ. 4 th ANGLE	CHECK ONE	CHECK ONE	CHECK ONE	
DO NOT SCALE DWG	DO NOT SCALE DWG	DO NOT SCALE DWG	DO NOT SCALE DWG	DO NOT SCALE DWG	DO NOT SCALE DWG	DO NOT SCALE DWG	
SIZE CODE	SCALE	NUMBER	REV.	SIZE CODE	SCALE	NUMBER	REV.
D-AD-7015765-0-0	D	AR 7015765-0-1	A	D-AD-7015765-0-0	D	AR 7015765-0-1	A
SHEET	OF 2	DIST.		SHEET	OF 2	DIST.	

