

THIS DRAWING AND SPECIFICATIONS HEREIN ARE THE PROPERTY OF DIGITAL EQUIPMENT CORPORATION AND SHALL NOT BE REPRODUCED OR COPIED OR USED IN WHOLE OR IN PART WITHOUT WRITTEN PERMISSION. COPYRIGHT © 1977 DIGITAL EQUIPMENT CORPORATION

STP CONN
J5

EIA CONN
J4

D

CS 5413009-0-1

REV. N

DATE 10/1/77

BY

CS 5413009-0-1

REV. N

DATE 10/1/77

BY

CS 5413009-0-1

REV. N

DATE 10/1/77

BY

CS 5413009-0-1

REV. N

DATE 10/1/77

BY

CS 5413009-0-1

REV. N

DATE 10/1/77

BY

CS 5413009-0-1

REV. N

DATE 10/1/77

BY

CS 5413009-0-1

REV. N

DATE 10/1/77

BY

CS 5413009-0-1

REV. N

DATE 10/1/77

BY

CS 5413009-0-1

REV. N

DATE 10/1/77

BY

CS 5413009-0-1

REV. N

DATE 10/1/77

BY

CS 5413009-0-1

REV. N

DATE 10/1/77

BY

CS 5413009-0-1

REV. N

DATE 10/1/77

BY

CS 5413009-0-1

REV. N

DATE 10/1/77

BY

CS 5413009-0-1

REV. N

DATE 10/1/77

BY

CS 5413009-0-1

REV. N

DATE 10/1/77

BY

CS 5413009-0-1

REV. N

DATE 10/1/77

BY

CS 5413009-0-1

REV. N

DATE 10/1/77

BY

CS 5413009-0-1

REV. N

DATE 10/1/77

BY

CS 5413009-0-1

REV. N

DATE 10/1/77

BY

CS 5413009-0-1

REV. N

DATE 10/1/77

BY

CS 5413009-0-1

REV. N

DATE 10/1/77

BY

CS 5413009-0-1

REV. N

DATE 10/1/77

BY

CS 5413009-0-1

REV. N

DATE 10/1/77

BY

CS 5413009-0-1

REV. N

DATE 10/1/77

BY

CS 5413009-0-1

REV. N

DATE 10/1/77

BY

CS 5413009-0-1

REV. N

DATE 10/1/77

BY

CS 5413009-0-1

REV. N

DATE 10/1/77

BY

CS 5413009-0-1

REV. N

DATE 10/1/77

BY

CS 5413009-0-1

REV. N

DATE 10/1/77

BY

CS 5413009-0-1

REV. N

DATE 10/1/77

BY

CS 5413009-0-1

REV. N

DATE 10/1/77

BY

CS 5413009-0-1

REV. N

DATE 10/1/77

BY

CS 5413009-0-1

REV. N

DATE 10/1/77

BY

CS 5413009-0-1

REV. N

DATE 10/1/77

BY

CS 5413009-0-1

REV. N

DATE 10/1/77

BY

CS 5413009-0-1

REV. N

DATE 10/1/77

BY

CS 5413009-0-1

REV. N

DATE 10/1/77

BY

CS 5413009-0-1

REV. N

DATE 10/1/77

BY

CS 5413009-0-1

REV. N

DATE 10/1/77

BY

CS 5413009-0-1

REV. N

DATE 10/1/77

BY

CS 5413009-0-1

REV. N

DATE 10/1/77

BY

CS 5413009-0-1

REV. N

DATE 10/1/77

BY

CS 5413009-0-1

REV. N

DATE 10/1/77

BY

CS 5413009-0-1

REV. N

DATE 10/1/77

BY

CS 5413009-0-1

REV. N

DATE 10/1/77

BY

CS 5413009-0-1

REV. N

DATE 10/1/77

BY

CS 5413009-0-1

REV. N

DATE 10/1/77

BY

CS 5413009-0-1

REV. N

DATE 10/1/77

BY

CS 5413009-0-1

REV. N

DATE 10/1/77

BY

CS 5413009-0-1

REV. N

DATE 10/1/77

BY

CS 5413009-0-1

REV. N

DATE 10/1/77

BY

CS 5413009-0-1

REV. N

DATE 10/1/77

BY

CS 5413009-0-1

REV. N

DATE 10/1/77

BY

CS 5413009-0-1

REV. N

DATE 10/1/77

BY

CS 5413009-0-1

REV. N

DATE 10/1/77

BY

CS 5413009-0-1

REV. N

DATE 10/1/77

BY

CS 5413009-0-1

REV. N

DATE 10/1/77

BY

CS 5413009-0-1

REV. N

DATE 10/1/77

BY

CS 5413009-0-1

REV. N

DATE 10/1/77

BY

CS 5413009-0-1

REV. N

DATE 10/1/77

BY

CS 5413009-0-1

REV. N

DATE 10/1/77

BY

CS 5413009-0-1

REV. N

DATE 10/1/77

BY

CS 5413009-0-1

REV. N

DATE 10/1/77

BY

CS 5413009-0-1

REV. N

DATE 10/1/77

BY

CS 5413009-0-1

REV. N

DATE 10/1/77

BY

CS 5413009-0-1

REV. N

DATE 10/1/77

BY

CS 5413009-0-1

REV. N

DATE 10/1/77

BY

CS 5413009-0-1

REV. N

DATE 10/1/77

BY

CS 5413009-0-1

REV. N

DATE 10/1/77

BY

CS 5413009-0-1

REV. N

DATE 10/1/77

BY

CS 5413009-0-1

REV. N

DATE 10/1/77

BY

CS 5413009-0-1

REV. N

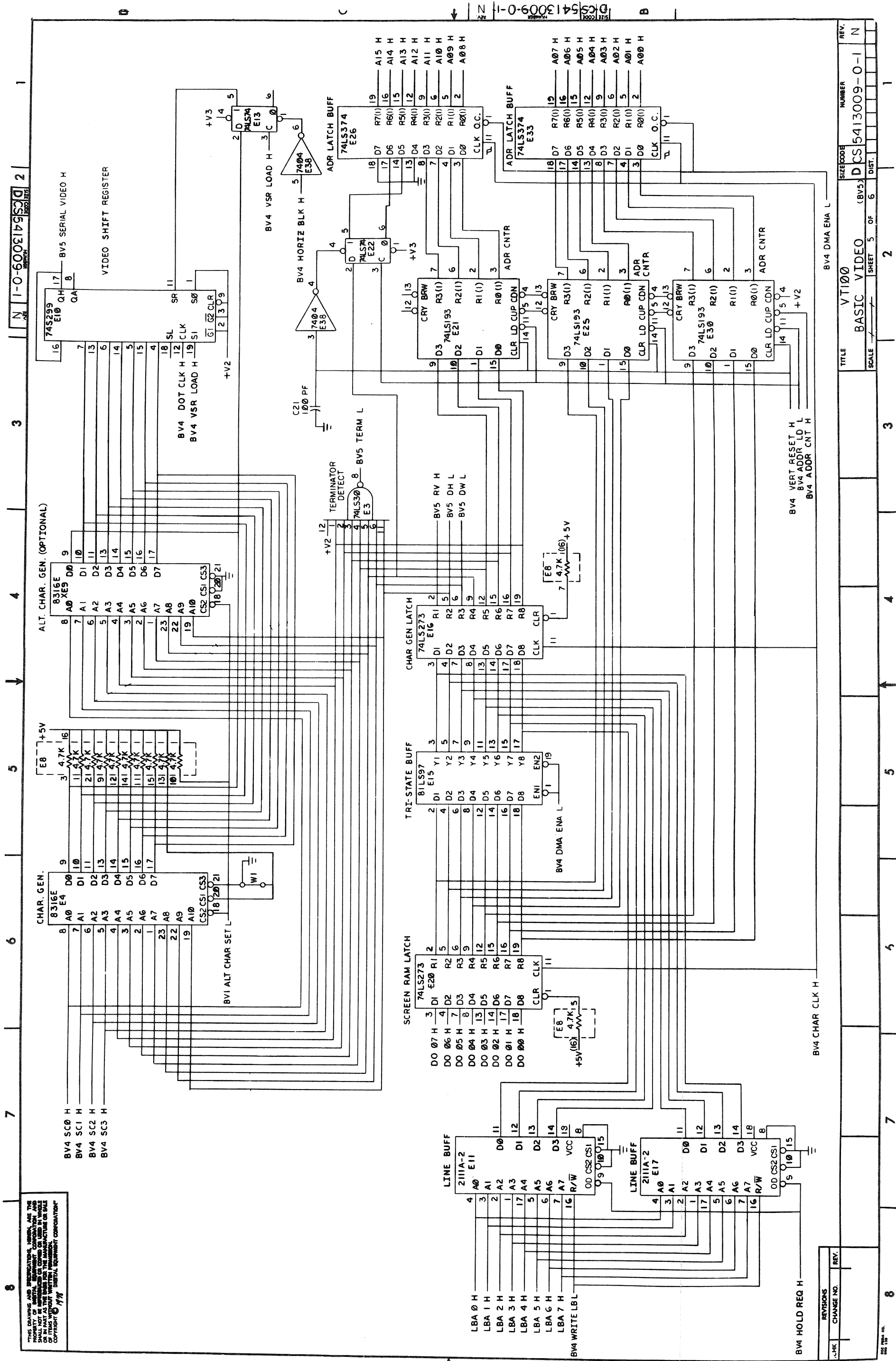
DATE 10/1/77

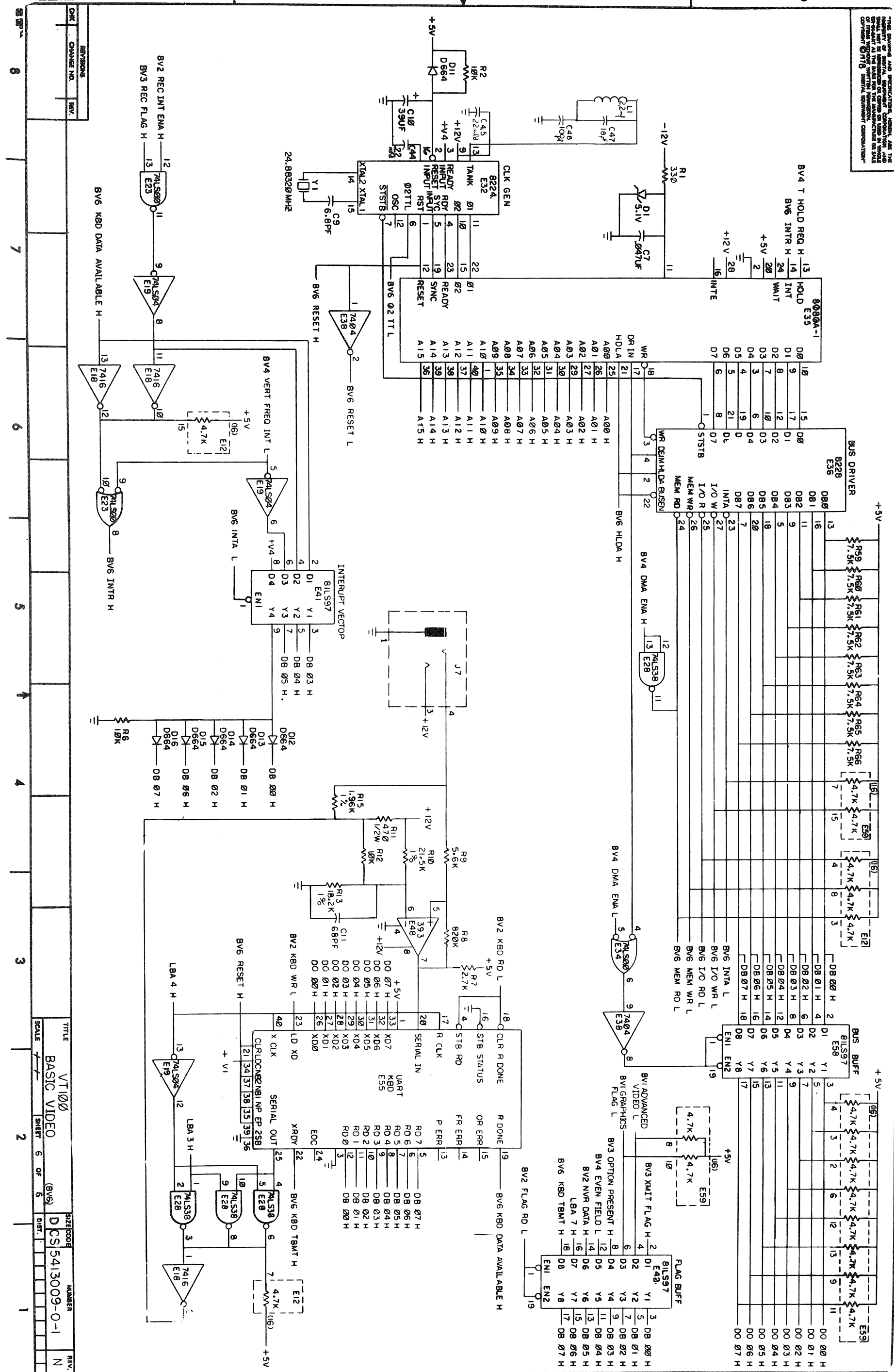
BY

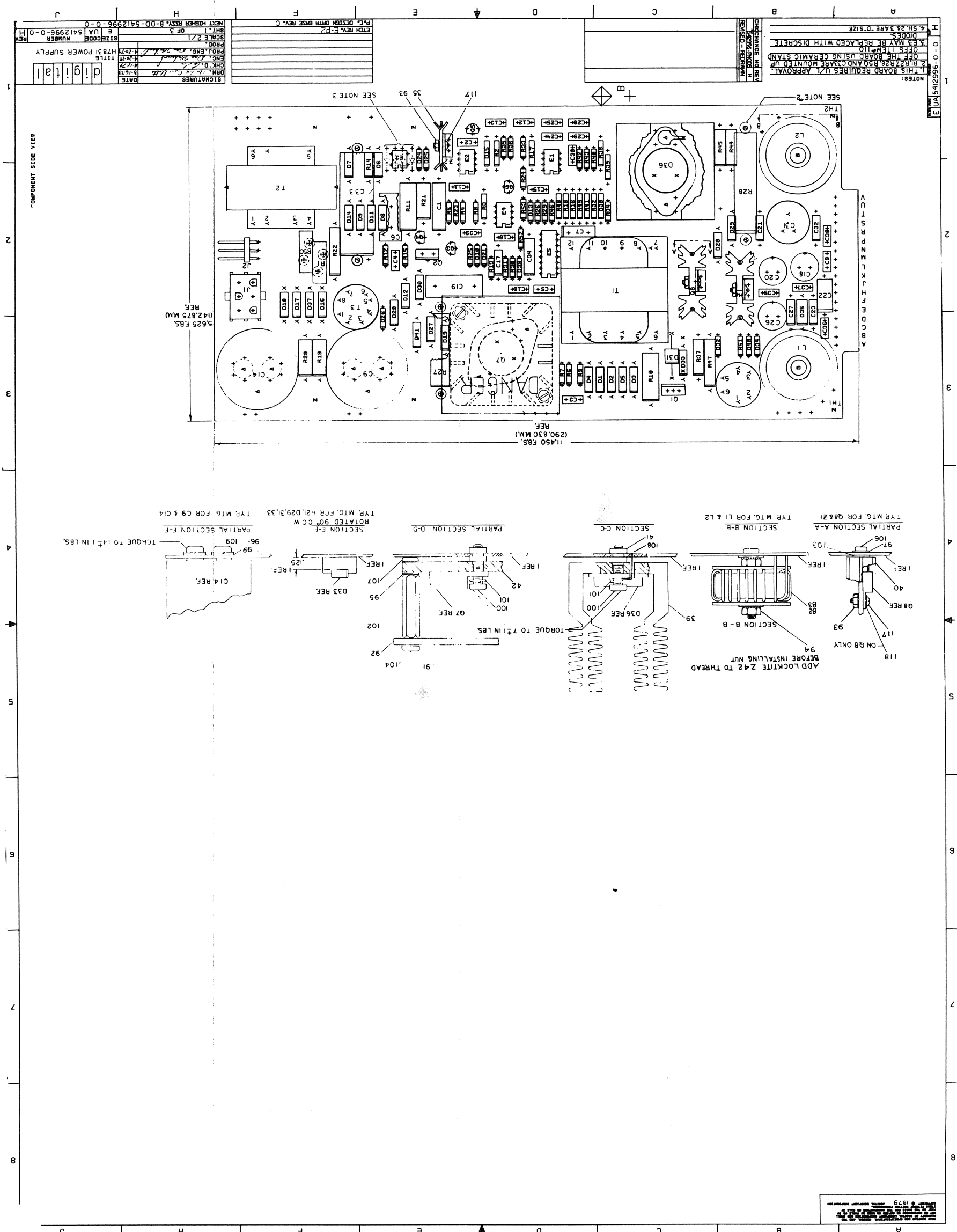
CS 5413009-0-1

REV. N

DATE 10/1/77







YJQUS R3W09 TV46
SQ-32E8T02 deest42

1

□

1 2 3 4 5 6 7 8

DUA 5412996-0-0 H

2

3

4

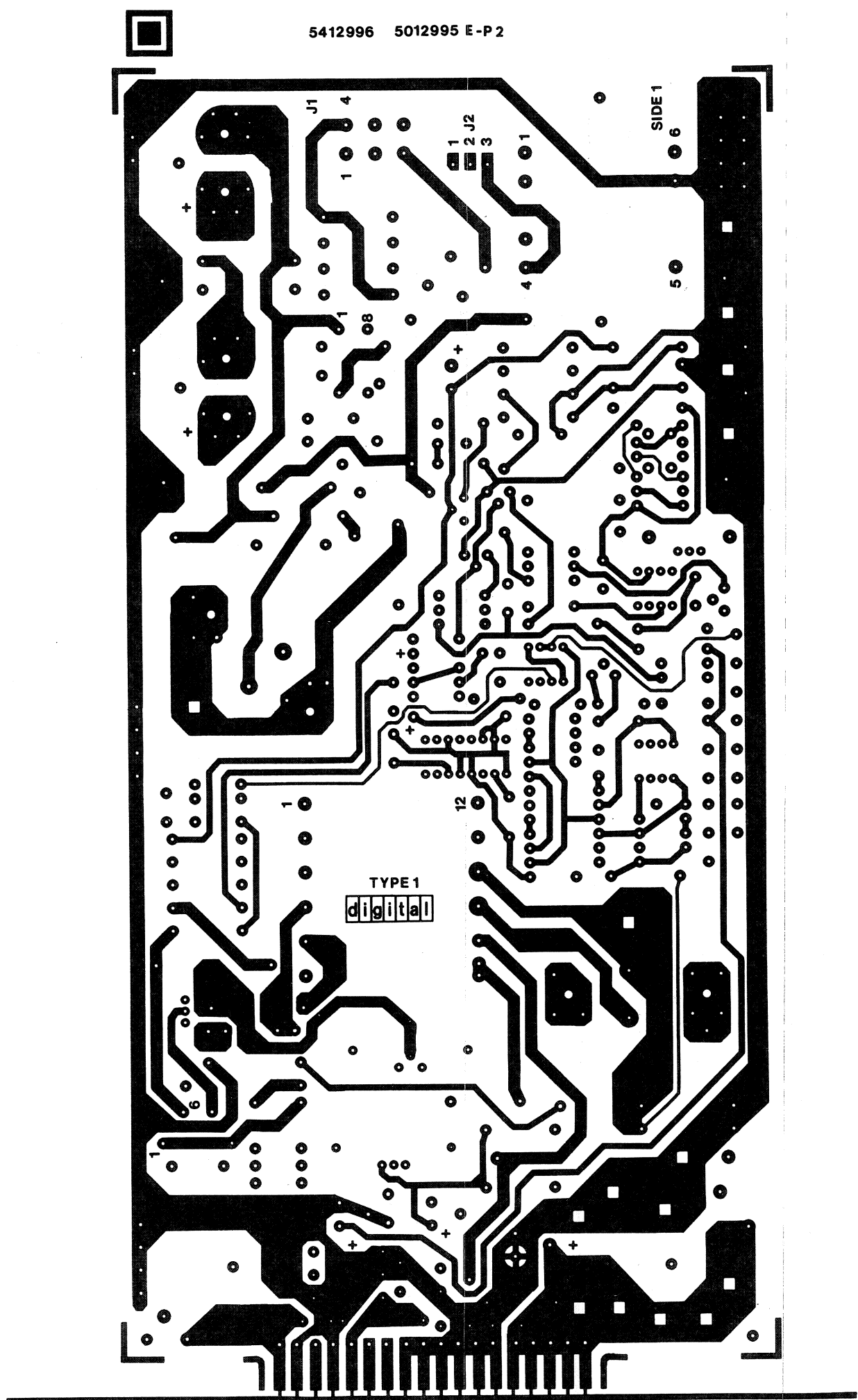
5

6

7

8

THIS DRAWING AND SPECIFICATIONS HEREIN, ARE THE PROPERTY OF THE DIGITAL EQUIPMENT CORPORATION. NO PART OF THIS DRAWING OR SPECIFICATIONS SHALL BE REPRODUCED OR USED IN ANY MANNER WITHOUT THE WRITTEN PERMISSION OF THE DIGITAL EQUIPMENT CORPORATION. COPYRIGHT © 1973 DIGITAL EQUIPMENT CORPORATION



5412996 5012995 E-P 2

TYPE 1
digital

U/L APPROVAL

DUA 5412996-0-0 H

REVISIONS	
CHK	CHANGE NO.

TITLE		SIZE CODE		NUMBER		REV.	
H7831 POWER SUPPLY		DUA		5412996-0-0		H	
SCALE 2/1		SHF 3		OF 3		DIST.	

AUTOMATED BY PRTLIST.D(11)

P A R T S L I S T

SHEET A1 OF A3

LINE ITEM DOCUMENT NUMBER

PART NUMBER

DESCRIPTION

QTY PER VARIATION

REFERENCE DESIGNATOR

1	1	E-MD-5012995-0-0	5012995-00	H7831 POWER SUPPLY	1	
2	2		1000009-00	33.0 MMF 100V 5%200PPM DM15S	1	C2
3	3		1000016-00	100.0 MMF 100V 5%200PPM DM15S	3	C5,C15,C16
4	4		1000039-00	.056 MFD 200V 10% 663UM MYLR	1	C1
5	5		1000042-00	1000.0 MMF 100V 5%200PPM DM15S	5	C13,C24,C25,C28,C29
6	6		1000055-00	2200. MMF 250V 20% Y55 DISC	2	C3,C4
7	7		1001610-00	.01 MFD 50V =20+80 Z5U AXIAL	5	C30,C35,C36,C37,C38
8	8		1004812-00	15 MFD 20V 10% S.TANT	1	C34
9	9		1005507-00	1 MFD 100V E% 30D AL EL	1	C22
10	10		1011847-01	.01 MFD 400V 10% POLYPROP	1	C6
11	11		1015202-02	.0033 MFD 1600V 10% POLYPROP	1	C19
12	12		1001776-00	1 MFD 35V 10% S.TANT	1	C17
13	13		1010274-00	.22 MFD 50V =20+80 Z5U CER	4	C8,C10,C11,C12
14	14		1012607-00	560 MFD 20V H% 672D AL EL	1	C26
15	15		1012607-04	270 MFD 40V H% 672D AL EL	1	C20
16	16		1012607-05	20MFD 200V H% 672D AL EL	1	C18
17	17		1013466-11	.22 MFD 50V +80/-20% CER.	4	C21,C23,C27,C32
18	18		1014170-00	2700.0 MMF 100V 1% 70PPM	1	C7
19	19		1014277-00	3800 MFD 6.3V G% AL EL	1	C31
20	20		1014861-00	590 MFD 200V E% AL EL	2	C9,C14
21	21		1014883-00	470 MFD 50V G% AL EL	1	C33
22	22		1100114-00	D 664 GS\75PCB PIV= 25V SP	5	D10,D13,D39,D40,D21
23	23		1105796-00	IN 4004 PIV=400 I= 1A D041 SP	5	D32,D34,D24,D25,D26
24	24		1105873-00	.4MS,121 VZ= 5.1 1% .400W	1	D38
25	25		1109991-01	4M6,8A21 VZ= 6.8 1% .40W	1	D15
26	26		1112594-01	A115B PIV=200 I= 3A	1	D31
27	27		1112595-00	A114F PIV= 50 I= 1A	7	D1,D2,D3,U5,D12,D41,D20
28	28		1112595-01	A114B PIV=200 I= 1A	7	D4,D6,D7,D8,D9,D11,D14
29	29		1112595-02	A114M PIV=600 I= 1A	2	D27,D28
30	30		1115529-00	UES2601 PIV=50V I=30A	1	D36

REVISION HISTORY

BASIC PART NO: 5412996

DRN: VIN PARECHANIAN DATE: 2-20-78

ENG: ECO NUMBER

REV SECTION A OF A

CHKID: TONY

DATE: 16-MAR-78

TITLE H7831 POWER SUPPLY

PARTS LIST

ENG: ECO NUMBER

REV SECTION A OF A

CHKID:

DATE: 16-MAR-78

TITLE H7831 POWER SUPPLY

PARTS LIST

ENG: ECO NUMBER

REV SECTION A OF A

CHKID: TONY

DATE: 16-MAR-78

TITLE H7831 POWER SUPPLY

PARTS LIST

ENG: ECO NUMBER

REV SECTION A OF A

CHKID: TONY

DATE: 16-MAR-78

TITLE H7831 POWER SUPPLY

PARTS LIST

ENG: ECO NUMBER

REV SECTION A OF A

CHKID: TONY

DATE: 16-MAR-78

TITLE H7831 POWER SUPPLY

PARTS LIST

ENG: ECO NUMBER

REV SECTION A OF A

CHKID: TONY

DATE: 16-MAR-78

TITLE H7831 POWER SUPPLY

PARTS LIST

ENG: ECO NUMBER

REV SECTION A OF A

CHKID: TONY

DATE: 16-MAR-78

TITLE H7831 POWER SUPPLY

PARTS LIST

"THIS DRAWING AND SPECIFICATIONS HEREIN, ARE THE PROPERTY OF DIGITAL EQUIPMENT CORPORATION AND SHALL NOT BE REPRODUCED OR COPIED OR USED IN WHOLE OR IN PART AS THE BASIS FOR THE MANUFACTURE OR SALE OF ITEMS WITHOUT WRITTEN PERMISSION."

COPYRIGHT (C) 1979, DIGITAL EQUIPMENT CORPORATION

LINE ITEM	DOCUMENT NUMBER	PART NUMBER	DESCRIPTION	QTY PER VARIATION 00	REFERENCE DESIGNATOR
79	79	1514271-00	D 4401 NPN 4WC SI125 20	3	Q1,Q2,Q8
80	80	1614272-00	PULSE XFMR, 4 WOUND	1	T3
81	81	1614273-00	PULSE XFMR, TRI-WOUND	1	T4
82	82	1615251-00	42.0 OHM VARIABLE L 11A	1	L2
83	83	1615252-00	210.0 OHM VARIABLE L 75A	1	L1
84	84	1615253-00	XFMR P=AB 5=25V	1	T2
85	85	1615668-00	XFMR P=245=360V S=5V02,5A	1	T1
86	86	1910282-00	301AN UP AMP	1	E2
87	87	1911944-00	555CN TIMER, FUNCT, BLOCK	1	E4
88	88	1912048-00	DEC 7812-02 VOLT REG, FIXED +12	2	E1
89	89	1914156-00	LM 393 VOLT. COMPARATOR DUAL	1	E5
90	90	1914250-00	3524 MODULATOR-REGULATING	1	E1
91	91	3610267-00	DECAL, ADHESIVE BACK "DANGER HIG	1	E5
92	92	7416423-00	PLASTIC SAFETY COVER	1	
93	93	9006557-00	NUT, KEP	3	
94	94	90065563-00	NUT, KEP 4=40X 1/4 AF	2	
95	95	9006633-00	WASHER, LOCK, INT, 2800D X .146ID	2	
96	96	9007906-00	*** THIS ITEM IS NOT USED ***		
97	97	9008172-00	WASHER, FLAT, SS .250 OD X .125 I	4	
98	98	9009950-01	*** THIS ITEM IS NOT USED ***		
99	99	9006660-00	WASHER, FLAT, .375 O.D. X .187 I	4	
100	100	9007993-01	SCREW, PAN, PHIL, 6=32X 9/16	4	
101	101	9007801-00	WASHER, LOCK, S.S. #6	4	
102	102	9007985-00	SPACER, HEX, ALUM, 6=32, .250 X	2	
103	103	9008079-00	WASHER, FLAT FIBER OD. 1/4	4	
104	104	9008212-00	SCREW, NYLON, SLTD PAN HD, 6=32	4	
105	105	9008301-01	*** THIS ITEM IS NOT USED ***		
106	106	9009236-01	SCREW, TAPPING, TYPE F, PAN, PHIL,	4	
107	107	9009516-06	*** THIS ITEM IS NOT USED ***		
108	108	9009676-00	TERM LUG 1POS SOLDER	1	
109	109	9009795-00	SCREW, SEWS, SLOTTED PAN HD 10=	4	
110	110	9009798-00	SPACER, CERAMIC, .186 ODX, .078 ID	10	
111	111	9107350-44	*** THIS ITEM IS NOT USED ***		
112	112	1300197-00	33 1/4W 5% CC	1	R52
113	113	1302466-00	100 K 1/4W 5% CC	1	R53
114	114	1305255-00	121 K 1/4W 1% RN55D-F 100PPM	1	R38
115	115	1001765-00	5000.0 MMF 100V 20% 250 DISC	1	C39
116	116	1115369-00	VM 18 PIV=100 1=1A	1	E3
117	117	9006010-01	SCREW, PAN, PHIL, 4=40X 5/16	3	
118	118	9009769-00	WASHER, RECTANGULAR, .405X, .225X, 0	1	

0 NOTE: SEE E-0A-5412996-0-0 FOR ADDITIONAL INSERTION INFORMATION

SECTION A OF A	SIZE	CODE	DOCUMENT NUMBER	REV
D I C I T A L	K	PL	5412996-0-DBP	H