

FIELD MAINTENANCE PRINT SET

* THIS DRAWING AND SPECIFICATIONS, HEREIN, ARE THE PROPERTY OF DIGITAL EQUIPMENT CORPORATION AND SHALL NOT BE REPRODUCED OR COPIED OR USED IN WHOLE OR IN PART AS THE BASIS FOR THE MANUFACTURE OR SALE OF ITEMS WITHOUT WRITTEN PERMISSION." COPYRIGHT © 1987 DIGITAL EQUIPMENT CORPORATION.

B-TC-DESPA-0-DBU
K-PL-DESPA-0-DBP
B-DD-5416804-0-0
D-UA-5416804-0-0
K-PL-5416804-0-DBP
K-CS-5416804-0-1
A-PS-1700303-0-0

```

ETHERNET INTERFACE
ETHERNET INTERFACE (PL)
NETWORK INTERFACE OPTION (DD ONLY)
NETWORK INTERFACE OPTION
NETWORK INTERFACE OPTION (PL)
NETWORK INTERFACE OPTION (DD ONLY)
CABLE ASSEMBLY, 40 COND, FLAT

```

UNIT VARIATIONS
COVERED BY THIS
PRINT SET

DESVA-AA

DESVA
FIELD MAINTENANCE
PRINT SET

DIGITAL EQUIPMENT
CORPORATION

PRINT SET PART
NUMBER MP-02431-01
REV A1

FILE NAME: TC-DESVA-0-DBUA

| REVISION HISTORY | | | | | DRN. | DATE | TITLE | | | |
|------------------|------------|------|---------|--|---------------------------|-----------|-----------------------|------|-------------|------|
| DATE | ECO NUMBER | REV. | INITIAL | | PAUL GAGNE | 05-FEB-87 | ETHERNET INTERFACE | | | |
| | | | | | CHK'D | DATE | | | | |
| | | | | | D. HEALY | 19-FEB-87 | | | | |
| | | | | | DES. ENG. | DATE | | | | |
| | | | | | L. KIZINA | 19-FEB-87 | | | | |
| | | | | | RESP. ENG. | DATE | SIZE | CODE | NUMBER | REV. |
| | | | | | G. LORD | 19-FEB-87 | B | TC | DESVA-0-DBU | A |
| | | | | | FIELD SERVICE | DATE | | | | |
| | | | | | M. RIOPEL | 19-FEB-87 | | | | |
| | | | | | TOP DOC. K-PL-DESVA-0-DBP | | SHEET 1 OF 1 | | | |

MLO

| LINE ITEM | TOP DOCUMENT | PART NUMBER | MIN REV | DESCRIPTION | AA A1 |
|-----------|----------------------|-------------|---------|------------------------------------|-------|
| 1 | 1 B-DD-5416804-0-0 | 54-16804-01 | | NETWORK INTERFACE OPTION FOR VAXMA | 1 |
| 2 | 2 K-PL-7023767-0-DBP | 70-23767-01 | | THIN WIRE ETHERNET KIT | 1 |
| 3 | 3 A-PS-1700303-0-0 | 17-00303-07 | | CABLE ASSY,40COND,FLAT, | 2 |
| 4 | 4 | EK-NETAA-UG | | NETWORK GUIDE | 1 |
| 5 | 5 | 37-00719-06 | | PKG MODULE OPTION DEQNA-M CUST. | 1 |

| | | | | | | | | | | |
|---|------------|-----|-------------------------|----|-------------------------|--|--------------------------|--|----------------------|--|
| REVISION HISTORY | | | KPL MATRIX FORMAT | | SECTION A OF A | | DRN: PAUL GAGNE | | D I G I T A L | |
| ENG | ECO NUMBER | REV | SECTION/VARIATION INDEX | | CHK'D: D. HEALY | | DATE: 05-FEB-87 | | TITLE PARTS LIST | |
| --- | INITIAL | A | [A] | AA | DATE: 23-FEB-87 | | DES.ENG: L. KIZINA | | ETHERNET INTERFACE | |
| | | | [B] | | DATE: 23-FEB-87 | | MFG.ENG: F. OSOWSKI | | DOCUMENT NUMBER | |
| | | | [C] | | RESP.ENG.: G. LORD | | SIZE CODE | | NUMBER | |
| | | | [D] | | DATE: 23-FEB-87 | | K | | PL | |
| | | | [E] | | RELEASE DATE: 26-FEB-87 | | RELEASE STATUS: RELEASED | | REV | |
| | | | [F] | | BASIC PART NUMBER: | | ASSEMBLY NUMBER: | | TOP DOCUMENT NUMBER: | |
| | | | [G] | | DESVA | | K-PL-DESVA-0-DBP | | FILE NAME: | |
| | | | [H] | | | | | | EDIT # | |
| | | | [J] | | | | | | 14 | |
| *THIS DRAWING AND THE SPECIFICATIONS CONTAINED HEREIN ARE CONFIDENTIAL AND PROPRIETARY. THEY ARE THE PROPERTY OF DIGITAL EQUIPMENT CORPORATION AND SHALL NOT BE REPRODUCED OR COPIED OR USED IN WHOLE OR IN PART AS THE BASIS FOR THE MANUFACTURE OR SALE OF ITEMS WITHOUT WRITTEN PERMISSION. THIS IS AN UNPUBLISHED WORK PROTECTED UNDER THE FEDERAL COPYRIGHT LAWS.* | | | | | | | | | | |

| DRAWING NO. | NO. SHEETS | PART NO. | DESCRIPTION | REVISIONS |
|--------------------|------------|------------|--------------------------|-----------|
| D-UA-5416804-0-0 | 1 | 5416804-01 | NETWORK INTERFACE OPTION | A1 |
| K-CS-5416804-0-1 | 5 | | UNIT ASSEMBLY | A |
| K-CS-5416804-0-D3X | 1 | | CIRCUIT SCHEMATICS | A |
| K-PL-5416804-0-D3P | 2 | | SCHEMATICS DATABASE | A |
| K-PC-5416804-0-D3J | 1 | | PARTS LIST | A |
| | | | DESIGN DATABASE | F |
| K-DD-5016803-0-0 | 1 | 5016803-01 | ETCHED CIRCUIT BOARD | F1 |
| | | | E.C.B. DRAWING DIRECTORY | A |

NOTES:

| | | | |
|--------------------------------------|---------------------------------|---|---|
| R E V I S I O N | H I S T O R Y | E | I |
| | | C | N |
| | | O | I |
| | | N | T |
| | | O | |
| | | D | 0 |
| | | A | 1 |
| | | T | / |
| | | E | 8 |
| | | | 7 |

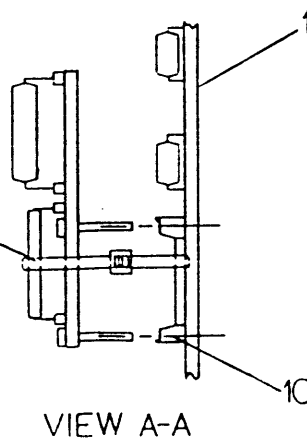
THIS DRAWING AND THE SPECIFICATIONS CONTAINED HEREIN ARE CONFIDENTIAL AND PROPRIETARY. THEY ARE THE PROPERTY OF DIGITAL EQUIPMENT CORPORATION AND SHALL NOT BE REPRODUCED OR COPIED OR USED IN WHOLE OR IN PART AS THE BASIS FOR THE MANUFACTURE OR SALE OF ITEMS WITHOUT WRITTEN PERMISSION. THIS IS AN UNPUBLISHED WORK PROTECTED UNDER THE FEDERAL COPYRIGHT LAWS.

| | | | | | |
|---------------------------|-----------------|---------------------------|------|-------------|-----|
| DRN: BLAISE DITOMMASO | DATE: 10 JAN 87 | d i g i t a l | | | |
| CHK'D: BARRY CORMIER | DATE: 10 JAN 87 | TITLE | | | |
| | | NETWORK INTERFACE OPTION | | | |
| DES.ENG.: LARRY NAHRI | DATE: 10 JAN 87 | SHEET | 1 | OF | 1 |
| | | EDIT: 0 | | | |
| RESP.ENG.: P. SCANTLESURY | DATE: 10 JAN 87 | DOCUMENT NUMBER | | | |
| | | DD FILENAME: 5416804A.DDF | | | |
| MFG.ENG.: W. BEAN | DATE: 10 JAN 87 | SIZE | CODE | NUMBER | REV |
| | | K | DD | 5416804-0-0 | A |

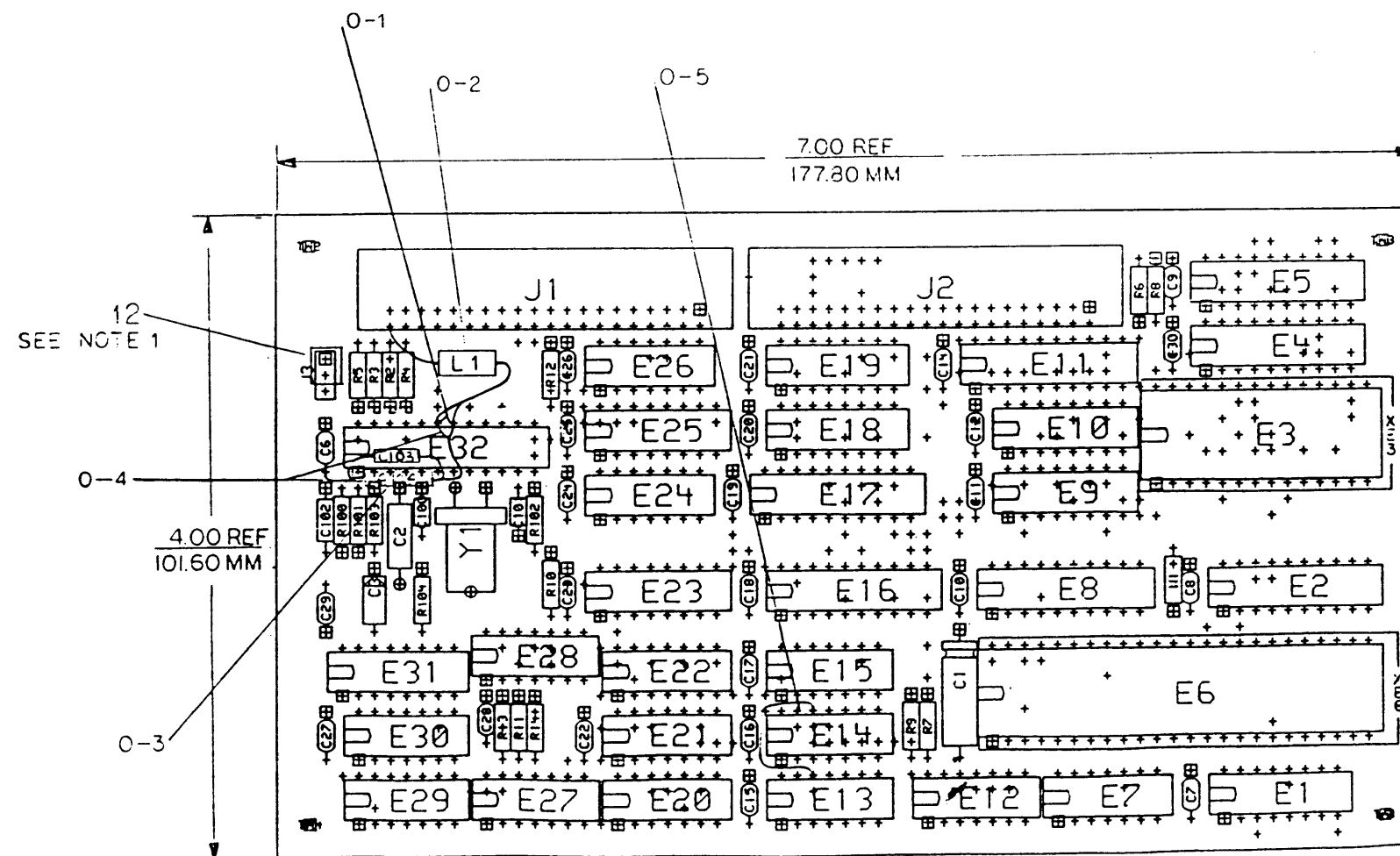
REWORK INSTRUCTION

- 0-1. Lift legs of E32-18 and E32-19.
- 0-2. Add 13 uH [Note: error in parts list desc. of 15 uH] inductor, L1 (16-23481-01) with one lead soldered to J1-40 and the other lead soldered to lifted legs E32-18 and E32-19. Use tubing (91-07256-11) to cover the exposed leads.
- 0-3. Solder the .047 uF cap, C103 (10-12784-00) in parallel with the 10 uF cap, C104 (10-17472-00).
- 0-4. Add the C103/C104 combination with the minus (-) side lead being soldered to C6 terminal 2. Solder the plus (+) side of the cap to the lifted legs of E32-18 and E32-19. Use tubing (91-07256-11) to cover exposed leads.
- 0-5. CLIP LEG OF E14-12. ADD WIRE FROM E13-12 TO CLIPPED LEG OF E14-12. USE WIRE, 30 AWG (91-05740-55).

SEE NOTE 2



VIEW A-A



NOTES:

1. INSTALL W2 (WIRE) BETWEEN J3 PINS 182 IF E6 IS A 20-23347-02, OR PINS 223 IF E6 IS A 21-21672-04.
2. TIE WRAP TO GO UNDER SOCKET OF E6.

STEP E + Y AXIS STEP TIMES

| REVISION NO. | REV | DATE |
|--------------|-----|------|
| 1 | | |

| | |
|-----------|----|
| ETCH REV. | F1 |
|-----------|----|

| SIGNATURES | DATE | |
|--|---------|---------|
| DRN. J. Lepore | 5-30-86 | digit a |
| CHK'D. J. Lepore | 5-30-86 | |
| MECH. ENG. J. Lepore | 5-30-86 | |
| PROJ. ENG. J. Lepore | 5-30-86 | |
| PROD. W. Bean | 5-30-86 | |
| SCALE 2/1 | | |
| SHT. 1 OF 1 | | |
| NEXT ATTACHED REVISION: K-00-5416804-0-0 | | |

TITLE NETWORK
INTERFACE OPT

SIZE CODE NUMBER
D UA 5416804-0

| LINE ITEM | | TOP DOCUMENT | PART NUMBER | MIN REV | DESCRIPTION | QTY PER VAR/REV | REFERENCE DESIGNATORS |
|-----------|----|------------------|-------------|---------|----------------------------------|-----------------|-----------------------|
| | | | | | | 01 A1 | |
| 1 | 1 | D-MD-5016803-0-0 | 50-16803-01 | | CIRCUIT DRILL AND ETCH | 1 | |
| 2 | 2 | | 10-12784-00 | | 0.047MFD 50V +/-20% Z5U C | 25 | C6-C12,C14-C30,C103 |
| 3 | 3 | | 10-13466-33 | | 100 PFD 50V +/- 2% NPO C | 2 | C100,C101 |
| 4 | 4 | | 10-13466-42 | | 4700 PFD 50V +/- 2% NPO C | 1 | C2 |
| 5 | 5 | | 10-13466-50 | | 580 PFD 50V +/- 5% NPO C | 1 | C102 |
| 6 | 6 | | 10-15573-02 | | 0.10 MFD 50V +/-10% X7R C | 1 | C3 |
| 7 | 7 | | 10-17472-00 | | 10 MFD 35V +/-10% ALU | 2 | C1,C104 |
| 8 | 8 | | 12-15006-07 | | SKT,IC 28PIN DIP TIN S0LD | 1 | XE3 |
| 9 | 9 | | 12-15006-20 | | SKT,IC 48PIN DIP TIN S0LD | 1 | XE6 |
| 10 | 10 | | 12-15901-06 | | PCB HEADER 03PIN(1X03).100CC STR | 1 | J3 |
| 11 | 11 | | 12-18762-02 | | CONN,P+S 40PIN(2X20).100CC | 2 | J1,J2 |
| 12 | 12 | | 12-18733-00 | | JUMPER 02POS(1X02).100CC | 1 | W2 |
| 13 | 13 | | 13-00229-00 | | 100.0 .25 W 5.0 % CF | 3 | R6,R102,R104 |
| 14 | 14 | | 13-00316-00 | | 470.0 .25 W 5.0 % CF | 1 | R13 |
| 15 | 15 | | 13-00432-00 | | 3.0 K .25 W 5.0 % CF | 1 | R100 |
| 16 | 16 | | 13-00447-00 | | 4.70 K .25 W 5.0 % CF | 7 | R7-R12,R14 |
| 17 | 17 | | 13-11522-00 | | 200.0 .25 W 5.0 % CF | 1 | R103 |
| 18 | 18 | | 13-13150-75 | | 40.20 .25 W 1.0 % RN55D-F10 | 4 | R2-R5 |
| 19 | 19 | | 13-18247-00 | | 510.0 .25 W 5.0 % CF | 1 | R101 |
| 20 | 20 | | 16-23481-01 | | CHOKE,MINI,HIGH CURRENT,15UH | 1 | L1 |
| 21 | 21 | | 18-22815-01 | | XTAL 20.000 MHZ | 1 | Y1 |
| 22 | 22 | | 19-10533-00 | | 74S03 NAND GATE-QUAD 2IN,0 | 1 | E29 |
| 23 | 23 | | 19-12649-00 | | LS75 LATCH 4BIT,BISTABLE | 1 | E1 |
| 24 | 24 | | 19-12808-00 | | LS11 AND GATE-TRIPLE 3IN | 1 | E28 |
| 25 | 25 | | 19-12810-00 | | LS20 NAND GATE-DUAL 4IN | 1 | E26 |
| 26 | 26 | | 19-12816-00 | | LS32 OR GATE-QUAD 2IN,POS | 1 | E7 |
| 27 | 27 | | 19-12824-00 | | LS74 FF-D DUAL,EDGE TRIGG | 1 | E27 |
| 28 | 28 | | 19-13471-00 | | LS367 DRIVER,BUS,HEX,TRI-S | 1 | E25 |
| 29 | 29 | | 19-15193-00 | | LS244 DRIVER,LINE,OCTAL,TR | 1 | E4 |
| 30 | 30 | | 19-15219-00 | | LS373 FF-D OCTAL-TRANSPARE | 2 | E2,E5 |
| 31 | 31 | | 19-15932-00 | | LS125 BUFFER,QUAD BUS | 1 | E20 |
| 32 | 32 | | 19-20373-01 | | LS137 DECODER,3 TO 8 | 1 | E23 |

| | | | | | | | |
|---|------------|-------------------|-------------------------|----------------------|---------------------------|--------------------------|---------------|
| REVISION HISTORY | | KPL MODULE FORMAT | | SECTION A OF A | | DRN: B. DITOMMASO | |
| ENG | ECO NUMBER | REV | SECTION/VARIATION INDEX | | DATE: 08-JAN-87 | | D I G I T A L |
| | INITIAL | A | [A] 01 | [M] | CHK'D: B. CORMIER | TITLE PARTS LIST | |
| | | | [B] | [N] | DATE: 08-JAN-87 | NETWORK INTERFACE OPTION | |
| | | | [C] | [P] | DES.ENG: L. NAHRI | | |
| | | | [D] | [Q] | DATE: 08-JAN-87 | DOCUMENT NUMBER | |
| | | | [E] | [R] | RESP.ENG.: P. SCANTLEBURY | SIZE | CODE |
| | | | [F] | [S] | DATE: 03-JAN-87 | NUMBER | REV |
| | | | [H] | [T] | | K | PL |
| | | | [J] | [V] | | 5416804-0-DBP | A |
| | | | [K] | [W] | MFG.ENG: W. BEAN | RELEASE DATE: 08-JAN-87 | |
| | | | [L] | [Y] | DATE: 08-JAN-87 | RELEASE STATUS: RELEASED | |
| BASIC PART NUMBER: | | ASSEMBLY NUMBER: | | TOP DOCUMENT NUMBER: | | FILE NAME: | |
| 5416804 | | D-UA-5416804-0-0 | | K-DD-5416804-0-0 | | GH058A.PLS | |
| | | | | | | EDIT # 33 | |
| "THIS DRAWING AND THE SPECIFICATIONS CONTAINED HEREIN ARE CONFIDENTIAL AND PROPRIETARY. THEY ARE THE PROPERTY OF DIGITAL EQUIPMENT CORPORATION AND SHALL NOT BE REPRODUCED OR COPIED OR USED IN WHOLE OR IN PART AS THE BASIS FOR THE MANUFACTURE OR SALE OF ITEMS WITHOUT WRITTEN PERMISSION. THIS IS AN UNPUBLISHED WORK PROTECTED UNDER THE FEDERAL COPYRIGHT LAWS." | | | | | | | |
| *** DOCUMENT CONVERTED TO VAX *** | | | | | | | |

AUTOMATED BY VAXKPL (V1.3)

PARTS LIST

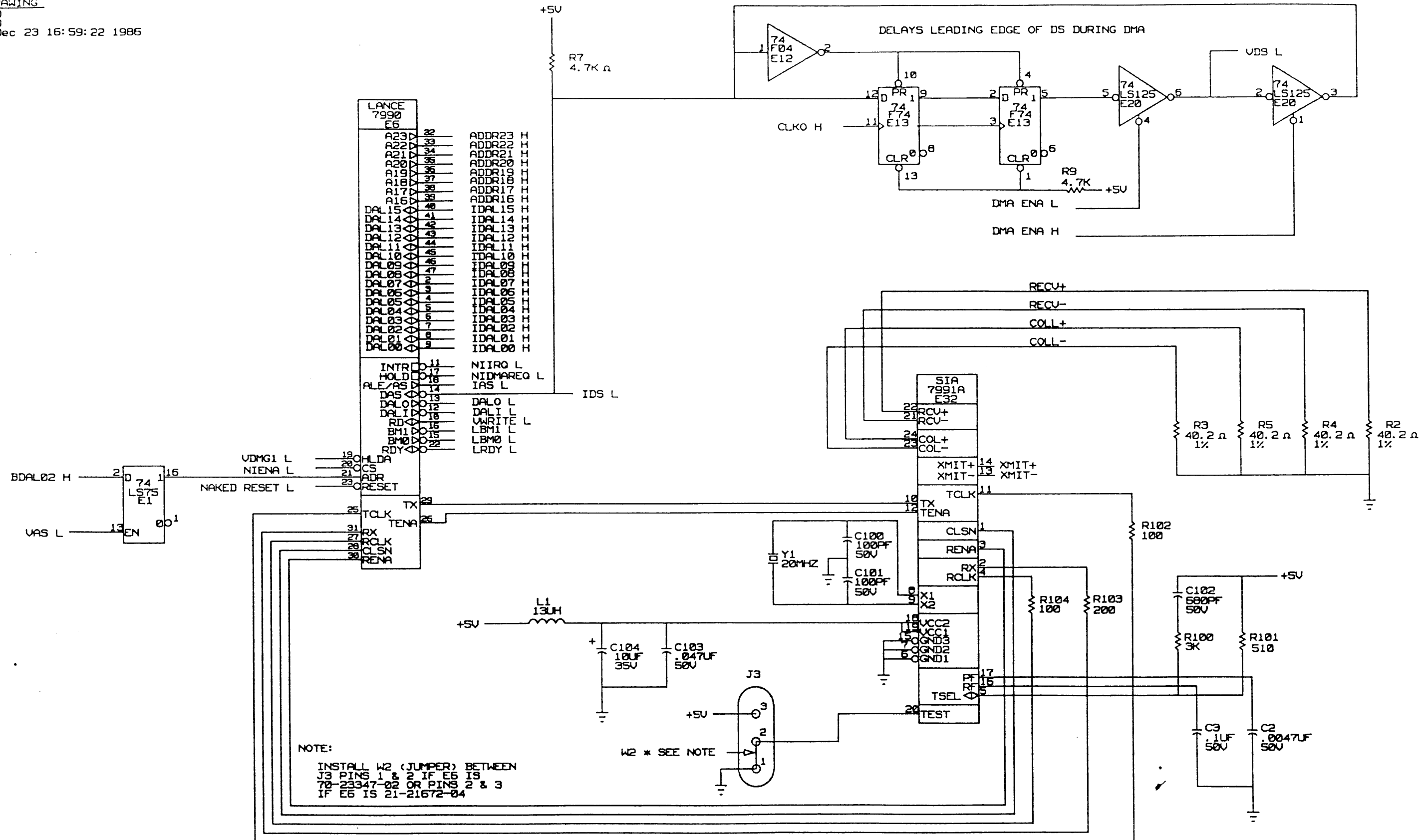
REFERENCE DESIGNATORS

| LINE ITEM | | TOP DOCUMENT | PART NUMBER | MIN REV | DESCRIPTION | QTY 01 A1 | PER VAR/REV | REFERENCE DESIGNATORS |
|-----------|----|---------------|-------------|------------|----------------------------------|-----------------|-------------|-----------------------|
| 33 | 33 | | 19-20441-01 | | 74F245 TRANSCEIVER, BI-DIREC | 2 | | E8, E16 |
| 34 | 34 | | 19-20572-01 | | 74F244 BUFFER/LINE DRIVER, O | 2 | | E11, E17 |
| 35 | 35 | | 19-21306-01 | | 74F02 NOR GATE, QUAD, 2-IN | 1 | | E14 |
| 36 | 36 | | 19-21307-01 | | 74F04 HEX INVERTER | 2 | | E12, E30 |
| 37 | 37 | | 19-21309-01 | | 74F08 AND GATE, QUAD, 2-IN | 2 | | E15, E24 |
| 38 | 38 | | 19-21312-01 | | 74F32 OR GATE, QUAD, 2-IN | 2 | | E21, E22 |
| 39 | 39 | | 19-21314-01 | | 74F74 FF-D, DUAL, POS., EDGE | 1 | | E13 |
| 40 | 40 | | 19-21324-01 | | 74F175 FF-D, QUAD | 1 | | E31 |
| 41 | 41 | | 19-21330-01 | | 74F257 MUX, QUAD, 2-IN | 4 | | E9, E10, E18, E19 |
| 42 | 42 | | 19-21671-03 | | INTERFACE, SERIAL ADAPTOR 300MIL | 1 | | E32 |
| 43 | 43 | SEE NOTE # 43 | 21-21672-07 | | CONTROLLER, LOCAL AREA NET | 1 | | E6 |
| 44 | 44 | | 23-180E6-00 | | E6-01, E6-02, E6-03 U | 1 | | E3 |
| 45 | 45 | | 90-09135-00 | | JUMPER, WIRE, INSULATED, BLACK B | 1 | | W1 |
| 46 | 46 | SEE NOTE # 46 | 90-10152-00 | | TIE, CABLE | 1 | | |
| 47 | 47 | | 91-05740-55 | | WIRE(WRAP) 30AWG KYNAR UL14 | A/R | | |
| 48 | 48 | | 91-07256-11 | | TUBING, TEFLON .027ID | A/R | | |

43 NOTE: SUBSTITUTE 70-23347-02 (SHORT PIN LANCE ASSY) FOR THE 21-21672-07 IF UNAVAILABLE
46 NOTE: USE ONLY WITH 70-23347-02

| | | | | | | | | |
|---------------|--|-------|--------------------------|----------------|------|------|-----------------|-----|
| D I G I T A L | | TITLE | NETWORK INTERFACE OPTION | SECTION A OF A | SIZE | CODE | DOCUMENT NUMBER | REV |
| | | | | | K | PL | 5416804-0-DBP | A |

DRAWING
NIBRD
NIBRD
Tue Dec 23 16:59:22 1986



THIS DRAWING AND SPECIFICATIONS
ARE THE PROPERTY OF DIGITAL
EQUIPMENT CORPORATION. NO
PART OF THIS DRAWING OR
SPECIFICATIONS MAY BE
REPRODUCED OR TRANSMITTED
IN ANY FORM OR BY ANY
MEANS, ELECTRONIC OR
MECHANICAL, INCLUDING
PHOTOCOPYING, RECORDING,
OR BY ANY INFORMATION
STORAGE AND RETRIEVAL
SYSTEM, WITHOUT PERMISSION
IN WRITING FROM DIGITAL
EQUIPMENT CORPORATION.

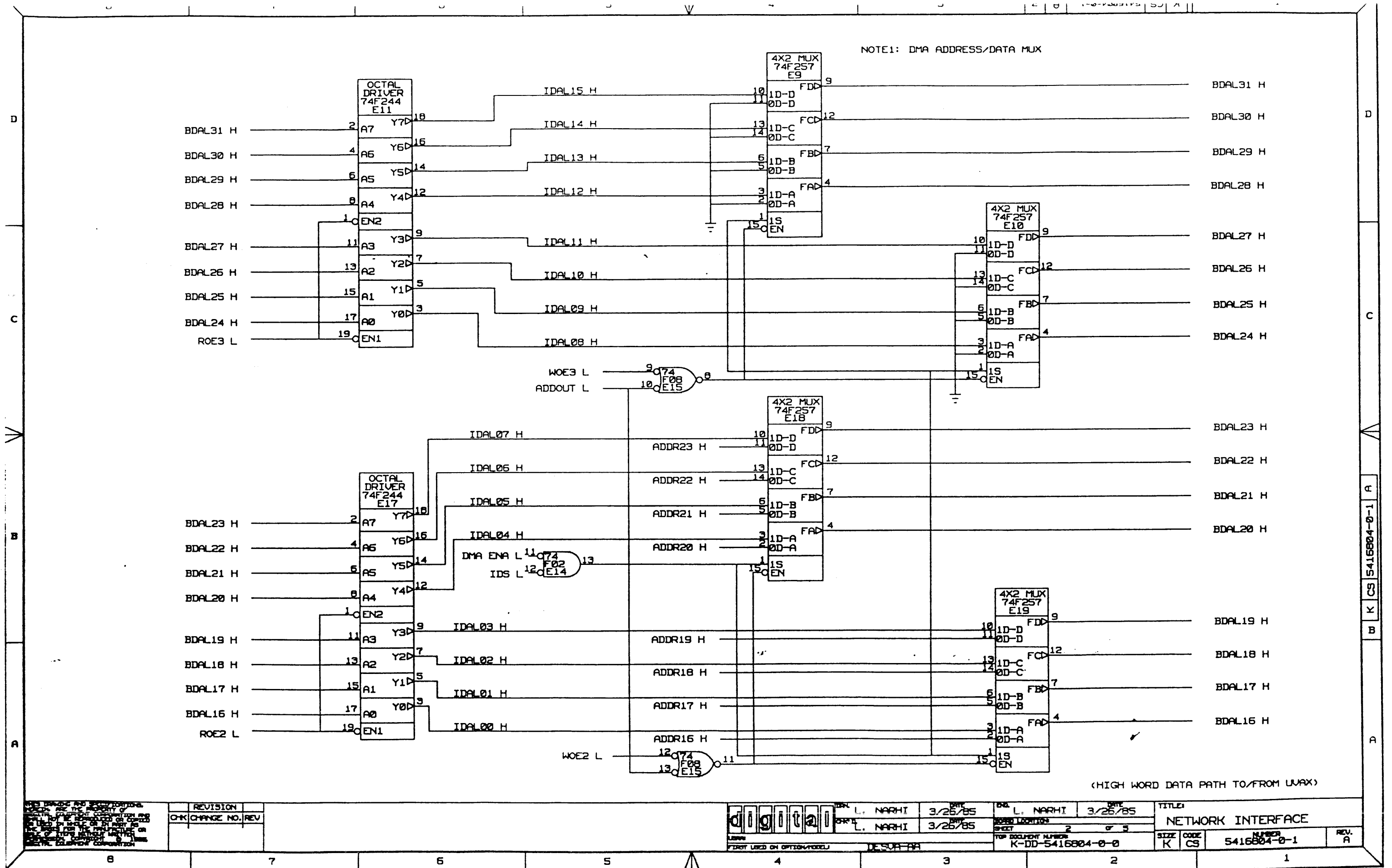
| REVISION | NO. | REV. |
|----------|------------|------|
| OK | CHANGE NO. | REV. |

digital

DESIGNED BY L. NARHI
CHECKED BY L. NARHI
DATE 2/19/85
DATE 2/19/85

DESIGNED BY L. NARHI
CHECKED BY L. NARHI
DATE 2/19/85
DATE 2/19/85

TITLE: NETWORK INTERFACE
SHEET 1 OF 5
TOP DOCUMENT NUMBER K-DD-5416804-0-0
SIZE K CODE CS NUMBER 5416804-0-1 REV. A

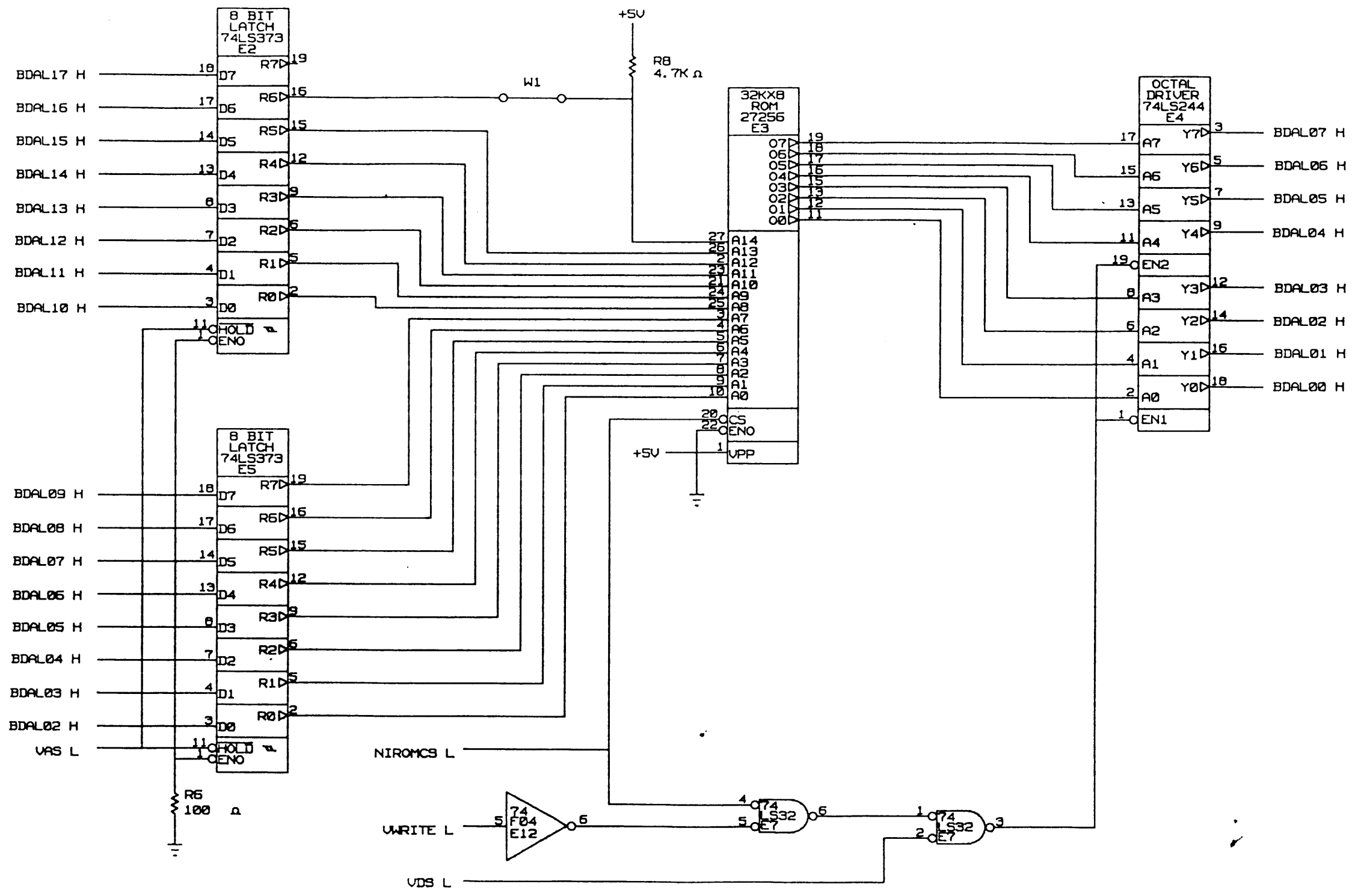


THIS DRAWING AND ANY INFORMATION CONTAINED HEREIN ARE THE PROPERTY OF DIGITAL EQUIPMENT CORPORATION AND ARE NOT TO BE REPRODUCED OR COPIED IN ANY FORM OR BY ANY MEANS WITHOUT THE WRITTEN PERMISSION OF DIGITAL EQUIPMENT CORPORATION.

| REVISION | NO. | REV. |
|----------|------------|------|
| OK | CHANGE NO. | REV. |

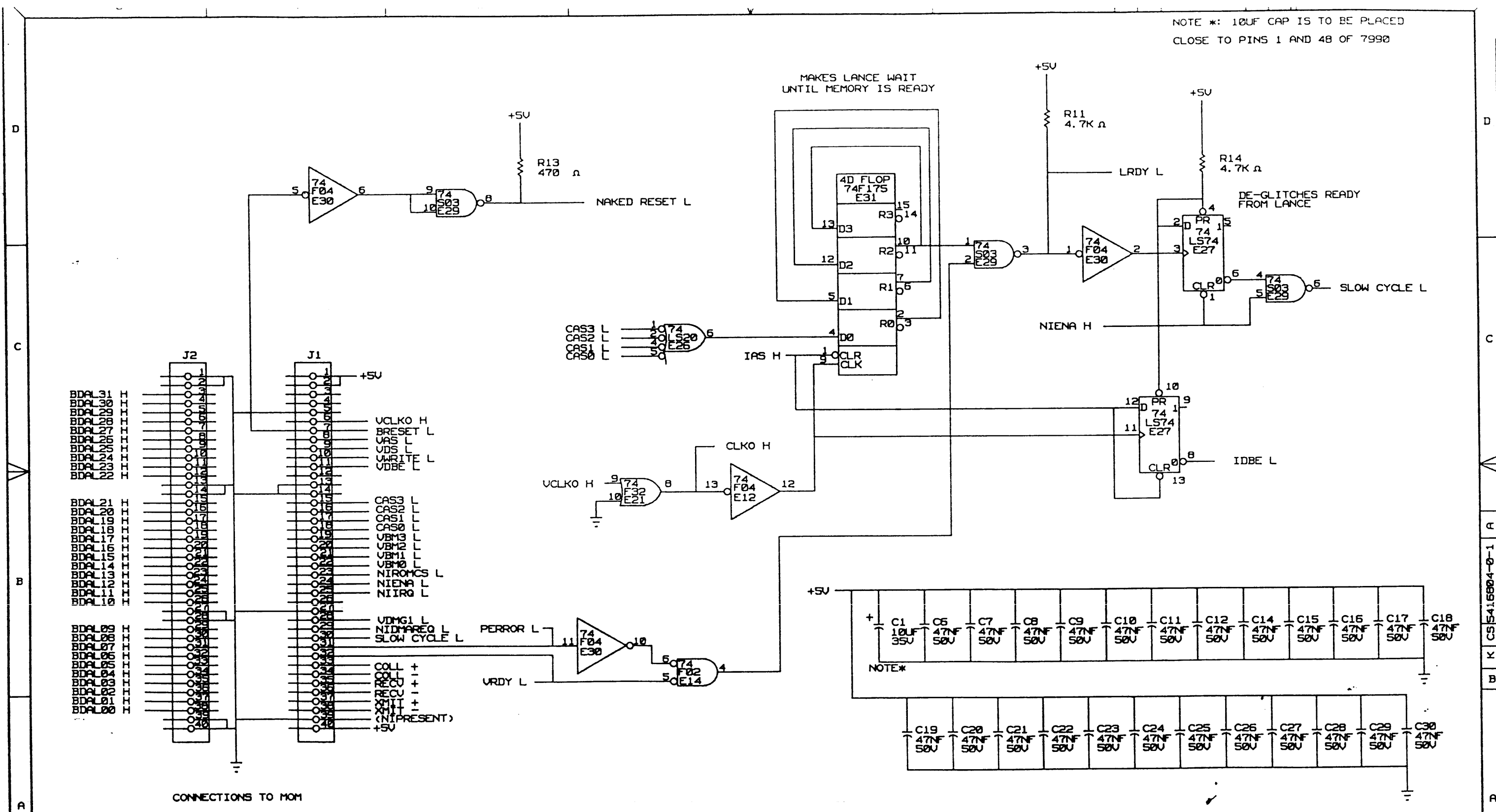
digital L. NARHI 3/26/85 L. NARHI 3/26/85
DESIGNER: DESUA-PA
FIRST USED ON OPTION MODEL: K-DD-5416804-0-0

| | | | | |
|---------------------------------------|---------|----------|---------------------|--------|
| TITLE: NETWORK INTERFACE | SIZE: K | CODE: CS | NUMBER: 5416804-0-1 | REV: A |
| TOP DOCUMENT NUMBER: K-DD-5416804-0-0 | | | | |



| | | | | | | | | | | | | | | | | | | | | | | | | | | | | | | | | | |
|--|--|--|--|--|--|--|--|--|--|---|--|------------------------------------|--|------------------------------------|--|---|--|---------------------------------|--|--|--|---|--|---|--|---|--|---------------------------------|--|--|--|------------------------------|--|
| <div>THIS DRAWING AND SPECIFICATIONS ARE THE PROPERTY OF DIGITAL EQUIPMENT CORPORATION AND SHALL NOT BE REPRODUCED OR COPIED IN ANY FORM OR BY ANY MEANS, ELECTRONIC OR MECHANICAL, INCLUDING PHOTOCOPYING, RECORDING, OR BY ANY INFORMATION STORAGE AND RETRIEVAL SYSTEM, WITHOUT PERMISSION IN WRITING FROM DIGITAL EQUIPMENT CORPORATION.</div> | | | | | | | | | | <div>REVISION</div> <div>CHK CHANGE NO. REV</div> | | | | | | | | | | | | <div>DATE</div> <div>L. NARHI 3/26/85</div> | | <div>DATE</div> <div>L. NARHI 3/26/85</div> | | <div>TITLE</div> <div>NETWORK INTERFACE</div> | | <div>SIZE</div> <div>K CS</div> | | <div>NUMBER</div> <div>5416804-0-1</div> | | <div>REV.</div> <div>A</div> | |
| | | | | | | | | | | <div>DESIGNER</div> <div>L. NARHI</div> | | <div>DATE</div> <div>3/26/85</div> | | <div>DATE</div> <div>3/26/85</div> | | <div>TITLE</div> <div>NETWORK INTERFACE</div> | | <div>SIZE</div> <div>K CS</div> | | <div>NUMBER</div> <div>5416804-0-1</div> | | <div>REV.</div> <div>A</div> | | | | | | | | | | | |
| | | | | | | | | | | <div>DESIGNER</div> <div>L. NARHI</div> | | <div>DATE</div> <div>3/26/85</div> | | <div>DATE</div> <div>3/26/85</div> | | <div>TITLE</div> <div>NETWORK INTERFACE</div> | | <div>SIZE</div> <div>K CS</div> | | <div>NUMBER</div> <div>5416804-0-1</div> | | <div>REV.</div> <div>A</div> | | | | | | | | | | | |
| | | | | | | | | | | <div>DESIGNER</div> <div>L. NARHI</div> | | <div>DATE</div> <div>3/26/85</div> | | <div>DATE</div> <div>3/26/85</div> | | <div>TITLE</div> <div>NETWORK INTERFACE</div> | | <div>SIZE</div> <div>K CS</div> | | <div>NUMBER</div> <div>5416804-0-1</div> | | <div>REV.</div> <div>A</div> | | | | | | | | | | | |
| | | | | | | | | | | <div>DESIGNER</div> <div>L. NARHI</div> | | <div>DATE</div> <div>3/26/85</div> | | <div>DATE</div> <div>3/26/85</div> | | <div>TITLE</div> <div>NETWORK INTERFACE</div> | | <div>SIZE</div> <div>K CS</div> | | <div>NUMBER</div> <div>5416804-0-1</div> | | <div>REV.</div> <div>A</div> | | | | | | | | | | | |
| | | | | | | | | | | <div>DESIGNER</div> <div>L. NARHI</div> | | <div>DATE</div> <div>3/26/85</div> | | <div>DATE</div> <div>3/26/85</div> | | <div>TITLE</div> <div>NETWORK INTERFACE</div> | | <div>SIZE</div> <div>K CS</div> | | <div>NUMBER</div> <div>5416804-0-1</div> | | <div>REV.</div> <div>A</div> | | | | | | | | | | | |
| | | | | | | | | | | <div>DESIGNER</div> <div>L. NARHI</div> | | <div>DATE</div> <div>3/26/85</div> | | <div>DATE</div> <div>3/26/85</div> | | <div>TITLE</div> <div>NETWORK INTERFACE</div> | | <div>SIZE</div> <div>K CS</div> | | <div>NUMBER</div> <div>5416804-0-1</div> | | <div>REV.</div> <div>A</div> | | | | | | | | | | | |
| | | | | | | | | | | <div>DESIGNER</div> <div>L. NARHI</div> | | <div>DATE</div> <div>3/26/85</div> | | <div>DATE</div> <div>3/26/85</div> | | <div>TITLE</div> <div>NETWORK INTERFACE</div> | | <div>SIZE</div> <div>K CS</div> | | <div>NUMBER</div> <div>5416804-0-1</div> | | <div>REV.</div> <div>A</div> | | | | | | | | | | | |
| | | | | | | | | | | <div>DESIGNER</div> <div>L. NARHI</div> | | <div>DATE</div> <div>3/26/85</div> | | <div>DATE</div> <div>3/26/85</div> | | <div>TITLE</div> <div>NETWORK INTERFACE</div> | | <div>SIZE</div> <div>K CS</div> | | <div>NUMBER</div> <div>5416804-0-1</div> | | <div>REV.</div> <div>A</div> | | | | | | | | | | | |
| | | | | | | | | | | <div>DESIGNER</div> <div>L. NARHI</div> | | <div>DATE</div> <div>3/26/85</div> | | <div>DATE</div> <div>3/26/85</div> | | <div>TITLE</div> <div>NETWORK INTERFACE</div> | | <div>SIZE</div> <div>K CS</div> | | <div>NUMBER</div> <div>5416804-0-1</div> | | <div>REV.</div> <div>A</div> | | | | | | | | | | | |
| | | | | | | | | | | <div>DESIGNER</div> <div>L. NARHI</div> | | <div>DATE</div> <div>3/26/85</div> | | <div>DATE</div> <div>3/26/85</div> | | <div>TITLE</div> <div>NETWORK INTERFACE</div> | | <div>SIZE</div> <div>K CS</div> | | <div>NUMBER</div> <div>5416804-0-1</div> | | <div>REV.</div> <div>A</div> | | | | | | | | | | | |
| | | | | | | | | | | <div>DESIGNER</div> <div>L. NARHI</div> | | <div>DATE</div> <div>3/26/85</div> | | <div>DATE</div> <div>3/26/85</div> | | <div>TITLE</div> <div>NETWORK INTERFACE</div> | | <div>SIZE</div> <div>K CS</div> | | <div>NUMBER</div> <div>5416804-0-1</div> | | <div>REV.</div> <div>A</div> | | | | | | | | | | | |
| | | | | | | | | | | <div>DESIGNER</div> <div>L. NARHI</div> | | <div>DATE</div> <div>3/26/85</div> | | <div>DATE</div> <div>3/26/85</div> | | <div>TITLE</div> <div>NETWORK INTERFACE</div> | | <div>SIZE</div> <div>K CS</div> | | <div>NUMBER</div> <div>5416804-0-1</div> | | <div>REV.</div> <div>A</div> | | | | | | | | | | | |
| | | | | | | | | | | <div>DESIGNER</div> <div>L. NARHI</div> | | <div>DATE</div> <div>3/26/85</div> | | <div>DATE</div> <div>3/26/85</div> | | <div>TITLE</div> <div>NETWORK INTERFACE</div> | | <div>SIZE</div> <div>K CS</div> | | <div>NUMBER</div> <div>5416804-0-1</div> | | <div>REV.</div> <div>A</div> | | | | | | | | | | | |
| | | | | | | | | | | <div>DESIGNER</div> <div>L. NARHI</div> | | <div>DATE</div> <div>3/26/85</div> | | <div>DATE</div> <div>3/26/85</div> | | <div>TITLE</div> <div>NETWORK INTERFACE</div> | | <div>SIZE</div> <div>K CS</div> | | <div>NUMBER</div> <div>5416804-0-1</div> | | <div>REV.</div> <div>A</div> | | | | | | | | | | | |
| | | | | | | | | | | <div>DESIGNER</div> <div>L. NARHI</div> | | <div>DATE</div> <div>3/26/85</div> | | <div>DATE</div> <div>3/26/85</div> | | <div>TITLE</div> <div>NETWORK INTERFACE</div> | | <div>SIZE</div> <div>K CS</div> | | <div>NUMBER</div> <div>5416804-0-1</div> | | <div>REV.</div> <div>A</div> | | | | | | | | | | | |
| | | | | | | | | | | <div>DESIGNER</div> <div>L. NARHI</div> | | <div>DATE</div> <div>3/26/85</div> | | <div>DATE</div> <div>3/26/85</div> | | <div>TITLE</div> <div>NETWORK INTERFACE</div> | | <div>SIZE</div> <div>K CS</div> | | <div>NUMBER</div> <div>5416804-0-1</div> | | <div>REV.</div> <div>A</div> | | | | | | | | | | | |
| | | | | | | | | | | <div>DESIGNER</div> <div>L. NARHI</div> | | <div>DATE</div> <div>3/26/85</div> | | <div>DATE</div> <div>3/26/85</div> | | <div>TITLE</div> <div>NETWORK INTERFACE</div> | | <div>SIZE</div> <div>K CS</div> | | <div>NUMBER</div> <div>5416804-0-1</div> | | <div>REV.</div> <div>A</div> | | | | | | | | | | | |
| | | | | | | | | | | <div>DESIGNER</div> <div>L. NARHI</div> | | <div>DATE</div> <div>3/26/85</div> | | <div>DATE</div> <div>3/26/85</div> | | <div>TITLE</div> <div>NETWORK INTERFACE</div> | | <div>SIZE</div> <div>K CS</div> | | <div>NUMBER</div> <div>5416804-0-1</div> | | <div>REV.</div> <div>A</div> | | | | | | | | | | | |
| | | | | | | | | | | <div>DESIGNER</div> <div>L. NARHI</div> | | <div>DATE</div> <div>3/26/85</div> | | <div>DATE</div> <div>3/26/85</div> | | <div>TITLE</div> <div>NETWORK INTERFACE</div> | | <div>SIZE</div> <div>K CS</div> | | <div>NUMBER</div> <div>5416804-0-1</div> | | <div>REV.</div> <div>A</div> | | | | | | | | | | | |
| | | | | | | | | | | <div>DESIGNER</div> <div>L. NARHI</div> | | <div>DATE</div> <div>3/26/85</div> | | <div>DATE</div> <div>3/26/85</div> | | <div>TITLE</div> <div>NETWORK INTERFACE</div> | | <div>SIZE</div> <div>K CS</div> | | <div>NUMBER</div> <div>5416804-0-1</div> | | <div>REV.</div> <div>A</div> | | | | | | | | | | | |
| | | | | | | | | | | <div>DESIGNER</div> <div>L. NARHI</div> | | <div>DATE</div> <div>3/26/85</div> | | <div>DATE</div> <div>3/26/85</div> | | <div>TITLE</div> <div>NETWORK INTERFACE</div> | | <div>SIZE</div> <div>K CS</div> | | <div>NUMBER</div> <div>5416804-0-1</div> | | <div>REV.</div> <div>A</div> | | | | | | | | | | | |
| | | | | | | | | | | <div>DESIGNER</div> <div>L. NARHI</div> | | <div>DATE</div> <div>3/26/85</div> | | <div>DATE</div> <div>3/26/85</div> | | <div>TITLE</div> <div>NETWORK INTERFACE</div> | | <div>SIZE</div> <div>K CS</div> | | <div>NUMBER</div> <div>5416804-0-1</div> | | <div>REV.</div> <div>A</div> | | | | | | | | | | | |
| | | | | | | | | | | <div>DESIGNER</div> <div>L. NARHI</div> | | <div>DATE</div> <div>3/26/85</div> | | <div>DATE</div> <div>3/26/85</div> | | <div>TITLE</div> <div>NETWORK INTERFACE</div> | | <div>SIZE</div> <div>K CS</div> | | <div>NUMBER</div> <div>5416804-0-1</div> | | <div>REV.</div> <div>A</div> | | | | | | | | | | | |
| | | | | | | | | | | <div>DESIGNER</div> <div>L. NARHI</div> | | <div>DATE</div> <div>3/26/85</div> | | <div>DATE</div> <div>3/26/85</div> | | <div>TITLE</div> <div>NETWORK INTERFACE</div> | | <div>SIZE</div> <div>K CS</div> | | <div>NUMBER</div> <div>5416804-0-1</div> | | <div>REV.</div> <div>A</div> | | | | | | | | | | | |
| | | | | | | | | | | <div>DESIGNER</div> <div>L. NARHI</div> | | <div>DATE</div> <div>3/26/85</div> | | <div>DATE</div> <div>3/26/85</div> | | <div>TITLE</div> <div>NETWORK INTERFACE</div> | | <div>SIZE</div> <div>K CS</div> | | <div>NUMBER</div> <div>5416804-0-1</div> | | <div>REV.</div> <div>A</div> | | | | | | | | | | | |
| | | | | | | | | | | <div>DESIGNER</div> <div>L. NARHI</div> | | <div>DATE</div> <div>3/26/85</div> | | <div>DATE</div> <div>3/26/85</div> | | <div>TITLE</div> <div>NETWORK INTERFACE</div> | | <div>SIZE</div> <div>K CS</div> | | <div>NUMBER</div> <div>5416804-0-1</div> | | <div>REV.</div> <div>A</div> | | | | | | | | | | | |
| | | | | | | | | | | <div>DESIGNER</div> <div>L. NARHI</div> | | <div>DATE</div> <div>3/26/85</div> | | <div>DATE</div> <div>3/26/85</div> | | <div>TITLE</div> <div>NETWORK INTERFACE</div> | | <div>SIZE</div> <div>K CS</div> | | <div>NUMBER</div> <div>5416804-0-1</div> | | <div>REV.</div> <div>A</div> | | | | | | | | | | | |
| | | | | | | | | | | <div>DESIGNER</div> <div>L. NARHI</div> | | <div>DATE</div> <div>3/26/85</div> | | <div>DATE</div> <div>3/26/85</div> | | <div>TITLE</div> <div>NETWORK INTERFACE</div> | | <div>SIZE</div> <div>K CS</div> | | <div>NUMBER</div> <div>5416804-0-1</div> | | <div>REV.</div> <div>A</div> | | | | | | | | | | | |
| | | | | | | | | | | <div>DESIGNER</div> <div>L. NARHI</div> | | <div>DATE</div> <div>3/26/85</div> | | <div>DATE</div> <div>3/26/85</div> | | <div>TITLE</div> <div>NETWORK INTERFACE</div> | | <div>SIZE</div> <div>K CS</div> | | <div>NUMBER</div> <div>5416804-0-1</div> | | <div>REV.</div> <div>A</div> | | | | | | | | | | | |
| | | | | | | | | | | <div>DESIGNER</div> <div>L. NARHI</div> | | <div>DATE</div> <div>3/26/85</div> | | <div>DATE</div> <div>3/26/85</div> | | <div>TITLE</div> <div>NETWORK INTERFACE</div> | | <div>SIZE</div> <div>K CS</div> | | <div>NUMBER</div> <div>5416804-0-1</div> | | <div>REV.</div> <div>A</div> | | | | | | | | | | | |
| | | | | | | | | | | <div>DESIGNER</div> <div>L. NARHI</div> | | <div>DATE</div> <div>3/26/85</div> | | <div>DATE</div> <div>3/26/85</div> | | <div>TITLE</div> <div>NETWORK INTERFACE</div> | | <div>SIZE</div> <div>K CS</div> | | <div>NUMBER</div> <div>5416804-0-1</div> | | <div>REV.</div> <div>A</div> | | | | | | | | | | | |
| | | | | | | | | | | <div>DESIGNER</div> <div>L. NARHI</div> | | <div>DATE</div> <div>3/26/85</div> | | <div>DATE</div> <div>3/26/85</div> | | <div>TITLE</div> <div>NETWORK INTERFACE</div> | | <div>SIZE</div> <div>K CS</div> | | <div>NUMBER</div> <div>5416804-0-1</div> | | <div>REV.</div> <div>A</div> | | | | | | | | | | | |
| | | | | | | | | | | <div>DESIGNER</div> <div>L. NARHI</div> | | <div>DATE</div> <div>3/26/85</div> | | <div>DATE</div> <div>3/26/85</div> | | <div>TITLE</div> <div>NETWORK INTERFACE</div> | | <div>SIZE</div> <div>K CS</div> | | <div>NUMBER</div> <div>5416804-0-1</div> | | <div>REV.</div> <div>A</div> | | | | | | | | | | | |
| | | | | | | | | | | <div>DESIGNER</div> <div>L. NARHI</div> | | <div>DATE</div> <div>3/26/85</div> | | <div>DATE</div> <div>3/26/85</div> | | <div>TITLE</div> <div>NETWORK INTERFACE</div> | | <div>SIZE</div> <div>K CS</div> | | <div>NUMBER</div> <div>5416804-0-1</div> | | <div>REV.</div> <div>A</div> | | | | | | | | | | | |
| | | | | | | | | | | <div>DESIGNER</div> <div>L. NARHI</div> | | <div>DATE</div> <div>3/26/85</div> | | <div>DATE</div> <div>3/26/85</div> | | <div>TITLE</div> <div>NETWORK INTERFACE</div> | | <div>SIZE</div> <div>K CS</div> | | <div>NUMBER</div> <div>5416804-0-1</div> | | <div>REV.</div> <div>A</div> | | | | | | | | | | | |
| | | | | | | | | | | <div>DESIGNER</div> <div>L. NARHI</div> | | <div>DATE</div> <div>3/26/85</div> | | <div>DATE</div> <div>3/26/85</div> | | <div>TITLE</div> <div>NETWORK INTERFACE</div> | | <div>SIZE</div> <div>K CS</div> | | <div>NUMBER</div> <div>5416804-0-1</div> | | <div>REV.</div> <div>A</div> | | | | | | | | | | | |
| | | | | | | | | | | <div>DESIGNER</div> <div>L. NARHI</div> | | <div>DATE</div> <div>3/26/85</div> | | <div>DATE</div> <div>3/26/85</div> | | <div>TITLE</div> <div>NETWORK INTERFACE</div> | | <div>SIZE</div> <div>K CS</div> | | <div>NUMBER</div> <div>5416804-0-1</div> | | <div>REV.</div> <div>A</div> | | | | | | | | | | | |
| | | | | | | | | | | <div>DESIGNER</div> <div>L. NARHI</div> | | <div>DATE</div> <div>3/26/85</div> | | <div>DATE</div> <div>3/26/85</div> | | <div>TITLE</div> <div>NETWORK INTERFACE</div> | | <div>SIZE</div> <div>K CS</div> | | <div>NUMBER</div> <div>5416804-0-1</div> | | <div>REV.</div> <div>A</div> | | | | | | | | | | | |
| | | | | | | | | | | <div>DESIGNER</div> <div>L. NARHI</div> | | <div>DATE</div> <div>3/26/85</div> | | <div>DATE</div> <div>3/26/85</div> | | <div>TITLE</div> <div>NETWORK INTERFACE</div> | | <div>SIZE</div> <div>K CS</div> | | <div>NUMBER</div> <div>5416804-0-1</div> | | <div>REV.</div> <div>A</div> | | | | | | | | | | | |
| | | | | | | | | | | <div>DESIGNER</div> <div>L. NARHI</div> | | <div>DATE</div> <div>3/26/85</div> | | <div>DATE</div> <div>3/26/85</div> | | <div>TITLE</div> <div>NETWORK INTERFACE</div> | | <div>SIZE</div> <div>K CS</div> | | <div>NUMBER</div> <div>5416804-0-1</div> | | <div>REV.</div> <div>A</div> | | | | | | | | | | | |
| | | | | | | | | | | <div>DESIGNER</div> <div>L. NARHI</div> | | <div>DATE</div> <div>3/26/85</div> | | <div>DATE</div> <div>3/26/85</div> | | <div>TITLE</div> <div>NETWORK INTERFACE</div> | | <div>SIZE</div> <div>K CS</div> | | <div>NUMBER</div> <div>5416804-0-1</div> | | <div>REV.</div> <div>A</div> | | | | | | | | | | | |
| | | | | | | | | | | <div>DESIGNER</div> <div>L. NARHI</div> | | <div>DATE</div> <div>3/26/85</div> | | <div>DATE</div> <div>3/26/85</div> | | <div>TITLE</div> <div>NETWORK INTERFACE</div> | | <div>SIZE</div> <div>K CS</div> | | <div>NUMBER</div> <div>5416804-0-1</div> | | <div>REV.</div> <div>A</div> | | | | | | | | | | | |
| | | | | | | | | | | <div>DESIGNER</div> <div>L. NARHI</div> | | <div>DATE</div> <div>3/26/85</div> | | <div>DATE</div> <div>3/26/85</div> | | <div>TITLE</div> <div>NETWORK INTERFACE</div> | | <div>SIZE</div> <div>K CS</div> | | <div>NUMBER</div> <div>5416804-0-1</div> | | <div>REV.</div> <div>A</div> | | | | | | | | | | | |
| | | | | | | | | | | <div>DESIGNER</div> <div>L. NARHI</div> | | <div>DATE</div> <div>3/26/85</div> | | <div>DATE</div> <div>3/26/85</div> | | <div>TITLE</div> <div>NETWORK INTERFACE</div> | | <div>SIZE</div> <div>K CS</div> | | <div>NUMBER</div> <div>5416804-0-1</div> | | <div>REV.</div> <div>A</div> | | | | | | | | | | | |
| | | | | | | | | | | <div>DESIGNER</div> <div>L. NARHI</div> | | <div>DATE</div> <div>3/26/85</div> | | <div>DATE</div> <div>3/26/85</div> | | <div>TITLE</div> <div>NETWORK INTERFACE</div> | | <div>SIZE</div> <div>K CS</div> | | <div>NUMBER</div> <div>5416804-0-1</div> | | <div>REV.</div> <div>A</div> | | | | | | | | | | | |
| | | | | | | | | | | <div>DESIGNER</div> <div>L. NARHI</div> | | <div>DATE</div> <div>3/26/85</div> | | <div>DATE</div> <div>3/26/85</div> | | <div>TITLE</div> <div>NETWORK INTERFACE</div> | | <div>SIZE</div> <div>K CS</div> | | <div>NUMBER</div> <div>5416804-0-1</div> | | <div>REV.</div> <div>A</div> | | | | | | | | | | | |
| | | | | | | | | | | <div>DESIGNER</div> <div>L. NARHI</div> | | <div>DATE</div> <div>3/26/85</div> | | <div>DATE</div> <div>3/26/85</div> | | <div>TITLE</div> <div>NETWORK INTERFACE</div> | | <div>SIZE</div> <div>K CS</div> | | <div>NUMBER</div> <div>5416804-0-1</div> | | <div>REV.</div> <div>A</div> | | | | | | | | | | | |
| | | | | | | | | | | <div>DESIGNER</div> <div>L. NARHI</div> | | <div>DATE</div> <div>3/26/85</div> | | <div>DATE</div> <div>3/26/85</div> | | <div>TITLE</div> <div>NETWORK INTERFACE</div> | | <div>SIZE</div> <div>K CS</div> | | <div>NUMBER</div> <div>5416804-0-1</div> | | <div>REV.</div> <div>A</div> | | | | | | | | | | | |
| | | | | | | | | | | <div>DESIGNER</div> <div>L. NARHI</div> | | <div>DATE</div> <div>3/26/85</div> | | <div>DATE</div> <div>3/26/85</div> | | <div>TITLE</div> <div>NETWORK INTERFACE</div> | | <div>SIZE</div> <div>K CS</div> | | <div>NUMBER</div> <div>5416804-0-1</div> | | <div>REV.</div> <div>A</div> | | | | | | | | | | | |
| | | | | | | | | | | <div>DESIGNER</div> <div>L. NARHI</div> | | <div>DATE</div> <div>3/26/85</div> | | <div>DATE</div> <div>3/26/85</div> | | <div>TITLE</div> <div>NETWORK INTERFACE</div> | | <div>SIZE</div> <div>K CS</div> | | <div>NUMBER</div> <div>5416804-0-1</div> | | <div>REV.</div> <div>A</div> | | | | | | | | | | | |
| | | | | | | | | | | <div>DESIGNER</div> <div>L. NARHI</div> | | <div>DATE</div> <div>3/26/85</div> | | <div>DATE</div> <div>3/26/85</div> | | <div>TITLE</div> <div>NETWORK INTERFACE</div> | | <div>SIZE</div> <div>K CS</div> | | <div>NUMBER</div> <div>5416804-0-1</div> | | <div>REV.</div> <div>A</div> | | | | | | | | | | | |
| | | | | | | | | | | <div>DESIGNER</div> <div>L. NARHI</div> | | <div>DATE</div> <div>3/26/85</div> | | <div>DATE</div> <div>3/26/85</div> | | <div>TITLE</div> <div>NETWORK INTERFACE</div> | | <div>SIZE</div> <div>K CS</div> | | <div>NUMBER</div> <div>5416804-0-1</div> | | <div>REV.</div> <div>A</div> | | | | | | | | | | | |
| | | | | | | | | | | <div>DESIGNER</div> <div>L. NARHI</div> | | <div>DATE</div> <div>3/26/85</div> | | <div>DATE</div> <div>3/26/85</div> | | <div>TITLE</div> <div>NETWORK INTERFACE</div> | | <div>SIZE</div> <div>K CS</div> | | <div>NUMBER</div> <div>5416804-0-1</div> | | <div>REV.</div> <div>A</div> | | | | | | | | | | | |
| | | | | | | | | | | <div>DESIGNER</div> <div>L. NARHI</div> | | <div>DATE</div> <div>3/26/85</div> | | <div>DATE</div> <div>3/26/85</div> | | <div>TITLE</div> <div>NETWORK INTERFACE</div> | | <div>SIZE</div> <div>K CS</div> | | <div>NUMBER</div> <div>5416804-0-1</div> | | <div>REV.</div> <div>A</div> | | | | | | | | | | | |
| | | | | | | | | | | <div>DESIGNER</div> <div>L. NARHI</div> | | <div>DATE</div> <div>3/26/85</div> | | <div>DATE</div> <div>3/26/85</div> | | <div>TITLE</div> <div>NETWORK INTERFACE</div> | | <div>SIZE</div> <div>K CS</div> | | <div>NUMBER</div> <div>5416804-0-1</div> | | <div>REV.</div> <div>A</div> | | | | | | | | | | | |
| | | | | | | | | | | <div>DESIGNER</div> <div>L. NARHI</div> | | <div>DATE</div> <div>3/26/85</div> | | <div>DATE</div> <div>3/26/85</div> | | <div>TITLE</div> <div>NETWORK INTERFACE</div> | | <div>SIZE</div> <div>K CS</div> | | <div>NUMBER</div> <div>5416804-0-1</div> | | <div>REV.</div> <div>A</div> | | | | | | | | | | | |
| | | | | | | | | | | <div>DESIGNER</div> <div>L. NARHI</div> | | <div>DATE</div> <div>3/26/85</div> | | <div>DATE</div> <div>3/26/85</div> | | <div>TITLE</div> <div>NETWORK INTERFACE</div> | | <div>SIZE</div> <div>K CS</div> | | <div>NUMBER</div> <div>5416804-0-1</div> | | <div>REV.</div> <div>A</div> | | | | | | | | | | | |
| | | | | | | | | | | <div>DESIGNER</div> <div>L. NARHI</div> | | <div>DATE</div> <div>3/26/85</div> | | <div>DATE</div> <div>3/26/85</div> | | <div>TITLE</div> <div>NETWORK INTERFACE</div> | | <div>SIZE</div> <div>K CS</div> | | <div>NUMBER</div> <div>5416804-0-1</div> | | <div>REV.</div> <div>A</div> | | | | | | | | | | | |
| | | | | | | | | | | <div>DESIGNER</div> <div>L. NARHI</div> | | <div>DATE</div> <div>3/26/85</div> | | <div>DATE</div> <div>3/26/85</div> | | <div>TITLE</div> <div>NETWORK INTERFACE</div> | | <div>SIZE</div> <div>K CS</div> | | <div>NUMBER</div> <div>5416804-0-1</div> | | <div>REV.</div> <div>A</div> | | | | | | | | | | | |
| | | | | | | | | | | <div>DESIGNER</div> <div>L. NARHI</div> | | <div>DATE</div> <div>3/26/85</div> | | <div>DATE</div> <div>3/26/85</div> | | <div>TITLE</div> <div>NETWORK INTERFACE</div> | | <div>SIZE</div> <div>K CS</div> | | <div>NUMBER</div> <div>5416804-0-1</div> | | <div>REV.</div> <div>A</div> | | | | | | | | | | | |
| | | | | | | | | | | <div>DESIGNER</div> <div>L. NARHI</div> | | <div>DATE</div> <div>3/26/85</div> | | <div>DATE</div> <div>3/26/85</div> | | <div>TITLE</div> <div>NETWORK INTERFACE</div> | | <div>SIZE</div> <div>K CS</div> | | <div>NUMBER</div> <div>5416804-0-1</div> | | <div>REV.</div> <div>A</div> | | | | | | | | | | | |
| | | | | | | | | | | <div>DESIGNER</div> <div>L. NARHI</div> | | <div>DATE</div> <div>3/26/85</div> | | <div>DATE</div> <div>3/26/85</div> | | <div>TITLE</div> <div>NETWORK INTERFACE</div> | | <div>SIZE</div> <div>K CS</div> | | <div>NUMBER</div> <div>5416804-0-1</div> | | <div>REV.</div> <div>A</div> | | | | | | | | | | | |
| | | | | | | | | | | <div>DESIGNER</div> <div>L. NARHI</div> | | <div>DATE</div> <div>3/26/85</div> | | <div>DATE</div> <div>3/26/85</div> | | <div>TITLE</div> <div>NETWORK INTERFACE</div> | | <div>SIZE</div> <div>K CS</div> | | <div>NUMBER</div> <div>5416804-0-1</div> | | <div>REV.</div> <div>A</div> | | | | | | | | | | | |
| | | | | | | | | | | <div>DESIGNER</div> <div>L. NARHI</div> | | <div>DATE</div> <div>3/26/85</div> | | <div>DATE</div> <div>3/26/85</div> | | <div>TITLE</div> <div>NETWORK INTERFACE</div> | | <div>SIZE</div> <div>K CS</div> | | <div>NUMBER</div> <div>5416804-0-1</div> | | <div>REV.</div> <div>A</div> | | | | | | | | | | | |
| | | | | | | | | | | <div>DESIGNER</div> <div>L. NARHI</div> | | <div>DATE</div> <div>3/26/85</div> | | <div>DATE</div> <div>3/26/85</div> | | <div>TITLE</div> <div>NETWORK INTERFACE</div> | | <div>SIZE</div> <div>K CS</div> | | <div>NUMBER</div> <div>5416804-0-1</div> | | <div>REV.</div> <div>A</div> | | | | | | | | | | | |
| | | | | | | | | | | <div>DESIGNER</div> <div>L. NARHI</div> | | <div>DATE</div> <div>3/26/85</div> | | <div>DATE</div> <div>3/26/85</div> | | <div>TITLE</div> <div>NETWORK INTERFACE</div> | | <div>SIZE</div> <div>K CS</div> | | <div>NUMBER</div> <div>5416804-0-1</div> | | <div>REV.</div> <div>A</div> | | | | | | | | | | | |
| | | | | | | | | | | <div>DESIGNER</div> <div>L. NARHI</div> | | <div>DATE</div> <div>3/26/85</div> | | <div>DATE</div> <div>3/26/85</div> | | <div>TITLE</div> <div>NETWORK INTERFACE</div> | | <div>SIZE</div> <div>K CS</div> | | <div>NUMBER</div> <div>5416804-0-1</div> | | <div>REV.</div> <div>A</div> | | | | | | | | | | | |
| | | | | | | | | | | <div>DESIGNER</div> <div>L. NARHI</div> | | <div>DATE</div> <div>3/26/85</div> | | <div>DATE</div> <div>3/26/85</div> | | <div>TITLE</div> <div>NETWORK INTERFACE</div> | | <div>SIZE</div> <div>K CS</div> | | <div>NUMBER</div> <div>5416804-0-1</div> | | <div>REV.</div> <div>A</div> | | | | | | | | | | | |
| | | | | | | | | | | <div>DESIGNER</div> <div>L. NARHI</div> | | <div>DATE</div> <div>3/26/85</div> | | <div>DATE</div> <div>3/26/85</div> | | <div>TITLE</div> <div>NETWORK INTERFACE</div> | | <div>SIZE</div> <div>K CS</div> | | <div>NUMBER</div> <div>5416804-0-1</div> | | <div>REV.</div> <div>A</div> | | | | | | | | | | | |
| | | | | | | | | | | <div>DESIGNER</div> <div>L. NARHI</div> | | <div>DATE</div> <div>3/26/85</div> | | <div>DATE</div> <div>3/26/85</div> | | <div>TITLE</div> <div>NETWORK INTERFACE</div> | | <div>SIZE</div> <div>K CS</div> | | <div>NUMBER</div> <div>5416804-0-1</div> | | <div>REV.</div> <div>A</div> | | | | | | | | | | | |
| | | | | | | | | | | <div>DESIGNER</div> <div>L. NARHI</div> | | <div>DATE</div> <div>3/26/85</div> | | <div>DATE</div> | | | | | | | | | | | | | | | | | | | |

NOTE *: 10UF CAP IS TO BE PLACED
CLOSE TO PINS 1 AND 48 OF 7990



(I/O CONNECTOR AND READY LOGIC)

THIS DEVICE AND SUBSYSTEMS ARE THE PROPERTY OF THE U.S. GOVERNMENT AND ARE TO BE USED ONLY FOR THE PURPOSES AUTHORIZED BY THE U.S. GOVERNMENT. IT IS TO BE DESTROYED OR RECYCLED WHEN NO LONGER REQUIRED FOR OFFICIAL USE.

| REVISION | CHK | CHANGE NO. | REV |
|----------|-----|------------|-----|
| | | | |

digital

| | | | |
|-------------|----------|------|---------|
| DESIGNED BY | L. NARHI | DATE | 3/26/85 |
| CHECKED BY | L. NARHI | DATE | 3/26/85 |

| | | | |
|-------------|----------|------|---------|
| DESIGNED BY | L. NARHI | DATE | 3/26/85 |
| CHECKED BY | L. NARHI | DATE | 3/26/85 |

| | | | |
|-------|------|-------------------|------|
| TITLE | | NETWORK INTERFACE | |
| SIZE | CODE | NUMBER | REV. |
| K | CS | 5416804-0-1 | A |

8 7 6 5 4 3 2 1