





CUSTOMER PRINT SET		ELECTRICAL					CUSTOMER PRINT SET		MECHANICAL				
MFG. SET	FIND NO.	DRAWING NO.	REV	NO OF SHT	DESCRIPTION	OPTION NO./FILE DATE	MFG. SET	FIND NO.	DRAWING NO.	REV	NO OF SHT	DESCRIPTION	OPTION NO./FILE DATE
	1	A-PL-KL8-A-0	*	1	MULTIPLE SERIAL LINE UNIT			1	A-PL-KL8-A-0	*	1	MULTIPLE SERVICE LINE UNIT	
		A-SP-KL8-A-1	*	4	KL8-A FIELD SERVICE INSTALL. AND ACCEPTANCE PROCEDURE			3	B-DD-H326-0	#	2	KL8-A PATCH PANEL	
		A-SP-KL8-A-2	*	1	SHIPPING LIST			4	D-IA-BC08W-0-0	#	2	CABLE ASSEMBLY	
		A-SP-KL8-A-3	A	1	SOFTWARE LIST, KL8-A								
		A-SP-KL8-A-4	*	18	KL8-A ENGINEERING SPEC			5	D-IA-BC08X-0-0	#	1	CABLE, 50 PIN TO 4-8 PIN	
	2	D-UA-M8319-0-0	B	1	MULTIPLE SERIAL LINE UNIT			6	D-IA-BC08Y-0-0	#	1	CABLE ASSEMBLY	
		A-PL-M8319-0-0	B	4	MULTIPLE SERIAL LINE UNIT (P.L.)								
		D-CS-M8319-0-1	B	10	CIRCUIT SCHEMATIC								
		K-CO-M8319-0-4	#	1	X-Y COORDINATE HOLE LOCATION			7	D-IA-BC08Z-0-0	#	1	CABLE ASSEMBLY	
		D-AH-M8319-0-5	#	1	ASSY/DRILLING HOLE LAYOUT								
		B-MH-M8319-0-6	#	1	MODULE ECO HISTORY								
	3	B-DD-H326-0	#	2	KL8-A PATCH PANEL								

CUSTOMER PRINT SET CODES  
X = PRINT OF DOCUMENT INCLUDED IN PRINT SET  
C = INCLUDES ALL PRINTS INDICATED ON DOCUMENT  
S = CONFIDENTIAL AUTHORIZED SIGNATURE REQUIRED

TITLE: MULTIPLE SERIAL LINE UNIT  
SHEET 2 OF 2  
SIZE CODE: B DD  
NUMBER: KL8-A  
REV: A



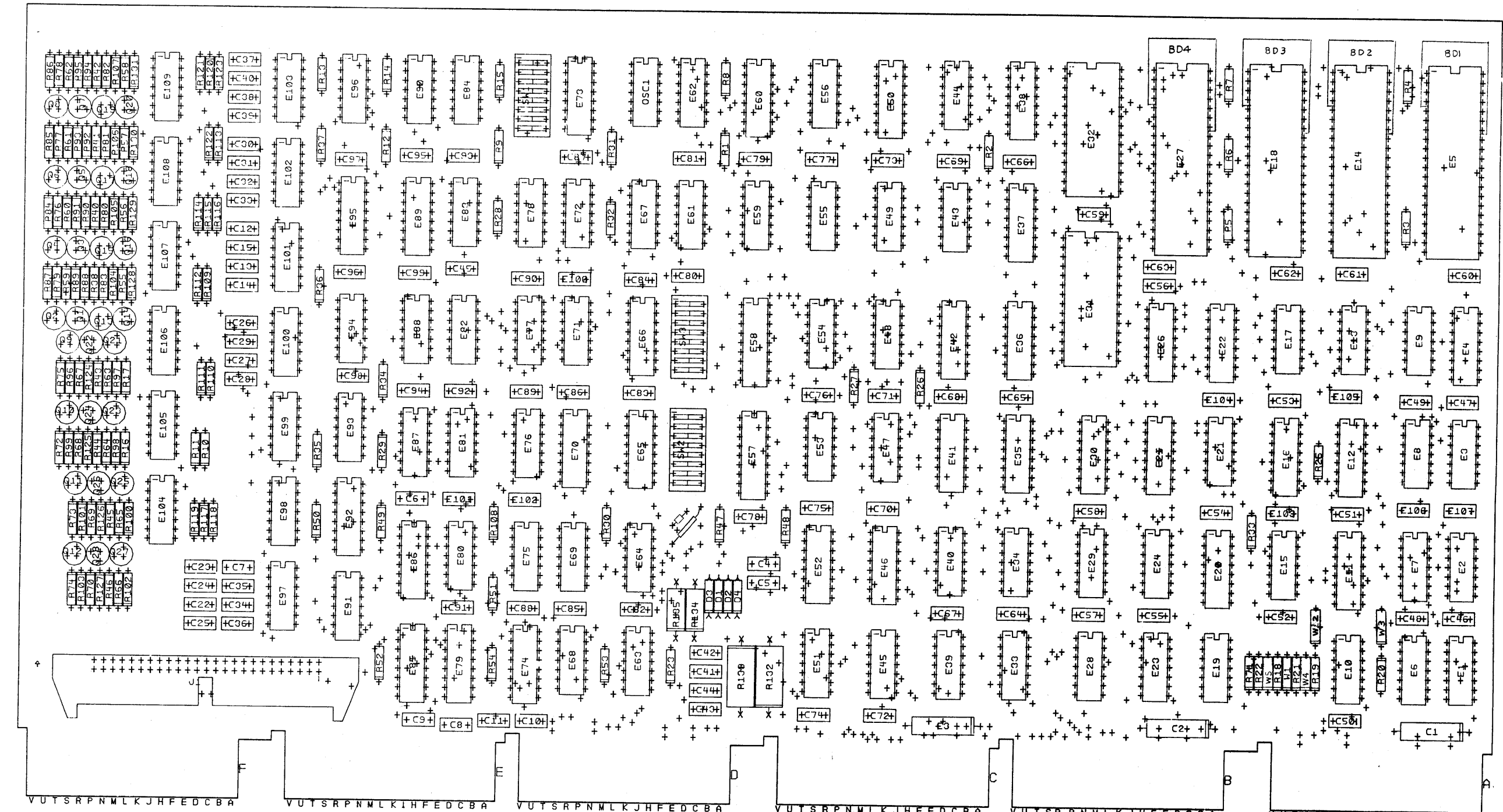






THIS DRAWING AND SPECIFICATIONS, HEREIN, ARE THE PROPERTY OF DIGITAL EQUIPMENT CORPORATION AND SHALL NOT BE REPRODUCED OR COPIED OR USED IN WHOLE OR IN PART AS THE BASIS FOR THE MANUFACTURE OR SALE OF ITEMS WITHOUT WRITTEN PERMISSION.  
 COPYRIGHT © 1972 DIGITAL EQUIPMENT CORPORATION

COMPONENT SIDE VIEW



NOTES:  
 1. W2, W3, W4, W5 ARE OPTIONAL JUMPERS. INSTALL JUMPER BOARDS BETWEEN UARTS (E5, E19, E18 & E27) AND ETCH BOARD HAND SOLDER ON SIDE ONE & PLACES ON EACH JUMPER BOARD TO UART PINS

CHK	CHANGE NO	REV	DATE	BY	APP
E1	M8319-00000	C	4-17-74	L. NARHI	
E2	M8319-00002	D	3-10-74	L. NARHI	
E3	M8319-00003	E	4-17-74	L. NARHI	
E4	M8319-00004	F	4-17-74	L. NARHI	

NOTE: 2. REMOVE THE FOLLOWING GOLD FINGERS FROM ARTWORK. DELETE FINGERS ON SIDE 1: AD1, AE1, AH1, AJ1, AK1, AL1, AM1, BD1, BE1, BH1, BJ1, CU1, DD1, DE1, DH1, DJ1. DELETE FINGERS ON SIDE 2: AB2, AD2, AE2, AH2, AJ2, AK2, AL2, AM2, AP2, AR2, AS2, AU2, BB2, BD2, BE2, BH2, BJ2, BK2, BL2, BM2, BP2, BR2, BS2, BU2, CB2, CK2, CL2, CM2, CR2, CS2, CU2, DD2, DE2, DH2, DJ2, DK2, DL2, DM2, DP2, DR2, DS2, DU2.

SIGNATURES		DATE	digital	TITLE	MULTIPLE SERIAL
DRN	<i>[Signature]</i>	7/2/74			
CHK'D	<i>[Signature]</i>	7/2/74			
ENG.	<i>[Signature]</i>	7/2/74			
PROJ. ENG.	<i>[Signature]</i>	7/2/74			
PROD.	<i>[Signature]</i>	7/2/74			
SCALE	2/1		SIZE CODE	NUMBER	REV
SHT.	1 OF 1		D	UA	M8319-0-0
ETCH REV D FIRST USED ON B-DD-M8319-					

PARTS LIST

LINE	ITEM	DOCUMENT NUMBER	PART NUMBER	DESCRIPTION	QTY	PER VARIATION	REFERENCE DESIGNATOR
					00		
1	1	D-MD-5011605-0-0	5011605-00	M8319	1		
2	2		1000016-00	100.0 MMF 100V 5%200PPM MICA	1		C4
3	3		1000023-00	330.0 MMF 100V 5%200PPM MICA	8		C12-C15,C22-C25
4	4		1000024-00	470.0 MMF 100V 5%200PPM MICA	4		C37-C40
5	5		1005306-00	6.8MFD 35V 10% S.TANT	3		C1-C3
6	6		1005820-00	22.0 MMF 100V 5%200PPM MICA	6		C6-C11
7	7		1001610-01	.01 MFD50/100V +80-20% DISC	67		C41-C107
8	8		1109502-00	1N 4742 VZ= 12.0 10% 1W Y	4		D1-D4
9	9		1211164-04	SW,DIP 1P 1A 8POS	3		SW1-SW3
10	10		1209941-07	HEADER.100 50POS RT ANGLE	1		J1
11	11		1300195-00	33.0 .50 W 5.0 % CC	1		R134
12	12		1300219-00	68.0 .25 W 5.0 % CC	8		R55-R58,R84-R87
13	13		1300295-00	330.0 .25 W 5.0 % CC	1		R71
14	14		1300365-00	1.0 K .25 W 5.0 % CC	59		R7-R23,R25-R38,R40-R46,R88-R108
15	15		1300417-00	2.20 K .25 W 5.0 % CC	16		R59-R66,R124-R131
16	16		1300432-00	3.0 K .25 W 5.0 % CC	6		R1-R6
17	17		1300479-00	10.0 K .25 W 5.0 % CC	8		R47-R54
18	18		1300510-00	/REPLACED BY 13-13349-00	15		R109-R123
19	19		1301322-00	180.0 .25 W 5.0 % CC	8		R67-R70,R72-R75
20	20		1301423-00	6.80 K .25 W 5.0 % CC	4		R80-R83
21	21		1301874-00	5.60 K .25 W 5.0 % CC	4		R76-R79
22	22		1302253-00	27.0 .50 W 5.0 % CC	1		R135
23	23		1305653-00	22.0 1.0 W10.0 % CC	2		R132,R133
24	24		1509338-00	DEC6531B NPN 310MW SI 40 90 P	12		Q1-Q12
25	25		1503409-01	DEC6534B PNP 310MW SI 40 90 P	16		Q13-Q28
26	26		1811660-02	OSCILLATOR, XTAL 5.0688 MHZ	1		OSC1
27	27		1905547-00	7474 FF-D DUAL,EDGE TRIGG	13		E2,E3,E8,E15,E17,E48,E61,E69, E72,E76,E81,E87,E94
28	28		1905575-00	7400 NAND GATE-QUAD 2IN	3	CONT	E6,E54,E67
29	29		1905576-00	7410 NAND GATE-TRIPLE 3IN	3		E71,E75,E77

REVISION HISTORY		BASIC PART NO: M8319		DRN:	LARRY NARHI	DATE:	21-AUG-80	D I G I T A L			
ENG	ECO NUMBER	REV	SECTION A OF A	CHK'D:	KENT GLEEZEN	DATE:	21-AUG-80	TITLE PARTS LIST			
LN	INITIAL	E	SECTION.VARIATION INDEX	DES.ENG:	LARRY NARHI	DATE:	21-AUG-80	MULTIPLE SERIAL LINE UNIT			
	M8319-ML004	F	[A] 00	RESP.ENG.:	LARRY NARHI	DATE:	21-AUG-80	DOCUMENT NUMBER			
			[B]	MFG.ENG.:	TOM LARSEN	DATE:	21-AUG-80	SIZE	CODE	NUMBER	REV
			[C]	ASSEMBLY NUMBER:		TOP DOCUMENT NUMBER:		K	PL	M8319-0-DBP	F
			[D]	D-UA-M8319-0-0		B-DD-M8319-0-0				FILE NAME:	EDIT #
			[E]							Z1651F.PLS	6
			[F]								
			[G]								
			[H]								
			[I]								
			[J]								
			[K]								
			[L]								
			[M]								
			[N]								

"THIS DRAWING AND SPECIFICATIONS HEREIN, ARE THE PROPERTY OF DIGITAL EQUIPMENT CORPORATION AND SHALL NOT BE REPRODUCED OR COPIED OR USED IN WHOLE OR IN PART AS THE BASIS FOR THE MANUFACTURE OR SALE OF ITEMS WITHOUT WRITTEN PERMISSION. COPYRIGHT (C) 1980. DIGITAL EQUIPMENT CORPORATION "

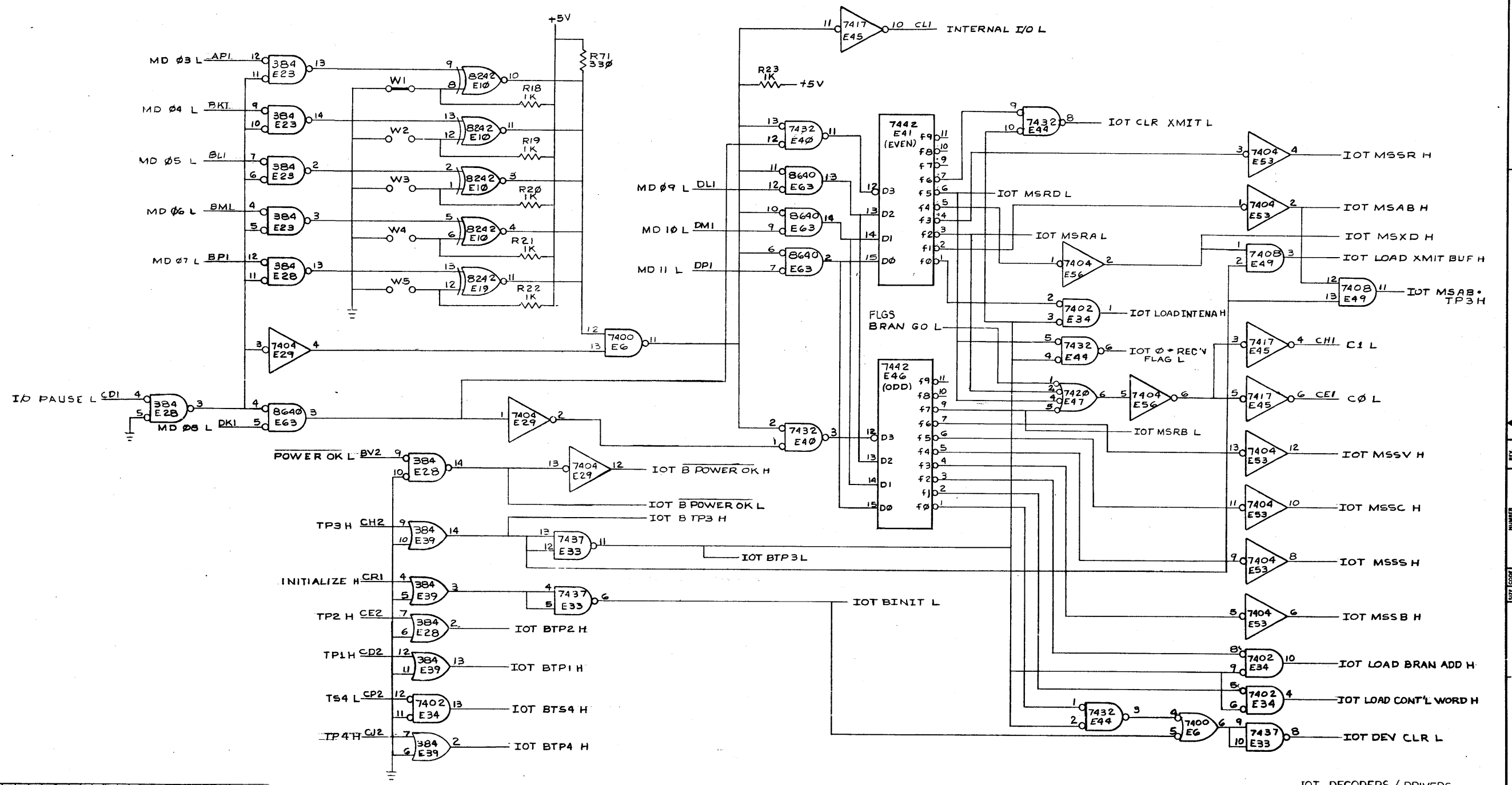
PARTS LIST

LINE ITEM	DOCUMENT NUMBER	PART NUMBER	DESCRIPTION	QTY PER VARIATION 00	REFERENCE DESIGNATOR
30	30	1905577-00	7420 NAND GATE-DUAL 4INPU	1	E47
31	31	1905828-00	7451 A-O-I GATE	2	E84,E96
32	32	1909004-00	DEC 7402 NOR GATE-QUAD 2IN	2	E1,E34
33	33	1909486-00	DEC 384 OR GATE-QUAD 2IN,UTI	3	E23,E28,E39
34	34	1909686-00	7404 INVERTER GATE-HEX 1I	6	E29,E53,E58,E90,E93,E105
35	35	1909705-00	DEC 8881 NAND GATE-QUAD 2IN O	6	E51,E64,E68,E78,E82,E83
36	36	1909712-00	DEC 8242 COMPARATOR-4BIT N,	2	E10,E19
37	37	1909929-00	7417 BUFFER GATE-HEX 1INP	2	E45,E62
38	38	1909934-00	8266 MUS 1 OF 2 (QUAD)	2	E37,E73
39	39	1909935-00	8235 MUX 1 OF 2 (QUAD)	3	E85,E86,E95
40	40	1910046-00	7442 DECODER-1 OF 10,BCD	2	E41,E46
41	41	1910091-00	DEC 7437 AND GATE-QUAD 2IN,BU	1	E33
42	42	1910155-00	DEC 7408 AND GATE,POS.QUAD 2I	8	E7,E9,E24,E43,E49,E59,E80,E88
43	43	1910322-00	DEC 1488L DRIVER,LINE,QUAD,EI	4	E98,E99,E101,E104
44	44	1910323-00	DEC 1489L RECEIVER,LINE,QUAD,	4	E97,E100,E102,E103
45	45	1910436-00	DEC 74123 ONE SHOT-DUAL,RETRIG	3	E74,E79,E92
46	46	1910454-00	DEC 9318 ENCODER, 8 INPUT PRI	2	E12,E36
47	47	1910459-01	UART,WSTRN DIG #TR1602A (1.5 STO	4	E5,E14,E18,E27
48	48	1910537-00	74511 AND GATE-TRIPLE 3INP	1	E21
49	49	1910552-00	745194 SHIFT REG.,4BIT RIGH	1	E11
50	50	1910651-00	DEC 74175 FF-D QUAD	7	E16,E25,E30,E42,E66,E70,E99
51	51	1910652-00	74174 FF-D HEX	2	E22,E26
52	52	1911116-00	DEC 8837 RECEIVER,BUS,HEX,UN	2	E35,E60
53	53	1911315-00	8234 MUX 1 OF 4	4	E20,E38,E50,E65
54	54	1911469-00	DEC 8640 RECEIVER,BUS,QUAD,U	5	E63,E106-E109
55	55	1911521-00	7432 OR GATE-QUAD 2IN, PO	5	E13,E40,E44,E55,E91
56	56	1911676-00	745139 DECODER-DUAL TWO-INP	1	E4
57	57	2112559-00	2812 32XB FIFO MEMORY	2	E31,E32
58	58	2112623-00	DUAL BAUD RATE GEN/PROG DIVIDER,	2	E57,E58
59	59	9009185-00	JUMPER, WIRE, INSULATED, BLACK B	1	W1
60	60	1216988-02	HANDLE,MODULE,HEX TWO EJECTORS	1	
61	61	9006732-00	EYELET, ROLLED FLANGE, .121 OD X	12	
62	62	9105740-55	WIRE(WRAP)30AWG UL1423	A/R	
63	63	1001765-00	.005 MFD 100V 20% Z5T DISC	11	C26-C36
64	64	5012303-00	5012303	4	BD1-BD4
65	65	1912858-00	LS221 ONE SHOT-DUAL,SCHMIT	1	E52
66	66	1000006-00	10.0 MMF 100V 5%200PPM MICA	1	C5

67 NOTE: ITEM #60 PART #1216988-02 IS REPLACING PART #1210711-02

D	I	G	I	T	A	L	TITLE	SECTION A	OF A	SIZE	CODE	DOCUMENT NUMBER	REV
							MULTIPLE SERIAL LINE UNIT			K	PL	M8319-0-DBP	F

"THIS DRAWING AND SPECIFICATIONS, HEREIN, ARE THE PROPERTY OF DIGITAL EQUIPMENT CORPORATION AND SHALL NOT BE REPRODUCED OR COPIED OR USED IN WHOLE OR IN PART AS THE BASIS FOR THE MANUFACTURE OR SALE OF ITEMS WITHOUT WRITTEN PERMISSION. COPYRIGHT © 1977, DIGITAL EQUIPMENT CORPORATION"

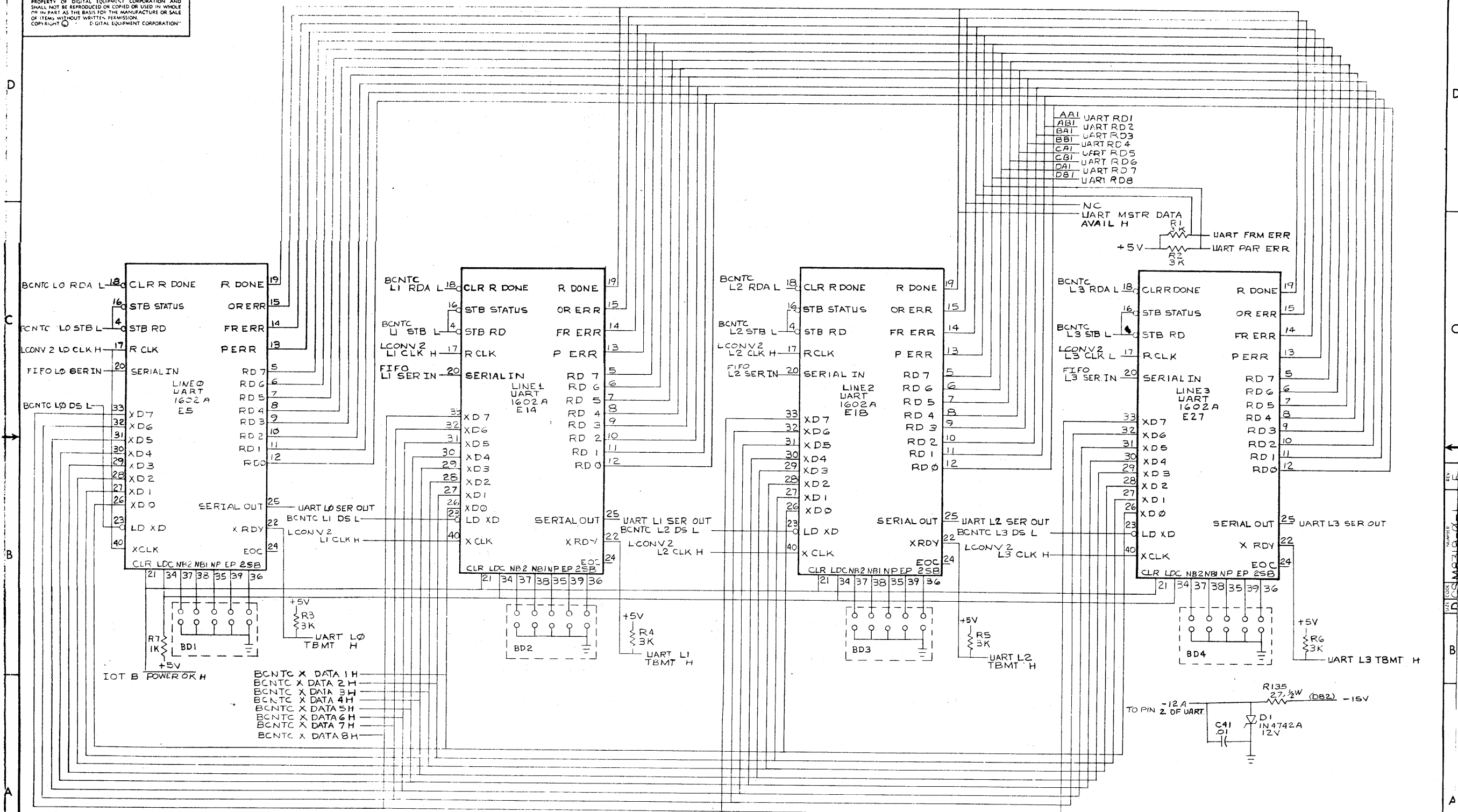


IOT DECODERS / DRIVERS

DRN <i>9/17/75</i>	FIRST USED ON	DIGITAL
CHKD <i>9/17/75</i>	KLBA	
ENG <i>9/17/75</i>	TITLE	
PROJ. ENG. <i>9/17/75</i>	MULTIPLE SERIAL LINE UNIT (IOT)	
PROD. <i>9/17/75</i>	NEXT HIGHER ASSY.	
B-DD-M8319-0	SIZE CODE	NUMBER
SCALE	D CS	M8319-0-1
SHEET 1	OF 10	DIST.

REV.	CHG.	NO.	DATE	BY	CHKD.
1					
2					
3					
4					
5					
6					
7					
8					

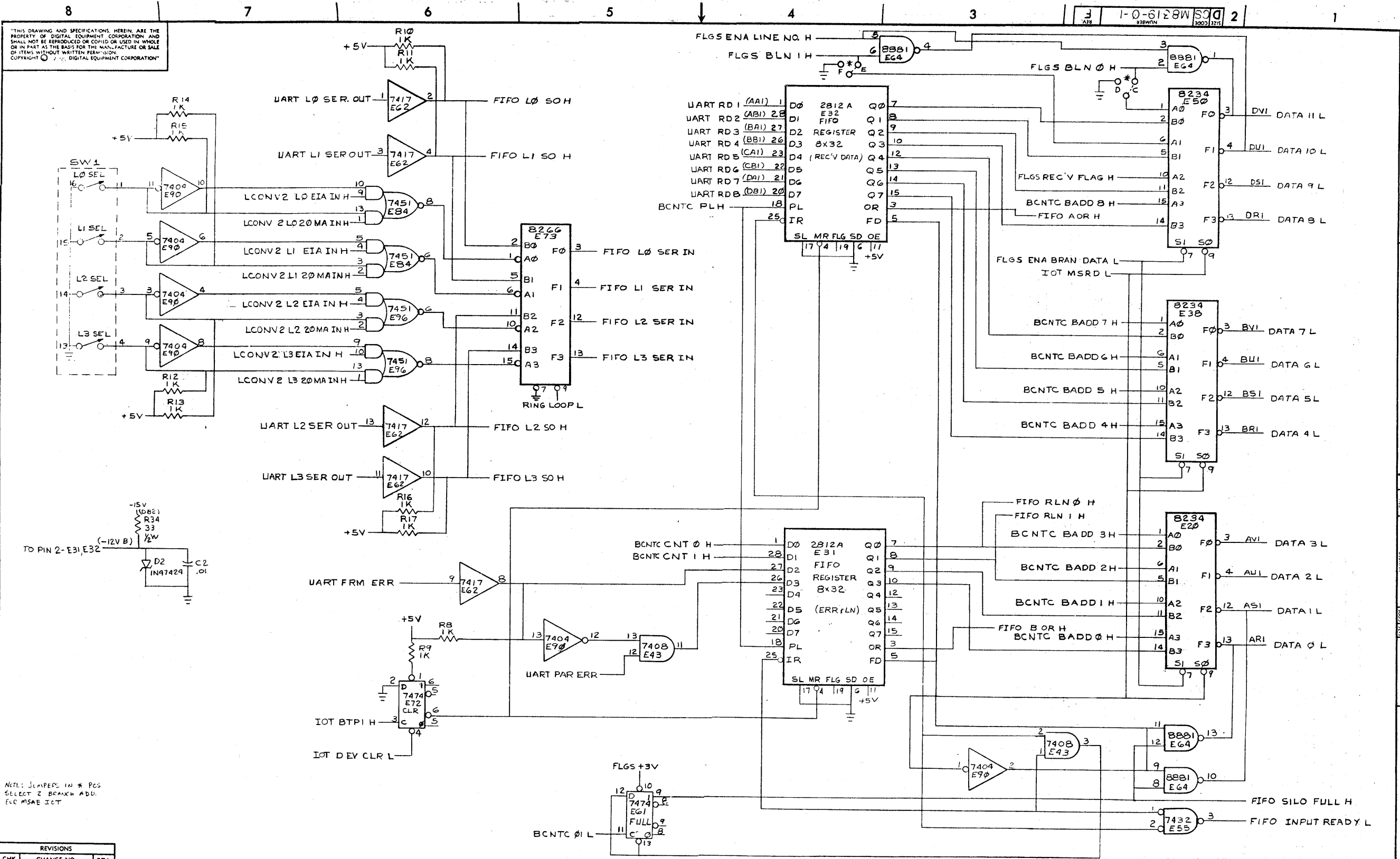
THIS DRAWING AND SPECIFICATIONS HEREIN ARE THE PROPERTY OF DIGITAL EQUIPMENT CORPORATION AND SHALL NOT BE REPRODUCED OR COPIED OR USED IN WHOLE OR IN PART AS THE BASIS FOR THE MANUFACTURE OR SALE OF ITEMS WITHOUT WRITTEN PERMISSION. COPYRIGHT © DIGITAL EQUIPMENT CORPORATION



REVISIONS		
CHK	CHANGE NO.	REV.

TITLE	UART REGISTERS MULTIPLE SERIAL LINE UNIT (UART)	SIZE CODE	NUMBER	REV.
SCALE	SHEET 2 OF 10	D CS	M8319-0-1	F

"THIS DRAWING AND SPECIFICATIONS HEREIN ARE THE PROPERTY OF DIGITAL EQUIPMENT CORPORATION AND SHALL NOT BE REPRODUCED OR COPIED OR USED IN WHOLE OR IN PART AS THE BASIS FOR THE MANUFACTURE OR SALE OF ITEMS WITHOUT WRITTEN PERMISSION OF DIGITAL EQUIPMENT CORPORATION."



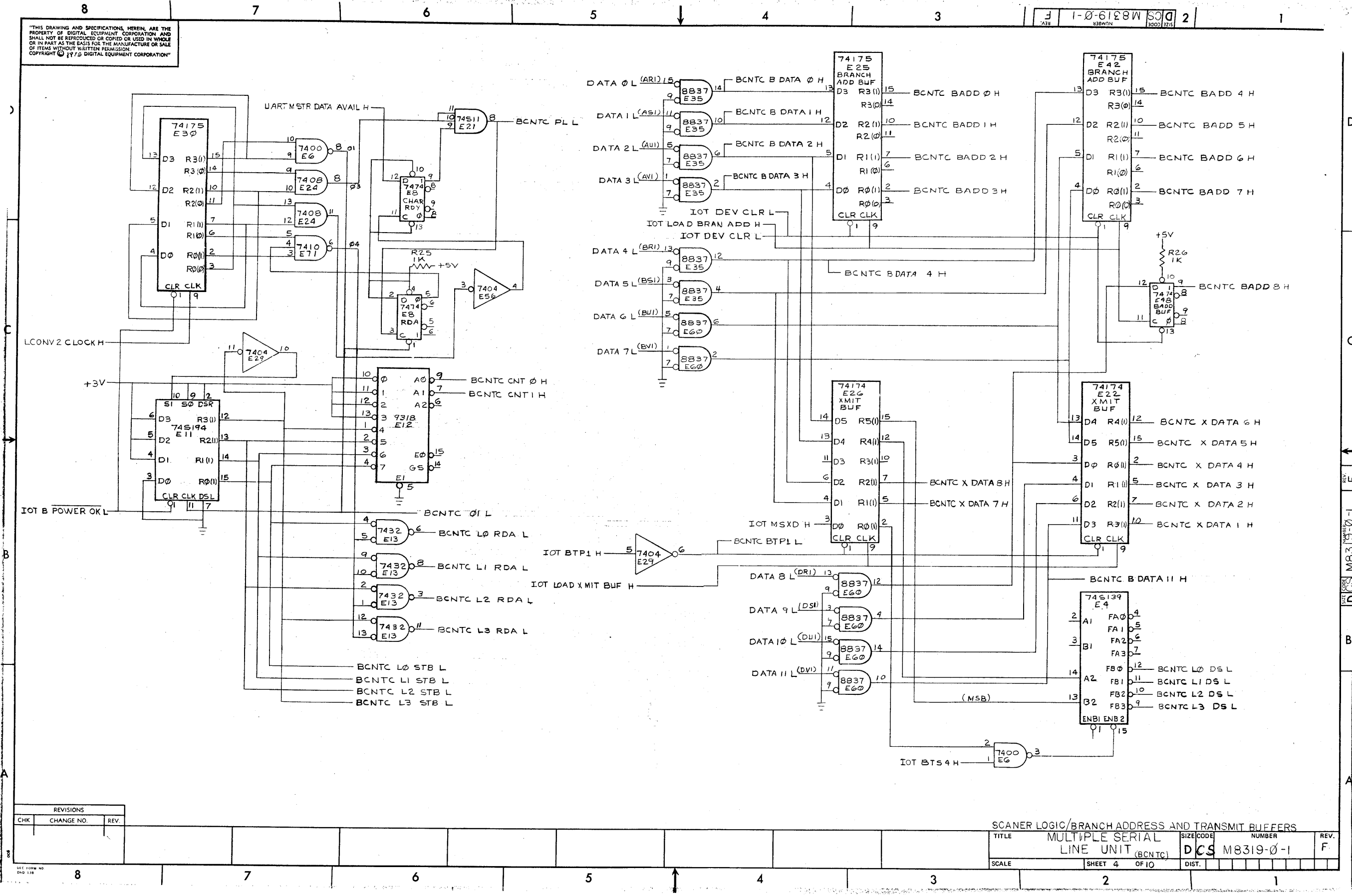
NOTE: JUMPERS IN \* PCB SELECT 2 BRANCH ADD. FOR MSAB ICT

REVISIONS		
CHK	CHANGE NO.	REV.

FIFO REGISTERS			
TITLE	SIZE/CODE	NUMBER	REV.
MULTIPLE SERIAL LINE UNIT (FIFO)	DCS M8319-0-1		F
SCALE	SHEET 3 OF 10	DIST.	

"THIS DRAWING AND SPECIFICATIONS HEREIN, ARE THE PROPERTY OF DIGITAL EQUIPMENT CORPORATION AND SHALL NOT BE REPRODUCED OR COPIED OR USED IN WHOLE OR IN PART AS THE BASIS FOR THE MANUFACTURE OR SALE OF ITEMS WITHOUT WRITTEN PERMISSION. COPYRIGHT © 1975 DIGITAL EQUIPMENT CORPORATION"

1-0-618W 2



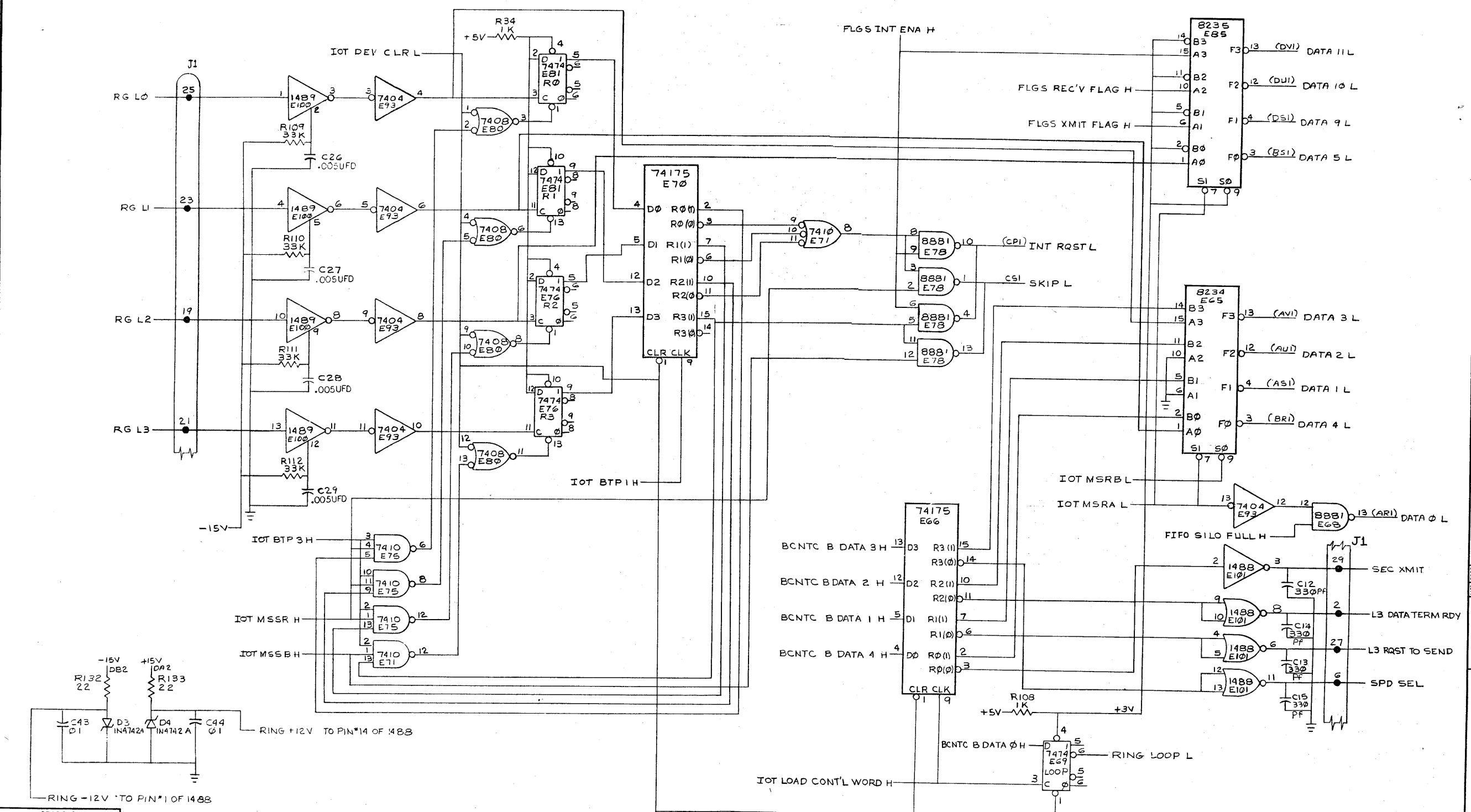
REVISIONS		
CHK	CHANGE NO.	REV.

SCANNER LOGIC/BRANCH ADDRESS AND TRANSMIT BUFFERS			
TITLE	MULTIPLE SERIAL LINE UNIT (BCNTC)	SIZE CODE	NUMBER
SCALE	SHEET 4 OF 10	DIST.	DCS M8319-0-1
			REV. F

DCS M8319-0-1



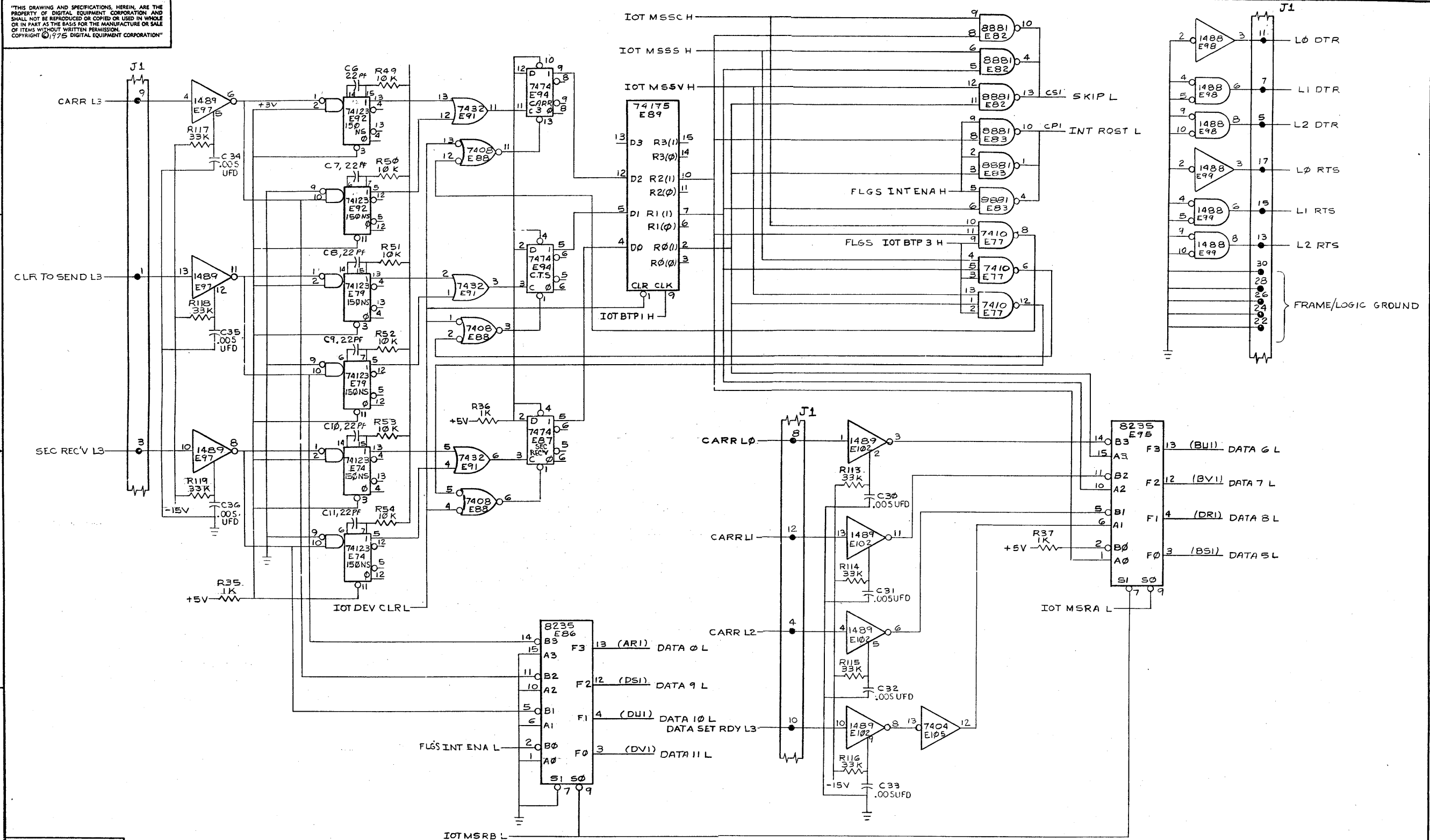
"THIS DRAWING AND SPECIFICATIONS, HEREIN, ARE THE PROPERTY OF DIGITAL EQUIPMENT CORPORATION AND SHALL NOT BE REPRODUCED OR COPIED OR USED IN WHOLE OR IN PART AS THE BASIS FOR THE MANUFACTURE OR SALE OF ITEMS WITHOUT WRITTEN PERMISSION. COPYRIGHT © 1973 DIGITAL EQUIPMENT CORPORATION"



REVISIONS		
CHK	CHANGE NO.	REV.

TITLE		RING FLIP FLOPS/PART STATUS A & B/CONTROL WORD & DRIVERS	
MULTIPLE SERIAL LINE UNIT (RING)		SIZE CODE	NUMBER
DCS M8319-0-1		REV.	F
SCALE	SHEET 6 OF 10	DIST.	

"THIS DRAWING AND SPECIFICATIONS, HEREIN, ARE THE PROPERTY OF DIGITAL EQUIPMENT CORPORATION AND SHALL NOT BE REPRODUCED OR COPIED OR USED IN WHOLE OR IN PART AS THE BASIS FOR THE MANUFACTURE OR SALE OF ITEMS WITHOUT WRITTEN PERMISSION. COPYRIGHT © 1975 DIGITAL EQUIPMENT CORPORATION"

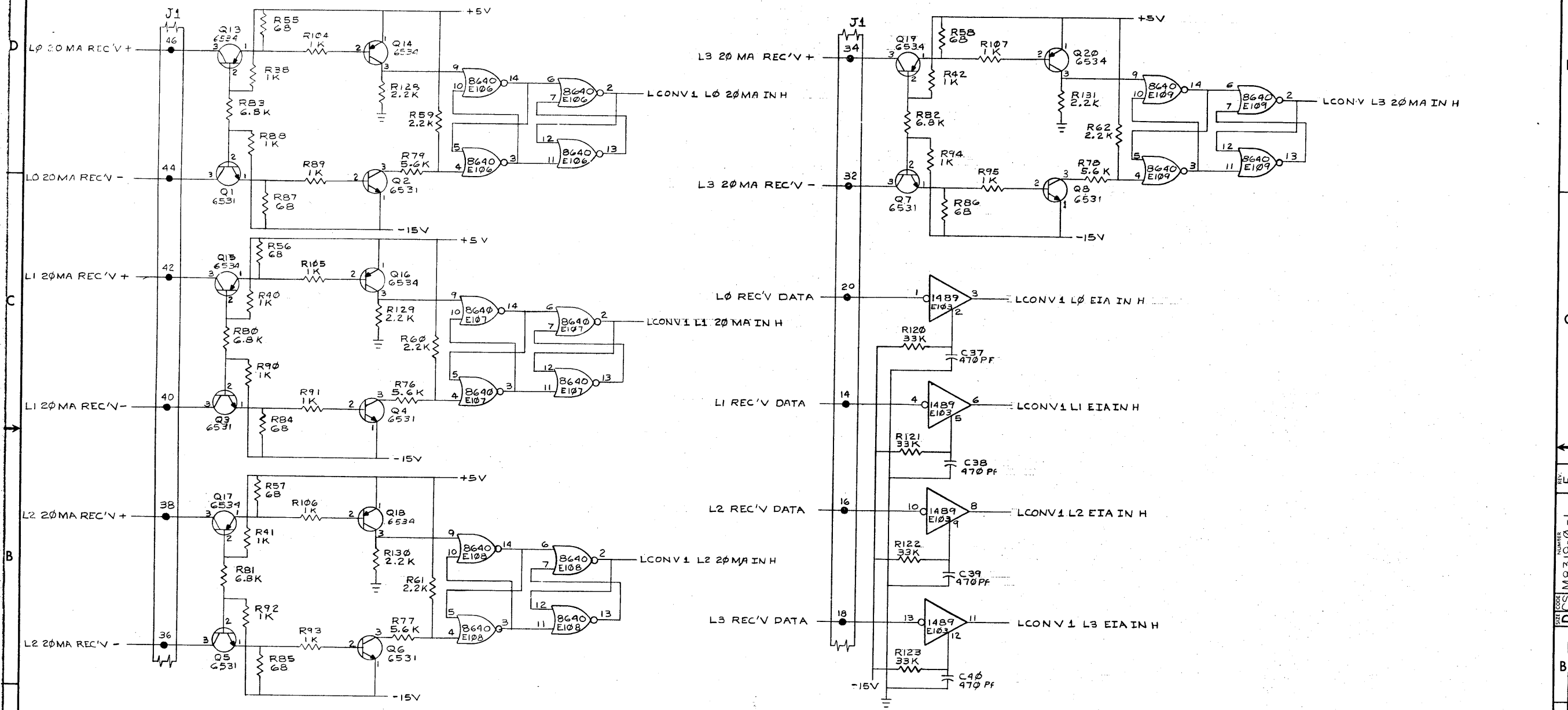


REVISIONS		
CHK	CHANGE NO.	REV.

TITLE		MODEM STATUS SIGNALS		SIZE CODE	NUMBER	REV.
MULTIPLE SERIAL LINE UNIT (MODM)		DCS		M8319-0-1	F	
SCALE	SHEET 7 OF 10	DIST.				

"THIS DRAWING AND SPECIFICATIONS, HEREIN, ARE THE PROPERTY OF DIGITAL EQUIPMENT CORPORATION, AND SHALL NOT BE REPRODUCED OR COPIED OR USED IN WHOLE OR IN PART AS THE BASIS FOR THE MANUFACTURE OR SALE OF ITEMS WITHOUT WRITTEN PERMISSION. COPYRIGHT © 1973 DIGITAL EQUIPMENT CORPORATION"

1-0-6188W [CS] M8319-0-1



REVISIONS		
CHK	CHANGE NO.	REV.

DATA RECEIVERS 20MA & EIA  
 TITLE MULTIPLE SERIAL LINE UNIT (LCONV 1)  
 SIZE CODE DCS NUMBER M8319-0-1 REV. F  
 SCALE SHEET 8 OF 10 DIST.

DEC FORM NO. 080 110

8

7

6

5

4

3

2

1



THIS DRAWING AND SPECIFICATIONS HEREIN ARE THE PROPERTY OF DIGITAL EQUIPMENT CORPORATION AND SHALL NOT BE REPRODUCED OR COPIED OR USED IN WHOLE OR IN PART AS THE BASIS FOR THE MANUFACTURE OR SALE OF ITEMS WITHOUT WRITTEN PERMISSION. COPYRIGHT © 1975 DIGITAL EQUIPMENT CORPORATION

1. S1-1 THRU S1-4 AND 0 CONTROL WHICH LEVEL CONVERTER IS CONNECTED TO THE SERIAL INPUT OF EACH UART WHEN A PARTICULAR SWITCH IS IN THE ON POSITION, THE EIA LEVEL CONVERTER IS CONNECTED. WHEN IN THE OFF POSITION, THE 20 MA LEVEL CONVERTER IS CONNECTED TO THE UART SERIAL. IN NOTE THAT IF THERE IS NO DEVICE CONNECTED TO A GIVEN PAIR OF 20 MA RECEIVE LEADS, THAT SWITCH CORRESPONDING TO THE OPEN LINE MUST BE LEFT IN THE ON POSITION. THE SERIAL OUTPUT OF THE UARTS ARE PERMANENTLY CONNECTED TO BOTH LEVEL CONVERTERS.

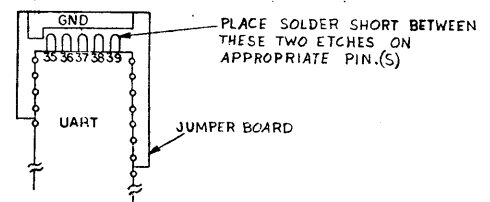
Table with 4 columns: Switch ID, Line, Position, and Description. Rows include S1-1 through S1-4 for lines 0-3.

2. S2 AND S3 CONTROL THE BAUD RATE FOR EACH LINE. S2 CONTROLS LINE 0 AND 1 AND S3 CONTROLS LINES 2 AND 3. NOTE THAT ALL SWITCHES ON S2 OR S3 OFF IS AN ILLEGAL CONFIGURATION. AS THE SELECTED BAUD RATE (19 2K) IS TOO HIGH FOR THE UARTS. THE FOLLOWING TABLE SHOWS THE SWITCH SETTINGS FOR SELECTING THE BAUD RATE FOR EACH OF THE FOUR LINES.

Table with 4 columns: L#, Switch Number, and Rate. It lists combinations of switches S2 and S3 for baud rates from 50 to 19,200.

\* THE MODULE WILL NOT OPERATE WITH THESE SWITCH SETTINGS.

3. THERE ARE 5 PINS ON EACH UART WHICH CONTROL CERTAIN FEATURES OF THE UART. THESE PINS (35-39) MAY BE OPEN OR GROUNDED. DEPENDING ON THE DESIRED OPERATING CONDITIONS OF EACH UART. TO GROUND A UART PIN, PLACE A SOLDER BRIDGE (SHORT) ACROSS THE APPROPRIATE ETCH ON THE JUMPER BOARD. THE DRAWING BELOW ILLUSTRATES A TYPICAL JUMPER BOARD ON A UART.



THE FOLLOWING TABLES DEFINE THE OPERATING CHARACTERISTICS OF ANY OF THE FOUR UARTS WITH JUMPER(S) OUT (PIN OPEN) AND JUMPER(S) IN (PIN GROUNDED).

Two tables: one for 'JUMPER' options (OUT/IN) and one for 'BITS/CHAR' settings (8, 7, 6, 5) for NB1 and NB2.

\* WITH SB JUMPER IN AND 5 BITS/CHAR SELECTED, UART PRODUCES 1.5 STOP BITS.

4. THERE ARE TWO JUMPERS ON THE M8319 THAT CONTROL BRANCH ADDRESSING FORMAT. NORMAL CONFIGURATION IS 8 BRANCH ADDRESSES. TO CHANGE TO 2 BRANCH ADDRESSES (1 FOR TRANSMIT / 1 FOR RECEIVE) MOVE THE TWO JUMPERS INTO THE POSITION SHOWN IN DOTTED LINES. ON THE BRANCH JUMPER DETAIL DRAWING.

5. THE MODULE (M8319) AS IT IS SHIPPED FROM THE FACTORY, IS JUMPED FOR THE FOLLOWING CONFIGURATION:

Table with 3 columns: JUMPER(S), IN / OUT, and CONFIGURATION. Lists settings for EP, NB1, NB2, 2 SB, NP, BRAN, and W1-W5.

NOTE. THAT EVEN THOUGH THE EP JUMPER IS OUT, INDICATING EVEN PARITY, THE NP JUMPER OUT OVERRIDES THE EP JUMPER, DISABLING THE PARITY CIRCUITS IN THE UARTS.

6. JUMPERS W1 THRU W5 MAY BE CONFIGURED PER TABLE TO SELECT IOT SERVICE CODE 00 THRU 76. THE JUMPERS ARE LOCATED IN THE LOWER RIGHT-HAND CORNER OF THE MODULE, AS VIEWED WITH HANDLE UP, SIDE 1 FACING UP.

Two tables for IOT service codes. The first table shows configurations for MD3, 4, 5. The second table shows configurations for MD6, 7.

EXAMPLE: TO SELECT IOT 34, JUMPERS W2, W3, AND W4 WOULD BE IN. JUMPERS W1 AND W5 WOULD BE OUT.

NOTE: IOT DEVICE CODES BELOW 30 SHOULD NOT BE USED UNLESS IT IS KNOWN FOR CERTAIN THAT NO IOT CONFLICTS WILL OCCUR. SEE DRAWING D-UA-M8319-0-0 FOR JUMPER LOCATIONS.

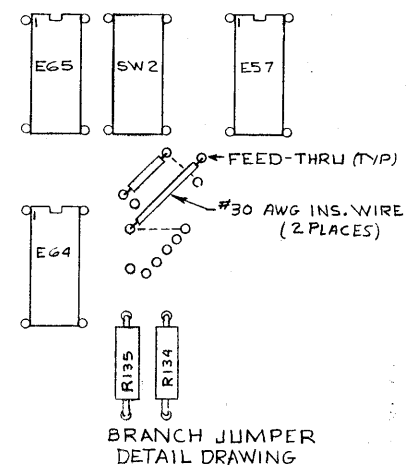
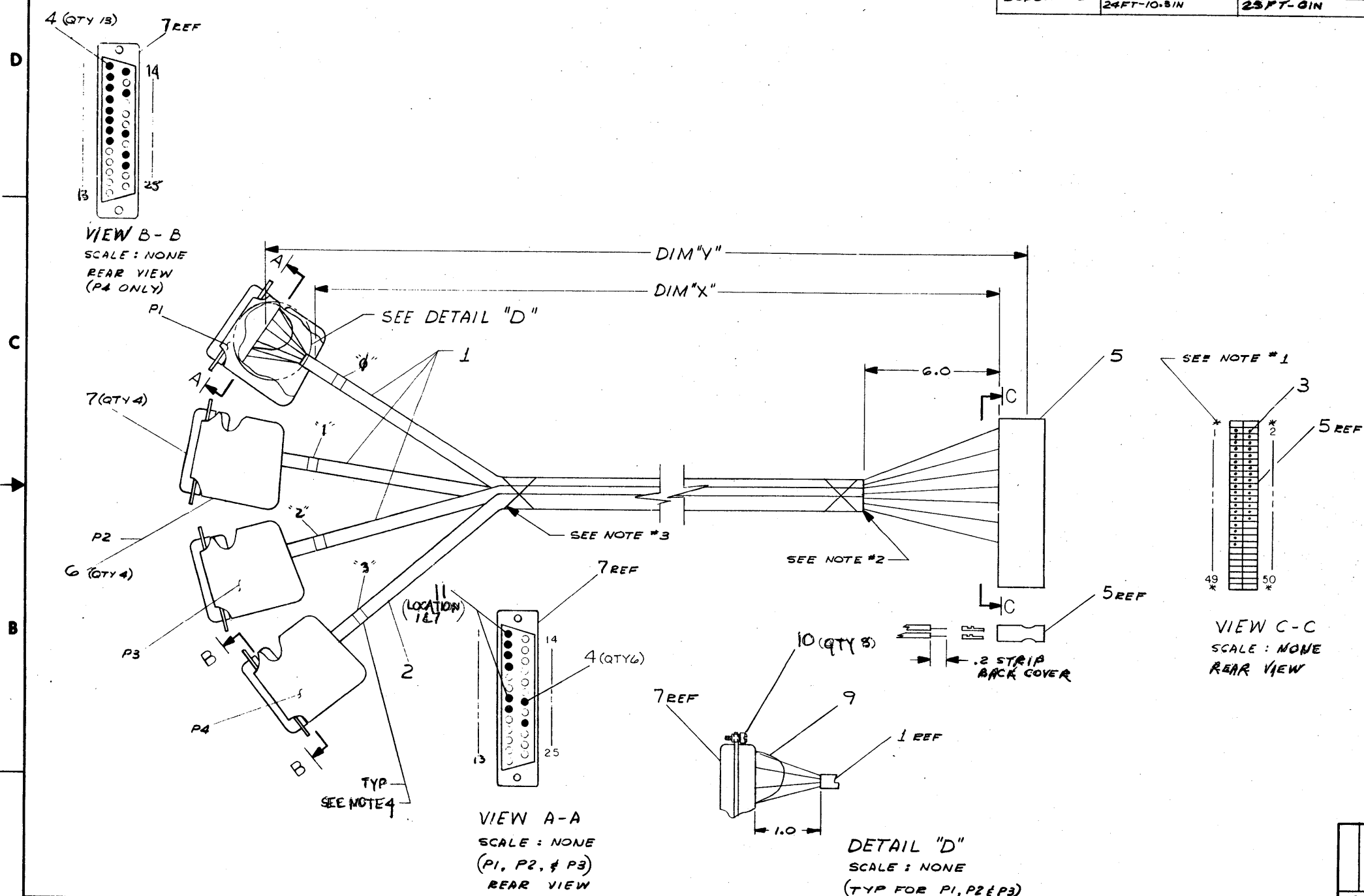


Table with 3 columns: CHK, CHANGE NO., REV.

THIS DRAWING AND SPECIFICATIONS HEREIN ARE THE PROPERTY OF DIGITAL EQUIPMENT CORPORATION AND SHALL NOT BE REPRODUCED OR COPIED OR USED IN WHOLE OR IN PART AS THE BASIS FOR THE MANUFACTURE OR SALE OF ITEMS WITHOUT WRITTEN PERMISSION. COPYRIGHT © 1975 DIGITAL EQUIPMENT CORPORATION

LEGEND		
NUMBER	VARIATION	
BC03W-25	DIM "X" VARIATION 24 FT-10.8 IN	DIM "Y" (PRECUT) REF 25 FT-0 IN

- NOTES:**
- \* DENOTES CAVITIES NOT USED OR DESIGNATED BY NUMBERS
  - ALL UNUSED WIRES TO BE CUT AT BOTH ENDS OF CABLE JACKET
  - CABLE TIES (ITEM #8) TO BE USED APPROX EVERY 3.0 IN. WHEN NECESSARY
  - CABLE TO BE IDENTIFIED USING "BRADY MARKERS" OR OTHER SUITABLE COMPONENT MARKER.



VIEW B-B  
SCALE: NONE  
REAR VIEW  
(P4 ONLY)

VIEW A-A  
SCALE: NONE  
(P1, P2, & P3)  
REAR VIEW

DETAIL "D"  
SCALE: NONE  
(TYP FOR P1, P2 & P3)

VIEW C-C  
SCALE: NONE  
REAR VIEW

DESCRIPTION	DWG. PART NO.	ITEM NO.
6 PIN CONTACT, 16 AWG	1210493-07	11
8 MALE SCREW RETAINER	9009722	10
45 AWG WIRE #22 AWG (BLK)	9107550-00	9
15 CABLE TIES	9007550	8
4 SHELL & INSERT	1210493-01	7
4 HOOD & STRAIN RELIEF	1210493-50	6
1 CONNECTOR	1210918-10	5
31 PIN CONTACT	1210493-05	4
34 SOCKET CRIMP	1210059-05	3
25 FT CABLE (15 COND)	9107672	2
75 FT CABLE (10 COND)	9107623	1

REV.	DESCRIPTION	DATE	BY	CHKD
1	ISSUED FOR MANUFACTURE	10/17/75	J. L. MARY	J. L. MARY
2	REVISED TO ADD CABLE TIES	11/13/75	J. L. MARY	J. L. MARY
3	REVISED TO ADD HOOD & STRAIN RELIEF	12/1/75	J. L. MARY	J. L. MARY
4	REVISED TO ADD SHELL & INSERT	12/1/75	J. L. MARY	J. L. MARY
5	REVISED TO ADD SOCKET CRIMP	12/1/75	J. L. MARY	J. L. MARY
6	REVISED TO ADD PIN CONTACT	12/1/75	J. L. MARY	J. L. MARY
7	REVISED TO ADD MALE SCREW RETAINER	12/1/75	J. L. MARY	J. L. MARY
8	REVISED TO ADD WIRE	12/1/75	J. L. MARY	J. L. MARY

THIRD ANGLE PROJECTION

REMOVE BURRS AND BREAK SHARP CORNERS

DO NOT SCALE DWG

MATERIAL SEE PARTS LIST

FINISH

UNLESS OTHERWISE SPECIFIED DIMENSIONS ARE IN INCHES

ANGLES	CLASS OF ACCURACY	NOMINAL DIMENSION RANGE INCHES
50° 30'	1	0.000 - 0.009
	2	0.010 - 0.024
	3	0.025 - 0.049
	4	0.050 - 0.124
	5	0.125 - 0.249
	6	0.250 - 0.499
	7	0.500 - 0.999
	8	1.000 - 4.999
	9	5.000 - 9.999
	10	10.000 - 49.999
	11	50.000 - 99.999
	12	100.000 - 499.999
	13	500.000 - 999.999
	14	1000.000 - 4999.999
	15	5000.000 - 9999.999
	16	10000.000 - 49999.999
	17	50000.000 - 99999.999
	18	100000.000 - 499999.999
	19	500000.000 - 999999.999
	20	1000000.000 - 4999999.999
	21	5000000.000 - 9999999.999
	22	10000000.000 - 49999999.999
	23	50000000.000 - 99999999.999
	24	100000000.000 - 499999999.999
	25	500000000.000 - 999999999.999
	26	1000000000.000 - 4999999999.999
	27	5000000000.000 - 9999999999.999
	28	10000000000.000 - 49999999999.999
	29	50000000000.000 - 99999999999.999
	30	100000000000.000 - 499999999999.999
	31	500000000000.000 - 999999999999.999
	32	1000000000000.000 - 4999999999999.999
	33	5000000000000.000 - 9999999999999.999
	34	10000000000000.000 - 49999999999999.999
	35	50000000000000.000 - 99999999999999.999
	36	100000000000000.000 - 499999999999999.999
	37	500000000000000.000 - 999999999999999.999
	38	1000000000000000.000 - 4999999999999999.999
	39	5000000000000000.000 - 9999999999999999.999
	40	10000000000000000.000 - 49999999999999999.999
	41	50000000000000000.000 - 99999999999999999.999
	42	100000000000000000.000 - 499999999999999999.999
	43	500000000000000000.000 - 999999999999999999.999
	44	1000000000000000000.000 - 4999999999999999999.999
	45	5000000000000000000.000 - 9999999999999999999.999
	46	10000000000000000000.000 - 49999999999999999999.999
	47	50000000000000000000.000 - 99999999999999999999.999
	48	100000000000000000000.000 - 499999999999999999999.999
	49	500000000000000000000.000 - 999999999999999999999.999
	50	1000000000000000000000.000 - 4999999999999999999999.999

QUANTITY & VARIATION

DRN: J. L. MARY 10/17/75

CHK: J. L. MARY 10/17/75

ENGR: J. L. MARY 10/17/75

PROL. ENG: J. L. MARY 10/17/75

PROD. ENG: J. L. MARY 10/17/75

NEXT HIGHER ASSY.

B-DD-KL8A-0

SIZE CODE D IA

NUMBER BC03W-0-0

REV. B

SHEET 1 OF 2

DIST.

8

7

6

5

4

3

SIZE CODE DIA BC08W-0-0 2

1

"THIS DRAWING AND SPECIFICATIONS HEREIN ARE THE PROPERTY OF DIGITAL EQUIPMENT CORPORATION AND SHALL NOT BE REPRODUCED OR COPIED OR USED IN WHOLE OR IN PART AS THE BASIS FOR THE MANUFACTURE OR SALE OF ITEMS WITHOUT WRITTEN PERMISSION. COPYRIGHT © 1975 DIGITAL EQUIPMENT CORPORATION"

WIRE TABLE

ITEM NO.	AWG	COLOR	FROM		TO		WIRE LENGTH
			CONNECTION	WITH	CONNECTION	WITH	
1	22	BLK	P1-1	11	P5-30	3	
0		BLK			P1-7	11	1.5 IN.
1		BRN	P1-2	4	P5-37	3	
1		RED	P1-3		P5-20	3	
		ORN	P1-4		P5-17	3	
		YEL	P1-8		P5-8	3	
		GRN	P1-20		P5-11	3	
		BLU	P1-22	4	P5-25	3	
1		BLK	P2-1	11	P5-28	3	
9		BLK			P2-7	11	1.5 IN.
1		BRN	P2-2	4	P5-35	3	
		RED	P2-3		P5-14	3	
		ORN	P2-4		P5-15	3	
		YEL	P2-8		P5-12	3	
		GRN	P2-20		P5-7	3	
		BLU	P2-22	4	P5-23	3	
1		BLK			P5-26	3	
9		BLK	P3-1	11	P3-7	11	1.5 IN.
1		BRN	P3-2	4	P5-31	3	
		RED	P3-3		P5-16		
		ORN	P3-4		P5-13		
		YEL	P3-8		P5-4		
		GRN	P3-20		P5-5		
1		BLU	P3-22		P5-19		
2		BLK	P4-1		P5-24		
		ORN	P4-2		P5-33		
		WHT	P4-3		P5-18		
		BLU/WHT	P4-4		P5-27		
		GRN/WHT	P4-5		P5-1		
		RED/WHT	P4-6		P5-10		
		BLK/WHT	P4-7		P5-22		
		RED/BLK	P4-8		P5-9		
		ORN/BLK	P4-14		P5-29		
		GRN/BLK	P4-16		P5-3		
		BLU/BLK	P4-20		P5-2		
		WHT/BLK	P4-22		P5-21		
2	22	BLU	P4-23	4	P5-6	3	

REVISIONS		
CHK	CHANGE NO.	REV.

DEC FORM NO.

7

6

5

4

3

2

1

TITLE CABLE ASSY  
BC08W  
SCALE --- SHEET 2 OF 2  
SIZE CODE DIA BC08W-0-0  
NUMBER  
REV. B

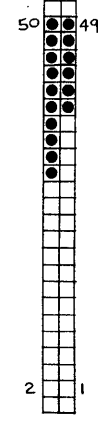
REV. B  
NUMBER  
DIA BC08W-0-0

"THIS DRAWING AND SPECIFICATIONS, HEREIN, ARE THE PROPERTY OF DIGITAL EQUIPMENT CORPORATION AND SHALL NOT BE REPRODUCED OR COPIED OR USED IN WHOLE OR IN PART AS THE BASIS FOR THE MANUFACTURE OR SALE OF ITEMS WITHOUT WRITTEN PERMISSION. COPYRIGHT © 1975, DIGITAL EQUIPMENT CORPORATION"

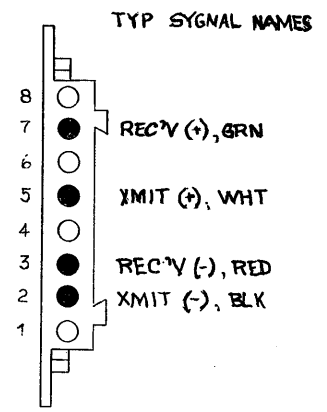
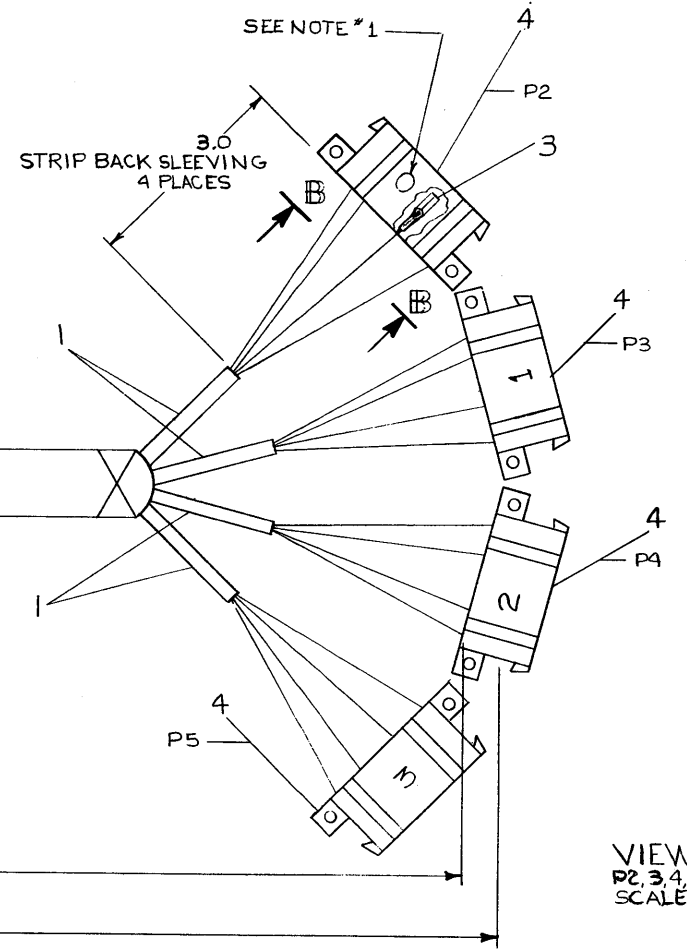
WIRE TABLE				
ITEM NO.	DESCRIPTION	FROM	TO	
NO.	AWG	COLOR	CONN	CONN
1	#22	BLK	P1-49	P2-2
		RED	P1-44	P2-3
		WHT	P1-47	P2-5
		GRN	P1-46	P2-7
		BLK	P1-45	P3-2
		RED	P1-40	P3-3
		WHT	P1-43	P3-5
		GRN	P1-42	P3-7
		BLK	P1-41	P4-2
		RED	P1-36	P4-3
		WHT	P1-39	P4-5
		GRN	P1-38	P4-7
		BLK	P1-48	P5-2
		RED	P1-32	P5-3
		WHT	P1-50	P5-5
		GRN	P1-34	P5-7

LEGEND		
NO.	DIM "X" VARIATION	DIM "Y" PRECUT
BC08X-06	6 FT	6 FT 9 IN. ± 2 IN
BC08X-02	2 FT	2 FT 9 IN. ± 2 IN

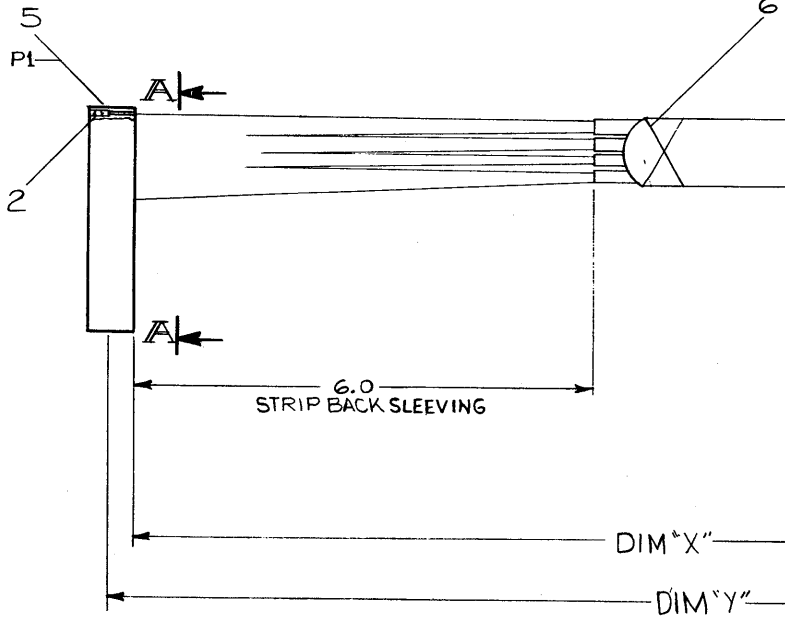
NOTES:  
1 COMPONENT TO BE LABELED WITH COMPONENT IDENTIFIERS, USING BRADY MARKERS



VIEW A-A  
SCALE; NONE



VIEW B-B  
P2, 3, 4, & 5  
SCALE; 2/1



DESCRIPTION	DWG. PART NO.	ITEM NO.
AVR MARKER, TERMINAL	9008356-01	7
4 CABLE TIE	9107880	6
1 HOUSING, 54 CAVITY	1210918-10	5
4 CONN, 8 PIN	1209340-00	4
16 SOCKET	1209379-03	3
22 PIN, (REEL)	1210089-06	2
24 CABLE 4 COND	9107706	1

UNLESS OTHERWISE SPECIFIED DIMENSIONS ARE IN INCHES		NOMINAL DIMENSION RANGE INCHES				
ANGLES 30° 30'	CLASS OF ACCURACY (CHECK ONE)	OVER		UNDER		
		TO	TO	TO	TO	
SURFACE QUALITY IN	MEDIUM	±.004	±.006	±.012	±.016	±.024
	PREFERRED	±.012	±.016	±.025	±.04	±.063

THIRD ANGLE PROJECTION	DRN. <i>[Signature]</i>	FIRST USED ON	KL8A
REMOVE BURRS AND BREAK SHARP CORNERS	CHK'D. <i>[Signature]</i>	TITLE	CABLE
DO NOT SCALE DWG	ENG. <i>[Signature]</i>		50 PIN TO 4-8 PIN
MATERIAL	PROJ. ENG. <i>[Signature]</i>		
FINISH	PROD. <i>[Signature]</i>		
	NEXT HIGHER ASSY.		
	B-DD-KL8A-0	SIZE CODE	D IA
	SCALE 1/1	NUMBER	BC08X-0-0
	SHEET 1 OF 1	REV	B

REV.	CHANGE NO.	DATE	BY	CHK'D.
A	1	21 SEPT 76	L. NARHI	L. NARHI
B	2	1 OCT 76	L. NARHI	L. NARHI
C	3	30 APR 77	L. NARHI	L. NARHI
D	4	1 MAY 77	L. NARHI	L. NARHI

SEC FORM NO. 100-C

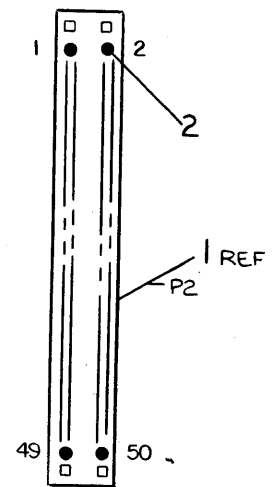
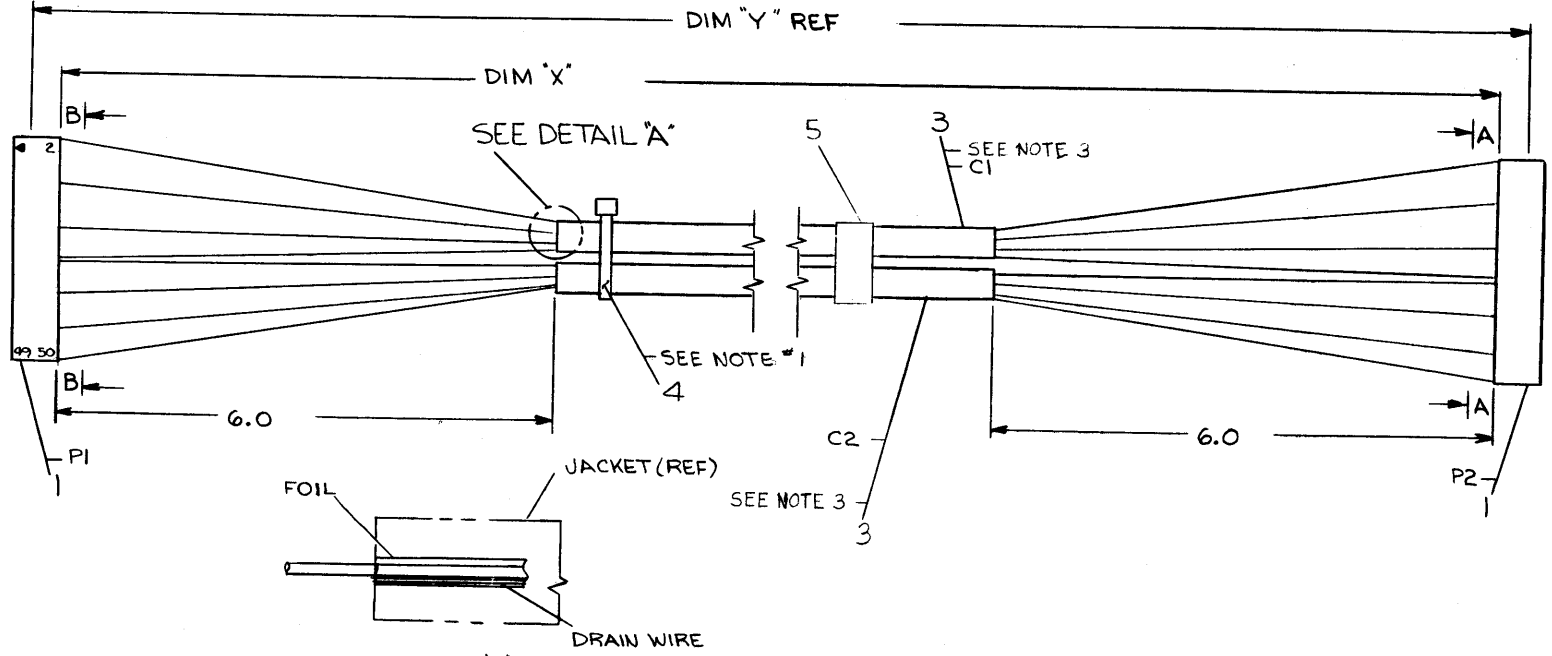
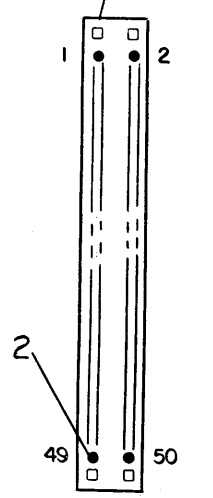
THIS DRAWING AND SPECIFICATIONS HEREIN ARE THE PROPERTY OF DIGITAL EQUIPMENT CORPORATION AND SHALL NOT BE REPRODUCED OR COPIED OR USED IN WHOLE OR IN PART AS THE BASIS FOR THE MANUFACTURE OR SALE OF ITEMS WITHOUT WRITTEN PERMISSION. COPYRIGHT © 1975 DIGITAL EQUIPMENT CORPORATION

ITEM NO	DESCRIPTION		FROM		TO		REMARKS
	AWG	COLOR	CONNECTION	WITH	CONNECTION	WITH	
3	26	BLK/ORN	PI-1	2	P2-2	2	C1
		BRN/RED	PI-2	2	P2-1	2	
		BRN/WHT	PI-3	2	P2-4	2	
		RED/BRN	PI-4	2	P2-3	2	
		RED/ORN	PI-5	2	P2-6	2	
		RED/BLU	PI-6	2	P2-5	2	
		RED/GRY	PI-7	2	P2-8	2	
		ORN/BLK	PI-8	2	P2-7	2	
		ORN/RED	PI-9	2	P2-10	2	
		ORN/WHT	PI-10	2	P2-9	2	
		GRN/BLK	PI-11	2	P2-12	2	
		GRN/WHT	PI-12	2	P2-11	2	
		BLU/BLK	PI-13	2	P2-14	2	
		BLU/RED	PI-14	2	P2-13	2	
		BLU/WHT	PI-15	2	P2-16	2	
		GRY/RED	PI-16	2	P2-15	2	
		GRY/WHT	PI-17	2	P2-18	2	
		WHT/GRY	PI-18	2	P2-17	2	
		WHT/BRN	PI-19	2	P2-20	2	
		WHT/ORN	PI-20	2	P2-19	2	
		WHT/GRN	PI-21	2	P2-22	2	
		GRY/GRN	PI-22	2	P2-21	2	
		WHT/BLU	PI-23	2	P2-24	2	
		GRY	PI-24	2	P2-23	2	
3	26	BLK/BLU	PI-30	2	P2-29	2	C1

ITEM NO	DESCRIPTION		FROM		TO		REMARKS
	AWG	COLOR	CONNECTION	WITH	CONNECTION	WITH	
3	26	BLK/ORN	PI-25	2	P2-26	2	C2
		GRY/GRN	PI-26	2	P2-25	2	
		BLK/BLU	PI-27	2	P2-28	2	
		GRAY	PI-28	2	P2-27	2	
		BRN/RED	PI-29	2	P2-30	2	
		BRN/WHT	PI-31	2	P2-32	2	
		RED/BRN	PI-32	2	P2-31	2	
		RED/ORN	PI-33	2	P2-34	2	
		RED/BLU	PI-34	2	P2-33	2	
		RED/GRY	PI-35	2	P2-36	2	
		ORN/BLK	PI-36	2	P2-35	2	
		ORN/RED	PI-37	2	P2-38	2	
		ORN/WHT	PI-38	2	P2-37	2	
		GRN/BLK	PI-39	2	P2-40	2	
		GRN/WHT	PI-40	2	P2-39	2	
		BLU/BLK	PI-41	2	P2-42	2	
		BLU/RED	PI-42	2	P2-41	2	
		BLU/WHT	PI-43	2	P2-44	2	
		GRY/RED	PI-44	2	P2-43	2	
		GRY/WHT	PI-45	2	P2-46	2	
		WHT/GRY	PI-46	2	P2-45	2	
		WHT/BRN	PI-47	2	P2-48	2	
		WHT/ORN	PI-48	2	P2-47	2	
		WHT/GRN	PI-49	2	P2-50	2	
		WHT/BLU	PI-50	2	P2-49	2	

- NOTES:
- EVENLY SPACE TIE WRAPS (ITEM # 4) OVER GRY JACKET OF C1 & C2 (CABLE, 25 COND) ITEM # 3.
  - CUT BACK DRAIN WIRES AND FOIL IN C1 & C2 THAT COMES WITH GRY AND GRY/GRN WIRES TO GRY JACKET OF ITEM # 3 (CABLE 25 COND) BOTH ENDS.
  - IN BC08Y-IF, COMPLETELY REMOVE GRAY JACKET AND FOIL FROM CABLE BEFORE ATTACHING TIEWRAPS, THUS ASSURING MAXIMUM FLEXIBILITY.

LEGEND			
NUMBER	DIM 'X' VARIATION	DIM 'Y' (PRE CUT) REF	TOL.
BC08Y-10	10.0 FT	10 FT .8 IN	±2.0 IN
BC08Y-05	5.0 FT	5 FT .8 IN	±2.0 IN
BC08Y-1F	1 FT 6 IN	20 IN	±1.0 IN



REV.	CHG.	BY	DATE
1	BC08Y-00001	A	10-27-75
2	BC08Y-00001	A	11-11-75
3	BC08Y-00001	A	11-11-75
4	BC08Y-00001	A	11-11-75
5	BC08Y-00001	A	11-11-75
6	BC08Y-00001	A	11-11-75
7	BC08Y-00001	A	11-11-75
8	BC08Y-00001	A	11-11-75

QTY	DESCRIPTION	DWG. PART NO.	ITEM NO.
1	CABLE, CABLE	3616073-00	5
6	TIE, CABLE	9007880	4
A/R	CABLE, 25 COND	9107736	3
100	SOCKET, CRIMP	1210089-05	2
2	HOUSING, TERMINATION	1210918-10	1

ANGLES	CLASS OF ACCURACY	NOMINAL DIMENSION RANGE INCHES				
		0 TO .25	.25 TO .50	.50 TO 1.00	1.00 TO 2.00	2.00 TO 4.00
30°	MEDIUM	±.004	±.006	±.012	±.018	±.024
45°	PREFERRED	±.008	±.012	±.020	±.030	±.040

THIRD ANGLE PROJECTION

REMOVE BURRS AND BREAK SHARP CORNERS

DO NOT SCALE DWG

MATERIAL SEE PARTS LIST

FINISH: —

DRN: G. King 5-27-75

CHK: G. King 6-4-75

ENG: G. King 6-4-75

PROJ. ENG: G. King 6-4-75

PROD: G. King 6-4-75

FIRST USED ON: H326

TITLE: CABLE ASSY (BC08Y)

SIZE CODE: B-DD-KL8A-0

SCALE: 1/1

SHEET: 2 OF 2

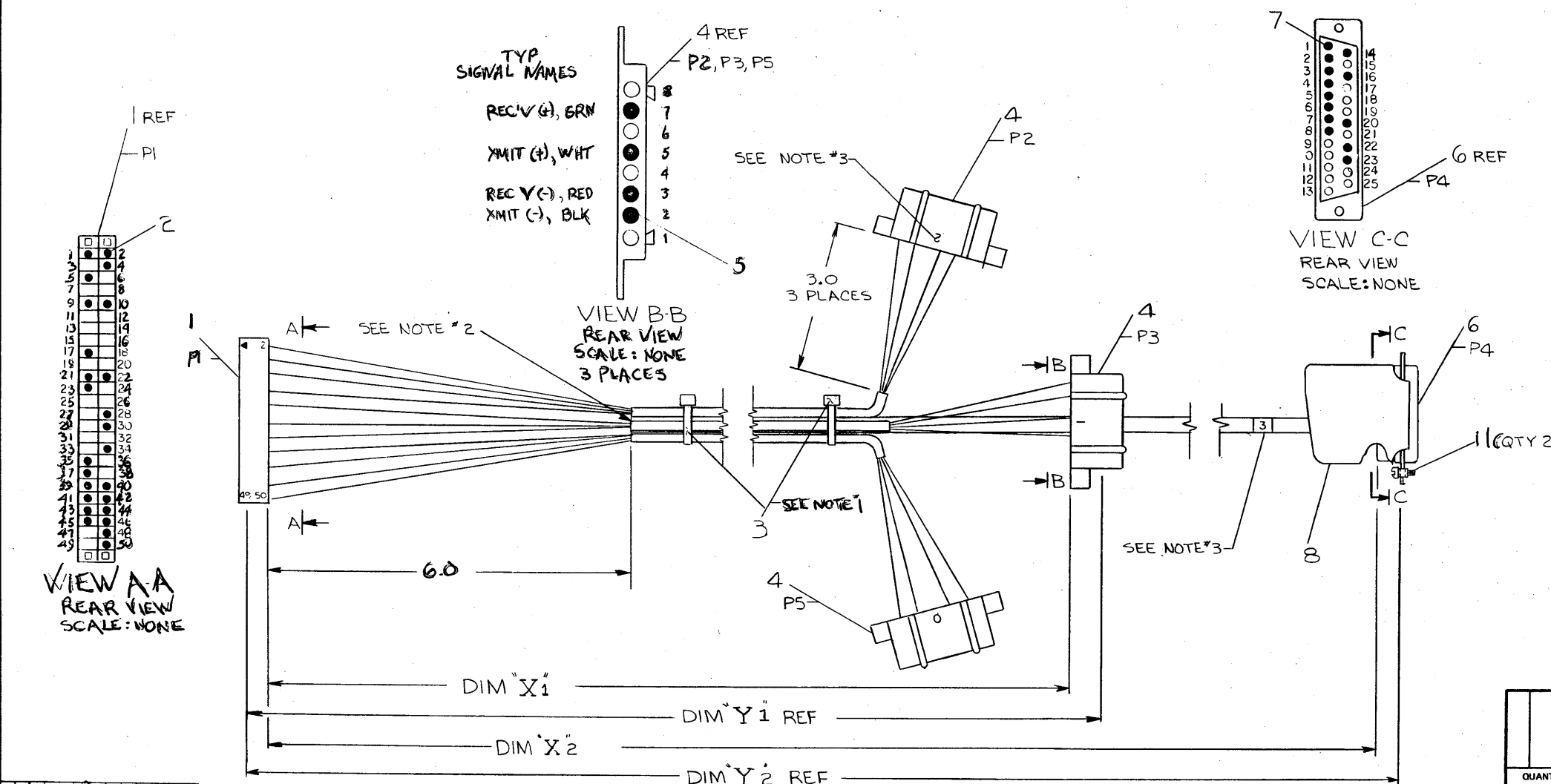
DIST.:

THIS DRAWING AND SPECIFICATIONS HEREIN ARE THE PROPERTY OF DIGITAL EQUIPMENT CORPORATION AND SHALL NOT BE REPRODUCED OR COPIED OR USED IN WHOLE OR IN PART AS THE BASIS FOR THE MANUFACTURE OR SALE OF ITEMS WITHOUT WRITTEN PERMISSION. COPYRIGHT © 1975 DIGITAL EQUIPMENT CORPORATION

WIRE TABLE					
ITEM NO	DESCRIPTION	FROM		TO	
		CONNECTION	WITH	CONNECTION	WITH
10	BLU/BLK	P1-1	2	P4-20	7
	GRN/WHT	P1-2	↑	P4-5	↑
	GRN/BLK	P1-4	↑	P4-16	↑
	BLU	P1-5	↑	P4-23	↑
	RED/WHT	P1-9	↑	P4-6	↑
	RED/BLK	P1-10	↑	P4-8	↑
	WHT	P1-17	↑	P4-3	↑
	BLK/WHT	P1-21	↑	P4-7	↑
	WHT/BLK	P1-22	↑	P4-22	↑
	BLK	P1-23	↑	P4-1	↑
22	BLU/WHT	P1-28	↓	P4-4	↓
	GRN/BLK	P1-30	↓	P4-14	↓
	GRN	P1-34	2	P4-2	7

WIRE TABLE					
ITEM NO	DESCRIPTION	FROM		TO	
		CONNECTION	WITH	CONNECTION	WITH
9	RED	P1-36	2	P2-3	5
	GRN	P1-38	↑	P2-7	↑
	WHT	P1-39	↑	P2-5	↑
9	BLK	P1-41	↑	P2-2	↑
	RED	P1-40	↑	P3-3	↑
	GRN	P1-42	↑	P3-7	↑
9	WHT	P1-43	↑	P3-5	↑
	BLK	P1-45	↑	P3-2	↑
	RED	P1-44	↑	P5-3	↑
9	GRN	P1-46	↑	P5-7	↑
	WHT	P1-47	↓	P5-5	↓
	BLK	P1-49	2	P5-2	5

NOTES:  
 1. USE CABLE TIES (ITEM 3) APPROXIMATELY EVERY SIX (6) INCHES.  
 2. CUT BACK RED WIRE OF ITEM 10 (CABLE, 15 COND) TO JACKET, BOTH ENDS.  
 3. COMPONENT TO BE LABELED WITH COMPONENT IDENTIFIERS, USING BRADY MARKERS.



LEGEND			
NUMBER	DIM X1 VARIATION	DIM Y1 (PRECUT) REF	TOL
BC082-25	0 FT	6 FT, 9 IN	±2.0 IN
	DIM X2 VARIATION	DIM Y2 (PRECUT) REF	TOL
	25 FT	25 FT, 8 IN	±3.0 IN

A/R	DESCRIPTION	DWG. PART NO.	ITEM NO.
1	HOOD & STRAIN RELIEF	1210493-50	8
13	CONTACT, PIN	1210493-05	7
1	SHELL & INSERT	1210493-01	6
12	TERMINAL SOCKET	1209379-03	5
3	HOUSING, 8 PIN	1209340-00	4
12	TIE, CABLE	9007890	3
25	SOCKET, CRIMP	1210089-05	2
1	HOUSING, TERMINATION	1210918-10	1

CLASS OF ACCURACY (CHECK ONE)	NOMINAL DIMENSION RANGE INCHES				
	OVER 0 TO 0.2	OVER 0.2 TO 0.4	OVER 0.4 TO 0.7	OVER 0.7 TO 1.2	OVER 1.2 TO 40.0
MEDIUM	±0.004	±0.008	±0.012	±0.016	±0.024
PREFERRED	±0.012	±0.016	±0.025	±0.04	±0.1

THIRD ANGLE PROJECTION

REMOVE BURRS AND BREAK SHARP CORNERS

DO NOT SCALE DWG

MATERIAL SEE PARTS LIST

FINISH

DRN. (C. HARRIS) 5-1-75  
 CHK'D (J. GARDNER) 6-4-75  
 ENG. (R. M. HARRIS) 4-75  
 PROJ. ENG. (S. M. HARRIS) 4-75  
 PROD. (B. B. HARRIS) 6-12-75

FIRST USED ON KL8A digital

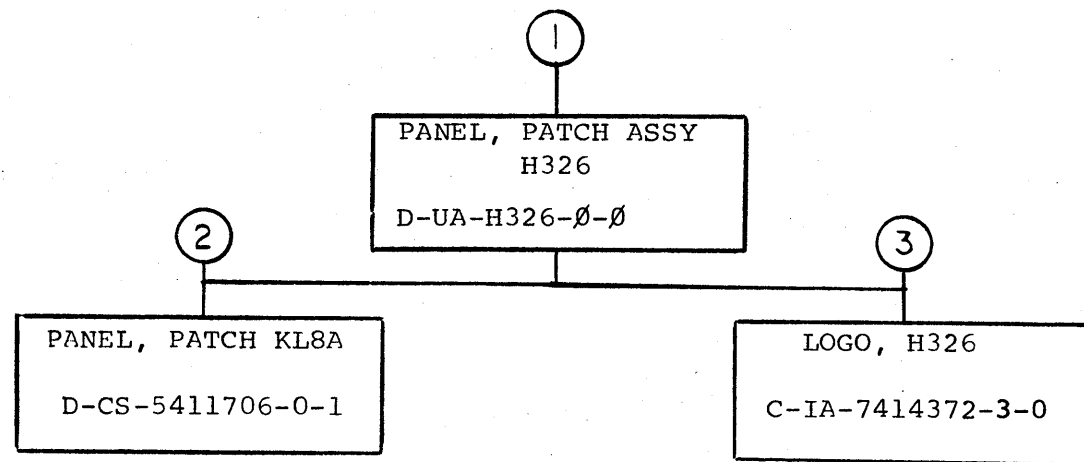
TITLE CABLE ASSY

SIZE CODE D IA  
 NUMBER BC082-0-0  
 REV. B

SHEET 1 OF 1

REV.	DESCRIPTION	DATE
1	REVISED TO INCLUDE CHANGES FROM REV. A	5-1-75
2	REVISED TO INCLUDE CHANGES FROM REV. B	6-4-75
3	REVISED TO INCLUDE CHANGES FROM REV. C	4-75
4	REVISED TO INCLUDE CHANGES FROM REV. D	6-12-75





TITLE	SIZE	CODE	NUMBER	REV
PANEL, PATCH ASSY H326	B	DD	H326 - Ø	A
SHEET 2 OF 3				

CUSTOMER PRINT SET		ELECTRICAL					CUSTOMER PRINT SET		MECHANICAL							
	MFG. SET	FIND NO.	DRAWING NO.	REV	NO OF SHT	DESCRIPTION	OPTION NO./FILE DATE		MFG. SET	FIND NO.	DRAWING NO.	REV	NO OF SHT	DESCRIPTION	OPTION NO./FILE DATE	
X		1	D-UA-H326-0-0	A	1	PANEL, PATCH ASSY H326				1	D-UA-H326-0-0	A	1	PANEL PATCH ASSY H326		
											D-PS-1212632-0-0		1	COVER, CABLE BOX		
											E-IA-7410666-0-0		1	H317 MOUNTING PLATE		
											C-IA-7413978-0-0		1	BAR CABLE CLAMP		
											A-PI-3700091-0-0			PACKAGING INSTRUCTIONS		
X		2	D-CS-5411706-0-1		4	PANEL, PATCH ASSY KL8A										
			K-CO-5411706-0-4		1	X-Y COORDINATE HOLE LOCATION										
			D-AH-5411706-0-5		1	ASSY/DRILLING HOLE LAYOUT										
			B-MH-5411706-0-6		1	MODULE ECO HISTORY										
										X	3	C-IA-7414372-0-0		1	LOGO H326	
														1	SILK SCREEN, H326	

CUSTOMER PRINT SET CODES  
X = PRINT OF DOCUMENT INCLUDED IN PRINT SET  
C = INCLUDES ALL PRINTS INDICATED ON DOCUMENT  
S = CONFIDENTIAL AUTHORIZED SIGNATURE REQUIRED

TITLE: PATCH, PANEL ASSY H326  
SHEET 3 OF 3  
SIZE CODE: B DD  
NUMBER: H326-0  
REV: A