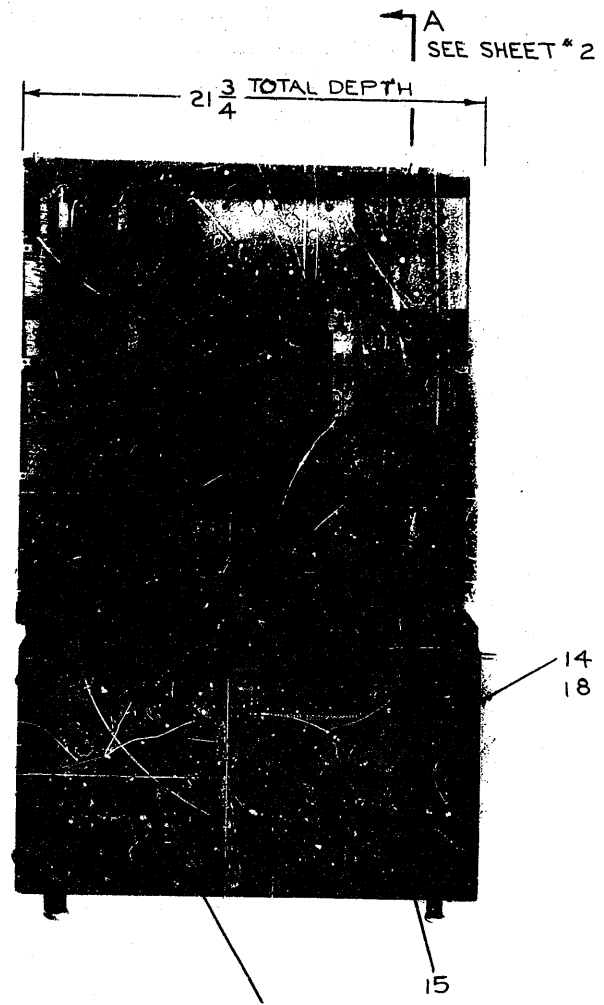
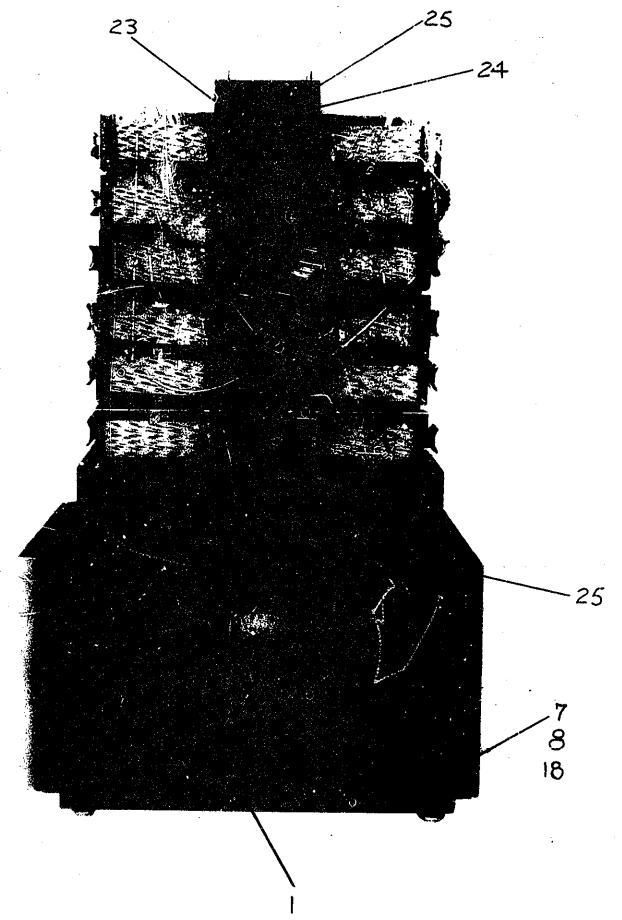
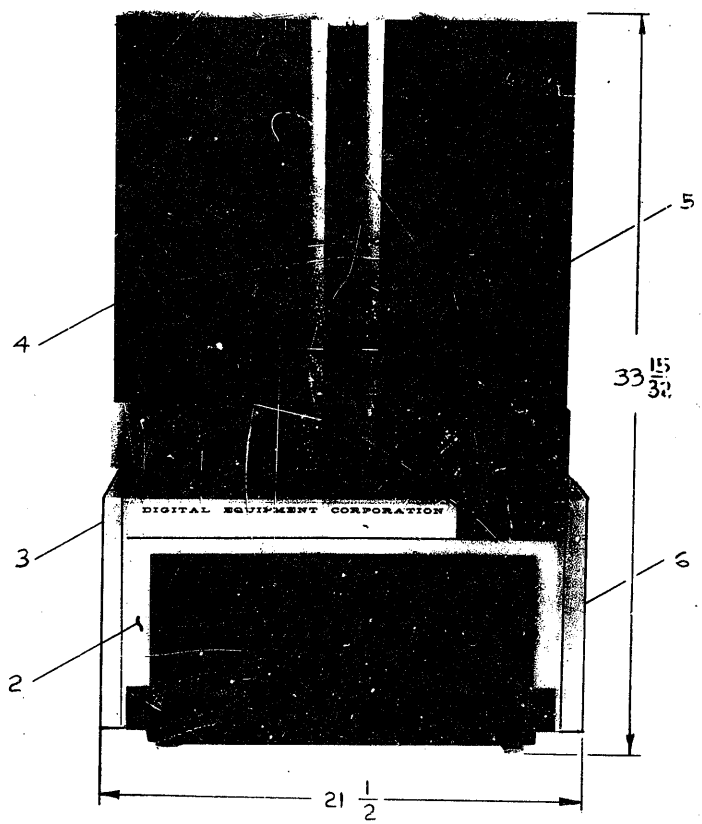


SECTION B-B
SCALE: 1/1

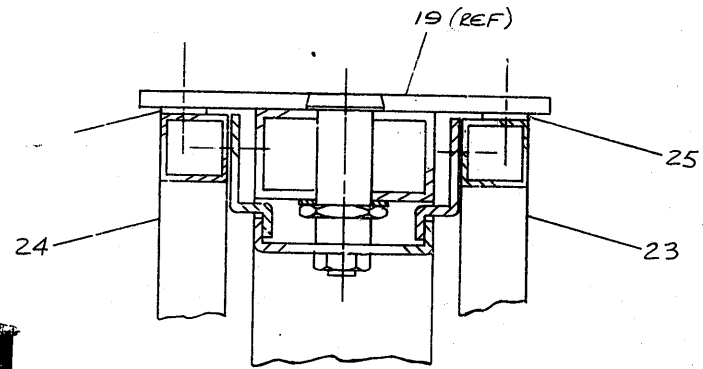
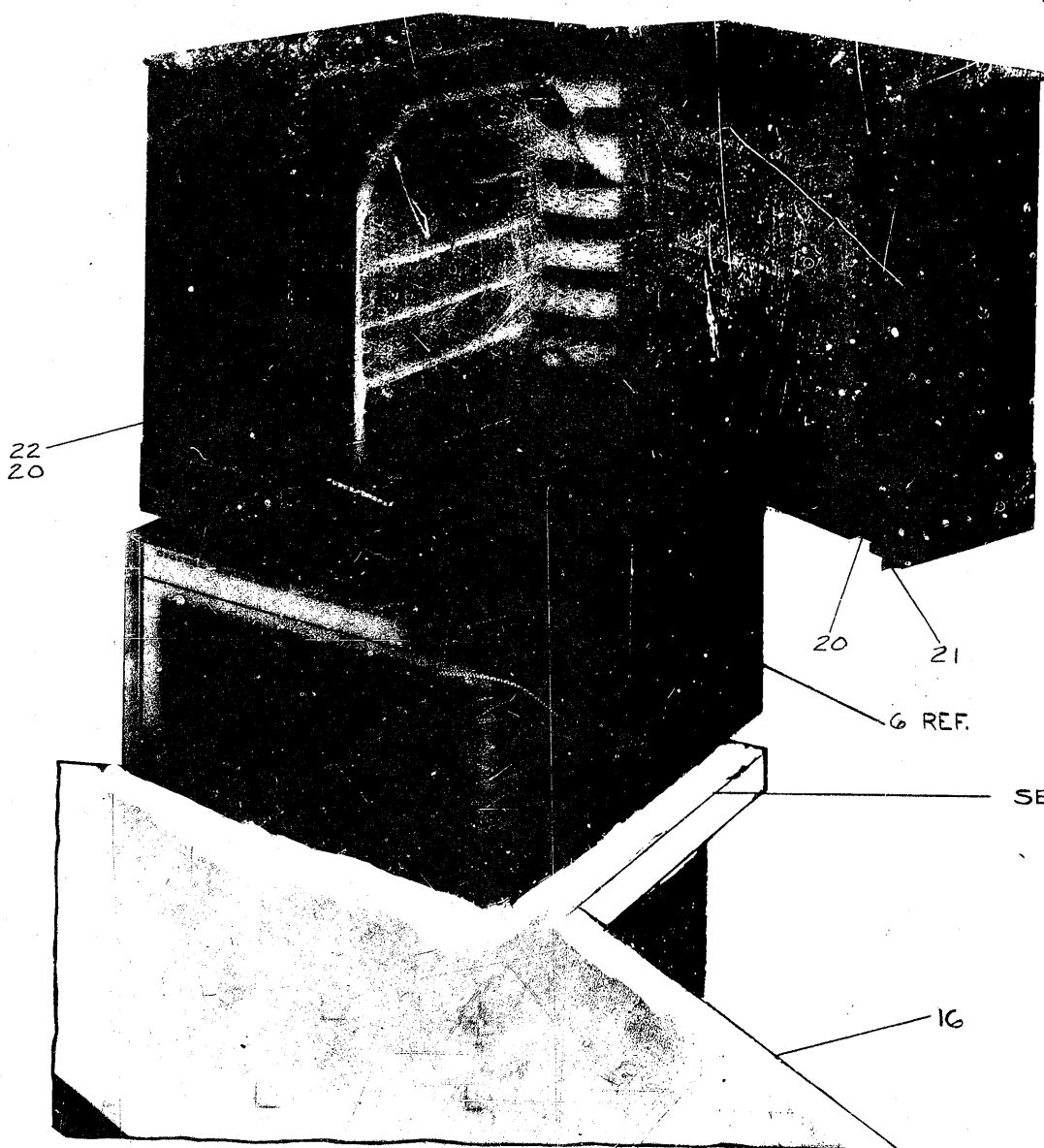


NOTES:

* INDICATES OPTION		
4 NYLON WASHER 5/16 I.D. X 7/8 O.D. X 1/16 THK		25
1 HINGED DOOR (LEFT)	MA-E-8-0-24	24
1 HINGED DOOR (RIGHT)	MA-D-8-0-23	23
1 HANDLE (LEFT)	MD-C-8-0-23-0-3	22
1 HANDLE (RIGHT)	MD-C-8-0-23-0-3	21
6 PHILLIPS FLAT HD. MACH. SCREW #10-32 X 5/8 LG. SST.		20
1 PDF-8 SUB ASSY	A-PL-8-0-1-4	19
10 INTERNAL TOOTH LOCK WASHER #10 HOLE		18
4 INTERNAL TOOTH LOCK WASHER #6 HOLE		17
1 WINGED TABLE ASSY. (FLOOR MODEL)	MA-D-8-0-45	16
1 AIR FILTER 7/16 THK. 17 9/16 SQUARE		15
4 PHILLIPS TRUSS HEAD MACH. SCREW #10-32 X 1 3/8 LG. SST.		14
1 UPPER FRAME		13
1 PHILLIPS TRUSS HEAD MACH. SCREW #10-32 X 5/8 LG. SST.		12
1 WASHER 5/32 I.D. X 1/4 O.D.		11
1 LEVELER W/KEY ROBERT L. MILLER		10
1 LOWER FRAME WELDMENT	MWA-E-8-0-1-1	9
6 PHILLIPS TRUSS HEAD MACH. SCREW #10-32 X 5/8 LG. SST.		8
1 708 POWER SUPPLY	MA-D-708-0-1	7
1 SIDE COVER (RIGHT)	MAD-D-8-0-42	6
1 TOP COVER (RIGHT)	MD-E-8-0-1-0-1	5
1 TOP COVER (LEFT)	MD-E-8-0-1-0-2	4
1 SIDE COVER (LEFT)	MAD-D-8-0-43	3
1 CONTROL PANEL	MA-E-8-0-21	2
1 FILTER COVER PANEL	MD-D-8-0-1-0-3	1
QTY.	DESCRIPTION	DRWG. NO. ITEM NO.

REVISIONS A * 2672 EXT. CHGS. SEE PREV. REV. 7-7-66	HOLE LEGEND <table border="1"> <tr> <th>SIZE</th> <th>QTY</th> <th>SIZE</th> <th>QTY</th> </tr> <tr> <td>G</td> <td></td> <td>A</td> <td></td> </tr> <tr> <td>H</td> <td></td> <td>B</td> <td></td> </tr> <tr> <td>J</td> <td></td> <td>C</td> <td></td> </tr> <tr> <td>K</td> <td></td> <td>D</td> <td></td> </tr> <tr> <td>L</td> <td></td> <td>E</td> <td></td> </tr> <tr> <td>M</td> <td></td> <td>F</td> <td></td> </tr> </table>	SIZE	QTY	SIZE	QTY	G		A		H		B		J		C		K		D		L		E		M		F		UNLESS OTHERWISE SPECIFIED GRINDING-IRRESPECTIVE OF THE LAY MICROINCHES TOLERANCES FRACTIONS ± 1/64 DECIMALS ± .005 ANGLES ± 1/2° MATERIAL: <u> </u> ROCKWELL: <u> </u> SURF TREAT: <u> </u>	FINISH (AFTER FABRICATION) STEP 1: <u> </u> 2: <u> </u> 3: <u> </u> 4: <u> </u> 5: <u> </u> 6: <u> </u>	DRAWN: <u> </u> DATE: <u>4/15/65</u> CHECKED: <u> </u> DATE: <u>4/15/65</u> ENG: <u> </u> DATE: <u>4-16-65</u> PROJ. ENG: <u> </u> DATE: <u>4-16-65</u> PROD: <u> </u> DATE: <u>4-16-65</u>	TITLE PDP-8 TABLE MODEL FOR EQUIPMENT CORPORATION MAYNARD, MASSACHUSETTS ASSY NO. <u> </u>	CODE DRWG. NO. REV LTR. MA D-8-0-1 A
		SIZE	QTY	SIZE	QTY																													
G		A																																
H		B																																
J		C																																
K		D																																
L		E																																
M		F																																
SCALE: NONE SHEET 1 OF 2																																		

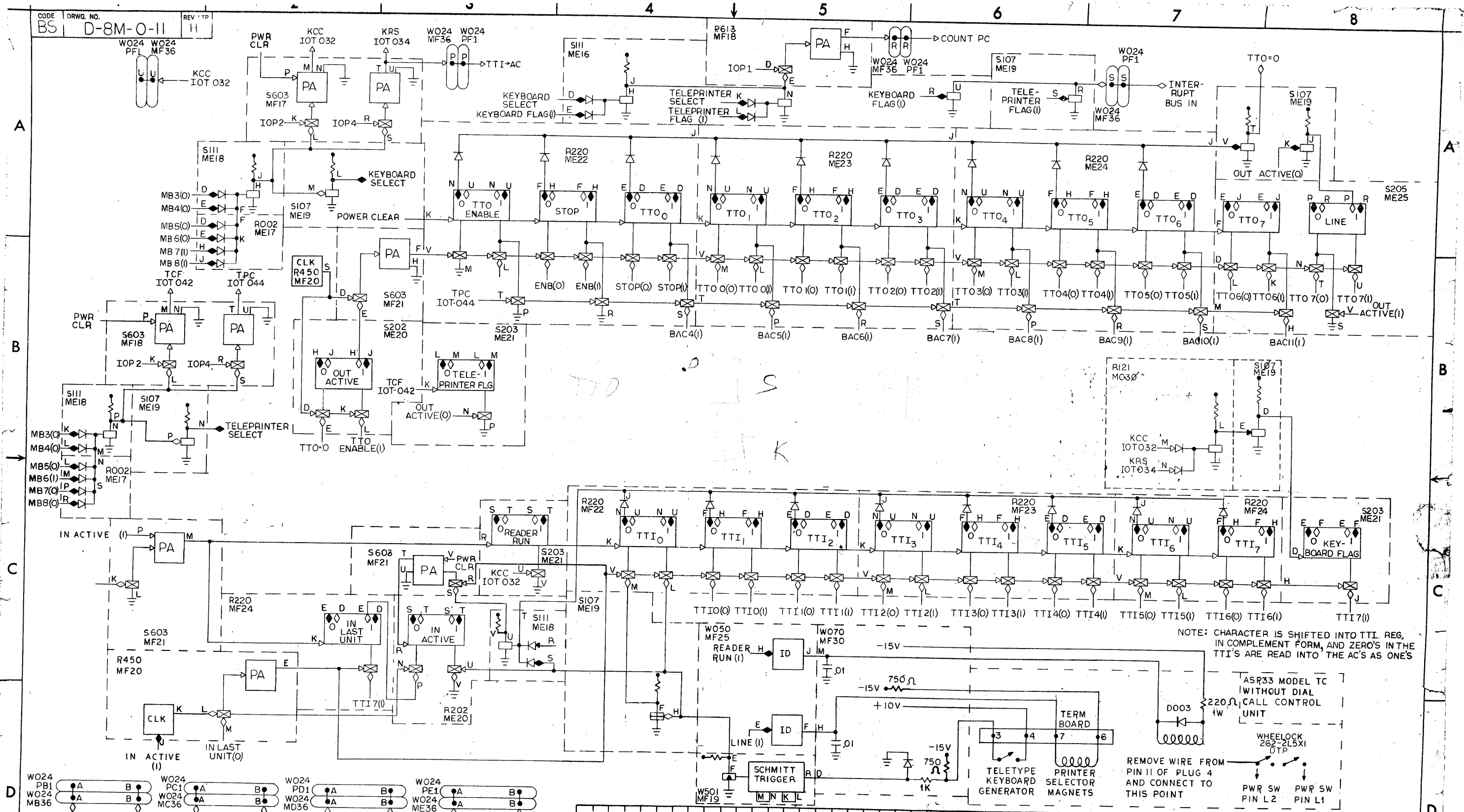
CODE MA DRWG. NO. D-8-0-1 REV. LTR. A



SECTION A-A
SCALE: 1/1

NOTES:
1. TABLE HEIGHT TO BE 26 3/4 FROM FLOOR

REV. LTR.	A	ECO*	*2672 SEE SHEET #1 7-7-66	HOLE LEGEND				UNLESS OTHERWISE SPECIFIED GRINDING-IRRESPECTIVE OF THE LAY ✓ MICROINCHES TOLERANCES			FINISH (AFTER FABRICATION)		DATE 4/15/65	TITLE PDP-8 TABLE MODEL
				SIZE	QTY	SIZE	QTY	FRACTIONS ± 1/64	DECIMALS ± .008	ANGLES ± 1/2°	STEP 1	DATE		
CHK				G		A		MATERIAL	ROCKWELL	SURF TREAT	2	DATE	FOR	
				H		B					3	DATE	CODE	
				J		C					4	DATE	DRWG. NO.	
				K		D					5	DATE	MA D-8-0-1	
				L		E					6	DATE	REV LTR	
				M		F						DATE	A	
												SCALE NONE	SHEET 2 OF 2	



REV. LTR.	NO.	DATE	DESIGNED BY	DATE	CHECKED BY	DATE	ENGINEER	DATE	PROJ. ENG.	DATE	PROD.	DATE

REV. LTR.	NO.	DATE	DESIGNED BY	DATE	CHECKED BY	DATE	ENGINEER	DATE	PROJ. ENG.	DATE	PROD.	DATE

ASSEMBLY NO.	DATE	DATE	DATE	DATE	DATE	DATE	DATE	DATE	DATE	DATE	DATE	DATE

digital
EQUIPMENT CORPORATION
MAYNARD, MASSACHUSETTS

TITLE: TELEPRINTER

FOR: _____

CO. DE: BS
DRWG. NO: D-8M-0-11
REV. LTR: 11

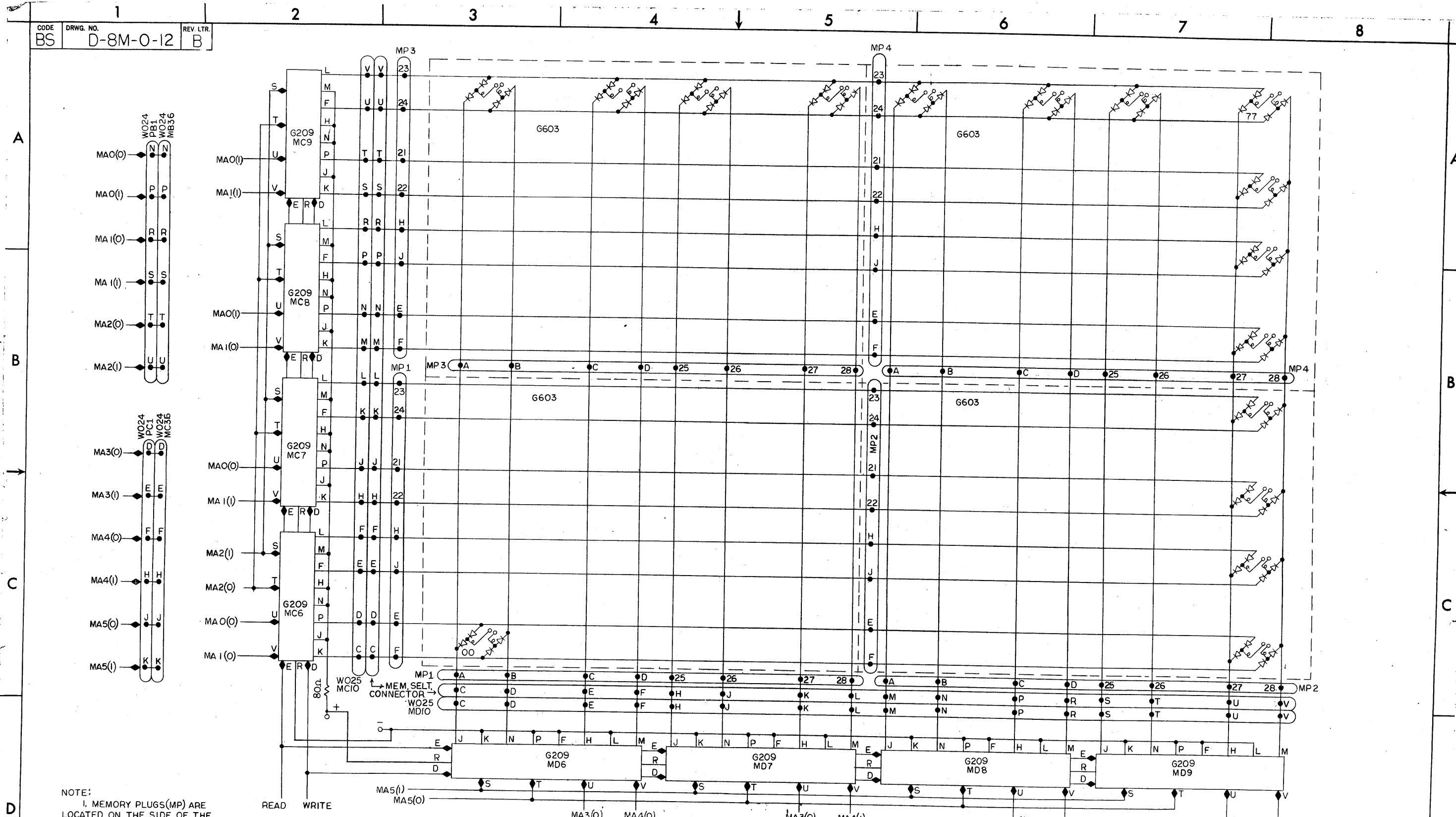
SHEET: _____ OF: _____

3 - GRN
4 - RED
6 - VEL
7 - BLK

- RELAY (GRN)
+ RELAY (RED)

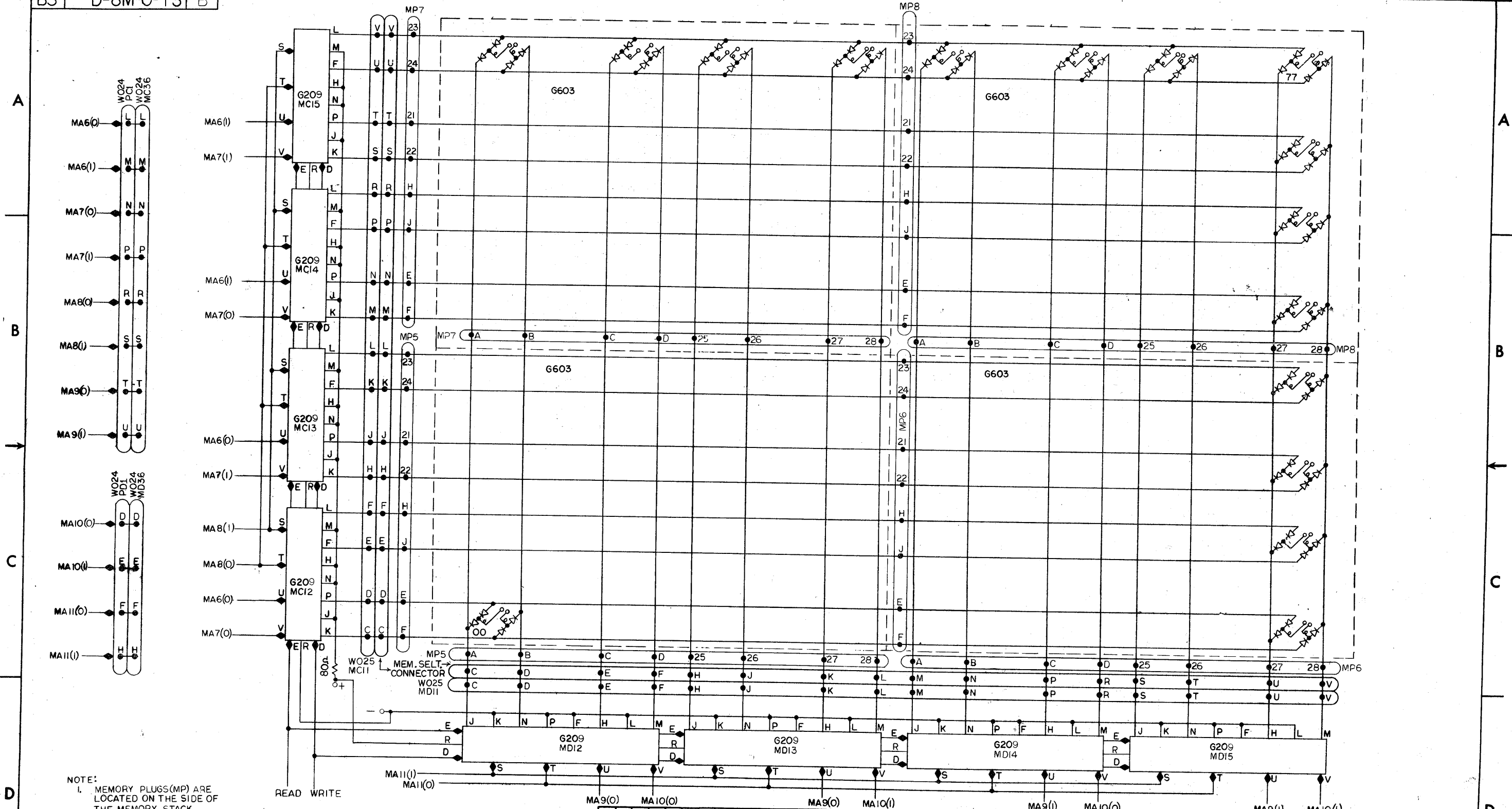
M. - LOCK

3 - RLY 2 + RLY 4



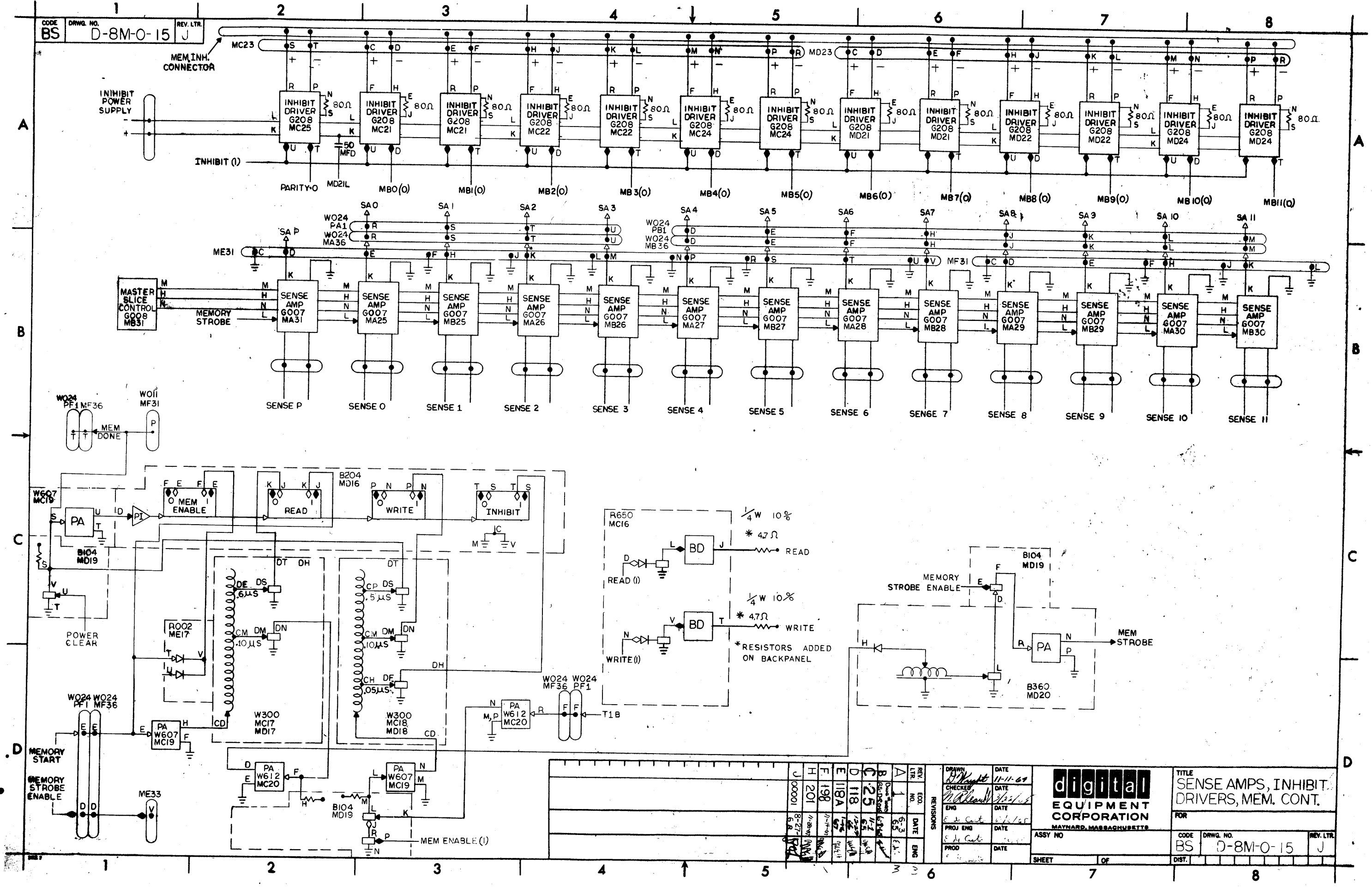
NOTE:
1. MEMORY PLUGS(MP) ARE
LOCATED ON THE SIDE OF THE
MEMORY STACK.

REV. LTR.	REV. NO.	DATE	<p>digital EQUIPMENT CORPORATION MAYNARD, MASSACHUSETTS</p>	TITLE
B	6	10-20-64		X AXIS SELECTION
ENG.	DATE	DATE		FOR
PROJ. ENG.	DATE	DATE		ASSY. NO.
PROD.	DATE	DATE		SHEET OF
CODE	DRWG. NO.	REV. LTR.		
BS	D-8M-0-12	B		

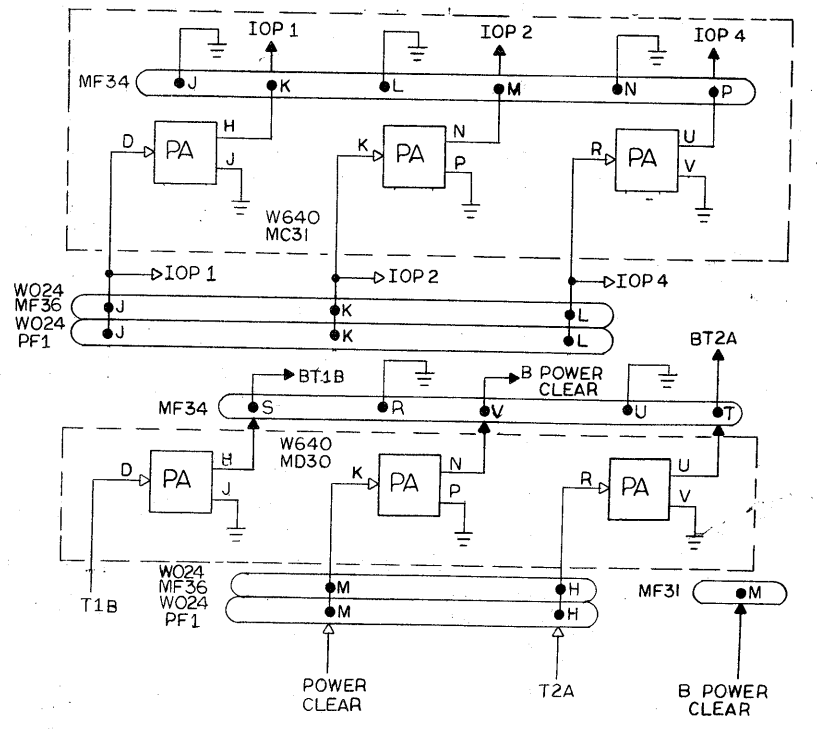
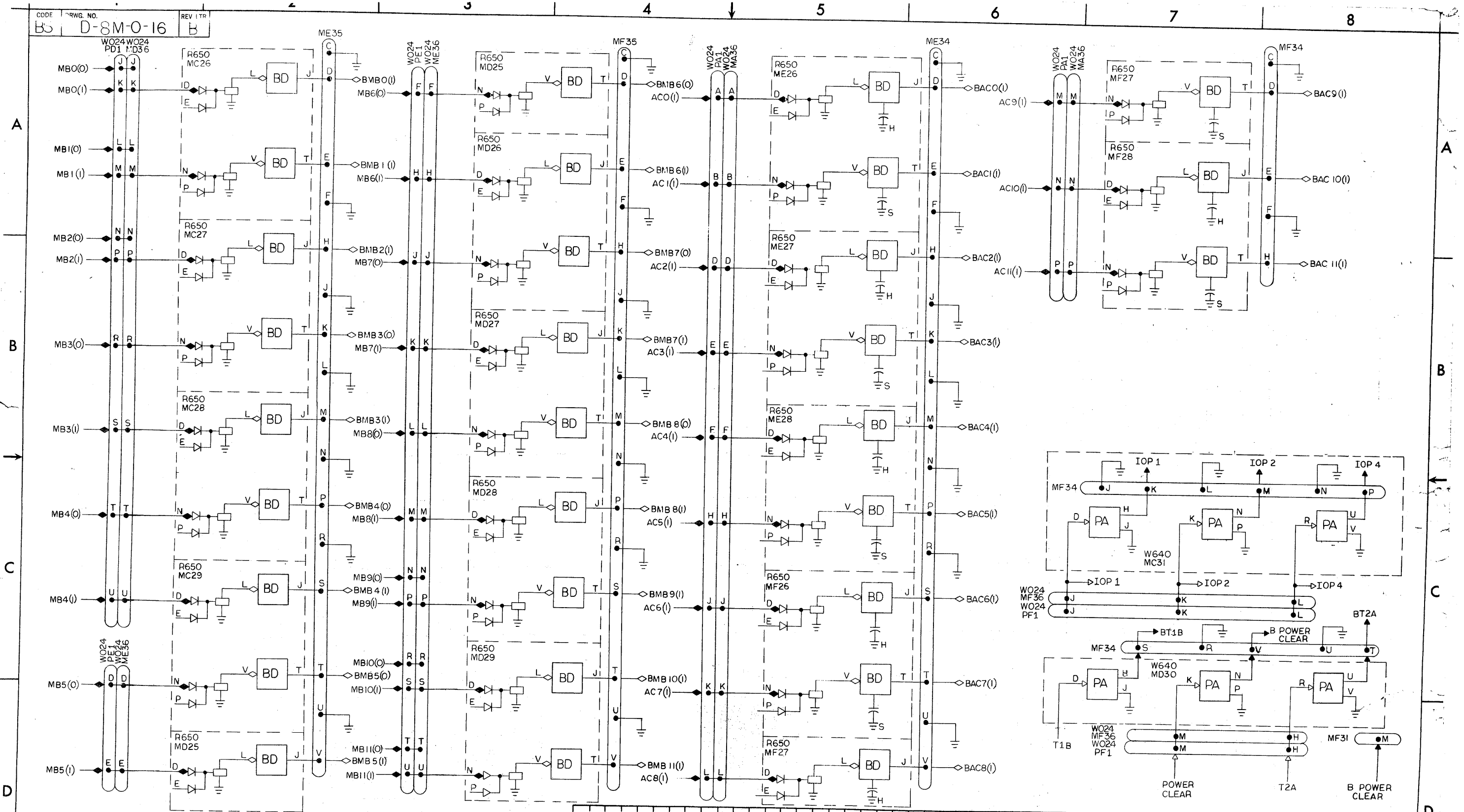


NOTE:
1. MEMORY PLUGS(MP) ARE LOCATED ON THE SIDE OF THE MEMORY STACK.

REVISIONS 1 2 3 4 5 6 7 8	DRAWN DATE 10-20-65	digital EQUIPMENT CORPORATION MAYNARD, MASSACHUSETTS	TITLE Y AXIS SELECTION
	CHECKED DATE 3/22/65		FOR
	ENG DATE 5/16/65		ASSY NO
	PROD DATE 8/16/65		CODE BS
DRWG. NO. D-8M-0-13		REV. LTR B	SHEET OF



REV. LTR.	DATE	 digital EQUIPMENT CORPORATION MAYNARD, MASSACHUSETTS	TITLE
REV. LTR.	DATE		SENSE AMPS, INHIBIT. DRIVERS, MEM. CONT.
CODE	DRWG. NO.	ASSY. NO.	FOR
BS	D-8M-0-15		
REV. LTR.	DATE	SHEET	DIST.
J	11-11-69	OF	



REV. LTR		DRAWN <i>D. Wright</i> DATE 11-30-64		TITLE	
NO.		CHECKED DATE		IN-OUT BUFFERS	
DATE		ENG DATE		FOR	
DATE		PROJ ENG DATE		ASSY NO	
DATE		PROD DATE		CODE	
DATE		DATE		DRWG. NO.	
DATE		DATE		D-8M-0-16	
DATE		DATE		REV. LTR.	
DATE		DATE		B	
DATE		DATE		SHEET	
DATE		DATE		OF	
DATE		DATE		DIST.	
DATE		DATE		DIST.	



DRWG NO

K-8M-0-18

REVLTR

W

REVISIONS			
REV LTR	ECONO	DATE	ENG
V	00003	6-4-69	W
W	00004	6-11-69	W

<table border="1"> <tr><td>DRAWN</td><td>DATE</td></tr> <tr><td>D. WRIGHT</td><td>12-7-64</td></tr> <tr><td>CHECKED</td><td>DATE</td></tr> <tr><td>N. RHEAULT</td><td>9-9-65</td></tr> <tr><td>ENG</td><td>DATE</td></tr> <tr><td>DE CASTRO</td><td>5-6-65</td></tr> <tr><td>PROJ ENG</td><td>DATE</td></tr> <tr><td>DE CASTRO</td><td>5-6-65</td></tr> <tr><td>PROD</td><td>DATE</td></tr> <tr><td>DE CASTRO</td><td>5-6-65</td></tr> </table>	DRAWN	DATE	D. WRIGHT	12-7-64	CHECKED	DATE	N. RHEAULT	9-9-65	ENG	DATE	DE CASTRO	5-6-65	PROJ ENG	DATE	DE CASTRO	5-6-65	PROD	DATE	DE CASTRO	5-6-65	<p>digital EQUIPMENT CORPORATION MAYNARD, MASSACHUSETTS</p>	<p>TITLE WIRING LIST PDP 8 Ø (MEM)</p> <p>FOR TAPE # FILE #</p>	<table border="1"> <tr> <td>ASSY NO</td> <td>SIZE</td> <td>CODE</td> <td>DWG. NO.</td> <td>REV LTR</td> </tr> <tr> <td></td> <td>K</td> <td>WL</td> <td>8M-0-18</td> <td>W</td> </tr> </table>	ASSY NO	SIZE	CODE	DWG. NO.	REV LTR		K	WL	8M-0-18	W
DRAWN	DATE																																
D. WRIGHT	12-7-64																																
CHECKED	DATE																																
N. RHEAULT	9-9-65																																
ENG	DATE																																
DE CASTRO	5-6-65																																
PROJ ENG	DATE																																
DE CASTRO	5-6-65																																
PROD	DATE																																
DE CASTRO	5-6-65																																
ASSY NO	SIZE	CODE	DWG. NO.	REV LTR																													
	K	WL	8M-0-18	W																													
SCALE	SHEET	OF	DIST.																														

COLOR	NAME	PIN	LOCATION	LOCATION	REMARKS
		A			BLANK
		B			BLANK
W/BLK	GND	C	ME34		
W/BRN	BAC 0 (1)	D			
W/RED	GND	X			
W/ORN	BAC 1 (1)	E			
W/YEL	GND	F			
W/GRN	BAC 2 (1)	H			
W/BLU	GND	J			
W/VIO	BAC 3 (1)	K			
W/GRY	GND	L			
WHT	BAC 4 (1)	M			
W/BLK	GND	N			
W/BRN	BAC 5 (1)	P			
W/RED	GND	R			
W/ORN	BAC 6 (1)	S			
W/YEL	GND	X			
W/GRN	BAC 7 (1)	T			
W/BLU	GND	U			
W/VIO	BAC 8 (1)	V	ME34		
W/GRY	GND	X			

COLOR	NAME	PIN	LOCATION	LOCATION	REMARKS
		A			BLANK
		B			BLANK
W/BLK	GND	C	MF34		
W/BRN	BAC 9 (1)	D			
W/RED	GND	X			
W/ORN	BAC 10 (1)	E			
W/YEL	GND	F			
W/GRN	BAC 11 (1)	H			
W/BLU	GND	J			
W/VIO	IOP 1	K			
W/GRY	GND	L			
WHT	IOP 2	M			
W/BLK	GND	N			
W/BRN	IOP 4	P			
W/RED	GND	R			
W/ORN	BT 1B	S			
W/YEL	GND	X			
W/GRN	T 2	T			
W/BLU	GND	U			
W/VIO	PWR CLR	V			
W/GRY	GND	X	MF34		

REV. LTR.	ECO. NO.	DATE	ENG.	digital EQUIPMENT CORPORATION MAYNARD, MASSACHUSETTS	CABLE CONNECTOR			
A	Dwg No. WAS CL-A-8-0-35	6-7-65	E. de la		TITLE	AC BITS & IOP'S		
B	00001	8-21-65	F. J.		FOR			
				DRAWN 3-9-65 P.J. Priest	CODE	DRWG. NO.	REV.	
				CHECKED <i>[Signature]</i> 3/2/65	CL	A-8M-0-35	B	
				ENG. <i>[Signature]</i>	SHEET	1 OF 2		
				PROD. E de la Cour 5/6/65	DIST.			

REV. LTR.	ECO. NO.	DATE	ENG.	digital EQUIPMENT CORPORATION MAYNARD, MASSACHUSETTS	CABLE CONNECTOR			
A	Dwg. No. WAS CL-A-8-0-35	6-7-65			TITLE	AC BITS & IOP'S		
					FOR			
				DRAWN 3-9-65 P.J. Priest	CODE	DRWG. NO.	REV.	
				CHECKED <i>[Signature]</i> 3/2/65	CL	A-8M-0-35	B	
				ENG.	SHEET	2 OF 2		
				PROD.	DIST.			

COLOR	NAME	PIN	LOCATION	LOCATION	REMARKS
		A			BLANK
		B			BLANK
W/BLK	GND	C	ME35		
W/BRN	BMB 0 (1)	D			
W/RED	GND	X			
W/ORN	BMB 1 (1)	E			
W/YEL	GND	F			
W/GRN	BMB 2 (1)	H			
W/BLU	GND	J			
W/VIO	BMB 3 (0)	K			
W/GRY	GND	L			
WHT	BMB 3 (1)	M			
W/BLK	GND	N			
W/BRN	BMB 4 (0)	P			
W/RED	GND	R			
W/ORN	BMB 4 (1)	S			
W/YEL	GND	X			
W/GRN	BMB 5 (0)	T			
W/BLU	GND	U			
W/VIO	BMB 5 (1)	V			
W/GRY	GND	X	ME35		


COLOR	NAME	PIN	LOCATION	LOCATION	REMARKS
		A			BLANK
		B			BLANK
W/BLK	GND	C	MF35		
W/BRN	BMB 6 (0)	D			
W/RED	GND	X			
W/ORN	BMB 6 (1)	E			
W/YEL	GND	F			
W/GRN	BMB 7 (0)	H			
W/BLU	GND	J			
W/VIO	BMB 7 (1)	K			
W/GRY	GND	L			
WHT	BMB 8 (0)	M			
W/BLK	GND	N			
W/BRN	BMB 8 (1)	P			
W/RED	GND	R			
W/ORN	BMB 9 (1)	S			
W/YEL	GND	X			
W/GRN	BMB 10 (1)	T			
W/BLU	GND	U			
W/VIO	BMB 11 (1)	V			
W/GRY	GND	X	MF35		


REV. LTR.	ECO. NO.	DATE	ENG.	digital EQUIPMENT CORPORATION MAYNARD, MASSACHUSETTS	CABLE CONNECTOR			
A	DWG. No. WAS CL-A-8-0-38	6-7-65	B. Priest		TITLE	MB BITS		
				DRAWN	3-9-65	FOR		
				P.J. Priest				
				CHECKED		CODE	DRWG. NO.	REV.
				<i>[Signature]</i>		CL	A-8M-0-38	A
				ENG.		SHEET	1 OF 2	
				PROD.		DIST.		
				<i>[Signature]</i>				

REV. LTR.	ECO. NO.	DATE	ENG.	digital EQUIPMENT CORPORATION MAYNARD, MASSACHUSETTS	CABLE CONNECTOR			
A	DWG. No. WAS CL-A-8-0-38	6-7-65			TITLE	MB BITS		
				DRAWN	3-9-65	FOR		
				P.J. Priest				
				CHECKED		CODE	DRWG. NO.	REV.
				<i>[Signature]</i>		CL	A-8M-0-38	A
				ENG.		SHEET	2 OF 2	
				PROD.		DIST.		
				<i>[Signature]</i>				


COLOR	NAME	PIN	LOCATION	LOCATION	REMARKS
		A			BLANK
		B			BLANK
W/BLK	GND	C	ME 31		
W/BRN	SA P	D	↑		
W/RED	GND	×			
W/ORN	SA 0	E			
W/YEL	GND	F			
W/GRN	SA 1	H			
W/BLU	GND	J			
W/VIO	SA 2	K			
W/GRY	GND	L			
WHT	SA 3	M			
W/BLK	GND	N			
W/BRN	SA 4	P			
W/RED	GND	R			
W/ORN	SA 5	S			
W/YEL	GND	×			
W/GRN	SA 6	T			
W/BLU	GND	U			
W/VIO	SA 7	V	↓		
W/GRY	GND	×	ME 31		

COLOR	NAME	PIN	LOCATION	LOCATION	REMARKS
		A			BLANK
		B			BLANK
W/BLK	GND	C	MF 31		
W/BRN	SA 8	D	↑		
W/RED	GND	×			
W/ORN	SA 9	E			
W/YEL	GND	F			
W/GRN	SA 10	H			
W/BLU	GND	J			
W/VIO	SA 11	K			
W/GRY	GND	L			
WHT	PWR CLR	M			
W/BLK	GND	N			
W/BRN		P			
W/RED	GND	R			
W/ORN		S			
W/YEL	GND	×			
W/GRN		T			
W/BLU	GND	U			
W/VIO		V	↓		
W/GRY	GND	×	MF 31		

REV. LTR.	ECO. NO.	DATE	ENG.	 digital EQUIPMENT CORPORATION MAYNARD, MASSACHUSETTS	SIGNAL CABLE CONNECTOR			
A	Dwa Nowas CL-A-8-0-40	6-8-65	E. Priest		TITLE	SENSE AMPS		
					DRAWN	FOR		
					P.J. Priest 3-9-65	CODE	DRWG. NO.	REV.
				CHECKED	CL	A-8M-0-40	A	
				ENG.	SHEET 1 OF 2			
				PROD.	DIST.			

REV. LTR.	ECO. NO.	DATE	ENG.	 digital EQUIPMENT CORPORATION MAYNARD, MASSACHUSETTS	SIGNAL CABLE CONNECTOR			
A	Dwa Nowas CL-A-8-0-40	6-8-65	E. Priest		TITLE	SENSE AMPS		
					DRAWN	FOR		
					3-9-65 P.J. Priest	CODE	DRWG. NO.	REV.
				CHECKED	CL	A-8M-0-40	A	
				ENG.	SHEET 2 OF 2			
				PROD.	DIST.			

COLOR	NAME	PIN	LOCATION	LOCATION	REMARKS
	+10V	A	MF30		BLANK
	-15V	B	↑		BLANK
W/BLK	GND	C			
W/BRN	KEY BOARD GENERATOR	D			
W/RED	GND	⊗			
W/ORN		E			
W/YEL	GND	F			
W/GRN	SELECTOR MAGNETS	H			
W/BLU	GND	J			
W/VIO		K			
W/GRY	GND	L			
WHT	POWER SWITCHES	M			
W/BLK	GND	N			
W/BRN		P			
W/RED	GND	R			
W/ORN		S			
W/YEL	GND	⊗			
W/GRN		T			
W/BLU	GND	U			
W/VIO		V			
W/GRY	GND	⊗	MF30		

REV. LTR.	ECO. NO.	DATE	ENG.	 digital EQUIPMENT CORPORATION MAYNARD, MASSACHUSETTS	IN-OUT CABLE CONNECTOR	
A	Dwg. No. was CL-A-8-0-44	6-9-65	<i>E. de la Torre</i>		TITLE	TELE PRINTER
				DRAWN	3/4/65	FOR
					S CLIPPINGER	
				CHECKED	<i>E. de la Torre</i>	CODE CL
				ENG.	<i>E. de la Torre</i>	DRWG. NO.
				PROD.	<i>E. de la Torre</i>	A-8M-0-14
						REV. A
						SHEET OF
						DIST.

JACK <input type="checkbox"/>		PLUG <input checked="" type="checkbox"/>		LOCATION, LENGTH, ROUTE	
FEMALE <input type="checkbox"/>		MALE <input checked="" type="checkbox"/>		PA01 & MA36	
COLOR	PIN	PIN	NAME	REMARKS	
W/BLK (X)	PA01A	MA36A	AC0(1)		
W/BRN (Z)	PA01B	MA36B	AC1(1)		
W/RED (R)	↑ C	↑ C	GND		
W/ORN (O)	D	D	AC2(1)		
W/YEL (Y)	E	E	3(1)		
W/GRN (N)	F	F	4(1)		
W/BLU (B)	H	H	5(1)		
W/VIO (V)	J	J	6(1)		
W/GRY (G)	K	K	7(1)		
WHT (W)	L	L	8(1)		
W/BLK (X)	M	M	9(1)		
W/BRN (Z)	N	N	10(1)		
W/RED (R)	P	P	AC11(1)		
W/ORN (O)	R	R	SA 0		
W/YEL (Y)	S	S	↑ 1		
W/GRN (N)	T	T	↓ 2		
W/BLU (B)	↓ U	↓ U	SA 3		
W/VIO (V)	PA01V	MA36V	GND		

JACK <input type="checkbox"/>		PLUG <input checked="" type="checkbox"/>		LOCATION, LENGTH, ROUTE	
FEMALE <input type="checkbox"/>		MALE <input checked="" type="checkbox"/>		PB01 & MB36	
COLOR	PIN	PIN	NAME	REMARKS	
W/BLK (X)	PB01A	MB36A	TTI 0(1)		
W/BRN (Z)	↑ B	↑ B	TTI 1(1)		
W/RED (R)	C	C	GND		
W/ORN (O)	D	D	SA 4		
W/YEL (Y)	E	E	↑ 5		
W/GRN (N)	F	F	6		
W/BLU (B)	H	H	7		
W/VIO (V)	J	J	8		
W/GRY (G)	K	K	9		
WHT (W)	L	L	↓ 10		
W/BLK (X)	M	M	SA 11		
W/BRN (Z)	N	N	MA 0(0)		
W/RED (R)	P	P	MA 0(1)		
W/ORN (O)	R	R	MA 1(0)		
W/YEL (Y)	S	S	MA 1(1)		
W/GRN (N)	T	T	MA 2(0)		
W/BLU (B)	↓ U	↓ U	MA 2(1)		
W/VIO (V)	PB01V	MB36V	GND		

DRAWN 3/15/65
 CHECKED
 ENG



INTERCHASSIS CONNECTOR
 TITLE
 PROCESSOR & MEMORY CHASSIS CONNECTORS

APPLY	6/3/65	ECO. NO.	00001
REV. LTR.	REV. #1	REV. LTR.	REV. #1

DWG NO A-8-0-30
 SHEET 1 OF 7
 REV. LTR. B
 CODE CA

DRAWN 3/15/65
 S Clippinger
 CHECKED
 ENG



INTERCHASSIS CONNECTOR
 TITLE
 PROCESSOR & MEMORY CHASSIS CONNECTOR


APPLY	6/3/65	ECO. NO.	00001
REV. LTR.	REV. #1	REV. LTR.	REV. #1

DWG NO A-8-0-30
 SHEET 2 OF 7
 REV. LTR. B
 CODE CL

JACK PLUG LOCATION, LENGTH, ROUTE
 FEMALE MALE PF01 & ME36

COLOR	PIN	PIN	NAME	REMARKS
W/BLK (X)	PF01A	ME36A	TTI 6(1)	
W/BRN (Z)	↑ B	↑ B	TTI 7(1)	
W/RED (R)	C	C	GND	
W/ORN (O)	D	D	MB 5(0)	
W/YEL (Y)	E	E	↑ 5(1)	
W/GRN (N)	F	F	6(0)	
W/BLU (B)	H	H	6(1)	
W/VIO (V)	J	J	7(0)	
W/GRY (G)	K	K	7(1)	
WHT (W)	L	L	8(0)	
W/BLK (X)	M	M	8(1)	
W/BRN (Z)	N	N	9(0)	
W/RED (R)	P	P	9(1)	
W/ORN (O)	R	R	10(0)	
W/YEL (Y)	S	R	10(1)	
W/GRN (N)	T	T	↓ 11(0)	
W/BLU (B)	↓ U	↓ U	MB 11(1)	
W/VIO (V)	PF01V	ME36V	GND	

DRAWN 3/15/65
 S Clippinger
 CHECKED *[Signature]* 3/15/65
 ENG


DIGITAL
 EQUIPMENT CORPORATION
 MAYNARD, MASSACHUSETTS


INTERCHASSIS CONNECTOR
 TITLE
 PROCESSOR & MEMORY CHASSIS CONNECTOR

APPLY																			
ECO. NO.	A-8-0-30															REV. LTR.	B		
REV. LTR.	SHEET 5 OF 7															CODE	CL		

JACK PLUG LOCATION, LENGTH, ROUTE
 FEMALE MALE PF01 & MF36


COLOR	PIN	PIN	NAME	REMARKS
W/BLK (X)	PF01A	MF36A	FETCH (F)	
W/BRN (Z)	↑ B	↑ B	B SET	
W/RED (R)	C	C	MEMORY STROBE ENB	
W/ORN (O)	E	E	MEM START	
W/YEL (Y)	F	F	T 1B	
W/GRN (N)	H	H	T 2A	
W/BLU (B)	J	J	IOP 1	
W/VIO (V)	K	K	IOP 2	
W/GRY (G)	L	L	IOP 4	
WHT (W)	M	M	PWR CLR	
W/BLK (X)	N	N	E SET	
W/BRN (Z)	P	P	TTI AC	
W/RED (R)	R	R	SKIP	
W/ORN (O)	S	S	INTERRUPT	
W/YEL (Y)	T	T	MEM DONE	
W/GRN (N)	↓ U	↓ U	IOT 032	
W/BLU (B)	PF01V	MF36V	GND	
W/VIO (V)				

DRAWN 3/15/65
 S Clippinger
 CHECKED *[Signature]* 3/15/65
 ENG


DIGITAL
 EQUIPMENT CORPORATION
 MAYNARD, MASSACHUSETTS

INTERCHASSIS CONNECTOR
 TITLE
 PROCESSOR & MEMORY CHASSIS CONNECTOR

APPLY																			
ECO. NO.	A-8-0-30															REV. LTR.	B		
REV. LTR.	SHEET 6 OF 7															CODE	CL		

JACK <input type="checkbox"/>		PLUG <input checked="" type="checkbox"/>		LOCATION, LENGTH, ROUTE	
FEMALE <input type="checkbox"/>		MALE <input checked="" type="checkbox"/>		PD#2 & MD35	
COLOR	PIN	PIN	NAME	REMARKS	
W/BLK (X)	PD#2A	MD35A	JMS		
W/BRN (Z)	↑ B	↑ B	INT ACK		
W/RED (R)	C	C	GND		
W/ORN (O)	D	D	SR → PC		
W/YEL (Y)	E	E	MB → PC ENABLE 0-4		
W/GRN (N)	F	F	0 → PC ₅₋₁₁		
W/BLU (B)	H	H	OPR		
W/VIO (V)	J	J	IM 6		
W/GRY (G)	K	K	↑ 9		
WHT (W)	L	L	7		
W/BLK (X)	M	M	10		
W/BRN (Z)	N	N	↓ 8		
W/RED (R)	P	P	IM 11		
W/ORN (O)	R	R	MB → PC ENABLE 0-4		
W/YEL (Y)	S	S	MEM. EXT.		
W/GRN (N)	T	T	IOT		
W/BLU (B)	↓ U	↓ U	INT. INHIBIT		
W/VIO (V)	PD#2V	MD35V	GND		
DRAWN S Clippinger 3/15/65		 EQUIPMENT CORPORATION MAYNARD, MASSACHUSETTS		TITLE PROCESSOR & MEMORY CHASSIS CONNECTOR	
CHECKED <i>[Signature]</i> 3/15/65				DWG NO A-8-0-30	
ENG				REV. LTR. B	
				SHEET 7 OF 7	
				CODE CE	