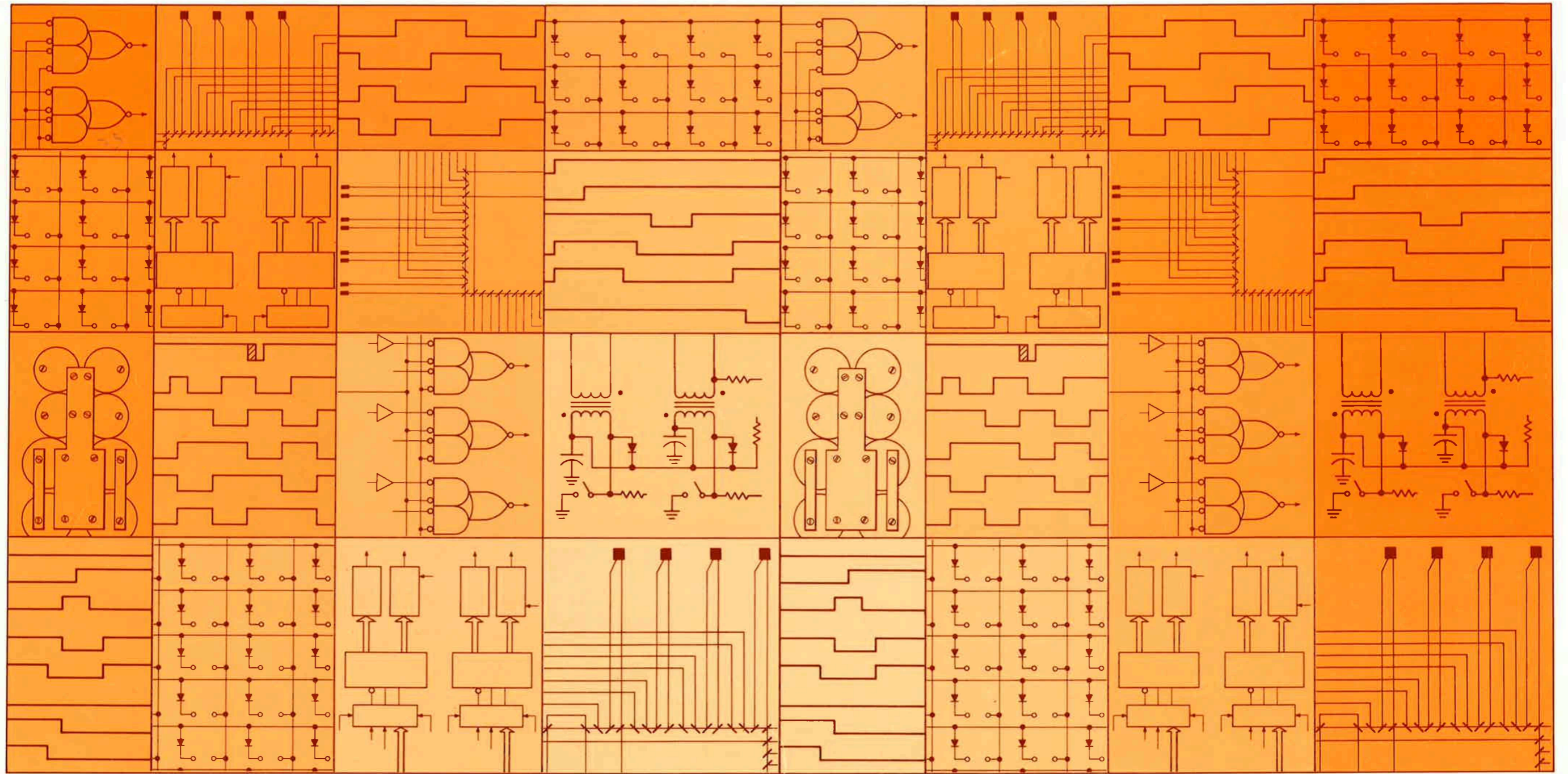


pdp8/e

pdp8/f & pdp8/m



digital

**VC8-E point-plot
display control
engineering drawings**

This drawing and specifications, herein, are the property of Digital Equipment Corporation and shall not be reproduced or copied or used in whole or in part as the basis for the manufacture or sale of items without written permission.

MASTER DRAWING LIST

DWG. NO.	REV. LET.	NO. OF SHEETS	TITLE
C-UA-VC8-E-0	B	1	DISPLAY CONTROL VC8-E
A-PL-VC8-E-0	B	1	DISPLAY CONTROL VC8-E (PL)
E-CS-M869-0-1	#	2	VC8 PT PLOT DSPL CONT (CONT)
E-CS-M885-0-1	#	2	VC8 PT PLOT DSPL CONT (D/A)
A-SP-VC8-E-1	REF	17	ENGINEERING SPECIFICATIONS
A-SP-VC8-E-2	REF	8	ACCEPTANCE PROCEDURES
A-AL-VC8-E-3		2	ACCESSORY LIST (VC8-E)
D-UA-BC01K-0-0 *	REF	1	VR14 SCOPE CABLE
D-UA-BC01L-0-0	REF	1	602 SCOPE CABLE
D-IA-7008491-0-0	REF	1	RM503 SCOPE CABLE
D-IA-7008499-0-0 *	REF	1	USER SPECIFIED SCOPE CABLE
D-IA-7008977-0-0	REF	1	611 STORAGE SCOPE CABLE
*INCLUDED IN A-ML-LAB8-E			

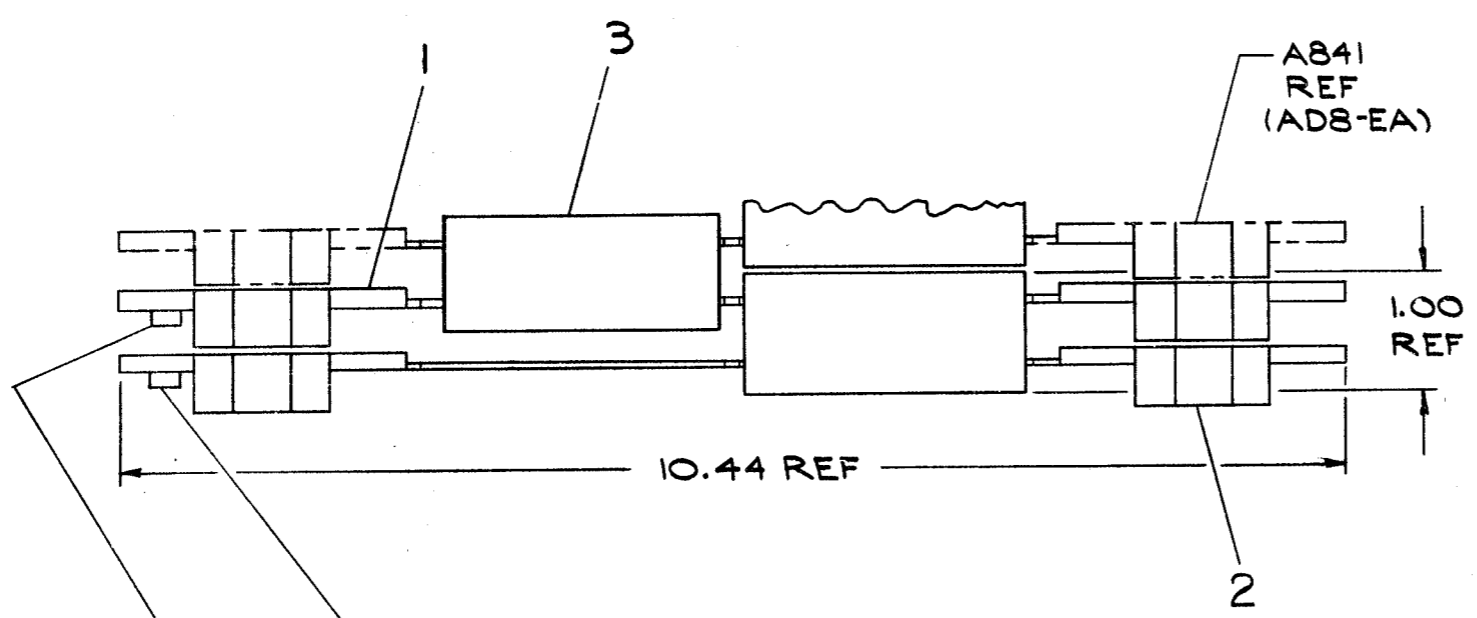
REVISIONS				DRN.	DATE	digital EQUIPMENT CORPORATION <small>MAYNARD, MASSACHUSETTS</small>	TITLE
REV.	DATE	CHG. NO.	APP'D.	D. CRABBE	4-1-71		
A	11/71	00001	A.W.	<i>D.K. Galbe</i>	4-28-71	DISPLAY CONTROL VC8-E	
B	1/72	LAB8E-13	G.B.	<i>D.K. Galbe</i>	4-28-71		
C	8/72	VC8E-2	A.C.F.	<i>M. Calomby</i>	4-28-71		
				PROD. ENG.	DATE		
				PROD.	DATE		
				FIRST USED ON			
				LAB8-E			
				SCALE			
				SHEET 1 OF 1			
				DIST.			
				SIZE	CODE	NUMBER	REV.
				A	ML	VC8-E	C

This drawing and specifications, herein, are the property of Digital Equipment Corporation and shall not be reproduced or copied or used in whole or in part as the basis for the manufacture or sale of items without written permission.

NOTES:

1. ITEM NO.1 AND ITEM NO.2, MUST ALWAYS BE FACING FRONT OF MACHINE AS SHOWN.
2. NO CONNECTION WHEN AD8-EA IS USED.
3. BC01K - VR14 OR VR20 OPTION
BC01L - USED WITH TEKTRONIX 602 OR EQUIVALENT.
7008499 - USERSPECIFIED SCOPE.
7008491 - RM503 SCOPE.
7008977 - 611 STORAGE SCOPE CABLE

D
C
B
A



USED WITH ANALOG POWER CABLE ASSY. 7008375 REF SEE NOTE #2

USED WITH BC01K, BC01L, 7008499, 7008491, 7008977 REF (SEE NOTE 3)

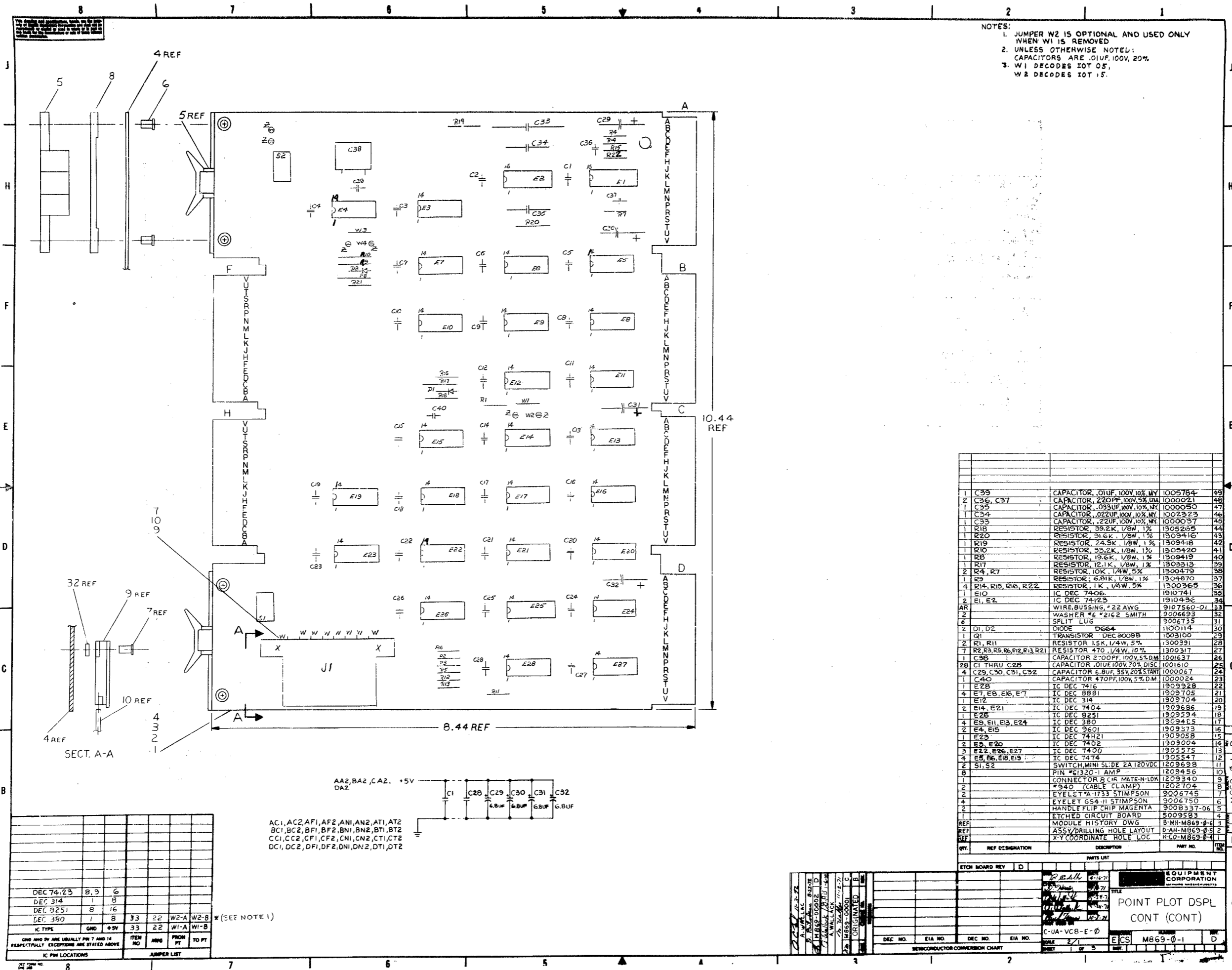
REV.	CHANGE NO.	CHK	DATE
A	00001		11-3-71
B	00002		8-25-72

A WALLACK
 BUDIAN SKY
 9-12-72

FIRST USED ON OPTION MODEL	QTY.	DESCRIPTION	PART NO.	ITEM NO.
LAB8-E				
PARTS LIST				
UNLESS OTHERWISE SPECIFIED		DRN. <i>D. Ferguson</i>	DATE 4-8-71	digital EQUIPMENT CORPORATION MAYNARD, MASSACHUSETTS TITLE DISPLAY CONTROL VC8-E
UNLESS OTHERWISE SPECIFIED		CHK'D. <i>D. Cable</i>	DATE 4-28-71	
DIMENSION IN INCHES		ENG. <i>D. Cable</i>	DATE 4-28-71	
TOLERANCES		PRD. ENG. <i>A. DeWinsky</i>	DATE 4-28-71	
DECIMALS ± .005		FRACCTIONS ± 1/64	ANGLES ± 0°30'	
MATERIAL		FINISH	SCALE	SIZE CODE C UA
+			1/1	NUMBER VC8-E-0
+			SHEET 1 OF 1	REV. B

REV. B
NUMBER
VC8-E-0
SIZE CODE
C UA

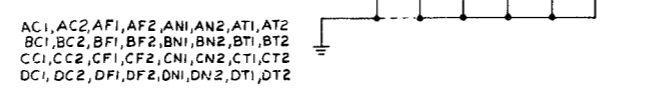
DIGITAL EQUIPMENT CORPORATION MAYNARD, MASSACHUSETTS PARTS LIST					QUANTITY / VARIATION									
MADE BY D.K. CRABBE		CHECKED <i>D.K. Crabbe</i>		SECTION										
DATE 4-1-71		DATE <i>4-28-71</i>		1										
ENG <i>D.K. Crabbe</i>		PROD <i>Paul Joyce</i>		ISSUED SECT.										
DATE <i>4-28-71</i>		DATE <i>7-29-71</i>		1										
ITEM NO.	DWG NO. / PART NO.	DESCRIPTION			1	2	3	4	5	6	7	8	9	10
1	M869	VC8 PT PLOT DSPL CONT (CONT)			1									
2	M885	VC8 PT PLOT DSPL CONT (D/A)			1									
3	B-UA-H851- ϕ - ϕ	EDGE CONNECTOR H851			2									
4	7008499 **	CABLE ASSY			1									
5	BC01K *	VR14 INTERFACE CABLE			1									
	*	TO BE SHIPPED WHEN VR14 IS INSTALLED.												
	**	TO BE SHIPPED WHEN NO CUSTOMER SPECIFIED CABLE OR VR14 IS ORDERED.												
TITLE		ASSY NO.		SIZE	CODE	NUMBER		REV.	ECO NO.					
DISPLAY CONTROL VC8-E		C-UA-VC8-E- ϕ		A	PL	VC8-E- ϕ		B	VC8E-- 00002					
		SHEET 1 OF 1		DIST.										



- NOTES:
- JUMPER W2 IS OPTIONAL AND USED ONLY WHEN W1 IS REMOVED
 - UNLESS OTHERWISE NOTED: CAPACITORS ARE .01UF, 100V, 20%
 - W1 DECODES TOT 05, W2 DECODES TOT 15.

QTY	REF DESIGNATION	DESCRIPTION	PART NO.	ITEM NO.
1	C33	CAPACITOR, .01UF, 100V, 10%, NY	1005784	49
2	C36, C37	CAPACITOR, 220PF, 100V, 5%, DM	1000021	48
1	C35	CAPACITOR, .033UF, 100V, 10%, NY	1000050	47
1	C34	CAPACITOR, .022UF, 100V, 10%, NY	1002323	46
1	C33	CAPACITOR, .22UF, 100V, 10%, NY	1000037	45
1	R18	RESISTOR, 33.2K, 1/8W, 1%	1305255	44
1	R20	RESISTOR, 31.6K, 1/8W, 1%	1309416	43
1	R19	RESISTOR, 24.3K, 1/8W, 1%	1309418	42
1	R10	RESISTOR, 33.2K, 1/8W, 1%	1305420	41
1	R8	RESISTOR, 19.6K, 1/8W, 1%	1309419	40
1	R17	RESISTOR, 12.1K, 1/8W, 1%	1303313	39
2	R4, R7	RESISTOR, 10K, 1/4W, 5%	1300479	38
1	R9	RESISTOR, 6.81K, 1/8W, 1%	1304870	37
4	R14, R15, R16, R22	RESISTOR, 1K, 1/4W, 5%	1300368	36
1	E14	IC DEC 7406	1910741	35
2	E1, E2	IC DEC 74123	1910436	34
AR		WIRE, BUSSING, #22 AWG	9107560-01	33
2		WASHER #6 #2162 SMITH	9006693	32
6		SPLIT LUG	9006735	31
2	D1, D2	DIODE D664	1100114	30
2	Q1	TRANSISTOR DEC 3009B	1503100	29
2	R1, R11	RESISTOR 1.5K, 1/4W, 5%	1300391	28
7	R2, R3, R5, R6, R12, R13, R21	RESISTOR 470, 1/4W, 10%	1300317	27
1	C38	CAPACITOR 2700PF, 120V, 5%, DM	1001637	26
28	C1 THRU C28	CAPACITOR .01UF, 100V, 20%, DISC	1001610	25
4	C29, C30, C31, C32	CAPACITOR 6.8UF, 35V, 20% TANT	1000067	24
1	C40	CAPACITOR 470PF, 100V, 5%, DM	1000024	23
1	E28	IC DEC 7416	1909928	22
4	E7, E8, E6, E7	IC DEC 8881	1909705	21
1	E12	IC DEC 314	1909704	20
2	E14, E21	IC DEC 7404	1909686	19
1	E25	IC DEC 8251	1909594	18
4	E9, E11, E13, E24	IC DEC 380	1303465	17
2	E4, E15	IC DEC 9601	1909373	16
1	E23	IC DEC 74H21	1909058	15
2	E5, E20	IC DEC 7402	1909004	14
3	E22, E26, E27	IC DEC 7400	1905575	13
4	E6, E8, E18, E19	IC DEC 7474	1905547	12
2	S1, S2	SWITCH, MINI SLIDE 2A 120VDC	1209698	11
8		PIN #61320-1 AMP	1209456	10
2		CONNECTOR 8 CIR MATE-N-LOK	1209340	9
2		#940 (CABLE CLAMP)	1202704	8
2		EYELET #A-1733 STIMPSON	9006745	7
4		EYELET GS4-J1 STIMPSON	9006750	6
2		HANDLE FLIP CHIP MAGENTA	9008337-06	5
REF		ETCHED CIRCUIT BOARD	5009583	4
REF		MODULE HISTORY DWG	8-MH-M869-0-6	3
REF		ASSY DRILLING HOLE LAYOUT	8-AH-M869-0-5	2
REF		X-Y COORDINATE HOLE LOC	8-CO-M869-0-4	1

IC PART LOCATIONS	JUMPER LIST
DEC 74-23 8 9 6	
DEC 314 1 8	
DEC 8251 8 16	
DEC 380 1 8	
IC TYPE	GND +5V
	33 22 W2-A W2-B
	33 22 W1-A W1-B



AA2, BA2, CA2, +5V
DA2

AC1, AC2, AF1, AF2, AN1, AN2, AT1, AT2
BC1, BC2, BF1, BF2, BN1, BN2, BT1, BT2
CC1, CC2, CF1, CF2, CN1, CN2, CT1, CT2
DC1, DC2, DF1, DF2, DN1, DN2, DT1, DT2

ETCH BOARD REV D

EQUIPMENT CORPORATION

POINT PLOT DSPL
CONT (CONT)

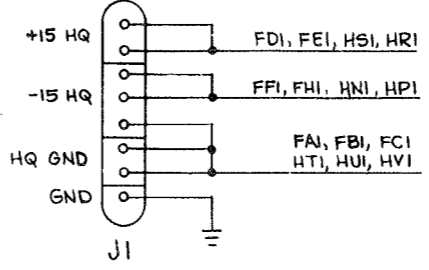
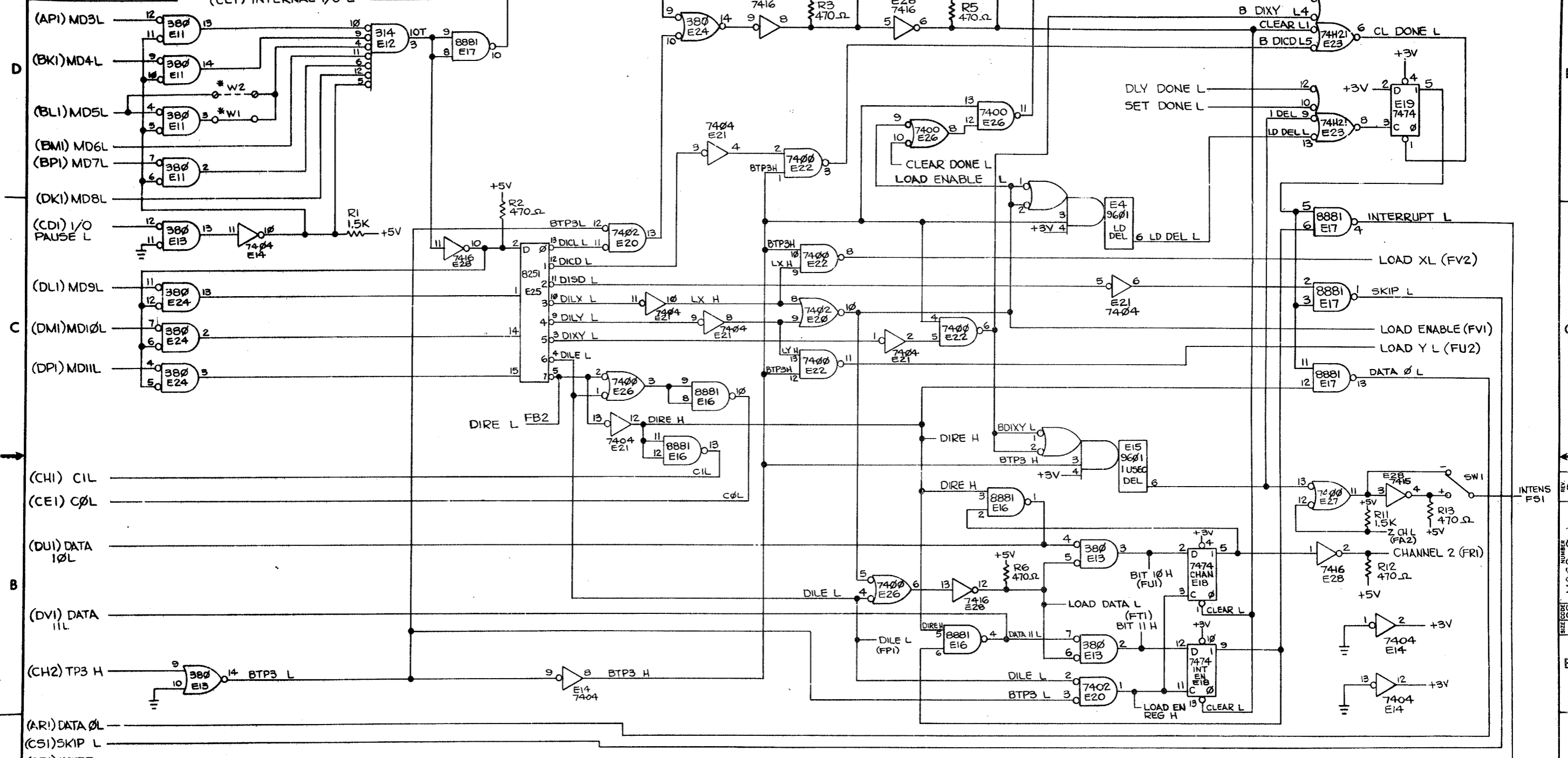
C-UA-VCR-E-0

DEC NO. EIA NO. DEC NO. EIA NO.

SOLE 271

SHEET 1 OF 5

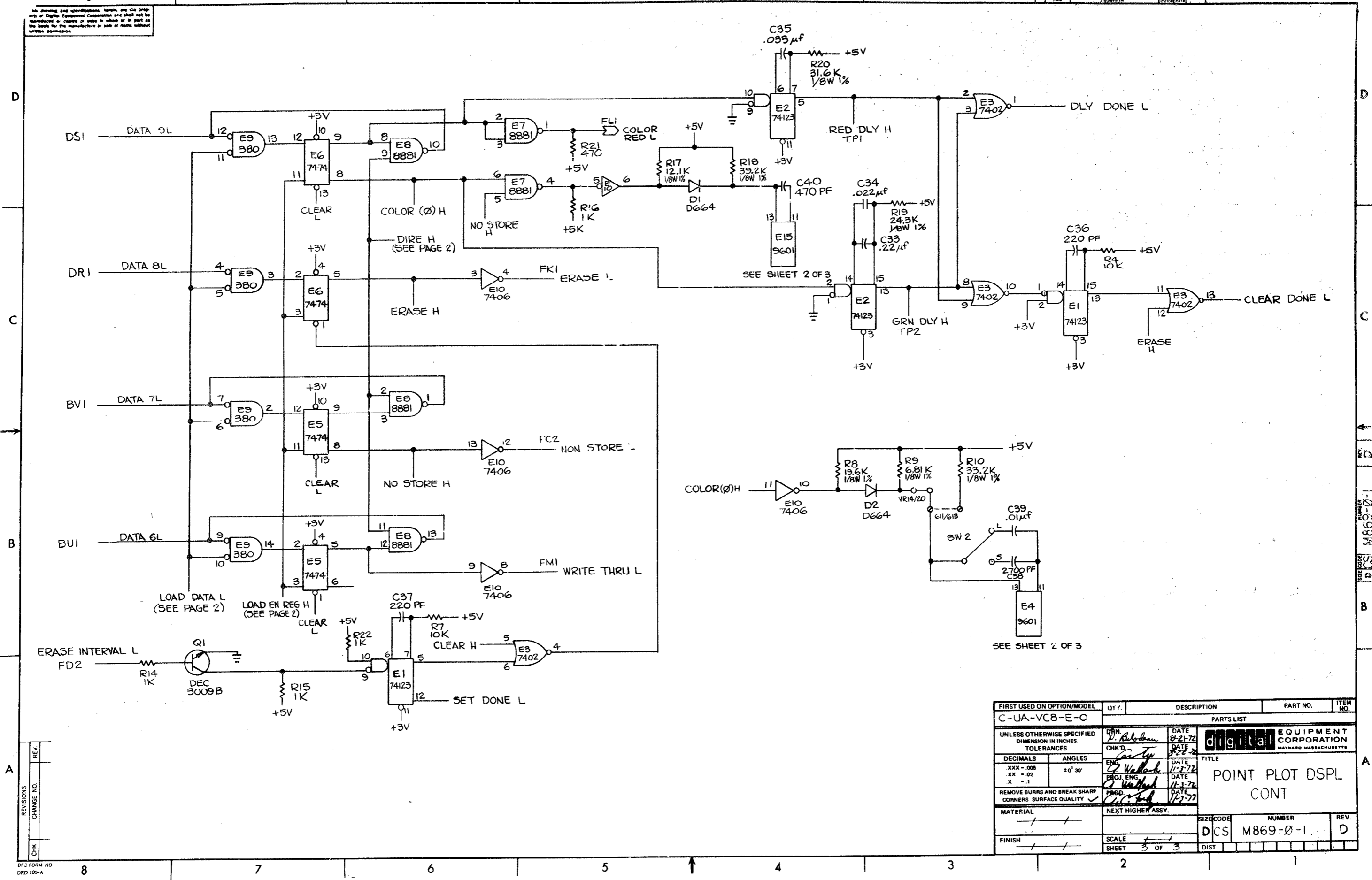
This drawing and specifications, herein, are the property of Digital Equipment Corporation and shall not be reproduced or copied in whole or in part in any form for the manufacture or sale of items without written permission.



FIHST USED ON OPTION/MODEL	QTY.	DESCRIPTION	PART NO.	ITEM NO.
C-UA-VCB-E-0				
UNLESS OTHERWISE SPECIFIED DIMENSION IN INCHES. TOLERANCES				
DECIMALS	ANGLES	PARTS LIST		
.XXX = .005	10° 30'	digital EQUIPMENT CORPORATION MAYNARD, MASSACHUSETTS		
.XX = .02		TITLE		
.X = .1		POINT PLOT DSPL CONT (CONT)		
REMOVE BURRS AND BREAK SHARP CORNERS SURFACE QUALITY				
MATERIAL				
NEXT HIGHER ASSY.				
FINISH				
SCALE		SIZE CODE	NUMBER	REV.
SHEET 2 OF 3		D CS	M869-0-1	D

REV.	CHANGE NO.	DESCRIPTION

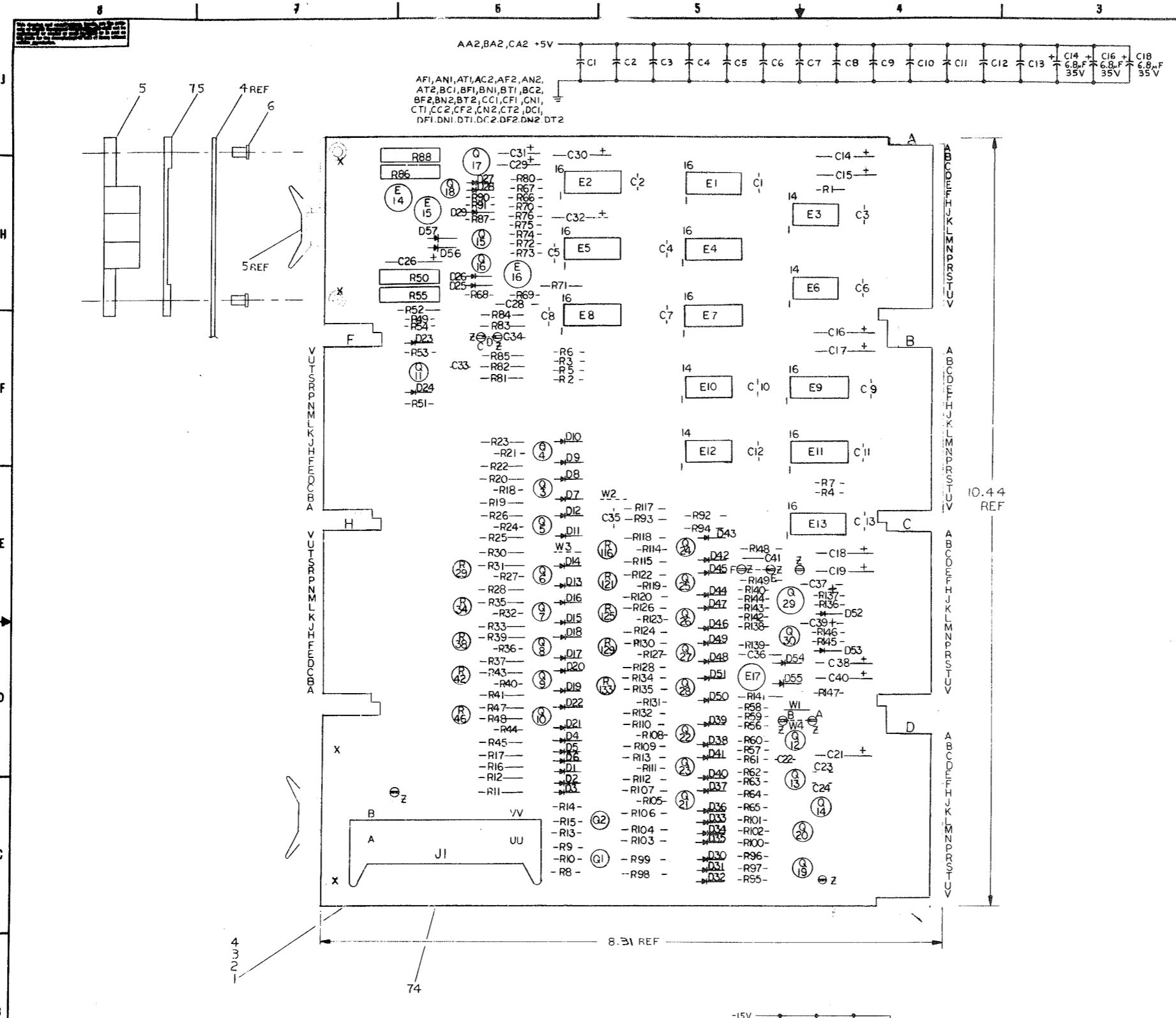
All drawings and specifications herein are the property of Digital Equipment Corporation and shall not be reproduced or copied in whole or in part or the same for the manufacture or sale of parts without written permission.



REV.	
CHK	
REVISIONS	CHANGE NO.

FIRST USED ON OPTION/MODEL	QTY	DESCRIPTION	PART NO.	ITEM NO.
C-UA-VC8-E-0		PARTS LIST		
UNLESS OTHERWISE SPECIFIED DIMENSION IN INCHES TOLERANCES	DATE 8-21-72	digital EQUIPMENT CORPORATION MAYNARD MASSACHUSETTS		
DECIMALS .XXX - .006	DATE 8-28-72	TITLE POINT PLOT DSPL CONT		
ANGLES 10° 30'	DATE 11-3-72	PROJ ENG 11-3-72		
REMOVE BURRS AND BREAK SHARP CORNERS SURFACE QUALITY	DATE 11-3-72	PRGD 11-3-72		
MATERIAL	NEXT HIGHER ASSY.	SIZE CODE	NUMBER	REV.
FINISH	SCALE	DCS	M869-0-1	D
	SHEET 3 OF 3	DIST		

REV. D
M869-0-1



- NOTES:
- UNLESS OTHERWISE NOTED: CAPACITORS ARE .01, F, 100V, 20%. TRANSISTORS ARE DEC 3009B. DIODES ARE DEC 664.
 - HQ GROUND IS INDICATED BY:
 - LOGIC GROUND IS INDICATED BY:
 - DIODES MARKED IN 7H MAY BE HP 5082-2800

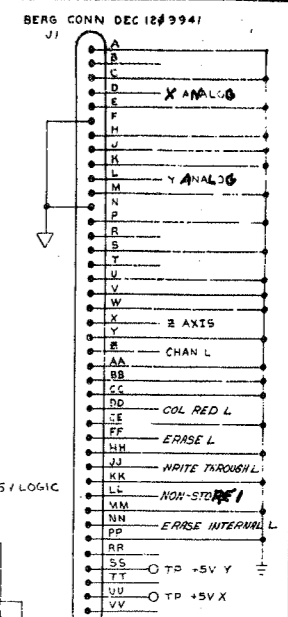
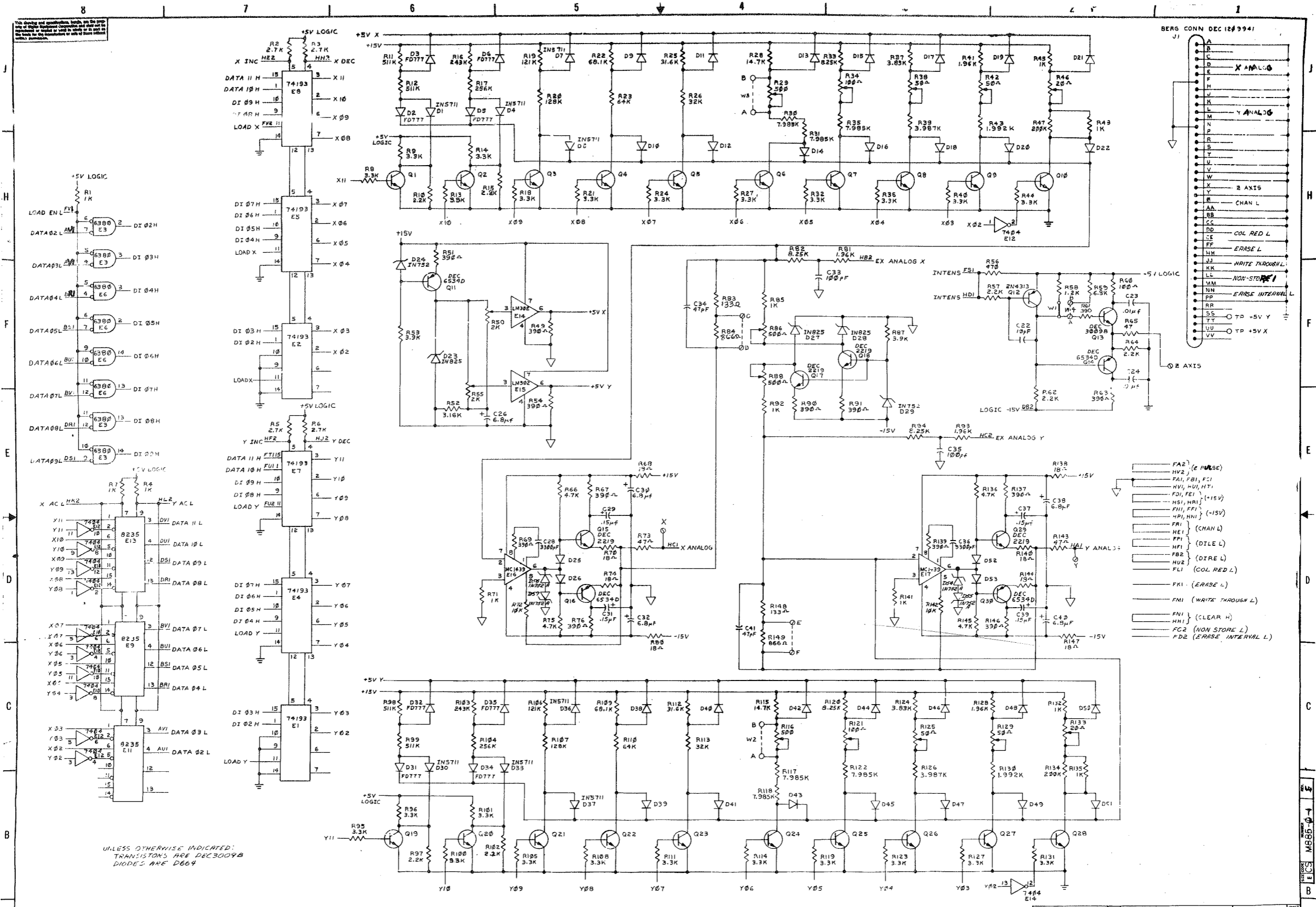
QTY.	REF DESIGNATION	DESCRIPTION	PART NO.
2	J1	SPACER (CABLE CLAMP)	1202704
1	J1	CONNECTOR BERG	1209941
9		SPLIT LVG	9006735
AR		WIRE, BUSSING, #22 AWG	9107560-01
2	R29, R116	POT 500K 1/2W 10%	1309150-09
2	R34, R121	POT 100K 1/2W 20% 62PR	1309150-05
2	R46, R133	POT 20K 1/2W 20% 62PR	1309150-02
2	R50, R55	POT 2K 3/4W 10% 76PR	1309143-08
2	R56, R59	POT 500K 3/4W 10% 76PR	1309143-06
2	R38, R42, R125, R129	POT 50K 1/2W 20% 62PR	1309150-11
13	R48, R51, R61, R63, R67, R69, R70, R71, R72, R73, R74, R75, R76, R77, R78, R79, R80, R81, R82, R83, R84, R85, R86, R87, R88, R89, R90, R91, R92, R93, R94, R95, R96, R97, R98, R99	RES 330K 1/4W 5%	1300309
1	R54	RES 470K	1300316
8	R67, R74, R80, R83, R84, R85, R86, R87, R88, R89, R90, R91, R92, R93, R94, R95, R96, R97, R98, R99	RES 18K	1302124
1	R58	RES 1.2K	1301320
2	R72, R142	RES 10K	1300479
4	R66, R75, R136, R145	RES 4.7K	1300447
2	R53, R87	RES 3.9K	1300444
7	R57, R62, R64, R97, R112, R101, R105	RES 2.2K	1300417
3	R73, R143, R65	RES 4.7K	1300202
4	R2, R3, R5, R6	RES 2.7K	1300426
3	R1, R4, R7	RES 1K	1300365
1	R59	RES 6.8K	1301423
1	R60	RES 100K	1300229
24	R8, R9, R13, R14, R15, R16, R17, R18, R19, R20, R21, R22, R23, R24, R25, R26, R27, R28, R29, R30, R31, R32, R33, R34, R35, R36, R37, R38, R39, R40, R41, R42, R43, R44, R45, R46, R47, R48, R49, R50, R51, R52, R53, R54, R55, R56, R57, R58, R59, R60, R61, R62, R63, R64, R65, R66, R67, R68, R69, R70, R71, R72, R73, R74, R75, R76, R77, R78, R79, R80, R81, R82, R83, R84, R85, R86, R87, R88, R89, R90, R91, R92, R93, R94, R95, R96, R97, R98, R99	RES 3.3K 1/4W 5%	1300439
1	R52	RES 3.16K 1/8W 1% MF	1303045
2	R25, R112	RES 31.6K	1309416
2	R37, R124	RES 3.83K	1309413
2	R84, R149	RES 866K	1309293
2	R17, R104	RES 256K	1305517
2	R20, R107	RES 128K	1305516
2	R23, R110	RES 64K	1305515
2	R26, R113	RES 32K	1305514
2	R47, R134	RES 200K	1305336
4	R11, R12, R98, R99	RES 511K	1305323
2	R19, R106	RES 121K	1305255
2	R22, R109	RES 68.1K	1305252
4	R48, R85, R92, R135	RES 1K	1304865
2	R16, R103	RES 243K	1304843
4	R41, R81, R93, R128	RES 1.96K	1304833
6	R30, R31, R35, R117, R118, R122	RES 7.985K	1303206
4	R45, R132, R141, R71	RES 1K	1303114
2	R83, R148	RES 133K	1303038
2	R28, R115	RES 14.7K	1302941
2	R39, R126	RES 3.987K	1302478
2	R43, R130	RES 1.992K	1302677
4	R33, R82, R94, R120	RES 8.25K 1/8W 1% MF	1309420
32	D9, D22, D25, D26, D38, D51	DIODE D664	1100114
3	D23, D27, D28	DIODE IN825	1101385
8	D24, D29, D54, D57	DIODE IN752A	1102808
8	D2, D3, D5, D6, D31, D32, D34, D35	DIODE FD777	1103041
8	D1, D4, D7, D8, D30, D33, D36, D37	DIODE IN5711	1100603
1	C22	CAP 10PF 100V 5% DM	1000006
2	C34, C41	CAP 47PF 100V 5% DM	1000011
12	C14, C19, C21, C26, C32, C30, C38, C40	CAP 6.8F 35V 20% TANT	1000067
15	C1, C3, C23, C24	CAP .01F 100V 20% DISC	1001610
4	C29, C31, C37, C39	CAP .15F 35V 10% TANT	1002190
2	C28, C36	CAP 3300PF 100V 10%	1005116
2	C33, C35	CAP 100PF 100V 5% DM	1000016
4	Q15, Q17, Q18, Q29	TRANS DEC 2219	1501881
21	Q1, Q10, Q13, Q19, Q28	TRANS DEC 3009B	1503100
4	Q11, Q14, Q16, Q30	TRANS DEC 6534D	1503409
1	Q12	TRANS 2N4313	1505715
2	E14, E15	I.C. LM302	1909343
2	E10, E12	I.C. DEC 7404	1909686
2	E16, E17	I.C. MC1439	1909761
3	E9, E11, E13	I.C. DEC 8235	1909935
2	E3, E6	I.C. DEC 6380	1909971
6	E1, E2, E4, E5, E7, E8	I.C. DEC 74193	1910018
4		EYELET GS-4-11 STIMPSON	9006750
2		HANDLE FLIP CH P MAGENTA	9038317-06
2		ETCHED CIRCUIT BOARD	5009625
REF		MODULE HISTORY DWG	B-MH-M885-0-6
REF		ASSY/DRILLING HOLE LAYOUT	D-AH-M885-0-3
REF		X-Y COORDINATE HOLE LOC	K-CO-M885-0-4

IC PART LOCATIONS	ITEM NO	AWG	FROM PT	TO PT
DEC 6380	1	8	76	22 W4-A W4-B
DEC 74193	8	16	76	22 W3-A W3-B
				22 W2-A W2-B
				22 W1-A W1-B

2N4313	1				
IN5711	1				
DEC6534D	MPS6534				
DEC3009B	ZN3009B				
DEC 2219	ZN2219				
FD777	SAME	IN752A			
D664	IN3606	IN825	SAME	C-UA-VCB-E-0	
DEC NO.	EIA NO.	DEC NO.	EIA NO.		

SEMICONDUCTOR CONVERSION CHART

EQUIPMENT CORPORATION
 TITLE
POINT PLOT D/A
 SECT. 2 CONT



REVISIONS
 CHANGE NO.
 DATE

UNLESS OTHERWISE INDICATED:
 TRANSISTORS ARE DEC3004B
 DIODES ARE D664

FIRST USED ON OPTION/MOD	QTY	DESCRIPTION	PART NO.	ITEM NO.
LAB 8/E				
UNLESS OTHERWISE SPECIFIED				
DIMENSION IN INCHES				
TOLERANCES				
DECIMAL FRACTIONS ANGLES				
FRACTIONS ANGLES				
REMOVE BURRS AND BREAK SHARP CORNERS				
MATERIAL				
FINISH				
SCALE NONE				
SHEET 2 OF 2				

DATE	BY	CHKD	APP'D	TITLE
7-2-77				POINT PLOT D/A
7-3-77				SPEC. 2 CONN

REVISION	DESCRIPTION	DATE
1		
2		

