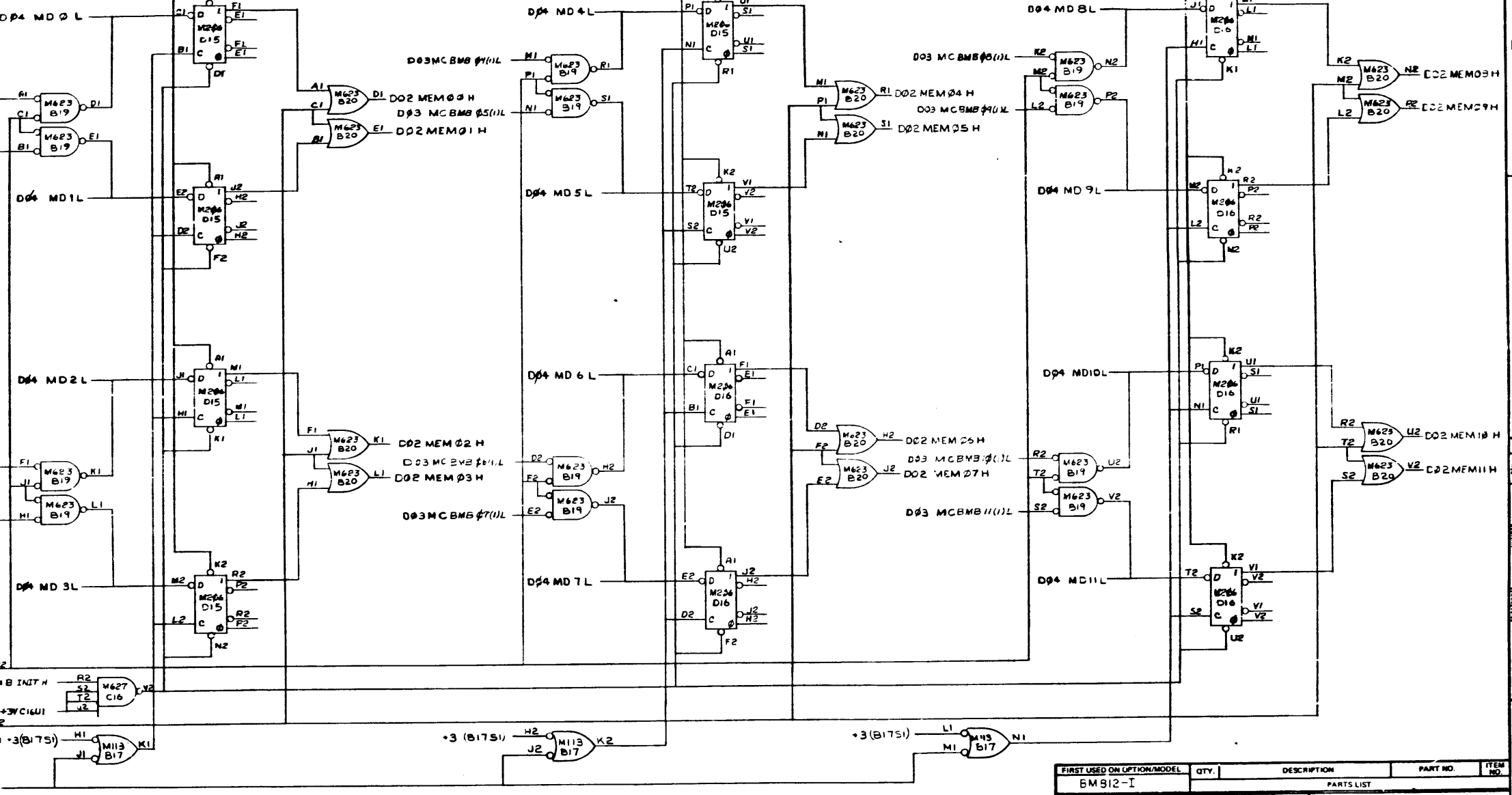


TITLE	SHEET	OF	SIZE	CODE	NUMBER	REV
BM812-I ASSY	SHEET	20f	4	B DD	BM812-I	B

This drawing and associated documents herein are the property of Digital Equipment Corporation and shall not be reproduced or transmitted in any form or by any means, electronic, mechanical, photocopying, recording, or by any information storage and retrieval system, without the prior written permission of Digital Equipment Corporation.

DIGITAL EQUIPMENT CORPORATION

D01 +3V(BITVI)



REV
CHANGE NO
CHK
REC FORM NO
DSD 88-B

FIRST USED ON OPTION/MODEL	QTY.	DESCRIPTION	PART NO.	ITEM NO.
BM812-I				
UNLESS OTHERWISE SPECIFIED DIMENSION IN INCHES TOLERANCES		DATE	PARTS LIST	
DECIMALS	ANGLES	DATE	TITLE	
JDK - 200	± 0.00	DATE	MD BUFFER	
JX - 20	± 0.01	DATE	BM812-I	
JT - 1		DATE	D02	
REMOVE BURRS AND BREAK SHARP CORNERS SURFACE QUALITY		DATE	REV.	
MATERIAL		DATE	REV.	
NEXT HIGHER ASSY.		DATE	REV.	
FINISH		DATE	REV.	
SCALE		DATE	REV.	
SHEET OF 1		DATE	REV.	
DIST		DATE	REV.	

DIGITAL EQUIPMENT CORPORATION
BM812-I-3

The drawing and specifications herein are the property of Digital Equipment Corporation and shall not be reproduced or used in whole or in part as the basis for the manufacture of any of those articles without written permission of Digital Equipment Corporation.

DIGITAL EQUIPMENT CORPORATION

D

C

B

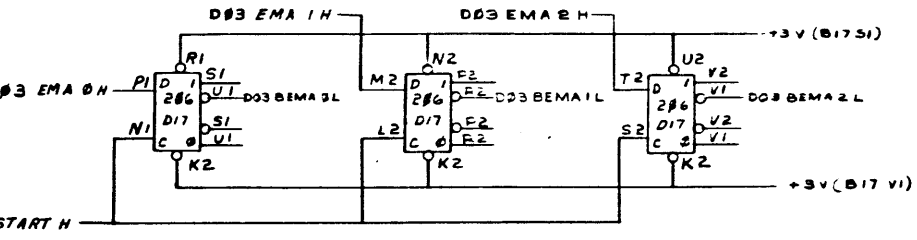
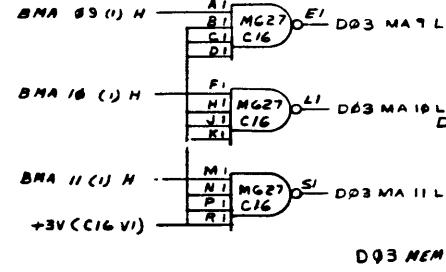
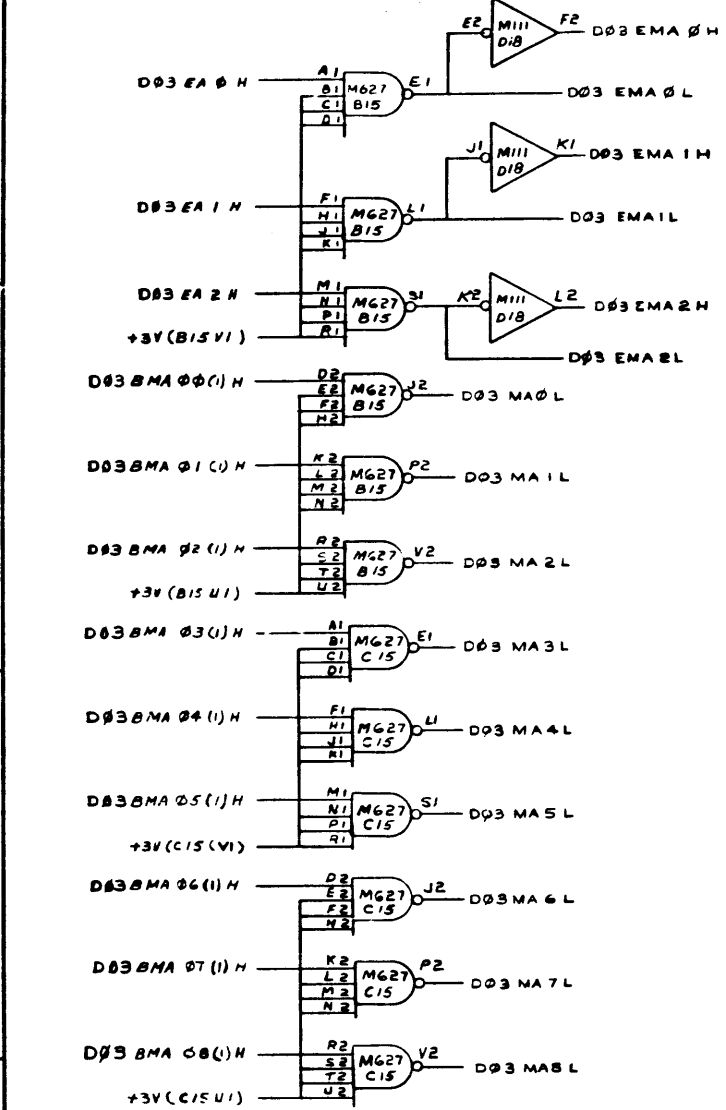
A

D

C

B

A



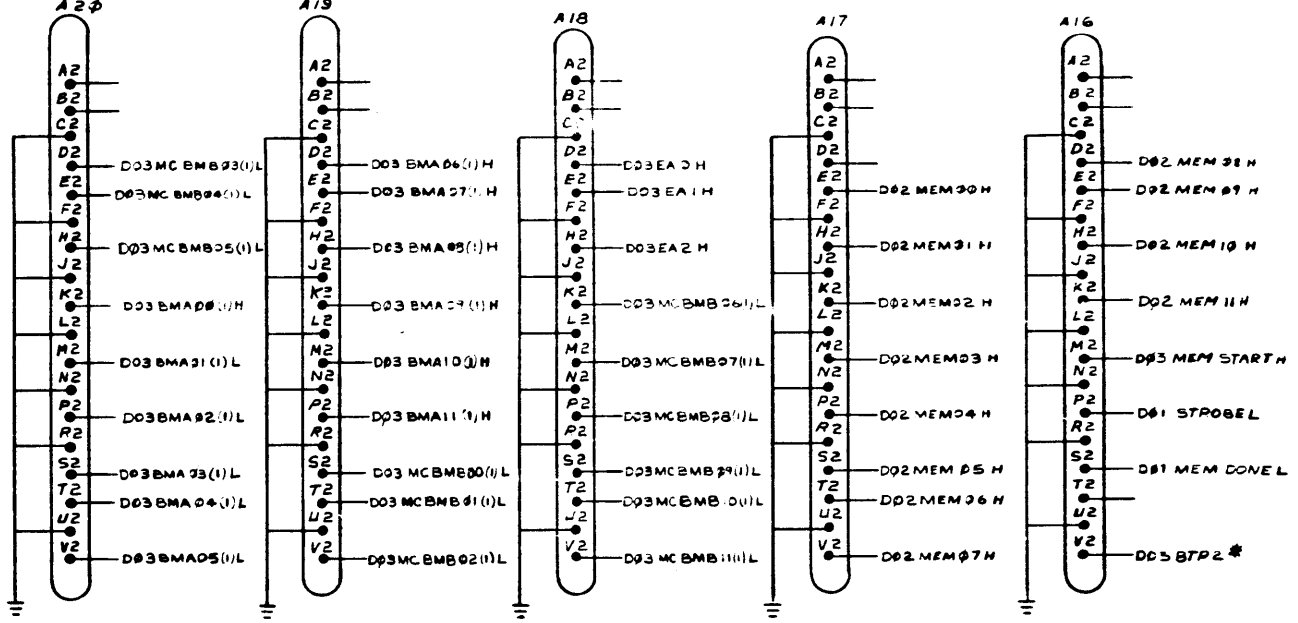
PDP 8I (H01)
PDP 12 (N23)

PDP 8I (H02)
PDP 12 (N21)

PDP 8I (H03)
PDP 12 (N22)

PDP 8I (H04)
PDP 12 (N23)

PDP 8I (H05)
PDP 12 (N24)



NOTE:
* FOR PDP 12 THIS SIGNAL IS MEM TP 3 H

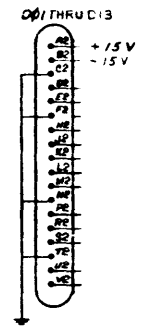
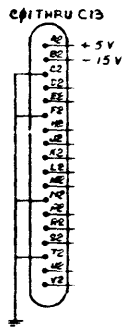
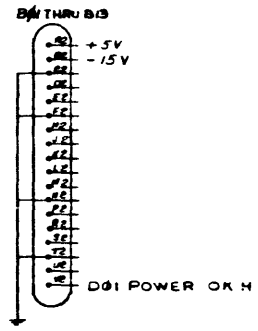
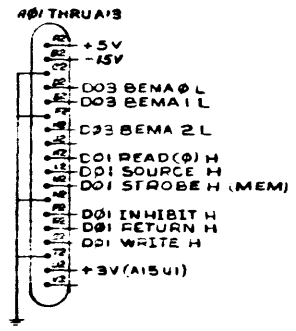
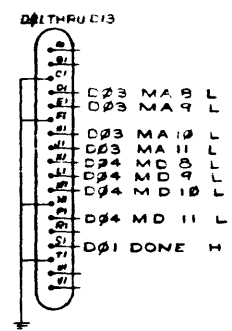
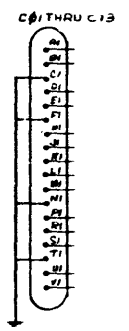
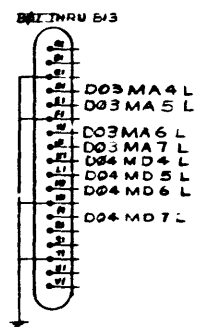
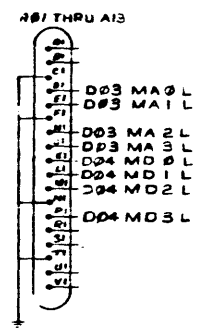
REV. NO.	REV.
CHANGE NO.	REV.
CHK	REV.

FIRST USED BY	DATE	QTY	DESCRIPTION	PART NO.	ITEM NO.
EM812-I					
UNLESS OTHERWISE SPECIFIED					
TOLERANCES					
DIMENSIONS FRACTIONS DECIMALS					
MATERIAL					
FINISH					
TITLE					
PARTS LIST					
digital EQUIPMENT CORPORATION					
MEMORY BUS CABLES AND BUFFERS					
SIZE CODE					
NUMBER					
REV					
SCALE					
SHEET					
OF					
DST					

PART NO. EM812-I-1

This drawing and specifications, herein, are the property of Digital Equipment Corporation and shall not be reproduced or copied in whole or in part, or be loaned for the manufacturing of any of these related or other equipment without the written permission of Digital Equipment Corporation.

REV. NO. 1
 CHANGE NO. 1
 REV. 1



FIRST USED ON OPTION/MODEL	QTY.	DESCRIPTION	PART NO.	ITEM NO.
BM812-I				
UNLESS OTHERWISE SPECIFIED DIMENSION IN INCHES TOLERANCES				
DECIMALS	ANGLES	ENG.	DATE	TITLE
.001 - .005	±.005	CHK'D	5.11.76	EXPANDED OMN. BUS 8K MEMORY
.005 - .010	±.010	PROJ'G	5.11.76	
.010 - .020	±.020	PROD'G	5.11.76	
.020 - .050	±.050	DATE	5.11.76	
REMOVES BURRS AND BREAK SHARP CORNERS SURFACE QUALITY				
MATERIAL	NEXT HIGHER ASSY.	SCALE	SIZE CODE	NUMBER
	A-PL8M812-I-2	OF	D10	BM812-I-5
FINISH		SHEET	DIST	REV.
				D04

REV. NO. 1
 CHANGE NO. 1
 REV. 1
 BM812-I-5

**DIGITAL EQUIPMENT CORPORATION
MAYNARD, MASSACHUSETTS**

ENGINEERING SPECIFICATION

DATE 7/25/74

TITLE **BM812-I ENGINEERING SPECIFICATION**

REVISIONS

REV	DESCRIPTION	CHG NO	ORIG	DATE	APPD BY	DATE
A	ECO CHANGE	BM812-I-00002	LEARSON	6-75	<i>WZ</i>	6-75

••

ENG <i>Jack Learson</i>	APPD <i>Harry Meyer</i>	SIZE A	CODE SP	NUMBER BM812-I-7	REV A
-------------------------	-------------------------	--------	---------	------------------	-------

DEC 16-(102)-1078A-R073
DRA 107A

SHEET 1 OF 3

ENGINEERING SPECIFICATION

000000

CONTINUATION SHEET

TITLE

BM812-I

GENERAL DESCRIPTION

The BM812-I is a memory expansion box that is capable of expanding either a PDP8I or PDP12 from 8K to 32K. This is accomplished by plugging in MM8E type stacks, to a wired assembly. The BM812-I is capable of handling a mixture of 8K (MM8EJ) or 4K (MM8EH) memories upto a total of three stacks. The Basic PDP8I or PDP12 must contain the extended memory control and one extra field (8K of memory). The BM812-I is rack mounted on slides and interfaces, via 5 BC08 cables, to the computer memory bus.

PHYSICAL DESCRIPTION

The BM812-I is housed in a standard PDPRM chassis, which contains a power supply (either 115V 60Hz, or 230V 50Hz), a wire assembly, and the logic necessary to control the MM8E memories. It is provided with chassis slides for rack mounting in the standard DEC 19-inch cabinetry.

BM812-I SELECTION:

The MM8EJ can be decoded for even number fields only. i.e., Field 0, 2, 4 or 6. If the BM812-I is to be added to a machine that already has a 4K stack, as the last on the memory bus, it must be shifted (re-decoded) so as to remain the last field on the bus. Below is a table of jumpers showing how this is achieved. When expanding with both 4K and 8K stacks, see A-SP-BM812-I-9. For Memory Selection BM812-I Jumpers:

BASIC MACHINE	M921 JUMPERS	COMMENTS
8K	W1, W6	Existing field 2 re-decoded to field 4 if BM812-I contains 8K or field 6 if contains 16K.
12K	W1, W4, W7, W10	
16K	W2, W6	existing field 4 re-decoded to field 6.
20K	W2, W5, W7, W10	
24K	W3, W6	

PROGRAMMING

The BM812-I is program compatible with existing system programs.

SIZE A	CODE SP	NUMBER BM812 I 7	REV A
--------	---------	------------------	-------

DEC FORM NO DEC 16-(101)-1022-N370
DRA 108

SHEET 2 OF 3

ENGINEERING SPECIFICATION

000000

CONTINUATION SHEET

TITLE

SPECIFICATIONS:

Power Requirements: BM812-I Self Contained
95-130 VAC
47-63 HZ
6A Maximum

185-250 VAC
47-63 HZ
3A Maximum

Power Supply: +5V at 20A
+15V at 1A
-15V at 5A

Module Type: M Series

Capacity: MM8/EJ Maximum Number 3
MM8/EH Maximum Number 3

Temperature: 0°- 50°Centigrade

Cables: 7005820-3

NOTE: Six foot cables are supplied unless otherwise specified. Maximum cable on memory bus 15 feet.

SIZE A	CODE SP	NUMBER BM812-I-7	REV A
--------	---------	------------------	-------

DEC FORM NO DEC 16-(101)-1022-N370
DRA 108

SHEET 3 OF 3

This document contains confidential proprietary information of DEC. This information shall not be disclosed to persons outside the employ of DEC, except by DEC personnel so authorized by DEC, and may be used by such other persons as the design, production or manufacture of products for DEC. Copyright © 1974 Digital Equipment Corporation.

DIGITAL EQUIPMENT CORPORATION MAYNARD, MASSACHUSETTS						
ENGINEERING SPECIFICATION				DATE 8/1/74		
TITLE BM812-I ACCEPTANCE AND INSTALLATION PROCEDURE						
REVISIONS						
REV	DESCRIPTION	CHG NO	ORIG	DATE	APPD BY	DATE
A	ECO CHANGE	BM812-00001	LEARSON	12/74	<i>[Signature]</i>	12/74
B	ECO CHANGE	BM812-I-00002	LEARSON	6/75	<i>[Signature]</i>	6-75

ENG <i>[Signature]</i>	APPD <i>[Signature]</i>	SIZE A	CODE SP	NUMBER BM812-I-9	REV B
---------------------------	----------------------------	-----------	------------	---------------------	----------

SHEET 1 OF 6

DEC FORM NO DEC 16-(381)-1022-N370
DRA 107A

ENGINEERING SPECIFICATION				CONTINUATION SHEET	
TITLE					
1.0 ACCEPTANCE					
1.1 EQUIPMENT					
1 BM812-I					
1 set of BM812-I Software					
1 PDP-8I or PDP-12 with at least 8K.					
1.2 TEST SOFTWARE					
TIME		PROGRAM			
20/MIN		Extended Memory Control Test PDP8I MD-08-DGCA-B PDP12 MD-12-DAMCA-A			
10 MIN/FIELD		MD-08-D1HA-PB Extended Memory Address			
10 MIN/FIELD		MD-08-DBMA-A Extended Memory Data and Checkerboard Test			
1.3 VIBRATION OF BM812-I					
All modules will be vibrated, excluding the MM8E, while the checkerboard diagnostic is being run.					
2.0 BM812-I SHIPPING LIST					
1 BM812-I Software Package					
1 Extender Card					
5 7005820-3 Cables					
1 BM812-I Print Set					
1 set of MM8E H or J Prints if applicable					
1 M112 MODULE IF THE BM812-I is to be an add-on to an existing machine with either 12K or 20K					

SIZE A	CODE SP	NUMBER BM812-I-9	REV B
-----------	------------	---------------------	----------

SHEET 2 OF 6

DEC FORM NO DEC 16-(381)-1022-N370
DRA 108

ENGINEERING SPECIFICATION				CONTINUATION SHEET	
TITLE					
3.0 BM812-IA 115VAC 47-63HZ					
BM812-IB 230VAC 47-63HZ					
3.1 The BM812-I must be plugged in to the switched A.C. line.					

SIZE A	CODE SP	NUMBER BM812-I-9	REV B
-----------	------------	---------------------	----------

SHEET 3 OF 6

DEC FORM NO DEC 16-(381)-1022-N370
DRA 108

ENGINEERING SPECIFICATION				CONTINUATION SHEET	
TITLE					
BM812-I CONFIGURATIONS FOR PDP-12 OR PDP8I					
4.0					
4.1.0 BASIC MACHINE PK					
C.P.		F0 F1	F2	F3 F4 F5 F6 F7	BM812-I Jumpers W1, W6
4.2.0 BASIC MACHINE 12K (See Section 5.0)					
NOTE: When the BM812-I is added to a machine that already has an external MM8I, the terminator card in the MM8I must be removed.					
4.2.1 BM812-I add on with 4K (MM8E!!)					
C.P.		F0 F1	F2	BM812-I F3 4K	BM812-I Jumpers W1, W8, W5, W10
4.2.2 BM812-I Add on with 8K (2-MM8E!!)					
C.P.		F0 F1	F2	F3 F4	BM812-I Jumpers W1, W8, W5, W10 2 - 4K STACKS
4.2.3 BM812-I Add on with 12K (3-MM8E!!) MAX Configuration					
C.P.		F0 F1	F2	F3 F4 F5	BM812-I Jumpers W1, W8, W5, W10 3 - 4K STACKS
4.2.4 BM812-I Add on with 8K (MM8E!!)					
C.P.		F0 F1	F2 F4	BM812-I F3 F4 8K	BM812-I Jumpers W1, W4, W7, W10

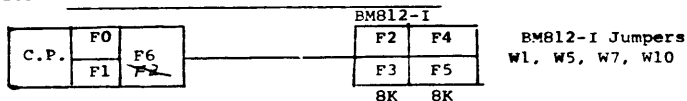
SIZE A	CODE SP	NUMBER BM812-I-9	REV B
-----------	------------	---------------------	----------

SHEET 4 OF 6

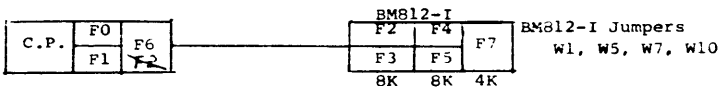
DEC FORM NO DEC 16-(381)-1022-N370
DRA 108

TITLE

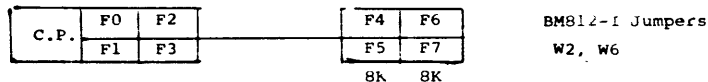
4.2.5 BM812-I Add on with 16K (2-MM8E7)



4.2.6 MAX Configuration 32K (2-MM8EJ & MM8EH)

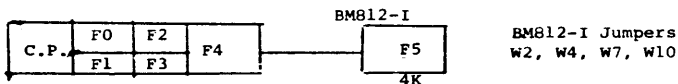


4.3.0 BASIC MACHINE 16K

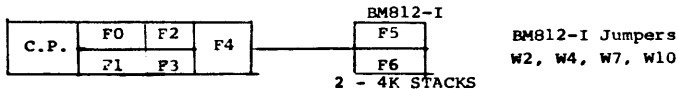


4.4.0 BASIC MACHINE 20K (See Section 5.0)

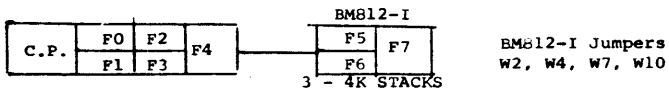
4.4.1 BM812-I Add-on with 4K (MM8EH)



4.4.2 BM812-I Add on with 8K (2-MM8EH)



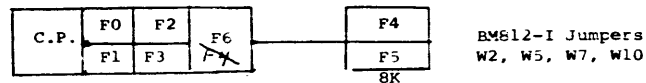
4.4.3 BM812-I Addon with 12K (3 - MM8EH) MAX Configuration



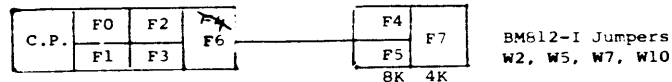
SIZE	CODE	NUMBER	REV
A	SP	BM812-I-9	B

TITLE

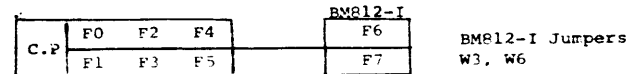
4.4.4 BM812-I Add on with 8K (MM8EJ) (See Section 5.0)



4.4.5 BM812-I Add on with MAX Configuration (MM8EJ and MM8EH) (See Section 5.0)



4.5.0 BASIC MACHINE 24K



5.0 This change must be installed in the existing MM81-A, when the BM812 is added to a machine already having either 12K or 20K of core.

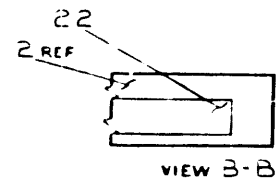
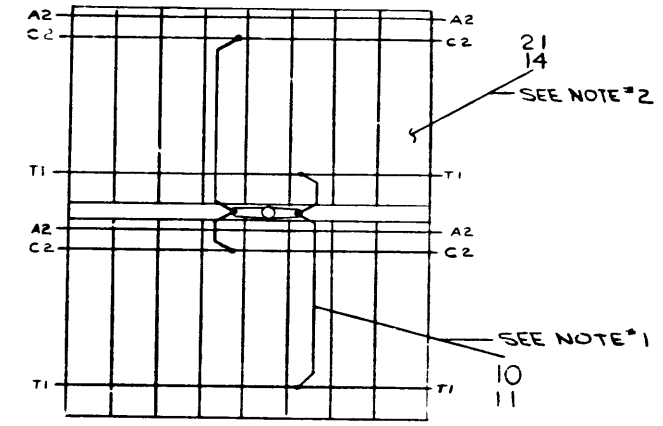
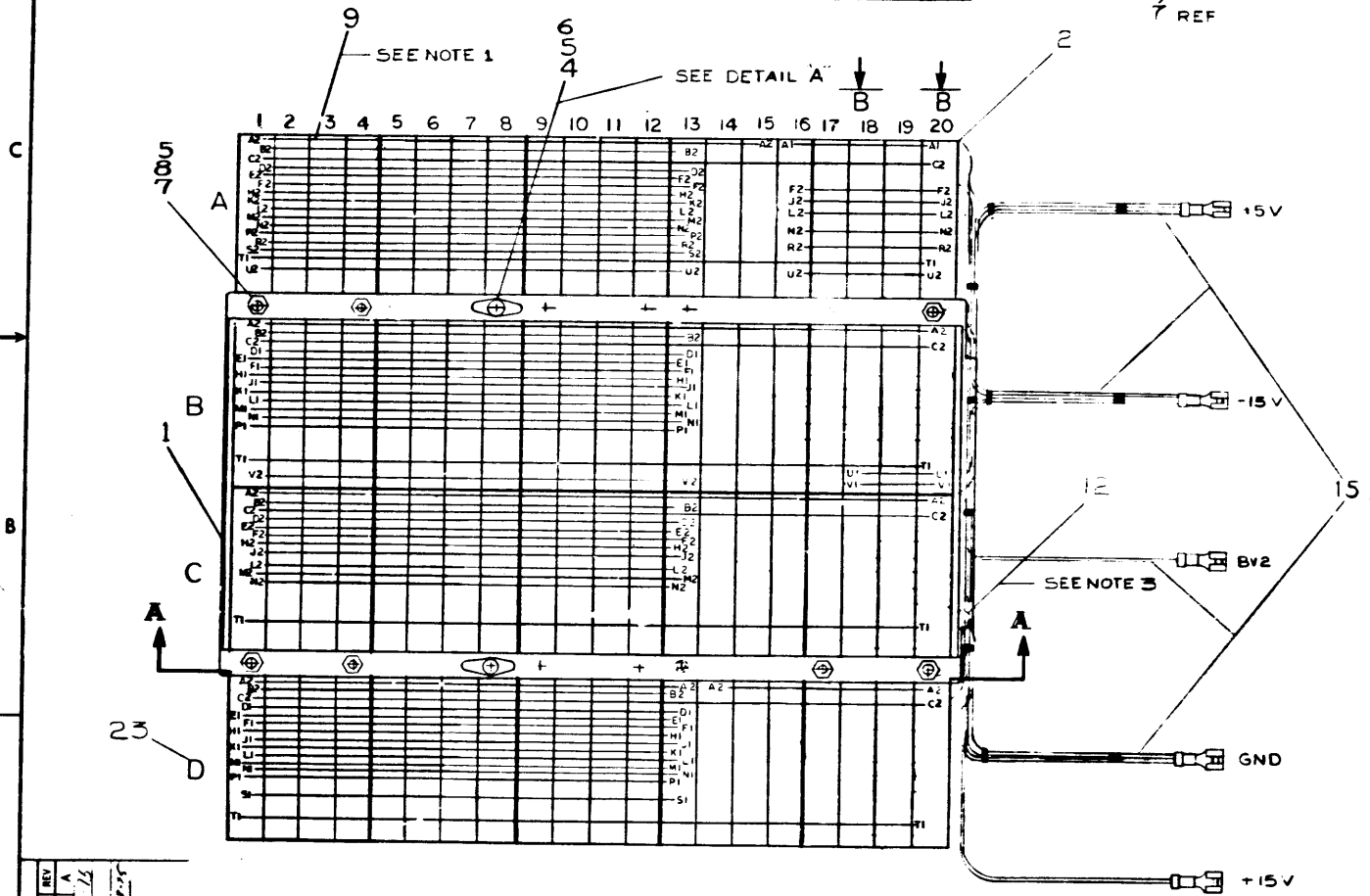
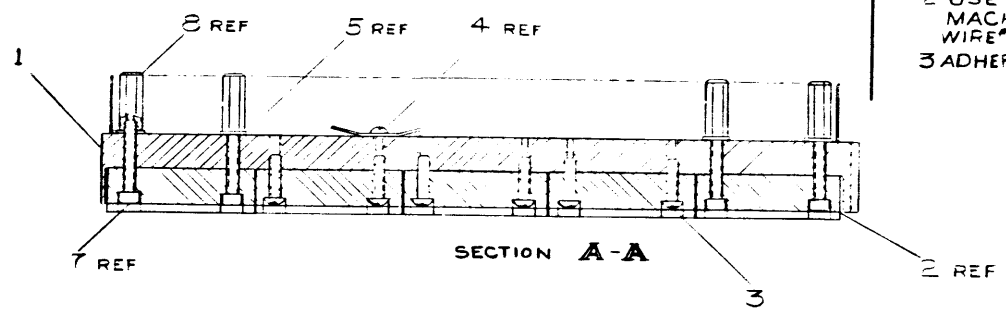
1. Add the M112 module to slot B05 of the MM81-A.
2. Use normal decoding procedure as stated on D-BS-MM8-I-A-1, to redecode the new field number if necessary.
3. Delete these wires in MM81-A: B06F2 B08C1 B08C1 B07D1
4. Add these wires to MM81-A: B07N1 B05A1 B08E2 B05B1 B05C1 B08C1 B08C1 B07D1

SIZE	CODE	NUMBER	REV
A	SP	BM812-I-9	B

This drawing and specifications, however, are the property of Digital Equipment Corporation and shall not be reproduced in whole or in part or used in any way without the express written permission of Digital Equipment Corporation. © 1974

WIRE TABLE							
ITEM NO	DESCRIPTION	FROM		TO		WIRE LENGTH	
		CONNECTION	WITH	CONNECTION	WITH		
22	BLK	A20-C2	SOLDER	GND		14"	
22	FLK	B20-C2		GND		11 1/2"	
22	BLK	C20-C2		GND		9 1/2"	
22	ELK	D20-C2		GND		8 1/2"	
22	RED	A15-A2		+5V		12 1/2"	
22	RED	B20-A2		+5V		9 1/2"	
22	RED	C20-A2		+5V		12 1/2"	
22	BLU	A13-B2		+5V		15"	
22	BLU	B13-E2		-15V		14"	
22	BLU	C13-E2		-15V		12"	
22	BLU	D13-E2		-15V		14 1/2"	
22	BLU	D13-B2		-15V		17 1/2"	
18	VEL	D13-A2		+15V		10 1/2"	
18	GRY	B13-V2	SOLDER	BV2		11"	

NOTES:
 1. CONNECTIONS ON ITEMS 9 & 11 TO BE LOCATED & SOLDERED AT MINIMUM PRACTICAL HEIGHT ABOVE BLOCKS.
 2. USE YELLOW WIRE #14 FOR MACHINE WRAPPED & BLUE WIRE #21 FOR HAND WRAFFED
 3. ADHERE TAPE TO SURFACE SHOWN



REV	CHG	NO	DATE	BY	APP
1	A	1	11/14	J. LEARSON	

UNLESS OTHERWISE SPECIFIED DIMENSION IN INCHES	DRN Lawrence	DATE 11/14	
TOLERANCES DIMS ± .005 FRACTIONS ± .002 ANGLES ± 0°30'	CHK D. J. Lawrence	DATE 11/14	
FINAL SURFACE QUALITY REMOVE BURRS AND BREAK SHARP CORNERS	ENG Lawrence	DATE 11/14	TITLE WIRED ASSY (BM82-I)
MATERIAL SEE PARTS LIST	PROJ ENG Lawrence	DATE 11/14	SIZE CODE D/A/D
FRESH	PROD Lawrence	DATE 11/14	NUMBER 7010:06-0-G
	FIRST USED ON D-UA-BM82-I-2		REV A
	SCALE 1 OF 1		DIST

DIGITAL EQUIPMENT CORPORATION
MAYNARD MASSACHUSETTS

PARTS LIST

MADE BY M. LAURENCE
DATE 6/17/74
ENG'D *D. S. ...*
DATE 6/17/74

CHECKED G. FLANDERS
DATE 7/12/74
PROD'D *...*
DATE 8/1/74

SECTION 1
ISSUED SECT. 1

ITEM NO	DWG NO. / PART NO	DESCRIPTION	QUANTITY / VARIATION
1	C-MD-7409056-0-0	OMNICASTING (BM8-1)	1
2	E-SC-1205348-0-0	288 PIN CON. BLOCK TYPE HB03	10
3	9006120-06	SCR PHIL. HD POSITIVE #8-12 X .62	12
4	9006035-1	SCR PHIL. HD PAN #8-12 X .25	2
5	9008072	WASH EXT TOOTH #8	12
6	9007597	TERM SHAKEPROOF	2
7	9007988-8	SCR SOCKET HD #8-32 X 1.00	8
8	9008334	SPACER .25APX.69LG #8-32 HOLE	8
9	1205541	BUSS STRIP	AR
10	9107265-09	#22 AWG TUBING TEP (WHT)	AR
11	9107560-01	#22 AWG BUS WIRE	AR
12	9008845	TAPE INSULATING	AR
13	9007969	CON. # 50-PIN BONES	5
14	9005740-44	#30 AWG SOLID KYNAR WIRE (YEL)	AR
15	D-1A-7011185 0-0	DC HARNESS	1
16	9107330-00	#22 AWG STRIP TEP (BLK)	44"
17	9107330-02	#22 AWG STRIP TEP (RED)	50"
18	9107330-04	#18 AWG STRIP TEP (YEL)	11"
19	9107330-06	#18 AWG STRIP TEP (GRN)	11"
20	9007031	TH. WHT#23	11"
21	9105740-66	#30 AWG SOLID KYNAR WIRE (BLD)	AR
22	A-DC-7411181-0-0	DECAL LOGIC ASSY REVISION	AR

TITLE WIRED ASSY (BM812-I)

ASSY NO D-AD-7010106 0-0
SHEET 1 OF 2

SIZE CODE A PL
NUMBER 7010106-0-0
REV BM812-I
A

DEC FORM D1C (Rev. 3-5) 1011 NSU
ORA 30

DIGITAL EQUIPMENT CORPORATION
MAYNARD MASSACHUSETTS

PARTS LIST

MADE BY M. LAURENCE
DATE 6/17/74
ENG'D *D. S. ...*
DATE 6/17/74

CHECKED G. FLANDERS
DATE 7/12/74
PROD'D *...*
DATE 8/1/74

SECTION 1
ISSUED SECT. 1

ITEM NO	DWG NO. / PART NO.	DESCRIPTION	QUANTITY / VARIATION
23	A-DC-7411181-0-0	LOGIC FRAME DECALS	AR
24	K-WI--BM812 I-R	WIRE LIST (BM812-I)	1

TITLE WIRE ASSY (BM812-I)

ASSY NO D-AD-7010106 0-0
SHEET 2 OF 2

SIZE CODE A PL
NUMBER 7010106-0-0
REV BM812-I
A


DEC FORM D1C (Rev. 3-5) 1011 NSU
ORA 110

This drawing and specifications, herein, are the property of Digital Equipment Corporation and shall not be reproduced or copied or used in whole or in part as the basis for the manufacture or sale of items without written permission. COPYRIGHT © 1974

DIGITAL EQUIPMENT CORPORATION

REV. A
 NUMBER BM812-I-8
 SIZE CODE K WL

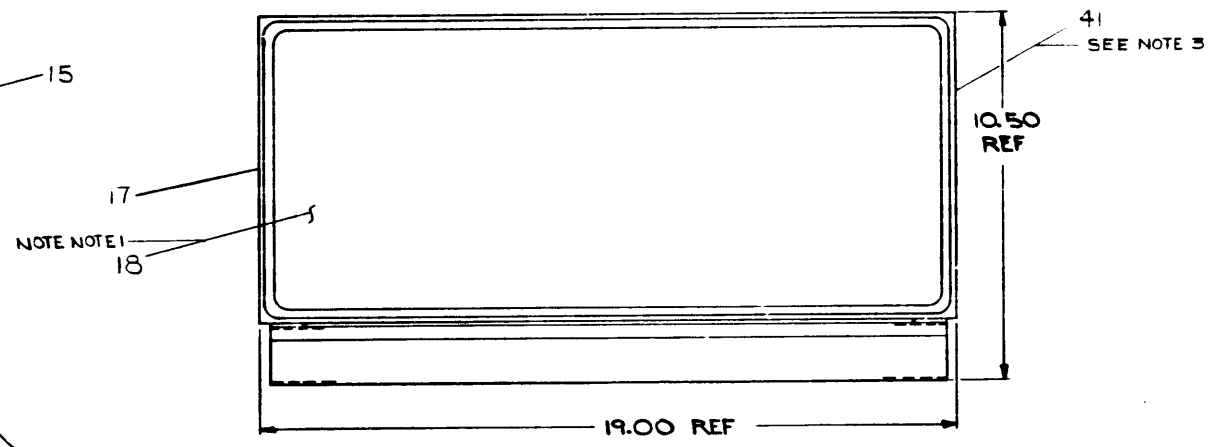
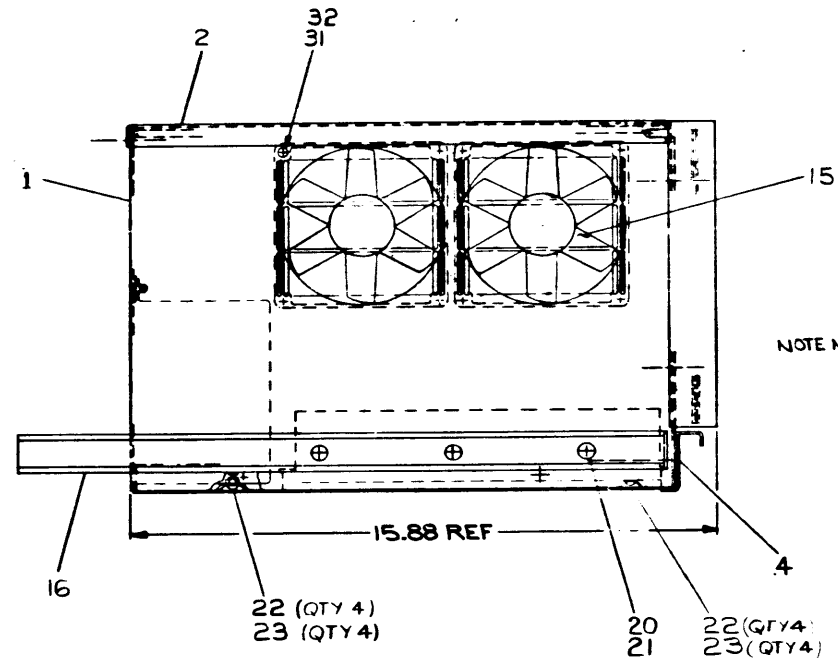
REVISIONS	CHK	CHANGE NO.	REV.
	28	BM812-I-00002	A
		6-3-78	6-6-75
		J. LEARSON	6-18-75

FIRST USED ON OPTION MODEL		QTY.	DESCRIPTION	PART NO.	ITEM NO.
BM812-I					
PARTS LIST					
DRN. <i>W.D.</i>	DATE <i>2/1/78</i>	 digital EQUIPMENT CORPORATION MAYNARD, MASSACHUSETTS			
CHK'D <i>J. Leerson</i>	DATE <i>6-27-78</i>				
ENG. <i>J. Leerson</i>	DATE <i>6-1-78</i>				
PROJ. ENG. <i>J. Leerson</i>	DATE <i>5-1-78</i>				
PROD. <i>Stammyll</i>	DATE <i>6-10-78</i>				
TITLE		WIRE LIST			
NEXT HIGHER ASSEMBLY		D-AD-7010106-0-0			
SCALE		SIZE	CODE	NUMBER	REV.
		K	WL	BM812-I-8	A
SHEET	I	OF	I	DIST.	

This drawing and specifications herein are the property of Digital Equipment Corporation and shall not be reproduced or copied in whole or in part, or be used for any purpose other than that for which it was prepared without the written permission of Digital Equipment Corporation.

LEGEND	
NUMBER	VARIATION
BM812-IA	115V
BM812-IB	230V

- NOTES:**
- ADHERE TWO PANELS (ITEM #18) TOGETHER USING ADHESIVE (ITEM #19) FOR LOCATION OF MODULES (ITEM #37) AND CABLE CONN (ITEM #39) SEE DWG D-MU-BM812-I-2
 - PLACE ITEM #41 AROUND INTAKE SLOTS USING (ITEM #2) AS TEMPLATE



REVISIONS

CHK	CHANGE NO	REV
J. J. LEARSON	1	A

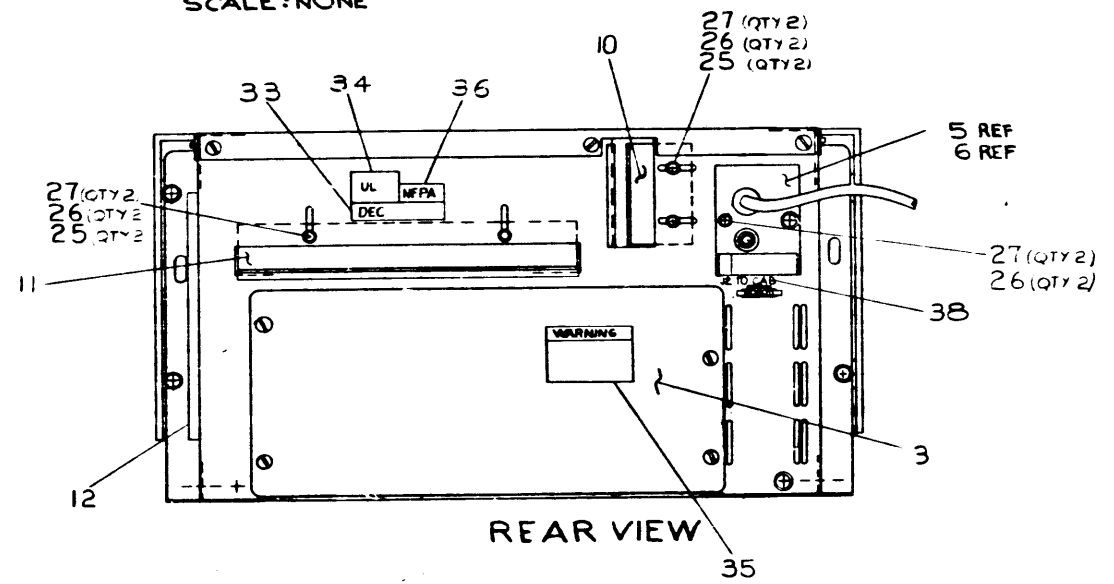
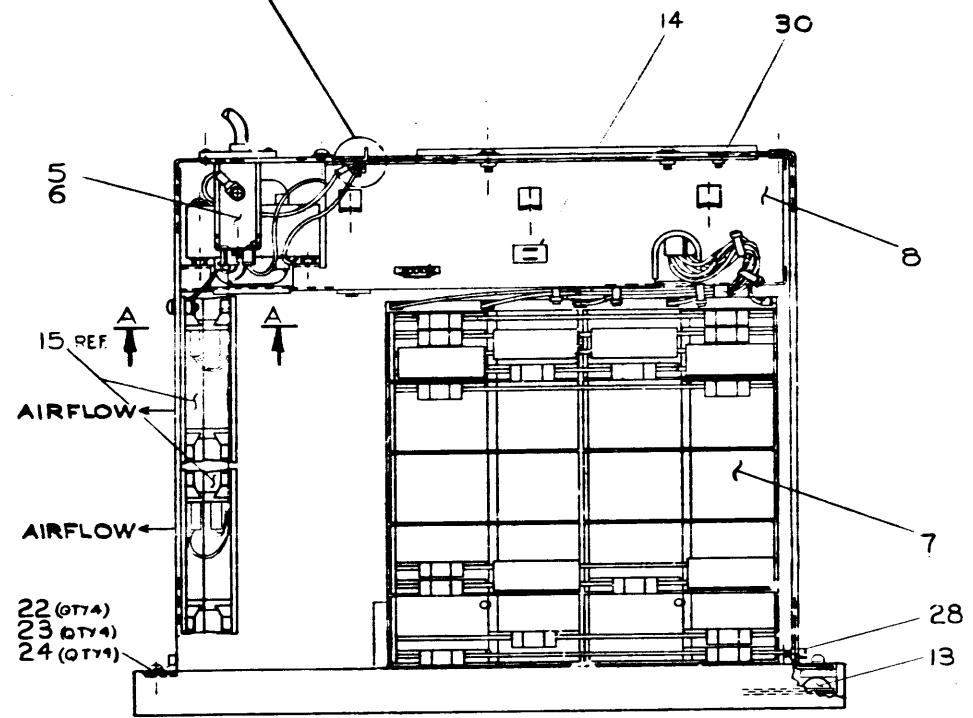
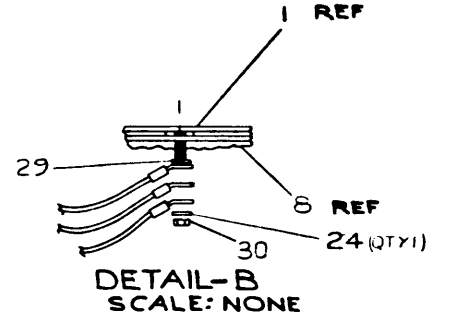
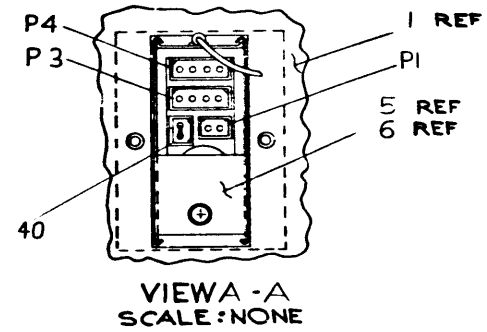
DATE: 6-17-75

FIRST USED ON OPTION/MODEL	QTY	DESCRIPTION	PART NO	ITEM NO
BM 812-I				
UNLESS OTHERWISE SPECIFIED DIMENSION IN INCHES				
TOLERANCES				
DECIMALS	ANGLES	TITLE		
XXX - 008	10° 30'	UNIT ASSY.		
XX - 02		BM812-I		
X - 1.1				
REMOVE BURRS AND BREAK SHARP CORNERS SURFACE QUALITY				
MATERIAL				
SEE PARTS LIST	B-DD-BM812I	SIZE CODE	NUMBER	REV
FINISH	SCALE	DUA	BM812-I-0	A
	SHEET 1 OF 3	DIST		

PART NO. BM812-I-0

Any drawing and specifications, herein, are the property of Digital Equipment Corporation and shall not be reproduced or used in whole or in part, or in any manner, for the manufacture or sale of any item without permission. (27) (12/1976)
 DIGITAL EQUIPMENT CORPORATION

SEE DETAIL-B

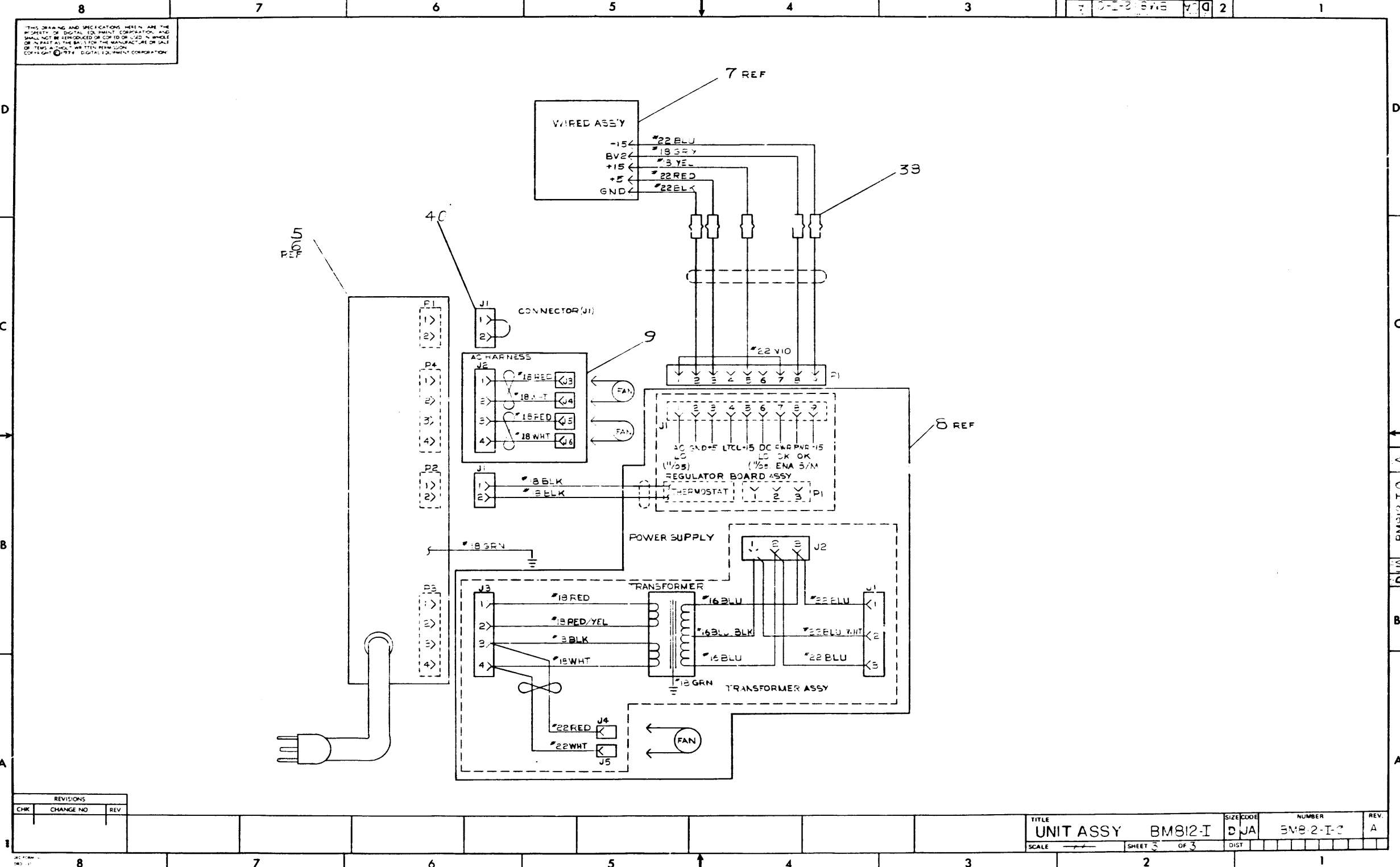


REVISIONS		
CHK	CHANGE NO	REV

TITLE	UNIT ASSY	BM812-I	D U A	NUMBER	BM812-I-0	REV	A
SCALE	SHEET 2 OF 3		LIST				

UNIT ASSY BM812-I-0
 REV A
 11/1976

THIS DRAWING AND SPECIFICATIONS HEREIN ARE THE PROPERTY OF DIGITAL EQUIPMENT CORPORATION AND SHALL NOT BE REPRODUCED OR COPIED OR USED IN WHOLE OR IN PART AS THE BASIS FOR THE MANUFACTURE OR SALE OF ITEMS WITHOUT WRITTEN PERMISSION. COPYRIGHT © 1977, DIGITAL EQUIPMENT CORPORATION.



REVISIONS		
CHK	CHANGE NO	REV

TITLE	UNIT ASSY	BM812-I	SIZE CODE	DJA	NUMBER	5082-I-C	REV.	A
SCALE	---		SHEET	3	OF	3	DIST	

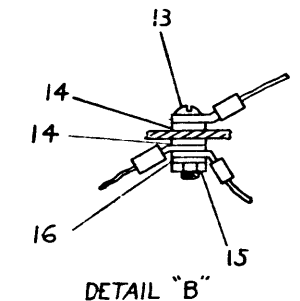
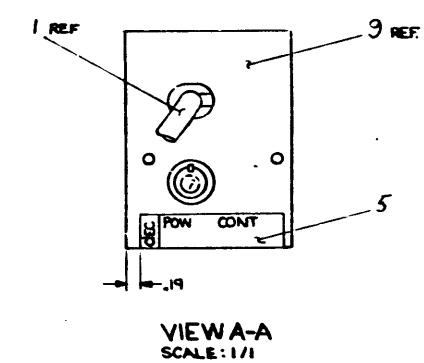
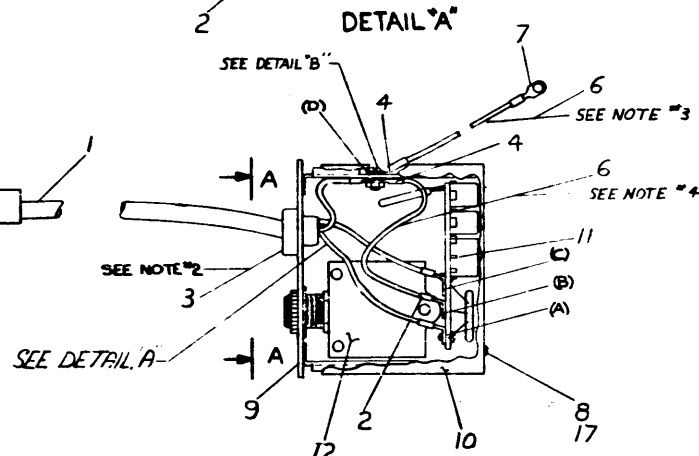
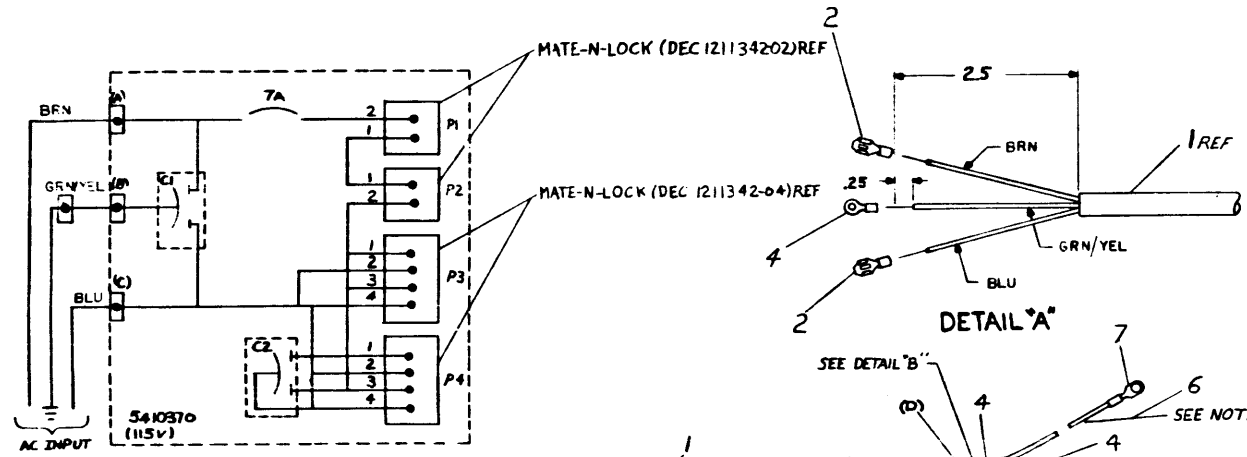
DUA BMS12 I O A

This drawing and specifications remain the property of Digital Equipment Corporation and shall not be reproduced or copied in whole or in part without the written permission of Digital Equipment Corporation. © 1973

DIGITAL EQUIPMENT CORPORATION

LEGEND		
PART NO.	ITEM #	QUANTITY
BC20A-06	170005-06	6 FT
BC20A-07	170005-07	9 FT

- NOTES:
- CONNECT ITEM #1 (POWER CORD) PER CIRCUIT SCHEMATIC.
 - FOR INSTALLATION USE HEYCO #29 STRAIN RELIEF PLIERS.
 - LENGTH OF THIS WIRE (ITEM #6) IS 9.75" ±.5
 - LENGTH OF THIS WIRE (ITEM #6) IS 3.0" ±.5



QTY.	DESCRIPTION	PART NO.	ITEM NO.
1	WASHER, 6 INTERNAL TOOTH	9006633	17
1	WASHER, FLAT, 3/16x25x0.27	9006655	16
1	KEPNUT #4-40	9006557	15
2	WASHER, 4 INTERNAL TOOTH	9006632	14
1	SCR. PHL PAN HD #4-40x.38	9006011-1	13
1	CIRCUIT BREAKER (7A)P	1210330-7	12
1	POWER CONTROL BQ(115V)	5410370-0-0	11
1	COVER, AC INPUT	C-MD-530373-0-0	10
1	BOX, AC INPUT	DJAS309845-0-0	9
1	SCR. PHL HD PAN #6-32x.25	9006020-1	8
1	SOLDERLESS, CONN #5360	9007930	7
AIR	#18 AWG. STRD GRN	9107360-55	6
1	PWR CONTROL DEC-L(115V)	A-DC-510438-0-0	5
3	SOLDERLESS, CONN	9007929-0	4
1	STRAIN RELIEF SA-6N3-4	9008492-2	3
3	SOLDERLESS CONN	9007917	2
1	POWER CORD 120 V	SEE LEGEND	1

FIRST USED ON OPTION/MODEL		QTY.	DESCRIPTION	PART NO.	ITEM NO.
PDP8M					
UNLESS OTHERWISE SPECIFIED DIMENSIONS IN INCHES TOLERANCES					
DECIMALS	ANGLES				
.XX - .000	±0°30'				
.XX - .01					
REMOVE BURRS AND BREAK SHARP EDGES SURFACE QUALITY		PROD.	DATE		
MATERIAL		NEXT HIGHER ASSY.		SIZE CODE	NUMBER
FINISH		SCALE	SHEET	D	BC20A-2-2
		OF	DIST		REV
					D

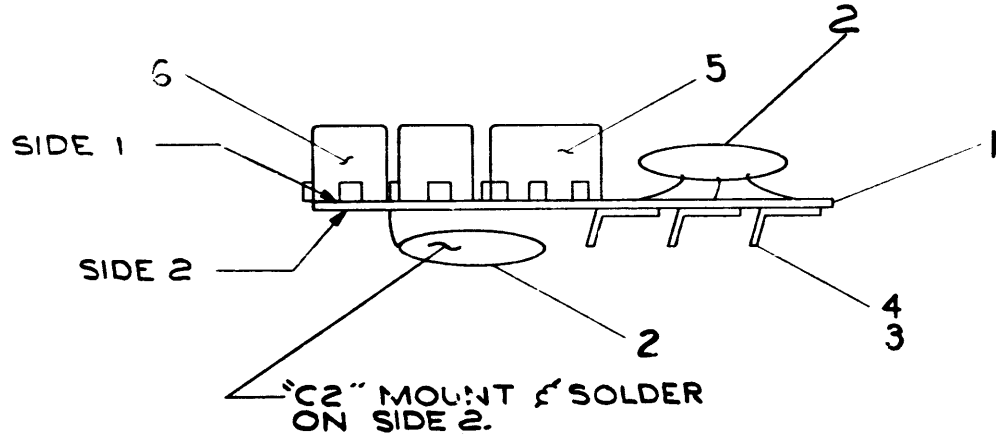
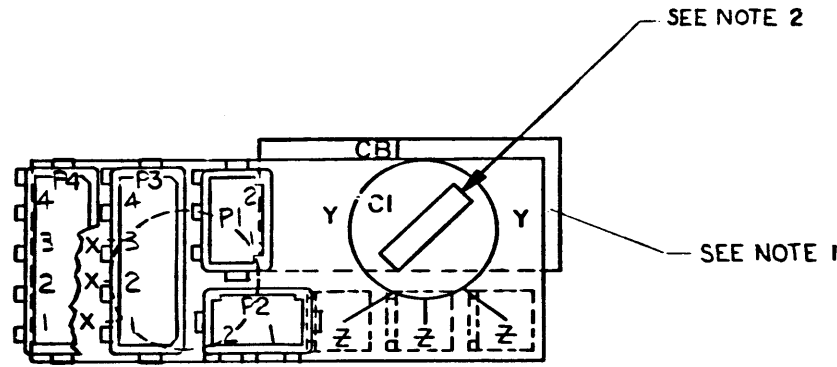
CHK	CHANGE NO	REV
	FC 00-00001	
ORIGINAL		
	FC 00-00002	B
	FC 00-00003	C
DRAWING NO. WAS		
D-UA-1110-0-0		
P. GARDNER		
BC20-00003		
DRAWING NO. WAS		
D-UA-1110-0-0		
P. GARDNER		
BC20-ML004		
C. NORRIS		

digital EQUIPMENT CORPORATION
LINE SET, 115 V

THIS DRAWING AND SPECIFICATIONS HEREIN ARE THE PROPERTY OF DIGITAL EQUIPMENT CORPORATION, AND SHALL NOT BE REPRODUCED OR COPIED OR USED IN WHOLE OR IN PART AS THE BASIS FOR THE MANUFACTURE OR SALE OF ITEMS WITHOUT WRITTEN PERMISSION. COPYRIGHT © 1973 DIGITAL EQUIPMENT CORPORATION.

NOTES:

1. CBI (CIRCUIT BREAKER) TO BE INSTALLED ON NEXT HIGHEST ASSEMBLY.
2. ETCHED BOARD (ITEM #1) MUST BE U.L. APPROVED LOCATION FOR MANUFACTURERS U.L. NUMBER SHALL BE ON SIDE 1 IN POSITION SHOWN. SIZE 1/8" X 1/2" FULL SCALE MAX.



QTY	REF DESIGNATION	DESCRIPTION	PART NO.	ITEM NO.
2	P3, P4	4 CIRCUIT PC. B'D MATE-N-LOCK	1211342-04	6
2	P1, P2	2 CIRCUIT PC. B'D MATE-N-LOCK	1211342-02	5
3		EYELET #GS4-5	9009000	4
3		FASTON TABS	9008219	3
2	C1, C2	CAP. DUAL-SECTION DISC .02uf	1010767	2
1		ETCHED CIRCUIT BOARD	5010369	1
		MODULE ECO HISTORY	B-MH-5410370-0-6	REF
		ASSY/DRILLING HOLE LAYOUT	D-AH-5410370-0-5	REF
		X-Y COORDINATE HOLE LOCATION	K-CO-5410370-0-4	REF

FIRST USED ON OPTION MODEL		PARTS LIST		
H402				
UNLESS OTHERWISE SPECIFIED DIMENSION IN INCHES	DRY <i>D Sullivan</i> DATE 2/13/73	<p>digital EQUIPMENT CORPORATION MAYNARD, MASSACHUSETTS</p>		
TOLERANCES	CHK'D. <i>[Signature]</i> DATE 3-6-73			
DECIMALS .xxx = .005	ENG. <i>[Signature]</i> DATE 4-8-73			
ANGLES .0 30	PROJ. ENG. <i>[Signature]</i> DATE 4-8-73			
REMOVE BURRS AND BREAK SHARP CORNERS SURFACE QUALITY 1	PROD. <i>[Signature]</i> DATE 4-8-73	TITLE POWER CONTROL BOARD (115V)		
MATERIAL	NEXT HIGHER ASSY.	SIZE CODE	NUMBER	REV.
	D-UA-H402-0-0	C IA	5410370-0-0	A
FINISH	SCALE	SHEET	OF	DIST.
		1	1	

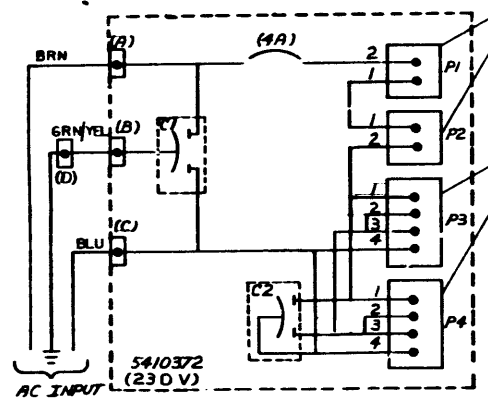
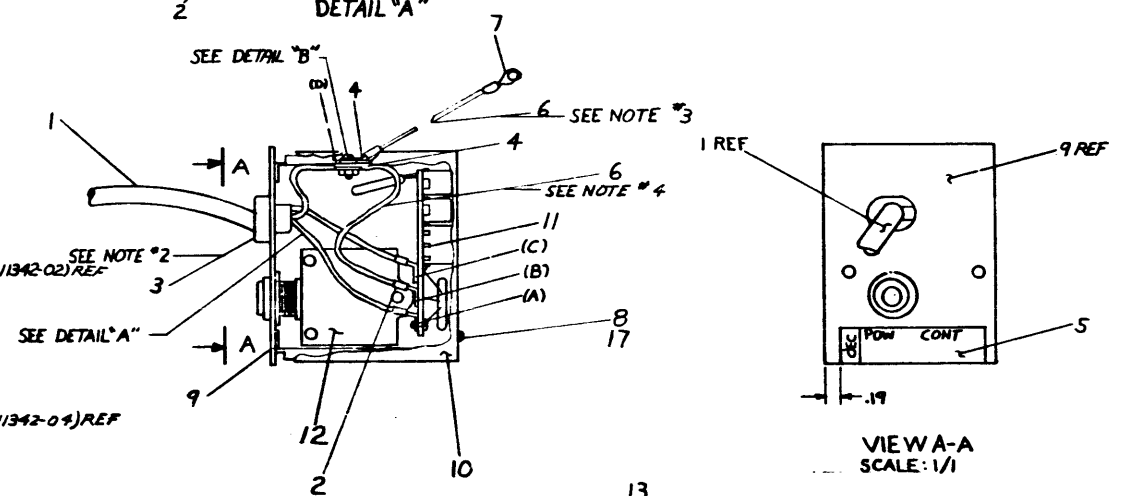
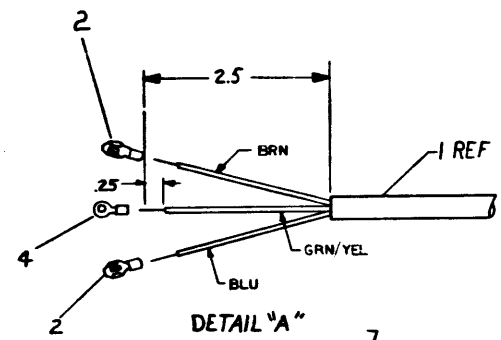
REV	CHANGE NO	REVISIONS

REV 1
 C
 A
 B
 A
 5410370-0-0-1
 C IA 5410370-0-0-1

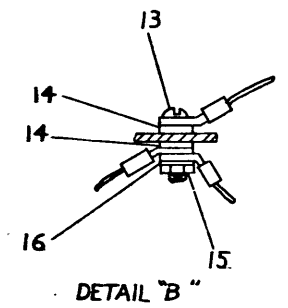
ALL DIMENSIONS AND SPECIFICATIONS GIVEN, ARE THE PROPERTY OF DIGITAL EQUIPMENT CORPORATION, AND SHALL BE REPRODUCED OR USED IN WHOLE OR IN PART BY THE BUYER FOR THE MANUFACTURE OF MADE TO ORDER EQUIPMENT, WITHOUT THE WRITTEN PERMISSION OF DIGITAL EQUIPMENT CORPORATION.

LEGEND		
PART NO.	ITEM #1	VARIATION
BC20B-06	1700015-06	6 FT
BC20B-07	1700016-03	9 FT

- NOTES:**
- CONNECT ITEM #1 (POWER CORD) PER CIRCUIT SCHEMATIC.
 - FOR INSTALLATION USE HEYCO #29 STRAIN RELIEF PLIERS.
 - LENGTH OF THIS WIRE (ITEM #5) IS 9.75" ± .5
 - LENGTH OF THIS WIRE (ITEM #6) IS 3.0" ± .5



QTY.	DESCRIPTION	PART NO.	ITEM NO.
1	WASHER, 5/16 INTERNAL TOOTH	9006633	17
1	WASHER, FLAT, 3/12x1/25x.027	9006655	16
1	KEP NUT #4-10	9006557	15
2	WASHER, #4 INTERNAL TOOTH	9006632	14
1	SCR. PHL PAN HD #4-10 x.38	9006011-1	13
1	CIRCUIT BREAKER (4 AMP)	1210830-4	12
1	POWER CONTROL BD (230V)	1-29-5810372-00	11
1	COVER, AC INPUT	CMD-580373-0-0	10
1	BOX, AC INPUT	D-2A-5309845-0-0	9
1	SCR. PHL PAN HD #6-32x.25	9006020-1	8
1	SOLDERLESS CONN #50360	9007930	7
NR	#18 AWG STRD, GRN	9107360-55	6
1	PNR CONTROL DECAL (230V)	A-DC-580437-0-0	5
3	SOLDERLESS CONN	9007929-0	4
1	STRAIN RELIEF SR-6N3-4	9008492-2	3
3	SOLDERLESS CONN	9007917	2
1	POWER CORD 240V	SEE LEGEND	1



REV.	DATE	BY	CHKD.	DATE
1	2-1-74	J. GARRNER	J. GARRNER	2-1-74
2	2-1-75	C. NORRIS	C. NORRIS	2-1-75

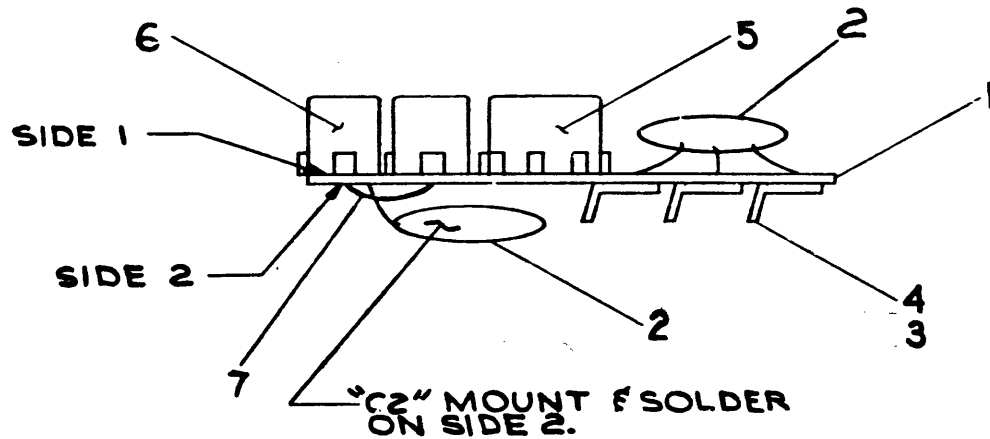
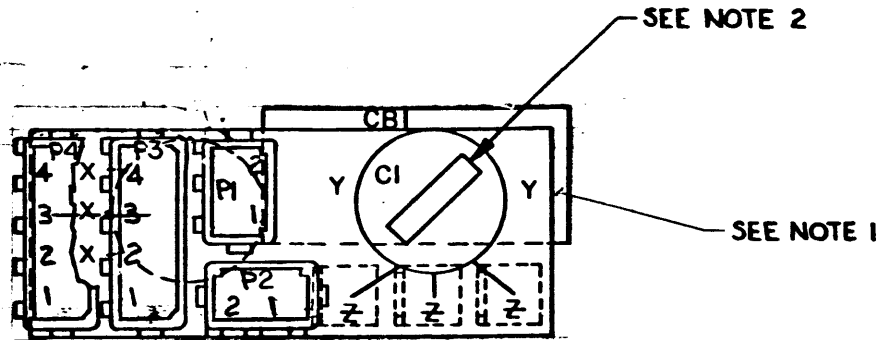
FIRST USED ON OPTION MODEL		QTY.	DESCRIPTION	PART NO.	ITEM NO.
PDP8M					
UNLESS OTHERWISE SPECIFIED DIMENSION IN INCHES		DATE 2-1-74			
TOLERANCES		DATE 4-27-74			
DECIMALS	ANGLES	DATE 7-16-75			
.100 ± .008	0° 30'	DATE 2-1-75			
.010 ± .001		DATE 4-27-75			
REMOVE BURRS AND BREAK SHARP CORNERS SURFACE QUALITY 1		DATE 4-27-75			
MATERIAL	NEXT HIGHER ASSY.		TITLE		
FINISH	SCALE	SIZE CODE	NUMBER	REV.	
	SHEET OF 1	DCA	4000B-07	E	

LINE SET, 230V

"THIS DRAWING AND SPECIFICATIONS HEREIN ARE THE PROPERTY OF DIGITAL EQUIPMENT CORPORATION AND SHALL NOT BE REPRODUCED OR COPIED OR USED IN WHOLE OR IN PART AS THE BASIS FOR THE MANUFACTURE OR SALE OF ITEMS WITHOUT WRITTEN PERMISSION. COPYRIGHT © 1973, DIGITAL EQUIPMENT CORPORATION"

NOTES:

- 1 CBI CIRCUIT BREAKER TO BE INSTALLED ON NEXT HIGHEST ASSEMBLY.
- 2 ETCHED BOARD (ITEM 7) MUST BE U.L. APPROVED LOCATION FOR MANUFACTURERS U.L. NUMBER SHALL BE ON SIDE 1 IN POSITION SHOWN. SIZE 1/8" X 1/2" FULL SCALE MAX.
3. FOR CIRCUIT SCHEMATIC SEE D-UA-BC2ΦB-Φ-Φ.



A/R	REF DESIGNATION	DESCRIPTION	PART NO.	ITEM NO.
		WIRE, #18AWG, STRD, RED	9107360-22	7
2	P3,P4	4CIRCUIT P.C. B'D MATE-N-LOCK	1211342-04	6
2	P1,P2	2CIRCUIT P.C. B'D MATE-N-LOCK	1211342-02	5
3		EYELET #GS4-5	9009000	4
3		FASTON TABS	9008219	3
2	C1,C2	CAP DUAL-SECTION DISC .00474F	1014912	2
1		ETCHED CIRCUIT BOARD	5010371	1
		MODULE ECO HISTORY	B-MH-5410372-06	REF
		ASSY/DRILLING HOLE LAYOUT	D-AH-5410372-05	REF
		X-Y COORDINATE HOLE LOC.	K-CG-5410372-04	REF

FIRST USED ON OPTION/MODEL		PARTS LIST	
H402			
UNLESS OTHERWISE SPECIFIED DIMENSION IN INCHES		DRN: <i>D Sullivan</i>	DATE: 2-13-73
TOLERANCES		CHKD: <i>[Signature]</i>	DATE: 3-6-73
DECIMALS	ANGLES	ENG: <i>[Signature]</i>	DATE: 4-10-73
.XXX = .005	±0° 30'	PROJ. ENG: <i>[Signature]</i>	DATE: 4-18-73
.XX = .02		PBOD: <i>[Signature]</i>	DATE: 4-18-73
.X = .1			
REMOVE BURRS AND BREAK SHARP CORNERS SURFACE QUALITY V		TITLE: POWER CONTROL BOARD (230V)	
MATERIAL		NEXT HIGHER ASSY.	
		D-UA-H402-0-0	
FINISH		SCALE	SIZE CODE
		SHEET OF	C IA
		DIST.	NUMBER
			5410372-0-0
			REV. C

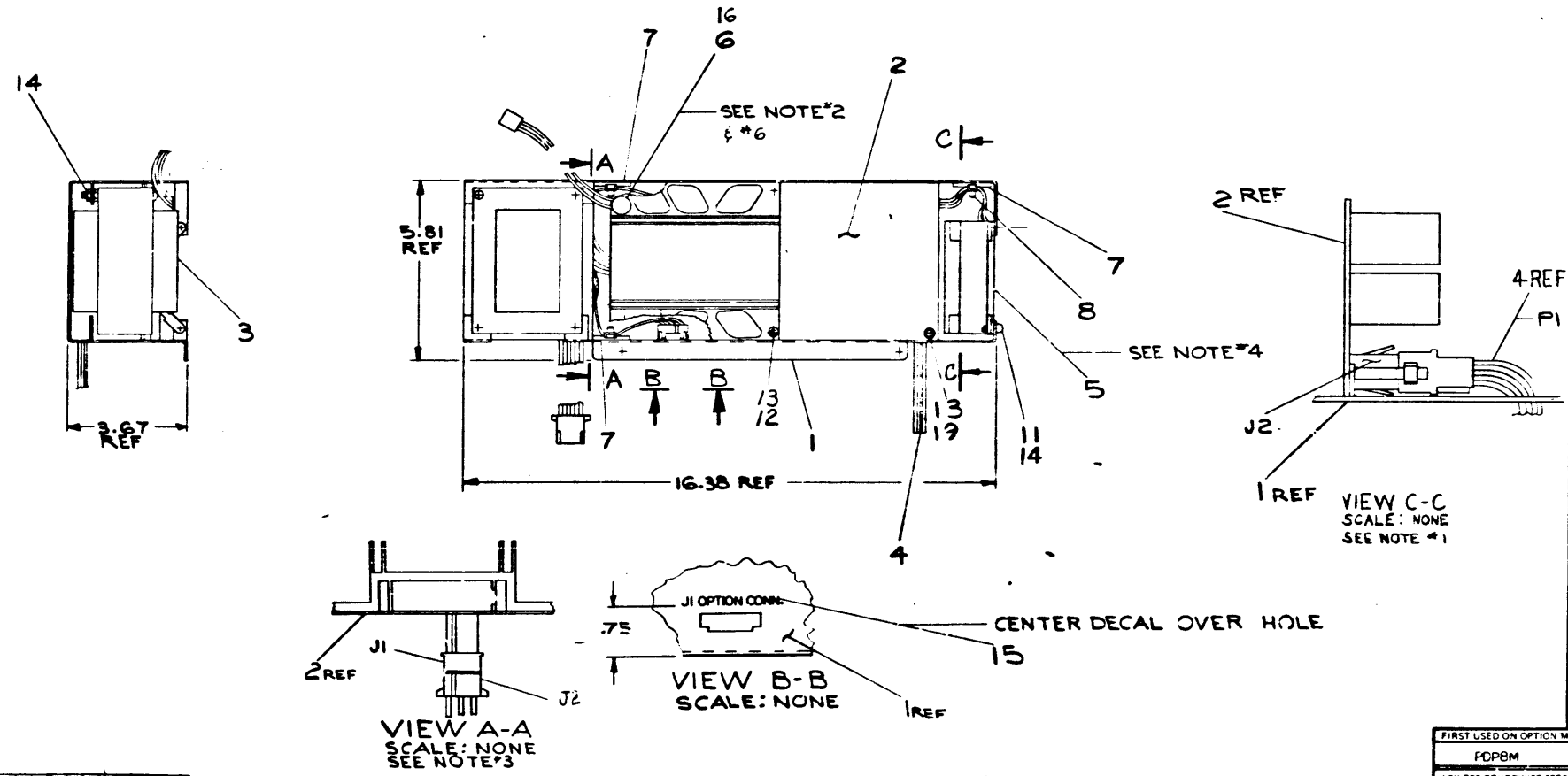
REV.	CHANGE NO.	CHK
B	5410372-00001	<i>[Signature]</i>
C		<i>[Signature]</i>
		<i>[Signature]</i>
		<i>[Signature]</i>
		<i>[Signature]</i>
		<i>[Signature]</i>
		<i>[Signature]</i>
		<i>[Signature]</i>

1. This drawing and its contents shall remain the property of Digital Equipment Corporation and shall not be reproduced or used in whole or in part in any form for the manufacture of any of its products without the express permission of Digital Equipment Corporation.

DIGITAL EQUIPMENT CORPORATION

LEGEND	
7009282-0	DC HARNESS
7009282-1	NO DC HARNESS

- NOTES:
- CONNECT J2 OF ITEM#2 (REGULATOR BOARD ASSY) TO P1 OF ITEM#4 (D.C. HARNESS).
 - REPLACE THERMOSTAT ON ITEM#2, ITEM#76 ON D.V.G. NO E-1A-5409728-0-0 WITH ITEM#6 (THERMOSTAT). LEAVE LEADS AT FULL LENGTH AND ADD ITEM#10 (PIN) AND ITEM#11 (CONN.) TO END OF LEADS RETURN OLD THERMOSTAT WITH 5 INCH LEADS TO STOCKROOM.
 - CONNECT J1 OF ITEM#2 (REGULATOR BOARD ASSY) TO J2 OF ITEM#3 (TRANSFORMER ASSY).
 - CONNECT J4 AND J5 OF ITEM#3 (TRANSFORMER ASSY.) TO ITEM#5 (FAN).
 - FOR POWER SUPPLY ASSEMBLY PROCEDURE SEE DWG A-SP-PDP8M-0-8
 - REMOVE THERMOSTAT (ITEM#6) FROM THE BOARD AND LEAVE WITH THE MACHINE WHEN RETURNING THE REGULATOR BD ASSY. (ITEM#2) FOR REPAIR.



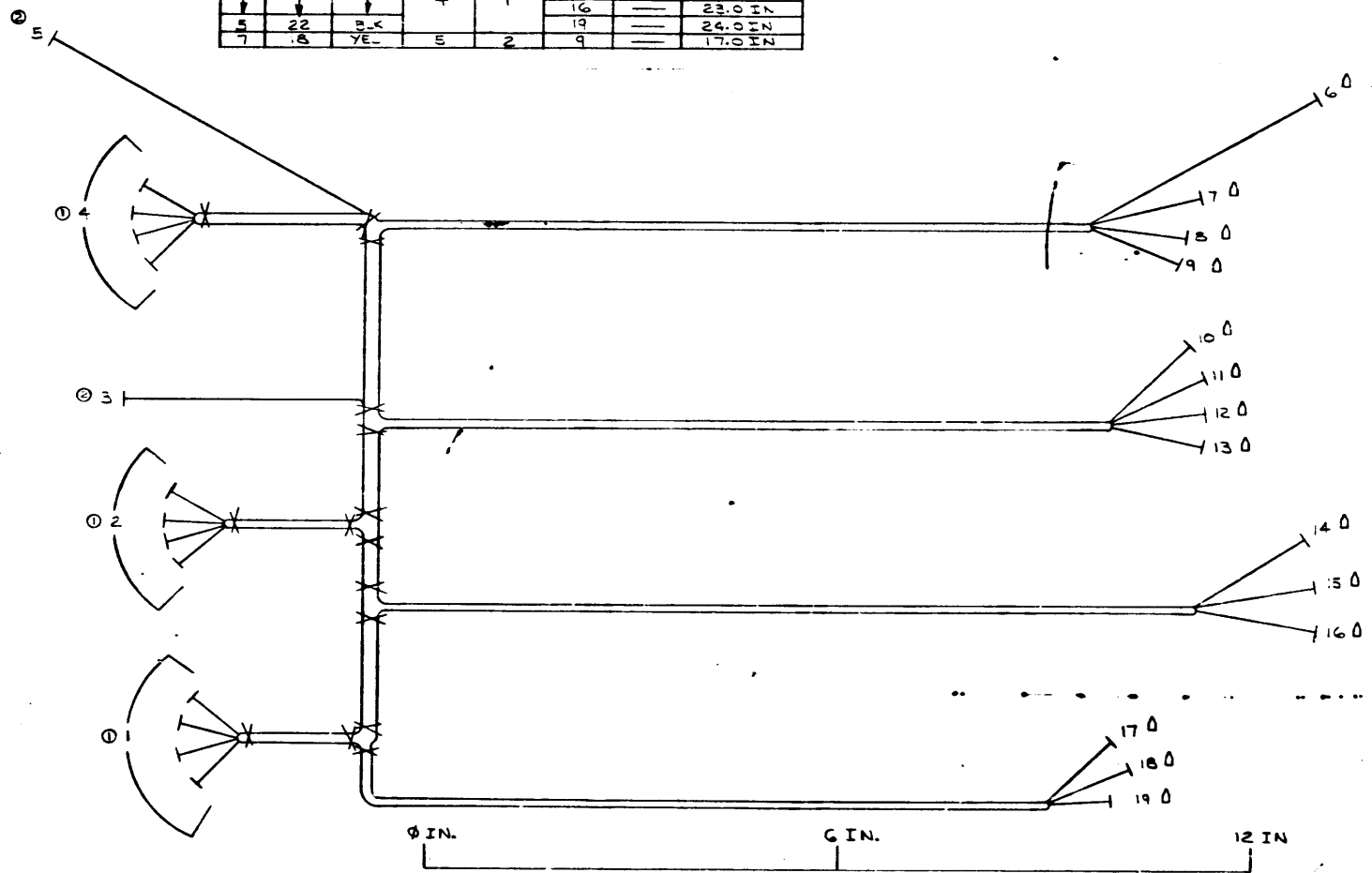
QTY	DESCRIPTION	PART NO	ITEM NO	
2	SCR, PHL, HD PAN, HD #6-32x25	9006620-1	19	
N/A	N/A	PACKAGING INSTRUCTIONS A-SP-37000-0-1	18	
REF	REF	PS ASSY PROCEDURE A-SP-PDP8M-0-8	17	
A/R	A/R	COMPOUND THERMAL JOINT	9008268	16
1	1	DECAL (PDP8/M)	A-DC1410730-00	15
3	3	NUT, KEPS # 8-32	9006553	14
6	6	WASHER, INT TOOTHLOCK	9006633	13
4	4	SCR, PHL, HD PAN #5-32x.16	9006023-1	12
4	4	SCR, PHL, HD PAN #8-32x.44	9006038-1	11
		PIN, MATE IN LOCK - MALE	1209378-01	10
		CONN, MATE IN LOCK	1210822-02	9
3	3	CABLE, TIE	9007031	8
3	3	CABLE, TIE MOUNT	9008264	7
1	1	THERMOSTAT ASSY	E-1A-7009452-00	6
1	1	FAN,	1210719	5
0	1	HARNESS, D.C.	D-1A-7009120-00	4
1	1	TRANSFORMER ASSY.	E-1A-7009271-00	3
1	1	REGULATOR BD ASSY	E-1A-5409728-00	2
1	1	CHASSIS, POWER SUPPLY	E-1A-7410746-00	1

REVISIONS	DATE	BY	CHK	CHANGE NO	REV
1	11/15/73	P. GARDNER		00018	A
2	12/12/73	P. GARDNER		00019	B
3	12/12/73	P. GARDNER		00020	C
4	12/12/73	P. GARDNER		00021	D
5	12/12/73	P. GARDNER		00022	E
6	12/12/73	P. GARDNER		00023	F
7	12/12/73	P. GARDNER		00024	G
8	12/12/73	P. GARDNER		00025	H

FIRST USED ON OPTION MODEL		QTY	DESCRIPTION	PART NO	ITEM NO
PDP8M PARTS LIST					
UNLESS OTHERWISE SPECIFIED DIMENSIONS IN INCHES TOLERANCES	DRN	DATE	DIGITAL EQUIPMENT CORPORATION		
DECIMALS	CHKD	DATE	TITLE		
ANGLES	ENG	DATE	POWER SUPPLY ASSY		
XRA - .005	PROJ ENG	DATE	MATERIAL		
XX - .02	PROD	DATE	NEXT HIGHER ASSY		
X - .1	REMOVE BURRS AND BREAK SHARP CORNERS SURFACE QUALITY		FINISH		
MATERIAL		D-1A-PDP8M-0-8		SIZE CODE	NUMBER
FINISH		SCALE NONE		DAD	7009282-0-0
		SHEET 1 OF 1		DIST	

THIS DRAWING AND SPECIFICATIONS HEREIN ARE THE PROPERTY OF DIGITAL EQUIPMENT CORPORATION AND SHALL NOT BE REPRODUCED OR COPIED OR USED IN WHOLE OR IN PART AS THE BASIS FOR THE MANUFACTURE OR SALE OF ITEMS WITHOUT WRITTEN PERMISSION OF DIGITAL EQUIPMENT CORPORATION.

WIRE TABLE						
ITEM NO.	DESCRIPTION	FROM POINT	TO POINT	TERMINAL	WIRE LENGTH	
3	22	RED	1	1	23.0 MIN	
3	↑	↑	1	1	13	
3	↑	↑	1	1	14	
4	22	RED	1	1	17.0 MIN	
4	↑	↑	1	1	17	
4	↑	↑	1	1	16.0 MIN	
6	22	BLU	2	1	23.0 MIN	
6	↑	↑	2	1	12	
6	↑	↑	2	1	18	
5	22	GRY	3	2	8.0 MIN	
5	↑	↑	3	2	10	
5	↑	↑	3	2	7	
5	↑	↑	3	2	16.0 MIN	
7	22	BLK	4	1	19.0 MIN	
7	↑	↑	4	1	11	
7	↑	↑	4	1	16	
7	↑	↑	4	1	23.0 MIN	
7	↑	↑	4	1	19	
7	↑	↑	4	1	24.0 MIN	
7	↑	↑	4	1	17.0 MIN	



DO NOT REDUCE
(FOR MFG PURPOSES ONLY)

ITEM NO.	DESCRIPTION	QTY	PART NO.	ITEM NO.
X 15	TIE, CABLE		9067031-00	8
17	WIRE #18 AWG STRD (YEL)		9107360-44	7
15	WIRE #18 AWG STRD (GRY)		9107360-88	6
82	WIRE #22 AWG STRD (BLK)		9107350-00	5
76	WIRE #22 AWG STRD (BLU)		9107350-66	4
76	WIRE #22 AWG STRD (RED)		9107350-22	3
2	TERMINAL, QUICK CONNECT		9007917-00	2
3	TERMINAL, QUICK CONNECT		9007919-00	1

THIRD ANGLE PROJECTION		UNLESS OTHERWISE SPECIFIED DIMENSIONS ARE IN INCHES	
<input checked="" type="checkbox"/> THIRD ANGLE PROJECTION <input type="checkbox"/> FIRST ANGLE PROJECTION	ANGLES OF SW	CLASS NEW	CLASSIFICATION
	SURFACE QUALITY	CHECK ONE	FINISH
QUANTITY & VARIATION	MICROINCHES	PREFERRED	FINISH
DRN	CHK'D	ENG.	PROJ. ENG.
PROD.	NEXT HIGHER ASSY		
MATERIAL	SEE PARTS LIST	SCALE	DIST.
FINISH		OF 1	

TITLE		FIRST USED ON	
HARNESS (BM812-I)		41-12-1	
NUMBER		REV	
14701185-0-0			

DATE: 11/12/70
BY: [Signature]
CHECKED: [Signature]
CHANGE NO.: [Blank]

DIGITAL 701185-0-0