

**RT-11**

May 1978

**AD-C740B-B1**

**THE  
SOFTWARE  
DISPATCH**

**digital**  
**SOFTWARE SERVICES**  
OPERATIONS GROUP

COPYRIGHT © 1978 DIGITAL EQUIPMENT CORPORATION

**RT-11 SOFTWARE DISPATCH**  
Published by  
**Administrative Services Group, Software Services**  
**Digital Equipment Corporation**  
P.O.Box F  
Maynard MA 01754

The **RT-11 Software Dispatch** complements the **RT-11 V3 Software Dispatch Review**. It publishes new and revised Software Product Descriptions, programming notes, software problems and solutions and documentation corrections. Much of the material is developed from answers to customer Software Performance Reports (SPRs) significant to the general audience.

The material is formatted to establish a reference notebook for the customer's software interests. The following products are supported in the **RT-11 Software Dispatch**:

<b>APL-11 V1</b>	<b>FORTTRAN/RT-11 Extensions V1B</b>	<b>MU BASIC/RT-11 V1</b>
<b>BASIC/RT-11 V1B, V2</b>	<b>FORTTRAN/RT-11 LSI Extensions V1</b>	<b>PDL/RT-11 V1</b>
<b>BASIC/RT-11 Extensions</b>	<b>FORTTRAN IV/RT-11 V1C, V2</b>	<b>PEAK-11 V2</b>
<b>CTS-300 V3, V4</b>	<b>GAMMA-11 F/B V2</b>	<b>PLOT-11/RT-11 V1</b>
<b>CTS-300 DICAM V1</b>	<b>INDUSTRIAL BASIC/RT-11 V1</b>	<b>REMOTE/RT-11 V1</b>
<b>CTS-300/DIS V1</b>	<b>LA-11 V3</b>	<b>RT-11 V2C, V3</b>
<b>DECnet/RT V1</b>	<b>LV11/RT-11 Plotting Package V2</b>	<b>RT-11/2780 V2</b>
<b>FOCAL/RT-11 V1B</b>		<b>SSP-11/RT-11 V1</b>

The material in this document is for information purposes only and is subject to change without notice. Digital Equipment Corporation assumes no responsibility for any errors which may appear in this document. Comments on the contents of this publication should be directed to your local DIGITAL Field Office.

Software binaries and sources are provided only under licenses. The standard terms and conditions, OEM Agreement, and/or Quantity Discount Agreement contain the licenses for all binaries other than for DECsystem-10.

**DISTRIBUTION:** The Dispatch is directed to one software contact (the system manager) at each licensed Category A and B software installation. No mailing will be made to addresses without a software contact.

Address changes and requests for information about maintenance service after the first year should be sent to the nearest DIGITAL Field Office. For address changes, include the new address and mailing label from the most recently received publication.

**Eleanor F. Hunter, Editor**  
**Roxanne Alexander, Associate Editor**

**TRADEMARKS of DIGITAL EQUIPMENT CORPORATION**  
Maynard, Massachusetts

<b>DIGITAL</b>	<b>DECsystem-10</b>	<b>MASSBUS</b>
<b>DEC</b>	<b>DECtape</b>	<b>OMNIBUS</b>
<b>PDP</b>	<b>DIBOL</b>	<b>OS/8</b>
<b>DECUS</b>	<b>EDUSYSTEM</b>	<b>PHA</b>
<b>UNIBUS</b>	<b>FLIP CHIP</b>	<b>RSTS</b>
<b>COMPUTER LABS</b>	<b>FOCAL</b>	<b>RSX</b>
<b>COMTEX</b>	<b>INDAC</b>	<b>TYPESET-8</b>
<b>DDT</b>	<b>LAB-8</b>	<b>TYPESET-11</b>
	<b>DECCOMM</b>	

TABLE OF CONTENTS

	SEQ.NO.	PAGE
ANNOUNCING RT-11 VERSION 3B		1
USER LETTER		3
APL-11 V1		
PROGRAM PATCHES		
SYSTEM ERROR ON PARAMETER RETURN	7 M	5
CTS-300 V3		
LPTSPL VB03-00		
NO CONTINUE AFTER PROGRAM ABORT (PATCH 47)	1 M	7
DECFORM V03-00L		
EXITING DECFORM VIA FIVE-PART QUESTION (PATCH 48)	15 M	9
ISMUTL		
LEGAL CHARACTERS IN ISAM RECORDS	11 R	13
CTS-300/DIS V3.5		
DECFORM V03-00N		
EXITING DECFORM VIA FIVE-PART QUESTION (PATCH 49)	14 M	17
ISMUTL		
LEGAL CHARACTERS IN ISAM RECORDS	10 R	21
LPTSPL VB03-00		
NO CONTINUE AFTER PROGRAM ABORT (PATCH 48)	1 M	23
BASE LEVEL 2		27
CTS-300 V4		
ISMUTL		
LEGAL CHARACTERS IN ISAM RECORDS	5 R	29
R6 STACK OVERFLOW (PATCH 62)	29 M	31
FORTRAN IV/RT-11 EXTENSIONS V1		
TWO PROBLEMS WITH THE RT-11/FORTRAN GRAPHICS EXTENSIONS	87 M	35
FORTRAN IV/RT-11 V2		
COMPILER		
SIMRT DO NOT WORK	5 M	37
SIMRT CONTINUED	6 M	43
SYNTAX ERRORS IN SOURCE PROGRAM MAY CAUSE COMPILER TO ABORT (PATCH 09)	11 M	44
MU BASIC/RT-11 V1		
ADDITIONAL FILES ON RELEASE KIT (MUB*.*)	7 N	45

TABLE OF CONTENTS (CONT.)

	SEQ.NO.	PAGE
RT-11 V3		
MONITOR IMPROPER HANDLING OF THE KW11-P CLOCK	4 M	47
RT-11/278Ø V2		
PATCHING THE 278Ø IN RT-11 V3	3 M	49
SOFTWARE PRODUCT DESCRIPTION (SPDs)		53
CUMULATIVE INDEX		61
DECUS SPECIAL INTEREST GROUPS		71

## ANNOUNCING RT-11 Version 3B

To continue its timely support of new hardware, RT-11 V3B will be available from the SDC (Software Distribution Center) in the beginning of May 1978. The contents of V3B are discussed below. All RT-11 V3 orders will automatically become V3B orders as soon as V3B is released. At V3B release, V3 will no longer be available. RT-11 V2C will remain available from the SDC, unsupported.

You may receive RT-11 in one of the following three ways:

- |  |   |
|--|---|
| 1. One year software warranty in effect when V3B is released                           | Order RT-11 V3B In-warranty Update Kit  |
| 2. One year Post-warranty Binary Program Update Service in effect when V3B is released | Sit tight. Your update has been prepaid as part of your service. RT-11 V3B will be sent to you automatically. |
| 3. No service in effect  | Order RT-11 V3B Post-warranty Update Kit  |

Your Dispatch mailing label displays your membership number and the expiration date of your service so you can determine your situation. For specific price and order information, contact your local DIGITAL Field Office.

With Version 3B, 7-track magnetic tape distribution has been discontinued. RT-11 will not distribute on RK07, but RK07 will be supported both as a system device and a data device. Sources will be available on floppy disks for V3B as well as RK05, RL01, and 9-track magnetic tape.

The primary goals of RT-11 V3B are to support new hardware devices and to introduce two new system utility programs. Some existing system components have been improved as well, and most known problems in V3 have been corrected.

### NEW DEVICE SUPPORT

RT-11 supports two new mass storage devices and several hardware devices:

#### RL01 Disk

RT-11 supports the RL11/RLV11/RL01 disk as a storage medium and as a system device. The RL01 is a high-speed removable cartridge disk that offers approximately twice the storage capacity of the RK11/RK05 disk. RT-11 supports a replacement table for manufactured bad blocks on the RL01. RT-11 is distributed on the RL01. RT-11 does not support error logging for the RL01. This device supports a complete optional system generation (SYSGEN) with no special requirements.

#### RK07 Disk

RT-11 supports the RK711/RK07 cartridge disk as a storage medium and as a system device. The RK07, a removable cartridge disk with more than 24 megabytes of storage, uses the same RK611 controller and the same device handler as the RK06 disk. Programmed request allows programs to distinguish between the two devices on the one controller. Support of replacement of manufactured bad blocks for the RK07 is the same as for the RK06. RT-11 supports optional error logging for the RK07. Optional SYSGEN is supported on this device.

COMPANY CONFIDENTIAL

## **Announcing RT-11 V3B (cont.)**

### **VT55 Terminal**

RT-11 supports the VT55 graphics display terminal. Software for the VT55 included with RT-11 consists of the following two files:

PLOT55, a single FORTRAN-callable routine that provides access to the graphics features of the VT55 terminal.

TEST55.FOR, a FORTRAN program that provides a simple but thorough demonstration of the VT55 graphics terminal in action.

### **Cache Memory for the PDP-11/34A Processor:**

RT-11 supports cache memory (the KK11-A unit) on the 11/34A processor. Cache memory does not affect the system except to increase the speed of memory accesses. RT-11 error logging detects and reports cache memory errors.

### **MSV11-DD Memory for the LSI-11:**

RT-11 supports the MSV11-DD memory board unit for the LSI-11 microcomputer. This board enables the user to access up to 30K words of memory with the SJ or FB monitor. The normal high limit is 28K words. A special jumper is required before the user can use the extra 2K words of memory.

The REV11 bootstrap is not compatible with the 30K words option of the MSV11-DD board. The BDV11 bootstrap is required when using the MSV11-DD jumpered for 30K.

### **New Line Interfaces:**

RT-11 multiterminal support includes support for the following line interfaces:

1. DLV11-J serial line interface (four DLV11s on a single board—RT-11 supports two DLV11-Js).
2. DZV11 asynchronous four-line multiplexer for the LSI-11 microcomputer (RT-11 supports one DZV11). The DZV11 was supported in RT-11 V3 also.

## **NEW SYSTEM UTILITY PROGRAMS**

Two system utility programs, RESORC and FORMAT, are new in RT-11.

### **RESORC Utility Program:**

The RESORC program examines the currently-running RT-11 system and displays useful information about the status of the monitor, devices, terminals, and the system configuration.

### **FORMAT Utility Program:**

The FORMAT program writes headers for RK05 disks. It can format an RK05 disk in any unit (0–7) of the device. Formatting an RK05 disk takes approximately 25 seconds.

### **Languages:**

Languages which are available with V3 (FORTRAN IV, BASIC-11, APL-11, MACRO) will also be available with V3B.

**COMPANY CONFIDENTIAL**

**USER LETTER**  
**Jan Fair, SPR Administration**

Customers (and others) have brought to our attention the need for additional information regarding SPR service, particularly as it involves SPR Administration. The following represents our attempt to fulfill this need. Your comments and suggestions are most welcome.

**HOW TO MAKE THE BEST USE OF SPR FORM**

**What WE Can Do for YOU**

1. Blank SPR forms are available upon request in the desired quantities through SPR Administration (P.O.Box F) and your local office/SPR Center.
2. Copies of the SPR acknowledgment and answer are sent to the appropriate DIGITAL Office/SPR Center for their information.
3. SPRs marked *SOFTWARE ERROR* or *INQUIRY* will have a response for supported Category A and B products. These SPRs should refer to suspected deficiencies in the software.
4. SPRs marked *FYI* or *SUGGESTION* are forwarded to the pertinent software group for information purposes, and are responded to at their discretion.
5. SPRs marked *DOCUMENTATION ERROR* should report those problems dealing with software manuals or newsletters, and will be forwarded to the pertinent software group.

**What YOU Can Do For US**

1. Customer Name and Address and Problem Statement should always be typed or printed clearly.
2. SPRs should not be used for problems concerning software policy, software distribution, or hardware. Your local office should be contacted in these cases.
3. It would be most helpful to all concerned, if problems with patches are reported as soon as possible.
4. For security SPRs, it is imperative that the *DO NOT PUBLISH* box be marked.
5. It would be helpful if tapes submitted with SPRs are labeled (track and density), and have a directory attached.
6. Should you ever receive an unacceptable SPR response, please contact us or the appropriate SPR Center so that the response may be readdressed.



CTS-3000 V3  
ISMUTL

Seq 11 R  
1 of 1

LEGAL CHARACTERS IN ISAM RECORDS (ES)

ISAM is capable of handling any arbitrary character as a key or data value. The ISAM utility (ISMUTL), however, is not.

In the course of REORGing an ISAM file, ISMUTL produces intermediate, sequential work files. When reading these files back in, any character in a key or data record which has an ASCII code identical to a DIBOL record terminator or null character, will cause premature truncation of the record and subsequent malfunction of ISMUTL. These characters are:

<u>Character</u>	<u>Decimal Code</u>
Null	0
HT	9
LF	10
VT	11
FF	12
CR	13
↑Z	26
Esc	27

Users are urged to avoid the inclusion of any of the above characters in ISAM data records. If such characters are included, the users will be obliged to supply their own ISAM LOAD and REORD functions.

LEGAL CHARACTERS IN ISAM RECORDS (ES)

ISAM is capable of handling any arbitrary character as a key or data value. The ISAM utility (ISMUTL), however, is not.

In the course of REORGing an ISAM file, ISMUTL produces intermediate, sequential work files. When reading these files back in, any character in a key or data record which has an ASCII code identical to a DIBOL record terminator or null character, will cause premature truncation of the record and subsequent malfunction of ISMUTL. These characters are:

<u>Character</u>	<u>Decimal Code</u>
Null	0
HT	9
LF	10
VT	11
FF	12
CR	13
↑Z	26
Esc	27

Users are urged to avoid the inclusion of any of the above characters in ISAM data records. If such characters are included, the users will be obliged to supply their own ISAM LOAD and REORD functions.

LEGAL CHARACTERS IN ISAM RECORDS (ES)

ISAM is capable of handling any arbitrary character as a key or data value. The ISAM utility (ISMUTL), however, is not.

In the course of REORGing an ISAM file, ISMUTL produces intermediate, sequential work files. When reading these files back in, any character in a key or data record which has an ASCII code identical to a DIBOL record terminator or null character, will cause premature truncation of the record and subsequent malfunction of ISMUTL. These characters are:

<u>Character</u>	<u>Decimal Code</u>
Null	0
HT	9
LF	10
VT	11
FF	12
CR	13
↑Z	26
Esc	27

Users are urged to avoid the inclusion of any of the above characters in ISAM data records. If such characters are included, the users will be obliged to supply their own ISAM LOAD and REORD functions.

RT-11 Software Dispatch, May 1978

MU BASIC/RT-11 V1

Seq 7 N  
1 of 1

ADDITIONAL FILES ON RELEASE KIT (MUB\*.\* ) (SPR11-16503 CF)

The following files listed under MISCELLANEOUS in the RT-11 V3 Software Dispatch Review (October 1977) as supplied with RT-11 V3 may be ignored:

MUBET1.OBJ  
MUBLNK.COM  
MUBRTE.OBJ  
MUBSID.OBJ  
MUBTAB.OBJ  
MUBXT1.OBJ  
MUBZN1.OBJ  
MUBZ1.OBJ.

They were included in the kits for a purpose that was subsequently overridden.

ComponentSequenceMon/Yr

RT-11  
CUMULATIVE INDEX  
MAY 1978

This is a complete listing of all articles for current versions of RT-11 and related products. In the case of subordinate software, missing sequence numbers may pertain to problems unique to interaction with previous versions of the same product.

IMPORTANT!

Retracted articles are indicated: RETRACTION.

Flags are currently being installed for all articles. The flags and definitions are as follows:

M = Mandatory patch. These are critical patches which each customer is required to install.

O = Optional patch. These articles are applicable only if the reported problems have occurred at the customer site or if they are unique to his operation.

R = Restriction. These problems are not patchable in released software. Restrictions are reviewed and corrected when possible as part of the normal release cycle.

N = NOTE. This information may be helpful to the user.

ComponentSequenceMon/Yr

APL-11 V1

APL.SAV PROGRAM PATCHES

ERRONEOUS "DEFINITION ERROR" DURING FUNCTION EDITING	01 M	Nov 77
LOSS OF LOWER-CASE ON RE-ENTRY TO APL-11	02 M	Nov 77
APL WORKSPACE	03 R	Nov 77
"SYSTEM ERROR"S GENERATED BY NULL LINE ELEMENTS	04	Dec 77
INTERNAL MEMORY ALLOCATION PROBLEMS	05 M	Dec 77
ERROR FOR SCALAR RESULT OF DECODE OR INNER PRODUCT OPERATION	06 M	Feb 78
SYSTEM ERROR ON PARAMETER RETURN	07 M	May 78

BASIC/RT-11 V01B-01

HALT OR OTHER SYSTEM FAILURE AFTER USE OF BASIC EXTENSIONS	01	Jan 76
BUFFER STORAGE OVERFLOW ERROR	02	Feb 76
BASIC/RT-11 USED WITH EAE HARDWARE INCORRECTLY HANDLES THE VALUE -32768	03	May 76
CALL TO DFIX CAUSES DISPLAY TO GO BLANK	04	Aug 76
USING R5 IN ASSEMBLE LANGUAGE SUBROUTINES	05	Dec 76
BASIC VIRTUAL FILES ARE NOT FORTRAN COMPATIBLE	06 M	Aug 77
TAB FUNCTION CANNOT BE MOVED	07 M	Feb 77

DOCUMENTATION

BASIC/RT-11 LANGUAGE REFERENCE MANUAL		
APPENDIX H	01	Dec 75

BASIC/RT-11 EXTENSIONS V1

"IPK" SUBROUTINE	01	Aug 77
SAMPLING A/D CHANNEL NO. 15	02	Aug 77
SAMPLING AR11	03	Sep 77
"CLRD" AND "PUTD" ROUTINES	04	Nov 77
"SETR" AND "WAIT" COMBINATION MAY FAIL	05	Apr 78

CTS-300 V3

CTS-300 V03 RELEASE NOTES	01	Apr 77
USE OF RSTAT WITH ISAM FILES	02 R	Aug 77
PATCH NUMBERS AND TITLES	03	Nov 77

<u>Component</u>	<u>Sequence</u>	<u>Mon/Yr</u>
<b>DECFORM</b>		
DECFORM ERRORS	01	Apr 77
REPLACEMENT PAGES	02	Apr 77
SEARCHMODE AND RENAM PROBLEM - NEW VERSION NUMBER	03	Jun 77
EXTRA CHARACTERS AT STATEMENT END	04	Jun 77
FOCOMP INCORRECTLY ALLOCATES AN EXTRA CHARACTER	05	Nov 77
REPLACEMENT PAGES	06	Aug 77
DECFORM RESTRICTIONS	07	Sep 77
CONDITIONAL GOTO AND CONDITIONAL SKIP	08	Oct 77
DECFORM PROBLEMS AND RESTRICTIONS	09 R	Nov 77
HANG ON EXIT	10	Jan 78
TWO PROBLEMS IN FOCOMP	11 M	Feb 78
EOF AFTER CHANGED RECORD	12 M	Mar 78
LOST RECORD ON DUPLICATE KEY	13 M	Apr 78
MESSAGE FOR SPEED READERS	14 M	Apr 78
EXCITING DECFORM VIA FIVE-PART QUESTION	15 M	May 78
<b>DOCUMENTATION</b>		
MULTIVOLUME FILES ON MAGTAPE	01 N	Feb 78
PAGE CORRECTION	02	Apr 78
DOCUMENT ERROR	03	Apr 78
<b>DICOMP</b>		
IMPROPER GLOBAL INFORMATION	01	Jul 77
COMMENT CAUSES ERROR	02	Aug 77
<b>FILEX</b>		
RESTRICTION ON FILEX	01	Sep 77
FILEX INFORMATION AND RESTRICTION	02 R	Mar 78
<b>ISMUTL</b>		
INDEXING PROBLEM	01	Jul 77
WRONG RECORD COUNT	02	Jul 77
CTS-300 SYSTEM REFERENCE MANUAL	03	Oct 77
INCORRECT APPEND CALCULATION	04	Sep 77
ERR 16 IN REORG	05	Oct 77
THREE PROBLEMS IN ISMUTL	06 M	Jan 78
REPLACEMENT PAGES	07 N	Feb 78
WRONG FILE SPACE ALLOCATION	08 M	Apr 78
ERRONEOUS ERROR MESSAGE	09 M	Apr 78
ERROR 28	10 M	Apr 78
LEGAL CHARACTERS IN ISAM RECORDS	11 R	May 78
<b>LPTSPL</b>		
NO CONTINUE AFTER PROGRAM ABORT	01 M	May 78
<b>SINGLE USER DIBOL</b>		
SPURIOUS I/O ERRORS DURING ISAM STORE	01	Jun 77
CHANGE READS STATEMENT TO ACCEPT 8-BIT ASCII	02	Apr 77
LOCASE CONVERTS UNDERLINE TO RUBOUT	03	Jun 77
ISAM RECORDS CROSSING BLOCK BOUNDARIES	04	Aug 77
PROBLEM WITH 32KB OR LESS	05	Sep 77
REPLACEMENT PAGES	06	Oct 77
"NOT ENOUGH MEMORY" CONDITION	07 M	Jan 78
RECORDS BEING LOST	08 M	Feb 78
RUNNING V3 ON LSI	09 M	Apr 78
<b>SORTG</b>		
TAGSORTS NOT ALLOWED ON ISAM FILES	01	May 77
CORRECTION TO VERSION "A" PATCH	02	Oct 77
<b>SORTM</b>		
I/O ERROR INTERPRETED AS AN INPUT END OF FILE	01	Apr 77
NEGATIVE NUMBERS IN SORT/MERGE	02	Oct 77
SORTING CARETS	03 M	Jan 78
INCORRECT RECORD COUNT	04 M	Feb 78
FIRST RECORD OUT OF ORDER	05 M	Mar 78
<b>TSD</b>		
CHANGE READS STATEMENT TO ACCEPT 8-BIT ASCII	01	Apr 77
REPLACEMENT PAGES	02	Apr 77
PROGRAM SIZE CALCULATIONS FOR TSD	03	May 77
I/O RACE CONDITION	04	Jun 77
GARBLIED OUTPUT DUE TO ALPHA OR DECIMAL DISPLAYS	05	May 77

<u>Component</u>	<u>Sequence</u>	<u>Mon/Yr</u>
RENAM FEATURE OF DIBOL	06	Jun 77
LOCASE CONVERTS UNDERLINE TO RUBOUT	07	Jun 77
ISAM FILE SHARING PROBLEM	08	Jun 77
IMPOSSIBLE TRAP ON OVERLAYING	09	Jun 77
ISAM RECORDS CROSSING BLOCK BOUNDARIES	10	Aug 77
RECORDS BEING LOST	11 M	Feb 78
PERMANENTLY LOCKED GROUP	12 M	Mar 78
RUNNING V3 ON LSI	13 M	Apr 78
CLOSING ISAM FROM AN EXTERNAL SUBROUTINE	14 M	Apr 78
PROBLEM WITH ISAM INPUT	15 M	Apr 78

CTS-300 V3 AND CTS-300/DIS V3.5

ISAM REPAIR PROGRAM	01 O	Mar 78
---------------------	------	--------

CTS-300 V4

DECFORM

ADDITIONAL INFORMATION ON MATH OPTION	01 N	Dec 77
UNDEFINED GLOBALS WITH DECFORM	02	Jan 78
TWO PROBLEMS IN FOCOMP	03 M	Feb 78
EOF AFTER CHANGED RECORD	04 M	Mar 78
LOST RECORD ON DUPLICATE KEY	05 M	Apr 78
MESSAGE FOR SPEED READERS	06 M	Apr 78

DICOMP

TRAP TO 4 UNDER XM	01 M	Feb 78
TRAP TO 10 UNDER FB	02 M	Feb 78

DOCUMENTATION

REPLACEMENT PAGES	01 N	Dec 77
-------------------	------	--------

ISMUTL

THREE PROBLEMS IN ISMUTL	01 M	Dec 77
WRONG FILE SPACE ALLOCATION	02 M	Apr 78
ERRONEOUS ERROR MESSAGE	03 M	Apr 78
ERROR 28	04 M	Apr 78
LEGAL CHARACTERS IN ISAM RECORDS	05 R	May 78

LPTSPL

JOB MISHANDLING	01 M	Jan 78
-----------------	------	--------

REDUCE

MULTIPLE FILE PROBLEM	01 M	Jan 78
-----------------------	------	--------

SINGLE USER DIBOL

PROBLEM WITH CLOSING A FILE	01 M	Dec 77
RANDOM ACCESS PROBLEM	02 M	Jan 78
MINUS ZERO	03 M	Jan 78
LPQUE DOES NOT WORK	04 M	Jan 78
CHANNEL 1	05 M	Jan 78
FIELD EDITING	06 M	Jan 78
WRONG ERROR MESSAGE	07 M	Feb 78
MINUS ZERO	08 M	Feb 78
S.U. DIBOL WORKS ONLY UNDER XM	09 M	Feb 78
RECORDS BEING LOST	10 M	Feb 78
NO SINGLE USER ON 11/10	11 M	Feb 78
RENAME PROBLEM	12 M	Apr 78
NO MAGTAPE IN V4	13 M	Apr 78

SORTG

KDTYP MISSING	01 M	Feb 78
---------------	------	--------

SORTM

SORTING CARETS	01 N	Dec 77
TAGSORTS WITH MULTIPLE KEYS	02 M	Jan 78
FIRST RECORD OUT OF ORDER	03 M	Mar 78

STATUS.TSD

WRONG JX INFORMATION	01 M	Dec 77
PENDING MESSAGES	02 M	Jan 78
PROBLEM DURING JOB STARTUP	03 M	Mar 78

<u>Component</u>	<u>Sequence</u>	<u>Mon/Yr</u>
<b>TSD</b>		
TNMBR TRAPS TO 4	01 M	Jan 78
RANDOM ACCESS PROBLEM	02 M	Jan 78
MINUS ZERO	03 M	Jan 78
DELETE CAUSES STACK OVERFLOW	04 M	Jan 78
FIELD EDITING	05 M	Jan 78
PROBLEM WITH ISAM INPUT	06 M	Jan 78
SEND CAUSES STACK OVERFLOW	07 M	Feb 78
STATUS GIVES FALSE REPORT	08 M	Feb 78
FILE SHARING	09 M	Feb 78
CHANNEL IN USE PROBLEM	10 M	Feb 78
PROGRAMS CREATED IN REGION 0	11 M	Feb 78
IMPLICIT JOB STARTUP PROBLEM	12 M	Feb 78
PENDING MESSAGES DESTROY SYMBOL TABLE	13 M	Feb 78
TERMINALS IGNORED	14 M	Feb 78
TROUBLE WITH TSD UNDER FB	15 M	Feb 78
MEMORY FAULT WITH SEND/RECV	16 M	Feb 78
PERMANENTLY LOCKED GROUP	17 M	Mar 78
SLOW TERMINAL I/O	18 M	Mar 78
PROBLEM WITH FORCED JOB AND TERMINAL NUMBER	19 M	Mar 78
INCORRECT CHECK FOR FREE SPACE	20 M	Mar 78
SYSGEN/TSDGEN PROBLEM	21 M	Mar 78
OPENING LP: GENERATES ERRORS	22 M	Mar 78
RECORDS BEING LOST	23 M	Apr 78
BAD I/O, FLAG NOT CLEARED	24 M	Apr 78
CLOSING ISAM FROM EXTERNAL SUBROUTINE	25 M	Apr 78
DISPLAY FROM DETACHED PROGRAM TO DETACHED TERMINAL	26 M	Apr 78
NO MAGTAPE IN V4	27 M	Apr 78
BASE LEVEL 2	28 M	Apr 78
R6 STACK OVERFLOW	29 M	May 78

CTS-300/DIS V3.5

USE OF RSTAT WITH ISAM FILES	01 R	Nov 77
<b>DECFORM</b>		
SEARCHMODE AND RENAM PROBLEM - NEW VERSION NUMBER	01	Oct 77
MICRO CODE CAUSES TRAP TO 10	02	Oct 77
DECFORM RESTRICTIONS	03	Nov 77
EXTRA CHARACTERS AT STATEMENT END	04	Nov 77
FOCOMP INCORRECTLY ALLOCATES AN EXTRA CHARACTER	05	Nov 77
CONDITIONAL GOTO AND CONDITIONAL SKIP	06	Nov 77
DECFORM PROBLEMS AND RESTRICTION	07	Nov 77
HANG ONE EXIT	08 M	Jan 78
TWO PROBLEMS IN FOCOMP	09 M	Feb 78
EOF AFTER CHANGED RECORD	10 M	Mar 78
NEGATIVE NUMBER ENDING IN ZERO	11 M	Mar 78
LOST RECORD ON DUPLICATE KEY	12 M	Apr 78
MESSAGE FOR SPEED READERS	13 M	Apr 78
EXITING DECFORM VIA FIVE-PART QUESTION	14 M	May 78
<b>DICOMP</b>		
IMPROPER GLOBAL INFORMATION	01	Nov 77
COMMON CAUSES ERROR	02	Nov 77
<b>DOCUMENTATION</b>		
MULTIVOLUME FILES ON MAGTAPE	01 N	Feb 78
PAGE CORRECTION	02 N	Apr 78
DOCUMENT ERROR	03 N	Apr 78
<b>FILEX</b>		
RESTRICTION ON FILEX	01 R	Nov 77
FILEX INFORMATION AND RESTRICTION	02 R	Mar 78
<b>ISMUTL</b>		
INDEXING PROBLEM	01	Nov 77
INCORRECT APPEND CALCULATION	02	Nov 77
ERR 16 IN REORG	03	Nov 77
WRONG RECORD COUNT	04	Nov 77
THREE PROBLEMS IN ISMUTL	05	Jan 78
REPLACEMENT PAGES	06 N	Feb 78

<u>Component</u>	<u>Sequence</u>	<u>Mon/Yr</u>
WRONG FILE SPACE ALLOCATION	07 M	Apr 78
ERRONEOUS ERROR MESSAGE	08 M	Apr 78
ERROR 28	09 M	Apr 78
LEGAL CHARACTERS IN ISAM RECORDS	10 R	May 78
<b>LPTSPL</b>		
NO CONTINUE AFTER PROGRAM ABORT	01 M	May 78
<b>SINGLE USER DIBOL</b>		
LOCASE CONVERTS UNDERLINE TO RUBOUT	01	Oct 77
ISAM RECORDS CROSSING BLOCK BOUNDARIES	02	Nov 77
PROBLEM IN 32K OR LESS	03	NOV 77
"NOT ENOUGH MEMORY" CONDITION	04	JAN 78
SPURIOUS I/O ERRORS CURING ISAM STORE	05	JAN 78
RECORDS BEING LOST	06 M	Feb 78
<b>SORTG</b>		
TAGSORTS NOT ALLOWED ON ISAM FILES	01	Oct 77
CORRECTION TO VERSION "A" PATCH	02	Nov 77
<b>SORTM</b>		
NEGATIVE NUMBERS IN SORT/MERGE	01	Nov 77
SORTING CARETS	02 N	Jan 78
INCORRECT RECORD COUNT	03 M	Feb 78
FIRST RECORD OUT OF ORDER	04 M	Mar 78
<b>TSD</b>		
I/O RACE CONDITION	01	Sep 77
ERRONEOUS PATCH TO TSD	01a	Nov 77
INCORRECT JOB NUMBER AT STARTUP TIME	02	Sep 77
PROBLEM WITH RENAM	03	Sep 77
LOCASE CONVERTS UNDERLINE TO RUBOUT	04	Oct 77
ISAM FILE SHARING PROBLEM	05	Nov 77
IMPOSSIBLE TRAP ON OVERLAYING	06	Nov 77
ISAM RECORDS CROSSING BLOCK BOUNDARIES	07	Nov 77
RECORDS BEING LOST	08 M	Feb 78
PERMANENTLY LOCKED GROUP	09 M	Mar 78
CLOSING ISAM FROM AN EXTERNAL SUBROUTINE	10 M	Apr 78
PROBLEM WITH ISAM INPUT	11 M	Apr 78
<b>DECLAB-03 FORTRAN EXTENSIONS</b>		
FORTRAN CRASHES AFTER RUNNING PROGRAM WITH "SETR"	01 M	Mar 78
<b>FOCAL/RT-11 V1B</b>		
FOR COMMAND WITHOUT AN ARGUMENT	01	Oct 75
OPERATE COMMAND CAUSES ERROR	04	Aug 76
FCLK ROUTINE GIVES INCORRECT TIME	05	Aug 76
"LIBRARY ASK" COMMAND	06 O	Feb 77
"/Z" SWITCH	07	Aug 77
@START NOT WORKING WHEN DOWN-LINE LOADING	08 M	Mar 78
<b>FORTRAN IV/RT-11 V1C</b>		
CLARIFICATION: INTERFACING ASSEMBLY LANGUAGE ROUTINES TO FORTRAN	01	Feb 75
FLOATING MULTIPY FAILS TO DETECT UNDERFLOW IN NHD VERSION OF OTS	42	May 76
COMPILING MULTIPY PROGRAM UNITS FROM A SINGLE CASSETTE	43	May 76
STAND-ALONE FORTRAN STACK USAGE	44	May 76
WRITING ON READ-ONLY FILE	46	May 76
WRITING BEYOND END OF RANDOM ACCESS FILE	47	May 76
ASYNCHRONOUS I/O, EVENT DRIVER I/O, AND FORTRAN PROGRAMS	49	MAY 76
OBJECT TIME FORMATTING WITH H FORMAT SPECIFICATION, FORMATTED RECORD WRITING GREATER THAN 132 CHARACTERS IN LENGTH MAY FAIL	51	May 76
OBJECT TIME ENCODE/DECODE	52	Sep 76
CLARIFICATION OF I/O LIST ELEMENTS	53	Jun 76
MORE THAN 19 NULL ARGUMENTS CAUSE FATAL ERROR Y	54	Jul 76

<u>Component</u>	<u>Sequence</u>	<u>Mon/Yr</u>
CALL ASSIGN WITH FILE NAME TERMINATED WITH SPACE ABORTS	55	Jul 76
I-FORMAT CONVERSION ERROR	56	Jul 76
J=J-J GIVES INCORRECT RESULTS	57	Jul 76
LISTING FILES DIRECTED TO MAGTAPE	58	Jul 76
CALL CLOSE ON INACTIVE UNIT	59	Aug 76
ARITHMETIC STATEMENT FUNCTIONS WITH NO ARGUMENTS	60	Aug 76
COMPUTED GO TO	61	Aug 76
CLARIFICATION: COMPARING ASCII DATA ITEMS	62	Aug 76
IBEF NOT PROPERLY DECREMENTED	63	Aug 76
LPS DEVICE CONFLICT CAUSED BY CALL SETR AFTER CALL RTS	64	Aug 76
LOGICAL*1 VARIABLES AS DO-LOOP TERMINATORS	65	Sep 76
IADC AFTER RTS DOES NOT WORK	66	Sep 76
MISSING LEFT QUOTE IN CALL STATEMENT CAUSES COMPILER TO TRAP	67	Sep 76
CALL OR FUNCTION ARGUMENTS MAY CAUSE THE COMPILER TO TRAP	68	Sep 76
INCORRECT CODE GENERATION FOR ASSIGNMENT STATEMENTS INVOLVING BOTH INTEGER*2 AND INTEGER*4 SUB-SCRIPTED ARRAYS	69	Nov 76
WRITING RECORDS GREATER THAN 132 BYTES LONG	70	Sep 76
USING FORTRAN COMPLETION ROUTINES WITH SYSLIB	71	Oct 76
EXTENDING COMMON BLOCK BACKWARDS MAY CAUSE TRAP TO 10	73	Oct 76
INCORRECT CODE GENERATION FOR CERTAIN FUNCTION CALLS IN SUBSCRIPT LISTS	74	Dec 76
CERTAIN "ENCODE/DECODE" STATEMENTS ARE FLAGGED AS SYNTAX ERRORS	75 M	Feb 77
STACK OVERFLOW CONDITION CAN RESULT IN SYSTEM FAILURE	76	Mar 77
END-OF-LINE COMMENTS	77	Apr 77
RUNNING FORTRAN PROGRAMS IN FOREGROUND MODE	78	May 77
FORMAT STATEMENT PROCESSING	79	MAY 77
SUBROUTINE NAMING CONFLICT	80	Nov 77
PLOT55 DESCRIPTION	81	Nov 77
ASSIGNMENT STATEMENTS WITH EQUIVALENCE VARIABLES AS THE TARGET	82 R	Dec 77
ILLEGAL MEMORY REFERENCE ERROR	83	Jan 78
DEVICE CONFLICT ERROR	84 R	Jan 78
FORTRAN CRASHES AFTER RUNNING PROGRAM WITH "SETR"	85 M	Feb 78
RUNNING PROGRAM WITH "SETR"	86 M	Mar 78
TWO PROBLEMS WITH THE RT-11/FORTRAN GRAPHIC EXTENSIONS	87	May 78
TWO PROBLEMS WITH THE RT-11/FORTRAN GRAPHIC EXTENSIONS	88 M	Apr 78
<u>DOCUMENTATION</u>		
FORTRAN/RT-11 COMPILER AND OBJECT TIME SYSTEM USER'S MANUAL		
ASSIGN SUBROUTINE DOES NOT FUNCTION AS STATED	01	Jun 75

#### FORTRAN IV/RT-11 V2

<u>Component</u>	<u>Sequence</u>	<u>Mon/Yr</u>
<u>COMPILER</u>		
KNOWN FORTRAN IV V2 BUGS	01 N	Feb 78
USE OF THE FIND STATEMENT	02 M	Feb 78
RAISING COMPLEX NUMBERS	03 M	Feb 78
EXTRA CHARACTERS MAY RESULT IN COMPILER TRAPPING	04 M	Feb 78
SIMRT	05 M	Feb 78
SIMRT CONTINUED	06 M	Feb 78
TRANSMITTING ASCII DATA	07 R	Mar 78
IN-LINE CODE	08 N	Mar 78
DOSPOSE= 'KEEP' OPTIN	09 R	Apr 78
CRASH DUMPS	10 N	Apr 78
SYNTAX ERRORS IN SOURCE PROGRAM MAY CAUSE COMPILER TO ABORT	11 M	May 78

#### GAMMA-11 F/B V2

DATA ANALYSIS PROGRAM	01	Feb 77
STUDY TRANSFER PROGRAM DISPLAYS TOO MANY INDEX LINES PER PAGE	02	Feb 77
BASIC AND FOCAL	03	Feb 77
BACKGROUND PROGRAM CAN HANG THE FOREGROUND TERMINAL	04	Feb 77
CNTL/C UNDER SINGLE JOB MONITOR	05	Feb 77

<u>Component</u>	<u>Sequence</u>	<u>Mon/Yr</u>
CROSSHAIRS FAIL TO APPEAR IN SLICE	06	Feb 77
UNDOCUMENTED PROGRAMS	07	Mar 77
FORTRAN SUPPORT INCORRECTLY CONVERTS DATA AND TIME OF INQUISITION	08	May 77
"RS" COMMAND IS INCORRECTLY	09	Jun 77
<u>DOCUMENTATION</u>		
FORTRAN/RT-11 COMPILER AND OBJECT TIME SYSTEM USER'S MANUAL		
ASSIGN SUBROUTINE DOES NOT FUNCTION AS STATED	01	Jun 75
<b>LABORATORY APPLICATIONS-11 V3</b>		
A NEW MODULE TO ENHANCE DATA FLOW WITHIN LA-11	01	Oct 76
<b>HISTO.MAC</b>		
ACQUIRING AND PROCESSING HISTOGRAM DATA	01	Sep 76
<b>LABMAC.SML</b>		
ERRONEOUS MACRO	01	Sep 77
<b>PEAK.MAC</b>		
WIDE PEAKS	01	MAR 76
PEAK PROBLEMS AND CORRECTIONS	02	Jul 76
ARITHMETIC CORRECTION FOR PEAK AREA	03	Dec 76
MISSING PATCH IN RELEASE NOTES	04	Oct 77
<b>SPARTA</b>		
LPS AND AR-11 VECTOR AND STATUS REGISTER	01	Dec 75
USING SPARTA AND FLOATING POINT BUFFERS	02	Feb 76
AR-11 TIMING PROBLEMS WITH ADSAM AND SPARTA	03	Feb 76
FFT SCALING CORRECTION	04	Feb 76
SCALE FACTOR CORRECTION FOR SPARTA COMMANDS FAC AND FCC	05	Mar 76
DATA DISPLAYS USING LA-11	06	Mar 76
DATA PREPARATION FOR SPARTA COMMANDS FAC AND FCC	07	Apr 76
SPARTA CORRECTIONS FOR POINT-PLOT DISPLAY	08	Apr 76
ADDING COMMANDS TO SPARTA	09	May 76
CORRECTION FOR THE DPV COMMAND WITH POINT PLOT DISPLAY	10	Jun 76
GENERAL SUBROUTINE MODULE FOR EAE	11	Jun 76
INCORRECT PHASE ANGLE CALCULATION	12	Oct 76
"MOU" AND "MIN" COMMANDS CAN BE READ OUT AND IN CORRECTLY	13	Jan 77
MULTIPLE SYNCH PULSES	14	Jan 77
AUTO AND CROSS CORRELATION	15	Jan 77
ALLOCATING MORE THAN 16K BUFFERS IN SPARTA	16	Feb 77
A/D SAMPLING: FAST MODE	17	Jul 77
A/D SAMPLING: FAST MODE EXIT	19 M	Mar 78
<b>SWEEP.MAC</b>		
SWEEP SAMPLING: FAST MODE	01	Aug 77
<b>THRU</b>		
HOW TO START DATA ACQUISITION WHEN CSTART EQUALS ZERO	01	Jun 76
MULTICHANNEL SINGLE RATE SCHMIT TRIGGER SWITCH BOUNCE	02	Dec 76
CONTINUOUS SAMPLING: CONDITIONAL ASSEMBLY ERRORS	03	Jul 77
CONTINUOUS SAMPLING: DMA WITH DUAL SAMPLE + HOLD	04	Jul 77
DOCUMENTATION CORRECTIONS	05	Nov 77
<b>LV11/RT-11 PLOTTING PACKAGE V2</b>		
SUBROUTINE PLOT DOES NOT CORRECTLY REPRODUCE VT11 PICTURE	01 M	Apr 78
<b>MISCELLANEOUS DOCUMENTATION</b>		
<b>AR-11 USER'S GUIDE</b>		
PROGRAM EXAMPLE ERROR IN AR-11 USER'S GUIDE	01	May 76
<b>BASIC-11 LANGUAGE MANUAL</b>		
STOP STATEMENT CLOSSES FILES	01	Sep 75
MISSING = SIGN	02	Oct 75

<u>Component</u>	<u>Sequence</u>	<u>Mon/Yr</u>
MU BASIC/RT-11 V1		
BUILDING MU BASIC/RT-11 UNDER RT-11 V2C	01	Feb 76
REMOTE TERMINAL SUPPORT ON MODEMS	02	May 76
OVERLAY... LINE WORKS INCORRECTLY	03	May 76
USING IMMEDIATE MODE "GOSUBs"	04	Dec 76
CLOCK LOSES TIME ON RT-11 WHEN RUNNING MU BASIC	05	Jul 77
REM STATEMENTS	06	Feb 78
ADDITIONAL FILES ON RELEASE KIT (MUB*.*)	07 N	May 78
MU BASIC/RT-11 SYSTEM INSTALLATION GUIDE		
DEC-11-LIBMA-A-DN1		
REPLACEMENT PAGES	01	Jan 77
REPLACEMENT PAGES	02 N	Jan 78
REPLACEMENT PAGES	03 N	Jan 78
PDL/RT-11 V1		
CLARIFICATION OF SEARCH FAILURE IN SUBROUTINE FIND	01	Apr 77
FIND SUBROUTINE	02	Apr 77
REPLACEMENT PAGES	03	Jun 77
PATCHES TO PDL	04 M	Mar 78
SUBROUTINE QKGT	05 M	Mar 78
REMOTE/RT-11 V1		
SCHEDULER DOES NOT PROPERLY SET PROCESSOR PRIORITY	01	May 76
NOEDIT- 0 HALTS	02	May 76
NUSERS=1 STAYS IN A FILE MESSAGE LOOP	03	May 76
INCORRECT SWAP AREA ALLOCATION FOR FOUR OR MORE USERS	04	May 76
REBOOT FROM SATELLITE DURING EDIT HANGS HOST	05	Jun 76
HARD ERROR ON LOOKUP IS FATAL	06	Jun 76
SECONDARY MODE PROGRAM LOAD FEATURE NOT COMPLETELY FUNCTIONAL	07	Jun 76
ONE SECOND TIMER FOR LINE TIMEOUTS IS SET INCORRECTLY	08	Aug 76
LINE FEEDS MAY CAUSE SYSTEM ERRORS--ASSEMBLY ERROR WITH DIAL AND NODDC	09	Aug 76
PROPER GENERATION OF REMOTE IS DEPENDENT ON MODULE ORDER	10	Aug 76
ASCII CODES 173 AND 174 DO NOT PRINT	11	Aug 76
IMPROPER FILLER HANDLING FOR VT05	12	Aug 76
SYSTEM CRASHES IF RUN IN FOREGROUND WITHOUT /N	13	Aug 76
"UNSAVE" COMMAND CAUSES SYSTEM ERRORS	14	Dec 76
FLET WILL REMOVE MORE THAN ONE USER FROM THE WAIT QUEUE	15	Dec 76
STACK FOR USER THREE IMPROPERLY SET	16	Dec 76
SECONDARY MODE LOADS DO NOT OPERATE PROPERLY	17	Jan 77
@START COMMAND GIVEN ON TERMINAL WITHOUT SATELLITE CAUSES CRASH	18	Jan 77
"RTSIM" DOES NOT SUPPORT 50 Hz LINE CLOCK	19	Jan 77
CHANNEL ACTIVE ERROR	20	Mar 77
THREE WORDS LOST ON DOWNLINE LOAD	21	Mar 77
CSISPC NOT PROPERLY SIMULATED	22	May 77
EXCEEDING CHARACTERS PER LINE LIMIT	23	Oct 77
@RE IN THE SATELLITE DOES NOT WORK	25 R	Mar 78
"HANG" CONDITIONS	26 R	Apr 78
RT-11 V2C		
BATCH		
/RUN SWITCH IN BATCH COMMAND FAILS	02	Nov 76
BOUNDARY PROBLEM IN BATCH HANDLER	03	Jun 77
DOCUMENTATION		
RT-11 SOFTWARE SUPPORT MANUAL		
APPENDIX D CORRECTIONS	01	Oct 75
INCOMPLETE PATCH IN THE RT-11 SOFTWARE SUPPORT MANUAL	02	Jun 77

<u>Component</u>	<u>Sequence</u>	<u>Mon/Yr</u>
<b>RT-11 SYSTEM GENERATION MANUAL</b>		
REPLACEMENT PAGES	01	Jul 76
INSTRUCTIONS FOR BUILDING DISKETTE SYSTEM	02	Oct 76
INSTRUCTION FOR BUILDING	03	Oct 76
INCORRECT PATCH IN RT-11 SYSTEM GENERATION MANUAL	04	Aug 77
NEW MAGTAPE DRIVES TE10, TE16, AND NEW FORMATTER TM03	05	Aug 77
<b>RT-11 SYSTEM MESSAGE MANUAL</b>		
REPLACEMENT PAGES	01	Jul 76
<b>RT-11 SYSTEM REFERENCE MANUAL</b>		
RT-11 CLARIFICATION	01	Sep 75
INCORRECT MSTAT VALUES	03	Oct 75
CASSETTE AND MAGTAPE ARE NOT LEGAL RT-11 DEVICES		
UNDER FILEX	04	Dec 75
REPLACEMENT PAGES	05	Jul 76
DOCUMENTATION CORRECTION	06	Oct 76
REPLACEMENT PAGES	07 N	Dec 77
<b>RT-11 SYSTEM RELEASE NOTES</b>		
REPLACEMENT PAGES	01	Jul 76
<b>EDIT</b>		
EDIT ERRORS OCCUR WHEN THE FIRST CHARACTER IN THE		
TEXT BUFFER IS A LINE FEED	05	Oct 77
CHARACTER IS LOST WHEN EXECUTING A READ COMMAND	06	Oct 77
EXTRA TEXT APPENDED TO EDIT OUTPUT	07	Oct 77
<b>FILEX</b>		
TRANSFERRING FILES TO DOS FORMAT	02	Sep 76
<b>HANDLER</b>		
PATCHING LP VECTOR	02	Apr 76
LP HANGS SYSTEM	03	May 76
CORRECTIONS AND ENHANCEMENTS TO THE KB HANDLER AND		
INSTALLING HANDLERS	04	Sep 76
PROBLEMS WITH RSX-11D TO RT-11 MAGTAPE TRANSFERS	05	Sep 76
ERRORS IN KB.MAC	06	Jan 77
CAPS-11 CASSETTE FILE HEADERS DIFFER FROM RT-11		
CASSETTE FILE HEADERS	07	Nov 77
READ FROM TT: AFTER A CTRL-Z, SOMETIMES PRINTS		
INCORRECTLY	08	Dec 77
MAGTAPE OPERATIONS	09	Feb 78
<b>LINK</b>		
PERFORMANCE IMPROVEMENT IN LINKER	01	Jul 76
FORTRAN "BLOCK DATA" INITIALIZATIONS ARE INCORRECT		
WHEN LINKED TO A FORTRAN PROGRAM FROM A LIBRARY	02	Oct 76
<b>MONITOR</b>		
ERROR IN F/B	13	Mar 76
FIS EXCEPTION ERROR	17	Apr 76
MIDNIGHT ROLLOVER FOR R/B MONITOR MALFUNCTIONS	19	May 76
RETRACTED ARTICLE	20	XXX XX
GARBAGE OUTPUT TO TERMINAL ON BOOTING	21	Sep 76
DEVICE HANDLERS HAVE A MINIMUM SIZE AND POSITION		
REQUIREMENT	22	Sep 76
LISTINGS SENT TO CONSOLE HANG MONITOR WHEN "GTON"		
IS ACTIVE	23	Feb 77
S/J MONITOR NOT RESPONDING TO CTRL/C AFTER 81 CHAR-		
ACTERS ENTERED AT KEYBOARD	24	Feb 77
CODING ERROR IN READ/WRITE ROUTINE CAUSES TRANSFER		
MANFUNCTION	25	Jun 77
ERRORS OCCUR WHEN SAVING OR EXAMINING PROGRAMS THAT		
OVERLAY KMON	26	Aug 77
BOOTING AN RK06 SYSTEM	27	Oct 77
MESSAGE CHANNEL IS NOT RESET AFTER TASK TERMINATION	28	Nov 77
RESTART LOCATIONS ARE CLEARED WHEN UNLOADING		
CERTAIN HANDLERS	29	Nov 77
READ FROM TT: AFTER A CRTL-Z, SOMETIMES PRINTS		
INCORRECTLY	30	Dec 77

<u>Component</u>	<u>Sequence</u>	<u>Mon/Yr</u>
CORRECTIONS MADE TO READ/WRITE PROGRAMMED REQUESTS ROUTINES	30a	Feb 78
ERROR IN TTYOUT INTERRUPT SERVICE ROUTINE	31 M	Jan 78
INCORRECT IDENTIFIER IN .TWAIT	32	Feb 78
VOLUME DIRECTORY CORRUPTION	33 M	Apr 78
PATCHO		
?ERR 61 MESSAGE FROM PATCHO	02	May 76
PIP		
CODING ERROR IN PIP CREATES OVERSIZED FILES	01 M	Jan 78
SYSLIB		
CALL TO ILUN FUNCTION APPEARS TO LOSE A CHANNEL	01	Jan 77
SYSTEM INFORMATION		
LOW SPEED READER SUPPORT	01	Apr 74
RT-11 V3		
DOCUMENTATION		
TYPOGRAPHICAL ERRORS	01 N	Mar 78
EDIT		
EDIT DOES NOT OPERATE CORRECTLY UNDER XM MONITOR	01 M	Mar 78
MACRO		
.NARG FAILS WHEN AUTOMATIC LABEL GENERATION IS USED	01 M	Apr 78
MONITOR		
INCORRECT IDENTIFIER IN .TWAIT REQUEST CAUSES PROBLEMS	01 M	Mar 78
.CHAIN, .EXIT FROM VIRTUAL JOB; USR MOVING INTO		
PAR1 AREA	02 M	Apr 78
PATCH TO INTERRUPT EXIT ROUTINE	03 M	Apr 78
IMPROPER HANDLING OF THE KW11-P CLOCK	04 M	May 78
UTILITIES		
DUP DEFAULT FILE SIZE AND NULL FILE TYPES ARE INCORRECT	01 M	Mar 78
DIR MAY INCORRECTLY LIST DIRECTORIES OF MAGTAPES	02 M	Mar 78
/L OPTION TO PIP MAY CAUSE SYSTEM CRASH	03 M	Mar 78
LINK OUTPUT INVALID IF OBJ HAS AN EMPTY GSD RECORD	04 M	Mar 78
PAT GIVES FATAL ERROR IF OBJ HAS AN EMPTY RECORD	05 M	Apr 78
EDIT VT11 DISPLAY FUNCTIONS WILL NOT OPERATE UNDER		
XM MONITOR	07 M/R	Apr 78
2780/RT-11		
CORRECTIONS TO 2780 PACKAGE	01	Sep 77
RUNNING 2780 ON RT-11 V3	02	Nov 77
PATCHING THE 2780 IN RT-11 V3	03 M	May 78



## DECUS SPECIAL INTEREST GROUPS

A DECUS Special Interest Group (SIG) is an activity whereby members of the DIGITAL Equipment Computer Users Society who share common interests in a particular field, join together to promote the interchange of information. Specialization may be in application areas such as education or industry, specific software systems such as OS/8 and RSX-11, or a specific main-frame such as the DECsystem-10/20.

SIG members derive numerous benefits from communicating with others who share specialized interests and who may wish to share their experiences. SIG s sponsor business meetings, tutorials, and workshops at the various chapter symposia which fulfill the two-fold purpose of fostering communication among users and between users and DIGITAL. Channeled communication provides DIGITAL and the users with insight into the direction of future developments. SIG s provide direct feedback to DIGITAL's in-house activities and have thereby made substantial contributions to OS/8, RSX-11, RSTS and TOPS-10.

User submitted articles, minutes of local meetings, and letters comprise the major portion of the individual SIG newsletters. Suggestions, hints, bug fixes, program plans, or questions of a non-commercial nature are suitable material for SIG newsletters.

SIG members are encouraged to make presentations at the SIG sessions held during DECUS Symposia.

The semi-annual U.S. Symposia sessions are organized by special interest areas. Submissions received from the user community are reviewed by symposia committee members from the special interest groups for appropriate placement on the agenda.

Special Interest Group participation in the review of programs submitted to the DECUS Program Library provides an opportunity to improve the quality and utility of programs available to you and to fellow users.

DIGITAL standards are issued to DECUS members for review and on the theory and philosophy of the standards. DECUS is a voting member of ANSI X3. Users are encouraged to register their areas of expertise with DECUS and assist with reviewing standards. SIG s often play a role in this process.

Below is a list of U.S. based Special Interest Groups within DECUS.

If you would like information regarding membership in any of the Special Interest Groups, contact DECUS U.S. Chapter, 129 Parker Street, PK3-1/E55, Maynard, Massachusetts 01754 or one of the other DECUS Chapter offices in Kanata, Sidney or Geneva.

MCPU SIG - Multi-CPU Special Interest Group  
NETSIG - Networks Special Interest Group  
Biomed SIG - Biomedical Special Interest Group  
RSTS SIG - RSTS and RSTS/E Special Interest Group  
SIGIG - Special Interest Group on Interactive Graphics  
ESIG - Engineering Applications Special Interest Group  
SIG-18 - 18-Bit Users Special Interest Group  
12-Bit SIG - 12-Bit User Special Interest Group  
RSX-11/IAS SIG  
RT-11 SIG  
EDUSIG - Educational Users Special Interest Group  
DEBUG - Digital Equipment Business Users Group  
MUSIG - Mumps Special Interest Group  
PASCAL SIG  
DBMS SIG  
TECO SIG  
SIGIL - Special Interest Group on Implementation Languages  
LSI-11 SIG  
FOCAL SIG  
STANDARDS SIG



RT-11 SPECIAL INTEREST GROUP

A Special Interest Group has been formed to serve users of RT-11. The organization of the SIG consists of a SIG Chairman and working committees for standards, documentation, library submissions, newsletter, and help for new users.

Submissions to the newsletter should be directed to:

John T. Rasted
CAM Systems, Inc.
17 Brown Street
Waterbury, CT 06702
(203) 757-8010

Other communications can be sent to:

Thomas J. Provost
P. O. Box 95
Middleton, MA 01949
(617) 774-2370
(617) 245-6600 (Boston tie line)

or

Thomas J. Provost
RT-11 SIG Chairman
c/o DECUS
146 Main Street, PK3-1/E55
Maynard, MA 01754
(617) 897-5111, ext: 2414

SIG's activities encompass the following:

- 1. Preparation of a SIG newsletter (user submissions are strongly encouraged).
2. Exchange of user-written programs. This exchange could include TASKS representing user-written extensions to RT-11 (including, but not limited to device drivers) as well as utility and applications programs, etc.
3. Establishment of communications with the DECUS staff to obtain for SIG members early information on RT-11 related additions to the DECUS Library. These communications will also serve to provide prompt testing of such submissions.
4. Establishment of user input to appropriate groups within DEC, so that they will receive user feedback on any additions or needed changes to RT-11. Additionally, SIG members may receive early warning from DEC about RT-11 changes.
5. Establishment of SIG-maintained files of RT-11 errors and error solutions, where they exist, independent of DEC publications.
6. Establishment of RT-11 "Welcome Wagon" type services to aid new users.
7. Coordination of user input to standards and documentation work.

If you wish to become a member of the RT-11 SIG, please fill out the form below and return it to the DECUS Office. (Please type or print).

NAME \_\_\_\_\_ \*DECUS MEMBERSHIP NO. \_\_\_\_\_

AFFILIATION \_\_\_\_\_

ADDRESS \_\_\_\_\_

CITY \_\_\_\_\_ STATE \_\_\_\_\_ ZIP CODE \_\_\_\_\_

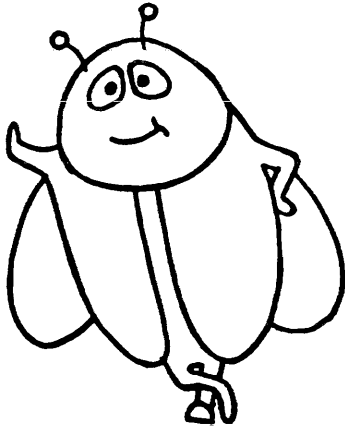
Are you registered with DEC as an RT-11 user? \_\_\_\_\_

Version Number \_\_\_\_\_

Fortran? \_\_\_\_\_

Basic? \_\_\_\_\_

\*Please note one must be a member of DECUS prior to requesting RT-11 SIG involvement. For general membership information, contact the DECUS Office, 146 Main Street, Maynard, MA 01754.



# debug

DEBUG is dedicated to establishing an interchange of ideas between business users of DEC computers in accounting allied applications, and between the users and DEC.

### DEBUG MEMBERSHIP APPLICATION

Name \_\_\_\_\_ Title \_\_\_\_\_  
 Firm \_\_\_\_\_  
 Address \_\_\_\_\_ Telephone \_\_\_\_\_  
 City \_\_\_\_\_ State \_\_\_\_\_ Zip \_\_\_\_\_  
 DECUS NO. \* \_\_\_\_\_

### BACKGROUND AND EXPERIENCES

Like all non-profit service organizations, DEBUG can best serve its members by utilizing the skills, experiences and viewpoints of its own membership. To let us know where your own experiences and interests lie, we ask that you fill out the following vitae form. You may, of course, decline to do so – we will treat your response with respect and confidentiality in any case.

ACADEMIC BACKGROUND	favorite subject area	minor subject area	also studied
BUSINESS AREAS AND/OR FUNCTIONS	most experience with	fair experience with	worked around
COMPUTER SYSTEMS WORKED WITH	favorite system, language	also experienced with	smattering of

\*Please note one must be a member of DECUS prior to requesting DEBUG SIG involvement. For general membership information, contact the DECUS office, 129 Parker Street, PK3-1/E55, Maynard, MA 01754.

I would consider:

- Chairing a DEBUG session
- Organizing a session
- Working with the DEBUG steering committee

2/18/76



**DIGITAL EQUIPMENT COMPUTER USERS SOCIETY**  
**Special Interest Group in Implementation Languages**

**SIGIL**

A Special Interest Group on System Implementation Languages, Tools and Techniques (SIGIL) was formed at the 1973 Fall DECUS Symposium.

The initial goals of the group are to provide the following:

1. Interchange of ideas and modules among programmers working in the system implementation area. The chief aim in this area is to avoid inventing square wheels when someone else has already developed round ones. The contributions in this area can range from core management modules to internal documentation practices, with distribution by newsletter.
2. Work with DEC Software Development for the user community on improving the existing languages used for systems implementation (MACRO-10, BLISS-10 and ALGOL). This is envisioned as a small group of users willing to spend the time and effort necessary.

To make a success of SIGIL, or to widen the area of interest across product lines, requires active participation of the members. Submissions to the newsletter or other communications may be sent to the following address:

SIGIL  
c/o DECUS Office  
146 Main Street/PK3/E55  
Maynard, MA 01754

.....

To join SIGIL, please fill out the form below and return it to the DECUS Office.

Are you a DECUS Member? \_\_\_\_\_ DECUS Membership Number \_\_\_\_\_

NAME \_\_\_\_\_

AFFILIATION \_\_\_\_\_

ADDRESS \_\_\_\_\_

CITY \_\_\_\_\_ STATE \_\_\_\_\_ ZIP CODE \_\_\_\_\_

TELEPHONE NUMBER \_\_\_\_\_

## SOFTWARE PROBLEMS OR ENHANCEMENTS

Questions, problems, and enhancements to DIGITAL software should be reported on a Software Performance Report (SPR) form and mailed to the SPR Center at one of the following DIGITAL Offices: (SPR forms are available from the SPR Center).

AREAS COVERED	SPR CENTER	AREAS COVERED	SPR CENTER
United States, remainder of Far East, Middle East, Africa Latin America	Administrative Services Group, SWS P.O.Box F Maynard MA 01754	Italy	Digital Equipment SPA Viale Fulvio Testi 117 20092 Cinisillo Balsamo Italy
Canada	Digital Equipment Canada P.O.Box 11500 Kanata Canada K2H 8K8 Ontario	Japan	Digital Equipment Corp., INTL 3rd Floor Kowa Building 8-7 Sanban Cho Chiyoda Ku Tokyo 102 Japan
United Kingdom	Digital Equipment Corp., LTD Fountain House Butts Centre RG1 7QN Reading England	New Zealand	Digital Equipment Corp., LTD Challenge House 3 Wolfe Street P.O.Box 2471 Auckland New Zealand 10010
Australia-Melbourne	Digital Equipment Aust. Pty., LTD 60 Park Street South Melbourne Victoria Australia 3205	Belgium, Holland	Digital Equipment BV Kaaip Horndreef 38 3563 AV Utrecht Netherlands
Australia-Sydney	Digital Equipment Aust. Pty., LTD 123 125 Willoughby Road P.O.Box 491 Crows Nest NSW Australia 2065	Denmark, Finland, Norway, Sweden	Digital Equipment Corp., AB Englundavaegen 73 TR 171 41 Solna Sweden
Brazil	Digital Equipment Comercio Ind Rua Batatais 429 Esq AL Campin 01423 Jardim Paulista Sao Paulo 0100 Brazil	Switzerland, Spain, Greece, Romania, Portugal, Bulgaria Yugoslavia	Digital Equipment Corp., SA 20 Quai Ernest Ansermet Boite Postale 23 CH 1211 Geneva Switzerland
Caribbean	De Latin America P.O.Box 11038 Fernando Juncos Sta. Santurce PR 00910	Austria, Poland Hungary, Rumania East Germany, West Germany, Russia, Czechoslovakia	Digital Equipment Corp., GMBH Wallsteinplatz 2 8000 Munchen 40 Germany 8000
France	Digital Equipment Corp., LTD. Centre Silic Cidex L225 18 Rue Saarinen 94533 Rungis France	Israel	DECSYS Computers, LTD 7 Habakuk Street Il-Tel Aviv 63505 Israel

DIGITAL EQUIPMENT CORPORATION, Corporate Headquarters: Maynard, Massachusetts 01754, Telephone: (617)897-5111—SALES AND SERVICE OFFICES: UNITED STATES—ALABAMA, Huntsville • ARIZONA, Phoenix and Tucson • CALIFORNIA, El Segundo, Los Angeles, Oakland, Ridgecrest, San Diego, San Francisco (Mountain View), Santa Ana, Santa Clara, Stanford, Sunnyvale and Woodland Hills • COLORADO, Englewood • CONNECTICUT, Fairfield and Meriden • DISTRICT OF COLUMBIA, Washington (Lanham, MD) • FLORIDA, Ft. Lauderdale and Orlando • GEORGIA, Atlanta • HAWAII, Honolulu • ILLINOIS, Chicago (Rolling Meadows) • INDIANA, Indianapolis • IOWA, Bettendorf • KENTUCKY, Louisville • LOUISIANA, New Orleans (Metairie) • MARYLAND, Odenton • MASSACHUSETTS, Marlborough, Waltham and Westfield • MICHIGAN, Detroit (Farmington Hills) • MINNESOTA, Minneapolis • MISSOURI, Kansas City (Independence) and St. Louis • NEW HAMPSHIRE, Manchester • NEW JERSEY, Cherry Hill, Fairfield, Metuchen and Princeton • NEW MEXICO, Albuquerque • NEW YORK, Albany, Buffalo (Cheektowaga), Long Island (Huntington Station), Manhattan, Rochester and Syracuse • NORTH CAROLINA, Durham/Chapel Hill • OHIO, Cleveland (Euclid), Columbus and Dayton • OKLAHOMA, Tulsa • OREGON, Eugene and Portland • PENNSYLVANIA, Allentown, Philadelphia (Bluebell) and Pittsburgh • SOUTH CAROLINA, Columbia • TENNESSEE, Knoxville and Nashville • TEXAS, Austin, Dallas and Houston • UTAH, Salt Lake City • VIRGINIA, Richmond • WASHINGTON, Bellevue • WISCONSIN, Milwaukee (Brookfield) • INTERNATIONAL—ARGENTINA, Buenos Aires • AUSTRALIA, Adelaide, Brisbane, Canberra, Melbourne, Perth and Sydney • AUSTRIA, Vienna • BELGIUM, Brussels • BOLIVIA, La Paz • BRAZIL, Rio de Janeiro and Sao Paulo • CANADA, Calgary, Edmonton, Halifax, London, Montreal, Ottawa, Toronto, Vancouver and Winnipeg • CHILE, Santiago • DENMARK, Copenhagen • FINLAND, Helsinki • FRANCE, Lyon, Grenoble and Paris • GERMAN FEDERAL REPUBLIC, Cologne, Frankfurt, Hamburg, Hannover, Munich, Nuremberg, Stuttgart and West Berlin • HONG KONG • INDIA, Bombay • INDONESIA, Djakarta • IRELAND, Dublin • ITALY, Milan, Rome and Turin • IRAN, Tehran • JAPAN, Osaka and Tokyo • MALAYSIA, Kuala Lumpur • MEXICO, Mexico City • NETHERLANDS, Utrecht • NEW ZEALAND, Auckland and Christchurch • NORWAY, Oslo • PUERTO RICO, Santurce • SINGAPORE • SPAIN, Madrid • SWEDEN, Gothenburg and Stockholm • SWITZERLAND, Geneva and Zurich • UNITED KINGDOM, Birmingham, Bristol, Epsom, Edinburgh, Leeds, Leicester, London, Manchester and Reading • VENEZUELA, Caracas •